



Water-use characteristics of *Syzygium antisepticum* and *Adinandra integerrima* in a secondary forest of Khao Yai National Park in Thailand with implications for environmental management

Ratchanon Ampornpitak^{1,2}, Anuttara Nathalang³ and Pantana Tor-ngern^{4,5}

¹International Program in Hazardous Substance and Environmental Management, Graduate School, Chulalongkorn University, Bangkok, Thailand

²Center of Excellence on Hazardous Substance Management, Chulalongkorn University, Bangkok, Thailand

³National Biobank of Thailand, National Science and Technology Development Agency, Pathum Thani, Thailand

⁴Department of Environmental Science, Faculty of Science, Chulalongkorn University, Bangkok, Thailand

⁵Water Science and Technology for Sustainable Environment Research Unit, Chulalongkorn University, Bangkok, Thailand

ABSTRACT

Background. Southeast Asia has experienced widespread deforestation and change in land use. Consequently, many reforestation projects have been initiated in this region. However, it is imperative to carefully choose the tree species for planting, especially in light of the increasing climate variability and the potential alteration of plantation on the watershed water balance. Thus, the information regarding water-use characteristics of various tree species and sizes is critical in the tree species selection for reforestation.

Methods. We estimated tree water use (T) of dominant species including *Syzygium antisepticum* and *Adinandra integerrima*, hereafter Sa and Ai , respectively, in a secondary tropical forest in Khao Yai National Park, Thailand, using sap flow data, and compared T between species and size classes. Additionally, we evaluated the responses of T of both species in each size class to environmental factors including soil moisture and vapor pressure deficit (VPD).

Results. Results showed consistently higher T in Sa compared to Ai across ranges of VPD and soil moisture. Under low soil moisture, T of Sa responded to VPD, following a saturating exponential pattern while Ai maintained T across different VPD levels, irrespective of tree size. No responses of T to VPD were observed in either species when soil water was moderate. When soil moisture was high, T of both species significantly increased and saturated at high VPD, albeit the responses were less sensitive in large trees. Our results imply that Ai may be suitable for reforestation in water-limited areas where droughts frequently occur to minimize reforestation impact on water availability to downstream ecosystems. In contrast, Sa should be planted in regions with abundant and reliable water resources. However, a mixed species plantation should be generally considered to increase forest resilience to increasing climate variation.

Submitted 17 July 2023

Accepted 5 November 2023

Published 30 November 2023

Corresponding author

Pantana Tor-ngern,
pantana.t@chula.ac.th

Academic editor

Chris Zou

Additional Information and
Declarations can be found on
page 17

DOI 10.7717/peerj.16525

© Copyright

2023 Ampornpitak et al.

Distributed under

Creative Commons CC-BY 4.0

OPEN ACCESS

Subjects Agricultural Science, Ecology, Plant Science, Ecohydrology, Forestry

Keywords Tree water use, Secondary forests, *Syzygium antisepticum*, *Adinandra integerrima*, Tropical forests, Sap flow

INTRODUCTION

Over an annual timescale with negligible change in total water storage, precipitation is coarsely partitioned into evapotranspiration and runoff in the forest water cycle (Wang & Tang, 2014). Because tree water use (T) constitutes 40–90% of evapotranspiration (Jasechko et al., 2013; Deb Burman et al., 2019), the quantity of T affects the amount of precipitation that ultimately contributes to runoff, impacting the downstream ecosystems. With the projected increases of global climate change impacts, T may be altered through changes in environmental conditions including temperature and precipitation regimes, severity of weather and climate extremes such as droughts and floods (Menezes-Silva et al., 2019). Such changes will certainly affect the responses of T to environmental factors, therefore governing the outflow from forests. Thus, evaluating such responses would provide insights into environmental management that involves water cycling, such as predicting runoff from forests which may result in floods or droughts in the downstream ecosystems.

The variations of T are mainly related to tree size (Meinzer et al., 2005; Jung et al., 2011) and environmental factors including soil water availability, solar radiation, and vapor pressure deficit (VPD) which represents atmospheric humidity (Xu & Yu, 2020; Gutierrez Lopez et al., 2021). Several previous studies reported significant variations of T with tree size. The relationship between tree diameter and T was found among several species of angiosperms (Meinzer et al., 2005), *Eucalyptus crebra* and *Callitris glaucophylla* in evergreen woodland in Australia (Zeppel & Eamus, 2008), and trees in a temperate mixed-deciduous forest in South Korea (Jung et al., 2011). Additionally, different tree sizes have been linked to different responses to droughts with large trees being more vulnerable than small trees to drought because of greater exposure to atmospheric demand (Bennett et al., 2015; Stovall, Shugart & Yang, 2019). However, information of the effects of tree size on T is still lacking in secondary tropical forests. The effects of environmental factors on T vary in different forest types and regions. For example, when soil moisture is not limited, T strongly responds to VPD, which increases when the air humidity decreases, and solar radiation in an old-growth spruce forest in the Ore Mountains, Germany (Clausnitzer et al., 2011). Under soil water stress, Brum et al. (2018) found that T could decrease with increasing VPD during an extreme drought in an Amazonian tropical rainforest. On the other hand, Spanner et al. (2022) found that the sensitivity of T to soil moisture varied with species, with some increasing and some decreasing during the dry period in an old-growth upland forest in the central Amazon. Thus, changing environmental conditions can alter the response patterns of T .

Forests in Southeast Asia provide a wide range of important ecosystem services to many people and communities. Unfortunately, these forests have been disrupted by widespread deforestation and land use change (Stibig et al., 2014; Zeng et al., 2018), resulting in various stages of forests in the same area (Curtis et al., 2018). In particular, the areas that were

previously used for agricultural purposes have been abandoned for several years, and naturally or artificially transformed into secondary forests. Consequently, many of the degraded forests may not contribute much to improving biodiversity and mitigating climate change through carbon dioxide removal from the atmosphere. Therefore, reforestation projects have emerged in many countries in the tropics, highlighting the use of native species to avoid competition with other native trees, which can help restore biodiversity and sequester carbon (Hooper, Condit & Legendre, 2002). However, planting more trees in existing secondary forests may raise some concerns because trees are potentially heavy water users and might deplete water resources (Jackson *et al.*, 2005). Also, reforestation may not be desirable in certain areas because it may reduce water availability for the existing trees and increase the evapotranspiration rate (Van Kanten & Vaast, 2006) and thus leading to reductions in runoff (Li, Xu & Sun, 2014). With these regards, an appropriate selection of tree species for planting is among the priority tasks for forest restoration since species-specific water-use characteristics play an important role in changing the components of the forest hydrologic cycle (Van Dijk & Keenan, 2007). However, the availability of such information is still limited in tropical forests, especially in secondary ones. Hence, it is imperative to evaluate the response patterns of T to environmental factors in secondary tropical forests that would offer necessary information on species-specific water-use characteristics.

Khao Yai National Park (KYNP) is a UNESCO world heritage site. Most of the areas of KYNP consist of a mosaic of different stages of vegetation succession with more than 60% of the forests undergoing different stages of regeneration while the remainder are old-growth forests. Thus, secondary forests in KYNP are important to biodiversity conservation and climate change mitigation through the regulation of atmospheric carbon. With these regards, this study was performed in a secondary tropical forest at KYNP, representing a young forest aged ~ 10 years. In this study site, the dominant tree species include *Syzygium antisepticum* and *Adinandra integerrima*. *Syzygium antisepticum* can be found as the dominant species in other tropical forests such as tropical evergreen swamp forests in Cambodia (Theilade *et al.*, 2011), dry evergreen forests in northeastern Thailand (Bunyavejchewin, 1999) and tropical coastal sand dune in southern Thailand (Marod *et al.*, 2020). *Adinandra integerrima* can be found in other parts of Thailand, such as Doi Inthanon National Park in the northern region (Georgiadis, 2022) and other countries in the tropics, such as Cambodia, China, Laos, and Vietnam (Tagane *et al.*, 2020). Despite the widespread presence of these species in Thailand and neighboring countries of Southeast Asia, the information on the water-use characteristics of both species is still lacking. Therefore, this study aims to (1) estimate T of *Syzygium antisepticum* and *Adinandra integerrima* in a secondary tropical forest in KYNP, and (2) evaluate the responses of T to environmental factors of both species in different tree size classes. The collected data covered a period from 18 September 2020 to 26 November 2022, including a wide range of environmental conditions. The outcome of this study would improve the understanding of species-specific water-use characteristics in secondary forests which can support policy design on the management of tropical forests and water resources. In addition, findings

from this study may provide a recommendation for selecting appropriate tree species for forest restoration in the tropical region.

MATERIALS & METHODS

Study site and measurements of the environmental variables

The study was conducted in Khao Yai National Park, Thailand (14°26'31"N, 101°22'55"E). Khao Yai National Park covers an area of about 200 km² in Nakhon Ratchasima, Saraburi, Prachinburi and Nakhon Nayok Provinces in Thailand. This region is dominated by monsoon climate, where the dry season usually lasts from November to April and from May to October for the wet season (Brockelman, Nathalang & Maxwell, 2017). Based on recorded data between 1994–2018, the overall mean annual temperature was 22.4 °C. The mean annual rainfall was 2,100 mm. Khao Yai National Park is characterized by different stages of forest succession comprising primary forests and various stages of secondary forests. In this study, we performed the study in a secondary forest representing a young forest in Nakhon Nayok Province. The study site has an area of 2 ha and an age of approximately 10 years (Chanthorn, Hartig & Brockelman, 2017). Its mean canopy height is 15 m and its tree density of 1,226 trees ha⁻¹. The soil is gray-brown ultisol which was degraded by shifting agriculture by burning before regeneration (Chanthorn et al., 2016; Chanthorn, Hartig & Brockelman, 2017). The bulk density was 1.24 g cm⁻³ and soil texture was sandy clay-loam with the sand contents of 64.4% and 56.4% as measured in September 2020 and February 2021, respectively (Rodtassana et al., 2021). In 2020, a 20 m tall tower was constructed for installing weather sensors above the forest canopy in the plot. Environmental conditions that influence *T* including atmospheric humidity, solar radiation, and soil moisture have been continuously monitored since then. Air temperature (*T*, °C), relative humidity (RH, %), and photosynthetically active radiation (PAR, μmol m⁻² s⁻¹) were measured by a temperature and relative humidity probe (EE181-PT; Campbell Scientific, Logan, UT, USA) and a quantum sensor (LI190R-PT, Campbell Scientific), respectively. Soil moisture sensors (Water content reflectometer, CS616-PT-U; Campbell Scientific) were installed to monitor volumetric soil moisture at 5, 10, 15, and 30 cm depth because tree roots may access water from multiple depths in the soil (Wang et al., 2019). We randomized the points to install soil moisture sensors around the tower. Two soil moisture sensors were installed at each depth of 5, 10, and 15 cm. However, soil moisture at 30 cm depth was monitored by one soil moisture sensor because soil moisture in subsoil was less sensitive to changing environmental conditions than topsoil (Rong et al., 2017). Rainfall (mm) was measured by tipping rain gauge bucket (TE525MM-PT; Campbell Scientific). All sensors were connected to a datalogger (CR1000 series; Campbell Scientific, Logan, UT, USA) which recorded data every 30 min. Air temperature and relative humidity are used to calculate vapor pressure deficit (VPD, kPa), which is the difference between actual vapor pressure and saturated vapor pressure (SVP), from the following equations (Monteith & Unsworth, 1990).

$$\text{SVP} = 610.7 \times 10^{\frac{7.5T}{237.5+T}} \quad (1)$$

$$\text{VPD} = \left(1 - \frac{\text{RH}}{100}\right) \times \text{SVP}. \quad (2)$$

Because we did not have any information regarding rooting depth, which determines the depth of soil moisture data to be used in the analysis, we used the average of soil moisture data from all soil water probes, covering soil depth up to 30 cm, as the soil moisture data (θ , m^3m^{-3}) for further analysis. Based on previous studies in the central Amazon which reported the most fine root distribution within 20 cm soil depth (Noguchi et al., 2014), we assumed that the average soil moisture across 30 cm depth represents the soil water that largely influences tree water use. To facilitate the cross-site comparison with other or future studies, relative extractable water (REW) was used in the analysis and was calculated according to Granier, Loustau & Bréda (2000)

$$\text{REW} = \frac{\theta - \theta_m}{\theta_{\text{FC}} - \theta_m} \quad (3)$$

where θ is the average soil moisture of all sensors across 30-cm soil depth, θ_m is minimum volumetric soil moisture and θ_{FC} is the soil water at field capacity. In the plot where soil water at field capacity has not been measured, maximum volumetric soil moisture during the study period can be used as θ_{FC} for the REW calculation (Tor-ngern et al., 2018). Accordingly, we used the maximum and minimum θ_{average} that were determined from our data during the study period to represent θ_{FC} and θ_m , respectively.

Species selection and tree sampling

The tree species were chosen based on the relative abundance of basal area in this plot, which was calculated from the basal area of one species relative to total basal area of all species within the site. To examine the difference in tree water use, two dominant tree species with similar leaf phenology were selected for this study. As a result, *Syzygium antisepticum* and *Adinandra integerrima*, hereafter *Sa* and *Ai*, respectively, which have evergreen leaf habit, were chosen to measure water flow rate. We attempted to select trees to cover the range of size distribution within the plot, based on the inventory data from the site (W Chanthorn, pers. comm., 2018), by partitioning the tree size classes into 10-cm intervals and sampled three trees from each size class. However, due to the requirement of trees being within 25 m radius from the data logger, 4 trees of *Sa* and 5 trees of *Ai* were selected for the measurement (Table 1).

Sap flux measurement and scaling up from the point measurement to whole-tree water use

Sap flux density (J_s), which represents water mass flowing through a unit area per time in trees, was measured using self-constructed thermal dissipation probes (TDPs) (Granier, 1985). Each TDP set contains one non-heated and one heated probe being supplied with a constant ~ 0.2 W electrical power. Before inserting TDPs into the stems, debarking around the drilling point was done before drilling the holes for TDP installation. Two holes were drilled with approximately 10–15 cm spacing between two probes. Based on previous studies in pine trees, the patterns of radial variation in J_s along the sapwood depth were observed with higher J_s in the outer sapwood layers than in the inner sapwood

Table 1 Information of the selected study trees. DBH refers to the diameter at breast height in cm. Sapwood area (in cm²) was estimated using an allometric equation derived from dominant species in the study site (Yaemphum, Unawong & Tor-Ngern, 2022).

Species	DBH (cm)	Sapwood area (cm ²)
<i>Adinandra integerrima</i>	13.7	135.92
<i>Adinandra integerrima</i>	6.5	30.64
<i>Adinandra integerrima</i>	11	87.67
<i>Adinandra integerrima</i>	5.3	20.38
<i>Adinandra integerrima</i>	11.3	92.51
<i>Syzygium antisepticum</i>	24.8	444.88
<i>Syzygium antisepticum</i>	22.4	363.02
<i>Syzygium antisepticum</i>	18.7	253.09
<i>Syzygium antisepticum</i>	17.8	229.34

layers (Ford et al., 2004; Oishi, Oren & Stoy, 2008). Therefore, ignoring the radial variation of J_s may produce an error when scaling up from J_s to T . However, previous studies in tropical forests that use similar sap flow sensors only measured J_s at the outer sapwood because of the unknown pattern of sapwood area in tropical tree species (Horna et al., 2011; Raquel Salas-Acosta et al., 2022). In addition, most tropical trees have diffuse-porous wood without distinct annual rings and tend to have a sap flow rate that is similar along the radial sapwood depth (Lu, Urban & Ping, 2004). Therefore, we assumed that J_s was uniform along the sapwood depth of the selected trees when scaling from single-point measurements to the whole-tree level, and only measured J_s at the outer 2-cm sapwood at breast height (~ 1.3 m above ground). In addition, azimuthal variation of J_s may produce variation when scaling up from J_s to T (Lu, Müller & Chacko, 2000; James et al., 2002; Tateishi et al., 2008). This variation depends on the effect of forest canopy shading by neighboring trees. In other words, trees may be obstructed from sunlight by canopy shading from surrounding trees leading to varying J_s along the circumference. In this study, the surrounding trees were equally distributed around the measured trees. Nevertheless, we installed two sensors in the north and the south directions in some trees which may be influenced by canopy shading at certain times during the day. Data from TDPs were recorded as 30-minute means of voltage difference between the probes (ΔV , mV) by the same data logger (CR1000; Campbell Scientific, Logan, UT, USA) that recorded environmental data. For the analysis, the voltage difference was converted to J_s ($\text{g m}^{-2} \text{s}^{-1}$) using an empirical equation (Granier, 1987):

$$J_s = 118.99 \times 10^{-6} \times \left(\frac{\Delta V_m - \Delta V}{\Delta V} \right)^{1.231} \quad (4)$$

where ΔV_m is the maximum voltage difference under no flow conditions which usually occurs at night and when VPD is low. The Baseline program version 4.0 was used to select ΔV_m to calculate J_s (Oishi, Hawthorne & Oren, 2016). The program automatically determines the maximum daily ΔV to represent ΔV_m . Maximum voltage difference may occur every night if air humidity is very high, or VPD reaches 0 kPa, resulting in potentially

zero water flow. However, this assumption is not valid for many ecosystems due to nighttime transpiration (e.g., [Caird, Richards & Donovan, 2007](#); [Forster, 2014](#); [Dayer et al., 2020](#)) or recharge of stem water ([Phillips & Oren, 1998](#)). For these reasons, no universal rule exists for identifying ΔV_m . The Baseline software takes an approach to ΔV_m estimation by first identifying points in time where flow is likely zero and allowing the user to visually inspect and modify those points.

To scale up from J_s to T , we employed the following approach. Daily sum J_s ($\text{g m}^{-2} \text{ day}^{-1}$) was considered in the analysis to avoid issues related to the nighttime recharge of stem water that may increase as soil moisture becomes more depleted ([Phillips & Oren, 1998](#)). When nighttime recharge increases with decreasing soil moisture, the proportions of sap flux at night relative to sap flux during the day become larger. This problem can be avoided when calculating T as a daily sum ([Phillips & Oren, 1998](#)). For trees with sensors in the north and the south direction, daily sum J_s from both sensors were averaged to a mean daily J_s (J_{mean}) for each of them ([Kunert et al., 2012](#)). The following equation was used to estimate T :

$$T = 1800 \times 10^{-7} \times J_{\text{mean}} \times A_s \quad (5)$$

where T is daily tree water use (L d^{-1}), J_{mean} is mean daily sum J_s ($\text{g m}^{-2} \text{ day}^{-1}$) and A_s is sapwood area (cm^2). In both species, A_s was estimated based on an allometric equation which was derived from 13 dominant species in an old growth and a secondary forest (the same plot as this study site) at Khao Yai National Park as follows ([Yaemphum, Unawong & Tor-Ngern, 2022](#)):

$$y = 0.728 \times x^{1.998} \quad (6)$$

where y is sapwood area (cm^2), x is diameter at breast height (cm).

Data analysis

For the analysis, we used the environmental data and T between 18 September 2020 to 26 November 2022. The data covered two years which represents a wide range of environmental conditions. To avoid the potential effects of wet canopy conditions that may inhibit T when the leaf surface is covered with water droplets ([Aparecido et al., 2016](#)), we selected the days under rain-free conditions to perform the analysis.

To evaluate the responses of T to environmental factors including VPD and REW, we performed a boundary line analysis ([Schäfer, Oren & Tenhunen, 2000](#)) to obtain the response of T to environmental factors under non-limiting conditions. Trees were categorized based on the size distribution of each species as presented in [Table 1](#) into large trees ($\text{DBH} \geq 10$ cm for *Ai* and $\text{DBH} \geq 20$ cm for *Sa*) and small trees ($\text{DBH} < 10$ cm for *Ai* and $\text{DBH} < 20$ cm for *Sa*). This results in 2 trees for both species in the small class, and three *Ai* trees and two *Sa* trees in the large class. After that, T from all trees in the same category was averaged to mean T (T_{mean}) for each day. Tree water use varies with VPD, REW and PAR ([Phillips & Oren, 2001](#)). Based on our data during the study period, VPD and PAR were highly correlated ($r = 0.79$, $p \leq 0.001$), therefore we focused on VPD and REW as environmental driving variables. We performed boundary line analysis after partitioning

data into three REW classes based on the REW distribution including low soil moisture ($REW < 0.1$), intermediate soil moisture ($REW 0.1-0.4$), and high soil moisture ($REW > 0.4$). With two classes of tree size (large and small), we had six subsets of data in both species. Each subset was subjected to the boundary line, designed to select data representing the maximum T_{mean} for each tree size in each REW class along the range of VPD. The upper boundary line was derived by (1) partitioning T_{mean} data of each REW class into at least five VPD intervals for appropriate number of data points in regression analysis (at least five data points per analysis), (2) calculating the mean and standard deviation of T_{mean} in each interval, (3) removing outliers using Dixon's test, (4) selecting the data falling above the mean plus one standard deviation and (5) averaging the selected data for each VPD interval. For each tree size and REW class, the mean T_{mean} values of all VPD intervals obtained in step (5) were analyzed by regression analysis. All regression analyses were performed in SigmaPlot version 12.0 (Systat Software, Inc., San Jose, CA USA). Data management and analysis were performed with Rstudio, version 1.3.1073 (*RStudio Team, 2020*).

RESULTS

Environmental conditions in the study site

During the study period, there were 52% rainy and 48% rain-free days. The average daily VPD and PAR inversely corresponded with rainfall, being low when rainfall occurred and vice versa. The maximum and minimum values of PAR during the study period were 575 and $57.3 \mu\text{mol m}^{-2} \text{s}^{-1}$, respectively, with an average of $345.76 \pm 103.47 \mu\text{mol m}^{-2} \text{s}^{-1}$. The average daily VPD was 0.34 ± 0.23 kPa. Volumetric soil moisture of all depths was averaged into $\theta_{average}$. The maximum and minimum $\theta_{average}$ during the study period were 0.2 and $0.04 \text{ m}^3 \text{ m}^{-3}$, respectively. The $\theta_{average}$ was then used to calculate REW with an average value of 0.44 ± 0.25 . [Figure 1](#) summarizes the environmental conditions during the study period.

Tree water use of *Syzygium antisepticum* and *Adinandra integerrima*

Tree water uses of both species during the study period are shown in [Fig. 2](#). The average T values with one standard deviation of *Sa* and *Ai* were 21.48 ± 7.73 and $10.01 \pm 4.04 \text{ L d}^{-1}$, respectively. Comparing T between both species, we found that the T of *Sa* was significantly higher than that of *Ai* under high soil moisture and high light conditions ($p < 0.0001$).

Responses of tree water use to environmental factors in different tree size classes

[Figure 3](#) summarizes the results of the responses of T to VPD under various REW ranges, with the regression statistics in [Table 2](#). At low soil moisture ($REW < 0.1$, black circles), T of *Sa* increased with increasing VPD and gradually saturated at high VPD while that of *Ai* did not respond to the changing VPD, regardless of tree size. Under intermediate soil moisture conditions ($REW 0.1-0.4$, gray squares), the T of both species in both sizes did not respond to VPD. Under high soil moisture ($REW > 0.4$, red triangles), the T of both

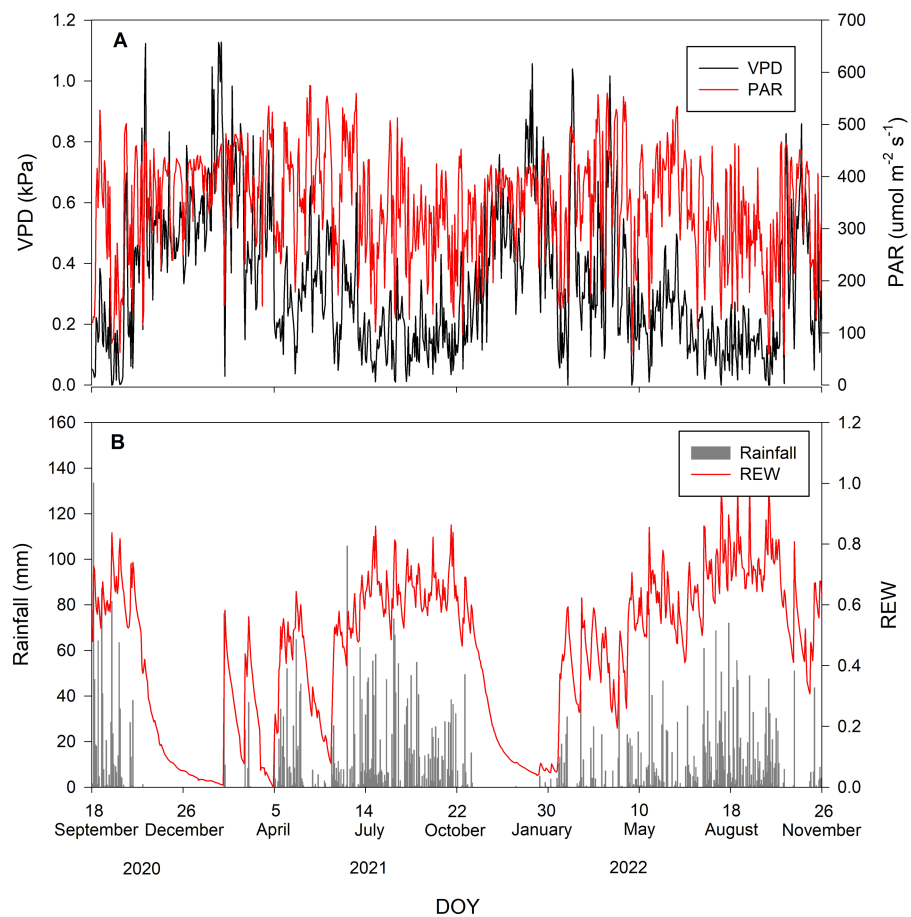


Figure 1 Environmental conditions during the study period. Daily values of (A) vapor pressure deficit (VPD in kPa; black line) and photosynthetically active radiation (PAR in $\mu\text{mol m}^{-2} \text{s}^{-1}$; red line) and (B) rainfall (mm; grey bar) and relative extractable water (REW; red line).

Full-size  DOI: [10.7717/peerj.16525/fig-1](https://doi.org/10.7717/peerj.16525/fig-1)

species in both sizes followed the saturating exponential pattern as previously described in the case of low soil moisture. However, the sensitivity of increasing T at low VPD was different between the species and size class. In both species, T of large trees was less sensitive to rising VPD than small ones (Table 2).

DISCUSSION

Overall, the environmental data during the study period represent a wide range of environmental conditions which facilitates the analysis of T responses to the environments. The maximum T of *Sa* in our data (47.54 L d^{-1}) was higher than the values that were found in T of *Syzygium cordatum* in a peat swamp forest in South Africa (Clulow et al., 2013), ranging from 30 L d^{-1} in the winter to 45 L d^{-1} in the summer. Moreover, our average T of *Sa* was within the range of T found in *Eugenia natalitia* (2 to 28 L d^{-1}), which is the same family as *Sa*, as reported by the same study. Although we did not find studies that reported T values of *Ai* or similar genus, T of *Ai* was within the range of T (10 to $1,180 \text{ L d}^{-1}$)

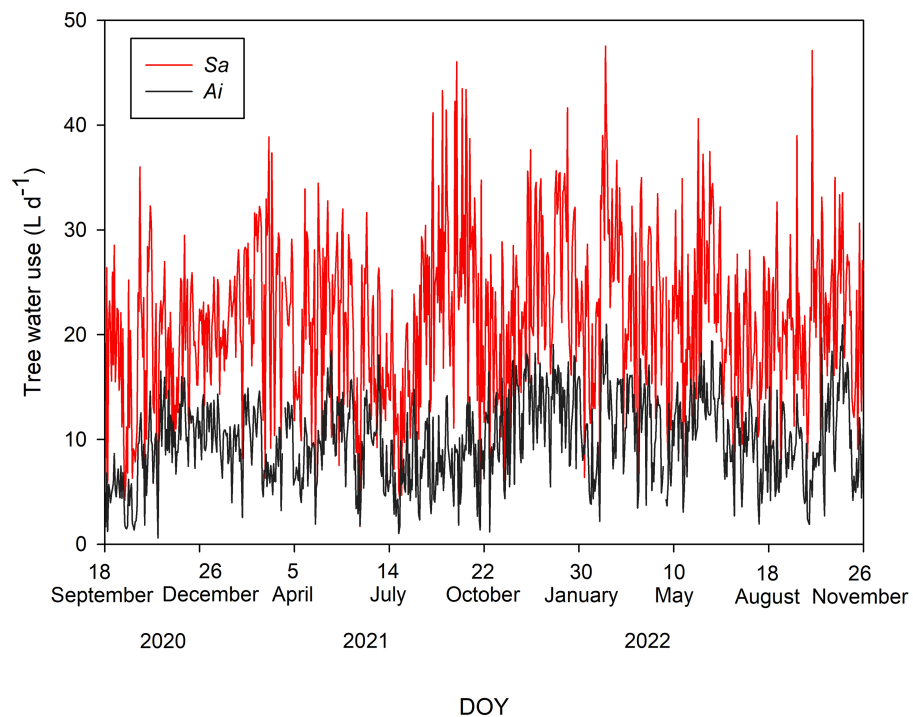


Figure 2 Daily tree water use. Daily sum of tree water use ($L d^{-1}$) of *Syzygium antisepticum* (red line) and *Adinandra integerrima* (black line), averaged across all trees for each species, throughout the study period from 18 September 2020 to 26 November 2022.

Full-size DOI: [10.7717/peerj.16525/fig-2](https://doi.org/10.7717/peerj.16525/fig-2)

Table 2 Summary of regression statistics.

Species	Size classes	REW classes	Relationships	r^2	p
<i>Syzygium antisepticum</i> (Sa)	Small (DBH < 20 cm)	<0.1	$T = 22.04 \times (1 - e^{-5.03 \times VPD})$	0.77	0.049
		0.1–0.4	n/a	0.14	0.538
		>0.4	$T = 27.82 \times (1 - e^{-8.55 \times VPD})$	0.80	0.042
	Large (DBH \geq 20 cm)	<0.1	$T = 56.63 \times (1 - e^{-4.30 \times VPD})$	0.76	0.023
		0.1–0.4	n/a	0.44	0.56
		>0.4	$T = 51.34 \times (1 - e^{-6.75 \times VPD})$	0.85	0.027
<i>Adinandra integerrima</i> (Ai)	Small (DBH < 10 cm)	<0.1	n/a	0.13	0.868
		0.1–0.4	n/a	0.21	0.440
		>0.4	$T = 6.65 \times (1 - e^{-7.53 \times VPD})$	0.96	0.003
	Large (DBH \geq 10 cm)	<0.1	n/a	0.45	0.143
		0.1–0.4	n/a	0.11	0.589
		>0.4	$T = 29.25 \times (1 - e^{-5.08 \times VPD})$	0.99	<0.0001

Notes.

T is tree water use (Ld^{-1}), VPD is vapor pressure deficit (kPa) and r^2 is the coefficient of determination and p value for each regression result. The analyses were based on significance level of 0.05. n/a indicates no significant relationship was found.

found in 93 tree species from 52 reviewed publications that estimated whole-plant water use for trees growing in worldwide natural forests or plantations (Wullschleger, Meinzer & Vertessy, 1998). The study reported that the rates of water use ranged from 10 $L d^{-1}$ for

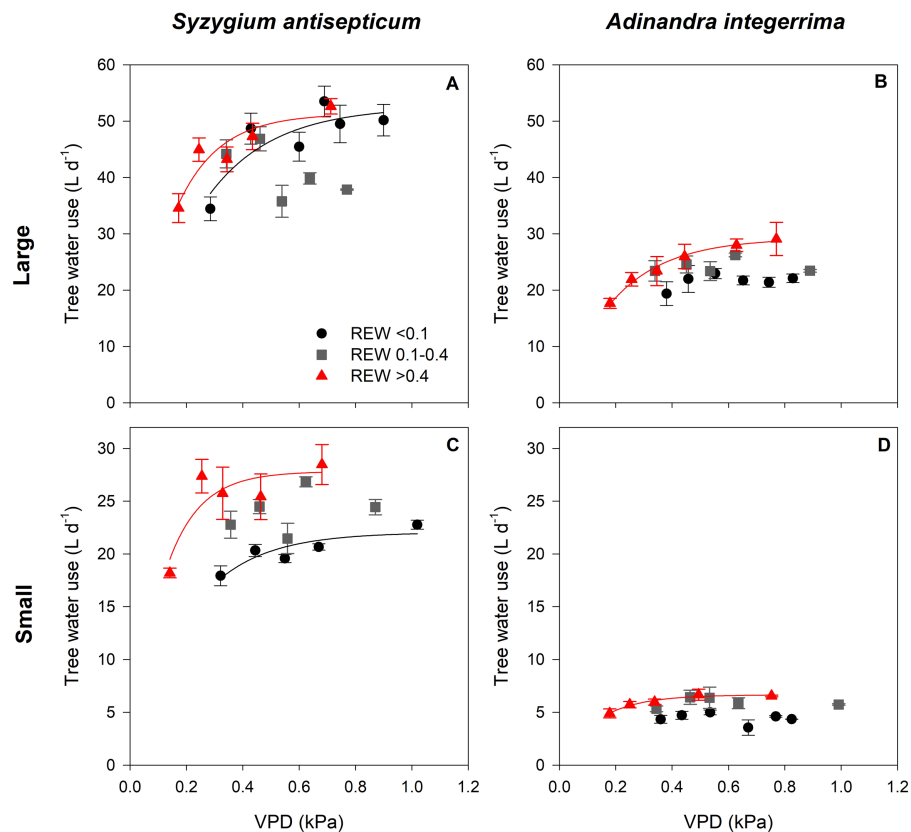


Figure 3 Relationship between tree water use and vapor pressure deficit under different soil moisture conditions. Relationship between tree water use (T ; $L d^{-1}$) and vapor pressure deficit (VPD; kPa) of *Syzygium antisepticum* in (A) large and (C) small size classes and *Adinandra integerrima* in (B) large and (D) small size classes under low soil moisture condition ($REW < 0.1$, circles), under intermediate soil moisture condition ($REW 0.1-0.4$, squares), and under high soil moisture condition ($REW > 0.4$, triangles).

Full-size [DOI: 10.7717/peerj.16525/fig-3](https://doi.org/10.7717/peerj.16525/fig-3)

trees in a 32-year-old plantation of *Quercus petraea* L. ex Liebl. in eastern France to $1,180 L d^{-1}$ for an overstory tree, *Euperua purpurea* Bth., growing in the Amazonian rainforest. Overall, the T values of both species in this study were within the wide ranges found in previous studies in tropical settings (Table 3).

Previous studies showed that the variation of J_s among trees of different ages and sizes is relatively low (Kumagai et al., 2007; Jaskierniak et al., 2016); thus, sapwood area may be a major determinant of T in this study. Based on our data, J_s of trees was similar between both species ($p = 0.278$), suggesting the greater contribution of sapwood area or tree size to the significant difference in T . Additionally, higher water use in large trees may imply their deeper access to groundwater whereas small trees may only consume water from shallow soil as previously shown in a study investigating water use by *Acer saccharum* Marsh. in different sizes (Dawson, 1996). Moreover, other research in tropical forests reported that large trees consume much more water relative to small trees as indicated by the positive relationship between water consumption and tree size (O'Grady, Eamus & Hutley, 1999; Meinzer, Goldstein & Andrade, 2001; Horna et al., 2011; Aparecido et al., 2016).

Table 3 Summary of water use of tropical forest trees reviewed in this study.

Reference	Location	Species	Method	DBH (cm)	Tree height (m)	T (Ld-1)	Period			
Dye (1996)	Frankfort State Forest in South Africa (24°49'S, 30°43'E)	Site 1 (3-year-old trees)	HPM	14.7 ± 1.17	14.7 ± 1.01	45.8	July 1993			
		Site 2 (9-year-old trees)	HPM	29.7 ± 4.53	34.3 ± 1.15	68.0				
Eamus, O'Grady & Hutley (2000)	North Australian Tropical Transect -Dry site (130°45'E, 12°30'S) -Intermediate site (132°39'E, 14°40'S) -Wet site (133°46'E, 17°07'S)	<i>Eucalyptus mini-ate Eucalyptus tetrodonta</i>	HPM	8.8–30.4	NA	16.1	August–September 1998 (Dry season)			
		<i>Eucalyptus latifolia</i>		9.7–48.7						
		<i>Eucalyptus Capricornia</i>		6.1–35.6						
		<i>Eucalyptus spp. Eucalyptus terminalis</i>		6.1–35.6						
						17.9	March–April 1999 (Wet season)			
Dierick & Hölscher (2009)	The Philippines (10°45'55"N, 124°47'25"E) and (10°44'10"N, 124°48'16"E)	<i>Shorea contorta</i>	TDP	18.2 ± 7	16.1 ± 3.5	18.4 ± 19.5	June to August 2006 and July to September 2007			
		<i>Parashorea malaanonan</i>		12 ± 0.4	13.1 ± 1.6	10.6 ± 1.2				
		<i>Hopea malibato</i>		11.6 ± 2.4	13.3 ± 1.8	9.1 ± 8.5				
		<i>Hopea plagata</i>		6.6 ± 1.0	9.4 ± 1.2	4.0 ± 1.9				
		<i>Swietenia macrophylla</i>		14.6 ± 1.3	14.2 ± 1.5	25.5 ± 4.1				
		<i>Vitex parviflora</i>		20.4 ± 5.5	12.7 ± 1.6	30.7 ± 14.6				
		<i>Myrica javanica</i>		22.1 ± 3.7	11.2 ± 0.6	61.7 ± 17.0				
		<i>Sandoricum koetjape</i>		16.3 ± 2.7	13.2 ± 1.1	32.8 ± 16.5				
		<i>Durio zibethinus</i>		19.8 ± 7.3	13.8 ± 3.0	44.6 ± 18.5				
		<i>Gmelina arborea</i>		21.9 ± 4.0	18.1 ± 2.4	27.6 ± 7.8				
		Dierick et al. (2010)	The Philippines (10°45'55"N, 124°47'25"E) and (10°44'10"N, 124°48'16"E)	<i>Shorea contorta</i>	TDP	18.2 ± 7		16.1 ± 3.5	18.4 ± 14.4	June to August 2006 and July to September 2007
				<i>Parashorea malaanonan</i>		12 ± 0.4		13.1 ± 1.6	10.6 ± 1.1	
				<i>Hopea malibato</i>		11.6 ± 2.4		13.3 ± 1.8	9.1 ± 6.7	
<i>Hopea plagata</i>				6.6 ± 1.0	9.4 ± 1.2	4.0 ± 1.3				
<i>Swietenia macrophylla</i>				14.6 ± 1.3	14.2 ± 1.5	25.5 ± 3.6				
<i>Vitex parviflora</i>				20.4 ± 5.5	12.7 ± 1.6	20.7 ± 9.3				
<i>Myrica javanica</i>				22.1 ± 3.7	11.2 ± 0.6	43.2 ± 12.5				
<i>Sandoricum koetjape</i>				16.3 ± 2.7	13.2 ± 1.1	23.4 ± 12.6				
<i>Durio zibethinus</i>				19.8 ± 7.3	13.8 ± 3.0	32.9 ± 14.8				
<i>Gmelina arborea</i>				21.9 ± 4.0	18.1 ± 2.4	19.8 ± 6.1				
Indonesia (1.552°S, 120.020°E)				<i>Theobroma cacao</i>	TDP	10.1 ± 1.6	4.5 ± 0.8	10.0 ± 4.5	February 2007 (Dry season)	
				<i>Gliricidia sepium</i>		15.0 ± 2.5	10.9 ± 2.1	13.9 ± 4.1		
Panama (9.317°N, 79.633°W)				<i>Luehea seemannii</i>	TDP	11.8 ± 1.6	8.7 ± 1.0	13.1 ± 3.6	June to September 2007 (Wet season)	
		<i>Anacardium excelsum</i>		10.1 ± 0.6	6.4 ± 0.4	10.5 ± 2.8				
		<i>Hura crepitans</i>		18.0 ± 2.3	5.4 ± 1.0	14.6 ± 7.6				
		<i>Cedrela odorata</i>		12.0 ± 0.6	11.7 ± 1.1	9.9 ± 2.2				
		<i>Tabebuia rosea</i>		11.5 ± 1.3	7.4 ± 0.3	7.9 ± 0.6				

(continued on next page)

Table 3 (continued)

Reference	Location	Species	Method	DBH (cm)	Tree height (m)	T (Ld-1)	Period
<i>Clulow et al. (2013)</i>	Nkazana Peat swamp forest site (28°10.176'S, 32°30.070'E)	<i>Syzygium cordatum</i> <i>Shirakiopsis elliptica</i>	HPM	NA	22.5 6.8	30-45 2-12	4 September 2009 to 4 May 2011
	Dune forest site (28°12.017'S, 32°31.633'E)	<i>Drypetes natalensis</i> <i>Eugenia natalitia</i> <i>Mimusops caffra</i>	HPM	NA	4.5 7.5 7.2	5-45 2-28 1-4	
<i>Chen et al. (2014)</i>	Northwest China (38° 11' N, 109° 28' E)	<i>Ziziphus jujuba</i>	TDP	6.69-11.46	1.39-1.63	12.52-19.47	May to October 2012 (growth season)
<i>Cavaleri et al. (2014)</i>	Lowland wet forest on Hawaii Island (19°42.15'N, 155°2.40'W)	Invaded forest plots		0-42.0 7.0-27.0 6.0-17.0 9.7,0-19.0	NA	2-25	February to November 2008
		Removal plots		9.0-42.0	NA	5-43	
<i>Hardanto et al. (2017)</i>	Rubber monoculture	Rubber trees <i>Hevea brasiliensis</i>	TDP	20.3 ± 0.6	13.4 ± 0.4	25.6 ± 3.7	June to August 2013
	Jungle rubber	Rubber trees <i>Hevea brasiliensis</i>	TDP	17.8 ± 0.5	140. ± 0.5	24.1 ± 4.2	
		Admixed native trees <i>Cratogeomys sumatranum</i> <i>Callerya atropurpurea</i> <i>Ixonanthes petiolaris</i> <i>Santiria griffithii</i> <i>Macaranga cf. sumatrana</i> <i>Artocarpus nitidus</i> <i>Alstonia angustifolia</i> <i>Streblus elongates</i> <i>Artocarpus integer</i> <i>Porterandia anisophylla</i> <i>Timonius wallichianus</i>	TDP	18.03 ± 0.3	14.0 ± 0.2	26.7 ± 2.2	

(continued on next page)

Table 3 (continued)

Reference	Location	Species	Method	DBH (cm)	Tree height (m)	T (Ld-1)	Period
<i>Brum et al. (2018)</i>	Mature lowland Amazon forest (2°31'0S, 48°53'W)	Canopy trees	HPM	30-109	NA	68 ± 87	October 2015 to April 2016
		Subcanopy trees	HPM	10-30	NA	11 ± 10.04	

Notes.

Mean values (\pm SD if available) are presented. The abbreviations are DBH, diameter at breast height (-1.3 m above ground); T , tree water use (Ld-1); TDP, thermal dissipation probes; HPM, heat pulse method. NA indicates not available data.

The response pattern of saturating exponential function of T with VPD found in this study is similar to the one observed in various tree species in a wide range of tropical forests, including a lowland tropical forest of Central and northern South America (Meinzer *et al.*, 1993), a primary lowland tropical forest in eastern Amazon (Brum *et al.*, 2018) and a per-humid tropical forest of Central Sulawesi in Indonesia (Horna *et al.*, 2011). A previous study showed that tree transpiration strongly increases with rising VPD under high soil water availability; however, such response may become weaker or disappear when soil moisture is lower, depending on tree species (Butz *et al.*, 2018). In general, we observed similar responses of T to VPD under wet and dry conditions with stronger responses in the former; whereas no responses were detected when trees experienced moderate soil moisture. Under dry conditions, our results indicate that Sa was sensitive to increasing VPD while Ai can maintain their water use rate regardless of changes in VPD, regardless of tree size. This implies that Ai may be more tolerant to drought than Sa and may have strong control over their water use under low soil moisture, regardless of tree size, which can prevent it from negative effects from droughts. This result agreed with a previous study that investigated the drought tolerance of both species in this site (Unawong *et al.*, 2022). Based on tree hydraulic measurement, the study reported that xylem pressure at 50% loss of hydraulic conductivity (P_{50}) of Ai and Sa were -5.97 and -4.71 MPa, respectively. It is implied that species with lower P_{50} have greater resistance to embolisms, thus allowing better adaptation to environments where water stress frequently occurs (Maherali, Pockman & Jackson, 2004). When comparing T in different size classes of Sa , large trees were less sensitive to rising VPD at lower VPD ranges. The less sensitivity of large trees to rising VPD leads to a slower decrease in water consumption rate to save water than small trees, resulting in potentially greater vulnerability to hydraulic failure during drought in large trees. Previous studies have shown size-dependent sensitivity to droughts in many ecosystems. A synthetic study using data on tree growth and mortality, which were collected during 40 drought events in forests worldwide, showed that droughts consistently exerted negative impacts on the growth and mortality rates of larger trees (Bennett *et al.*, 2015). Greater vulnerability of large trees to drought could be affected by the higher exposure to radiation and atmospheric demand because of increasing tree height (Roberts, Cabral & Aguiar, 1990; Nepstad *et al.*, 2007). Moreover, large trees have to transport water to greater heights, which is against the effects of gravity, thus facing greater hydraulic failure (Ryan, Phillips & Bond, 2006; Zhang *et al.*, 2009). Thus, large Sa may be at higher risk of hydraulic failure when drought is more pronounced, plausibly leading to increasing mortality rates (Choat *et al.*, 2018). At moderate soil water, the results indicated that both species could maintain their tree water use, regardless of tree size. Under high soil moisture conditions, the T of both species in both sizes also followed the saturating exponential pattern as in the case of low soil moisture conditions. However, the sensitivity of increasing T at low VPD was different between sizes. In both species, T of large sizes was less sensitive to rising VPD than small ones. In other words, when the air becomes dry, small trees may decrease water consumption rate faster to save water than large trees. This may be partly because small trees mainly use shallow soil water whereas large trees can access water from deeper soil (Brum *et al.*, 2018), allowing less sensitivity to droughts in large trees. Nevertheless,

further studies that investigate water-source partitioning of different tree species in the same forest (e.g., [Hasselquist, Allen & Santiago, 2010](#); [Wang et al., 2020](#)), tracing isotopic signals of water from various soil layers to the stems, may be performed to confirm these results.

Implications for environmental management

The results from this study imply that *Sa* may provide ecosystem disservice in dry areas due to its high water consumption which results in low water supply for the downstream community, but it may slow down runoff in the region that experiences heavy precipitation. In contrast, *Ai* may provide ecosystem benefits by conservatively using water, even under drought conditions, but may increase runoff when storms come with high rainfall. Another implication is that *Ai* may be suitable for reforestation in the area where droughts frequently occur in downstream ecosystems through its conservative water-use behavior, thus maintaining runoff from the forests during drought. Moreover, because *Ai* showed relatively constant water use regardless of tree size, the species would still provide such benefits to the ecosystems even when it grows larger in the future. In contrast, *Sa* may be appropriate for reforestation in the area with frequent floods because it has high water consumption during high water availability which may decelerate runoff from forests into downstream ecosystems. This would benefit the downstream ecosystems when storms occur. Regardless, mixed planting species seem to be suitable for reforestation in the areas where extreme events do not frequently occur because both species can maintain their water use at moderate soil moisture regardless of tree size, therefore preventing the depletion of soil water availability. In addition, mixed planting species could reduce the competition for limited water resources because the differences in root structures of different tree species lead to less competition for water ([Schwendenmann et al., 2015](#)). Nevertheless, reforestation projects should emphasize the use of native species to avoid competition with other native trees on the site ([Hooper, Condit & Legendre, 2002](#)).

CONCLUSIONS

We estimated tree water use (T) of dominant tree species including *Syzygium antisepticum* (*Sa*) and *Adinandra integerrima* (*Ai*) in a secondary tropical forest in Khao Yai National Park from sap flux density (J_s) which was continuously monitored with custom-made thermal dissipation probes and compared T of both species in different tree size classes. In addition, we evaluated the responses of T to environmental factors of both species in different tree size classes. The results showed that T of *Sa* was significantly higher than *Ai* and that large trees had higher T than small ones which was related to relatively lower sapwood area in the small trees. Further analysis of the response patterns of T showed that *Sa* was more sensitive to increasing VPD than *Ai* while *Ai* can maintain their water use regardless of tree size under low soil moisture. This implies that *Ai* may be able to cope with the negative effects of droughts and retain such capacity when they grow. With ample soil moisture, both species can maintain their tree water use regardless of tree size. When soil moisture becomes high, the T of both species in both sizes increases with rising VPD and then saturated at high VPD. Nevertheless, T of both species in large size

was less sensitive to rising VPD than in small size which may be explained by the deeper access to groundwater in large trees. For the implications for management, our results suggest that *Ai* may be suitable for reforestation in the area where droughts frequently occur in the downstream ecosystem through its conservative water-use behavior and may benefit downstream ecosystems with continuous runoff from the forest despite droughts. Moreover, *Ai* has conservative water-use behavior regardless of tree size. Thus, *Ai* would still provide these benefits to ecosystems when they grow larger in the future. In contrast, *Sa* seems suitable for reforestation in the area with frequent floods because it has high water consumption during high water availability which may slow down runoff from forest into downstream ecosystems when storms come. However, mixed planting species may be suitable for reforestation in areas where extreme events do not frequently occur because both species can maintain their water use at moderate soil moisture regardless of tree size which prevents the depletion of soil water availability. In this case, depending on the purposes of reforestation, *Sa* and *Ai* may provide either benefits or negative effects to the ecosystems. In conclusion, this study highlights the dependency of responses of *T* to environmental conditions on tree species and size. Such information would benefit the selection of tree species for reforestation that could adapt well to certain environments and support policy design on the management of tropical forests and water resources. Nevertheless, a further study involving additional field measurements of the physiological parameters of trees, such as root depth, is needed to support the proposed findings.

ACKNOWLEDGEMENTS

We would like to thank Miss Nichaphan Kasikam, Mr. Rathasart Somnuk, Miss Jutawan Moonongsang, and Miss Jeerapat Thawjaturat for field assistance.

ADDITIONAL INFORMATION AND DECLARATIONS

Funding

This research was funded by the Thailand Science Research and Innovation Fund Chulalongkorn University (DIS66230005). Ratchanon Ampornpitak was supported by Thailand Graduate Institute of Science and Technology (TGIST), National Science and Technology Development Agency through a postgraduate scholarship (SCA-CO-2564-14439-TH) and the International Postgraduate Program in Hazardous Substance and Environmental Management, Graduate School, Chulalongkorn University. The funders had no role in study design, data collection and analysis, decision to publish, or preparation of the manuscript.

Grant Disclosures

The following grant information was disclosed by the authors:

Thailand Science Research and Innovation Fund Chulalongkorn University: DIS66230005. Ratchanon Ampornpitak was supported by Thailand Graduate Institute of Science and Technology (TGIST), National Science and Technology Development Agency through a postgraduate scholarship: SCA-CO-2564-14439-TH.

International Postgraduate Program in Hazardous Substance and Environmental Management, Graduate School, Chulalongkorn University.

Competing Interests

The authors declare there are no competing interests.

Author Contributions

- Ratchanon Ampornpitak performed the experiments, analyzed the data, prepared figures and/or tables, authored or reviewed drafts of the article, and approved the final draft.
- Anuttara Nathalang analyzed the data, authored or reviewed drafts of the article, provide facility at the field site, and approved the final draft.
- Pantana Tor-ngern conceived and designed the experiments, performed the experiments, analyzed the data, authored or reviewed drafts of the article, and approved the final draft.

Data Availability

The following information was supplied regarding data availability:

The raw data are available in the [Supplementary File](#).

Supplemental Information

Supplemental information for this article can be found online at <http://dx.doi.org/10.7717/peerj.16525#supplemental-information>.

REFERENCES

- Aparecido LMT, Miller GR, Cahill AT, Moore GW. 2016.** Comparison of tree transpiration under wet and dry canopy conditions in a Costa Rican premontane tropical forest. *Hydrological Processes* **30(26)**:5000–5011 DOI [10.1002/hyp.10960](https://doi.org/10.1002/hyp.10960).
- Bennett AC, Mcdowell NG, Allen CD, Anderson-Teixeira KJ. 2015.** Larger trees suffer most during drought in forests worldwide. *Nature Plants* **1**:15139 DOI [10.1038/nplants.2015.139](https://doi.org/10.1038/nplants.2015.139).
- Brockelman WY, Nathalang A, Maxwell JF. 2017.** *Mo singto plot: flora and ecology*. Bangkok: National Science and Technology Development Agency and Department of National Parks, Wildlife and Plant Conservation.
- Brum M, López JG, Asbjornsen H, Licata J, Pypker T, Sanchez G, Oiveira RS. 2018.** ENSO effects on the transpiration of eastern Amazon trees. *Philosophical Transactions of the Royal Society B* **373**:20180085 DOI [10.1098/rstb.2018.0085](https://doi.org/10.1098/rstb.2018.0085).
- Bunyavejchewin S. 1999.** Structure and dynamics in seasonal dry evergreen forest in northeastern Thailand. *Journal of Vegetation Science* **10(6)**:787–792 DOI [10.2307/3237303](https://doi.org/10.2307/3237303).
- Butz P, Hölscher D, Cueva E, Graefe S. 2018.** Tree water use patterns as influenced by phenology in a dry forest of Southern Ecuador. *Frontiers in Plant Science* **9**:945 DOI [10.3389/fpls.2018.00945](https://doi.org/10.3389/fpls.2018.00945).
- Caird MA, Richards JH, Donovan LA. 2007.** Nighttime stomatal conductance and transpiration in C3 and C4 plants. *Plant Physiology* **143**:4–10 DOI [10.1104/pp.106.092940](https://doi.org/10.1104/pp.106.092940).

- Cavaleri MA, Ostertag R, Cordell S, Sack L. 2014.** Native trees show conservative water use relative to invasive trees: results from a removal experiment in a Hawaiian wet forest. *Conservation Physiology* 2(1):cou016 DOI [10.1093/conphys/cou016](https://doi.org/10.1093/conphys/cou016).
- Chanthorn W, Hartig F, Brockelman WY. 2017.** Structure and community composition in a tropical forest suggests a change of ecological processes during stand development. *Forest Ecology and Management* 404:100–107 DOI [10.1016/j.foreco.2017.08.001](https://doi.org/10.1016/j.foreco.2017.08.001).
- Chanthorn W, Ratanapongsai Y, Brockelman WY, Allen MA, Favier C, Dubois MA. 2016.** Viewing tropical forest succession as a three-dimensional dynamical system. *Theoretical Ecology* 9:163–172 DOI [10.1007/s12080-015-0278-4](https://doi.org/10.1007/s12080-015-0278-4).
- Chen D, Wang Y, Liu S, Wei X, Wang X. 2014.** Response of relative sap flow to meteorological factors under different soil moisture conditions in rainfed jujube (*Ziziphus jujuba* Mill.) plantations in semiarid Northwest China. *Agricultural Water Management* 136:23–33 DOI [10.1016/j.agwat.2014.01.001](https://doi.org/10.1016/j.agwat.2014.01.001).
- Choat B, Brodribb TJ, Brodersen CR, Duursma RA, López R, Medlyn BE. 2018.** Triggers of tree mortality under drought. *Nature* 558:531–339 DOI [10.1038/s41586-018-0240-x](https://doi.org/10.1038/s41586-018-0240-x).
- Clausnitzer F, Köstner B, Schwärzel K, Bernhofer C. 2011.** Relationships between canopy transpiration, atmospheric conditions and soil water availability—Analyses of long-term sap-flow measurements in an old Norway spruce forest at the Ore Mountains/Germany. *Agricultural and Forest Meteorology* 151(8):1023–1034 DOI [10.1016/j.agrformet.2011.04.007](https://doi.org/10.1016/j.agrformet.2011.04.007).
- Clulow AD, Everson CS, Price JS, Jewitt GPW, Scott-Shaw BC. 2013.** Water-use dynamics of a peat swamp forest and a dune forest in Maputaland, South Africa. *Hydrology and Earth System Sciences* 17(5):2053–2067 DOI [10.5194/hess-17-2053-2013](https://doi.org/10.5194/hess-17-2053-2013).
- Curtis PG, Slay CM, Harris N, Tyukavina A, Hansen MC. 2018.** Classifying drivers of global forest loss. *Science* 361(6407):1108–1111 DOI [10.1126/science.aau3445](https://doi.org/10.1126/science.aau3445).
- Dawson TE. 1996.** Determining water use by trees and forests from isotopic, energy balance and transpiration analyses: the roles of tree size and hydraulic lift. *Tree Physiology* 16(1–2):263–272 DOI [10.1093/treephys/16.1-2.263](https://doi.org/10.1093/treephys/16.1-2.263).
- Dayer S, Herrera JC, Dai Z, Burlett R, Lamarque LJ, Delzon S, Bortolami G, Cochard H, Gambetta GA. 2020.** Nighttime transpiration represents a negligible part of water loss and does not increase the risk of water stress in grapevine. *Plant, Cell & Environment* 44(2):387–398 DOI [10.1111/pce.13923](https://doi.org/10.1111/pce.13923).
- Deb Burman PK, Sarma D, Morrison R, Karipot A, Chakraborty S. 2019.** Seasonal variation of evapotranspiration and its effect on the surface energy budget closure at a tropical forest over north-east India. *Journal of Earth System Science* 128:127 DOI [10.1007/s12040-019-1158-x](https://doi.org/10.1007/s12040-019-1158-x).
- Dierick D, Hölscher D. 2009.** Species-specific tree water use characteristics in reforestation stands in the Philippines. *Agricultural and Forest Meteorology* 149:1317–1326 DOI [10.1016/j.agrformet.2009.03.003](https://doi.org/10.1016/j.agrformet.2009.03.003).
- Dierick D, Kunert N, Köhler M, Schwendenmann L, Hölscher D. 2010.** Comparison of tree water use characteristics in reforestation and agroforestry stands across the

- tropics. In: Tschardt T, Leuschner C, Veldkamp E, Faust H, Guhardja E, Bidin A, eds. *Tropical rainforests and agroforests under global change. Environmental Science and Engineering*. Berlin, Heidelberg: Springer DOI 10.1007/978-3-642-00493-3_13.
- Dye PJ. 1996.** Response of *Eucalyptus grandis* trees to soil water deficits. *Tree Physiology* 16:233–238 DOI 10.1093/treephys/16.1-2.233.
- Eamus D, O’Grady APO, Hutley L. 2000.** Dry season conditions determine wet season water use in the wet-tropical savannas of northern Australia. *Tree Physiology* 20(18):1219–1226 DOI 10.1093/treephys/20.18.1219.
- Ford CR, McGuire MA, Mitchell RJ, Teskey RO. 2004.** Assessing variation in the radial profile of sap flux density in *Pinus* species and its effect on daily water use. *Tree Physiology* 24(3):241–249 DOI 10.1093/treephys/24.3.241.
- Forster MA. 2014.** How significant is nocturnal sap flow? *Tree Physiology* 34:757–765 DOI 10.1093/treephys/tpu051.
- Georgiadis P. 2022.** Ethnobotanical knowledge against the combined biodiversity, poverty and climate crisis: A case study from a Karen community in Northern Thailand. *Plants People Planet* 4(4):382–391 DOI 10.1002/ppp3.10259.
- Granier A. 1985.** Une nouvelle méthode pour la mesure du flux de sève brute dans le tronc des arbres. *Annals of Forest Science* 42(4):193–200 DOI 10.1051/forest:19850204.
- Granier A. 1987.** Evaluation of transpiration in a Douglas-fir stand by means of sap flow measurements. *Tree Physiology* 3:309–320 DOI 10.1093/treephys/3.4.309.
- Granier A, Loustau D, Bréda N. 2000.** A generic model of forest canopy conductance dependent on climate. *soil water availability and leaf area index. Annals of Forest Science* 8:755–765 DOI 10.1051/forest:2000158.
- Gutierrez Lopez J, Tor-ngern P, Oren R, Kozii N, Laudon H, Hasselquist NJ. 2021.** How tree species, tree size, and topographical location influenced tree transpiration in northern boreal forests during the historic 2018 drought. *Global Change Biology* 27(13):3066–3078 DOI 10.1111/gcb.15601.
- Hardanto A, Röhl A, Niu F, Mejjide A, Hendrayato, Hölscher D. 2017.** Oil palm and rubber tree water use patterns: effects of topography and flooding. *Frontiers in Plant Science* 8:452 DOI 10.3389/fpls.2017.00452.
- Hasselquist N, Allen MF, Santiago LS. 2010.** Water relations of evergreen and drought-deciduous trees along a seasonally dry tropical forest chronosequence. *Oecologia* 164:881–890 DOI 10.1007/s00442-010-1725-y.
- Hooper E, Condit R, Legendre P. 2002.** Responses of 20 native tree species to reforestation strategies for abandoned farmland in Panama. *Ecological Applications* 12(6):1626–1641 DOI 10.2307/3099927.
- Horna V, Schuldt B, Brix S, Leuschner C. 2011.** Environment and tree size controlling stem sap flux in a perhumid tropical forest of Central Sulawesi, Indonesia. *Annals of Forest Science* 68(5):1027–1038 DOI 10.1007/s13595-011-0110-2.
- Jackson RB, Jobbágy EG, Avissar R, Roy SB, Barrett DJ, Cook CW, Farley KA, Maitre DC, McCarl BA, Murray BC. 2005.** Trading water for carbon with biological carbon sequestration. *Science* 310(5756):1944–1947 DOI 10.1126/science.1119282.

- James SA, Clearwater MJ, Meinzer FC, Goldstein G. 2002.** Heat dissipation sensors of variable length for the measurement of sap flow in trees with deep sapwood. *Tree Physiology* **22**(4):277–283 DOI [10.1093/treephys/22.4.277](https://doi.org/10.1093/treephys/22.4.277).
- Jasechko S, Sharp ZD, Gibson JJ, Birks SJ, Yi Y, Fawcett PJ. 2013.** Terrestrial water fluxes dominated by transpiration. *Nature* **496**:347–350 DOI [10.1038/nature11983](https://doi.org/10.1038/nature11983).
- Jaskierniak D, Kuczera G, Benyon RG, Lucieer A. 2016.** Estimating tree and stand sapwood area in spatially heterogeneous southeastern Australian forests. *Journal of Plant Ecology* **9**(3):272–284 DOI [10.1093/jpe/rtv056](https://doi.org/10.1093/jpe/rtv056).
- Jung EY, Otieno D, Lee B, Lim JH, Kang SK, Schmidt MWT, Tenhunen J. 2011.** Up-scaling to stand transpiration of an Asian temperate mixed-deciduous forest from single tree sapflow measurements. *Plant Ecology* **212**(3):383–395 DOI [10.1007/s11258-010-9829-3](https://doi.org/10.1007/s11258-010-9829-3).
- Kumagai T, Aoki S, Shimizu T, Otsuki K. 2007.** Sap flow estimates of stand transpiration at two slope positions in a Japanese cedar forest watershed. *Tree Physiology* **27**(2):161–168 DOI [10.1093/treephys/27.2.161](https://doi.org/10.1093/treephys/27.2.161).
- Kunert N, Schwendenmann L, Potvin C, Hölscher D. 2012.** Tree diversity enhances tree transpiration in a Panamanian forest plantation. *Journal of Applied Ecology* **49**(1):135–144 DOI [10.1111/j.1365-2664.2011.02065.x](https://doi.org/10.1111/j.1365-2664.2011.02065.x).
- Li S, Xu M, Sun B. 2014.** Long-term hydrological response to reforestation in a large watershed in southeastern China. *Hydrological Processes* **28**(22):5573–5582 DOI [10.1002/hyp.10018](https://doi.org/10.1002/hyp.10018).
- Lu P, Müller WJ, Chacko EK. 2000.** Spatial variations in xylem sap flux density in the trunk of orchard-grown, mature mango trees under changing soil water conditions. *Tree Physiology* **20**(10):683–692 DOI [10.1093/treephys/20.10.683](https://doi.org/10.1093/treephys/20.10.683).
- Lu P, Urban L, Ping Z. 2004.** Granier's thermal dissipation probe (TDP) method for measuring sap flow in trees: theory and practice. *Acta Botanica Sinica* **46**(6):631–646.
- Maherali H, Pockman WT, Jackson RB. 2004.** Adaptive variation in the vulnerability of woody plants to xylem cavitation. *Ecology* **85**(8):2184–2199 DOI [10.1890/02-0538](https://doi.org/10.1890/02-0538).
- Marod D, Sungkaew S, Mizunaga H, Thinkampheang S, Thongsawi J. 2020.** Woody plant community and distribution in a tropical coastal sand dune in southern Thailand. *Journal of Coastal Conservation* **24**:44 DOI [10.1007/s11852-020-00761-9](https://doi.org/10.1007/s11852-020-00761-9).
- Meinzer FC, Bond BJ, Warren JM, Woodruff DR. 2005.** Does water transport scale universally with tree size? *Functional Ecology* **19**(4):558–565 DOI [10.1111/j.1365-2435.2005.01017.x](https://doi.org/10.1111/j.1365-2435.2005.01017.x).
- Meinzer FC, Goldstein G, Andrade JL. 2001.** Regulation of water flux through tropical forest canopy trees: Do universal rules apply? *Tree Physiology* **21**(1):19–26 DOI [10.1093/treephys/21.1.19](https://doi.org/10.1093/treephys/21.1.19).
- Meinzer FC, Goldstein G, Holbrook NM, Jackson P, Cavelier J. 1993.** Stomatal and environmental control of transpiration in a lowland tropical forest tree. *Plant, Cell & Environment* **16**(4):429–436 DOI [10.1111/j.1365-3040.1993.tb00889.x](https://doi.org/10.1111/j.1365-3040.1993.tb00889.x).
- Menezes-Silva PE, Loram-Lourenço L, Alves RDFB, Sousa LF, Almeida SE da S, Farnese FS. 2019.** Different ways to die in a changing world: consequences of climate change

- for tree species performance and survival through an ecophysiological perspective. *Ecology and Evolution* **9**(20):11979–11999 DOI 10.1002/ece3.5663.
- Monteith JL, Unsworth MH. 1990.** *Principles of environmental physics*. London: Butterworth-Heinemann, 287.
- Nepstad DC, Tohver IM, David R, Moutinho P, Cardinot G. 2007.** Mortality of large trees and lianas following experimental drought in an amazon forest. *Ecology* **88**(9):2259–2269 DOI 10.1890/06-1046.1.
- Noguchi H, Suwa R, Adélia C, De Souza S, Kajimoto T, Ishizuka M. 2014.** Examination of vertical distribution of fine root biomass in a tropical moist forest of the Central Amazon, Brazil. *Japan Agricultural Research Quarterly* **48**:231–235 DOI 10.6090/jarq.48.231.
- O’Grady AP, Eamus D, Hutley LB. 1999.** Transpiration increases during the dry season: patterns of tree water use in eucalypt open-forests of northern Australia. *Tree Physiology* **19**(9):591–597 DOI 10.1093/treephys/19.9.591.
- Oishi AC, Hawthorne DA, Oren R. 2016.** Baseline: an open-source, interactive tool for processing sap flux data from thermal dissipation probes. *SoftwareX* **5**:139–143 DOI 10.1016/j.softx.2016.07.003.
- Oishi AC, Oren R, Stoy PC. 2008.** Estimating components of forest evapotranspiration: a footprint approach for scaling sap flux measurements. *Agricultural and Forest Meteorology* **148**(11):1719–1732 DOI 10.1016/j.agrformet.2008.06.013.
- Phillips N, Oren R. 1998.** A comparison of daily representations of canopy conductance based on two conditional time-averaging methods and the dependence of daily conductance on environmental factors. *Annals of Forest Science* **55**(1–2):217–235 DOI 10.1051/forest:19980113.
- Phillips N, Oren R. 2001.** Intra- and inter-annual variation in transpiration of a pine forest. *Ecological Applications* **11**(2):385–396 DOI 10.2307/3060896.
- RStudio Team. 2020.** RStudio: integrated development for R. Boston: RStudio, Inc. Available at <http://www.rstudio.com/>.
- Raquel Salas-Acosta E, Luis Andrade J, Adrián Perera-Burgos J, Us-Santamaría R, Figueroa-Espinoza B, Uuh-Sonda JM, Cejudo E. 2022.** Transpiration of a tropical dry deciduous forest in Yucatan, Mexico. *Atmosphere* **13**(2):271 DOI 10.3390/atmos13020271.
- Roberts J, Cabral OMR, Aguiar LF De. 1990.** Stomatal and boundary-layer conductances in an Amazonian terra firme rain forest. *Journal of Applied Ecology* **27**(1):336–353 DOI 10.2307/2403590.
- Rodtassana C, Unawong W, Yaemphum S, Chanthorn W, Chawchai S, Nathalang A, Brockelman WY, Tor-ngern P. 2021.** Different responses of soil respiration to environmental factors across forest stages in a Southeast Asian forest. *Ecology and Evolution* **00**:1–14 DOI 10.1002/ece3.8248.
- Rong L, Duan X, Feng D, Zhang G. 2017.** Soil moisture variation in a farmed dry-hot valley catchment evaluated by a redundancy analysis approach. *Water* **9**(2):92 DOI 10.3390/w9020092.

- Ryan MG, Phillips N, Bond BJ. 2006.** The hydraulic limitation hypothesis revisited. *Plant, Cell & Environment* **29**(3):367–381 DOI [10.1111/j.1365-3040.2005.01478.x](https://doi.org/10.1111/j.1365-3040.2005.01478.x).
- Schäfer KVR, Oren R, Tenhunen JD. 2000.** The effect of tree height on crown level stomatal conductance. *Plant, Cell & Environment* **23**(4):365–375 DOI [10.1046/j.1365-3040.2000.00553.x](https://doi.org/10.1046/j.1365-3040.2000.00553.x).
- Schwendenmann L, Pendall E, Sanchez-Bragado R, Kunert N, Hölscher D. 2015.** Tree water uptake in a tropical plantation varying in tree diversity: interspecific differences, seasonal shifts and complementarity. *Ecohydrol* **8**(1):1–12 DOI [10.1002/eco.1479](https://doi.org/10.1002/eco.1479).
- Spanner GC, Gimenez BO, Wright CL, Menezes VS, Newman BD, Collins AD, Jardine KJ, Negron-Juarez RI, Nogueira Lima AJ, Rodrigues JR, Chambers JQ, Higuchi N, Warren JM. 2022.** Dry season transpiration and soil water dynamics in the central Amazon. *Frontiers in Plant Science* **13**:825097 DOI [10.3389/fpls.2022.825097](https://doi.org/10.3389/fpls.2022.825097).
- Stibig HJ, Achard F, Carboni S, Rasi R, Miettinen J. 2014.** Change in tropical forest cover of Southeast Asia from 1990 to 2010. *Biogeosci* **11**:247–258 DOI [10.5194/bg-11-247-2014](https://doi.org/10.5194/bg-11-247-2014).
- Stovall AEL, Shugart H, Yang X. 2019.** Tree height explains mortality risk during an intense drought. *Nature Communications* **10**:4385 DOI [10.1038/s41467-019-12380-6](https://doi.org/10.1038/s41467-019-12380-6).
- Tagane S, Souladeth P, Nagahama A, Suyama Y, Ishii N, Tanaka N, Yahara T. 2020.** Twenty-five new species records in the flora of Laos. *Natural History Bulletin of the Siam Society* **64**(1):25–41.
- Tateishi M, Kumagai T, Utsumi Y, Umabayashi T, Shiiba Y, Inoue K, Kaji K, Cho K, Otsuki K. 2008.** Spatial variations in xylem sap flux density in evergreen oak trees with radial-porous wood: comparisons with anatomical observations. *Trees* **23**:23–30 DOI [10.1007/s00468-007-0165-8](https://doi.org/10.1007/s00468-007-0165-8).
- Theilade I, Schmidt L, Chhang P, McDonald JA. 2011.** Evergreen swamp forest in Cambodia: floristic composition, ecological characteristics, and conservation status. *Nordic Journal of Botany* **29**(1):71–80 DOI [10.1111/j.1756-1051.2010.01003.x](https://doi.org/10.1111/j.1756-1051.2010.01003.x).
- Tor-ngern P, Oren R, Palmroth S, Novick K, Oishi A, Linder S, Ottosson-Löfvenius M, Näsholm T. 2018.** Water balance of pine forests: Synthesis of new and published results. *Agricultural and Forest Meteorology* **259**:107–117 DOI [10.1016/j.agrformet.2018.04.021](https://doi.org/10.1016/j.agrformet.2018.04.021).
- Unawong W, Yaemphum S, Nathalang A, Chen Y, Domec JC, Tor-ngern P. 2022.** Variations in leaf water status and drought tolerance of dominant tree species growing in multi-aged tropical forests in Thailand. *Scientific Reports* **12**:6882 DOI [10.1038/s41598-022-10988-1](https://doi.org/10.1038/s41598-022-10988-1).
- Van Dijk AIJM, Keenan RJ. 2007.** Planted forests and water in perspective. *Forest Ecology and Management* **251**(1–2):1–9 DOI [10.1016/j.foreco.2007.06.010](https://doi.org/10.1016/j.foreco.2007.06.010).
- Van Kanten R, Vaast P. 2006.** Transpiration of arabica coffee and associated shade tree species in sub-optimal, low-altitude conditions of Costa Rica. *Agroforestry Systems* **67**(2):187–202 DOI [10.1007/s10457-005-3744-y](https://doi.org/10.1007/s10457-005-3744-y).

- Wang J, Fu B, Lu N, Wang S, Zhang L. 2019.** Water use characteristics of native and exotic shrub species in the semi-arid Loess Plateau using an isotope technique. *Agriculture, Ecosystems & Environment* **276**:55–63 DOI [10.1016/j.agee.2019.02.015](https://doi.org/10.1016/j.agee.2019.02.015).
- Wang J, Fu B, Wang L, Lu N, Li J. 2020.** Water use characteristics of the common tree species in different plantation types in the Loess Plateau of China. *Agricultural and Forest Meteorology* **288–289**:108020 DOI [10.1016/j.agrformet.2020.108020](https://doi.org/10.1016/j.agrformet.2020.108020).
- Wang D, Tang Y. 2014.** A one-parameter Budyko model for water balance captures emergent behavior in darwinian hydrologic models. *Geophysical Research Letters* **41**:4569–4577 DOI [10.1002/2014GL060509](https://doi.org/10.1002/2014GL060509).
- Wullschleger SD, Meinzer FC, Vertessy RA. 1998.** A review of whole-plant water use studies in trees. *Tree Physiology* **18(8–9)**:499–512 DOI [10.1093/treephys/18.8-9.499](https://doi.org/10.1093/treephys/18.8-9.499).
- Xu S, Yu Z. 2020.** Environmental control on transpiration: a case study of a desert ecosystem in northwest china. *Water* **12(4)**:1211 DOI [10.3390/W12041211](https://doi.org/10.3390/W12041211).
- Yaemphum S, Unawong W, Tor-Ngern P. 2022.** Sapwood area~DBH allometries for 14 common tree species in a successional tropical forest in Thailand. *Forestry* **95(4)**:562–571 DOI [10.1093/forestry/cpab054](https://doi.org/10.1093/forestry/cpab054).
- Zeng Z, Estes L, Ziegler AD, Chen A, Searchinger T, Hua F, Guan K, Jintrawet A, Wood EF. 2018.** Highland cropland expansion and forest loss in Southeast Asia in the twenty-first century. *Nature Geoscience* **11**:556–562 DOI [10.1038/s41561-018-0166-9](https://doi.org/10.1038/s41561-018-0166-9).
- Zeppel M, Eamus D. 2008.** Coordination of leaf area, sapwood area and canopy conductance leads to species convergence of tree water use in a remnant evergreen woodland. *Australian Journal of Botany* **56(2)**:97–108 DOI [10.1071/BT07091](https://doi.org/10.1071/BT07091).
- Zhang YJ, Meinzer FC, Hao GY, Scholz FG, Bucci SJ, Takahashi FSC, Villalobos-Vega R, Giraldo JP, Cao KF, Hoffmann WA, Goldstein G. 2009.** Size-dependent mortality in a Neotropical savanna tree: the role of height-related adjustments in hydraulic architecture and carbon allocation. *Plant, Cell & Environment* **32(10)**:1456–1466 DOI [10.1111/j.1365-3040.2009.02012.x](https://doi.org/10.1111/j.1365-3040.2009.02012.x).