

Shallow water heterobranch sea slugs (Gastropoda: Heterobranchia) from the Región de Atacama, northern Chile

Juan Francisco Araya^{1,2} and Ángel Valdés³

¹ Departamento de Geología, Universidad de Atacama, Copiapó, Región de Atacama, Chile

² Programa de Doctorado en Sistemática y Biodiversidad, Universidad de Concepción, Concepción, Chile

³ Department of Biological Sciences, California State Polytechnic University, Pomona, California, United States

ABSTRACT

The coast of northern Chile has been sparsely studied in regards to its invertebrate fauna, with just a few works reviewing the distribution of local mollusks. This work presents a survey of the shallow water heterobranch sea slugs currently occurring around the port of Caldera (27 °S), in the Región de Atacama, northern Chile. Eight species of sea slugs were found in this study: *Aplysiopsis* cf. *brattstroemi* (Marcus, 1959), *Baptodoris peruviana* (d'Orbigny, 1837), *Diaulula variolata* (d'Orbigny, 1837), *Doris fontainii* d'Orbigny, 1837, *Onchidella marginata* (Couthouy in Gould, 1852), *Phidiana lottini* (Lesson, 1831), *Tyrinna delicata* (Abraham, 1877) and the new species *Berthella schroedli* sp. nov., described herein. All of the species found in the area are endemic to South America, having distributions in the southeastern Pacific and South Atlantic Oceans, from Ancash, Perú to Peninsula Valdés, Argentina, and two of them represent species which are endemic to the Chilean coasts (*Aplysiopsis* cf. *brattstroemi* and *Berthella schroedli*). The finding of a previously undescribed species emphasizes the need of further surveys, particularly in subtidal and deeper waters, in order to improve the knowledge on this neglected fauna in Atacama.

Submitted 10 November 2015

Accepted 2 April 2016

Published 2 May 2016

Corresponding author

Juan Francisco Araya,

jfaraya@u.uchile.cl

Academic editor

Robert Toonen

Additional Information and
Declarations can be found on
page 15

DOI 10.7717/peerj.1963

© Copyright

2016 Araya & Valdés

Distributed under

Creative Commons CC-BY 4.0

OPEN ACCESS

Subjects Biodiversity, Conservation Biology, Marine Biology, Taxonomy, Zoology

Keywords Eastern Pacific, New taxa, Nudibranchia, Opisthobranchia, Pleurobranchidae, Sacoglossa, Onchidiidae, Chromodorididae, Dorididae, Shallow water

INTRODUCTION

The mollusks of the Región de Atacama, in northern Chile, have been sparsely studied; most of the species commonly present in the area were described in the nineteenth century (*Broderip & Sowerby, 1832; Sowerby, 1832; Sowerby, 1833; d'Orbigny, 1834–1847; Gould, 1852; Hupé, 1854; Gay, 1854, Philippi, 1860*, among others), with a few works reviewing species during the past century (*Dall, 1909; Gigoux, 1932; Gigoux, 1934; Rehder, 1945*) and, more recently, with several works describing new species (*Osorio, 2012; Araya, 2013; Araya, 2015a; Araya, 2015b; Miquel & Araya, 2013; Collado, 2015; Araya & Reid, 2016*) or giving new records (*Araya & Araya, 2015a*). Regarding heterobranch sea slugs in particular (sensu *Camacho-García et al. (2014)* and *Padula, Wirtz & Schrödl (2014)*),

Table 1 Heterobranch sea slugs found in the Region of Atacama, northern Chile; species, distribution, ecology and references. Occurring species involve those cited by *Marcus (1959)*, *Schrödl (1996a)*, *Schrödl (2003)*, and material examined in this work.

Species	Distribution	Ecology	References
<i>Aplysiopsis cf. brattstroemi</i> (<i>Marcus, 1959</i>)	Antofagasta (23°39'S; 70°25'W) to Bahía de Coliumo (36°32'S; 72°57'W), Chile	Sea floor, subtidal	<i>Schrödl (1996a)</i>
<i>Baptodoris peruviana</i> (d'Orbigny, 1837)	San Lorenzo (12 °S), Peru to Valparaiso, Chile (33°02'S, 71°38'W)	Sea floor, epifaunal, subtidal	<i>Fischer & Cervera (2005a)</i> and <i>Fischer & Cervera (2005b)</i>
<i>Berthella schroedli</i> sp. n.	Caldera (27 °S), Chile	Under sunken rocks, infaunal, subtidal	This work
<i>Diaulula variolata</i> (d'Orbigny, 1837)	Ica (14 °S), Perú to Bahía de San Vicente (36 °S), Chile	Sea floor, epifaunal, subtidal	<i>Fischer & Cervera (2005a)</i> , <i>Fischer & Cervera (2005b)</i> and <i>Uribe et al. (2013)</i>
<i>Doris fontainii</i> (d'Orbigny, 1837)	Islote Ferrol (09°08'22"S; 78°37'15"W), Ancash, Peru to northern Argentina	Sea floor, epifaunal, subtidal	<i>Uribe et al. (2013)</i> and <i>Valdés & Muniaín (2002)</i>
<i>Onchidella marginata</i> (Couthoy in <i>Gould, 1852</i>)	Iquique (20 °S), Chile to Isla de los Estados (coordinates), Argentina	Under rocks, epifaunal, intertidal	<i>Rosenfeld & Aldea (2010)</i>
<i>Phidiana lottini</i> (<i>Lesson, 1831</i>)	Callao (12°02'S), Peru to Comau Fjord (42°15'S; 72°25'12'W), Chile	Sea floor, epifaunal, subtidal	<i>Schrödl et al. (2005)</i> , <i>Uribe et al. (2013)</i> and <i>Schrödl & Hooker (2014)</i>
<i>Tyrinna delicata</i> (<i>Abraham, 1877</i>)	Isla Blanca (09 °S), Ancash, Peru to Peninsula Valdés, in the Atlantic Magellan Strait	Sea floor, epifaunal, subtidal	<i>Schrödl & Millen (2001)</i> and <i>Uribe et al. (2013)</i>

only the studies by *Bergh (1898)*, *Marcus (1959)*, *Schrödl (1996a)*, *Schrödl (1996b)*, *Schrödl (1997)*, *Schrödl (2003)*, *Fischer, van de Velde & Roubos (2007)* and most recently *Labrín, Guzmán & Sielfeld (2015)* have included species from northern Chile. However, a few recent papers dealing with the Peruvian fauna, including some species commonly found in Chilean waters (e.g., *Millen et al., 1994*; *Nakamura, 2006*; *Nakamura, 2007*; *Martynov & Schrödl, 2011*; *Uribe & Pacheco, 2012*; *Uribe et al., 2013*; *Schrödl & Hooker, 2014* and others) have also contributed to the knowledge of this group in the southeastern Pacific.

The present study provides records of sea slugs found in shallow waters around Caldera (27 °S), Región de Atacama, northern Chile. The coast of this area consists of rocky formations with sparse sandy beaches and a comparatively narrow intertidal zone. Rocky platforms, boulder fields and intertidal pools are common; however, some sheltered areas have open sandy beaches, usually exposed to strong surf. All of the species reviewed in this work are endemic to southern South America; with two of them presenting new distributional records in Chile ([Table 1](#)). The aim of this preliminary study is to contribute to the knowledge of the molluscan fauna in Chile, particularly from the largely neglected northern coasts.

MATERIALS AND METHODS

The material examined was collected in the summers of 2010–2012 in diverse locations near the port of Caldera (27 °S), Region of Atacama, northern Chile. All the collecting was made manually in the intertidal areas, mostly on rocky outcrops and tidal pools. The specimens were deposited in the collections of the Museo de Paleontología de Caldera (MPCCL), Caldera, Chile; Museo de Zoología de la Universidad de Concepción (MZUC),

Concepción, Chile, California State Polytechnic University Invertebrate Collection (CPIC), Pomona, USA, and in the collection of the Natural History Museum of Los Angeles County Museum (LACM), Los Angeles, USA. Field study permits were not required for this study and none of the species studied herein are currently under legal protection. All the collected specimens were preserved in 95% ethanol. Photographs of living animals were taken with a Canon A530 digital camera and a 10× geologic loupe. All sizes given are living measurements, radular features were examined by scanning electron microscopy (SEM). Color plates were composed with basic image programs and colors of the images were not modified.

In order to characterize genetically and barcode the new species of *Berthella*, DNA extraction was performed using a hot Chelex[®] protocol. Approximately 1–3 mg tissue was taken from one animal and cut into fine pieces for extraction, the tissue was rinsed and rehydrated using 1.0 mL TE buffer (10 mM Tris, 1 mM EDTA, pH 8.0) for 20 min. A 10% (w/v) Chelex[®] 100 (100–200 mesh, sodium form; Bio-Rad) solution was prepared using TE buffer. After rehydration, the mixture was then centrifuged, 975.00 mL of the supernatant was removed, and 175.00 mL of the Chelex[®] solution was added. Samples were then incubated at 56 °C in a water bath for 20 min, heated to 100 °C in a heating block for 8 min, and the supernatant was used for PCR. Folmer's universal COI primers (Folmer *et al.*, 1994) were used to amplify the region of interest for one specimen. The master mix (for each sample) was prepared using 34.75 µL H₂O, 5.00 µL PCR Buffer (ExACTGene; Fisher Scientific), 5.00 µL 25 mM MgCl₂, 1.00 µL 40 mM dNTPs, 1.00 µL 10 µM primer 1, 1.00 µL primer 2, 0.25 µL 5 mg/mL Taq, and 2.00 µL extracted DNA. Reaction conditions were an initial denaturation for 3 min at 95 °C, 39 cycles of 1) denaturation for 45 sec at 94 °C, 2) annealing for 45 sec at 45 °C, and 3) elongation for 2 min at 72 °C, and a final elongation for 10 min at 72 °C. PCR products yielding bands of appropriate size (approximately 695 bp) were purified using the Montage PCR Cleanup Kit (Millipore). Cleaned PCR samples were quantified using a NanoDrop 1000 Spectrophotometer (Thermo Scientific). Sequencing was outsourced to Source Bioscience (Santa Fe Springs, CA, USA). The sequence was assembled and edited using Geneious Pro 8.1.7 (Kearse *et al.*, 2012). Geneious was also used to extract the consensus sequence, which was 658 bp long and is deposited in GenBank (GenBank Voucher Number KU551261).

The electronic version of this article in Portable Document Format (PDF) will represent a published work according to the International Commission on Zoological Nomenclature (ICZN), and hence the new names contained in the electronic version are effectively published under that Code from the electronic edition alone. This published work and the nomenclatural acts it contains have been registered in ZooBank, the online registration system for the ICZN. The ZooBank LSIDs (Life Science Identifiers) can be resolved and the associated information viewed through any standard web browser by appending the LSID to the prefix <http://zoobank.org/>. The LSID for this publication is: urn:lsid:zoobank.org:pub:088D994A-9E1E-4324-A6DF-FCCC2B0E3437. The online version of this work is archived and available from the following digital repositories: PeerJ, PubMed Central and CLOCKSS.

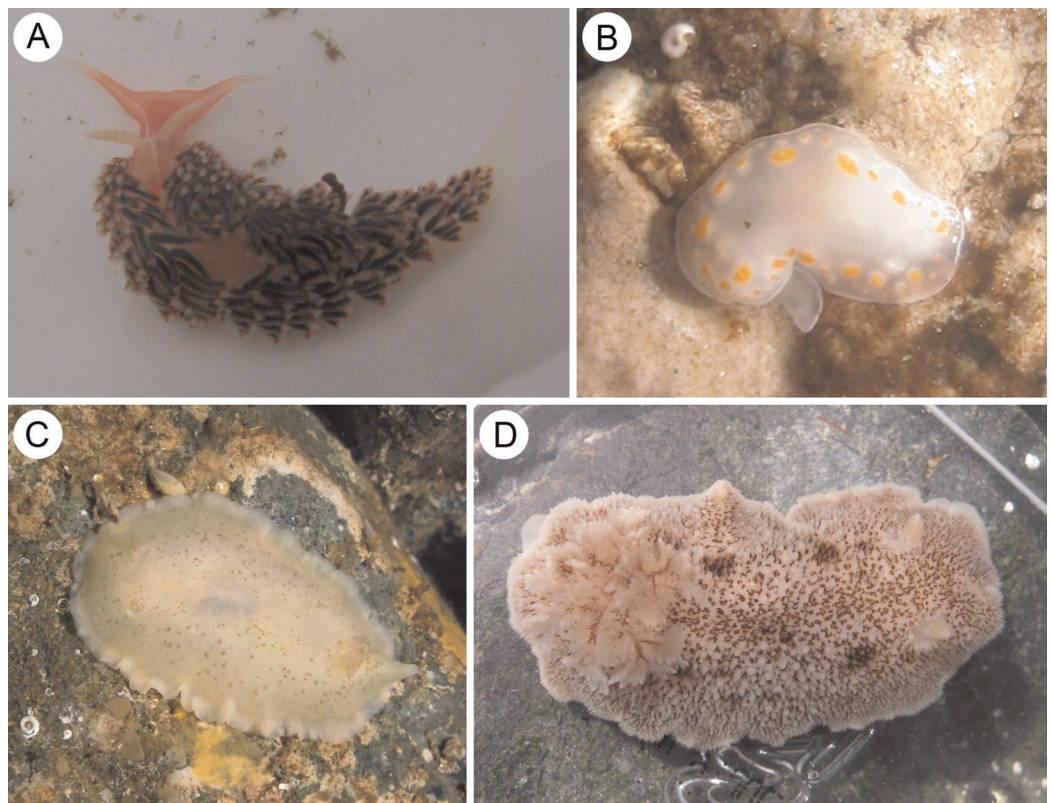


Figure 1 Species of heterobranch sea slugs found near Caldera, Atacama region, northern Chile (all specimens photographed in situ). (A) *Phidiana lottini* (Lesson, 1831), Calderilla Beach, inside a valve of *Argopecten purpuratus* (Lamarck, 1819), L = 23 mm; (B) *Tyrinna delicata* (Abraham, 1877), Obispito Bay, L = 10 mm; (C) *Baptodoris peruviana* (d'Orbigny, 1837), Ramada Beach, L = 23 mm; (D) *Diaulula variolata* (d'Orbigny, 1837), El Pulpo Beach, L = 34 mm.

RESULTS

Systematics

Heterobranchia

Order Nudibranchia Cuvier, 1817

Superfamily Aeolidioidea Gray, 1827

Family Facelinidae Bergh, 1889

Genus *Phidiana* Gray, 1850

Type species *Eolidia patagonica* d'Orbigny, 1836, by subsequent designation by Alder & Hancock (1855).

Phidiana lottini (Lesson, 1831) (Fig. 1A)

Eolidia lottini Lesson, 1831: 290, pl. 14, fig. 6. *Cavolina lottini* d'Orbigny, 1837: 194.

Phidiana inca Gray, 1850: 108; Bergh, 1867: 100, pl. 3, figs. 1–13; Marcus, 1959: 79, figs. 184–190; Álamo & Valdivieso, 1997: 85. *Phidiana lottini* Schrödl, 1996a: 41, pl. II,

fig. 13, pl. VII, fig. 41; [Schrödl, 2003](#): 83, figs. 51, 63, 64, 88; [Schrödl, 2009](#): 539; [Schrödl et al., 2005](#): 7, pl. 2, fig. 17; [Uribe et al., 2013](#): 52, fig. 3J; [Schrödl & Hooker, 2014](#): 54, figs. 12, 13; [Uribe et al., 2014](#): 167. A detailed chresonymy can be found in [Schrödl \(2003\)](#).

Material examined: Two specimens collected in a tidal pool in rocky outcrops, Playa Brava (27°03'S; 70°49'W), Caldera, Región de Atacama, Chile (MZUC 39608); and one specimen collected inside an empty *Austromegabalanus psittacus* shell in Calderilla (27°05'S; 70°50'W), Caldera, Región de Atacama, Chile (MPCCL 90216A).

Diagnosis: Elongate body of silky white to sometimes reddish color, covered by 20–26 parallel rows of conspicuously colored cerata. Dorsum with a fine longitudinal white line. Cerata with bands of brown and orange at base and with bright whitish tips. Rhinophores annulate, yellowish white. Oral tentacles long and pinkish-white. Anterior foot corners slightly extended.

Distribution: *Phidiana lottini* has been recorded in Chile from Punta Blanca, Arica (18°29'S; 70°20'W) to the Guaitecas Islands (44 °S), southern Chile ([Schrödl, 2003](#); [Schrödl & Hooker, 2014](#)). This species has also been recorded from Ancash, Isla Santa, Lima, and Callao (12°02'S), central Peru ([Uribe et al., 2013](#); [Schrödl & Hooker, 2014](#)).

Remarks: *Phidiana lottini* is easily recognizable from other aeolid sea slugs found in northern Chile because of the cerata arranged in parallel rows and the presence of a white dorsal line between the rhinophores. This is a comparatively common nudibranch in the area, usually found in protected localities. Egg masses of this species are loosely coiled whitish spiral ribbons, of about 30 mm in diameter (see [Schrödl, 2003](#)).

Superfamily Doridoidea

Family Chromodorididae Bergh, 1891

Genus *Tyrinna* Bergh, 1898

Type species *Tyrinna nobilis* Bergh, 1898 (= *Tyrinna delicata* (Abraham, 1877)), by monotypy.

Tyrinna delicata (Abraham, 1877) (Fig. 1B)

Doris delicata Abraham, 1877: 211, pl. XXX, figs. 20–22. *Tyrinna nobilis* Bergh, 1898: 523, pl. 30, figs. 21–29, pl. 32, figs. 21–24; [Marcus, 1959](#): 31, figs. 45–53; [Muníaín, Valdés & Ortea, 1996](#): 265, figs. 2–6; [Schrödl, 1996a](#): 22, pl. 3, fig. 15; [Schrödl, 1997](#): 41; [Schrödl, 2003](#): 31, figs. 15, 70; [Schrödl et al., 2005](#): 4, pl. 1, fig. 8; [Schrödl & Millen, 2001](#): 1146, figs. 1–6; [Schrödl, 2009](#): 521; [Aldea, Céspedes & Rosenfeld, 2011](#): 43, fig. 3C. [Uribe et al., 2013](#): 48, fig. 2A. *Tyrinna pusae* Marcus, 1959: 33, figs. 54–64. A detailed chresonymy can be found in [Schrödl \(2003\)](#).

Material examined: One specimen collected under rocks at low tide, in tidal pools in rocky outcrops, South of Obispito (26°45'51"S; 70°45'07"W), Caldera, Región de Atacama, Chile (MPCCL 90216B).

Diagnosis: Body oval-elongate, translucent-whitish, with opaque white lines surrounding the edges of foot and mantle. Dorsum smooth, with irregular and submarginal rows of orange spots, absent from the central region of mantle. Oral tentacles longitudinally enrolled.

Anterior part of foot bilabiate, forming a thick lip. Posterior end of the foot extending beyond the mantle in crawling individuals (see [Uribe et al. \(2013\)](#) for a more complete description).

Distribution: From Isla Blanca (09 °S), Ancash, Peru to Peninsula Valdés, in the Atlantic Magellan Strait ([Schrödl & Millen, 2001](#); [Uribe et al., 2013](#)). This species has been also recorded in the Juan Fernández Islands, off central Chile.

Remarks: *Tyrinna delicata* is clearly distinguishable from other nudibranchs in northern Chile by the submarginal dorsal rows of orange spots, which are very visible in the translucent whitish mantle. This species, having a complex synonymy, was listed as *Tyrinna nobilis* until recent, however the discovery of the holotype of *Tyrinna delicata* ([Abraham, 1877](#)) by [Schrödl & Millen \(2001\)](#) gave priority to the latter name.

Family Discodorididae Bergh, 1891

Genus *Baptodoris* Bergh, 1884

Type species *Baptodoris cinnabarina* Bergh, 1884, by monotypy.

Baptodoris peruviana (d'Orbigny, 1837) (Fig. 1C)

Doris peruviana d'Orbigny, 1837: 188, pl. XV, figs. 7–9. *Doriopsis peruviana* [Dall, 1909](#): 203. *Platydoris punctatella* [Bergh, 1898](#): 521, figs. 12–20; [Dall, 1909](#): 203; [Schrödl, 1996a](#): 23, pl. IV, fig. 27. *Dendrodoris peruviana* [Álamo & Valdivieso, 1997](#): 85. *Platydoris peruviana* [Schrödl, 2003](#): 34, figs. 17, 54, 71. *Baptodoris peruviana* [Fischer & Cervera, 2005a](#): 515, figs. 1–8. [Uribe et al., 2013](#): 51, fig. 3D. *Baptodoris? peruviana* [Schrödl & Hooker, 2014](#): 48, fig. 4.

Material examined: One specimen collected under rocks at very low tide, Playa Ramada (27°00'S; 70°48'W) Caldera, Región de Atacama, Chile (MZUC 39607).

Diagnosis: Elevated, oval and slightly convex white-yellowish body, with minute brown spots over the notum which is densely covered by very small rounded caryophyllidia. Rhinophores and gills hyaline white, not elevated. Rhinophores are perfoliate with 7–10 lamellae. The branchial tuft consists of 6 uni-bipinnate gills, which form a circle around the anus at the posterior end of the body. Ventrally, the head is small with short digitiform oral tentacles. The foot is narrow, with the anterior edge notched at the mid-line and grooved. The notal margin is white and wider than the foot (see [Fischer & Cervera \(2005a\)](#) for a complete description).

Distribution: According to [Fischer & Cervera \(2005a\)](#), this species has been recorded from South of San Lorenzo Island, Lima, Peru to Valparaiso, (33°02'S; 71°38'W) Chile.

Genus *Diaulula* Bergh, 1884

Type species *Doris sandiegensis* (Cooper, 1863), by monotypy.

Diaulula variolata (d'Orbigny, 1837) (Fig. 1D)

Doris variolata d'Orbigny, 1837: 186, pl. 16, figs. 1–3. *Anisodoris marmorata* [Marcus, 1959](#): 45, figs. 98–103; [Schrödl, 2003](#): 41, figs. 21, 57, 75; [Fischer & Cervera, 2005b](#): 174. [Uribe et al., 2013](#): 48, fig. 2B. *Anisodoris marmorata* [Bergh, 1898](#): 515, pl. 30, figs. 5–7 (non *Archidoris marmorata* Bergh, 1881); [Marcus, 1959](#): 45, figs. 98–103. *Anisodoris rudberghi*

Marcus & Marcus, 1967: 69; *Schrödl, 1996a*: 25, pl. IV, figs. 21–22; *Schrödl, 1996b*. *Peltodoris marmorata* *Valdés & Muniain, 2002*: 349, figs. 1D, 4, 5. A detailed chresonymy can be found in *Schrödl (2003: 39)*.

Material examined: One specimen collected under rocks at very low tide, North of Obispito (26°45'S; 70°45'W), 40 km N of Caldera, Región de Atacama, Chile (MZUC 39606).

Diagnosis: Whitish-yellowish body with minute black spots over the notum, which is densely covered by small and narrow caryophyllidia. Wide free mantle rim. Rhinophoral and branchial sheaths elevated, covered with caryophyllidia. Six to seven gills, ramified up to four-five times. Oral tentacles long and digitiform. Foot bilabiate, with upper lip notched. Lip cuticle smooth. Rhinophores have more than 15 lamellae (see *Schrödl (2003)* for a complete description).

Distribution: This species has been recorded in Chile from Arica (18 °S) to the Bahía de San Vicente (36 °S), and most recently from Ica, Perú (*Uribe et al., 2013*).

Family Dorididae Rafinesque, 1815

Genus *Doris* Linnaeus, 1758

Type species *Doris verrucosa* Linnaeus, 1758, by monotypy.

Doris fontainii d'Orbigny, 1837 (Fig. 2A)

Doris fontainii d'Orbigny, 1837: 189, pl. 15, figs. 1–3. *Anisodoris fontainii* *Odhner, 1926*: 85, figs. 70–72, pl. 3, figs. 47–49; *Schrödl, 1996a*: 24, pl. III, fig. 19; *Schrödl, 2000b*: 73, fig. 2–3. *Doris fontainei* *Gay, 1854*: 76; *Valdés & Muniain, 2002*: 346, figs. 1A–B, 2A–C, 3A–B; *Uribe et al., 2013*: 51, fig. 3E; *Schrödl & Hooker, 2014*: 47, fig. 2. *Archidoris fontainii* *Schrödl, 2003*: 45, figs. 24, 58, 76; *Schrödl, 2009*; *Schrödl et al., 2005*: 4, pl. 2, fig. 9; *Schrödl & Grau, 2006*: 5, fig. 2A–B.

Material examined: One specimen collected in a tidal pool at Playa El Jefe (27°03'46"S; 70°49'W), Caldera, Región de Atacama, Chile (MZUC 37642).

Diagnosis: Orange to brownish body coloration, with a highly arched and large body (up to 10 cm according to *Schrödl & Hooker (2014)*). Notum covered with many small (up to 5 mm in diameter) rounded tubercles. Five to seven tri- to quadripinnate gills. Gills and rhinophores surrounded by elevated sheaths with small tubercles. Oral tentacles triangular, grooved. Foot broad, anteriorly bilabiate and notched. Lip cuticle smooth (see *Schrödl (2003)* for a complete description).

Distribution: This species has been recorded from Ancash, Isote Ferrol, Peru (*Uribe et al., 2013*) to northern Argentina (*Valdés & Muniain, 2002*).

Remarks: This species is easily recognizable due to its large size, brilliant orange body color and a mantle covered with conspicuous rounded tubercles. Of the examined specimens, none had the dark brown pigment between the tubercles, which *Schrödl et al. (2005)*, regarded as characteristic of central and northern Chilean specimens. This was the most common species in the area; they are usually found in the subtidal zone but specimens were also collected from tidal pools at low tide. According to some commercial divers this species is common below 3 m depth near Bahía Inglesa (27°07'S; 70°52'W), south of Caldera.



Figure 2 Species of heterobranch sea slugs found near Caldera, Atacama region, northern Chile (all specimens photographed in situ). (A) *Doris fontainii* d'Orbigny, 1837, Playa El Jefe, L = 54 mm; (B) *Aplysiopsis* cf. *brattstroemi* (Marcus, 1959), Brava Beach, specimen found among filamentous algae in tidal pool, L about 4 mm; (C) *Onchidella marginata* (Couthouy in Gould, 1852), Playa El Pulpo, L = 12 mm (largest specimen).

Order Pleurobranchomorpha Schmekel, 1985

Superfamily Pleurobranchoidea Gray, 1827

Family Pleurobranchidae Gray, 1827

Genus *Berthella* Blainville, 1824

Type species *Bulla plumula* Montagu, 1803, by original designation.

Berthella schroedli sp. nov.

urn:lsid:zoobank.org:act:9F1D698F-96FB-40B0-A972-3C1F6F15014C (Figs. 3A–3C, 4A–4D, 5A, 5B and 6C).

Type material: Holotype MPCCL 90216C, paratypes: LACM 3327 (4 specimens), MPCCL 90216D (4 specimens); other material: CPIC 000827 (5 specimens). All the type material collected at the type locality and preserved in ethanol 96%.

Type locality: Playa El Pulpo (27°01'22"S; 70°48'30"W), Comuna de Caldera, Región de Atacama, Chile, intertidal under sunken rocks in rocky coast, 1 m depth, 29 December 2012, coll. & leg. JF Araya.

Diagnosis: Intertidal *Berthella* species with a dark brown-reddish shell decorated with pale radial lines; visible through the translucent yellowish mantle, with an oval and slightly crenulated margin and very small tubercles covering the notum.

Description: Body reaching lengths up to 25 mm in fully extended living specimens (Figs. 3A, 3B and 6C). Body uniformly pale yellowish, translucent; with an internal shell of brownish-reddish color, visible through the mantle. Mantle with a smooth appearance, but with very small tubercles covering the dorsum which gives the animal, at high magnification, a somewhat wrinkled appearance. The mantle processes do not show obvious spicules. Dark and minute eyes located behind the base of the rhinophores, hidden beneath the anterior edge of the mantle (Fig. 3B). Notum wide, oval and slightly crenulated, with a broad free margin around. Gill and foot covered by the notum in living specimens, and oral veil and rhinophores partially covered in their posterior part.

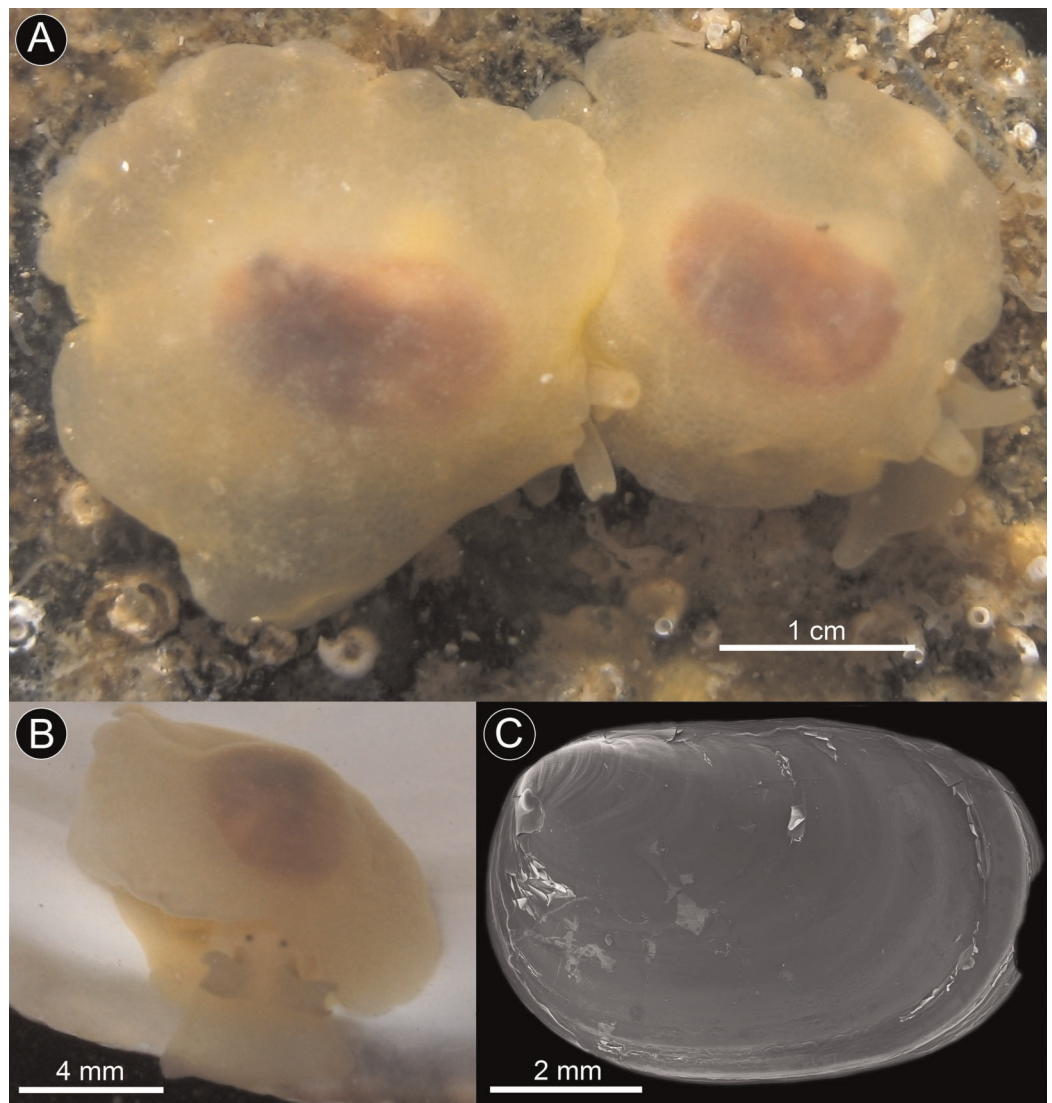


Figure 3 *Berthella schroedeli* sp. nov. (A) Specimens photographed in situ, under rocks at low tide, Aguas Verdes; (B) Detail of specimen showing the eyes; (C) SEM image of shell (LACM 3327).

Mantle lacking an anterior notch. Rhinophores short and stout, joined together at the base. Foot bilabiate anteriorly. Oral veil trapezoidal, protruding from the mantle. Gill located on the right side of the body, lying longitudinally between the mantle and the foot; it is attached to the body for more than half of its length. Gill bipinnate, with 13 pinnae on either side of the rachis. Rachis smooth, lacking tubercles. Anus located dorsal to the central area of the gill. Egg masses are small white spiral ribbons, up to about 25 mm in diameter (Fig. 6C).

Shell: Shell fully internal, flattened, rectangular/oval in shape, elongate and located centrally in the dorsal area, where it covers completely the viscera. Shell reddish brown in color, somewhat nacreous/iridescent, with radial rays of pale yellowish which are visible through the mantle in living specimens. Margins of shell sharp and fragile. Protoconch of about 300 μm in diameter, smooth under low magnification. Teleoconch with fine

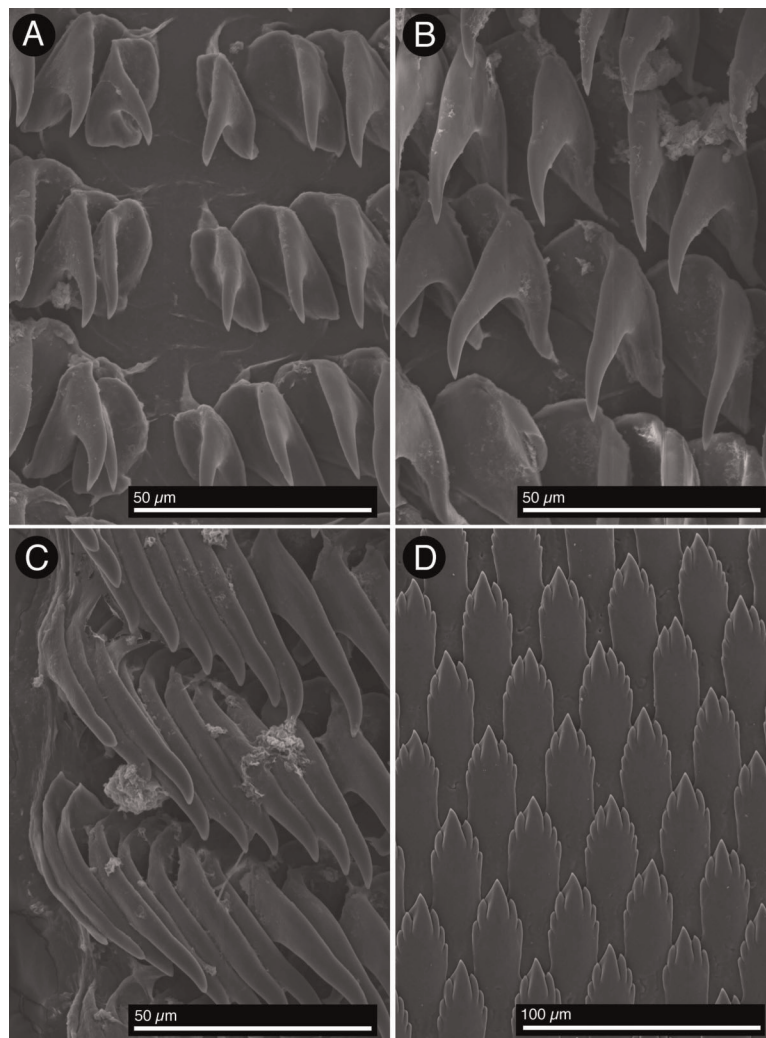


Figure 4 *Berthella schroedeli* sp. nov., SEM images (LACM 3327). (A) Radular teeth, central portion of the radula; (B) Outermost radular teeth; (C) Lateral teeth, middle portion of the half row; (D) Detail of the jaw platelets.

concentric ridges crossed by very fine radial striae, the first whorls have a cancellated sculpture (Fig. 3C). *Radula*: Radular formula: $50\text{--}53 \times 45\text{--}56.045\text{--}56$. Radular teeth hook-shaped lacking denticles (Fig. 4A). Innermost lateral teeth slightly smaller than those from the middle portion of the half row (Fig. 4B). Outermost lateral teeth with a much more elongate cusp than the mid laterals (Fig. 4C). Jaws with elongate cruciform elements rather slender, elongate and lanceolate with a narrower base; each element consisting of a central cusp flanked by 2–3 denticles on either side of a prominent central cusp (Fig. 4D). *Reproductive system*: The ampulla is long and muscular, merging proximally into the female gland complex. The penis is wide, with an elongate tip; it connects proximally into a short deferent duct that splits into the prostate and the elongate, muscular penial gland. The prostate is convoluted and connects proximally to the female gland complex. A small, unidentified glandular structure connects distally

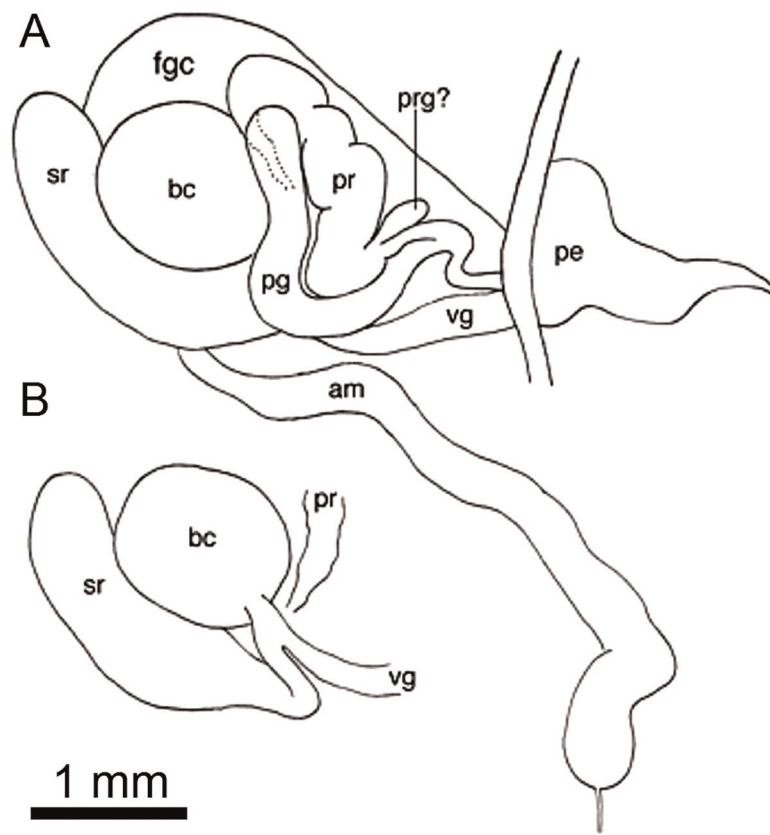


Figure 5 Reproductive anatomy of *Berthella schroedli* sp. nov. (A) Dorsal view of the reproductive system; (B) Detail of some organs covered by the prostate and penial gland. Abbreviations used are: am, ampulla; bc, bursa copulatrix; fgc, female gland complex; pe, penis; pg, penial gland; pr, prostate; sr, seminal receptacle; vg, vagina.

into the prostate and is here referred to provisionally as prostatic gland (prg? in Fig. 5A). The vagina is elongate, straight; it narrows and connects to the round and large bursa copulatrix. The seminal receptacle is elongate, muscular and about twice as long as the bursa copulatrix; it connects to the vagina before it enters the bursa copulatrix. A uterine duct could not be observed (Fig. 5).

Habitat: This species is found exclusively under rocks sunken at low tide in an almost infaunal habitat; it can be found associated to encrusting sponges, bryozoans, encrusting algae and to communities of micromollusks including *Acar pusilla* (Sowerby, 1833), *Brachidontes granulata* (Hanley, 1843), *Liotia cancellata* Gray, 1848 and *Mitrella unifasciata* (Sowerby, 1832).

Distribution: This species is somewhat rare but broadly distributed in the area of study; small populations were found only in four localities, in about 40 km of coast, always under rocks. According to Schrödl (2003) this genus has records in southern, South America from the southernmost Patagonian shelf (Burdwood Bank), southeastern Atlantic Ocean to southern Chile and north to Quiriquina Island, central Chile. The genus thus extends its distribution in Chile more than 1,100 km to the north.

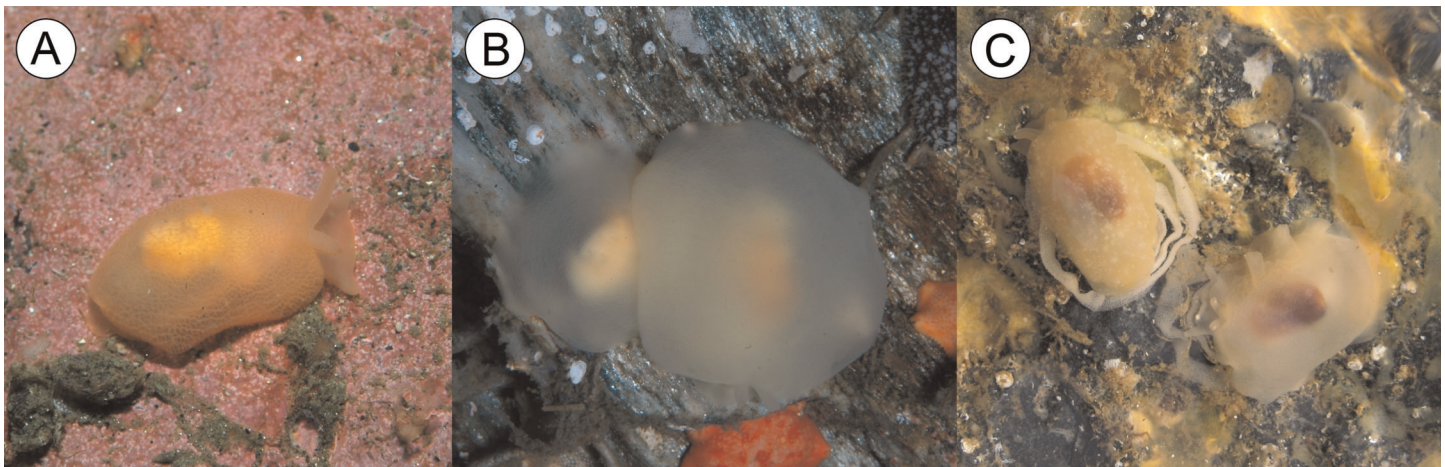


Figure 6 Chilean *Berthella* species. (A) and (B) specimens of *Berthella platei* (Bergh, 1898) photographed in situ, Caleta de Arena, 20 m depth and Valdivia respectively (photos (A) and (B) courtesy of Dirk Schories); (C) *Berthella schroedli* sp. nov., specimen sitting on egg masses, Obispito, Caldera.

Etymology: Named in honor of Michael Schrödl (Zoologische Staatssammlung München, Munich, Germany), for his extensive contributions to the Chilean opisthobranchs.

Remarks: Of the 16 valid species of *Berthella* known worldwide (Hermosillo & Valdés, 2008), only two have been reported for southern South America: *Berthella patagonica* (d'Orbigny, 1837) and *Berthella platei* (Bergh, 1898). The western Atlantic *Berthella patagonica*, distributed from Central Argentina to Peninsula Valdés, southern Argentina (Schrödl, 2003), differs from the new species in having smaller body dimensions, with a very narrow free mantle rim and a notum apparently lacking a porous texture and not covering completely the foot which, in contrast to the new species, has a quadrangular outline (Schrödl, 1999; Schrödl, 2003). The Magellanic *Berthella platei*, distributed from the Burdwood Bank, southeastern Atlantic Ocean to Quiriquina Island, Central Chile (Schrödl, 1999), differs from the new species in having a more translucent body, of uniform pale pink to pale orange or whitish coloration of living animals (Figs. 6A and 6B), a higher number (15–24) of branchial lamellae versus 11–14 in *B. schroedli* sp. n. and a paler internal shell, translucent brown to greyish in color, in contrast to the characteristic reddish-brown shell with faint whitish axial streaks of the new species. The radular formula and the elements of the jaws also differ; *Berthella schroedli* sp. n. have fewer radular rows and less teeth per half row than *B. platei*, and it has also larger elongate and lanceolate elements with a narrower base and thin denticles, while *B. platei* have smaller and more triangular elements with a broader base and slightly broader denticles (see Schrödl, 1999). The shell length in relation to the body size in *B. schroedli* is also comparatively larger than in *B. platei*. In regard to their habitat; the new species has been found almost solely under sunken rocks in relatively shallow water in the intertidal; while *Berthella platei* is found only subtidally, living in the ocean floor usually under 5 m depth (Dirk Schories, 2013, personal communication). A BLAST-n of the COI sequence of *B. schroedli* sp. n. returned that the most similar sequence belongs to *Berthella*

plumula (AY345025) and is only 84% identical. The sequence of *B. schroedli* sp. n. is only 83% identical to a sequence of *Berthella platei* (FJ917492), providing additional evidence that this species is distinct.

Other Eastern Pacific species of *Berthella* include *Berthella agassizi* (MacFarland, 1909); *Berthella californica* (Dall, 1900); *Berthella grovesi* Hermosillo & Valdés, 2008; *Berthella martensi* (Pilsbry, 1896); *Berthella stellata* (Risso, 1826) and *Berthella strongi* (MacFarland, 1966). All these species differ from *Berthella schroedli* sp. n. in their subtidal rather than intertidal habitat, and also chiefly in their external coloration, by having opaque white spots (*B. agassizii*, *B. strongi*) or light brown spots and/or an orange body with dark brown lines and spots (*B. martensi*), a marginal notal band (*B. californica*), dark spots in the middle of thick opaque white ringlets (*B. grovesi*) or a dorsal streak of white running perpendicularly across the notum, which is translucent white or honey colored (*B. stellata*).

Order Sacoglossa Ihering, 1876

Superfamily Limapontioidea Gray, 1847

Family Hermaeidae Adams & Adams, 1854

Genus *Aplysiopsis* Deshayes, 1853

Type species *Aplysiopsis elegans* Deshayes, 1853, by monotypy.

Aplysiopsis cf. *brattstroemi* (Marcus, 1959) (Fig. 2B)

Hermaeina brattstroömi Marcus, 1959: 21, figs. 21–27. *Aplysiopsis brattstroemi* Schrödl, 1996a: 45, pl. VIII, fig. 52; Fischer & Cervera, 2005a: 167; Jensen, 2007: 279.

Material examined: One specimen photographed alive (not collected); on filamentous algae in tidal pool at very low tide, Playa Brava (27°03'S; 70°49'W), Caldera, Región de Atacama, Chile.

Diagnosis: Body minute, up to about 5 mm in examined specimen, with an elongated body, narrowed anteriorly; of brown to deep greenish-black color, with two clear areas at the sides of the head. Several rows of flat longitudinal cerata in the border of the mantle. Enrolled rhinophores. Size up to about 3 cm (see Marcus (1959) for a complete description).

Distribution: *Aplysiopsis brattströmi* has a discontinuous distribution from Antofagasta (23°39'S; 70°25'W), to Bahía de Coliumo (36°32'S; 72°57'W) in Chile (Schrödl, 1996a). The definite allocation of this specimen is currently not possible as, unfortunately, it was not collected.

Order Systellommatophora Pilsbry, 1948

Superfamily Onchidioidea Rafinesque, 1815

Family Onchidiidae Rafinesque, 1815

Genus *Onchidella* Gray, 1850

Type species *Onchidium nigricans* Quoy & Gaimard, 1832, by subsequent designation by Fischer and Crosse (1878).

***Onchidella marginata* (Couthouy in Gould, 1852) (Fig. 2C)**

Peronia marginata Couthouy in Gould, 1852: 292; Atlas, 1856: pl. 22, figs. 386a–c. *Onchidium chilense* Gay, 1854: 120. *Onchidella marginata* Marcus, 1959: 16, figs. 17–20. Dayrat, 2009: 13. Rosenfeld & Aldea, 2010: 35, figs. 1A–B. A more complete synonymy can be found in Dayrat (2009).

Material examined: Ten specimens collected under small rock slabs at low tide, Playa El Pulpo (27°03'S; 70°49'W), Caldera, Región de Atacama, Chile (MZUC 280316).

Diagnosis: Body elongate ovate, narrowed anteriorly; back very convex, deep greenish-black, very thickly covered with minute tubercles; margin ornamented with alternate bars of black and white; head broad, bilobed in front, and projecting considerably beyond the mantle when the animal is in motion, of a pale yellow color, tinted bluish about the mouth; tentacles rather long, and bulbous at the extremity, pale slate-color, except at the tips, which are black; under side of the mantle pale yellowish, becoming greenish at the margin, where it shows alternate bands of green and pale yellow (see Gould (1852) for a complete description).

Distribution: *Onchidella marginata* has a discontinuous distribution from Iquique (20 °S) to the Magallanes Strait (55 °S) in Chile, and to the Isla de los Estados in the South Atlantic of Argentina (Rosenfeld & Aldea, 2010).

Remarks: This is the only pulmonate sea slug found in Chile (Valdovinos, 1999; Dayrat, 2009); it is usually found in small communities living under rocks and camouflaging against their surroundings. In the area under study this species share its habitat with other mollusks as the limpet *Lottia orbigny* (Dall, 1909), and the chitons *Chaetopleura peruviana* (Lamarck, 1819) and *Radsia barnesi* (Gray, 1828).

DISCUSSION

The present work updates the knowledge on the scarcely known marine fauna of northern Chile (in particular from the Región de Atacama); from the 65 species of sea slugs (only including Nudibranchia and Pleurobrancoidea) recorded to live in Chilean waters (Schrödl, 2003), eight species were recorded in the Región de Atacama, accounting for about 12% of the Chilean sea slug fauna. All of the species occurring in the area have widespread ranges in the southeastern Pacific Ocean, from Ancash, Peru to the Strait of Magellan, in southern Chile and in the South Atlantic Ocean, to Peninsula Valdés, in Argentina (Table 1). With the exception of *Berthella schroedli* sp. n., all of the species found in the Región de Atacama also occur in central and southern Chile. The absence of species previously cited for the area (Schrödl, 1996a; Schrödl, 2003; Schrödl & Hooker, 2014), for example *Corambe lucea* Marcus, 1959; *Janolus rebecca* Schrödl, 1996a; Schrödl, 1996b; *Okenia luna* Millen et al., 1994 and *Thecacera darwini* Pruvot-Fol, 1950, among others, could be explained due to the limit of sampling depth, which was restricted to the lower intertidal areas with a maximum of 2 m depth.

Heterobranch sea slugs have been rarely treated in studies reviewing the biodiversity of mollusks from northern Chile (e.g. Marincovich, 1973; Guzmán, Saá & Ortlieb, 1998), despite the comparatively high number of species recorded in the country. This is in part explained by the current lack of experts working actively in the field and the

difficulties involved in collecting and preserving marine slugs. The finding of a new species of *Berthella* in northern Chile also highlights the need of further studies in the area or in northern Chile in general, which have recently revealed new invertebrate species (Reiswig & Araya, 2014; Collado, 2015) or new distributions for obscure or rare species, both from shallow and deeper waters (e.g. Araya & Aliaga, 2015; Araya & Araya, 2015b; Araya, Aliaga & Araya, 2015; Araya, 2015c; Fischer, van der Velde & Roubos, 2007; Labrín, Guzmán & Sielfeld, 2015).

ACKNOWLEDGEMENTS

We are very grateful to Marta Araya (Caldera, Chile) for her assistance in field collecting, to Carlo Magenta Cunha (Academy of Natural Sciences of Drexel University, Philadelphia, USA), and to Cecilia Osorio (Universidad de Chile, Santiago, Chile) for their help with essential bibliography, to Dirk Schories (University of Rostock, Rostock, Germany) for his help with the images and information on *Berthella platei* from southern Chile and to Michael Schrödl (Zoologische Staatssammlung München, Germany) and two anonymous reviewers for their helpful corrections and suggestions on the manuscript.

ADDITIONAL INFORMATION AND DECLARATIONS

Funding

The authors received no funding for this work.

Competing Interests

The authors declare that they have no competing interests.

Author Contributions

- Juan Francisco Araya conceived and designed the experiments, performed the experiments, analyzed the data, contributed reagents/materials/analysis tools, wrote the paper, prepared figures and/or tables, reviewed drafts of the paper.
- Ángel Valdés conceived and designed the experiments, performed the experiments, analyzed the data, contributed reagents/materials/analysis tools, wrote the paper, prepared figures and/or tables, reviewed drafts of the paper.

Data Deposition

The following information was supplied regarding data availability:

The research in this article did not generate nor collect any raw data/code.

New Species Registration

The following information was supplied regarding the registration of a newly described species:

Publication LSID: urn:lsid:zoobank.org:pub:088D994A-9E1E-4324-A6DF-FCCC2B0E3437.

Berthella schroedli sp. nov. LSID: urn:lsid:zoobank.org:act:9F1D698F-96FB-40B0-A972-3C1F6F15014C.

Supplemental Information

Supplemental information for this article can be found online at <http://dx.doi.org/10.7717/peerj.1963#supplemental-information>.

REFERENCES

- Abraham PS. 1877.** Revision of the anthobranchiate nudibranchiate Mollusca, with descriptions or notices of forty-one hitherto undescribed species. *Proceedings of the Zoological Society of London* **1877**:196–269.
- Álamo V, Valdivieso V. 1997.** *Lista sistemática de moluscos marinos del Perú*. Segunda edición, revisada y actualizada. Callao: Publicación Especial Instituto del Mar del Perú, 183 pp.
- Aldea C, Céspedes T, Rosenfeld S. 2011.** Opisthobranchs from Bernardo O’Higgins National Park (S. Chile). *Thalassas* **27**(2):37–48.
- Araya JF. 2013.** A new species of *Aeneator* Finlay, 1926 (Mollusca, Gastropoda, Buccinidae) from northern Chile, with comments on the genus and a key to the Chilean species. *ZooKeys* **257**:89–101 DOI [10.3897/zookeys.257.4446](https://doi.org/10.3897/zookeys.257.4446).
- Araya JF. 2015a.** Current status of the non-indigenous molluscs of Chile, with the first record of *Otala punctata* (Müller, 1774) (Gastropoda: Helicidae) in the country and new records for *Cornu aspersum* (Müller, 1774) and *Deroceras laeve* (Müller, 1774). *Journal of Natural History* **49**(29–30):1731–1761 DOI [10.1080/00222933.2015.1006703](https://doi.org/10.1080/00222933.2015.1006703).
- Araya JF. 2015b.** The Bulimulidae (Mollusca: Pulmonata) from the Región de Atacama, northern Chile. *PeerJ* **3**:e1383 DOI [10.7717/peerj.1383](https://doi.org/10.7717/peerj.1383).
- Araya JF. 2015c.** New records of deep-sea sea spiders (Chelicerata: Pycnogonyda) in the southeastern Pacific. *Marine Biodiversity* 1–5 DOI [10.1007/s12526-015-0416-7](https://doi.org/10.1007/s12526-015-0416-7).
- Araya JF, Aliaga JA. 2015.** The northernmost record of *Tytthosceros inca* Baeza, Véliz, Pardo, Lohrmann and Guisado 1997 (Platyhelminthes: Pseudocerotidae) in Chile. *Marine Biodiversity* 1–2 DOI [10.1007/s12526-015-0395-8](https://doi.org/10.1007/s12526-015-0395-8).
- Araya JF, Aliaga JA, Araya ME. 2015.** On the distribution of *Physalia physalis* (Hydrozoa: Physaliidae) in Chile. *Marine Biodiversity* 1–5 DOI [10.1007/s12526-015-0417-6](https://doi.org/10.1007/s12526-015-0417-6).
- Araya JF, Araya ME. 2015a.** The shallow-water chitons (Mollusca, Polyplacophora) of Caldera, Region of Atacama, northern Chile. *Zoosystematics and Evolution* **91**(1):45–58 DOI [10.3897/zse.91.8536](https://doi.org/10.3897/zse.91.8536).
- Araya JF, Araya ME. 2015b.** The southernmost record of the amphipod *Hyperia curticephala* (Crustacea: Amphipoda: Hyperiididae) in the Pacific Ocean. *Marine Biodiversity Records* **8**:e40 DOI [10.1017/S1755267215000184](https://doi.org/10.1017/S1755267215000184).
- Araya JF, Catalán R. 2014.** A review of the non-bulimulid terrestrial Mollusca from the Region of Atacama, northern Chile. *ZooKeys* **398**:33–51 DOI [10.3897/zookeys.398.4282](https://doi.org/10.3897/zookeys.398.4282).
- Araya JF, Reid DG. 2016.** A new species of *Echinolittorina* Habe, 1956 (Gastropoda: Littorinidae), from a Quaternary shallow water molluscan assemblage in northern Chile. *Palaeontologia Electronica* **19.1.8A**:1–8.
- Bergh LSR. 1867.** *Phidiana lynceus* og *Ismaila monstrosa*. *Videnskabelige Meddeleser fra Danske Naturhistorisk Forening* 97–130.
- Bergh LSR. 1898.** Die Opisthobranchier der Sammlung Plate. *Zoologische Jahrbücher, Supplement* **4**(3):481–582.
- Broderip WJ, Sowerby GB. 1832.** Description of new (. . .) Mollusca and Conchifera (. . .) part of the collection made by Mr. H. Cuming. *Proceedings of the Zoological Society of London* **1832**:25–33.

- Camacho-García Y, Pola M, Carmona L, Padula V, Villani G, Cervera L. 2014.** Diversity and distribution of the heterobranch sea slug fauna on the Caribbean of Costa Rica. *Cahiers de Biologie Marine* 55(1):109–127.
- Collado GA. 2015.** A new freshwater snail (Caenogastropoda: Cochliopidae) from the Atacama Desert, northern Chile. *Zootaxa* 3925(3):445–449
DOI 10.11646/zootaxa.3925.3.
- Dall WH. 1909.** Report on a collection of shells from Peru, with a summary of the littoral marine mollusks of the Peruvian zoological province. *Proceedings of the United States National Museum* 37(1704):147–294 DOI 10.5479/si.00963801.37-1704.147.
- Dayrat B. 2009.** Review of the current knowledge of the systematics of Onchidiidae (Mollusca: Gastropoda: Pulmonata) with a checklist of nominal species. *Zootaxa* 2068:1–26.
- d’Orbigny A. 1834–1847.** Voyage dans l’Amérique méridionale (le Brésil, la république orientale de l’Uruguay, la république Argentine, la Patagonie, la république du Chili, la république de Bolivie, la république du Pérou), exécuté pendant les années 1826, 1827, 1828, 1829, 1830, 1831, 1832, et 1833. Tome 5, Partie 3, Mollusques. Paris: P. Bertrand. 758 pp.
- d’Orbigny A. 1835–1843.** Voyage dans l’Amérique Méridionale. Paris: P. Bertrand. Mollusques dates of publication: pp. 1–48 [1835], pp. 49–184 [1836], pp. 185–376 [1837], pp. 377–408 [1840], pp. 409–488 [1841], pp. 489–758, pls 1–85 [1846].
- Fischer MA, Cervera JL. 2005a.** *Baptodoris peruviana* (D’Orbigny, 1837) comb. nov., an alternative taxonomic placement for *Doris peruviana* (Gastropoda: Nudibranchia: Doridoidea). *Journal of Conchology* 38:513–528.
- Fischer MA, Cervera JL. 2005b.** Checklist of the opisthobranchs (Mollusca: Gastropoda) from the Chilean coast deposited in the “Colección de Flora y Fauna Profesor Patricio Sánchez Reyes” from the “Pontificia Universidad Católica de Chile.” *Iberus* 23(2):165–181.
- Fischer MA, van de Velde G, Roubos EW. 2007.** Morphology, anatomy and histology of a new species of *Flabellina* Voigt, 1834 (Opisthobranchia: Aeolidioidea) from the Chilean coast. *Animal Biology* 57(4):363–391 DOI 10.1163/157075607782232116.
- Folmer O, Black M, Hoeh W, Lutz R, Vrijenhoek R. 1994.** DNA primers for amplification of mitochondrial cytochrome c oxidase subunit I from diverse metazoan invertebrates. *Molecular Marine Biology and Biotechnology* 3(5):294–299.
- Gay C. 1854.** *Atlas de la Historia Física y Política de Chile*. Paris: Imprenta de E. Thunot y Ca. Segundo Tomo.
- Gigoux EE. 1932.** Sobre algunos caracoles terrestres de Atacama. *Revista Chilena de Historia Natural* 36(1):20–25.
- Gigoux EE. 1934.** Los moluscos marinos de Atacama. *Revista Chilena de Historia Natural* 38:274–286.
- Gould AA. 1852.** *Mollusca & Shells, United States Exploring Expedition*, vol. 12. Boston: Gould & Lincoln. xv + 510 pp.
- Gray JE. 1850.** *Figures of Molluscous Animals, Selected from Various Authors, Etched for the Use of Students*, vol. 1–4. London: Longman, Brown, Green and Longmans.
- Guzmán N, Saá S, Ortlieb L. 1998.** Catálogo descriptivo de los moluscos litorales (Gastropoda y Pelecypoda) de la zona de Antofagasta, 23 S (Chile). *Estudios Oceanológicos* 17:17–86.
- Hermosillo A, Valdés A. 2008.** Two new species of opisthobranch mollusks from the tropical eastern Pacific. *Proceedings of the California Academy of Sciences* 59(13):521–532.
- Hupé H. 1854.** *Fauna Chilena: Moluscos, Historia física y política de Chile, 95 Zoología*, vol. 8. Paris: Gay. iii + 499 pp., 14 pls.

- Jensen KR. 2007.** Biogeography of the Sacoglossa (Mollusca, Opisthobranchia). *Bonner zoologische Beiträge* **55(3/4)**:255–281.
- Kearse M, Moir R, Wilson A, Stones-Havas S, Cheung M, Sturrock S, Buxton S, Cooper A, Markowitz S, Duran C, Thierer T, Ashton B, Mentjies P, Drummond A. 2012.** Geneious basic: an integrated and extendable desktop software platform for the organization and analysis of sequence data. *Bioinformatics* **28(12)**:1647–1649
DOI [10.1093/bioinformatics/bts199](https://doi.org/10.1093/bioinformatics/bts199).
- Labrín M, Guzmán G, Sielfeld W. 2015.** Pterópodos thecosomados en el Pacífico suroriental frente a Caldera, Chile (Mollusca, Opisthobranchiata: Euthecostomata y Pseudothecostomata). *Latin American Journal of Aquatic Research* **43(1)**:71–79
DOI [10.3856/vol43-issue1-fulltext-7](https://doi.org/10.3856/vol43-issue1-fulltext-7).
- Lesson RP. 1831.** Voyage autour du monde execute par ordre du roi sur la corvette de sa Majesté, La Coquille, pendant les années 1822, 1823, 1824 et 1825. *Zoologie* **2**:239–455.
- MacFarland FM. 1909.** The opisthobranchiate Mollusca of the Branner-Agassiz expedition to Brazil. *Letland Stanford Junior University Publications* **2**:1–104.
- MacFarland FM. 1966.** Studies of opisthobranch mollusks of the Pacific coast of North America. *Memoirs California Academy of Sciences* **6**:1–546.
- Marcus E. 1959.** Reports of the Lund University Chile Expedition 1948–1949, 36. Lamellariacea und Opisthobranchia. *Lunds Universitets Årsskrift (NF)* **55**:1–135.
- Marcus E, Marcus E. 1967.** *American opisthobranch mollusks*. Miami: Institute of Marine Sciences, 256 pp.
- Marincovich L. 1973.** Intertidal mollusks of Iquique, Chile. *Natural History Museum. Los Angeles County Science Bulletin* **16**:42–49.
- Martynov A, Schrödl M. 2011.** Phylogeny and evolution of corambid nudibranchs (Mollusca: Gastropoda). *Zoological Journal of the Linnean Society* **163(2)**:585–604
DOI [10.1111/zoj.2011.163.issue-2](https://doi.org/10.1111/zoj.2011.163.issue-2).
- Millen S, Schrödl M, Vargas N, Indacochea A. 1994.** A new species of *Okenia* (Nudipleura: Doridacea) from the Peruvian faunal province. *The Veliger* **37**:312–318.
- Miquel SE, Araya JF. 2013.** A new Charopidae from Chile and Argentina, *Stephacharopa calderaensis* n. gen. and n. sp., with remarks on the taxonomy of the genus *Stephadiscus* Hylton Scott 1981 (Mollusca: Gastropoda Pulmonata). *Archiv für Molluskenkunde* **142(2)**:227–235
DOI [10.1127/arch.moll/1869-0963/142/227-235](https://doi.org/10.1127/arch.moll/1869-0963/142/227-235).
- Muniain C, Valdés A, Ortea J. 1996.** Redescription of *Tyrinna nobilis* Bergh, 1898 (Opisthobranchia: Chromodorididae) from Patagonia, Argentina. *Journal of Molluscan Studies* **62(3)**:265–273
DOI [10.1093/mollus/62.3.265](https://doi.org/10.1093/mollus/62.3.265).
- Nakamura K. 2006.** New records of opisthobranch mollusks from the Guayaquil marine ecoregion: northern Perú. *The Festivus* **38**:75–83.
- Nakamura K. 2007.** Especies bentónicas de Opisthobranchia (Mollusca: Gastropoda) presents en el litoral del norte peruano. *Revista Peruana de Biología* **13(3)**:255–257
DOI [10.15381/rpb.v13i3.2352](https://doi.org/10.15381/rpb.v13i3.2352).
- Odhner NH. 1926.** Die Opisthobranchien. *Further Zoological Results of the Swedish Antarctic Expedition 1901–1903* **2**:1–100.
- Osorio C. 2012.** Nueva especie del género *Liotia* (Gastropoda: Trochoidea: Liotiidae) del Pacífico sur oriental, norte de Chile. *Revista de Biología Marina y Oceanografía* **47(3)**:407–411
DOI [10.4067/S0718-19572012000300004](https://doi.org/10.4067/S0718-19572012000300004).

- Padula V, Wirtz P, Schrödl M. 2014.** Heterobranch sea slugs (Mollusca: Gastropoda) from Ascension Island, South Atlantic Ocean. *Journal of the Marine Biological Association of the United Kingdom* 1–10 DOI [10.1017/S0025315414000575](https://doi.org/10.1017/S0025315414000575).
- Philippi RA. 1860.** *Viage [sic] al Desierto de Atacama, hecho de orden del Gobierno de Chile en el verano 1853–1854*. Halle: Sajonia, 254 pp.
- Pilsbry HA. 1896.** *Manual of Conchology Philadelphia* 16:175–226.
- Rehder HA. 1945.** The Chilean species of the molluscan genus *Peronaeus* (Bulimulidae). *Revista Chilena de Historia Natural* 48(1):102–107.
- Reiswig H, Araya JF. 2014.** A review of the Hexactinellida (Porifera) of Chile, with the first record of *Caulophacus* Schulze, 1885 (Lyssacinosa: Rossellidae) from the Southeastern Pacific Ocean. *Zootaxa* 3889(3):414–428 DOI [10.11646/zootaxa.3889.3.4](https://doi.org/10.11646/zootaxa.3889.3.4).
- Risso A. 1826.** *Histoire Naturelle des Principales Productions de l'Europe Méridionale et Particulièrement de Celles des Environs de Nice et des Alpes Maritimes Histoire Naturelle des Principales Productions de l'Europe Méridionale*. Paris: F.-G. Levrault. 4 [iii] + vii + 439 pp., 12 pls.
- Rosenfeld S, Aldea C. 2010.** *Onchidella marginata* (Couthouy en Gould, 1852): antecedentes de la especie. *Amici Molluscarum* 18:35–37.
- Schrödl M. 1996a.** Nudibranchia y Sacoglossa de Chile: Morfología exterior y distribución. *Gayana* 60:17–62.
- Schrödl M. 1996b.** *Janolus rebecca*, a new species of arminacean nudibranchs from northern Chile. *Spixiana* 19(3):293–300.
- Schrödl M. 1997.** Range extensions of Magellanic Nudibranchs (Opisthobranchia) into the Peruvian faunal province. *The Veliger* 40(1):38–42.
- Schrödl M. 1999.** The genus *Berthella* Blainville, 1825 (Notaspidea, Pleurobranchidae) from Magellanic waters. *Journal of Molluscan Studies* 65:399–409.
- Schrödl M. 2000a.** Revision of the nudibranch genus *Cadlina* (Gastropoda: Opisthobranchia) from the Southern Ocean. *Journal of the Marine Biological Association of the United Kingdom* 80(2):299–309 DOI [10.1017/S0025315499001873](https://doi.org/10.1017/S0025315499001873).
- Schrödl M. 2000b.** Taxonomic revision of the common South American nudibranch *Anisodoris fontaini* (d'Orbigny, 1837), with discussion of its systematic placement. *Journal of Molluscan Studies* 66(1):69–82 DOI [10.1093/mollus/66.1.69](https://doi.org/10.1093/mollus/66.1.69).
- Schrödl M. 2003.** *Sea Slugs of Southern South America*. Hackenheim: Conch Books, 165 pp.
- Schrödl M. 2009.** Opisthobranchia–sea slugs. In: Häussermann V, Försterra G, eds. *Fauna Marina Bentónica de la Patagonia Chilena*. Chile: Nature in Focus, 505–542.
- Schrödl M, Grau JH. 2006.** Nudibranchia from the remote southern Chilean Guambin and Ipún Islands (Chonos Archipelago, 44–45 °S), with redescription of Chilean *Rostanga pulchra* MacFarland, 1905. *Revista Chilena de Historia Natural* 79:3–12.
- Schrödl M, Hooker Y. 2014.** Sea slugs of Peru: Peruvian-Chilean faunal elements. *Spixiana* 37(1):45–59.
- Schrödl M, Millen SV. 2001.** Revision of the nudibranch gastropod genus *Tyrinna* Bergh, 1898 (Nudibranchia: Doridoidea). *Journal of Natural History* 35(8):1143–1171 DOI [10.1080/00222930152434472](https://doi.org/10.1080/00222930152434472).
- Schrödl M, Alarcón MA, Bedriñana LR, Bravo FJ, Bustamante CM, Carvalho R, Försterra G, Häussermann V, Salmen A. 2005.** Nudipleura (Gastropoda: Opisthobranchia) from the southern Chilean Comau Fjord, with redescription of *Polycera priva* Marcus, 1959. *Vita Malacologica* 3:23–33.

- Sowerby GB. 1832.** *The Conchological Illustrations or, Coloured Figures of all the Hitherto Unfigured Recent Shells.* London.
- Sowerby GB. 1833.** New species of shells collected by Mr. Cuming on the Western coast of South America and among the Islands of the South Pacific Ocean. They were accompanied by characters from the pen of Mr. G. B. Sowerby. *Proceedings of the Zoological Society of London* **1833**:34–38.
- Sowerby GB II. 1840.** Characters of new species of Mollusca and Conchifera, collected by Mr. Cumming. In: Broderip WJ, Sowerby GB I, eds. *Proceedings of the Malacological Society of London for 1832, 1833.* London: James Sowerby. Pp. 25–33, 50–61, 104–108, 124–126 [1832]; 173–179, 194–202 [1833].
- Uribe RA, Pacheco AS. 2012.** First record of *Spurilla neapolitana* (Mollusca: Nudibranchia: Aeolidiidae) on the central coast of Peru (Humboldt Current Upwelling Ecosystem). *Marine Biodiversity Records* **5**(3):e14 DOI [10.1017/S1755267211001138](https://doi.org/10.1017/S1755267211001138).
- Uribe RA, Nakamura K, Indacochea A, Pacheco AS, Hooker Y, Schrödl M. 2013.** A review on the diversity and distribution of opisthobranch gastropods from Peru, with the addition of three new records. *Spixiana* **36**(1):43–60.
- Uribe R, Rubio J, Carbajal P, Berrú P. 2014.** Invertebrados marinos bentónicos del litoral de la Región Áncash, Perú. *Boletín Instituto del Mar del Perú* **28**(1–2):136–293.
- Valdés A, Muniáin C. 2002.** Revision and taxonomic reassessment of Magellanic species assigned to *Anisodoris* Bergh, 1898 (Nudibranchia: Doridoidea). *Journal of Molluscan Studies* **68**(4):345–351 DOI [10.1093/mollus/68.4.345](https://doi.org/10.1093/mollus/68.4.345).
- Valdovinos C. 1999.** Biodiversidad de moluscos chilenos: Base de datos taxonómica y distribucional. *Gayana* **63**(2):111–164.