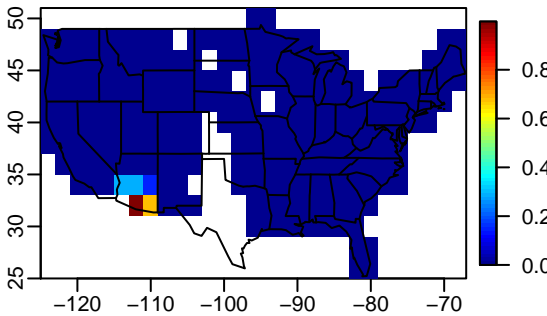
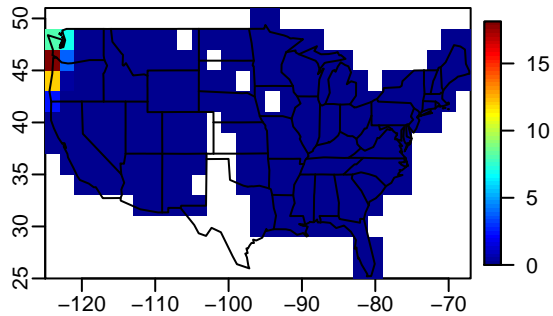


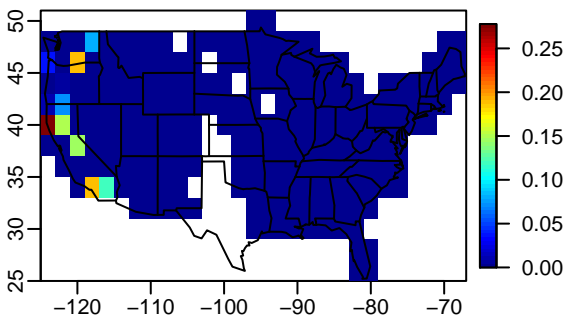
Acacia spp.



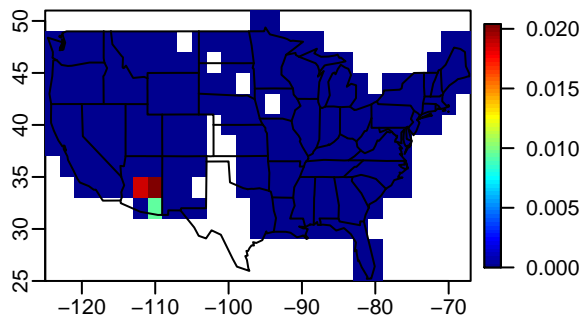
Alnus rubra



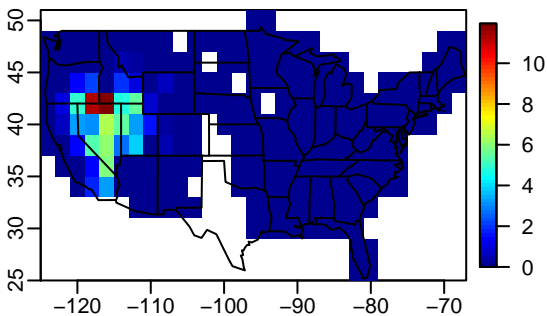
Alnus rhombifolia



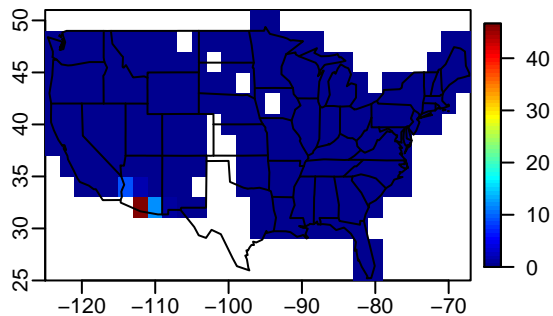
Alnus oblongifolia



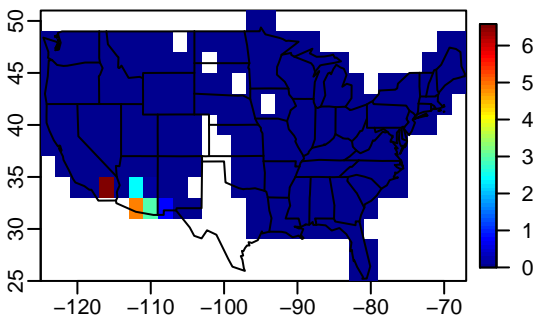
Cercocarpus ledifolius



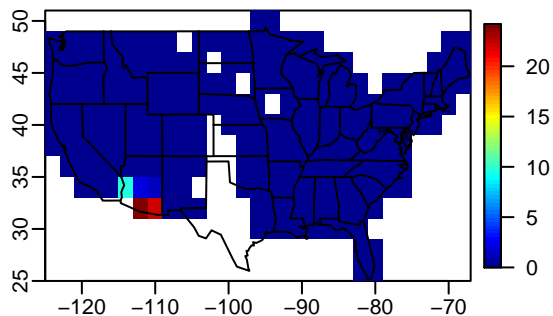
Prosopis spp.



Prosopis glandulosa var. torreyana



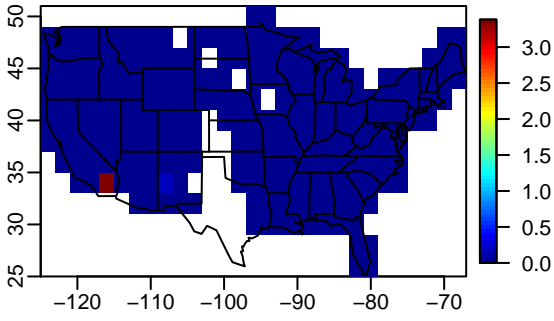
Prosopis velutina



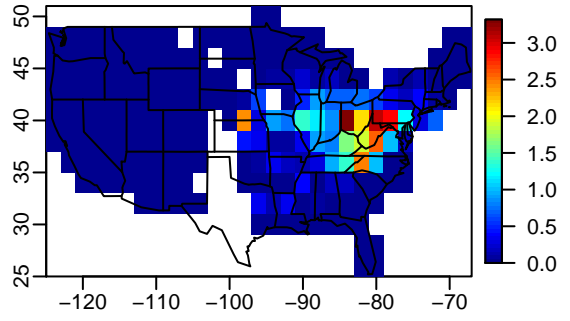
longitude

latitude

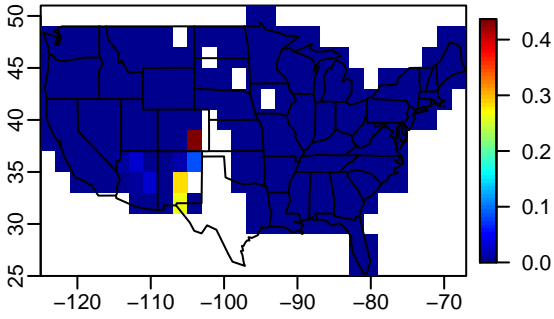
Prosopis pubescens



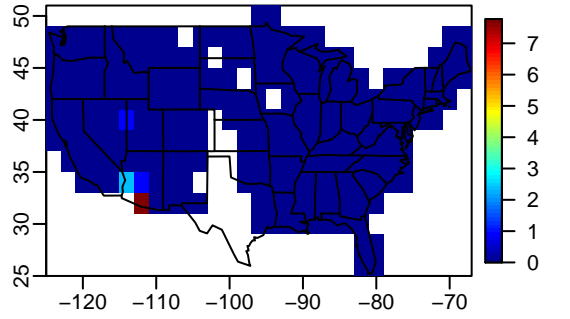
Robinia pseudoacacia



Robinia neomexicana

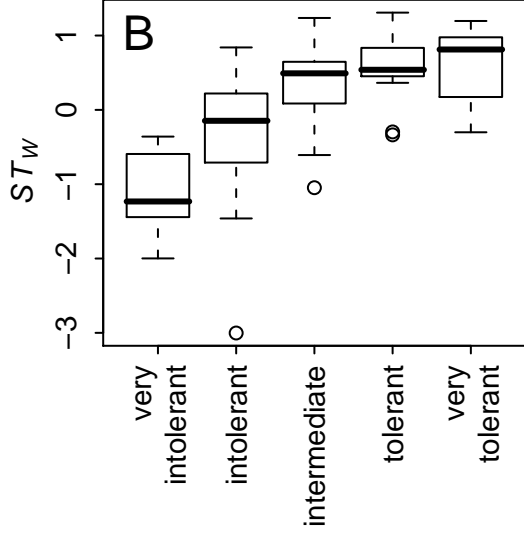
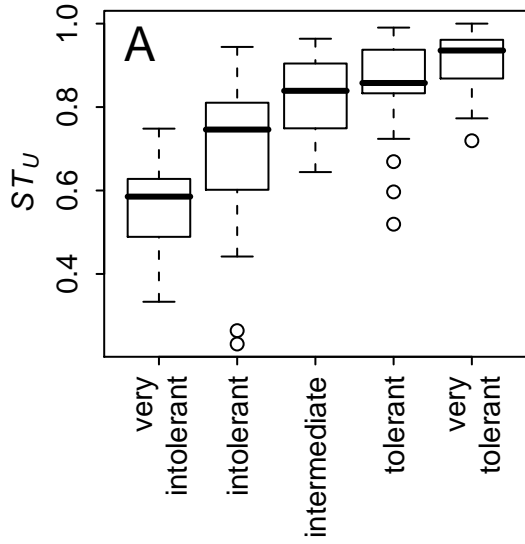


Olneya tesota

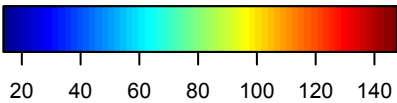
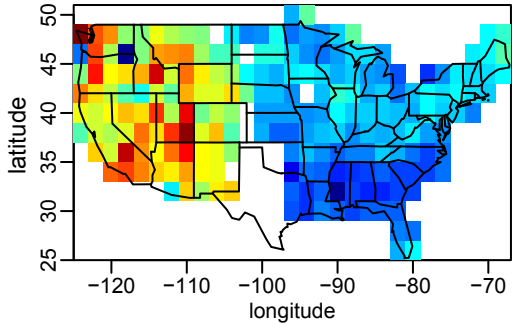


latitude

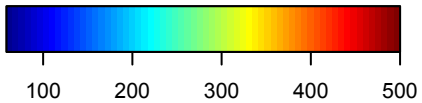
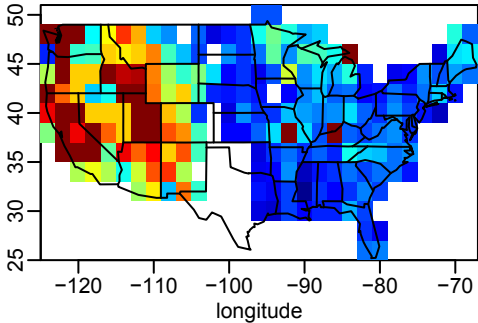
longitude



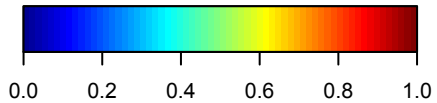
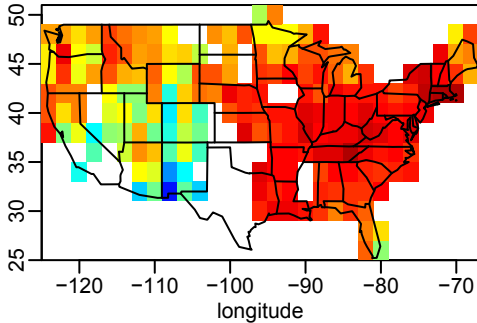
A mean stand age
(years)



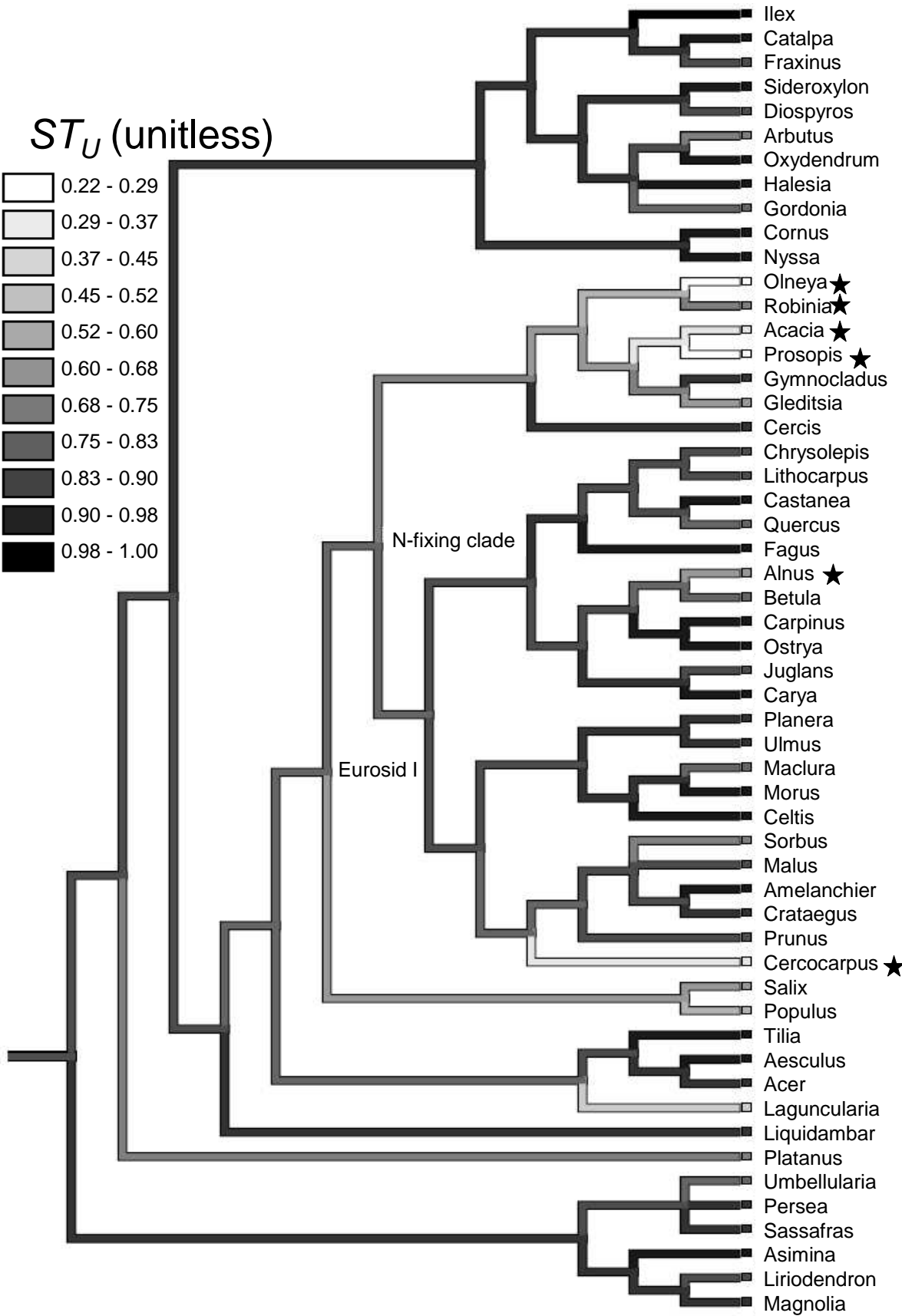
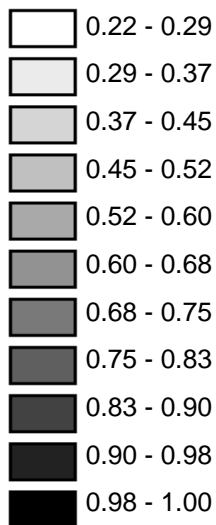
B maximum stand age
(years)



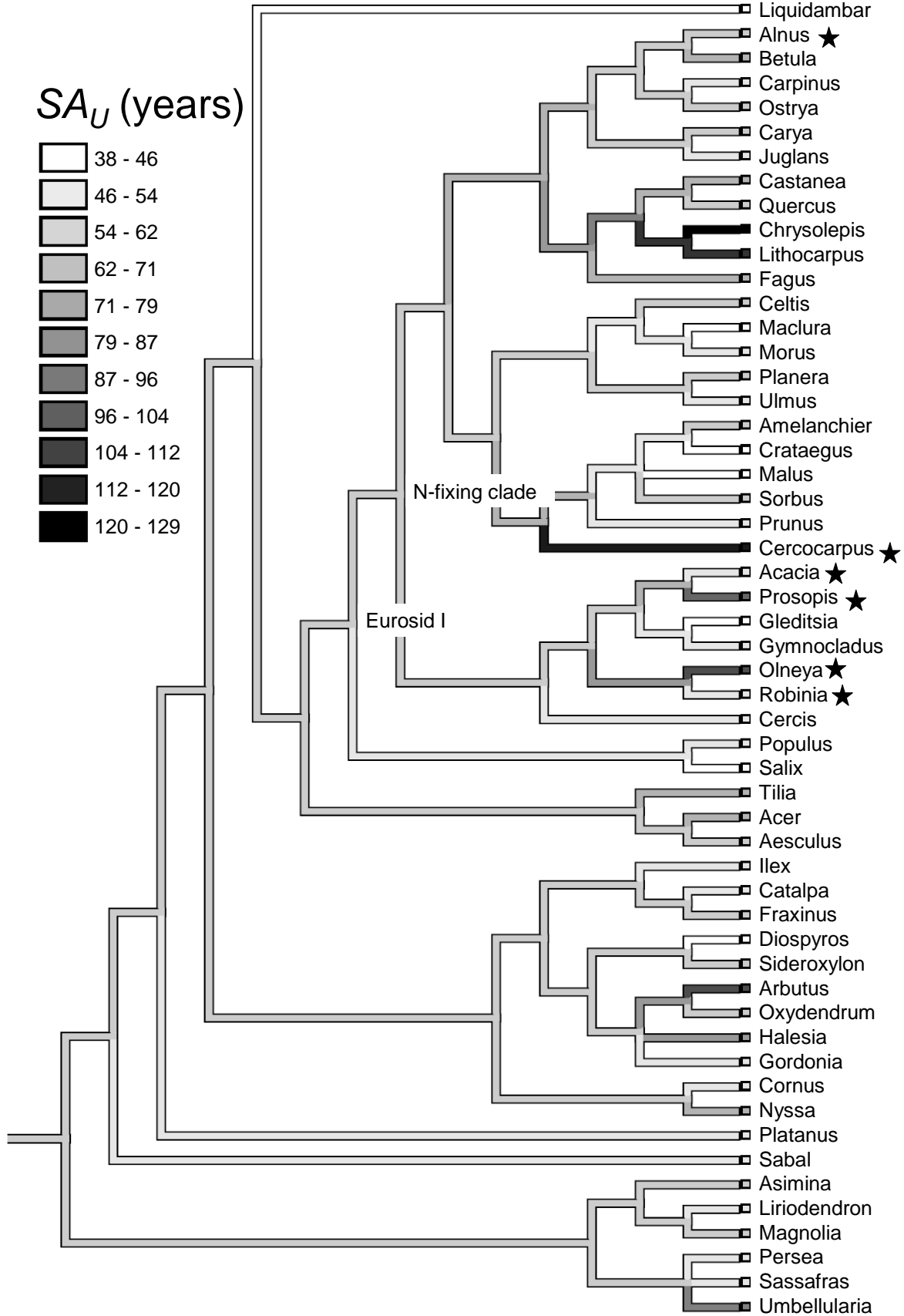
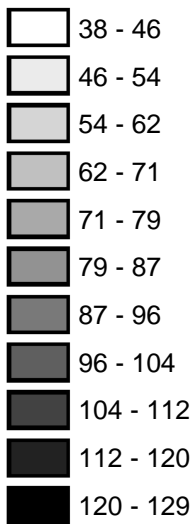
C proportion of saplings
in understory



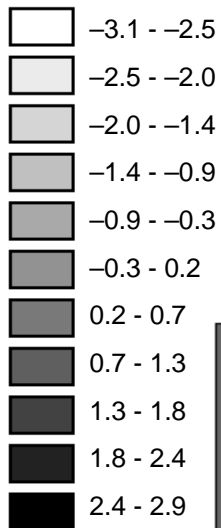
ST_U (unitless)



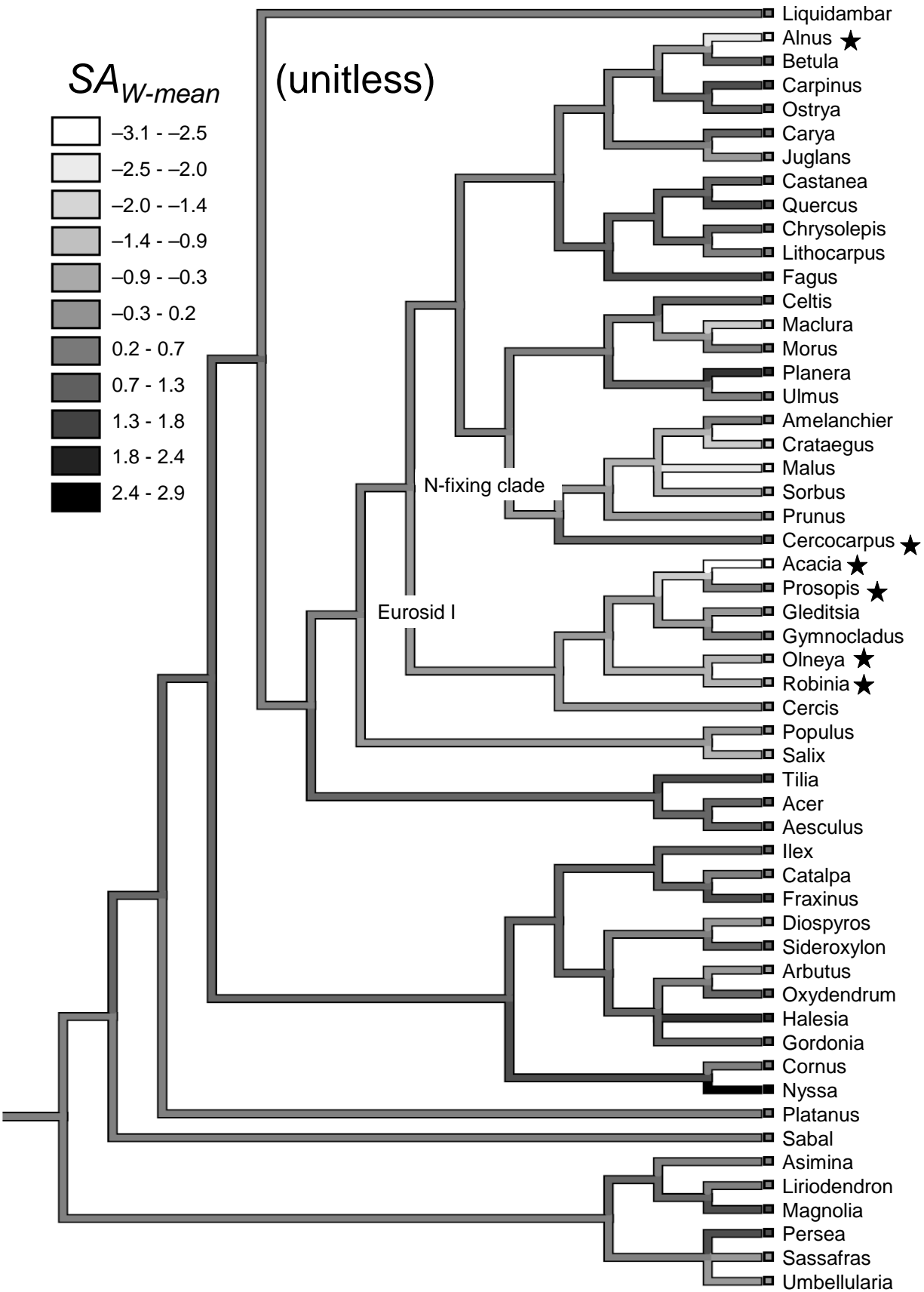
SA_U (years)

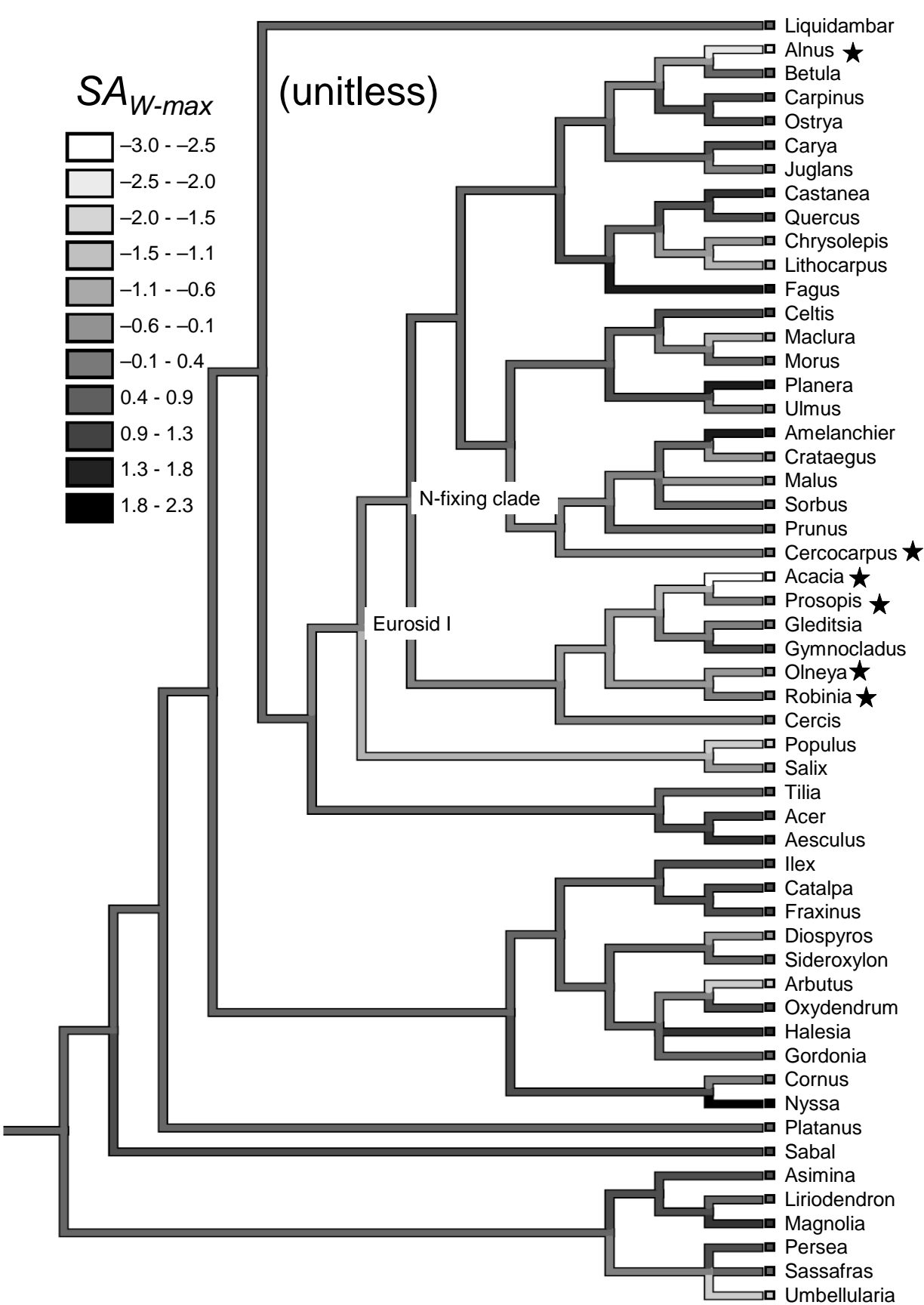


SA_{W-mean}



(unitless)

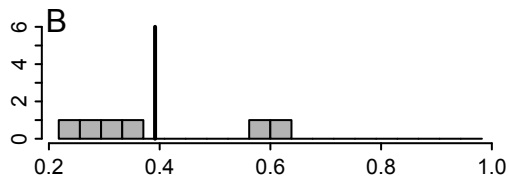
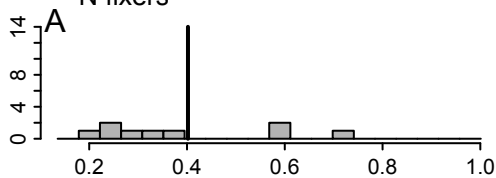




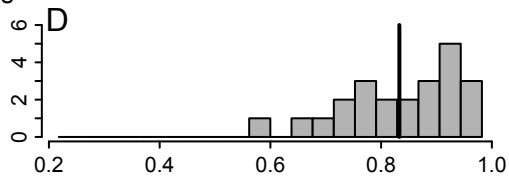
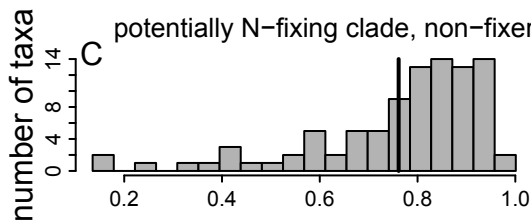
SPECIES

GENERA

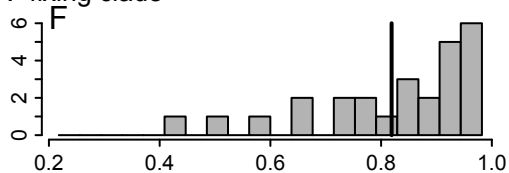
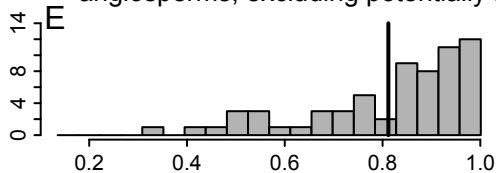
N fixers



potentially N-fixing clade, non-fixers



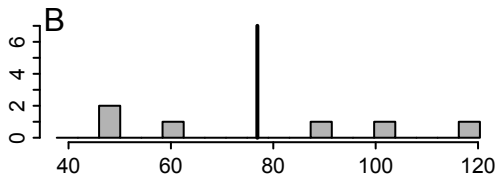
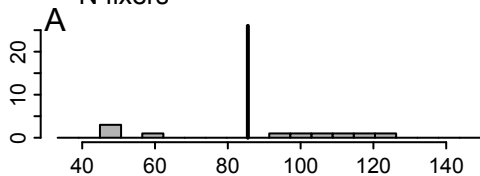
angiosperms, excluding potentially N-fixing clade


 ST_U : shade tolerance (unweighted)

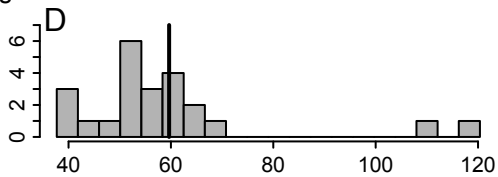
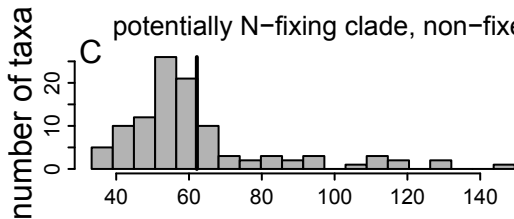
SPECIES

GENERA

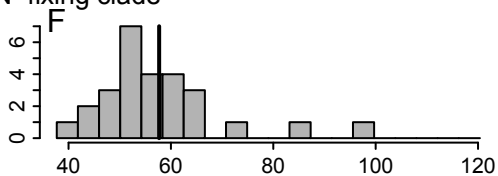
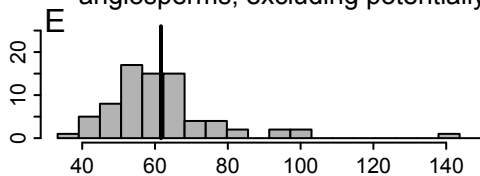
N fixers



potentially N-fixing clade, non-fixers



angiosperms, excluding potentially N-fixing clade



SA_U: mean age of stands in which taxon occurs (unweighted)

1 **Table S1.** Percent of regional N fixer basal comprised by each N-fixing species, calculated from
 2 FIA data

Genus	Species	EUS*	WUS*	WWAOR*	AZNM*
<i>Acacia</i>	spp.		0.38%		2.22%
<i>Alnus</i>	<i>oblongifolia</i>		0.17%		1.01%
<i>Alnus</i>	<i>rhombofolia</i>		0.77%	0.10%	
<i>Alnus</i>	<i>rubra</i>		36.80%	99.89%	
<i>Cercocarpus</i>	<i>ledifolius</i>		45.12%	0.01%	<0.01%
<i>Olneya</i>	<i>tesota</i>		0.52%		2.31%
<i>Prosopis</i>	<i>glandulosa</i> var. <i>torreyana</i>		1.74%		10.11%
<i>Prosopis</i>	<i>pubescens</i>		0.03%		0.15%
<i>Prosopis</i>	spp.		7.21%		41.97%
<i>Prosopis</i>	<i>velutina</i>		6.86%		39.94%
<i>Robinia</i>	<i>neomexicana</i>		0.39%		2.30%
<i>Robinia</i>	<i>pseudoacacia</i>	100.00%	<0.01%		
% Basal area occupied by N fixers [†]		0.482%	1.323%	4.322%	1.401%
Mean total basal area of N fixers (m ² ha ⁻¹)		0.106	0.289	2.202	0.200

3 * EUS: Eastern U. S. (east of 100° W longitude); WUS: Western U. S.; WWAOR: Western
 4 Washington and Oregon (all counties west of the crest of the Cascade Mountains); AZNM:
 5 Arizona and New Mexico.

6 [†] Species present in the FIA documentation with zero basal area in current surveys are not
 7 included in this table. Some species are included here but not in Table A2, which only includes
 8 species represented by ≥ 20 individuals.

1 **Table S2:** Summary of FIA angiosperm data

Species	Family	N fixer[*]	# ST[*]	ST_U[*]	ST_W[*]	# SA[*]	SA_U[*]	SA_{W-mean}[*]	SA_{W-max}[*]
<i>Acacia</i> spp.	Fabaceae	1	41	0.317	-0.71	57	46	-2.58	-2.31
<i>Alnus rhombifolia</i>	Betulaceae	1	18			139	93	-0.49	-1.03
<i>Alnus rubra</i>	Betulaceae	1	113	0.602	-0.90	2795	58	-1.92	-1.75
<i>Cercocarpus ledifolius</i>	Rosaceae	1	396	0.369	-1.96	8059	118	0.07	-0.42
<i>Olneya tesota</i>	Fabaceae	1	32	0.219	-2.25	124	100	-0.90	-0.82
<i>Prosopis glandulosa</i> var. <i>torreyana</i>	Fabaceae	1	54	0.278	-1.39	352	108	0.52	0.38
<i>Prosopis</i> spp.	Fabaceae	1	371	0.264	-1.20	986	47	-2.14	-2.18
<i>Prosopis velutina</i>	Fabaceae	1	132	0.258	-1.92	1024	123	1.23	0.88
<i>Robinia neomexicana</i>	Fabaceae	1	280	0.711	1.37	899	114	0.05	0.17
<i>Robinia pseudoacacia</i>	Fabaceae	1	1389	0.601	-1.49	14936	48	-0.93	-0.40
<i>Acer barbatum</i>	Sapindaceae	0	1033	0.963	0.92	2604	52	0.66	0.75
<i>Acer glabrum</i>	Sapindaceae	0	841	0.765	0.25	2201	79	-0.01	-1.24
<i>Acer grandidentatum</i>	Sapindaceae	0	691	0.588	1.05	3394	63	-1.54	-2.41
<i>Acer leucoderme</i>	Sapindaceae	0	11			54	44	0.05	-0.33
<i>Acer macrophyllum</i>	Sapindaceae	0	114	0.719	0.00	1783	92	-0.87	-1.31
<i>Acer negundo</i>	Sapindaceae	0	3959	0.839	0.36	16945	52	-0.36	-0.30
<i>Acer nigrum</i>	Sapindaceae	0	79	1.000	0.86	365	65	0.38	1.27
<i>Acer pensylvanicum</i>	Sapindaceae	0	3537	0.877	0.61	7539	69	0.11	0.98
<i>Acer rubrum</i>	Sapindaceae	0	94437	0.858	0.53	426395	60	0.23	0.26
<i>Acer saccharinum</i>	Sapindaceae	0	1630	0.829	0.18	14966	60	0.16	0.14
<i>Acer saccharum</i>	Sapindaceae	0	48246	0.933	1.20	269935	70	0.66	0.29
<i>Acer spicatum</i>	Sapindaceae	0	5046	0.923	2.03	6829	68	0.37	0.06
<i>Acer</i> spp.	Sapindaceae	0	10			29	48	-1.72	-1.00
<i>Aesculus californica</i>	Sapindaceae	0	73	0.329	-2.24	259	72	-1.66	-2.18
<i>Aesculus flava</i>	Sapindaceae	0	152	0.980	0.68	1482	62	0.30	1.00
<i>Aesculus glabra</i>	Sapindaceae	0	419	0.990	0.88	1042	58	-0.18	-0.04
<i>Aesculus</i> spp.	Sapindaceae	0	196	0.969	0.86	1002	63	0.24	1.08
<i>Amelanchier arborea</i>	Rosaceae	0	18			29	53	-0.58	-0.21
<i>Amelanchier</i> spp.	Rosaceae	0	1918	0.947	0.87	5383	62	0.01	0.95
<i>Arbutus menziesii</i>	Ericaceae	0	163	0.644	-0.61	2480	98	-0.57	-1.35

Menge et al.: Phylogenetic N fixation

<i>Asimina triloba</i>	Annonaceae	0	752	0.964	0.70	1195	58	-0.11	0.32
<i>Betula alleghaniensis</i>	Betulaceae	0	5783	0.829	0.49	49164	76	0.89	0.75
<i>Betula lenta</i>	Betulaceae	0	1945	0.806	-0.20	21106	67	0.19	1.49
<i>Betula nigra</i>	Betulaceae	0	415	0.682	-0.90	3699	49	-0.18	-0.10
<i>Betula papyrifera</i>	Betulaceae	0	19882	0.649	-0.17	118212	58	-0.03	-0.75
<i>Betula populifolia</i>	Betulaceae	0	795	0.426	-2.30	3582	46	-1.48	-0.41
<i>Betula</i> spp.	Betulaceae	0	1066	0.815	-0.18	4364	61	0.64	0.44
<i>Carpinus caroliniana</i>	Betulaceae	0	13321	0.959	1.03	26967	53	0.49	0.44
<i>Carya alba</i>	Juglandaceae	0	4659	0.908	0.42	25186	58	0.39	0.52
<i>Carya aquatica</i>	Juglandaceae	0	151	0.868	0.28	1161	59	1.47	1.64
<i>Carya cordiformis</i>	Juglandaceae	0	2586	0.872	0.38	12481	59	0.01	0.25
<i>Carya glabra</i>	Juglandaceae	0	4794	0.931	0.53	27010	63	0.64	0.69
<i>Carya illinoensis</i>	Juglandaceae	0	135	0.689	-0.71	1184	48	-0.08	0.08
<i>Carya laciniosa</i>	Juglandaceae	0	114	0.868	0.17	1148	62	0.46	0.48
<i>Carya myristiciformis</i>	Juglandaceae	0	1			22	51	1.17	2.37
<i>Carya ovata</i>	Juglandaceae	0	3757	0.908	0.51	23316	63	0.38	0.47
<i>Carya pallida</i>	Juglandaceae	0	43	0.767	-0.28	262	54	0.48	0.54
<i>Carya</i> spp.	Juglandaceae	0	6699	0.926	0.59	32951	57	0.44	0.57
<i>Carya texana</i>	Juglandaceae	0	4010	0.903	0.41	12244	57	0.02	-0.17
<i>Castanea dentata</i>	Fagaceae	0	337	0.902	0.23	627	66	0.32	0.86
<i>Castanea pumila</i>	Fagaceae	0	11			25	36	-1.04	-0.97
<i>Catalpa bignonioides</i>	Bignoniaceae	0	7			41	40	-0.37	-0.07
<i>Catalpa speciosa</i>	Bignoniaceae	0	40	0.975	0.72	168	55	-0.15	0.50
<i>Catalpa</i> spp.	Bignoniaceae	0	3			84	55	-0.13	0.97
<i>Celtis laevigata</i>	Cannabaceae	0	598	0.923	0.54	4476	51	0.52	0.94
<i>Celtis occidentalis</i>	Cannabaceae	0	3809	0.928	0.68	15689	54	-0.05	0.25
<i>Celtis</i> spp.	Cannabaceae	0	417	0.945	0.90	1450	61	1.89	1.17
<i>Cercis canadensis</i>	Fabaceae	0	4749	0.903	0.40	8766	48	-0.68	-0.44
<i>Chrysolepis chrysophylla</i> var. <i>chrysophylla</i>	Fagaceae	0	103	0.796	0.22	653	120	0.29	-0.79
<i>Cornus florida</i>	Cornaceae	0	33081	0.965	0.77	56211	49	-0.27	-0.32
<i>Cornus nuttallii</i>	Cornaceae	0	92	0.880	1.38	190	143	1.19	-0.11
<i>Crataegus crus-galli</i>	Rosaceae	0	47	1.000	1.25	98	52	-0.35	-0.40
<i>Crataegus mollis</i>	Rosaceae	0	20	0.850	0.26	55	43	-1.30	-0.82

Menge et al.: Phylogenetic N fixation

<i>Crataegus</i> spp.	Rosaceae	0	4182	0.832	0.21	8296	40	-1.49	-0.70
<i>Diospyros virginiana</i>	Ebenaceae	0	4004	0.773	-0.30	9227	41	-0.79	-0.83
<i>Fagus grandifolia</i>	Fagaceae	0	10200	0.954	0.95	69612	70	0.68	1.24
<i>Fraxinus americana</i>	Oleaceae	0	7873	0.838	0.22	55404	60	-0.02	0.41
<i>Fraxinus caroliniana</i>	Oleaceae	0	68	0.882	0.75	201	55	0.78	1.13
<i>Fraxinus latifolia</i>	Oleaceae	0	6			70	65	-1.60	-1.66
<i>Fraxinus nigra</i>	Oleaceae	0	23166	0.772	0.75	71161	66	0.80	-0.36
<i>Fraxinus pennsylvanica</i>	Oleaceae	0	9913	0.820	0.46	42163	56	0.21	0.16
<i>Fraxinus profunda</i>	Oleaceae	0	76	0.908	0.66	380	74	3.16	2.16
<i>Fraxinus quadrangulata</i>	Oleaceae	0	127	0.866	0.07	568	56	-0.11	0.06
<i>Fraxinus</i> spp.	Oleaceae	0	8029	0.932	0.93	17799	63	1.66	1.27
<i>Gleditsia aquatica</i>	Fabaceae	0	15			139	55	0.71	0.74
<i>Gleditsia triacanthos</i>	Fabaceae	0	1020	0.582	-1.46	5902	46	-0.83	-0.51
<i>Gordonia lasianthus</i>	Theaceae	0	3063	0.724	-0.30	7357	48	0.17	0.09
<i>Gymnocladus dioicus</i>	Fabaceae	0	107	0.850	0.30	525	54	-0.07	0.26
<i>Halesia</i> spp.	Styracaceae	0	200	0.950	0.45	682	75	1.29	0.65
<i>Ilex opaca</i>	Aquifoliaceae	0	7776	0.981	0.98	16530	51	0.48	0.41
<i>Juglans cinerea</i>	Juglandaceae	0	138	0.739	-0.37	1832	57	-0.22	-0.24
<i>Juglans hindsii</i>	Juglandaceae	0	1			59	80	-0.79	0.21
<i>Juglans major</i>	Juglandaceae	0	0			21	95	-0.75	-0.46
<i>Juglans nigra</i>	Juglandaceae	0	1544	0.760	-0.38	17150	52	-0.45	-0.16
<i>Juglans</i> spp.	Juglandaceae	0	2			79	84	-1.13	-1.04
<i>Laguncularia racemosa</i>	Combretaceae	0	28	0.429	-1.69	0			
<i>Liquidambar styraciflua</i>	Altingiaceae	0	34761	0.840	0.17	145699	45	0.04	-0.15
<i>Liriodendron tulipifera</i>	Magnoliaceae	0	9616	0.778	-0.36	94193	52	-0.11	0.02
<i>Lithocarpus densiflorus</i>	Fagaceae	0	758	0.826	0.49	5419	111	-0.09	-1.04
<i>Maclura pomifera</i>	Moraceae	0	1379	0.740	-0.44	6017	40	-1.28	-0.90
<i>Magnolia acuminata</i>	Magnoliaceae	0	276	0.964	0.63	3177	63	0.14	1.15
<i>Magnolia fraseri</i>	Magnoliaceae	0	124	0.911	0.26	1002	67	0.61	0.46
<i>Magnolia grandiflora</i>	Magnoliaceae	0	667	0.958	1.01	2340	58	1.18	1.07
<i>Magnolia macrophylla</i>	Magnoliaceae	0	118	0.924	0.56	431	57	1.24	1.41
<i>Magnolia</i> spp.	Magnoliaceae	0	14			471	60	-0.28	1.01
<i>Magnolia virginiana</i>	Magnoliaceae	0	9758	0.841	0.37	23600	53	0.86	0.72

Menge et al.: Phylogenetic N fixation

<i>Malus fusca</i>	Rosaceae	0	22	0.136	-4.07	33	51	-2.91	-2.67
<i>Malus</i> spp.	Rosaceae	0	793	0.784	-0.12	4263	38	-1.79	-0.85
<i>Morus rubra</i>	Moraceae	0	1377	0.914	0.55	4250	51	-0.28	0.00
<i>Morus</i> spp.	Moraceae	0	250	0.940	0.78	639	52	0.59	0.34
<i>Nyssa aquatica</i>	Nyssaceae	0	1424	0.929	0.84	16696	76	3.49	2.53
<i>Nyssa biflora</i>	Nyssaceae	0	19581	0.867	0.56	73641	61	1.82	1.14
<i>Nyssa ogeche</i>	Nyssaceae	0	367	0.883	0.70	1392	64	2.22	1.61
<i>Nyssa sylvatica</i>	Nyssaceae	0	15339	0.956	0.67	46383	57	0.36	0.66
<i>Ostrya virginiana</i>	Betulaceae	0	16910	0.925	1.06	35515	62	0.31	0.28
<i>Oxydendrum arboretum</i>	Ericaceae	0	11148	0.952	0.64	34025	56	0.32	0.27
<i>Persea borbonia</i>	Lauraceae	0	5777	0.854	0.43	9925	51	0.59	0.22
<i>Planera aquatica</i>	Ulmaceae	0	167	0.886	0.48	701	58	1.32	1.22
<i>Platanus occidentalis</i>	Platanaceae	0	715	0.662	-1.05	9923	53	-0.08	-0.06
<i>Populus angustifolia</i>	Salicaceae	0	27	0.481	0.54	507	94	-0.63	-0.78
<i>Populus balsamifera</i>	Salicaceae	0	8496	0.487	-1.20	36499	50	-0.51	-1.52
<i>Populus balsamifera</i> sub. <i>trichocarpa</i>	Salicaceae	0	50	0.660	-0.54	595	75	-1.68	-1.78
<i>Populus deltoides</i>	Salicaceae	0	464	0.567	-1.44	6381	53	-0.45	0.13
<i>Populus deltoides</i> sub. <i>monilifera</i>	Salicaceae	0	7			329	85	-0.61	0.03
<i>Populus fremontii</i>	Salicaceae	0	1			149	102	-0.65	-0.87
<i>Populus grandidentata</i>	Salicaceae	0	10345	0.529	-1.30	59850	54	-0.28	-0.83
<i>Populus heterophylla</i>	Salicaceae	0	12			186	60	1.59	0.68
<i>Populus</i> spp.	Salicaceae	0	90	0.733	-0.36	589	63	1.33	0.68
<i>Populus tremuloides</i>	Salicaceae	0	81317	0.490	-1.27	338717	52	-0.80	-1.48
<i>Prunus americana</i>	Rosaceae	0	486	0.844	0.23	642	44	-1.27	-1.21
<i>Prunus emarginata</i>	Rosaceae	0	33	0.333	-2.78	100	53	-1.46	-2.28
<i>Prunus pennsylvanica</i>	Rosaceae	0	1899	0.603	-0.82	4267	42	-1.63	-1.09
<i>Prunus serotina</i>	Rosaceae	0	16061	0.788	0.00	76109	52	-0.59	0.02
<i>Prunus</i> spp.	Rosaceae	0	170	0.859	0.82	690	50	-0.33	-0.08
<i>Prunus virginiana</i>	Rosaceae	0	2218	0.851	1.09	3329	45	-1.13	-1.21
<i>Quercus agrifolia</i>	Fagaceae	0	21	0.571	0.37	606	110	0.03	-0.79
<i>Quercus alba</i>	Fagaceae	0	15612	0.893	0.41	159654	66	0.82	0.73
<i>Quercus arizonica</i>	Fagaceae	0	1203	0.482	-0.49	7393	118	0.10	0.11
<i>Quercus bicolor</i>	Fagaceae	0	206	0.893	0.69	2686	64	0.48	0.86

Menge et al.: Phylogenetic N fixation

<i>Quercus buckleyi</i>	Fagaceae	0	75	0.840	0.07	573	57	1.02	1.33
<i>Quercus chrysolepis</i>	Fagaceae	0	915	0.597	-0.34	7410	106	-0.17	-1.05
<i>Quercus coccinea</i>	Fagaceae	0	2598	0.748	-0.59	34831	61	0.39	0.57
<i>Quercus douglasii</i>	Fagaceae	0	56	0.232	-3.00	1136	82	-1.00	-1.94
<i>Quercus ellipsoidalis</i>	Fagaceae	0	1083	0.763	0.22	10756	57	-0.09	-0.43
<i>Quercus emoryi</i>	Fagaceae	0	344	0.669	1.19	2718	127	0.68	0.72
<i>Quercus</i> spp. (evergreen)	Fagaceae	0	669	0.167	-3.16	4769	93	-0.89	-0.86
<i>Quercus falcata</i>	Fagaceae	0	4180	0.798	-0.15	28706	48	0.13	0.13
<i>Quercus gambelii</i>	Fagaceae	0	18337	0.402	-0.92	37860	90	-0.96	-1.14
<i>Quercus garryana</i>	Fagaceae	0	143	0.455	-1.40	1698	81	-1.30	-1.62
<i>Quercus hypoleucoides</i>	Fagaceae	0	498	0.357	-1.22	1358	126	0.54	0.83
<i>Quercus ilicifolia</i>	Fagaceae	0	87	0.713	-0.72	219	51	-0.86	0.54
<i>Quercus imbricaria</i>	Fagaceae	0	830	0.764	-0.45	3722	49	-0.81	-0.76
<i>Quercus incana</i>	Fagaceae	0	1511	0.708	-0.47	2550	38	-0.58	-0.66
<i>Quercus kelloggii</i>	Fagaceae	0	261	0.548	-0.75	4390	88	-0.75	-1.67
<i>Quercus laevis</i>	Fagaceae	0	4976	0.565	-1.37	8585	41	-0.41	-0.42
<i>Quercus laurifolia</i>	Fagaceae	0	7364	0.838	0.40	30124	52	0.96	0.57
<i>Quercus lobata</i>	Fagaceae	0	2			141	111	0.48	-1.05
<i>Quercus lyrata</i>	Fagaceae	0	283	0.905	0.62	3048	64	2.07	1.78
<i>Quercus macrocarpa</i>	Fagaceae	0	4179	0.837	1.24	30613	64	0.50	0.16
<i>Quercus margarettiae</i>	Fagaceae	0	258	0.744	-0.30	710	37	-0.55	-0.76
<i>Quercus marilandica</i>	Fagaceae	0	3511	0.756	-0.40	10154	47	-0.37	-0.73
<i>Quercus michauxii</i>	Fagaceae	0	501	0.944	0.84	3278	57	1.32	0.91
<i>Quercus minima</i>	Fagaceae	0	47	0.596	-1.01	271	41	-0.73	-0.17
<i>Quercus muehlenbergii</i>	Fagaceae	0	1203	0.847	0.12	9195	62	0.42	0.25
<i>Quercus nigra</i>	Fagaceae	0	14701	0.785	-0.09	55187	41	-0.15	-0.27
<i>Quercus oblongifolia</i>	Fagaceae	0	9			237	150	3.48	2.17
<i>Quercus pagoda</i>	Fagaceae	0	327	0.810	-0.07	4017	52	0.77	0.84
<i>Quercus palustris</i>	Fagaceae	0	301	0.764	-0.34	3585	54	-0.25	0.08
<i>Quercus phellos</i>	Fagaceae	0	1779	0.797	-0.11	10398	49	0.49	0.32
<i>Quercus prinus</i>	Fagaceae	0	3271	0.846	-0.05	66656	71	0.93	1.53
<i>Quercus rubra</i>	Fagaceae	0	8801	0.809	0.34	130123	68	0.69	0.62
<i>Quercus rugosa</i>	Fagaceae	0	32	0.688	2.24	79	93	-0.88	-0.63

Menge et al.: Phylogenetic N fixation

<i>Quercus shumardii</i>	Fagaceae	0	85	0.788	-0.21	1188	55	0.56	0.50
<i>Quercus similis</i>	Fagaceae	0	1			26	43	-0.77	-0.13
<i>Quercus sinuata</i> var. <i>sinuata</i>	Fagaceae	0	5			54	51	1.09	1.10
<i>Quercus</i> spp.	Fagaceae	0	2966	0.615	-0.91	4364	39	-0.79	-0.62
<i>Quercus stellata</i>	Fagaceae	0	7744	0.801	-0.15	49035	56	0.33	-0.04
<i>Quercus velutina</i>	Fagaceae	0	9264	0.797	-0.18	79928	62	0.32	0.31
<i>Quercus virginiana</i>	Fagaceae	0	2104	0.713	-0.19	9339	56	0.92	1.05
<i>Quercus wislizeni</i>	Fagaceae	0	362	0.425	-1.53	1366	73	-1.53	-2.05
<i>Sabal palmetto</i>	Arecaceae	0	5			1055	49	-0.25	0.49
<i>Salix amygdaloides</i>	Salicaceae	0	251	0.789	0.90	539	48	-0.87	-0.97
<i>Salix bebbiana</i>	Salicaceae	0	209	0.656	-0.59	267	40	-1.52	-2.01
<i>Salix nigra</i>	Salicaceae	0	880	0.486	-2.00	5982	47	-0.81	-0.36
<i>Salix</i> spp.	Salicaceae	0	908	0.564	-1.22	3451	37	-1.11	-1.08
<i>Sassafras albidum</i>	Lauraceae	0	8393	0.878	0.22	26347	52	-0.53	-0.08
<i>Sideroxylon lanuginosum</i> sub. <i>lanuginosum</i>	Sapotaceae	0	134	0.948	0.70	244	57	0.40	0.16
<i>Sorbus americana</i>	Rosaceae	0	257	0.665	-0.50	655	56	-0.86	-0.12
<i>Tilia americana</i>	Malvaceae	0	6822	0.906	1.31	62070	65	0.48	-0.11
<i>Tilia americana</i> var. <i>caroliniana</i>	Malvaceae	0	6			79	65	2.24	2.39
<i>Tilia americana</i> var. <i>heterophylla</i>	Malvaceae	0	36	0.972	0.83	296	66	1.32	1.36
<i>Tilia</i> spp.	Malvaceae	0	237	0.954	0.65	1313	67	0.70	1.04
<i>Ulmus alata</i>	Ulmaceae	0	4441	0.918	0.48	14653	47	-0.10	0.29
<i>Ulmus americana</i>	Ulmaceae	0	19177	0.889	0.70	67472	54	-0.26	-0.41
<i>Ulmus crassifolia</i>	Ulmaceae	0	51	0.922	0.53	455	58	1.34	2.01
<i>Ulmus rubra</i>	Ulmaceae	0	5643	0.907	0.49	17958	57	-0.11	0.16
<i>Ulmus serotina</i>	Ulmaceae	0	13			71	33	-0.88	-0.63
<i>Ulmus</i> spp.	Ulmaceae	0	3539	0.930	0.77	9526	52	0.65	0.28
<i>Ulmus thomasii</i>	Ulmaceae	0	425	0.918	0.92	1016	58	-0.03	-0.44
<i>Umbellularia californica</i>	Lauraceae	0	207	0.749	1.04	956	84	-0.81	-1.49

- 1 * 'N fixer' indicates whether a species is an N fixer (1) or not (0), '# ST' is the number of FIA individuals available for calculating ST
- 2 indices (live saplings with reported crown class), 'ST_U' is the unweighted shade tolerance index (proportion of saplings in understory;
- 3 unitless), 'ST_W' is the geographically weighted shade tolerance index, '# SA' is the number of FIA individuals available for calculating

Menge et al.: Phylogenetic N fixation

1 SA indices (live saplings + trees in plots with reported stand age), 'SA_U' is the geographically-unweighted, basal area-weighted mean
2 stand age in which the species occurs, and 'SA_{W-mean}' and 'SA_{W-max}' are geographically weighted stand age indices (see Methods for
3 details). All weighted indices are normalized within angiosperms to have mean 0 and variance 1. Values are reported only for species
4 with ≥ 20 individuals. The data are organized by N-fixing status, then alphabetically by genus and species.