

# Molecular Authentication of the Traditional Medicinal Plant “Lakshman Booti” (*Smithia conferta* Sm.) and Its Adulterants through DNA Barcoding

Suraj D. Umdale<sup>1,2</sup>, Parthraj R. Kshirsagar<sup>1</sup>, Manoj M. Lekhak<sup>3</sup>, Nikhil B. Gaikwad<sup>1</sup>

<sup>1</sup>Department of Botany, Cytogenetics and Plant Breeding Laboratory, Shivaji University, <sup>2</sup>Department of Botany, Angiosperm Taxonomy Laboratory, Shivaji University, Kolhapur, <sup>3</sup>Department of Botany, Yashwantrao Chavan Institute of Science, Satara, Maharashtra, India

Submitted: 12-11-2016

Revised: 07-12-2016

Published: 11-07-2017

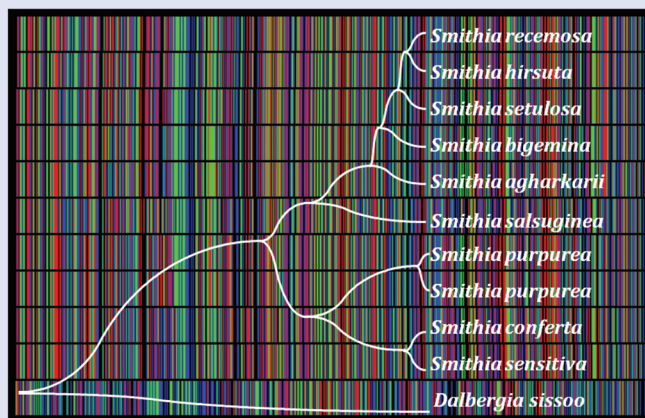
## ABSTRACT

**Background:** *Smithia conferta* Sm. is an annual herb widely used in Indian traditional medical practice and commonly known as “Lakshman booti” in Sanskrit. Morphological resemblance among the species of genus *Smithia Aiton.* leads to inaccurate identification and adulteration. This causes inconsistent therapeutic effects and also affects the quality of herbal medicine. **Aim:** This study aimed to generate potential barcode for authentication of *S. conferta* and its adulterants through DNA barcoding technique. **Materials and Methods:** Genomic DNA extracted from *S. conferta* and its adulterants was used as templates for polymerase chain reaction amplification of the barcoding regions. The amplicons were directed for sequencing, and species identification was conducted using BLASTn and unweighted pair-group method with arithmetic mean trees. In addition, the secondary structures of internal transcribed spacer (ITS) 2 region were predicted. **Results:** The nucleotide sequence of ITS provides species-specific single nucleotide polymorphisms and sequence divergence (22%) than *psbA-trnH* (10.9%) and *rbcL* (3.1%) sequences. The ITS barcode indicates that *S. conferta* and *Smithia sensitiva* are closely related compared to other species. **Conclusion:** ITS is the most applicable barcode for molecular authentication of *S. conferta*, and further chloroplast barcodes should be tested for phylogenetic analysis of genus *Smithia*.

**Key words:** DNA barcode, internal transcribed spacer, single nucleotide polymorphism, *Smithia*

## SUMMARY

- The present investigation is the first effort of utilization of DNA barcode for molecular authentication of *S. conferta* and its adulterants. Also, this study expanded the application of the ITS2 sequence data in the authentication. The ITS has been proved as a potential and reliable candidate barcode for the authentication of *S. conferta*.



**Abbreviations used:** BLASTn: Basic Local Alignment Search Tool for Nucleotide; MEGA: Molecular Evolutionary Genetic Analysis; EMBL: European Molecular Biology Laboratory; *psbA-trnH*: Photosystem II protein D1- structural RNA: His tRNA gene; *rbcL*: Ribulose 1,5 bi-phosphate carboxylase/ oxygenase large subunit gene.

## Correspondence:

Dr. Nikhil B. Gaikwad,  
Department of Botany, Cytogenetics and  
Plant Breeding Laboratory, Shivaji University,  
Kolhapur - 416 004, Maharashtra, India.  
E-mail: nbgaikwadsuk@gmail.com  
**DOI:** 10.4103/pm.pm\_499\_16

## Access this article online

Website: www.phcog.com

## Quick Response Code:



## INTRODUCTION

The genus *Smithia* (Fabaceae) is widely distributed in temperate and tropical regions of the Old World consisting of thirty species.<sup>[1]</sup> It is represented by 18 species native to Indian subcontinent,<sup>[2,3]</sup> and of these, 11 are endemic to India. *Smithia conferta* Sm. is an annual herb used in Indian Pharmacopoeia as crude drug.<sup>[4]</sup> It is commonly known as “Lakshman booti” in Sanskrit<sup>[5]</sup> and widely used in the traditional medical practice.

The Lakshman booti is used in the treatment of biliousness, ulcer, rheumatism, laxative, tonic, uterine trouble such as gravel along with regulating fertility, and also in sterility problems in women.<sup>[6-9]</sup> The leaf powder mixed with honey was advised for treating cholera and its ointment is used to cure elephantiasis.<sup>[9,10]</sup> It is also used to remove the effects of old age and wrinkles.<sup>[11]</sup> The morphological resemblance among the species of genus *Smithia Aiton.* leads to inaccurate identification and adulteration. This causes inconsistent therapeutic effects and also affects the quality of herbal medicine. Raising its demand in traditional and folk

medicines consequently, issues such as substitution, adulteration, and low-quality products create bottleneck toward authenticity. Therefore, there is an urgent need to develop a reliable and quick method for its identification. The DNA-based approach seems to be appropriate which provides a means of assessing the accuracy of the taxonomic treatment. The multi-locus approach based on the chloroplast and nuclear genome has been proposed and accepted for barcoding of land plants.<sup>[12,13]</sup> The

This is an open access article distributed under the terms of the Creative Commons Attribution-NonCommercial-ShareAlike 3.0 License, which allows others to remix, tweak, and build upon the work non-commercially, as long as the author is credited and the new creations are licensed under the identical terms.

**For reprints contact:** reprints@medknow.com

**Cite this article as:** Umdale SD, Kshirsagar PR, Lekhak MM, Gaikwad NB. Molecular authentication of the traditional medicinal plant “Lakshman Booti” (*Smithia conferta* Sm.) and its adulterants through DNA barcoding. Phcog Mag 2017;13:S224-9.

choice of barcoding regions is very crucial task, but the DNA regions such as internal transcribed spacer (ITS), *psbA-trnH*, and *rbcl* are suggested and proposed for constructing phylogeny and authentication of medicinal plants.<sup>[14-16]</sup> The aim of the present study was to test the discrimination power of these barcodes and establish reference database to facilitate future identification and authentication of *S. conferta*.

## MATERIALS AND METHODS

### Taxon sampling

A total of nine species of *Smithia* were collected from the Western Ghats of India. The plant material was identified, and voucher specimens have been deposited in the herbarium, Department of Botany, Shivaji University, Kolhapur, Maharashtra, India [Table 1].

### Genomic DNA isolation, amplification, and sequencing

Genomic DNA was extracted from dried leaves using cetyltrimethylammonium bromide method<sup>[17]</sup> with minor modifications. Polymerase chain reaction (PCR) amplification of three candidate DNA barcodes was carried out in an Eppendorf Master Cycler Pro (Eppendorf India Ltd., India) employing about 20 ng of genomic DNA as a template in 25 µl reaction mixture, which contains 1 × PCR buffer, 2.0 mM MgCl<sub>2</sub>, 0.2 mM of each dNTPs, 1 µM of each primer (Synthesized by Xcelris Labs Ltd., India), and 1.0 U of Taq DNA Polymerase (Fermentas, Thermo Fisher Scientific, India). We used three primer pairs corresponding to the barcode regions, namely, ITS (5 fwd-CCTTATCATTTAGAGGAAGGAG; 4 rev-TCCTCCGCTTATTGATATGC), *psbA-trnH* (*psbA* fwd-GTTATGCATGAACGTAATGCTC; *trnH* rev-CGCGCATG GTGGATTCACAAATC), and *rbcl* (1 fwd-CCTATCCATCTGGAA ATCTTAG; 724 rev-GCTACTGCAGGTACATGCGA). All the PCR products were purified with Axy Prep PCR Cleanup Kit (Axygen Scientific, USA). DNA sequencing was performed with Z-Big Dye Terminator Cycle Sequencing version 3 (Sci Genom Labs Pvt. Ltd., Kerala, India). Sequenced product was analyzed on automated ABI 3730XL analyzer (Sci Genom Labs Pvt. Ltd., Kerala, India) using forward primer. The low-quality sequences were subjected to re-sequencing.

### Sequence alignment and analysis

The sequences were analyzed with BLASTn of the National Centre for Biotechnology Information to confirm the identity of the samples (<http://blast.ncbi.nlm.nih.gov>).

Raw sequence data were analyzed with the Ridom Trace Edit version 1.1.0 (Ridom GmbH, Germany). Sequences were preliminarily aligned with multiple sequence alignment tool ClustalX. The secondary structure of the ITS2 was predicted according to Koetschan *et al.*<sup>[18]</sup> The ITS2 region was identified and delimited based on hidden Markov model which was performed through the web server (<http://its2.bioapps>). For authentication and assessment of relationships among the nine *Smithia* species, unweighted pair-group method with arithmetic mean (UPGMA)-based phylogenetic tree was constructed using MEGA6 software version 6.0.6. The genetic distances were calculated using Kimura 2-parameter distance model. The bootstrap test with 1000 replicates was applied to assess the reliability of phylogenetic trees.

## RESULTS

### Efficiency of amplification for each DNA barcode

The efficiency of the PCR amplification of ITS, *psbA-trnH*, and *rbcl* regions was 100%, and all the three candidate DNA regions were successfully sequenced. Sequences were submitted to the GenBank database (EMBL) and their accession numbers were listed in Table 1.

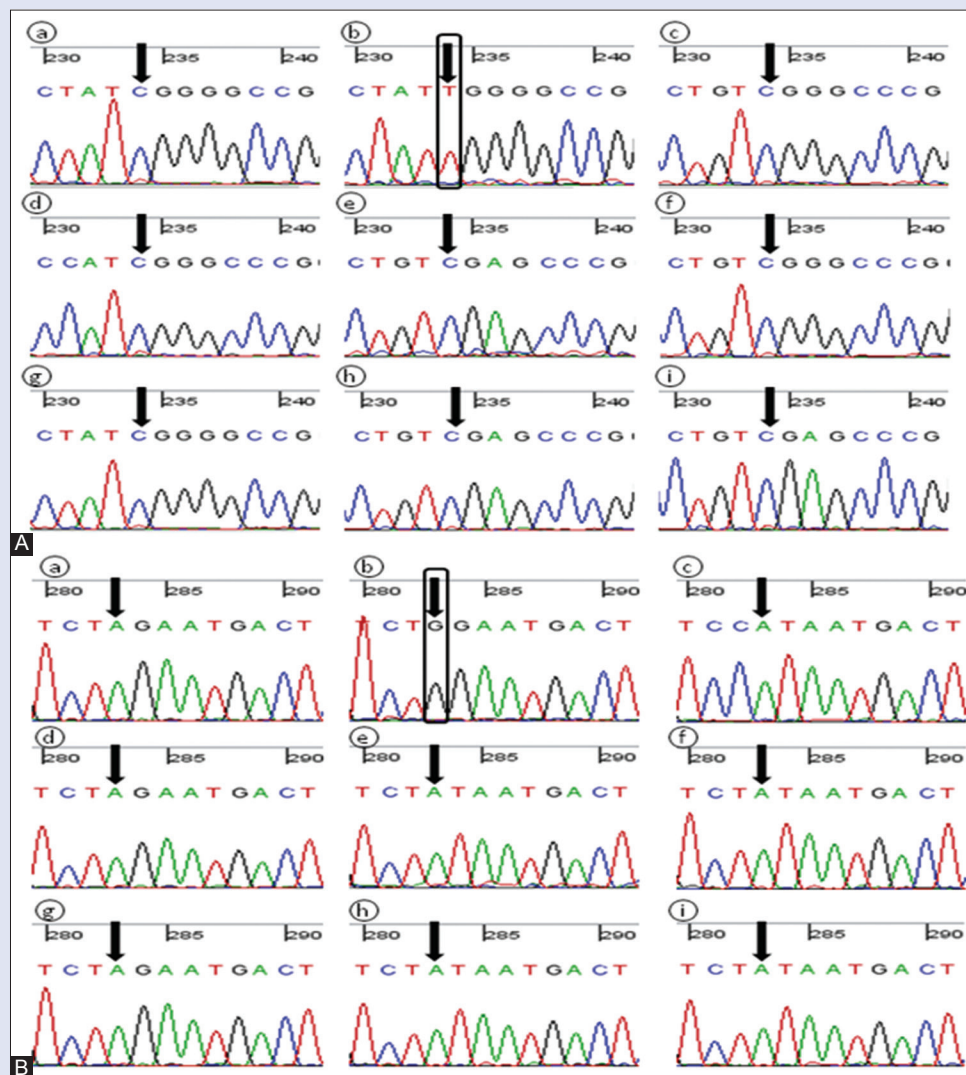
### Sequence analysis and interspecific variation among *Smithia* species

The DNA sequences of the ITS regions among *S. conferta* and its adulterants were highly conservative. The sequence length varied from 676 to 678 bases, and aligned length was 681 bp [Table 2]. Out of which, 529 (77.6%) were constant, 100 (14.6%) were parsimony informative, and 150 (22%) were variable sites. Two single nucleotide polymorphisms (SNPs) specific to *S. conferta* were detected at the aligned positions of 234 (C → T) and 283 (A → G) [Figure 1]. The sequences of *S. conferta* and *Smithia sensitiva* were identical at aligned positions 49 (T), 122 (C), 165 (C), 173 (T), and 210 (C) but showed SNPs when compared with other *Smithia* species. The nucleotide frequency of G + C (56%) was observed in *S. conferta* and *S. sensitiva*. Based on these SNPs, *S. conferta* and its adulterant species were differentiated. The interspecific divergence between *S. conferta* and other *Smithia* species varied from 9.3% to 13.5%, with an average interspecific distance of 8.4%. Together with other species of genus *Smithia*, the UPGMA tree based on Kimura 2-parameter model of ITS sequence data accurately discriminated *S. conferta* and its adulterants with high bootstrap support [Figure 2a].

**Table 1:** *Smithia* species used in this study with voucher information and GenBank accession number of barcodes

Taxa	Locality	Voucher specimens	Latitude/longitude	Altitude (ft)	GenBank accession number		
					ITS	<i>psbA-trnH</i>	<i>rbcl</i>
<i>S. agharkarii</i> Hemadri	Borbet, Kolhapur, Maharashtra	PRK-37	N16°30'54"/E73°53'31"	3207	LM644013	LM644029	LM644045
<i>S. bigemina</i> Dalzell	Kolhapur, Maharashtra	PRK-34	N16°40'31"/E71°15'01"	2231	LM644010	LM644026	LM644042
<i>S. conferta</i> Sm.	Kolhapur, Maharashtra	PRK-33	N16°40'24"/E74°13'09"	2068	LM644009	LM644025	LM644041
<i>S. hirsuta</i> Dalzell	Borbet, Kolhapur, Maharashtra	PRK-40	N16°30'56"/E73°53'32"	3207	LM644016	LM644032	LM644048
<i>S. purpurea</i> Hook	Bhimashankar, Pune, Maharashtra	PRK-31	N19°04'25"/E73°33'51"	3301	LM644007	LM644023	LM644039
<i>S. purpurea</i> Hook	Bhimashankar, Pune, Maharashtra	PRK-32	N19°04'25"/E73°33'81"	3301	LM644008	LM644024	LM644040
<i>S. racemosa</i> Wight and Arn	Kolhapur, Maharashtra	PRK-36	N16°40'49"/E74°15'45"	2136	LM644012	LM644028	LM644044
<i>S. salsuginea</i> Hance	Karjat, Thane, Maharashtra	PRK-35	N19°08'19"/E73°25'47"	587	LM644011	LM644027	LM644043
<i>S. sensitiva</i> Aiton	Gaganbawada, Kolhapur, Maharashtra	PRK-38	N16°31'57"/E73°49'50"	1871	LM644014	LM644030	LM644046
<i>S. setulosa</i> Dalzell	Gaganbawada, Kolhapur, Maharashtra	PRK-39	N16°31'54"/E73°49'59"	2021	LM644015	LM644031	LM644047
<i>D. sissoo</i> Roxb. ex. DC	-	-	-	-	JX856444	JX856874	GU135159

ITS: Internal transcribed spacer; *S. agharkarii*: *Smithia agharkarii*; *S. bigemina*: *Smithia bigemina*; *S. conferta*: *Smithia conferta*; *S. hirsute*: *Smithia hirsute*; *S. purpurea*: *Smithia purpurea*; *S. racemosa*: *Smithia racemosa*; *S. salsuginea*: *Smithia salsuginea*; *S. sensitiva*: *Smithia sensitiva*; *S. setulosa*: *Smithia setulosa*; *D. sissoo*: *Dalbergia sissoo*



**Figure 1:** The portion of chromatogram sequences of internal transcribed spacer region of *Smithia conferta* and other species of genus *Smithia*. (A) Single nucleotide polymorphism detected at the aligned positions of 234 specific to (a) *Smithia purpurea*, (b) *Smithia conferta*, (c) *Smithia bigemina*, (d) *Smithia salsuginea*, (e) *Smithia racemosa*, (f) *Smithia agharkarii*, (g) *Smithia sensitiva*, (h) *Smithia setulosa*, (i) *Smithia hirsuta*; (B) single nucleotide polymorphism detected at the aligned positions of 283 specific to (a) *Smithia purpurea*, (b) *Smithia conferta*, (c) *Smithia bigemina*, (d) *Smithia salsuginea*, (e) *Smithia racemosa*, (f) *Smithia agharkarii*, (g) *Smithia sensitiva*, (h) *Smithia setulosa*, (i) *Smithia hirsuta*. Box indicates single nucleotide polymorphism. Numbers at the top indicate nucleotide position

The sequence variations of *psbA-trnH* among *S. conferta* and other *Smithia* species varied from 1.4% to 7.6%, with an average interspecific distance of 4.8%. The sequence length varied from 338 bp to 354 bp, with aligned length of 356 bp and 10.9% nucleotide divergence. The remarkable nucleotide frequency of G + C (32%) was found in *S. conferta*. Within *psbA-trnH*, 39 (10.9%) sites were variable, 309 (86.8%) were conserved, 13 (3.6%) were singleton, and 26 (7.3%) were parsimony informative. Among the aligned sequences, two SNPs at 238 (A → G) and 286 (T → G) were found specific to *S. conferta*. Results revealed unique 6 bp insertion (ATTTTT) between 44<sup>th</sup> and 49<sup>th</sup> positions. *S. conferta* is distinctly recognized from its adulterant *Smithia* species in UPGMA tree based on Kimura 2-parameter model [Figure 2b].

The DNA sequences of *rbcl* region of *S. conferta* and its adulterants were not showed much variation than the ITS and *psbA-trnH* regions. The identical sequences were observed in *S. conferta* and *S. sensitiva*. Four SNPs, 186 (C → T), 388 (C → T), 634 (A → C), and 649 (G → A), specific to *S. conferta* and *S. sensitiva* were detected at the aligned sequences of

*rbcl*, and the sequence length was 705 bases [Table 2]. Out of which, 683 (96.8%) were constant, 13 (1.8%) were parsimony informative, 9 (1.2%) were singleton, and only 22 (3.1%) were variable sites. Very low sequence divergence (1.1%–1.8%) was observed among *S. conferta* and its adulterants with an average interspecific distance of 1.1%. The nucleotide frequency of G + C (42%) was reported in *S. conferta* [Table 2]. Remarkably, no single insertion or deletion was observed in all species under investigation. According to the UPGMA tree based on Kimura 2-parameter model, *S. conferta* and its adulterants were placed in two different clusters with high bootstrap support and differentiated from *S. sensitiva* by least SNPs [Figure 2c]. The *rbcl* sequence data were unable to distinguish *S. conferta* from its adulterant *Smithia* species.

### Secondary structure of the internal transcribed spacer 2 sequences

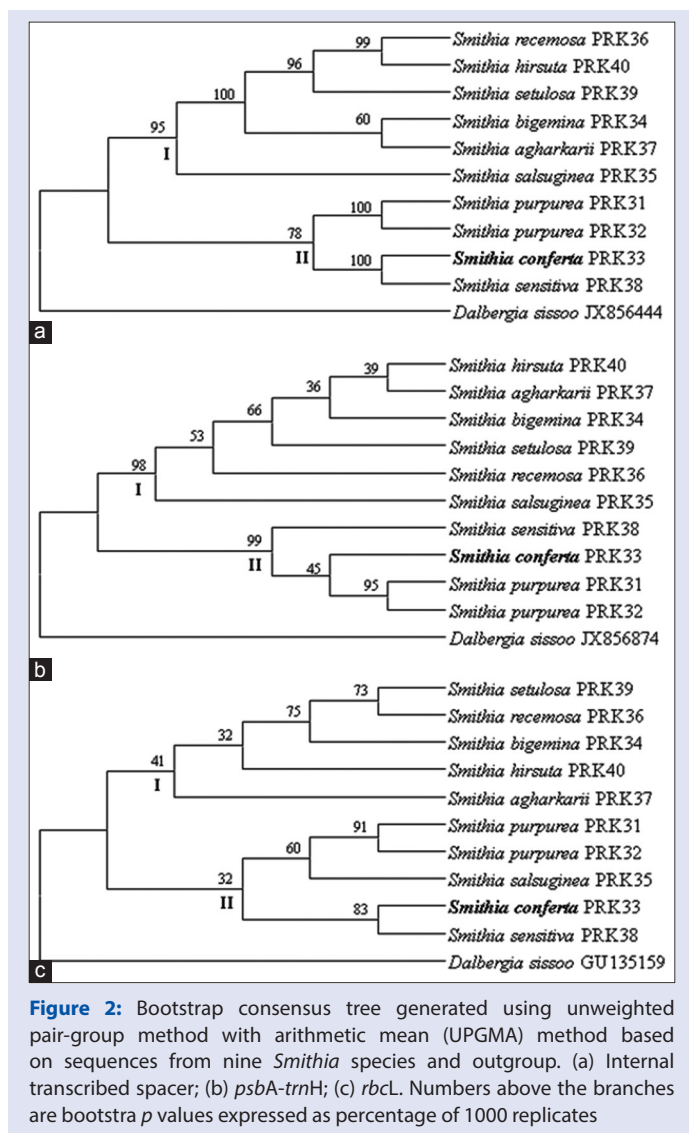
For authentication of *Smithia* species, we focused not only on the divergence of the sequences of nuclear ITS region, but also used



**Table 2:** Barcoding information of *Smithia* species sequence data sets for one nuclear and two chloroplast regions

Locus	With/without outgroup	Sequence length (nt)	Aligned length (nt)	G + C	Sequence divergence (%)	Overall mean distance (%)	VS (%)	CS (%)	SS (%)	PI (%)	Ti (%)	Tv (%)
ITS	Without outgroup	676-678	681	27.7	22	8.4	150 (22)	529 (77.6)	50 (7.3)	100 (14.6)	72.4	27.5
	Without group	676-680	691	28.1	33.7		233 (33.7)	466 (67.4)	118 (17)	115 (22.4)	71	28.2
<i>psbA-trnH</i>	Without outgroup	338-347	356	16.9	10.9	4.8	39 (10.9)	309 (86.8)	13 (3.6)	26 (7.3)	60.1	39.9
	Without group	338-352	402	16.7	18.6		75 (18.6)	281 (69.9)	47 (11.6)	24 (5.9)	62.7	37.2
<i>rbcl</i>	Without outgroup	705	705	21.2	3.1	1.1	22 (3.1)	683 (96.8)	9 (1.2)	13 (1.8)	74.8	21.4
	Without group	705-716	730	21.0	5.2		38 (5.2)	667 (91.3)	25 (3.4)	13 (1.8)	61.8	38.2

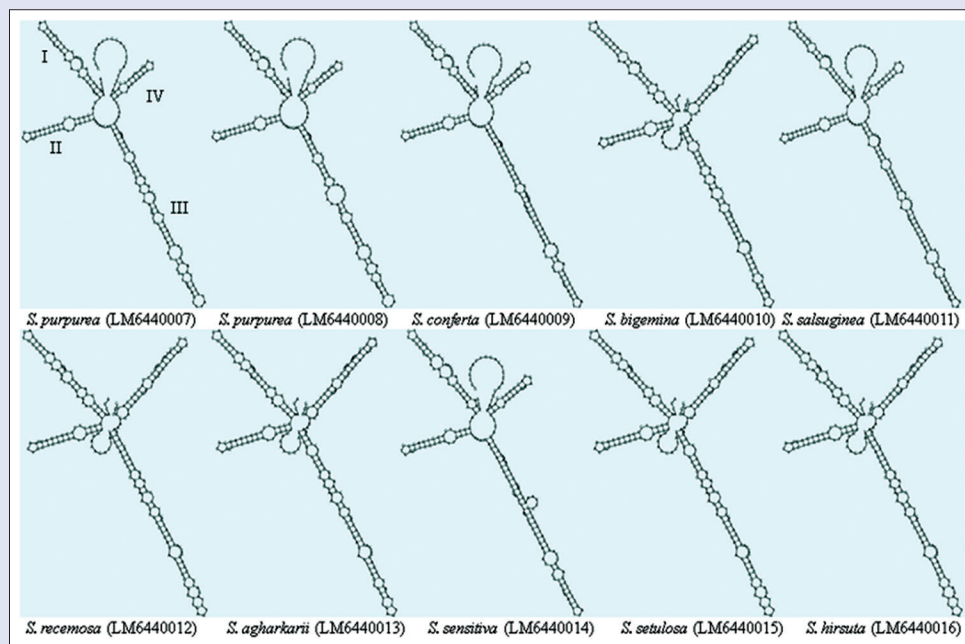
VS: Variable sites; CS: Conserved sites; SS: Singleton sites; PI: Parsimony informative sites; Ti: Transitions; Tv: Internal transcribed spacer



variations in the secondary structures of ITS2. All the *Smithia* species had a typical 4-helix folding structure, a central ring, and four similar helices: Helices I, II, III, and IV. Moreover, helix III was longer than other helices [Figure 3]. It revealed that their variation was mainly present in helices I, III, and IV in ITS2 secondary structure. The helix II was most stable and showed pyrimidine-pyrimidine base pairs. The secondary structure of *S. conferta* shows that helices I and II were different from the others and the secondary structure of *S. sensitiva* is close to *S. conferta*, but it can still distinguish them at helix IV. Thus, we can distinguish *S. conferta* from its adulterants by comparing ITS2 secondary structures.

## DISCUSSION

Traditionally, *S. conferta* is used in Ayurveda and has reported a wide range of biological activities, namely, laxative, diuretic, antifungal, antimicrobial, anti-inflammatory, antirheumatic, tonic, antibilious, headache, ulcers, reduces wrinkles, reduces sterility problems in women, and stimulates central nervous system. Similarly, the worm leaf paste is used to reduce bodyache.<sup>[19]</sup> Pullaiah and Naidu<sup>[20]</sup> reported antidiabetic activity of *S. conferta*. Furthermore, rendering the authentication of *Smithia* species based on morphological methods is very difficult. In recent years, adulteration of medicinal plant species is a matter of



**Figure 3:** The secondary structure of internal transcribed spacer 2 of *Smithia conferta* and its adulterants

discussion in drug discovery, which ultimately leads to serious health implications. Therefore, it becomes priority to distinguish adulterants in plant samples. Recently, DNA barcoding approach attracted worldwide attention with promises to aid in the authentication and scrutinization of species relationships.<sup>[12,13,16]</sup> Here, three DNA barcoding regions, namely, ITS, *psbA-trnH*, and *rbcL* were evaluated for authentication of *S. conferta*. The present study for the first time established DNA barcodes for identification and authentication of *Smithia* species.

The present barcoding investigation accounts for 100% amplification and sequencing efficiencies. The data obtained from the variable sequence sites and deletions/insertions facilitated the identification of *Smithia* species based on ITS, *psbA-trnH*, and *rbcL* sequences.

The *psbA-trnH* is the most widely used barcode in species discrimination due to higher rate of indels.<sup>[12]</sup> In the present study, unique indels were observed in *S. conferta*. However, indels are common and often more common than SNPs which is a limitation of *psbA-trnH*.<sup>[21]</sup> Although *rbcL* offers high universality, good PCR amplification, and sequencing, it was demonstrated to have insufficient sequence variation to distinguish closely related species.<sup>[12]</sup> In this study, the lowest sequence divergence was observed in *rbcL* sequence data.

The discriminating power of plastid regions was significantly lower than the nuclear region (ITS) because of slow rate of evolution.<sup>[12,22,23]</sup> Results showed that ITS is one of the most appropriate and suitable barcodes with highest discrimination potential.<sup>[18]</sup> Similarly, a previous study on authentication of medicinal plants also proved that ITS region has the potential as universal barcode.<sup>[13,24-27]</sup> In the present study, it was reported that ITS sequences of *S. conferta* and *S. sensitiva* are identical except unique SNPs in *S. conferta*. *S. conferta* is a unique medicinal plant according to Indian Pharmacopoeia, and *S. sensitiva*, *Smithia hirsuta*, *Smithia racemosa*, and *Smithia setulosa* are used as adulterants.<sup>[7,9]</sup> Based on DNA barcoding studies, it is appropriate to treat *S. conferta* and *S. sensitiva* as a distinct species. In the present investigation, the precise and standard DNA barcodes were proposed for the authentication of *Smithia* species.

The current investigation is the first effort of utilization of DNA barcode for molecular authentication of *S. conferta* and its adulterants.

Furthermore, this study expanded the application of the ITS2 sequence data in the authentication of medicinal plant research. Several studies used DNA barcoding methods to identify Indian medicinal plants, such as *Swertia L.*<sup>[16]</sup> and *Sida L.*<sup>[28]</sup> In addition, they had verified the utilization of ITS sequence for the authentication of herbal medicinal plants.

## CONCLUSION

The ITS region provides enough variability over *psbA-trnH* and *rbcL* for authentication of *S. conferta* and its adulterants. This study provided a scientific approach, based on DNA barcoding, to accurately and rapidly identify *Smithia* species. The ITS has been proved as a potential and reliable candidate barcode for the authentication of *S. conferta* and its adulterants. The present findings also suggest that further chloroplast barcodes should be tested for phylogenetic analysis of genus *Smithia*.

## Acknowledgement

The authors are grateful to Head, Department of Botany, Shivaji University, Kolhapur, India, for providing necessary laboratory facilities.

## Financial support and sponsorship

Nil.

## Conflicts of interest

There are no conflicts of interest.

## REFERENCES

- Kumar S, Sane PV. Legumes of South Asia: A Check-List. Kew, UK: Royal Botanic Gardens; 2003. p. 243.
- Sanjappa M. Genus *Smithia*. In: Singh B, Singh M, editors. Legumes of India. Dehradun: Bishen Singh Mahendra Pal Singh; 1991. p. 246-8
- Yadav SR, Sardesai MM. Flora of Kolhapur District. Kolhapur: Shivaji University, Kolhapur; 2002.
- Chopra RN, Nayar SL, Chopra IC. Glossary of Indian Medical Plants. New Delhi: Council of Scientific and Industrial Research; 1956. p. 228-9.
- Yadava RN. Novel biologically active flavonoidal constituent from *Smithia* by RN yadava *Smithia conferta* 1, 2 (N. O. Leguminosae) is commonly known as Lakshman booti. Glossary

- of Indian Medicinal Plants. New Delhi: CSIR Publication; 1956. p. 228-9.
6. Mobar TJ, Markban KR, Thomas MB. The Systematic Identification of Flavonoids. New York: Springer; 1970. p. 354.
  7. Lal D, Lata K. Plants used by the bhat community for regulating fertility. *Econ Bot* 1980;34:273-5.
  8. Begum NA, Chaudhary DN, Banerji J, Das BP. Studies on a carbazole alkaloid from *Murraya koenigii* spreng. and flavonoids from *Pongamia glabra* Vent. *J Indian Chem Soc* 2005;82:165-71.
  9. Agarwal R, Garg HK, Garg U, Singh SK. Anti-ulcer activity of *Smithia conferta* in various animal. *J Saudi Chem Soc* 2010;14:307-10.
  10. Linuma M, Mosayoshi O, Toshiyuki T, Mizuo M, Lang FA. Two C-Methylated flavonoid glycosides from the roots of *Sophora leachiana*. *J Nat Prod* 1991;54:1144-6.
  11. Yadava RN. Novel biologically active flavonoidal constituent from *Smithia conferta* Sm. In: Harper J, An M, Wu H, Kent JH, editors. Proceedings of the Fourth World Congress on Allelopathy. International Allelopathy Society. Wagga Wagga, NSW, Australia: The Regional Institute Ltd., Gosford, NSW 2250, Charles Sturt University; 2005. p. 21-6.
  12. Kress WJ, Erickson DL. A two-locus global DNA barcode for land plants: The coding *rbcL* gene complements the non-coding *trnH-psbA* spacer region. *PLoS One* 2007;2:e508.
  13. China Plant BOL Group. Comparative analysis of a large dataset indicates that internal transcribed spacer (ITS) should be incorporated into the core barcode for seed plants. *China Plant Bol Group* 2011;108:19641-6.
  14. Newmaster SG, Fazekas AJ, Ragupathy S. DNA barcoding in land plants: Evaluation of *rbcL* in a multigene tiered approach. *Can J Bot* 2006;84:335-41.
  15. Sucher NJ, Carles MC. Genome-based approaches to the authentication of medicinal plants. *Planta Med* 2008;74:603-23.
  16. Kshirsagar PR, Umdale SD, Chavan JJ, Gaikwad NB. Molecular authentication of medicinal plant, *Swertia chirayita* and its adulterant species. *Proc Natl Acad Sci India Sect B Biol Sci* 2017;87:101-7. DOI 10.1007/s40011-015-0556-3.
  17. Doyle JJ, Doyle JL. A rapid DNA isolation procedure for small quantities of fresh leaf tissue. *Phytochem Bull* 1987;19:11-5.
  18. Koetschan C, Förster F, Keller A, Schleicher T, Ruderisch B, Schwarz R, *et al.* The ITS2 database III – Sequences and structures for phylogeny. *Nucleic Acids Res* 2010;38:D275-9.
  19. Quattrocchi U. CRC World Dictionary of Medicinal and Poisonous Plants. NW, USA: CRC Press, Taylor and Francis Group; 2012. p. 3473.
  20. Pullaiah T, Naidu KC. Antidiabetic plants in India and herbal based antidiabetic research. New Delhi, India: Regency Publications; 2003.
  21. Bruni I, De Mattia F, Galimberti A, Galasso G, Banfi E, Casiraghi M, *et al.* Identification of poisonous plants by DNA barcoding approach. *Int J Legal Med* 2010;124:595-603.
  22. Hebert PD, Gregory TR. The promise of DNA barcoding for taxonomy. *Syst Biol* 2005;54:852-9.
  23. Lahaye R, van der Bank M, Bogarin D, Warner J, Pupulin F, Gigot G, *et al.* DNA barcoding the floras of biodiversity hotspots. *Proc Natl Acad Sci U S A* 2008;105:2923-8.
  24. Chen S, Yao H, Han J, Liu C, Song J, Shi L, *et al.* Validation of the ITS2 region as a novel DNA barcode for identifying medicinal plant species. *PLoS One* 2010;5:e8613.
  25. Gao T, Yao H, Song J, Liu C, Zhu Y, Ma X, *et al.* Identification of medicinal plants in the family *Fabaceae* using a potential DNA barcode ITS2. *J Ethnopharmacol* 2010;130:116-21.
  26. Zhou J, Wang W, Liu M, Liu Z. Molecular authentication of the traditional medicinal plant *Peucedanum praeruptorum* and its substitutes and adulterants by DNA – Barcoding technique. *Pharmacogn Mag* 2014;10:385-90.
  27. Coutinho Moraes DF, Still DW, Lum MR, Hirsch AM. DNA-Based authentication of botanicals and plant-derived dietary supplements: Where have we been and where are we going? *Planta Med* 2015;81:687-95.
  28. Santhosh Kumar JU, Krishna V, Seethapathy GS. DNA barcoding to assess species adulteration in raw drug trade of “Bala” (genus: *Sida* L.) herbal products in South India. *Biochem Syst Ecol* 2015;61:501-9.