



PHOENIX GOLD

THE GOLD STANDARD IN SOUND

PHOENIX GOLD
PRODUCT GUIDE
2023

PHOENIXGOLD-EU.COM

THE GOLD STANDARD IN SOUND



PHOENIX GOLD



PHOENIXGOLD-EU.COM

12" HIGH POWER SPL SUBWOOFER
PHOENIX GOLD
POWER
Phoenix Gold

Phoenix Gold Product Range 2023

Phoenix Gold delivers ultimate in-vehicle audio solutions, perfect for your choice of music. Our product range offers high-quality components that will enhance your vehicle's audio.

With 37 years in the car audio industry, we have developed a reputation for providing premium quality products, a reputation we work hard to maintain to this day. Our many years of knowledge in the industry have made us specialists in in-car audio.

Our range of products reflects our continued dedication to our key values of performance, innovation, quality, and excellence, bringing you the Gold standard in sound.



Z Range

04 | Amplifiers & DSPs

- 05 | Z-Series
- 06 | ZX-Series
- 07 | ZR-Series
- 08 | ZQ-Series
- 11 | ZT-Series
- 12 | ZD-Series

14 | Subwoofers & Enclosures

- 15 | Z-Series
- 20 | ZR-Series
- 23 | ZX-Series

24 | Speakers & Tweeters

- 25 | Z-Series
- 27 | ZX-Series
- 29 | ZR-Series
- 30 | ZP-Series

32 | OEM Fit Speakers

36 | OEM DSP Power Up Kits

38 | Amplifier Wiring Kits

- 38 | ZX-Series
- 39 | ZR-Series

RX2 Series

- 41 | Amplifiers
- 42 | Subwoofers
- 43 | Speakers

MX Series

- 46 | Amplifiers
- 47 | Subwoofers

GX Series

- 49 | Amplifiers
- 50 | Subwoofers

Processors

- 52 | EQ9.0
- 52 | BASSCUBE 2.0

Outdoor Speakers

- 54 | 5" Speakers
- 55 | 6" Speakers

European Division

AAMP Nordic AB
Brodalsvägen 1B
433 38
Partille
Sweden

Phone +46 (0)31 44 44 12
E-mail order@aamp.se

UK Division

94 Vantage Point, Second Avenue,
Pensnett Trading Estate,
Kingswinford, West Midlands,
DY6 7FS
United Kingdom

Phone +44 (0)1384 958501
E-mail sales@aampglobal-eu.com

AAMP
— ADVANCING VEHICLE TECHNOLOGY —

Phoenix Gold is a Brand
of AAMP Global

AMPLIFIERS & DSPS

Z
series



ZX
series



ZR
series



ZQ
series



ZT
series



ZD
series



Z-Series Amplifiers | Features & benefits

OEM Connection Ready - compatible with aftermarket & original source units

Remote Bass Ready - control the bass level with included ZRBC (Z3001i only)

High-Level Auto-Turn On - powers on the amp when an audio signal is supplied

Integrated Cooling Fan - regulates temperature for sustained performance

High & Low-Level Inputs - versatile connectivity to suit any install

Heavy-Duty Connector Block - enables maximum current supply

4-Way Protected Circuit - protection against thermal damage, reversed power, speaker polarity and low voltage



Z1502i

Z-SERIES

Compact Class A/B 2-Channel Amplifier

Power (MAX) 400W

Power Ratings (RMS)

70W x 2 @ 4Ohm

100W x 2 @ 2Ohm

200W x 1 @ 4Ohm bridged

Frequency Response 20Hz - 20kHz

Signal to Noise Ratio >96dB

High & Low Pass Crossover 6dB per Octave

Crossover Range 50Hz - 400Hz

Bass Boost @ 45Hz 0 to +18dB

Low - High Level Input Range 0.2V to 10V

Minimum Load Impedance 2Ohm stereo & 4Ohm bridged

Dimensions (L x W x H) 184 x 160 x 48mm



Z3001i

Z-SERIES

Compact Class A/B Monoblock Amplifier

Power (MAX) 600W

Power Ratings (RMS)

200W x 1 @ 4Ohm

340W x 1 @ 2Ohm

Frequency Response 20Hz - 250Hz

Signal to Noise Ratio >96dB

High & Low Pass Crossover 12dB per Octave

Crossover Range 50Hz - 250Hz

Bass Boost @ 45Hz 0 to +12dB

Low - High Level Input Range 0.2V to 10V

Subsonic Filter 12dB per Octave

Subsonic Crossover Range 10Hz - 55Hz

Minimum Load Impedance 2Ohm

Dimensions (L x W x H) 254 x 160 x 48mm

Includes Bass Controller (ZRBC)



Z3004i

Z-SERIES

Compact Class A/B 4-Channel Amplifier

Power (MAX) 600W

Power Ratings (RMS)

65W x 4 @ 4Ohm

90W x 4 @ 2Ohm

180W x 2 @ 4Ohm bridged

Frequency Response 20Hz - 20kHz

Signal to Noise Ratio >96dB

High & Low Pass Crossover 6dB per Octave

Crossover Range 50Hz - 400Hz

Low - High Level Input Range 0.2V to 10V

Minimum Load Impedance 2Ohm stereo & 4Ohm bridged

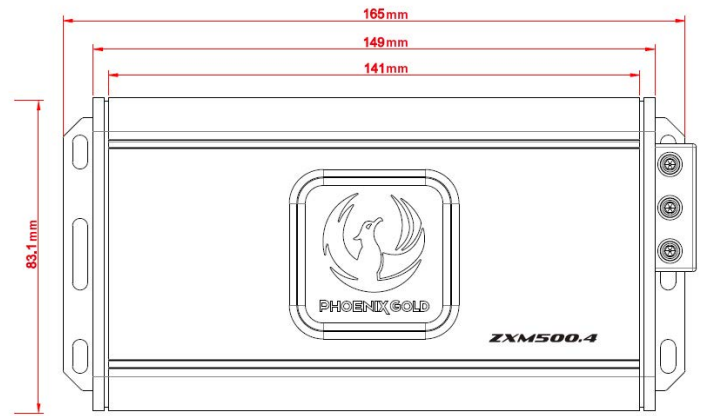
Dimensions (L x W x H) 254 x 160 x 48mm

ZX-Series Mini Amplifiers | Features & benefits

Massive Power & Performance

- Full Class-D technology offers efficiency & performance
- Short circuit/thermal and high/low voltage protection
- Excellent signal to noise ratio and FM noise rejection
- Remote gain controller included (ZXM500.1)
- Built in protection LED light status indicator
- Surface mount component technology
- Ultra small size for easy installation
- Autostart on high-level input
- Full adjustable HP & LP filter

**SMALL IN SIZE,
BIG IN POWER!**



ZXM500.1

ZX-SERIES

Class-D Mono Mini Amplifier

Power (MAX) 1000W

Power Ratings (RMS)

500W x 1 @ 1Ohm

360W x 1 @ 2Ohm

230W x 1 @ 4Ohm

Frequency Response 20Hz - 500Hz

Signal to Noise Ratio >90dB

Total Harmonic Distortion <0.3%

Low Pass Filter 40Hz - 250Hz (24dB/Oct)

Subsonic 10Hz - 50Hz (24dB/Oct)

Bass Boost 0 - 18dB @ 45Hz

High Level Input Auto Turn-On

Remote Control Included

Dimensions (L x W x H) 165 x 83.1 x 34.8mm

ZXM500.4

ZX-SERIES

Class-D 4-Channel Mini Amplifier

Power (MAX) 1000W

Power Ratings (RMS)

125W x 4 @ 2Ohm

80W x 4 @ 4Ohm

250W x 2 @ 4Ohm bridged

Frequency Response 20Hz - 20kHz

Signal to Noise Ratio > 90dB

Total Harmonic Distortion < 0.3%

Low Pass Filter 40Hz - 400Hz (12dB/Oct)

High Pass Filter 40Hz - 400Hz (12dB/Oct)

High Level Input Auto Turn-On

Dimensions (L x W x H) 165 x 83.1 x 34.8mm



ZX-Series Mini Amplifiers | Accessories

ZXMISOT

ZX-SERIES

ISO-T Harness

1M ISO - ISO Connector for ZXM500.4 amplifier.

ZXMSY

ZX-SERIES

Y-Cable for signal Micro-fit

RCA Y-cable to passthrough low level signal to another amplifier.

Made for: ZXM500.1 & ZXM500.4

ZXMSC5

ZX-SERIES

Speaker Cable

5m Speaker cable extension for ZXM500.4 amplifier.

ZR-Series Amplifiers | Features & benefits

Massive Power & Performance

High Level Auto-Turn On - powers on the amp when audio signal is supplied

OEM Connection Ready - compatible with aftermarket/original source units

Remote Bass Ready - control bass with included ZRBC (ZR10001 & ZR20001)

Fanless Design - regulates temperature internally for quiet operation

High & Low Level Inputs - versatile connectivity to suit any install

Heavy Duty Connector Block - enables maximum current supply

4-Way Protected Circuit - protection against thermal damage, reversed power, speaker polarity and low voltage



ZR6004

ZR-SERIES

600W 4-Channel Class-D Amplifier

Power Ratings (RMS)

150W x 4 @ 2Ohm

100W x 4 @ 4Ohm

300W x 2 @ 4Ohm (bridged)

Class-D Technology

Frequency Response 20Hz – 20kHz

Signal to Noise Ratio >96dB

High & Low Pass Crossover 12dB per octave

Crossover Range 40Hz – 6kHz

Low Level Input Range 0.2V to 10V

High Level Input Range 1V to 30V

Min Load Impedance 2Ohm stereo & 4Ohm bridged

Dimensions (L x W x H) 253 x 160 x 48mm



ZR10001

ZR-SERIES

1000W Monoblock Class-D Amplifier

Power Ratings (RMS)

1000W x 1 @ 1Ohm

600W x 1 @ 2Ohm

350W x 1 @ 4Ohm

Class-D Technology

Frequency Response 20Hz – 400Hz

Signal to Noise Ratio >96dB

High & Low Pass Crossover 24dB per octave

Crossover Range 50Hz – 250Hz

Subsonic Crossover Range 10Hz – 55Hz

Bass Boost @ 45Hz 0 to +18dB

Phase Control 0-180°

Low Level Input Range 0.2V to 10V

High Level Input Range 1V to 30V

Min Load Impedance 1Ohm

Dimensions (L x W x H) 243 x 160 x 48mm

Includes Bass Controller (ZRBC)



ZR20001

ZR-SERIES

2000W Monoblock Class-D Amplifier

Power Ratings (RMS)

2000W x 1 @ 1Ohm

1200W x 1 @ 2Ohm

700W x 1 @ 4Ohm

Class-D Technology

Frequency Response 20Hz – 400Hz

Signal to Noise Ratio >96dB

High & Low Pass Crossover 24dB per octave

Crossover Range 50Hz – 250Hz

Subsonic Crossover Range 10Hz – 55Hz

Bass Boost @ 45Hz 0 to +18dB

Phase Control 0-180°

Low Level Input Range 0.2V to 10V

High Level Input Range 1V to 30V

Min Load Impedance 1Ohm

Dimensions (L x W x H) 383 x 160 x 48mm

Includes Bass Controller (ZRBC)

ZQ

series



AWARD WINNING AMPLIFIERS

The Phoenix Gold product team designed a limited-edition concept amplifier called the ZQ9004. The amplifier was released and sold out in a matter of days and won the prestigious 'Amplifier of the Year' award in Car & HiFi Magazine. The people that listened to the ZQ9004 were amazed at the natural uncompromised sound of its design that both has the past, present, and future all in one. With its class A/B design, the best components available along with being designed and evaluated by industry specialists and the Phoenix Gold team.

Following its success and demand, we have launched a production ZQ9004 all be it in a classic Phoenix Gold housing!...

ZQ9004

ZQ-SERIES

4-Channel Class A/B High End Audiophile Amplifier

Power Ratings (RMS)

4 x 150W @ 4Ohm

4 x 230W @ 2Ohm

2 x 460W @ 4Ohm

Frequency Response 10Hz - 55kHz

Signal to Noise Ratio 110dB+

Input Sensitivity 400mV - 5V

Input Impedance 22K Ohm

Supply Voltage 11V - 15V

No filters, no boost, no EQ, just raw power

Heatsink dissipates heat from the pure class

A/B amplifier technology

Dimensions (L x W x H) 456 x 203.5 x 58.5mm



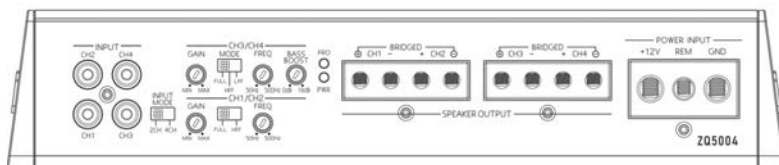
ZQ-Series Award Winning Amplifiers | Features & benefits

Modern engineering meets classic design

The ZQ Series of amplifiers feature award winning technology that not only offers a natural uncompromised sound but also a design that represents Phoenix Gold's past, present, and future all in one. Highly sought after by PG enthusiasts and audiophiles alike, the ZQ Series is a rebirth of PG's original core values offering premium high-end technology that brings the purest audio sound to the masses.

Gold Treated PCB's feature a unique two layered, gold immersion treatment
 24K gold plated terminals for perfect connectivity
 Optimised dual power supply to proficiently feed the amp
 Nichicon (Japan) & Wima (Germany) capacitors

High end polymer gain potentiometers
 Shielded transformer cores manufactured in Germany
 Dual colour extrusion heatsink with heat transfer optimisation

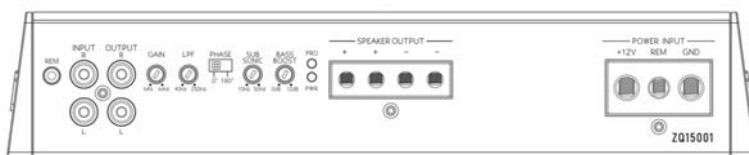


ZQ5004

ZQ-SERIES

4-Channel Class A/B High End Amplifier

Pure Class A/B Technology
 Power Ratings (RMS)
 85W x 4 @ 4Ohm
 130W x 4 @ 2Ohm
 250W x 2 @ 4Ohm (bridged)
 Frequency Response 10Hz – 55kHz
 Signal to Noise Ratio >100dB
 Crossover range 50Hz – 500Hz
 Bass Boost @ 45Hz 0 to +18dB
 Input Impedance 22K Ohm
 Supply Voltage 11V - 15V
 Dimensions (L x W x H) 280 x 200 x 56mm



ZQ15001

ZQ-SERIES

Monoblock Class D High End Amplifier

Pure Class D Technology
 Power Ratings (RMS)
 650W x 1 @ 4Ohm
 1000W x 1 @ 2Ohm
 1500W x 1 @ 1Ohm
 Frequency Response 5Hz – 250Hz
 Signal to Noise Ratio >80dB
 Low Pass Frequency 40Hz – 250Hz
 Subsonic Range 5Hz – 50Hz
 Bass Boost @ 45Hz 0 to +18dB
 Phase Control 0-180°
 Input Impedance 20K Ohm
 Supply Voltage 11V - 15V
 Dimensions (L x W x H) 280 x 200 x 56mm



ZQA6.8
ZQ-SERIES

6-Channel High End Amplifier with 8-Channel DSP

Power Ratings (RMS)
 85W x 6 @ 4Ohm
 130W x 6 @ 2Ohm
 95W x 4 + 280W x 1 @ 4Ohm (bridged)
 Frequency Response 10Hz – 22kHz
 Signal to Noise Ratio >100dB
 Crossover Range 20Hz – 20kHz
 8-Channel in-built DSP
 Gain output signal -15dB to +15dB
 Optical and digital coaxial inputs
 USB and Bluetooth compatible
 Dimensions (L x W x H) 341 x 200 x 56mm

ZQDSP12
ZQ-SERIES

12-Channel High End DSP

Signal to Noise Ratio >107dB
 Frequency Range 10Hz – 22kHz
 10-channel high level input (& 2x low level inputs)
 Multiple inputs easy to match with various brands of head unit
 Bluetooth 5.0 supports music streaming
 High end components bring excellent sound performance
 Includes PC application which allows easy interface to customize sound
 Fully programmable audio DSP for enhanced sound processing
 Dimensions (L x W x H) 236 x 200 x 56mm



ZQ-Series | Accessories



ZQDCT
ZQ-SERIES

ZQ Controller with 3,2" screen

Controls Volume control, Play / Pause, Skip songs, Music source choice, DSP Presets selection
Display 3.2" LCD, Blue backlight buttons
Processor Texas instruments
Works with ZQDSP12, ZQA6.8
Specifications 5M Cable (Included), 3.2" Screen Rotary controller with push function
Dimensions (L x W x H) 120 x 66x 25mm



ZQWCT
ZQ-SERIES

ZQ Wireless Bluetooth Controller

Volume control
 Skip forward/back songs
 Music source choice
 Wireless

ZT

series

POWERFUL 24VOLT CLASS D AMPLIFIERS SUITABLE FOR 24VOLT SYSTEMS

ZT-Series Amplifiers | Features & benefits

High Level Auto-Turn On - powers on the amp when audio signal is supplied

OEM Connection Ready - compatible with aftermarket/original source units

Integrated Fan - regulates temp. for sustained performance (ZT15001 only)

Remote Bass Ready - control bass level with included ZRBC (ZT15001 only)

High & Low Level Inputs - versatile connectivity to suit any install

Heavy Duty Connector Block - enables maximum current supply

4-Way Protected Circuit - protection against thermal damage, reversed power, speaker polarity and low voltage

24V

INTEGRATION

ZT6004 | 24V ZT-SERIES

600W 4 Channel 24V Class-D Amplifier

Power Ratings (RMS)

150W x 4 @ 2Ohm

100W x 4 @ 4Ohm

300W x 2 @ 4Ohm (bridged)

Class-D Technology

Frequency Response 20Hz – 20kHz

Signal to Noise Ratio >96dB

High & Low Pass Crossover 12dB per octave

Crossover Range 50Hz – 250Hz

Low-High Level Input Range 0.2V - 10V

Min Load Impedance 2Ohm stereo & 4Ohm bridged

Dimensions (L x W x H) 253 x 160 x 48mm

ZT15001 | 24V ZT-SERIES

1500W Monoblock 24V Class-D Amplifier

Power Ratings (RMS)

1500W x 1 @ 1Ohm

1100W x 1 @ 2Ohm

600W x 1 @ 4Ohm

Class-D Technology

Frequency Response 20Hz – 400Hz

Signal to Noise Ratio >96dB

High & Low Pass Crossover 24dB per octave

Crossover Range 50Hz – 250Hz

Subsonic Crossover Range 10Hz – 55Hz

Bass Boost @ 45Hz 0 to +18dB

Phase Control 0-180°

Low Level Input Range 0.2V - 10V

High Level Input Range 1V - 30V

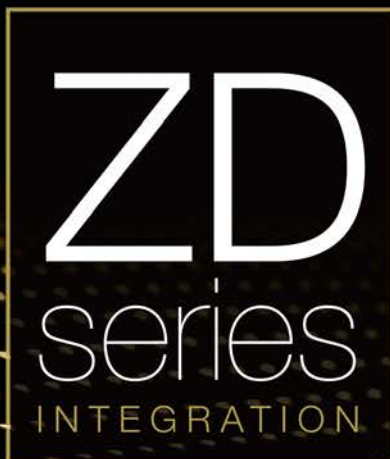
Min Load Impedance 1Ohm

Dimensions (L x W x H) 383 x 160 x 48mm

Includes Bass Controller (ZRBC)



24 VOLT // 24 VOLT // 24 VOLT // 24 VOLT // 24 VOLT // 24 VOLT



4-Channel Amplifier with 6-DSP Output Channels

The ZDA4.6 is a highly versatile Digital Signal Processor (DSP) with a built-in 4-Channel amplifier. The 6-channel DSP gives you all the features needed to create your perfect audio setup, such as fully adjustable filters, EQ with adjustable Q value and time correction.

This feature-packed amp does not end there; a built-in 4x60W RMS amplifier runs off channels 1-4 on the DSP, so you have complete control. If you want even more power, you can use the 6-channel RCA outputs that the DSP controls.

The ZDA4.6 will run on any source, connect the high-level input, which will be your source or use the RCA input. You can even add a BT module to the amp and get high-quality streaming and complete APP control through your iOS or Android device.

Also available is a remote-control unit that gives you volume, bass control, and memory recall. The remote will also give you a USB input in the front, which makes it easier to connect to a PC and allows you to do the tweaking in the front of the vehicle.

But it doesn't stop there; with the ISO-T harness that is available as an accessory, the ZDA4.6 becomes the perfect integration amp. It will take a high-level input from the car, pass it through the DSP and send it out from the internal amplifier to the speakers in the car, giving you the power and control you need.

If the power isn't enough, add a second amplifier, and you have the full functionality of the DSP to make the additional amp work as a SUB amp for even more power to your high-power speakers.



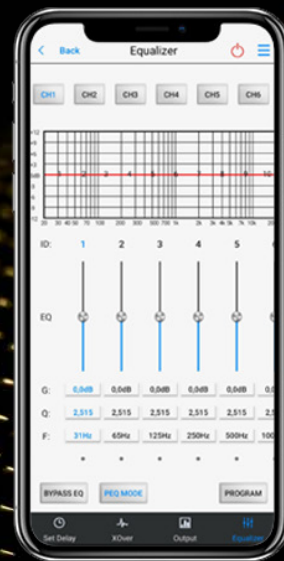
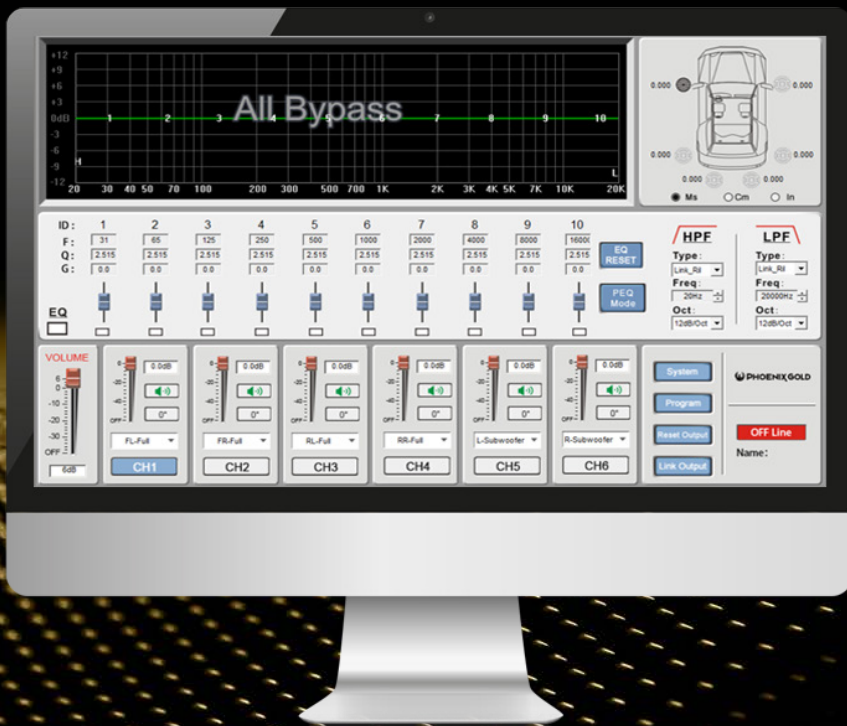
ZDA4.6 ZD-SERIES

4-Channel Amplifier with 6-Channel DSP

Class A/B DSP + Amplifier
 Power (MAX) 800W
 Power (RMS) with DSP Control 60W x 4 @ 4Ohm / 100 x 4 @ 2Ohm
 6-Channel DSP with 6 x RCA outputs
 HP & LP Filter 20Hz - 20kHz with 1/6 octave step
 Graphic or 10 band parametric EQ
 Time Alignment 20 milliseconds per channel (with 0.021 millisecond step)
 S/N Ratio 102dB
 Fully dedicated Android & iOS app for complete control
 PC software control via USB
 Autostart on high-level input
 Input Range 4V
 Dimensions (L x W x H) 266 x 150 x 45mm

Software Downloads

Our ZDA4.6 Amplifier has been designed with software that has been tuned to specific vehicles giving you the ultimate sound no matter what you are connecting to. Visit our website to find dedicated software files you can download to configure your DSP amplifier.



ZD-Series Accessories | For use with ZDA4.6

Visit our website for all 'plug-and-play' solutions, PhoenixGold-EU.com



ZDABT
ZD-SERIES

Bluetooth Interface

This interface gives you the ability to instantly transform the ZDA4.6 to a Bluetooth audio streaming amplifier allowing you to control your audio from any Bluetooth streaming device.



ZDACT
ZD-SERIES

Specialist controller

This controller gives you the ability to control volume and other pre-set functions from the front of the vehicle. It also features a USB port giving you the option to connect your PC in the front, without cables running through the car when making your DSP adjustments to the amplifier.



ZDAISOT
ZD-SERIES

ISO T-Harness

This plug-and-play, 220cm long harness is installed between the amp and vehicle, taking high-level input from the car and passing it through the DSP, sending it through the internal amplifier to the speakers.

ZDAIR104
ZD-SERIES

ISO-ISO 4-Channel in & out 100hm Resistor

ISO-ISO 100hm resistor
4-channels in
4-channels out

ZDAIR10
ZD-SERIES

ISO-ISO 2-Channel in & 4-Channel out 100hm Resistor

ISO-ISO 100hm resistor
2-channels in
4-channels out

ZDAUSB3EX
ZD-SERIES

USB3.0 - 3M Extension cable to ZDACT

3 Meter extension cable for use with the ZDACT specialist controller USB3.0

SUBWOOFERS, ACTIVE BOXES & ENCLOSURES



Z
series



ZR
series

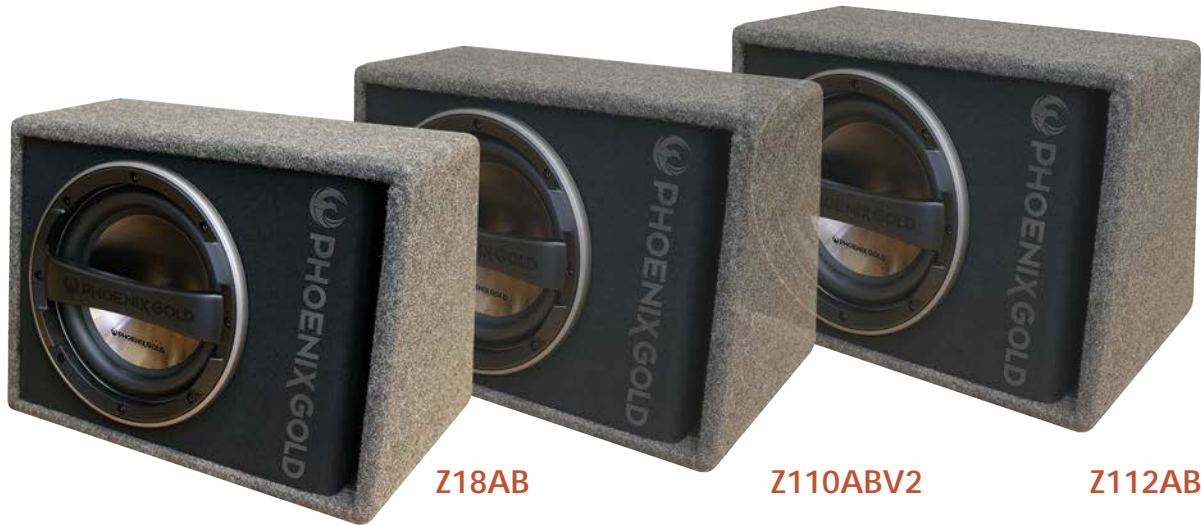


ZX
series



Z-Series Subwoofers & Enclosures | Features & benefits

Our Z-Series range has been engineered to deliver quality sound and first-rate aesthetics at an affordable price. Matching the performance aspects and design elements of selected enclosures and subwoofers, the monumental Z-Series product line looks as stunning as it sounds. No wonder it's our most popular global range to date.



Z18AB

Z110ABV2

Z112ABV2

COMPLETE WIRING KIT INCLUDED!

Z18AB, Z110ABV2, Z112ABV2 & Z212ABV2

Z18AB

Z-Series

8" Active Subwoofer Enclosure

500W Max Power

125W RMS

Built-in class A/B amplifier

Bass reflex tuning

High and low inputs

Precision constructed trapezium enclosure

Remote control and wiring kit included

(with power and signal cables)

Frequency Response 10Hz - 200Hz

Crossover Slope 6dB per Octave

Crossover Range 50Hz - 200Hz

Fuse 15A

Dimensions (L x W x H) 400 x 280 x 295mm



Z110ABV2

Z-Series

10" Active Subwoofer Enclosure

800W Max Power

200W RMS

Built-in class A/B amplifier

Bass reflex tuning

High and low inputs

Precision constructed trapezium enclosure

Remote control and wiring kit included

(with power and signal cables)

Frequency Response 10Hz - 200Hz

Crossover Slope 6dB per Octave

Crossover Range 50Hz - 200Hz

Fuse 15A

Dimensions (L x W x H) 476 x 331 x 343mm





Z112ABV2

Z-Series

12" Active Subwoofer Enclosure

1000W Max Power

250W RMS

Built-in class A/B amplifier

Bass reflex tuning

High and low inputs

Precision constructed trapezium enclosure

Remote control and wiring kit included

(with power and signal cables)

Frequency Response 10Hz - 200Hz

Crossover Slope 6dB per Octave

Crossover Range 50Hz - 200Hz

Fuse 15A

Dimensions (L x W x H) 560 x 394 x 384mm



Z212ABV2

Z-Series

12" Dual Active Subwoofer Enclosure Ventilated bass reflex housing

2000W Max Power

500W RMS

Bass reflex tuning

High and low inputs

Precision constructed trapezium enclosure

Remote control and wiring kit included

(with power and signal cables)

Built-in class A/B amplifier

Frequency Response 10Hz - 200Hz

Crossover Slope 6dB per Octave

Crossover Range 50Hz - 200Hz

Fuse 25A

Dual 2Ohm Voice Coil

Dimensions (L x W x H) 824 x 436 x 400mm



Z212PB
Z-Series

12" Dual Passive Subwoofer Enclosure

2000W Max Power
500W RMS

Frequency Response 10Hz – 200Hz
Low Pass Filter 50Hz – 200Hz
MDF Cabinet 18mm + 25mm port
Slot port design for maximum performance
Internal bracing
2Ohm @ terminal
Dimensions (L x W x H) 800 x 436 x 400mm

Heavy Duty Subwoofer Enclosures

- Ported enclosures
- MDF Cabinet 18mm (12mm in ZB18P)
- Stitched logo Phoenix Gold
- Slot port design for maximum performance
- Recessed mounting of speaker
- Internal bracing
- 1.5mm² pre-terminated speaker cable
- Heavy duty wood screws for woofer mounting included
- Recommended Subwoofers: ZMAX and Z-series



ZB18P
Z-Series

Empty 8" Ported Subwoofer Enclosure

Ported enclosure
Dimensions (L x W x H)
400 x 180/290 x 291mm



ZB112P
Z-Series

Empty 12" Ported Subwoofer Enclosure

Ported enclosure
Dimensions (L x W x H)
555 x 244/399 x 380mm



ZB212P
Z-Series

Empty 2x12" Ported Subwoofer Enclosure

Ported enclosure
Dimensions (L x W x H)
800 x 281.5/436 x 400mm

Z8S4

Z-Series

8" Subwoofer**450W Max Power****150W RMS**

Subwoofer size 8" (200mm)

Impedance 2 x 2Ohm

Resonance Frequency 39.9Hz

Mounting Depth 102mm

Mounting Diameter 182mm

**Z12D4**

Z-Series

12" Dual 4-Ohm Subwoofer**1600W Max Power****400W RMS**

2 x 4Ohm voice coils

40mm peak to peak excursion

2" High temp copper voice coils

Easy connect speaker terminals

Black anodized aluminium former

High roll rubber stitched surround

Optimised for sealed or vented enclosures

Long-throw spider suspension

Dual cone design

Mounting depth 6.26" / 159mm





Z880

Z-Series

8" Ultra Compact Active Subwoofer

240W Max Power

80W RMS

Autostart on high-level input

Remote Gain Controls

Aluminium Casing

Power & high-level cable quick connector

Frequency Response 20Hz – 150Hz

Bass Boost 0 to +12dB

Subsonic Filter fixed at 20Hz

Phase Control between 0 and 180°

Low-High Level Input Range 300mV to 1V

Dimensions (L x W x H) 290 x 210 x 70mm



Z8150V2

Z-Series

8" Slim Active Bass Enclosure

300W Max Power

150W RMS

Autostart on high-level input

RCA low/high-level inputs

Remote subwoofer level controller included

Built-in Thermal, Overload and Short Protection

Power & high-level cable quick connector

Frequency Response 20Hz – 150Hz

Bass Boost @ 45Hz 0 to +18dB

Subsonic Filter 20Hz – 50Hz

Phase Control between 0 and 180°

Low-High Level Input Range 110mV to 0.5V

Dimensions (L x W x H) 345 x 250 x 68mm



POWERFUL

10" COMPACT SUBWOOFER

ZR

series

ZR10P

ZR-Series

400W Max Power, Rugged Underseat Subwoofer

The ZR10P is a 10-inch powerful compact subwoofer suitable for a variety of different vehicles. This powerful subwoofer will enhance your audio experience with pounding bass thanks to its 200W RMS (400W Max) output along with its 0-12db variable bass boost.

The compact size of the sub is teamed with a durable aluminium casing to provide a strong rugged unit that can be installed in a variety of different locations including under vehicle seats to retain the interior space of a vehicle.

ZR10P Specification

400W Max Power 200W RMS

THD <0.5%

Fuse Rating 25A

Subsonic Filter 20Hz

Bass Boost 0 to 12dB

Low Pass Filter 50Hz – 150Hz

Signal-To-Noise Ratio >90dB

Frequency Response 20Hz – 150Hz

Input Sensitivity (High Level) 1.0V

Input Sensitivity (Low Level) 300mV

Dimensions (L x W x H) 340 x 245 x 78mm





ZMAX82
ZR-Series

High SPL 8" Subwoofer

- 1500W Max Power
- 500W RMS
- HIGH Power SPL Subwoofer
- 2.5" Voice coil
- Push terminals for easy and secure connection
- Stitched surround
- High roll surround for massive Mechanical – XMAX
- Super-strong 100oz magnet
- Hi-Grade quality triple stacked

Product of the Year 2023 - Subwoofer Series
Car & HiFi Magazine



**HIGH POWER
SPL SUBWOOFERS**

4500W
MAX POWER



ZMAX122
ZR-Series

High SPL 12" Subwoofer

- 4500W Max Power
- 1500W RMS
- HIGH Power SPL Subwoofer
- 3" Voice coil
- Push terminals for easy and secure connection
- Stitched surround
- High roll surround for massive Mechanical – XMAX
- Super-strong 195oz magnet
- Hi-Grade quality triple stacked

Product of the Year 2023 - Subwoofer Series
Car & HiFi Magazine



**ZMAX18PB**

ZR-Series

High SPL 8" Subwoofer in a Ported Box**1500W Max Power****500W RMS**

HIGH Power SPL Subwoofer

2.5" Voice coil

Push terminals for easy and secure connection

Stitched surround

High roll surround for massive Mechanical – XMAX

Super-strong 100oz magnet

Hi-Grade quality triple stacked

16mm MDF carpeted box

Product of the Year 2023 - Subwoofer Series
Car & HiFi Magazine**ZONE122**

ZR-Series

LIMITED EDITION**12" ZONE Subwoofer****6000W Max Power****2000W RMS**

HIGH Power SPL Subwoofer

Subwoofer size 12" (300mm)

Impedance 2 x 2Ohm

Resonance Frequency 33.94Hz

Mounting depth 192mm

Mounting diameter 287.5mm

ZX18PBS

ZX-Series

8" Slim Passive Subwoofer Box

400W Max Power

200W RMS

Subwoofer size 8" (200mm)

Sensitivity 88dB (1W/1m)

Sealed enclosure

Impedance 4Ohm

Dimensions (L x W x H)

489 x 306.6 x 124.8mm



ZX210PBS

ZX-Series

2 x 10" Slim Passive Subwoofer Box

700W Max Power

350W RMS

2 x 10" Enclosure

Sealed enclosure

Passive radiator

Impedance 2Ohm

Dimensions (L x W x H) 650 x 320 x 140mm



SPEAKERS & TWEETERS

Z
series



ZX
series



ZR
series



ZP
series



ZD
series



Z-Series Speakers | Features & benefits

The Z-Series speaker range features flush profile tweeters and a compact basket design for easy installation. High quality polypropylene cone material for great sounding audio. Quality butyl rubber surround for excellent durability and prolonged performance. Ferrofluid tweeters enable enhanced thermal contact for increased reliability and optimum damping for the voice coils.



Z4CX
Z-Series
4"/100mm 40hm Coaxial Speakers

120W PEAK
30W RMS

Mounting Depth
43mm
Mounting Diameter
103 mm



Z46CX
Z-Series
4" x 6"/100 x 152mm 40hm Coaxial Speakers

120W PEAK
30W RMS

Mounting Depth
50mm
Mounting Diameter
142mm x 89mm



Z5CX
Z-Series
5.25"/130mm 40hm Coaxial Speakers

140W PEAK
35W RMS

Mounting Depth
44mm
Mounting Diameter
118mm



Z57CX
Z-Series
5" x 7"/127 x 178mm 40hm Coaxial Speakers

140W PEAK
35W RMS

Mounting Depth
56mm
Mounting Diameter
181mm x 128mm

**Z65CX**

Z-Series

6.5"/165mm 4Ohm Coaxial Speakers**160W PEAK****40W RMS****Mounting Depth**

46mm

Mounting Diameter

126mm

**Z69CX**

Z-Series

6" x 9"/152 x 228mm 3-Way 4Ohm Coaxial Speakers**220W PEAK****55W RMS****Mounting Depth**

70mm

Mounting Diameter

155mm x 222mm

Component Speakers

Shallow mount design with compact basket design for easy installation

High quality polypropylene cone material for great sounding audio

Space-saving internal crossover separates audio frequencies, creating a more realistic sound experience

Quality butyl rubber surround for excellent durability and prolonged performance

Ferofluid tweeters enable enhanced thermal contact for increased reliability and optimum damping for the voice coils

**Z5CS**

Z-Series

5.25"/130mm 4Ohm Component Speaker Kit**140W PEAK****35W RMS****Mounting Depth** - 45mm, Tweeter 20mm**Mounting Diameter** - 118mm, Tweeter 47mm**Z65CS**

Z-Series

6.5"/165mm 4Ohm Component Speaker Kit**160W PEAK****40W RMS****Mounting Depth** - 46mm, Tweeter 20mm**Mounting Diameter** - 126mm, Tweeter 47mm

ZX series

ZX-Series High Performance Speakers | Features & benefits

The ZX Series of speakers and tweeters offer high power and sound quality whilst maintaining the premium details audiophiles have come to love. These speakers are certain to not disappoint enthusiasts that want to play loud and retain the same premium sound as they would at lower levels. The 6.5 inch speaker with an aluminium cone is designed to be as stiff as possible yet remain resonance free, offering extreme performance for money, it's a real eye opener for the audio industry.



ZX653CS

ZX-Series

3-Way Component Speakers

200W Peak
100W RMS

Combines 6.5" Midrange Woofers, 3.5" Midrange Speakers and 1" Tweeters
Tweeter level adjustment (0dB, -2dB)
12dB High pass filter at 4000Hz for tweeter
6dB Bandpass filter at 350/4000Hz for midrange speaker
6dB Low pass filter at 350Hz for woofer



ZX65CS

ZX-Series

2-Way Component Speakers

160W Peak
80W RMS

Combines 6.5" Midrange Woofers with 1" Tweeters

Tweeter level adjustment (0dB, -2dB)

12dB High pass filter at 4000Hz for tweeter
6dB Low pass filter at 4000Hz for woofer

COMPONENT SYSTEMS RE-INVENTED

Make your own system with endless possibilities



ZX1TC

ZX-Series

1" / 25mm Soft-Dome Tweeter with Filter

40W PEAK

20W RMS

Sensitivity 91dB 1W/1m

Neodymium magnet

Tweeter level adjustment (0dB, -2dB)

12dB High pass filter at 4000Hz for tweeter (for use in 2-Way or 3-Way system)

Diameter 25mm

Tweeter Depth 20mm

Housing Depth 39mm



ZX35C

ZX-Series

3,5" / 89mm Midrange Speaker with HP/LP Filter

40W PEAK

20W RMS

Sensitivity 86dB 1W/1m

Paper cone with rubber surround

Ferrite magnet

Voice-coil (diameter) 20.4mm

6dB Bandpass filter at 350/4000Hz for midrange speaker (for use in 3-Way system)

6dB High pass filter at 350Hz (for use in 2-Way system)

Diameter 90mm

Depth 40mm



ZX65C

ZX-Series

6.5" / 165mm 2-Way Midrange Woofer with LP Filter

120W PEAK

60W RMS

Sensitivity 89dB 1W/1m

Ferrite magnet

Voice coil (diameter) 25mm

Polypropylene cone with rubber surround

6dB Filter at 350Hz for woofer (for use in 2-Way system)

Diameter 165mm

Depth 70mm



ZX65CX

ZX-Series

6.5" / 165mm 2-Way Coaxial with separate Filters and connectors

160W PEAK

80W RMS

Sensitivity 89dB 1W/1m

Soft dome 25mm tweeter

Voice coil (diameter) 25mm

Polypropylene cone with rubber surround

12dB Filter at 5kHz

Diameter 165mm

Depth 70mm

ZR series

ZR-Series Component Speakers | Features & benefits

High power sound with very high quality and details. This is the essence of Phoenix Gold power and sonic performance. This system will not disappoint audiophiles or people that want to play loud at the same time. The 6,5" speaker has an anodized aluminium cone with special treatment to be as stiff as possible but resonance-free.

Top Class
 ★ ★ ★ ★ ★
CAR & HiFi
 INTERNATIONAL Germany 3/22
 Price/performance: very good
 „High-output speakers,
 also for sound enthusiasts.“



ZR65CS

ZR-Series

6.5" / 165mm High Power Component Speakers

300W PEAK
100W RMS

6.5" / 165 mm Speakers: Black anodized aluminium cone
 1" / 25mm Tweeter. Silk dome tweeter with copper rings
 Powder-coated steel basket for maximum stiffness and
 resonance-free sound

Impedance: 4Ohm

Frequency range: 50Hz – 20,000Hz

Sensitivity: 88dB (1W/1m)

Filter design: 12/12dB slope (LP/HP)

Crossover point): 4500Hz

Adjustable tweeter level: 0db and -3dB



ZP

series



ZPROB654

ZP-Series

1520W Pro Full Range Speaker Box

Features four 6.5" Speakers and two 3.6" Tweeters

1520W PEAK

760W RMS

Impedance 4Ohm

Frequency 150Hz - 20kHz

Dimensions (L x W x H) 248 x 900 x 160mm



ZP - SPL tweeters and speakers



ZPRO36

ZP-Series

3.6" / 95mm Pro Audio Bullet Tweeters

225W PEAK

75W RMS

Aluminium diaphragm

Cast aluminium chassis

2kHz - 20kHz Frequency response

Sensitivity 102db 1W/1m

25mm Voice coil

Crossovers included

Impedance 4Ohm

Mounting depth 37mm

Mounting diameter 72mm



ZPRO654

ZP-Series

6.5" / 165mm Pro Audio Midrange Speakers

300W PEAK

150W RMS

Composite woofer cone

Dual roll cloth surround

70Hz - 10kHz Frequency response

Sensitivity 89.8dB 1W/1m

Impedance 4Ohm

Mounting depth 73mm

Mounting diameter 144mm

NEW ZPX - Performance SPL speakers



ZPX654
ZP-Series

6.5" / 165mm Pro Audio Midrange

- 400W PEAK
- 200W RMS
- 1.5" OFC High Tech Voice Coil
- 20oz Ferrite magnet
- Lightweight paper cone
- Triple roll cloth surround
- Woven tinsel leads
- Spade terminal
- Stamped EVA gasket



ZPX84
ZP-Series

8" / 203mm Pro Audio Midrange

- 450W PEAK
- 225W RMS
- 1.5" OFC High Tech Voice Coil
- 20oz Ferrite magnet
- Lightweight paper cone
- Triple roll cloth surround
- Woven tinsel leads
- Spade terminal
- Stamped EVA gasket

NEW ZPR - XTREME SPL tweeters and speakers



ZPROR25T
ZP-Series

**1" / 25mm Titanium
Pro Audio Tweeters**

- 200W PEAK
- 100W RMS
- Sensitivity 105dB
- Frequency range 3.5kHz-20kHz
- Titanium diaphragm
- Crossovers included
- DC Resistance 4Ohm
- Mounting diameter 25mm
- Mounting depth 69mm



ZPR654
ZP-Series

**6.5" / 165mm
Pro Audio Midrange**

- 600W PEAK
- 300W RMS
- 2" OFC High Tech Voice Coil
- 34oz Ferrite magnet
- Lightweight paper cone
- Dual roll cloth surround
- Woven tinsel leads
- Spade terminal
- Stamped EVA gasket



ZPR84
ZP-Series

**8" / 203mm
Pro Audio Midrange**

- 650W PEAK
- 325W RMS
- 2" OFC High Tech Voice Coil
- 34oz Ferrite magnet
- Lightweight paper cone
- Dual roll cloth surround
- Woven tinsel leads
- Spade terminal
- Stamped EVA gasket

ZD

series
INTEGRATION

VEHICLE SPECIFIC PREMIUM AUDIO UPGRADES

BMW . FORD . FIAT . ISUZU . NISSAN . TOYOTA . SCANIA . VAUXHALL/OPEL . VOLKSWAGEN . VOLVO

The ZD-Series is all about plug-and-play solutions, speakers and amplifiers that fit straight into the factory location with no modification necessary. With the addition of the ZDA4.6 4-channel Amplifier and Digital Signal Processor these speakers provide a substantial upgrade over the factory output presenting audio enthusiasts with the pure sound and adjustability they demand without the hassle of completely altering their interior to get that perfect fitment.

Visit PhoenixGold-EU.com For a full updated product list and supported vehicle applications



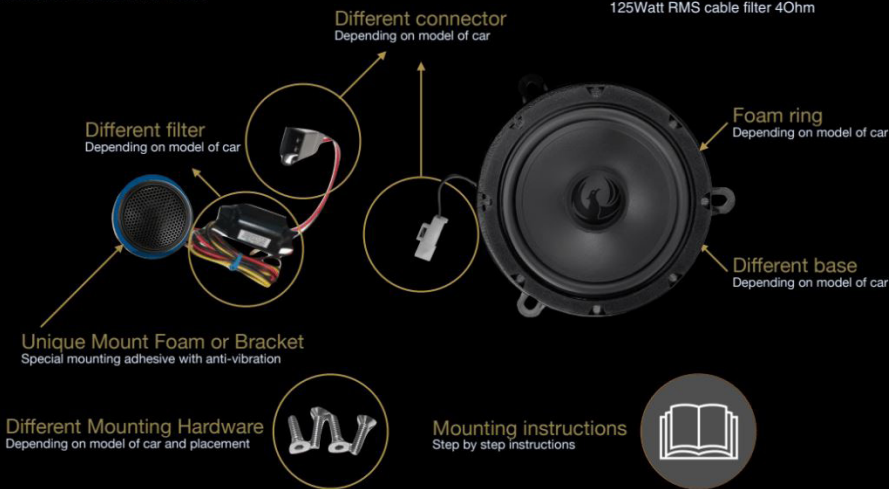
ZX1TC

125Watt RMS built in filter 40hm

ZX65C

Modular speaker

125Watt RMS cable filter 40hm



ZDSB100CS

ZD-Series

BMW

BMW 4" 2-Way Speakers
various models 2004 - Up

120W PEAK
60W RMS

- Filter 12dB
- Magnet Neodymium
- Speaker Material Sandwich
- Composite Cone
- 1" /25mm Silk Dome Tweeter
- Tweeter Material Silk
- Car specific plug-and-play connector



ZDSB200

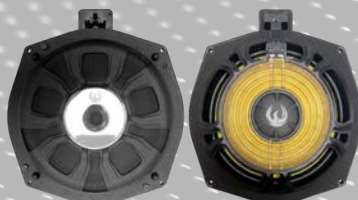
ZD-Series

BMW

BMW 8" Subwoofer
various models 2004 - Up

150W PEAK
75W RMS

- Nominal Impedance 3.6Ohm
- Voice Coil 2" /50mm
- Basket Material Aluminium/Plastic
- Speaker Material Sandwich
- Composite Cone
- Speaker Surround Rubber
- Magnet Neodymium(N35)
- Car specific plug-and-play connector



ZDSB200S

ZD-Series

BMW

BMW 8" Subwoofer slim
mounting depth

various models 2004 - Up
150W PEAK
75W RMS

- Nominal Impedance 3.6Ohm
- Voice Coil 2" /50mm
- Basket Material Aluminium/Plastic
- Speaker Material Sandwich
- Composite Cone
- Speaker Surround Rubber
- Magnet Neodymium (N35)
- Car specific plug-and-play connector



ZDSKB1

ZD-Series

BMW

BMW 3-Way system front kit system
various models 2004 - Up

270W PEAK
135W RMS

- The ZDSKB1 BMW 3-Way front kit system combines the ZDSB200S 8" Subwoofer with the ZDSB100CS making it the perfect plug-and-play solution for your BMW



ZDSKF1

ZD-Series

FORD

Ford 2-Way 6.5" Speaker kit
various models 2006 - Up

160W PEAK
80W RMS

- 12dB highpass (4000Hz) / 6dB lowpass (4000Hz)
- Polypropylene cone with rubber surround
- 1" (25mm) Soft dome tweeter
- Neodymium magnet
- Car specific plug-and-play connector



ZDSKFO1

ZD-Series

FIAT, VAUXHALL, OPEL

Fiat, Vauxhall & Opel 2-Way 6.5" Speaker kit
various models 2006 - Up

160W PEAK
80W RMS

- 12dB highpass (4000Hz) / 6dB lowpass (4000Hz)
- Polypropylene cone with rubber surround
- 1" (25mm) Soft dome tweeter
- Neodymium magnet
- Car specific plug-and-play connector



ZDSKI1

ZD-Series

ISUZU

Isuzu 2-Way 6.5" Front door speaker kit
D-MAX 2012 - Up

160W PEAK
80W RMS

- 12dB highpass (4000Hz) / 6dB lowpass (4000Hz)
- Polypropylene cone with rubber surround
- 1" (25mm) Soft dome tweeter
- Neodymium magnet
- Car specific plug-and-play connector



ZDSKI2

ZD-Series

Isuzu 2-Way 6.5" Rear door coaxial speaker kit

D-MAX 2012 - Up

100W PEAK

50W RMS

19mm Mylar Balanced Dome Tweeter
Anti-Resonant Steel Basket
High Temperature CAE/CAD Motor Structure
Triple Laminated, Ultra Stiff and Light Cone
UV Treated Foam Surround

ISUZU



ZDSKN1

ZD-Series

Nissan 2-Way 6.5" speaker kit including special filters

various models 2003 - Up

160W PEAK

80W RMS

12dB highpass (4000Hz) / 6dB lowpass (4000Hz)
Polypropylene cone with rubber surround
1" (25mm) Soft dome tweeter
Neodymium magnet
Car specific plug-and-play connector

NISSAN



ZDSKN2

ZD-Series

Nissan 6.5" coaxial speaker kit various models 2003 - Up

100W PEAK

50W RMS

0.74" (19mm) Mylar Balanced Dome Tweeter
Anti-Resonant Steel Basket
High Temperature CAE/CAD Motor Structure
Triple Laminated, Ultra Stiff and Light Cone
UV Treated Foam Surround
Car specific plug-and-play connector

NISSAN



ZDST6CS

ZD-Series

Toyota 6.5" 2-Way component speakers

various models 1997 - Up

180W PEAK

90W RMS

Y30 Ferrite Magnet Rubber Surround
25mm Silk Dome Tweeter
6dB Crossover
Car specific plug-and-play connector

TOYOTA



ZDST6CX

ZD-Series

Toyota 6.5" 2-Way coaxial speaker kit

various models 1997 - Up

180W PEAK

90W RMS

Crossover Filter 6dB
Magnet Neodymium (Tweeter)
Ferrite (Speaker)
Speaker Material Composite Paper Cone
Tweeter Material Silk
Car specific plug-and-play connector

TOYOTA



ZDSW6CS

ZD-Series

VW 6" / 150mm 2-Way component Speakers

various models 2012 - Up

120W PEAK

60W RMS

Filter: 12dB
Magnet Neodymium (Tweeter)
Ferrite (Speaker)
Speaker Material Composite Paper Cone
Tweeter Material Silk
Car specific plug-and-play connector

VOLKSWAGEN



ZDSW7CS

ZD-Series

VW 7" / 175mm 2-Way component Speaker

various models 2012 - Up

180W PEAK

90W RMS

Crossover Filter 6dB
Magnet Neodymium (Tweeter)
Ferrite (Speaker)
Speaker Material Composite Paper Cone
Tweeter Material Silk
Car specific plug-and-play connector

VOLKSWAGEN



STAY UP TO DATE WITH ALL OF OUR SOLUTIONS
PHOENIXGOLD-EU.COM





ZDSV25T

ZD-Series

Volvo 1" /25mm Tweeter

**40W PEAK
20W RMS**

Silk Dome Tweeter
Basket Plastic
Magnet Neodymium
Car specific plug-and-play connector

VOLVO



ZDSV4C

ZD-Series

Volvo 4" Midrange Speaker

**60W PEAK
30W RMS**

1" Voice Coil
Rubber Surround
Neodymium Motor
Car specific plug-and-play connector

VOLVO



ZDSV6C

ZD-Series

Volvo 6.5" Midbass Speaker

**100W PEAK
50W RMS**

13Oz Ferrite Magnet
Rubber Surround
Neodymium Motor
Car specific plug-and-play connector

VOLVO



ZDSV1

ZD-Series

Volvo 3-Way front kit system including special filters various models 2016 - Up

**200W PEAK
100W RMS**

The ZDSV1 Volvo 3-Way front kit system combines the ZDSV25T 1" Tweeter with the ZDSV4C 4" midrange speaker and the ZDSV6C 6.5" midbass speaker with plug-and-play connectors

VOLVO



ZDSV2

ZD-Series

Volvo 2-Way rear kit system including filters & Y-Cable various models 2016 - Up

**160W PEAK
80W RMS**

The ZDSV2 Volvo 2-Way front kit system combines the ZDSV25T 1" Tweeter with the ZDSV6C 6.5" midbass speaker with plug-and-play connectors

VOLVO



ZDSKV3

ZD-Series

Volvo 2-Way 6,5" kit system including special filters various models 2004 - 2017

**160W PEAK
80W RMS**

12dB highpass (4000Hz) / 6dB lowpass (4000Hz)
Polypropylene cone with rubber surround
1" (25mm) Soft dome tweeter
Neodymium magnet
Car specific plug-and-play connector

VOLVO



ZTSV65

ZT-Series

**Volvo 6.5" Midrange Speaker
Volvo FH & FM Trucks 2013 - Up
160W PEAK
80W RMS**

Sensitivity 89dB 1W/1m
25mm Voice-coil
Ferrite magnet
Powder-coated steel basket
9cm Spider
Soft dome dustcap
6dB Cable filter at 4000Hz

VOLVO TRUCKS

**1" /25mm Tweeter
40W PEAK
20W RMS**

Sensitivity 91 dB 1W/1m
Magnet Neodymium
12 dB Cable filter
2 level settings 0, -2dB
20mm Mounting depth



ZTSS57

ZT-Series

**Scania 5" x 7" Speaker kit system
Scania R-Series trucks 2004 - 2016
150W PEAK
100W RMS**

Frequency Response 67Hz - 20kHz
Impedance 4Ohm
Sensitivity 90dB 1W/1m
Surround Material Rubber Surround
Tweeter Size 19mm
Tweeter Material Silk
Magnet diameter 80 x 12mm
Magnet Weight 226g
Vehicle specific plug-and-play connector

SCANIA

ZD series

ZD-SERIES DSP POWER UP SOLUTIONS

These kits are made for plug-and-play installation into a specific vehicle. The kits contain a DSP Amplifier and plug-and-play harnesses that plug straight into the vehicle without cutting or adapting the original cable harness.

The kits also include step-by-step installations instructions and DSP settings file for the best sound performance in the car.

These kits can be used with original speakers or with our Phoenix Gold plug-and-play speaker kits. Please refer to our vehicle finder on our website for the latest model upgrades.





DSP

ZD-Series DSP Power Up Solutions

Vehicle Applications - Visit the website for more information

ZDAPB1

BMW 2003-2019

- BMW 1-Series 2007 - 2019
- BMW 2-Series 2015 - Up
- BMW 3-Series 1998 - 2019
- BMW 4-Series 2013 - 2020
- BMW 5-Series 2003 - 2019
- BMW 6-Series 2003 - 2019
- BMW i3 2013 - 2022
- BMW i8 2014 - 2020
- BMW M2 (F87) 2015 - 2022
- BMW X1 2009 - 2022
- BMW X2 2018 - Up
- BMW X3 2004 - 2019
- BMW X4 2014 - 2019
- BMW X5 2006 - 2018
- BMW X6 2008 - 2014
- BMW Z4 2002 - 2018

ZDAPCH1

Chrysler/Dodge/Jeep 2007 - 2017

- Chrysler 200 (I) 2011 - 2014
- Chrysler 300 2008 - 2010
- Chrysler 300C 2008 - 2010
- Chrysler Aspen 2007 - 2009
- Chrysler Grand-Voyager (V) 2008 - 2016
- Chrysler Sebring (III) 2007 - 2010
- Chrysler Town and Contry (V) 2008 - 2016
- Dodge Avenger 2007 - 2014
- Dodge Caliber 2009 - 2012
- Dodge Challenger 2008 - 2015
- Dodge Charger 2008 - 2021
- Dodge Dakota 2008 - 2011
- Dodge Durango 2007 - 2009
- Dodge Grand-Caravan 2008 - 2015
- Dodge Journey 2008 - 2010
- Dodge Magnum 2008 - 2008
- Dodge Nitro 2007 - 2012
- Dodge Ram 2009 - 2013
- Jeep Cherokee (KK) 2008 - 2013
- Jeep Commander (XK) 2006 - 2010
- Jeep Compass 2011 - 2017
- Jeep Grand-Cherokee 2008 - 2013
- Jeep Liberty 2008 - 2012
- Jeep Patriot 2009 - 2017
- Jeep Wrangler 2006 - 2017

ZDAPFT1

Fiat 2012-Up

- Fiat 500 2012 - Up
- Fiat 500L 2012 - Up
- Fiat 500X 2012 - Up
- Fiat Doblo 2015 - Up
- Fiat Ducato 2012 - Up
- Fiat Freemont 2011 - 2016
- Fiat Tipo 2016 - Up

ZDAPF1

Ford 2018-Up

- Ford Eco Sport (II) 2020 - Up
- Ford Fiesta (VIII) 2017 - Up
- Ford Focus (IV) 2018 - Up
- Ford Tourneo 2018 - Up
- Ford Transit 2018 - Up

ZDAPF3

Ford 2010 - Up

- Ford B-Max 2012 - Up
- Ford C-Max (II) 2010 - Up
- Ford Eco Sport (II) 2012 - 2019
- Ford Edge (II) 2015 - Up
- Ford Focus (III) 2010 - 2018
- Ford Galaxy (III) 2015 - Up
- Ford Ka+ 2016 - Up
- Ford Kuga (II) 2012 - 2019
- Ford Kuga (III) 2019 - Up
- Ford Mondeo (V) 2015 - Up
- Ford Mustang (VI) 2014 - Up
- Ford Ranger 2012 - Up
- Ford S-Max (II) 2015 - 2019
- Ford S-Max (II) (Facelift) 2019 - Up
- Ford Tourneo Custom 2012 - 2018
- Ford Tourneo Courier 2014 - Up
- Ford Transit Connect (II) 2014 - Up
- Ford Transit Custom 2012 - Up
- Ford Transit (VII) 2014 - Up
- Ford Transit Courier 2014 - Up

ZDAPGM1

Chevrolet/Opel 2009 - 2019

- Cadillac**
- Cadillac CTS 2008 - 2013
- Chevrolet**
- Chevrolet Aveo 2012 - Up
- Chevrolet Camaro 2009 - 2015
- Chevrolet Cruze 2009 - 2015
- Chevrolet Equinox 2009 - 2018
- Chevrolet Orlando 2011 - 2018
- Chevrolet Sonic 2012 - 2020
- Chevrolet Spark 2013 - 2021
- Chevrolet Trax 2013 - 2017
- Opel**
- Opel Adam 2013 - 2019
- Opel Astra J 2010 - 2015
- Opel Cascada 2013 - 2019
- Opel Combo D 2012 - 2018
- Opel Corsa E 2014 - 2019
- Opel Insignia 2008 - 2013
- Opel Meriva B 2010 - 2017
- Opel Mokka 2012 - 2016
- Opel Zafira C 2011 - 2019
- Opel Zafira Tourer 2011 - 2019

ZDAPH1

Honda 2008 - 2017

- Honda Accord 2008 - 2017
- Honda Civic 2011 - 2016
- Honda CR-V 2013 - 2017
- Honda Fit 2008 - 2015
- Honda Freed 2008 - 2016
- Honda Insight 2009 - 2015
- Honda Jazz 2008 - 2015
- Honda Mobilio 2014 - Up
- Honda Odyssey 2008 - Up
- Honda Pilot 2008 - 2015
- Honda Ridgeline 2009 - 2014

ZDAP1

Isuzu 1993 - Up

- Honda Passport 1996 - 2002
- Isuzu Amigo 1998 - 2000
- Isuzu Coloradio 2012 - Up
- Isuzu D-Max 2006 - Up
- Isuzu MU-X 2013 - Up
- Isuzu Panther 2000 - 2020
- Isuzu Rodeo 1993 - 2004
- Isuzu Trooper 1993 - 2002
- Isuzu VehiCROSS 1999 - 2001

ZDAPM1

Mazda 1998 - Up

- Mazda 323 2000 - 2003
- Mazda 626 2000 - 2002
- Mazda BT50 2006 - Up
- Mazda CX-5 (I) 2012 - 2017
- Mazda CX-7 2006 - 2012
- Mazda CX-9 2007 - Up
- Mazda Demio 2001 - 2007
- Mazda Mazda 2 2003 - Up
- Mazda Mazda 3 2003 - Up
- Mazda Mazda 5 2005 - 2010
- Mazda Mazda 6 2002 - Up
- Mazda MPV 2001 - 2006
- Mazda MX-5 1998 - Up
- Mazda Premacy 2001 - 2004
- Mazda RX-8 2003 - 2008
- Mazda Tribute 2001 - 2008

ZDAPMB1

Mercedes 1997 - 2020

- Mercedes A-Class 1997 - 2018
- Mercedes B-Class 2005 - 2018
- Mercedes C-Class 2000 - Up
- Mercedes CL 1999 - 2013
- Mercedes CLA 2013 - 2018
- Mercedes CLK 2002 - 2010
- Mercedes CLS 2004 - 2018
- Mercedes E-Class 2002 - 2020
- Mercedes G-Class 2007 - 2018
- Mercedes GLA 2013 - 2019
- Mercedes GLC 2015 - 2019
- Mercedes GLE 2015 - 2019
- Mercedes GLK 2008 - 2015
- Mercedes ML 2005 - 2015
- Mercedes R-Class 2005 - 2017
- Mercedes S-Class 2005 - Up
- Mercedes SL 2001 - 2004
- Mercedes SL 2012 - Up
- Mercedes SLK 2004 - Up
- Mercedes Sprinter 2006 - 2018
- Mercedes Viano 2003 - 2014
- Mercedes Vito 2003 - 2019
- Mercedes X-Class 2017 - Up

ZDAPN1

Nissan 2003 - Up

- Nissan Almera 2003 - 2006
- Nissan Altima 2005 - Up
- Nissan Cube 2008 - Up
- Nissan GTR 2007 - Up
- Nissan Juke 2010 - Up
- Nissan Kubistar 2009 - Up
- Nissan Leaf 2010 - Up
- Nissan Maxima 2008 - Up
- Nissan Micra 2010 - Up
- Nissan Murano 2008 - Up
- Nissan Navara 2005 - Up
- Nissan Note 2005 - Up
- Nissan NV 200 2009 - Up
- Nissan Pathfinder 2004 - Up
- Nissan Patrol 2010 - Up
- Nissan Qashqai 2006 - 2013
- Nissan Quest 2011 - Up
- Nissan Sentra 2007 - Up
- Nissan Serena 2005 - Up
- Nissan Skyline 2006 - 2008
- Nissan Teana 2008 - Up
- Nissan Tiida 2004 - Up
- Nissan Titan 2004 - Up
- Nissan X-Trail 2007 - Up
- Nissan Xterra 2005 - Up

ZDAPT1

Toyota 2000 - 2018

- Toyota 4-Runner 2002 - Up
- Toyota Auris 2006 - 2019
- Toyota Avensis 2003 - 2018
- Toyota Aygo 2005 - 2018
- Toyota C-HR 2016 - 2018
- Toyota Camry 2001 - 2017
- Toyota Corolla 2001 - 2018
- Toyota Corolla Verso 2004 - 2009
- Toyota GT86 2012 - 2016
- Toyota FJ Cruiser 2006 - 2015
- Toyota Fortuner 2004 - 2015
- Toyota Hilux 2005 - 2020
- Toyota Highlander 2000 - 2007
- Toyota iQ 2008 - 2015
- Toyota Land Cruiser 1998 - 2014
- Toyota Mirai 2015 - Up
- Toyota Previa 1992 - 2019
- Toyota Prius 2000 - 2018
- Toyota Prius + 2009 - 2016
- Toyota RAV4 2000 - 2018
- Toyota Sienna 1997 - 2003
- Toyota Tacoma 1995 - 2004
- Toyota Tundra 2000 - 2006
- Toyota Urban Cruiser 2007 - 2014
- Toyota Verso 2009 - 2018
- Toyota Verso S 2010 - 2015
- Toyota Yaris 1999 - 2018

ZDAPT2

Toyota 2018 - Up

- Toyota Aygo 2018 - Up
- Toyota C-HR 2019 - Up
- Toyota Camry 2017 - Up
- Toyota Corolla 2018 - Up
- Toyota GT86 2016 - Up
- Toyota Prius 2018 - Up
- Toyota Rav4 2019 - Up
- Toyota Yaris 2018 - Up

ZDAPV1

Volvo 2018 - Up

- Volvo S60 2019 - Up
- Volvo S90 2017 - Up
- Volvo V60 2019 - Up
- Volvo S90 2017 - Up
- Volvo XC40 2018 - Up
- Volvo XC60 2018 - Up
- Volvo XC90 2016 - Up

ZDAPV2

Volvo 2004 - 2018 (with OEM amplifier)

- Volvo C30 2006 - 2013
- Volvo C70 2006 - 2013
- Volvo S40 2004 - 2012
- Volvo S60 2011 - 2018
- Volvo S80 2006 - 2016
- Volvo V40 2012 - 2019

ZDAPV2

Continued

- Volvo V50 2004 - 2012
- Volvo V60 2010 - 2017
- Volvo V70 2008 - 2016
- Volvo XC60 2009 - 2017
- Volvo XC70 2008 - 2017
- Volvo XC90 2007 - 2014

ZDAPV3

Volvo 2004 - 2018 (without OEM amplifier)

- Volvo C30 2006 - 2013
- Volvo C70 2006 - 2013
- Volvo S40 2004 - 2012
- Volvo S60 2011 - 2018
- Volvo S80 2006 - 2016
- Volvo V40 2012 - 2019
- Volvo V50 2004 - 2012
- Volvo V60 2010 - 2017
- Volvo V70 2008 - 2016
- Volvo XC60 2009 - 2017
- Volvo XC70 2008 - 2017
- Volvo XC90 2007 - 2014

ZDAPVW1

Audi/Seat/Volkswagen 2010 - Up

- Audi**
- Audi A1 (8X) 2010 - 2018
- Audi A3 2012 - Up
- Audi A4 2007 - Up
- Audi A5 2007 - Up
- Audi A6 (C8) 2018 - Up
- Audi A7 (4K8) 2018 - Up
- Audi Q2 (GA) 2016 - Up
- Audi Q3 2011 - Up
- Audi Q5 2008 - Up
- Seat**
- Seat Alhambra (II) 2016 - Up
- Seat Arona 2017 - Up
- Seat Ateca 2016 - Up
- Seat Ibiza 2017 - Up
- Seat Leon 2012 - Up
- Seat Toledo 2012 - Up
- Volkswagen**
- VW Amarok 2016 - Up
- VW Arteon 2017 - Up
- VW Beetle 2016 - Up
- VW Caddy 2015 - Up
- VW Crafter (II) 2017 - Up
- VW Golf Sportsvan 2014 - Up
- VW Golf (VII) 2012 - Up
- VW ID.3 2019 - Up
- VW ID.4 2020 - Up
- VW Jetta (VI) 2010 - Up
- VW Passat (B8) 2014 - Up
- VW Polo 2014 - Up
- VW Scirocco (III) 2014 - 2017
- VW Sharan (II) 2016 - Up
- VW T-Roc 2017 - Up
- VW Transporter (T6) 2015 - 2019
- VW Transporter (T6.1) 2019 - Up
- VW Tiguan 2011 - Up
- VW Tiguan Allspace 2017 - Up
- VW Touareg 2010 - Up
- VW Touran (II) 2015 - Up
- VW UPI 2016 - Up

ZDAPMB1

VW Crafter (I) 2006 - 2016

ZX-Series CCA Amp Wiring Kits | Features & benefits

The ZK series includes CCA (Copper Clad Aluminum) cable.

Paired with a twisted pair RCA cable, this kit will be a perfect complement to your Phoenix Gold power amplifiers.



ZK10

ZX-SERIES

10mm² / 7AWG, 600W Pure CCA Install Kit

- 1 x 5.2m transparent matt red power cable, nickel plated round terminal
- 1 x 0.8m transparent matt black ground cable, nickel plated round terminal
- 1 x 5.5m transparent matt black RCA cable
- 1 x 1.8m split tube
- 1 x AFS fuse holder 40A
- 1 x Installation accessories



ZK20

ZX-SERIES

20mm² / 4AWG, 1000W Pure CCA Install Kit

- 1 x 5.2m transparent matt red power cable, nickel plated round terminal
- 1 x 0.8m transparent matt black ground cable, nickel plated round terminal
- 1 x 5.5m transparent matt black RCA cable
- 1 x 1.8m split tube
- 1 x AFS fuse holder 80A
- 1 x Installation accessories



ZK35

ZX-SERIES

35mm² / 2AWG, 1800W Pure CCA Install Kit

- 1 x 5.2m transparent matt red power cable, nickel plated round terminal
- 1 x 0.8m transparent matt black ground cable, nickel plated round terminal
- 1 x 5.5m transparent matt black RCA cable
- 1 x 1.8m split tube
- 1 x AFS fuse holder 150A
- 1 x Installation accessories



ZK50

ZX-SERIES

50mm² / 0AWG, 2500W Pure CCA Install Kit

- 1 x 5.2m transparent matt red power cable, nickel plated round terminal
- 1 x 0.8m transparent matt black ground cable, nickel plated round terminal
- 1 x 5.5m transparent matt black RCA cable
- 1 x 1.8m split tube
- 1 x AFS fuse holder 200A
- 1 x Installation accessories



ZR-Series OFC Amp Wiring Kits | Features & benefits

The ZRK series includes OFC (Oxygen Free Copper) cable.

Paired with a twisted pair RCA cable, this kit will be a perfect complement to your Phoenix Gold power amplifiers.

ZRK10

ZR-SERIES

10mm² / 7AWG, 800W Pure OFC Install Kit

- 1 x 5.2m transparent matt red power cable, nickel plated round terminal
- 1 x 0.8m transparent matt black ground cable, nickel plated round terminal
- 1 x 5.5m transparent matt black RCA cable
- 1 x 1.8m split tube
- 1 x AFS fuse holder 40A
- 1 x Installation accessories

ZRK20

ZR-SERIES

20mm² / 4AWG, 1200W Pure OFC Install Kit

- 1 x 5.2m transparent matt red power cable, nickel plated round terminal
- 1 x 0.8m transparent matt black ground cable, nickel plated round terminal
- 1 x 5.5m transparent matt black RCA cable
- 1 x 1.8m split tube
- 1 x AFS fuse holder 80A
- 1 x Installation accessories

ZRK35

ZR-SERIES

35mm² / 2AWG, 2000W Pure OFC Install Kit

- 1 x 5.2m transparent matt red power cable, nickel plated round terminal
- 1 x 0.8m transparent matt black ground cable, nickel plated round terminal
- 1 x 5.5m transparent matt black RCA cable
- 1 x 1.8m split tube
- 1 x AFS fuse holder 150A
- 1 x Installation accessories

ZRK50

ZR-SERIES

50mm² / 0AWG, 2700W Pure OFC Install Kit

- 1 x 5.2m transparent matt red power cable, nickel plated round terminal
- 1 x 0.8m transparent matt black ground cable, nickel plated round terminal
- 1 x 5.5m transparent matt black RCA cable
- 1 x 1.8m split tube
- 1 x AFS fuse holder 200A
- 1 x Installation accessories



RX2 series

RX-Series | Features & benefits

The devil is in the details. Engineered and built with legendary Phoenix Gold reliability, the RX2-Series is ready to impress with an effortless ability to provide power and clarity that you're going to want to show off and make all your friends jealous.

Amplifiers.
Subwoofers.
Speakers.



RX-Series Amplifiers | Features & benefits

RX2 series amplifiers are the reference for style and value in any installation. Built with the legendary Phoenix Gold reliability, they feature heavy duty heatsinks, robust unregulated power supplies, and oversized direct input power and speaker terminals. They also sound sweet thanks to the audiophile-grade output transistors. We made upgrading your stock system easy by allowing high level inputs, so you can keep that hard to replace radio, and still upgrade the sound. RX2-series amplifiers are ready to impress with their effortless ability to provide power and clarity while keeping the chassis at a convenient size for any installation. The devil is in the details, so it just made sense that we allow the PG name plate to be removed and turned to match the orientation you might need for your install because we know you're going to want show off your system and make all your friends jealous.



RX21000.1

RX-SERIES

1000W Class-D Monoblock Amplifier

Class-D Technology

Power Ratings (RMS)

400W x 1 @ 4Ohm

700W x 2 @ 2Ohm

1000W x 1 @ 1Ohm

Frequency Response 15Hz - 250Hz

Small Footprint Chassis Design

Robust Unregulated Power Supplies

Rotatable Badging for Installation Flexibility

High level Inputs for Easy OEM Integration

Remote Bass Controller Included

Audio Precision® Quality Control Verification

Dimensions (L x W x H) 300 x 205 x 50mm



RX2250.1

RX-SERIES

250W Class A/B Monoblock Amplifier

Class A/B Technology

Power Ratings (RMS)

150W x 1 @ 4Ohm

250W x 1 @ 2Ohm

Frequency Response 15Hz - 250Hz

Robust Unregulated Power Supplies

Rotatable Badging for Installation Flexibility

High level Inputs for Easy OEM Integration

Remote Bass Controller Included

Audio Precision® Quality Control Verification

Dimensions (L x W x H) 300 x 205 x 50mm



RX2400.4

RX-SERIES

400W 4-Channel Class A/B Amplifier

Class A/B Technology

Power Ratings (RMS)

75W x 4 @ 4Ohm (CH1-4)

100W x 4 @ 2Ohm (CH1-4)

200W x 2 @ 4Ohm (bridged)

2CH & 3CH modes available

Frequency Response 10Hz - 40kHz

Small Footprint Chassis Design

Robust Unregulated Power Supplies

Rotatable Badging for Installation Flexibility

High level Inputs for Easy OEM Integration

Audio Precision® Quality Control Verification

Dimensions (L x W x H) 400 x 206 x 50mm

RX-Series Subwoofers | Features & benefits

RX2-series subwoofers are designed to give high performance at a great value.

Where most entry line woofers feature 1.5" voice coils, Phoenix Gold RX2 subwoofers feature long wound 2.0" coils which allows for 25mm of peak to peak excursion. This results in an ability to create deep, accurate bass in vented or sealed enclosures.

RX2 subwoofers are conservatively rated at 200w RMS and available in single and dual 4Ohm configurations.



RX210D

RX-SERIES

10" 200W Subwoofer

400W Peak

200W RMS

Dual 4Ohm voice coil

25mm peak to peak excursion

SPL 85.2dB (1W/1m)

High Excursion CAE/CAD Motor Design

Mounting Diameter 235mm

Mounting Depth 133mm

RX210S

RX-SERIES

10" 200W Subwoofer

400W Peak

200W RMS

Single 4Ohm voice coil

25mm peak to peak excursion

SPL 85.9dB (1W/1m)

High Excursion CAE/CAD Motor Design

Mounting Diameter 235mm

Mounting Depth 133mm



RX212D

RX-SERIES

12" 200W Subwoofer

400W Peak

200W RMS

Dual 4Ohm voice coil

25mm peak to peak excursion

SPL 85.9dB (1W/1m)

High Excursion CAE/CAD Motor Design

Mounting Diameter 282mm

Mounting Depth 145mm

RX212S

RX-SERIES

12" 200W Subwoofer

400W Peak

200W RMS

Single 4Ohm voice coil

25mm peak to peak excursion

SPL 87.1dB (1W/1m)

High Excursion CAE/CAD Motor Design

Mounting Diameter 282mm

Mounting Depth 145mm





RX65CS
RX-SERIES

6.5"/165mm Component Speakers

150W Peak
75W RMS

Impedance 4Ohm
Mounting Depth 64mm
Mounting Diameter 144mm



RX65CX
RX-SERIES

6.5"/165mm Coaxial Speakers

100W Peak
50W RMS

Impedance 4Ohm
Mounting Depth 64mm
Mounting Diameter 144mm



RX69CX
RX-SERIES

6x9"/152x228mm 2-Way Coaxial Speakers

120W Peak
60W RMS

Impedance 4Ohm
Mounting Depth 76mm
Mounting Diameter 221X154mm



RXCS1T
RX-SERIES

Dome Flush Mount Tweeter

100W Peak
50W RMS

Inline 6dB High Pass Crossover Filter
Mounting Depth 19mm
Mounting Diameter 52.5mm

RX-Series Speakers | Features & benefits

The RX series of components and coaxials utilises a high-performance midbass driver that is acoustically matched to a quality Mylar dome tweeter via a passive crossover.

- Anti-Resonant Steel Basket
- High Temperature CAE/CAD Motor Structure
- Triple Laminated
- Ultra Stiff and Light Cone
- UV Treated Foam Surround



RX46CX RX-SERIES

4" x 6"/100 x 152mm Coaxial Speakers

**80W Peak
40W RMS**

Impedance 4Ohm

Mounting Depth 51.5mm

Mounting Diameter 143X88mm



RX4CX RX-SERIES

4"/100mm Coaxial Speakers

**80W Peak
40W RMS**

Impedance 4Ohm

Mounting Depth 50mm

Mounting Diameter 93mm



RX57CX RX-SERIES

5" x 7"/127 x 178mm Coaxial Speakers

**100W Peak
50W RMS**

Impedance 4Ohm

Mounting Depth 71mm

Mounting Diameter 188X131mm



RX5CX RX-SERIES

5" x 7"/127 x 178mm Coaxial Speakers

**80W Peak
40W RMS**

Impedance 4Ohm

Mounting Depth 55mm

Mounting Diameter 120mm

MX series

MX-Series | Features & benefits

Big sound for small spaces. Sub-Compact series of amplifiers, speakers and subwoofers engineered for vehicles where space is at a premium, like trucks, jeeps and sports cars. The MX Series of products proves that amazing things do come in small packages. These full-featured, sub-compact class-D amplifiers, carbon fibre cone slim mount subwoofers and concentric coaxial speakers are designed to fit, without compromising power and sound quality.

Amplifiers & Subwoofers



MX-Series Amplifiers | Features & benefits

Phoenix Gold's MX amplifier series is a sub-compact series of amplifiers engineered for vehicles where space is at a premium, like trucks, jeeps and sports cars. Proving that amazing things do come in small packages. Designed to fit, without compromising power and sound quality, MX amplifiers deliver efficient, clean power to drive your entire system, delivering hard-hitting, articulate bass, warm, studio quality mids and highs, and a listening experience with full tonal accuracy that any audiophile would love.

MX600.4

MX-SERIES

600W 4-Channel Full Range

Class-D Sub Compact Amplifier

Class D Technology

Power Ratings (RMS)

100W x 4 @ 4Ohm

150W x 4 @ 2Ohm

200W x 2 @ 4Ohm (Bridged)

Frequency Response 10Hz - 40kHz

Small Footprint Chassis Design

Remote Bass Controller Included

Robust Unregulated Power Supplies

Bass Boost 0-18dB

Signal to Noise >80dB

Dimensions (L x W x H) 258 x 150 x 48.5mm



MX800.5

MX-SERIES

800W 5-Channel Full Range

Class-D Sub Compact Amplifier

Class D Technology

Power Ratings (RMS)

70W x 4 @ 4Ohm

100W x 4 @ 2Ohm

300W x 1 @ 4Ohm (CH5)

400W x 1 @ 2Ohm (CH5)

Dedicated subwoofer channel

Frequency Response (CH1-4) 10Hz - 40kHz

Frequency Response (CH5) 15Hz - 200Hz

Bridgeable - No

Small Footprint Chassis Design

Remote Bass Controller Included

Robust Unregulated Power Supplies

Bass Boost 0-18dB

Signal to Noise >80dB

Dimensions (L x W x H) 258 x 150 x 48.5mm



MX-Series Subwoofers | Features & benefits

Engineered to overcome the lack of space hurdle for BIG BASS in trucks and the compact vehicle market. The MX subwoofers are here to deliver outstanding performance to the most demanding listener and keep the music going. The heavy-duty construction MX “shallow mount” subwoofers are optimized for maintaining precise control, and maximum reliability while being pushed to the limit!



MX12D2
MX-SERIES

12" 300W Shallow Subwoofer

600W Peak
300W RMS

- 2 x 20hm
- 2" (50mm) Voice coil
- 11mm of Linear Excursion
- High Excursion CAE/CAD Motor Design
- Optimised for Sealed Enclosures
- SPL 85dB (1W/1m)
- Mounting Diameter 282mm
- Mounting Depth 104mm

MX12D4
MX-SERIES

12" 300W Shallow Subwoofer

600W Peak
300W RMS

- 2 x 40hm
- 2" (50mm) Voice coil
- 11mm of Linear Excursion
- High Excursion CAE/CAD Motor Design
- Optimised for Sealed Enclosures
- SPL 85dB (1W/1m)
- Mounting Diameter 282mm
- Mounting Depth 104mm



MX10D2
MX-SERIES

10" 300W Shallow Subwoofer

600W Peak
300W RMS

- 2 x 20hm
- 2" (50mm) Voice coil
- 11mm of Linear Excursion
- High Excursion CAE/CAD Motor Design
- Optimised for Sealed Enclosures
- SPL 84dB (1W/1m)
- Mounting Diameter 234mm
- Mounting Depth 92mm



MX10D4
MX-SERIES

10" 300W Shallow Subwoofer

600W Peak
300W RMS

- 2 x 40hm
- 2" (50mm) Voice coil
- 11mm of Linear Excursion
- High Excursion CAE/CAD Motor Design
- Optimised for Sealed Enclosures
- SPL 85dB (1W/1m)
- Mounting Diameter 234mm
- Mounting Depth 92mm

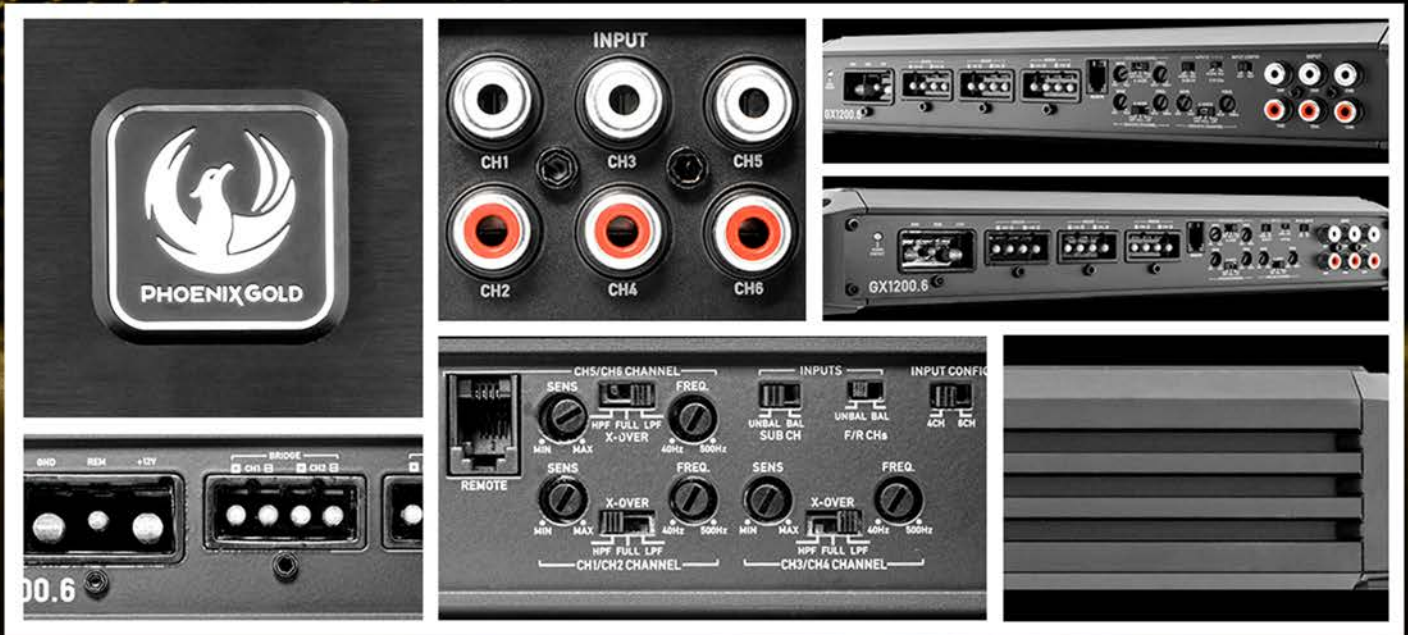


GX series

GX-Series | Features & benefits

Engineered for heart-pounding performance and a breathtaking sound experience.

Amplifiers & Subwoofers

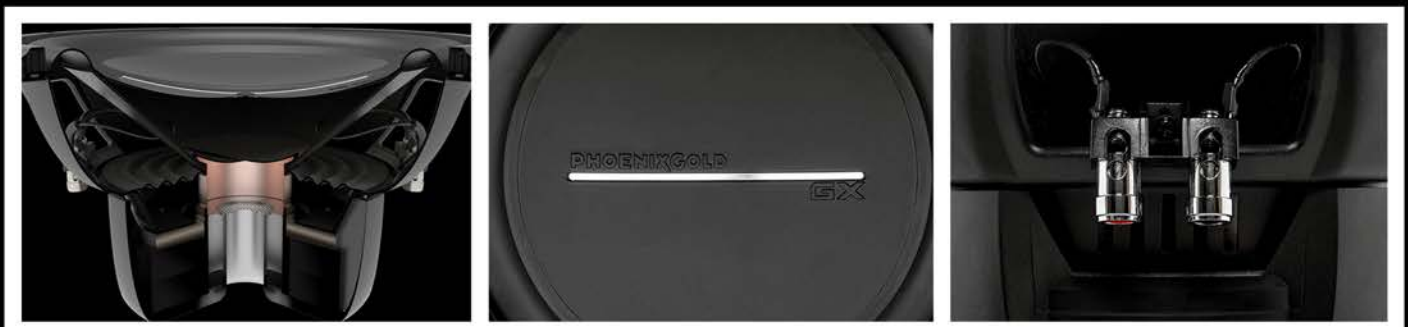


AMPLIFIERS

- Audiophile grade full range Class-D
- High pass and low pass crossovers (GX800.4/1GX200.6)
- High-level input capable - for easy OEM integration
- Selectable balanced / unbalanced inputs
- Surface-mount component technology
- Multi-input selector
- Low pass and subsonic crossovers (GX1200.1)
- Proprietary PG quick connects
- Flush mountable bass knob
- Full radiation heatsink
- Rotatable badge
- Single sided control panel
- Onboard short/therm/imped protection
- 0-180 Degrees Variable phase shift (GX1200.1)

SUBWOOFERS

- Dual cone design
- Magnetic FEA high efficiency motor
- Thermal efficient design via vented motor
- Reduced motor compression via vented motor
- Double looped and sleeved lead wires for high excursion
- Special push type terminals with short prevention
- BEEF'ed up - bent edge enhanced frame
- Linear surround technology - for high excursion
- Black anodized voice coil former - heat dissipation
- CFL³ Technology voice coil
- MLB Collar technology
- Linear long throw spider suspension
- Large 2.5" voice coil
- Removable gasket for adding grills



GX-Series Amplifiers | Features & benefits

Designed to cover a multitude of installation needs, GX is packed with the features and power you can expect from the Phoenix Gold brand. Included in the line are our proprietary PG quick connects for high current capability and reliability while delivering uber clean and quick installations. The chassis has been optimized by utilizing BFD (Balanced Flow Dissipation) to keep the amplifier running cool when the music is hot.



GX800.4

GX-SERIES

800W 4-Channel Full Range Class-D Amplifier

Class D Technology
 Power Ratings (RMS)
 125W x 4 @ 4Ohm
 200W x 4 @ 2Ohm
 400W x 2 @ 4Ohm (bridged)
 Frequency Response 10Hz - 40kHz
 Selectable Balanced / Unbalanced Inputs
 Surface-Mount Component Technology
 Multi-Input Selector
 Input Selection 0.4-10V
 Signal to Noise >100dB
 Remote Bass Controller Included
 Dimensions (L x W x H) 294 x 165 x 51.5mm



GX1200.1

GX-SERIES

1200W 1-Channel Monoblock Class D Amplifier

Class D Technology
 Power Ratings (RMS)
 500W x 1 @ 4Ohm
 800W x 1 @ 2Ohm
 1200W x 1 @ 1Ohm
 Frequency Response 15Hz - 250Hz
 Selectable Balanced / Unbalanced Inputs
 Surface-Mount Component Technology
 Multi-Input Selector
 Input Selection 0.4-10V
 Signal to Noise >100dB
 Remote Bass Controller Included
 Dimensions (L x W x H) 294 x 165 x 51.5mm



GX1200.6

GX-SERIES

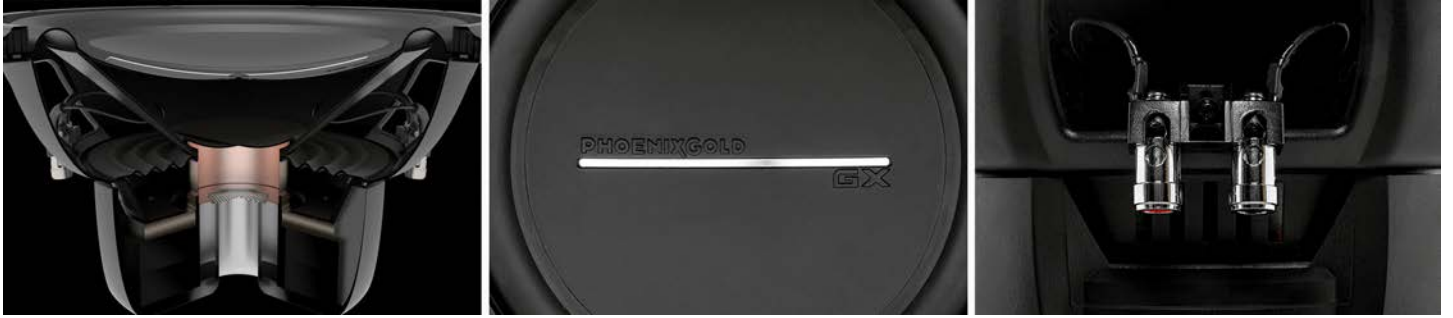
1200W 6-Channel Full Range Class D Amplifier

Class D Technology
 Power Ratings (RMS)
 125W x 6 @ 4Ohm
 200W x 6 @ 2Ohm
 400W x 3 @ 4Ohm (bridged)
 Frequency Response 10Hz - 40kHz
 Selectable Balanced / Unbalanced Inputs
 Surface-Mount Component Technology
 Multi-Input Selector
 Input Selection 0.4-10V
 Signal to Noise >100dB
 Remote Bass Controller Included
 Dimensions (L x W x H) 344 x 165 x 51.5mm



GX-Series Subwoofers | Features & benefits

GX subwoofers are engineered for heart pounding performance and a breathtaking sound experience. These subwoofers feature advanced MLB and CFL3 technologies. Pair GX subwoofers with the GX amplifiers and create an unbeatable combination of sound quality and dynamic performance.



GX10D2

GX-SERIES

**10" High Performance Dual
2 x 20Ohm Subwoofer**

**800W Peak
400W RMS**

Large 2.5" Voice Coil
Nominal Impedance 1.85Ohm
Resonance Frequency 24.87Hz
Sensitivity 1W/M (SPL) 86.13dB
Frequency Response 30-500Hz
Mounting Diameter 232mm
Mounting Depth 139mm

GX10D4

GX-SERIES

**10" High Performance Dual
2 x 40Ohm Subwoofer**

**800W Peak
400W RMS**

Large 2.5" Voice Coil
Nominal Impedance 3.50Ohm
Resonance Frequency 27.53Hz
Sensitivity 1W/M (SPL) 86.78dB
Frequency Response 30-500Hz
Mounting Diameter 232mm
Mounting Depth 139mm





GX12D4
GX-SERIES

**10" High Performance Dual
2 x 40mm Subwoofer**

**800W Peak
400W RMS**

Large 2.5" Voice Coil
Nominal Impedance 3.50Ohm
Resonance Frequency 21.80Hz
Sensitivity 1W/M (SPL) 87.72dB
Frequency Response 30-500Hz
Mounting Diameter 286mm
Mounting Depth 159mm



GX12D2
GX-SERIES

**10" High Performance Dual
2 x 20mm Subwoofer**

**800W Peak
400W RMS**

Large 2.5" Voice Coil
Nominal Impedance 1.85Ohm
Resonance Frequency 21.23Hz
Sensitivity 1W/M (SPL) 87.44dB
Frequency Response 30-500Hz
Mounting Diameter 286mm
Mounting Depth 159mm

EQ9.0 | Features & benefits

The EQ9.0 is a 9 Band Graphic Equaliser allowing precision tuning for audio enthusiasts. The EQ9.0 gives you 9 different frequencies to dial in and tweak to deliver your music, your way. The EQ9.0 utilizes RCA inputs for connection in any aftermarket source unit. It also features two AUX inputs, RCA jacks in the back and an RCA AUX input on the rear. The RCA AUX inputs offer variable gain so you can adjust for audio sources of varying levels, while a selectable low-pass filter at 45 or 60Hz bass performance for the most discerning user.



EQ9.0

PRECISION TUNING

9 Band Graphic Equaliser

- Low output impedance
- High input impedance
- Flat frequency response
- High output voltages
- Excellent signal to noise ratio
- Panel mount RCAs
- Poly caps and low tolerance resistors in all signal path circuits
- Removable terminal block for all input connections

BASSCUBE 2.0 | Features & benefits

The BASS CUBE 2.0 (Constant Usable Bass Enhancement) with Bass Shift takes the audio signal and analyses and enhances bass information that is lost when music is resampled, compressed, streamed, or transmitted. It also allows for fine-tuning of Ported, Sealed or Bandpass enclosures. By adjusting two settings on the BASS CUBE 2.0 you can affect how much the frequencies on either side of the Bass Shift frequency you select are boosted, or the "width" of the boost, with gradual falloff. The BASS CUBE 2.0 also features a subsonic filter switch. This switch is to go between 18dB/Oct subsonic filter frequencies and allows you to tweak this unit to perform best between a Ported/ Bandpass and Sealed system. The subsonic filter can save your speakers from damage and will increase efficiency when going below the tuning frequency of your ports or the capability of your sealed system. These features combined with the BASS CUBE 2.0 remote allow you to dial in the perfect amount of bass enhancement you desire for the best possible listening experience.



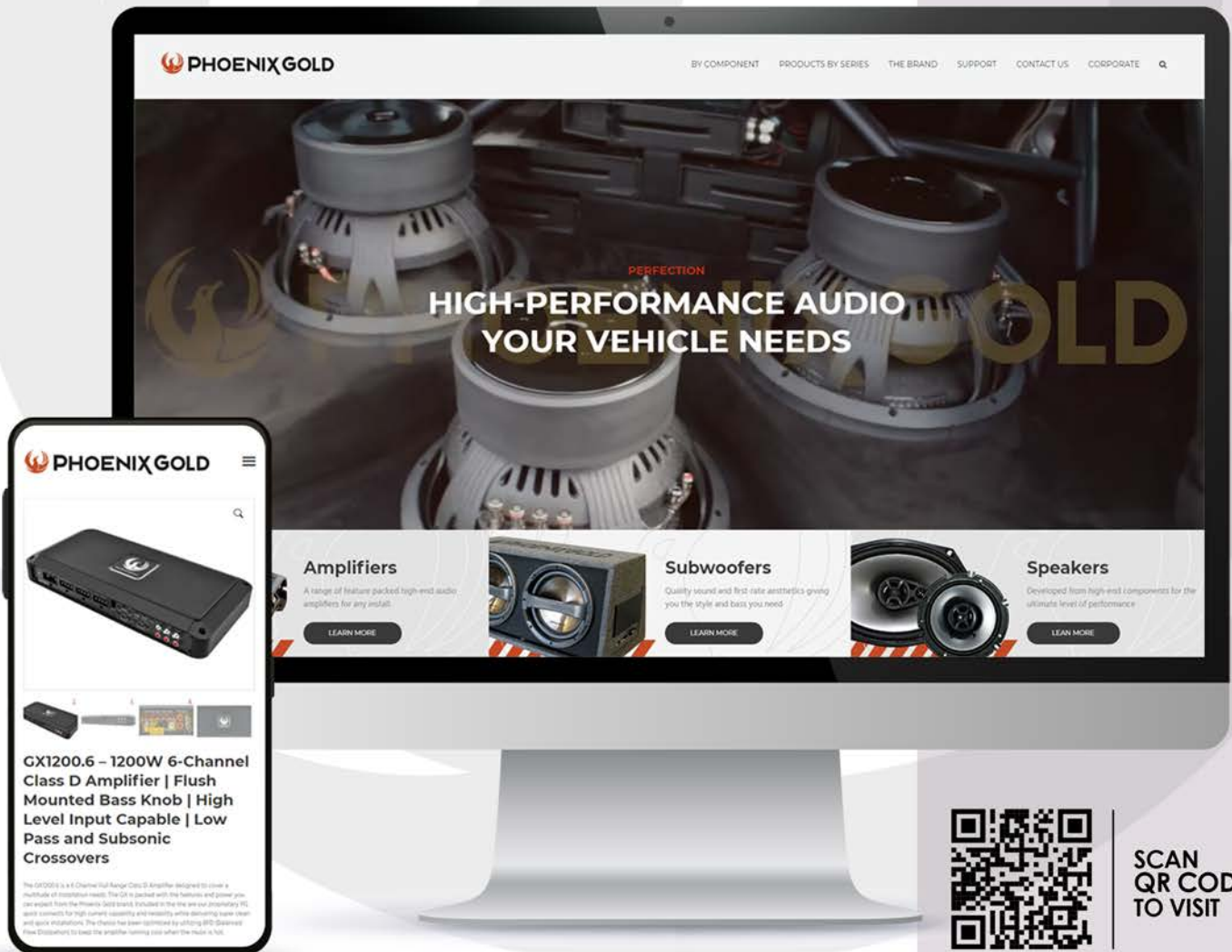
BASSCUBE 2.0

PRECISION TUNING

Description

- Variable center frequency control
- Parametric bass equalization
- Selectable ground isolation switch
- 2-channel digital bass restoration
- Selectable balanced / unbalanced
- RCA input and output internal line driver
- Variable output gain control
- Remote bass enhancement control with status LED
- Selectable subsonic filter

Visit our new Phoenix Gold Website... PHOENIXGOLD-EU.COM



Our fantastic Phoenix Gold European website is now LIVE!
A dedicated platform packed with the latest information, products, specs and images to help you find the right audio product for your system. Our new website really does give you everything you need to find the perfect product selection to ensure your vehicle maintains the highest audio standards for the best possible price.

View the Phoenix Gold range by series or component. Search for the perfect audio product for your system. Read about the brand and history behind the brand and stay up to date on the latest product releases and company news.



SCAN QR CODE TO VISIT



UPDATED DESIGN



MOBILE FRIENDLY



DETAILED PRODUCT PAGES



MULTIPLE PRODUCT PHOTOS

FOLLOW US ON SOCIAL MEDIA



PHOENIX GOLD AUDIO EU
#PHOENIXGOLD

SIGN UP TO OUR
PHOENIX GOLD
NEWSLETTER



SCAN QR CODE TO SIGN UP



ZM

series

OUTDOOR

DOOR

ALL WEATHER SPEAKERS



OUTDOOR
SPEAKERS



WATERPROOF
IP65 RATED



UV
PROTECTION



OFF-ROAD



MARINE



HOME

ZM-Series Outdoor Speakers | Features & benefits

- Ideal for indoor and outdoor use, marine and off road vehicles
- 2-Way weatherproof speakers available in black and white
- Aluminium grill and polypropylene cone
- Crossover with selectable tweeter level
- Adjustable 20mm silk domed tweeter
- UV Treatment prevents discolouring
- PVC casing with mounting bracket



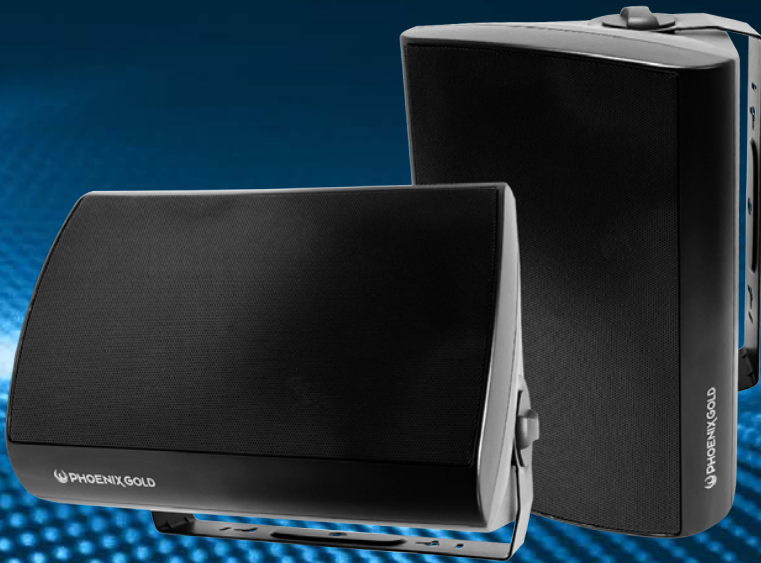
ZM5SW
ZM-Series

5.25" / 130mm 2-Way Weatherproof Speakers

160W PEAK
80W RMS

White Outdoor Speakers
Impedance 8Ohm
Voice Coil 25mm

Frequency Range 70Hz - 20kHz
Sensitivity 90dB / 1W
Tweeter Level Adjustable (High / Low)
Operating Temperature -20 Degrees to +85 Degrees C.
Weight 2.3kg / 5lbs
Speaker Dimensions (W x H x D) 240 x 185 x 165mm



ZM5SB

ZM-Series

5.25"/130mm 2-Way Weatherproof Speakers

160 PEAK

80 RMS

Black Outdoor Speakers

Impedance 8Ohm

Voice Coil 25mm

Frequency Range 70Hz - 20kHz

Sensitivity 90dB / 1W

Tweeter Level Adjustable (High / Low)

Operating Temperature -20 Degrees to +85 Degrees C.

Weight 2.3kg / 5lbs

Speaker Dimensions (W x H x D) 240 x 185 x 165mm



ZM6SW

ZM-Series

6.5"/165mm 2-Way Weatherproof Speakers

220 PEAK

110 RMS

White Outdoor Speakers

Impedance 8Ohm

Voice Coil 25mm

Frequency Range 55Hz - 20kHz

Sensitivity 90dB / 1W

Tweeter Level Adjustable (High / Low)

Operating Temperature -20 Degrees to +85 Degrees C.

Weight 3.5kg / 7.7lbs

Speaker Dimensions (W x H x D) 300 x 215 x 195mm



ZM6SB

ZM-Series

6.5"/165mm 2-Way Weatherproof Speakers

220 PEAK

110 RMS

Black Outdoor Speakers

Impedance 8Ohm

Voice Coil 25mm

Frequency Range 55Hz - 20kHz

Sensitivity 90dB / 1W

Tweeter Level Adjustable (High / Low)

Operating Temperature -20 Degrees to +85 Degrees C.

Weight 3.5kg / 7.7lbs

Speaker Dimensions (W x H x D) 300 x 215 x 195mm

AAMP
— ADVANCING VEHICLE TECHNOLOGY —



THE GOLD STANDARD IN SOUND

PHOENIXGOLD-EU.COM



FOLLOW US ON SOCIAL MEDIA



PHOENIX GOLD AUDIO EU
#PHOENIXGOLD