

## Bryozoa (encrusting) - *Watersipora subtorquata*

<b>DESCRIPTION</b>	This encrusting bryozoan is sheet-like to erect and the zooids are bright orange outlined in black with black opercula clearly visible to the naked eye.
<b>RANGE</b>	From Baja California to Coos Bay, Oregon. First record on the west coast in Cabo San Lucas, Mexico in 1937 based on collecting in 1888. Considered an Atlantic and Caribbean species, it is now invasive worldwide.
<b>SIZE</b>	Zooids with slight mid expansion, but basically rectangular, alternating and regularly spaced. Can form large, upright, chip-like growths that form colonies up to 25 cm tall
<b>STATUS</b>	Invasive
<b>COLOR</b>	bright orange with black opercula, zooids outlined in black.
<b>HABITAT</b>	Often found on docks and man made structures including aquaculture infrastructure. Its resistance to copper based paints allows it to colonize boat hulls and provide substrate for other invading species.
<b>TIDAL HEIGHT</b>	lower intertidal to subtidal
<b>SALINITY</b>	20-50 ppt
<b>TEMPERATURE</b>	12 - 28 C
<b>SIMILAR SPECIES</b>	<i>Schizoporella japonica</i> , another invasives species in Alaska, and <i>Tegella aquilirostris</i> (native) are also orange and look very similar at first glance, but neither of these species has the black opercula or black outline around each zooid. There are 2 other <i>Watersipora</i> species that may be confused with it, <i>Watersipora arcuata</i> (opercula has a distinctive arch proximally) and <i>Watersipora edmonsoni</i> (has a much narrower, longer opercular sinus).



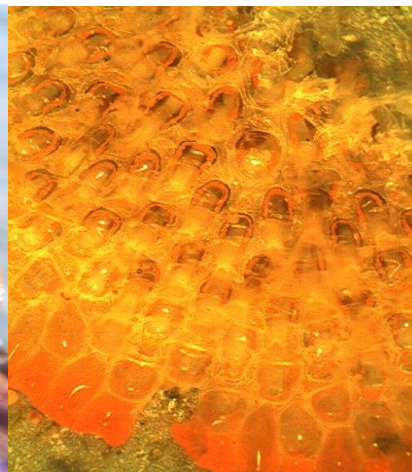
© Melissa Frey



©SERC



©Melissa Frey



©Linda McCann *Tegella aquilirostris*