

# Skeletal muscle channelopathies: a guide to diagnosis and management

Emma Matthews ,<sup>1,2</sup> Sarah Holmes,<sup>3</sup> Doreen Fialho<sup>2,3,4</sup>

<sup>1</sup>Atkinson-Morley Neuromuscular Centre, St George's University Hospitals NHS Foundation Trust, London, UK

<sup>2</sup>Department of Neuromuscular Diseases, UCL, Institute of Neurology, London, UK

<sup>3</sup>Queen Square Centre for Neuromuscular Diseases, National Hospital for Neurology and Neurosurgery, London, UK

<sup>4</sup>Department of Clinical Neurophysiology, King's College Hospital NHS Foundation Trust, London, UK

## Correspondence to

Dr Emma Matthews, Atkinson-Morley Neuromuscular Centre, St George's University Hospitals NHS Foundation Trust, London, UK; e.matthews@sgul.ac.uk

Accepted 19 December 2020  
Published Online First  
9 February 2021

## ABSTRACT

Skeletal muscle channelopathies are a group of rare episodic genetic disorders comprising the periodic paralyses and the non-dystrophic myotonias. They may cause significant morbidity, limit vocational opportunities, be socially embarrassing, and sometimes are associated with sudden cardiac death. The diagnosis is often hampered by symptoms that patients may find difficult to describe, a normal examination in the absence of symptoms, and the need to interpret numerous tests that may be normal or abnormal. However, the symptoms respond very well to holistic management and pharmacological treatment, with great benefit to quality of life. Here, we review when to suspect a muscle channelopathy, how to investigate a possible case and the options for therapy once a diagnosis is made.

## INTRODUCTION

Skeletal muscle channelopathies comprise a group of rare genetic neuromuscular disorders caused by dysfunction of sarcolemmal ion channels that are critical for muscle membrane excitability.<sup>1</sup> In simple terms, they affect the ability of skeletal muscles either to contract, causing muscle weakness, or to relax, causing myotonia. Skeletal muscle channelopathies are divided into the periodic paralyses and the non-dystrophic myotonias, based on whether the predominant clinical symptom is muscle weakness or myotonia. The hallmark of a skeletal muscle channelopathy is that symptoms occur in an episodic or paroxysmal fashion causing acute disability.<sup>2</sup> As a group, they affect approximately 1 in 100 000 people in the UK.<sup>3</sup>

Myotonia (delayed muscle relaxation after contraction) is often described by patients as muscles 'locking', 'sticking' or 'cramping'. Episodic weakness can vary significantly from one limb 'not working or feeling right' to a tetraparesis. Symptoms commonly affect the leg muscles and

in the case of myotonia may be precipitated by sudden or initial movement, leading to falls and injury. Symptoms are also exacerbated by prolonged rest, especially after preceding physical activity, and changes in environmental temperature.<sup>4</sup> Leg muscle myotonia can cause particular problems on public transport, with falls caused by the vehicle stopping abruptly or missing a destination through being unable to rise and exit quickly enough. These difficulties can limit independence, social activity, choice of employment (based on ability both to travel to the location and to perform certain tasks) and are often socially embarrassing. The relationship of symptoms with activity often leads to sedentary behaviour, in turn a risk factor for comorbidities for example, heart disease or stroke. Muscle channelopathies are also frequently painful, which together with impaired physical ability, significantly impacts on quality of life.<sup>5,6</sup>

There are readily available symptomatic treatments for muscle channelopathies that can usually successfully ameliorate the burden of morbidity.<sup>7</sup> More often, the biggest barrier to improving a patient's quality of life is a lack of diagnosis. However, the diagnosis is not always easy, the conditions are rare, and patients may be completely asymptomatic with an apparently normal initial physical examination. The diagnosis hinges on careful history taking arousing clinical suspicion, supported by an accumulation of examination findings (or lack of abnormality) and investigative clues. No single test can provide an answer in isolation.

## CLINICAL HISTORY

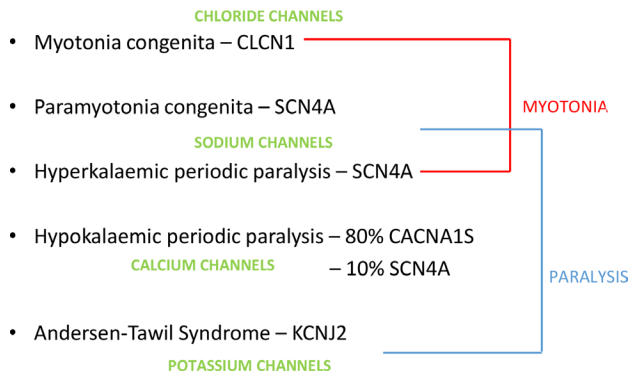
Skeletal muscle channelopathies include the periodic paralyses and the non-dystrophic myotonias.

► The *periodic paralyses* are hypokalaemic periodic paralysis, hyperkalaemic periodic paralysis and Andersen–Tawil syndrome.



© Author(s) (or their employer(s)) 2021. No commercial re-use. See rights and permissions. Published by BMJ.

**To cite:** Matthews E, Holmes S, Fialho D. *Pract Neurol* 2021;**21**:196–205.



**Figure 1** The skeletal muscle channelopathies—causative genes, dysfunctional ion channel and resultant clinical symptom.

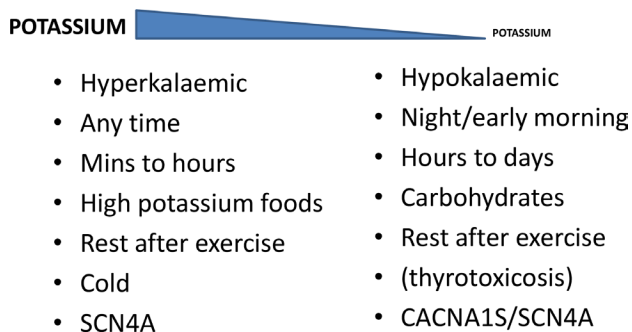
► The *non-dystrophic myotonias* are paramyotonia congenita, sodium channel myotonia and myotonia congenita.

These are genetic disorders, and figure 1 shows the causative genes and the resultant dysfunctional ion channels. In most cases, symptoms can be traced back to the first or second decade, highlighting the importance of taking an early life history. Sometimes, the symptom onset is delayed into the 30s or 40s and/or may only appear during certain life events, for example, pregnancy.

## THE PERIODIC PARALYSES

The names of hypokalaemic periodic paralysis and hyperkalaemic periodic paralysis relate to episodes of muscle weakness accompanying either high or low serum potassium concentrations.<sup>8</sup> They can be further distinguished by the typical pattern and duration of attacks and symptom triggers that either drive up the serum potassium (foods high in potassium) or drive it down (carbohydrate meals)—see figure 2. Myotonia can also develop in hyperkalaemic periodic paralysis but the usual presenting complaint is episodic weakness.

## Periodic Paralysis



**Figure 2** Features that distinguish hypokalaemic and hyperkalaemic periodic paralysis.

When taking a history from someone with possible periodic paralysis, it is important to bear in mind several caveats. Despite being called periodic paralysis, not all weakness episodes are this dramatic. The most profound episodes do include tetraparesis and these cases are most likely to present to the emergency department with a deranged (often low) serum potassium. However, many patients describe more modest weakness, for example, they can stand but only furniture walk, or they can walk on the flat but feel weak and cannot run or climb stairs. Weakness often presents during a period of rest following physical activity. Patients commonly recall having played with friends during school lunch break, returning to sit at a desk for lessons, and then being unable to stand or walk. Sometimes weakness may seem to be task specific or affecting only one limb, for example, a weak dominant hand after a prolonged writing. In these cases, there is usually a history of more generalised weakness; however, these may be the only symptoms initially volunteered as they are the most troubling.

Hypokalaemic periodic paralysis characteristically presents in the early teens with episodes of weakness on waking and lasting several hours. This may result in being unable to attend school in the morning but appearing 'normal' by the afternoon, and so easily misinterpreted as school avoidance.<sup>9</sup> Similar scenarios can lead to disciplinary procedures for working adults.

The recurring episodes of weakness in periodic paralysis are similar but not usually stereotyped. Stereotyped episodes would more suggest a paroxysmal movement disorder or episodic ataxia, in which patients may erroneously use the term 'weakness' when struggling to quantify a symptom that is difficult to describe, for example, dyskinesia.

## ANDERSEN-TAWIL SYNDROME

Andersen-Tawil syndrome is the only skeletal muscle channelopathy to affect systems other than skeletal muscle—namely cardiac muscle and bony development. The classical syndrome is a triad of periodic paralysis (usually mirroring the hypokalaemic periodic paralysis variety), cardiac conduction defects and dysmorphic features.<sup>10</sup> However, in many cases, the dysmorphic features are subtle and overlooked, and the skeletal or cardiac muscle symptoms may dominate the clinical picture obscuring the true breadth of systemic involvement. Patients affected predominantly by periodic paralysis may be misdiagnosed as having hypokalaemic periodic paralysis. This has important implications, as the patient's cardiac risk and need for subsequent monitoring may be overlooked. Sudden cardiac death may occur in Andersen-Tawil syndrome but is generally considered rare. However, cardiac arrhythmias requiring medical intervention appear relatively common, with 20% of patients requiring an implantable cardiac defibrillator in one series,<sup>11</sup> and sometimes occurring without prominent cardiac

symptoms. We recommend all patients with Andersen-Tawil syndrome (regardless of symptoms) have annual cardiac review by an experienced cardiologist, with ECG and prolonged Holter monitoring.

### THE NON-DYSTROPHIC MYOTONIAS

Myotonia is usually the presenting problem in both myotonia congenita and paramyotonia congenita. It can be difficult for patients to describe (especially before a diagnosis is made) and they may use terms such as muscles cramping, being stiff, stuck, aching, or 'not working'. Myotonia can affect any skeletal muscle so although typical patterns of involvement occur—legs more than hands and face in myotonia congenita, hands and face more than legs in paramyotonia congenita—symptoms affecting the trunk, back (back pain) and chest muscles (cannot catch breath/take a deep breath) can all be problematic. Myotonia affecting the face can affect the jaw and tongue, making chewing or swallowing difficult especially with cold food or drink. Cardiac and smooth muscle (bowel or bladder) are not affected in the non-dystrophic myotonias.

Other characteristic pointers towards either myotonia congenita or paramyotonia congenita include the warm-up phenomenon in myotonia congenita (myotonia improving with repetitive activity) or paradoxical myotonia in paramyotonia congenita (worsens with repetition), as well as different forms of episodic weakness (see [table 1](#)). Sodium channel myotonia has features that overlap with both myotonia congenita and paramyotonia congenita but this term refers essentially to a pure myotonic disorder without episodic weakness, caused by mutations in the *SCN4A* (sodium channel) gene.

Myotonia itself is a symptom and/or sign, not a diagnosis. It can be seen or detected during electromyography (EMG) in other conditions including myotonic dystrophy types 1 and 2, Pompe's disease<sup>12</sup> and other myopathies<sup>13</sup> (where it may have no overt clinical signs and be detectable only by EMG), or it may be drug induced.<sup>14</sup> Nevertheless, by far the most common diagnosis in someone with myotonia is myotonic dystrophy type 1; this should always be considered especially in younger patients who may not yet manifest its multisystem involvement. Also DM2, less common than DM1 and with more mild systemic features (even at older ages), can cause confusion with non-dystrophic myotonia.

### PAIN AND FATIGUE

Although episodic weakness or myotonia are the dominant clinical symptoms in the skeletal muscle channelopathies, pain (myalgia) and fatigue are often prominent and sometimes are the patient's main concern.<sup>5 6 15</sup> It is important to enquire about these and to attempt to treat them as well as addressing weakness and myotonia.

### EXAMINATION FINDINGS

The examination is typically normal in the periodic paralyses although some patients do develop a proximal myopathy. However, if patients are examined during an episode of weakness, as well as reduced strength, the reflexes are reduced or absent. In someone with hyperkalaemic periodic paralysis there may be detectable myotonia. Patients with Andersen-Tawil syndrome can have dysmorphic features including short stature, low-set ears, micrognathia, clinodactyly, dental abnormalities.<sup>16</sup> Note that any dental abnormalities may have been corrected in childhood, so it is important to enquire about dental work, especially extraction for overcrowding.

People with myotonia often have generalised muscle hypertrophy, or well-defined muscles.<sup>9</sup> Because they are often young adults at presentation, it is easy to assume they look this way because they are young and fit. Muscle hypertrophy must always be considered in context and clinicians should make a specific enquiry as to how active or how many times a week they actually attend the gym.

Patients with a myotonic disorder will (nearly always) have evidence of myotonia on examination but this can be easily overlooked in a general neurological examination. Patients with myotonia congenita are best diagnosed from the waiting room. They may well have sat for a while waiting to be called. When they first rise, their leg muscle myotonia causes them to be slow and to have a stiff gait. By the time they reach the clinic room this has become normal. Examination for eyelid closure or hand grip myotonia should be repeated. If the patient has paramyotonia congenita the first movements may appear unrestricted and only with repetition will myotonia become evident (paradoxical myotonia). Conversely in myotonia congenita, the myotonia may be immediately evident with the first test but improves or disappears with repetition that is, the warm-up phenomenon. We usually ask the patient to grip their hands tightly or to close their eyes 'as if they have soap in them' for 5 s, then to open the hands/eyes as fast as possible. This should be repeated three to five times. Other findings can include contractures, for example, at the elbow and scoliosis, although this is most commonly seen in children and young adults.

### INVESTIGATIONS

Investigations performed when considering the possibility of a muscle channelopathy need to be interpreted in light of the overall presentation, as a negative test in isolation does not exclude a channelopathy.

### BLOODS TESTS/CREATINE KINASE

The main role of blood tests in investigating a skeletal muscle channelopathy is to exclude other diagnoses. A standard 'battery' includes tests of renal function (is there renal disease altering the serum potassium?), thyroid function tests (does the patient have thyrotoxic

**Table 1** Clinical features of the non-dystrophic myotonias

	Gene	Inheritance pattern	Muscles most commonly affected	Symptomatic triggers	Relieving factors	Warm up phenomenon (myotonia improves with repetition)	Paradoxical myotonia (myotonia worsens with repetition)	Episodic weakness	Muscle hypertrophy
Myotonia congenita	<i>CLCN1</i>	Autosomal dominant or recessive	Legs > hands or face. Falls are common.	Prolonged rest or sitting (especially after activity) Temperature extremes hot or cold	Warm environments (although extremes can provoke myotonia) Gentle movement before engaging in activity	Characteristic finding	No	Transient weakness improving with repetition of task	Yes Characteristically calf muscle hypertrophy but can be generalised
Paramyotonia congenita	<i>SCN4A</i>	Autosomal dominant	Face and hands > legs	Cold environment Activity rest after activity	Warm environments	No	Characteristic finding	Prolonged weakness or paralysis (can have clinical overlap with hyperkalaemic periodic paralysis).	Yes can be generalised
Sodium channel myotonia*	<i>SCN4A</i>	Autosomal dominant	Either pattern	Prolonged rest or sitting (especially after activity) Activity temperature extremes hot or cold	Warm environments (although extremes can provoke myotonia)	Can occur	Can occur	No	Yes can be generalised

\* Before the genetic basis of channelopathies was known many clinical phenotypes were described including potassium aggravated myotonia, acetazolamide responsive myotonia but these were subsequently all shown to be due to mutations in the *SCN4A* gene and are now collectively called sodium channel myotonia.

**Table 2** Differential diagnoses of skeletal muscle channelopathies

Diagnosis	Comment
Myopathies—Pompe's disease, myofibrillar myopathy	May have electrical myotonia on EMG.
Myopathies—metabolic, McArdle's disease, RYR1 related	Episodic symptoms, often related to physical exertion, can be confused with periodic paralysis. A specific RYR1/periodic paralysis overlap syndrome has recently been identified.
Becker muscular dystrophy	Large calves occasionally confused with calf hypertrophy seen in myotonia congenita.
Secondary causes of hypokalaemia for example, renal disease, drug induced	Profound hypokalaemia can induce muscle weakness in anyone, even without a genetic predisposition.
Thyrotoxic periodic paralysis	Can present with hypokalaemic periodic paralysis, most commonly seen in Asian males. Essential to check thyroid function tests in all first presentations of hypokalaemic periodic paralysis as treatment of the thyrotoxicosis abolishes the episodes of periodic paralysis.
Migraine (hemiplegic migraine)	Usually, there is a headache history to guide diagnosis but non-headache symptoms may predominate.
Paroxysmal movement disorders, for example, paroxysmal kinesigenic dyskinesia, GLUT1 deficiency, episodic ataxia	Patients may use the term 'weakness' erroneously when it is difficult to quantify a symptom
Functional disorder	Most commonly a functional episodic weakness confused with periodic paralysis

EMG, electromyography.

periodic paralysis?), white cell enzymes (Pompe's disease) and creatine kinase. Serum creatine kinase in people with skeletal muscle channelopathies typically ranges from being within normal limits to being up to 1000 IU/L.<sup>6</sup> It is a non-specific test but an abnormal result always helps to support the suspicion of a neuromuscular disorder. However, a normal result does not exclude a skeletal muscle channelopathy. Values above 1000 IU/L can occur and are consistent with a skeletal muscle channelopathy diagnosis but they are less common<sup>17</sup>; values this high makes it worth considering the whole presentation and asking if this could reflect an alternative neuromuscular diagnosis (see table 2). There are rare reports of a skeletal muscle channelopathy with a serum creatine kinase above 10 000 IU/L and presentation with rhabdomyolysis.<sup>18</sup>

Ictal serum potassium concentrations can help but are not absolute in someone with possible periodic paralysis. If the weakness is severe enough to cause tetraparesis, then the serum potassium will usually be outside the normal range. However, the key element associated with weakness is a rise or fall in serum potassium concentration; the absolute value is not always abnormal. This can be especially true if an attack is beginning to subside, or has subsided by the time any blood tests are taken.

## NEUROPHYSIOLOGY

Standard EMG and nerve conduction studies are usually normal in the periodic paralyses (except in some cases of hyperkalaemic periodic paralysis with myotonia). The most informative test to diagnose a periodic paralysis is a long exercise test.<sup>19</sup> This involves stimulating the ulnar nerve and recording a series of compound muscle action potentials (CMAP) from abductor digiti minimi before and after 'exercise' of the muscle (abduction against resistance over a

5 min period). The postexercise CMAPs are recorded for a 50 min period looking for a 40% or more decline in amplitude compared with the postexercise peak. A positive test indicates a periodic paralysis but not the subtype. In a significant minority of cases, especially in those with Andersen-Tawil syndrome as well as those with rare attacks of weakness, the long exercise test can be normal.<sup>20</sup> So, a positive test can help but a negative test does not exclude a diagnosis of periodic paralysis.

EMG will determine the presence of myotonia. However, myotonia is non-specific and having identified it, the clinician needs to consider all the possible differential diagnoses (table 2). Electrical myotonia without clinical myotonia is more common in people with a myopathic disorder but usually there are other indicators of this, for example, a myopathic EMG, fixed weakness on examination and persistent functional disability. A repeat short exercise test can show certain patterns of response that help to indicate the different sub-types of non-dystrophic myotonia<sup>21</sup> but it is not specific and there is overlap with the patterns seen in myotonic dystrophy. Now that next-generation sequencing allows genes to be sequenced in parallel, rather than having to select a 'first choice', this test has less practical value.

## GENETIC TESTING

Next-generation sequencing means that parallel testing of all genes relevant to skeletal muscle channelopathies is now available in the UK. This is particularly helpful for Andersen-Tawil syndrome, which may present clinically with a hypokalaemic periodic paralysis picture but an accurate diagnosis can be made only by next-generation sequencing. This includes analysis of all three periodic paralysis genes, *SCN4A*, *CACNA1S* and *KCNJ2*. Due to the cardiac risks of Andersen-Tawil

syndrome we recommend offering genetic testing to all relatives of a proband, regardless of symptoms.

For a possible myotonic disorder, *CLCN1* and *SCN4A* are also analysed in parallel. DM1 and DM2 genetic testing needs to be requested separately and should not be forgotten even if the patient appears ‘only’ to have a myotonic disorder.

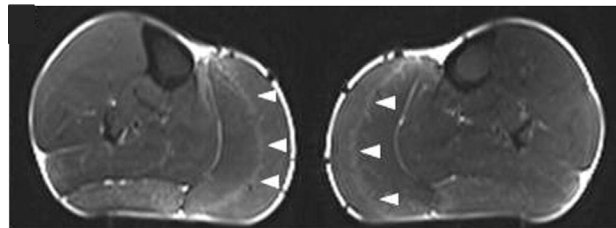
In terms of inheritance pattern, all skeletal muscle channelopathies are autosomal dominant or de novo, except for myotonia congenita, which can be dominant or recessive. Recessive *CLCN1* variants can cosegregate with an *SCN4A* variant or an expansion in the *DMPK* and *CNBP* genes associated with DM1 and DM2. This can cause diagnostic confusion, for example, if a proband has a clinical diagnosis of myotonia congenita but genetic analysis identifies one variant in a family with dominant inheritance of a myotonic disorder, it may be assumed that this reflects a positive diagnosis; in fact, the proband may have myotonic dystrophy but be a carrier for a recessive *CLCN1* variant. This has clinical implications as the patient may not be monitored for cardiac and other systemic complications if diagnosed with myotonia congenita.

The characteristic phenotypes of the skeletal muscle channelopathies have been described for over 100 years and the genetic basis of these disorders known since the early 1990s. A significant minority of patients do present with a channelopathy like clinical presentation but have a negative genetic result for these established disease causing genes.

In the last few years, several alternative genetic causes of episodic neuromuscular weakness have been identified, with expanding phenotypes.<sup>22 23</sup> Other neuromuscular conditions can also have episodic or fluctuant presentations, for example, metabolic disorders (see table 2); these should be considered if genetic testing for a skeletal muscle channelopathy is negative. Also other paroxysmal disorders, especially GLUT1 deficiency syndrome and paroxysmal kinesigenic dyskinesia, can erroneously be referred to a neuromuscular clinic.<sup>24</sup>

### OTHER INVESTIGATIONS—MR SCANNING AND MUSCLE BIOPSY

MR scanning of muscles, usually of the lower limb muscles in skeletal muscle channelopathies, can show fatty muscle infiltration in keeping with the clinical development of fixed myopathy<sup>25</sup> or T1 STIR hyperintensity. In periodic paralysis the STIR hyperintensity probably reflects disease activity, that is, ongoing recurrent episodes of weakness. This can help in guiding symptom treatment and response. Early pattern recognition, including a gastrocnemius ‘central stripe’ in myotonia congenita<sup>26</sup> may be diagnostic pointers (figure 3) but as yet there is no established definitive MRI pattern of muscle involvement for skeletal muscle channelopathies.



**Figure 3** MR scan images (STIR) of both calves in a patient with myotonia congenita, showing the ‘central stripe’ in both left and right medial gastrocnemius muscles (arrowheads). Figure reproduced.<sup>26</sup>

A muscle biopsy is not necessary or generally informative for the diagnosis of typical skeletal muscle channelopathies. Those performed historically have shown non-specific myopathic findings, including a vacuolar myopathy in periodic paralysis.<sup>27</sup> Exceptions to this include the newer and atypical phenotypes of channelopathy, for example, RYR1-related periodic paralysis where a muscle biopsy can support the diagnosis.<sup>22</sup>

### MANAGEMENT

Skeletal muscle channelopathies are genetic disorders that currently are not curable but there are numerous symptomatic treatments and management approaches that can significantly impact morbidity.

### LIFESTYLE AND ACTIVITY

Many people with skeletal muscle channelopathies report some clear symptom triggers, for example, foods high in carbohydrate or potassium. Keeping a food diary can help to identify these and help people to avoid them or make alternative food choices.

The relationship between symptoms and exercise means that many people with these conditions avoid exercise and activity, having low levels of physical activity and difficulty maintaining an active lifestyle. However, those people who have managed to develop ways of staying active do find this helpful.

There are well-established benefits of keeping active, in terms of extending health span, and particularly for people with long-term conditions. There are also well known correlations for the general population between extended periods of inactivity (sedentary behaviour), health outcomes including obesity, cardiovascular and metabolic diseases, and an increased risk of mortality.<sup>28 29</sup>

There is little published evidence about activity specifically in people with skeletal muscle channelopathies, although our personal experience suggests a trend for high levels of sedentary behaviour in this population, indicating that interventions addressing this may help improve health outcomes.

Advice on extended periods of warm up and cool down, and stretches before and after exercise, can support an individual to transition in and out of, and prepare for exercise, without precipitating symptoms

and/or in some cases associated muscle pain. Low intensity and low resistance exercises, focusing on gradually increasing repetitions and resistance as muscles adjust, can also help to avoid worsening myotonia or precipitating weakness. Activity monitors or apps can help to measure activity, and to establish a baseline from to set goals for gradually increasing activity and/or to interrupt extended periods of sedentary behaviour. Walking and moving around is often more accessible than formally working out at the gym.

Fatigue may also improve with these approaches or may require additional referral to a formal fatigue management programme.

### PHARMACOLOGICAL TREATMENTS

Some people choose to manage symptoms by adjusting triggers as much as possible.<sup>7</sup> When medication is indicated there are numerous choices. In the periodic paralyses, prophylactic treatment aims at controlling serum potassium, with diuretics that are either potassium sparing (aldosterone antagonists for example, spironolactone, or amiloride) or potassium wasting (thiazides). For those with hypokalaemic periodic paralysis, potassium supplements taken at the onset of an attack can help to abort or minimise symptoms.<sup>7</sup> Other options effective in both forms of periodic paralysis include carbonic anhydrase inhibitors: acetazolamide or dichlorphenamide (not currently available in UK). Long-term acetazolamide requires an annual renal ultrasound scan to monitor for renal calculi. The treatment of non-dystrophic myotonia of any subtype is with sodium-channel blockers. Mexiletine is most widely used and has the greatest available evidence of efficacy and safety<sup>30–32</sup> but lamotrigine is increasingly popular following a recent clinical trial.<sup>33</sup> Other options with more limited or anecdotal data include ranolazine, carbamazepine, flecainide, propafenone and phenytoin. All options are aimed primarily at treating either episodic weakness or myotonia. There are no studies to indicate the best treatment of pain or myalgia in these conditions. Our experience is that acetazolamide, often combined with an anti-myotonic agent such as mexiletine can help in the non-dystrophic myotonias but that analgesics, including neuropathic agents, often have limited benefit.

There is some limited evidence that aggressive control of episodic symptoms might influence the longer term development of a proximal myopathy that can occur in muscle channelopathies.

### CARDIAC MANAGEMENT

All patients with Andersen-Tawil syndrome should have an annual review with a cardiologist. Extended ECG recording, for example, 24 or 72 hours Holter monitoring may detect arrhythmias that require treatment even when the patient reports no symptoms. There is no randomised controlled trial evidence for the most effective antiarrhythmic regimen but beta-blockers or

flecainide are commonly used. The requirement for interventional devices such as an implantable cardiac defibrillator appears to be more common than previously appreciated, emphasising the importance of expert cardiac involvement.<sup>11</sup>

### EMERGENCY TREATMENT OF PERIODIC PARALYSIS

Among patients with skeletal muscle channelopathies it is those with hypokalaemic periodic paralysis who present most commonly to emergency departments, due to the extended nature of their attacks. All patients presenting with a first episode of hypokalaemic periodic paralysis should be investigated for secondary causes of hypokalaemia, and especially thyrotoxicosis (figure 2). Those with a low serum potassium require ECG monitoring. Any ECG changes are an indication to use an intravenous rather than oral potassium replacement. ECG and serum potassium monitoring must continue during replacement and for several hours after its correction to normal. This is because during an attack, potassium is held intracellularly but the total body potassium is not actually low. As the attack subsides, potassium returns to the serum. Combining this with exogenous replacement can result in a rebound hyperkalaemia and iatrogenic death.<sup>34</sup>

### PREGNANCY AND LABOUR

Most pregnant women with skeletal muscle channelopathies report symptom exacerbation during pregnancy,<sup>35 36</sup> probably due to both hormonal changes and medication withdrawal. The current recommendation is to stop medication before and during pregnancy due either to evidence of teratogenicity or a lack of safety data. There are some reports of mexiletine having been used without major adverse event during pregnancy<sup>37 38</sup> and the more recent evidence of lamotrigine's efficacy in myotonic disorders<sup>33</sup> offers a potential option for pregnant women. Worsening symptoms can be particularly detrimental if they provoke increased falls. The symptoms may necessitate taking maternity leave early, with the knock-on effect of limiting time available to spend with baby post-partum.

Many women with skeletal muscle channelopathies have spontaneous unassisted vaginal deliveries, and this should remain an option when birth planning. However, we usually recommend considering the labour to be relatively high risk, such that delivery takes place in a facility where there are senior paediatric, obstetric and anaesthetic staff and facilities available if required. Symptoms of weakness or myotonia may prolong a labour and delivery with all the inherent complications of this, but also a subgroup of infants can have life-threatening respiratory complications if they have inherited the disorder<sup>39</sup> (predominantly those inheriting an *SCN4A* gene mutation).

### ANAESTHETIC CONSIDERATIONS

For any patient requiring an anaesthetic (including during labour) it is essential the anaesthetist knows

of the diagnosis of a skeletal muscle channelopathy beforehand, where feasible. Local or regional anaesthetics are preferred to a general anaesthetic if possible. If using general anaesthesia, propofol and non-depolarising anaesthetic agents appear to be effective and safe.<sup>40</sup> Depolarising anaesthetics or suxamethonium can precipitate a myotonic crisis with profound muscle rigidity, which can mimic a malignant hyperthermia type reaction. If the rigidity includes the jaw muscles, intubation may be impossible.<sup>41</sup> Suxamethonium can also induce hyperkalaemia and ventricular arrhythmia, which can be fatal.<sup>42</sup> Emergency treatment for a myotonic crisis is with intravenous sodium channel blockers such as lidocaine.<sup>40</sup>

Note that other peri-operative factors can also exacerbate symptoms of a skeletal muscle channelopathy for example, prolonged immobility, or a cold operating theatre/recovery room.

In summary skeletal muscle channelopathies are rare. They can evade diagnosis because the symptoms are sometimes hard for a patient to describe, the examination is often normal and investigations may be normal or negative unless conducted during symptoms. Yet they are extremely treatable and making the appropriate diagnosis and management plan can be very rewarding for clinicians, and greatly benefit patients.

### CASE EXAMPLE: A WEAK PATIENT IN THE EMERGENCY DEPARTMENT WITH A LOW POTASSIUM—IS IT PERIODIC PARALYSIS?

#### HISTORY

The age of the patient can be indicative. Drug history may be more pertinent in older patients. Genetic disorders are more likely to present for the first time in younger patients, the typical age of onset of hypokalaemic periodic paralysis being in the teens. These are of course pointers only, and age is not an absolute criterion for genetic causes of periodic paralysis. Hypokalaemia from any systemic, drug-induced or genetic cause can induce muscle weakness. Ask the patient if they have diarrhoea and vomiting, tachycardia and palpitations (thyrotoxicosis). Is there a history of renal disease? Take a drug history and family history (is there a known family history of periodic paralysis or relatives with the same symptoms)? Has this happened before or have they had milder symptoms of weakness that resolved spontaneously without needing to attend the Emergency Department?

#### EXAMINATION

Weakness typically affects the limbs and trunk with reduced or absent reflexes. Muscles of the neck and face are less commonly affected but can be. This may cause slurred speech if the lower face and tongue are weak or for there to be eye closure weakness. Extraocular muscles are not usually weak; an inability to

speak or to open the eyes at all is not typical and more suggestive of functional weakness. In young children with hypokalaemic periodic paralysis respiratory muscle weakness can cause respiratory distress and hypoxia. This is much less common in teenagers and adults but can occur in severe episodes with tetraparesis. Does the patient look dysmorphic? Do they have short stature? Short stature and dysmorphic features vary widely in Andersen-Tawil syndrome but among the most common are micrognathia (small chin), clinodactyly (curved digit, usually the little fingers) and low-set ears. Are there any other systemic abnormalities? Hypertension may accompany secondary causes of hypokalaemia. Tachycardia may suggest thyrotoxicosis but can occur with hypokalaemia itself, or may just indicate the patient is anxious about being unable to walk.

#### INITIAL INVESTIGATIONS AND MANAGEMENT

Hypokalaemia with normal acid–base balance is expected in genetic forms of hypokalaemic periodic paralysis. Acid–base disturbance should prompt more extensive renal, and endocrine investigations for, for example, renal tubular acidosis, Gitelman's syndrome, or hyperaldosteronism. Given that the hypokalaemic weakness may be the only indicator of thyroid disease we recommend routinely testing all first presentations. Serum creatine kinase can be normal or raised and is non-specific to diagnosis but a positive test can

#### Key points

- ▶ When assessing a myotonic disorder without obvious systemic involvement, do not forget myotonic dystrophy.
- ▶ Symptoms of a muscle channelopathy are more than just weakness and myotonia: pain and fatigue can be prominent.
- ▶ Andersen-Tawil syndrome requires cardiac monitoring regardless of symptoms.
- ▶ Episodic movement disorders can be confused with a muscle channelopathy and vice versa.
- ▶ Skeletal muscle channelopathies are treatable disorders.

#### Further reading

- ▶ Cannon SC. Channelopathies of skeletal muscle excitability. *Compr Physiol* 2015;5:761–90.
- ▶ Jitpimolmard N, Matthews E, Fialho D. Treatment updates for neuromuscular channelopathies. *Curr Treat Options Neurol* 2020;22:34.
- ▶ Matthews E, Balestrini S, Sisodiya SM, et al. Muscle and brain sodium channelopathies: genetic causes, clinical phenotypes, and management approaches. *Lancet Child Adolesc Health* 2020;4:536–47.



help with triaging an onward referral after the acute episode.

Monitor the ECG and serum potassium. There is no absolute value for when to choose oral vs intravenous replacement but a potassium <2.5 mmol/L, severe muscle paralysis especially if breathing is impaired, or ECG changes of hypokalaemia (flat T waves, u waves, ST segment depression) are indicators for giving intravenous potassium. A typical dose of 40 mmol/L potassium chloride in 1 L of 0.9% sodium chloride given at a rate of 10 mmol/hour is usually sufficient but local guidelines should be consulted. If potassium replacement is given it is mandatory to monitor the ECG throughout and for several hours after normokalaemia as there is a risk of rebound hyperkalaemia.

**Twitter** Emma Matthews @EmmaM\_Channels

**Contributors** All authors contributed to drafting and editing the manuscript.

**Funding** The authors have not declared a specific grant for this research from any funding agency in the public, commercial or not-for-profit sectors.

**Competing interests** None declared.

**Patient consent for publication** Not required.

**Provenance and peer review** Commissioned: externally reviewed by Jon Walters, Swansea, UK.

#### ORCID iD

Emma Matthews <http://orcid.org/0000-0002-3810-306X>

## REFERENCES

- Cannon SC. Channelopathies of skeletal muscle excitability. *Compr Physiol* 2015;5:761–90.
- Matthews E, Hanna MG. *Skeletal muscle channelopathies. Oxford textbook of neuromuscular disorders*, 2014.
- Horga A, Raja Rayan DL, Matthews E, et al. Prevalence study of genetically defined skeletal muscle channelopathies in England. *Neurology* 2013;80:1472–5.
- EMaMG H. *Skeletal muscle channelopathies. Oxford textbook of neuromuscular disorders*, 2014.
- Trip J, de Vries J, Drost G, et al. Health status in non-dystrophic myotonias: close relation with pain and fatigue. *J Neurol* 2009;256:939–47.
- Trivedi JR, Bundy B, Statland J, et al. Non-dystrophic myotonia: prospective study of objective and patient reported outcomes. *Brain* 2013;136:2189–200.
- Jitpimolmard N, Matthews E, Fialho D. Treatment updates for neuromuscular channelopathies. *Curr Treat Options Neurol* 2020;22:34.
- Statland JM, Fontaine B, Hanna MG, et al. Review of the diagnosis and treatment of periodic paralysis. *Muscle Nerve* 2018;57:522–30.
- Matthews E, Silwal A, Sud R, et al. Skeletal muscle channelopathies: rare disorders with common pediatric symptoms. *J Pediatr* 2017;188:181–5.
- Andersen ED, Krasilnikoff PA, Overvad H. Intermittent muscular weakness, extrasystoles, and multiple developmental anomalies. A new syndrome? *Acta Paediatr Scand* 1971;60:559–64.
- Mazzanti A, Guz D, Trancuccio A, et al. Natural history and risk stratification in Andersen-Tawil syndrome type 1. *J Am Coll Cardiol* 2020;75:1772–84.
- Kassardjian CD, Engel AG, Sorenson EJ. Electromyographic findings in 37 patients with adult-onset acid maltase deficiency. *Muscle Nerve* 2015;51:759–61.
- Milone M, McEvoy KM, Sorenson EJ, et al. Myotonia associated with caveolin-3 mutation. *Muscle Nerve* 2012;45:897–900.
- Miller TM. Differential diagnosis of myotonic disorders. *Muscle Nerve* 2008;37:293–9.
- Palmio J, Sandell S, Hanna MG, et al. Predominantly myalgic phenotype caused by the c.3466G>A p.A1156T mutation in SCN4A gene. *Neurology* 2017;88:1520–7.
- Davies NP, Imbrici P, Fialho D, et al. Andersen-Tawil syndrome: new potassium channel mutations and possible phenotypic variation. *Neurology* 2005;65:1083–9.
- Matthews E, Miller JAL, MacLeod MR, et al. Sodium and chloride channelopathies with myositis: coincidence or connection? *Muscle Nerve* 2011;44:283–8.
- Anandan C, Cipriani MA, Laughlin RS, et al. Rhabdomyolysis and fluctuating asymptomatic hyperCKemia associated with CACNA1S variant. *Eur J Neurol* 2018;25:417–9.
- McManis PG, Lambert EH, Daube JR. The exercise test in periodic paralysis. *Muscle Nerve* 1986;9:704–10.
- Tan SV, Matthews E, Barber M, et al. Refined exercise testing can aid DNA-based diagnosis in muscle channelopathies. *Ann Neurol* 2011;69:328–40.
- Fournier E, Arzel M, Sternberg D, et al. Electromyography guides toward subgroups of mutations in muscle channelopathies. *Ann Neurol* 2004;56:650–61.
- Matthews E, Neuwirth C, Jaffer F, et al. Atypical periodic paralysis and myalgia: A novel RYR1 phenotype. *Neurology* 2018;90:e412–8.
- Sampedro Castañeda M, Zanoteli E, Scalco RS, et al. A novel Atp1a2 mutation in a patient with hypokalaemic periodic paralysis and CNS symptoms. *Brain* 2018;141:3308–18.
- Wang H-X, Li H-F, Liu G-L, et al. Mutation analysis of MR-1, SLC2A1, and CLCN1 in 28 PRRT2-negative paroxysmal kinesigenic dyskinesia patients. *Chin Med J* 2016;129:1017–21.
- Holm-Yildiz S, Witting N, Dahlqvist J, et al. Permanent muscle weakness in hypokalaemic periodic paralysis. *Neurology* 2020;95:e342–52.
- Morrow JM, Matthews E, Raja Rayan DL, et al. Muscle MRI reveals distinct abnormalities in genetically proven non-dystrophic myotonias. *Neuromuscul Disord* 2013;23:637–46.
- Links TP, Zwarts MJ, Wilmsink JT, et al. Permanent muscle weakness in familial hypokalaemic periodic paralysis. Clinical, radiological and pathological aspects. *Brain* 1990;113 (Pt 6):1873–89.
- Warren TY, Barry V, Hooker SP, et al. Sedentary behaviors increase risk of cardiovascular disease mortality in men. *Med Sci Sports Exerc* 2010;42:879–85.
- Tremblay MS, Colley RC, Saunders TJ, et al. Physiological and health implications of a sedentary lifestyle. *Appl Physiol Nutr Metab* 2010;35:725–40.
- Statland JM, Bundy BN, Wang Y, et al. Mexiletine for symptoms and signs of myotonia in nondystrophic myotonia: a randomized controlled trial. *JAMA* 2012;308:1357–65.
- Stunnenberg BC, Raaphorst J, Groenewoud HM, et al. Effect of mexiletine on muscle stiffness in patients with nondystrophic myotonia evaluated using aggregated N-of-1 trials. *JAMA* 2018;320:2344–53.

- 32 Suetterlin KJ, Bugiardini E, Kaski JP, *et al.* Long-Term safety and efficacy of mexiletine for patients with skeletal muscle channelopathies. *JAMA Neurol* 2015;72:1531–3.
- 33 Andersen G, Hedermann G, Witting N, *et al.* The antimyotonic effect of lamotrigine in non-dystrophic myotonias: a double-blind randomized study. *Brain* 2017;140:2295–305.
- 34 Ahmed I, Chilimuri SS. Fatal dysrhythmia following potassium replacement for hypokalemic periodic paralysis. *West J Emerg Med* 2010;11:57–9.
- 35 Snyder Y, Donlin-Smith C, Snyder E, *et al.* The course and outcome of pregnancy in women with nondystrophic myotonias. *Muscle Nerve* 2015;52:1013–5.
- 36 Raja Rayan DL, Hanna MG. Managing pregnancy and anaesthetics in patients with skeletal muscle channelopathies. *Neuromuscul Disord* 2020;30:539–45.
- 37 Rudnik-Schöneborn S, Witsch-Baumgartner M, Zerres K. Influences of pregnancy on different genetic subtypes of Non-Dystrophic myotonia and periodic paralysis. *Gynecol Obstet Invest* 2016;81:472–6.
- 38 Cordina R, McGuire MA. Maternal cardiac arrhythmias during pregnancy and lactation. *Obstet Med* 2010;3:8–16.
- 39 Matthews E, Balestrini S, Sisodiya SM, *et al.* Muscle and brain sodium channelopathies: genetic causes, clinical phenotypes, and management approaches. *Lancet Child Adolesc Health* 2020;4:536–47.
- 40 Russell SH, Hirsch NP. Anaesthesia and myotonia. *Br J Anaesth* 1994;72:210–6.
- 41 Farbu E, Søfteland E, Bindoff LA. Anaesthetic complications associated with myotonia congenita: case study and comparison with other myotonic disorders. *Acta Anaesthesiol Scand* 2003;47:630–4.
- 42 Al-Takroui H, Martin TW, Mayhew JF. Hyperkalemic cardiac arrest following succinylcholine administration: the use of extracorporeal membrane oxygenation in an emergency situation. *J Clin Anesth* 2004;16:449–51.