

# The Red List of Maples

Douglas Gibbs and Yousheng Chen





**BGCI**

*Plants for the Planet*

## **BOTANIC GARDENS CONSERVATION INTERNATIONAL (BGCI)**

is a membership organization linking botanic gardens in over 100 countries in a shared commitment to biodiversity conservation, sustainable use and environmental education. BGCI aims to mobilise botanic gardens and work with partners to secure plant diversity for the well-being of people and the planet. BGCI provides the Secretariat for the IUCN/SSC Global Tree Specialist Group.



**FAUNA & FLORA INTERNATIONAL (FFI)**, founded in 1903 and the world's oldest international conservation organization, acts to conserve threatened species and ecosystems worldwide, choosing solutions that are sustainable, are based on sound science and take account of human needs.



**THE GLOBAL TREES CAMPAIGN** is a joint initiative between FFI and BGCI in partnership with a wide range of other organizations around the world. The aim of the Campaign is to save the world's most threatened trees and the habitats in which they grow through the provision of information, delivery of conservation action and support for sustainable use.



**THE IUCN/SSC GLOBAL TREE SPECIALIST GROUP** forms part of the Species Survival Commission's network of over 7000 volunteers working to stop the loss of plants, animals and their habitats. SSC is the largest of the six Commissions of IUCN-The World Conservation Union. It serves as the main source of advice to the Union and its members on the technical aspects of species conservation. The aims of the IUCN/SSC Global Tree Specialist Group are to promote and implement global red listing for trees and act in an advisory capacity to the Global Trees Campaign.

**Published by Botanic Gardens Conservation International, Richmond, UK**

© 2009 Botanic Gardens Conservation International

ISBN: 978-1-905164-31-8

Reproduction of any part of the publication for educational, conservation and other non-profit purposes is authorized without prior permission from the copyright holder, provided that the source is fully acknowledged.

Reproduction for resale or other commercial purposes is prohibited without prior written permission from the copyright holder.

The designation of geographical entities in this document and the presentation of the material do not imply any expression on the part of the authors or Botanic Gardens Conservation International concerning the legal status of any country, territory or area, or its authorities, or concerning the delineation of its frontiers or boundaries.

### **AUTHORS**

**Douglas Gibbs** is Conservation Initiatives Manager for BGCI and Secretary of the IUCN/SSC Global Tree Specialist Group.

**Yousheng Chen** is at The Institute of Botany, Chinese Academy of Sciences, Beijing and a co-author of the *Aceraceae* chapter in the *Flora of China*.

The opinion of the individual authors does not necessarily reflect the opinion of either the editors or Botanic Gardens Conservation International.

The authors and Botanic Gardens Conservation International take no responsibility for any misrepresentation of material from translation of this document into any other language.

### **COVER PHOTOS**

Front cover: *Acer griseum* by Douglas Gibbs

Back cover: *Acer kuomeii* in Pingbian County, Yunnan, China by Yousheng Chen

### **DESIGN**

John Morgan, Seascope.

Printed on 80% recycled, 20% FSC certified paper.

The Red List of

# Maples

Douglas Gibbs and  
Yousheng Chen



## CONTENTS

Acknowledgements	3
Acronyms	3
Foreword	4
Introduction	5
References	12
<b>GLOBALLY THREATENED MAPLES</b>	<b>13</b>
Maples evaluated as Least Concern	29
References	34
ANNEX 1	
IUCN Red List Categories and Criteria (Version 3.1)	38

*This publication is dedicated to Peter Wharton  
1950–2008*

## ACKNOWLEDGEMENTS

Many experts around the world have contributed information and undertaken assessments for this global evaluation and their contributions are gratefully acknowledged.

Jemima Taylor, Red Listing assistant at BGCI, carried out much of the early preparatory work for the evaluation. The University of British Columbia Botanical Garden and Centre for Plant Research, Vancouver, Canada kindly hosted the Acer Red Listing Workshop, 17–19 September 2007. Participants at the workshop included: Dr Yousheng Chen (Chinese Academy of Sciences, Beijing), Dr Jian-hua Li (The Arnold Arboretum of Harvard University), Dr P.C. de Jong (Independent Consultant, The

Netherlands), William A. McNamara (Quarryhill Botanical Garden), Douglas Justice and Peter Wharton (UBC Botanical Garden and Centre for Plant Research), Sara Oldfield and Douglas Gibbs (Botanic Gardens Conservation International).

The Mesoamerican Maples were assessed during a Red Listing workshop hosted by ECOSUR, San Cristobal de las Casas, Chiapas, Mexico, 13–15 May 2007. Participants included: Antony Challenger, SEMARNAT, Jorge A. Meave, Universidad Nacional Autonoma de Mexico, Jose Luis Leon de la Luz, CIBNOR, Rafael F. del Castillo, Instituto Politecnico Nacional, Francisco G. Lorea Hernandez, INECOL, Juan Carlos Castro,

CONANP, Mario Gonzalez Espinosa, ECOSUR, Angelica Valena, ECOSUR, Mario Ishiki, ECOSUR, Neptali Ramirez Marcial, ECOSUR, Adrian Newton, Bournemouth University, Duncan Golicher, ECOSUR.

Other experts who have contributed information include Esteban Hernández Bermejo, Botanic Garden of Córdoba (Spain), Hugh Angus, The National Arboreta (UK), Lawrence Stritch, USDA, Ikuyo Saeki, Tokyo Metropolitan University, and Dr Lillian Chua, Forest Research Institute Malaysia.

The GIS work was carried out with a copy of ArcEditor 9.3, provided by a generous ESRI Conservation Program grant.

## LIST OF ACRONYMS

<b>BGCI</b>	Botanic Gardens Conservation International
<b>CAS</b>	Chinese Academy of Science
<b>CBD</b>	Convention on Biological Diversity
<b>CONANP</b>	Comisión Nacional de Áreas Naturales Protegidas
<b>ECOSUR</b>	El Colegio de la Frontera Sur
<b>ESRI</b>	Environmental Systems Research Institute
<b>FFI</b>	Fauna & Flora International
<b>GIS</b>	Geographical Information System
<b>GSPC</b>	Global Strategy for Plant Conservation
<b>INECOL</b>	Instituto de Ecología
<b>IUCN</b>	International Union for the Conservation of Nature and Natural Resources
<b>MODIS</b>	Moderate Resolution Imaging Spectroradiometer
<b>SEMARNAT</b>	La Secretaría de Medio Ambiente y Recursos Naturales
<b>SSC</b>	Species Survival Commission
<b>UBC</b>	The University of British Columbia
<b>USDA</b>	United States Department of Agriculture
<b>VCF</b>	Vegetation Continuous Fields

## FOREWORD



*Acer granatense* (Jose Antonio Diaz)

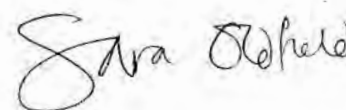
Within our gardens and natural woodlands, maples are highly valued for their autumn colour. And they provide us with so much more – timber and maple syrup are two of the economically important products provided by this group of trees. Ecologically, maples are keystone species in northern temperate forests. As with many other tree species, maples are under threat in the wild primarily as a result of forest degradation and destruction. Global climate change adds further pressure to those maples that are naturally rare or restricted to high elevations. This report presents a review of the conservation status in the wild of maples worldwide, undertaken by the IUCN/SSC Global Tree Specialist Group.

Since its establishment in 2003, the primary role of the IUCN/SSC Global Tree Specialist Group has been to assess the global conservation status of tree species in selected geographical areas and taxonomic groups. *The Red List of Maples* is the sixth publication in the series.

The collection of information on tree species of conservation concern is vital for planning conservation action. The second role of the IUCN/SSC Global Tree Specialist Group is to act as an advisory body for the Global Trees Campaign, which aims to save the world's most threatened tree species and the habitats where they grow. The Global Trees Campaign provides an important practical mechanism for implementation of the Global Strategy for Plant Conservation of the Convention for Biological Diversity. Global tree red listing contributes directly to Target 2 of the Strategy, which calls for a provisional list of threatened plant species by 2010. Target 2 underpins the other ambitious targets which relate to

*in situ* and *ex situ* conservation and sustainable use and trade in plants. Projects of the Global Trees Campaign carried out in partnership with organizations and individuals around the world help to deliver these various targets. The projects contribute to halting the loss of forest biodiversity and the provision of support to rural livelihoods.

The Global Tree Specialist Group is committed to undertaking a global assessment of the conservation status of tree species. Results of the global assessment will be published as components of the work are completed. Priorities for further work have been agreed at the first meeting of the Group held at the Morton Arboretum in Chicago in July 2009. We aim to ensure updated tree conservation data are made widely available to support tree conservation initiatives around the world. This sixth publication highlights the urgent need to take action for globally threatened maple species and the habitats where they occur.



Sara Oldfield  
Chair of the IUCN/SSC Global Tree  
Specialist Group

## INTRODUCTION

Maples are a very well known, diverse and versatile group of trees and shrubs. Famous for their autumnal colour, they draw millions of visitors each year to the natural maple woods in North America and East Asia but also to gardens and arboreta worldwide.

With a centre of diversity in China, maples range across the northern hemisphere from North America to Japan including much of Europe, the very north of Africa, the Middle East, Central Asia, Himalayas and East Asia. Although it is primarily a temperate group, a few maples grow into the tropics with *Acer laurinum* being the only maple whose range actually extends into the southern hemisphere.

With a natural distribution across the globe, maples occur in many habitats from the high altitudes of the Himalayas, to the rainforests of South East Asia, to rocky cliffs in the Mediterranean and the edge of swamps in North America. This wide range of habitats and broad geographical

distribution has resulted in a diverse group from large majestic trees to small shrubs. Leaf shape and size also varies greatly and ranges from simple 3-lobed leaves to more complex shapes with more than a dozen lobes, or compound leaves with 5–7 leaflets; with some maples being deciduous whilst others are evergreen. Although many maples are known for their autumnal leaf colour, some have distinctive and attractive bark and others also have attractive flowers.

This diversity of maples, combined with their ease of growth, has long made them extremely popular and highly valued by gardeners around the world. The natural diversity has been further enhanced by the work of horticulturists over the centuries in the production of hundreds of different cultivars particularly within a group of maples referred to as Japanese maples. *Acer palmatum* forms the richest source of Japanese maple cultivars; other maples have also been used to develop cultivars including:



*Acer triflorum* in autumn colour

(Yousheng Chen)

*Acer japonicum*, *A. pseudosieboldianum*, *A. shirasawanum*, *A. buergerianum*, *A. crataegifolium*, *A. rufinerve*, *A. truncatum*. Japanese maples are not only famous for the autumn colour, but also for their ability to grow in containers and in particular for use as Bonsai trees.

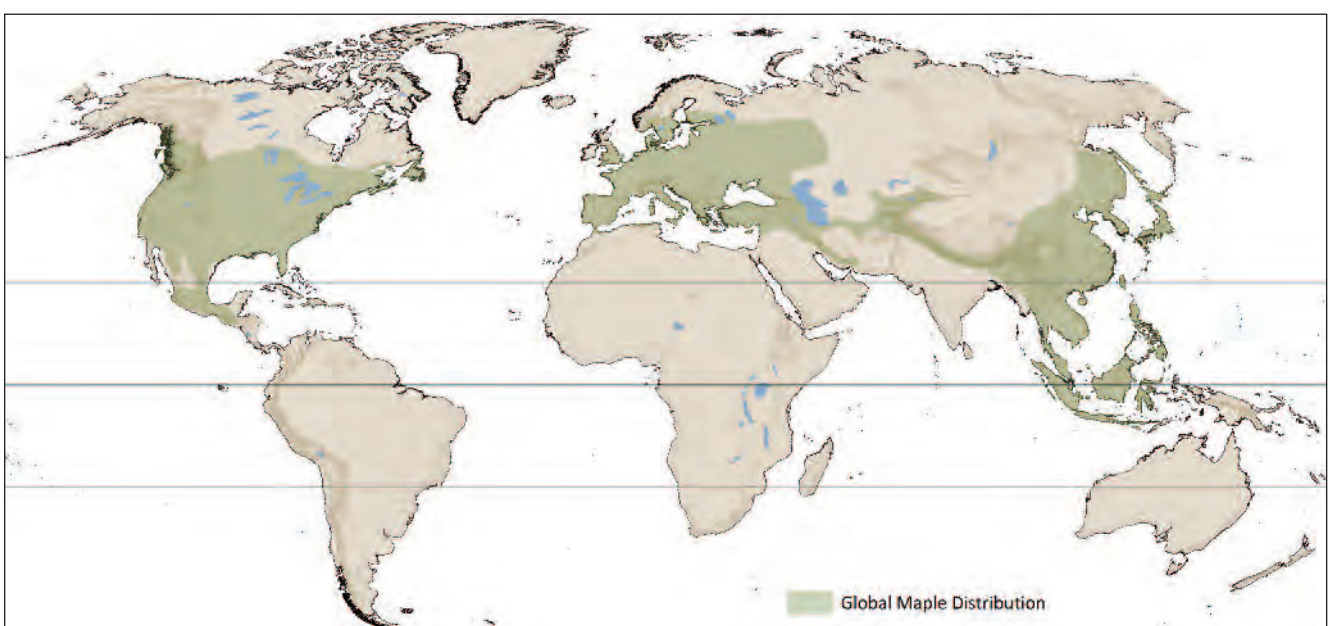


Figure 1. Global distribution of maples

### A Brief History of the Maple Collection at Westonbirt Arboretum

Many thousands of visitors flock to the UK National Arboretum at Westonbirt each October to enjoy the spectacular autumn colours of the Westonbirt maples. For botanists, the real attraction is the many maple species present – 72 of the 75 species hardy enough to grow outside in Britain. A notable feature is the sheer number of mature specimens of some species such as *Acer velutinum*, *A. cappadocicum* and *A. saccharinum*. Of the 16,500 specimens in the arboretum, almost 2,500 are maples, either scattered throughout Westonbirt's 240 hectares or part of the five grouped collections.

Sir George Holford, on joining his father as a 17-year-old, extended the arboretum into Silk Wood and created the first acer collection in 1877, consisting mainly of European species and forms. American and Asiatic species were added later as they became available. Many of the European species were grafted trees from the famous Van Volxem's German nursery. Nearly 130 years later the grafts are a perfect match.

The planting of old Acer Glade also began in 1877, using selected forms of *Acer palmatum*. Although Bruce Jackson of 'Dallimore and Jackson' fame added replacements until 1939, the old Acer Glade had begun to decline, because of age and excess shading, when the Forestry Commission acquired the arboretum and opened it to the general public in 1956.

Seed was collected from the old Acer Glade trees, resulting in 5,000 seedlings. The best 200 for autumn colour were selected to form a new Acer Glade in the early 1960's, on one side of the original glade. In the 1980's new plantings were added to create a more picturesque style.

To draw visitors away from the Acer Glades, a new collection was started in The Link in Silk Wood. A natural approach was attempted, endeavouring to select the habitat to suit the species, with a mature birch/oak overstorey. *Acer palmatum* and *Acer japonicum* cultivars and forms have been used but other maple species can also be seen in abundance.

About 1980, it was decided to establish an area beyond Broad Drive, in Silk Wood, devoted entirely to Japanese Maple cultivars. It began with the planting of well known cultivars such as *Acer palmatum* 'Osakazuki' and *Acer palmatum* 'Bloodgood', and has been slowly added to ever since. By 2009 this area had been extended considerably and Westonbirt was given National Plant Collections status for both its maple cultivar and species collections.

Today these collections have a much greater focus on the conservation of species as well as creating an attraction for many thousands of visitors. Interpreting these conservation issues to over 350,000 visitors annually is an increasingly important role for collections such as Westonbirt. They also help to facilitate the study and comparison of the different forms and species by arboriculturists, students, horticulturists and gardeners. Today the threat of climate change makes collections such as this even more important.

Hugh Angus, Westonbirt Arboretum

Many other maples which are known to horticulture are also widely available as cultivars, and a number of the currently poorly known maples could potentially become far more widely utilised following further research and cultivation.

In addition to the horticultural uses and the tourism related value of maples, this group is also of importance to the timber industry and valuable as a food. Pre-Colombian North Americans were the first to produce maple syrup from a range of maples but primarily from Sugar Maple (*Acer saccharum*), the Black Maple (*Acer nigrum*) and Manitoba Maple (*Acer negundo*). The syrup is produced by tapping the trees in late winter or early spring, collecting the sap and then removing water to concentrate the liquid. Today, Canada is the largest and most significant producer, with 22 million litres of syrup being produced in 2008, and the value of all maple products sold in 2008 being almost CAD\$212 million (Statistics Canada, 2008).



*Acer saccharum* in autumn colour  
(Westonbirt Arboretum)

A number of the larger maples are commercially grown for timber in North America and Europe: Sugar Maple (*Acer saccharum*), Black Maple (*A. nigrum*), Manitoba Maple (*A. negundo*), Red Maple (*A. rubrum*), Sycamore Maple



(*A. pseudoplatanus*). Their wood is used in construction, the manufacture of furniture and for floors, including NBA basketball court floors and bowling alley lanes. A few maples can naturally form a highly prized decorative wavy grain known as flame maple or quilt maple.

Maple wood is also valued as a tonewood, a wood that can be used in the manufacture of musical instruments, including violins, electric guitars, bassoons and double basses. The combination of the tonewood properties and the wavy grain, sometimes referred to as 'fiddleback' makes maple one of the most prized hardwoods for instruments producing a loud projective sound with an attractive finish.

### INFORMATION COLLECTION FOR CONSERVATION ASSESSMENT

The collection of information on the conservation status of Aceraceae (maples) and their evaluation against the IUCN Red List Categories and Criteria (ver. 3.1) has been a collaborative process involving botanists worldwide. The experts who have provided information and supported this process are listed in the Acknowledgements.



Young leaves of *Acer heptaphlebium*  
(Yousheng Chen)



*Acer pycnanthum* flowers (Westonbirt Arboretum)

In spite of the economic and cultural value of maples and their products, including their great interest for horticulturists, they have not been subject to a complete and recent taxonomic revision and as a result there is not a globally accepted checklist of the group. It is very important to note that it is not the intention of this publication to resolve this issue by providing a checklist of the maple family (Aceraceae). The taxonomy used in this publication is primarily based upon the account given in the *Flora of China* (Xu *et al.*, 2008) as this provides the most recent and significant published revision with over half of the family included. In addition to the *Flora of China* account, *Maples of the World* (Van Gelderen *et al.*, 1994) and a range of regional or national floras (see assessments for further details) were used to draw up the working list of maples to be evaluated against the IUCN Red List Categories and Criteria.

In total, 191 maples have been evaluated: 123 species, 20 species at the infraspecific level (66 subspecies and varieties) and the 2 species of *Dipteronia* (a closely related genus included within the maple family, Aceraceae).

A significant task in the evaluation of the maples was the development of distribution maps for the threatened taxa. For the bulk of the taxa evaluated as threatened, this is the first time that distribution maps have been published. In addition to expert opinions, a wide range of sources were consulted in the mapping process including floras, national Red Data Books, herbarium specimen databases, field notes, online taxonomic databases and the scientific literature. Naturally the amount and the accuracy of the information for each taxon varied considerably. In addition to location data points, distribution maps were developed through the use of political units (e.g. country, state, county) and biogeographic data (altitudinal range and habitat distribution) to define the potential range of a particular taxon.

A map of global forest cover obtained from satellite remote sensing imagery was used in the development of distribution maps for each species in line with the methodology developed by Adrian Newton (Cicuzza *et al.*, 2007). For this purpose, we used the Moderate Resolution Imaging Spectroradiometer



National Council for the Conservation of Plants and Gardens (NCCPG) maple collection at Westonbirt (Westonbirt Arboretum)

(MODIS) Vegetation Continuous Fields (VCF) product (Hansen *et al.*, 2003). This product depicts the percentage tree cover at a resolution of 500 m using a supervised regression tree algorithm. The data is available through the University of Maryland Global Land Cover Facility (<http://glcf.umd.edu>) and are also distributed as a MODIS land cover product. To produce the distribution map, forest was defined as those cells with at least 50 percent cover, based on the MODIS dataset, which uses a 500 m equivalent grid in geographic projection (Hansen *et al.* 2002).

For each species considered, a single potential distribution map was generated using ArcEditor 9.3 Geographic Information System (GIS) (ESRI, <http://www.esri.com/>) software. This was achieved by drawing a polygon around all of the individual locations recorded, or around the boundaries of political units or the biogeographic areas in which the species has been reported. The resulting maps indicate the current extent and distribution of forest in which each species is likely to occur.

It is important to consider a number of limitations when interpreting the results. Note that the MODIS dataset does not differentiate between secondary and primary forests, or between natural and plantation forests. Furthermore, maples are not exclusively found in forests, with some species having a preference for scrub or small forest patches which would be below the 500 m resolution of MODIS. As the current distribution of many maple species is poorly known, it is possible that populations of some species exist outside the currently known limits. In such cases, it is possible that the approach adopted here may have underestimated the current extent of distribution of some of the species considered.

The maps were used as a basis for assessing the risk of extinction, according to the IUCN Red List categories and criteria (IUCN, 2001). Application of the criteria was undertaken by the Global Trees Specialist Group. Information was assembled during a regional workshop undertaken by the Group in Canada. For the maple species known to prefer forest

habitats, the potential area of occupancy was also estimated, using GIS. The measurement is given in species summaries included in the list of globally threatened species. This potential forest distribution represents the total forest area (estimated from the MODIS data) that occurs within the altitudinal range and polygon describing the distributional range of the species. This figure is intermediate between the 'area of occupancy' and the 'extent of occurrence' used in the IUCN Red List criteria (IUCN, 2001). This is because the figure calculated here represents the total forest area occurring within the distributional range of the species; in reality, only a proportion of this forest area is likely to be occupied by the species being considered (i.e. the area of occupancy). As the current distribution and status of most maples species are poorly known, this approach was considered to provide the most accurate assessment possible with the information available.



*Acer wardii* with samaras in Fugong County, Yunnan (Yousheng Chen)

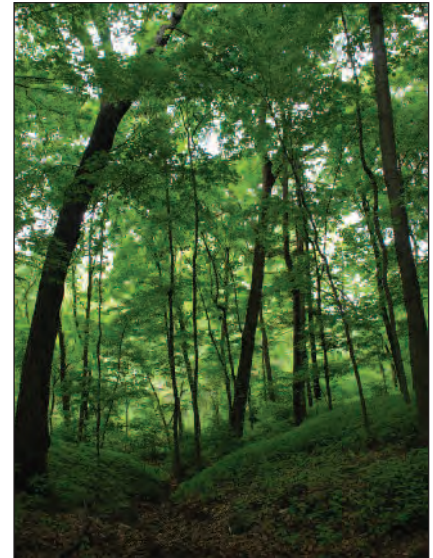
## RESULTS OF THE EVALUATION

In total, 191 maples have been evaluated: 123 at the species level, 66 at the infraspecific level of subspecies and varieties. This total also includes 2 species of *Dipteronia*, a closely related genus included within the maple family (Aceraceae) which were also assessed to complete the family. This global assessment, set against the IUCN Red List Categories and Criteria, is thus one of the first complete assessments of an entire plant family.

Since the maple family has not been the subject of a recent and comprehensive taxonomic revision, there is existing debate over some species' status. Whenever possible conservation assessments were still carried out even when there is taxonomic debate, with the alternative names or details of the debate given in the assessment. If it was not possible to carry out the full assessment due to the taxonomic debate, then the

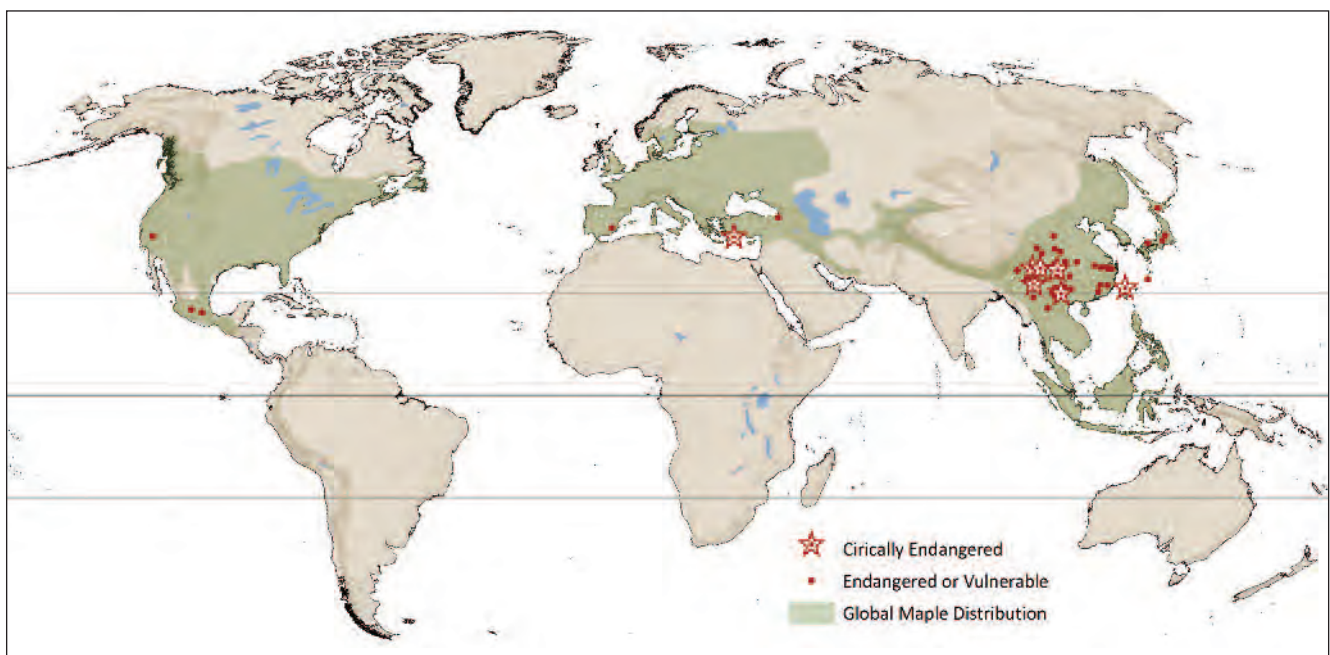
taxon has been assessed as being Data Deficient; once further research has been carried out and their taxonomic status has been defined, full assessments against the Red List Categories and Criteria should be completed. It was never the purpose of this assessment to resolve any outstanding taxonomic issues and where doubts exist, these have been indicated in the assessments whenever possible.

The results of the assessments are summarised in the table below. This indicates that of the 191 maples assessed, 54 are threatened with extinction according to the IUCN Red List categories and criteria (Critically Endangered, Endangered and Vulnerable). However, a further 29 maples could also be threatened with extinction, now or in the near future, if more were known about the Data Deficient maples or if nothing were to be done to tackle the factors threatening the remaining populations of the Near Threatened



*Maple forest (Douglas Gibbs)*

maples. This means that out of a total of 191 maples assessed, 83 are considered threatened with extinction at the global scale and therefore require conservation action now.



*Figure 2. Globally threatened maples*

## SUMMARY OF RESULTS

Conservation status	Number of maple taxa
Extinct	0
Critically Endangered	7
Endangered	19
Vulnerable	28
Near Threatened	8
Data Deficient	21
Least Concern	108

## CONSERVATION AND RESEARCH PRIORITIES

This global assessment of the maples should be used to focus and guide conservation policy and action at both the ecosystem and species level.

Urgent action is required to conserve the most threatened maples, in particular the seven Critically Endangered maples, some of which are reduced to literally a handful of individuals. Ideally all 54 threatened maples should be represented in well-managed *ex situ* collections as an

insurance policy against possible extinction. The Global Strategy for Plant Conservation (GSPC) calls for 60 per cent of all threatened plants to be conserved in *ex situ* collections; in the case of maples this equates to 33 threatened taxa. Initial analysis of BGCI's PlantSearch database indicates that botanic gardens are currently holding collections of approximately 40 per cent of all threatened maples (BGCI, 2009) compared to about 85 per cent of the Least Concern taxa. The origin and extent of these collections is not known but should be looked at to ensure that good quality *ex situ* conservation collections based on known, wild-sourced material exist.

BGCI is now undertaking a global survey of *ex situ* collections to establish and more accurately document which maples are already in collections, in order to be able to prioritise which maples to get in to well-managed *ex situ* collections. The combination of this information with details about propagation techniques will strongly support the development



*Acer griseum* bark in Chengkou County, Chongqing, China (Yousheng Chen)

of integrated conservation plans to ensure that the most threatened maples survive in the wild.

In addition to the 60 per cent of threatened species in *ex situ* collections, the GSPC also calls for 10 per cent of threatened species to be included in restoration and recovery programmes. These GSPC targets should be considered the absolute minimum level for maple conservation efforts.

Simultaneously, the status and protection of the wild maple populations needs to be reviewed and mechanisms put in place to allow local people to be involved in the *in situ* conservation and to benefit from it. It will only be through effective and well planned *in situ* conservation efforts that species can be conserved in the long term.

Further field research would greatly benefit current knowledge relating to conservation status and needs of maples. Although current field research is limited by the availability of trained botanists and resources, priorities exist.



A mature *Acer opalus*



Flowering *Acer erianthum* with seeds (Douglas Gibbs)

The Data Deficient (DD) maples all require further research to: (i) confirm their taxonomic status where this is uncertain, (ii) survey the current extent of the wild populations, and (iii) assess the threats and impacts on wild populations. Following this research, it will then be possible to complete their conservation assessments against the IUCN Red List Categories and Criteria.

With 115 maples out of the 191 included in this publication, China and in particular south west China, is the global centre of diversity for maples. However, relatively little field research has been carried out there recently and current maple experts believe that Yunnan, Sichuan and Xizang all hold great potential for the discovery of new populations and even new maples.



*Acer pictum* ssp. *taishakuense* leaves (Ikuyo Saeki)

The border region between China, Myanmar, Laos, Viet Nam and Thailand has historically been difficult to access. As a result of this, the countries bordering south west China all exhibit lower than expected numbers of maples (see

Figure 3) and therefore hold great potential for the discovery of new populations and possibly new maples. For example, the State of Yunnan in China has recorded the presence of 49 maples whilst Laos has recorded just 5 maples. Though Laos will not have a similar number of maples to Yunnan it is very likely to have more than its current records indicate.

Further research will no doubt strengthen and improve our knowledge and ability to conserve threatened maples; however sufficient knowledge exists and action needs to start now. Conservation action has already begun due to this report, for example with *Acer yangbiense*, but much remains to be done, bearing in mind that some of the most threatened maple species are reduced to just a handful of individuals in the wild.

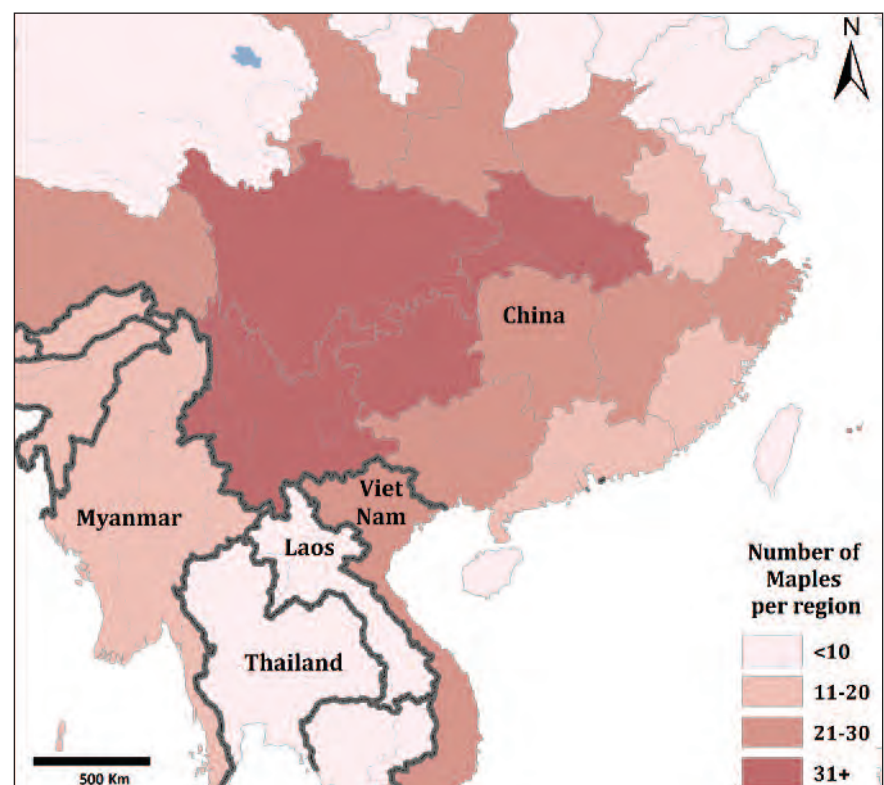


Figure 3. The number of maples per region in south east Asia

## REFERENCES

**BGCI (2009)** PlantSearch database.  
www.bgci.org/plant\_search.php  
Accessed 2/10/2009

**Cicuzza, D., Newton, A. & Oldfield, S. (2007)** *The Red List of Magnoliaceae*.  
Fauna & Flora International, Cambridge, UK.

**Hansen M.C., DeFries R.S., Townshend J.R.G., Carroll, M. Dimiceli, C. & Sohlberg R.A. (2003)** Global percent tree cover at a spatial resolution of 500 meters: First results of the MODIS Vegetation Continuous Fields algorithm. *Earth Interactions*, 7(10): 1 – 15.

**Hansen, M., DeFries, R., Townshend, J.R.G., Sohlberg, R., Dimiceli, C. & Carroll, M. (2002)** Towards an operational MODIS continuous field of percent tree cover algorithm: examples using AVHRR and MODIS data. *Remote Sensing of the Environment*, 83: 303-319.

**IUCN (2001)** *Red List categories and criteria*. Version 3.1. IUCN Species Survival Commission, Gland, Switzerland.

**Statistics Canada (2008)** *Service bulletin: Production and Value of Honey and Maple Products*, Catalogue no. 23-221-X, 6 pages.

**van Gelderen D.M., de Jong P. C. & Oterdoom H. J. (1994)** *Maples of the World*. Timber Press Inc., Portland, Oregon, U.S.A. 458pp

**Xu, T-z., Chen, Y., de Jong, P.C., Oterdoom, H.J. & Chang C-S. (2008)** *Flora of China. Volume 11, Oxalidaceae through Aceraceae*. Science Press (China) and Missouri Botanical Garden Press (USA)

*Acer sinopurpurascens* flower

(Westonbirt Arboretum)



*Dipteronia sinensis* from Taibaishan County, Shaanxi (Yousheng Chen)



## GLOBALLY THREATENED MAPLES

### *Acer acutum* Fang (1939)



VU A2c

China (Anhui, Henan, Jiangxi, Zhejiang)  
A forest species found in south-east China that has a potential forest distribution of 15,414km<sup>2</sup> although it is under significant threat due to habitat loss.

Refs: 1, 16, 30, 48

### *Acer albopurpurascens* Hayata

(1911)

DD

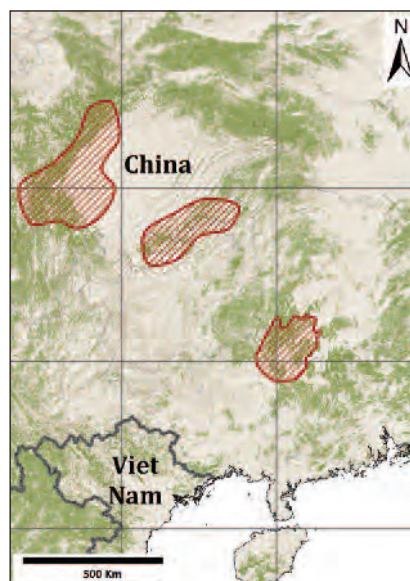
Taiwan

Thought to occur throughout the island, including within a National Park, so probably not at risk but it is listed as Vulnerable (VU) on the China Species Red List (2004).

Refs: 1, 5, 6, 16, 30, 34, 47, 48

### *Acer amplum* subsp. *catalpifolium*

(Rehder) Chen (2008)



VU A1cd

China (Guangxi, Guizhou, Sichuan)

Found scattered in mixed forest in valleys between 500-2000m in areas of high rural population. This subspecies is under pressure from felling for timber and by deforestation for agriculture.

Refs: 1, 14, 30, 34, 48

### *Acer brevipes* Gagnep (1950)

DD

Viet Nam

Refs: 30, 37

### *Acer buergerianum* var. *formosanum*

(Hayata ex Léveillé) Sasaki (1928)



CR C2a(i); D

Taiwan

Only two populations are known, confined to a small area of lowland evergreen forest in Wanli and Yingshihchien in the north of Taiwan. The species is mainly threatened by the uprooting of whole plants for ornamental use.

Refs: 1, 2, 17, 18, 30, 34

### *Acer buergerianum* var. *horizontale*

Metcalf (1942)

DD

China (Zhejiang)

There is ongoing taxonomic uncertainty about the status of some of the varieties of *Acer buergerianum*.

Refs: 1, 30

Distribution maps are provided for all the very threatened maples. Key to all maps:



Known range of species



Point locations of populations



Remaining forest cover

All assessments are by the Global Tree Specialist Group unless otherwise indicated

***Acer buergerianum* var. *jiujiangense***

Yu (1983)

DD

China (Jiangxi)

There is ongoing taxonomic uncertainty about the status of some of the varieties of *Acer buergerianum*.

Refs: 1, 30

***Acer buergerianum* var. *kaiscianense***

(Pampanini) Fang (1939)

DD

China (Gansu, Hubei, Shaanxi)

There is ongoing taxonomic uncertainty about the status of some of the varieties of *Acer buergerianum*.

Refs: 1, 30

***Acer buergerianum* var. *yentangense***

Fang & Fang (1966)



EN B1ab(iii)

China (Zhejiang)

Known from 5 collections in 3 locations in central Zhejiang at low altitudes (700-900m) in highly degraded bamboo habitat.

Refs: 1, 30

***Acer calcaratum*** Gagnepain (1948)



VU A2c

China (Yunnan), Myanmar, Thailand, Viet Nam

A subtropical acer found in scattered populations by streams in rainforests in Myanmar, Thailand and Viet Nam and near the border in the very south of Yunnan, China.

Refs: 1, 2, 16, 18, 30, 31, 34, 38, 47, 48

***Acer cappadocicum* subsp. *divergens*** (Pax) Murray (1978)



VU B1b(i,ii,iii)

Turkey

Although current populations are thought to be stable, it occurs in the Çoruh Valley on dry slopes in shrubby vegetation with an extent of occurrence of 9600km<sup>2</sup>. Many of the populations are under threat from the construction of a series of dams along the river. Rare in cultivation.

Assessor: Prof. Dr Adil Güner

Refs: 2, 10, 11, 12, 18, 22, 34, 63



*Acer cappadocicum* (Westonbirt Arboretum)

***Acer cappadocicum* subsp. *lobelii***

(Tenore) Murray (1982)

NT

Italy

Scattered distribution, locally scarce with very small populations or scattered individuals, often in marginal or unfavourable sites. Nearly meets VU A3c.

Refs: 2, 18, 23, 25, 30, 34, 47



***Acer caudatifolium*** Hayata (1911)

NT  
Taiwan  
Occurs mainly in montane forests at 2500-3000m, but can also be found at lower elevations. Nearly meets VU A2c; listed as Vulnerable on the China Species Red List (2004). A snakebark maple with attractive stripped bark but rare in cultivation, partly due to its tenderness.  
Refs: 1, 2, 6, 16, 18, 22, 30, 34, 47, 48

***Acer chienii*** Hu & Cheng (1948)



VU D2  
China (Yunnan)  
Very limited distribution, currently known from just 3 locations in north-west Yunnan.  
Refs: 1, 16, 30, 34, 48

***Acer chingii*** Hu (1930)

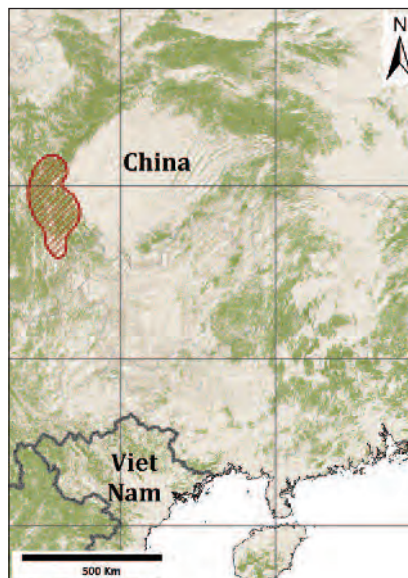
DD  
China (Guangxi, Guizhou)  
Only known from type specimen; thought to be found in restricted locations in forested low montane areas which also have high rural populations.  
Refs: 1, 30, 48

***Acer chunii*** subsp. ***chunii*** Fang (1937)



VU D2  
China (Fujian, Guangdong)  
Known from 3 locations in northern Guangdong and Fujian in sparse forests between 800-1200m.  
Refs: 1, 30

***Acer chunii*** subsp. ***dimorphophyllum*** Fang (1979)



VU D2  
China (Sichuan)  
A rare species found in 3 localities in sparse forests between 1000-2500m in south-west Sichuan.  
Refs: 1, 30

***Acer confertifolium*** Merrill & Metcalf (1937)



VU A2c  
China (Fujian, Guangdong, Jiangxi)  
Quite limited distribution, in south-east China at relatively low elevations, and under threat from increased urbanisation.  
Refs: 1, 2, 16, 30, 48

***Acer crassum*** Hu & Cheng (1948)



EN B1ab(iii)

China (Yunnan)

The species is found in a small area of south-east Yunnan, with an area of occupancy of 140km<sup>2</sup> and is under pressure from ongoing deforestation. It has not been collected since 1940.

Refs: 1, 2, 16, 30, 48

***Acer duplicatoserratum*** var. *duplicatoserratum* Hayata (1911)

DD

Taiwan

Populations of this species are scattered in central to northern parts of Taiwan in submontane broadleaved forest. The decline in numbers has been caused by the illegal digging up of whole plants for the ornamental trade. However some taxonomic uncertainty exists as this taxon is close to *Acer ceriferum* which in this publication is treated as a synonym of *Acer robustum*, further taxonomic research is required (Xu *et al.*, 2008).

Refs: 1, 2, 17, 30, 34

***Acer erythranthum*** Gagnepain (1948)

NT

Viet Nam

Occurs in Thua Thien-Hue, Gia Lai, Kon Tum and Lam Dong Provinces, usually in evergreen forests above 500m on deep fertile soils. Natural regeneration does not appear to be good, despite good fruiting crops. The fine timber is used for construction and making household items. Nearly meets VU A2c.

Refs: 2, 17, 34, 36, 37

***Acer fenzelianum*** Handel-Mazzetti (1933)



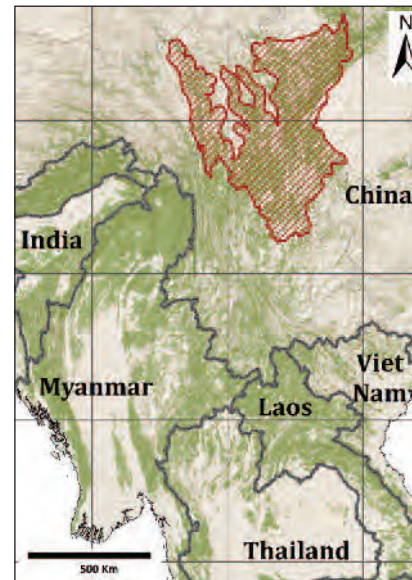
VU B1ab(ii)

China (Yunnan), Viet Nam

The species has a very restricted distribution in forested valleys in northern Viet Nam and southern Yunnan, with an extent of occurrence of 16,374km<sup>2</sup>. Very few specimens have been recorded. It is listed as Endangered in China.

Refs: 1, 2, 16, 30, 48

***Acer fulvescens*** Rehder (1911)



VU A2c

China (Sichuan, Xizang)

The species is found in forests in Sichuan and south-east Xizang between 1800-3200m but is under pressure from habitat loss.

Refs: 1, 16, 30

***Acer glabrum*** var. *greenei* Keller (1942)



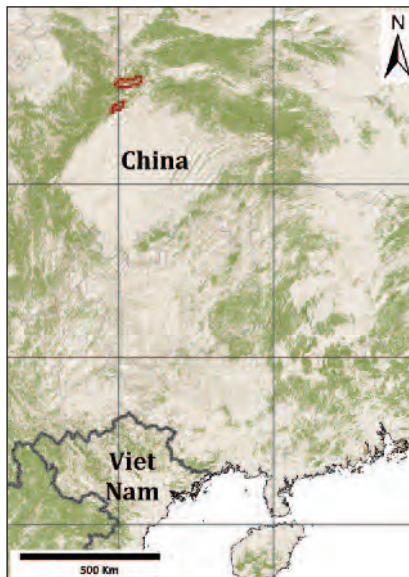
VU B1ab(i,iii)

United States of America (California)

*Acer glabrum* var. *greenii* is considered endemic to the southern Sierra Nevada in California, especially in Tulare County, occurring on moist to fairly dry rocky mountain slopes and in canyons. It is listed as Critically Imperiled (T1T2) by NatureServe and is under threat from wildfires and intrinsic factors such as poor regeneration.

Refs: 7, 8, 30, 45, 64

*Acer gracilifolium* Fang & Fu (1981)



EN B1ab(ii)+2ab(ii)

China (Gansu, Sichuan)

Known from 2 localities in mixed forest near streams in south-east Gansu and northern Sichuan with a total area of occupancy of 490km<sup>2</sup>.

Refs: 1, 16, 30, 48

*Acer granatense* Boissier (1838)



VU B1b(iii,v)

Morocco, Spain

Also known as *Acer opalus* ssp. *granatense* (Boiss.) Font Quer & Rothm. and considered by some to be a synonym of *Acer hispanicum* Pourret, this species has a fragmented distribution along several mountain ranges, often found in microsites where the Mediterranean summer drought is partially ameliorated such as north-facing slopes, shady ravines and along streams. Successful regeneration is often hindered due to grazing pressure.

Refs: 3, 24, 27, 28, 29, 34, 50, 60



*Acer griseum* Leaves (Douglas Gibbs)

*Acer griseum* (Franchet) Pax (1902)



EN A2c

China (Gansu, Henan, Hubei, Hunan, Shaanxi, Shanxi, Sichuan)

The Paperbark Maple is well known to horticulture and is considered to be one of the most outstanding *Acers*, despite being difficult to propagate either by seed or vegetative methods. It is naturally found over a wide area of central China, but the population is now very fragmented, small and in decline.

Refs: 1, 2, 16, 18, 22, 30, 34, 47, 48

*Acer heptaphlebium* Gagnep. (1931)

DD

Lao People's Democratic Republic, Viet Nam

A low elevation species which is possibly threatened but needs further study to establish its conservation status.

Refs: 2, 34, 37

***Acer hilaense*** Hu & Cheng (1948)

DD

China (Yunnan)

Collected once in 1938 and has not been seen since. The area is now degraded habitat and has been widely explored, but *Acer hilaense* has not specifically been looked for. It is an evergreen species and has a high horticultural value. Potentially it could be Critically Endangered or Extinct in the Wild. Listed as *Acer hilaense* and Critically Endangered in Chinese Species Red List (2004).

Refs: 1, 16, 30, 48

***Acer komarovii*** Pojarkova (1949)

DD

China (Jilin, Liaoning), Democratic People's Republic of Korea, Russian Federation

Taxonomically this species remains uncertain, it may be a synonym of *Acer tschonoskii* ssp. *koreanum*, see the entry for *A. tschonoskii* (Least Concern) for details.

Refs: 1, 30, 34, 47, 48

***Acer kungshanense*** Fang & Chang (1966)



VU A2c

China (Yunnan)

Found in valleys with mixed forests between 2000-3200m in north-west and southern Yunnan and under threat from habitat degradation and loss.

Refs: 1, 16, 30, 47

***Acer kuomeii*** Fang & Fang (1966)

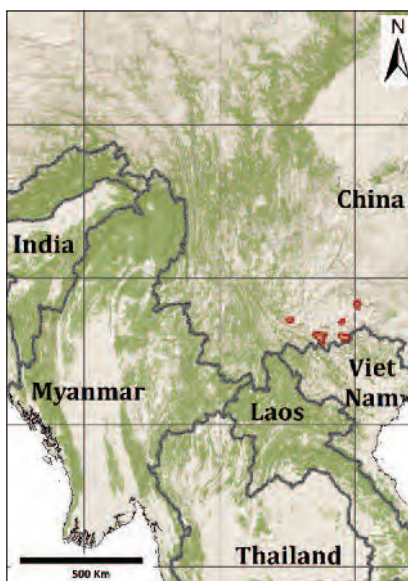
NT

China (Guangxi, Yunnan), Viet Nam

Seems to be locally abundant in one valley in southern Yunnan but has a limited range overall which includes one locality in Viet Nam, six counties in Yunnan and one county in Guangxi. Nearly meets VU A2c.

Refs: 1, 2, 30, 48

***Acer kwangnanense*** Hu & Cheng (1948)



EN B1ab(iii)

China (Yunnan)

Recorded from 5 collections from mixed forests in a small area of degraded terrain in southern Yunnan, with an area of occupancy of 444km<sup>2</sup>. Some researchers believe that the species is possibly also found across the border in northern Viet Nam, but this remains unconfirmed.

Refs: 1, 16, 30, 48

***Acer kweilinense*** Fang & Fang (1966)

NT

China (Guangxi, Guizhou)

With a relatively small distribution this species is found in sparse forests in Northeast Guangxi and Southeast Guizhou, nearly meets VU A2c. It may also be found in Hunan, China.

Refs: 1, 2, 30, 48

***Acer leipoense*** Fang & Soong (1966)



CR A2c

China (Sichuan)

The species is found in mixed montane forests (2000-2700m) in south-west Sichuan, with an area of occupancy of 1772km<sup>2</sup>. It has not been seen recently in Baoxing, Tianquan and Leipo counties where it has been recorded to occur in the past. However a population has recently been recorded in a valley within a protected area in Ebian County.

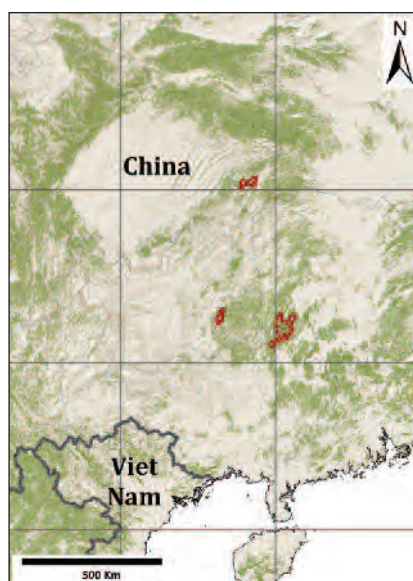
Refs: 1, 2, 16, 30, 48

***Acer linganense*** Fang & Chiu (1979)



VU A2c  
 China (Anhui, Zhejiang)  
 Although the species does occur in protected areas, the population is declining due to a range of threats including pollution. There is some debate about the taxonomic status of the species and its relationship to *A. robustum*; further taxonomic research is required (Xu *et al.*, 2008).  
 Refs: 1, 2, 16, 30, 48

***Acer lungshengense*** Fang & Hu (1966)



VU B1ab(ii)+2ab(ii)  
 China (Guangxi, Guizhou, Hubei, Hunan)  
 Recorded from 3 localities, with a total area of occupancy of 1160km<sup>2</sup>, in valleys within mixed forests in south-central China.  
 Refs: 1, 16, 30, 48

***Acer metcalfii*** Rehder (1933)

NT  
 China (Guangdong, Guangxi, Guizhou, Hunan), Viet Nam  
 This snakebark maple nearly meets VU A2c; listed as Vulnerable in the Chinese Species Red List (2004).  
 Refs: 1, 16, 30, 34, 48

***Acer miaoshanicum*** Fang (1966)

DD  
 China (Guangxi, Guizhou)  
 A subtropical acer collected only twice and some taxonomic debate exists around the status of the species.  
 Refs: 1, 2, 22, 30

***Acer miaotaiense*** Tsoong (1954)



VU A2c  
 China (Gansu, Henan, Hubei, Shaanxi, Zhejiang)  
 The species exists in fragmented populations with few individuals across its remaining range. Poor regeneration as well as habitat degradation and loss, due to a range of factors including drought, is threatening this species in the wild. This species is very close to *A. miyabei*, with which it has much in common; some taxonomists consider it a subspecies of *A. miyabei*.  
 Refs: 1, 14, 16, 17, 30, 34, 47, 48

***Acer miyabei* var. *miyabei***

Maximowicz (1888)



EN C1  
 Japan (Hokkaido, Honshu)  
 The distribution is restricted in the Hidaka and the Ishikari districts of Hokkaido, the northern half of Iwate Prefecture, and the northern part of Akita prefecture of northern Honshu, and several isolated populations have been reported from Nagano and Fukushima prefectures. The estimated remaining 700 mature individuals are threatened by habitat loss from logging, land development, and road construction.  
 Assessor: Dr Ikuyo Saeki  
 Refs: 2, 9, 18, 30, 34, 46, 56, 58, 66

*Acer miyabei* var. *shibatai* (Nakai)  
Hara (1951)



EN C1

Japan (Honshu)

Restricted to several localities in moist, somewhat swampy and flat places such as stream sides and lower montane slopes from cool temperate to subalpine areas of Central Honshu in Fukushima, Gunma and Nagano Prefectures. It is threatened by habitat loss and degradation but is protected in at least two locations.

Assessor: Dr Ikuyo Saeki

Refs: 46, 56, 58, 67



*Acer miyabei* leaves (Douglas Gibbs)

*Acer morrisonense* Hayata (1911)



VU A2c

Taiwan

This snakebark maple is found in mixed forests at medium altitude (1800-2200m) on Taiwan but is under some pressure from habitat degradation and loss. There is some debate on its taxonomy and its relationship with *Acer caudatifolium*, which some consider it to be a synonym.

Refs: 1, 5, 6, 16, 18, 30, 34, 47, 48

*Acer negundo* subsp. *mexicanum*  
(DC.) Wesmael (1890)



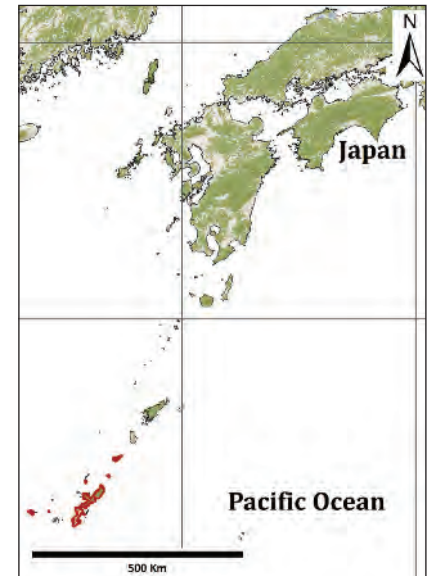
VU B2ab(ii,iii)

Guatemala, Mexico

The subspecies is found in cloud and oak forests, between 1500-2400m, often along rivers and streams but it is not abundant across its range and does not form pure stands. Throughout its range it is under threat from habitat loss and degradation. It is a protected species in Mexico and listed as a Category 2 threatened species by CONAP (Consejo Nacional de Áreas protegidas) in Guatemala.

Refs: 2, 17, 18, 21, 30, 39, 40, 41, 49

*Acer oblongum* var. *itoanum* Hayata  
(1911)



EN B1b(i,ii,iii); C1+2a(i)

Japan (Nansei-Shoto)

Found in subtropical evergreen forests on only six islands of Ryukyu (i.e. Oki-erabu, Yoron, Okinawa, Izena, Tonaki, and Kume, in Kagoshima and Okinawa prefectures), Japan (Shimabuku 1997). Under continued threat from habitat loss and quality due to land development, road construction and forest harvesting.

Assessor: Dr Ikuyo Saeki

Refs: 2, 9, 18, 30, 46, 56, 57, 69

*Acer oblongum* var. *omeiense* Fang & Soong (1979)



EN B1ab(iv)  
 China (Sichuan)  
 An evergreen acer recorded in a protected area in Sichuan which is also a popular tourist site and is under threat from associated impacts including hotel construction.  
 Refs: 1, 22, 30

*Acer oligocarpum* Fang & Hu (1979)  
 DD  
 China (Xizang, Yunnan)  
 Refs: 1, 2, 30



*Acer pentaphyllum* leaves and seeds in Muli County, Sichuan (Yousheng Chen)

*Acer paihengii* Fang (1966)



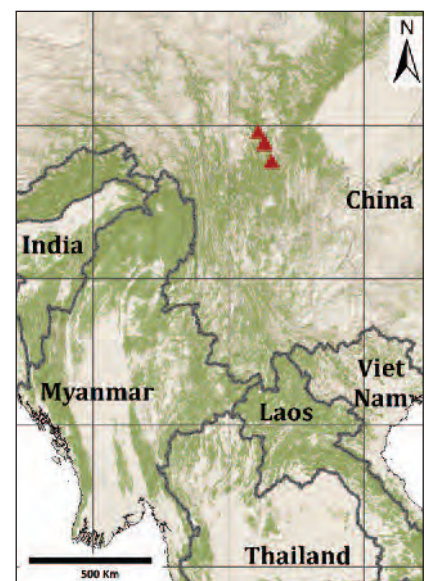
CR B1ab(iv,v)+2ab(iv,v)  
 China (Yunnan)  
 Occurs in broad-leaf forests on limestone and has a very restricted distribution in south-east Yunnan, with an area of occupancy of 8km<sup>2</sup>.  
 Refs: 1, 16, 30, 34, 48

*Acer pauciflorum* Fang (1932)



EN A2cd  
 China (Anhui, Fujian, Zhejiang)  
 An attractive species which occurs in open degraded woodland in southern Anhui and Zhejiang at 500-1000m; it is under pressure from continued habitat loss and degradation.  
 Refs: 1, 2, 16, 18, 30, 34, 48

*Acer pentaphyllum* Diels (1931)



CR C1  
 China (Sichuan)  
*Acer pentaphyllum* Diels. (CR C1) is a very rare maple. Despite its tenderness it is highly valued by maple collectors for its deep green five-lobed leaves and elegant form. It first came to the attention of western botanists when it was documented by Joseph Rock in 1929 during a National Geographic sponsored expedition to China. Found only in a series of high altitude valleys between 2300 and 2900m near Muli in south west Sichuan, the four small populations consist of fewer than 200 trees.

Of the four populations, two will be submerged if planned dam construction goes ahead and a third is already under significant threat due to the construction of a new road directly through it. In addition to these threats, the populations

are all thought to be under pressure from overgrazing, firewood collection and increasing rural populations. The fourth population has not been visited recently, but it too is thought to be at risk.

The regeneration of the populations is currently very poor, which is possibly due to grazing pressure since the trees are producing good viable seed but these fail to establish. With some degree of protection from grazing it is believed that these populations could recover to a degree, however the additional threat from construction projects remains. An integrated conservation plan for the species involving all the stakeholders in the area is urgently needed.

Refs: 1, 2, 16, 18, 19, 22, 30, 34, 48

***Acer pentapomicum*** Stewart ex Brandis (1874)

DD

Afghanistan, India, Pakistan, Tajikistan  
This species occurs over a wide area but is thought to be locally scarce and is not currently known in cultivation.

Refs: 2, 18, 20, 30, 34, 35, 44

***Acer pictum*** subsp. ***pubigerum*** (Fang) Chen (2008)



VU A2c

China (Anhui, Zhejiang)

Recorded from broadleaf forests between 700-1200m in southern Anhui and Zhejiang. It is known to occur in protected areas, but outwith these it is under threat from urbanisation and human pressure leading to habitat loss and degradation.

Refs: 1, 30

***Acer pictum*** subsp. ***taishakuense*** (Ogata) Ohashi (1993)



VU D1+2

Japan (Honshu)

Although the subspecies occurs within a protected area, it has a very small population with possibly fewer than 1000 mature trees in an extremely restricted distribution on limestone along Taishaku-kyo valley (Hiroshima prefecture, western Honshu, Japan).

Assessor: Dr Ikuyo Saeki

Refs: 9, 30, 56, 58, 59, 70

***Acer pilosum*** Maximowicz (1880)



VU A2c

China (Gansu, Nei Mongol, Ningxia, Shaanxi, Shanxi)

Occurs in low rainfall area, along the Yellow River, at risk from desertification, falling water table and browsing animals. There have been no recent collections (since 1950) and further investigation is needed.

Refs: 1, 2, 16, 30, 48

***Acer pinnatinervium*** Merrill (1941)





VU A2c

China (Xizang, Yunnan), India, Lao People's Democratic Republic, Myanmar, Thailand, Viet Nam

Occurs from Xizang in China to Thailand in mixed forests over a broad altitudinal range (500-2400m) but under threat from habitat loss; recorded as Endangered in China. It is also likely to be found in northern Laos, but is currently unrecorded there.

Refs: 1, 15, 30, 47, 48



*Acer pinnatinervum* in Gongshan County, Yunnan (Yousheng Chen)

***Acer platanoides*** subsp.

***turkestanicum*** (Pax) de Jong (1988)

DD

Afghanistan, Islamic Republic of Iran, Pakistan, Tajikistan, Turkmenistan, Uzbekistan

This acer is rare in cultivation and thought to be rare in the wild. However there is a lack of sufficient field data to fully assess the current conservation status.

Refs: 2, 3, 18, 20, 30, 34, 35, 43, 44

***Acer poliophyllum*** Fang & Wu (1979)



EN A2c

China (Guizhou, Yunnan)

Fragmented distribution in degraded mixed forests in south-west Guizhou and south-east Yunnan, China, between 1000-1800m with an area of occupancy of 1386km<sup>2</sup>.

Refs: 1, 16, 30, 48

***Acer pubipetiolatum*** var.

***pingpienense*** Fang & Hu (1966)



VU A3c

China (Guizhou, Yunnan)

Recorded from 3 localities in south-west Guizhou and Yunnan. Occurs on limestone slopes between 800-1500m in degraded habitat with an area of occupancy of 2880km<sup>2</sup>.

Refs: 1, 30

***Acer pubipetiolatum*** var.  
***pubipetiolatum***



VU A2c

China (Yunnan)

Recorded from 6 locations in western Yunnan in valleys between 1900-2600m in degraded mixed forests.

Refs: 1, 30



*Acer pycnanthum* flowers

(Westonbirt Arboretum)

***Acer pycnanthum*** Koch (1864)



VU C1

Japan (Honshu)

A rare acer primarily restricted to discrete seepage and floodplain ecosystems in Gifu, Nagano and Aichi prefectures around Mount Ena but also found in Omachi City, Nagano prefecture. There are an estimated 1000 mature individuals remaining distributed between approximately 60 localities. The size of individual populations is typically small – often less than 20 individuals, with the largest consisting of just 300. These populations are under threat from habitat loss to development and expansion of commercial forestry.

Assessor: Dr Ikuyo Saeki

Refs: 2, 9, 18, 30, 34, 46, 47, 51, 52, 53, 54, 55, 68

***Acer shihweii*** Chun & Fang (1966)

DD

China (Guizhou)

Only known from one collection and further research is required to confirm its taxonomic status. However, it is listed as Critically Endangered in the Chinese Species Red List (2004).

Refs: 1, 2, 16, 30, 48

***Acer sikkimense*** Miquel (1867)

DD

Bhutan, China (Xizang, Yunnan), India, Myanmar, Nepal, Viet Nam

A snakebark maple which is considered Vulnerable in China, but also found in additional countries where its conservation status is unknown.

Refs: 1, 2, 4, 16, 18, 30, 34, 47, 48

***Acer sino-oblongum*** Metcalf (1932)



EN B1ab(iii)+2ab(iii)

China (Guangdong)

An evergreen acer which occurs at low altitudes (0-200m) and is only known from 5 populations in Guangdong. Due to proximity of the populations to urban areas and the coast, urbanisation and habitat loss are the main threat to the remaining area of occupancy (442km<sup>2</sup>).

Refs: 1, 2, 16, 18, 30, 34, 47, 48



*Acer sinopurpurascens* leaves

(Westonbirt Arboretum)

***Acer sinopurpurascens*** Cheng (1931)



VU A2c

China (Anhui, Hubei, Jiangxi, Zhejiang)

An acer with a fragmented distribution in mixed forests between 700-1000m across a heavily developed area of south east China. It is difficult to propagate and is rare in cultivation but is noted for its flowers.

Refs: 1, 2, 16, 30, 34, 48

***Acer skutchii*** Rehder (1936)



EN B2ab(ii,iii,iv)

Guatemala, Mexico (Chiapas, Coahuila, Jalisco, Tamaulipas)

Occurs as 5 disjunct populations, 4 in Mexico and 1 in Guatemala in cloud forest and along rivers in rainforest. Local uses include it as a source of sugar and also for construction. Previously known as and still considered by some to be *Acer saccharum* ssp. *skutchii*. Listed as threatened in Mexico and as a Category 2 threatened species by CONAP (Consejo Nacional de Áreas protegidas) in Guatemala.

Refs: 18, 30, 32, 33, 34, 40, 41, 47, 49

*Acer sutchuenense* Franchet (1894)



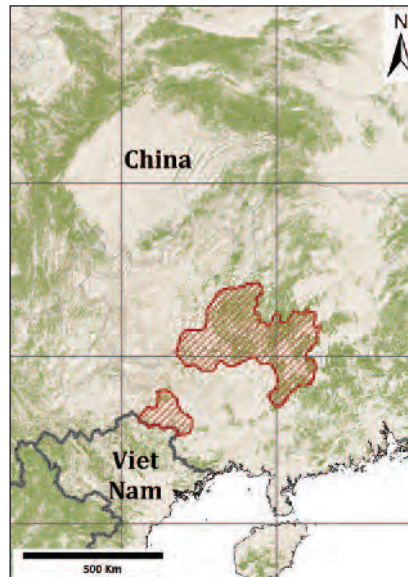
EN A2c

China (Hubei, Hunan, Sichuan)

Occurs in small fragmented populations in central China, some of which occur in protected areas of mixed forests between 1000-2500m.

Refs: 1, 2, 16, 18, 30, 47, 48

*Acer sycopseoides* Chun. (1932)



EN A2c

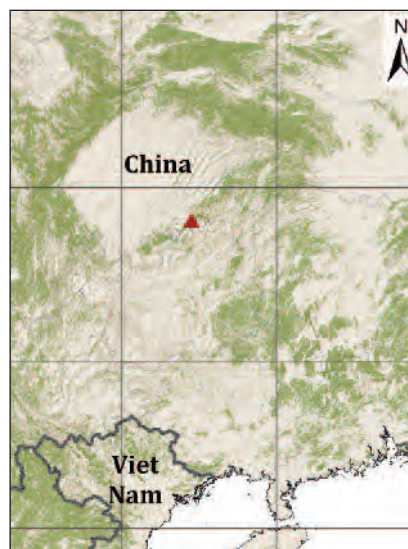
China (Guangxi, Guizhou)

Recorded from forests in small populations at relatively low altitudes and under threat from habitat loss and degradation. Has not been collected recently although it has been looked for, but more extensive search is required before revising its conservation status higher than Endangered.

Refs: 1, 2, 16, 30

*Acer tenellum* var. *septemlobum*

(Fang & Soong) Fang & Soong (1979)



CR B1ab(ii,v)+2ab(ii,v)

China (Sichuan)

Found in very small population in mixed forests between 1400-1700m, in Nanchuan County of Sichuan with an area of occupancy of 9km<sup>2</sup>. The area is heavily developed and there is considerable pressure on the remaining population; it is not known in cultivation.

Refs: 1, 2, 16, 30, 48

*Acer tenellum* var. *tenellum* Pax

(1889)



EN A2c

China (Hubei, Sichuan)

Recorded from very small populations in mixed forests in valleys between 1200-1900m in western Hubei and eastern Sichuan. It is not known in cultivation.

Refs: 1, 30, 48



*Acer tenellum samara* (Westonbirt Arboretum)

***Acer thomsonii*** Miquel (1867)

DD

Bhutan, China (Xizang, Yunnan), India (Assam, Manipur, Sikkim), Myanmar, Nepal, Thailand

Listed as Critically Endangered in China, however this represents only a minor part of the full range of the species.

Refs: 1, 4, 15, 16, 18, 30, 38, 48



*Acer thomsonii* (Yousheng Chen)

***Acer tibetense*** Fang (1939)



EN B2ab(ii)

China (Xizang)

Recorded from a single county in south-east Xizang in mixed forests in valleys between 1600-2700m. There have been no recent expeditions to the area to confirm in detail its current status, but with an area of occupancy of 410km<sup>2</sup> and deforestation occurring in the area, the species is threatened.

Refs: 1, 2, 16, 30, 48

***Acer tonkinense*** Lecomte (1912)

NT

China (Guangxi, Guizhou, Xizang, Yunnan), Lao People's Democratic Republic, Myanmar, Thailand, Viet Nam Not common in China, where it occurs mostly outwith the protected area system and in agricultural areas, and is listed as Endangered. Also found in Myanmar, Thailand and northern Viet Nam, it is also likely to be found in Laos. It can be locally abundant but has a restricted distribution and under pressure from land use changes. The species nearly meets VU A2c.

Refs: 1, 2, 16, 30, 34, 37, 47, 48

***Acer triflorum*** Komarov (1901)

DD

China (Heilongjiang, Jilin, Liaoning), Democratic People's Republic of Korea, Republic of Korea

Some wild populations are threatened by poor seed viability. The species is listed as Vulnerable in China but occurs elsewhere.

Refs: 1, 2, 16, 18, 30, 34, 47, 48

***Acer tsinlingense*** Fang & Hsieh (1966)



*Acer tsinlingense* in Zhuxi County, Hubei (Q. L. Gan)

VU A2c

China (Gansu, Henan, Shaanxi)

Occurs in sparse forests between 1200-1500m in south-east Gansu, south-west Henan and Shaanxi, in an area of habitat degradation and loss. The species is similar to *Acer sterculiaceum* ssp. *franchetii* and there is debate over its taxonomic status (Xu *et al.*, 2008).

Refs: 1, 16, 30, 34

***Acer tutcheri*** var. ***shimadai*** Hayata

(1911)

DD

Taiwan

Very few herbarium specimens are known and there is some uncertainty about its current taxonomic status.

Refs: 1, 2, 30

***Acer undulatum*** Pojark



CR B1ab(iii,v)+2ab(iii,v)

Turkey

Only known from one location; the top of Babadag Mountain near Fethiye in the province of Mugla, Turkey. With Fethiye being one of the top tourist destinations in Turkey and Babadag Mountain also being popular, combined with the species having an extent of occurrence of approximately 10km<sup>2</sup> - the species is of serious conservation concern. Further taxonomic research is required in order to confirm *Acer undulatum* is distinct from *Acer hyrcanum*.

Assessor: Prof. Dr Adil Güner

Refs: 12, 13, 65

***Acer wangchii*** Fang (1966)

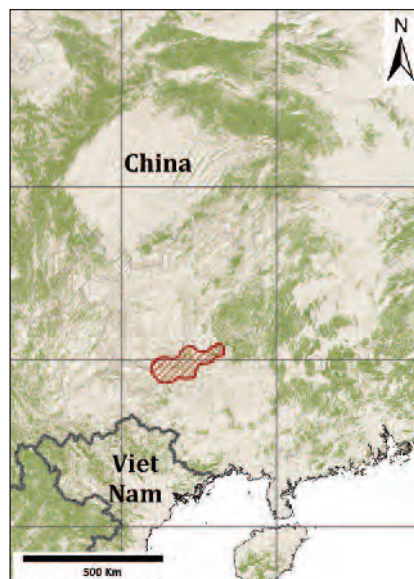
VU B1ab(iii)

China (Guangxi, Guizhou)

A very rare species known from 4 collected specimens in northern Guangxi and Guizhou. Occurs in an area of high habitat disturbance with an extent of occurrence of 18,940km<sup>2</sup>. Further research would help establish whether this species is more threatened than Vulnerable. Listed as *Acer wangii* and Endangered by Chinese Species Red List (2004).

Refs: 1, 2, 16, 30, 48

***Acer wardii*** Smith (1977)



DD

China (Xizang, Yunnan), India (Assam), Myanmar

A snakebark maple listed as Endangered in China, but also found in India and Myanmar.

Refs: 1, 2, 15, 16, 18, 30, 47

***Acer yangbiense*** Chen & Yang (2003)



CR B1ab(v)+2ab(v); D

China (Yunnan)

The highly threatened Yangbi Maple (*Acer yangbiense* Chen & Yang) is one of the newest maples to be named by scientists, and was only described in 2003. With a very restricted distribution, it is only known from a single area in a valley on the western slopes of Mt. Cangshan, Yangbi, northwest Yunnan, China. When the site was visited in 2002, the population consisted of no more than 10 trees near a small village. However when the location was revisited in 2007, only 4 trees were found to remain scattered in secondary forest.

In the spring of 2008, Yousheng Chen carried out hand pollination trials on the 4 Yangbi Maples. When the site was revisited later in 2008, it was found that the pollination had been successful with significant seed set. Some 3000 seeds were then collected for germination trials



*Acer yangbiense* seedlings in Beijing Botanic Garden (Yousheng Chen)

at both Beijing Botanic Garden and Kunming Botanic Garden to establish an *ex situ* conservation programme. By February 2009, germination had been very successful at both gardens making the future of the Yangbi Maple far more secure. Further research on these seedlings is currently being carried out to better understand the species and its genetic variation with the view to supporting reinforcement of the natural population and the long term conservation of this highly threatened maple.

Refs: 1, 16, 30, 48, 61, 62

***Acer yinkunii*** Fang (1966)

DD

China (Guangxi)

The species description is currently based on a single specimen and taxonomically it is close to *Acer fabri*. If the taxonomy is confirmed, it is likely that it is Endangered and is already so listed by the Chinese Species Red List (2004).

Refs: 1, 2, 16, 30, 48

*Acer yui* Fang (1939)



EN B2ab(ii,iv)

China (Gansu, Sichuan)

Recorded from mixed forests in valleys in southern Gansu and north-west Sichuan between 1800-2000m. The species has a fragmented distribution with an area of occupancy of 366km<sup>2</sup> and is under threat from continued habitat degradation and loss.

Refs: 1, 2, 16, 30, 48

*Dipteronia dyeriana* Henry (1903)



EN B1ab(i,ii,iv)+2ab(i,ii,iv)

China (Yunnan), Viet Nam

*Dipteronia* species are closely related to acers and are placed in the same family (Aceraceae). This species is recorded from forests between 2000-2500m in south-east Yunnan. The fragmented population has an area of occupancy of 296km<sup>2</sup>, potentially its distribution could extend in to northern Viet Nam. The species is under threat from extensive deforestation; it is grown for its ornamental value and as a source of oil.

Refs: 1, 14, 16, 30, 34, 48

*Dipteronia sinensis* Oliver (1889)

NT

China (Gansu, Guizhou, Henan, Hubei, Hunan, Shaanxi, Shanxi, Sichuan)

Occurs in scattered populations in mountane areas of central and south-west China. It is under threat from deforestation and poor regeneration. It nearly meets VU A2c.

Refs: 1, 14, 16, 18, 30, 34, 48



*Dipteronia sinensis* leaves (Douglas Gibbs)

## MAPLES EVALUATED AS LEAST CONCERN

***Acer acuminatum*** Wallich ex D. Don (1825)  
China, India, Nepal, Pakistan  
Refs: 1, 2, 4, 18, 20, 30, 34, 35, 48

***Acer amplum*** subsp. ***amplum***  
China  
Refs: 1, 30, 34, 48

***Acer amplum*** subsp. ***bodinieri***  
(Léveillé) Chen (2008)  
China, Viet Nam  
Refs: 1, 30, 34, 48

***Acer amplum*** subsp. ***tientaiense***  
(Schneider) Chen (2008)  
China  
Although few specimens have been collected, it is thought to be widespread and relatively common.  
Refs: 1, 18, 30, 34

***Acer argutum*** Maximowicz (1867)  
Japan  
Refs: 2, 9, 18, 30, 34, 47

***Acer barbatum*** Michx. (1803)  
United States of America  
Refs: 2, 18, 30, 34, 45, 47

***Acer barbinerve*** Maximowicz ex Miquel (1867)  
China, Democratic People's Republic of Korea, Russian Federation  
Closely related to *Acer argutum* and recorded as Near Threatened on the China Species Red List (2004), but also found in Russia and North Korea. Not thought to be common in cultivation.  
Refs: 1, 2, 16, 18, 30, 34, 47, 48

***Acer buergerianum*** var. ***buergerianum***  
Miquel (1865)  
China  
An important species to horticulture in China, Japan, Korea and Taiwan where it is used in gardens, landscaping and bonsai.  
Refs: 1, 2, 18, 30, 34

***Acer caesium*** Wallich ex Brandis (1874)  
China, India, Nepal, Pakistan  
Occurs in mountain forests in Sichuan and Yunnan provinces, China at 2000-3000m where it is listed as Near Threatened. This species has a disjunct distribution and does not occur in Sikkim or Bhutan but is reported from the western part of Nepal and also Kashmir.  
Refs: 1, 2, 4, 16, 18, 20, 30, 34, 35, 47

***Acer campbellii*** var. ***campbellii***  
Bhutan, China, India, Myanmar, Nepal, Viet Nam  
Occurs over a wide area, often near rivers and streams and up to relatively high altitudes. In north India and Nepal it may be under localised pressure and as a result be locally threatened.  
Refs: 1, 2, 18, 30, 37

***Acer campbellii*** var. ***serratifolium***  
Banerji (1961)  
Bhutan, China, India, Nepal  
As with the other variety of *Acer campbellii*, the conservation status of this variety is Least Concern over its range but may be locally under threat in north India and Nepal.  
Refs: 1, 30

***Acer campestre*** L. (1753)  
Continental Europe, UK, Western Asia and North Africa  
Very commonly growing as a shrub, thriving in thickets, sometimes as a tree in the hills or plains, often as undergrowth in forests. *Acer campestre* is one of the few European species, widespread and indigenous to almost all European countries, except Scandinavia and Finland. It is rare in the southern parts of Spain and Portugal, but occurs in North Africa and western Asia.  
Refs: 2, 3, 18, 30, 34, 42, 43, 44

***Acer capillipes*** Maximowicz (1867)  
Japan  
Red Snakebark Maple is widely valued to horticulture due to the attractive striped bark and autumnal leaf colour.  
Refs: 2, 9, 18, 30, 34

***Acer cappadocicum*** subsp. ***cappadocicum*** Gleditsch (1785)  
Armenia, Azerbaijan, Bhutan, China, Georgia, India, Islamic Republic of Iran, Nepal, Pakistan, Turkey  
Listed as Vulnerable in China but it occurs over a huge range from Turkey to China.  
Refs: 1, 2, 4, 16, 18, 30, 34, 42, 43, 44, 47

***Acer cappadocicum*** subsp. ***sinicum***  
(Rehder) Handel-Mazzetti (1933)  
China  
A common subspecies endemic to China.  
Refs: 1, 16, 18, 30, 34, 47

***Acer carpinifolium*** Siebold & Zuccarini (1875)  
Japan  
Refs: 2, 9, 18, 30, 34, 47

***Acer caudatum*** Wallich (1831)  
Bhutan, China, India, Myanmar, Nepal  
Native to alpine forests over a broad altitudinal range (1700-4000m) across large parts of China, Myanmar and the Himalayas.  
Refs: 1, 2, 4, 15, 16, 18, 30, 34, 35, 47

***Acer circinatum*** Pursh (1814)  
Canada, United States of America  
Refs: 2, 18, 30, 34, 45, 47, 49

***Acer cissifolium*** (Siebold & Zuccarini) Koch (1864)  
Japan  
Refs: 2, 9, 30, 34, 47

***Acer cordatum*** var. ***cordatum*** Pax (1889)  
China  
Refs: 1, 2, 30

***Acer cordatum*** var. ***dimorphifolium***  
(Metcalf) Chen (2008)  
China  
Refs: 1, 30

***Acer coriaceifolium*** Lévillé (1912)

China  
An evergreen tropical acer from China and Taiwan.  
Refs: 1, 2, 16, 30, 34

***Acer crataegifolium*** Siebold & Zuccarini (1845)

Japan  
Common in temperate deciduous forests, usually growing in open places such as along mountain paths, streams and in young secondary forests. It is a snakebark maple but rare in cultivation.  
Refs: 2, 9, 18, 30, 34, 47

***Acer davidii*** Franchet (1885)

China, Myanmar  
A popular species known for its snake-like bark and autumnal leaf colour.  
Refs: 1, 2, 15, 16, 18, 30, 34, 47

***Acer diabolicum*** Blume ex Koch (1864)

Japan  
Assessor: Dr Ikuyo Saeki  
Refs: 2, 9, 58

***Acer distylum*** Siebold & Zuccarini (1845)

Japan  
Refs: 2, 9, 18, 30, 34, 47

***Acer duplicatoserratum*** var. ***chinense*** Chang (1990)

China  
Refs: 1, 2, 30

***Acer elegantulum*** Fang & Chiu (1979)

China  
An Acer from mountainous forests and valleys in southern and eastern China, but debate exists with regards to this species relationship to *Acer pubinerve* from which it is difficult to distinguish (Xu *et al.*, 2008). Listed as Vulnerable in the Chinese Species Red List (2004).  
Refs: 1, 2, 16, 30, 34

***Acer erianthum*** Schwerin (1901)

China  
Refs: 1, 2, 16, 18, 30, 34, 47

***Acer fabri*** Hance (1884)

China, Viet Nam  
Refs: 1, 2, 16, 18, 30, 34, 37, 47

***Acer flabellatum*** Rehder (1905)

China, Myanmar, Viet Nam  
Refs: 1, 16, 18, 30, 34, 36, 37, 47

***Acer forrestii*** Diels (1912)

China, Viet Nam  
A snakebark maple listed as Near Threatened in the Chinese Species Red List (2004).  
Refs: 1, 16, 18, 30, 34, 47

***Acer glabrum*** var. ***diffusum*** (Greene) Smiley (1971)

United States of America  
Refs: 7, 8, 18, 30, 45, 47

***Acer glabrum*** var. ***douglasii*** (Hook.)

Dippel (1892)  
Canada, United States of America  
Refs: 2, 18, 30, 34, 45, 47, 49

***Acer glabrum*** var. ***glabrum***

Canada, United States of America  
Refs: 2, 7, 8, 18, 34, 45, 47

***Acer glabrum*** var. ***neomexicanum***

(Greene) Kearney & Peebles (1939)  
United States of America  
Refs: 7, 8, 30, 34, 45, 47, 49

***Acer glabrum*** var. ***torreyi*** (Greene)

Smiley (1921)  
United States of America  
Refs: 18, 30, 34, 45, 47

***Acer grandidentatum*** Nutt. (1938)

Canada, Mexico, United States of America  
This taxon is considered by some to be a synonym of *Acer saccharum* subsp. *grandidentatum* (Nutt.) Desmarais.  
Refs: 2, 7, 18, 30, 34, 45, 47, 49

***Acer heldreichii*** Orphanides ex Boissier (1856)

Albania, Armenia, Bulgaria, Georgia, Greece, Montenegro, Serbia, Turkey  
Refs: 2, 3, 18, 30, 34, 47

***Acer henryi*** Pax (1889)

China  
Refs: 1, 2, 16, 18, 30, 34, 47

***Acer hyrcanum*** Fisher & Meyer (1837)

Albania, Armenia, Azerbaijan, Bosnia and Herzegovina, Bulgaria, Croatia, Georgia, Greece, Islamic Republic of Iran, Lebanon, Montenegro, Serbia, Syrian Arab Republic, Turkey, Ukraine  
Refs: 2, 3, 18, 30, 34, 43, 44, 47

***Acer japonicum*** Thunberg ex Murray (1784)

Japan  
A common acer in Japan. *Acer japonicum* is found extensively in cultivation with many cultivars known although not nearly as many as *Acer palmatum*. However, the true form of the species is not readily available.  
Refs: 1, 2, 9, 18, 30, 34, 47

***Acer laevigatum*** var. ***laevigatum***

Bhutan, China, India, Myanmar, Nepal, Viet Nam  
Refs: 1, 2, 4, 18, 30, 37

***Acer laevigatum*** var. ***salweenense***

(Smith) Cowan ex Fang (1939)  
China, Myanmar  
Refs: 1, 2, 18, 30, 47

***Acer laurinum*** Hasskarl (1843)

Cambodia, China (Guangxi, Hainan, Xizang, Yunnan), India (Assam), Indonesia, Lao People's Democratic Republic, Malaysia, Myanmar, Nepal, Philippines, Thailand, Viet Nam  
A significant evergreen tropical tree (25-30m tall) occurring over a wide area and the only acer known to naturally occur in the southern hemisphere. However, despite its range and significance it has been subject to relatively little taxonomic research and potentially could be more than one species or subspecies.  
Refs: 1, 2, 16, 18, 30, 34, 36, 37, 38, 48

***Acer laxiflorum*** Pax (1902)

China  
Refs: 1, 16, 18, 30, 34, 47



- Acer longipes*** Franchet ex Rehder (1905)  
China  
Listed as Vulnerable in the Chinese Species Red List (2004).  
Refs: 1, 2, 16, 18, 30, 34, 47
- Acer lucidum*** Metcalf (1932)  
China  
Widely distributed but overall not a common species and listed as Vulnerable in the Chinese Species Red List (2004).  
Refs: 1, 2, 16, 18, 30, 48
- Acer macrophyllum*** Pursh (1814)  
Canada, United States of America  
Refs: 2, 18, 30, 34, 47, 49
- Acer mandshuricum*** Maximowicz (1867)  
China, Democratic People's Republic of Korea, Republic of Korea, Russian Federation  
Refs: 1, 2, 18, 30, 34, 47
- Acer maximowiczianum*** Miquel (1867)  
China, Japan  
Very fragmented distributed in China, but with some good sized populations.  
Refs: 1, 2, 18, 30, 34, 47, 48
- Acer maximowiczii*** Pax (1899)  
China  
Refs: 1, 16, 18, 30, 34, 47
- Acer micranthum*** Siebold & Zuccarini (1845)  
Japan  
Komine Maple (*Acer micranthum*) is a snakebark maple only occasionally grown outside of Japan.  
Refs: 2, 9, 18, 30, 34, 47
- Acer monspessulanum*** L. (1753)  
Albania, Andorra, Bosnia and Herzegovina, Bulgaria, Croatia, France, Germany, Greece, Italy, Lebanon, Portugal, Republic of Macedonia, Montenegro, Romania, Serbia, Slovenia, Spain, Turkey  
Refs: 2, 3, 18, 30, 34, 47
- Acer morifolium*** Koidzumi (1914)  
Japan  
Restricted to Yakushima Island in the Ryukyu chain of islands. Although this snakebark maple is very restricted in distribution (400km<sup>2</sup>), it is locally abundant and not considered to be under threat.  
Assessor: Dr Ikuyo Saeki  
Refs: 2, 9, 30, 34, 47
- Acer negundo* subsp. *californicum*** (Torrey & Gray) Wesmael (1890)  
United States of America  
Refs: 2, 18, 30, 34, 45, 47
- Acer negundo* subsp. *interius*** (Britton) A. & D. Loeve (1954)  
Canada, United States of America  
Refs: 2, 18, 30, 34, 45, 47, 49
- Acer negundo* subsp. *negundo*** L. (1753)  
Canada, Guatemala, Mexico, United States of America  
*Acer negundo* has become naturalised in China and invasive in Australia along watercourses, in wet forests, along roadsides and in disturbed sites with moist soil. In its native range, Manitoba Maple or Box Elder is utilised for both its timber and also as a source of maple syrup.  
Refs: 2, 18, 30, 34, 45, 47, 49
- Acer nigrum*** Michx. f.  
Canada, United States of America  
This maple is considered by some to be a synonym of *Acer saccharum* subsp. *nigrum* (F. Michx.) Desmarais. It is commonly known as Black Maple and is utilised for its timber and also as a source of Maple Syrup.  
Refs: 7, 18, 30, 34, 45, 47, 49
- Acer nipponicum*** Hara (1938)  
Japan  
Refs: 2, 9, 18, 30, 34, 47
- Acer oblongum* var. *oblongum*** Wallich ex D.C. (1824)  
Bhutan, China, India, Lao People's Democratic Republic, Myanmar, Nepal, Thailand, Viet Nam  
Refs: 1, 30
- Acer obtusifolium*** Sibthorp & Smith (1809)  
Cyprus, Israel, Lebanon, Palestinian Territory, Syrian Arab Republic, Turkey  
Refs: 2, 34
- Acer oliverianum*** Pax (1889)  
China, Taiwan, Viet Nam  
Refs: 1, 2, 16, 18, 30, 34, 36, 47
- Acer opalus*** Miller (1766)  
Albania, Algeria, Croatia, France, Germany, Greece, Hungary, Italy, Malta, Montenegro, Morocco, Serbia, Slovenia, Spain, Switzerland  
Refs: 2, 3, 18, 34, 47
- Acer palmatum*** Thunberg ex Murray (1784)  
Japan, Republic of Korea, Taiwan  
Widespread in Japan, Korea, Taiwan and eastern China, but listed as Vulnerable in China. Commonly referred to as Japanese Maple, this acer has been in cultivation for centuries and its numerous cultivars are widely available.  
Refs: 1, 2, 9, 16, 18, 30, 34, 47
- Acer paxii*** Franchet (1886)  
China  
Very common along rivers in montane forests, but listed as Vulnerable in Chinese Species Red List (2004).  
Refs: 1, 2, 16, 18, 30, 34, 47, 48
- Acer pectinatum* subsp. *pectinatum***  
Bhutan, China, India, Myanmar, Nepal  
A snakebark maple from the Himalayas.  
Refs: 1, 2, 18, 30, 34
- Acer pectinatum* subsp. *taronense*** (Handel-Mazzetti) Murray (1977)  
Bhutan, China, India, Myanmar  
A snakebark maple from the Himalayas.  
Refs: 1, 2, 4, 18, 30, 34, 47

***Acer pensylvanicum*** L. (1753)

Canada, United States of America  
Striped Maple (*Acer pensylvanicum*) is the only snakebark maple which is from North America, all other snakebark maples are from Asia.  
Refs: 2, 18, 30, 34, 45, 47, 49

***Acer pictum*** subsp. ***dissectum***

(Wesm.) H. Ohashi (1993)  
Japan  
Assessor: Dr Ikuyo Saeki  
Refs: 9, 30, 59

***Acer pictum*** subsp. ***glaucum*** (Koidz.)

H. Ohashi (1993)  
Japan  
Assessor: Dr Ikuyo Saeki  
Refs: 9, 30, 58, 59

***Acer pictum*** subsp. ***macropterum***

(Fang) Ohashi (1993)  
China  
Limited distribution but quite common and occurs at high elevation.  
Refs: 1, 30, 34, 59

***Acer pictum*** subsp. ***mayrii***

Japan, Russian Federation  
Refs: 9, 18, 30, 58, 59

***Acer pictum*** subsp. ***mono***

(Maximowicz) Ohashi (1993)  
China, Democratic People's Republic of Korea, Japan, Mongolia, Republic of Korea, Russian Federation  
Refs: 1, 9, 18, 30, 34, 47

***Acer pictum*** subsp. ***pictum***

Democratic People's Republic of Korea, Japan, Republic of Korea  
Refs: 1, 9, 18, 30, 34, 59

***Acer pictum*** subsp. ***savatieri*** (Pax) H.

Ohashi (1993)  
Japan  
Assessor: Dr Ikuyo Saeki  
Refs: 9, 30, 58, 59

***Acer pictum*** subsp. ***tricuspis*** (Rehder)

Ohashi (1993)  
China  
Refs: 1, 30, 34, 59

***Acer platanoides*** subsp. ***platanoides***

L. (1753)  
Continental Europe, Scandinavia and Western Asia  
Norway Maple is a common ornamental tree with many cultivars and widely used in urban environments. It has become naturalised in North America where it is considered invasive and a threat to native forests.  
Refs: 2, 18, 30, 34

***Acer pseudoplatanus*** L. (1753)

Continental Europe and The Caucasus  
Sycamore (*Acer pseudoplatanus*) is a popular ornamental tree, widely grown in gardens and urban environments due to its pollution tolerance, and grown commercially for its timber. It has naturalised north of its native range in Europe (e.g. UK and Scandinavia), also in North America, New Zealand and in Australia.  
Refs: 2, 3, 18, 30, 34, 42

***Acer pseudosieboldianum*** (Pax)

Komarov (1904)  
Republic of Korea, Russian Federation  
Refs: 1, 2, 16, 18, 30, 34, 47, 48

***Acer pubinerve*** Rehder (1907)

China  
Debate exists with regards to this species' relationship to *Acer elegantulum* from which it is difficult to distinguish (Xu *et al.*, 2008).  
Refs: 1, 16, 30, 34

***Acer robustum*** Pax (1902)

China  
Recorded as Near Threatened in the Chinese Species Red List (2004).  
Refs: 1, 2, 16, 18, 30, 34, 48

***Acer rubrum*** L. (1753)

Canada, United States of America  
Red Maple (*Acer rubrum*) is widely utilised for its timber.  
Refs: 2, 30, 34, 45, 47, 49

***Acer rufinerve*** Siebold & Zuccarini

(1845)  
Japan  
A Japanese snakebark maple which is commonly grown in gardens with several cultivars available.  
Refs: 1, 2, 9, 18, 30, 34, 47

***Acer saccharinum*** L. (1753)

Canada, United States of America  
Refs: 2, 18, 30, 34, 45, 47, 49

***Acer saccharum*** Marsh. (1785)

Canada, United States of America  
Sugar maple (*Acer saccharum*) is grown for both timber and as a source of maple syrup.  
Refs: 2, 18, 30, 34, 45, 47, 49

***Acer sempervirens*** L. (1753)

Greece, Lebanon, Turkey  
Refs: 2, 3, 18, 30, 34, 47

***Acer serrulatum*** Hayata (1911)

Taiwan  
Very common in forest at low to medium altitude, but listed as Vulnerable in the Chinese Species Red List (2004).  
Refs: 1, 5, 16, 30, 34, 47, 48

***Acer shenkanense*** Fang (1981)

China  
Refs: 1, 30, 34, 48

***Acer shirasawanum*** Koidzumi (1911)

Japan  
Refs: 2, 9, 18, 30, 34, 47

***Acer sieboldianum*** Miquel (1865)

Japan  
Refs: 2, 9, 18, 30, 34, 47

***Acer sinense*** Pax (1889)

China

This taxon is considered by some to be a synonym of *Acer campbellii* subsp. *sinense* (Pax) de Jong.

Refs: 1, 16, 18, 30, 34, 47

***Acer spicatum*** Lam. (1786)

Canada, United States of America

Refs: 2, 18, 30, 34, 45, 47, 49

***Acer stachyophyllum*** Hiern (1875)

Bhutan, China, India, Myanmar, Nepal

Refs: 1, 2, 4, 16, 18, 30, 34, 47

***Acer sterculiaceum*** subsp. ***franchetii***

(Pax) Murray (1969)

China, Viet Nam

Refs: 1, 2, 18, 30, 34, 35, 47

***Acer sterculiaceum*** subsp.***sterculiaceum*** Wallich (1830)

Bhutan, China, India

Refs: 1, 2, 4, 18, 30, 35

***Acer tataricum*** subsp. ***aidzuense***

(Franchet) de Jong (1988)

Japan

Refs: 2, 9, 18, 30, 34

***Acer tataricum*** subsp. ***ginnala***

(Maximowicz) Wesmael (1890)

China, Democratic People's Republic of Korea, Japan, Mongolia, Republic of Korea, Russian Federation

Refs: 1, 2, 18, 30, 34, 42, 47

***Acer tataricum*** subsp. ***semenovii***

(Regel &amp; Herder) Murray (1982)

Afghanistan, China, Russian Federation, Tajikistan, Turkmenistan, Uzbekistan

Refs: 1, 2, 18, 30, 34, 42, 44

***Acer tataricum*** subsp. ***tataricum*** L.

(1753)

Austria, Hungary, Montenegro, Romania, Serbia, Turkey, Ukraine

Refs: 2, 18, 30, 34, 47

***Acer tataricum*** subsp. ***theiferum***

(Fang) Chen &amp; de Jong (2008)

China

Refs: 1, 30

***Acer tegmentosum*** Maximowicz (1857)

China, Democratic People's Republic of Korea, Republic of Korea, Russian Federation

A snakebark maple listed as Vulnerable in the Chinese Species Red List (2004).

Refs: 1, 2, 16, 18, 30, 34, 42, 47, 48

***Acer truncatum*** Bunge (1833)

China, Democratic People's Republic of Korea, Republic of Korea

Recorded as Near Threatened by the Chinese Species Red List (2004), but one of the more common *Acers* in China.

Refs: 1, 2, 16, 18, 30, 34, 47

***Acer tschonoskii*** Maxim. (1886)

Japan

*Acer tschonoskii*, a snakebark maple, is considered by some to include two subspecies, but in this publication *A. tschonoskii* subsp. *koreanum* is considered to be a synonym of *A. komarovii* leaving *A. tschonoskii* Maxim. subsp. *tschonoskii* to be treated as *A. tschonoskii* Maxim.

Refs: 2, 9, 18, 30

***Acer tutcheri*** var. ***tutcheri*** Duthie (1908)

China

Refs: 1, 30

***Acer ukurunduense*** Trautvetter &

Meyer (1856)

China, Democratic People's Republic of Korea, Japan, Republic of Korea, Russian Federation

Listed as Vulnerable in China but occurs more widely. This taxon is considered by some to be a subspecies of *Acer caudatum*, i.e. *Acer caudatum* subsp. *ukurunduense* (Trautvetter & Meyer) Murray.

Refs: 1, 9, 16, 18, 30, 34, 47

***Acer velutinum*** Boissier (1846)

Armenia, Azerbaijan, Georgia, Islamic Republic of Iran, Russian Federation, Turkey

Refs: 2, 18, 30, 34, 43, 44, 47

***Acer wilsonii*** Rehder (1905)

China, Myanmar, Thailand, Viet Nam

Recorded as Vulnerable in China, but found more widely.

Refs: 1, 15, 16, 18, 30, 34, 38, 47

## REFERENCES

1. **Xu, T-z., Chen, Y., du Jong, P.C., Oterdoom, H.J. & Chang, C-S. (2008)** *Flora of China. Volume 11, Oxalidaceae through Aceraceae*. Science Press (China) and Missouri Botanical Garden Press (USA)
2. **van Gelderen D. M., de Jong P. C. & Oterdoom H. J. (1994)** *Maples of the World*. Timber Press Inc., Portland, Oregon, USA
3. **Tutin, T., Heywood, V., Burges, A. & Valentine, D. (1993)** *Flora Europaea: Volume 2: Rosaceae to Umbelliferae*. Cambridge University Press
4. **Press, J.R., Shrestha, K.K. & Sutton, D.A. (2000)** *Annotated Checklist of the Flowering Plants of Nepal*. The Natural History Museum Accessed: 20/03/2008 [www.efloras.org/flora\\_page.aspx?flora\\_id=110](http://www.efloras.org/flora_page.aspx?flora_id=110)
5. **Huang, T-C. (Editor-in-Chief) (1993)** *Flora of Taiwan 3*. Second Edition. National Taiwan University <http://tai2.ntu.edu.tw/fot/>
6. **Research Center For Biodiversity, Academia Sinica (2008)** *Database of Native Plants in Taiwan*. Research Center For Biodiversity, Academia Sinica. Accessed: 19/03/2008 <http://taiwanflora.sinica.edu.tw>
7. **USDA, NRCS (2008)** *The PLANTS Database*. National Plant Data Center, Baton Rouge, LA 70874-4490 USA. Accessed 8 May 2008 <http://plants.usda.gov>
8. **NatureServe (2009)** *NatureServe Explorer: An online encyclopedia of life [web application]*. Version 7.1 NatureServe Accessed: 25 February 2009 <http://www.natureserve.org/explorer>
9. **Iwatsuki, K., Boufford, D. & Ohba, H. (1999)** *Flora of Japan Vol. IIc*. Kodansha, Japan
10. **Davis, P.H. (1967)** *The Flora of Turkey and The East Aegean Islands*. Vol. 2 pp. 509-519. Edinburgh Univ. Press.
11. **Mamikoglu, N.G. (2007)** *Türkiye'nin Ağaç ve Çalları Doğuş Grubu İletişim Yayıncılık ve Tic. A.Ş.*
12. **Güner, A. & Zielinski, J. (1996)** *The conservation status of the Turkish woody flora* Temperate trees under threat. In: Proceedings of an IDS Symposium on the Conservation Status of Temperate Trees. pp 41-52 International Dendrological Society 30 September - 1 October 1994.
13. **Davis, P.H. (1988)** *The Flora of Turkey and The East Aegean Islands*. Vol. 10 pp. 107-108 Edinburgh Univ. Press
14. **Fu, L-K. (1992)** *China Plant Red Data Book - Rare and Endangered Plants: Volume 1*. Science Press, Beijing, China
15. **Kress, W.J. (2003)** *A checklist of the trees, shrubs, herbs, and climbers of Myanmar*. National Museum of Natural History, Washington D.C., USA
16. **Wang, S. & Xie, Y. (2004)** *China Species Red List. Volume 1, Red List*. Higher Education Press
17. **Oldfield, S., Lusty, C. & MacKinven, A. (1998)** *The World List of Threatened Trees*. World Conservation Press
18. **USDA, ARS, National Genetic Resources Program (2009)** *Germplasm Resources Information Network (GRIN) [Online Database]* National Germplasm Resources Laboratory Accessed: 2009 3rd March [www.ars-grin.gov](http://www.ars-grin.gov)
19. **Quarryhill Botanical Garden (2009)** *Field Collection Notes*, Unpublished, Quarryhill Botanical Garden, Glen Allen, USA
20. **Murray, E. (1975)** *Flora of West Pakistan: Aceraceae*. University of Karachi, Pakistan
21. **Cabrera-Rodriguez, L. (1985)** *Flora de Veracruz: Aceraceae*. INECOL, Veraeruz, Mexico
22. **Gelderen, C.J. van & Gelderen, D.M. van (1999)** *Maples for gardens: A color encyclopedia* Timber Press Inc., Portland, Oregon, USA
23. **Guarino, C. & Napolitano, F. (2006)** *Community habitats and biodiversity in the Taburno-Camposauro Regional Park. Woodland, rare species, endangered species and their conservation* Forest@ 3 527-541 online: 2006-12-18 <http://www.sisef.it/forest/@/show.php?id=419>

24. **Gomez-Aparicio, L., Zamora, R. & Gomez J.M. (2005)** *The regeneration status of the endangered Acer opalus subsp. granatense throughout its geographical distribution in the Iberian Peninsula*. Biological Conservation Vol: 121 (2) pp. 195-206
25. **Pignatti, S (1982)** *Flora d'Italia* 2. Edagricole, Bologna, Italy
26. **Bolos i Capdevila, O.de. (1998)** *Atlas corològic de la flora vascular dels països Catalans : volum 8*. Institut d'Estudis Catalans
27. **Carazo-Montijano, M.M. & Fernandez-Lopez C (2006)** *Catálogo de las plantas vasculares de Andalucía y Marruecos*. Herbario Jaen
28. **Universitat de les Illes Balears (2009)** *Herbario Virtual del Mediterráneo Occidental*. Accessed 16/05/2008 [www.herbariivirtual.uib.es](http://www.herbariivirtual.uib.es)
29. **Fennane, M.M., Ibn Tattou, M., Ouyahya, A. & El Oualidi, J. (2007)** *Flore pratique du Maroc: manuel de détermination des plantes vasculaires. Volume 2*. Université Mohammed V. Institut Scientifique
30. **Missouri Botanical Garden (2009)** *Tropicos 2009 17 March Missouri Botanical Garden* [www.tropicos.org](http://www.tropicos.org)
31. **Chen, Y. (2007)** *Two newly recorded species of Acer (Aceraceae) in China*. Acta Phytotaxonomica Sinica Vol. 45 (3) pp. 337-340
32. **Vargas-Rodriguez, Y. (2005)** *Ecology of disjunct cloud forest sugar maple populations (Acer saccharum ssp. skutchii) in North and Central America*. Louisiana State University
33. **Vivero, J.L., Szejner, M., Garden, J. & Magin, G. (2006)** *The Red List of Trees of Guatemala*. FFI, Cambridge
34. **BGCI (2009)** *PlantSearch*. Accessed: 19/03/2009 [www.bgci.org/plant\\_search.php](http://www.bgci.org/plant_search.php)
35. **Murray, E. (1974)** *Himalayan maples*. Kalmia 6
36. **Vietnam Forest Inventory and Planning Institute (1996)** *Vietnam Forest Trees*. Agricultural Publishing House
37. **Pham, H.H. (1992)** *Cayco Vietnam: An illustrated flora of Vietnam II (I)*. Montreal
38. **Santisuk, T. (1998)** *A Systematic Study of the Genus Acer (Aceraceae) in Thailand*. Natural History Bulletin of the Siam Society Vol. 46 (1) pp. 93-104
39. **Parker, T. (2008)** *Trees of Guatemala*. The Tree Press, Austin, USA
40. **SEMARNAT (2002)** *Normas Oficiales Mexicanas, NOM-059-SEMARNAT-2001*.
41. **Consejo Nacional de Áreas Protegidas (2006)** *Lista de especies amenazadas de Guatemala*. Gobierno de Guatemala
42. **Tzvelev, N.N. (2006)** *Flora of Russia : the European part and bordering regions. Vol. 9, Magnoliophyta (Angiospermae) Magnoliopsida (Dicotyledones)*. Taylor & Francis
43. **Sabeti, H. (1976)** *Forests, trees and shrubs of Iran*. Ministry of Agriculture and Natural Resources
44. **Murray, E. & Rechinger, K.H. (1969)** *Flora Iranica – Aceraceae*. Vol 30 (4). Akademische Druck - u. Verlagsanstalt
45. **Kartesz, J.T. & Kartesz, R. (1980)** *A synonymized checklist of the vascular flora of the United States, Canada, and Greenland*. University of North Carolina Press
46. **Environment Agency (2000)** *The Threatened Wildlife of Japan, Red Data Book, 2nd ed. Vol. 8, Vascular Plants*. Japan Wildlife Research Center, Tokyo (In Japanese)
47. **GBIF (2008)** *Biodiversity occurrence data accessed through GBIF Data Portal 2008* Accessed 16/05/2008 [www.gbif.net](http://www.gbif.net) (\*for full details, see below)
48. **Chen, Y. (Unpublished)** *Chinese Herbarium Data*. Chinese Academy of Sciences, Beijing
49. **CONABIO (2008)** *The World Biodiversity Information Network (REMIB) Accessed: 16/05/2008* [http://www.conabio.gob.mx/remib\\_ingles/doctos/remib\\_ing.html](http://www.conabio.gob.mx/remib_ingles/doctos/remib_ing.html)

50. **Anthos (2008)** *Sistema de información de las plantas de España*. Real Jardín Botánico, CSIC – Fundación Biodiversidad Accessed: 25/06/08 [www.anthos.es](http://www.anthos.es)
51. **Barnes B.V., Saeki I. & Kitazawa A. (2004)** *Occurrence and landscape ecology of a rare disjunct maple species, Acer pycnanthum, and comparison with Acer rubrum*. Environmental Review Vol:12 pp. 163-196
52. **Japanese Red Maple Conservation Group (2003)** *Report of the Japanese red maple conservation group activities in Nagano prefecture, 1991–2003. (In Japanese)*
53. **Saeki I. (2005a)** *Application of aerial survey for detecting a rare maple species and endangered wetland ecosystems*. Forest Ecology & Management Vol: 216 pp. 283-294
54. **Saeki, I. (2005b)** *Ecological occurrence of the endangered Japanese red maple, Acer pycnanthum: base line for ecosystem conservation*. Landscape and Ecological Engineering Vol. 1 pp. 135-147
55. **Saeki, I. (2008)** *Sexual reproductive biology of the endangered Japanese red maple (Acer pycnanthum)*. Ecol. Res. Vol: 23 pp. 719-727
56. **Ministry of the Environment (2007)** *Red list of plants and Red Data Book*. [http://www.biodic.go.jp/rdb/rdb\\_f.html](http://www.biodic.go.jp/rdb/rdb_f.html) (In Japanese)
57. **Shimabuku, K. (1997)** *Check List Vascular Flora of the Ryukyu Islands. (In Japanese)* Kyushu University
58. **Ogata, K. (1965)** *A dendrological study on the Japanese Aceraceae, with special reference to the geographical distribution*. Bull Tokyo Univ Forests 60 pp. 1-99
59. **Ohashi, H. (1993)** *Nomenclature of Acer pictum Thunberg ex Murray and its Infraspecific Taxa (Aceraceae)*. Journal of Japanese Botany Vol: 68 pp. 315-325
60. **Charco García, J. (2008)** *Guía de los árboles y arbustos autóctonos de Castilla-La Mancha*.
61. **Chen, Y. & Yang, Q. (2003)** *Acer yangbiense (Aceraceae), a New Species from Yunnan, China*. Novon 13 pp. 296-299
62. **Sun, W. & Yin, Q. (in press)** *Ex-Situ Conserving the Yangbi maple Acer yangbiense, Only 4 Individuals Restricted to Yunnan Province, Southwest, China*. Oryx
63. **Güner, A. (2008)** *Red List Assessment Datasheet for Acer cappadocicum ssp. divergens*. Submitted to BGCI
64. **Stritch, L. (2008)** *Red List Assessment Datasheet for Acer glabrum var. greenei*. Submitted to BGCI
65. **Güner, A. (2008)** *Red List Assessment Datasheet for Acer undulatum*. Submitted to BGCI
66. **Saeki, I. (2009)** *Red List Assessment Datasheet for Acer miyabei var. miyabei*. Submitted to BGCI
67. **Saeki, I. (2009)** *Red List Assessment Datasheet for Acer miyabei var. shibatai*. Submitted to BGCI
68. **Saeki, I. (2009)** *Red List Assessment Datasheet for Acer pycnanthum*. Submitted to BGCI
69. **Saeki, I. (2009)** *Red List Assessment Datasheet for Acer oblongum var. itoanum*. Submitted to BGCI
70. **Saeki, I. (2009)** *Red List Assessment Datasheet for Acer pictum ssp taishakuense*. Submitted to BGCI
71. **McNamara, W. (2001)** *Acer pentaphyllum*. Quarryhill Botanical Garden. Accessed 20/02/2008 <http://www.quarryhillbg.org/acerpentaphyllum.html>



*Acer pentaphyllum* in Kangding County, Sichuan (Yousheng Chen)

\* Biodiversity occurrence data was accessed through GBIF Data Portal ([http://data.gbif.org/datasets/resource/dataset\\_number](http://data.gbif.org/datasets/resource/dataset_number)) on 16/05/2008 in support of the conservation assessments [dataset number is given in brackets]:

ACEDO C. et LLAMAS F. (2006 onwards) LEB Vascular Plants Collections Online Databases. (8003); Anerkennung der Leistungen der ehrenamtlichen Kartierer der Flora Deutschlands (1098); Arizona State University, International Institute for Species Exploration, Arizona State University Vascular Plant Herbarium (676) & The Deaver Herbarium, Northern Arizona University (678); BDBC BioBlitz in Penyalgosa (Castellón, Spain) (1761); Biologiezentrum Linz Oberoesterreich, Biologiezentrum Linz (1104); Canadian Museum of Nature Herbarium (The National Herbarium of Canada) (123); Conservatoire botanique national du Bassin parisien, Observations du Conservatoire botanique national du Bassin parisien. (1103); Dpto de Botánica, Ecología y Fisiología Vegetal (herbario\_cofc).Facultad de Ciencias.Universidad de Córdoba (292); EUNIS, Muséum National d'Histoire Naturelle, Paris; Harvard University Herbaria (1827); Herbario de la Universidad de Arizona, EUA (2479); Herbario de la Universidad de Salamanca (SALA) (239); Herbario del Instituto de Ecología, A.C., México (IE-BAJIO) (1595); Herbario del Instituto de Ecología, A.C., México (IE-XAL) (1597); Herbario Universidad de Málaga (MGC). Herbarium collections online databases. (8105); Herbarium (ALA), University of Alaska Museum of the North, Fairbanks, AK. (975); Herbarium HSS. Centro de Investigación La Orden-Valdesequera. (291); Hortus Botanicus Sollerensis Herbarium (FBonafè) (300); Institut Botanic de Barcelona, BC (299); Karl Franzens University of Graz, Institute for Botany - Herbarium GZU, Herbarium GZU (1491); Lund Botanical Museum (LD) (1028); Martín-Consuegra, E. *et al.* (2005). COA collections online databases. (247); Missouri Botanical Garden (621); National Institute of Genetics, ROIS, Herbarium Specimens of Museum of Nature and Human Activities, Hyogo Pref., Japan (589); National Institute of Genetics, ROIS, Plant Observation Records of Japan (2547); National Science Museum of Korea, National Science Museum of Korea Plant (908); Natural History Museum, Vienna - Herbarium W, Herbarium W (1479); Oregon State University Herbarium (OSC) (622); Real Jardín Botánico (Madrid), Vascular Plant Herbarium (MA) (240); Ree, R. H., Boufford, D. E. B, and Kelley, S. L. 2007. Biodiversity of the Hengduan Mountains (<http://hengduan.huh.harvard.edu/fieldnotes>) (1828); Ruiz, T. (2005) Vascular collection herbarium online database in Extremadura (255); Schulman, L. 2008. Collection database of the Botanic Garden. Finnish Museum of Natural History, Helsinki.



Leaves and flower of *Acer miyabei* var. *shibatai* in Nagano prefecture, central Honshu, Japan (Ikuyo Saeki)

(2406); Scientific Research Centre of the Slovenian Academy of Sciences and Arts, Institute of Biology, FloVegSI - Floristical and fitocenological database of ZRC SAZU (2585); SysTax, (1875); Tiroler Landesmuseum Ferdinandeum (1509); United States National Plant Germplasm System Collection (1429); Universidad de Almería, HUAL (244); Universidad de Oviedo. Departamento de Biología de Organismos y Sistemas: FCO (245); University and Jepson Herbaria DiGIR Provider (1413); University of Alabama Herbarium (UNA) (775); University of Colorado Museum (758); University of Washington Burke Museum. WTU Herbarium Vascular Plant Collection. Seattle, Washington. (126); USDA NRCS. 2007. The PLANTS Database (<http://plants.usda.gov>). National Plant Data Center, Baton Rouge, LA 70874-4490 USA. (1066); Utah State University, USU-UTC Specimen Database (1508); Willing, E. (Ed.) 1978 - (continuously updated): Herbarium collection of Eckhard Willing at the Herbarium Berolinense (B). (1096).

## ANNEX 1

### IUCN RED LIST CATEGORIES AND CRITERIA

#### **EXTINCT (EX)**

A taxon is Extinct when there is no reasonable doubt that the last individual has died. A taxon is presumed Extinct when exhaustive surveys in known and/or expected habitat, at appropriate times (diurnal, seasonal, annual), throughout its historic range have failed to record an individual. Surveys should be over a time-frame appropriate to the taxon's life cycle and life form.

#### **EXTINCT IN THE WILD (EW)**

A taxon is Extinct in the Wild when it is known only to survive in cultivation, in captivity or as a naturalized population (or populations) well outside the past range. A taxon is presumed Extinct in the Wild when exhaustive surveys in known and/or expected habitat, at appropriate times (diurnal, seasonal, annual), throughout its historic range have failed to record an individual. Surveys should be over a time-frame appropriate to the taxon's life cycle and life form.

#### **CRITICALLY ENDANGERED (CR)**

A taxon is Critically Endangered when the best available evidence indicates that it meets any of the criteria A to E for Critically Endangered (see Section V), and it is therefore considered to be facing an extremely high risk of extinction in the wild.

#### **ENDANGERED (EN)**

A taxon is Endangered when the best available evidence indicates that it meets any of the criteria A to E for Endangered (see Section V), and it is therefore considered to be facing a very high risk of extinction in the wild.

#### **VULNERABLE (VU)**

A taxon is Vulnerable when the best available evidence indicates that it meets any of the criteria A to E for Vulnerable (see Section V), and it is therefore considered to be facing a high risk of extinction in the wild.

#### **NEAR THREATENED (NT)**

A taxon is Near Threatened when it has been evaluated against the criteria but does not qualify for Critically Endangered, Endangered or Vulnerable now, but is close to qualifying for or is likely to qualify for a threatened category in the near future.

#### **LEAST CONCERN (LC)**

A taxon is Least Concern when it has been evaluated against the criteria and does not qualify for Critically Endangered, Endangered, Vulnerable or Near Threatened. Widespread and abundant taxa are included in this category.

#### **DATA DEFICIENT (DD)**

A taxon is Data Deficient when there is inadequate information to make a direct, or indirect, assessment of its risk of extinction based on its distribution and/or population status. A taxon in this category may be well studied, and its biology well known, but appropriate data on abundance and/or distribution are lacking. Data Deficient is therefore not a category of threat. Listing of taxa in this category indicates that more information is required and acknowledges the possibility that future research will show that threatened classification is appropriate. It is important to make positive use of whatever data are available. In many cases great care should be exercised in choosing between DD and a threatened status. If the range of a taxon is suspected to be relatively circumscribed, and a considerable period of time has elapsed since the last record of the taxon, threatened status may well be justified.

#### **NOT EVALUATED (NE)**

A taxon is Not Evaluated when it has not yet been evaluated against the criteria.

### **THE CRITERIA FOR CRITICALLY ENDANGERED, ENDANGERED AND VULNERABLE**

#### **CRITICALLY ENDANGERED (CR)**

A taxon is Critically Endangered when the best available evidence indicates that it meets any of the following criteria (A to E), and it is therefore considered to be facing an extremely high risk of extinction in the wild:

- A. Reduction in population size based on any of the following:
  1. An observed, estimated, inferred or suspected population size reduction of  $\geq 90\%$  over the last 10 years or three generations, whichever is the longer, where the causes of the reduction are clearly reversible AND understood AND ceased, based on (and specifying) any of the following:
    - (a) direct observation
    - (b) an index of abundance appropriate to the taxon
    - (c) a decline in area of occupancy, extent of occurrence and/or quality of habitat
    - (d) actual or potential levels of exploitation
    - (e) the effects of introduced taxa, hybridization, pathogens, pollutants, competitors or parasites.
  2. An observed, estimated, inferred or suspected population size reduction of  $\geq 80\%$  over the last 10 years or three generations, whichever is the longer, where the reduction or its causes may



not have ceased OR may not be understood OR may not be reversible, based on (and specifying) any of (a) to (e) under A1.

3. A population size reduction of  $\geq 80\%$ , projected or suspected to be met within the next 10 years or three generations, whichever is the longer (up to a maximum of 100 years), based on (and specifying) any of (b) to (e) under A1.
  4. An observed, estimated, inferred, projected or suspected population size reduction of  $\geq 80\%$  over any 10 year or three generation period, whichever is longer (up to a maximum of 100 years in the future), where the time period must include both the past and the future, and where the reduction or its causes may not have ceased OR may not be understood OR may not be reversible, based on (and specifying) any of (a) to (e) under A1.
- B. Geographic range in the form of either B1 (extent of occurrence) OR B2 (area of occupancy) OR both:
1. Extent of occurrence estimated to be less than 100 km<sup>2</sup>, and estimates indicating at least two of a-c:
    - a. Severely fragmented or known to exist at only a single location.
    - b. Continuing decline, observed, inferred or projected, in any of the following:
      - (i) extent of occurrence
      - (ii) area of occupancy
      - (iii) area, extent and/or quality of habitat
      - (iv) number of locations or subpopulations
      - (v) number of mature individuals.
    - c. Extreme fluctuations in any of the following:
      - (i) extent of occurrence
      - (ii) area of occupancy
      - (iii) number of locations or subpopulations
      - (iv) number of mature individuals.
  2. Area of occupancy estimated to be less than 10 km<sup>2</sup>, and estimates indicating at least two of a-c:
    - a. Severely fragmented or known to exist at only a single location.
    - b. Continuing decline, observed, inferred or projected, in any of the following:
      - (i) extent of occurrence
      - (ii) area of occupancy
      - (iii) area, extent and/or quality of habitat
      - (iv) number of locations or subpopulations
      - (v) number of mature individuals.

- c. Extreme fluctuations in any of the following:
  - (i) extent of occurrence
  - (ii) area of occupancy
  - (iii) number of locations or subpopulations
  - (iv) number of mature individuals.

C. Population size estimated to number fewer than 250 mature individuals and either:

1. An estimated continuing decline of at least 25% within three years or one generation, whichever is longer, (up to a maximum of 100 years in the future) OR
2. A continuing decline, observed, projected, or inferred, in numbers of mature individuals AND at least one of the following (a-b):
  - (a) Population structure in the form of one of the following:
    - (i) no subpopulation estimated to contain more than 50 mature individuals, OR
    - (ii) at least 90% of mature individuals in one subpopulation.
  - (b) Extreme fluctuations in number of mature individuals.

D. Population size estimated to number fewer than 50 mature individuals.

E. Quantitative analysis showing the probability of extinction in the wild is at least 50% within 10 years or three generations, whichever is the longer (up to a maximum of 100 years).

### ENDANGERED (EN)

A taxon is Endangered when the best available evidence indicates that it meets any of the following criteria (A to E), and it is therefore considered to be facing a very high risk of extinction in the wild:

- A. Reduction in population size based on any of the following:
1. An observed, estimated, inferred or suspected population size reduction of  $\geq 70\%$  over the last 10 years or three generations, whichever is the longer, where the causes of the reduction are clearly reversible AND understood AND ceased, based on (and specifying) any of the following:
    - (a) direct observation
    - (b) an index of abundance appropriate to the taxon
    - (c) a decline in area of occupancy, extent of occurrence and/or quality of habitat
    - (d) actual or potential levels of exploitation
    - (e) the effects of introduced taxa, hybridization, pathogens, pollutants, competitors or parasites.

2. An observed, estimated, inferred or suspected population size reduction of  $\geq 50\%$  over the last 10 years or three generations, whichever is the longer, where the reduction or its causes may not have ceased OR may not be understood OR may not be reversible, based on (and specifying) any of (a) to (e) under A1.
    - (ii) area of occupancy
    - (iii) area, extent and/or quality of habitat
    - (iv) number of locations or subpopulations
    - (v) number of mature individuals.
  3. A population size reduction of  $\geq 50\%$ , projected or suspected to be met within the next 10 years or three generations, whichever is the longer (up to a maximum of 100 years), based on (and specifying) any of (b) to (e) under A1.
    - (i) extent of occurrence
    - (ii) area of occupancy
    - (iii) number of locations or subpopulations
    - (iv) number of mature individuals.
  4. An observed, estimated, inferred, projected or suspected population size reduction of  $\geq 50\%$  over any 10 year or three generation period, whichever is longer (up to a maximum of 100 years in the future), where the time period must include both the past and the future, AND where the reduction or its causes may not have ceased OR may not be understood OR may not be reversible, based on (and specifying) any of (a) to (e) under A1.
- B. Geographic range in the form of either B1 (extent of occurrence) OR B2 (area of occupancy) OR both:
1. Extent of occurrence estimated to be less than 5000 km<sup>2</sup>, and estimates indicating at least two of a-c:
    - a. Severely fragmented or known to exist at no more than five locations.
    - b. Continuing decline, observed, inferred or projected, in any of the following:
      - (i) extent of occurrence
      - (ii) area of occupancy
      - (iii) area, extent and/or quality of habitat
      - (iv) number of locations or subpopulations
      - (v) number of mature individuals.
    - c. Extreme fluctuations in any of the following:
      - (i) extent of occurrence
      - (ii) area of occupancy
      - (iii) number of locations or subpopulations
      - (iv) number of mature individuals.
  2. Area of occupancy estimated to be less than 500 km<sup>2</sup>, and estimates indicating at least two of a-c:
    - a. Severely fragmented or known to exist at no more than five locations.
    - b. Continuing decline, observed, inferred or projected, in any of the following:
      - (i) extent of occurrence
- C. Population size estimated to number fewer than 2500 mature individuals and either:
1. An estimated continuing decline of at least 20% within five years or two generations, whichever is longer, (up to a maximum of 100 years in the future) OR
  2. A continuing decline, observed, projected, or inferred, in numbers of mature individuals AND at least one of the following (a-b):
    - (a) Population structure in the form of one of the following:
      - (i) no subpopulation estimated to contain more than 250 mature individuals, OR
      - (ii) at least 95% of mature individuals in one subpopulation.
    - (b) Extreme fluctuations in number of mature individuals.
- D. Population size estimated to number fewer than 250 mature individuals.
- E. Quantitative analysis showing the probability of extinction in the wild is at least 20% within 20 years or five generations, whichever is the longer (up to a maximum of 100 years).
- VULNERABLE (VU)**
- A taxon is Vulnerable when the best available evidence indicates that it meets any of the following criteria (A to E), and it is therefore considered to be facing a high risk of extinction in the wild:
- A. Reduction in population size based on any of the following:
1. An observed, estimated, inferred or suspected population size reduction of  $\geq 50\%$  over the last 10 years or three generations, whichever is the longer, where the causes of the reduction are: clearly reversible AND understood AND ceased, based on (and specifying) any of the following:
    - (a) direct observation
    - (b) an index of abundance appropriate to the taxon
    - (c) a decline in area of occupancy, extent of occurrence and/or quality of habitat

- (d) actual or potential levels of exploitation
  - (e) the effects of introduced taxa, hybridization, pathogens, pollutants, competitors or parasites.
2. An observed, estimated, inferred or suspected population size reduction of  $\geq 30\%$  over the last 10 years or three generations, whichever is the longer, where the reduction or its causes may not have ceased OR may not be understood OR may not be reversible, based on (and specifying) any of (a) to (e) under A1.
  3. A population size reduction of  $\geq 30\%$ , projected or suspected to be met within the next 10 years or three generations, whichever is the longer (up to a maximum of 100 years), based on (and specifying) any of (b) to (e) under A1.
  4. An observed, estimated, inferred, projected or suspected population size reduction of  $\geq 30\%$  over any 10 year or three generation period, whichever is longer (up to a maximum of 100 years in the future), where the time period must include both the past and the future, AND where the reduction or its causes may not have ceased OR may not be understood OR may not be reversible, based on (and specifying) any of (a) to (e) under A1.
- B. Geographic range in the form of either B1 (extent of occurrence) OR B2 (area of occupancy) OR both:
1. Extent of occurrence estimated to be less than 20,000 km<sup>2</sup>, and estimates indicating at least two of a-c:
    - a. Severely fragmented or known to exist at no more than 10 locations.
    - b. Continuing decline, observed, inferred or projected, in any of the following:
      - (i) extent of occurrence
      - (ii) area of occupancy
      - (iii) area, extent and/or quality of habitat
      - (iv) number of locations or subpopulations
      - (v) number of mature individuals.
    - c. Extreme fluctuations in any of the following:
      - (i) extent of occurrence
      - (ii) area of occupancy
      - (iii) number of locations or subpopulations
      - (iv) number of mature individuals.
  2. Area of occupancy estimated to be less than 2000 km<sup>2</sup>, and estimates indicating at least two of a-c:
    - a. Severely fragmented or known to exist at no more than 10 locations.
- b. Continuing decline, observed, inferred or projected, in any of the following:
    - (i) extent of occurrence
    - (ii) area of occupancy
    - (iii) area, extent and/or quality of habitat
    - (iv) number of locations or subpopulations
    - (v) number of mature individuals.
  - c. Extreme fluctuations in any of the following:
    - (i) extent of occurrence
    - (ii) area of occupancy
    - (iii) number of locations or subpopulations
    - (iv) number of mature individuals.
- C. Population size estimated to number fewer than 10,000 mature individuals and either:
1. An estimated continuing decline of at least 10% within 10 years or three generations, whichever is longer, (up to a maximum of 100 years in the future) OR
  2. A continuing decline, observed, projected, or inferred, in numbers of mature individuals AND at least one of the following (a-b):
    - (a) Population structure in the form of one of the following:
      - (i) no subpopulation estimated to contain more than 1000 mature individuals, OR
      - (ii) all mature individuals are in one subpopulation.
    - (b) Extreme fluctuations in number of mature individuals.
- D. Population very small or restricted in the form of either of the following:
1. Population size estimated to number fewer than 1000 mature individuals.
  2. Population with a very restricted area of occupancy (typically less than 20 km<sup>2</sup>) or number of locations (typically five or fewer) such that it is prone to the effects of human activities or stochastic events within a very short time period in an uncertain future, and is thus capable of becoming Critically Endangered or even Extinct in a very short time period.
- E. Quantitative analysis showing the probability of extinction in the wild is at least 10% within 100 years.



# The Red List of Maples

For further information please contact:

**BGCI**

Descanso House  
199 Kew Road, Richmond  
Surrey, TW9 3BW  
United Kingdom  
Tel: +44 (0)20 8332 5953  
Fax: +44 (0)20 8332 5956  
E-mail: [info@bgci.org](mailto:info@bgci.org)  
Web: [www.bgci.org](http://www.bgci.org)

**Fauna & Flora International**

4th Floor, Jupiter House,  
Station Road, Cambridge,  
CB1 2JD United Kingdom  
Tel: + 44 (0) 1223 571000  
Fax: + 44 (0) 1223 461481  
E-mail: [info@fauna-flora.org](mailto:info@fauna-flora.org)  
Web: [www.fauna-flora.org](http://www.fauna-flora.org)  
[www.globaltrees.org](http://www.globaltrees.org)

£10.00