

# Slide Projection and Accessories

# reflecta®



Product  
Overview



To me, slides are the best means to visualize a feeling - unsurpassed in expressing colours, shapes, light, and moods in a differentiated manner.

*Hans Thurner  
Multimediale  
Performances\**



## Slide projection – no longer up-to-date?

Especially nowadays, when everybody is talking about megapixels and gigabytes, it seems to be an anachronism when committing oneself to slides and the related technology. With the entire euphoria for digital photos, however, the advantages of slides are often forgotten. Compared to an average digital photo, slides contain a hundred times more information which is the reason why the quality of the image projected from a slide is still unrivalled:

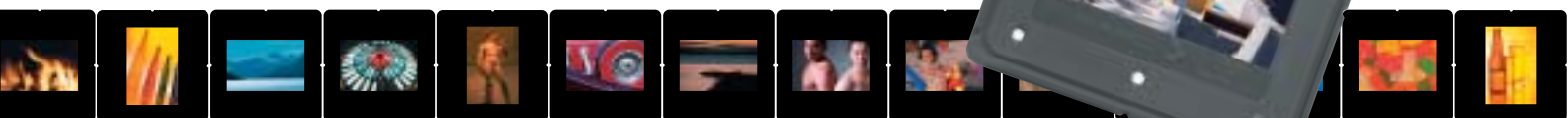
Completely without pixels, flicker-free, and unbeatable both in contrasting and colour rendering.

Besides, the problem of archiving digital photos has not yet been solved. Digital and computer technology are subject to a fast change. Therefore, you cannot take it for granted, for example, that you will be able to read CDs or

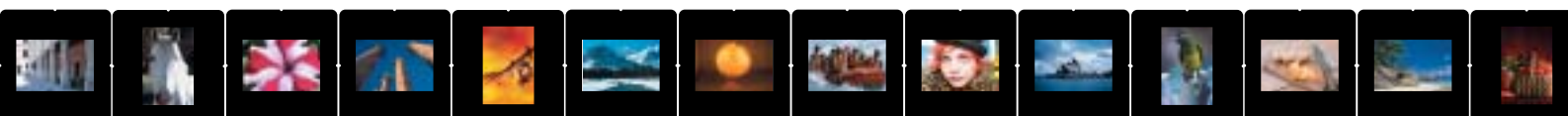
DVDs which are written today in 10 or 20 years with the devices of the time. But carefully manufactured and stored silver gelatin prints will last for several centuries. For digital photos, there is still no solution for a durable and colourfast archiving.

After all, slides can be digitised for effects, electronic mailing and storing by scanning. The reversed way from a digital photo to an analogue slide is also possible, but involves considerable costs, and the result strongly depends on the resolution used when taking the picture.

Contents	Page
2000 series .....	4
AFM 2000 .....	6
2500 series .....	8
Slide scanner .....	10
Projection lenses .....	12
Slide magazines and mounts .....	14/15
Slide mounters .....	15
Accessories (lamps, bags, etc.) .....	16
Slide viewers .....	17
Large light panels .....	18
Small light panels .....	19
Folding monitor .....	19
Projection tables .....	20
Production .....	22



	2000 AF	2000 AF-IR	2500 AF	2500 AF-IR	AFM 2000
<b>Magazines</b>					
PAXIMAT flat magazines (36/50 slides)	-	-	•	•	-
PAXIMAT rotary magazines (100 slides)	-	-	•	•	-
AXIMAT Multimag compact magazines (50 slides)	-	-	•	•	-
Universal magazines	•	•	•	•	•
CS magazines	•	•	•	•	•
LKM magazines	•	•	•	•	•
<b>Slide</b>					
Format up to 24 mm x 36 mm in 5 cm x 5 cm mount	•	•	•	•	•
<b>Changing slides</b>					
Manually via slide changing arm	•	•	•	•	•
Automatically via cable remote control	•	-	•	-	•
Automatically via infrared remote control	-	•	-	•	-
<b>Focusing</b>					
Manually for basic focus (via focusing wheel)	•	•	•	•	•
Manually via remote control (override function)	-	-	-	-	-
Automatically via autofocus	• (IR)	• (IR)	• (IR)	• (IR)	• (IR)
Autofocus can be deactivated	-	-	-	-	-
<b>Remote control</b>					
Cable remote control (can be integrated)	•	-	•	-	•
Infrared remote control (can be integrated)	-	-	-	•	-
Remote control (illuminated/can be illuminated)	-	-	-	-	-
<b>Features</b>					
Microprocessor control	-	-	-	-	-
Halogen lamp 24 V / 150 W	•	•	-	-	•
Halogen lamp 24 V / 250 W	-	-	•	•	-
Continuously adjustable brightness control with memo light	-	-	-	-	-
Timer (integrated)	-	-	-	-	-
Dissolve function (without cable) via remote control (with second projector)	-	-	-	-	-
Timed fading in/out	-	-	-	-	-
Automatic brightness reduction during slide change	-	-	-	-	-
Illuminated LCD display on projector (2 brightness levels)	-	-	-	-	-
Slide lift for single slide projection	•	•	•	•	•
Anti-jam system	•	•	•	•	•
Ball-bearing precision lens guidance	•	•	•	•	•
Turbo cooling fan and thermal safety switch	•	•	•	•	•
Height adjustment via turning foot	•	•	-	-	-
Lamp adjustment, height adjustment via turning feet	-/-	-/-	•/•	•/•	-/•
Power cord compartment, carrying handle	-/-	-/-	•/•	•/•	•/•
Slide light panel with sliding cover (with lighting point)	-	-	•	•	-
Dissolve control via PC	-	-	-	-	-
Dissolve control via control unit (DUO series)	-	-	-	-	-
14 pin AV socket (for timer/transmitter/tape recorder)	-	-	-	-	-
8 pin AV socket (for serial RS232 interface)	-	-	-	-	-
"Made in Germany"	•	•	•	•	•
2 year warranty	•	•	•	•	•
Weight (kg)	3,6	3,6	5,6	5,7	4,4
Dimensions (cm)					
Length	24,5	24,5	30,4	30,4	35
Width	24,5	24,5	29,1	29,1	26
Height	12,3	12,3	13,6	13,6	13
Item no. (with reflecta Agomar 1:2.8/85 mm MC)	16115	16120	16703	16802	16601



## reflecta 2000-AF

**Short description:**

Automatic slide projector of the compact class for three magazine systems. A well-priced product for outstanding projections.

**Technical data and features:**

- For three magazine systems  
Universal, CS, or LKM magazines can be used. The projector is adjusted to the magazine type by setting the lever on the slide changing arm to the appropriate position.
- Slide lift  
The slide lift makes the projector particularly suited for projecting individual slides. Gently press the slide lift down to open it to the top. Now, you can insert a slide from the side. This may also be helpful during a show.

- Halogen lamp 24 V / 150 Watt  
The lucent bright light of the halogen lamp illuminates your slides perfectly and projects the photo in brilliant colours.
- Anti-jam system  
The anti-jam system prevents slides from being jammed in the slide changing arm or being damaged. When the slide changing mechanism faces a defined resistance, the arm is disengaged to avoid damage.
- Thermal safety switch  
A powerful cooling fan ensures a projection which is gentle on your precious slides. A thermal safety switch switches the projector off when a critical temperature is reached.

- Lens  
reflecta Agomar 2.8 / 85 mm
- Cable remote control
- Focusing wheel
- Ball-bearing precision lens guidance
- IR-Autofocussystem
- Weight 3.8 kg
- Dimensions 245 mm x 244 mm x 119 mm
- Made in Germany

**Item no.:**

reflecta 2000-AF .....Item no. 16115





## reflecta 2000 AF-IR

### Accessories

- Projector bag
- Interchangeable lenses (zoom, wide angle or high aperture lenses)
- Slide mounts (with/without glass) and magazines (universal or original CS magazines, rotary tray) according to DIN standard
- Projection screens
- Lamps
- Projection tables

### Short description:

Like reflecta 2000 AF, except

- Automatic slide projector  
With infrared remote control

### Item no.:

reflecta 2000 AF-IR.....Item no. 16120



## reflecta AFM 2000

**Short description:**

The new reflecta AFM 2000 is almost ideal for monitor and screen projections. Simply remove the monitor to view your slides at an impressive size on a projection screen.

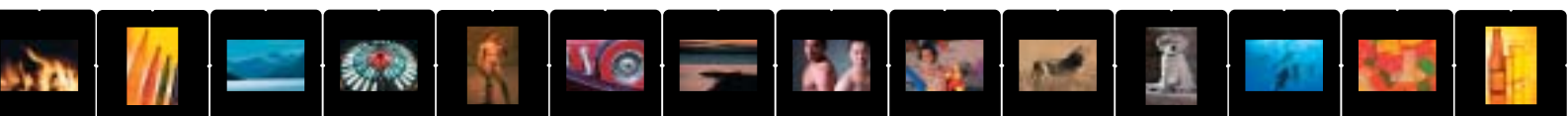
The slide projector is suited for three magazine systems: universal magazines, CS magazines and LKM magazines.

**Technical data and features:**

- Cable remote control  
Press the green button to control the forward and backward slide transport
- IR autofocus system  
For automatic focusing
- Large focusing wheel  
For a precise focusing of the first slide
- Halogen lamp 24 V / 150 W  
A light intense halogen lamp ensures a brilliant colour rendering
- Ball-bearing precision lens guidance  
The ball-bearing lens guidance allows for a particularly soft and precise automatic focusing
- Slide lift for single slide projection  
Ideal for previewing the slides
- Anti-jam system
- Case projector with integrated carrying handle
- Turbo cooling fan with thermal safety switch
- Two height-adjustable feet
- Automatic unfolding monitor with specially ground glass screen 21.5 cm x 21.5 cm
- Folding mirror for screen projection
- For 24 mm x 36 mm slides in 5 cm x 5 cm mounts
- Weight: 4.4 kg
- Dimensions (LxWxH): 35 cm x 26 cm x 13 cm
- Lens: reflecta Agomar MC 1:2,8 / 85 mm

**Item no.:**

reflecta AFM 2000.....Item no. 16601







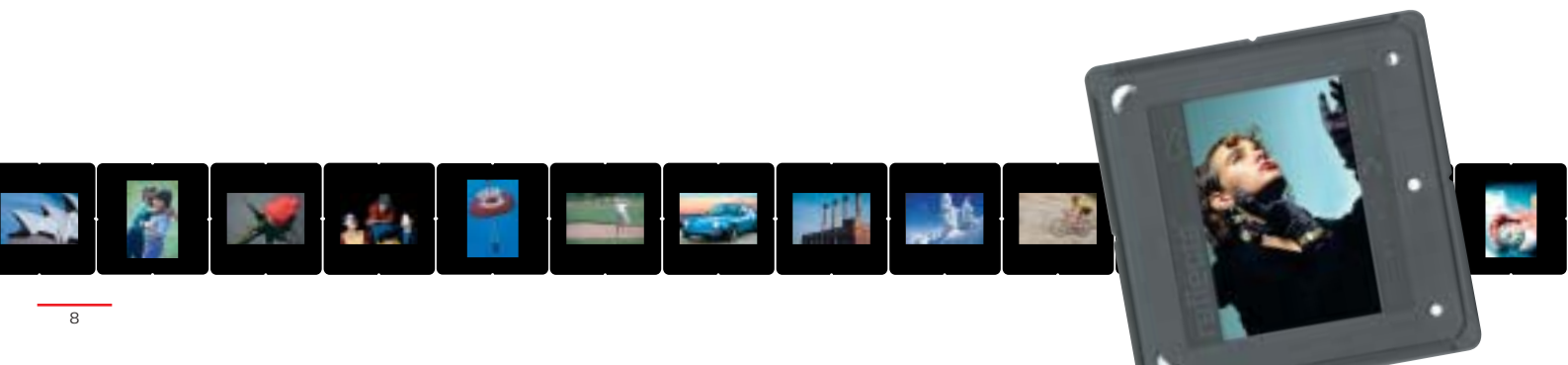
## reflecta 2500 AF

**Short description:**

The reflecta 2500 AF is an autofocus slide projector representing the model to enter the 250 Watt projector category. Equipped for six magazine systems with automatic magazine adjustment, automatic focusing and a 250 Watt halogen lamp, the reflecta 2500 AF offers great convenience.

**Technical data and features:**

- Cable remote control  
With a button for forward and backward slide transport
  - IR autofocus system  
For automatic focusing
  - Large focusing wheel  
For a precise focusing of the first slide
  - Halogen lamp 24 V / 250 W  
A light intense halogen lamp ensures a brilliant colour rendering
  - Ball-bearing precision lens guidance  
For an extremely soft and quick focusing, especially when using a heavy zoom lens or a lens with a long focal length
  - Slide soft lift  
For single slide projection
  - Slide light panel
  - Anti-jam system
  - Extendable carrying handle
  - Power switch and power cord compartment
  - Lens: 2.8 / 85 mm MC
  - Dimensions: 304 mm x 291 mm x 136 mm
  - Weight: 5.6 kg
- Item no.:**  
reflecta 2500 AF .....Item no. 16703





## reflecta 2500 AF-IR

### Short description:

Like reflecta 2500 AF, except

#### ■ Infrared (IR) remote control

With a button for the forward and backward slide transport and a mount for the optionally available laser pointer

### Item no.:

reflecta 2500 AF-IR.....Item no. 16802

## Accessories

- Projector bag
- Rotary tray (for 100 slides)
- Interchangeable lenses (zoom, wide angle or high aperture lenses)
- Slide mounts (with/without glass) and magazines (universal, original CS system) according to DIN standard
- Projection screens
- Lamps
- Projection tables



## reflecta film and slide scanners

**S1-Scan**

The reflecta S1-Scan offers a 2,4" LCD-Display on which you can see the pictures right away, an integrated storage of 32 MB, an integrated SD/SDHC-card slot as well as a TV-Out- and USB port. Therefore reflecta S1-Scan is universal and PC independent and with his small, compact and handy size all-round deployable. Via the menu it's possible to arrange a brightness correction. The Scans can be directly stored at the SD/SDHC card via the card slot to display them afterwards onto a Digital Photo frame. The files card can be transferred onto the Computer via the USB-cable. The enclosed software is only an image editing program.

**x7-Scan**

With the reflecta x7-Scan with 3600 dpi resolution on it is possible to scan with 14,0 Megapixel and beside film and slide additionally pocketfilm (110). The reflecta x7-Scan offers a 2,4" LCD-Display, an integrated SD/SDHC card slot and a Lithium-Ion battery to allow using the scanner completely independent from a PC or power supply, respective as Stand-Alone Scanner. The Scans can be directly stored at the SD/SDHC card via the card slot to display them afterwards onto a Digital Photo Frame. The files from SD/SDHC card can be transferred onto the Computer via the USB port and USB-cable. The enclosed Software is only an image editing program.

**x5-Scan**

The reflecta x5-Scan regulates about 2,4 inch LCD-Display on which you can see the pictures immediately, stored on 32 MB internal memory, an integrated SD/SDHC-card slot as well as a TV-Out and a USB port. The reflecta x5-Scan is universal and PC independent de-ployable. With the SD-card slot the pictures can be stored directly on SD card for watching them as example on a Digital Picture Frame. The files can be transferred onto the computer via the USB-Cable. The brightness can be quickly adjusted by the correction button on top of the scanner. The enclosed software is only an image editing program.

**MemoScan**

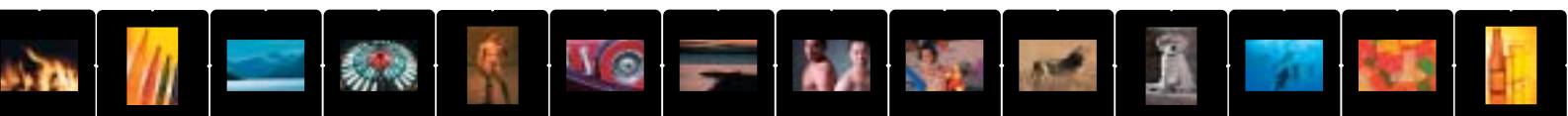
The reflecta MemoScan is the first scanner with CMOS sensor which offers an automatic dust and scratch removal via infrared sensor (**MAGIC TOUCH**). The fast scan speed and the dust and scratch removal function allow for an efficient working. The included slide holder accommodates up to 4 mounted slides, the film holder film strips with up to 6 photos.

**x1-Scan**

Due to the application of a high performance CMOS image sensor and the enhancement of the color depth from 24 bit to 30 bit, the x1-Scan achieves very good scans. The scanning speed is only 1 second at 1800 ppi fine scan. Quick connection using USB 2.0; no additional mains adapter required.

**IMAGEBOX LCD9**

With the reflecta IMAGEBOX LCD9 it is very easy to scan slides, negatives and photos. The new Imagebox LCD9 has an amazing resolution of 9 megapixels (2400 dpi), as well as a 2,7" LCD-Display. Thereby the IMAGEBOX LCD9 is computer independent and can nearly be used always and everywhere. A highlight is the MAGIC TOUCH technology, a scratch and dust removal system based on infrared technology for slides and negatives (not for photos!). To scan the photos (up to size 10x15 cm) just put them on the scan surface and start. You don't need a holder.





**iScan 3600**

The iScan 3600 is a model with a favourable price and easy operating with 3600 dpi. Due to the CCD sensor it has a lot of professional features to digitalise quick and comfortable all negatives and slides. This digital files could be processed in a different way on a computer.



**DigitDia 6000**

The DigitDia 6000 is the only scanner which allows you to scan slides directly from the slide magazine in batch operation. With a resolution of 5000 dpi and a colour depth of 48 bit, the reflecta DigitDia 6000 produces scans in top quality. The fast scanning speed together with the integrated dust and scratch removal feature **MAGIC TOUCH 3** allow for an effective working. The scanner offers automatic scanning of up to 100 slides straight from the magazine (CS, Universal, LKM and Paximat) to save time.



**RPS-7200 Professional**

The RPS 7200 Filmscanner offers the highest resolution and simultaneously a favourable price. The scanner increases the productivity by using the batch scanning possibility. The auto film-loader allows scanning film stripes up to 36 exposures means a whole film roll. The amazing resolution of 7200x7200 dpi and his enormous flexibility will makes this scanners as first choice for demanding jobs in imaging editorial offices, photo studios, graphic studios, science institutes, but also in the home sector.



**CrystalScan 7200**

This scanner is the ideal de-vice for high-resolution digitalization of your slides and negatives. The scanner is equipped with 7200x3600 dpi permitting extremely high-quality print production up to A4 size. Therefore the fast scanning speed and the digital ICE3™ – hardware dust and scratch removal - enables the user a effective working.



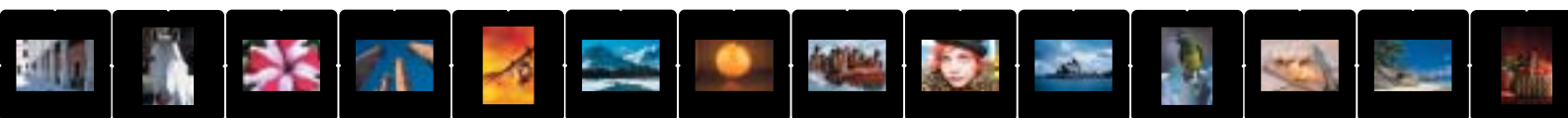
**ProScan 7200**

The ProScan 7200 provides an optical Resolution of 3600 dpi, a Dynamic Range of 3.8 Dmax and an extreme fast scanning time of 1 min 35 Sec for an colour scan with 3600 dpi and 48 Bit Colour Depth. The high scanning speed and also the hardware based dust and scratch removal system ICE contribute the ProScan 7200 to a very effective working tool. Using the attached slide and filmholder allows a high Scan efficiency and finally results in a time saving.



**Midformatscanner MF 5000**

With the first reflecta Midformat-scanner it is possible to scan 120/220 mm, 6x4,5, 6x6, 6x7, 6x8, 6x9, 6x12 as well as 35 mm (positive and negative). Due to the application of 3-lines-CCD Sensor with **MAGIC TOUCH 3** (automatic Dust and Scratch removal with infrared sensor) you can expect excellent quality.



Some of the scanners shown are also available with SilverFast software.



Agomar MC 2.4/90

Short description:

- Wide aperture, rapid, multi-coated lens with 4 elements, top quality
- Focal length 90 mm
- Shaft 42.5 mm for Classic series projectors and 1800 AF

Item no.:

Agomar MC 2.4/90 .....Item no. 1052

Vario-Agomar MC 4.0/85-150

Short description:

- Zoom lens which adapts to any projection situation. Covers a larger range of focal lengths, 7 elements, coated.
- Focal length 85 mm to 150 mm
- Shaft 42.5 mm for Classic series projectors and 1800 AF

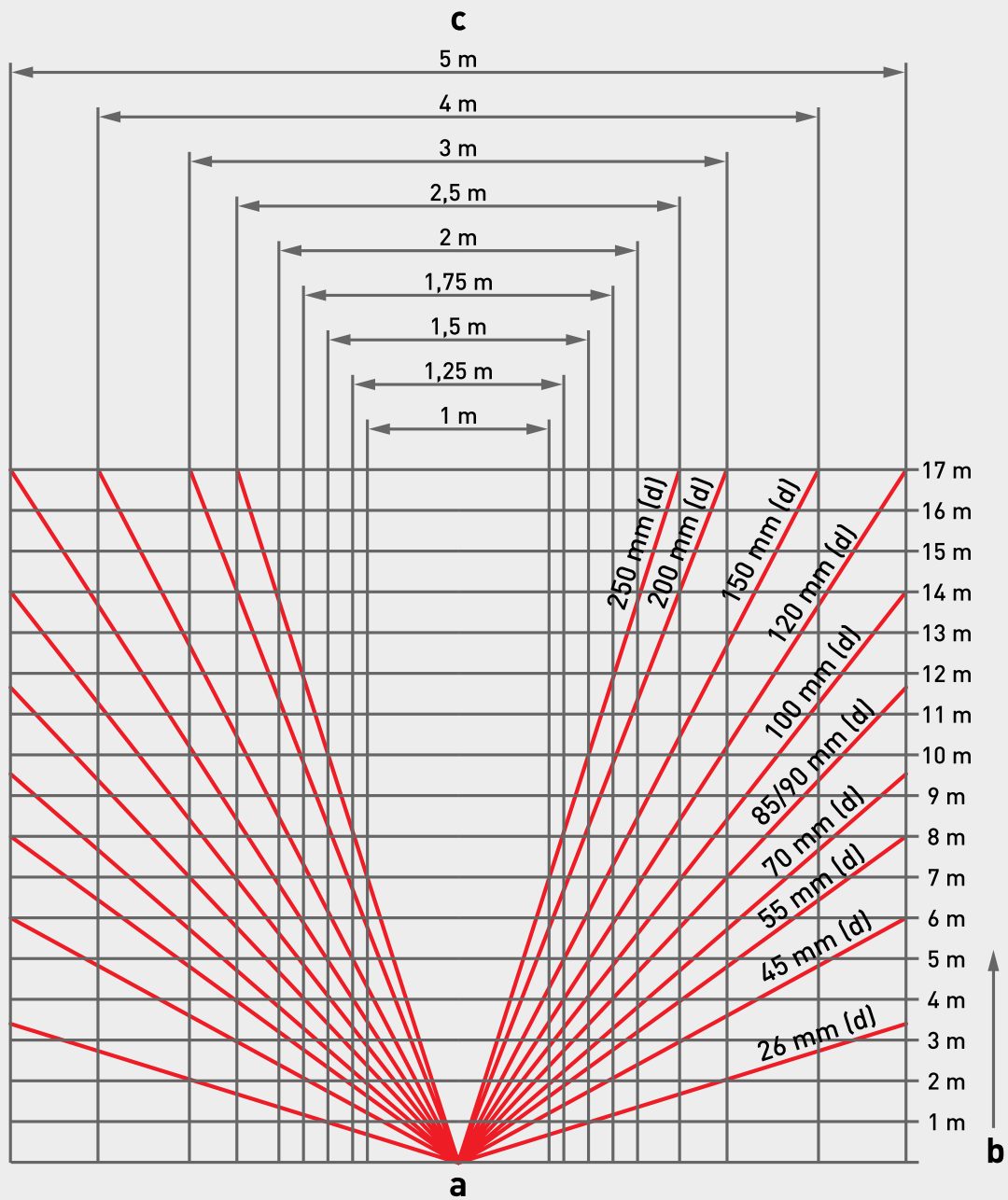
Item no.:

Vario Agomar MC 4.0 / 85-150 ....Item no. 1054





# Focal length table



a = Leuchtwinkel b = Projektionsentfernung c = Bildbreite (bei KB-Dias) d = Brennweite

### Calculating the focal length of a lens:

$$\frac{\text{Slide width (mm)} \times \text{projection distance (mm)}}{\text{Projection screen width (mm)}} = \text{Focal length of lens (mm)}$$

### Example:

$$\frac{36 \text{ mm} \times 4500 \text{ mm}}{1800 \text{ mm}} = 90 \text{ mm}$$

### Calculating the projection distance:

$$\frac{\text{Focal length of lens (mm)} \times \text{Projection screen width (mm)}}{\text{Slide width (mm)}} = \text{Projection distance (mm)}$$

### Calculating the projection screen width:

$$\frac{\text{Slide width (mm)} \times \text{projection distance (mm)}}{\text{Focal length of lens (mm)}} = \text{Projection screen width (mm)}$$



**Slide magazine 2 x 100**

**Short description:**

- The original reflecta CS system
- Slide archiving box for 200 reflecta CS slides
- Box holds two magazines with 100 slides each
- Spill-proof when transporting, handling, etc.
- Stacking system

**Item no.:**

Slide magazine 2 x 100 .....Item no. 1007

**Slide magazine Universal**

**Short description:**

- Quality according to DIN 108
- 2 slide archiving boxes for 100 slides each
- Each box holds 2 magazines with 50 slides each
- Stacking system

**Item no.:**

Slide magazine 2 x 50  
(twin set) .....Item no. 1020002



**Held securely...**

Slides in CS and CS 2 mounts are securely stored in the CS magazines. Slides will not slip out even if a filled magazine falls down.

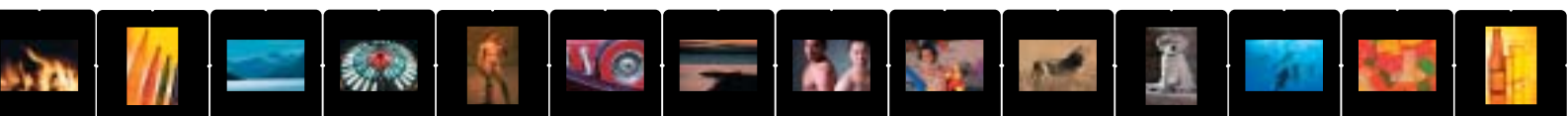
**Rotary tray 100 / 100 S**

**Short description:**

- Rotary slide tray for 100 slides with a thickness of 2 mm to 3.2 mm (rotary tray 100)
- Rotary slide tray for 100 glassless slides with a thickness of up to 2 mm (rotary tray 100 S)
- Only for projectors of the 2500 and 3000 series (no adapter required)

**Item no.:**

Rotary tray 100 .....Item no. 16063  
Rotary tray 100 S .....Item no. 16064



## CS slide mounts

**Short description:**

- Glassless slide mount (DIN 108)
- Spill-proof, saves 50% space in original reflecta CS magazine (100 or 40 slides)
- Single-piece mount, folds on 36 mm long side
- Two-coloured, clicks to close
- 1.8 mm thick
- For 24 mm x 36 mm slides
- External dimension 5 cm x 5 cm

**Item no.:**

100 pcs. box.....Item no. 1005  
 200 pcs. box.....Item no. 1042

## CS 2 slide mounts

**Short description:**

- Glassless slide mount (DIN 108)
- Spill-proof, saves 50% space in original reflecta CS magazine (100 or 40 slides)
- Single-piece mount, folds on 24 mm short side
- Two-coloured, clicks to close
- 1.8 mm thick
- For 24 mm x 36 mm slides
- External dimension 5 cm x 5 cm

**Item no.:**

100 pcs. box.....Item no. 61311

## GL-AN slide mounts

**Short description:**

- Glass slide mount (DIN 108)
- Anti-Newton glass (GL-AN)
- Single-piece mount
- Two-coloured, clicks to close
- 3.2 mm thick
- Suitable for mounting stereo photography slides
- For 24 mm x 36 mm slides
- External dimension 5 cm x 5 cm

**Item no.:**

100 pcs. box  
 (GL-AN).....Item no. 1198



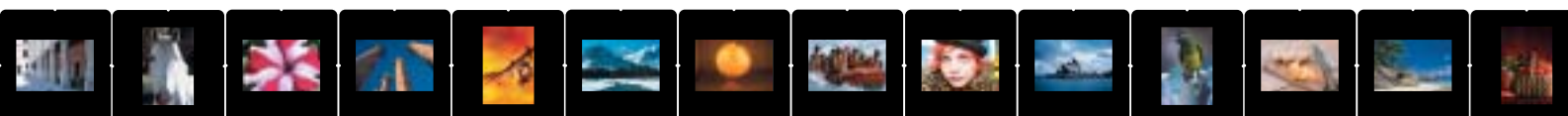
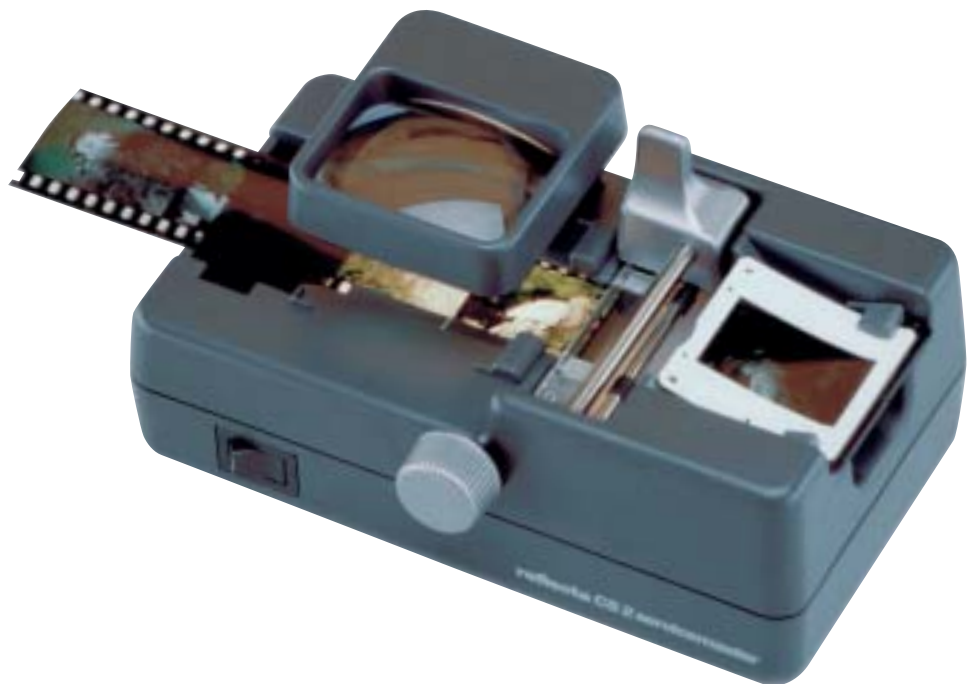
## Servicemaster CS 2

**Short description:**

- Slide mounter for reflecta CS 2 slide mounts (item no. 61311 / 61312)

**Item no.:**

Servicemaster CS 2 .....Item no. 63311



## Projector bags

### Short description:

- Water-repelling, abrasion-resistant material
- Black, with embroidered reflecta logo
- Padded, two-way zip on the top lid
- Reinforced bag base with integrated rest button
- Anti-skid shoulder strap

### Modell »Midi«:

- 360 mm x 170 mm x 300 mm
- 600 g
- For Classic, 1800 AF, Galaxy...

### Item no.:

Midi.....Item no. 50601



## Halogen lamps

### Short description:

- Halogen lamp for recording, projecting and dark room
- 24 Volt
- 150 or 250 Watt

### Item no.:

Halogen lamp 150 W.....no. 2063

Halogen lamp 250 W.....no. 2064





## Viewer B36

**Short description:**

- 36 mm x 36 mm light panel
- Bright and even light
- Battery operated
- Compact and lightweight
- Dimensions: 10 cm x 6 cm x 1.5 cm

**Item no.:**

B36 .....Item no. 1036



## Viewer B40

**Short description:**

- Solar-operated slide viewer
- For slides or film strips
- 2-times magnification
- Blister Packaging

**Item no.:**

B40 .....Item no. 1030



## Viewer B220

**Short description:**

- Mains-operated slide viewer
- Slot for fast slide change
- 2.5-times magnification
- Supply slot and collecting tray

**Item no.:**

B220 .....Item no. 1038



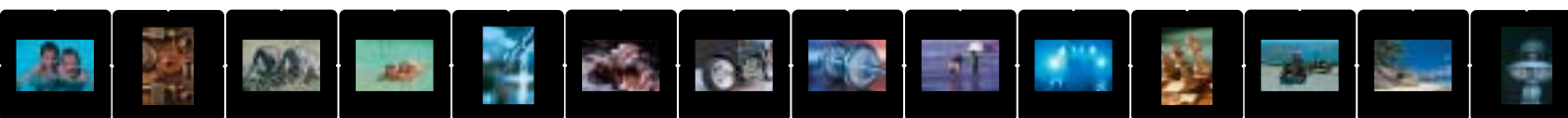
## Viewer B250

**Short description:**

- 2-times magnification
- Battery or mains operated
- For slides and film strips 24 mm x 36 mm or 120 roll films
- Fluorescent lamp 5000 °K
- Power adapter (accessory), item no.10330

**Item no.:**

B250.....Item no. 10305



**Light panel L1400**

**Short description:**

- 450 mm x 300 mm
- Can be mounted to a wall
- Mains-operated, power adapter 24 V, 2000 mA
- Colour temperature 5000 °K +/- 270 °K
- Dimensions: 550 mm x 405 mm x 30 mm

**Item no.:**

L1400.....Item no. 10306  
 Replacement tube .....Item no. 1030601

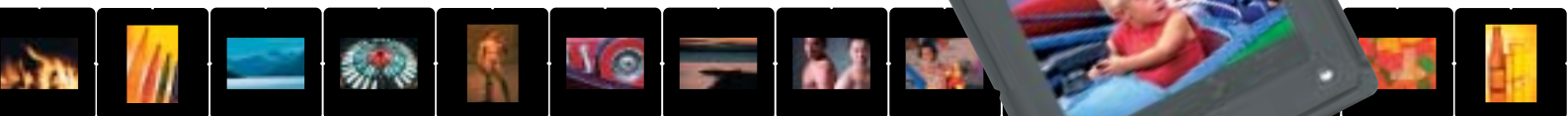
**Light panel L1800**

**Short description:**

- 610 mm x 300 mm
- Can be mounted to a wall
- Mains-operated, power adapter 24 V, 2000 mA
- Colour temperature 5000 °K +/- 270 °K
- Dimensions: 703 mm x 405 mm x 30 mm

**Item no.:**

L1800.....Item no. 10307  
 Replacement tube .....Item no. 1030701



## Light panel L130

### Short description:

- Viewing area 127 mm x 100 mm
- Battery operated (6 x 1.5 V, micro) or mains operated
- Power adapter (accessory) 9 V, 600 mA, Item no.10330
- Colour temperature 5000 °K +/- 270 °K
- Lamp life is 10,000 h
- Dimensions: 158 mm x 150 mm x 14 mm

### Item no.:

L130.....Item no. 10301  
 Replacement tube .....Item no. 1030101



## Light panel L230

### Short description:

- Viewing area 178 x 127 mm
- Battery operated (6 x 1.5 V, micro) or mains operated
- Power adapter (accessory) 9 V, 600 mA, Item no.10330
- Colour temperature 5000 °K +/- 270 °K
- Lamp life is 10,000 h
- Dimensions: 220 mm x 190 mm x 21 mm

### Item no.:

L230.....Item no. 10302  
 Replacement tube .....Item no. 1030201



## Folding monitor

### Short description:

- Folding monitor for all projectors for viewing either on the monitor or a projection screen
- Monitor size 20 cm x 20 cm

### Item no.:

Folding monitor .....Item no. 1501



## Light panel L300

### Short description:

- Viewing area 200 x 150 mm
- Mains-operated, power adapter 12 V, 1000 mA
- Colour temperature 5000 °K +/- 270 °K
- Lamp life is 10,000 h
- Dimensions: 246 mm x 193 mm x 20 mm

### Item no.:

L300.....Item no. 10303  
 Replacement tube .....Item no. 1030301



## Light panel L600

### Short description:

- Viewing area 300 x 200 mm
- Mains-operated, power adapter 12 V, 1000 mA
- Colour temperature 5000 °K +/- 270 °K
- Lamp life is 10,000 h
- Dimensions: 370 mm x 275 mm x 25 mm

### Item no.:

L600.....Item no. 10304  
 Replacement tube .....Item no. 1030401

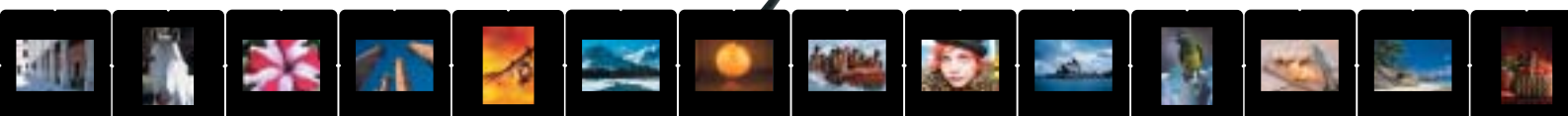


Optional power adapter

### Item no.:

Power adapter.....Item no. 10330  
 (for L130, L230, B250)

Power adapter.....Item no. 10331  
 (for L300 and L600)





Projection table Dino

Short description:

- Height can be adjusted from 63 cm to 98 cm
- Viewing area 38 cm x 37 cm
- Movable rollers, two locking rollers
- Maximum load 25 kg

Item no.:

Dino .....Item no. 6055

Projection table Senior

Short description:

- Stable and versatile projection table
- 2 trays, top tray can be inclined via crank handle
- Adjustable foot to level off uneven floor
- Top tray 49 cm x 35 cm / bottom tray 41 cm x 28 cm
- Height 100 cm

Item no.:

Senior .....Item no. 6051

Projection table Carlos

Short description:

- Stable and versatile projection table
- 3 trays, top tray can be inclined via crank handle
- Adjustable foot to level off uneven floor
- 2 offset top trays 49 cm x 35 cm / bottom tray 41 cm x 28 cm
- Height 105 cm

Item no.:

Carlos .....Item no. 6052





Projection screens



CineHome



Crystalline Rollo

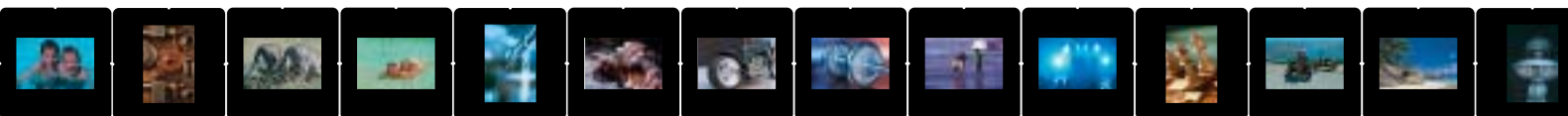


Tripod Silverline



Spring Roller with stop mechanism

The screen shown on that page are only a small part of our product range. Please ask for our screen catalogue.





Assembling the 2500 and 3000 series



Assembling the 2000 series

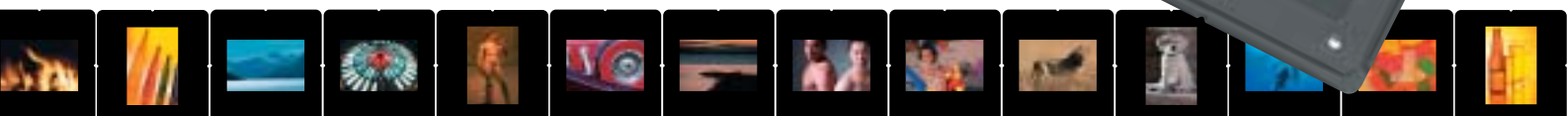
**The latest manufacturing methods are used to produce slide projectors which live up to the quality standards set by the reflecta brand.**

The high requirements in the quality of our slide projectors with even more effective production led our company to introduce the latest manufacturing methods for the production of our projectors.

So far, several persons assembled slide projectors on assembly lines. This type of manufacturing was very intensive in human resources and revealed certain weaknesses regarding quality.

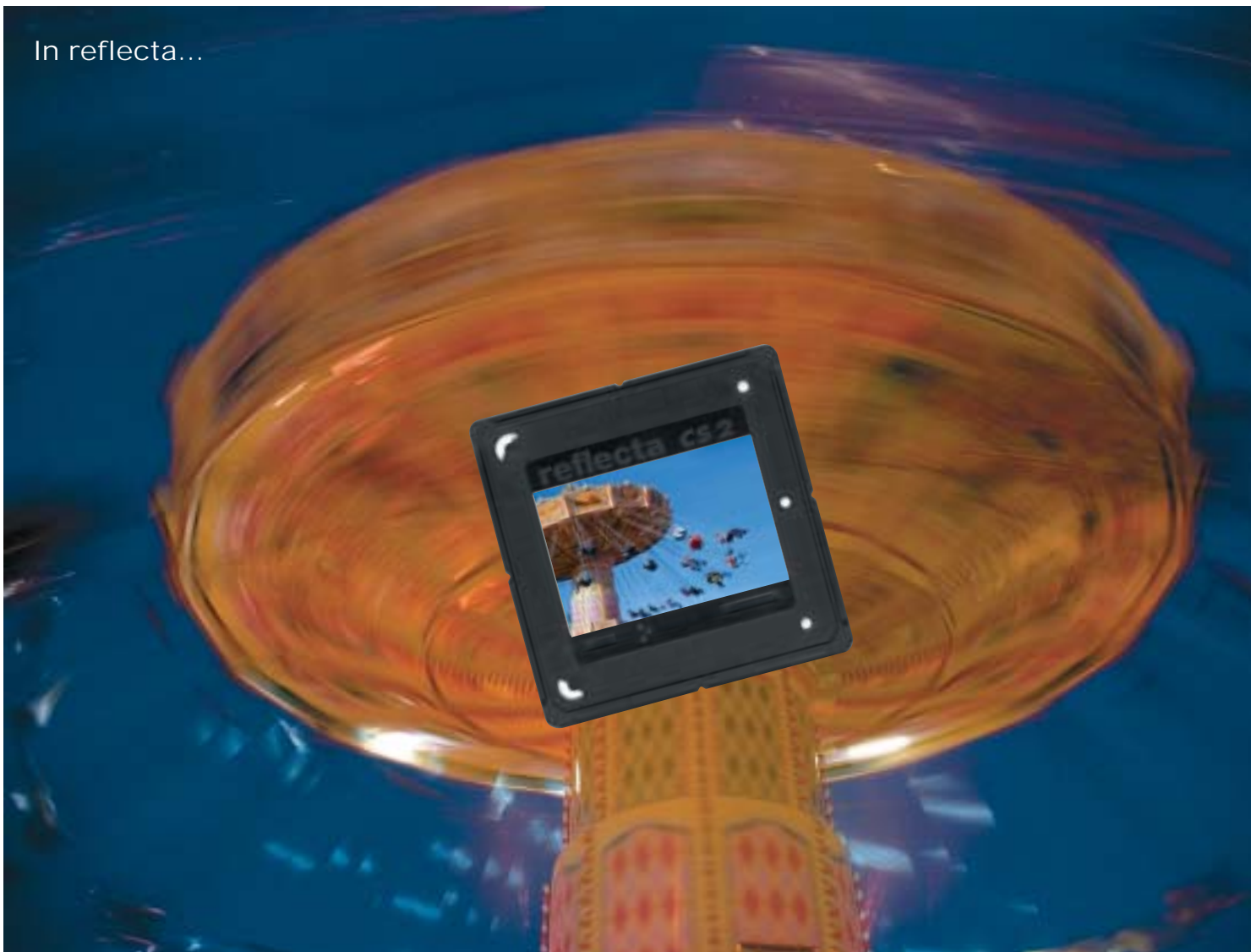
This is the reason why our projectors have been mounted on assembly tables since 2000. On a rotating assembly table, the same person builds ten complete slide projectors in a single workflow. The tables are designed in a way that all required parts and tools are within direct reach. The first functional check is also carried out at this table, and the employees identify "their" products with a corresponding coding. This type of manufacturing provides for a significantly larger identification of our employees with the units they produce. This, in turns, leads to greater work fulfilment, higher efficiency and better quality. In a separate final check, all slide projectors are tested for all functions immediately after their completion. This allows for an immediate feedback to manufacturing where necessary. This method helped to reduce the margin of error to a minimum.

Every year, thousands of slide projectors "Made in Germany" leave our premises.



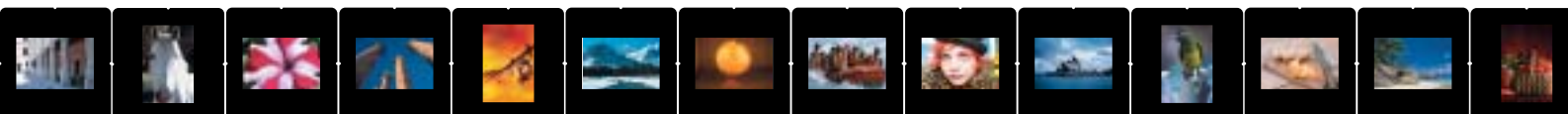
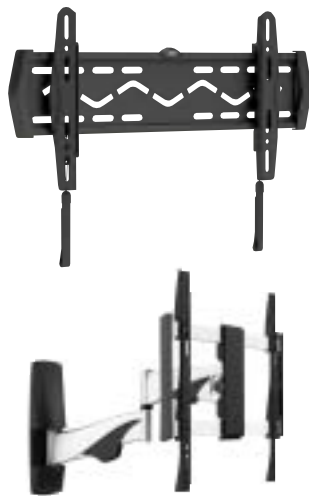


In reflecta...



...all center on images:  
There are detailed catalogues  
of our other products  
available. Ask for them – we  
will gladly send them to you.

- Mounts /Brackets
- Presentation technique
- Scanners
- Video Lights





As part of our continued efforts to improve the quality of our products,  
we reserve the right to change our products without notification.  
Item no. 72204, © reflecta Germany / Version 04/13

**reflecta<sup>®</sup>**

reflecta GmbH  
Junghansring 60  
D-72108 Rottenburg  
Phone +49(0)74 57/94 65-60  
Fax +49(0)74 57/94 65-72  
mail@reflecta.de  
www.reflecta.de