

2019 Community Parks & Recreation Inventory

City of Proctor, Minnesota



Table of Contents

Table of Contents	1
Overview	2
Public Land Ownership	3
Citizen Access to Parks & Recreation	5
Parks & Recreation Facilities Inventory	7
North Proctor Park	8
South St. Louis County Fair Grounds	10
Proctor Regional Recreation Center	12
Proctor Sport Court	14
Centennial Park	16
Non-Motorized Trail/Sidewalk System	18
Partner-Owned Parks & Recreation Facilities	20
St. Lukes Event Center and Arena	20
Egerdahl Memorial Field	20
Klang Memorial Park	20
Bay View Elementary School Campus	21
Proctor High School/A.I. Jedlicka Middle School Campus	21
St. Rose Playground	21
Midway Park	22
Larry Shelton Soccer Fields	22
Spirit Mountain Recreation Area	22
Skyline Parkway Scenic Byway	22

Overview

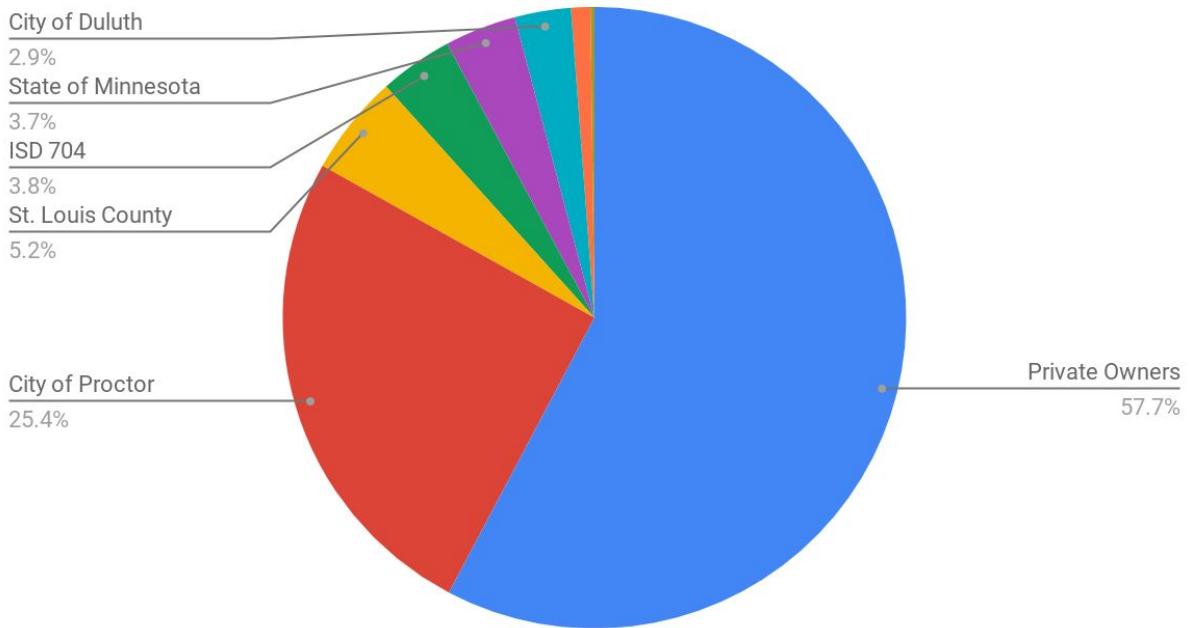
The 2019 Community Parks & Recreation Inventory for the City of Proctor, Minnesota, was created to aid development efforts of the City of Proctor. This inventory takes a snapshot of parks and recreation facilities in the city and surrounding area in 2019.

To develop this snapshot, information about public land ownership and population density is presented first, followed by a list of parks and recreation lands owned by the City of Proctor. The inventory also lists parks and recreation facilities in the Proctor community and owned by other governments or entities; these features are listed to help the City of Proctor understand the network of recreation facilities Proctor citizens can access and to potentially identify gaps in its parks and recreation system.

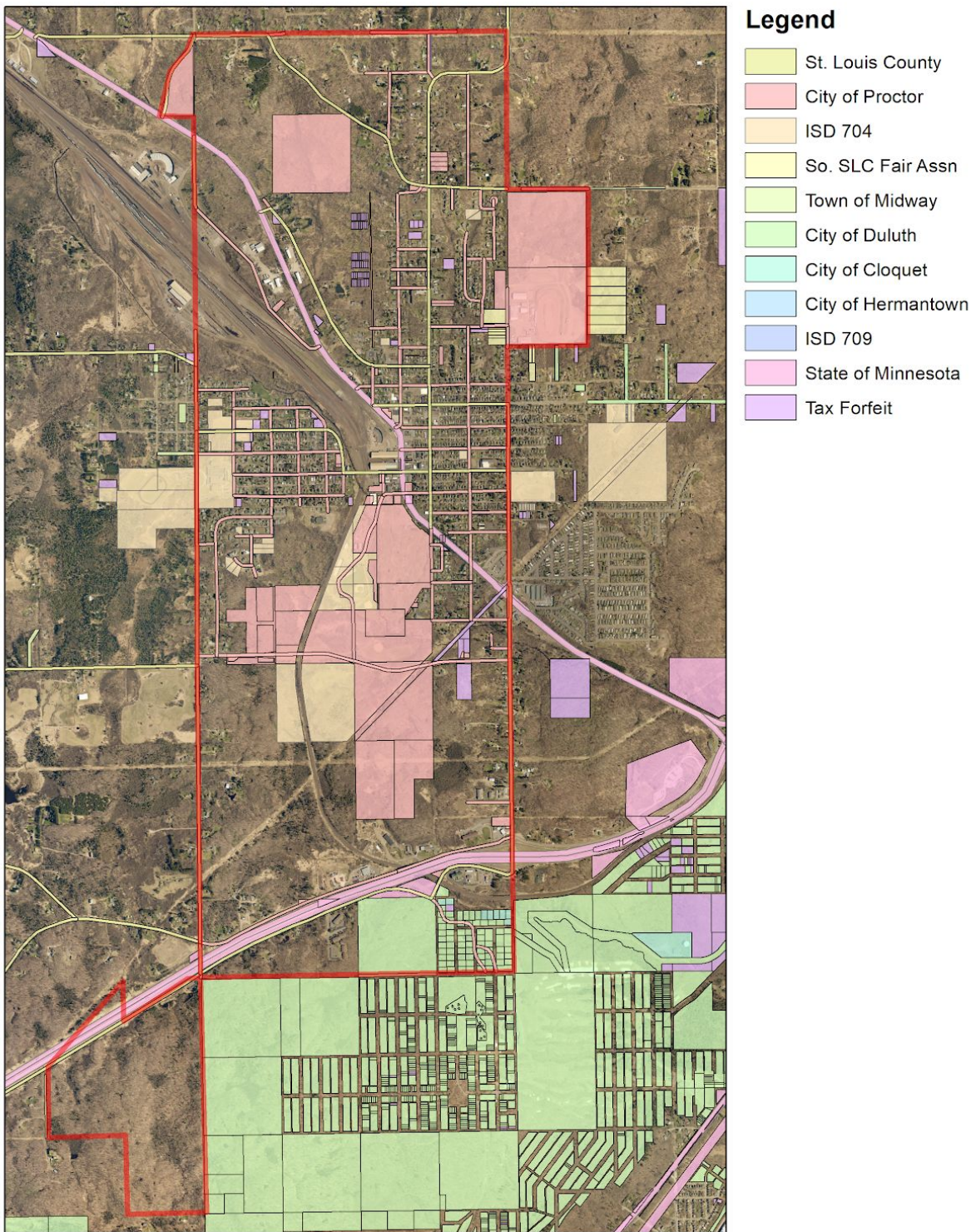
Public Land Ownership

Of the 2,161.85 acres contained in the city of Proctor, 1,242.38 (57.7%) acres are privately owned, 546.26 acres (25.4%) are owned by the City of Proctor, 113.4 acres (5.2%) are owned by St. Louis County, 80.88 acres (3.8%) are owned by Proctor Public Schools (ISD 704), 77.89 acres (3.7%) are owned by the State of Minnesota, 63.22 acres (2.9%) are owned by the City of Duluth, 22.26 acres (1.0%) are tax forfeit, and 4.55 acres (0.2%) are owned by the St. Louis County Fair Association. The following chart visualizes the breakdown of land ownership.

Land Ownership in the City of Proctor



Public Land Ownership in the City of Proctor



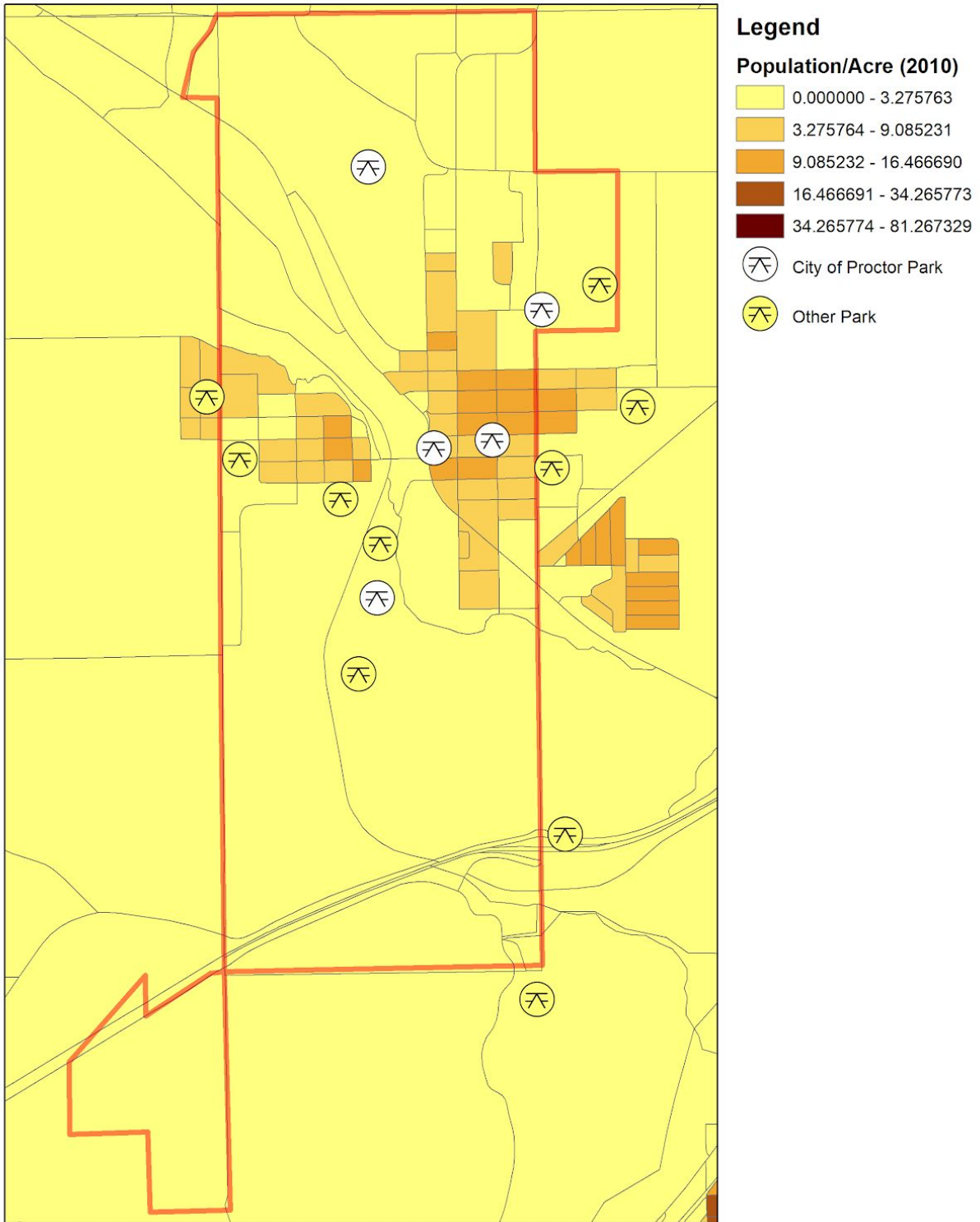
Citizen Access to Parks & Recreation

The map on the following page visualizes where people live in the Proctor community.

Where citizens live is important in the context of public recreation facilities because many people who are intended to utilize them, like children and seniors, can only access them independently by walking or biking. Locating a park inside of a neighborhood encourages citizens to visit often, which makes the parks safer, more secure, and better maintained.

On the contrary, when parks are developed away from where people live, funding designated for parks and recreation are often spent on access roads and parking lots instead of recreation equipment and facilities. Access roads and parking lots do not further recreation in a community.

Population Density in the City of Proctor



Parks & Recreation Facilities Inventory

The following inventory includes parks and other recreation lands both within the city of Proctor and owned by the City of Proctor. Recreation facilities in the Proctor community and owned by other governments or entities are listed at the end of this inventory.

North Proctor Park

Location: North Proctor (North of Old Highway 2, South of St. Louis River Road)

Parcel id number(s): 185-0240-00070

Lot(s) size: 40 acres

Off-street parking capacity: 2 stalls, off of St. Louis River Road

Recreation facilities: Natural area





Caption: Aerial map and imagery of North Proctor Park

South St. Louis County Fair Grounds

Location: North Proctor (East of Intersection of N. Boundary Avenue and 9th Street)

Parcel id number(s): 185-0200-00735, 185-0240-00011, 185-0240-00012

Lot(s) size: 78.85 acres (approx.)

Off-street parking capacity: 350 stalls (approx., including on adjacent land owned by the So. St. Louis County Fair Association)

Recreation facilities: Fair buildings, Dirt Floor Arena, Proctor Speedway, Lake Superior R/C Car Club outdoor course; adjacent to outdoor ice rinks and soccer fields owned by the South St. Louis County Fair Association (see: Larry Shelton Soccer Fields)

Special note: Zoned “Open/Recreational”





Caption: Aerial map and imagery of the Fair Grounds; City-owned parcels are labelled

Proctor Regional Recreation Center

Location: Central Proctor (Along Pionk Drive, South of 1st Street, North of Kirkus Street)

Parcel id number(s): 185-0110-00010, 185-0110-00060, 185-0110-00870, 185-0240-00534, 185-0240-00538, 185-0240-00600, 185-0240-00607, 185-0240-00608, 185-0240-00610, 185-0240-00614, 185-0240-00630

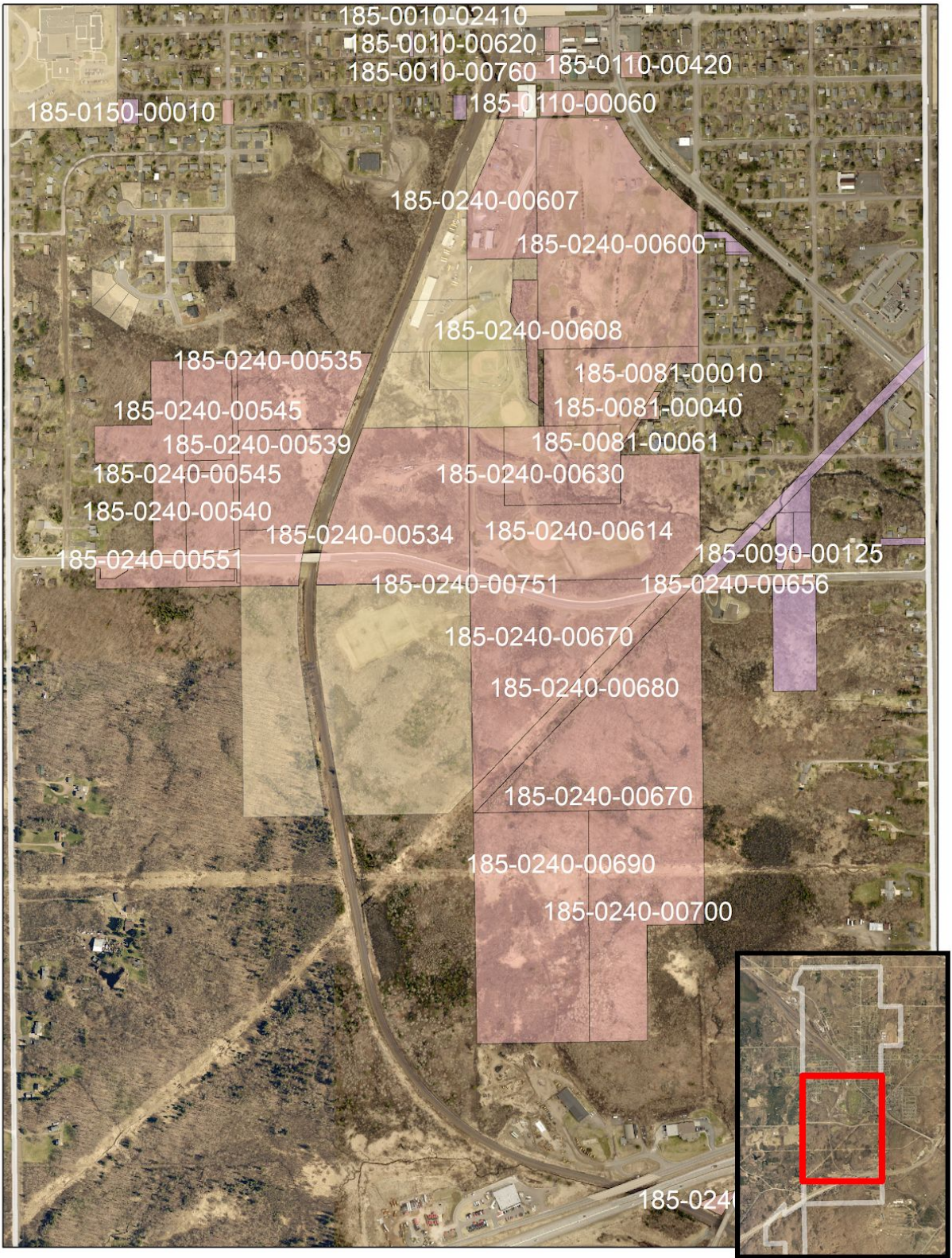
Lot(s) size: 85 acres (approx.)

Off-street parking capacity: 180 stalls (approx.)

Recreation facilities: Two softball fields, 9-hole golf course, soccer field, Playground for EveryBODY, fitness trail loop, three concession stands/washroom facilities, clubhouse, historical museum, two lunch pavilions, gazebo, community center; adjacent to artificial turf field (see: Egerdahl Memorial Field), arena and event center (see: St. Luke's Arena and Event Center)

Special note: Zoned "Open/Recreational." In addition, City-owned parcels south of Kirkus Street (185-0240-00670, 185-0240-00690, 185-0240-00700, 185-0240-00552) hold 70.94 acres of currently undeveloped land, and City-owned parcels west of the rail tracks (185-0240-00552, 185-0240-00539, 185-0240-00535, 185-0240-00545, 185-0240-00540) hold 32.95 acres of currently undeveloped land.





Caption: Aerial map and imagery of Proctor Regional Recreation Center; City-owned parcels are labelled

Proctor Sport Court

Location: Central Proctor (Intersection of 3rd Street and 1st Avenue)

Parcel id number(s): 185-0040-00540

Lot(s) size: 1 acre (approx.)

Off-street parking capacity: 0 stalls

Recreation facilities: Basketball court, pickleball courts





Caption: Aerial map and imagery of Proctor Sport Court

Centennial Park

Location: Central Proctor (200 block of 3rd Avenue/Highway 2)

Parcel id number(s): 185-0110-01190

Lot(s) size: 0.1 acre

Off-street parking capacity: 0 stalls

Recreation facilities: Urban green space, picnic area

Special note: Adjacent lot (185-0110-01160) is used as an extension of the park but owned by Northwestern Bell Telephone Company





Caption: Aerial map and imagery of Centennial Park

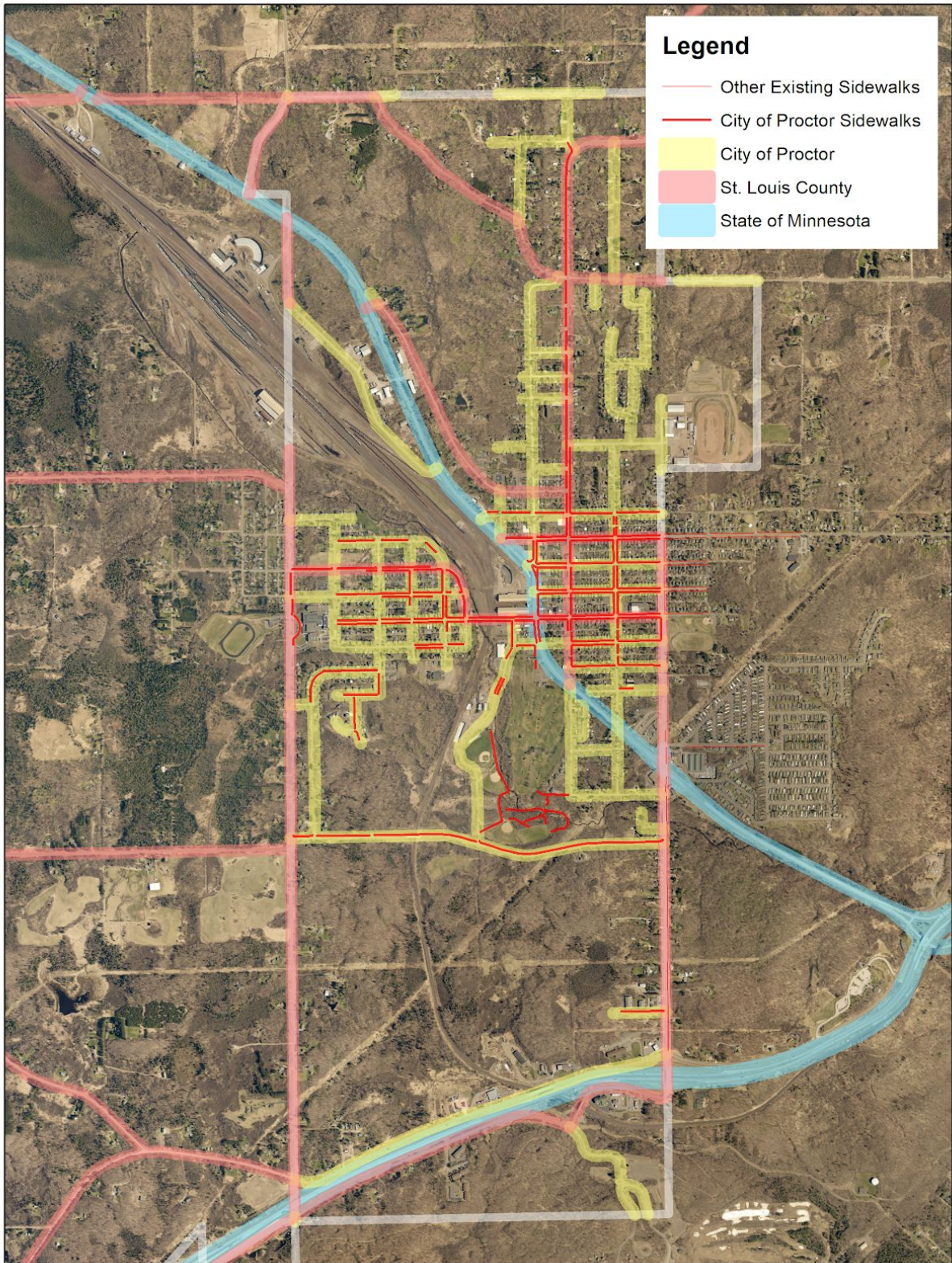
Non-Motorized Trail/Sidewalk System

Location: Throughout city

Length: 12 miles (approx.)

Special note: Ownership of this system is parsed out by segment and depends upon segment placement on property or right of way. Collectively, the trail system in the city of Proctor is owned by the City of Proctor, St. Louis County, and the Minnesota Department of Transportation. This includes public right-of-way (offering recreational facilities for bicycles, ATVs, and snowmobiles [on streets] and pedestrians [on streets and sidewalks]) and trails within designated parklands. By ordinance, property owners are required to maintain any sidewalk abutting their properties; this includes keeping a sidewalk clear of snow and debris as well as initiating and paying for reconstruction of sidewalks. Property owners are also required to help pay for maintenance of streets and roadways abutting their properties, though streets projects are generally initiated by the public agency (City, County, State) who owns the street or road.





Caption: Aerial map and imagery of roads and non-motorized trails/sidewalks

Partner-Owned Parks & Recreation Facilities

St. Lukes Event Center and Arena

Owner: ISD 704 - Proctor Public Schools

Location: South Proctor (704 Kirkus Street)

Parcel id number(s): 185-0240-00750

Lot(s) size: 36.67 acres

Off-street parking capacity: 120 stalls

Recreation facilities: Indoor ice arena, indoor walking track, outdoor ice rinks

Egerdahl Memorial Field

Owner: ISD 704 - Proctor Public Schools

Location: Central Proctor (Along Pionk Drive)

Parcel id number(s): 185-0240-00604, 185-0240-00533, 185-0240-00602, 185-0240-00537, 185-0240-00538, 185-0240-00531

Lot(s) size: 19 acres (approx.)

Off-street parking capacity: 120 stalls (approx.)

Recreation facilities: Artificial turf field

Special note: Zoned "Open/Recreational"

Klang Memorial Park

Owner: ISD 704 - Proctor Public Schools

Location: Bay View Heights (Intersection of Boundary Avenue and Orchard Street)

Parcel id number(s): 010-3480-02300

Lot(s) size: 8 acres (approx.)

Off-street parking capacity: 0 stalls

Recreation facilities: Little league baseball fields, track and field, playground, swing set, benches, grills



Bay View Elementary School Campus

Owner: ISD 704 - Proctor Public Schools

Location: Bay View Heights (8708 Vinland Street)

Parcel id number(s): 010-0240-00290, 010-0240-00590, 010-0240-00600, 010-2741-00980

Lot(s) size: 40 acres (approx.)

Off-street parking capacity: 120 (approx.)

Recreation facilities: Sport court, playground, elementary school forest trails, gymnasium, indoor climbing wall

Proctor High School/A.I. Jedlicka Middle School Campus

Owner: ISD 704 - Proctor Public Schools

Location: West Proctor (131 N. 9th Avenue)

Parcel id number(s): 450-0090-00150, 450-0010-01825, 450-0010-01840, 450-0010-01850, 450-0010-02015, 185-0240-00520, 185-0083-00640, 185-0083-00490, 185-0083-00270, 185-0083-00160, 185-0150-01950, 185-0150-01140

Lot(s) size: 80 (approx.)

Off-street parking capacity: 280 stalls (approx.)

Recreation facilities: Track and field, practice football field, soccer field, high school forest trails, middle school forest trails, pool, gymnasium, field house, fitness center

St. Rose Playground

Owner: St. Rose Lima Church

Location: West Proctor (3 Sixth Avenue)

Parcel id number(s): 185-0240-00532

Lot(s) size: 6.76 acres

Off-street parking capacity: 50 stalls (approx.)

Recreation facilities: Playground, swing set, basketball hoops



Midway Park

Owner: Midway Township

Location: Midway Township (South of Hill Street)

Parcel id number(s): 450-0070-00120

Lot(s) size: 1 acre (approx.)

Off-street parking capacity: 0 stalls

Recreation facilities: Playground, swings, jungle gym, soccer fields, benches, and chained fence backstop, community bulletin board

Larry Shelton Soccer Fields

Owner: South St. Louis County Fair Association

Location: Bay View Heights (East of 87th Avenue West)

Parcel id number(s): 010-2741-00460, 010-2741-00470, 010-2741-00490, 010-2741-00480, 010-2741-00500, 010-2741-00510, 010-2741-00520

Lot(s) size: 17.5 acres

Off-street parking capacity: (See: Proctor Fairgrounds)

Recreation facilities: Two soccer fields

Spirit Mountain Recreation Area

Owner: City of Duluth

Location: South Proctor/Riverside

Parcel id number(s): 185-0240-01190, 185-0080-00230, etc.

Lot(s) size: 36 acres (approx.)

Off-street parking capacity: 350 stalls (approx.)

Recreation facilities: Ski hills, x-ski trails, mountain bike trails, adventure park, hiking trails

Skyline Parkway Scenic Byway

Owner: City of Duluth/Minnesota Department of Transportation

Location: South Proctor/Duluth Ridgeline (I-35 overpass bridge)

Recreation facilities: Scenic drive, Thompson Hill Information Center

