

PROVECTA®

Our products



ICB Pharma's certifications



Company info

- +48 32 745 47 00
- pest@icbpharma.com
- www.icbpharma.com

- ICB Pharma
10 Lema Street
43-600 Jaworzno, Poland



- www.provecta.pl



ICB Pharma

ICB Pharma is a family business, one of the most innovative chemical companies in its sector, operating internationally.

In excellently equipped laboratories, ICB Pharma's scientists create innovative products used in the following sectors: health protection, sanitary hygiene, agriculture, gardening and animal husbandry. The dominant position in the offer is taken by the products dedicated to the elimination of biological threats, e.g. sanitary pests, human external parasites and agrophages.



ICB Pharma's products are the example of most modern solutions, where highest biological efficacy is linked with minimization of unfavorable influence on people and the environment. In case of many of our products, the original and highly advanced technologies – e. g. micro and nano encapsulations - are applied.

ICB Pharma's activity perfectly fits into the development trends in practical chemistry and biology. That is why the manufactured products are appreciated and in common usage worldwide.

In many countries, they introduced a true breakthrough in solving difficult issues concerning environmental threats. ICB Pharma became famous worldwide also for excellent solutions in plant pest management, with no traditional, chemical pesticides.

www.icbpharma.com

Visit us



Innovation is our basic mode of action, thanks to which we create the cutting – edge, breakthrough and unique solutions in the field of chemistry.

In our laboratories dozens of products belonging to Health Care, Crop Solutions, Animal Health and Pest Innovations departments have been created. They are used every day by individual as well as professional users in 70 countries on 6 continents.

Provecta®

Pests accompany people every day. Chemical methods of pest control create resistance to active substances used in the process of their elimination. That makes them even more dangerous. Treatments based on physical mode of action are the only right way to control them effectively, without the risk of pest becoming resistant.

WHAT IS PROVECTA®?

Provecta® is an innovative, patented, sprayable entrapping formulation with a physical mode of action. It is intended to affect larvae and to control resistant crawling and flying pests in hardly accessible locations, all by immobilization.



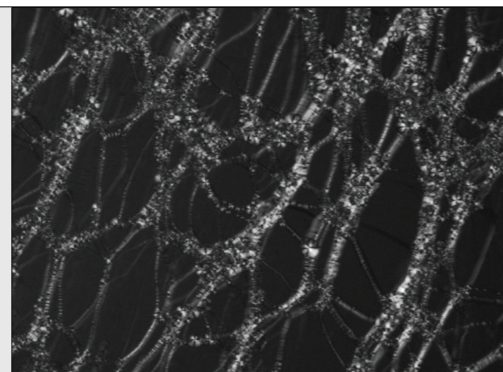
WHAT IS ALL IN WEB TECHNOLOGY?



ALL IN WEB IS THE TECHNOLOGY OF CREATING A 3 – DIMENSIONAL MOLECULAR STRUCTURE, ENTIRELY PERMEABLE, WHICH CAUSES THE IMMEDIATE ENCAPSULATION AND IMMOBILIZATION OF PEST.

ALL IN WEB technology was developed and optimised for effective and environmentally friendly urban pest management.

The product consists of the mixture of specific silicon polymers and cross-linked agents. In the process of polycondensation, it covers the body of a pest with entirely permeable, polymeric net structure.



PROVECTA® IS EFFECTIVE AGAINST



Ants



Beetles, Darking Beetle, Yellow Mealworm, Harlequin Laybird etc.



Bugs, Fleas, Bed Bugs, Dog Flea, Cat Flea



Flies, Mosquitoes



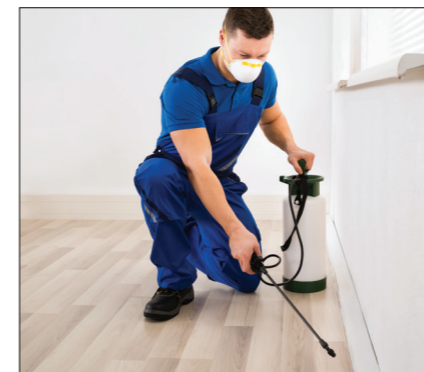
Moths
Includes storage products pests: Mill Moth, Indianmeal Moth



Cockroaches

To enhance effective pest elimination, the parameters of ALL IN WEB technology were optimized according to:


insect's vitality	insect's size and strength	insect's natural habitats
-------------------	----------------------------	---------------------------





The right choice of equipment is a key element to ensure the successful use of Provecta®. It guarantees an even distribution of the correct amount of the working solution thus increasing the efficacy of the product. Only LV sprayers provide the proper drop size which is 80-120 µm (not less than 45 µm).


Why Provecta®

- 

Combined larvicide-adulticide with physical mechanism of action
- 

No risk of resistance
- 

Controls the pest populations in hardly accessible locations
- 

Can be used in the presence of people and pet animals
- 

Provides the immediate knock-down effect
- 

Effective against numerous species of insects and arachnids

DO YOU KNOW...?



Provecta® based on ALL IN WEB technology is a safe and eco-friendly alternative to traditional insecticides. Contrary to the traditional products, which utilize neurotoxins or disable physiological functions of the pest, Provecta® has a physical mode of action, similar to the way a spider web works. It is safe for people and the environment and may be used in residential areas, industrial areas and even in medical facilities.

RECOMMENDED PLACES OF APPLICATION



PROVECTA®
stand alone (mixed with water only)

- Spreads quickly and evenly over surfaces and insects, to ensure complete encapsulation and immobilization.
- Creates no resistance
- Can be used in the presence of food products
- Does not contain any toxic substances
- Product and the deposit of its degradation do not pose any risk to people and their environment
- Leaves no toxic residues on the surface after the treatment
- There is no waiting and withdrawal period after use
- **It is a HACCP friendly product**

PROVECTA®
as TANK MIX with REGISTERED PESTICIDE

- Acts synergistically as adjuvant when mixed with insecticide
- Ensures an even spreading of the insecticide on sprayed surfaces
- Enhances penetration of the insecticides to the hardly accessible places

Calculate the amount of Provecta needed and the cost of the treatment.

Use the calculator available at provecta.eu



RECOMMENDED PLACES OF APPLICATION



Application Guideline

PROVECTA® stand alone (mixed with water only)

<p>BED BUG CONTROL Use Provecta in the entire infested areas including cracks, crevices and any location where insects may gather e. g. mattresses, bed frames, head boards, upholstered furniture. Due to ca. 40 day life cycle, the follow-up application should be conducted 21 days later, but no later than 28 days after the initial application. In temperatures over 30°C, repeat the procedure 14 days after the initial application or whenever the population level increases and re-infestation has been noted.</p>	<p>CONCENTRATION 2%</p>
<p>CRAWLING INSECTS (cockroaches, black ants, pharaoh ants), ARACHNIDS (spiders) Apply formulation topically using a fine mister (LV) - recommended droplet size: 80 - 120 microns. Formulation needs to be reapplied whenever the population become severe and upcoming insects have been seen.</p>	<p>CONCENTRATION 1% (ant control) 2% (other crawling insects and arachnids control)</p>
<p>FLYING INSECTS - INDOOR TREATMENT (flies, mosquitoes) Apply formulation topically using a fine mister (LV) - recommended droplet size: above 50 microns (80 - 120 microns is the optimum range). Ideally, apply topically in the evening when insects (especially flies) are resting on surfaces. Formulation needs to be reapplied whenever the population become severe.</p>	<p>CONCENTRATION 1% (mosquitoes) 2% (flies)</p>
<p>FLYING INSECTS - OUTDOOR TREATMENT (mosquitoes) Apply formulation to mosquito resting locations (small trees, bushes etc.) using a fine mister (LV) - recommended droplet size: above 50 microns (80 - 120 microns is the optimum range). Do not exceed 0,15% concentration when applied on insects present on plants. Higher concentrations may cause phytotoxicity effect (plant damage).</p>	<p>CONCENTRATION 0,15%</p>
<p>STORAGE PRODUCTS PEST CONTROL (<i>Ephestia kuehniella</i>, <i>Plodia</i> spp.) Apply formulation using a fine mister (LV) - recommended droplet size: 50-60 microns. Ideally, apply as a topical treatment for both flying and resting individuals.</p>	<p>CONCENTRATION 1%</p>

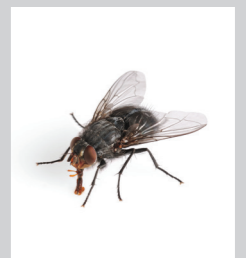
PROVECTA® as TANK MIX with REGISTERED PESTICIDE

<p>Provecta® acts synergistically, reinforces the effectiveness of insecticide solution and increases performance of the treatment. It ensures fast and even distribution of the insecticide on a treated surface. By reducing surface tension of the working solution, Provecta® allows an immediate encapsulation and immobilization of the insects in their hiding places.</p>	<p>CONCENTRATION 0,1% - 0,2% *depends on the level of the infestation</p>
---	---

EFFICACY STUDIES

AVERAGE PERCENT KNOCKDOWN, MORIBUND AND MORTALITY OF HOUSE FLY ADULTS AT DESIGNATED TIMES AFTER TREATMENT WITH PROVECTA®

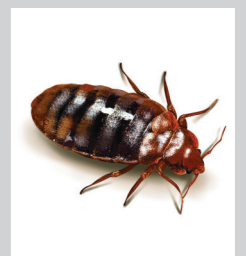
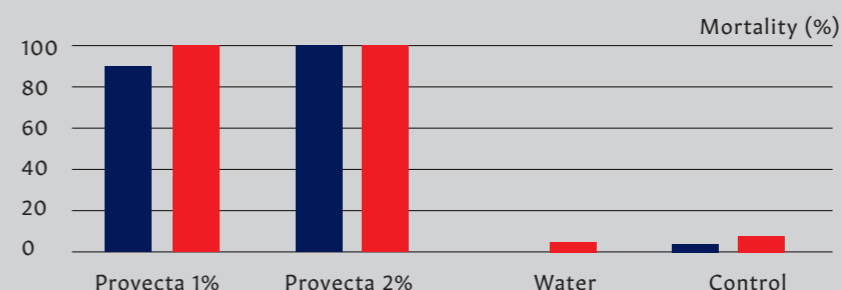
Test	1 hour		2 hours		4 hours		24 hours		48 hours	
	KD	M	KD	M	KD	M	KD	M	KD	M
Provecta 1%	95.9	0	95.9	0	2.0	0	0	100	0	100
Water Control	0	0	0	0	0	0	0	2.0	0	10.0



KD - Immobilization based knock-down effect

M - Mortality

EFFICACY OF PROVECTA AGAINST BED BUGS, *Cimex lectularius* (JERSEY CITY PYRETHROID RESIST ANT STRAIN) AS A DIRECT SPRAY (1 ML OF APPLICATION VOLUME)



■ 1 day
■ 7 days

FAQ

? DOES PROVECTA® CAUSE ANY STAINS ON SPRAYED SURFACES?

Working solution of PROVECTA® does not cause damage, stain or stickiness on the treated surface. The product's degradation deposit does not pose any threat to people or animals.

? WHAT IS THE EFFICACY AND THE MODE OF ACTION OF PROVECTA® WITH NO INSECTICIDE?

PROVECTA® in mixture with water causes the immediate external immobilization. The mode of action can be compared to a sprayable trap or spider's web.

? IS PROVECTA® EFFECTIVE AGAINST PESTS' EGGS?

PROVECTA® is effective against active developmental stages, i.e. larvae, nymphs and adults forms. It is recommended to repeat the treatment when new individuals hatch i.e. in case of bed bugs in 3-4 weeks after initial treatment.

? DOES PROVECTA® HAVE AN EFFECT ON THE PESTS THAT ENTER FRESHLY SPRAYED SURFACE?

PROVECTA® is effective only on the insects present in the range of application during the moment of treatment.

? CAN PROVECTA® BE APPLIED IN THE PRESENCE OF PEOPLE AND ANIMALS?

According to the toxicological data, PROVECTA® can be used in the presence of people and animals when used according to the label.

? IS IT RECOMMENDED TO REMOVE THE PLANTS FROM THE PLACE OF A TREATMENT DURING THE APPLICATION?

No, but it is recommended to avoid spraying the plants in order to prevent the possible phytotoxic reaction.

? CAN PROVECTA® BE APPLIED BY ULV DEVICES?

The spraying should be performed only by the use of LV (low volume) devices. Do not use the ULV sprayers. The recommended droplet size is: 80-120 µm (no smaller than 50 µm).

SPREADING EFFECT

ALL IN WEB TECHNOLOGY ENSURES EVEN DEPOSITION OF THE PRODUCT ON A TREATED SURFACE AND THE BODY OF THE PEST. THE PRODUCT ALSO PENETRATES CRACKS AND CREVICES WHERE PESTS MIGHT OCCUR, WHICH RESULTS IN THEIR EFFECTIVE ELIMINATION. PROVECTA® ACTS SYNERGISTICALLY AS ADJUVANT WHEN MIXED WITH INSECTICIDE AND ENSURES ITS FAST AND EVEN DISTRIBUTION ON A TREATED SURFACE.



- 1 Standard application of the liquid on a surface.
- 2 The spreading effect: the product based on ALL IN WEB technology penetrates crack and crevices where pests may occur.
- 3 The web structure entraps pests and immobilizes them thus preventing the pests from moving, feeding etc., which results in their effective elimination.
- 4 The product consists of the mixture of specific silicon polymers with cross-linked agents. It creates entirely permeable, polymeric net structure on the body of a pest in a process called polycondensation.

