



**Type of *Amyris heptaphylla* Roxb. [family  
RUTACEAE]**

<http://plants.jstor.org/specimen/bm000798405>

<http://www.jstor.org>

---

Your use of the JSTOR archive indicates your acceptance of JSTOR's Terms and Conditions of Use, available at <http://www.jstor.org/page/info/about/policies/terms.jsp>. JSTOR's Terms and Conditions of Use provides, in part, that unless you have obtained prior permission, you may not download an entire issue of a journal or multiple copies of articles, and you may use content in the JSTOR archive only for your personal, non-commercial use.

Please contact the contributing partner regarding any further use of this work. Partner contact information may be obtained at <http://plants.jstor.org/page/about/plants/PlantsProject.jsp>.

Each copy of any part of a JSTOR transmission must contain the same copyright notice that appears on the screen or printed page of such transmission.

---

JSTOR is a not-for-profit service that helps scholars, researchers, and students discover, use, and build upon a wide range of content in a trusted digital archive. We use information technology and tools to increase productivity and facilitate new forms of scholarship. For more information about JSTOR, please contact [plants@jstor.org](mailto:plants@jstor.org).

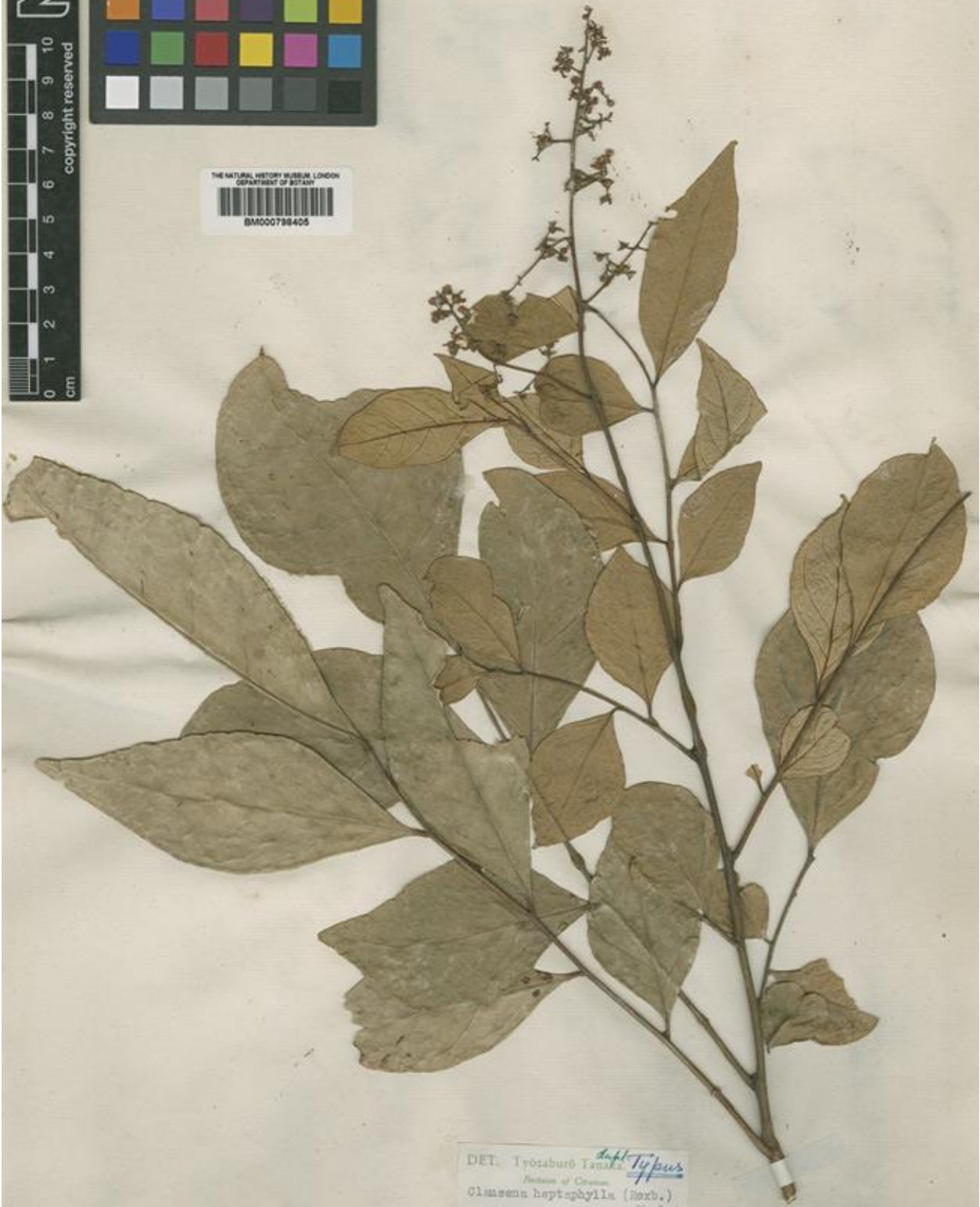
## Type of *Amyris heptaphylla* Roxb. [family RUTACEAE]

Herbarium

|                    |  |
|--------------------|--|
| Collection         | Type Specimens   |
| Resource Type      | Specimens  |
| Collector          | W. Roxburgh, #s.n.   |
| Locality           | Bengal Hort. [Calcutta botanic garden]   |
| Country            | India (India)  |
| Identifications    | Type of <i>Amyris heptaphylla</i> Roxb. [family RUTACEAE]; Isotype of <i>Clausena heptaphylla</i> (Roxb.) Wight & Arn. [family RUTACEAE] (stored under name); Verified by TyÅzaburÅ Tanaka, 1928 |
| Pages              | 1  |
| Data last modified | 2012-10-29   |

<http://plants.jstor.org/specimen/bm000798405>

Bengal hortoculta Roxburgh



DET. Tyoisaburo Tanaka <sup>det. Typus</sup>  
Herbarium of Ciomara  
*Claustrum heptaphyllum* (Roxb.)  
W. & A.  
1925  
No. 1054

*Amyris heptaphylla*, Herb. Fl. Ind. 2, p. 268  
*Claustrum*, Wright & Arn. Prodr. 1, p. 95  
*Amyris aristata* Hook. & Arn. 1854