



**Holotype of *Lampranthus brachyandrous* forma
L.Bolus [family MESEMBRYANTHEMACEAE]**

<http://www.aluka.org/action/showMetadata?doi=10.5555/AL.AP.SPECIMEN.BOL132933>

Use of the Aluka digital library is subject to Aluka's Terms and Conditions, available at <http://www.aluka.org/page/about/termsConditions.jsp>. By using Aluka, you agree that you have read and will abide by the Terms and Conditions. Among other things, the Terms and Conditions provide that the content in the Aluka digital library is only for personal, non-commercial use by authorized users of Aluka in connection with research, scholarship, and education.

The content in the Aluka digital library is subject to copyright, with the exception of certain governmental works and very old materials that may be in the public domain under applicable law. Permission must be sought from Aluka and/or the applicable copyright holder in connection with any duplication or distribution of these materials where required by applicable law.

Aluka is a not-for-profit initiative dedicated to creating and preserving a digital archive of materials about and from the developing world. For more information about Aluka, please see <http://www.aluka.org>

Holotype of *Lampranthus brachyandrous* forma *L.Bolus* [family MESEMBRYANTHEMACEAE]

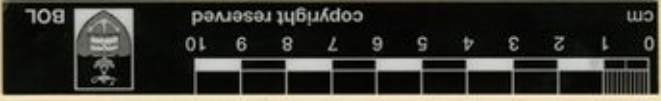
Collector	Holloway, H.M., No# 66
Collection date	Not on sheet
Locality	Windhoek Government Gardens.
Country	Namibia (Namibia)
Identifications	Holotype of <i>Lampranthus brachyandrous</i> forma <i>L.Bolus</i> [family MESEMBRYANTHEMACEAE]; <i>Lampranthus borealis</i> <i>L.Bolus</i> [family MESEMBRYANTHEMACEAE] (stored under name);
Repository	The Bolus Herbarium, Botany Department, University of Cape Town, South Africa, BOL132933
Data last modified	2005-11-09

<http://www.aluka.org/action/showMetadata?doi=10.5555/AL.AP.SPECIMEN.BOL132933>

BOLUS HERBARIUM



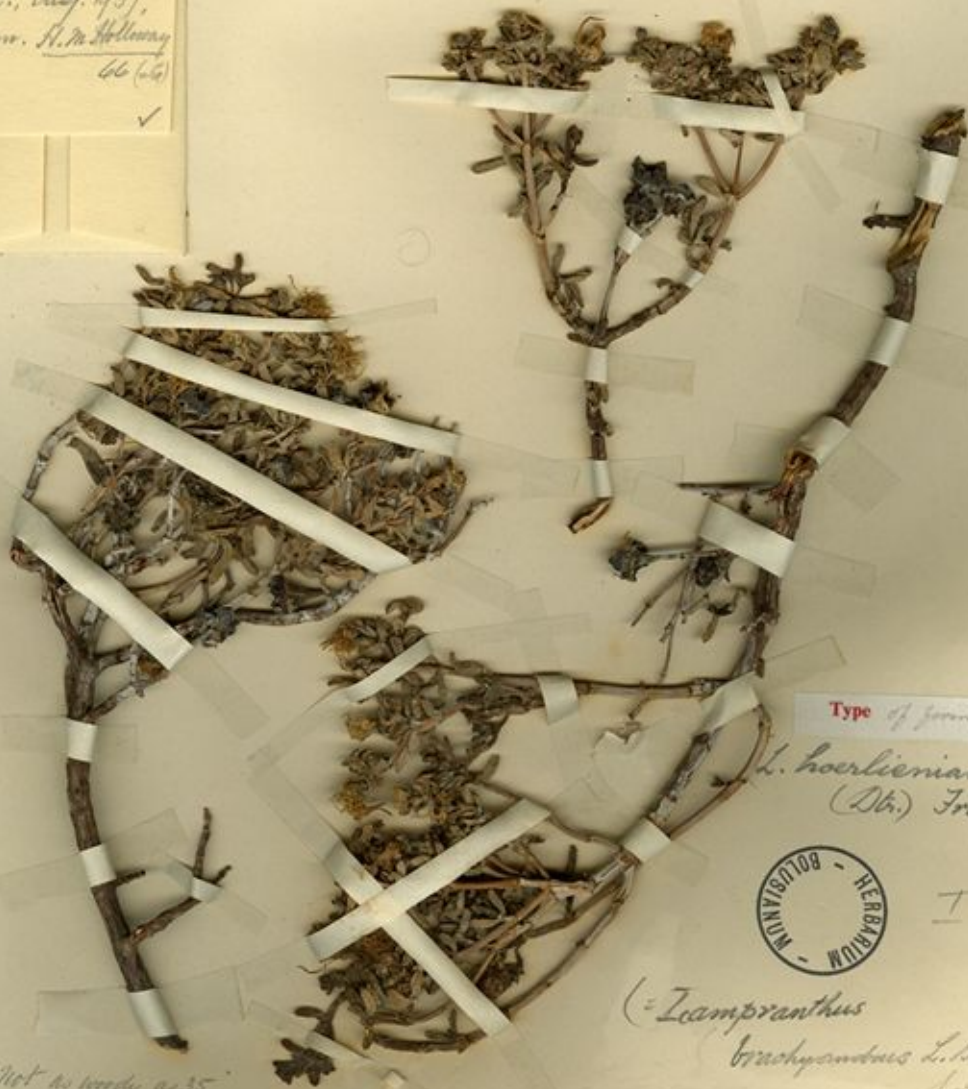
BOL132933



Miscob 21

Grot. Gardens, Windhoek
S.W.A., Aug. 1937,
Connr. H. M. Holloway
66 (66)

✓



Type of form.

L. hoerlianus
(Dl.) Friedl.



(= *Leampranthus*
brachyambus L. Bol.
forma)

Journ. S.A. Bot. 27: 58. (Jan. 1961)
Leampranthus borealis L. Bol.

"Not as woody as 35"
H. M. Holloway

Inkabi