



**Filed as *Lepidobotrys staudtii* Engl. [family
LEPIDOBOTRYACEAE]**

<http://plants.jstor.org/specimen/br0000006729080>

<http://www.jstor.org>

Your use of the JSTOR archive indicates your acceptance of JSTOR's Terms and Conditions of Use, available at <http://www.jstor.org/page/info/about/policies/terms.jsp>. JSTOR's Terms and Conditions of Use provides, in part, that unless you have obtained prior permission, you may not download an entire issue of a journal or multiple copies of articles, and you may use content in the JSTOR archive only for your personal, non-commercial use.

Please contact the contributing partner regarding any further use of this work. Partner contact information may be obtained at <http://plants.jstor.org/page/about/plants/PlantsProject.jsp>.

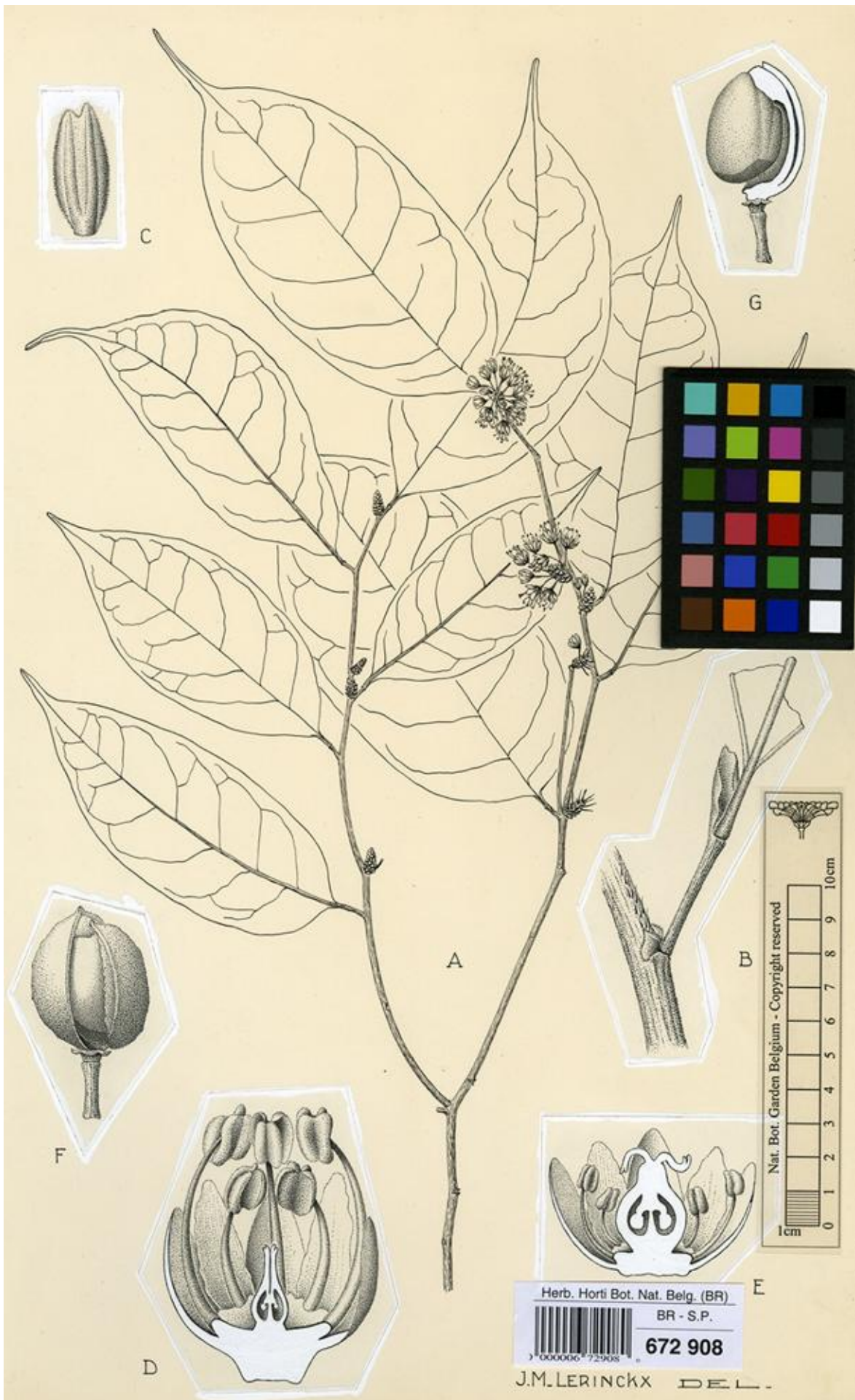
Each copy of any part of a JSTOR transmission must contain the same copyright notice that appears on the screen or printed page of such transmission.

JSTOR is a not-for-profit service that helps scholars, researchers, and students discover, use, and build upon a wide range of content in a trusted digital archive. We use information technology and tools to increase productivity and facilitate new forms of scholarship. For more information about JSTOR, please contact plants@jstor.org.

Filed as *Lepidobotrys staudtii* Engl. [family LEPIDOBOTRYACEAE]

Herbarium	National Botanic Garden of Belgium (BR), BR0000006729080
Collection	Type Specimens
Resource Type	Specimens
Collection date	Not on sheet
Country	Unknown
Identifications	<i>Lepidobotrys staudtii</i> Engl. [family LEPIDOBOTRYACEAE] (stored under name);
Notes	The specimen is a drawing; The artist of the image was J.M. Lerinckx
Data last modified	2008-09-18

<http://plants.jstor.org/specimen/br0000006729080>



M.C. VIII

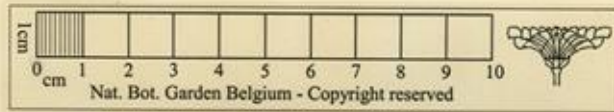
Léonard

Lepidobotrys Staudtii Engl.

{ Léonard 1480 (alcool)
Vermeeren 353
Germain 5377 (alcool)

- A - Extrémité rameau florifère x $\frac{1}{2}$ - (Léonard 1480)
- B - Très jeune ramille, avec 2 stipules, pétiole articulé, 1 Stipule, pétiole articulé base du limbe x 4 - (Léonard 1480)
- C - Stipule, face dorsale x 5 - (")
- D - Fleur mâle, coupe longitudinale x 5 - (Léonard 1480)
- E - " femelle. " " x 5 - (Vermeeren 353)
- F - Capsule déhiscente x 1 - (Germain 5377)
- G - Graine x 1 - (Germain 5377)

FAC, Vol III - 59 (1958)



VII 59
VIII