



**Filed as *Pycnanthus marchalianus* Ghesq. [family MYRISTICACEAE]**

<http://plants.jstor.org/specimen/br0000006868963>

<http://www.jstor.org>

---

Your use of the JSTOR archive indicates your acceptance of JSTOR's Terms and Conditions of Use, available at <http://www.jstor.org/page/info/about/policies/terms.jsp>. JSTOR's Terms and Conditions of Use provides, in part, that unless you have obtained prior permission, you may not download an entire issue of a journal or multiple copies of articles, and you may use content in the JSTOR archive only for your personal, non-commercial use.

Please contact the contributing partner regarding any further use of this work. Partner contact information may be obtained at <http://plants.jstor.org/page/about/plants/PlantsProject.jsp>.

Each copy of any part of a JSTOR transmission must contain the same copyright notice that appears on the screen or printed page of such transmission.

---

JSTOR is a not-for-profit service that helps scholars, researchers, and students discover, use, and build upon a wide range of content in a trusted digital archive. We use information technology and tools to increase productivity and facilitate new forms of scholarship. For more information about JSTOR, please contact [plants@jstor.org](mailto:plants@jstor.org).

## Filed as *Pycnanthus marchalianus* Ghesq. [family MYRISTICACEAE]

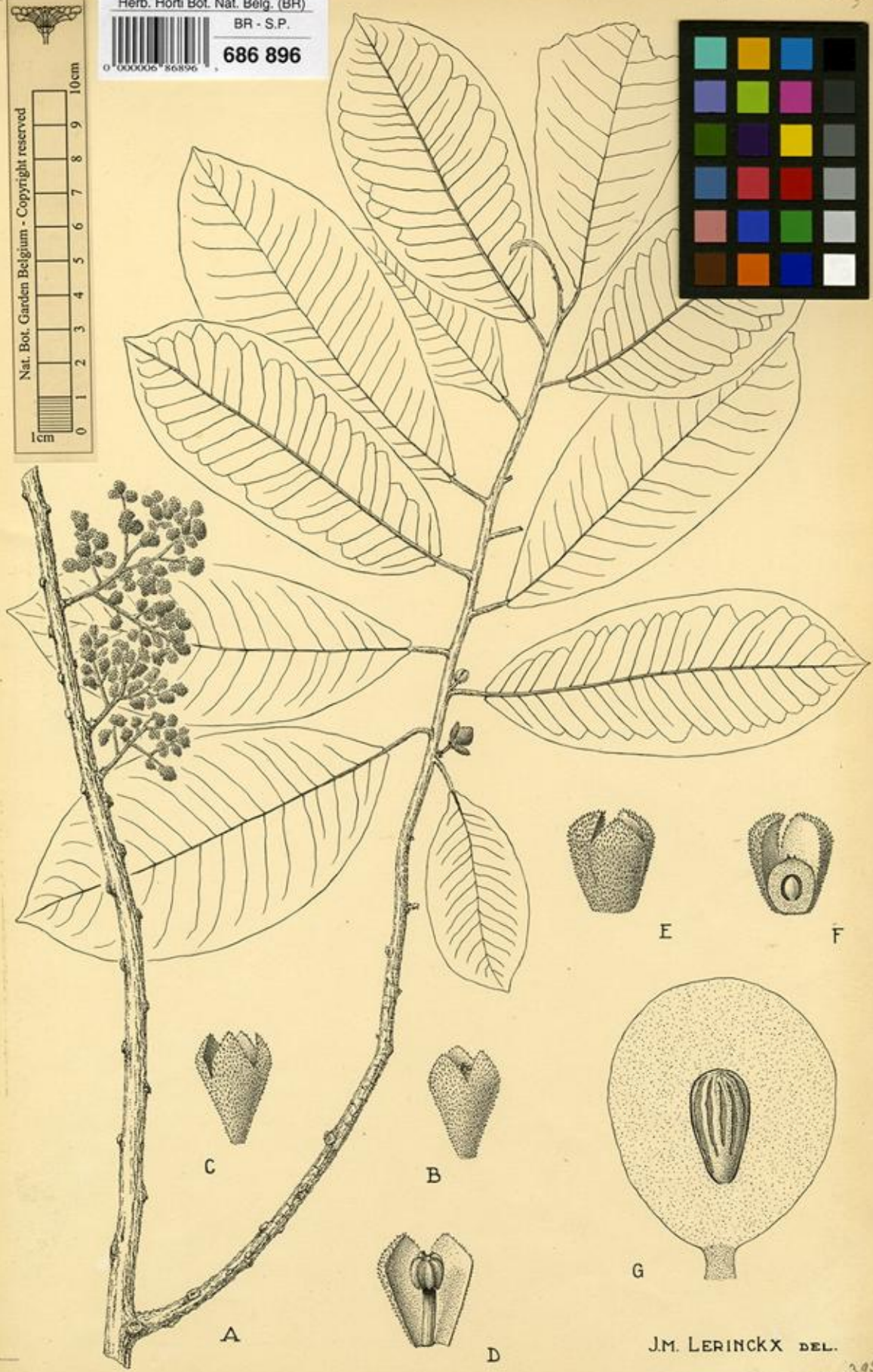
Herbarium

Collection	Type Specimens
Resource Type	Specimens
Collection date	
Country	Unknown
Identifications	<i>Pycnanthus marchalianus</i> Ghesq. [family MYRISTICACEAE] (stored under name);
Notes	The specimen is a drawing; The artist of the image was J.M. Lerinckx
Pages	2
Data last modified	2008-10-29

<http://plants.jstor.org/specimen/br0000006868963>

686 896 2

Herb. Horti Bot. Nat. Belg. (BR)  
BR - S.P.  
686 896



J.M. LERINCKX DEL.

*Myrica*

II, 395  
XXXVIII

BR-SP686 896<sub>3</sub>

VII II 4

*Pycnanthus Marchalianus* Ghesq.

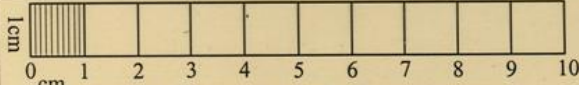
Louis 12086  
Gilbert 5333

- A - Port - fleur mâle x 1/2 (L. 12086)
- B - Fleur mâle x 10 (L. 12086)
- C - " " " " x 10 (L. 12086)
- D - " " " coupe longitudinale x 10 (L. 12086)
- E - Fleur femelle x 10 (G. 5333)
- F - " " " coupe longitudinale x 10 (G. 5333)
- G - Fruit coupe longitudinale x 1/2 (G. 5333)



FAC II, 395 (1951)

Herb. Horti Bot. Nat. Belg. (BR)  
BR - S.P.  
  
0 000006 86896  
**686 896**

  
1cm  
0 cm 1 2 3 4 5 6 7 8 9 10  
Nat. Bot. Garden Belgium - Copyright reserved  
