



**Holotype of *Grevillea althoferorum* Olde & Marriott
subsp. *fragilis* Olde & Marriott [family
PROTEACEAE]**

<http://plants.jstor.org/specimen/perth07692439>

<http://plants.jstor.org/>

Your use of the JSTOR archive indicates your acceptance of JSTOR's Terms and Conditions of Use, available at <http://www.jstor.org/page/info/about/policies/terms.jsp>. JSTOR's Terms and Conditions of Use provides, in part, that unless you have obtained prior permission, you may not download an entire issue of a journal or multiple copies of articles, and you may use content in the JSTOR archive only for your personal, non-commercial use.

Please contact the contributing partner regarding any further use of this work. Partner contact information may be obtained at <http://plants.jstor.org/action/community?page=partners>.

Each copy of any part of a JSTOR transmission must contain the same copyright notice that appears on the screen or printed page of such transmission.

JSTOR is a not-for-profit service that helps scholars, researchers, and students discover, use, and build upon a wide range of content in a trusted digital archive. We use information technology and tools to increase productivity and facilitate new forms of scholarship. For more information about JSTOR, please contact plants@jstor.org.

Holotype of *Grevillea althoferorum* Olde & Marriott subsp. *fragilis* Olde & Marriott [family PROTEACEAE]

Herbarium

Collection	Herbarium Specimens
Resource Type	Specimens
Collector	P.M. Olde & N.R. Marriott, #PMO 02/84
Collection date	2002/9/6
Locality	Nature Reserve at end of Morrissey Road (off Great Northern Highway) Bullsbrook, 1 km from Highway, eastern side of fire trail, walk in ca 1 km till you see a farmers shed. Plants are opposite this
Country	Australia (Australia)
Identifications	Holotype of <i>Grevillea althoferorum</i> Olde & Marriott subsp. <i>fragilis</i> Olde & Marriott [family PROTEACEAE] (stored under name); Verified by P.M. Olde & N.R. Marriott, 2008 (Cited by P.M. Olde & N.R. Marriott in <i>Nuytsia</i> 18:230(2008)) <i>Grevillea althoferorum</i> Olde & Marriott subsp. <i>fragilis</i> Olde & Marriott [family PROTEACEAE];
Notes	Bluish-green, lignotuberous shrub with non-pungent leaves. 0.3 m x 0.4-1 m. Yellow with reddish to reddish-brown buds. Undulating plain. Outwash plain of the Darling Range. Grey sand over yellow sand. Banksia-Corymbia woodland with <i>Corymbia calophylla</i> , <i>Banksia menziesii</i> , <i>B. attenuata</i> , <i>B. grandis</i> , <i>Adenanthos</i> sp., <i>Hibbertia</i> sp., <i>Ptilotus manglesii</i> , <i>Xanthorrhoea</i> sp., <i>Mesomelaena tetragona</i> , <i>Stirlingia latifolia</i> , <i>Lobelia</i> sp., <i>Isopogon</i> , <i>Petrophile</i> spp. rare (10-50 plants seen). Third year of drought. Very little in flower. Threatened flora.
Pages	1
Data last modified	2014-06-26

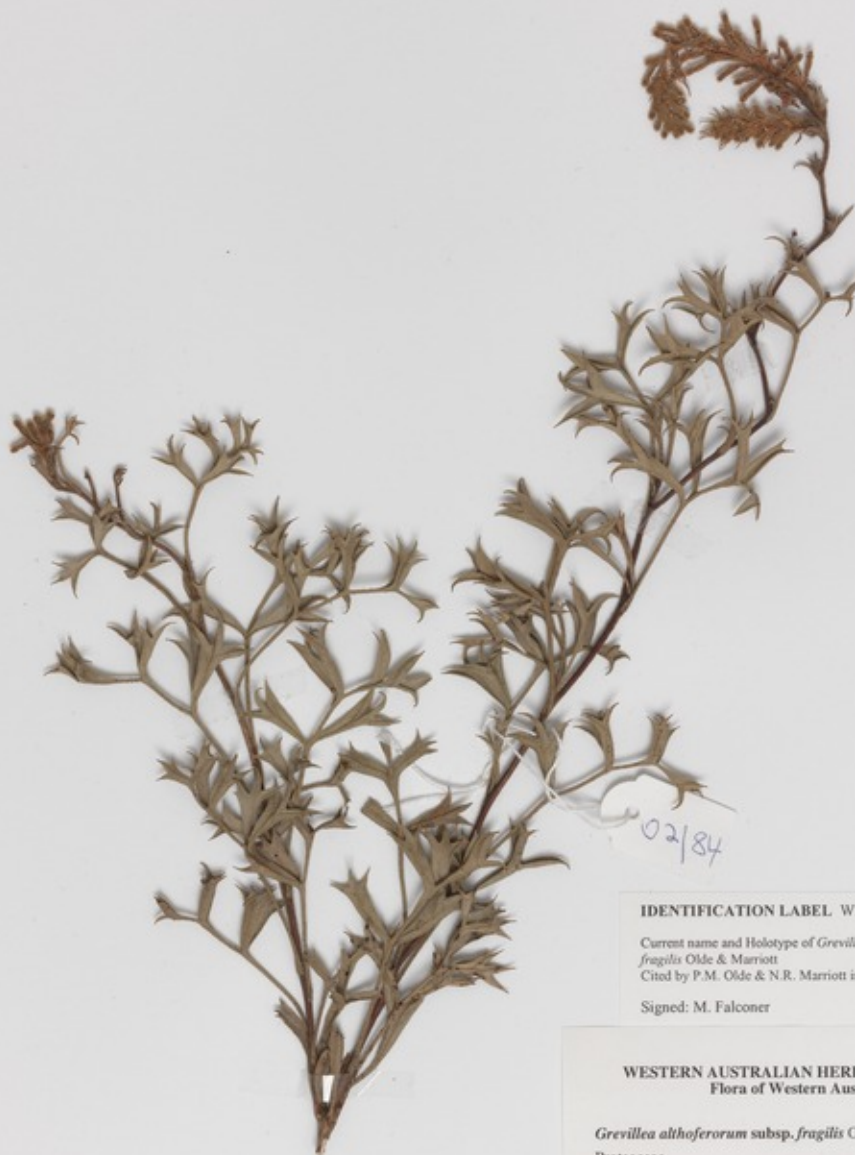
<http://plants.jstor.org/specimen/perth07692439>

TYPE COLLECTION PERTH

Western Australian Herbarium



PERTH 07692439



IDENTIFICATION LABEL W.A. Herbarium (PERTH)

Current name and Holotype of *Grevillea althoferorum* subsp. *fragilis* Olde & Marriott
Cited by P.M. Olde & N.R. Marriott in *Nuytsia* 18: 230(2008)

Signed: M. Falconer

29 October 2008

WESTERN AUSTRALIAN HERBARIUM, PERTH
Flora of Western Australia

Grevillea althoferorum subsp. *fragilis* Olde & Marriott

Proteaceae

Bluish-green, lignotuberous shrub with non-pungent leaves. 0.3 m x 0.4–1 m. Yellow with reddish to reddish-brown buds. Undulating plain. Outwash plain of the Darling Range. Grey sand over yellow sand. Banksia-Corymbia woodland with *Corymbia calophylla*, *Banksia menziesii*, *B. attenuata*, *B. grandis*, *Adenanthos* sp., *Hibbertia* sp., *Ptilotus manglesii*, *Xanthorrhoea* sp., *Mesomelaena tetragona*, *Stirlingia latifolia*, *Lobelia* sp., *Isopogon*, *Petrophile* spp.

Frequency: rare (10–50 plants seen). Third year of drought. Very little in flower.

Loc.: Nature Reserve at end of Morrissey Road (off Great Northern Highway) Bullsbrook, 1 km from Highway, eastern side of fire trail, walk in ca 1 km till you see a farmers shed. Plants are opposite this WA

Lat. 31°37'30.000"S Long. 116°1'26.000"E GDA94

Coll. P.M. Olde & N.R. Marriott PMO 02/84 Date: 06/09/2002

Dups. to MEL
PERTH 07692439

