

INSECTA MUNDI

A Journal of World Insect Systematics

0280

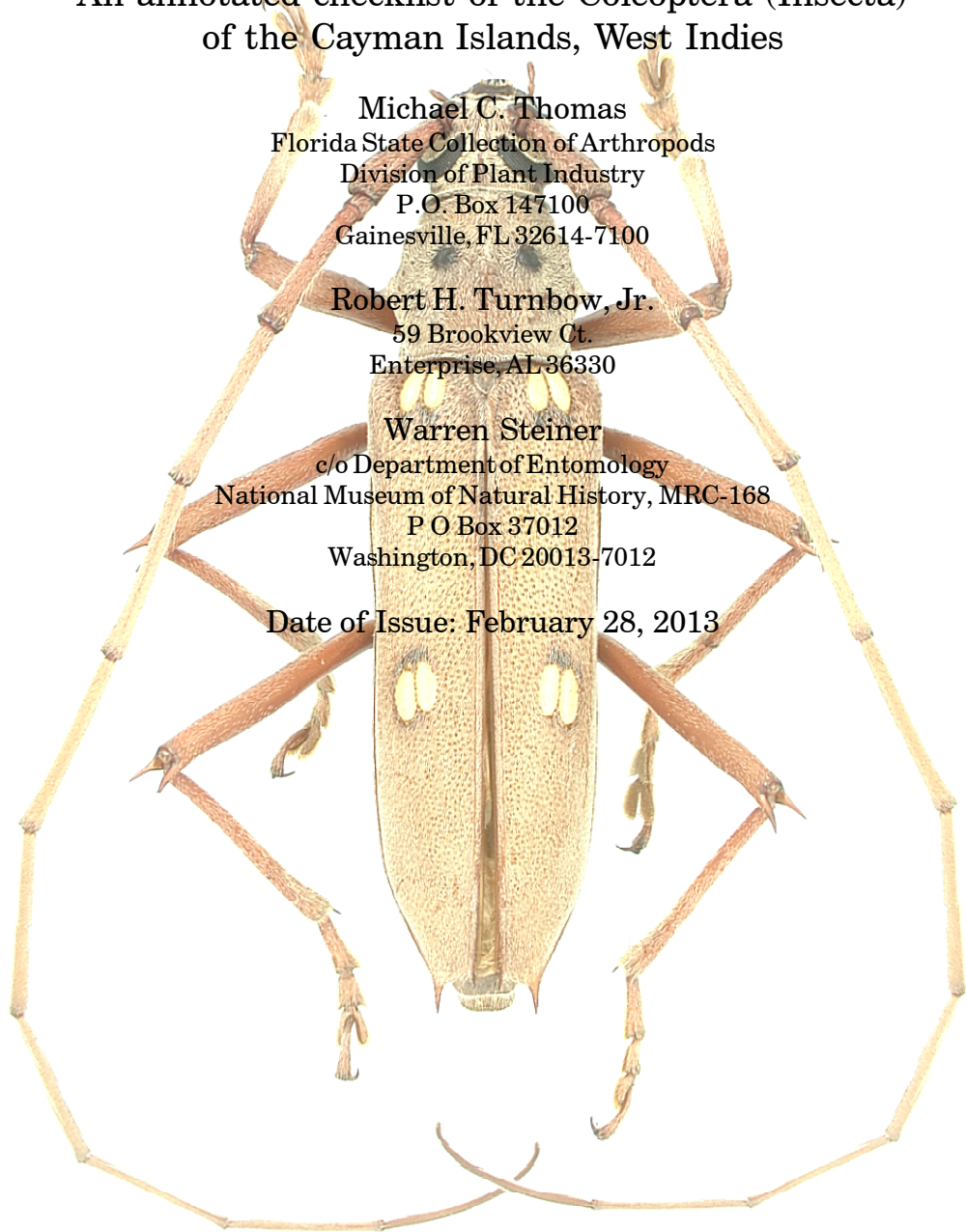
An annotated checklist of the Coleoptera (Insecta)
of the Cayman Islands, West Indies

Michael C. Thomas
Florida State Collection of Arthropods
Division of Plant Industry
P.O. Box 147100
Gainesville, FL 32614-7100

Robert H. Turnbow, Jr.
59 Brookview Ct.
Enterprise, AL 36330

Warren Steiner
c/o Department of Entomology
National Museum of Natural History, MRC-168
P O Box 37012
Washington, DC 20013-7012

Date of Issue: February 28, 2013



Michael C. Thomas, Robert H. Turnbow, Jr., and Warren Steiner
An annotated checklist of the Coleoptera (Insecta) of the Cayman Islands, West Indies
Insecta Mundi 0280: 1-56

ZooBankRegistered: urn:lsid:zoobank.org:pub:64BF4BBE-05A9-4B7C-9F36-0D79A7D64169

Published in 2013 by

Center for Systematic Entomology, Inc.
P. O. Box 141874
Gainesville, FL 32614-1874 USA
<http://www.centerforsystematicentomology.org/>

Insecta Mundi is a journal primarily devoted to insect systematics, but articles can be published on any non-marine arthropod. Topics considered for publication include systematics, taxonomy, nomenclature, checklists, faunal works, and natural history. **Insecta Mundi** will not consider works in the applied sciences (i.e. medical entomology, pest control research, etc.), and no longer publishes book reviews or editorials. **Insecta Mundi** publishes original research or discoveries in an inexpensive and timely manner, distributing them free via open access on the internet on the date of publication.

Insecta Mundi is referenced or abstracted by several sources including the Zoological Record, CAB Abstracts, etc. **Insecta Mundi** is published irregularly throughout the year, with completed manuscripts assigned an individual number. Manuscripts must be peer reviewed prior to submission, after which they are reviewed by the editorial board to ensure quality. One author of each submitted manuscript must be a current member of the Center for Systematic Entomology. Manuscript preparation guidelines are available at the CSE website.

Managing editor: Paul E. Skelley, e-mail: insectamundi@gmail.com

Production editor: Michael C. Thomas, Brian Armitage, Ian Stocks

Editorial board: J. H. Frank, M. J. Paulsen

Subject editors: G.B. Edwards, J. Eger, A. Rasmussen, F. Shockley, G. Steck, Ian Stocks, A. Van Pelt, J. Zaspel

Spanish editors: Julieta Brambila, Angélico Asenjo

Printed copies (ISSN 0749-6737) annually deposited in libraries:

CSIRO, Canberra, ACT, Australia
Museu de Zoologia, São Paulo, Brazil
Agriculture and Agrifood Canada, Ottawa, ON, Canada
The Natural History Museum, London, Great Britain
Muzeum i Instytut Zoologiczny PAN, Warsaw, Poland
National Taiwan University, Taipei, Taiwan
California Academy of Sciences, San Francisco, CA, USA
Florida Department of Agriculture and Consumer Services, Gainesville, FL, USA
Field Museum of Natural History, Chicago, IL, USA
National Museum of Natural History, Smithsonian Institution, Washington, DC, USA
Zoological Institute of Russian Academy of Sciences, Saint-Petersburg, Russia

Electronic copies (On-Line ISSN 1942-1354, CDROM ISSN 1942-1362) in PDF format:

Printed CD or DVD mailed to all members at end of year. Archived digitally by Portico.
Florida Virtual Campus: <http://purl.fcla.edu/fcla/insectamundi>
University of Nebraska-Lincoln, Digital Commons: <http://digitalcommons.unl.edu/insectamundi/>
Goethe-Universität, Frankfurt am Main: <http://edocs.ub.uni-frankfurt.de/volltexte/2010/14363/>

Author instructions available on the Insecta Mundi page at:

<http://www.centerforsystematicentomology.org/insectamundi/>

Copyright held by the author(s). This is an open access article distributed under the terms of the Creative Commons, Attribution Non-Commercial License, which permits unrestricted non-commercial use, distribution, and reproduction in any medium, provided the original author(s) and source are credited. <http://creativecommons.org/licenses/by-nc/3.0/>

An annotated checklist of the Coleoptera (Insecta) of the Cayman Islands, West Indies

Michael C. Thomas
Florida State Collection of Arthropods
Division of Plant Industry
P.O. Box 147100
Gainesville, FL 32614-7100
michael.thomas@freshfromflorida.com

Robert H. Turnbow, Jr.
59 Brookview Ct.
Enterprise, AL 36330
robert.turnbow@us.army.mil

Warren Steiner
c/o Department of Entomology
National Museum of Natural History, MRC-168
P O Box 37012
Washington, DC 20013-7012
steinerw@si.edu

Abstract. A faunal list of 605 species of Coleoptera in 396 genera in 63 families is presented for the Cayman Islands. For most species, island and locality within island collecting information is provided.

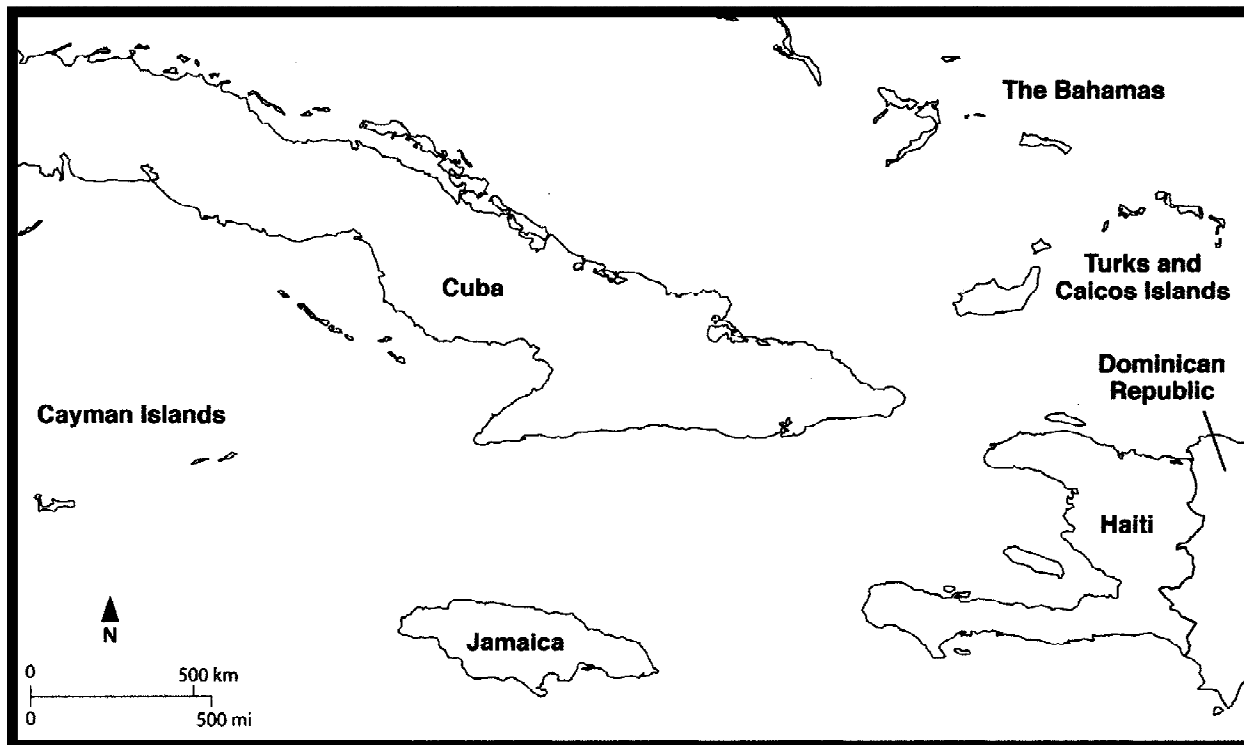
Dedication

This publication is dedicated to Dr. Eugene J. Gene Gerberg (1919-2012), a former resident of the Cayman Islands whose idea this project was, whose small collection formed the nucleus of this study, and whose gentle but persistent nudging kept us on track.

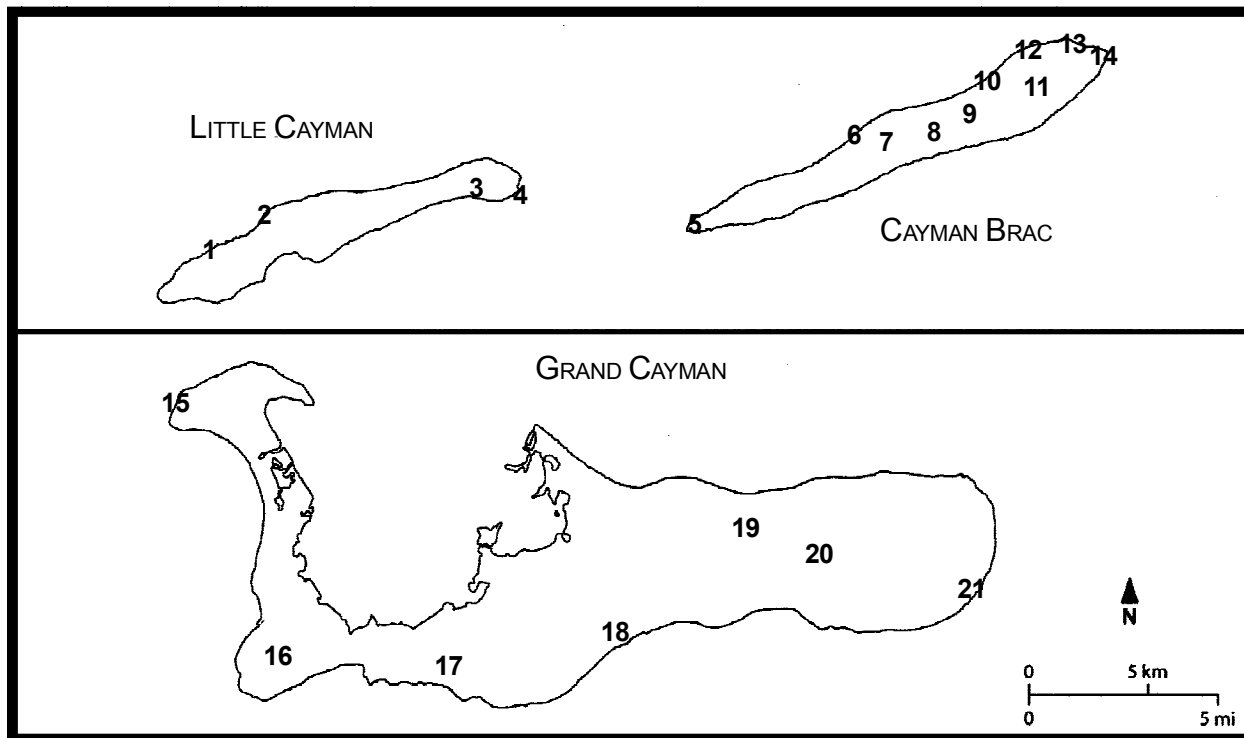
Introduction

The Caribbean Islands are generally considered to comprise one of the world's great hotspots of biological diversity (see Peck 2006 and references therein). However, any discussion of biodiversity requires, at minimum, data on the number of species present. Those data frequently are lacking for many invertebrate taxa in the Caribbean. The large, high islands of the Greater Antilles and the volcanic Islands of the Lesser Antilles have received attention from coleopterists in recent years (e.g., Ivie, et al. 2008; Peck 2005, Peck 2006, Peck 2009a, Peck 2009b, Peck 2009c, Peck 2010, Peck 2011a 2011b, Peck and Perez-Gelabert 2012; Perez-Gelabert 2008; Woodruff et al. 1998). Except for the recent checklist of Bahamian beetles (Turnbow and Thomas 2008), the lower, drier islands of the western Caribbean have not received such attention. The present publication on the beetle fauna of the Cayman Islands is a continuation of attempts to remedy this lack of information and to present a starting point for further studies of the fauna.

The Cayman Islands are a British Overseas Territory composed of three small oceanic islands -- Grand Cayman, Cayman Brac, and Little Cayman -- in the western Caribbean (Map 1). Grand Cayman is by far the largest, with an area of 197 km². Cayman Brac and Little Cayman are located about 130 km east of Grand Cayman and have areas of 36 km² and 25.9 km² respectively. The two islands are only 7.5 km apart. The Caymans are situated on the Cayman Ridge, a westward extension of the Sierra Maestra of Cuba. They are bordered on the south by the up-to-6000m deep Cayman Trench and to the north by the Guacanayabo Trough which reaches depths of about 3000m.



Map 1. Location of the Cayman Islands (map reprinted with permission from Ratcliffe and Cave 2010).



Map 2. Significant collecting localities in the Cayman Islands. Localities listed in Table 1 (map modified with permission from Ratcliffe and Cave 2010).

Table 1. Cayman Island collecting localities.**Little Cayman**

1. Spot Bay
2. North Coast Road at Olivine Kirk Rd.
3. Coot Marsh
4. Sandy Point

Cayman Brac

5. West End
6. Stake Bay
7. Hemmington Rd. at Songbird Lane
8. Maj. Donald Rd. at Ashton Reid Dr.
9. Brac Parrot Reserve
10. Creek
11. Brac Paradise Subdivision
12. Spot Bay
13. Long Beach
14. Lighthouse Point

Grand Cayman

15. Boatswain Point
16. Georgetown, University College, Cayman Islands (UCCI)
17. Governor Gore's Pond
18. Bodden Town
19. Mastic Trail
20. Queen Elizabeth II Botanic Park
21. Gun Bay

The Cayman Islands are among the most isolated islands in the West Indies, with Cayman Brac lying 196 km from mainland Cuba and 208 km from Jamaica. Grand Cayman is 352km from Jamaica and 339 km from the nearest point of mainland Cuba; it is 271 km from Isla de la Juventud (Isle of Pines). The isolation and age of the Caymans, having been above sea level since the late Miocene (Jones 1994), contribute to their biological interest.

Habitats

Ratcliffe and Cave (2010) briefly describe the Cayman habitat and Brunt (1994) does so in detail. Dry evergreen woodland and thicket predominate in upland areas, especially in eastern Grand Cayman and on the bluff of Cayman Brac. Seasonal swamps occur in lower areas and mangrove forests predominate in some coastal areas. See Figures 1-7 for illustrations of some of the habitat types and Map 2 for collecting localities.

Previous studies

The Cayman Islands have been the subject of two previous biological surveys. The first, the Oxford University Biological Expedition, lasted five months -- April - August -- in 1938 and covered all three islands, although the focus of the survey was on Grand Cayman (Askew 1994). The material collected by that expedition formed the basis for several papers on the Coleoptera (Blackwelder 1947, Darlington 1947, Fisher 1941, Fisher 1948, Sanderson 1939). The second survey, July-August 1975, by the Royal Society and the Government of the Cayman Islands, concentrated mostly on Little Cayman (Askew 1980). The entomological results were reported by Askew (1980). Neither survey resulted in a species list of the beetle fauna of the islands, although Askew (1980) counted 118 species in 36 families from Little Cayman.

The present paper is the result of two collecting trips by the first two authors (June 2-8, 2008, Grand Cayman and Cayman Brac, and May 19-29, 2009, Grand Cayman, Cayman Brac, and Little Cayman), one trip by the third author to Grand Cayman (February 16-25, 1993), with focus on Tenebrionidae and aquatic taxa, plus an extensive literature survey to include previously pub-



Figure 1. Byrd Dozier collecting along track through dry evergreen thicket on east end of Grand Cayman.



Figure 2. Recently burned gumbo-limbo trees (*Bursera simaruba* (L.) Sarg.) near south trailhead of Mastic Trail, Grand Cayman.



Figure 3. Dry evergreen woodland along North Coast Road, Little Cayman.



Figure 4. View of the Bluff on Cayman Brac looking North from South Side Road.



Figure 5. George Ball collecting in Coot Marsh, Little Cayman.



Figure 6. Light trap placed at edge of trail through natural area of Queen Elizabeth II Botanic Park, Grand Cayman.

lished records. With the exception of aquatic beetles studied by Paul Spangler (USNM), the material collected in the 1938 and 1975 surveys was not examined. A local collection maintained by the Cayman Islands Department of Environment was destroyed in 2004 during the flooding from Hurricane Ivan (M. Cottam, in litt.).

Faunal Affinities and Endemism

Askew (1994) concluded that the Cayman Islands butterfly fauna primarily derived from two sources, Cuba and Jamaica, with Cuba being by far the more important source; he also showed that the Carabidae (Darlington 1947) and Staphylinidae (Blackwelder 1947), supported the same conclusion. Baranowski and Slater (1998) did not disagree but stated that so many of the lygaeids found in the Caymans are so widely distributed in the Caribbean that pinpointing a colonization source would be almost impossible.

The percentage of endemism of the Cayman Island fauna varies widely depending on the taxon. For example, amongst the 46 species of butterflies, the only endemics are at the subspecies level (Askew 1994). A recent study of the Lygaeidae (Hemiptera) revealed 5 endemic species, or 10% of 50 species recorded from the islands (Baranowski and Slater 1998).

Because of numerous specimens not nameable to species or still undescribed and the lack of data for other islands, it is premature to speculate on the total proportion of endemics in the Cayman beetle fauna. However, it appears that the proportion of endemism for the Coleoptera as a whole is probably higher than for the few other studied groups of terrestrial invertebrates. Of the Cerambycidae reported here, 41% (16 of 39 species) are endemic to the Cayman Islands (the one described variety of *Eburia caymanensis* Fisher is not counted, nor is the unidentified prionine). Of the 21 species of Scarabaeidae recorded here, 6 (28%) are endemic, including the recently described monotypic endemic genus *Caymania* (Ratcliffe and Cave 2010). The scarab count includes what appears to be an undescribed species of *Phyllophaga* from Cayman Brac but not an unidentified *Phyllophaga* represented by a single specimen from Grand Cayman which may very well be exotic. All five species of Anthribidae collected in the Caymans are undescribed and probably endemic (B. Valentine, in litt.).

Because of the nature of our collecting efforts, few widely distributed stored products species, such as *Oryzaephilus* spp. (Silvanidae), were encountered, although several cosmopolitan species of *Cryptolestes* apparently occur in the wild and were collected. Other exotic species, notably in the Bostrichidae (e.g., the African *Apate monachus* Fabricius and the Asian *Heterobostrychus aequalis* (Waterhouse)), are established in the islands. The Central American chrysomelid *Cryptocephalus irroratus* Suffrian, which recently became established in Florida (Riley and Gilbert 2000), was common near George Town on Grand Cayman.

The families best represented in the Cayman Islands are: Carabidae, with 78 species; Staphylinidae, 60 species; Curculionidae, 58 species; Tenebrionidae, 52 species; Cerambycidae, 41 species, and Chrysomelidae, 34 species.



Figure 7. Burned woodland on the Bluff on Cayman Brac, showing the jagged karst surface that predominates on the Bluff.



Figures 8-11. Cayman Islands beetles. **8)** *Apenes delicata cayman* (Carabidae). **9)** *Colliuris caymansensis* (Carabidae). **10)** *Calleida caymanensis* (Carabidae). **11)** *Galerita lecontei tenebricosa* (Carabidae).



12



13

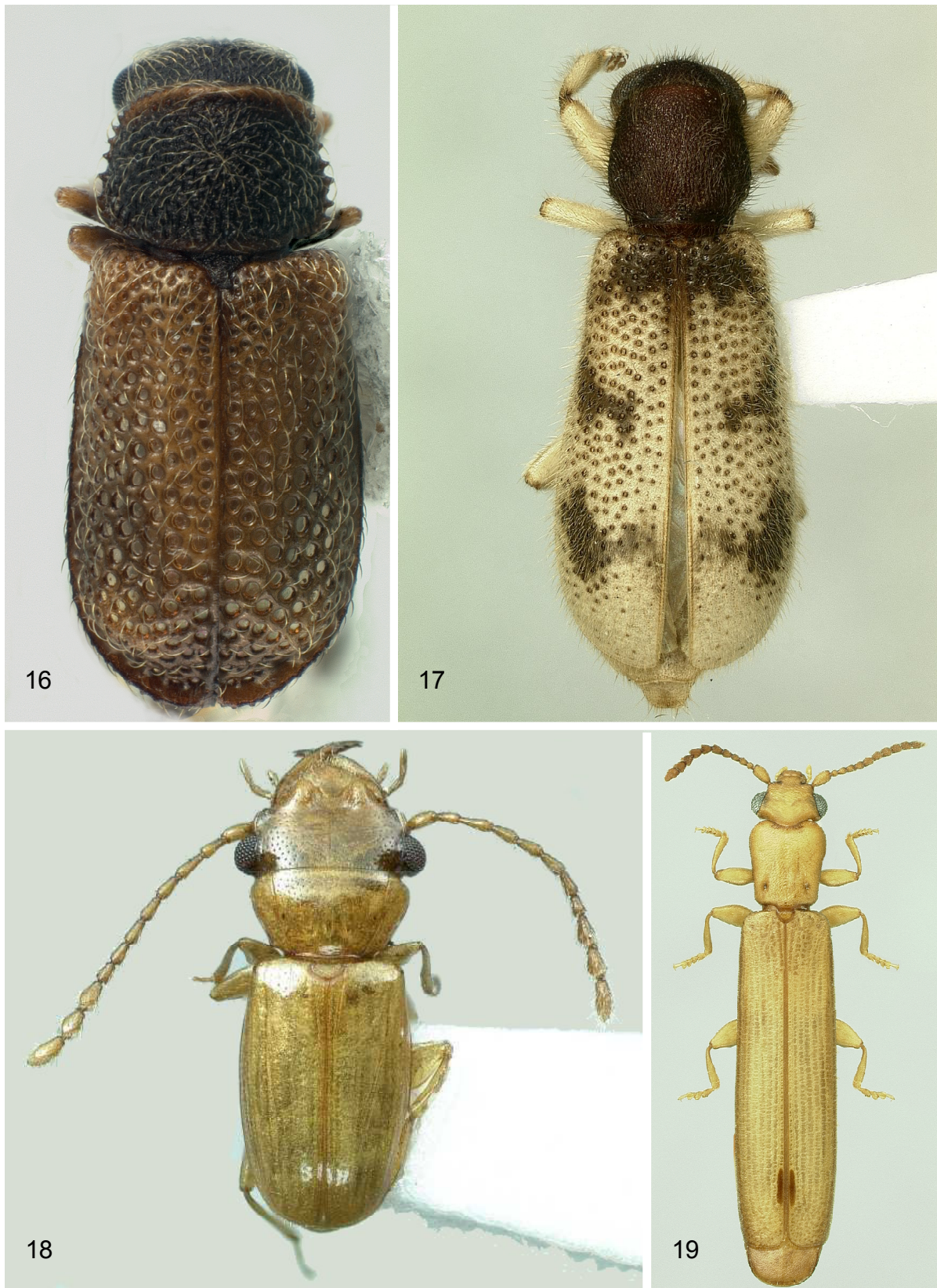


14

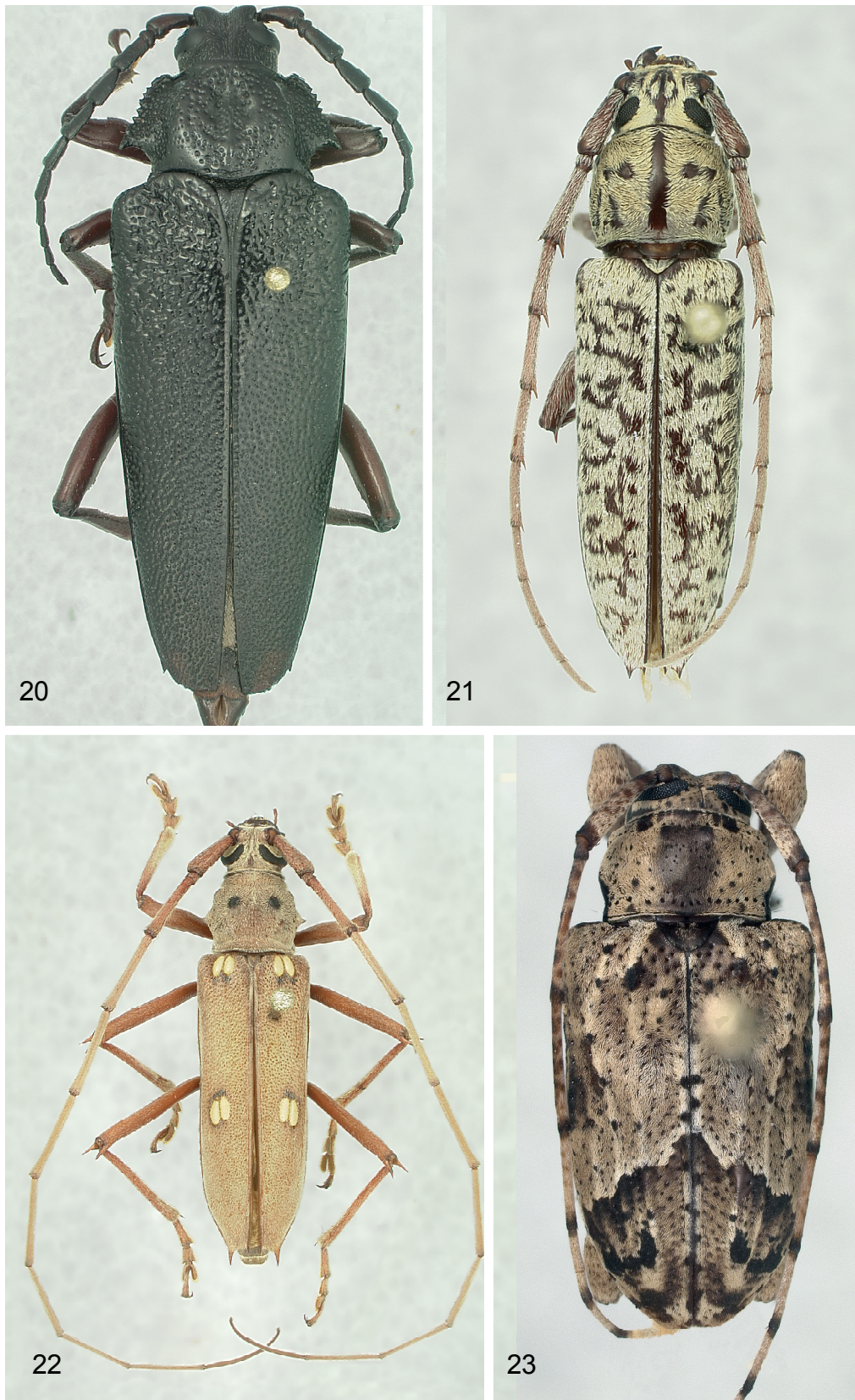


15

Figures 12-15. Cayman Islands beetles. **12)** *Lebia bitaeniata* (Carabidae). **13)** *Apalonychus waterhousei* (Hybosoridae). **14)** *Gymnetis lanius* (Scarabaeidae). **15)** *Phyllophaga caymanensis* (Scarabaeidae).



Figures 16-19. Cayman Islands beetles. **16)** *Melyrodes floridana* (Melyridae). **17)** *Pelonium* sp. A (Cleridae). **18)** *Charaphloeus bituberculatus* (Laemophloeidae). **19)** *Hemipeplus marginipennis* (Mycteridae).



Figures 20-23. Cayman Islands beetles. **20)** *Elateropsis nigricornis* (Cerambycidae). **21)** *Elaphidion thompsoni* (Cerambycidae). **22)** *Eburia lewisi* (Cerambycidae). **23)** *Leptostylus dealbatus* (Cerambycidae).



Figures 24-25. Cayman Islands beetles. 24) *Psapharochrus circumflexus* (Cerambycidae). 25) *Lagocheirus araneiformis* (Cerambycidae).

For comparison with three recent West Indian island surveys, Ivie et al. (2008) reported that “...several person-years of collecting, and trap-years of passive collecting” on Montserrat, which has a land area of 104 km², produced 718 species of Coleoptera; tiny Guana Island in the British Virgin Islands, with a land area of only 0.30 km², had 405 beetle species (Valentine and Ivie 2005); while Turnbow and Thomas (2008) recorded 996 species from the 13,939 km² of the Bahamas.

Collection codens: BYUC (Brigham Young University, Provo), FSCA (Florida State Collection of Arthropods, Gainesville), IJC (Institute of Jamaica Collection, Kingston), RHTC (Robert H. Turnbow, Jr. Collection), THNM (The Natural History Museum, London), USNM (Smithsonian Institution, Washington, D.C.). Duplicate specimens of identified species will be deposited in the collection of the Cayman Islands Department of Environment, George Town, Grand Cayman.

Methods

Collecting methods used included standard techniques such as beating, sweeping, and hand-collecting. Ultra-violet light traps formed a crucial part of the survey and produced the majority of the material sampled. Two or three traps were deployed every night. A flight intercept trap and two Lindgren funnel traps were placed on Grand Cayman for a week during the second trip. They produced a few, interesting species not seen otherwise.

The checklist below is arranged alphabetically by family, genus, and species. The families used are basically as used in American Beetles (Arnett and Thomas 2001), but with Bruchinae included within Chrysomelidae, Colydiinae included within Zopheridae, Ptinidae replacing Anobiidae, and Cybocephalidae recognized as a family.

Acknowledgments

This project would not have been possible without the identification help of many experts: George Ball (Carabidae); Robert Beiriger (Bostrichidae); Marc Branham (Lampyridae); Don Bright (Scolytinae); Sônia A. Casari (Elateridae); Don Chandler (Anthicidae, Pselaphinae); Shawn Clark (Chrysomelidae); Andrew Cline (Corylophidae, Nitidulidae); Robert Constantin (Melyridae); Byrd Dozier (Buprestidae); John Epler (Scirtidae); J.H. Frank (Staphylinidae); Robert Gordon (Coccinellidae); Matthew Gimmel (Phalacridae); Wesley Eugene Hall (Ptiliidae); John Kingsolver (Bruchinae, Dermestidae); Rich Leschen (Erotylidae); J. Klimaszewski (Staphylinidae); Steven Lingafelter (Cerambycidae); Nathan Lord (Latridiidae); Wenhua Lu (Mordellidae); Adriean Mayor (Melyridae); Joseph McHugh (Sphindidae); Charles O'Brien (Curculionidae, Nemonychidae, Oxycorynidae); Weston Opitz (Cleridae); Robert Otto (Eucnemidae); Stewart Peck (Leiodidae); T. Keith Philips (Anobiidae); Rudolph Schuh (Colydiinae); Paul Skelley (Erotylidae, Scarabaeidae); Paul Spangler (aquatic families); Alexey Tishechkin (Histeridae); Barry Valentine (Anthribidae); William Wolf (Dystiscidae, Haliplidae, Hydrophilidae, Noteridae).

Dr. Mat Cottam of the Cayman Islands Department of Environment facilitated acquisition of permits, provided invaluable logistical help and much good advice on habitats; Marine Parks Officer Robert Walton helped with the loan of batteries on Cayman Brac; Dr. R. R. Askew offered advice and provided some beetle specimens; Andrew L. Guthrie, General Manager, Queen Elizabeth II Botanic Park, generously granted permission to collect in the natural areas of the Park; Mercherito Chantilope graciously allowed us collecting access to his property on Cayman Brac; Mr. and Mrs. George Walton provided accommodations on Cayman Brac during both trips but especially during the summer following 2008's Hurricane Paloma that left Cayman Brac's small tourist industry in a shambles; Brett Ratcliffe granted permission to use Maps 1-2. Byrd Dozier and George E. Ball each provided companionship and help on the first and second trips, respectively. Fred Burton, formerly with the National Trust of the Cayman Islands, provided logistical help to the third author and his wife, Jil M. Swearingen, on the 1993 trip to Grand Cayman, and collected specimens on all three islands. We thank Stewart Peck and James Hayden for reviewing an earlier draft and for their helpful comments. This is Florida Department of Agriculture and Consumer Services, Division of Plant Industry, Bureau of Entomology, Nematology, and Plant Pathology, Entomology Contribution No. 1234.

LIST OF SPECIES

ADERIDAE

Aderus brunnipennis (LeConte)

CAYMAN BRAC: Bight Rd., Brac Parrot Reserve (FSCA); Brac Paradise Subdivision (FSCA); Creek (FSCA); Major Donald Dr., 0.4 km E jct. Ashton Red Dr. (FSCA; RHTC); Major Donald Dr., 0.6 km E jct. Ashton Reid Dr. (FSCA; RHTC); Hemmington Rd. at Songbird Dr. (FSCA; RHTC); GRAND CAYMAN: Mastic Trail (RHTC); LITTLE CAYMAN: North Coast Rd., 0.1 km W jct. Olivine Kirk Rd. (FSCA; RHTC)

Cnopus sp.

CAYMAN BRAC: Bight Rd., Brac Parrot Reserve (FSCA); Brac Paradise Subdivision (FSCA); Hemmington Rd. at Songbird Dr. (FSCA; RHTC); Major Donald Dr., 0.6 km E jct. Ashton Reid Dr. (FSCA; RHTC); LITTLE CAYMAN: North Coast Rd., 0.1 km W jct. Olivine Kirk Rd. (FSCA; RHTC)

Ganascus ventricosus (LeConte)

CAYMAN BRAC: Bight Rd., Brac Parrot Reserve (FSCA; RHTC); Hemmington Rd. at Songbird Dr. (RHTC); Major Donald Dr., 0.4 km E jct. Ashton Reid Dr. (FSCA; RHTC); Major Donald Dr., 0.6 km E jct. Ashton Reid Dr. (FSCA; RHTC); Sovereign Heights (RHTC)

ANTHICIDAE*Acanthinus scitulus* (LeConte)

GRAND CAYMAN: no specific locality (FSCA)

Anthicus antilleorum Werner

LITTLE CAYMAN: Sandy Point (RHTC)

Cyclodinus texanus (LaFerté-Sénéctère)

“CAYMAN ISLANDS”: no specific island or locality (Peck 2005)

Sapintus pallidus (Say)

LITTLE CAYMAN: Sandy Point (RHTC)

Sapintus similis Werner

GRAND CAYMAN: George Town, UCCI (RHTC); Queen Elizabeth II Botanic Park (FSCA; RHTC)

Sapintus sp.

GRAND CAYMAN: Queen Elizabeth II Botanic Park (FSCA)

Stricticollis tobias (Marseul)

GRAND CAYMAN: George Town, UCCI (FSCA; RHTC); Queen Elizabeth II Botanic Park (FSCA; RHTC)

Vacusus vicinus (LaFerté-Sénéctère)

CAYMAN BRAC: Hemmington Rd. at Songbird Dr. (RHTC); Major Donald Dr., 0.6 km E jct. Ashton Reid Dr. (FSCA; RHTC); GRAND CAYMAN: Boatswain Point (FSCA); Mastic Trail (FSCA); Queen Elizabeth II Botanic Park (FSCA)

ANTHRIBIDAE*Homocloeus* n. sp.

GRAND CAYMAN: George Town, UCCI (RHTC); Mastic Trail (RHTC)

Ormiscus n. sp. 1

CAYMAN BRAC: Major Donald Dr., 0.6 km E jct. Ashton Reid Dr. (FSCA)

Ormiscus n. sp. 2

CAYMAN BRAC: Brac Parrot Reserve (RHTC)

Toxonotus n. sp. near *fascicularis* Lacordaire

GRAND CAYMAN: Brac Parrot Reserve (FSCA); Major Donald Dr., 0.4 km E jct. Ashton Reid Dr. (RHTC); Major Donald Dr., 0.6 km E jct. Ashton Reid Dr. (RHTC); Hemmington Rd. at Songbird Dr. (FSCA); LITTLE CAYMAN: North Coast Rd., 0.1 km W Olivine Kirk Dr. (FSCA); 0.3 km SE Spot Bay (RHTC)

Toxonotus n. sp. near *mendax* Wolfrum

GRAND CAYMAN: Queen Elizabeth II Botanic Park (RHTC)

BOSTRICHIDAE*Amphicerus cornutus* (Pallas)

CAYMAN BRAC: Brac Paradise Subdivision (FSCA); The Creek (FSCA); Hemmington Rd. at Songbird Dr. (FSCA; RHTC); Major Donald Dr., 0.6 km E jct. Ashton Reid Dr. (FSCA; RHTC); GRAND CAYMAN: East End (FSCA); vicinity Gun Bay (FSCA); Mastic Trail (FSCA)

Apate monachus Fabricius

CAYMAN BRAC: The Bluff (FSCA)

Dinoderus minutus (Fabricius)

GRAND CAYMAN: Spanish Cove (FSCA)

Heterobostrychus aequalis (Waterhouse)

CAYMAN BRAC: Hemmington Rd. at Songbird Dr. (FSCA; RHTC); Major Donald Dr., 0.4 km E jct. Ashton Reid Dr. (FSCA); Major Donald Dr., 0.6 km E jct. Ashton Reid Dr. (FSCA; RHTC); GRAND CAYMAN: Boatswain Point (FSCA)

Lyctus africanus Lesne

GRAND CAYMAN: Tortuga Club (FSCA)

Melalgus jamaicensis (Lesne)

CAYMAN BRAC: Bight Rd., Brac Parrot Reserve (FSCA); Brac Paradise Subdivision (FSCA; RHTC); Hemmington Rd. at Songbird Dr. (RHTC); Major Donald Dr., 0.4 km E jct. Ashton Reid Dr. (FSCA); Major Donald Dr., 0.6 km E jct. Ashton Reid Dr. (FSCA; RHTC); GRAND CAYMAN: Boatswain Point (FSCA); Mastic Trail (FSCA; RHTC); Queen Elizabeth II Botanic Park (FSCA)

Minthea rugicollis Walker

CAYMAN BRAC: Brac Parrot Reserve (RHTC); Creek (FSCA); GRAND CAYMAN: George Town (RHTC); 3 km W Colliers 19°21'N 81°07'W (USNM)

n. gen., n. sp.

CAYMAN BRAC: Brac Parrot Reserve (FSCA); Hemmington Rd. at Songbird Dr. (FSCA); Major Donald Dr., 0.6 km E jct. Ashton Reid Dr. (FSCA)

Rhyzopertha dominica (Fabricius)

GRAND CAYMAN: no specific locality (FSCA)

Tetrapriocera longicornis (Olivier)

CAYMAN BRAC: Brac Paradise Subdivision (RHTC); Hemmington Rd. at Songbird Dr. (FSCA; RHTC); Major Donald Dr., 0.6 km E jct. Ashton Reid Dr. (RHTC); GRAND CAYMAN: Boatswain Point (FSCA); Queen Elizabeth II Botanic Park (FSCA) George Town (FSCA); vicinity Gun Bay (FSCA); LITTLE CAYMAN: 0.3 km SE Spot Bay (FSCA; RHTC)

Trogoxylon aequale (Wollaston)

CAYMAN BRAC: Creek (FSCA)

Xylomeira torquata (Fabricius)

CAYMAN BRAC: Hemmington Rd. at Songbird Dr. (FSCA); Major Donald Dr., 0.6 km E jct. Ashton Reid Dr. (FSCA; RHTC); GRAND CAYMAN: Boatswain Point (FSCA); George Town (FSCA); Mastic Trail (FSCA; RHTC); Queen Elizabeth II Botanic Park (FSCA); Spanish Cove (FSCA); West Bay (FSCA)

BOTHRIDERIDAE*Bothrioderes* sp.

GRAND CAYMAN: North Side 19°21'N, 81°12'W (USNM)

BRENTIDAE*Cylas formicarius* (Fabricius)

GRAND CAYMAN: Boatswain Point (FSCA); vicinity Gun Bay (RHTC)

Paratrachelizus uncimanus (Boheman)

CAYMAN BRAC: Major Donald Dr., 0.6 km E jct. Ashton Reid Dr. (RHTC)

BUPRESTIDAE*Actenodes* sp. nr. *auronotata* (Laporte and Gory)

GRAND CAYMAN: Mastic Trail (FSCA; RHTC)

Chrysobothris n.sp.

GRAND CAYMAN: East End (FSCA)

Chrysobothris sexfasciata Schaeffer

LITTLE CAYMAN: 0.3 km SE Spot Bay (RHTC)

Polycesta goryi Saunders

CAYMAN BRAC: Long Beach (FSCA; RHTC); GRAND CAYMAN: East End (RHTC); Sand Bluff (RHTC); vicinity Gun Bay (RHTC); LITTLE CAYMAN: Coot Marsh (RHTC)

Polycesta sp.

CAYMAN BRAC: South Side Road west (FSCA)

CARABIDAE

Acupalpus (Stenolophus) ochropezus (Say)

GRAND CAYMAN: George Town (Darlington 1947)

Aephnidius (Aephnidius) ciliatus Mutchler

“CAYMAN ISLANDS”: no specific island or locality (Peck 2005)

Agonum decorum (Say)

GRAND CAYMAN: Queen Elizabeth II Botanic Park (FSCA); LITTLE CAYMAN: Coot Marsh; North Coast Rd., 0.1 km W jct. Olivine Kirk Dr. (FSCA)

Agonum extensicolle cubanum Darlington

GRAND CAYMAN: West Bay (Darlington 1947)

Amblygnathus puncticollis Putzeys

“CAYMAN ISLANDS”: no specific island or locality (Peck 2005)

Anaulacus ciliatus Mutchler

GRAND CAYMAN: Hell 19°23'N, 81°24'W (USNM)

Apenes coriacea Chevrolat

GRAND CAYMAN: Mastic Trail (FSCA; RHTC); South Sound (OXUM; Darlington 1947; Ball and Shpeley 2009); south coast of South Sound (MCZC; Ball and Shpeley 2009)

Apenes delicata cayman Ball and Shpeley (Fig. 8)

CAYMAN BRAC: Bight Rd., Brac Parrot Reserve (FSCA); GRAND CAYMAN: Mastic Trail (FSCA; RHTC); Spot Bay/at bluff (Ball 1992); LITTLE CAYMAN: BWI/Central Forest (Ball 1992); 0.3 km SE Spot Bay (FSCA; RHTC); North Coast Rd., 0.1 km W jct. Olivine Kirk Dr. (FSCA; RHTC); Pirates' Point (Ball 1992) (Peck (2005) recorded *Apenes d. delicata* from the Caymans but Ball & Shpeley (2009) say that subspecies occurs only in Cuba)

Apenes parallela parallela Dejean

GRAND CAYMAN: Boatswain Point (FSCA; Ball and Shpeley 2009); Queen Elizabeth II Botanic Park (FSCA; Ball and Shpeley 2009)

Apenes scobifera steineri Ball and Shpeley

GRAND CAYMAN: 1.5 km S of Hutland (USNM; Ball and Shpeley 2009); Queen Elizabeth II Botanic Park (FSCA; Ball and Shpeley 2009)

Ardistomis cyaneolimbatus (Chevrolat)

GRAND CAYMAN: South Sound (Darlington 1947)

Badister (Baudia) reflexus LeConte

GRAND CAYMAN: Mastic Trail (FSCA; RHTC); Queen Elizabeth II Botanic Park (FSCA); LITTLE CAYMAN: North Coast Rd., 0.1 km W jct. Olivine Kirk Dr. (FSCA; RHTC)

Badister seclusus Blatchley

GRAND CAYMAN: South Sound (Darlington 1947)

Bembidion contractum (Say)

GRAND CAYMAN: South Sound (Darlington 1947)

Bembidion darlingtoni Mutchler

GRAND CAYMAN: George Town, UCCI (FSCA; RHTC)

Bembidion viridicolle (Laferté-Sénéctère)

GRAND CAYMAN: 0.7 mi. N Sand Bluff (RHTC); Mastic Trail (FSCA; RHTC); Queen Elizabeth II Botanic Park (FSCA); LITTLE CAYMAN: North Coast Rd., 0.1 km W jct. Olivine Kirk Dr. (FSCA)

Bradycellus velatus Darlington

GRAND CAYMAN: George Town (Darlington 1947)

Calleida caymanensis Darlington (Fig. 10)

CAYMAN BRAC: South Bay Lagoon (Hummelinck 1983); GRAND CAYMAN: George Town (Darlington 1947); Rum Point (Darlington 1947); LITTLE CAYMAN: North Coast Rd., 0.1 km W jct. Olivine Kirk Dr. (FSCA); South Hole Sound (Hummelinck 1983); Muddyfoot's area (Darlington 1947); South Town (Darlington 1947)

Cicindela trifasciata trifasciata Fabricius

GRAND CAYMAN: vicinity Gun Bay (RHTC); Rum Point (FSCA); Savannah (FSCA); 0.7 mi. N Sand Bluff (RHTC); Spots (FSCA); LITTLE CAYMAN: Coot Marsh (FSCA)

Clivina biguttata Putzeys

GRAND CAYMAN: Boatswain Point (FSCA)

Clivina (Paraclivina) bipustulata Fabricius

GRAND CAYMAN: Mastic Trail (RHTC)

Clivina (Paraclivina) fasciata Putzeys

“CAYMAN ISLANDS”: no specific island or locality (Peck 2005)

Colliuris caymanensis Darlington (Fig. 9)

GRAND CAYMAN: Boatswain Point (FSCA); Queen Elizabeth II Botanic Park (FSCA; RHTC); Mastic Trail (RHTC); South Sound (Darlington 1947); LITTLE CAYMAN: North Coast Rd., 0.1 km W jct. Olivine Kirk Rd. (FSCA)

Diplochaetus rutilus (Chevrolat)

GRAND CAYMAN: George Town (Darlington 1947)

Discoderus beauvoisi (Dejean)

“CAYMAN ISLANDS”: no specific island or locality (Peck 2005)

Dyschiriodes larochellei Bousquet

GRAND CAYMAN: no specific locality (FSCA)

Elaphropus sp.

GRAND CAYMAN: no specific locality (FSCA)

Galerita lecontei tenebricosa (Klug) (Fig. 11)

GRAND CAYMAN: George Town, UCCI (RHTC); no specific locality (FSCA)

Galerita vetula Chevrolat

GRAND CAYMAN: South Sound (Darlington 1947)

Halocoryza arenaria (Darlington)

“CAYMAN ISLANDS”: no specific island or locality (Peck 2005)

Lebia bitaeniata Chevrolat (Fig. 12)

CAYMAN BRAC: Hemmington Rd. at Songbird Dr. (RHTC); GRAND CAYMAN: Queen Elizabeth II Botanic Park (FSCA; RHTC); South Sound (Darlington 1947)

Lebia (Poecilothais) n. sp.

CAYMAN BRAC: Paradise Subdivision (FSCA); Major Donald Dr., 0.6 km E jct. Ashton Reid Dr. (RHTC); Bight Rd., Brac Parrot Reserve (FSCA); Major Donald Dr. at Bight Rd. (RHTC); GRAND CAYMAN: Queen Elizabeth II Botanic Park (FSCA); LITTLE CAYMAN: North Coast Rd., 0.1 km W jct. Olivine Kirk Dr. (FSCA)

Loxandrus celeris (Dejean)

GRAND CAYMAN: South Sound (Darlington 1947)

Loxandrus nocticolor Darlington

GRAND CAYMAN: no specific island or locality (Peck 2005)

Loxandrus rectangulus LeConte

GRAND CAYMAN: Queen Elizabeth II Botanic Park (FSCA; RHTC); LITTLE CAYMAN: North Coast Rd., 0.1 km W jct. Olivine Kirk Dr. (FSCA)

Masoreus ciliatus Mutchler

CAYMAN BRAC: Earthquake Hole (Darlington 1947)

Menidius amandus (Newman)

CAYMAN BRAC: Lighthouse Point (RHTC); GRAND CAYMAN: Queen Elizabeth II Botanic Park (FSCA); LITTLE CAYMAN: 0.3 mi. E Coot Marsh; E of Tarpon Lake (RHTC)

Menidius incultus Bates

CAYMAN BRAC: Bight Rd., Brac Parrot Reserve (FSCA)

Menidius n. sp.

CAYMAN BRAC: Bight Rd., Brac Parrot Reserve (FSCA)

Micratopus insularis Darlington

GRAND CAYMAN: George Town (Darlington 1947); Mastic Trail (FSCA; RHTC); Queen Elizabeth II Botanic Park (FSCA); South Sound (Darlington 1947)

Morion cordatus Chaudoir

CAYMAN BRAC: Hemmington Rd. at Songbird Dr. (FSCA); Major Donald Dr., 0.6 km E jct. Ashton Reid Dr. (FSCA; RHTC)

Oxydrepanus rufus (Putzeys)

CAYMAN BRAC: Major Donald Dr., 0.6 km E jct. Ashton Reid Dr. (RHTC); GRAND CAYMAN: Mastic Trail (FSCA; RHTC); Queen Elizabeth II Botanic Park (FSCA; RHTC); George Town, UCCI (RHTC)

Paratachys sp. 1

GRAND CAYMAN: Mastic Trail (FSCA; RHTC); Queen Elizabeth II Botanic Park (FSCA); LITTLE CAYMAN: North Coast Rd., 0.1 km W jct. Olivine Kirk Dr. (FSCA; RHTC)

Paratachys sp. 2

GRAND CAYMAN: Bodden Town (FSCA); 0.7 mi. N Sand Bluff (RHTC); Mastic Trail (FSCA; RHTC); Queen Elizabeth II Botanic Park (FSCA); LITTLE CAYMAN: North Coast Rd., 0.1 km W jct. Olivine Kirk Dr. (FSCA)

Paratachys sp. 3

GRAND CAYMAN: no specific locality (FSCA)

Paratachys sp. 4

CAYMAN BRAC: Hemmington Rd. at Songbird Dr. (FSCA)

Pentagonica flavipes flavipes LeConte

CAYMAN BRAC: Bight Rd., Brac Parrot Reserve (FSCA); Brac Paradise Subdivision (FSCA); Hemmington Rd. at Songbird Dr. (FSCA; RHTC); Major Donald Dr. at Bight Rd. (RHTC); Major Donald Dr., 0.4 E jct. Ashton Reid (FSCA); Major Donald Dr., 0.4 km E jct Bluff Rd. (FSCA); GRAND CAYMAN: Boatswain Point (FSCA); George Town, UCCI (FSCA; RHTC); South Sound (Darlington 1947); LITTLE CAYMAN: North Coast Rd., 0.1 km W jct. Olivine Kirk Dr. (FSCA; RHTC)

Pentagonica nigricornis Darlington

CAYMAN BRAC: Hemmington Rd. at Songbird Dr. (FSCA)

Pericompsus blandulus Schaum

GRAND CAYMAN: George Town (Darlington 1947)

Pericompsus jamcubanus Erwin

CAYMAN BRAC: Major Donald Dr., 0.6 km E jct. Ashton Reid Dr. (FSCA; RHTC); GRAND CAYMAN: George Town, UCCI (RHTC); forest 1.5 km S of Hutland 19°20'N, 81°13'W (USNM); Queen Elizabeth II Botanic Park (FSCA)

Perigona nigriceps Dejean

CAYMAN BRAC: Hemmington Rd. at Songbird Dr. (RHTC); Major Donald Dr., 0.6 km E jct. Ashton Reid Dr. (FSCA; RHTC); GRAND CAYMAN: Queen Elizabeth II Botanic Park (FSCA)

Pogonodaptus jamcubanus Erwin

CAYMAN BRAC: Creek (FSCA); GRAND CAYMAN: no specific locality (FSCA)

Polychaetus dejeani Chaudoir

GRAND CAYMAN: no specific locality (FSCA)

Pseudaptinus cubanus (Chaudoir)

GRAND CAMAN: George Town (Darlington 1947)

Selenophorus chalybeus Dejean

CAYMAN BRAC: Cotton-tree Land (Darlington 1947); GRAND CAYMAN: South Sound (Darlington 1947)

Selenophorus discopunctatus Dejean

GRAND CAYMAN: Queen Elizabeth II Botanic Park (FSCA); Mastic Trail (FSCA; RHTC)

Selenophorus integer Fabricius

GRAND CAYMAN: Hell 19°23'N, 81°24'W (USNM)

Selenophorus parumpunctatus Dejean

CAYMAN BRAC: Bight Rd., Brac Parrot Reserve (FSCA); Hemmington Rd. at Songbird Dr. (FSCA; RHTC); Major Donald Dr., 0.4 km E jct Ashton Reid Dr. (FSCA; RHTC); Major Donald Dr., 0.4 km E jct Bluff Rd. (FSCA); GRAND CAYMAN: Boatswain Point (FSCA); Mastic Trail (FSCA; RHTC); Queen Elizabeth II Botanic Park (FSCA); George Town, UCCI (FSCA); vicinity Gun Bay (RHTC); LITTLE CAYMAN: North Coast Rd., 0.1 km W jct. Olivine Kirk Dr. (FSCA)

Selenophorus pyritosus Dejean

CAYMAN BRAC: Major Donald Dr., 0.4 km E jct. Ashton Reid Dr. (FSCA); GRAND CAYMAN: Boatswain Point (FSCA); George Town 19°18'N, 81°23'W (USNM); Queen Elizabeth II Botanic Park (FSCA)

Selenophorus sinuatus Gyllenhal

GRAND CAYMAN: George Town 19°18'N, 81°23'W (USNM); Hell 19°23'N, 81°24'W (USNM); Prospect 19°17'N, 81°20'W (USNM)

Selenophorus striatopunctatus Putzeys

GRAND CAYMAN: Boatswain Point (FSCA); Mastic Trail (FSCA); Queen Elizabeth II Botanic Park (FSCA); George Town (FSCA)

Selenophorus n. sp.

GRAND CAYMAN: no specific locality (RHTC)

Semiardistomis cyaneolimbatus (Chevrolat)

“CAYMAN ISLANDS”: no specific island or locality (Peck 2005)

Stenocrepis duodecimstriatus Chevrolat

GRAND CAYMAN: Boatswain Point (FSCA); George Town (FSCA); Queen Elizabeth II Botanic Park (RHTC); LITTLE CAYMAN: Coot Marsh (FSCA); North Coast Rd., 0.1 km W jct. Olivine Kirk Dr. (FSCA)

Stenocrepis insulana (Jacquelin du Val)

GRAND CAYMAN: George Town (FSCA; RHTC)

Stenous insulanus (Jacquelin du Val)

GRAND CAYMAN: South Sound (Darlington 1947)

Tachys bradycellinus Hayeard

GRAND CAYMAN: forest 1.5 km S of Hutland 19°20'N, 81°13'W (USNM); 0.7 mi N Sand Bluff (RHTC); Mastic Trail (FSCA); LITTLE CAYMAN: North Coast Road, 0.1 km W jct. Olivine Kirk Rd. (FSCA)

Tachys occultator Casey

GRAND CAYMAN: no specific locality (FSCA); George Town (Darlington 1947); South Sound (Darlington 1947); LITTLE CAYMAN: South Town (Darlington 1947)

Tachys vittiger LeConte

CAYMAN BRAC: Bight Rd., Brac Parrot Reserve (FSCA); Major Donald Dr., 0.4 km E jct. Ashton Reid Dr. (FSCA); GRAND CAYMAN: 0.7 mi. N Sand Bluff (RHTC); Queen Elizabeth II Botanic Park (FSCA); Mastic Trail (FSCA); LITTLE CAYMAN: North Coast Rd., 0.1 km W jct. Olivine Kirk Dr. (FSCA)

Tetracha carolina carolina (Linnaeus) forma *occidentalis* (Klug)

GRAND CAYMAN: Mastic Trail (RHTC)

Tetragonoderus quadriguttatus Dejean

GRAND CAYMAN: George Town, UCCI (FSCA; RHTC; Shpeley and Ball 2008); Hell (USNM; Shpeley and Ball 2008); Rum Point (USNM; Shpeley and Ball 2008); West Bay (FSCA; Shpeley and Ball 2008)

Thalpius cubanus Darlington

GRAND CAYMAN: Mastic Trail (FSCA); Queen Elizabeth II Botanic Park (RHTC)

Thalpius cf. *deceptor* Darlington

GRAND CAYMAN: Mastic Trail (FSCA; RHTC); Queen Elizabeth II Botanic Park (FSCA; RHTC)

Thalpius cf. *insularis* Mutchler

GRAND CAYMAN: Queen Elizabeth II Botanic Park (RHTC)

Zuphium cubanum Liebke

GRAND CAYMAN: South Sound (Darlington 1947)

CERAMBYCIDAE*Anelaphus cinereus* (Olivier)

CAYMAN BRAC: Hemmington Rd. at Songbird Dr. (RHTC); Lighthouse Point (FSCA); Major Donald Rd., 0.6 km E jct. Ashton Reid Dr. (FSCA); GRAND CAYMAN: George Town, UCCI (FSCA; RHTC)

Anelaphus fasciatum Fisher

CAYMAN BRAC: Brac Paradise Subdivision (FSCA; RHTC); Brac Parrot Preserve (FSCA); Earthquake Hole (Fisher 1941); Hemmington Rd. at Songbird Dr. (FSCA; RHTC); Major Donald Dr., 0.4 km E jct. Ashton Reid Dr. (FSCA); Stakes Bay (Fisher 1941); LITTLE CAYMAN: Coot Marsh (FSCA); North Coast Rd., 0.1 km W jct. Olivine Kirk Rd. (FSCA; RHTC); 0.3 km SE Spot Bay (FSCA)

Ataxia spinicauda Schaeffer

CAYMAN BRAC: Brac Parrot Reserve (RHTC); Major Donald Dr. at Bight Rd. (RHTC); Major Donald Dr., 0.6 km E jct. Ashton Reid Dr. (FSCA; RHTC)

Caribbomerus asperatus (Fisher)

CAYMAN BRAC: Brac Paradise Subdivision (RHTC); Hemmington Rd. at Songbird Dr. (FSCA; RHTC); Major Donald Dr., 0.4 km E jct. Ashton Reid Dr. (RHTC); Major Donald Dr., 0.6 km E jct. Ashton Reid Dr. (FSCA; RHTC); West End Point (FSCA); GRAND CAYMAN: Boatswain Point (FSCA); Queen Elizabeth II Botanic Park (FSCA; RHTC); vicinity Gun Bay (FSCA; RHTC); Mastic Trail (RHTC); LITTLE CAYMAN: North Coast Rd., 0.1 km W jct. Olivine Kirk Rd. (RHTC); 0.3 km SE Spot Bay (RHTC)

Chlorida festiva (Linnaeus)

GRAND CAYMAN: George Town (FSCA)

Curtomerus flavus (Fabricius)

CAYMAN BRAC: Hemmington Rd. at Songbird Dr. (FSCA); Major Donald Dr., 0.6 km E jct. Ashton Reid Dr. (FSCA; RHTC); GRAND CAYMAN: Boatswain Point (FSCA); Queen Elizabeth II Botanic Park (FSCA); Queen Elizabeth II Botanic Park Rd. (RHTC); George Town (FSCA; RHTC); West Bay (FSCA)

Cyrtinus jamaicensis Howden

GRAND CAYMAN: Governor Gore's Pond (RHTC)

Desmiphora hirticollis (Olivier)

CAYMAN BRAC: Brac Paradise Subdivision (RHTC); Hemmington Rd. at Songbird Dr. (RHTC); Major Donald Rd., 0.6 km E jct. Ashton Reid Dr. (FSCA; RHTC); north shore bluff (RHTC); Sovereign Heights (RHTC)

Eburia caymanensis Fisher

GRAND CAYMAN: Queen Elizabeth II Botanic Park (FSCA); Queen Elizabeth II Botanic Park Rd. (RHTC); George Town (FSCA); vicinity Gun Bay (FSCA; RHTC); LITTLE CAYMAN: in the southwest area (Fisher 1941); South Town (Fisher 1941)

Eburia caymanensis var. *obsoleta* Fisher

LITTLE CAYMAN: North Coast Rd., 0.1 km W jct. Olivine Kirk Rd. (FSCA; RHTC); south coast of South Sound (Fisher 1948); 0.3 km SE Spot Bay (FSCA)

Eburia concisispinis Fisher

CAYMAN BRAC: Major Donald Dr. at Bight Rd. (FSCA); Brac Paradise Subdivision (FSCA); Cotton-tree Land (Fisher 1941); Hemmington Rd. at Songbird Dr. (FSCA; RHTC); Lighthouse Point (FSCA); Major Donald Dr., 0.6 km E jct. Ashton Reid Dr. (FSCA; RHTC); Market Place (RHTC); Brac Paradise Subdivision (RHTC); Long Beach (RHTC); South Sound (Fisher 1941); Stakes Bay (Fisher 1941); West End Point (FSCA; RHTC)

Eburia lewisi Fisher (Fig. 22)

CAYMAN BRAC: Brac Paradise Subdivision (FSCA); Major Donald Dr., 0.4 km E jct. Ashton Reid Dr. (RHTC); Major Donald Dr., 0.6 km E jct. Ashton Reid Dr. (FSCA; RHTC); LITTLE CAYMAN: North Coast Rd., 0.1 km W jct. Olivine Kirk Rd. (FSCA; RHTC); south coast of South Sound (Fisher 1948); south coast of South Town (Fisher 1948); 0.3 km SE Spot Bay (FSCA)

Elaphidion lanatum Chevrolat

GRAND CAYMAN: vicinity Gun Bay (FSCA; RHTC); Mastic Trail (FSCA; RHTC)

Elaphidion lewisi Fisher

CAYMAN BRAC: Brac Parrot Preserve (FSCA); East End (RHTC); Hemmington Rd. at Songbird Dr. (FSCA; RHTC); Major Donald Dr., 0.4 km E jct. Ashton Reid Dr. (RHTC); Major Donald Dr., 0.6 km E jct. Ashton Reid Dr. (FSCA; RHTC); LITTLE CAYMAN: North Coast Rd., 0.1 km W jct. Olivine Kirk Rd. (FSCA; RHTC); 0.3 km SE Spot Bay (FSCA)

Elaphidion thompsoni Fisher (Fig. 21)

CAYMAN BRAC: Brac Paradise Subdivision (RHTC); beach at Great Cave (FSCA); Creek (FSCA); Hemmington Rd. at Songbird Dr. (FSCA; RHTC); Major Donald Rd., 0.6 km E jct. Ashton Reid Dr. (FSCA; RHTC); Stakes Bay (Fisher 1941); GRAND CAYMAN: Boatswain Point (FSCA)

Elateropsis caymanensis (Fisher)

LITTLE CAYMAN: Duck Hole; Muddyfoot's area (Fisher 1941); North Coast Rd., 0.1 km W jct. Olivine Kirk Rd. (RHTC); 0.3 km SE Spot Bay (RHTC)

Elateropsis nigricornis (Fisher) (Fig. 20)

GRAND CAYMAN: Boatswain Point (FSCA); 1.6 mi. W East End (FSCA); George Town (Fisher 1941); Pedro's Castle (FSCA); Savannah (RHTC)

Elateropsis nigripes (Fisher)

CAYMAN BRAC: Brac Parrot Reserve (RHTC); Cotton-tree Land (Fisher 1941); Earthquake Hole (Fisher 1941); 4 mi. from west end on south coast (Fisher 1941); Long Beach (RHTC); north shore bluff (RHTC); Spot Bay (Fisher 1941); Stakes Bay (Fisher 1941); West End Point (RHTC)

Euryscelis suturalis Olivier

"CAYMAN ISLANDS": no specific island or locality (Peck 2005)

Lagocheirus araneiformis araneiformis (Linnaeus) (Fig. 25)

CAYMAN BRAC: Major Donald Dr., 0.6 km E jct. Ashton Reid Dr. (FSCA; RHTC); GRAND CAYMAN: Boatswain Point (FSCA); Western District (FSCA)

Leptostylopsis argentatus (Jacquelin du Val)

GRAND CAYMAN: Boatswain Point (FSCA); George Town (FSCA)

Leptostylopsis incrassatus (Klug)

CAYMAN BRAC: Lighthouse Point (RHTC); Major Donald Dr., 0.4 km E jct. Ashton Reid Dr. (RHTC); Major Donald Dr., 0.6 km E jct. Ashton Reid Dr. (FSCA; RHTC); Stake Bay (RHTC); GRAND CAYMAN: George Town (FSCA; RHTC); Mastic Trail (RHTC); vicinity Gun Bay (FSCA; RHTC); Western District (FSCA); LITTLE CAYMAN: North Coast Rd., 0.1 km W jct. Olivine Kirk Rd. (RHTC)

Leptostylus dealbatus (Jacquelin du Val) (Fig. 23)

CAYMAN BRAC: Brac Cayman Subdivision (FSCA); Major Donald Dr., 0.4 km E jct. Ashton Reid Dr. (RHTC); Major Donald Dr., 0.6 km E jct. Ashton Reid Dr. (FSCA; RHTC); GRAND CAYMAN: Boatswain Point (FSCA), George Town, UCCI (FSCA; RHTC); LITTLE CAYMAN: North Coast Rd., 0.1 km W jct. Olivine Kirk Rd. (RHTC)

Lypsimena fuscata Haldeman

GRAND CAYMAN: Mastic Trail (RHTC)

Methia necydalea (Fabricius)

CAYMAN BRAC: Hemmington Rd. at Songbird Dr. (RHTC); Major Donald Dr., 0.6 km E jct. Ashton Reid Dr. (RHTC); GRAND CAYMAN: Mastic Trail (RHTC)

Monodesmus callidioides Audinet-Serville

CAYMAN BRAC: Brac Paradise Subdivision (FSCA); Hemmington Rd. at Songbird Dr. (RHTC); Major Donald Dr., 0.4 km E jct. Ashton Reid Dr. (RHTC); Major Donald Dr., 0.6 km E jct. Ashton Reid Dr. (FSCA); GRAND CAYMAN: Boatswain Point (FSCA); Queen Elizabeth II Botanic Park (FSCA); George Town (FSCA; RHTC)

Neoclytus cordifer (Klug)

CAYMAN BRAC: Hemmington Rd. at Songbird Dr. (RHTC); GRAND CAYMAN: Mastic Trail (RHTC); Queen Elizabeth II Botanic Park (FSCA)

Nesiosphaerion caymanensis (Fisher 1948:225)

CAYMAN BRAC: Hemmington Rd. at Songbird Dr. (FSCA; RHTC); Major Donald Dr., 0.4 km E jct. Ashton Reid Dr. (RHTC); Major Donald Dr., 0.6 km E jct. Ashton Reid Dr. (FSCA; RHTC); Major Donald Dr. at Bight Rd. (FSCA); north coast of Stakes Bay (Fisher 1948); GRAND CAYMAN: vicinity Gun Bay (FSCA)

Oreodera glauca glauca (Linnaeus)

CAYMAN BRAC: Major Donald Dr., 0.6 km E jct. Ashton Reid Dr. (FSCA); Creek (FSCA)

Plectromerus michelii Nearns and Branham

GRAND CAYMAN: Boatswain Point (FSCA; Nearns 2008); East End (FSCA; RHTC); vicinity Gun Bay (FSCA; RHTC); Mastic Trail (RHTC); West Bay (Town Hall Crescent) (FSCA; Nearns and Branham 2008); no specific locality (MZSP; Nearns and Branham 2008)

Plectromerus unidentatus Fisher

CAYMAN BRAC: Brac Paradise Subdivision (FSCA; RHTC); Hemmington Rd. at Songbird Dr. (RHTC); Major Donald Dr. at Bight Rd. (RHTC); GRAND CAYMAN: Queen Elizabeth II Botanic Park (RHTC)

Prioninae: Macrotomini, genus and species unknown

GRAND CAYMAN: George Town, UCCI (RHTC) (M.A. Ivie has two specimens of apparently the same species, also from George Town, which we have not examined. This may be the “enormous prionine” that Askew (1994) reported from Grand Cayman, although *Stenodontes chevrolati* attains similar lengths.)

Psapharochrus circumflexus (Jacquelin du Val) (Fig. 24)

CAYMAN BRAC: Brac Paradise Subdivision (FSCA); The Creek (FSCA); Hemmington Rd. at Songbird Dr. (RHTC); Major Donald Dr., 0.6 km E jct. Ashton Reid Dr. (FSCA; RHTC); Stake Bay (RHTC); GRAND CAYMAN: Boatswain Point (FSCA); Mastic Trail (RHTC); Queen Elizabeth II Botanic Park (FSCA); West Bay (FSCA); Western District (FSCA)

Spalacopsis filum filum Klug

CAYMAN BRAC: East End (RHTC); GRAND CAYMAN: George Town, UCCI (RHTC); Mastic Trail (RHTC)

Stenodontes chevrolati Gahan

CAYMAN BRAC: Major Donald Dr., 0.6 km E jct. Ashton Reid Dr. (FSCA; RHTC); GRAND CAYMAN: Boatswain Point (FSCA)

Stizocera caymanensis Fisher

CAYMAN BRAC: Brac Paradise Subdivision (FSCA); Earthquake Hole (Fisher 1941); Hemmington Rd. at Songbird Dr. (FSCA; RHTC); Lighthouse Point (RHTC); Major Donald Dr., 0.6 km E jct. Ashton Reid Dr. (FSCA; RHTC); Stakes Bay (Fisher 1941); GRAND CAYMAN: Queen Elizabeth II Botanic Park (FSCA); George Town, UCCI (FSCA; RHTC); South Sound (Fisher 1941); LITTLE CAYMAN: South Town (Fisher 1941)

Styloleptus caymanensis (Fisher)

CAYMAN BRAC: Brac Paradise Subdivision (RHTC); Brac Parrot Reserve (RHTC); Hemmington Rd. at Songbird Dr. (FSCA; RHTC); Great Cave (RHTC); Lighthouse Point (RHTC); Long Beach (RHTC); Major Donald Dr., 0.4 km E jct. Ashton Reid Dr. (RHTC); Major Donald Dr., 0.6 km E jct. Ashton Reid Dr. (FSCA; RHTC); north shore bluff (RHTC); Sovereign Heights (RHTC); Stake Bay (Fisher 1948); West End Point (FSCA); GRAND CAYMAN: Mastic Trail (RHTC); LITTLE CAYMAN: south coast of South Town (Fisher 1948)

Styloleptus lewisi (Fisher)

CAYMAN BRAC: Major Donald Dr., 0.6 km E jct. Ashton Reid Dr. (RHTC); GRAND CAYMAN: Boatswain Point (FSCA); East end (Fisher 1948); George Town, UCCI (RHTC); vicinity Gun Bay (RHTC); Walkers Road (FSCA); LITTLE CAYMAN: east end of interior of Muddyfoot's area (Fisher 1948)

Styloleptus thompsoni (Fisher)

CAYMAN BRAC: Brac Parrot Reserve (RHTC); Great Cave (RHTC); Major Donald Dr., 0.4 km E jct. Ashton Reid Dr. (RHTC); Major Donald Dr., 0.6 km E jct. Ashton Reid Dr. (RHTC); GRAND CAYMAN: Boatswain Point (FSCA); North coast of North Side (Fisher 1948); George Town, UCCI (RHTC); vicinity Gun Bay (RHTC); Mastic Trail (RHTC); west end of West Bay (Fisher 1948); Western District (FSCA); LITTLE CAYMAN: 2.4 km E Blossom Village (RHTC)

Styloleptus variabilis (Fisher)

CAYMAN BRAC: Major Donald Dr., 0.6 km E jct. Ashton Reid Dr. (FSCA; RHTC)

Urgleptes sp.

GRAND CAYMAN: George Town, UCCI (RHTC); Mastic Trail (RHTC); LITTLE CAYMAN: 0.3 km SE Spot Bay (RHTC)

CERYLONIDAE

Ostomopsis neotropicalis Lawrence and Stephan

CAYMAN BRAC: Creek (FSCA)

Philothermus sp.

GRAND CAYMAN: 3 km W Colliers 19°21'N, 81°07'W (USNM); Mastic Trail (FSCA); The Mountain, 2 km SW of Old Man Bay 19°20'N, 81°07'W (USNM); Queen Elizabeth II Botanic Park (FSCA)

CHELONARIIDAE

Chelonarium sp.

CAYMAN BRAC: Brac Parrot Reserve (FSCA)

CHRYSOMELIDAE

Acanthoscelides flavescens (Fahraeus)

CAYMAN BRAC: Lighthouse Point (RHTC); GRAND CAYMAN: George Town, UCCI (RHTC)

Acanthoscelides macrophthalmus (Sharp)

CAYMAN BRAC: Major Donald Dr., 0.6 km E jct. Ashton Reid Dr. (RHTC); GRAND CAYMAN: East End (RHTC); George Town, UCCI (RHTC); East End (RHTC)

Altica occidentalis Suffrian

GRAND CAYMAN: Cayman Growers (BYUC; FSCA); 2.5km NW East End (BYUC; FSCA); Queen Elizabeth II Botanic Park (2 km S of Old Man Bay 19°19'N, 81°10'W) (BYUC; FSCA; USNM) (Clark et al. 2013)

Amblycerus caymanensis Kingsolver

CAYMAN BRAC: Lighthouse Point (FSCA; RHTC); Hemmington Rd. at Songbird Dr. (FSCA; RHTC); Major Donald Dr., 0.6 km E jct. Ashton Reid Dr. (FSCA; RHTC); west end of Cotton-tree Land (Kingsolver 1970); GRAND CAYMAN: forest 1.5 km S of Hutland 19°20'N, 81°13'W (USNM)

Amblycerus pygidialis (Suffrian)

CAYMAN BRAC: Major Donald Dr. at Ashton Reid Dr. (RHTC); Lighthouse Point (RHTC); Hemmington Rd. at Songbird Dr. (FSCA; RHTC); Major Donald Dr., 0.6 km E jct. Ashton Reid Dr. (FSCA; RHTC); West End Point (RHTC); GRAND CAYMAN: forest 1.5 km S of Hutland 19°20'N, 81°13'W (USNM)

Amblycerus schwarzi Kingsolver

CAYMAN BRAC: Major Donald Dr., 0.6 km E jct. Ashton Reid Dr. (FSCA; RHTC); South Side Road west (RHTC); West End Point (RHTC); GRAND CAYMAN: George Town, UCCI (RHTC); forest 1.5 km S of Hutland 19°20'N, 81°13'W (USNM); LITTLE CAYMAN: Coot Marsh area (FSCA); Guy Banks Rd., 2.4 km E Blossom Village (FSCA); North Coast Rd., 0.1 km W jct. Olivine Kirk Rd. (FSCA); E of Tarpon Lake (RHTC); 0.3 mi. E Coot Marsh (RHTC)

Apraea luciae Clark, Lillrose and Neto

CAYMAN BRAC: Major Donald Dr., 0.6 km E jct. Ashton Reid Dr. (FSCA; RHTC); Hemmington Rd. (FSCA); LITTLE CAYMAN: North Coast Road, 0.1 km W Olivine Kirk Dr. (FSCA); 0.3 km SE Spot Bay (FSCA) (Clark et al. 2013)

Apraea priscilae Clark, Lillrose and Neto

GRAND CAYMAN: Queen Elizabeth II Botanic Park (FSCA) (Clark et al. 2013)

Caryobruchus gleditsiae (Linnaeus)

CAYMAN BRAC: Lighthouse Point (RHTC); Major Donald Dr., 0.4 km E jct. Ashton Reid Dr. (FSCA); South Side Road west (RHTC)

Chaetocnema brunescens Horn

CAYMAN BRAC: West End Point (RHTC); GRAND CAYMAN: George Town, UCCI (FSCA; RHTC); Governor Gore's Pond (RHTC); Gun Bay (FSCA); Mastic Trail (FSCA); Meagre Bay Pond (BYUC; Clark et al. 2012); Queen Elizabeth II Botanic Park (RHTC); 0.7 km N Sand Bluff (RHTC); LITTLE CAYMAN: 2.4 km E Blossom Village (RHTC); North Coast Rd., 0.1 km W jct. Olivine Kirk Rd. (FSCA) (Clark et al. 2013)

Chaetocnema confinis Crotch

GRAND CAYMAN: George Town (FSCA) (Clark et al. 2013)

Chalepus sanguinicollis (Linnaeus)

GRAND CAYMAN: no specific locality (Clark et al. 2013)

Charidotella jamaicensis (Blake)

GRAND CAYMAN: no specific locality (Blake 1966; Clark et al. 2012)

Cryptocephalus irroratus Suffrian

GRAND CAYMAN: Bodden Town (FSCA); George Town, UCCI (FSCA; RHTC); Mastic Trail (RHTC); Queen Elizabeth II Botanic Park (FSCA) (Clark et al. 2013)

Cryptocephalus paulotigrinus Clark, Lillrose and Neto

GRAND CAYMAN: mangrove area 4 km NE Savannah 19°18'N, 81°17'W (USNM; Clark et al. 2012); Mastic Trail (FSCA; RHTC)

Cryptocephalus kirki Clark, Lillrose and Neto

CAYMAN BRAC: Brac Parrot Reserve (FSCA; RHTC); Great Cave (RHTC); Hemmington Rd. at Songbird Dr. (RHTC); Major Donald Dr., 0.4 km E jct. Ashton Reid Dr. (FSCA); Major Donald Dr., 0.6 km E jct. Ashton Reid Dr. (FSCA; RHTC); LITTLE CAYMAN: 0.3 km SE Spot Bay (RHTC)

Cryptocephalus catharineae Clark, Lillrose and Neto

GRAND CAYMAN: Mastic Trail (RHTC); Queen Elizabeth II Botanic Park (FSCA)

Deloyala guttata (Olivier)

GRAND CAYMAN: 0.7 km N Sand Bluff (RHTC) (Clark et al. 2013)

Diachus auratus (Fabricius)

GRAND CAYMAN: George Town, UCCI (FSCA); Governor Gore's Pond (RHTC)

Disonycha spilotrachelae Blake

LITTLE CAYMAN: south coast near Diggary Point 19°42'N, 80°01'W (BYUC; USNM; Clark et al. 2012)

Epitrix fasciata Blatchley

GRAND CAYMAN: George Town (FSCA); Mastic Trail (RHTC) (Clark et al. 2013)

Erynepthala maritima (LeConte)

GRAND CAYMAN: 0.7 km N Sand Bluff (RHTC) (Clark et al. 2013)

Lema trabeata Lacordaire

GRAND CAYMAN: George Town (BYUC; FSCA) (Clark et al. 2013)

Longitarsus providensis Blake

CAYMAN BRAC: Brac Paradise Subdivision (FSCA); Major Donald Dr., 0.6 km E jct. Ashton Reid Dr. (FSCA); GRAND CAYMAN: Frank Sound Rd. (RHTC); George Town (FSCA); Governor Gore's Pond (RHTC); Mastic Trail (FSCA; RHTC); North Side 19°21'N, 81°12'W (USNM; Clark et al. 2012); Queen Elizabeth II Botanic Park (FSCA) (Clark et al. 2013)

Longitarsus alisonae Clark, Lillrose and Neto

GRAND CAYMAN: Governor Gore's Pond (RHTC); LITTLE CAYMAN: Coot Marsh (FSCA) (Clark et al. 2013)

Megistops adiae Clark, Lillrose and Neto

CAYMAN BRAC: north shore bluff (RHTC); GRAND CAYMAN: Queen Elizabeth II Botanic Park (FSCA) (Clark et al. 2013)

Metachroma adustum Suffrian

CAYMAN BRAC: West End Point (FSCA; RHTC); GRAND CAYMAN: Boatswain Point (FSCA); vicinity Gun Bay (FSCA; RHTC); Mastic Trail (RHTC); Meagre Bay Pond (BYUC; Clark et al. 2012); North Side 19°21'N, 81°12'W (BYUC; Clarke et al. 2012); Rum Point (RHTC); LITTLE CAYMAN: 2.4 km E Blossom Village (FSCA; RHTC); Coot Marsh (FSCA); North Coast Rd., 0.1 km W jct. Olivine Kirk Dr. (FSCA); 0.3 km S Spot Bay (FSCA; RHTC) (Clark et al. 2013)

Metachroma clarkei Blake

CAYMAN BRAC: Songbird Dr. (FSCA); West End Point (FSCA; RHTC); GRAND CAYMAN: no specific locality (Peck 2005); LITTLE CAYMAN: Coot Marsh (FSCA); Guy Banks, 2.4 km E Blossom Village (FSCA; RHTC) (Clark et al. 2013)

Nyctiplanctus bifasciatus Clark, Lillrose and Neto

CAYMAN BRAC: Brac Paradise Subdivision (BYUC); Brac Parrot Reserve (FSCA) (Clark et al. 2013)

Omophoita albicollis (Fabricius)

GRAND CAYMAN: Boatswain Point (FSCA); East End (FSCA); West Bay (BYUC; FSCA) (Clark et al. 2013)

Omophoita cyanipennis (Fabricius)

GRAND CAYMAN: "Aboretum" (FSCA); Bodden Town (FSCA); East End (FSCA); George Town (FSCA); Governor Gore's Pond (RHTC); Mastic Trail (FSCA; RHTC); Queen Elizabeth Botanic Park (FSCA); West Bay (BYUC; FSCA) (Clark et al. 2013)

Pachybrachis sp. 1

CAYMAN BRAC: Brac Paradise Subdivision (FSCA); Brac Parrot Reserve (FSCA); Hemmington Rd. (FSCA); Hemmington Rd. at Songbird Dr. (FSCA); Long Beach (FSCA; RHTC); Major Donald Dr. at Bight Rd. (RHTC); Major Donald Dr., 0.4 km E jct. Ashton Reid Dr. (RHTC); Major Donald Dr., 0.6 km E jct. Ashton Reid Dr. (FSCA; RHTC); GRAND CAYMAN: vicinity Gun Bay (RHTC); LITTLE CAYMAN: North Coast Rd., 0.1 km W jct. Olivine Kirk Dr. (FSCA); 0.3 km SE Spot Bay (FSCA; RHTC) (Clark et al. 2013)

Pachybrachis sp. 2

GRAND CAYMAN: Bodden Town (FSCA); George Town (RHTC); Governor Gore's Pond (RHTC) (Clark et al. 2013)

Physonota (Eurypepla) jamaicensis (Linnaeus)

GRAND CAYMAN: Boatswain Point (FSCA); Frank Sound Road (RHTC); George Town, UCCI (FSCA; RHTC); Grand Cayman Growers, east end of island (FSCA); Queen Elizabeth II Botanic Garden (FSCA) (Clark et al. 2013)

Syphrea thurstonae Clark, Lillrose and Neto

CAYMAN BRAC: Brac Parrot Reserve (FSCA; RHTC); Major Donald Dr., 0.6 km E jct. Ashton Reid Dr. (FSCA); GRAND CAYMAN: 3 km W Colliers 19°21'N, 81°07'W (USNM; Clark et al. 2012); Mastic Trail (BYUC); LITTLE CAYMAN: North Coast Rd. (RHTC) (Clark et al. 2013)

CIIDAE*Cis criberrimus* Mellie

GRAND CAYMAN: Mastic Trail (RHTC); mangrove area 2 km NW of Spotts 19°18'N, 81°19'W (USNM); CAYMAN BRAC: Major Donald Dr., 0.6 km E jct. Ashton Reid Dr. (FSCA; RHTC)

Cis sp. 1

GRAND CAYMAN: mangrove area 2 km NW of Spotts 19°18'N, 81°19'W (USNM)

Cis sp. 2

GRAND CAYMAN: Mastic Trail (RHTC); Queen Elizabeth II Botanic Park (FSCA); Frank Sound Road (RHTC)

Cis sp. 3

GRAND CAYMAN: Mastic Trail (RHTC)

Orthocis sp.

CAYMAN BRAC: Creek (FSCA)

CLERIDAE*Callotillus* sp.

LITTLE CAYMAN: 0.3 km SE Spot Bay (RHTC)

Neorthopleura guadeloupensis (Wolcott)

CAYMAN BRAC: Bight Rd., Brac Parrot Reserve (FSCA; RHTC); Brac Paradise Subdivision (FSCA); Earthquake Hole (Barr 1976); vicinity Gun Bay (RHTC); Hemmington Rd. at Songbird Dr. (RHTC); Major Donald Dr., 0.4 km E jct. Ashton Reid Dr. (FSCA); Major Donald Dr., 0.6 km E jct. Ashton Reid Dr. (RHTC); Stakes Bay (Barr 1976); GRAND CAYMAN: George Town, UCCI (RHTC); vicinity Gun Bay (RHTC); Mastic Trail (FSCA; RHTC); LITTLE CAYMAN: Cotton-tree Land (Barr 1976); Muddyfoot's Area (Barr 1976); North Coast Rd., 0.1 km W jct. Olivine Kirk Rd. (FSCA); South Town (Barr 1976)

Onycotillus sp.

CAYMAN BRAC: Major Donald Dr., 0.6 km E jct. Ashton Reid Dr. (FSCA; RHTC)

Pelonium sp. A (Fig. 17)

GRAND CAYMAN: Mastic Trail (RHTC)

Pelonium sp. B

LITTLE CAYMAN: 3 km SE Spot Bay (FSCA); North Coast Road, 0.1 km West Olivine Kirk Dr. (FSCA); CAYMAN BRAC: Major Donald Dr. at Bight Rd. (FSCA)

Pelonium sp.

CAYMAN BRAC: Brac Paradise Subdivision (FSCA); Hemmington Rd. at Songbird Dr. (FSCA)

Tarsostenus univittatus (Rossi)

GRAND CAYMAN: George Town [intercepted from *Lyctus*-infested wooden handicrafts] (FSCA)

COCCINELLIDAE

Chilocorus cacti (Linnaeus)

CAYMAN BRAC: West End Point (FSCA); GRAND CAYMAN: Boatswain Point (FSCA); George Town (RHTC); south coast at head of bay 19°40'N, 80°04'W (USNM)

Coccidophilus citricolus Brèthes

GRAND CAYMAN: no specific locality (Askew 1994)

Cryptolaemus montrouzieri Mulsant

GRAND CAYMAN: George Town (RHTC)

Cycloneda caymana (Chapin)

GRAND CAYMAN: east end of East End (Chapin 1957); north coast of North Side (Chapin 1957); Mastic Trail (FSCA); Queen Elizabeth II Botanic Park (RHTC)

Cycloneda sanguinea (Linnaeus)

CAYMAN BRAC: Brac Parrot Reserve (RHTC); north shore bluff (RHTC); Sovereign Heights (RHTC); West End Point (RHTC); GRAND CAYMAN: Boatswain Point (FSCA); east end of East End (Chapin 1957); George Town (RHTC); Governor Gore's Pond (RHTC); north coast of North Side (Chapin 1957); Queen Elizabeth II Botanic Park (FSCA; RHTC); 0.7 mi N Sand Bluff (RHTC); LITTLE CAYMAN: 0.3 mi. E Coot Marsh (RHTC)

Decadiomus sp.

CAYMAN BRAC: Brac Parrot Reserve (FSCA); GRAND CAYMAN: 3 km W Colliers 19°21'N, 81°07'W (USNM); 0.7 mi. N Sand Bluff (RHTC)

Diomus thoracicus (Fabricius)

CAYMAN BRAC: Brac Parrot Reserve (FSCA; RHTC); Long Beach (FSCA); GRAND CAYMAN: George Town (RHTC); Mastic Trail (RHTC); Queen Elizabeth II Botanic Park (FSCA)

Diomus sp. 1

CAYMAN BRAC: Brac Parrot Reserve (FSCA); north shore bluff (RHTC)

Diomus sp. 2

CAYMAN BRAC: Brac Parrot Reserve (FSCA; RHTC); Long Beach (FSCA); Major Donald Dr. at Ashton Reid Dr. (RHTC); north shore bluff (RHTC); West End Point (RHTC); GRAND CAYMAN: Bodden Town (FSCA); George Town (RHTC); Governor Gore's Pond (RHTC); Queen Elizabeth II Botanic Park (FSCA); Savannah (FSCA); LITTLE CAYMAN: North Coast Rd., 0.1 km W jct. Olivine Kirk Rd. (FSCA)

Exochomus sp.

GRAND CAYMAN: George Town (RHTC); Mastic Trail (FSCA; RHTC)

Microweisea sp.

GRAND CAYMAN: Palmetto Point near Barkers 19°23'N, 81°22'W (USNM); 0.7 mi. N Sand Bluff (RHTC)

Naemia seriata (Melsheimer)

GRAND CAYMAN: 0.7 mi. N Sand Bluff (RHTC)

Nelasa sp.

CAYMAN BRAC: Major Donald Dr. at Ashton Reid Dr. (FSCA); GRAND CAYMAN: Mastic Trail (RHTC)

Olla v-nigrum Mulsant

GRAND CAYMAN: Boatswain Point (FSCA); George Town (FSCA; RHTC); Queen Elizabeth II Botanic Park (FSCA); 3 km W Colliers 19°21'N 81°07'W (USNM); West Bay (FSCA)

Psyllobora nana Mulsant

GRAND CAYMAN: Boatswain Point (FSCA); 3 km W Colliers 19°21'N, 81°07'W (USNM); George Town (FSCA; RHTC); Governor Gore's Pond (RHTC); Mastic Trail (FSCA)

Psyllobora sp. near *punctella* Mulsant

CAYMAN BRAC: west end of Cotton-tree Land (Chapin 1957); east end of Spot Bay (Chapin 1957)

Psyllobora schwarzi Chapin

GRAND CAYMAN: George Town (FSCA; RHTC); Mastic Trail (FSCA); south coast of South Town (Chapin 1957)

Psyllobora sp. 1

GRAND CAYMAN: Boatswain Point (FSCA); George Town (FSCA; RHTC); Governor Gore's Pond (RHTC); Mastic Trail (FSCA)

Psyllobora sp. 2

GRAND CAYMAN: George Town (FSCA; RHTC); Mastic Trail (FSCA)

Rodolia cardinalis (Mulsant)

GRAND CAYMAN: no specific locality (Askew 1994)

Scymnus (Pullus) sp.

GRAND CAYMAN: Frank Sound Rd. (RHTC); 0.7 mi. N Sand Bluff (RHTC)

Stethorus utilis (Horn)

GRAND CAYMAN: no specific locality (FSCA)

Zilus sp.

CAYMAN BRAC: Brac Parrot Reserve (RHTC); Creek (FSCA)

CORYLOPHIDAE*Clypastraea* sp. nr. *instabile* (Matthews)

GRAND CAYMAN: forest 1.5 km S of Hutland 19°20'N, 81°13'W (USNM)

Sericoderus sp.

CAYMAN BRAC: Creek (FSCA)

CRYPTOPHAGIDAE*Curelius* sp.

GRAND CAYMAN: no specific locality (FSCA)

CURCULIONIDAE*Ambrosiodmus hagedorni* (Iglesias)

GRAND CAYMAN: no specific locality (FSCA)

Anthonomus xylem Clark

CAYMAN BRAC: Bight Rd., Brac Parrot Reserve (FSCA); Brac Paradise Subdivision (FSCA; RHTC); Hemmington Rd. at Songbird Dr. (FSCA); Major Donald Dr., 0.6 km E jct. Ashton Reid Dr. (FSCA; RHTC); GRAND CAYMAN: East End (RHTC); vicinity Gun Bay (RHTC)

Anthonomus sp. 4

GRAND CAYMAN: George Town, UCCI (RHTC)

Anthonomus sp. 5

GRAND CAYMAN: George Town, UCCI (RHTC)

Artipus n. sp. near *freyanus* Kuschel

CAYMAN BRAC: Brac Paradise Subdivision (RHTC); Brac Parrot Reserve (RHTC); Great Cave (RHTC); Long Beach (RHTC); Major Donald Dr., 0.6 km E jct. Ashton Reid Dr. (RHTC); north shore bluff (RHTC); Sovereign Heights (FSCA); GRAND CAYMAN: East End (RHTC); vicinity Gun Bay (FSCA; RHTC); Mastic Trail (FSCA; RHTC); LITTLE CAYMAN: east of Tarpon Lake (RHTC); North Coast Rd. (RHTC); 0.3 km SE Spot Bay (RHTC)

Artipus n. sp. 2

GRAND CAYMAN: George Town, UCCI (RHTC)

cf. *Artipus* n. sp. or n. gen n. sp.

CAYMAN BRAC: Brac Parrot Reserve (RHTC); Sovereign Heights (RHTC)

Caulophilus sp. 1

GRAND CAYMAN: Queen Elizabeth II Botanic Park (FSCA)

Cnemonyx ficus (Schwarz)

GRAND CAYMAN: Boatswain Point, Lime Tree Estate (FSCA); Queen Elizabeth II Botanic Park (FSCA)

Coccotrypes dactyliperda (Fabricius)

GRAND CAYMAN: George Town, UCCI (FSCA; RHTC)

Cophes oblongus (LeConte)

GRAND CAYMAN: Frank Sound Road (RHTC); George Town, UCCI (RHTC); vicinity Gun Bay (FSCA); Mastic Trail (RHTC); Queen Elizabeth II Botanic Park (RHTC)

Cossonus impressus Boheman

CAYMAN BRAC: Bight Rd., Brac Parrot Reserve (FSCA;RHTC); Hemmington Rd. at Songbird Dr. (FSCA; RHTC); Major Donald Dr., 0.6 km E jct. Ashton Reid Dr. (FSCA; RHTC); north shore bluff (FSCA; RHTC); GRAND CAYMAN: Mastic Trail (RHTC); LITTLE CAYMAN: North Shore Rd., 0.1 km W jct. Olivine Kirk Dr. (FSCA; RHTC)

Cossonus sp. 1

CAYMAN BRAC: Lighthouse Point (RHTC)

Cryptocarenum heveae (Hagedorn)

CAYMAN BRAC: Creek (CWOB); GRAND CAYMAN: Mastic Trail (FSCA)

Cryptocarenum seriatus Eggers

GRAND CAYMAN: Mastic Trail (FSCA; RHTC)

Cryptorhynchus (*sen. lat.*) sp.

GRAND CAYMAN: Boatswain Point (FSCA)

Dendrocranulus n. sp.

CAYMAN BRAC: Creek (FSCA)

Eusepeus porcellus Boheman

GRAND CAYMAN: George Town, UCCI (RHTC)

Gononotus angulicollis (Suffrian)

GRAND CAYMAN: Frank Sound, 1 km E Breakers 19°18'N 81°11'W (USNM); Palmetto Point, nr. Barkers 19°23'N 81°22'W (USNM); South Sound, nr. Pull-and-be-Damned Pt. 19°16'N 81°22'W (USNM)

Himatium rugicolle Champion

GRAND CAYMAN: Queen Elizabeth Botanic Park (FSCA)

Huaca quisco Clark

CAYMAN BRAC: Major Donald Dr., 0.6 km E jct. Ashton Reid Dr. (FSCA; RHTC); GRAND CAYMAN: Queen Elizabeth II Botanic Park (FSCA; RHTC)

Hypothenemus africanus (Hopkins)

GRAND CAYMAN: no specific locality (FSCA)

Hypothenemus birmanus (Eichhoff)

CAYMAN BRAC: Brac Parrot Reserve (RHTC); GRAND CAYMAN: George Town, UCCI (FSCA; RHTC); Rum Point (RHTC)

Hypothenemus brunneus (Hopkins)

CAYMAN BRAC: Major Donald Dr., 0.6 km E jct. Ashton Reid Dr. (RHTC); Bight Rd., Brac Parrot Reserve (FSCA); GRAND CAYMAN: George Town, UCCI (RHTC)

Hypothenemus crudiae (Panzer)

GRAND CAYMAN: East End (RHTC)

Hypothenemus eruditus Westwood

GRAND CAYMAN: Mastic Trail (FSCA)

Hypothenemus pubescens Hopkins

GRAND CAYMAN: Mastic Trail (RHTC); 0.7 mi. N Grand Bluff (RHTC)

Hypothenemus rotundicollis (Eichhoff)

Little Cayman: 0.3 km SE Spot Bay (RHTC)

Hypothenemus squamosus Hopkins

CAYMAN BRAC: Creek (FSCA); LITTLE CAYMAN: 3 km SE Spot Bay (RHTC)

Lachnopus sp. 1

CAYMAN BRAC: Bight Rd., Brac Parrot Reserve (FSCA; RHTC); Brac Paradise Subdivision (RHTC); Lighthouse Point (RHTC); Major Donald Dr., 0.6 km E jct. Ashton Reid Dr. (RHTC); Sovereign Heights (RHTC); GRAND CAYMAN: East End (RHTC); vicinity Gun Bay (RHTC); Mastic Trail (FSCA); LITTLE CAYMAN: Coot Marsh (FSCA; RHTC); east of Tarpon Lake (RHTC); North Coast Road, 0.1 km W jct. Olivine Kirk Dr. (FSCA; RHTC); 0.3 km E Coot Marsh (RHTC); 0.3 km SE Spot Bay (RHTC); 2.4 km E Blossom Village (FSCA; RHTC)

Lachnopus sp. 2

CAYMAN BRAC: Brac Parrot Reserve (RHTC); GRAND CAYMAN: Mastic Trail (FSCA; RHTC); Queen Elizabeth II Botanic Park (FSCA; RHTC)

Lembodes ulula Chevrolat

CAYMAN BRAC: Brac Parrot Reserve (RHTC); Long Beach (RHTC); Major Donald Dr., 0.6 km E jct. Ashton Reid Dr. (RHTC); Songbird Dr. (FSCA); GRAND CAYMAN: George Town, UCCI (RHTC); vicinity Gun Bay (FSCA); Mastic Trail (FSCA; RHTC); Queen Elizabeth II Botanic Park (FSCA)

Liparthrum n. sp.

GRAND CAYMAN: Queen Elizabeth II Botanic Park (FSCA); LITTLE CAYMAN: North Coast Rd., 0.1 km W Olivine Kirk Dr. (FSCA)

Lissorhoptrus oryzophilus Kuschel

GRAND CAYMAN: Queen Elizabeth II Botanic Park (FSCA; RHTC)

Microborus n. sp.

CAYMAN BRAC: Major Donald Dr., 0.6 km E jct. Ashton Reid Dr. (FSCA); Creek (FSCA); Bight Rd., Brac Parrot Reserve (FSCA); Major Donald Dr., 0.4 km E jct. Ashton Reid Dr. (FSCA); GRAND CAYMAN: George Town; Mastic Trail (FSCA); LITTLE CAYMAN: (FSCA); 0.3 km SE Spot Bay (FSCA)

Micromimus cf. *minimus* (Boheman)

CAYMAN BRAC: Major Donald Dr., 0.6 km E jct. Ashton Reid Dr. (FSCA; RHTC); GRAND CAYMAN: no specific locality (FSCA)

Notolomus variegatus (Suffrian)

CAYMAN BRAC: Major Donald Dr., 0.6 km E jct. Ashton Reid Dr. (RHTC); South Side Road west (RHTC); Sovereign Heights (FSCA); GRAND CAYMAN: Mastic Trail (RHTC); Queen Elizabeth II Botanic Park (FSCA; RHTC)

Pachnaeus azurescens griseus Gyllenhal

CAYMAN BRAC: Bight Rd., Brac Parrot Reserve (FSCA; RHTC); Major Donald Dr., 0.6 km E jct. Ashton Reid Dr. (FSCA)

cf. *Peribrotus* n. sp. or *Artipus* n. sp.

GRAND CAYMAN: Mastic Trail (RHTC)

Phloeotribus n. sp.

CAYMAN BRAC: Creek (FSCA)

Pityophthorus sp.

GRAND CAYMAN: George Town (FSCA; RHTC)

Plocetes bahamensis (Casey)

CAYMAN BRAC: Hemmington Road at Songbird Dr. (FSCA)

Plocetes simulacrifer Clark

GRAND CAYMAN: no specific locality (FSCA)

Pseudanthonomus sp. near *testaceus* (Boheman)

GRAND CAYMAN: Queen Elizabeth II Botanic Park (RHTC)

Pseudomopsis inflata (LeConte)

GRAND CAYMAN: Boatswain Point (FSCA); George Town (FSCA)

Pseudopentarthrum n. sp.

CAYMAN BRAC: Great Cave (RHTC); Major Donald Dr., 0.6 km E jct. Ashton Reid Dr. (FSCA); 1.6 mi. W East End (FSCA; RHTC); South Side Rd. west (RHTC); West End Point (FSCA; RHTC); GRAND CAYMAN: East End (RHTC); Rum Point (FSCA; RHTC); LITTLE CAYMAN: North Coast Rd. (RHTC)

Pseudothysanoes magnispinatus Bright & Torres

CAYMAN BRAC: Major Donald Dr., 0.6 km E jct. Ashton Reid Dr. (RHTC)

Pycnarthrum hispidum (Ferrari)

GRAND CAYMAN: George Town, UCCI; CAYMAN BRAC: Creek (FSCA); Brac Parrot Reserve (FSCA)

Scalaventer caymani Howden

CAYMAN BRAC: Brac Parrot Reserve (RHTC); Great Cave (RHTC); Hemmington Rd. at Songbird Dr. (FSCA); Long Beach (FSCA; RHTC); Major Donald Dr., 0.6 km E jct. Ashton Reid Dr. (RHTC); West End Point (FSCA); GRAND CAYMAN: East End (FSCA; RHTC); Frank Sound Road (RHTC); George Town (FSCA; RHTC); Governor Gore's Pond (RHTC); vicinity Gun Bay (FSCA); Mastic Trail (FSCA; RHTC); North Side 19°18'N 81°12'W (USNM); Queen Elizabeth II Botanic Park Road (FSCA; RHTC); Rum Point (FSCA); Salina Reserve 19°18'N 81°08'W (USNM); 0.7 km S Sand Bluff (RHTC)

Scolytodes glaber (Eichhoff)

GRAND CAYMAN: George Town, UCCI (RHTC)

Scolytogenes jalapae (Letzner)

GRAND CAYMAN: no specific locality (FSCA)

Sphenophorus cubensis Howden

GRAND CAYMAN: George Town 19°18'N 81°23'W (USNM)

Stenancylus colomboi Casey

GRAND CAYMAN: George Town, UCCI (RHTC); Mastic Trail (RHTC)

Stenomimus sp. 1

CAYMAN BRAC: Major Donald Dr., 0.6 km E jct. Ashton Reid Dr. (FSCA; RHTC)

Tyloderma danforthi Wolcott

GRAND CAYMAN: "near George Town" (Wibmer 1989)

Xylosandrus compactus (Eichhoff)

GRAND CAYMAN: Northside (FSCA)

Xyleborus affinis Eichhoff

GRAND CAYMAN: no specific locality (FSCA)

Xyleborus ferrugineus (Fabricius)

CAYMAN BRAC: Major Donald Dr., 0.4 km E jct. Ashton Reid Dr. (FSCA); GRAND CAYMAN: Mastic Trail (FSCA; RHTC); LITTLE CAYMAN: 0.3 km SE Spot Bay (FSCA)

CYBOCEPHALIDAE*Cybocephalus nipponicus* Endrödy-Younga

GRAND CAYMAN: no specific locality (FSCA)

DERMESTIDAE*Dermestes ater* Degeer

GRAND CAYMAN: North West Point (FSCA); West Bay (FSCA)

Trogoderma ornatum (Say)

GRAND CAYMAN: vicinity Gun Bay (FSCA)

DRYOPIDAE*Pelonomus obscurus gracilipes* Chevrolat

GRAND CAYMAN: George Town, UCCI (RHTC); vicinity Gun Bay (RHTC); Mastic Trail (RHTC); Queen Elizabeth II Botanic Park (FSCA; RHTC)

DYTISCIDAE*Bidessonotus pulicarius* (Aubé)

GRAND CAYMAN: no specific locality (FSCA); 1.5 km S Hutland, 19°20'N, 81°13'W (USNM); North Side, 19°21'N, 81°12'W (USNM)

Celina slossoni Mutchler

GRAND CAYMAN: S. coast, South Sound (THNM, USNM)

Copelatus caelatipennis Aubé

CAYMAN BRAC: N. coast, Stakes Bay (THNM, USNM); GRAND CAYMAN: West end of, Georgetown (THNM, USNM); Queen Elizabeth II Botanic Park (FSCA)

Copelatus chevrolati Aubé

CAYMAN BRAC: Z. Kust near Spots (USNM); GRAND CAYMAN: West end, Georgetown (THNM, USNM); S. coast, Newlands (THNM, USNM); North Side, 19°21'N, 81°12'W (USNM); Spot[t]s (FSCA, USNM); West end, West Bay area, Hell (THNM, USNM)

Derovatellus floridanus Fall

GRAND CAYMAN: no specific locality (FSCA)

Desmopachria majuscula Young

GRAND CAYMAN: no specific locality (FSCA)

Desmopachria sp

GRAND CAYMAN: North Side, 19°21'N, 81°12'W (USNM); Queen Elizabeth II Botanic Park (FSCA)

Hydaticus bimarginatus (Say)

GRAND CAYMAN: West end, Georgetown (THNM, USNM); S. coast, Newlands (THNM, USNM); Queen Elizabeth II Botanic Park (FSCA); S. coast, South Sound (THNM, USNM)

Hydaticus rimosus Aubé

GRAND CAYMAN: West end, Georgetown (THNM, USNM); East end, interior, Great Beach (THNM, USNM); S. coast, Newlands (THNM, USNM); S. coast, South Sound (THNM, USNM)

Hydrodytes dodgei (Young)

GRAND CAYMAN: West end, Georgetown (USNM)

Laccodytes pumilio (LeConte)

GRAND CAYMAN: Queen Elizabeth II Botanic Park (FSCA)

Laccophilus gentilis suavis Sharp

GRAND CAYMAN: East end, East end (THNM, USNM)

Laccophilus proximus Say

CAYMAN BRAC: West end, Cotton-tree Land (THNM, USNM); GRAND CAYMAN: no specific locality (USNM, IJC); East end, East end (THNM, USNM); N. coast, English Cisterns (THNM, USNM); 1.5 km S Hutland, 19°20'N, 81°13'W (USNM); S. coast, nr. Pedro Castle (THNM, USNM); West Bay (FSCA); West end, West Bay area, Hell (THNM, USNM)

Laccophilus sp.

GRAND CAYMAN: Queen Elizabeth II Botanic Park (FSCA)

Liodessus noviaffinis K. B. Miller

GRAND CAYMAN: no specific locality (FSCA)

Megadytes fraternus Sharp

GRAND CAYMAN: no specific locality (USNM, IJC); N. coast, English Cisterns (THNM, USNM); Georgetown, UCCI (FSCA;RHTC); East End Village (Flowers and Klenke, 1976); East end, interior, Great Beach (THNM, USNM); S. coast, Newlands (THNM, USNM); N. coast, North Side, Hut Road (THNM, USNM); Queen Elizabeth II Botanic Park (FSCA); West end, N. W. Point, Pool of Silence (THNM, USNM)

Megadytes giganteus (Laporte)

GRAND CAYMAN: no specific locality (USNM, IJC); East End Village (Flowers and Klenke, 1976); GRAND CAYMAN: Georgetown, UCCI (FSCA, RHTC); N. coast, English Cisterns (THNM, USNM); Georgetown, UCCI (RHTC); East end, interior, Great Beach (THNM, USNM); S. coast, Newlands (THNM, USNM); N. coast, North Side, Hut Road (THNM, USNM); West end, N. W. Point, Pool of Silence (THNM, USNM); Queen Elizabeth II Botanic Park (FSCA); West end, West End (THNM, USNM); East end, interior, Wintersland Cistern (THNM, USNM)

Neobidessus sp.

GRAND CAYMAN: North Side, 19°21'N, 81°12'W (USNM); S. coast, South Sound (THNM, USNM)

Pachydrus princeps (Blatchley)

CAYMAN BRAC: Major Donald Dr., .6 km. E jct. Ashton Reid Dr. (FSCA)

Pachydrus sp.

GRAND CAYMAN: no specific locality (USNM, IJC)

Rhantus calidus (Fabricius)

CAYMAN BRAC: West end of Cotton-tree Land (THNM, USNM); N. coast, Earthquake Hole (THNM, USNM); N. coast, Stakes Bay (THNM, USNM); GRAND CAYMAN: no specific locality (USNM, IJC); East end of interior Boiling Hole (THNM, USNM); East end of East End (THNM, USNM); East End Village (Flowers and Klenke, 1976); Georgetown, UCCI (FSCA, RHTC); N. coast of English Cisterns (THNM, USNM); Georgetown, UCCI (RHTC); East end of interior Great Beach (THNM, USNM); S. coast of Newlands (THNM, USNM); North Side 19°21'N, 81°12'W (USNM); N. coast of North Side Hut Road (THNM, USNM); West end of N. W. Point Pool of Silence (THNM, USNM); S. coast of nr. Pedro Castle (THNM, USNM); Queen Elizabeth II Botanic Park (FSCA); S. coast of South Sound (THNM, USNM); West end of West Bay area, Hell (THNM, USNM)

Thermonectus basillaris (Harris)

CAYMAN BRAC: West end of Cotton-tree Land (THNM, USNM); Cotton Tree Pond, West End (THNM, USNM); N. coast, Earthquake Hole (THNM, USNM); N. coast, Stakes Bay (THNM, USNM); GRAND CAYMAN: no specific locality (USNM, IJC); Boatswain Point (FSCA); 3 km W Colliers, 19°21'N, 81°07'W (USNM); N. coast English Cisterns (THNM, USNM); West end, Georgetown (THNM, USNM); Georgetown (4 mi. N.) (USNM); S. coast, nr. Pedro Castle (THNM, USNM); S. coast, South Sound (THNM, USNM); Queen Elizabeth II Botanic Park (FSCA); West Bay (FSCA) West end, West Bay area, Hell (THNM, USNM); LITTLE CAYMAN: Airstrip Well (USNM); Interior, West end, 'Duck Hole' (THNM, USNM)

Thermonectus circumscriptus (Latreille)

CAYMAN BRAC: West end, Cotton-tree Land (THNM, USNM); GRAND CAYMAN: S. coast, Newlands (THNM, USNM); S. coast, nr. Pedro Castle (THNM, USNM); Queen Elizabeth II Botanic Park (FSCA); S. coast, South Sound (THNM, USNM)

ELATERIDAE*Aeolus* sp.

LITTLE CAYMAN: 2.4 km E Blossom Village (RHTC); Coot Marsh (FSCA)

Anchastus aff. rufiventris Candèze

CAYMAN BRAC: Bight Rd., Brac Parrot Reserve (FSCA); Brac Paradise Subdivision (FSCA; RHTC); Hemmington Rd. at Songbird Dr. (FSCA); Major Donald Dr., 0.4 km E jct Ashton Reid Dr. (FSCA); Major Donald Dr., 0.6 km E jct. Ashton Reid Dr. (FSCA); GRAND CAYMAN: vicinity Gun Bay (RHTC); Mastic Trail (FSCA); Queen Elizabeth II Botanic Park (FSCA); LITTLE CAYMAN: North Coast Rd., 0.1 km W jct. Olivine Kirk Rd. (FSCA); 0.3 km SE Spot Bay (FSCA)

Chalcolepidius silbermanni Chevrolat

CAYMAN BRAC: Lighthouse Point (FSCA); GRAND CAYMAN: Mastic Trail (FSCA; RHTC)

Dicrepidius ramicornis (Palisot de Beauvois)

CAYMAN BRAC: Major Donald Dr., 0.6 km E jct. Ashton Reid Dr. (FSCA); GRAND CAYMAN: Queen Elizabeth II Botanic Park (FSCA; RHTC); Boatswain Point (FSCA); Vicksville, Northwest Point (FSCA); Western District (FSCA)

Dipropus sp.

CAYMAN BRAC: Bight Rd., Brac Parrot Reserve (FSCA); GRAND CAYMAN: Boatswain Point (FSCA); Mastic Trail (FSCA); Queen Elizabeth II Botanic Park (FSCA)

Esthesopus poedicus Candèze

CAYMAN BRAC: Bight Rd., Brac Parrot Reserve (RHTC); Brac Paradise Subdivision (FSCA; RHTC); Hemmington Rd. at Songbird Dr. (FSCA; RHTC); Major Donald Dr., 0.6 km E jct. Ashton Reid Dr. (FSCA; RHTC); GRAND CAYMAN: Mastic Trail (FSCA; RHTC); Queen Elizabeth II Botanic Park (FSCA)

Heteroderes laurentii (Guérin)

GRAND CAYMAN: Boatswain Point (FSCA)

Ignelater glaesun Costa

CAYMAN BRAC: Bight Rd., Brac Parrot Reserve (FSCA; RHTC); Brac Paradise Subdivision (FSCA); Major Donald Dr., 0.4 km E jct. Ashton Reid Dr. (RHTC); GRAND CAYMAN: Mastic Trail (FSCA); LITTLE CAYMAN: North Coast Rd., 0.1 km W jct. Olivine Kirk Rd. (FSCA; RHTC)

Lacon subcostatus (Candèze)

CAYMAN BRAC: Bight Rd., Brac Parrot Reserve (FSCA; RHTC); Brac Paradise Subdivision (FSCA; RHTC); Hemmington Rd. at Songbird Dr. (RHTC); Major Donald Dr., 0.6 km E jct. Ashton Reid Dr. (FSCA; RHTC); LITTLE CAYMAN: 2.4 km E Blossom Village (RHTC); Coot Marsh (FSCA); North Coast Rd., 0.1 km W jct. Olivine Kirk Rd. (FSCA; RHTC); 0.3 km SE Spot Bay (FSCA)

Monocrepidius aff. *castanipes* (Fabricius)

CAYMAN BRAC: Brac Paradise Subdivision (FSCA); Long Beach (FSCA); West End Point (RHTC); GRAND CAYMAN: East End (RHTC); vicinity Gun Bay (FSCA; RHTC); 0.7 mi. N Sand Bluff (RHTC); West Bay (FSCA); LITTLE CAYMAN: Guy Banks Rd., 2.4 km E Blossom Village (FSCA); North Coast Rd., 0.1 km W jct. Olivine Kirk Rd. (FSCA; RHTC); Coot Marsh (FSCA); 0.3 km E Coot Marsh (RHTC); E of Tarpon Lake (RHTC); 0.3 km SE Spot Bay (FSCA; RHTC)

Monocrepidius sp.

GRAND CAYMAN: George Town, UCCI (RHTC)

Pherhimius fascicularis (Fabricius)

CAYMAN BRAC: Hemmington Rd. at Songbird Dr. (FSCA)

EROTYLIDAE*Loberus* sp.

CAYMAN BRAC: Major Donald Dr., 0.6 mi. E jct. Ashton Reid Dr. (RHTC); 0.3 mi. SE Spot Bay (RHTC); GRAND CAYMAN: Boddentown (FSCA); Queen Elizabeth II Botanic Park (FSCA; RHTC); Frank Sound Rd. (RHTC); George Town, UCCI (FSCA; RHTC); Governor Gore's Pond (RHTC); Mastic Trail (FSCA; RHTC); Rum Point (RHTC)

Cryptophilus sp.

CAYMAN BRAC: Brac Paradise Subdivision (FSCA); Creek (FSCA); GRAND CAYMAN: George Town, UCCI (FSCA); Mastic Trail (FSCA)

Pharaxanota sp.

CAYMAN BRAC: Brac Parrot Reserve (FSCA); Major Donald Dr., 0.4 km E jct. Ashton Reid Dr. (FSCA); GRAND CAYMAN: Queen Elizabeth II Botanic Park (FSCA); Salina Reserve, 19°21'N, 81°08'W (USNM)

Toramus sp.

CAYMAN BRAC: Brac Parrot Reserve (FSCA); Creek (FSCA)

EUCNEMIDAE*Dromaeolus teres* (Horn)

CAYMAN BRAC: Major Donald Dr., 0.6 km E jct. Ashton Reid Dr. (FSCA); GRAND CAYMAN: Mastic Trail (FSCA; RHTC); Queen Elizabeth II Botanic Park (FSCA)

Nematodes exiguus Fisher

GRAND CAYMAN: George Town, UCCI (FSCA); Mastic Trail (FSCA)

Nematodes simulans Chevrolat

GRAND CAYMAN: George Town, UCCI (RHTC); Mastic Trail (RHTC)

Protofarsus caribicus Muona

CAYMAN BRAC: Brac Paradise Subdivision (FSCA)

GYRINIDAE*Dineutus metallicus* Aubé

LITTLE CAYMAN: Interior, West end, 'Duck Hole' (THNM, USNM); CAYMAN BRAC: N. coast, Earthquake Hole (THNM, USNM)

HALIPLIDAE*Haliphus cubensis* Chapin

GRAND CAYMAN: east end, East End (USNM; Vondel and Spangler 2008); S coast, South Sound (USNM; Vondel and Spangler 2008); west end of[,] George Town (USNM; Vondel and Spangler 2008)

HETEROCERIDAE*Neoheterocerus* sp.

CAYMAN BRAC: Brac Paradise Subdivision (FSCA); Brac Parrot Reserve (FSCA); Hemmington Rd. at Songbird Dr. (FSCA); Major Donald Dr., 0.6 km E jct. Ashton Reid Dr. (FSCA); GRAND CAYMAN: Boatswain Point (FSCA); 3 km W Colliers 19°21'N, 81°07'W (USNM); George Town (FSCA); George Town, UCCI (FSCA; RHTC); vicinity Gun Bay (FSCA; RHTC); forest 1.5 km S of Hutland 19°20'N, 81°13'W (USNM); Mastic Trail (FSCA; RHTC); North Side 19°21'N, 81°12'W (USNM); Queen Elizabeth II Botanic Park (FSCA); 0.7 mi. N Sand Bluff (RHTC); LITTLE CAYMAN: Coot Marsh (FSCA)

Tropicus sp.

GRAND CAYMAN: forest 1.5 km S Hutland 19°20'N, 81°13'W (USNM); North Side 19°21'N, 81°12'W (USNM)

HISTERIDAE*Acritus* sp. near *exiguus* (Erichson)

CAYMAN BRAC: Creek (FSCA); Major Donald Dr. at Bight Rd. (RHTC); Major Donald Dr., 0.6 km E jct. Ashton Reid Dr. (FSCA; RHTC); GRAND CAYMAN: no specific locality (FSCA); Mastic Trail (RHTC)

Acritus ignobilis Lewis

CAYMAN BRAC: Creek (FSCA)

Acritus sp. near *nigricornis* (Hoffman)

CAYMAN BRAC: Creek (FSCA)

Epiurus sp.

CAYMAN BRAC: Major Donald Dr., 0.6 km E jct. Ashton Reid Dr. (FSCA; RHTC); GRAND CAYMAN: North Side 19°21'N, 81°12'W (USNM)

Hypocaccus sp.

GRAND CAYMAN: Palmetto Point near Barkers 19°23'N, 81°22'W (USNM)

Teretrius sp.

CAYMAN BRAC: Sovereign Heights (FSCA); GRAND CAYMAN: Mastic Trail (FSCA)

Xerosaprinus sp.

GRAND CAYMAN: Boatswain Point (FSCA)

HYBOSORIDAE*Apalonychus waterhousei* Westwood (Fig. 15)

CAYMAN BRAC: Hemmington Rd. at Songbird Dr. (RHTC); GRAND CAYMAN: Queen Elizabeth II Botanic Park (FSCA); George Town, UCCI (RHTC)

Hybosorus illigeri Reiche

CAYMAN BRAC: Brac Paradise Subdivision (FSCA); Hemmington Rd. at Songbird Dr. (RHTC); Major Donald Dr., 0.4 km E jct. Ashton Reid Dr. (FSCA); GRAND CAYMAN: Boatswain Point (FSCA); Mastic Trail (FSCA); Queen Elizabeth II Botanic Park (FSCA; RHTC); George Town, UCCI (FSCA; RHTC); LITTLE CAYMAN: 0.3 km SE Spot Bay (FSCA)

HYDRAENIDAE*Hydraena* sp.

GRAND CAYMAN: North Side, 19°21'N, 81°12'W (USNM)

Ochthebius attritus LeConte

GRAND CAYMAN: North Side, 19°21'N, 81°12'W (USNM)

HYDROCHIDAE*Hydrochus excavatus* LeConte

GRAND CAYMAN: Newlands (FSCA); Queen Elizabeth II Botanic Park (FSCA)

Hydrochus sp.

GRAND CAYMAN: 3 km W Colliers, 19°21'N, 81°07'W (USNM)

HYDROPHILIDAE*Berosus exiguus* (Say)

GRAND CAYMAN: West end, Georgetown (THNM, USNM); Queen Elizabeth II Botanic Park (FSCA); LITTLE CAYMAN: South coast, South Town (THNM, USNM)

Berosus infuscatus (LeConte)

CAYMAN BRAC: West end, Cotton-tree Land (THNM, USNM); GRAND CAYMAN, no specific locality (USNM, IJC); 3 km W Colliers, 19°21'N, 81°07'W (USNM); East end, East End (THNM, USNM); West end, Georgetown (THNM, USNM); George Town, UCCI campus (FSCA); Georgetown (3 mi. N.) (USNM); Georgetown (4 mi. N.) (USNM); North Side, 19°21'N, 81°12'W (USNM); S. coast, nr. Pedro Castle (THNM, USNM); Queen Elizabeth II Botanic Park (FSCA); N. coast, Rum Point (THNM, USNM); LITTLE CAYMAN: Interior, West end, 'Duck Hole' (THNM, USNM); East end, Interior, Muddyfoot's Area (THNM, USNM); South coast, South Town (THNM, USNM)

Berosus stribalus d'Orchymont

CAYMAN BRAC: West end, Cotton-tree Land (THNM, USNM); N. coast, Earthquake Hole (THNM, USNM); GRAND CAYMAN: no specific locality (USNM, IJC); 3 km W Colliers, 19°21'N, 81°07'W (USNM); East end, East End (THNM, USNM); West end, Georgetown (THNM, USNM); Georgetown (3 mi. N.) (USNM); 1.5 km S Hutland, 19°20'N, 81°13'W (USNM); North Side, 19°21'N, 81°12'W (USNM); S. coast, nr. Pedro Castle (THNM, USNM); South coast, South Sound (THNM, USNM); West end, West Bay area, Hell (THNM, USNM); W. Bay B.C.C. (USNM); LITTLE CAYMAN: East end, Interior, Muddyfoot's Area (THNM, USNM); South coast, South Town (THNM, USNM)

Cercyon floridanus Smetana

GRAND CAYMAN: 3 km W Colliers, 19°21'N, 81°07'W (USNM)

Cercyon praetextatus (Say)

GRAND CAYMAN: South coast, South Sound (THNM, USNM)

Cercyon sp. 1

CAYMAN BRAC: Major Donald Dr., .6 km. E jct. Ashton Reid Dr. (FSCA)

Cercyon sp. 2

GRAND CAYMAN: Queen Elizabeth II Botanic Park (FSCA); George Town (FSCA)

Cercyon sp. 3

GRAND CAYMAN: no specific locality (FSCA)

Derallus altus (LeConte)

GRAND CAYMAN: no specific locality (FSCA)

Enochrus (Lumetus) hamiltoni (Horn)

GRAND CAYMAN: North Side (Short, 2004); no specific locality (FSCA); LITTLE CAYMAN: South coast, South Town (THNM, USNM)

Enochrus (Methydrus) ochraceus (Melsheimer)

GRAND CAYMAN: 3 mi. W Colliers (Short, 2004); West end, Georgetown (THNM, USNM); Queen Elizabeth II Botanic Park (FSCA) South coast, South Sound (THNM, USNM); LITTLE CAYMAN: South coast, South Town (THNM, USNM)

Enochrus (Methydrus) pygmaeus (Fabricius)

GRAND CAYMAN: : 4 mi. N George Town (Short, 2004); 1.5 mi. S Hutland (Short, 2004); 3 km. W Colliers (Short, 2004); 3 mi. N George Town (Short, 2004); West end, Georgetown (THNM, USNM); George Town, UCCI campus (FSCA); North Side (Short, 2004); N. coast, North Side, (THNM, USNM); Queen Elizabeth II Botanic Park (FSCA); South coast, South Sound (THNM, USNM); LITTLE CAYMAN: East end, Interior, Muddyfoot's Area (THNM, USNM); South coast, South Town (THNM, USNM)

Enochrus (Methydrus) pseudochraceus Gundersen

GRAND CAYMAN: West end, Georgetown (THNM, USNM); East end, East End (THNM, USNM); 1.5 mi. S Hutland (Short, 2004); N. coast, North Side, (THNM, USNM); N. coast, Rum Point (THNM, USNM); South coast, South Sound (THNM, USNM)

Enochrus sp.

GRAND CAYMAN: no specific locality (FSCA)

Helochares sallaei Sharp

GRAND CAYMAN: Queen Elizabeth II Botanic Park (FSCA)

Helochares sp.

GRAND CAYMAN: West end, Georgetown (THNM, USNM)

Hydrobiomorpha casta (Say)

GRAND CAYMAN: Boatswain Point (FSCA); Georgetown (USNM)

Hydrophilus ater Olivier

GRAND CAYMAN: N. coast, English Cisterns (THNM, USNM); S. coast, Newlands (THNM, USNM); N. coast, North Side, (THNM, USNM); South coast, South Sound (THNM, USNM)

Hydrophilus ensifer Brulle

GRAND CAYMAN: George Town (FSCA); Queen Elizabeth II Botanic Park (FSCA)

Hydrophilus insularis Castelnau

CAYMAN BRAC: West end, Cotton-tree Land (THNM, USNM); GRAND CAYMAN: no specific locality (USNM, IJC); East end, interior, Boiling Hole (THNM, USNM); 3 km W Colliers, 19°21'N, 81°07'W (USNM); East End Village (Flowers and Klenke, 1976); N. coast, English Cisterns (THNM, USNM); Georgetown (USNM); Queen Elizabeth II Botanic Park (FSCA); LITTLE CAYMAN: Power Plant Well (USNM)

Paracymus cf. confluens Wooldridge

GRAND CAYMAN: Queen Elizabeth II Botanic Park (FSCA)

Paracymus confluens Wooldridge

GRAND CAYMAN: Queen Elizabeth II Botanic Park (FSCA)

Paracymus lodingi (Fall)

GRAND CAYMAN: Boatswain Point (FSCA); 3 km W Colliers, 19°21'N, 81°07'W (USNM); West end, Georgetown (THNM, USNM); 1.5 km S Hutland, 19°20'N, 81°13'W (USNM); North Side, 19°21'N, 81°12'W (USNM); South coast, South Sound (THNM, USNM)

Paracymus nanus (Fall)

GRAND CAYMAN: Boatswain Point (FSCA); 3 km W Colliers, 19°21'N, 81°07'W (USNM); West end, Georgetown (THNM, USNM); 1.5 km S Hutland, 19°20'N, 81°13'W (USNM); North Side, 19°21'N, 81°12'W (USNM); S. coast, nr. Pedro Castle (THNM, USNM); South coast, South Sound (THNM, USNM); LITTLE CAYMAN: South coast, South Town (THNM, USNM)

Phaenonotum sp.

GRAND CAYMAN: Queen Elizabeth II Botanic Park (FSCA)

Sphaeridium sp.

CAYMAN BRAC: Hemmington Rd. at Songbird Dr. (FSCA)

Tropisternus lateralis lateralis (Fabricius)

CAYMAN BRAC: West end, Cotton-tree Land (THNM, USNM); N. coast, Stakes Bay (THNM, USNM); GRAND CAYMAN: no specific locality (USNM, IJC); East end, interior, Boiling Hole (THNM, USNM); 3 km W Colliers, 19°21'N, 81°07'W (USNM); East end, East End (THNM, USNM); N. coast, English Cisterns (THNM, USNM); Georgetown (PMIC); N. coast, North Side, Hut Road (THNM, USNM); S. coast, Newlands (THNM, USNM); S. coast, nr. Pedro Castle (THNM, USNM); Queen Elizabeth II Botanic Park (FSCA); West Bay (FSCA) Spotts (FSCA); West Bay (FSCA); West end, West Bay area, Hell (THNM, USNM)

Tropisternus mergus (Say)

GRAND CAYMAN: Georgetown (PMIC); North Side, 19°21'N, 81°12'W (USNM)

Tropisternus quadristriatus (Horn)

CAYMAN BRAC: West end, Cotton-tree Land (THNM, USNM); GRAND CAYMAN: N. coast, English Cisterns (THNM, USNM); 4 mi. N Georgetown (USNM); North Side, Bouse's Pond

(THNM, USNM); Queen Elizabeth II Botanic Park (FSCA); LITTLE CAYMAN: South coast, South Town (THNM, USNM)

LAEMOPHLOEIDAE

Charaphloeus bituberculatus (Reitter) (Fig. 18)

CAYMAN BRAC: Brac Paradise Subdivision (FSCA; RHTC); Hemmington Rd. at Songbird Dr. (FSCA; RHTC); Creek (FSCA); Major Donald Dr., 0.6 km E jct. Ashton Reid Dr. (FSCA; RHTC); GRAND CAYMAN: Mastic Trail (FSCA; RHTC); Queen Elizabeth II Botanic Park (FSCA); LITTLE CAYMAN: North Coast Rd., 0.1 km W jct. Olivine Kirk Rd. (FSCA)

Cryptolestes ferrugineus (Stephens)

GRAND CAYMAN: no specific locality (FSCA)

Cryptolestes klapperichi Lefkovitch

CAYMAN BRAC: Creek (FSCA); GRAND CAYMAN: no specific locality (FSCA)

Cryptolestes pusillus (Schönherr)

CAYMAN BRAC: Creek (FSCA)

Cryptolestes uncicornis (Reitter)

CAYMAN BRAC: Major Donald Dr., 0.4 km E jct. Ashton Reid Dr. (FSCA; RHTC); Major Donald Dr., 0.6 km E jct. Ashton Reid Dr. (FSCA; RHTC); GRAND CAYMAN: no specific locality (FSCA); LITTLE CAYMAN: 0.3 km SE Spot Bay (RHTC); North Coast Rd., 0.1 km W Olivine Kirk Rd. (FSCA)

Laemophloeus lecontei Grouvelle

CAYMAN BRAC: Paradise Brac Subdivision (FSCA); Brac Parrot Reserve (FSCA); Hemmington Rd. at Songbird Dr. (RHTC); Major Donald Dr., 0.6 km E jct. Ashton Reid Dr. (RHTC); GRAND CAYMAN: Mastic Trail (FSCA); LITTLE CAYMAN: North Coast Rd., 0.1 km W jct. Olivine Kirk Rd. (FSCA)

Lathropus parvulus Grouvelle

CAYMAN BRAC: Major Donald Dr., 0.6 km E jct. Ashton Reid Dr., (FSCA); GRAND CAYMAN: no specific locality (FSCA)

Parandrita permixtus (Grouvelle)

CAYMAN BRAC: Creek (FSCA)

Placonotus majus Lefkovitch

CAYMAN BRAC: Creek (FSCA); Hemmington Rd. at Songbird Dr. (FSCA; RHTC); Major Donald Dr., 0.4 km E jct. Ashton Reid Dr. (FSCA); Major Donald Dr., 0.6 km E jct. Ashton Reid Dr. (FSCA; RHTC); Major Donald Dr., 0.4 km E jct. Bluff Rd. (FSCA); GRAND CAYMAN: no specific locality (FSCA); LITTLE CAYMAN: North Coast Rd., 0.1 km E jct. Olivine Kirk Rd. (FSCA)

Placonotus politissimus (Wollaston)

CAYMAN BRAC: Creek (FSCA); Hemmington Rd. at Songbird Dr. (FSCA; RHTC); Major Donald Dr., 0.4 km E jct. Ashton Reid Dr. (FSCA; RHTC); Major Donald Dr., 0.6 km E jct. Ashton Reid Dr. (FSCA; RHTC); GRAND CAYMAN: Mastic Trail (FSCA)

Rhabdophloeus sp.

CAYMAN BRAC: Major Donald Dr., 0.6 km E jct. Ashton Reid Dr. (FSCA; RHTC); GRAND CAYMAN: Mastic Trail (FSCA); LITTLE CAYMAN: North Coast Rd., 0.1 km W Olivine Kirk Rd. (FSCA)

LAMPYRIDAE

Pyractomena gamma (Jacquelin du Val)

GRAND CAYMAN: George Town (FSCA); Northwest Point (FSCA)

LATRIDIIDAE

Cartodere sp.

CAYMAN BRAC: Hemmington Rd. at Songbird Dr. (FSCA; RHTC); Major Donald Dr., 0.6 km E jct. Ashton Reid Dr. (FSCA)

Corticaria sp.

CAYMAN BRAC: Hemmington Rd. at Songbird Dr. (FSCA; RHTC); GRAND CAYMAN: no specific locality (FSCA)

Melanophthalma sp. 1

CAYMAN BRAC: Brac Paradise Subdivision (RHTC); Bight Rd., Brac Parrot Reserve (RHTC); Hemmington Rd. at Songbird Dr. (RHTC); Major Donald Dr., 0.4 km E jct. Ashton Reid Dr. (FSCA); Major Donald Dr., 0.6 km E jct. Ashton Reid Dr. (FSCA; RHTC); South Side Rd. west (RHTC); Sovereign Heights (RHTC); GRAND CAYMAN: Mastic Trail (FSCA; RHTC); Queen Elizabeth II Botanic Park (RHTC); LITTLE CAYMAN: North Coast Rd., 0.1 km W jct. Olivine Kirk Rd. (RHTC)

Melanophthalma sp. 2

CAYMAN BRAC: Brac Paradise Subdivision (FSCA; RHTC); Bight Rd., Brac Parrot Reserve (FSCA; RHTC); Hemmington Rd. at Songbird Dr. (FSCA); Major Donald Dr., 0.4 km E jct. Ashton Reid Dr. (FSCA); Major Donald Dr., 0.6 km E jct. Ashton Reid Dr. (FSCA; RHTC); South Side Road west (RHTC); GRAND CAYMAN: no specific locality (FSCA); LITTLE CAYMAN: North Coast Rd., 0.1 km W Olivine Kirk Rd. (FSCA; RHTC)

Melanophthalma sp. 3

CAYMAN BRAC: Bight Rd., Brac Parrot Reserve (FSCA; RHTC); Creek (FSCA); Hemmington Rd. at Songbird Dr. (FSCA); Major Donald Dr., 0.4 km E jct. Ashton Reid Dr. (FSCA; RHTC); Major Donald Dr., 0.6 km E jct. Ashton Reid Dr. (FSCA; RHTC); South Side Road west (RHTC); Sovereign Heights (FSCA; RHTC); GRAND CAYMAN: Mastic Trail (FSCA; RHTC); Queen Elizabeth II Botanic Park (FSCA); LITTLE CAYMAN: North Coast Rd., 0.1 km W jct. Olivine Kirk Rd. (FSCA); 0.3 km SE Spot Bay (FSCA)

LEIODIDAE*Zeadalopus* n. sp.

GRAND CAYMAN: Mastic Trail (RHTC)

LIMNICHIDAE*Eulimnichus* sp.

CAYMAN BRAC: Creek (FSCA); GRAND CAYMAN: no specific locality (FSCA)

Throscinus aethiops Darlington

CAYMAN BRAC: Hemmington Rd. at Songbird Dr. (FSCA); GRAND CAYMAN: 2 mi. N Georgetown (USNM); North Side, 19°21'N, 81°12'W (USNM)

MELOIDAE*Nemognatha punctulata* LeConte

GRAND CAYMAN: no specific locality (Selander and Bouseman 1960)

MELYRIDAE*Melyrodes floridana* Casey (Fig. 16)

CAYMAN BRAC: Hemmington Rd. at Songbird Dr. (FSCA)

MONOTOMATIDAE*Bactridium* sp.

CAYMAN BRAC: Brac Paradise Subdivision (FSCA; RHTC); Bight Rd., Brac Parrot Reserve (FSCA); Creek (FSCA); Hemmington Rd. at Songbird Dr. (FSCA; RHTC); Major Donald Dr., 0.4 km E jct. Bluff Rd. (FSCA); Major Donald Dr., 0.4 km E jct. Ashton Reid Dr. (RHTC); Major Donald Dr., 0.6 km E jct. Ashton Reid Dr. (FSCA; RHTC); GRAND CAYMAN: Mastic Trail (FSCA; RHTC); LITTLE CAYMAN: North Coast Rd., 0.1 km E jct. Olivine Kirk Rd. (FSCA)

Europs sp.

CAYMAN BRAC: Creek (FSCA); Major Donald Dr., 0.6 km E jct. Ashton Reid Dr. (FSCA); GRAND CAYMAN: 3 km W Colliers 19°21'N, 81°07'W (USNM); forest 1.5 km S Hutland 19°20'N, 81°13'W (USNM); North Side 19°21'N, 81°12'W (USNM); Queen Elizabeth II Botanic Park

(FSCA); LITTLE CAYMAN: North Coast Rd., 0.1 km E jct. Olivine Kirk Rd. (FSCA; RHTC)

Monotoma sp. 1

CAYMAN BRAC: Creek (FSCA); Hemmington Rd. at Songbird Dr. (FSCA; RHTC); Major Donald Dr., 0.6 km E jct. Ashton Reid Dr. (FSCA); GRAND CAYMAN: Mastic Trail (RHTC); North Side 19°21'N, 81°12'W (USNM)

Monotoma sp. 2

CAYMAN BRAC: Hemmington Rd. at Songbird Dr. (FSCA; RHTC); GRAND CAYMAN: no specific locality (FSCA)

MORDELLIDAE

Gliptostenodes sp. 1

CAYMAN BRAC: Hemmington Rd. at Songbird Dr. (FSCA); Major Donald Dr., 0.6 km E jct. Ashton Reid Dr. (FSCA); LITTLE CAYMAN: North Coast Rd., 0.1 km E jct. Olivine Kirk Rd. (FSCA)

Gliptostenodes sp. 2

CAYMAN BRAC: Brac Paradise Subdivision (FSCA); Brac Parrot Reserve (FSCA; RHTC); Lighthouse Point (RHTC); GRAND CAYMAN: Georgetown, UCCI (FSCA); Queen Elizabeth II Botanic Park (FSCA); LITTLE CAYMAN: North Coast Rd., 0.1 km E jct. Olivine Kirk Rd. (FSCA)

Gliptostenodes sp. 3

CAYMAN BRAC: Brac Parrot Reserve (FSCA); Hemmington Rd. at Songbird Dr. (FSCA); Spot Bay, nr. Peter's Cave (FSCA; RHTC); GRAND CAYMAN: Georgetown, UCCI (FSCA); LITTLE CAYMAN: North Coast Rd., 0.1 km E jct. Olivine Kirk Rd. (FSCA)

Mordella sp.

CAYMAN BRAC: Long Beach (RHTC)

MYCETOPHAGIDAE

Berginus sp.

CAYMAN BRAC: Brac Parrot Reserve (RHTC); Lighthouse Point (RHTC); Major Donald Dr., 0.6 km E jct. Ashton Reid Dr. (RHTC); South Side Road west (RHTC); Sovereign Heights (FSCA); LITTLE CAYMAN: 0.3 km SE Spot Bay (RHTC)

Typhaea stercorea (Linnaeus)

CAYMAN BRAC: Major Donald Dr., 0.4 km E jct. Ashton Reid Dr. (FSCA); Major Donald Dr., 0.4 km E jct. Bluff Rd. (FSCA); GRAND CAYMAN: no specific locality (FSCA)

MYCTERIDAE

Hemipeplus marginipennis (LeConte) (Fig. 19)

CAYMAN BRAC: South Side Road west (FSCA; RHTC); GRAND CAYMAN: Queen Elizabeth II Botanic Park (FSCA); LITTLE CAYMAN: Sandy Point (FSCA)

NITIDULIDAE

Carpophilus dimidiatus (Fabricius)

CAYMAN BRAC: Creek (FSCA); GRAND CAYMAN: no specific locality (FSCA)

Stelidota ruderata Erichson

CAYMAN BRAC: Creek (FSCA)

NOTERIDAE

Hydrocanthus oblongus Sharp

GRAND CAYMAN: Queen Elizabeth II Botanic Park (FSCA); S. coast, South Sound (THNM, USNM)

Mesonoterus addendus (Blatchley)

GRAND CAYMAN: no specific locality (FSCA)

Notomicrus sharpi Balfour-Browne

GRAND CAYMAN: North Side, 19°21'N, 81°12'W (USNM); Queen Elizabeth II Botanic Park (FSCA); S. coast, South Sound (THNM, USNM)

Suphisellus binotatus (Fleutiaux and Sallé)

GRAND CAYMAN: Queen Elizabeth II Botanic Park (FSCA)

OEDEMERIDAE

Oxycopsis barberi Arnett

GRAND CAYMAN: no specific locality (FSCA)

Oxycopsis falli (Blatchley)

CAYMAN BRAC: West End Point (FSCA); GRAND CAYMAN: vicinity Gun Bay (FSCA); LITTLE CAYMAN: 2.4 km E Blossom Village (RHTC); 0.3 km E Coot Marsh (RHTC); North Coast Rd., 0.1 km E jct. Olivine Kirk Rd. (FSCA); 0.3 km SE Spot Bay (FSCA; RHTC)

Oxycopsis mcdonaldi (Arnett)

CAYMAN BRAC: Brac Paradise Subdivision (FSCA; RHTC); Brac Parrot Reserve (FSCA); Hemmington Rd. at Songbird Dr. (FSCA); Major Donald Dr., 0.6 km E jct. Ashton Reid Dr. (FSCA); GRAND CAYMAN: Mastic Trail (FSCA; RHTC); Queen Elizabeth II Botanic Park (FSCA; RHTC); West Bay (FSCA); LITTLE CAYMAN: Coot Marsh (FSCA); North Coast Rd., 0.1 km E jct. Olivine Kirk Rd. (FSCA);

Oxycopsis testaceicollis (Duval) [**Note:** compared with specimens in FSCA from Cuba identified by R. H. Arnett, Jr.]

CAYMAN BRAC: Long Beach (RHTC); South Side Road west (RHTC); GRAND CAYMAN: 1.6 mi. W East End (RHTC); LITTLE CAYMAN: 0.3 km SE Spot Bay (RHTC)

Oxycopsis vittata (Fall)

CAYMAN BRAC: Brac Parrot Reserve (FSCA); Hemmington Rd. at Songbird Dr. (FSCA); South Side Road west (RHTC); West End Point (RHTC); GRAND CAYMAN: George Town, UCCI (FSCA); vicinity Gun Bay (FSCA); West Bay (FSCA); LITTLE CAYMAN: Blossom Village (RHTC); Coot Marsh (FSCA); E of Tarpon Lake (RHTC); 0.3 km E Coot Marsh (RHTC); North Coast Rd., 0.1 km E jct. Olivine Kirk Rd. (FSCA); 0.3 km SE Spot Bay (FSCA)

Oxycopsis sp. 1

GRAND CAYMAN: Mastic Trail (FSCA)

Oxycopsis sp. 2

GRAND CAYMAN: George Town, UCCI (FSCA); vicinity Gun Bay (FSCA)

Oxycopsis sp. 3

CAYMAN BRAC: Brac Paradise Subdivision (FSCA); Bight Rd., Brac Parrot Reserve (RHTC); Great Cave (RHTC); South Side Road west (RHTC); Spot Bay, nr. Peter's Cave (RHTC)

OXYCORYNIDAE

Rhopalotria dimidiata Chevrolat

GRAND CAYMAN: Queen Elizabeth II Botanic Park (FSCA); Salina Reserve 19°21'N 81°08'W (USNM)

PASSANDRIDAE

Catogenus cayman Slipinski

GRAND CAYMAN: west end of George Town (Slipinski 1989)

Taphrosclidia linearis (LeConte)

GRAND CAYMAN: Boatswain Point (FSCA); George Town, UCCI (FSCA); West Bay (FSCA)

PHALACRIDAE

Acylomus sp. 1

GRAND CAYMAN: Queen Elizabeth II Botanic Park (FSCA); 1.6 mi W East End (FSCA; RHTC); George Town, UCCI (FSCA; RHTC)

Acylomus sp. 2

GRAND CAYMAN: no specific locality (FSCA)

Acylomus sp. 3

CAYMAN BRAC: Bight Rd. at Major Donald Dr. (FSCA); Brac Parrot Reserve (RHTC)

Acylomus sp. 4

GRAND CAYMAN: Mastic Trail (FSCA)

Apallodes sp.

GRAND CAYMAN: Mastic Trail (FSCA; RHTC)

Litostilbus testaceus (Fabricius)

CAYMAN BRAC: Bight Rd., Brac Parrot Reserve (FSCA); Brac Paradise Subdivision (FSCA); Hemmington Road at Songbird Drive (FSCA); Major Donald Dr., 0.4 km E jct. Ashton Reid Dr. (FSCA); Major Donald Dr., 0.6 km E jct. Ashton Reid Dr. (RHTC); Spot Bay, nr. Peter's Cave (FSCA); GRAND CAYMAN: Mastic Trail (FSCA; RHTC); LITTLE CAYMAN: 0.3 km SE Spot Bay (FSCA); North Coast Road, 0.1 km W Olivine Kirk Dr. (FSCA)

Olibroporus punctatus Casey

CAYMAN BRAC: Major Donald Dr., 0.6 km E jct. Ashton Reid Dr. (FSCA); GRAND CAYMAN: Mastic Trail (FSCA); Queen Elizabeth II Botanic Park (FSCA)

Stilbus sp. 1

GRAND CAYMAN: Queen Elizabeth II Botanic Park (FSCA)

Stilbus sp. 2

GRAND CAYMAN: no specific locality (FSCA)

Xanthocomus rutilans (Casey)

CAYMAN BRAC: Brac Parrot Reserve (RHTC); Major Donald Dr., 0.4 km E jct. Bluff Rd. (FSCA); GRAND CAYMAN: no specific locality (FSCA)

PTILIIDAE*Acrotrichis* sp.

CAYMAN BRAC: Brac Paradise Subdivision (FSCA)

Actidium sp.

CAYMAN BRAC: Creek (FSCA)

Bambara frosti (Dybas)

CAYMAN BRAC: Brac Paradise Subdivision (FSCA)

Bambara sp.

CAYMAN BRAC: Creek (FSCA)

Nephanes titan (Newman)

CAYMAN BRAC: Creek (FSCA)

Smicrus sp.

GRAND CAYMAN: Queen Elizabeth II Botanic Park (FSCA)

PTILODACTYLIDAE*Ptilodactyla* sp.

GRAND CAYMAN: no specific locality (FSCA)

PTINIDAE*Caenocara* sp.

CAYMAN BRAC: Brac Parrot Reserve (RHTC); Long Beach (RHTC); GRAND CAYMAN: vicinity Gun Bay (FSCA); Mastic Trail (RHTC)

Cryptorama vorticale Fall

CAYMAN BRAC: Brac Paradise Subdivision (FSCA; RHTC); Bight Rd., Brac Parrot Reserve (FSCA); Hemmington Rd. at Songbird Dr. (FSCA; RHTC); Major Donald Dr., 0.4 km E jct. Ashton Reid Dr. (FSCA); Major Donald Dr., 0.6 km E jct. Ashton Reid Dr. (FSCA; RHTC); GRAND CAYMAN: Queen Elizabeth II Botanic Park (FSCA); LITTLE CAYMAN: Coot Marsh (FSCA); North Coast Rd., 0.1 km W Olivine Kirk Dr. (FSCA)

Cryptorama vorticale Fall or near

GRAND CAYMAN: George Town, UCCI (RHTC); vicinity Gun Bay (RHTC); Mastic Trail (RHTC); LITTLE CAYMAN: 0.3 km SE Spot Bay (RHTC)

Cryptorama sp. 1

CAYMAN BRAC: Brac Paradise Subdivision (FSCA); Bight Rd., Brac Parrot Reserve (FSCA; RHTC); Hemmington Rd. at Songbird Dr. (FSCA); Long Beach (RHTC); Major Donald Dr., 0.6 km E jct. Ashton Reid Dr. (FSCA; RHTC); GRAND CAYMAN: Rum Point (RHTC); 0.7 mi. N Sand Bluff (RHTC); LITTLE CAYMAN: North Coast Rd., 0.1 km W jct. Olivine Kirk Dr. (FSCA)

Cryptorama sp. 2

CAYMAN BRAC: Brac Paradise Subdivision (FSCA; RHTC); Bight Rd., Brac Parrot Reserve (FSCA); Creek (FSCA); Hemmington Rd. at Songbird Dr. (FSCA; RHTC); Major Donald Dr., 0.6 km E jct. Ashton Reid Dr. (FSCA; RHTC); Major Donald Dr., 0.4 km E jct. Bluff Rd. (FSCA); GRAND CAYMAN: Mastic Trail (FSCA; RHTC); Queen Elizabeth II Botanic Park (FSCA)

Cryptorama sp. 3

LITTLE CAYMAN: 0.3 km SE Spot Bay (RHTC)

Hadrotinus sp.

CAYMAN BRAC: Brac Paradise Subdivision (FSCA; RHTC); Great Cave (RHTC); Hemmington Rd. at Songbird Dr. (FSCA; RHTC); Major Donald Dr., 0.6 km E jct. Ashton Reid Dr. (FSCA); GRAND CAYMAN: vicinity Gun Bay (FSCA); Mastic Trail (FSCA); Queen Elizabeth II Botanic Park (FSCA)

Microzogus sp.

CAYMAN BRAC: Bight Rd. at Major Donald Dr. (FSCA; RHTC); Brac Parrot Reserve (RHTC); Major Donald Dr., 0.4 km E jct. Ashton Reid Dr. (FSCA); West End Point (RHTC); GRAND CAYMAN: 0.7 mi. N Sand Bluff (RHTC); LITTLE CAYMAN: Guy Banks Rd., 2.4 km E Blossom Village (RHTC)

Nesothes sp. 1

CAYMAN BRAC: Brac Paradise Subdivision (FSCA; RHTC); Bight Rd., Brac Parrot Reserve (FSCA; RHTC); Creek (FSCA); Hemmington Rd. at Songbird Dr. (FSCA; RHTC); Major Donald Dr., 0.4 km E jct. Ashton Reid Dr. (FSCA; RHTC); Major Donald Dr., 0.6 km E jct. Ashton Reid Dr. (FSCA; RHTC); north shore bluff (RHTC); GRAND CAYMAN: Mastic Trail (FSCA; RHTC); LITTLE CAYMAN: North Coast Rd., 0.1 km W jct. Olivine Kirk Rd. (FSCA; RHTC); 0.3 km SE Spot Bay (FSCA; RHTC)

Nesothes sp. 2

CAYMAN BRAC: Major Donald Dr., 0.6 km E jct. Ashton Reid Dr. (FSCA; RHTC)

Petalium sp. 1

CAYMAN BRAC: Brac Paradise Subdivision (FSCA; RHTC); Hemmington Rd. at Songbird Dr. (FSCA; RHTC); Lighthouse Point (RHTC); Major Donald Dr., 0.4 km E jct. Ashton Reid Dr. (FSCA); Major Donald Dr., 0.6 km E jct. Ashton Reid Dr. (FSCA); GRAND CAYMAN: East End (RHTC); Mastic Trail (RHTC); Queen Elizabeth II Botanic Park (FSCA); LITTLE CAYMAN: North Coast Rd., 0.1 km W jct. Olivine Kirk Rd. (FSCA); 0.3 km SE Spot Bay (RHTC)

Petalium sp. 2

CAYMAN BRAC: Major Donald Dr., 0.6 km E jct. Ashton Reid Dr. (FSCA); GRAND CAYMAN: vicinity Gun Bay (FSCA; RHTC)

Petalium sp. 3

CAYMAN BRAC: Bight Rd., Brac Parrot Reserve (FSCA; RHTC); Great Cave (RHTC); Major Donald Dr., 0.6 km E jct. Ashton Reid Dr. (FSCA; RHTC); Major Donald Dr. 4 mi. E jct. Bluff Rd. (FSCA); GRAND CAYMAN: Queen Elizabeth II Botanic Park (FSCA); LITTLE CAYMAN: 0.3 km SE Spot Bay (FSCA)

Petalium sp. 4

CAYMAN BRAC: Brac Paradise Subdivision (FSCA; RHTC); Hemmington Rd. at Songbird Dr. (FSCA); Major Donald Dr., 0.6 km E jct. Ashton Reid Dr. (FSCA); GRAND CAYMAN: no specific locality

Protheca sp.

GRAND CAYMAN: Mastic Trail (FSCA)

Stegobium paniceum (Linnaeus)

CAYMAN BRAC: Creek (FSCA)

Trichodesma sp. 1

LITTLE CAYMAN: North Coast Rd., 0.1 km W Olivine Kirk Rd. (RHTC)

Trichodesma sp. 2

CAYMAN BRAC: Brac Paradise Subdivision (FSCA; RHTC); Bight Rd., Brac Parrot Reserve (FSCA; RHTC); Hemmington Rd. and Songbird Dr. (FSCA; RHTC); Major Donald Dr., 0.4 km E jct. Ashton Reid Dr. (FSCA); Major Donald Dr., 0.6 km E jct. Ashton Reid Dr. (FSCA; RHTC); Major Donald Dr., 0.4 km E jct. Bluff Rd. (FSCA); LITTLE CAYMAN: North Coast Rd., 0.1 km W jct. Olivine Kirk Rd. (FSCA; RHTC)

Tricornynus sp. 1

CAYMAN BRAC: Brac Paradise Subdivision (FSCA; RHTC); Brac Parrot Reserve (FSCA); Great Cave (RHTC); Hemmington Rd. at Songbird Dr. (FSCA; RHTC); Long Beach (FSCA; RHTC); Major Donald Dr., 0.6 km E jct. Ashton Reid Dr. (FSCA; RHTC); north shore bluff (RHTC); Stake Bay (RHTC); West End Point (FSCA; RHTC); GRAND CAYMAN: Mastic Trail (FSCA; RHTC); LITTLE CAYMAN: 0.3 km E Coot Marsh (RHTC); Guy Banks Rd., 2.4 km E Blossom Village (FSCA); North Coast Rd., 0.1 km W jct. Olivine Kirk Rd. (FSCA; RHTC); Sand Point (RHTC); 0.3 km SE Spot Bay (FSCA; RHTC)

Tricornynus sp. 2

CAYMAN BRAC: Major Donald Dr., 0.4 km E jct. Ashton Reid Dr. (RHTC); GRAND CAYMAN: Mastic Trail (FSCA; RHTC); LITTLE CAYMAN: North Coast Rd., 0.1 km W jct. Olivine Kirk Rd. (FSCA)

Tricornynus sp. 3

CAYMAN BRAC: Hemmington Rd. at Songbird Dr. (FSCA)

Tricornynus sp. 4

CAYMAN BRAC: West End Point (RHTC)

Tricornynus sp. 5

CAYMAN BRAC: Brac Paradise Subdivision (FSCA; RHTC); Lighthouse Point (FSCA); Long Beach (FSCA; RHTC); West End Point (FSCA; RHTC); LITTLE CAYMAN: Guy Banks Rd., 2.4 km E Blossom Village (FSCA); North Coast Rd., 0.1 km W jct. Olivine Kirk Rd. (FSCA); 0.3 km SE Spot Bay (FSCA; RHTC)

Tricornynus sp. 6

GRAND CAYMAN: vicinity Gun Bay (FSCA)

Tricornynus sp. 7

CAYMAN BRAC: Hemmington Rd. at Songbird Dr. (FSCA; RHTC); Long Beach (RHTC)

Tricornynus sp. 8

LITTLE CAYMAN: North Coast Rd., 0.1 km W jct. Olivine Kirk Rd. (FSCA)

Xestobium or near, possibly *Plananobium* sp.

CAYMAN BRAC: Creek (FSCA); Lighthouse Point (RHTC); GRAND CAYMAN: 1.6 mi. W East End (FSCA; RHTC); GRAND CAYMAN: Queen Elizabeth II Botanic Park (RHTC); LITTLE CAYMAN: 0.3 km E Coot Marsh (RHTC)

RHYNCHITIDAE*Auletobius cubanus* Voss

CAYMAN BRAC: Hemmington Rd. at Songbird Dr. (FSCA; RHTC); Major Donald Dr., 0.6 km E jct. Ashton Reid Dr. (FSCA; RHTC); LITTLE CAYMAN: North Coast Road, 0.1 km W jct. Olivine Kirk Dr. (FSCA)

SALPINGIDAE*Inopeplus* sp.

CAYMAN BRAC: Brac Parrot Reserve (FSCA); Major Donald Rd., 0.6 km E jct. Ashton Reid Dr. (RHTC)

SCARABAEIDAE*Ataenius beattyi* Chapin

CAYMAN BRAC: Brac Paradise Subdivision (FSCA); Brac Parrot Reserve (FSCA); Hemmington Rd. and Songbird Dr. (FSCA); Major Donald Dr., 0.4 km E jct. Ashton Reid Dr. (FSCA); Major Donald Dr., 0.6 km E jct. Ashton Reid Dr. (FSCA); GRAND CAYMAN: no specific locality (FSCA)

Ataenius brevicollis Wollaston

GRAND CAYMAN: Queen Elizabeth II Botanic Park (FSCA)

Ataenius carinator Harold

GRAND CAYMAN: Queen Elizabeth II Botanic Park (FSCA)

Ataenius gracilis (Melsheimer)

GRAND CAYMAN: no specific locality (FSCA)

Ataenius heinikeni Wollaston

GRAND CAYMAN: 3 km W Colliers 19°21'N 81°07'W (USNM); George Town (FSCA)

Ataenius imbricatus (Melsheimer)

GRAND CAYMAN: no specific locality (FSCA)

Ataenius liogaster Bates

GRAND CAYMAN: 3 km W Colliers 19°21'N 81°07'W (USNM); George Town (FSCA); no specific locality (FSCA)

Ataenius peregrinator Harold

GRAND CAYMAN: North Side 19°18'N 81°12'W (USNM); no specific locality (FSCA)

Ataenius platensis Blanchard

CAYMAN BRAC: Major Donald Drive, 0.4 km E Jct. Ashton Reid Drive (FSCA)

Ataenius sp. (terminatus group)

CAYMAN BRAC: Brac Paradise Subdivision (FSCA); Brac Parrot Reserve (FSCA); GRAND CAYMAN: Mastic Trail (FSCA)

Ataenius scabrellus Schmidt

CAYMAN BRAC: Brac Paradise Subdivision (FSCA); Brac Parrot Reserve (FSCA); Hemmington Rd. and Songbird Dr. (FSCA); Maj. Donald Dr., 0.4km E Ashton Reid Dr. (FSCA); Maj. Donald Dr., 4km E Bluff Rd. (FSCA); GRAND CAYMAN: no specific locality (FSCA) (Askew (1994) reported "*Ataenius* nr. *miamii* Cartwright" without a specific locality; he was likely referring to this species)

Caymania nitidissima Ratcliffe and Cave

LITTLE CAYMAN: "Central Forest" (BMNH; Ratcliffe and Cave 2010); "Transect 2" (BMNH; Ratcliffe and Cave 2010); "Mid island ironshore/N of airstrip" (BCRC; Ratcliffe and Cave 2010)

Digitonthophagus gazella Fabricius

CAYMAN BRAC: Major Donald Dr., 0.6 km E jct. Ashton Reid Dr. (FSCA); Creek (FSCA); GRAND CAYMAN: no specific locality (FSCA)

Dyscinetus imitator Ratcliffe

CAYMAN BRAC: Brac Paradise Subdivision (RHTC); GRAND CAYMAN: Bodden Town (Ratcliffe and Cave 2010); George Town (Ratcliffe and Cave 2010); Queen Elizabeth II Botanic Park (FSCA; Ratcliffe and Cave 2010; RHTC); Hutland (1.5 km S) (Ratcliffe and Cave 2010); Mastic Trail (FSCA; Ratcliffe and Cave 2010); Prospect (Ratcliffe and Cave 2010); Savannah (Ratcliffe and Cave 2010); West Bay (Ratcliffe and Cave 2010)

Euphoria sepulcralis sepulcralis (Fabricius)

CAYMAN BRAC: Creek (FSCA); GRAND CAYMAN: Queen Elizabeth II Botanic Park (FSCA); George Town, UCCI (RHTC)

Gymnetis lanius (Linnaeus) (Fig. 14)

GRAND CAYMAN: Boatswain Point (FSCA); Queen Elizabeth II Botanic Park (FSCA); Frank Sound Road (FSCA; RHTC); George Town, UCCI (RHTC); Lower Valley (FSCA); Savannah (RHTC)

Labarrus pseudolividus (Balthasar)

CAYMAN BRAC: Major Donald Dr., 0.6 km E jct. Ashton Reid Dr. (FSCA); GRAND CAYMAN: no specific locality (FSCA); 3 km W Colliers 19°21'N 81°07'W (USNM)

Leiopsammodius malkini (Cartwright)

CAYMAN BRAC: Creek (FSCA); GRAND CAYMAN: Mastic Trail (RHTC); Queen Elizabeth II Botanic Park (FSCA)

Martineziana dutertrei (Chalumeau)

GRAND CAYMAN: George Town (FSCA)

Nialaphodius nigrita (Fabricius)

GRAND CAYMAN: 3 km W Colliers 19°21'N 81°07'W (USNM); George Town (FSCA)

Phileurus valgus antillarum Prell

CAYMAN BRAC: Major Donald Drive, 0.4 km E Jct. Ashton Reid Drive (FSCA; Ratcliffe and Cave 2010); Major Donald Drive, 0.6 km E Jct. Ashton Reid Drive (FSCA; Ratcliffe and Cave 2010; RHTC); Hemmington Road (FSCA; Ratcliffe and Cave 2010; RHTC); GRAND CAYMAN: Queen Elizabeth II Botanic Park (FSCA; Ratcliffe and Cave 2010); George Town, UCCI (FSCA; Ratcliffe and Cave 2010; RHTC); George Town (FSCA; Ratcliffe and Cave 2010); Mastic Trail (FSCA; Ratcliffe and Cave 2010); LITTLE CAYMAN: Central Forest (Ratcliffe and Cave 2010)

Phyllophaga caymanensis Sanderson (Fig. 15)

GRAND CAYMAN: Boatswain Point (FSCA); Boilers (Sanderson 1939); East End (Sanderson 1939); George Town (FSCA; Sanderson 1939); vicinity Gun Bay (FSCA; RHTC); Mastic Trail (FSCA; RHTC); North Side (Sanderson 1939); Queen Elizabeth II Botanic Park (FSCA; RHTC); South Sound (Sanderson 1939); West Bay (Sanderson 1939)

Phyllophaga n. sp.

CAYMAN BRAC: Brac Paradise Subdivision (FSCA); Brac Parrot Reserve (FSCA; RHTC); Hemmington Rd. at Songbird Dr. (FSCA; RHTC); Major Donald Drive, 0.4 km E Jct. Ashton Reid Drive (FSCA); Major Donald Dr., 0.6 km E jct. Ashton Reid Dr. (FSCA); Stake Bay (FSCA); LITTLE CAYMAN: North Coast Rd., 0.1 km W jct. Olivine Kirk Rd. (FSCA); 0.3 km SE Spot Bay (FSCA; RHTC)

Phyllophaga sp.

GRAND CAYMAN: no specific locality (FSCA)

Platytomus parvulus (Chevrolat)

CAYMAN BRAC: Creek (FSCA); GRAND CAYMAN: George Town, UCCI (RHTC)

Strategus caymani Ratcliffe

CAYMAN BRAC: Brac Parrot Reserve (FSCA; Ratcliffe and Cave 2010); Major Donald Drive, 0.6 km E jct. Ashton Reid Drive (FSCA; RHTC; Ratcliffe and Cave 2010); north coast Stakes Bay (Ratcliffe 1976); west end of Cotton-tree land (Ratcliffe 1976); LITTLE CAYMAN: south coast of South Town (Ratcliffe 1976)

Strategus oblongus (Palisot de Beauvois)

CAYMAN BRAC: Brac Paradise Subdivision (FSCA; Ratcliffe and Cave 2010); GRAND CAYMAN: George Town (FSCA; Ratcliffe and Cave 2010); Mastic Trail (FSCA; Ratcliffe and Cave 2010); west end of George Town (Ratcliffe 1976)

Strategus talpa (Fabricius)

GRAND CAYMAN: George Town (FSCA; Ratcliffe and Cave 2010)

Tomarus adoceteus Ratcliffe and Cave

GRAND CAYMAN: George Town (BCRC; FSCA; Ratcliffe and Cave 2010); LITTLE CAYMAN: Pirates' Point (BMNH; Ratcliffe and Cave 2010)

Tomarus cuniculus (Fabricius)

GRAND CAYMAN: Boatswain Point, Lime Tree Estate (FSCA; Ratcliffe and Cave 2010); Queen Elizabeth II Botanic Park (FSCA; Ratcliffe and Cave 2010); Mastic Trail (FSCA; Ratcliffe and Cave 2010)

SCIRTIDAE*Cyphon* spp.

GRAND CAYMAN: Queen Elizabeth II Botanic Park (FSCA); Mastic Trail (FSCA); LITTLE CAYMAN: North Coast Rd., 0.1 km W jct. Olivine Kirk Rd. (FSCA); 0.3 km SE Spot Bay (FSCA)

Ora troberti (Guérin-Ménéville)

GRAND CAYMAN: East End (FSCA); Queen Elizabeth II Botanic Park (FSCA; RHTC); West Bay (FSCA)

Scirtes oblongus Guérin-Ménéville

GRAND CAYMAN: Queen Elizabeth II Botanic Park (FSCA; RHTC)

Scirtes sp. 2

GRAND CAYMAN: Frank Sound Rd. (RHTC); Mastic Trail (RHTC); Queen Elizabeth II Botanic Park (RHTC); Rum Point (RHTC)

Scirtes sp. 4

GRAND CAYMAN: Mastic Trail (RHTC)

Scirtes sp.

CAYMAN BRAC: Brac Paradise Subdivision (FSCA); GRAND CAYMAN: George Town, UCCI (FSCA); Mastic Trail (FSCA; RHTC); Queen Elizabeth II Botanic Park (FSCA; RHTC)

SCRAPTIIDAE*Anaspis* sp.

CAYMAN BRAC: Bight Rd., Brac Parrot Reserve (FSCA); Creek (FSCA); Hemmington Rd. at Songbird Dr. (FSCA; RHTC); Major Donald Dr., 0.6 km E jct. Ashton Reid Dr. (FSCA; RHTC); GRAND CAYMAN: vicinity Gun Bay (FSCA)

SILVANIDAE*Ahasverus* sp.

CAYMAN BRAC: Brac Parrot Reserve (FSCA); Hemmington Rd. at Songbird Dr. (RHTC); Major Donald Dr., 0.4 km E jct. Ashton Reid Dr. (FSCA; RHTC); Major Donald Dr., 0.6 km E jct. Ashton Reid Dr. (RHTC); GRAND CAYMAN: Mastic Trail (FSCA); LITTLE CAYMAN: North Coast Rd., 0.1 km W jct. Olivine Kirk Rd. (FSCA)

Cathartosilvanus opaculus (LeConte)

CAYMAN BRAC: Brac Parrot Reserve (FSCA); Hemmington Rd. at Songbird Dr. (RHTC); Major Donald Dr., 0.4 km E jct. Ashton Reid Dr. (FSCA; RHTC); Major Donald Dr., 0.6 km E jct. Ashton Reid Dr. (FSCA; RHTC); GRAND CAYMAN: 3 km W Colliers 19°21'N, 81°07'W (USNM); LITTLE CAYMAN: North Coast Rd., 0.1 km W jct. Olivine Kirk Rd. (FSCA)

Cathartus quadricollis (Guerin-Ménéville)

GRAND CAYMAN: 1 km W Bodden Town 19°17'N 81°16'W (USNM)

Monanus concinnulus (Walker)

CAYMAN BRAC: Creek (FSCA); GRAND CAYMAN: no specific locality (FSCA)

Silvanoprus scuticollis (Walker)

GRAND CAYMAN: no specific locality (FSCA)

SPHINDIDAE*Carinosphindus* n. sp.

GRAND CAYMAN: Mastic Trail (RHTC)

STAPHYLINIDAEnear *Actiastes* sp.

CAYMAN BRAC: Hemmington Rd. at Songbird Dr. (Frank et al. 2011; FSCA; RHTC); Major Donald Dr., 0.4 km E jct. Ashton Reid Dr. (Frank et al. 2011; RHTC); Major Donald Dr., 0.6 km E jct. Ashton Reid Dr. (Frank et al. 2011; FSCA; RHTC)

Adinopsis myllaenoides (Kraatz)

GRAND CAYMAN: Bodden Town (Frank et al. 2011; FSCA); Mastic Trail (Frank et al. 2011; RHTC)

Aleocharinae sp. A

CAYMAN BRAC: Hemmington Rd. at Songbird Dr. (Frank et al. 2011; FSCA); GRAND CAYMAN: Mastic Trail (Frank et al. 2011; FSCA; RHTC)

Aleocharinae sp. B

CAYMAN BRAC: Hemmington Rd. at Songbird Dr. (Frank et al. 2011; FSCA)

Aleocharinae sp. C

CAYMAN BRAC: Hemmington Rd. at Songbird Dr. (Frank et al. 2011; FSCA; RHTC); Major Donald Dr., 0.6 km E jct. Ashton Reid Dr. (Frank et al. 2011; FSCA)

Aleocharinae sp. D

GRAND CAYMAN: Mastic Trail (Frank et al. 2011; RHTC)

Aleocharinae sp. E

CAYMAN BRAC: Major Donald Dr., 0.6 km E jct. Ashton Reid Dr. (Frank et al. 2011; FSCA)

Aleocharinae sp. F

CAYMAN BRAC: north shore bluff (Frank et al. 2011; RHTC)

Anotylus insignitus (Gravenhorst)

CAYMAN BRAC: Creek (Frank et al. 2011; FSCA); Major Donald Dr., 0.6 km E jct. Ashton Reid Dr. (Frank et al. 2011; FSCA; RHTC); GRAND CAYMAN: no specific locality (Frank et al. 2011; FSCA)

Apocellus ustulatus Erichson

GRAND CAYMAN: no specific locality (Frank et al. 2011; FSCA)

Astenus cubensis Blackwelder

CAYMAN BRAC: Bight Rd., Brac Parrot Reserve (Frank et al. 2011; FSCA); Creek (Frank et al. 2011; FSCA); Major Donald Dr., 0.6 km E jct. Ashton Reid Dr. (Frank et al. 2011; RHTC); Major Donald Dr., 0.4 km E jct. Bluff Rd. (Frank et al. 2011; FSCA)

Atheta guatemalae Bernhauer & Scheerpeltz

“CAYMAN ISLANDS” (Blackwelder 1947; Frank et al. 2011)

Baeocera sp. 1

CAYMAN BRAC: Hemmington Rd. at Songbird Dr. (FSCA); Major Donald Dr., 0.6 km E jct. Ashton Reid Dr. (FSCA); GRAND CAYMAN: Mastic Trail (FSCA; RHTC)

Baeocera sp. 2

CAYMAN BRAC: Major Donald Dr., 0.4 km E jct. Ashton Reid Dr. (FSCA); Major Donald Dr., 0.6 km E jct. Ashton Reid Dr. (FSCA; RHTC); GRAND CAYMAN: Mastic Trail (RHTC); Queen Elizabeth II Botanic Park (FSCA)

Belonuchus gagates Erichson

CAYMAN BRAC: Creek (Frank et al. 2011; FSCA); Hemmington Rd. at Songbird Dr. (Frank et al. 2011; FSCA; RHTC); Bight Rd., Brac Parrot Reserve (Frank et al. 2011; FSCA)

Biblomimus sp.

GRAND CAYMAN: Mastic Trail (Frank et al. 2011; RHTC)

Bledius jamaicensis Blackwelder

CAYMAN BRAC: Brac Paradise Subdivision (Frank et al. 2011; RHTC)

Bledius mandibularis Erichson

LITTLE CAYMAN: North Coast Rd., 0.1 km W jct. Olivine Kirk Rd. (Frank et al. 2011; FSCA); 0.3 km SE Spot Bay (Frank et al. 2011; RHTC)

Bledius punctatissimus LeConte (= *Bledius esposus* Blackwelder)

LITTLE CAYMAN: no specific locality (Blackwelder 1947)

Bryoporus cf. *bicolor* Blackwelder

CAYMAN BRAC: Hemmington Rd. at Songbird Dr. (Frank et al. 2011; FSCA; RHTC)

Bryoporus cf. *regulus* Blackwelder

CAYMAN BRAC: Hemmington Rd. at Songbird Dr. (Frank et al. 2011); GRAND CAYMAN: Mastic Trail (Frank et al. 2011; FSCA; RHTC)

Carpelimus correctus Blackwelder

CAYMAN BRAC: Major Donald Dr., 0.6 km E jct. Ashton Reid Dr. (Frank et al. 2011; FSCA); GRAND CAYMAN: George Town UCCI (Frank et al. 2011; FSCA); Mastic Trail (Frank et al. 2011; FSCA); Queen Elizabeth II Botanic Park (Frank et al. 2011; FSCA)

Carpelimus dissonus (Bierig)

LITTLE CAYMAN: no specific locality (Blackwelder 1947)

Carpelimus cf. phaios Blackwelder

CAYMAN BRAC: Brac Paradise Subdivision (Frank et al. 2011; FSCA); Major Donald Dr., 0.4 km E jct. Ashton Reid Dr. (Frank et al. 2011; FSCA); Major Donald Dr., 0.6 km E jct. Ashton Reid Dr. (Frank et al. 2011; FSCA); GRAND CAYMAN: Bodden Town (Frank et al. 2011; FSCA); George Town, UCCI (Frank et al. 2011; FSCA); vicinity Gun Bay (Frank et al. 2011; FSCA); Mastic Trail (Frank et al. 2011; RHTC); Queen Elizabeth II Botanic Park (Frank et al. 2011; FSCA)

Carpelimus aridus (Jacquelin DuVal)

GRAND CAYMAN: George Town, UCCI (Frank et al. 2011; FSCA); Queen Elizabeth II Botanic Park (Frank et al. 2011; FSCA); LITTLE CAYMAN: North Coast Rd., 0.1 km W jct. Olivine Kirk Rd. (Frank et al. 2011; FSCA)

Carpelimus chapini Blackwelder

GRAND CAYMAN: no specific locality (Blackwelder 1947)

Carpelimus sordidus (Cameron)

CAYMAN BRAC: Major Donald Dr., 0.4 km E jct. Ashton Reid Dr. (Frank et al. 2011; FSCA); GRAND CAYMAN: Bodden Town (Frank et al. 2011; FSCA); Mastic Trail (Frank et al. 2011; FSCA); Queen Elizabeth II Botanic Park (Frank et al. 2011; FSCA); LITTLE CAYMAN: North Coast Rd., 0.1 km W jct. Olivine Kirk Rd. (Frank et al. 2011; FSCA); 0.3 km SE Spot Bay (Frank et al. 2011; FSCA)

Coenonica puncticollis Kraatz

CAYMAN BRAC: Major Donald Dr., 0.4 km E jct. Ashton Reid Dr. (Frank et al. 2011; FSCA; RHTC)

Coproporus pulchellus (Erichson)

GRAND CAYMAN: no specific locality (Frank et al. 2011; FSCA); CAYMAN BRAC: Creek (Frank et al. 2011; FSCA)

Decarthron sp.

CAYMAN BRAC: Bight Rd., Brac Parrot Reserve (Frank et al. 2011; FSCA); Major Donald Dr., 0.6 km E jct. Ashton Reid Dr. (Frank et al. 2011; RHTC)

Diochus nanus Erichson

CAYMAN BRAC: Major Donald Dr., 0.4 km E jct. Ashton Reid Dr. (Frank et al. 2011; FSCA); GRAND CAYMAN: Mastic Trail (Frank et al. 2011; FSCA; RHTC)

near *Euplectus* sp.

CAYMAN BRAC: Creek (Frank et al. 2011; FSCA)

Euwira sp.

CAYMAN BRAC: Major Donald Dr., 0.6 km E jct. Ashton Reid Dr. (Frank et al. 2011; FSCA)

Holobus chrysopygus (Kraatz)

CAYMAN BRAC: Creek (Frank et al. 2011; FSCA); Major Donald Dr., 0.4 km E jct. Ashton Reid Dr. (Frank et al. 2011; RHTC)

Holotrochus minor (Fauvel)

GRAND CAYMAN: Mastic Trail (Frank et al. 2011; RHTC)

Homaetarsus albipes (Erichson)

CAYMAN BRAC: Brac Paradise Subdivision (Frank et al. 2011; RHTC); Bight Rd., Brac Parrot Reserve (Frank et al. 2011; FSCA); Major Donald Dr., 0.6 km E jct. Ashton Reid Dr. (Frank et al. 2011; FSCA); GRAND CAYMAN: Mastic Trail (Frank et al. 2011; RHTC)

Homaetarsus solus Blackwelder

CAYMAN BRAC: Major Donald Dr., 0.6 km E jct. Ashton Reid Dr. (Frank et al. 2011; FSCA); GRAND CAYMAN: Mastic Trail (Frank et al. 2011; FSCA); Queen Elizabeth II Botanic Park (Frank et al. 2011; FSCA)

Jubus sp.

CAYMAN BRAC: Hemmington Rd. at Songbird Dr. (Frank et al. 2011; RHTC); Major Donald Dr., 0.6 km E jct. Ashton Reid Dr. (Frank et al. 2011; FSCA; RHTC)

Lithocharis sororcula Blackwelder

CAYMAN BRAC: Bight Rd., Brac Parrot Reserve (Frank et al. 2011; FSCA); Hemmington Rd. at Songbird Dr. (Frank et al. 2011; FSCA; RHTC); Major Donald Dr., 0.4 km E jct. Ashton Reid Dr. (Frank et al. 2011; FSCA; RHTC); Major Donald Dr., 0.6 km E jct. Ashton Reid Dr. (Frank et al. 2011; FSCA; RHTC)

Lobrathium odium Blackwelder

GRAND CAYMAN: Bodden Town (Frank et al. 2011; FSCA); Mastic Trail (Frank et al. 2011; FSCA; RHTC); Queen Elizabeth II Botanic Park (Frank et al. 2011; FSCA; RHTC); LITTLE CAYMAN: North Coast Rd., 0.1 km W jct. Olivine Kirk Rd. (Frank et al. 2011; FSCA; RHTC)

Myllaena currax Notman

GRAND CAYMAN: Mastic Trail (Frank et al. 2011; RHTC); Queen Elizabeth II Botanic Park (Frank et al. 2011; FSCA)

Myllaena insipiens Casey

GRAND CAYMAN: 0.7 mi N Sand Bluff (Frank et al. 2011; RHTC)

Neobisnius humilis Erichson

CAYMAN BRAC: Major Donald Dr., 0.4 km E jct. Ashton Reid Dr. (Frank et al. 2011; RHTC); GRAND CAYMAN: no specific locality (Frank et al. 2011; FSCA)

Neoxantholinus cristatus Smetana

GRAND CAYMAN: Salina Reserve 19°21'N, 18°08W (Frank 2012; USNM)

Nisaxis tomentosa (Aubé)

GRAND CAYMAN: Mastic Trail (Frank et al. 2011; FSCA; RHTC); Queen Elizabeth II Botanic Park (Frank et al. 2011; FSCA; RHTC)

Oligota parva Kraatz

GRAND CAYMAN: Mastic Trail (Frank et al. 2011; RHTC)

Osorius lewisi Blackwelder

CAYMAN BRAC: Major Donald Dr., 0.6 km E jct. Ashton Reid Dr. (Frank et al. 2011; FSCA; RHTC); GRAND CAYMAN: George Town (Frank et al. 2011; FSCA); Mastic Trail (Frank et al. 2011; FSCA; RHTC); Queen Elizabeth II Botanic Park (Frank et al. 2011; FSCA; RHTC)

Oxypoda sp.

CAYMAN BRAC: Major Donald Dr., 0.4 km E jct. Ashton Reid Dr. (Frank et al. 2011; FSCA); Major Donald Dr., 0.6 km E jct. Ashton Reid Dr. (Frank et al. 2011; FSCA); GRAND CAYMAN: Mastic Trail (Frank et al. 2011; RHTC)

Oxytelus incisus Motschulsky

GRAND CAYMAN: no specific locality (Frank et al. 2011; FSCA)

Palaminus sp.

GRAND CAYMAN: Queen Elizabeth II Botanic Park (Frank et al. 2011; FSCA)

Phanerota sp.

CAYMAN BRAC: Bight Rd., Brac Parrot Reserve (Frank et al. 2011; FSCA); Hemmington Rd. at Songbird Dr. (Frank et al. 2011; FSCA; RHTC); Major Donald Dr., 0.4 km E jct. Ashton Reid Dr. (Frank et al. 2011; FSCA); Major Donald Dr., 0.6 km E jct. Ashton Reid Dr. (Frank et al. 2011; FSCA; RHTC); GRAND CAYMAN: Mastic Trail (Frank et al. 2011; RHTC)

Philonthus alumnus Erichson

GRAND CAYMAN: Bodden Town (Frank et al. 2011; FSCA); Frank Sound Rd. (Frank et al. 2011; RHTC); George Town (Frank et al. 2011; FSCA); vicinity Gun Bay (Frank et al. 2011; FSCA); Mastic Trail (Frank et al. 2011; FSCA; RHTC); Queen Elizabeth II Botanic Park (Frank et al. 2011; FSCA; RHTC); CAYMAN BRAC: Brac Paradise Subdivision (Frank et al. 2011; FSCA); Major Donald Dr., 0.4 km E jct. Ashton Reid Dr. (Frank et al. 2011; FSCA; RHTC)

Philonthus havaniensis (Laporte)

GRAND CAYMAN: no specific locality (Blackwelder 1947)

Philonthus rufulus Horn

GRAND CAYMAN: George Town, UCCI (Frank et al. 2011; FSCA; RHTC); LITTLE CAYMAN: North Coast Rd., 0.1 km W jct. Olivine Kirk Rd. (Frank et al. 2011; FSCA; RHTC); 0.3 km SE Spot Bay (Frank et al. 2011; FSCA)

Philonthus ventralis (Gravenhorst)

GRAND CAYMAN: no specific locality (Blackwelder 1947)

Pinophilus flavipes Erichson

CAYMAN BRAC: Major Donald Dr., 0.6 km E jct. Ashton Reid Dr. (RHTC); GRAND CAYMAN: Queen Elizabeth II Botanic Park (Frank et al. 2011; FSCA; RHTC)

Pinophilus schwarzi Blackwelder

GRAND CAYMAN: Mastic Trail (Frank et al. 2011; FSCA; RHTC); Queen Elizabeth II Botanic Park (Frank et al. 2011; FSCA; RHTC)

Scaphisoma sp.

CAYMAN BRAC: Major Donald Dr., 0.6 km E jct. Ashton Reid Dr. (FSCA)

Scopaeus cf. *antennalis* Cameron

GRAND CAYMAN: Queen Elizabeth II Botanic Park (Frank et al. 2011; FSCA; RHTC)

Scopaeus cf. *pygmaeus* Erichson

GRAND CAYMAN: George Town, UCCI (Frank et al. 2011; RHTC); Mastic Trail (Frank et al. 2011; FSCA); Queen Elizabeth II Botanic Park (Frank et al. 2011; FSCA)

Scopaeus rambouseki (Bierig)

GRAND CAYMAN: Mastic Trail (Frank et al. 2011; FSCA; RHTC); Queen Elizabeth II Botanic Park (Frank et al. 2011; FSCA)

Scopaeus cf. *rulomus* Sharp

CAYMAN BRAC: Creek (Frank et al. 2011; FSCA); GRAND CAYMAN: Bodden Town (Frank et al. 2011; FSCA); George Town UCCI (Frank et al. 2011; FSCA); Mastic Trail (Frank et al. 2011; FSCA; RHTC); Queen Elizabeth II Botanic Park (Frank et al. 2011; FSCA; RHTC); LITTLE CAYMAN: North Coast Rd., 0.1 km W jct. Olivine Kirk Rd. (Frank et al. 2011; RHTC)

Stamnoderus labeo (Erichson)

GRAND CAYMAN: Queen Elizabeth II Botanic Park (Frank et al. 2011; FSCA)

Sunius debilicornis (Wollaston)

GRAND CAYMAN: no specific locality (Blackwelder 1947; FSCA)

Trimiina genus?

CAYMAN BRAC: Major Donald Dr. at Bight Rd. (Frank et al. 2011; RHTC)

Zyras sp.

GRAND CAYMAN: no specific locality (Blackwelder 1947; Frank et al. 2011)

TENEBRIONIDAE*Adelina bidens* (Schaeffer)

CAYMAN BRAC: Major Donald Dr., 0.6 km E jct. Ashton Reid Dr. (RHTC); GRAND CAYMAN: East End (FSCA); Boatswain Point, Lime Tree Estate (FSCA); George Town UCCI (RHTC)

Adelina pici (Ardoin)

GRAND CAYMAN: no specific locality (FSCA)

Adelina maryjoae Steiner

CAYMAN BRAC: Major Donald Dr., 0.6 km E jct. Ashton Reid Dr. (FSCA; RHTC)

Adelina plana (Fabricius)

CAYMAN BRAC: Major Donald Dr., 0.6 km E jct. Ashton Reid Dr. (FSCA; RHTC); Hemmington Rd. at Songbird Dr (FSCA); Bight Rd., Brac Parrot Reserve (FSCA); Major Donald Dr., 0.4 km E jct. Ashton Reid Dr. (FSCA; RHTC); Major Donald Dr., 0.4 km E jct. Bluff Rd. (FSCA); Sovereign Heights (RHTC); GRAND CAYMAN: East End (FSCA); George Town (FSCA; RHTC); Mastic Trail (FSCA); Seven Mile Beach 3 km N George Town 19°19'N, 81°23'W (USNM); 3 km W Colliers 19°21'N, 81°07'W (USNM); LITTLE CAYMAN: North Coast Road 0.1 km W Olivine Kirk Dr. (FSCA)

Adelonia sulcatula (Champion)

CAYMAN BRAC: Hemmington Rd. at Songbird Dr (FSCA; RHTC); Major Donald Dr., 0.6 km E jct. Ashton Reid Dr. (RHTC)

Alphitobius diaperinus Panzer

GRAND CAYMAN: Boatswain Point, Lime Tree Estate (FSCA); George Town, UCCI (RHTC); Western District, N. W. Pt. (FSCA)

Alphitobius laevigatus Fabricius

GRAND CAYMAN: 1 km S of Old Man Bay 19°20'N, 81°11'W (USNM)

Blapstinus cubanus Marcuzzi [probably synonymous with *B. humilis* Casey, below]

GRAND CAYMAN: Limestone hill W of Botabano (Marcuzzi 1977); Savannah Village (Marcuzzi 1977); South of Airstrip (Marcuzzi 1977); Walkers Road (Marcuzzi 1977); Water Ground (Marcuzzi 1977); West Bay Light Tower (Marcuzzi 1977)

Blapstinus fortis LeConte

GRAND CAYMAN: George Town 19°18'N, 81°23'W (USNM); Hell 19°23'N, 81°24'W (USNM); Mastic Trail (RHTC); Queen Elizabeth II Botanic Park (FSCA)

Blapstinus humilis Casey

CAYMAN BRAC: Bight Rd., Brac Parrot Reserve (FSCA); Hemmington Rd. at Songbird Dr (FSCA); Major Donald Dr., 0.6 km E jct. Ashton Reid Dr. (FSCA); Major Donald Dr., 0.4 km E jct. Ashton Reid Dr., (FSCA; RHTC); GRAND CAYMAN: George Town (2 mi. N) (USNM); Hell 19°23'N, 81°24'W (USNM); The Mountain, 2 km SW of Old Man Bay 19°20'N, 81°12'W (USNM); Queen Elizabeth II Botanic Park (FSCA); LITTLE CAYMAN: North Coast Road 0.1 km W jct. Olivine Kirk Dr. (RHTC)

Blapstinus sp. near *haitensis* Marcuzzi

GRAND CAYMAN: shore of Frank Sound, 1 km E of Breakers 19°18'N, 81°11'W (USNM)

Blapstinus sulcipennis Champion

GRAND CAYMAN: Boatswain Point (FSCA); George Town, UCCI (RHTC); Limestone hill W of Botabano (Marcuzzi 1977); Lower Valley (Marcuzzi 1977); The Mountain, 2 km SW of Old Man Bay 19°20'N, 81°12'W (USNM); N of Red Bay (Marcuzzi 1977); North Side 19°21'N, 81°12'W (USNM); Queen Elizabeth II Botanic Park (FSCA); Sand Bluff 19°19'N, 81°05'W (USNM); Savannah Village (Marcuzzi 1977); SW of Air Strip (Marcuzzi 1977); 2.5 km NE Breakers (Marcuzzi 1977); West Bay 19°20'N, 81°23'W (USNM); West Bay Light Tower (Marcuzzi 1977)

Branchus sp. 1

GRAND CAYMAN: Colliers Point 19°20'N, 81°05'W (USNM); shore of Frank Sound 1 km E of Breakers 19°18'N, 81°11'W (USNM); Palmetto Point near Barkers 19°23'N, 81°22'W (USNM); Rum Point 19°22'N, 81°16'W (USNM); Sand Bluff 19°19'N, 81°05'W (USNM); Smith's Cove, 2 km SW of George Town 19°21'N, 81°07'W (USNM)

Branchus sp. 2

LITTLE CAYMAN: West End Point 19°39'N, 80°07'W (USNM)

Branchus sp. 3

CAYMAN BRAC: North Coast, east of Stake Bay (USNM)

Corticeus sp.

GRAND CAYMAN: Mastic Trail (FSCA)

Diaperis maculata Olivier

GRAND CAYMAN: no specific locality (FSCA)

Diastolinus burtoni Garrido and Gutierrez

CAYMAN BRAC: beach at Great Cave (FSCA); Long Beach, (FSCA; RHTC); North Coast East Stake Bay (Garrido and Gutierrez 1996); West End Point (FSCA); GRAND CAYMAN: Beach Bay (Garrido and Gutierrez 1996); Boatswain Point, Lime Tree Estate (FSCA); Colliers Beach (Garrido and Gutierrez 1996); Colliers Point 19°20'N, 81°05'W (USNM); E of Tarpon Lake (RHTC); shore of Frank Sound 1 km E of Breakers 19°18'N, 81°11'W (USNM); Gun Bay (FSCA); North Side 19°21'N, 81°12'W (USNM); Old Man Bay 19°21'N, 81°10'W (USNM); Palmetto Point near Barkers 19°23'N, 81°22'W (USNM); Pedro Bluff (Garrido and Gutierrez 1996); Pollard Bay (Garrido and Gutierrez 1996); Rum Point 19°22'N, 81°16'W (USNM); Sand Bluff (RHTC); 0.7 mi. N Sand Bluff (RHTC); Vicksville, NW Pt. (FSCA); LITTLE CAYMAN: East Rocky Point 19°41'N, 80°03'W (USNM); Sandy Point (FSCA; RHTC); southwest coast opp. Tarpon Bay 19°41'N, 80°02'W (USNM); West End Point 19°39'N, 80°07'W (USNM)

Diastolinus caymanensis Marcuzzi

CAYMAN BRAC: beach at Great Cave (FSCA); East Light H. (Garrido and Gutierrez 1996); East Stake Bay (Garrido and Gutierrez 1996); Major Donald Dr., 0.6 km E jct. Ashton Reid Dr. (RHTC); near limestone bluff at Pollard Bay, SE Point (Marcuzzi 1977); near limestone bluff at Tibbett's Turn (Marcuzzi 1977); near shore N of Tibbett's Turn (Marcuzzi 1977); North Coast (Garrido and Gutierrez 1996); South East Bay, (Marcuzzi 1977); SE of Stake Bay Point (Marcuzzi 1977)

Diastolinus dentipes Marcuzzi

GRAND CAYMAN: Beach Bay (Garrido and Gutierrez 1996); Boatswain Point, Lime Tree Estate (FSCA); Colliers Point 19°20'N, 81°05'W (USNM); George Town 19°18'N, 81°23'W (USNM); George Town (FSCA); Gun Bay (FSCA); Manse Road (Garrido and Gutierrez 1996); North Side 19°21'N, 81°12'W (USNM); North South Sound Rd. (Garrido and Gutierrez 1996); Old Man Bay 19°21'N, 81°10'W (USNM); 1 km S of Old Man Bay 19°20'N, 81°11'W (USNM); Palmetto Point near Barkers 19°23'N, 81°22'W (USNM); Sound Road, 2 km W of Prospect Point (Marcuzzi 1977); Rum Point 19°22'N, 81°16'W (USNM); Sand Bluff 19°19'N, 81°05'W (USNM); 0.7 mi. N Sand Bluff (RHTC); Seven Mile Beach, 3 km N George Town 19°19'N, 81°23'W (USNM); shore of Frank Sound, 1 km E of Breakers 19°18'N, 81°11'W (USNM); shore of South Sound near Pull-and-be-Damned Pt. 19°16'N, 81°22'W (USNM); Smith's Cove, 2 km SW of George Town 19°21'N, 81°07'W (USNM); S end of Seven Mile Beach at West Bay 19°22'N, 81°24'W (USNM); Vicksville, NW Pt. (FSCA); West Bay (FSCA)

Diastolinus minor Marcuzzi

LITTLE CAYMAN: E of Rosetta Flats (Marcuzzi 1977); E of Tarpon Lake (RHTC); East Rocky Point 19°41'N, 80°03'W (USNM); Guy Banks Road, 2.4 km E Blossom Village (FSCA); Limestone bluff at Callabash Spot (Marcuzzi 1977); Limestone bluff at Mary's Bay (Marcuzzi 1977); Owen Island (Marcuzzi 1977); Sandy Point (RHTC); southwest coast opp. Tarpon Bay 19°41'N, 80°02'W (USNM); West End Point 19°39'N, 80°07'W (USNM)

Diastolinus inflatitibia Marcuzzi

CAYMAN BRAC: Bight Rd., Brac Parrot Reserve (FSCA); Major Donald Dr., 0.4 km E jct. Ashton Reid Dr. (FSCA); Major Donald Dr., 0.4 km E jct. Bluff Rd., N19°71.848'-W79°79.504' (FSCA); LITTLE CAYMAN: East Rocky Point 19°41'N, 80°03'W (USNM); North Coast Road, 0.1 km W jct. Olivine Kirk Rd. (FSCA); Sandy Point (RHTC); West End Point near Light Tower (Marcuzzi 1977)

Gnatocerus curvicornis (Champion)

CAYMAN BRAC: Bight Rd., Brac Parrot Reserve (FSCA; RHTC); Hemmington Rd. at Songbird Dr (FSCA); Major Donald Dr., 0.4 km E jct. Ashton Reid Dr. (FSCA; RHTC); Major Donald Dr., 0.6 km E jct. Ashton Reid Dr. (FSCA); Major Donald Dr., 0.4 km E Bluff Rd. (FSCA); GRAND CAYMAN: Mastic Trail (FSCA); Queen Elizabeth II Botanic Park (FSCA); Salina Reserve, 19°21'N, 81°08'W (USNM); LITTLE CAYMAN: North Coast Rd., 0.1 km W jct. Olivine Kirk Rd. (FSCA)

Gnatocerus sp. (formerly identified as *G. guatemalensis* (Champion))

GRAND CAYMAN: no specific locality

Gondwanocrypticus platensis (Fairmaire)

GRAND CAYMAN: George Town 19°18'N, 81°23'W (USNM); Hell 19°23'N, 81°24'W (USNM); Rum Point 19°22'N, 81°16'W (USNM); shore of South Sound near Pull-and-be-Damned Pt. 19°16'N, 81°22'W (USNM)

Hymenorus convexus (Casey)

CAYMAN BRAC: Brac Paradise Subdivision (RHTC); North coast of Stokes Bay (Campbell 1978); GRAND CAYMAN: Boatswain Point, Lime Tree Estate, (FSCA); East end of East End (Campbell 1978); vicinity Gun Bay (FSCA); north coast of North Side (Campbell 1978); North coast of Rum Point (Campbell 1978); Salina Reserve 19°21'N, 81°08'W (USNM); south coast of South Sound (Campbell 1978); West end of West Bay (Campbell 1978); Western District, NW Pt. (FSCA); LITTLE CAYMAN: East end of Interior Muddyfoot's Area (Campbell 1978); south coast of South Town (Campbell 1978)

Hymenorus farri Campbell

CAYMAN BRAC: Brac Paradise Subdivision (RHTC); Brac Parrot Reserve (RHTC); East end of Spot Bay near Bluff (Campbell 1978); Long Beach (FSCA; RHTC); Major Donald Dr., 0.4 km E jct. Ashton Reid Dr. (RHTC); West end Cotton-tree Land (Campbell 1978); GRAND CAYMAN: Bodden Town (FSCA); East End (RHTC); East end of East End (Campbell 1978); Frank Sound Road (RHTC); Hell 19°23'N, 81°24'W (Steiner 2004); Mastic Trail (FSCA; RHTC); north coast of North Side (Campbell 1978); N of George Town (Steiner 2004); North Side 19°21'N, 81°12'W (Steiner 2004); Rum Point (RHTC); Rum Point 19°22'N, 81°16'W (Steiner 2004); Queen Elizabeth II Botanic Park (FSCA; RHTC); Queen Elizabeth II Botanic Park, outside of entrance (FSCA); 0.7 mi. N Sand Bluff (RHTC); south coast of South Sound (Campbell 1978); 3 km W Colliers 19°21'N, 81°07'W (Steiner 2004); West end of West Bay (Campbell 1978); LITTLE CAYMAN: Coot Marsh area (FSCA; RHTC); East end, interior of Muddyfoot's Area (Campbell 1978); E of Tarpon Lake (RHTC); Sandy Point (RHTC); south coast of South Town (Campbell 1978); 0.3 mi. E Coot Marsh (RHTC); 0.3 km SE Spot Bay (RHTC)

Hymenorus jamaicensis Campbell

CAYMAN BRAC: Bight Rd., Brac Parrot Reserve (FSCA); Bluff near east end Spot Bay (Campbell 1978); Brac Paradise Subdivision (FSCA); Hemmington Rd. at Songbird Dr (FSCA); Lighthouse Point (RHTC); North coast Stokes Bay (Campbell 1978); South Side Road west (RHTC); 0.3 km SE spot Bay (FSCA); West end Cotton-tree Land (Campbell 1978); West End Point (FSCA; RHTC); GRAND CAYMAN: vicinity Gun Bay (FSCA); Mastic Trail (FSCA); North coast of North Side (Campbell 1978); LITTLE CAYMAN: East end, Interior Muddyfoot's Area (Campbell 1978); E of Tarpon Lake (RHTC); North Coast Road 0.1 km W Olivine Kirk Dr. (FSCA); Sandy Point (RHTC); south coast at Head of Bay 19°40'N, 80°04'W (USNM); south coast Southtown (Campbell 1978)

Hypogena tricornis (Dalman)

CAYMAN BRAC: Major Donald Dr., 0.6 km E jct. Ashton Reid Dr. (FSCA; RHTC)

Hypogena sp.

CAYMAN BRAC: Major Donald Dr., 0.6 km E jct. Ashton Reid Dr. (RHTC)

Myrmechixenus sp.

CAYMAN BRAC: Creek (FSCA)

Nautes sp. 1

GRAND CAYMAN: East End (RHTC; FSCA); vicinity Gun Bay (FSCA; RHTC); Mastic Trail (RHTC; FSCA); Rum Point 19°22'N, 81°16'W (USNM)

Nautes sp. 2

LITTLE CAYMAN: Coot Marsh area (FSCA); North Coast Rd. (RHTC); North Coast Rd. (RHTC); North Coast Road, 0.1 km W Olivine Kirk Dr. (FSCA); south coast at Head of Bay 19°40'N, 80°04'W (USNM); 3 km SE Spot Bay (RHTC) E of Tarpon Lake (RHTC);

Nautes sp. 3

CAYMAN BRAC: Brac Parrot Reserve (FSCA; RHTC); Great Cave (RHTC); Long Beach (FSCA; RHTC); Major Donald Dr., 0.4 km E jct. Ashton Reid Dr. (RHTC); Major Donald Dr., 0.6 km E jct. Ashton Reid Dr. (FSCA; RHTC); Sovereign Heights (FSCA; RHTC); West End Point (FSCA; RHTC)

Neomida bicornis (Fabricius)

CAYMAN BRAC: Major Donald Dr., 0.6 km E jct. Ashton Reid Dr. (FSCA; RHTC); GRAND CAYMAN: Boatswain Point (FSCA); 1 km S of Old Man Bay 19°20'N, 81°11'W (USNM)

Neomida ferruginea (LeConte)

CAYMAN BRAC: near bluff edge at Halfway Ground 19°43'N, 79°49'W (USNM); GRAND CAYMAN: The Mountain, 2 km SW of Old Man Bay 19°20'N, 81°12'W (USNM)

Parahymenorus metallicus caymanensis Campbell

GRAND CAYMAN: Mastic Trail (RHTC); North Side 19°21'N, 81°12'W (USNM); Queen Elizabeth II Botanic Park Rd. (FSCA; RHTC); 1.5 km S Hutland 19°20'N, 81°13'W (USNM); Salina Reserve 19°21'N, 81°08'W (USNM); shore of Frank Sound 1 km E of Breakers 19°18'N, 81°11'W (USNM); West end of George Town (Campbell 1978); LITTLE CAYMAN: 0.3 km SE Spot Bay (RHTC)

Phaleria picipes Say

GRAND CAYMAN: E of Boddentown (Marcuzzi 1977 [as *P. caymanensis* Marcuzzi and *P. angustata* Chevrolat (Watrous and Triplehorn 1982)]; North Side 19°21'N, 81°12'W (USNM); Old Man Bay 19°21'N, 81°10'W (USNM); Palmetto Point near Barkers 19°23'N, 81°22'W (USNM); Queen Elizabeth II Botanic Park (FSCA); Rum Point 19°22'N, 81°16'W (FSCA; USNM); Sandy Point (FSCA); 0.7 mi. N Sand Bluff (RHTC); W Bay B.C.C. (FSCA); LITTLE CAYMAN: Blossom Village (RHTC); south coast at Head of Bay 19°40'N, 80°04'W (USNM)

Phaleria punctipes LeConte

GRAND CAYMAN: Gun Bay (FSCA); North Side 19°21'N, 81°12'W (USNM); Old Man Bay 19°21'N, 81°10'W (USNM); Palmetto Point near Barkers 19°23'N, 81°22'W (USNM); Rum Point 19°22'N, 81°16'W (USNM); Sand Bluff (RHTC); shore of Frank Sound 1 km E of Breakers 19°18'N, 81°11'W (USNM); LITTLE CAYMAN: Blossom Village (RHTC); Sandy Point, (FSCA; RHTC)

Platydema antennatum Laporte and Brullé

CAYMAN BRAC: Major Donald Dr., 0.6 km E jct. Ashton Reid Dr. (FSCA; RHTC)

Platydema excavatum (Say)

CAYMAN BRAC: Brac Parrot Reserve (RHTC); Major Donald Dr., 0.4 km E jct. Ashton Reid Dr. (FSCA; RHTC); Major Donald Dr., 0.6 km E jct. Ashton Reid Dr., (RHTC); Major Donald Dr., 0.4 km E jct. Bluff Rd., (FSCA); GRAND CAYMAN: George Town, UCCI (RHTC)

Platydema micans Zimmermann

GRAND CAYMAN: The Mountain, 2 km SW of Old Man Bay 19°20'N, 81°12'W (USNM); LITTLE CAYMAN: North Coast Road 0.1 km West jct. Olivine Kirk Dr. (FSCA)

Platydema sp.

GRAND CAYMAN: Walkers Road (Marcuzzi 1977)

Rhipidandrus sulcatus Gorham

CAYMAN BRAC: Major Donald Dr., 0.6 km E jct. Ashton Reid Dr. (RHTC); GRAND CAYMAN: Mastic Trail (RHTC); 1 km S of Old Man Bay 19°20'N, 81°11'W (USNM)

Statira sp.

GRAND CAYMAN: no specific locality (FSCA)

Talanus sp.

GRAND CAYMAN: George Town, UCCI (RHTC)

Tribolium castaneum Herbst

GRAND CAYMAN: no specific locality (FSCA)

Trientoma kochi Marcuzzi

CAYMAN BRAC: South East Bay (Marcuzzi 1977)

Tyrtaeus rufus Champion

GRAND CAYMAN: The Mountain, 2 km SW of Old Man Bay 19°20'N, 81°12'W (Hopp and Ivie 2008, USNM); Prospect 19°17'N, 81°20'W (Hopp and Ivie 2008, USNM); Salina Reserve 19°21'N, 81°08'W (Hopp and Ivie 2008, USNM)

Ulomoides ocularis (Casey)

GRAND CAYMAN: Boatswain Point, Lime Tree Estate (FSCA); Hell 19°23'N, 81°24'W (USNM); 1 km W Bodden Town 19°17'N, 81°16'W (USNM); Western District, NW Point (FSCA)

Ulus hirsutus Champion

GRAND CAYMAN: Rum Point 19°22'N, 81°16'W (USNM); LITTLE CAYMAN: Sandy Point (FSCA; RHTC)

TENEBRIONOIDEA *Incertis sedis**Aprostomis* sp.

CAYMAN BRAC: Creek (FSCA)

THROSCIDAE*Aulonothroscus* sp.

GRAND CAYMAN: Queen Elizabeth II Botanic Park Rd. (FSCA); CAYMAN BRAC: Hemmington Rd. at Songbird Dr. (FSCA)

TROGOSITIDAE*Tenebroides* sp.

CAYMAN BRAC: Major Donald Dr., 0.4 km E jct. Ashton Reid Dr. (RHTC); Major Donald Dr., 0.6 km E jct. Ashton Reid Dr. (RHTC); GRAND CAYMAN: George Town, UCCI (RHTC); Mastic Trail (FSCA; RHTC); vicinity Gun Bay (RHTC); West Bay (FSCA); LITTLE CAYMAN: North Coast Rd., 0.1 km W jct. Olivine Kirk Rd. (FSCA)

Temnoscheila sp.

CAYMAN BRAC: Major Donald Dr., 0.4 km E jct. Ashton Reid Dr. (RHTC); Major Donald Dr., 0.6 km E jct. Ashton Reid Dr. (RHTC); LITTLE CAYMAN: 0.3 km SE Spot Bay (RHTC); North Coast Road (RHTC)

ZOPHERIDAE*Acolobicus erichsoni* (Reitter)

CAYMAN BRAC: Brac Parrot Reserve (RHTC); Hemmington Rd. at Songbird Dr. (FSCA; RHTC); Major Donald Dr., 0.4 km E jct. Ashton Reid Dr. (FSCA); Major Donald Dr., 0.6 km E jct. Ashton Reid Dr. (FSCA; RHTC); Sovereign Heights (RHTC)

Bitoma brevipes (Sharp)

GRAND CAYMAN: Boatswain Point (FSCA)

Bitoma discolor Schaeffer

CAYMAN BRAC: Brac Parrot Reserve (FSCA; RHTC); Hemmington Rd. at Songbird Dr. (FSCA; RHTC); Major Donald Dr., 0.4 km E jct. Ashton Reid Dr. (FSCA; RHTC); Major Donald Dr., 0.6 km E jct. Ashton Reid Dr. (FSCA; RHTC); north shore bluff (RHTC); Sovereign Heights (FSCA); GRAND CAYMAN: Mastic Trail (FSCA; RHTC); LITTLE CAYMAN: North Coast Rd., 0.1 km W jct. Olivine Kirk Rd. (FSCA; RHTC); 0.3 km SE Spot Bay (FSCA; RHTC)

Bitoma siccana (Pascoe)

GRAND CAYMAN: Boatswain Point, Lime Tree Estate (FSCA)

Bitoma sp.

GRAND CAYMAN: Mastic Trail (FSCA; RHTC)

Colydium thomasi Stephan

CAYMAN BRAC: Major Donald Dr., 0.6 km E jct. Ashton Reid Dr. (FSCA; RHTC)

Endeitoma granulata (Say)

GRAND CAYMAN: no specific locality (FSCA); LITTLE CAYMAN: North Coast Rd., 0.1 km W jct. Olivine Kirk Rd. (FSCA)

Endeitoma sp.

GRAND CAYMAN: Boatswain Point (FSCA)

Microprius rufulus (Motschulsky)

GRAND CAYMAN: West Bay (FSCA); CAYMAN BRAC: Great Cave (RHTC); Major Donald Dr., 0.4 km E jct. Ashton Reid Dr. (FSCA; RHTC); Major Donald Dr., 0.6 km E jct. Ashton Reid Dr. (FSCA; RHTC); north shore bluff (RHTC)

Microsicus parvulus (Guérin-Méneville)

CAYMAN BRAC: Brac Parrot Reserve (FSCA); Major Donald Dr., 0.6 km E jct. Ashton Reid Dr. (FSCA; RHTC); GRAND CAYMAN: Mastic Trail (RHTC); North Side 19°21'N, 81°12'W (USNM); LITTLE CAYMAN: North Coast Rd., 0.1 km W jct. Olivine Kirk Rd. (FSCA; RHTC)

Monoedus cubanensis Dajoz

CAYMAN BRAC: Brac Parrot Reserve (FSCA; RHTC); Hemmington Rd. at Songbird Dr. (FSCA); Major Donald Dr., 0.4 km E jct. Ashton Reid Dr. (FSCA); Major Donald Dr., 0.6 km E jct. Ashton Reid Dr. (FSCA; RHTC); GRAND CAYMAN: George Town (FSCA; RHTC); Governor Gore's Pond (RHTC); Mastic Trail (FSCA; RHTC)

Literature Cited

- Arnett, R. H., Jr., and M. C. Thomas (editors). 2001.** American Beetles. Vol. 1. Archostemata, Myxophaga, Adephaga, Polyphaga: Staphyliniformia. CRC Press, Boca Raton. xv + 443pp.
- Askew, R. R. 1980.** The insect fauna of Little Cayman. Atoll Research Bulletin 241: 97-114.

- Askwew, R. R. 1994.** Insects of the Cayman Islands. p. 333-356. *In*: M. A. Brunt and J.E. Davies (eds.). The Cayman Islands: natural history and biogeography. Monographiae Biologicae 71. Kluwer Academic Publishers, Dordrecht, The Netherlands, xx + 604 p.
- Ball, G. E. 1992.** [Chapter] 5. Geographical distribution and evolution of the Selenophori (Harpalini) and *Apenes* LeConte (Lebiini) in the Antilles (Coleoptera: Carabidae), pp. 79-121. *In*: The biogeography of ground beetles of mountains and islands (G. R. Noonan, G. E. Ball and N. E. Stork, editors). Intercept Limited, U.K., vii + 256 pp.
- Ball, G. E. and D. Shpeley. 2009.** A taxonomic review of the genus *Apenes* LeConte (Coleoptera: Carabidae: Lebiini) in the West Indies, with descriptions of new species and notes about classification and biogeography. *Annals of the Carnegie Museum* 78: 79-191.
- Baranowski, R. M. , and J. A. Slater. 1998.** The Lygaeidae of the Cayman Islands with the description of a new species of *Ochrimnus* (Hemiptera). *Florida Entomologist* 81: 75-92.
- Barr, W. F. 1976.** Taxonomy of the new clerid genus *Neorthopleura* (Coleoptera). *Melanderia* 24: 1-14.
- Blackwelder, R. E. 1947.** The staphylinid beetles of the Cayman Islands. *Proceedings of the United States National Museum* 97(3213): 117-123.
- Bradley, P.D. and Y. Rey-Millet. 1995.** Birds of the Cayman Islands. Caerulea Press, Italy. 261p.
- Brunt, M. A. 1994.** Vegetation of the Cayman Islands. p. 245-282. *In*: M. A. Brunt and J.E. Davies (eds.). The Cayman Islands: natural history and biogeography. Monographiae Biologicae 71. Kluwer Academic Publishers, Dordrecht, The Netherlands, xx + 604 p.
- Campbell, J. M. 1971.** A revision of the Alleculidae (Coleoptera) of the West Indies. *Memoirs of the Entomological Society of Canada* 1: 1-140.
- Chapin, E. A. 1957.** Records of coccinellid beetles from the Cayman Islands, with descriptions of newspecies from the West Indies. *Entomologists Monthly Magazine* 93: 89-91.
- Clark, S. M., T. Lillrose, and L. A. Belo Neto. 2013.** Leaf beetles of the Cayman Islands (Coleoptera: Chrysomelidae). *Insecta Mundi* 0279: 1-41.
- Darlington, Jr., P. J. 1947.** West Indian Carabidae (Col.). VII. The species of the Cayman Islands. *Entomologist's Monthly Magazine* 83: 209-211.
- Fisher, W. S. 1941.** Results of the Oxford University Cayman Islands Biological Expedition 1938. *Entomologist's Monthly Magazine* 77: 108-115.
- Fisher, W. S. 1948.** Results of the Oxford University Cayman Islands Biological Expedition 1938. Description of five new species and one variety of Cerambycidae. *Entomologist's Monthly Magazine* 84: 225-228.
- Flowers, R. W. and W. H. Klenke. 1976.** The occurrence of three species of aquatic Coleoptera on Grand Cayman Island. *Coleopterists Bulletin* 30(1): 56.
- Frank, J. H. 2012.** *Neoxantholinus cristatus* (Coleoptera: Staphylinidae) is reported from the Cayman Islands. *Insecta Mundi* : 1-2.
- Frank, J. H., Klimaszewski, J., and D. S. Chandler. 2011.** Additions to the Staphylinidae (Coleoptera) of the Cayman Islands. *Insecta Mundi* 0185: 1-10.
- Garrido, O. H. and E. Gutiérrez. 1996.** El género *Diastolinus* (Coleoptera: Tenebrionidae: Pedinini) en las Islas Caimán con descripción de una nueva especie. *Insecta Mundi* 10: 231-234.
- Hopp, K. J. and M. A. Ivie. 2008.** First report of *Tyrtaeus rufus* Champion and *Tyrtaeus dobsoni* Hinton (Tenebrionidae: Diaperinae: Anopidiina) from Florida. *Coleopterists Bulletin* 62: 427-436.
- Hummelinck, P. W. 1983.** Additional notes on Caribbean tiger beetles of the genera *Cicindela* and *Megacephala*. *Studies on the Fauna of Curaçao and other Caribbean Islands* 65: 69-135.
- Ivie, M. A., K. A. Marske, I. A. Foley, K. A. Guerrero, and L. L. Ivie. 2008.** Invertebrates of the Centre Hills and Montserrat, with an emphasis on beetles. p. 56-89. *In*: R. P. Young (ed.). A biodiversity assessment of the Centre Hills, Montserrat. Durrell Conservation Monograph no. 1. Durrell Wildlife Conservation Trust, Jersey, Channel Islands. 319 p. Available from: http://www.durrell.org/library/Document/Durrell_Cons_Monograph_1_full-report.pdf.
- Jones, B. 1994.** Geology of the Cayman Islands. p. 13-49. *In*: M. A. Brunt and J.E. Davies (eds.). The Cayman Islands: natural history and biogeography. Monographiae Biologicae 71. Kluwer

- Academic Publishers, Dordrecht, The Netherlands, xx + 604 p.
- Marcuzzi, G. 1977.** Further studies on Caribbean tenebrionid beetles. *Studies on the Fauna of Curaçao and other Caribbean Islands* 52: 1-71.
- Nearns, E. H. 2008.** Description of the male of *Plectromerus michelii* Nearns and Branham 2008 (Coleoptera: Cerambycidae). *Insecta Mundi* 0038: 1-2.
- Nearns, E. H. and M. A. Branham. 2008.** Revision and phylogeny of the tribes Curiini LeConte and Plectromerini Nearns & Branham, new tribe (Coleoptera: Cerambycidae: Cerambycinae). *Memoirs of the American Entomological Society* No. 47: 1-117.
- Peck, S. P. and D. E. Perez-Gelabert. 2012.** A summary of the endemic beetle genera of the West Indies (Insecta: Coleoptera); bioindicators of the evolutionary richness of this Neotropical archipelago. *Insecta Mundi* 0212: 1-29.
- Peck, S. P. 2005.** A checklist of the beetles of Cuba with data on distributions and bionomics (Insecta: Coleoptera). *Arthropods of Florida and Neighboring Land Areas* 18: 1-241.
- Peck, S. B. 2006.** The beetle fauna Dominica, Lesser Antilles (Insecta: Coleoptera): diversity and distribution. *Insecta Mundi* 20: 165-209.
- Peck, S. B. 2009a.** The beetles of Barbados, West Indies (Insecta: Coleoptera): diversity, distribution and faunal structure. *Insecta Mundi* 0074: 1-51.
- Peck, S. B. 2009b.** Beetle species diversity in the Lesser Antilles islands: How many species are really there? *Insecta Mundi* 0078: 1-5.
- Peck, S. B. 2009c.** The beetles of St. Lucia, Lesser Antilles (Insecta: Coleoptera): diversity and distribution. *Insecta Mundi* 0106: 1-34.
- Peck, S. B. 2010.** The beetles of the island of St. Vincent, Lesser Antilles (Insecta: Coleoptera): diversity and distributions. *Insecta Mundi* 0144: 1-77.
- Peck, S. B. 2011a.** The diversity and distributions of the beetles (Insecta: Coleoptera) of the northern Leeward Islands, Lesser Antilles (Anguilla, Antigua, Barbuda, Nevis, Saba, St. Barthélemy, St. Eustatius, St. Kitts, and St. Martin-St. Maarten). *Insecta Mundi* 0159: 1-54.
- Peck, S. B. 2011b.** The beetles of Martinique, Lesser Antilles (Insecta: Coleoptera); diversity and distributions. *Insecta Mundi* 0178: 1-57.
- Perez-Gelabert, D. E. 2008.** Arthropods of Hispaniola (Dominican Republic and Haiti): A checklist and bibliography. *Zootaxa* 1831: 1-530.
- Ratcliffe, B. C. 1976.** A revision of the genus *Strategus* (Coleoptera: Scarabaeidae). *Bulletin of the University of Nebraska State Museum* 10(3): 93-204, figs. 1-176.
- Ratcliffe, B. C. 1986.** Two new species of *Dyscinetus* from the West Indies and South America (Coleoptera: Scarabaeidae: Dynastinae). *Coleopterists Bulletin* 40(1): 75-80.
- Ratcliffe, B. C. and Ronald D. Cave. 2010.** The Dynastinae (Coleoptera: Scarabaeidae) of the Cayman Islands (West Indies), with descriptions of *Tomarus adoceteus*, new species (Pentodontini) and *Caymania nitidissima*, new genus and species (Phileurini). *Insecta Mundi* 0139: 1-15
- Riley, E. G. and A. J. Gilbert. 2000.** Three new species of *Cryptocephalus* Geoffroy from the United States and a new United States record (Coleoptera: Chrysomelidae, Cryptocephalinae). *Occasional Papers of the Consortium Coleopterorum* 3(1): 30-35. [Article dated 1999, but actually published in 2000]
- Sanderson, M. W. 1939.** A new *Phyllophaga* (Col., Scarabaeidae) from the Cayman Islands, B.W.I. (Results of the Oxford University Biological Expedition to the Cayman Islands 1938). *Entomologist's Monthly Magazine* 75: 274-276.
- Selander, R. B. and J. K. Bouseman. 1960.** Meloid beetles (Coleoptera) of the West Indies. *Proceedings of the United States National Museum* 111(3428): 197-226.
- Short, A. E. Z. 2004.** Review of the *Enochrus* Thomson of the West Indies (Coleoptera: Hydrophilidae). *Koleopterologische Rundschau* 74: 351-361.
- Shpeley, D., and George E. Ball. 2008.** Taxonomic review of the Neotropical *Tetragonoderus quadriguttatus* assemblage (Coleoptera: Carabidae: Cyclosomini) with description of *T. dewei*, new species, and new West Indian and Nearctic locality records. *Insecta Mundi* 0050: 1-16
- Slipinski, S. A. 1989.** Review of the Passandridae (Coleoptera, Cucujoidea) of the world. II. Genus *Catogenus* Westwood. *Polskie Pismo Entomol* 59: 85-129.

- Steiner, W. E., Jr. 2004.** New distribution records and recent spread of *Hymenorus farri* Campbell (Coleoptera: Tenebrionidae: Alleculinae) to Florida and in the Caribbean region. Proceedings of the Entomological Society of Washington 106(4): 739-746.
- Triplehorn, C. A. and L. E. Watrous. 1979.** A synopsis of the genus *Phaleria* in the United States and Baja California (Coleoptera: Tenebrionidae). Coleopterists Bulletin 33(3): 275-295.
- Turnbow, Jr., R. H. and M. C. Thomas. 2008.** An annotated checklist of the Coleoptera (Insecta) of the Bahamas. Insecta Mundi 0034: 1-64
- Valentine, B. D. 2003.** A catalogue of West Indies Anthribidae (Coleoptera). Insecta Mundi 17(1-2): 49-67.
- Valentine, B. D., and M. A. Ivie. 2005.** Beetles: Coleoptera. p. 274-282. In: J. Lazell (ed.). Island: Fact and theory in nature. University of California Press; Berkeley. 382 p.
- Vondel, B. J. van, and P. J. Spangler. 2008.** Revision of the Haliplidae of the Neotropical Region including Mexico (Coleoptera: Haliplidae). Koleopterologische Rundschau 78: 69-194.
- Wibmer, G. J. 1989.** Revision of the weevil genus *Tyloderma* Say (Col.: Curculionidae) in Mexico, Central America, South America, and the West Indies. Evolutionary Monographs 11: 1-118.
- Woodruff, R. E., B. M. Beck, P. E. Skelley, C. Y. L. Schotman, and M. C. Thomas. 1998.** Checklist and bibliography of the insects of Grenada and the Grenadines. Center for Systematic Entomology Memoirs 2: 1-286.

Received February 1, 2013; Accepted February 6, 2013.