

Plate 51. MARINE DIATOMS FROM SAMOA

Source of Material

The sources of the diatom plate figures are slides from the Healey collection held at the National Institute of Water and Atmospheric Research, (NIWA), Greta Point, Wellington, New Zealand, as follow:

- HC 1178 Apia, Samoa
- HC 1589 a selected group of 50 forms, recent marine, Samoa
- HC 1649 - HC 1650, Apia, Samoa, recent marine
- HC 1701 strew, recent marine, Samoa
- HC 2964 from algae, Samoa. Thum slide No.2519
- HC 3227 *Navicula lyra*, strew, recent marine, Apia, Samoa, Möller
- HC 3228 Recent marine strew, Apia, Samoa, Möller
- HC 3229 *Aulacodiscus recedens*, strew, recent marine, Samoa, Möller
- HC 3230 Recent marine strew, Samoa, Möller

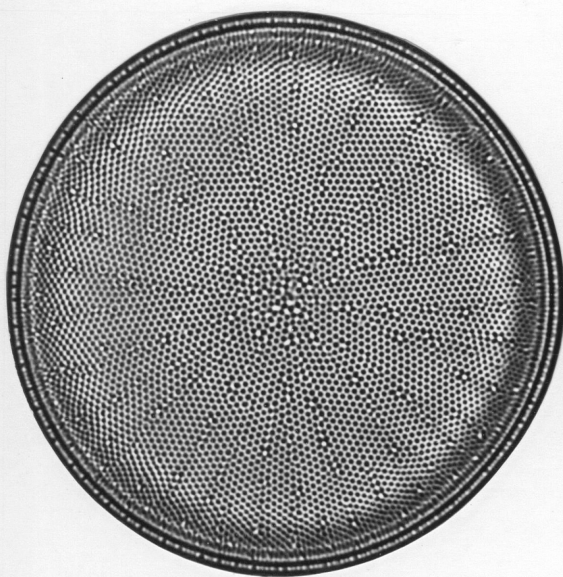
Plate Fifty-one:

- 59-60 *Thalassiosira* sp. indet. The specimen has marginal processes, but identity is uncertain.
- 61 *Lyrella robertsiana* (Greville) Mann in Round, Crawford and Mann 1990. See Hendey (1970, pl. 3, figs. 23-24) which closely resembles this specimen and also Ricard (1977, pl. 3, fig. 1), identified as *Navicula robertsiana*.
- 62 *Triceratium robertsonianum* Greville 1866. See Schmidt's Atlas (1874-1959, pl. 83, figs. 2-3) of a specimen from Samoa.
- 63 *Triceratium dictyotum* Sims and Ross 1990. See Schmidt's Atlas (1874-1959, pl. 85, fig. 8) given as *Biddulphia reticulata* fo. *trigona*. Assignment to *Biddulphia* was revised by Sims and Ross (1990) and *B. reticulata* was re-named *Triceratium dictyotum*.
- 64 *Cocconeis pseudomarginata* Gregory 1857. See Hendey (1964, pl. 28, fig. 20).
- 65 *Rhabdonema punctatum* (Harvey and Bailey) Stodder 1880. See Grunow (1862, pl. 9, fig. 3a) and also Desikachary and Prema (1987, pl. 385, figs. 2, 5).
- 66 *Rhabdonema adriaticum* Kützing 1844. See W. Smith (1856, pl. 38, fig. 305b).
- 67 *Navicula (Lyrella) lyra* var. *dilatata* Schmidt in Schmidt et al. 1874 (No formal transfer to *Lyrella* can be found for this variety). See Ricard (1977, pl. 3, fig. 4).

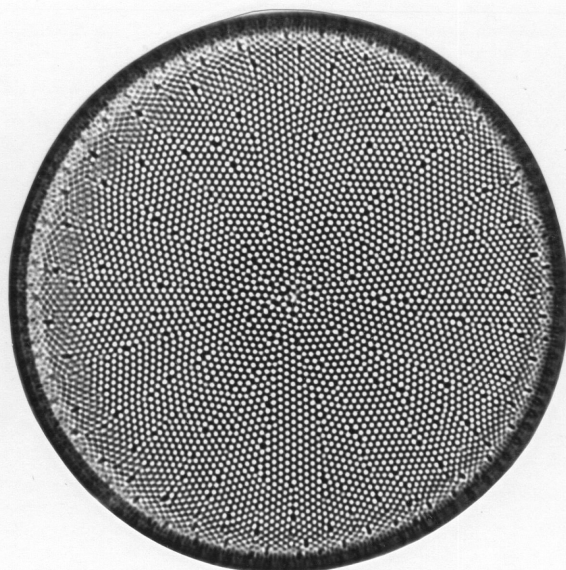
- 68 *Lyrella lyra* (Ehrenberg) Karajeva 1978. See Hendeby (1964, pl. 33, fig. 2), identified as *Navicula lyra*.
- 69 *Diploneis nitescens* (Gregory) Cleve 1894. See Hustedt (1937, fig. 1047).
- 70 *Surirella eximia* Greville 1857. This species is now assigned to *S. fastuosa*. See Paddock (1985, pl. 8, fig. L-7).

Magnifications: figs. 61-62, 65-66, 68: x750; all others: x1000

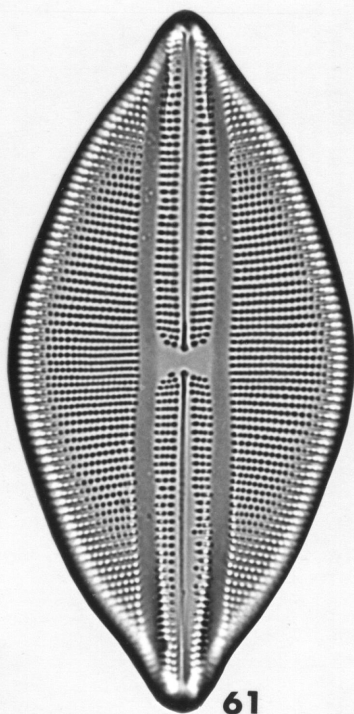
Scale Bar: scale bar is 40 microns for the figures at x750; 30 microns at x1000



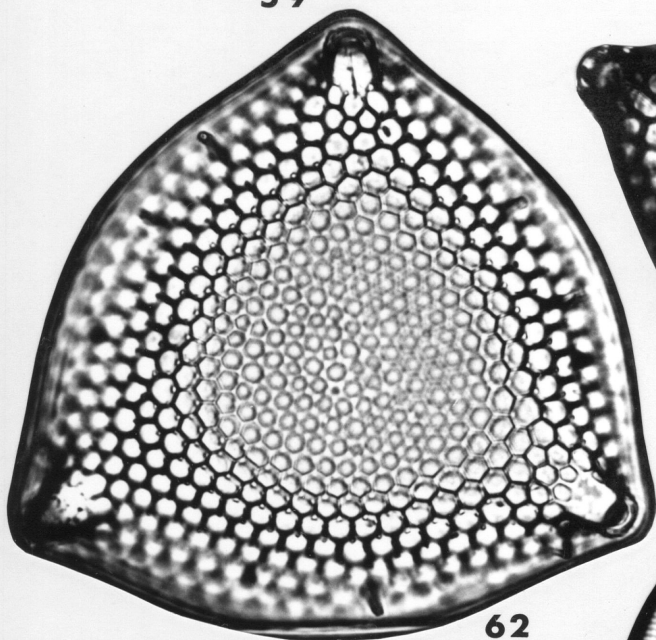
59



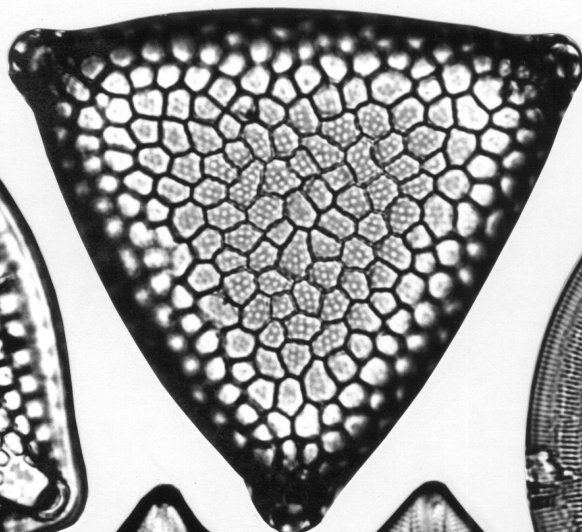
60



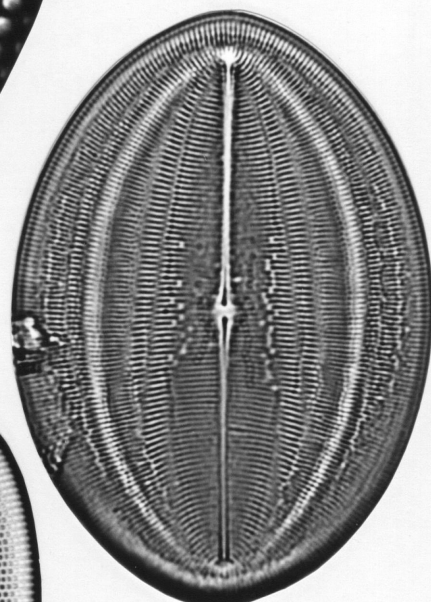
61



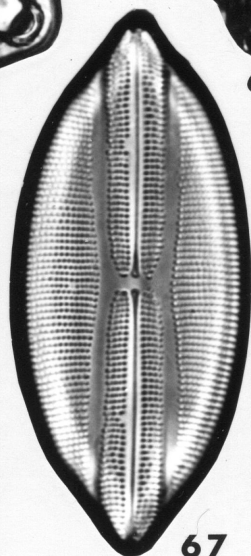
62



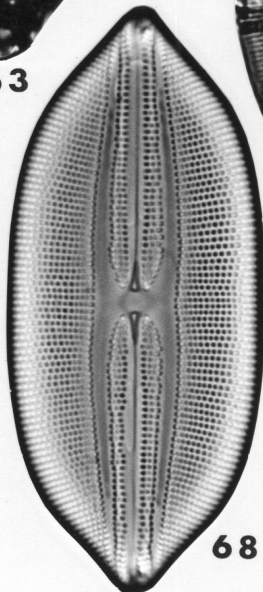
63



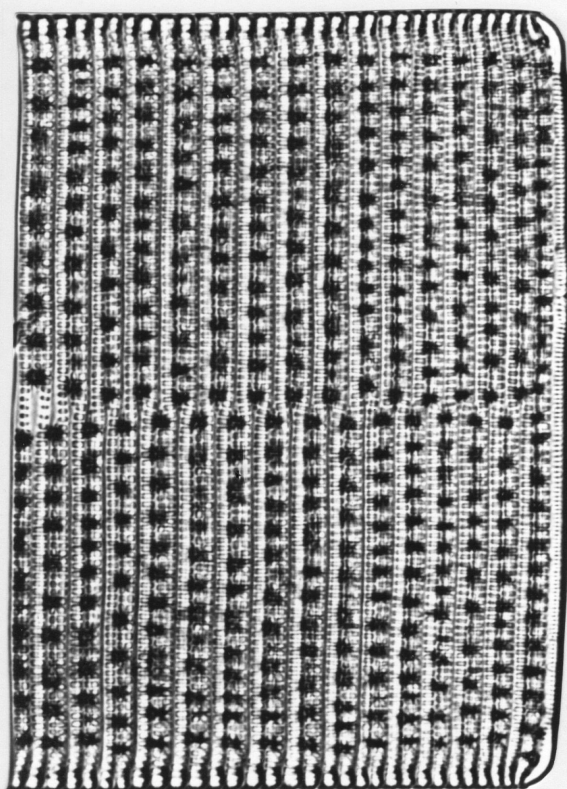
64



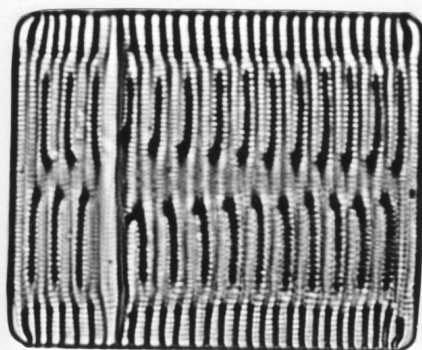
67



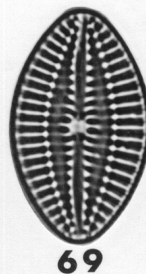
68



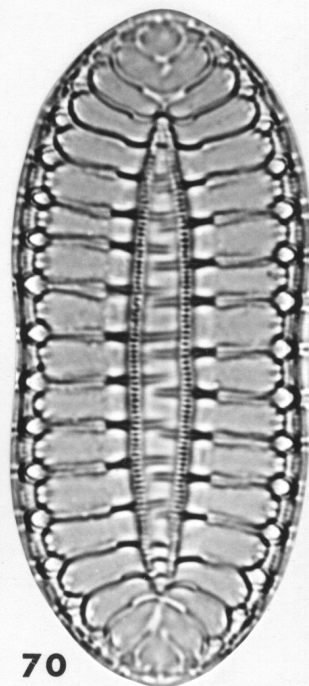
65



66



69



70