

Plate 54: DIATOMS FROM VARIOUS OR UNKNOWN LOCALITIES

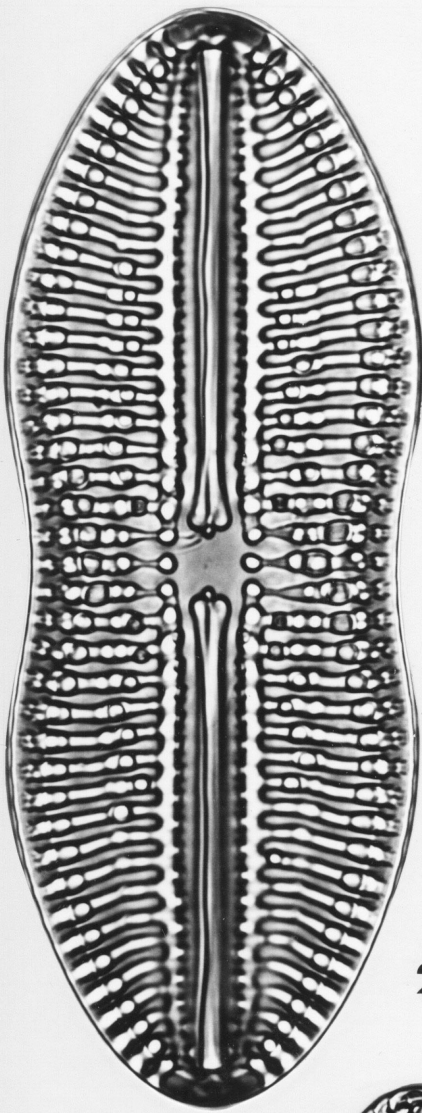
Source of Material

All specimens are from slides in the Healey Collection (HC), held at the National Institute of Water and Atmospheric Research (NIWA), Greta Point, Wellington, New Zealand. Data on locality and maker of the slide have been added based on the slide labels. Where no locality is given, the slide presents a selected specimen.

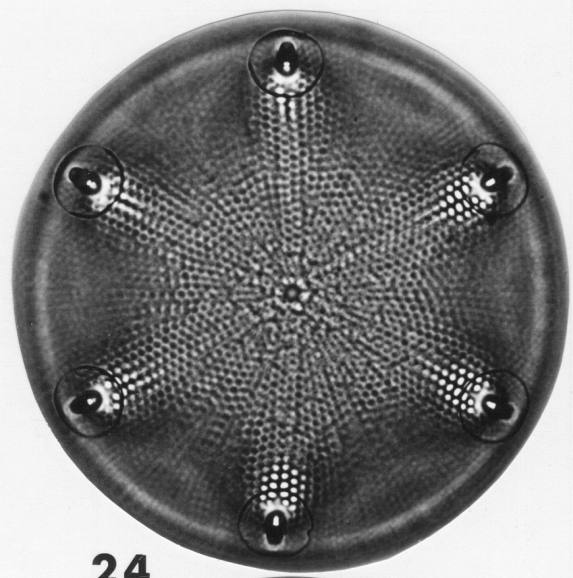
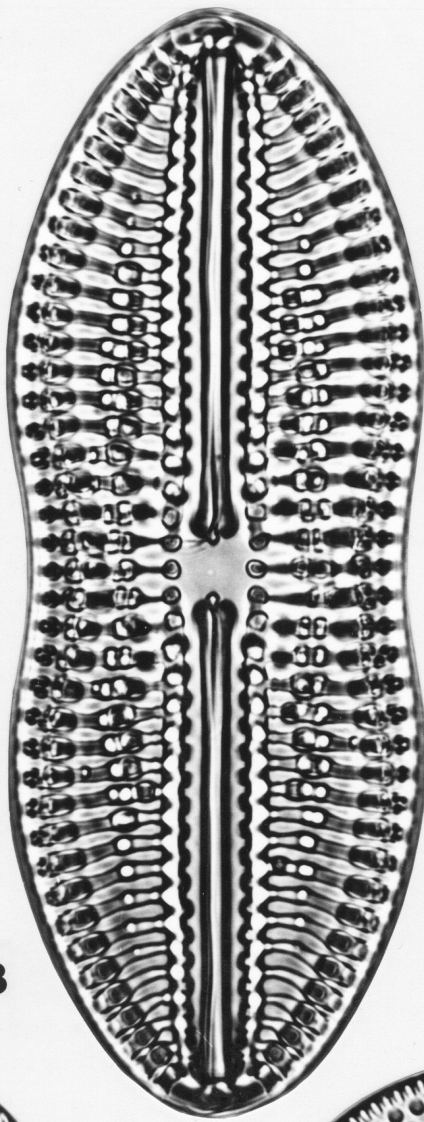
Plate Fifty-four:

- 23 *Diploneis ornata* Schmidt in Schmidt et al. 1881. Both images of same specimen at different focus. Slide HC-3744. See Schmidt's Atlas (1874-1959, pl. 69, fig. 5).
- 24 *Aulacodiscus sollittianus* Norman 1861. See Norman (1861, p. 7, pl. 2, fig. 5), Rattray (1888, p. 377) and Schmidt's Atlas (1874-1959, pl. 33, fig. 13). The two images are of the same specimen, but at different focus. Slide HC-1966. Norman's illustration is rather inaccurate and his description is brief but states appropriately ..."processes large, and, under a low power, appearing as if they had rings attached to them." Rattray's description (1888, p. 377) is more precise and is more applicable to the figures presented here.
- 25 *Diploneis gemmata* (Greville) Cleve 1894. Slide HC-3604, Colon, Panama. See Hustedt (1937, fig. 1050a) of a specimen given as *D. gemmata* var. *basilica*.
- 26 *Diploneis pandura* (Brebisson) F.W. Mills 1934. Slide HC-3745. See Hustedt (1937, fig. 1034) of a specimen given as *D. crabro* var. *pandura*.
- 27 *Navicula peregrina* (Ehrenberg) Kützing 1844. Slide HC-3607, Kinnegar, Hollywood. See Schmidt's Atlas (1874-1959, pl. 47, figs. 57-58).
- 28 *Glyphodesmis nankoorensis* (Grunow) Kolbe 1957. Slide HC-3755. The identity is somewhat in doubt. It is given as *Plagiogramma ceylanense* Leuduger-Fortmorel. According to Desikachary (1989, pl. 687, figs. 1-3), it is *G. nankoorensis* and is identical to this specimen and another shown in this volume (pl. 43, fig. 121).
- 29 *Psammodiscus nitidus* (Gregoy) Round and Mann 1980. See Round and Mann (1980, p. 368, fig. 1B). Slide HC-782, Algoa Bay. Specimen given as *Stictodiscus* n. sp.
- 30 *Trachyneis antillarum* var. *kurzii* (Grunow in Cleve) Cleve 1894. See Cleve (1878, pl. 2, fig. 12) and also Desikachary (1989, pl. 756, figs. 3-5). Slide HC-1678, from surface of ancient lava, Puy-de-Dome, France.
- 31 *Stictodiscus insignis* Greville 1861. Slide HC-725, Macassar Straits. A doubtful identification, but the specimen agrees well with Desikachary (1989, pl. 713 fig. 1) of *S. hardmanianus*. Greville's (1861, p. 41, pl. 4, fig. 4) and description does not agree with the HC 725 specimen of fig. 31 above. Unfortunately, a photo of Greville's type specimen in Williams (1988, pl. 55, fig. 10) is poorly defined and conveys little information.

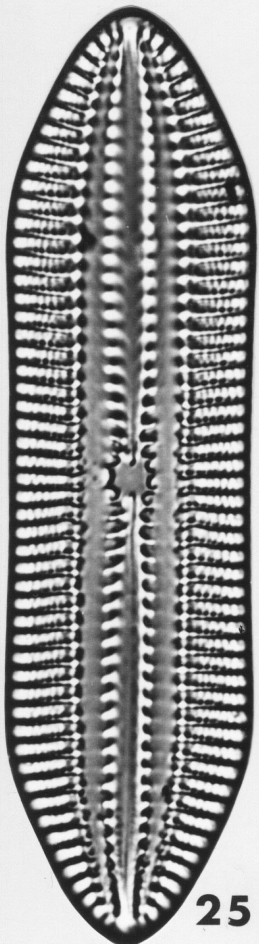
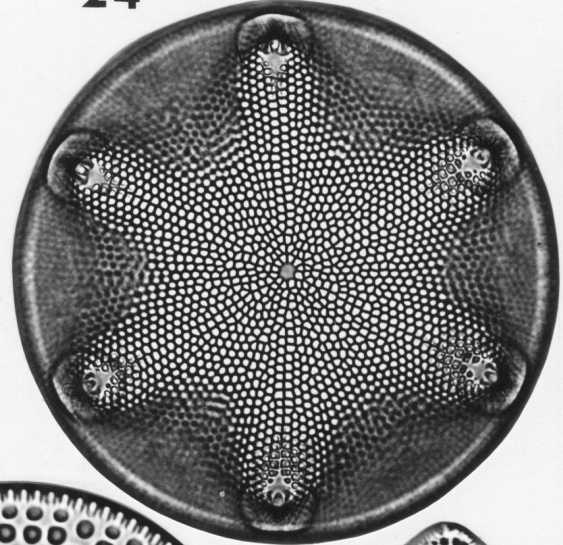
Magnifications: figs. 24, 29: x500; figs. 26, 30-31: x750; figs. 23 and 28: x1000
Scale Bar: scale bar is 60 microns for the figures at x500; 40 microns at x750;
30 microns at x1000



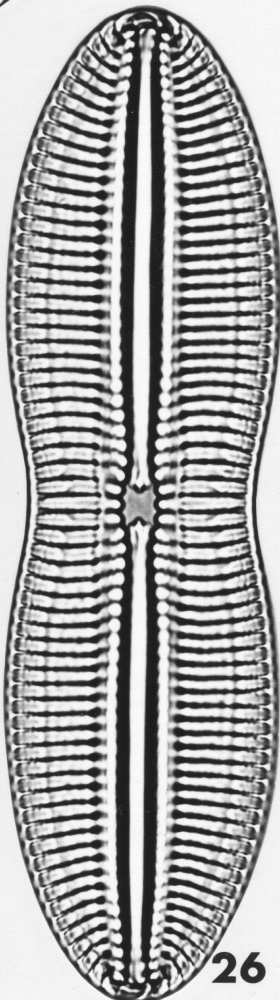
23



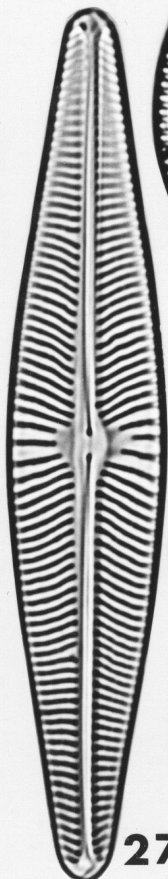
24



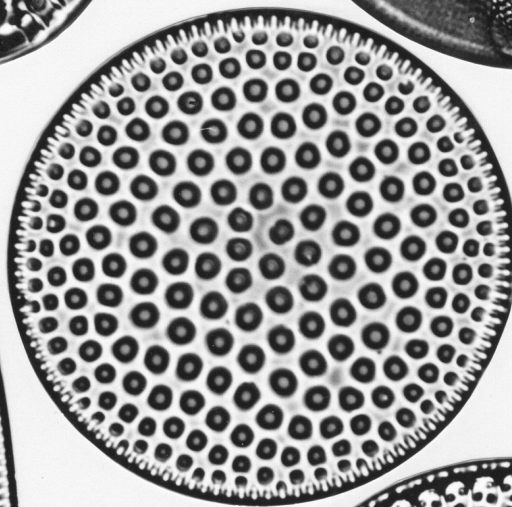
25



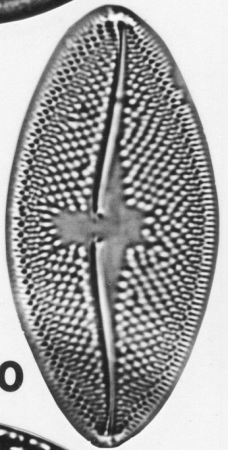
26



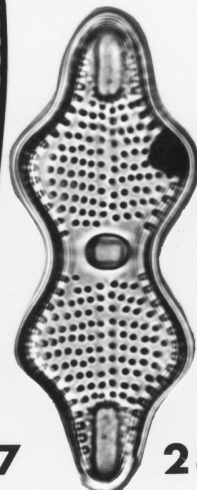
27



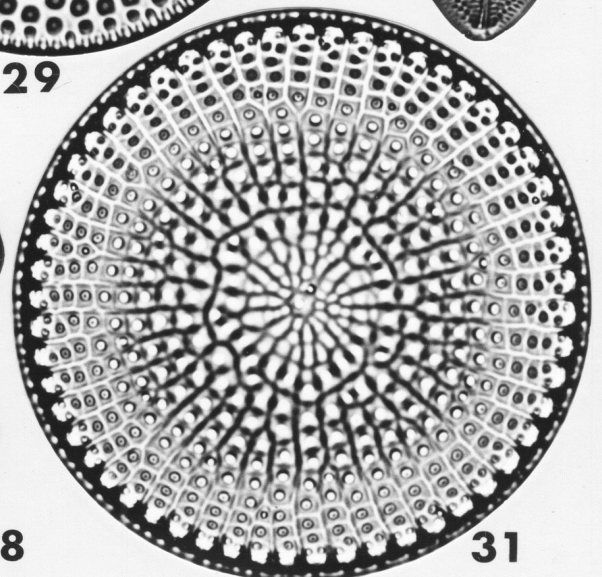
29



30



28



31