

Contents

Introduction	4
Insect identification	6
Class Insecta (insects)	8
Insect orders of Great Britain and Ireland	
– a simplified guide to adults	10
– selected larvae and nymphs	19
Glossary	26
Watching and photographing insects	30
THE SPECIES ACCOUNTS	33
ARCHAEOGNATHA – Bristletails	34
ZYGENTOMA – Silverfish	38
EPHEMEROPTERA – Mayflies	40
ODONATA – Dragonflies & damselflies	46
PLECOPTERA – Stoneflies	74
DERMAPTERA – Earwigs	80
ORTHOPTERA – Grasshoppers & crickets	84
EMBIOPTERA – Webspinners	115
MANTODEA – Mantids	116
PHASMIDA – Stick-insects	117
BLATTODEA – Cockroaches & termites	125
PSOCODEA – Lice, barklice & booklice	132
HEMIPTERA – Bugs	137
THYSANOPTERA – Thrips	228
NEUROPTERA – Lacewings & antlions	230
MEGALOPTERA – Alderflies	237
COLEOPTERA – Beetles	240
RAPHIDIOPTERA – Snakeflies	327
DIPTERA – Flies	330
MECOPTERA – Scorpionflies	365
TRICHOPTERA – Caddisflies	369
STREPSIPTERA – Stylops	377
SIPHONAPTERA – Fleas	378
LEPIDOPTERA – Butterflies & moths	380
HYMENOPTERA – Ants, wasps, bees & relatives	464
Status and legislation	570
Further reading and sources of useful information	571
Acknowledgements and photographic credits	574
Index of English and scientific names	579

The Species Accounts

The **species accounts** that follow vary in approach between **orders**, covering every species in some (e.g. dragonflies and damselflies (**Odonata**), grasshoppers and crickets (**Orthoptera**), butterflies (but not moths) (**Lepidoptera**) and some of the smaller orders), and giving an overview in the case of others (e.g. larger orders such as ants, wasps, bees and relatives (**Hymenoptera**), flies (**Diptera**) and beetles (**Coleoptera**). The individual sections and accounts are fully cross-referenced throughout. Where species are featured elsewhere in the book, only the English name is given. The text is presented in a consistent sequence and provides concise information covering the following, as appropriate:

Species Accounts

Legal protection

Actual size
(range)

Conservation status

Status in Great Britain and Ireland

English name



Scientific name

BL xx–xx mm. **ID** xxxx. **Cyc** xxxxx.

Hab xxxxx. **Fp** xxxxx. **Beh** xxxxx.

Dist xxxxx. **Host** (etc.) xxxxx. **SS** xxxxx.

An up-to-date **map** is included for almost all species that have a full species account (for the few that are not, the distribution is summarized). Coded as follows:

 Records
 Present but precise distribution not known

Phenology chart summarizing when adults may be seen: dark green shading is used to highlight the peak period(s); buff indicates usually not present or unlikely to be found.

VU  

Common



J F M A M J J A S O N D

Measurements: body length (**BL**) and/or wingspan (**WS**) or forewing length (**FWL**) (also shown as a bar either to the left of the species text or to the right of the map to indicate actual size).

Key identification features (ID): such as colour and physical characteristics

Life-cycle (Cyc): indicating years to maturity

Habitat (Hab): a summary of the type(s) of habitat in which the species is usually found

Foodplant(s) (Fp): specific or types of plant on which the insect is most likely to be found

Behaviour (Beh): where this is likely to be helpful for identification

Distribution (Dist): where information additional to that shown in the map is considered helpful

Host(s): Parasitoid(s) or Cleptoparasite(s) for species involved in parasitic relationships.

Similar species (SS): with an indication of the key identification features



Status in Great Britain and Ireland (see page 570)

A colour-coded **status box** is included above the map for species that are the subject of a full species account. This provides a concise summary of the species' overall status. Six broad categories are used:

Common	Immigrant
Local	Nationally Scarce
Introduced; status indicated	Rare (RDB1/2/3/k)

Legal protection (see page 571)

Species afforded legal protection are indicated as follows:

-  – Protected in Great Britain
-  – Protected in Ireland

Conservation status (see page 570)

The red "Rare" status box is further coded to indicate the conservation (or Red List) status of the species.

For those that have been assessed and are considered to be of conservation concern, an icon is shown. For species that are on the Irish Red List, the icon has a green border, as shown *below*:

RE	RE	Regionally Extinct
CR	CR	Critically Endangered
EN	EN	Endangered
VU	VU	Vulnerable
NT	NT	Near Threatened
DD	DD	Data Deficient

Other codes

- ♂ male
- ♀ female

ORDER ARCHAEOGNATHA

Bristletails

[Greek: *archaeo* = old; *gnatha* = jaw]

BI | 1 family [3 genera, 7 species]

W | 2 families [approx. 500 species]

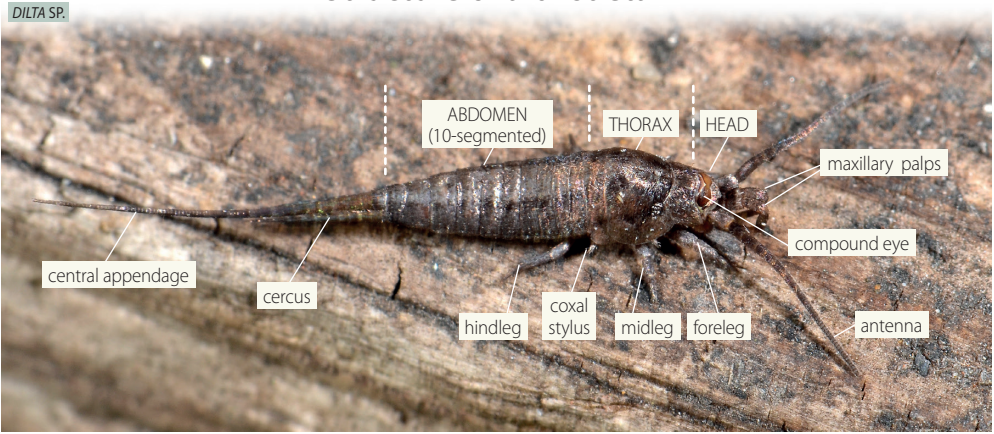
Bristletails are elongated, medium-sized, poorly studied, primitive, wingless insects, 6–25 mm long (up to ± 15 mm in Great Britain and Ireland), with a humped thorax and long appendage. Combined with the elongated pair of shorter cerci, it looks like they have three tails. The head has a pair of touching or near-touching, large, compound eyes, the shape of which helps to distinguish some genera; they also have ocelli. The mouthparts are directed downwards. A glossy appearance results from scales on the body, which may offer some protection against predators. They can also run fast and are able to jump several times their own body length, by flexing the abdomen backwards. British species belong to the family Machilidae; some species are rarely seen and have a restricted distribution. Males of most species attach sperm droplets to silken lines, or deposit these on the ground, attached to stalks, which the females need to locate. All stages feed on leaf-litter, algae, lichens and mosses, laying eggs that overwinter. Nymphs resemble miniature adults.

FINDING BRISTLETAILS The well-camouflaged bristletails are occasionally seen in leaf-litter or on vegetation. However, they are most likely to be seen under stones or on rocks above the high-water mark along the coast. Being mainly nocturnal, they are particularly obvious in torch-light. One rarity, Cave Bristletail (p. 37), is known to occur in caves, where it appears to at least overwinter.

Sea Bristletail on a rock at dusk.



Structure of a bristletail



FAMILY Machilidae (Machilids)

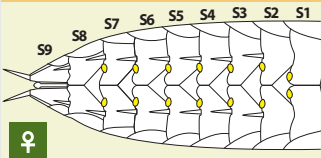
GUIDE TO GENERA | 3 BI

The largest of the two families in the Archaeognatha. These elongate, wingless insects with large eyes are cosmopolitan. Some species are restricted to rocky shorelines. The other family in the order (Meinertellidae) lacks scales at the base of hindlegs and antennae.

ANTENNAE short

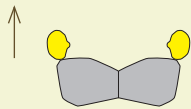
ABDOMEN [VENTRAL]

all segments with a pair of coxal vesicles (yellow)



EYES rectangular

FRONT OF HEAD



ocelli (YELLOW)
at outer edge of eyes

ANTENNAE
≤ ½ body length

Dilta

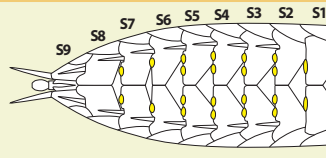
[4 species | 3 ILL.]

p. 36

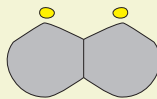
ANTENNAE long [beware, these may be partly broken off]

ABDOMEN [VENTRAL]

segments 2–5 with 2 pairs of coxal vesicles (yellow)



EYES rounded



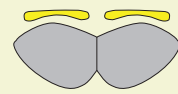
OCELLI (YELLOW)
slit-like and small

ANTENNAE
≈ body length; scaled

Trigoniophthalmus

[Cave Bristletail]

p. 37



OCELLI (YELLOW)
large; almost length of eyes

ANTENNAE
> body length; scaled only on two basal segments

Petrobius

[2 species | 2 ILL.]

p. 37

BRISTLETAILS WITH SHORT ANTENNAE

Dilta

4 spp. | 3 ILL.

Easily recognized by short antennae, British species are brown with glossy scales, some having dark mottling, including the antennae and appendage. **Cyc** Like all bristletails, post-hatching to adult takes a year or more; adults overwinter. **All *Dilta* species are very similar**; ♀s difficult to identify, only possible by minor technical differences in the genitalia; ♂s may be identified by hairs on the lateral surface of the **2nd segment of the labial palp** (examination at high magnification needed). The three species most likely to be encountered are shown here; the fourth, **Irish Bristletail** *Dilta saxicola* [N1] (BL 7–11 mm) is little known (initially reported from Howth Head, Dublin): ♂ lacks spine-like hairs on 2nd segment of labial palp.

Chater's Bristletail

Dilta chateri

BL ±10 mm. **ID** Brown. **Hab** Inland and coastal grassland, heathland and woodland with plenty of leaf-litter.

Dist Little-known, described in 1995; at present only known from parts of South Wales. **SS** Other *Dilta* species.



Heathland Bristletail

Dilta littoralis

BL 10–11 mm. **ID** Greyish-brown, with some darker markings. **Hab** Various inland and coastal heathland and grassland habitats. **SS** Other *Dilta* species.



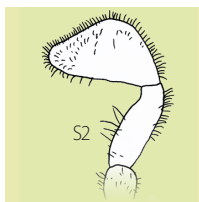
Southern Bristletail

Dilta hibernica

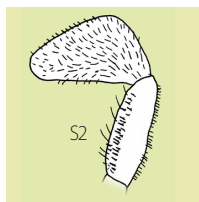
BL ±11 mm. **ID** Brown, rather plainer than other *Dilta* species. **Hab** Various inland and coastal habitats. **Dist** Also recorded in Ireland. **SS** Other *Dilta* species.



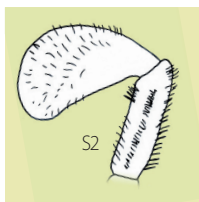
♂ LABIAL PALP 2ND SEGMENTS COMPARED



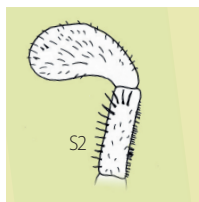
Chater's Bristletail
with few spine-like hairs



Southern Bristletail
with irregular pattern
of spine-like hairs



Heathland Bristletail
with group of ±10 central
spine-like hairs



Irish Bristletail
lacks spine-like hairs

BRISTLETAILS WITH LONG ANTENNAE

Petrobius

2 spp.

Easily recognized by the long antennae, well exceeding body length. Usually grey and variably mottled, including the antennae and appendage. **Cyc** Like all bristletails, post-hatching to adult takes a year or more; adults overwinter. The Sea Bristletail is the most widespread bristletail species in Great Britain & Ireland.

Both *Petrobius* species are very similar and sometimes occur together; ♂s distinguished by details of the underside of abdomen S8; ♀s by details of the antennae.

Sea Bristletail

Petrobius maritimus

BL 13–15 mm. **ID** Mottled grey.

Hab Mainly rocky coastal areas above high-water mark; inland in some western sites. **SS** Western Sea Bristletail, Cave Bristletail.

♀ **ANTENNAE** clearly ringed
♂ **SUBCOXAE** lacking rounded lobes



♀ **ANTENNAE**



Western Sea Bristletail

Petrobius brevistylis

BL 13–14 mm. **ID** Mottled grey.

Hab Rocky coastal areas above high-water mark. **SS** Sea Bristletail, Cave Bristletail.

♀ **ANTENNAE** plain
♂ **SUBCOXAE** with rounded lobes



♀ **ANTENNAE**



Trigoniophthalmus

1 sp.

Easily recognized by antennae about matching body length. The only British species is little known but otherwise looks similar to other bristletails. **Cyc** Like all bristletails, post-hatching to adult takes a year or more; adults overwinter.

Cave Bristletail

Trigoniophthalmus alternatus

BL ±10 mm. **ID** Mottled brown with irregular paler areas; can be dark.

Hab Known to hibernate in caves, including inland sites and presumably lives in rocky surrounds in warmer months. **SS** Sea bristletails.



Index

This index includes the English and scientific (*in italics*) names of all the insects in this book.

Bold black text highlights species that are the subject of a main species account.

Semibold text is used for species that are illustrated but not the subject of a full account.

Regular text is used for other species that are referred to in the book but not illustrated, and for English names of genera; regular numbers indicate pages where other key information may be found.

BOLD CAPITAL text is used for orders or higher taxonomic levels.

REGULAR CAPITAL text is used for subdivisions of orders.

BOLD SMALL CAPITAL text is used for families and REGULAR SMALL CAPITAL text for subfamilies.

Italicized numbers indicate photos of early life stages (larvae or nymphs).

A	Admiral, Red	390, 393, 392	Agriotes, Obscure	293
<i>Abax parallelepipedus</i>	—, White	390, 391	—, Pale	293
<i>Abia aenea</i>	<i>Adomerus biguttatus</i>	152	<i>Agriphila selasella</i>	420
<i>Abraxas grossulariata</i>	<i>Adrastus pallens</i>	291	— <i>tristella</i>	420
<i>Abrostola tripartita</i>	<i>Adscita geryon</i>	427	<i>Agrius convolvuli</i>	431
— <i>triplasia</i>	— <i>statices</i>	427	<i>Agrothereutes abbreviatus</i>	472
<i>Acalypta parvula</i>	<i>Aelia acuminata</i>	164	<i>Agrotis clavis</i>	454
<i>Acanthocinus aedilis</i>	<i>Aeshna affinis</i>	63	— <i>exclamationis</i>	454
<i>Acanthosoma haemorrhoidale</i>	— <i>caerulea</i>	62	<i>Agrypnus murinus</i>	295
ACANTHOSOMATIDAE ..	— <i>cyanea</i>	62	ALDERFLIES	14, 237
144, 145, 149	— <i>grandis</i>	64	Alderfly, Common	237, 239, 238
<i>Acanthoxyla geisovii</i>	— <i>isosceles</i>	64	—, Flowing Water	239, 238
25, 120	— <i>juncea</i>	63	—, Scarce	239, 238
— <i>inermis</i>	— <i>mixta</i>	63	<i>Alebra coryli</i>	214
25, 121	AESHNIDAE	24, 49, 60	<i>Aleyrodes proletella</i>	226
— <i>prasina</i>	<i>Agabus</i>	255	ALEYRODIDAE	222, 226
121	— <i>biguttatus</i>	260	<i>Allantus truncatus</i>	469
<i>Acericerus vittifrons</i>	— <i>brunneus</i>	260	<i>Allygus mixtus</i>	214
214	— <i>guttatus</i>	260	<i>Alosterna tabacicolor</i>	298
<i>Acheta domesticus</i>	— <i>sturmii</i>	260	<i>Alucita hexadactyla</i>	408
101	<i>Agapanthia cardui</i>	308	ALUCITIDAE	408
<i>Acilius</i>	— <i>villosoviridescens</i>	308	ALYDIDAE	146, 173
255	<i>Agapeta hamana</i>	419	<i>Alydus calcaratus</i>	173
— <i>canaliculatus</i>	<i>Agathomyia wankowiczii</i>	337	<i>Amara aenea</i>	272
259	<i>Agelastica alni</i>	317	<i>Amblyteles armatorius</i>	476
— <i>sulcatus</i>	<i>Agenioideus</i>	503	AMELETIDAE	41
259	— <i>cinctellus</i>	505	<i>Ammophila pubescens</i>	523
ACRIDIDAE	<i>Aglais io</i>	392	— <i>sabulosa</i>	523
86, 104	— <i>urticae</i>	23, 392	<i>Ampedus balteatus</i>	292
<i>Acrionicta aceris</i>	<i>Agonum marginatum</i>	273	— <i>cardinalis</i>	292
460	— <i>muelleri</i>	273	— <i>cinnabarinus</i>	293
— <i>alni</i>	<i>Agrius biguttatus</i>	244	— <i>elongatulus</i>	292
460	<i>Agriotes obscurus</i>	293	— <i>nigerrimus</i>	293
— <i>psi</i>	— <i>pallidulus</i>	293	— <i>pomorum</i>	292
460	<i>Agathomyia wankowiczii</i>	337	— <i>quercicola</i>	292
— <i>rumicis</i>	<i>Agelastica alni</i>	317	— <i>sanguinolentus</i>	292
460	<i>Agenioideus</i>	503		
— <i>tridens</i>	— <i>cinctellus</i>	505		
460	<i>Aglais io</i>	392		
<i>Acrossus rufipes</i>	— <i>urticae</i>	23, 392		
286	<i>Agonum marginatum</i>	273		
<i>Actenicerus sjaelandicus</i>	— <i>muelleri</i>	273		
291	<i>Agrius biguttatus</i>	244		
ACULEATES	<i>Agriotes obscurus</i>	293		
466, 479	— <i>pallidulus</i>	293		
<i>Adalia bipunctata</i>	— <i>sputator</i>	293		
309	<i>Agriotes, Common Brown</i>	293		
— <i>decempunctata</i>				
309				
<i>Adarrus ocellaris</i>				
214				
<i>Adela cuprella</i>				
415				
— <i>reaumurella</i>				
415				
ADELIDAE				
407, 415				
<i>Adelphocoris lineolatus</i>				
196				
ADEPHAGA				
242–243, 255				

<i>Amphimallon falleni</i>	284	ANDRENINAE	541, 562	ANTHOCORIDAE	147, 191
— <i>solstitiale</i>	284	<i>Andricus kollari</i>	477	<i>Anthocoris nemorum</i>	191
<i>Amphipyra berbera</i>	459	— <i>quercuscalicis</i>	477	<i>Anthomyia procellaris</i>	343
— <i>pyramidea</i>	459	<i>Aneurus laevis</i>	25, 148	Anthomyiid, Handsome	343
<i>Anabolia brevipennis</i>	373	<i>Anisodactylus poeciloides</i>	272	ANTHOMYIIDAE	343
— <i>nervosa</i>	373	ANISOLABIDIDAE	81	ANTHOMYIIDS	343
<i>Anacridium aegyptium</i>	104	<i>Anisosticta</i>		<i>Anthophila fabriciana</i>	416
<i>Anaglyptus mysticus</i>	303	<i>novemdecimpunctata</i>	313	<i>Anthophora plumipes</i>	550
<i>Anania hortulata</i>	420	<i>Anisotoma humeralis</i>	245	— <i>retusa</i>	550, 551
<i>Anarta myrtilli</i>	458	ANOBIID AND SPIDER BEETLES ..	247	ANTHRIBIDAE	254
<i>Anaspis frontalis</i>	253	<i>Anomala dubia</i>	283	Antlion, European	232
<i>Anaspis</i> , Hawthorn	253	<i>Anoplius</i>	503	—, Suffolk	22, 232
<i>Anastrangalia sanguinolenta</i>	296	— <i>concinus</i>	506	ANTLIONS	15, 22, 230, 231, 232
<i>Anatis ocellata</i>	310	— <i>infuscatus</i>	507	ANTS	11, 16, 20, 464, 470, 479, 490
<i>Anax ephippiger</i>	61	<i>Anoplius nigerrimus</i>	506	<i>Apamea monoglypha</i>	459
— <i>imperator</i>	24, 61	— <i>viaticus</i>	506	<i>Apatura iris</i>	391
— <i>junius</i>	61	<i>Anoplodera sexguttata</i>	296	<i>Aphaereta pallipes</i>	478
— <i>parthenope</i>	61	<i>Anoscopus albifrons</i>	215	<i>Aphantopus hyperantus</i>	399
<i>Ancistrocerus</i>	509	ANT-LIKE FLOWER BEETLES	252	APHELOCHEIRIDAE	142
— <i>gazella</i>	517	Ant, Black Bog	494, 495	<i>Aphelocheirus aestivalis</i>	142
— <i>nigricornis</i>	516	—, Black-headed Velvet	500, 501	Aphid, Common Lime	225
— <i>oviventris</i>	488	—, Chalk	493	—, Common Sycamore	225
— <i>parietinus</i>	517	—, Common Red	464, 490, 499	—, Dark Green Nettle	224
— <i>parietum</i>	517	—, Dark Guest	498	—, Giant Willow	141, 224
— <i>scoticus</i>	516	—, Hairy Wood	490, 494, 497	—, Large Pine	225
— <i>trifasciatus</i>	517	—, Humid	492, 493	—, Rose	225
<i>Andrena barbilabris</i>	568	—, Jet	492, 493	—, Tansy	224
— <i>bicolor</i>	543	—, Large Black	494, 495	—, Willow-Umbellifer	224
— <i>cineraria</i>	568	—, Large Velvet	489, 500	—, Apple Woolly	225
— <i>clarkella</i>	565	—, Leman's	494, 495	<i>Aphidecta obliterated</i>	314
— <i>dorsata</i>	563	—, Narrow-headed	494, 496	APHIDIDAE	222, 223
— <i>flavipes</i>	563	—, Red	498	APHIDS	222, 223
— <i>florea</i>	563	—, Red-barbed	494, 496	<i>Aphis urticata</i>	224
— <i>fulva</i>	564	—, Sabulet's Red	498, 499	<i>Aphodius fimetarius</i>	286
— <i>fuscipes</i>	544	—, Scottish Wood	494, 497	<i>Aphomia sociella</i>	414
— <i>haemorrhhoa</i>	562	—, Shining Guest	491, 497	<i>Aphrophora</i>	212
— <i>hattorfiana</i>	566	—, Slave-making	494, 496	— <i>alni</i>	213
— <i>labiata</i>	566	—, Small Black	20, 491, 492, 493	APHROPHORIDAE	210, 212
— <i>lapponica</i>	545	—, Small Sand	492, 493	APIDAE	20, 521, 538
— <i>marginata</i>	567	—, Small Velvet	500	APINAE	539, 543
— <i>minutula</i>	567	—, Southern Wood	468, 491,	APIONID WEEVILS	254
— <i>nigroaenea</i>	564		494, 496	APIONIDAE	254
— <i>nitida</i>	565	—, Turf	491, 498, 499	<i>Apis mellifera</i>	546
— <i>ovatula</i>	567	—, Wall	492	<i>Aplocera efformata</i>	439
— <i>scotica</i>	564	—, Woodland Red	491, 498	— <i>plagiata</i>	439
— <i>tarsata</i>	566	—, Yellow Meadow	20, 492	APOCRITA	466, 471–478
— <i>thoracica</i>	565	ANTHICIDAE	252	<i>Apoda limacodes</i>	422
— <i>vaga</i>	568	<i>Anthidium manicatum</i>	555	<i>Apoderus coryli</i>	254
— <i>wilkella</i>	567	<i>Anthocharis cardamines</i>	388	APOIDEA	479, 521

<i>Aporia crataegi</i>	387	<i>Asiraca clavicornis</i>	220	Beauty, Oak	440
<i>Aporophyla nigra</i>	461	ASSASSIN BUGS	144, 147, 188	—, Pale Brindled	440
<i>Aporus unicolor</i>	505	<i>Astata boops</i>	529	—, Pine	457
<i>Aposthonia ceylonica</i>	115	<i>Athalia rosae</i>	469	BED BUGS	144, 146, 190
<i>Apterygida media</i>	83	<i>Athous bicolor</i>	294	BEE-FLIES	332, 336, 349
APTERYGOTA	9	— <i>haemorrhoidalis</i>	294	Bee-fly, Dark-edged	336, 349, 350
<i>Aquarius najas</i>	206	<i>Athripsodes albifrons</i>	375	—, Dotted	349, 350
— <i>paludum</i>	206	— <i>bilineatus</i>	375	—, Heath	349, 350
<i>Arachnospila</i>	503	<i>Atlantoraphidia maculicollis</i>	329	—, Mottled	349
— <i>anceps</i>	504	<i>Atolmis rubricollis</i>	452	—, Western	349, 350
ARADIDAE	25, 144, 146, 148	<i>Atrecus affinis</i>	276	Bee-wolf	524, 537
<i>Aradus depressus</i>	148	ATTELABIDAE	254	Bee, Armed Nomad	566
ARCHAEOGNATHA	11, 34	AUCHENORRHYNCHA	141, 210	—, Banded Dark	555
Arches, Black	451	AUGER BEETLES	247	—, Barbut's Cuckoo Bumble	548
—, Buff	411, 428	<i>Auplopus carbonarius</i>	507	—, Bilberry Mining	545
—, Dark	459	<i>Autographa gamma</i>	454	—, Black-horned Nomad	544
—, Least Black	412, 463	AWL-FLIES	336	—, Bloomed Furrow	557
<i>Archiearis parthenias</i>	436	<i>Awl-fly, Common</i>	336	—, Blue Mason	552, 553
<i>Arctia caja</i>	448	B		—, Blunt-jawed Nomad	567
— <i>villica</i>	448	BACILLIDAE	119, 124	—, Box-headed Blood	557
<i>Arenocoris</i>	166	BACILLIDS	119, 124	—, Broad-banded Nomad	564
— <i>falleni</i>	169	<i>Bacillus rossius</i>	124	—, Bronze Furrow	557
— <i>waltlii</i>	169	— <i>whitei</i>	124	—, Brown-banded Carder	549
<i>Arge cyanocrocea</i>	467	<i>Backswimmer, Common</i>	24, 143,	—, Bryony Mining	562, 563
— <i>ochropus</i>	467	208, 209		—, Buff-tailed Bumble	546, 548
— <i>pagana</i>	467	—, Green	209	—, Buffish Mining	562, 564
— <i>rustica</i>	467	—, Peppered	209	—, Chocolate Mining	377, 466,
—, Oak	467	—, Pygmy	143	562, 564	
Argent & Sable	436	BACKSWIMMERS	143, 208	—, Clark's Mining	562, 565
—, Small	436	<i>Badister bullatus</i>	271	—, Cliff Mining	562, 565
ARGIDAE	467	BAETIDAE	41, 42	—, Coast Leaf-cutter	555
<i>Argogorytes</i>	524	<i>Baetis rhodani</i>	42	—, Common Carder	
— <i>fargeii</i>	534	<i>Bagworm, Black</i>	409	Bumble	546, 549
— <i>mystaceus</i>	534	<i>Barkbug, Common</i>	25, 148	—, Common Furrow	557
Argus, Brown	401, 403	BARKLICE	15, 132	—, Common Mourning	539, 551
—, Northern Brown	401, 403	<i>Barklouse, Blotched</i>	135	—, Common Yellow-face	561
—, Scotch	391, 398	—, Brown-banded	136	—, Dark Blood	557
<i>Argymnis paphia</i>	394	—, Cloudy Brown	136	—, Dark-winged Blood	557
<i>Arhopalus ferus</i>	307	—, Large	133, 136	—, Downland Furrow	538
— <i>rusticus</i>	307	—, Peters'	134	—, Early Bumble	546, 547
<i>Aricia agestis</i>	403	—, Stigma	135	—, Early Mining	562
— <i>artaxerxes</i>	403	—, Woodland	134	—, Early Nomad	565
<i>Arocatus longiceps</i>	172	—, Yellow	133, 135	—, Fabricius' Nomad	543
<i>Aromia moschata</i>	305	Base-banded furrow bees	538, 557	—, Flat-ridged Nomad	566
<i>Arterocephalus palaemon</i>	386	<i>Bathysolen nubilus</i>	168	—, Flavous Nomad	545
ARTHROPLEIDAE	41	Beachcomber	264	—, Geoffroy's Blood	538
<i>Asemum striatum</i>	306	Beauty, Brindled	440	—, Gold-fringed Mason	552, 553
ASILIDAE	332, 337, 360	—, Camberwell	390, 393	—, Gooden's Nomad	544
<i>Asilus crabroniformis</i>	361			—, Green Furrow	557

Bee, Grey-backed Mining ...	562, 568	Bee, Small Scissor	556	Beetle, Black-spotted Longhorn	300
—, Grey-haired Mining	562, 568	—, Small Shaggy	569	—, Black-streaked Dung	285
—, Gwynne's Mining	543	—, Small-fringed Mining ...	471, 562, 563	—, Black-striped Longhorn	298
—, Gypsy Cuckoo Bumble	549	—, Small-headed Resin	554	—, Black-tailed Click	292
—, Hairy-footed Flower	539, 550	—, Smeathman's Furrow	538	—, Blood-red Longhorn	296
—, Hairy-legged Mining	538, 542	—, Spotted Dark	554	—, Bloody-nosed	21, 319
—, Harebell Carpenter	556	—, Tawny Mining	562, 564	—, Blue False Darkling	251
—, Heath Bumble	546, 548	—, Tormentil Mining	562, 566	—, Blue Ground	269
—, Heather Mining	544	—, Tormentil Nomad	543	—, Blue Pot	320
—, Hill Cuckoo Bumble	546, 549	—, Tree Bumble	546, 549	—, Bog Reed	322
—, Honey	539, 546	—, Two-coloured Mason	552	—, Bombardier	264
—, Ivy	558, 559	—, Vestal Cuckoo Bumble ..	546, 549	—, Bordered Click	294
—, Kirby's Mason	554	—, Violet Carpenter	539, 552	—, Bronze Ground	268
—, Large Carder Bumble	549	—, Viper's Bugloss Mason	554	—, Brown Diving	260
—, Large Red-tailed Bumble	546, 547	—, Weltd Mason	554	—, Brown Leaf	318
—, Large Scabious Mining ..	562, 566	—, White-haired Mining ...	465, 562, 565	—, Brown Longhorn	306
—, Large Scissor	556	—, White-jawed Yellow-face	561	—, Brown Mould	250
—, Large Shaggy	569	—, White-tailed Bumble	539, 546, 548	—, Burnt Pine Longhorn	307
—, Large Sharp-tail	555	—, Wilke's Mining	562, 567	—, Cardinal Click	292
—, Large-headed Resin ..	20, 540, 554	—, Wool-carder	540, 555	—, Cereal Leaf	317
—, Lathbury's Nomad	568	—, Yellow Loosestrife	538, 542	—, Chequered Click	295
—, Little Blue Carpenter	539, 551	—, Yellow-legged Mining ...	562, 563	—, Chequered Rove	278
—, Little Dark	540, 554	BEES	16, 20, 464, 470, 479, 538	—, Cherrystone	256
—, Little Nomad	545	Beetbug, Spotted	183	—, Chine	270
—, Little Yellow-face	541	BEETBUGS	146, 183	—, Cliff Tiger	262
—, Long-horned	539, 550	Beetle, 2-spotted Ground	271	—, Common Black Pot	321
—, Marsham's Nomad	544	—, 12-spotted Diving	255, 256	—, Common Brown Click	294
—, Mountain Bumble.....	546, 547	—, Alder Leaf	317	—, Common Crawling Water	242
—, Orange-footed Furrow	557	—, Anchor	251	—, Common Darkling	252
—, Orange-legged Furrow	557	—, Ash Longhorn	305	—, Common Flat Bark	249
—, Orange-vented Mason	541	—, Asparagus	30, 317	—, Common Hide	245
—, Painted Nomad	544	—, Aspen leaf-miner	253	—, Common Horned Dung	287
—, Panzer's Nomad	545	—, Banks's Leaf	318	—, Common Marsh	244
—, Patchwork Leaf-cutter ...	540, 555	—, Bark Rove	275, 276	—, Common Red Soldier	247
—, Potter Flower	550, 551	—, Belted Click	292	—, Common Reed	315, 322
—, Red Mason	552, 553	—, Black Chequered	248	—, Common Shining Flower	249
—, Red-girdled Mining	562, 566	—, Black Click	293	—, Common Small Pot	321
—, Sandpit Blood	556	—, Black Oil	252, 289	—, Common Sun	272
—, Sandpit Mining	562, 568	—, Black Spruce Longhorn	307	—, Common Woodland Ground	272
—, Shiny-vented Sharp-tail	555	—, Black-and-red Pot	320	—, Copper Click	246, 291
—, Short-spined Nomad	566	—, Black-and-yellow Longhorn	253, 301	—, Cow Parsley Leaf	318
—, Shrill Carder Bumble	546, 547	—, Black-bellied Diving	242, 257	—, Crucifix Ground	271
—, Silver-sided Nomad	567	—, Black-centered Click	292	—, Dead-nettle Leaf	255, 317, 318
—, Six-banded Nomad	539, 550	—, Black-clouded Longhorn	303	—, Dull Red Click	292
—, Sleepy Carpenter	540, 556	—, Black-punctured Leaf	319	—, Dune Tiger	263
—, Small Garden Bumble ...	546, 548			—, Dusky Longhorn	307
—, Small Gorse Mining	562, 567			—, Fairy-ring Longhorn	298
—, Small Scabious Mining ..	562, 567			—, Flame-shouldered Blister	288

Beetle, Fleabane Tortoise	21, 316	Beetle, Lycoperd's Fungus	249	Beetle, Rosemary	318
—, Four-banded Longhorn	301	—, Margined Click	293	—, Rufous-shouldered Longhorn	303
—, Four-spotted Rove	275, 280	—, Margined Reed	322	—, Rugged Oil	289
—, Four-spotted Sap	250	—, Marsh Click	291	—, Rusty Red Click	290
—, Gloomy Carrion	21	—, Mediterranean Oil	289	—, Sausage Ground	268
—, Golden-bloomed Grey Longhorn	308	—, Metallic Horned Dung	287	—, Scarce Lesser Diving	259
—, Golden-dimpled Ground	270	—, Monoceros	252	—, Screech	242
—, Golden-haired Longhorn	301	—, Moorland Ground	243, 268	—, Semi-black Diving	259
—, Gravedigger Dung	286	—, Müller's Ground	273	—, Shaggy Tumbling Flower	251
—, Great Diving	257	—, Musk	305	—, Shining Green Ground	273
—, Great Silver Water	243	—, Necklace Ground	268	—, Short-necked Oil	289
—, Greater Thorn-tipped Longhorn	304	—, Northern Dune Tiger	263	—, Six-spotted Longhorn	296
—, Green Click	240, 295	—, Oak Jewel	244	—, Six-spotted Pot	320
—, Green Dock	319	—, Ochre	248	—, Skullcap Leaf	321
—, Green Pot	320	—, Orange-bodied Click	295	—, Small Black Longhorn	298
—, Green Tiger	243, 263	—, Orange-patched Flower	249	—, Small Bloody-nosed	319
—, Green Tortoise	316	—, Orange-shouldered Click	291	—, Small Click	291
—, Greyish Chequered Rove	278	—, Orange-spotted Fungus	250	—, Small Elm Bark	326
—, Hairy Click	294	—, Orange-tipped Rove	276	—, Small Green Pot	321
—, Hairy Rove	278	—, Orchid	244	—, Small Net-winged	246
—, Hazel Pot	320	—, Pale Tortoise	315	—, Small Striped Flea	316
—, Heart Longhorn	299	—, Pale-margined Dung	286	—, Smooth Ground	269
—, Heath Tiger	263	—, Pear Shorthorn	306	—, Spangled Button	262
—, Heather	321	—, Pectinate Click	291	—, Spangled Diving	258
—, Hornet Rove	276	—, Piles	255, 261	—, Speckled Longhorn	296
—, Hypericum Leaf	318	—, Pill	245	—, Spotted Diving	260
—, Hypericum Pot	320	—, Plain Reed	322	—, Spruce Shortwing	306
—, Jewel Reed	322	—, Plum Longhorn	305	—, Stag	244, 281
—, Joanna's Dung	287	—, Pondweed Reed	322	—, Strawberry Seed	273
—, King Alfred's	248	—, Pone's Click	294	—, Striped Thistle Longhorn	308
—, King Diving	256	—, Powder-post	247	—, Sturm's Diving	260
—, Knotgrass Leaf	318	—, Pride of Kent Rove	275, 280	—, Swollen-thighed	252
—, Kugelann's Ground	267	—, Pygmy False Click	246	—, Tanner	305
—, Ladder-marked Longhorn	302	—, Rainbow Leaf	319	—, Tawny Longhorn	297
—, Larch Longhorn	307	—, Rare Brown Longhorn	306	—, Thistle Leaf-miner	315
—, Large Black Longhorn	299	—, Red Dung	286	—, Thistle Tortoise	316
—, Large-grooved Diving	255, 258	—, Red Longhorn	299	—, Timberman	306
—, Lesser Diving	259	—, Red Poplar Leaf	241, 317	—, Tobacco-coloured Longhorn	298
—, Lesser Spangled Diving	258	—, Red Ship-timber	247	—, Transverse Diving	259
—, Lesser Stag	281	—, Red-and-blue Mushroom	248	—, Two-banded Longhorn	300
—, Lesser Thorn-tipped Longhorn	304	—, Red-bodied Click	292	—, Two-coloured Brown Click	294
—, Lesser-streaked Dung	285	—, Red-legged Seed	315	—, Two-spotted Diving	260
—, Lily	253, 317	—, Red-snouted Bark	252	—, Umbellifer Longhorn	308
—, Lime Longhorn	304	—, Red-thorax Click	290	—, V Click	294
—, Linnaeus's Longhorn	303	—, Red-thorax Ground	272	—, Variable Longhorn	300
—, Lunar Rove	276	—, Reddish-brown Dung	286	—, Viburnum	321
		—, Rhinoceros	280	—, Violet Click	291
		—, Ribbed Pine	300	—, Violet Ground	269
		—, Ridged Violet Ground	269		

INDEX

Beetle, Violet Leaf	319	BLASTOBASIDAE	408	BOMBYLIIDAE	332, 336, 349
—, Violet Oil	289	<i>Blastobasis adustella</i>	408	<i>Bombylius canescens</i>	350
—, Wasp	302	<i>Blatta orientalis</i>	127	— <i>discolor</i>	350
—, Wasp Nest	251	<i>Blattella germanica</i>	129	— <i>major</i>	350
—, Welsh Oak Longhorn	303	BLATTIDAE	126, 127	— <i>minor</i>	350
—, White-banded Longhorn	303	BLATTIDS	126, 127	BOOKLICE	15, 132
—, White-clouded Longhorn	304	BLATTODEA	12, 125	BOOKLICE AND BARKLICE	134
—, Willow Flea	316	BLISTER BEETLES	252, 288	BOREIDAE	368
—, Windsor Click	295	Blood bees	538, 556	Borer, Pine-stump	306
—, Yellow Pot	321	Blood-vein	434	—, Pinhole	323, 326
—, Yellow-haired Click	293	Blossom, Peach	429	—, Small Poplar	302
—, Yellow-patched Dung	243	BLOWFLIES	332, 342, 363	—, Tanbark	302
—, Yellowish Long-toed Water	246	Blowfly, Bird	363	<i>Boreus hyemalis</i>	368
BEE TLES	13, 21, 240	—, Yellow-faced	342, 363	BOSTRICHIDAE	247
<i>Bembecia ichneumoniformis</i>	424	Blue, Adonis	401, 404	BOT FLIES	342
<i>Bembidion saxatile</i>	271	—, Chalk Hill	401, 404	<i>Boudinotiana notha</i>	436
<i>Bembidion, Rock</i>	271	—, Common	383, 401, 404	<i>Brachinus crepitans</i>	264
<i>Bena bicolorana</i>	463	—, Holly	401, 405	BRACHYCENTRIDAE	370, 374
<i>Beosus maritimus</i>	175	—, Large	401, 406	<i>Brachycentrus subnubilus</i>	374
<i>Beraea pullata</i>	376	—, Long-tailed	401, 406	BRACHYCERA	333, 336–343, 348
<i>Beraea, Dark</i>	370, 376	—, Mazarine	406	<i>Brachymeria tibialis</i>	476
BERAEIDAE	370, 376	—, Short-tailed	401, 406	<i>Brachyopa scutellaris</i>	357
BERYTIDAE	144, 147, 184	—, Silver-studded	401, 405	<i>Brachyopa, Pale-shouldered</i>	357
<i>Berytinus hirticornis</i>	185	—, Small	401, 405	<i>Brachypaloides lentus</i>	357
— <i>minor</i>	185	BLUE/BLACK DAMSELFLIES	48, 54	<i>Brachyptera putata</i>	77
— <i>signoreti</i>	185	Bluebottle, Orange-bearded	363	— <i>risi</i>	77
Bethylid, Large-headed	480	BLUES	383, 401	<i>Brachytron pratense</i>	62
BETHYLIDAE	480	Blunthorn bees	538, 542	Braconid, Pale	478
BETHYLIDS	480	Blush, Maiden's	435	BRACONIDAE	478
<i>Bethylus cephalotes</i>	480	Boatman, Common Water	142, 208	BRACONIDS	478
<i>Bia candens</i>	470	<i>Bodilopsis rufa</i>	286	Brass, Burnished	456
— <i>sericea</i>	470	<i>Boloria euphrosyne</i>	395	—, Cryptic Burnished	456
<i>Bibio marci</i>	347	— <i>selene</i>	395	Brimstone	23, 387
BIBIONIDAE	332, 334, 347	<i>Bombus barbutellus</i>	548	Bristletail, Cave	35, 37
BIG-HEADED FLIES	337	— <i>bohemicus</i>	549	—, Chater's	36
BIPHYLLIDAE	248	— <i>hortorum</i>	548	—, Heathland	36
<i>Biphyllus lunatus</i>	248	— <i>humilis</i>	549	—, Irish	36
<i>Biston betularia</i>	440	— <i>hypnorum</i>	549	—, Sea	34, 35, 37
— <i>strataria</i>	440	— <i>jonellus</i>	548	—, Southern	36
BITING MIDGES	335	— <i>lapidarius</i>	547	—, Western Sea	37
<i>Bitoma crenata</i>	251	— <i>lucorum</i>	548	BRISTLETAILS	11, 34
<i>Bitoma, Saddle-backed</i>	251	— <i>monticola</i>	547	Broad-bar, Shaded	441
BLABERIDAE	126, 131	— <i>muscorum</i>	549	BROAD-HEADED BUGS	146, 173
BLACK ARCHES	412, 463	— <i>pascuorum</i>	549	Bronze, Geranium	401, 406
BLACK FUNGUS GNATS	335	— <i>pratorum</i>	547	<i>Brosicus cephalotes</i>	21, 266
BLACK SCAVENGER FLIES	340	— <i>rupestris</i>	549	BROWN LACEWINGS	231, 234
BLACK STONEFLIES	75, 79	— <i>sylvarum</i>	547	Brown, Lunar Marbled	446
Blackclock, Common	266	— <i>terrestris</i>	548	—, Marbled	446
—, Mitten	266	— <i>vestalis</i>	549	—, Meadow	391, 399

Brown, Small Dull	76	Bug, Nettle Plant	197	Bush-cricket, Southern Sickle-bearing	94
BROWNS	383, 390	—, Oak Plant	203	—, Speckled	87, 89, 92
Browntail	447	—, Orange-spotted Plant	196	BUSH-CRICKETS	87, 88
<i>Bruchus rufipes</i>	315	—, Pine-cone	176	BUTTERFLIES	18, 23, 380, 382
<i>Bryocoris pteridis</i>	201	—, Plain Tamarisk Plant	202	Button, Welshman's	369, 371, 374
Buff-tip	137, 446	—, Pondweed	142	<i>Byctiscus populi</i>	254
Buff, Clouded	450	—, Red Meadow Plant	194	BYRRHIDAE	245
Bug, Ant	173	—, Red-spotted Plant	195	<i>Byrrhus pilula</i>	245
—, Ant Damsel	192	—, Reedmace	176	BYTURIDAE	248
—, Ant Plant	202	—, River	142	<i>Byturus ochraceus</i>	248
—, Bat	190	—, Rosy Plant	196		
—, Becker's Plant	203	—, Saucer	143, 207	C	
—, Bed	190	—, Scarce Issid	221	<i>Cacyreus marshalli</i>	406
—, Beet Leaf	183	—, Short-winged Plant	201	Caddis, Land	22, 371
—, Black Plant	195	—, Sphagnum	143	CADDISFLIES	14, 22, 369
—, Birch Catkin	180	—, Spotted Plant	197	CAECILIUSIDAE	134, 135
—, Black-striped Damsel	192	—, Spruce-cone	176	CAENIDAE	41
—, Boat	166, 167	—, Streaked Plant	200	<i>Calambus bipustulatus</i>	291
—, Box	166, 168	—, Striped Plant	200	<i>Calamia tridens</i>	462
—, Bracken	201	—, Tarnished Plant	201	<i>Calathus melanocephalus</i>	272
—, Broad Damsel	193	—, Thick-antennae Plant	195	<i>Caliadurgus fasciatus</i>	505
—, Cinnamon Plant	202	—, Thread-legged	188	<i>Caliprobola speciosa</i>	354
—, Coastal Plant	201	—, Tree Damsel	192	<i>Calligypona reyi</i>	220
—, Colourful Tamarisk Plant	202	—, Trivial Plant	197	<i>Callimorpha dominula</i>	448
—, Common Damsel	193	—, Tunic Plant	199	<i>Calliphora vomitoria</i>	363
—, Common Flower	191	—, Western Conifer Seed	166	CALLIPHORIDAE	332, 342, 363
—, Common Issid	141, 210, 221	—, Woodroffe's Assassin	189	<i>Callitarea pudibunda</i>	447
—, Dock	25, 140, 165, 167	BUGS	13, 24, 25, 137	<i>Callophrys rubi</i>	402
—, Elongated Grass	199	<i>Bullatus</i> , Black-headed	271	<i>Calocoris roseomaculatus</i>	196
—, Fern	201	Bumble bees	539, 546	CALOPTERYGIDAE	48, 50
—, Four-spotted Plant	200	<i>Bupalus piniaria</i>	442	<i>Calopteryx splendens</i>	50
—, Glasswort Plant	203	BUPRESTIDAE	244	— <i>virgo</i>	50
—, Gorse Plant	203	Burgundy, Duke of	382, 400	<i>Calosoma inquisitor</i>	266
—, Gothic Plant	198	BURNET MOTHS	412, 426	<i>Calvia quattuordecimguttata</i>	312
—, Grey Damsel	192	Burnet, Five-spot	426	Camel-cricket, Greenhouse ..	87, 102
—, Hairy Plant	203	—, Narrow-bordered Five-spot ..	426	<i>Cameraria ohridella</i>	416
—, Handsome Plant	197	—, Six-spot	412, 426	<i>Campaea margaritaria</i>	442
—, Heath Assassin	189	—, Transparent	426	<i>Campogramma bilineata</i>	434
—, Heath Damsel	193	Burrower, Strand-line	21, 266	CANTHARIDAE	247
—, Jumping Plant	203	BURROWING DIVING BEETLES	242	<i>Canthophorus impressus</i>	152
—, Kalm's Plant	198	BURROWING SHIELDBUGS ..	145, 151	Caperer, Speckled	373
—, Knapweed Plant	199	Bush-cricket, Bog	25, 96	—, Streaked	373
—, Lime Plant	198	—, Dark	89, 97	CAPNIIDAE	75, 79
—, Long-legged Plant	198	—, Great Green	88, 90	<i>Capraiellus panzeri</i>	131
—, Lucerne	196	—, Grey	87, 89, 97	Capsid , Common Green	199
—, Marsh Damsel	193	—, Oak	89, 93	—, Delicate Apple	200
—, Meadow Plant	194	—, Roesel's	89, 96	—, Green Willow	199
—, Mediterranean Tamarisk Plant	202	—, Sickle-bearing	88, 94	—, Potato	197
		—, Southern Oak	89, 93		

<i>Capsodes gothicus</i>	198	<i>Cerceris arenaria</i>	532	<i>Chilacis typhae</i>	176
<i>Capsus ater</i>	195	— <i>ruficornis</i>	532	<i>Chilocorus bipustulatus</i>	313
CARABIDAE	243, 262	— <i>rybyensis</i>	532	— <i>renipustulatus</i>	313
<i>Carabus arvensis</i>	268	CERCOPOIDAE	210, 212	China-mark, Brown	409, 420
— <i>auratus</i>	270	<i>Cercopis vulnerata</i>	212	CHIRONOMIDAE	335
— <i>clatratus</i>	270	<i>Ceriagrion tenellum</i>	55	<i>Chironomus luridus</i>	335
— <i>glabratus</i>	269	<i>Ceropales</i>	503	<i>Chlaenius vestitus</i>	271
— <i>granulatus</i>	268	— <i>maculata</i>	507	<i>Chlodes sylvanus</i>	384
— <i>intricatus</i>	269	— <i>variegata</i>	507	<i>Chloromyia formosa</i>	352
— <i>monilis</i>	268	<i>Cerura erminea</i>	443	<i>Chloroperla tripunctata</i>	77
— <i>nemoralis</i>	268	— <i>vinula</i>	443	CHLOROPERLIDAE	75, 77
— <i>nitens</i>	270	<i>Cerylon ferrugineum</i>	250	CHLOROPIDAE	338
— <i>problematicus</i>	269	CERYLONID BEETLES	250	<i>Chlorops scalaris</i>	338
— <i>violaceus</i>	269	Cerylonid, Common	250	Chocolate-tip	446
<i>Carausius</i>	119	CERYLONIDAE	250	CHOREUTIDAE	408, 416
— <i>morosus</i>	123	<i>Cetonia aurata</i>	283	<i>Chorosoma schillingi</i>	172
CARDINAL BEETLES	252	<i>Chaetopteryx villosa</i>	373	<i>Chorthippus albomarginatus</i>	113
Cardinal, Black-headed	252	Chafer, Bee	282	— <i>brunneus</i>	112
Carpet, Beech-green	442	—, Brown	284	— <i>vagans</i>	113
—, Common	438	—, Downland	282	CHRYSIDIDAE	481
—, Garden	412, 438	—, Dune	283	CHRYSIDOIDEA	479, 480
—, Green	442	—, Garden	285	<i>Chrysis</i>	481
<i>Carpocoris purpureipennis</i>	161	—, Noble	283	— <i>angustula</i>	487
CARRION BEETLES	245	—, Rose	283	— <i>fulgida</i>	486
<i>Cassida flaveola</i>	315	—, Scarce Summer	284	— <i>ignita</i>	487
— <i>murraea</i>	21, 316	—, Scottish	282	— <i>illigeri</i>	488
— <i>rubiginosa</i>	316	—, Summer	244, 284	— <i>impressa</i>	487
— <i>viridis</i>	316	—, Variable	283	— <i>mediata</i>	487
Caterpillar-hunter	266	—, Welsh	285	— <i>ruddii</i>	488
<i>Catocala fraxini</i>	453	CHALCIDID WASPS	476	— <i>terminata</i>	488
— <i>nupta</i>	453	CHALCIDIDAE	476	— <i>viridula</i>	486
— <i>promissa</i>	453	<i>Chalcolestes viridis</i>	51	<i>Chrysolina americana</i>	318
— <i>sponsa</i>	23, 453	Character, Chinese	428	— <i>banksii</i>	318
<i>Cavariella pastinacae</i>	224	—, Hebrew	454	— <i>cerealis</i>	319
<i>Celastrina argiolus</i>	405	—, Setaceous Hebrew	413, 454	— <i>fastuosa</i>	318
<i>Centropitulum luteolum</i>	42	Chaser, Broad-bodied	24, 73	— <i>hyperici</i>	318
<i>Centrotus cornutus</i>	211	—, Four-spotted	73	— <i>oricalcia</i>	318
Centurion, Broad	352	—, Scarce	73	— <i>polita</i>	318
—, Twin-spot	352	CHASERS	49, 68	— <i>staphylaea</i>	318
<i>Ceraleptus lividus</i>	168	<i>Cheilosia grossa</i>	356	— <i>sturmi</i>	319
CERAMBYCIDAE	253, 296	— <i>illustrata</i>	356	— <i>populi</i>	317
<i>Ceramica pisi</i>	455	<i>Cheilosia</i> , Bumblebee	356	CHRYSEMELIDAE	253, 315
<i>Cerapteryx graminis</i>	455	—, Large Spring	356	<i>Chrysopa dorsalis</i>	233
<i>Ceratina</i>	539	<i>Chelostoma</i>	540	— <i>perla</i>	233
— <i>cyanea</i>	551	— <i>campanularum</i>	556	<i>Chrysoperla carnea</i>	233
CERATOPHYLLIDAE	379	— <i>florisomme</i>	556	— <i>lucasina</i>	233
<i>Ceratophyllus gallinae</i>	379	CHEQUERED BEETLES	248	CHRYSOPIIDAE	22, 231, 233
CERATOPOGONIDAE	335	CHEWING AND SUCKING LICE	133	<i>Chrysops caecutiens</i>	348
<i>Cerceris</i>	524	<i>Chiasmia clathrata</i>	437	<i>Chrysotoxum bicinctum</i>	353

<i>Chrysura</i>	481	<i>Clitarchus</i>	119	<i>Coelioxys conoidea</i>	555
— <i>hirsuta</i>	482	— <i>hookeri</i>	122	— <i>inermis</i>	555
— <i>radians</i>	482	<i>Cloeon</i>	42	<i>Coenagrion hastulatum</i>	57
Cicada, New Forest	210, 211	— <i>dipterum</i>	43	— <i>lunulatum</i>	57
CICADAS	210, 211	— <i>simile</i>	43	— <i>mercuriale</i>	57
<i>Cicadella viridis</i>	215	<i>Clonopsis gallica</i>	124	— <i>puella</i>	56
CICADELLIDAE	210, 214	<i>Clostera curtula</i>	446	— <i>pulchellum</i>	56
<i>Cicadetta montana</i>	211	<i>Closterotomus fulvomaculatus</i>	197	— <i>scitulum</i>	57
CICADIDAE	210, 211	— <i>norwegicus</i>	197	COENAGRIONIDAE	24, 48, 54
CICADOMORPHA	141	— <i>trivialis</i>	197	<i>Coenonympha pamphilus</i>	398
<i>Cicindela campestris</i>	263	CLOTHES MOTHS	407, 418	— <i>tullia</i>	398
— <i>hybrida</i>	263	Clown, Garden	245	COLEOPTERA	13, 21, 240
— <i>maritima</i>	263	CLUB-HORNED SAWFLIES	470	<i>Colias alfacariensis</i>	387, 388
— <i>sylvatica</i>	263	CLUB-HORNED WASPS	489, 501	— <i>croceus</i>	388
CID BEETLES	251	CLUB-TAILED DRAGONFLIES	49, 65	— <i>hyale</i>	387, 388
Ciid, Common	251	Club, Heart &	454	<i>Colletes</i>	541
CIIDAE	251	Clubtail, Common	49, 65	— <i>cunicularius</i>	558
<i>Cilix glaucata</i>	428	<i>Clusia flava</i>	339	— <i>daviesanus</i>	560
<i>Cimbex femoratus</i>	470	Clusiid, Yellow	339	— <i>floralis</i>	559
CIMBICIDAE	470	CLUSIIDAE	339	— <i>fodiens</i>	560
<i>Cimex lectularius</i>	190	CLUSIIDS	339	— <i>halophilus</i>	561
— <i>pipistrelle</i>	190	<i>Clytus arietis</i>	302	— <i>hederae</i>	559
CIMICIDAE	144, 146, 190	Coach-horse, Black	244	— <i>marginatus</i>	560
CIMICOMORPHA	144, 186	—, Devil's	279	— <i>similis</i>	560
<i>Cinara pinea</i>	225	COCCIDAE	222, 227	— <i>succinctus</i>	559
Cinbug, European	176	<i>Coccidula rufa</i>	314	Colletes, Bare-saddled	558, 560
Cinnabar	381, 413, 452	— <i>scutellata</i>	314	—, Davies'	558, 560
<i>Cionus hortulanus</i>	323	<i>Coccinella hieroglyphica</i>	310	—, Early	558
<i>Cirrhia icteritia</i>	456	— <i>magnifica</i>	310	—, Girdled	558, 559
<i>Cis boleti</i>	251	— <i>quinquepunctata</i>	310	—, Hairy-saddled	558, 560
CIXIIDAE	210, 218	— <i>septempunctata</i>	21, 310	—, Margined	558, 560
<i>Cixius cunicularius</i>	218	— <i>undecimpunctata</i>	310	—, Northern	558, 559
— <i>nervosus</i>	218	COCCINELLIDAE	250, 309	—, Sea Aster	558, 561
CLEARWING MOTHS	412, 424	Cockchafer	21, 284	COLLETINAE	541, 558
Clearwing, Currant	425	—, Northern	284	<i>Colocasia coryli</i>	459
—, Large Red-belted	425	Cockroach, American	128	Colonel, Common Green	352
—, Red-belted	425	—, Australian	128	<i>Colostygia olivata</i>	442
—, Red-tipped	425	—, Brown	128	— <i>pectinataria</i>	442
—, Sallow	425	—, Brown-banded	129	<i>Colymbetes fuscus</i>	258
—, Six-belted	424	—, Dusky	130	Comb-horn, Giant Sabre	344
—, Thrift	424	—, Garden	130	—, Lesser Sabre	344
—, Yellow-legged	412, 425	—, German	129	—, Orange-sided	346
Cleg, Black-horned	348	—, Italian	130	—, Twin-mark	346
—, Notch-horned	348	—, Lesser	125, 131	Comma	390, 393
<i>Cleptes</i>	481	—, Oriental	127	COMMON SAWFLIES	468
— <i>nitidulus</i>	488	—, Surinam	126, 131	Companion, Burnet	449
— <i>semiauratus</i>	488	—, Tawny	130	Conch, Common Yellow	419
CLERIDAE	248	—, Variable	129	Cone-head, Large	88, 94
CLICK BEETLES	21, 246, 290	COCKROACHES	12, 125	—, Long-winged	84, 89, 95

Cone-head, Short-winged	89, 95	Cranefly, White-legged	334, 347	<i>Cupido minimus</i>	405
CONIOPTERYGIDAE	231, 236	<i>Craniophora ligustri</i>	462	<i>Curculio glandium</i>	325
<i>Conocephalus dorsalis</i>	95	CRAWLING WATER BEETLES	242	— <i>nucum</i>	325
— <i>fuscus</i>	95	<i>Creophilus maxillosus</i>	278	CURCULIONIDAE	254, 323
<i>Conomelus anceps</i>	220	<i>Crepidodera aurata</i>	316	<i>Cyaniris semiargus</i>	406
Conopid, Common	338	Cricket, Saul's Water	205	<i>Cychnus caraboides</i>	264
CONOPIDAE	338	—, Water	143, 205	<i>Cyclophora albipunctata</i>	435
<i>Conwentzia psociformis</i>	236	CRICKETS	12, 25, 84, 87, 98	— <i>pendularia</i>	435
Copper, Large	406	<i>Crioceris asparagi</i>	317	— <i>porata</i>	435
—, Small	383, 401, 403	<i>Criorhina berberina</i>	359	— <i>punctaria</i>	435
COPPERS	383, 401	<i>Criorhina</i> , Common	359	CYDNIDAE	145, 151
<i>Coptosoma scutellatum</i>	145	<i>Crocallis dardoinaria</i>	441	<i>Cylindera germanica</i>	262
<i>Coranarta cordigera</i>	458	— <i>elinguaria</i>	441	CYNIPIDAE	477
<i>Coranus subapterus</i>	189	<i>Crocothermis erythraea</i>	68	<i>Cynomya mortuorum</i>	363
— <i>woodroffei</i>	189	<i>Crossocerus</i>	525	<i>Cyphostethus tristriatus</i>	149
<i>Cordulegaster boltonii</i>	65	— <i>annulipes</i>	527		
CORDULEGASTRIDAE	49, 65	— <i>cetratus</i>	527	D	
<i>Cordulia aenea</i>	67	— <i>megacephalus</i>	527	Dagger, Dark	460
CORDULIIDAE	48, 66	<i>Crossocerus</i> , Black-and- white-legged	527	—, Grey	413, 460
COREIDAE	25, 147, 165	—, Large-headed	527	<i>Dalopius marginatus</i>	293
<i>Coremacera marginata</i>	340	—, Ring-legged	527	DAMSEL BUGS	147, 191
<i>Coreus marginatus</i>	25, 167	<i>Cryptocephalus aureolus</i>	320	DAMSELFIES	15, 24, 46
<i>Coriomeris denticulatus</i>	168	— <i>bipunctatus</i>	320	Damselfly, Azure	54, 56
<i>Corixa punctata</i>	208	— <i>coryli</i>	320	—, Blue-tailed	54, 59
CORIXIDAE	142, 208	— <i>fulvus</i>	321	—, Common Blue	47, 54, 56
<i>Corizus hyosciami</i>	172	— <i>hypochaeridis</i>	321	—, Dainty	54, 57
Corollae, Migrant	333	— <i>labiatus</i>	321	—, Emerald	48, 53, 52
Coronet	462	— <i>moraei</i>	320	—, Irish	54, 57
<i>Cosmia trapezina</i>	457	— <i>parvulus</i>	320	—, Large Red	24, 48, 54, 55
COSSIDAE	411, 422	— <i>pusillus</i>	321	—, Northern	54, 57
<i>Cossus cossus</i>	23, 422	— <i>sexpunctatus</i>	320	—, Red-eyed	54, 58
<i>Cotesia</i>	478	<i>Cryptocheilus notatus</i>	504	—, Scarce Blue-tailed	54, 59
<i>Crabro</i>	524	CRYPTOPHAGIDAE	249	—, Scarce Emerald	52
— <i>cribrarius</i>	533	<i>Cryptophagus lycoperdi</i>	249	—, Small Red	54, 55
— <i>peltarius</i>	533	<i>Ctenicera cuprea</i>	291	—, Small Red-eyed	54, 58
— <i>scutellatus</i>	533	— <i>pectinicornis</i>	291	—, Southern	54, 57
CRABRONIDAE	521, 524	<i>Ctenocephalides felis</i>	379	—, Southern Emerald	52, 53
CRAMBID MOTHS	409, 420	<i>Ctenolepisma lineata</i>	39	—, Variable	48, 54, 56
CRAMBIDAE	409, 420	— <i>longicaudata</i>	39	—, White-legged	48, 53
Cranefly, Black-striped	344	<i>Ctenophora</i>	343	—, Willow Emerald	52, 53, 51
—, Bog	345	— <i>pectinicornis</i>	346	—, Winter	51
—, Common	345	CUCKOO WASPS	481	<i>Danaus plexippus</i>	393
—, Eyed	334	CUCUJIDAE	249	DANCE FLIES	337
—, Four-spotted	346	<i>Cucullia verbasci</i>	457	Dark bees	540, 554
—, Giant	332, 344	<i>Culex pipiens</i>	335	DARKLING BEETLES	252
—, Orange-marked	347	CULICIDAE	335	Darner, Common Green	60, 61
—, Painted	334	<i>Culicoides impunctatus</i>	335	Dart, Heart &	454
—, September	333, 334, 345	<i>Cupido argiades</i>	406	Darter, Banded	69
—, Short-winged	345			—, Black	69, 71

Darter, Common	69, 70	<i>Dilta littoralis</i>	36	DRYINIDAE	480
—, Red-veined	69, 71	— <i>saxicola</i>	36	DRYINIDS	480
—, Ruddy	49, 69, 70	<i>Dineura virididorsata</i>	469	<i>Dryinus collaris</i>	480
—, Scarlet	68	<i>Dinocras cephalotes</i>	79	<i>Drymonia dodonaea</i>	446
—, Vagrant	69	<i>Dioctria rufipes</i>	361	— <i>ruficornis</i>	446
—, White-faced	72	<i>Diodontus</i>	524	<i>Drymus brunneus</i>	178
—, Yellow-winged	69	— <i>minutus</i>	525	<i>Dryomyza analis</i>	340
DARTERS	49, 68	<i>Dipolepis rosae</i>	477	DRYOMYZID FLIES	340
DARWIN WASPS	472	<i>Dipogon</i>	503	DRYOMYZIDAE	340
DASCILLIDAE	244	— <i>variegatus</i>	506	<i>Dryophilacoris</i>	
<i>Dascillus cervinus</i>	244	DIPTERA	17, 19, 330	— <i>flavoquadrinaculatus</i>	200
<i>Dasygoda</i>	538	<i>Ditropis pteridis</i>	220	DRYOPIDAE	246
— <i>hirtipes</i>	542	DIVING BEETLES	21, 242, 255	<i>Dryops luridus</i>	246
<i>Decticus verrucivorus</i>	91	<i>Dolerus madidus</i>	468	<i>Drypta dentata</i>	270
Deerfly, Splayed	348	<i>Dolichozepe</i>	343	Dun-bar	457
<i>Deilephila elpenor</i>	433	DOLICHOPODIDAE	337	Dun, Claret	44
— <i>porcellus</i>	433	<i>Dolichovespula media</i>	515	—, Ditch	44
DELPHACIDAE	210, 220	— <i>norwegica</i>	514	—, Large Brook	43
Demoiselle, Banded	48, 50	— <i>saxonica</i>	515	—, Pale Evening	42
—, Beautiful	50	— <i>sylvestris</i>	514	—, Scarce Yellow May	43
DEMOISELLES	48, 50	<i>Dolycoris baccarum</i>	160	—, Sepia	40, 41, 44
<i>Denticollis linearis</i>	294	<i>Donacia marginata</i>	322	—, Tiny Sulphur	42
<i>Depressaria daucella</i>	409	— <i>simplex</i>	322	—, Yellow May	41, 43
DEPRESSARIIDAE	409	— <i>versicolorea</i>	322	DUNGFLIES	343
<i>Deraeocoris ruber</i>	195	— <i>vulgaris</i>	322	Dungfly, Yellow	343
DERMAPTERA	12, 80	DOR BEETLES	245	<i>Dusona falcator</i>	472
DERMESTIDAE	247	Dor, Common Dumble	245	Dweller, Mud	261
<i>Diachrysis chrysitis</i>	456	<i>Dorcus parallelipedus</i>	281	—, Sooty Mud	261
<i>Diachrysis stenochrysis</i>	456	<i>Doros profuges</i>	354	<i>Dypterygia scabriuscula</i>	455
<i>Diacollomera fascelina</i>	447	Dot, Straw	451	<i>Dyroderes umbraculatus</i>	161
<i>Diacrisia sannio</i>	450	DOWD MOTHS	408	<i>Dysmachus trigonus</i>	360
DIAMOND-BACK MOTHS	408, 415	Dowd, Dingy	408	DYTISCIDAE	21, 242, 255
<i>Diaphora mendica</i>	450	DRAGONFLIES	15, 24, 46	<i>Dytiscus</i>	255
<i>Diastata nebulosa</i>	339	Dragonfly, Emperor	24, 46, 60, 61	— <i>dimidiatus</i>	256
Diastatid, Patched	339	—, Golden-ringed	49, 65	— <i>marginalis</i>	257
DIASTATIDAE	339	—, Hairy	60, 63, 62	— <i>semisulcatus</i>	257
DIASTATIDS	339	<i>Drepana falcataria</i>	428	E	
<i>Dicranoccephalus agilis</i>	174	<i>Drepanopteryx phalaenoides</i>	235	<i>Earias clorana</i>	419
— <i>medius</i>	174	DREPANIDAE	411, 428	Earwig, Bone-house	81
<i>Dictenidia</i>	343	<i>Drepanosiphum platanoidis</i>	225	—, Common	80, 82
— <i>bimaculata</i>	346	DRILIDAE	246	—, Giant	81
<i>Dictyonota fuliginosa</i>	187	<i>Drilus flavescens</i>	246	—, Lesne's	83
— <i>strichnocera</i>	187	Drinker	430	—, Lesser	81
<i>Distrammena asynamora</i>	102	<i>Dromius quadrimaculatus</i>	274	—, Ring-legged	81
DIGGER WASPS	521, 524	Dronefly	19, 359	—, Short-winged	83
<i>Dilophus febrilis</i>	347	—, Large Spotted-eyed	359	EARWIGS	12, 80
<i>Dilta</i>	35	—, Small Spotted-eyed	359	<i>Ecdyonurus torrentis</i>	43
— <i>chateri</i>	36	DROSOPHILIDAE	339	Échasseur, Beech	339
— <i>hibernica</i>	36	Dryinid, Collared	480		

INDEX

<i>Echthrus reluctator</i>	474	EMPEROR MOTHS	410, 427	<i>Eriogaster lanestrus</i>	429
<i>Ectemnius</i>	524	Emperor, Lesser	60, 61	<i>Eriosoma lanigerum</i>	225
— <i>cavifrons</i>	535	—, Purple	390, 391	<i>Eristalinus aeneus</i>	359
— <i>cephalotes</i>	535	—, Vagrant	60, 61	— <i>sepulchralis</i>	359
— <i>continuus</i>	535	<i>Empicoris vagabundus</i>	188	<i>Eristalis tenax</i>	19, 359
— <i>lituratus</i>	535	EMPIDIDAE	337	ERMEL MOTHS	408, 417
— <i>rubicola</i>	535	<i>Empis tessellata</i>	337	Ermel, Dotted	408, 417
<i>Ectemnius</i> , Bramble	535	<i>Empusa pennata</i>	116	ERMINE MOTHS	407, 417
—, Common	535	<i>Emus hirtus</i>	280	Ermine, Buff	450
—, Garden	535	<i>Enallagma cyathigerum</i>	56	—, Spindle	407, 409, 417
—, Large	535	End-banded furrow bees	538, 557	—, White	450
—, Woodland	535	ENDOMYCHIDAE	250	EROTYLIDAE	248
ECTOBIIDAE	126, 129	<i>Endomychus coccineus</i>	250	<i>Erynnis tages</i>	386
<i>Ectobius lapponicus</i>	130	ENDOPTERYGOTA	9	<i>Erythromma najas</i>	58
— <i>montanus</i>	130	ENDROMIDAE	410, 427	— <i>viridulum</i>	58
— <i>pallidus</i>	130	<i>Endromis versicolora</i>	427	<i>Esperia comma</i>	385
— <i>vittiventris</i>	130	<i>Endrosia sarcitrella</i>	418	— <i>sulphurella</i>	418
ECTOPSOCIDAE	134	<i>Enicospilus ramidulus</i>	475	<i>Ethmia dodecea</i>	417
<i>Ectopsocus petersi</i>	134	<i>Enoicyla pusilla</i>	22, 371	ETHMIIDAE	408, 417
EGGAR MOTHS	411, 429	<i>Enoplops scapha</i>	167	<i>Euborellia annulipes</i>	81
Eggar, Grass	430	<i>Epeolus</i>	538	<i>Eucallipterus tiliae</i>	225
—, Oak	411, 430	— <i>cruciger</i>	551	<i>Eucera longicornis</i>	550
—, Small	429	— <i>variegatus</i>	551	<i>Euclidia glyphica</i>	449
<i>Eilema lurideola</i>	452	<i>Epeolus</i> , Black-thighed	551	<i>Euclidia mi</i>	449
<i>Elampus</i>	481	—, Red-thighed	539, 551	EUCNEMIIDAE	246
— <i>foveatus</i>	482	<i>Ephemera danica</i>	24, 45	<i>Euconomelus lepidus</i>	220
— <i>panzeri</i>	482	— <i>lineata</i>	45	<i>Eumenes</i>	509
<i>Elaphrus cupreus</i>	265	— <i>vulgata</i>	45	— <i>coarctatus</i>	520
— <i>riparius</i>	265	<i>Ephemerella notata</i>	44	— <i>papillarius</i>	520
<i>Elasmostethus interstinctus</i>	150	EPHEMERELLIDAE	41, 44	<i>Euodynerus quadrifasciatus</i>	509
<i>Elasmucha ferrugata</i>	150	EPHEMERIDAE	24, 41, 45	<i>Eupelix cuspidata</i>	215
— <i>grisea</i>	150	EPHEMEROPTERA	14, 24, 40	<i>Eupeodes corollae</i>	333
<i>Elater ferrugineus</i>	290	<i>Ephialtes manifestator</i>	476	EUPHASMATODEA	119
ELATERIDAE	21, 246, 290	EPHYDRIDAE	338	<i>Euphydryas aurinia</i>	396
<i>Elateroides dermestoides</i>	247	<i>Epiphragma ocellare</i>	334	<i>Eupithecia centaureata</i>	438
<i>Elodes minutus</i>	244	<i>Epiphyas postvittana</i>	419	— <i>nanata</i>	438
<i>Elophila nymphaeata</i>	420	<i>Epirrhoe alternata</i>	438	<i>Euplagia quadripunctaria</i>	448
<i>Ematurga atomaria</i>	437	— <i>tristata</i>	436	<i>Euproctis chryssorrhoea</i>	447
EMBIOPTERA	11, 115	<i>Episyron</i>	503	— <i>similis</i>	447
<i>Emblethis denticollis</i>	177	— <i>gallicum</i>	504	<i>Euroleon nostras</i>	22, 232
— <i>griseus</i>	177	— <i>rufipes</i>	507	<i>Eurydema</i>	157
EMERALD DAMSELFLIES	48, 51	<i>Episyrrhus balteatus</i>	354	— <i>dominulus</i>	158
EMERALD DRAGONFLIES	48, 66	<i>Erannis defoliaria</i>	439	<i>Eurydema oleracea</i>	158
Emerald, Brilliant	66, 67	<i>Erebia aethiops</i>	398	— <i>ornata</i>	158
—, Downy	48, 66, 67	— <i>epiphron</i>	398	<i>Eurygaster</i>	154
—, Large	412, 442	EREBIDAE	23, 413, 447	— <i>austriaca</i>	155
—, Light	442	<i>Eremobia ochroleuca</i>	456	— <i>maura</i>	155
—, Northern	66, 67	<i>Eremocoris plebejus</i>	182	— <i>testudinaria</i>	155
<i>Emmelina monodactyla</i>	421	<i>Eriocampa ovata</i>	468	<i>Eurynebria complanata</i>	264

<i>Euthrix potatoria</i>	430	Fly, Forest	343	Fritillary, Dark Green	390, 394
<i>Evacanthus interruptus</i>	215	—, Four-spotted	340	—, Glanville	390, 396
<i>Evagetes</i>	503	—, Horse Bot	342	—, Heath	390, 396
— <i>crassicornis</i>	504	—, Ladder Grass	338	—, High Brown	390, 394
<i>Exochomus</i>		—, Large Narcissus	358	—, Marsh	390, 396
<i>quadripustulatus</i>	313	—, Mantis	338	—, Pearl-bordered	390, 395
<i>Eysarcoris aeneus</i>	159	—, Mosaic Snail-killing	340	—, Queen of Spain	390, 393
		—, Moustached	362	—, Silver-washed	390, 394
		—, Noon	362	—, Small Pearl-	
		—, Orange Fungi	340	bordered	383, 390, 395
<i>Fabriciana adippe</i>	394	—, Semaphore	337	Froghopper, Common ..	25, 210, 213
FALSE BLISTER BEETLES	252	—, Spanish	288	—, Lined	213
FALSE CLICK BEETLES	246	—, Speckled Signal	341	—, Red-and-black	210, 212
FALSE DARKLING BEETLES	251	—, St Mark's	347	FROGHOPPERS	210, 212
FALSE FIREFLY BEETLES	246	—, Stable	342, 362	FRUIT FLIES	339
FALSE FLOWER BEETLES	253	—, Variegated Fruit	339	FRUITWORM BEETLES	248
FALSE SKIN BEETLES	248	—, Waved Picture-winged	341	FULGOROMORPHA	141
<i>Fannia lustrator</i>	342	—, Willow	76	FUNGUS GNATS	335
FANNIDAE	342	—, Yellow Flat-footed	337	FUNGUS WEEVILS	254
<i>Favonius quercus</i>	402	Flybug	188	<i>Furcula furcula</i>	446
FEBRUARY REDS	75, 77	FOLD-WINGED CRANEFLIES	332,	FUSE-HORNED SAWFLIES	467
Feline	443		334, 347		
<i>Ferdinandea cuprea</i>	355	Fool, Bearded	339		
Festoon	411, 422	Footman, Common	413, 452		
Field-cricket	87, 98, 100	—, Red-necked	452	G	
—, Southern	98, 100	—, Rosy	452	<i>Galeruca laticollis</i>	319
Firebrat	38, 39	Forester	412, 427	— <i>tanaceti</i>	319
Firebug	173	—, Cistus	427	Galeruca, Rare	319
FIREBUGS	144, 148, 175	—, Scarce	427	GALL WASPS	477
Firefly, Brown False	246	FORESTER MOTHS	412, 426	Gall, Common Spangle	477
FLAT BARK BEETLES	249	<i>Forficula auricularia</i>	82	—, Knopper	477
FLAT FLIES	343	— <i>dentata</i>	82	—, Silk Button Spangle	477
Flat-body, Dingy	409	— <i>lesnei</i>	83	<i>Gampsocoris punctipes</i>	184
FLAT-FOOTED FLIES	337	FORFICULIDAE	81, 82	<i>Gargara genistae</i>	211
Flatbug, Pale-shouldered	148	<i>Formica</i>	491	<i>Gasterophilus intestinalis</i>	342
FLATBUGS	144, 146, 148	— <i>aquilonia</i>	497	GASTERUPTIID WASPS	478
Flea, Cat	378, 379	— <i>exsecta</i>	496	GASTERUPTIIDAE	478
—, Hen	379	— <i>fusca</i>	495	<i>Gasteruption assectator</i>	478
—, Human	379	— <i>lemani</i>	495	— <i>jaculator</i>	478
—, Snow	368	— <i>lugubris</i>	497	<i>Gastrodes abietum</i>	176
FLEAS	11, 378	— <i>picea</i>	495	— <i>grossipes</i>	176
FLESH FLIES	342	— <i>rufa</i>	496	<i>Gastropacha quercifolia</i>	23, 430
FLIES	17, 19, 330	— <i>rufibarbis</i>	496	<i>Gastrophysa viridula</i>	319
Flower bees	539, 550	— <i>sanguinea</i>	496	Gatekeeper	383, 391, 399
FLOWER BUGS	147, 191	FORMICIDAE	20, 490	GELECHIID MOTHS	408, 417
Fly, Black-faced Rust	340	FORMICINAE	490–491	GELECHIIDAE	408, 417
—, Common Dance	337	FORMICOIDEA	479, 489	<i>Gelis areator</i>	472
—, Common Fever	335, 347	<i>Formicoxenus nitidulus</i>	497	Gem, Black-horned	332
—, Common Sponge	235	FRTILLARIES	383, 390	General, Banded	351
—, Flesh	342			—, Clubbed	351
				—, Flecked	332, 351

INDEX

General, Long-horned	351	<i>Grammoptera ustulata</i>	297	Groundbug, Decorated	180
<i>Geometra papilionaria</i>	442	Grammoptera, Black	297	—, Dune	179
GEOMETRIDAE	412, 434	—, Burnt-tip	297	—, Eyed	182
GEOMETRIDS	412, 434	—, Common	297	—, Fleabane	181
<i>Geomyza tripunctata</i>	340	Grannom	370, 374	—, Folkestone	176
<i>Geotomus petiti</i>	151	<i>Graphocephala fennahi</i>	216	—, Glossy	183
— <i>punctulatus</i>	151	<i>Graphoderus</i>	255	—, Hairy	182
<i>Geotrupes spiniger</i>	245	— <i>cinereus</i>	258	—, Heath	179
GEOTRUPIDAE	245	— <i>zonatus</i>	258	—, Heather	180
GERRIDAE	142, 206	<i>Graphopsocus cruciatus</i>	135	—, Nettle	25, 176
<i>Gerris lacustris</i>	206	<i>Graptopeltus lynceus</i>	182	—, Oval	177
GIANT COCKROACHES	126, 131	GRASS FLIES	338	—, Plane	172
GIANT LACEWINGS	231, 236	Grass-veneer, Common	420	—, Red-winged	183
<i>Glaphyra umbellatarum</i>	306	Grass-veneer, Pale-streak	420	—, Saltmarsh	175
Glider, Wandering	68	Grass, Knot	460	—, Short-winged	179
<i>Glischrochilus hortensis</i>	250	Grassbug, Timothy	196	—, Sphagnum	177
Glory, Kentish	410, 427	Grasshopper, Common		—, Spiny	182
Glow-worm	21, 247	Green	106, 111	—, Stalked-eyed	175
GLOW-WORMS	247	Grasshopper, Egyptian	104	—, Storksbill	178
<i>Glyphotaenius pellucidus</i>	373	—, Field	107, 112	—, Straw	177
Gnat, Orange-banded Fungus	335	—, Heath	107, 113	—, Thomson's	180
—, Yellow-bodied Black Fungus	335	—, Large Marsh	85, 104, 105	—, Ullrich's	179
<i>Gnorimus nobilis</i>	283	—, Lesser Marsh	107, 113	—, Wetland	177
— <i>variabilis</i>	283	—, Lesser Mottled	110	—, White-spotted	175
GOAT MOTHS	411, 422	—, Meadow	86, 106, 109	—, Wolff's	181
<i>Goera pilosa</i>	374	—, Mottled	104, 108	GROUNDBUGS	147, 175
GOERIDAE	370, 374	—, Rufous	104, 108	Groundhopper, Cepero's	114
GOLD MOTHS	407	—, Stripe-winged	106, 110	—, Common	86, 114
Gold, Common Purple &	421	—, Woodland	106, 111	—, Slender	114
—, Purple-bordered	434	GRASSHOPPERS 12, 25, 84, 86, 104		GROUNDHOPPERS	86, 114
—, Scarce Purple &	421	Grayling	391, 400	Groundling, Chestnut	417
—, Small Purple &	421	GREEN LACEWINGS	231, 233	—, Crescent	408, 417
—, Yellow-barred	407	Green, Burren	462	GRYLLIDAE	87, 98
GOLDEN-RINGED		Greenbottle, Common	331, 363	<i>Grylloides sigillatus</i>	101
DRAGONFLIES	49, 65	Greenclock, Copper	267	— <i>supplicans</i>	101
Goldsmith	270	—, Heath	267	<i>Gryllotalpa gryllotalpa</i>	25, 103
—, Heath	270	—, Rainbow	267	— <i>quindecim</i>	103
GOMPHIDAE	49, 65	Grey, Poplar	461	GRYLLOTALPIDAE	25, 87, 103
<i>Gomphocerippus rufus</i>	108	<i>Griposia aprilina</i>	462	<i>Gryllus bimaculatus</i>	100
<i>Gomphus vulgatissimus</i>	65	GROOVED WATER SCAVENGER		— <i>campestris</i>	100
<i>Gonepteryx rhamni</i>	23, 387	BEETLES	243	<i>Grypcoris stysi</i>	196
<i>Gonocerus acuteangulatus</i>	168	GROUND BEETLES	243, 262	<i>Gymnomerus laevipes</i>	520
<i>Gorytes</i>	524	Groundbug, Black	178	GYRINIDAE	242
— <i>laticinctus</i>	537	—, Black-spotted	181	<i>Gyrinus substriatus</i>	242
— <i>quadrifasciatus</i>	537	—, Bright-spotted	181		
GRACILLARIID MOTHS	407, 416	—, Bristly	182	H	
GRACILLARIIDAE	407, 416	—, Brown	178	<i>Habrophlebia fusca</i>	44
<i>Grammoptera abdominalis</i>	297	—, Coastal	175	<i>Habrosyne pyritoides</i>	428
— <i>ruficornis</i>	297	—, Curved	178	<i>Haematopota crassicornis</i>	348

<i>Haematopota pluvialis</i>	349	Hawker, Southern Migrant	60, 63	<i>Heterotoma planicornis</i>	195
Hairstreak, Black	401, 402	Hazel, Scalloped	441	HIDE BEETLES	245
—, Brown	401, 402	Heart & Club	454	<i>Himacerus</i>	191
—, Green	401, 402	Heart & Dart	454	— <i>apterus</i>	192
—, Purple	383, 401, 402	Heart-shield, Bare-footed	265	— <i>boops</i>	192
—, White-letter	23, 401, 402	—, Common	265	— <i>major</i>	192
HAIRSTREAKS	383, 401	Heath, Common	437	— <i>mirmicoides</i>	192
HAIRY FUNGUS BEETLES	250	—, Large	391, 398	<i>Hipparchia semele</i>	400
HAIRY-EYED CRANEFLIES	334	—, Latticed	437	<i>Hippobosca equina</i>	343
<i>Halesus digitatus</i>	373	—, Small	391, 398	HIPPOBOSCIDAE	343
— <i>radiatus</i>	373	HEBRIDAE	143	<i>Hippodamia tredecipunctata</i>	311
HALICTINAE	538, 556	<i>Hebrus ruficeps</i>	143	— <i>variegata</i>	311
<i>Halictus</i>	538	<i>Hedychridium</i>	481	HISTER BEETLES	245
— <i>eurygnathus</i>	538	— <i>ardens</i>	484	HISTERIDAE	245
— <i>rubicundus</i>	557	— <i>coriaceum</i>	484	HOLOMETABOLA	9
— <i>tumulorum</i>	557	— <i>cupreum</i>	484	<i>Homonotus sanguinolentus</i>	505
HALIPLIDAE	242	<i>Hedychridium roseum</i>	484	Honey bees	539, 546
<i>Haliplus confinis</i>	242	<i>Hedychrum</i>	481	Hook-tip, Barred	429
<i>Halyzia sedecimguttata</i>	312	— <i>niemelai</i>	485	—, Oak	411, 428
<i>Hamearis lucina</i>	400	— <i>nobile</i>	485	—, Pebble	428
HANDSOME FUNGUS BEETLES	250	— <i>rutilans</i>	485	—, Scarce	428
<i>Harmonia axyridis</i>	311	<i>Helophilus pendulus</i>	355	HOOK-TIPS	411, 428
<i>Harmonia quadripunctata</i>	311	HELOPHORIDAE	243	<i>Hoplia philanthus</i>	285
<i>Harpactus tumidus</i>	529	<i>Helophorus griseus</i>	243	<i>Hoplitis</i>	541
<i>Harpalus affinis</i>	273	Helophorus, Common Pool	243	— <i>adunca</i>	554
— <i>rufipes</i>	273	<i>Hemaris fuciformis</i>	433	— <i>claviventris</i>	554
Harpalus, Metallic	273	— <i>tityus</i>	433	— <i>leucomelana</i>	554
<i>Harpocera thoracica</i>	197	HEMEROBIIDAE	231, 234	<i>Hoplothrips pedicularius</i>	229
Hawk-moth, Broad-bordered		<i>Hemerobius humulinus</i>	234	Hornet	20, 511
Bee	433	— <i>micans</i>	234	—, Asian	511, 571
—, Convolvulus	431	— <i>stigma</i>	234	HORSEFLIES	332, 336, 348
—, Elephant	410, 433	<i>Hemicrepidius hirtus</i>	294	Horsefly, Band-eyed Brown	348
—, Eyed	432	HEMIPTERA	13, 24, 25, 137	—, Dark Giant	336, 348
—, Hummingbird	431	<i>Henestaris halophilus</i>	175	House-cricket	98, 101
—, Lime	432	— <i>laticeps</i>	175	—, Tropical	98, 101
—, Narrow-bordered Bee	433	<i>Henosepilachna argus</i>	311	House-moth,	
—, Pine	431	HEPIALIDAE	411, 423	White-shouldered	408, 418
—, Poplar	410, 432	<i>Hepialus humuli</i>	423	HOUSEFLIES	332, 342, 362
—, Privet	23, 431	<i>Heptagenia longicauda</i>	43	Housefly	362
—, Small Elephant	433	— <i>sulphurea</i>	43	—, Orange-legged	
HAWK-MOTHS	410, 431	HEPTAGENIIDAE	41, 43	Lesser	342
Hawk, Yellow	44	Herald	451	HOVERFLIES	19, 332, 333, 338, 353
HAWKER DRAGONFLIES	49, 60	<i>Heriades rubicola</i>	554	Hoverfly, Batman	354
Hawker, Azure	60, 63, 62	— <i>truncorum</i>	20, 554	—, Blotch-winged	357
—, Brown	60, 64	<i>Herina frondescentiae</i>	341	—, Bronze Sap	355
—, Common	49, 60, 63	HESPERIIDAE	382, 384	—, Bumblebee	358
—, Migrant	47, 60, 63	<i>Heterogaster urticae</i>	25, 176	—, Common Snout	356
—, Norfolk	60, 64	<i>Heteropelma amictum</i>	472	—, Common Twist-tailed ...	338, 353
—, Southern	60, 63, 62	HETEROPTERA	138, 142–147	—, Cossus	358

Hoverfly, Great Pied	358	<i>Idae</i> <i>aversata</i>	434	Lacebug, Apple	186
—, Grey-backed Snout	356	— <i>muricata</i>	434	—, Broom	187
—, Hornet	358	— <i>straminata</i>	434	—, Gorse	187
—, Marmalade	338, 354	<i>Ilybius</i>	255	—, Hairy	187
—, Orange-belted	357	— <i>ater</i>	261	—, Harwood's	186
—, Orange-winged	354	— <i>fuliginosus</i>	261	—, Hawthorn	186
—, Phantom	354	<i>Ilycoris cimicoides</i>	207	—, Moss	187
—, Red-belted	357	<i>Incurvaria masculella</i>	416	—, Rhododendron	186
—, Small-headed	338, 359	— <i>oehmanniella</i>	416	—, Spear Thistle	187
—, Superb Ant-hill	353	INCURVARIIDAE	407, 416	LACEBUGS	146, 186
—, Tiger	355	Insect, Horse-chestnut Scale	227	Lacehopper, Emma's	218
—, Two-banded Wasp	353	—, Woolly Currant Scale	227	—, Five-ribbed	218, 219
—, Wetland	353	<i>Ischnodemus quadratus</i>	176	—, Saltmarsh	218, 219
—, White-clubbed	354	— <i>sabuleti</i>	176	—, Spotted	218, 219
—, Yellow-barred Peat	355	<i>Ischnodes sanguinicollis</i>	290	LACEHOPPERS	210, 218
—, Yellow-tailed	332	<i>Ischnura elegans</i>	59	Lacewing, Brown Pine	234
Hunter, Snail	264	— <i>pumilio</i>	59	—, Common Brown	234
<i>Hydaticus</i>	255	<i>Isoperla grammatica</i>	78	—, Common Green	230, 233
— <i>seminiger</i>	259	— <i>obscura</i>	78	—, Confused Green	233
— <i>transversalis</i>	259	ISSID PLANTHOPPERS	210, 221	—, Dash	234
<i>Hydrometra gracilenta</i>	205	ISSIDAE	210, 221	—, Giant	231, 236
— <i>stagnorum</i>	205	<i>Issoria lathonia</i>	393	—, Hook-winged	235
HYDROMETRIDAE	142, 205	<i>Issus coleoptratus</i>	221	—, Orange-headed	233
HYDROPHILID BEETLES	243	— <i>muscaeformis</i>	221	—, Pearl	233
HYDROPHILIDAE	243	J		—, Pine	233
<i>Hydrophilus piceus</i>	243	<i>Jassidophaga</i>	337	—, Scarce Orange-headed	233
<i>Hygrobia hermanni</i>	242	JEWEL BEETLES	244	—, Spotted Brown	235
HYGROBIIDAE	242	<i>Jordania globulariae</i>	427	LACEWINGS	15, 22, 230
<i>Hylaeus communis</i>	561	<i>Jour, Merveille du</i>	462	Lackey	429
— <i>confusus</i>	561	—, Scarce Merveille du	462	—, Ground	429
— <i>pictipes</i>	541	JUMPING PLANT LICE	222, 226	Lady, Old	459
<i>Hylobius abietis</i>	323	K		Lady, Painted	383, 390, 393, 392
<i>Hymelicus acteon</i>	385	<i>Kalama tricornis</i>	187	Ladybird, 2-spot	250, 309
— <i>lineola</i>	385	<i>Kateretes pusillus</i>	249	—, 5-spot	310
— <i>sylvestris</i>	385	KATERETIDAE	249	—, 7-spot	21, 310
HYMENOPTERA	16, 20, 22, 464	KEELED SHIELDBUGS	144, 145, 149	—, 10-spot	309
<i>Hypena proboscidalis</i>	451	KEROPLATIDAE	335	—, 13-spot	311
<i>Hyphydrus</i>	255	Kitten, Sallow	446	—, 14-spot	312
— <i>ovatus</i>	256	<i>Kleidocerys ericae</i>	180	—, 16-spot	313
I		— <i>resedae</i>	180	—, 18-spot	312
<i>Iassus scutellarius</i>	216	Knot, True Lover's	455	—, 22-spot	312
<i>Ichneumon albiger</i>	473	<i>Korscheltellus lupulina</i>	423	—, 24-spot	311
— <i>confusor</i>	473	L		—, Adonis	311
— <i>deliratorius</i>	472	<i>Labia minor</i>	81	—, Ant-nest	313
— <i>sarcitorius</i>	473	<i>Labidura riparia</i>	81	—, Bryony	311
— <i>stramentor</i>	472	Lacebug, Andromeda	186	—, Cream-spot	312
— <i>xanthorius</i>	473			—, Cream-streaked	311
ICHNEUMONIDAE	472			—, Eyed	310
				—, False	250

Ladybird, Harlequin	309, 311	Leaf-cutter, Feathered	407, 416	LEPTOCERIDAE	370, 375
—, Heather	313	Leaf-miner, Horse-chestnut ..	407, 416	<i>Leptoglossus occidentalis</i>	166
—, Hieroglyphic	310	LEAF-ROLLING WEEVILS	254	<i>Leptophlebia marginata</i>	44
—, Kidney-spot	309, 313	Leafhopper, 10-spot	216	— <i>vespertina</i>	44
—, Larch	314	—, Banded	218	LEPTOPHLEBIIDAE	41, 44
—, Orange	312	—, Chalkhill	217	<i>Leptophyes punctatissima</i>	92
—, Pine	313	—, Common	218	LEPTOPODOMORPHA	144, 204
—, Red Marsh	314	—, Eared	216	<i>Leptopterna dolabrata</i>	194
—, Scarce 7-spot	310	—, Elm	216	— <i>ferrugata</i>	194
—, Spotted Marsh	314	—, Eyed	214	<i>Leptura aurulenta</i>	301
—, Striped	312	—, Green	210, 215	— <i>quadrifasciata</i>	301
—, Water	313	—, Hazel	214	LESSER HOUSEFLIES	342
LADYBIRDS	250, 309	—, Heather	217	Lesser mason bees	540, 554
<i>Lampides boeticus</i>	406	—, Large-headed	215	LESSER WATER BOATMEN	142, 208
LAMPYRIDAE	247	—, Lime	217	<i>Lestes barbarus</i>	53
<i>Lampyrus noctiluca</i>	21, 247	—, Maple	214	— <i>dryas</i>	52
LANCE-FLIES	341	—, Mottled	214	— <i>sponsa</i>	52
<i>Laothoe populi</i>	432	—, Oak	216	LESTIDAE	48, 51
<i>Laphria flava</i>	361	—, Orange-spotted	217	<i>Lestiphorus bicinctus</i>	537
Lappet	23, 430	—, Rhododendron	216	<i>Leucodonta bicoloria</i>	445
LAPPET MOTHS	411, 429	—, Tamarisk	217	<i>Leucorrhina</i>	68
Large carpenter bees	539, 551	—, White-banded	215	— <i>dubia</i>	72
<i>Lasiocampa quercus</i>	430	—, Yellow-and-black	215	— <i>pectoralis</i>	68
— <i>trifolii</i>	430	LEAFHOPPERS	210, 214	<i>Leucozona lucorum</i>	357
LASIOCAMPIDAE	23, 411, 429	Leatherbug, Breckland	169	<i>Leuctra geniculata</i>	76
<i>Lasioglossum</i>	538	—, Cryptic	166, 168	LEUCTRIDAE	24, 75, 76
— <i>albipes</i>	557	—, Dalman's	166, 169	<i>Libellula</i>	68
— <i>calceatum</i>	557	—, Denticulate	166, 168	— <i>depressa</i>	24, 73
— <i>morio</i>	557	—, Fallén's	169	— <i>fulva</i>	73
— <i>smeathmanellum</i>	538	—, Rhombic	166, 167	— <i>quadrinaculata</i>	73
— <i>xanthopus</i>	557	—, Slender-horned	166, 168	LIBELLULIDAE	24, 49, 68
<i>Lasiommata megera</i>	400	LEATHERBUGS	147, 165	LICE	11, 15, 132
<i>Lasius</i>	491	<i>Lebia chlorocephala</i>	274	<i>Liliocercis lilii</i>	317
— <i>alienus</i>	493	Lebia, Green-headed	274	LIMACODIDAE	411, 422
— <i>emarginatus</i>	492	<i>Ledra aurita</i>	216	<i>Limenitis camilla</i>	391
— <i>flavus</i>	20, 492	<i>Legnotus</i>	151	LIMNEPHILIDAE	22, 370, 371
— <i>fuliginosus</i>	493	— <i>limbosus</i>	153	LIMNEPHILIDS	370, 371
— <i>niger</i>	20, 493	— <i>picipes</i>	153	<i>Limnephilus lunatus</i>	372
— <i>platythorax</i>	493	LEIODID BEETLES	245	— <i>marmoratus</i>	372
— <i>psammophilus</i>	493	Leiodid, Orange-patched	245	— <i>rhombicus</i>	372
— <i>lanio</i>	216	LEIODIDAE	245	— <i>sparsus</i>	372
LATRIDIIDAE	250	<i>Leiopus linnei</i>	303	LIMONIIDAE	334
Lauxaniid, Orange	339	— <i>nebulosus</i>	303	<i>Limoniscus violaceus</i>	291
LAUXANIIDAE	339	LEOPARD MOTHS	23, 411, 422	<i>Limonius poneli</i>	294
LAUXANIIDS	339	LEPIDOPTERA	18, 23, 380	<i>Lindenius</i>	524
LEAF BEETLES	253, 315	<i>Lepisma saccharina</i>	39	— <i>albilabris</i>	531
Leaf-cutter bees	540, 555	LEPISMATIDAE	39	— <i>panzeri</i>	531
LEAF-CUTTER MOTHS	407, 416	<i>Leptidea juvernica</i>	388	<i>Linnavuoriana decempunctata</i> ..	216
Leaf-cutter, Common	416	— <i>sinapis</i>	388	<i>Liocoris tripustulatus</i>	197

<i>Liophloeus tessulatus</i>	325	LYMEXYLIDAE	247	<i>Megachile centuncularis</i>	555
<i>Liopterus haemorrhoidalis</i>	261	<i>Lytta vesicatoria</i>	288	— <i>maritima</i>	555
<i>Listrodromus nyctemerus</i>	475	M		MEGACHILINAE	540, 552
<i>Lixus scabricollis</i>	324			<i>Megacoelum beckeri</i>	203
<i>Lochmaea suturalis</i>	321	MACHILIDAE	35	— <i>infusum</i>	203
Locust, Desert	104	MACHILIDS	35	<i>Megalonotus dilatatus</i>	178
—, Migratory	104	<i>Macrodema micropterum</i>	179	— <i>praetextatus</i>	178
<i>Locusta migratoria</i>	104	<i>Macroglossum stellatarum</i>	431	— <i>sabulicola</i>	178
<i>Loensia fasciata</i>	136	<i>Macropis europaea</i>	542	MEGALOPODID LEAF BEETLES ...	253
<i>Lonchaea</i>	341	<i>Macrosiphioniella tanacetaria</i>	224	MEGALOPODIDAE	253
LONCHAEIDAE	341	<i>Macrosiphum rosae</i>	225	MEGALOPTERA	14, 237
LONCHODIDAE	119, 123	<i>Macrothylacia rubi</i>	430	<i>Megamerina dolium</i>	339
LONCHODIDS	119, 123	<i>Maculinea arion</i>	406	MEGAMERINIDAE	339
LONG-HORN MOTHS	407, 415	Magpie	436	MEGAMERINIDS	339
Long-horn, Early	415	—, Small	420	<i>Megapenthes lugens</i>	295
—, Green	407, 415	Major, Four-barred	336	<i>Megatoma undata</i>	247
—, Yellow-barred	415	Malachite, Common	248	Megatoma, Two-banded	247
Long-horned bees	539, 550	<i>Malachius bipustulatus</i>	248	<i>Meiosimyza rorida</i>	339
LONG-HORNED CADDIS	370, 375	<i>Malacocoris chlorizans</i>	200	<i>Melanargia galathea</i>	397
LONG-LEGGED FLIES	337	<i>Malacosoma castrensis</i>	429	<i>Melandrya caraboides</i>	251
LONG-PALPED CRANEFLIES . 19, 332,	333, 334, 343	— <i>neustria</i>	429	MELANDRYIDAE	251
LONG-TOED WATER BEETLES	246	MAMMAL FLEAS	379	<i>Melanotus castanipes</i>	295
LONG-WINGED FLIES	340	<i>Maniola jurtina</i>	399	— <i>villosus</i>	295
LONGHORN BEETLES	253, 296	MANTIDAE	116	Melanotus, Common	290, 295
<i>Lordithon</i>	275	MANTIDS	12, 116	—, Confused	290, 295
— <i>lumulatus</i>	276	<i>Mantis religiosa</i>	116	<i>Melecta albifrons</i>	551
Louse, Body	133	Mantis, Conehead	116	<i>Melitaea athalia</i>	396
—, Head	133	—, Praying	116	— <i>cinxia</i>	396
LOWER DIPTERA 333, 334–335, 343		—, White-spotted	116	<i>Melitta</i>	538
<i>Loxocera aristata</i>	340	MANTODEA	12, 116	— <i>haemorrhoidalis</i>	542
LUCANIDAE	244, 280	MANY-PLUME MOTHS	408	— <i>leporina</i>	538
<i>Lucanus cervus</i>	281	<i>Marava arachidis</i>	81	Melitta, Clover	538
<i>Lucilia caesar</i>	363	Marble, Arched	419	—, Gold-tailed	542
Lutestring, Common	429	<i>Margarinotus merdarius</i>	245	MELITTINAE	538, 542
LUTESTRINGS	411, 428	MARSH BEETLES	244	<i>Mellinus</i>	524
<i>Lycaena dispar</i>	406	Mason bees	540, 552	— <i>arvensis</i>	531
— <i>phlaeas</i>	403	MASON WASPS	489, 508	— <i>crabroneus</i>	531
LYCAENIDAE	23, 383, 401	MAYFLIES	14, 24, 40	<i>Meloe brevicollis</i>	289
<i>Lycia hirtaria</i>	440	Mayfly, Drake Mackerel	45	— <i>mediterraneus</i>	289
LYCIDAE	246	—, Green Drake	24, 45	— <i>proscarabaeus</i>	289
<i>Lycophotia porphyria</i>	455	—, Striped	45	— <i>rugosus</i>	289
<i>Lyctus brunneus</i>	247	—, Yellow	43	— <i>violaceus</i>	289
LYGAEIDAE	25, 147, 175	MEALYBUGS	222, 227	MELOIDAE	252, 288
<i>Lygocoris pabulinus</i>	199	Measurer, Lesser Water	205	<i>Melolontha hippocastani</i>	284
— <i>rugicollis</i>	199	—, Water	142, 205	— <i>melolontha</i>	21, 284
<i>Lygus maritimus</i>	201	<i>Mecidea lindbergi</i>	156	MELYRIDAE	248
— <i>rugulipennis</i>	201	<i>Meconema meridionale</i>	93	MEMBRACIDAE	210, 211
<i>Lymantria monacha</i>	451	— <i>thalassinum</i>	93	<i>Menophra abruptaria</i>	435
		MECOPTERA	14, 365	<i>Merodon equestris</i>	358

Merveille du Jour	462	<i>Moma alpium</i>	462	<i>Mycetophagus quadripustulatus</i> ..	250
—, Scarce	462	<i>Monalocoris filicis</i>	201	<i>Myrmeleon formicarius</i>	232
<i>Mesembrina meridiana</i>	362	Monarch	390, 393	MYRMELEONTIDAE	22, 231, 232
— <i>mystacea</i>	362	<i>Monosapyga clavicornis</i>	501	<i>Myrmeleotettix maculatus</i>	108
MESOPSOCIDAE	134	MONOTOMIDAE	249	Myrmica	491
<i>Mesopsocus immunis</i>	134	MORDELLIDAE	251	— <i>rubra</i>	498
<i>Mesosa nebulosa</i>	304	<i>Mormo maura</i>	459	— <i>ruginodis</i>	498
<i>Mesovelia furcata</i>	142	Mosquito, Common House	335	— <i>sabuleti</i>	499
MESOVELIIDAE	142	MOSQUITOES	335	— <i>scabrinodis</i>	499
METALMARKS		MOTH FLIES	334	MYRMICINAE	490–491
[BUTTERFLIES]	382, 400	Moth, Alder	460	<i>Myrmosa atra</i>	501
METALMARKS [MOTHS]	408, 416	—, Antler	455	<i>Myrmus miriformis</i>	172
<i>Metatropis rufescens</i>	184	—, Bee	409, 414	<i>Myrrha octodecimguttata</i>	312
<i>Methocha articulata</i>	502	—, Brimstone	437	<i>Mystacides azurea</i>	375
<i>Metoecus paradoxus</i>	251	—, Broom	455	— <i>longicornis</i>	375
<i>Metopius dentatus</i>	475	—, Common Clothes	409	— <i>nigra</i>	375
<i>Metrioptera brachyptera</i>	25, 96	—, Cork	418	<i>Mythimna pallens</i>	413
<i>Metylophorus nebulosus</i>	136	—, December	429	<i>Myzia oblongoguttata</i>	312
<i>Microchrysa polita</i>	332	—, Diamond-back	408, 415		
<i>Microdon analis</i>	331	—, Emperor	8, 410, 427	N	
Microdon, Heath	331	—, Four-spotted Clothes	407, 418	NABIDAE	147, 191
<i>Microdynerus exilis</i>	520	—, Fox	430	<i>Nabis</i>	191
<i>Micromus variegatus</i>	235	—, Ghost	423	— <i>ericetorum</i>	193
MICROPEZIDAE	339	—, Goat	23, 276, 411, 422	— <i>flavomarginatus</i>	193
MICROPTERIGIDAE	407	—, Hornet	424	— <i>limbatus</i>	193
<i>Micropterix aureatella</i>	407	—, Leopard	422	— <i>rugosus</i>	193
<i>Microrhagus pygmaeus</i>	246	—, Light Brown Apple	419	<i>Nalassus laevioctostriatus</i>	252
Midge, Highland	335	—, Lobster	443	<i>Nanophyes marmoratus</i>	254
—, Pale	335	—, Lunar Hornet	424	NANOPHYID WEEVILS	254
<i>Miltochrista miniata</i>	452	—, Meal	414	NANOPHYIDAE	254
<i>Mimas tiliiae</i>	432	—, Muslin	450	NARROW-WAISTED BARK	
<i>Mimesa</i>	525	—, Northern Winter	439	BEETLES	252
— <i>equestris</i>	529	—, Peppered	440	NAUCORIDAE	143, 207
<i>Mimesa</i> , Common	529	—, Puss	411, 443	<i>Nebria brevicollis</i>	265
<i>Mimumesa</i>	524	—, Swallow-tailed	435	<i>Nebria salina</i>	265
— <i>dahlbomi</i>	526	—, Twenty-plume	408	NECKED WOODWASPS	470
Mini-miner, Common	562, 567	—, Winter	439	NEEDLE FLIES	24, 75, 76
Mining bees	541, 562	Mother of Pearl	420	<i>Neides tipularius</i>	184
MIRIDAE	144, 146, 194	MOTHS	18, 23, 380, 407	<i>Nemapogon cloacella</i>	418
<i>Miris striatus</i>	200	MOULD BEETLES	250	NEMATOCERA ...	333, 334–335, 343
Mocha, Birch	435	Mourning bees	539, 551	<i>Nemobius sylvestris</i>	99
—, Dingy	435	Mud bees	540, 555	<i>Nemophora degeerella</i>	415
—, False	435	Mullein	457	<i>Nemotelus uliginosus</i>	352
MOGOPLISTIDAE	87, 102	<i>Musca domestica</i>	362	<i>Nemoura cinerea</i>	76
<i>Mogulones geographicus</i>	324	MUSCIDAE	332, 342, 362	NEMOURIDAE	75, 76
Mole-cricket	25, 87, 103	<i>Mutilla europaea</i>	500	<i>Neophilaenus</i>	212
—, Fifteen-chromosome	103	MUTILLIDAE	489, 500	— <i>lineatus</i>	213
MOLE-CRICKETS	87, 103	<i>Myathropa florea</i>	354	NEOPTERA	9
<i>Molorchus minor</i>	306	MYCETOPHAGIDAE	250	<i>Neottiglossa pusilla</i>	164

<i>Nepa cinerea</i>	207	<i>Notodonta dromedarius</i>	444	OESTRIDAE	342
<i>Nephrotoma</i>	343	— <i>ziczac</i>	444	OIL BEETLES	252, 288
— <i>quadrifaria</i>	346	NOTODONTIDAE	411, 444	Oil-collecting bees	538, 542
NEPIDAE	142, 207	<i>Notonecta glauca</i>	24, 209	<i>Olethreutes arcuella</i>	419
NET-WINGED BEETLES	246	— <i>maculata</i>	209	<i>Olibrus aeneus</i>	249
<i>Netelia melanura</i>	475	— <i>viridis</i>	209	OLIGOTOMIDAE	115
Nettle-tap, Common	408, 416	NOTONECTIDAE	143, 208	Olive, Blue-winged	44
NEUROPTERA	15, 22, 230	<i>Notostira elongata</i>	199	—, Lake	43
<i>Neuroterus numismalis</i>	477	<i>Notoxys monoceros</i>	252	—, Large Dark	42
— <i>quercusbaccarum</i>	477	NYMPHALIDAE	23, 383, 390	—, Pond	43
<i>Nezara viridula</i>	163	NYMPHALIDS	383, 390	<i>Omaloplia ruricola</i>	282
Nightrunner, Yellow-bordered	271	<i>Nymphalis antiopa</i>	393	<i>Omalus</i>	481
<i>Nigrotipula</i>	343	— <i>polychloros</i>	393	— <i>aeneus</i>	483
<i>Nimbus contaminatus</i>	285	— <i>xanthomelas</i>	393	— <i>puncticollis</i>	483
— <i>obliteratus</i>	285	<i>Nysius ericae</i>	181	<i>Omocestus rufipes</i>	111
NITIDULIDAE	250	— <i>thymi</i>	181	— <i>viridulus</i>	111
<i>Noctua fimbriata</i>	458	Nysson	525	<i>Omophron limbatum</i>	262
— <i>pronuba</i>	458	— <i>dimidiatus</i>	536	<i>Omphaloscelis lunosa</i>	461
NOCTUIDAE	413, 454	— <i>interruptus</i>	536	<i>Oncotylus viridiflavus</i>	199
NOCTUIDS	413, 454	— <i>spinus</i>	536	<i>Ontholestes</i>	275
<i>Nola confusalis</i>	463	— <i>trimaculatus</i>	536	— <i>murinus</i>	278
NOLIDAE	412, 463			— <i>tessellatus</i>	278
Nomad bees	539, 543	O		<i>Onthophagus coenobita</i>	287
<i>Nomada argentata</i>	567	Oak, Dusky Scalloped	441	— <i>joannae</i>	287
— <i>armata</i>	566	—, Scalloped	441	— <i>similis</i>	287
— <i>fabriciana</i>	543	<i>Obrium brunneum</i>	306	<i>Operophtera brumata</i>	439
— <i>flava</i>	545	— <i>cantharinum</i>	306	— <i>fagata</i>	439
— <i>flavoguttata</i>	545	<i>Ochropacha duplaris</i>	429	<i>Ophion obscuratus</i>	474
— <i>fucata</i>	544	<i>Ochthera mantis</i>	338	— <i>scutellaris</i>	475
— <i>goodeniana</i>	544	<i>Ocybus</i>	275	<i>Opisthograptis luteolata</i>	437
— <i>guttulata</i>	566	— <i>nitens</i>	244	<i>Oplodontha viridula</i>	352
— <i>lathburiana</i>	568	— <i>olens</i>	279	Opomyzid, Three-spotted	340
— <i>leucophthalma</i>	565	<i>Odezia atrata</i>	436	OPOMYZIDAE	340
— <i>marshamella</i>	544	ODONATA	15, 24, 46	OPOMYZID FLIES	340
— <i>obtusifrons</i>	566	ODONTOCERIDAE	370, 376	<i>Opsius stactogalus</i>	217
— <i>panzeri</i>	545	<i>Odontocerum albicorne</i>	376	Orange-tip	387, 388
— <i>roberjeotiana</i>	543	<i>Odontopera bidentata</i>	441	<i>Orgyia antiqua</i>	447
— <i>rufipes</i>	544	<i>Odontoscelis fuliginosa</i>	154	<i>Orgyia recens</i>	447
— <i>sexfasciata</i>	539, 550	— <i>lineola</i>	154	ORMYRID WASPS	476
— <i>signata</i>	564	<i>Odontothrips cytisi</i>	229	ORMYRIDAE	476
— <i>striata</i>	567	— <i>ulicis</i>	229	<i>Ormyrus nitidulus</i>	476
NON-BITING MIDGES	335	<i>Odynerus</i>	509	<i>Orsodacne cerasi</i>	253
Nonpareil, Clifden	453	— <i>melanocephalus</i>	519	Orsodacne, Variable	253
NOTERIDAE	242	<i>Odynerus simillimus</i>	519	ORSODACNID LEAF BEETLES	253
<i>Noterus clavicornis</i>	242	— <i>spinipes</i>	519	ORSODACNIDAE	253
<i>Noterus</i> , Larger	242	<i>Oecanthus pellucens</i>	99	<i>Orthetrum</i>	68
<i>Nothochrysa capitata</i>	233	OECOPHORIDAE	408, 418	— <i>cancellatum</i>	72
— <i>fulviceps</i>	233	<i>Oedemera nobilis</i>	252	— <i>coerulescens</i>	72
<i>Notiophilus biguttatus</i>	265	OEDEMERIDAE	252	<i>Orthocephalus coriaceus</i>	203

<i>Orthocephalus saltator</i>	203	<i>Panorpa cognata</i>	367	PERLIDAE	75, 79
<i>Orthops kalmi</i>	198	— <i>communis</i>	367	<i>Perlodes mortoni</i>	78
ORTHOPTERA	12, 25, 84	— <i>germanica</i>	367	PERLODID STONEFLIES	75, 78
<i>Orthosia gothica</i>	454	PANORPIDAE	366	PERLODIDAE	75, 78
<i>Orthotylus rubidus</i>	203	<i>Pantala flavescens</i>	68	<i>Petrobius</i>	35
<i>Osmia aurulenta</i>	553	Pantaloons bees	538, 542	— <i>brevistylis</i>	37
— <i>bicolor</i>	552	<i>Pantilius tunicatus</i>	199	— <i>maritimus</i>	37
— <i>bicornis</i>	553	<i>Panurgus banksianus</i>	569	<i>Petrophora chlorosata</i>	441
— <i>caerulescens</i>	553	— <i>calcaratus</i>	569	<i>Phaeostigma notata</i>	329
— <i>leaiana</i>	541	Paper wasps	509, 515	PHALACRIDAE	249
OSMYLIDAE	231, 236	<i>Papilio machaon</i>	23, 383	<i>Phalera bucephala</i>	446
<i>Osmylus fulvicephalus</i>	236	PAPILIONIDAE	23, 382, 383	<i>Phaneroptera falcata</i>	94
<i>Otiorhynchus armadillo</i>	324	<i>Paracorymbia fulva</i>	297	— <i>nana</i>	94
— <i>atroapterus</i>	324	<i>Parage aegeria</i>	397	<i>Phania funesta</i>	332
— <i>sulcatus</i>	324	PARANEOPTERA	9	<i>Phasia hemiptera</i>	364
— <i>tenebricosus</i>	324	<i>Parapiesma quadratum</i>	183	PHASMATIDAE	25, 119, 120
<i>Oulema melanopus</i>	317	<i>Parasemia plantaginis</i>	449	PHASMATIDS	119, 120
<i>Ourapteryx sambucaria</i>	435	PARASITIC FLIES	332, 342, 364	PHASMIDA	12, 25, 117
OVAL SHIELDBUGS	145	PARASITIC WASPS	466, 471–478	<i>Pheosia gnoma</i>	444
OWLET MOTHS	408	PARASITICA	466, 471–478	— <i>tremula</i>	444
Owlet, Ling	408	<i>Passaloecus</i>	524	<i>Phigalia pilosaria</i>	440
<i>Oxybelus</i>	525	— <i>corniger</i>	525	<i>Philaenus spumarius</i>	25, 213
— <i>argentatus</i>	530	Pea, Cream-bordered Green	419	<i>Philanthus triangulum</i>	537
— <i>mandibularis</i>	530	Peacock	383, 390, 393, 392	<i>Philedone gerningana</i>	419
— <i>unigulum</i>	530	Peacock, Copper	265	<i>Philonicus albiceps</i>	360
<i>Oxycera rara</i>	336	—, Green-socks	265	<i>Philonthus</i>	275
P		Pearl, Mother of	420	— <i>decorus</i>	278
<i>Pachybrachius fracticollis</i>	177	<i>Pediacus dermestoides</i>	249	Philonthus, Beautiful	278
— <i>luridus</i>	177	<i>Pedicia rivosa</i>	334	PHILOPOTAMIDAE	370, 371
<i>Pachythelia villosella</i>	409	PEDICIDAE	334	<i>Philopotamus montanus</i>	371
<i>Pachytodes cerambyciformis</i>	296	PEDICULIDAE	133	PHLAEOTHIRIPIDAE	229
<i>Paederus</i>	275	<i>Pediculus humanus</i>	133	<i>Phlogophora meticulosa</i>	457
— <i>caligatus</i>	279	<i>Pediopsis tiliae</i>	217	<i>Pholidoptera griseaptera</i>	97
— <i>fuscipes</i>	279	<i>Pemphredon</i>	524	<i>Phortica variegata</i>	339
— <i>littoralis</i>	279	— <i>lugubris</i>	526	<i>Phosphuga atrata</i>	245
— <i>riparius</i>	279	<i>Pentastiridius leporinus</i>	219	<i>Phragmatobia fuliginosa</i>	449
<i>Paederus</i> , Coastal	279	<i>Pentatoma rufipes</i>	160	<i>Phryganea bipunctata</i>	371
—, Dusky	279	PENTATOMIDAE	25, 145, 156	— <i>grandis</i>	371
—, Rare	279	PENTATOMORPHA	144, 148	PHRYGANEIDAE	370, 371
—, Wetland	279	<i>Perapion violaceum</i>	254	PHTHIRAPTERA	133
PALAEOPTERA	9	<i>Peribalus strictus</i>	160	<i>Phyllobius pomaceus</i>	325
<i>Palloptera umbellatarum</i>	340	<i>Pericoma</i>	334	— <i>pyri</i>	325
PALLOPTERIDAE	340	<i>Perideia anceps</i>	445	<i>Phyllobrotica quadrimaculata</i>	321
<i>Palomena prasina</i>	25, 162	<i>Periplaneta</i>	127	<i>Phyllopertha horticola</i>	285
<i>Panagaeus bipustulatus</i>	271	— <i>americana</i>	128	<i>Phyllostreta undulata</i>	316
— <i>cruxmajor</i>	271	— <i>australasiae</i>	128	<i>Phymatocera aterrima</i>	468
<i>Panemeria tenebrata</i>	458	— <i>brunnea</i>	128	<i>Phymatodes testaceus</i>	302
<i>Panolis flammea</i>	457	<i>Perithous scurra</i>	475	<i>Phymatopus hecta</i>	423
		<i>Perla bipunctata</i>	79	<i>Physatocheila dumetorum</i>	186

INDEX

<i>Physatocheila harwoodi</i>	186	<i>Platynus assimilis</i>	272	Pondskater, Lake	206
— <i>smreczynskii</i>	186	PLATYPEZIDAE	337	—, River	206
<i>Phytocoris tiliae</i>	198	<i>Platypus cylindrus</i>	326	PONDSKATERS	142, 206
— <i>varipes</i>	198	<i>Platystoma seminationis</i>	341	PONDWEED BUGS	142
<i>Phytoecia cylindrica</i>	308	PLATYSTOMATIDAE	341	<i>Pontia daplidice</i>	387
<i>Picromerus bidens</i>	163	<i>Platystomos albinus</i>	254	POTAMANTHIDAE	41
PICTURE-WINGED FLIES	340	<i>Platyura marginata</i>	335	<i>Potamanthus luteus</i>	43
PIERIDAE	23, 382, 387	<i>Plea minutissima</i>	143	POTTER WASPS	489, 509
<i>Pieris brassicae</i>	389	PLEASING FUNGUS BEETLES	248	PRIMATE LICE	133
— <i>napi</i>	389	<i>Plebejus argus</i>	405	<i>Priocnemis</i>	503
— <i>rapae</i>	389	PLECOPTERA	14, 24, 74	— <i>perturbator</i>	504
<i>Piesma maculatum</i>	183	PLEIDAE	143	<i>Prionocera</i>	343
PIESMATIDAE	146, 183	<i>Pleuroptya ruralis</i>	420	<i>Prionus coriarius</i>	305
<i>Piezodorus lituratus</i>	162	<i>Plinththis brevipennis</i>	183	Processionary, Oak	443, 571
PILL BEETLES	245	PLUME MOTHS	408, 421	—, Pine	443
<i>Pilophorus cinnamopterus</i>	202	Plume, Common	421	<i>Procloeon</i>	42
<i>Pimpla rufipes</i>	474	—, White	408, 421	— <i>bifidum</i>	42
— <i>turionellae</i>	474	<i>Plusia festucae</i>	456	— <i>pennulatum</i>	42
Pincushion, Robin's	477	— <i>putnami</i>	456	Prominent, Coxcomb	445
<i>Pionosomus varius</i>	182	<i>Plutella xylostella</i>	415	—, Great	445
PIPUNCULIDAE	337	PLUTELLIDAE	408, 415	—, Iron	444
<i>Pithanus maerkelii</i>	201	<i>Pocota personata</i>	359	—, Lesser Swallow	444
PLANT BUGS	144, 146, 194	<i>Podalonia affinis</i>	522	—, Pale	445
Planthopper, Bracken	138, 210, 220	— <i>hirsuta</i>	522	—, Pebble	444
—, Broadened	220	<i>Podops inuncta</i>	164	—, Swallow	444
—, Chalk	210, 222	<i>Poecilium alni</i>	303	—, White	445
—, Rey's	220	<i>Poecilobothrus nobilitatus</i>	337	PROMINENTS	411, 444
—, Sedge	220	<i>Poecilocampa populi</i>	429	<i>Propylea</i>	
—, Yellowish	220	<i>Poecilus cupreus</i>	267	<i>quattuordecimpunctata</i>	312
PLANTHOPPERS	210, 220	— <i>kugelanni</i>	267	<i>Prosternon tessellatum</i>	295
<i>Planuncus tingitanus</i>	129	— <i>lepidus</i>	267	<i>Protoetia cuprea</i>	282
Plasterer bees	541, 558	— <i>versicolor</i>	267	<i>Protichneumon pisorius</i>	474
PLATASPIDAE	145	<i>Pogonocherus hispidulus</i>	304	<i>Protocalliphora azurea</i>	363
<i>Plateumaris discolor</i>	322	— <i>hispidus</i>	304	<i>Pseudepipona herrichii</i>	520
— <i>sericea</i>	322	<i>Polistes</i>	508	<i>Pseudochorthippus parallelus</i>	109
<i>Platycheirus rosarum</i>	353	— <i>dominula</i>	515	PSEUDOCOCCIDAE	222, 227
<i>Platycis minutus</i>	246	— <i>gallica</i>	515	<i>Pseudoids prasinana</i>	463
<i>Platycleis albopunctata</i>	97	— <i>nimpha</i>	515	<i>Pseudomalus</i>	481
PLATYCNEMIDAE	48, 53	<i>Polygona c-album</i>	393	— <i>auratus</i>	483
<i>Platycnemis pennipes</i>	53	POLYNEOPTERA	9	— <i>violaceus</i>	483
<i>Platycranus bicolor</i>	203	<i>Polyommatus bellargus</i>	404	<i>Pseudomogoplistes vicentae</i>	102
<i>Platydracus</i>	275	— <i>coridon</i>	404	<i>Pseudopanthera macularia</i>	437
— <i>fulvipes</i>	277	— <i>icarus</i>	404	<i>Pseudospinolia neglecta</i>	482
— <i>stercorarius</i>	277	POLYPHAGA	243–254, 274	<i>Pseudovadonia livida</i>	298
<i>Platydracus</i> , Blue-green	277	POLYPORE FUNGUS BEETLES	251	PSILIDAE	340
—, Dung	277	POMPIDIDAE	489, 503	PSOCIDAE	134, 136
PLATYGASTRID WASPS	478	POMPILOIDEA	479, 489	<i>Psococerastis gibbosa</i>	136
PLATYGASTRIDAE	478	<i>Pompilus cinereus</i>	507	PSOCODEA	11, 15, 132
<i>Platynaspis luteorubra</i>	313	Pondskater, Common	142, 206	PSOCOPTERA	134

PSYCHIDAE	409	R	<i>Rhopalum</i>	525	
PSYCHODIDAE	334	<i>Raglius alboacuminatus</i>	175	— <i>clavipes</i>	528
Psyllid, Ash	226	<i>Rainieria calceata</i>	339	— <i>coarctatum</i>	528
PSYLLIDAE	222, 226	<i>Ramulus</i>	119	<i>Rhopalus maculatus</i>	171
<i>Psyllobora vigintiduopunctata</i>	312	— <i>thaii</i>	123	— <i>parumpunctatus</i>	171
<i>Psyllopsis fraxini</i>	226	<i>Ranatra linearis</i>	207	— <i>rufus</i>	171
PTEROPHORIDAE	408, 421	RAPHIDIIDAE	22, 328	— <i>subrufus</i>	171
<i>Pterophorus pentadactyla</i>	421	RAPHIDOPTERA	14, 22, 327	RHYNCHITIDAE	254
<i>Pterostichus madidus</i>	266	RED DAMSELFLIES	48, 54	<i>Rhyparochromus pini</i>	181
— <i>nigrita</i>	266	Red, Common February	77	— <i>vulgaris</i>	181
<i>Pterostoma palpina</i>	445	—, Northern February	77	<i>Rhyssa persuasoria</i>	476
<i>Pterotmetus staphyliniformis</i>	183	REDUVIDAE	144, 147, 188	<i>Rhyzobius chrysomeloides</i>	314
PTERYGOTA	9	<i>Reduvius personatus</i>	188	— <i>litura</i>	314
<i>Ptilinus pectinicornis</i>	247	<i>Reptalus quinquecostatus</i>	219	— <i>lophanthae</i>	314
<i>Ptilodon capucina</i>	445	Resin bees	540, 554	Rhyzobius, Pointed-keeled	314
PTINIDAE	247	<i>Reticulitermes grassei</i>	127	—, Red-headed	314
<i>Ptychoptera albimana</i>	347	<i>Rhabdomiris striatellus</i>	200	—, Round-keeled	314
— <i>contaminata</i>	347	<i>Rhacognathus punctatus</i>	161	Ringlet	391, 399
PTYCHOPTERIDAE	332, 334, 347	<i>Rhagio scolopaceus</i>	336	—, Mountain	391, 398
Pug, Lime-speck	438	RHAGIONIDAE	336	RIODINIDAE	382, 400
—, Narrow-winged	412, 438	<i>Rhagium bifasciatum</i>	300	RIPIPHORID BEETLES	251
<i>Pulex irritans</i>	379	<i>Rhagium inquisitor</i>	300	RIPIPHORIDAE	251
PULICIDAE	379	— <i>mordax</i>	300	RIVER BUGS	142
<i>Pulvinaria regulis</i>	227	<i>Rhagonycha fulva</i>	247	<i>Rivula sericealis</i>	451
— <i>vitis</i>	227	<i>Rhantus</i>	255	ROBBERFLIES	332, 337, 360
<i>Pycnoscelus surinamensis</i>	131	— <i>suturalis</i>	258	Robberfly, Brown Heath	360
PYGMY BACKSWIMMERS	143	RHAPHIDOPHORIDAE	87, 102	—, Bumblebee	361
PYRALID MOTHS	409, 414	<i>Rhaphigaster nebulosa</i>	160	—, Common Red-legged	361
PYRALIDAE	409, 414	<i>Rheumaptera hastata</i>	436	—, Dune	336, 360
<i>Pyrallis farinalis</i>	414	<i>Rhingia campestris</i>	356	—, Fan-bristled	360
— <i>lienigialis</i>	414	— <i>rostrata</i>	356	—, Hornet	361
<i>Pyrausta aurata</i>	421	<i>Rhinocyllus conicus</i>	325	—, Irish	360
— <i>ostrinalis</i>	421	RHINOTERMITIDAE	126, 127	—, Kite-tailed	360
— <i>purpuralis</i>	421	<i>Rhizophagus dispar</i>	249	<i>Roeseliana roeselii</i>	96
<i>Pyrgus malvae</i>	386	<i>Rhizophagus, Red-and-blue</i>	249	ROOT-EATING BEETLES	249
<i>Pyrochroa coccinea</i>	252	<i>Rhogogaster viridis</i>	468	ROVE BEETLES	244, 272
PYROCHROIDAE	252	Rhogogaster, Common	468	<i>Ruspolia nitidula</i>	94
<i>Pyronia tithonus</i>	399	RHOPALID BUGS	144, 147, 170	RUST FLIES	340
<i>Pyropteron muscaeformis</i>	424	Rhopalid, Banded	170	Rustic, Black	461
<i>Pyrrhalta viburni</i>	321	—, Hypericum	171	<i>Rutpela maculata</i>	301
<i>Pyrrhidium sanguineum</i>	303	—, Knapweed	170	S	
PYRRHOCORIDAE	144, 148, 175	—, Marsh	171	Sable, Argent &	436
<i>Pyrrhocoris apterus</i>	173	—, Red	171	—, Small Argent &	436
<i>Pyrrhosoma nymphula</i>	24, 55	—, Red & Black	170, 172	<i>Sabra harpagula</i>	428
Q		—, Schilling's	172	SALDIDAE	144, 147, 204
<i>Quedius</i>	275	—, Short-winged	172	<i>Saldula arenicola</i>	204
— <i>cruentus</i>	276	—, Transparent	171	— <i>pallipes</i>	204
— <i>dilatatus</i>	276	RHOPALIDAE	144, 147, 170	— <i>palustris</i>	204

INDEX

<i>Saldula saltatoria</i>	204	Sawfly, Yellow-banded	469	Sedge, Mottled	373
Sallow	456	<i>Scaeva pyrastris</i>	354	—, Rhomboid Cinnamon	372
—, Dusky	456	Scale Insect, Horse-chestnut	227	—, Silver	370, 376
Sally, Common Yellow	78	—, Woolly Currant	227	—, Two-spotted Red	371
—, Scarce Yellow	78	Scaly-cricket	87, 102	—, White-spotted Cinnamon	372
—, Small Yellow	74, 77	SCALY-CRICKETS	87, 102	—, Yellow-spotted	370, 371
—, Western Small Yellow	77	<i>Scaphidium quadrimaculatum</i> ...	280	<i>Sehirus luctuosus</i>	152
SALPINGIDAE	252	SCARAB BEETLES	244, 282	<i>Selatosomus aeneus</i>	295
<i>Salpingus ruficollis</i>	252	SCARAB SHIELDBUGS	145, 165	<i>Selenia lunularia</i>	440
SAND WASPS	521, 522	SCARABAEIDAE	244, 282	— <i>tetralunaria</i>	440
Sandrunner	163	<i>Scathophaga stercoraria</i>	343	SEPSIDAE	340
—, Large	156	SCATHOPHAGIDAE	343	<i>Sepsis cynipsea</i>	340
—, Purfleet	156	Scavenger, Common Black	340	<i>Serica brunnea</i>	284
SAP BEETLES	250	Scelionid	478	<i>Sericomyia silentis</i>	355
<i>Saperda populnea</i>	302	<i>Schistocerca gregaria</i>	104	<i>Sericostoma personatum</i>	374
— <i>scalaris</i>	302	<i>Sciara hemerobioides</i>	335	SERICOSTOMATIDAE	370, 374
<i>Sapyga quinquepunctata</i>	501	SCIARIDAE	335	<i>Serratella ignita</i>	44
SAPYRIDAE	489, 501	<i>Sciocoris cursitans</i>	163	<i>Sesia apiformis</i>	424
<i>Sarcophaga carnaria</i>	342	— <i>homalonotus</i>	156	— <i>bembeciformis</i>	424
SARCOPHAGIDAE	342	— <i>sideritidis</i>	156	SESIIDAE	412, 424
<i>Sargus bipunctatus</i>	352	SCIOMYZIDAE	340	Shades, Angle	413, 457
<i>Saturnia pavonia</i>	427	SCIRTIDAE	244	Shaggy bees	541, 569
SATURNIIDAE	410, 427	Scissor bees	540, 556	Sharp-tail bees	540, 555
<i>Satyrium pruni</i>	402	<i>Scoliopteryx libatrix</i>	451	Shell, Yellow	434
— <i>w-album</i>	23, 402	<i>Scolopostethus decoratus</i>	180	Shieldbug, Austrian Tortoise	155
SAUCER BUGS	143, 207	— <i>thomsoni</i>	180	—, Bilberry	150
SAWFLIES	22, 466, 467–470	<i>Scolytus multistriatus</i>	326	—, Birch	150
Sawfly, Alder	468	Scorpion, Water	142, 207	—, Bishop's Mitre	156, 164
—, Birch	470	SCORPIONFLIES	14, 365	—, Black-shouldered	157, 161
—, Black-backed	469	Scorpionfly, Common	366, 367	—, Blue	140, 156, 157, 159
—, Bracken	469	—, German	365, 366, 367	—, Bordered	153
—, Bramble	467	—, Scarce	366, 367	—, Bronze	138, 141, 157, 161
—, Charming	468	<i>Scotopteryx chenopodiata</i>	441	—, Cornish	151
—, Dusky-horned Scabious	470	SCRAPTIIDAE	253	—, Cow-wheat	151, 152
—, Figwort	467, 468	SCREECH BEETLES	242	—, Crucifer	158
—, Honeysuckle	470	SCUTELLERIDAE	145, 154	—, Down	151, 152
—, Large Rose	467	<i>Scymnus frontalis</i>	314	—, Elongate	156
—, Orange	469	— <i>suturalis</i>	314	—, Forget-me-not	151, 152
—, Orange-horned Scabious	466, 467, 470	Scymnus, Angle-spotted	314	—, Gorse	157, 162
—, Rose	467	—, Pine	314	—, Greater-streaked	154
—, Scarce Honeysuckle	470	SCYTHRIDIDAE	408	—, Green	25, 157, 162
—, Slate	468	<i>Scythris empetrella</i>	408	—, Hairy	145, 159, 160
—, Solomon's-seal	468	Sedge, Bristly	370, 373	—, Hawthorn	150
—, Spotted	469	—, Broad Brown	373	—, Heath	153
—, Tormentil	469	—, Brown	373	—, Heather	157, 161
—, Turnip	469	—, Cinnamon	372	—, Juniper	145, 149
—, Variable	468	—, Crescent Cinnamon	372	—, Knobbed	156, 164
—, Wetland	468	—, Large Red	370, 371	—, Lesser-streaked	154
		—, Medium	370, 374	—, Mottled	157, 160

Shieldbug, New Forest	157, 159	Silverfish	11, 38, 39	SOFT-WINGED FLOWER	
—, Ornate	158	—, Four-lined	39	BEETLES	248
—, Parent	150	—, Grey	38, 39	SOLDIER BEETLES	247
—, Petite	151	Silverhorn, Black	375	SOLDIERFLIES	332, 336, 351
—, Pied	145, 153	—, Bluish-black	375	<i>Solva marginata</i>	336
—, Rambur's Pied	153	—, Brown	375	<i>Somatochlora arctica</i>	67
—, Red-legged	157, 160	—, White-headed Brown	370, 375	— <i>metallica</i>	67
—, Scarab	145, 165	<i>Sinodendron cylindricum</i>	280	<i>Spathocera dalmanii</i>	169
—, Scarce Tortoise	155	SIPHONURIDAE	41	Spectacle	461
—, Scarlet	158	SIPHONAPTERA	11, 378	—, Dark	461
—, Small Grass	156, 164	<i>Siphonoperla torrentium</i>	77	<i>Speyeria aglaja</i>	394
—, Southern Green	157, 163	SIRICIDAE	470	<i>Sphaeridium scarabaeoides</i>	243
—, Spiked	137, 157, 163	<i>Sisyra nigra</i>	235	<i>Sphaeroderma testaceum</i>	315
—, Tortoise	145, 155	SISYRIDAE	231, 235	<i>Sphaerophoria scripta</i>	353
—, Trapezium	145	<i>Sitaris muralis</i>	288	SPHAGNUM BUGS	143
—, Vernal	157, 160	Skimmer, Black-tailed	72	SPHECIDAE	521, 522
—, White-shouldered	157, 161	—, Keeled	72	<i>Sphecodes geoffrellus</i>	538
—, Woundwort	157, 159	SKIMMERS	49, 68	— <i>gibbus</i>	557
SHINING FLOWER BEETLES	249	SKIN BEETLES	247	— <i>monilicornis</i>	557
SHIP-TIMBER BEETLES	247	Skipper, Chequered	384, 386	— <i>niger</i>	557
Shipton, Mother	449	—, Dingy	382, 384, 386	— <i>pellucidus</i>	556
SHORE FLIES	338	—, Essex	384, 385	SPHINGIDAE	23, 410, 431
Shorebug, Common	204	—, Grizzled	384, 386	<i>Sphinx ligustri</i>	23, 431
—, Estuarine	204	—, Large	384	— <i>pinastri</i>	431
—, Pale	204	—, Lulworth	384, 385	<i>Sphodromantis viridis</i>	116
—, White-banded	204	—, Silver-spotted	384, 385	SPIDER-HUNTING WASPS	489, 503
SHOREBUGS	144, 147, 204	—, Small	382, 384, 385	<i>Spilomena</i>	524
SHORT-PALPED CRANEFLIES	334	SKIPPERS	382, 384	— <i>trogodytes</i>	526
SHORT-WINGED FLOWER		SLUG MOTHS	411, 422	— <i>lubricipeda</i>	450
BEETLES	249	SMALL BROWN STONEFLIES	75, 76	— <i>lutea</i>	450
Shortspur, Saltmarsh	272	Small carpenter bees	539, 551	Spittlebug, Alder	213
Shoulderblade, Common	267	SMALL YELLOW SALLIES	75, 77	SPONGE FLIES	231, 235
SIALIDAE	238	<i>Smerinthus ocellata</i>	432	SPONGIPHORIDAE	81
<i>Sialis fuliginosa</i>	238	<i>Smicromyrme rufipes</i>	500	Spot, Gold	456
— <i>lutaria</i>	238	Snail-hunter, Common	245	—, Lempke's Gold	456
— <i>nigripes</i>	238	SNAIL-KILLING FLIES	340	Springtail-stalker, Common	265
<i>Sicus ferrugineus</i>	338	SNAKEFLIES	14, 22, 327	Spurgebug, Portland	174
SIGNAL FLIES	341	Snakefly, Oak	327, 328, 329	—, Wood	174
SILKEN FUNGUS BEETLES	249	—, Pine	328, 329	SPURGEBUGS	144, 147, 174
<i>Silpha tristis</i>	21	—, Scarce	328, 329	Spurwing, Small	42
SILPHIDAE	245	—, Small	328, 329	ST MARK'S FLIES	332, 334, 347
SILVANID BEETLES	249	SNIFEFLIES	336	STAG BEETLES	244, 280
Silvanid, Dark	249	Snipefly, Downlooker	336	<i>Stagonomus venustissimus</i>	159
SILVANIDAE	249	Snout	413, 451	STAPHYLINIDAE	244, 272
Silver-line, Brown	441	—, Barred	352	<i>Staphylinus</i>	275
SILVER-LINES	412, 463	SNOW FLEAS	368	— <i>dimidiaticornis</i>	277
Silver-lines, Green	412, 463	SOCIAL WASPS	489, 508	— <i>erythropterus</i>	277
—, Scarce	463	SOFT SCALES	222, 227	Staphylinus, Common	277
Silver-stiletto, Coastal	337	SOFT-BODIED PLANT BEETLES	244	—, Yellow-marked	277

<i>Stauropoctonus bombycivorus</i>	474	STILTBUGS	144, 147, 184	<i>Sympetrum flaveolum</i>	69
<i>Stauropus fagi</i>	443	<i>Stomoxys calcitrans</i>	362	— <i>fonscolombii</i>	71
<i>Stelis breviscula</i>	554	STONEFLIES	14, 24, 74	— <i>pedemontanum</i>	69
— <i>ornatula</i>	554	Stonefly, Common Black	79	— <i>sanguineum</i>	70
— <i>punctulatissima</i>	555	—, Large Dark	79	— <i>striolatum</i>	70
<i>Stenagostus rhombeus</i>	294	—, Large Two-spotted	79	— <i>vulgatum</i>	69
<i>Stenobothrus lineatus</i>	110	—, Orange-striped	78	SYMPHYTA	22, 466, 467–470
— <i>stigmaticus</i>	110	STRATIOMYIDAE	332, 336, 351	<i>Synanthedon culiciformis</i>	425
STENOCEPHALIDAE	144, 147, 174	<i>Stratiomys chamaeleon</i>	351	— <i>flaviventris</i>	425
<i>Stenocorus meridianus</i>	300	— <i>longicornis</i>	351	— <i>formicaeformis</i>	425
STENOPOSOIDAE	134, 135	— <i>potamida</i>	351	— <i>myopaeformis</i>	425
<i>Stenopsocus stigmaticus</i>	135	— <i>singularior</i>	351	— <i>tipuliformis</i>	425
<i>Stenostola dubia</i>	304	STREPSIPTERA	15, 377	— <i>vespiformis</i>	425
<i>Stenotus binotatus</i>	196	<i>Strongylogaster multifasciata</i>	469	<i>Synergus</i>	477
<i>Stenurella melanura</i>	298	<i>Strophosoma melanogrammum</i>	326	<i>Syromastus rhombeus</i>	167
— <i>nigra</i>	298	— <i>sus</i>	326	SYRPHIDAE	19, 332, 333, 338, 353
<i>Stephanitis rhododendri</i>	186	<i>Sturmia bella</i>	19, 364	<i>Syrphus ribesii</i>	355
— <i>takeyai</i>	186	<i>Stygnocoris sabulosus</i>	182	<i>Syrphus</i> , Humming	355
<i>Stephostethus lardarius</i>	250	STYLOPIDAE	377	<i>Systellonotus triguttatus</i>	202
STERNORRHYNCHA	141, 222	STYLOPIDS	377		
<i>Stethophyma grossum</i>	105	STYLOPS	15, 377		
Stick-insect, Black-spined ...	120, 121	<i>Stylops ater</i>	377		
—, French	124	— <i>aterrimus</i>	377	TABANIDAE	332, 336, 348
—, Laboratory	119, 123	— <i>melittae</i>	377	<i>Tabanus bromius</i>	348
—, Mediterranean	119, 124	— <i>nassonowi</i>	377	— <i>miki</i>	349
—, Prickly	25, 120	Stylops, Common	377	— <i>sudeticus</i>	348
—, Smooth	31, 117, 122	<i>Subacronicta megacephala</i>	461	Tabby, Scarce	414
—, Thailand	123	<i>Subcoccinella</i>		<i>Tachina fera</i>	364
—, Unarmed	25, 118, 120, 121	<i>vigintiquattuorpunctata</i>	311	— <i>grossa</i>	364
—, Water	207	<i>Subilla confinis</i>	329	Tachind, Small Black	332
—, White's	124	<i>Supella longipalpa</i>	129	—, Beautiful	19, 364
STICK-INSECTS	12, 25, 117	Supertramp	258	—, Blue-winged	342, 364
<i>Stictoleptura cordigera</i>	299	Swallowtail	23, 382, 383	—, Common	364
— <i>rubra</i>	299	SWALLOWTAILS	382, 383	—, Giant	364
— <i>scutellata</i>	299	Sweeper, Chimney	436	TACHINIDAE	19, 332, 342, 364
<i>Stictopleurus abutilon</i>	170	SWIFT MOTHS	411, 423	<i>Tachycixius pilosus</i>	219
— <i>punctatonervosus</i>	170	Swift, Common	423	<i>Tachysphex</i>	525
<i>Stictotarsus duodecimpustulatus</i>	256	—, Gold	423	— <i>pompiliformis</i>	529
<i>Stigmus</i>	524	—, Orange	411, 423	Tachysphex, Common	529
— <i>pendulus</i>	526	Sycamore	460	TAENIOPHYTERYGIDAE	75, 77
— <i>solskyi</i>	526	<i>Sycophila biguttata</i>	477	<i>Tanyptera</i>	343
STILETTO FLIES	337	<i>Symmorphus</i>	509	— <i>atrata</i>	344
STILT-LEGGED FLIES	339	— <i>bifasciatus</i>	518	— <i>nigricornis</i>	344
Stiltbug, Common	185	— <i>connexus</i>	518	<i>Tasgius</i>	275
—, Enchanter's	184	— <i>crassicornis</i>	518	— <i>morsitans</i>	278
—, Hairy	185	— <i>gracilis</i>	518	<i>Tasgius</i> , Red-legged	278
—, Signoret's	185	<i>Sympecma fusca</i>	51	<i>Teleiodes luculella</i>	417
—, Spined	184	<i>Sympetrum</i>	68	— <i>flavimaculella</i>	417
—, Straw	184	— <i>danae</i>	71	TENEBRIONIDAE	252
				TENTHREDINIDAE	468

<i>Tenthredo amoena</i>	468	<i>Thymalus limbatus</i>	248	TORYMIDAE	478
— <i>livida</i>	468	THYREOCORIDAE	145, 165	TORYMINE WASPS	478
— <i>maculata</i>	469	<i>Thyreocoris scarabaeoides</i>	165	<i>Torymus auratus</i>	478
— <i>mesomela</i>	469	<i>Thyridanthrax fenestratus</i>	349	<i>Trapezonotus arenarius</i>	179
— <i>scrophulariae</i>	468	THYSANOPTERA	12, 228	— <i>desertus</i>	179
— <i>temula</i>	469	Tiger, Cream-spot	448	— <i>ullrichi</i>	179
<i>Tenthredopsis litterata</i>	468	—, Garden	448	Treble-bar	439
Tephritid, Spear	341	—, Jersey	448	—, Lesser	439
TEPHRITIDAE	341	—, Ruby	449	Tree-cricket, European	98, 99
TEPHRITIDS	341	—, Scarlet	448	Treehopper, Broom	211
Termite, Iberian	126, 127	—, Wood	413, 449	—, Horned	210, 211
TERMITES	12, 125, 127	TIGERS	413, 447	TREEHOPPERS	210, 211
<i>Tetramorium</i>	491	<i>Tillus elongatus</i>	248	Treerunner, Great Four-spot	274
— <i>atratum</i>	498	<i>Timandra comae</i>	434	<i>Triaxomera fulvimitrella</i>	418
<i>Tetramorium caespitum</i>	499	<i>Timarcha goettingensis</i>	319	<i>Trichius fasciatus</i>	282
<i>Tetratoma ancora</i>	251	— <i>tenebricosa</i>	21, 319	TRICHOPTERA	14, 22, 369
TETRATOMIDAE	251	TINEIDAE	407, 418	<i>Trichrysis</i>	481
TETRIGIDAE	86, 114	<i>Tineola bisselliella</i>	409	— <i>cyanea</i>	482
<i>Tetrix ceperoi</i>	114	TINGIDAE	146, 186	TRIGONIDIIDAE	87, 98
— <i>subulata</i>	114	<i>Tingis cardui</i>	187	<i>Trigoniophthalmus</i>	35
— <i>undulata</i>	114	<i>Tiphia femorata</i>	502	— <i>alternatus</i>	37
<i>Tetropium castaneum</i>	307	— <i>minuta</i>	502	<i>Trigonocranus emmeae</i>	218
— <i>gabrieli</i>	307	<i>Tiphia</i> , Large	502	<i>Triodia sylvina</i>	423
<i>Tetrops praeustus</i>	305	—, Small	502	<i>Triplax aenea</i>	248
— <i>starkii</i>	305	TIPHIID WASPS	489, 502	<i>Tritomegas</i>	151
<i>Tettigometra impressopunctata</i>	222	TIPHIIDAE	489, 502	— <i>bicolor</i>	153
TETTIGOMETRID		TIPHIOIDEA	479, 489	— <i>sexmaculatus</i>	153
PLANTHOPPERS	210, 222	<i>Tipula</i>	19, 343	<i>Trixagus dermestoides</i>	246
TETTIGOMETRIDAE	210, 222	— <i>holoptera</i>	345	TROGIDAE	245
<i>Tettigonia viridissima</i>	90	— <i>maxima</i>	344	TROGOSSITID BEETLES	248
TETTIGONIIDAE	25, 87, 88	— <i>oleracea</i>	345	Trogossitid, Tortoise	248
<i>Teuchestes fossor</i>	286	— <i>pagana</i>	345	TROGOSSITIDAE	248
<i>Thaumatopoea pityocampa</i>	443	— <i>paludosa</i>	345	<i>Troilus luridus</i>	161
— <i>processionea</i>	443	— <i>vernalis</i>	344	<i>Trox scaber</i>	245
<i>Thecla betulae</i>	402	TIPULIDAE	19, 332, 333, 334, 343	<i>Trypoxylon</i>	524
THEREVIDAE	337	<i>Tolmerus atricapillus</i>	360	— <i>attenuatum</i>	528
<i>Thermobia domestica</i>	39	— <i>cingulatus</i>	360	<i>Tuberolachnus salignus</i>	224
THICK-HEADED FLIES	338	— <i>cowini</i>	360	TUBIC MOTHS	408, 418
Thorn, Lunar	440	TOOTH-NOSED SNOUT WEEVILS	254	<i>Tubic</i> , Sulphur	418
—, Purple	412, 440	TORTOISE SHIELDBUGS	145, 154	TUMBLING FLOWER BEETLES	251
THRIPIDAE	229	<i>Tortoiseshell</i> , Large	390, 393	<i>Tuponia brevirostris</i>	202
THRIPS	12, 228	—, Scarce	390, 393	— <i>hippophaes</i>	202
Thrips, Armed	228, 229	—, Small	23, 364, 390, 392	— <i>mixticolor</i>	202
—, Broom	229	TORTRICIDAE	409, 419	Tussock, Dark	447
—, Gorse	229	TORTRIX MOTHS	409, 419	—, Nut-tree	459
THROSCID BEETLES	246	<i>Tortrix viridana</i>	419	—, Pale	413, 447
Throscid, Common	246	<i>Tortrix</i> , Cinquefoil	419	TUSOCKS	413, 447
THROSCIDAE	246	—, Green Oak	409, 419	<i>Typhlocyba quercus</i>	217
<i>Thyatira batis</i>	429			TYPICAL SHIELDBUGS	145, 156

<i>Tyria jacobaeae</i>	452	<i>Volucella bombylans</i>	358	Wasp, French Spider	504
<i>Tytthaspis sedecimpunctata</i>	313	— <i>inflata</i>	358	—, Garden Mason	516, 517
U		— <i>pellucens</i>	358	—, German	510, 512, 513
<i>Uleiota planatus</i>	249	— <i>zonaria</i>	358	—, Glowing Cuckoo	484
ULIDIIDAE	341	W		—, Golden Cuckoo	483
<i>Ulopa reticulata</i>	217	Wainscot, Common	413	—, Hairy Sand	522
Umber, Mottled	439	Wall	391, 400	—, Heath Potter	520
—, Waved	435	WARBLE FLIES	342	—, Heath Sand	522, 523
Underwing, Beautiful Yellow	458	Wart-biter	85, 88, 91	—, Heath Spider	504
—, Broad-bordered Yellow	458	Wasp, Armed Crabro Digger	533	—, Hedgerow Darwin ..	466, 471, 472
—, Copper	459	—, Aspen Cuckoo	486	—, Holly Blue Darwin ..	475
—, Dark Crimson	23, 453	—, Austrian Cuckoo	512, 513	—, Horned Black	525
—, Large Yellow	413, 458	—, Banded-wing Darwin	472	—, Illiger's Cuckoo	486, 488
—, Light Crimson	453	—, Bee Darwin	476	—, Impressive Cuckoo ..	486, 487
—, Light Orange	436	—, Bee-wolf Cuckoo	485	—, Javelin	478
—, Lunar	461	—, Black Darwin	472	—, Jumping Spider	489, 505
—, Orange	412, 436	—, Black Spider	506	—, Kirby's Sand	522
—, Red	413, 453	—, Black-and-yellow Chalcid ..	476	—, Large Aspen Mason ..	518
—, Small Dark Yellow	458	—, Black-banded Spider	506	—, Large Spurred Digger ..	536
—, Small Yellow	458	—, Black-headed Cuckoo	488	—, Leaden Spider	503, 507
—, Svensson's Copper	459	—, Black-headed Mason	519	—, Linnæus's Cuckoo	486, 487
UNDERWINGS	413, 447	—, Black-tipped Darwin	475	—, Linsenmaier's Cuckoo ..	486, 487
<i>Urocerus gigas</i>	470	—, Blood Spider	503, 505	—, Little Mason	509, 520
<i>Urophora stylata</i>	341	—, Blue Cuckoo	481, 482	—, Lobster Darwin	474
<i>Utecha triviva</i>	217	—, Box-headed Mason	509, 520	—, Marble Gall	471, 477
V		—, Broad-banded Digger	537	—, Maritime Mason	516
<i>Valenzuela flavidus</i>	135	—, Club-horned	489, 501	—, Median	510, 514, 515
<i>Vanessa atalanta</i>	392	—, Common	466, 512, 513	—, Metallic Green	478
— <i>cardui</i>	392	—, Common Evergetes Spider ..	504	—, Minute Black	525
Vapourer	447	—, Common Spiny Digger	530	—, Mournful	526
—, Scarce	447	—, Confused Darwin	473	—, Multi-coloured Cuckoo ..	486
Variagated cuckoo bees	538, 551	—, Cream-striped Darwin	474	—, Narrow-bodied Cuckoo ..	486, 487
<i>Variimorda villosa</i>	251	—, Dahlbom's Digger	526	—, Neglected Cuckoo	481, 482
<i>Velia caprai</i>	205	—, Dark-winged Digger	524, 537	—, Niemelä's Cuckoo	485
<i>Velia saulii</i>	205	—, Dryudella Cuckoo	484	—, Noble Cuckoo	485
VELIIDAE	143, 205	—, Dull Cuckoo	484	—, Northern Osmia Cuckoo ..	482
VELVET ANTS	489, 500	—, Dusky Spider	507	—, Norwegian	514
<i>Vespa crabro</i>	20, 511	—, Early Mason	489, 516	—, Nymphal Paper	515
— <i>velutina</i>	511	—, Elegant Spider	506	—, Oak Eggar Darwin	475
VESPIDAE	20, 489, 508	—, European Paper	515	—, Orange Darwin	475
VESPOIDEA	479, 489	—, Farge's Digger	534	—, Orange-brown Darwin ..	475
<i>Vespula austriaca</i>	513	—, Fen Mason	519	—, Orange-legged Darwin ..	474
— <i>germanica</i>	513	—, Field Digger	531	—, Orange-legged Digger ..	531
— <i>rufa</i>	512	—, Figwort Mason	518	—, Ornate Tailed Digger ..	532
— <i>vulgaris</i>	513	—, Five-spotted Club-horned ..	501	—, Pale-jawed Spiny Digger ..	530
<i>Villa modesta</i>	349	—, Four-banded Digger	537	—, Panzer's Cuckoo	482
<i>Villa, Dune</i>	349	—, Four-banded Mason	509	—, Panzer's Digger	531
		—, French Paper	515	—, Part-golden Cuckoo	488
				—, Perturbed Spider	504

Wasp, Punctured Cuckoo	483	Wasp, Wall Mason	516, 517	Whirligig, Common	242
—, Pupa-killer Darwin	474	—, White-lipped Digger	531	WHITE-LEGGED	
—, Purbeck Mason	509, 520	—, White-spotted Digger	525, 529	DAMSELFLIES	48, 53
—, Pursweb Spider	503, 505	—, White-spurred Spider	503, 505	White, Bath	387
—, Radiant Cuckoo	482	—, White-streaked Spider	507	—, Black-veined	387
—, Rare Elampus Cuckoo	482	—, White-striped Darwin	473	—, Bordered	442
—, Rare Potter	520	—, White-tipped Darwin	473	—, Cryptic Wood	387, 388
—, Red	465, 512	—, Willow Mason	518	—, Green-veined	387, 389
—, Red-banded Sand	522, 523	—, Woodland Darwin	474	—, Large	387, 389
—, Red-bodied Stem	528	—, Woodland Digger	526	—, Marbled	391, 397
—, Red-eyed Ormyrid	466, 476	—, Yellow-and-black Darwin	472	—, Small	382, 387, 389
—, Red-legged Digger	532	—, Yellow-faced Spider	503, 507	—, Wood	387, 388
—, Red-legged Spider	507	—, Yellow-striped Darwin	473	Whiteface, Yellow-spotted	68
—, Red-tipped Stem	528	—, Yellow-tipped Darwin	472	WHITEFLIES	222, 226
—, Ridge-saddled Spider	503, 504	WASPS	11, 16, 20, 464, 470, 479	Whitefly, Cabbage	226
—, Rudd's Cuckoo	486, 488	WATER CRICKETS	143, 205	WHITES	382, 387
—, Rugged Cuckoo	484	WATER MEASURERS	142, 205	Wing, Bird's	455
—, Sabre	476	WATER SCORPIONS	142, 207	—, Grouse	375
—, Sand Tailed Digger	532	<i>Watsonalla binaria</i>	428	WINGLESS CAMEL-CRICKETS	87, 102
—, Saxon	514, 515	— <i>cultraria</i>	429	WOOD COCKROACHES	126, 129
—, Scarce Crabro Digger	533	Wave, Plain	434	Wood-borer, Fan-bearing	247
—, Shieldbug Digger	525, 529	—, Riband	412, 434	Wood-cricket	98, 99
—, Shining Cuckoo	483	WAX-FLIES	231, 236	WOOD-CRICKETS	87, 98
—, Short-winged Darwin	472	Wax-fly, Common	236	WOOD-SOLDIERFLIES	336
—, Silver Spiny Digger	530	Webspinner, Wisley	115	Wood-soldierfly, Drab	336
—, Slender Wood-borer	528	WEBSPINNERS	11, 115	Wood, Speckled	391, 397
—, Slender-bodied Digger	533	Weevil, Acorn	325	Woodwasp, Alder	470
—, Small Aspen Mason	518	—, Armadillo	324	—, Giant	466, 470
—, Small Elephant Darwin	474	—, Black Marram	324	WOODWASPS	466, 467
—, Small Javelin	478	—, Chequered	325	Wool-carder bees	540, 555
—, Small Spurred Digger	536	—, Common Leaf	325		
—, Small-notched Mason	516, 517	—, Garden Figwort	323	X	
—, Solsky's	526	—, Green Nettle	325	<i>Xanthogramma pedissequum</i>	353
—, Spiny Mason	519	—, Hazel Leaf-roller	254	<i>Xanthorhoe fluctuata</i>	438
—, Stocky Mason	488	—, Heather	326	<i>Xanthostigma xanthostigma</i>	329
—, Striped Darwin	475	—, Leaf-rolling	254	<i>Xestia c-nigrum</i>	454
—, Three-banded Digger	536	—, Loosestrife	254	<i>Xiphidria camelus</i>	470
—, Three-banded Mason	516, 517	—, Map	324	XIPHYDRIIDAE	470
—, Three-spotted Digger	536	—, Nut	323, 325	<i>Xylocopa</i>	539
—, Thrips	526	—, Nut Leaf	326	— <i>violacea</i>	552
—, Tiger Beetle-hunting	489, 502	—, Pine	254, 323	XYLOMYIDAE	336
—, Tree	514	—, Red-legged	324	XYLOPHAGIDAE	336
—, Tuberculate Cuckoo	486, 488	—, Sea Beet	324	<i>Xylophagus ater</i>	336
—, Two-girdled Digger	534	—, Thistle Head	325	<i>Xylota segnis</i>	357
—, Two-spotted Oak Gall	477	—, Vine	324	— <i>sylvarum</i>	332
—, Umbellifer Darwin	476	—, Violet	254		
—, Variable Spider	506	—, White-spotted Fungus	254	Y	
—, Variegated Spider	507	WEEVILS	254, 323	Y, Silver	413, 454
—, Violet Cuckoo	483	WHIRLIGIG BEETLES	242	Yellow-face bees	541, 561

INDEX

Yellow-tail	447	Z	<i>Zygaena filipendulae</i>	426
Yellow, Berger's Clouded	387, 388	<i>Zaraea fasciata</i>	— <i>lonicerae</i>	426
—, Clouded	382, 387, 388	<i>Zeugophora subspinosa</i>	— <i>purpuralis</i>	426
—, Pale Clouded	387, 388	<i>Zeuzera pyrina</i>	— <i>trifolii</i>	426
—, Speckled	437	<i>Zicrona caerulea</i>	ZYGAENIDAE	412, 426
YELLOWS	382, 387	ZOPHERID BEETLES	ZYGENTOMA	11, 38
<i>Yponomeuta cagnagella</i>	417	ZOPHERIDAE		
YPONOMEUTIDAE	407, 417	<i>Zwicknia bifrons</i>		