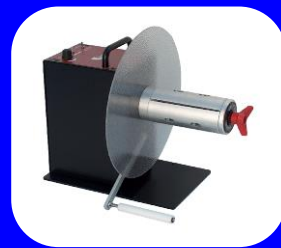
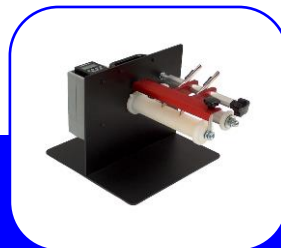


LABELMATE

PRODUCT CATALOGUE AND PRICE LIST 2015



MADE IN BELGIUM

LABELMATE

End user Prices as of 01/2015 – Version 2.0

The World's Leading Manufacturer of Label Rewinders, Unwinders, Dispensers, Slitters, Counters, Transport Systems and Core Chucks.

LABEL DISPENSERS

CHOOSING THE RIGHT DISPENSER	3
"LD-RS & LD-U" POWERED LABEL DISPENSERS.....	5

LABEL REWINDERS

CHOOSING THE RIGHT CAT-3 REWINDER *	9
FULL SIZE "CAT" HEAVY-DUTY LABEL REWINDERS	10
LOW-COST "MINI-CAT" LABEL REWINDERS	13
"TWIN-CAT-2" DUAL SPINDLE UNWIND / REWIND STATIONS.....	15
"LC-CAT" PAPER LOOP CONTROLLED LABEL REWINDERS / UNWINDERS	18
"CAT-3-LC" PAPER LOOP CONTROLLED LABEL REWINDERS / UNWINDERS WITH ADJUSTABLE TENSION	20

LABEL UNWINDERS

CHOOSING THE RIGHT UNWINDER.....	22
"UCAT" HEAVY-DUTY LABEL UNWINDERS	24

Many rewinders can also be used as unwinders, please check the rewinders section too!

"QUICK-CHUCKS"™

"QUICK-CHUCKS"™ QUICK-LOADING CORE CHUCKS FOR VOLUME LABEL PRODUCTION	27
--	----

LABEL SLITTERS & SLITTING STATIONS

HEAVY-DUTY LABEL SLITTERS & SLITTING STATIONS	29
"SP" LABEL SEPARATOR PLATES FOR SLITTERS	32

LABEL COUNTING SYSTEMS

"RRC-330" REEL-TO-REEL COUNTING SYSTEMS	33
"COUNT" HEAVY-DUTY LABEL COUNTERS.....	35

LABEL TRANSPORT SYSTEMS

"PM-300-LS" & "PM-300-HS" REEL-TO-REEL LABEL PRINTER MECHANISM FOR INKJET AND LASER HEADS	37
"PM-300-CS" CONSTANT SPEED REEL-TO-REEL LABEL PRINTER MECHANISM FOR INKJET AND LASER HEADS	38
"PM-300-CS-STEP" REEL-TO-REEL CONSTANT SPEED SYSTEM	39

INKJET LABEL PRINTER

"P-300" REEL-TO-REEL INKJET LABEL PRINTER.....	41
--	----

IMPORTANT INFORMATION

- All products are manufactured to LABELMATE's World-Class Quality Standards and are maintenance-free.
- The proven high-reliability of our Products has lead us to increase our famous warranty on all Rewinders and Unwinders to an unmatched **5-Year Parts and Labour Limited Warranty**, five times the industry norm! All other LABELMATE Products are still backed by our renowned **full 3-Year Parts and Labour Limited Warranty**. (The warranty period for power supplies is 1-year).



Label Rewinders
Label Unwinders



Label Dispensers
Quick-Chucks
Label Slitters & Slitting Stations
Label Counting Systems
Label Transport Systems
Inkjet Label Printer

- Units returned for repair or exchange must have a RMA form.
- Product Data Sheets are available on-line 24-hours a day www.labelmate.com/europe/download/
- If you don't see what you want please ask us. Many special configurations are available (120-vac 60 Hz models: same price).
- A 25 Euros fee will be charged for re-packaging costs in case of returned units due to a mistake in the order.

Prices are in Euros, Ex-Works shipping point. Prices and specifications are subject to change without notice.

Previous price lists are obsolete.

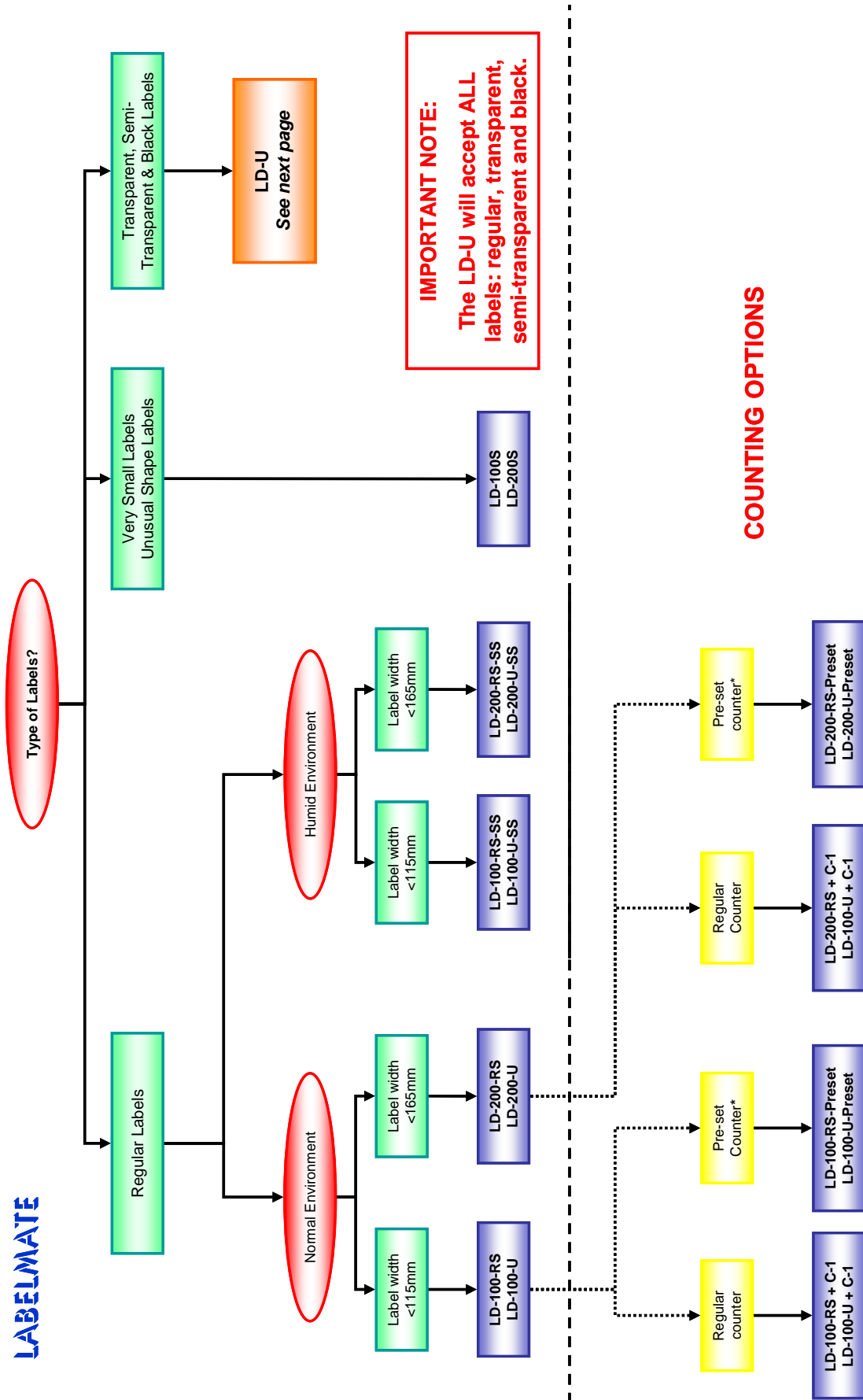
PRICES DO NOT INCLUDE DELIVERY COSTS.

Shipping is done with UPS Standard Service unless specified otherwise in the order.

WHAT'S NEW IN THIS CATALOGUE?

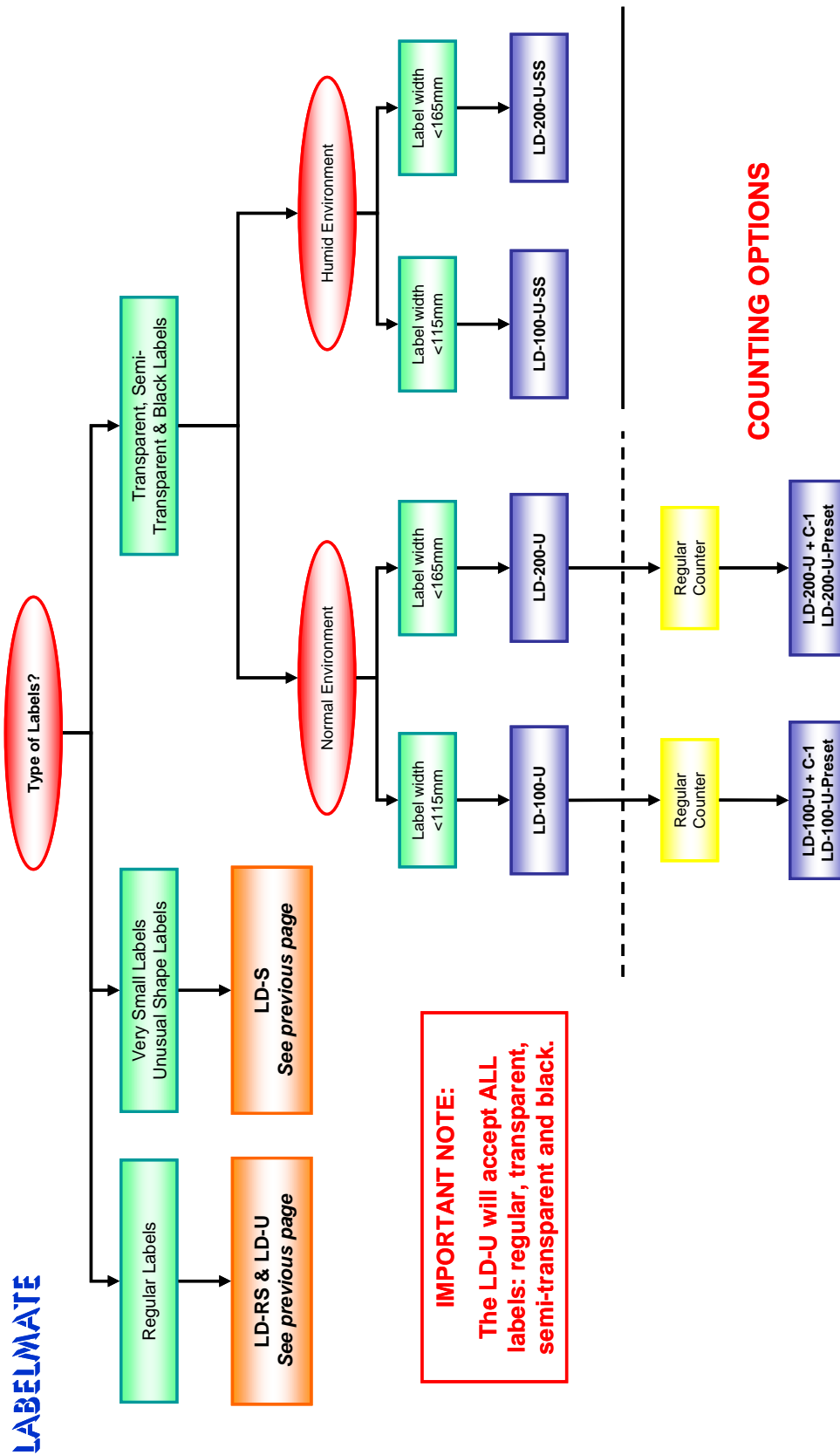
- All products in the catalogue now have a unique Part Number to facilitate your ordering process.
- A new product the "CAT-3-LC" is on page 22.
- The UCAT-S, PM-300 and P-300 are now fitted with the Adjustable Wearless Brake (AWB).
- The "LC-CAT" has been moved to the "Rewinders" section.
- Several prices of the options have been changed. These prices are in "Bold" in the lists.

CHOOSING THE RIGHT DISPENSER



*The Pre-set counter stops the dispenser when pre-set count is reached.

CHOOSING THE RIGHT DISPENSER (Cont.)



“LD-RS & LD-U” POWERED LABEL DISPENSERS

The LD-RS Type Automatic Label Dispensers for all regular labels (not for transparent or black labels).

The LD-100-RS and LD-200-RS Label Dispensers offer state of the art convenience and durability. Using the latest opto-electronic technology, there is just one simple adjustment for label length.

A special Reflective Sensor sits below the label and reliably and accurately senses the leading edge of your label. As you pick up a label the next one is automatically and instantly advanced. The modern design presents the label right at the front of the machine, providing optimum convenience for both left-handed and right-handed operators. A “HIGH-LOW” Speed Switch allows adjustment for label length or operator preference. There are no mechanical position switches to cause adjustment or operational problems. The heavy-duty product design will stand up to the most demanding environments.

The LD-U Type Automatic Label Dispensers using a new “state of the art” reflective detector that allows the machine to dispense all types of labels, including transparent and black labels.

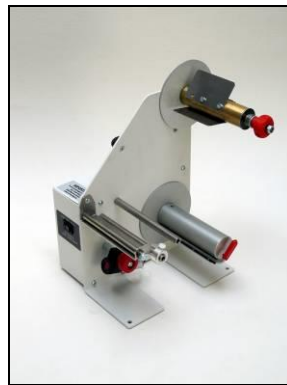
The LD-U range is using a compact photoelectric sensor with optic-fibre cable. The LD-100-U and LD-200-U offer the same advantages, convenience and durability as the popular LD-RS models with the extra benefit of dispensing any kind of labels.

Both models of LD-RS and LD-U are available in "SS" version, that features a stainless steel chassis and cover and can be used in humid environment. They are ideal for food industry and pharmaceutical applications.

The LD-S Type for very small, long or unusual shape labels.

The LD-100S or LD-200S do not have a sensor detection; the foot pedal allows you to continually advance labels at the rate you choose. The LD-100S and LD-200S also include an ON-OFF Foot Switch for production applications. It is ideal for very small or long labels.

All LABELMATE Label Dispensers are easy to set up, too. You just slide your roll of labels onto the built-in Core Holder. Then thread the label web through to the take-up spindle and your Label Dispenser is ready for use! Rugged, heavy-gauge steel construction and precision parts yield products of the highest quality. Designed for all-day, every-day use, these Dispensers are backed by LABELMATE's famous **3-Year Parts and Labour Limited Warranty** (1-Year on power supplies), assuring you trouble-free performance.

**LD-100-RS with Counter****LD-100-RS with AWB****LD-100-RS with Flanges****LD-100-U-SS****LD-200-U****LD-200S****January 2015**www.labelmateeurope.com brussels@labelmate.com

P/N	MODEL	DESCRIPTION	LABEL WIDTH (mm)	LABEL LENGTH (mm)	SPEED (cm/sec)	PRICE EURO
LMD001	LD-100-RS	Automatically advances the next label ready to pick. Fast label loading. Quick and convenient operation! Not for transparent labels. Size: W x D x H: 210 x 200 x 270 mm.	Up to 115	6 to 150*	11 Minimum	
LMD002	LD-200-RS	Same features as LD-100-RS but with wider label capacity. Size: W x D x H: 270 x 200 x 270 mm.	Up to 165	6 to 150*	11 Minimum	
LMD003	LD-100-RS-SS	Same features as LD-100-RS but in stainless steel. Size: W x D x H: 210 x 200 x 270 mm.	Up to 115	6 to 150*	11 Minimum	
LMD004	LD-200-RS-SS	Same features as LD-200-RS but in stainless steel. Size: W x D x H: 270 x 200 x 270 mm.	Up to 165	6 to 150*	11 Minimum	

LMD005	LD-100-U	Automatically advances the next label ready to pick. Fast label loading. Quick and convenient operation! For transparent and black labels. Size: W x D x H: 210 x 200 x 270 mm.	Up to 115	10 to 150* 20 to 150* for transp.	11 Minimum	
LMD006	LD-200-U	Same features as LD-100-U but with wider label capacity. Size: W x D x H: 270 x 200 x 270 mm.	Up to 165	10 to 150* 20 to 150* for transp.	11 Minimum	
LMD007	LD-100-U-SS	Same features as LD-100-U but in stainless steel. Size: W x D x H: 210 x 200 x 270 mm.	Up to 115	10 to 150* 20 to 150* for transp.	11 Minimum	
LMD008	LD-200-U-SS	Same features as LD-200-U but in stainless steel. Size: W x D x H: 270 x 200 x 270 mm.	Up to 165	10 to 150* 20 to 150* for transp.	11 Minimum	

LMD009	LD-100S	Label Dispenser with variable speed control and foot switch. Ideal for very small or long labels. Size: W x D x H: 210 x 200 x 270 mm.	Up to 115	5 to unlim.	11 Minimum	
LMD010	LD-200S	Same features as LD-100S but with wider label capacity. Size: W x D x H: 270 x 200 x 270 mm.	Up to 165	5 to unlim.	11 Minimum	

* Depending on the labels.

Our Label Dispensers (except with AWB option) are equipped with 38mm core holders that accept all cores from 40 to 76mm.

External roll diameter is 220mm (265mm with AWB option and 300mm with LD-DE option).

MAXIMUM LABEL ROLL WEIGHT: 6Kg.

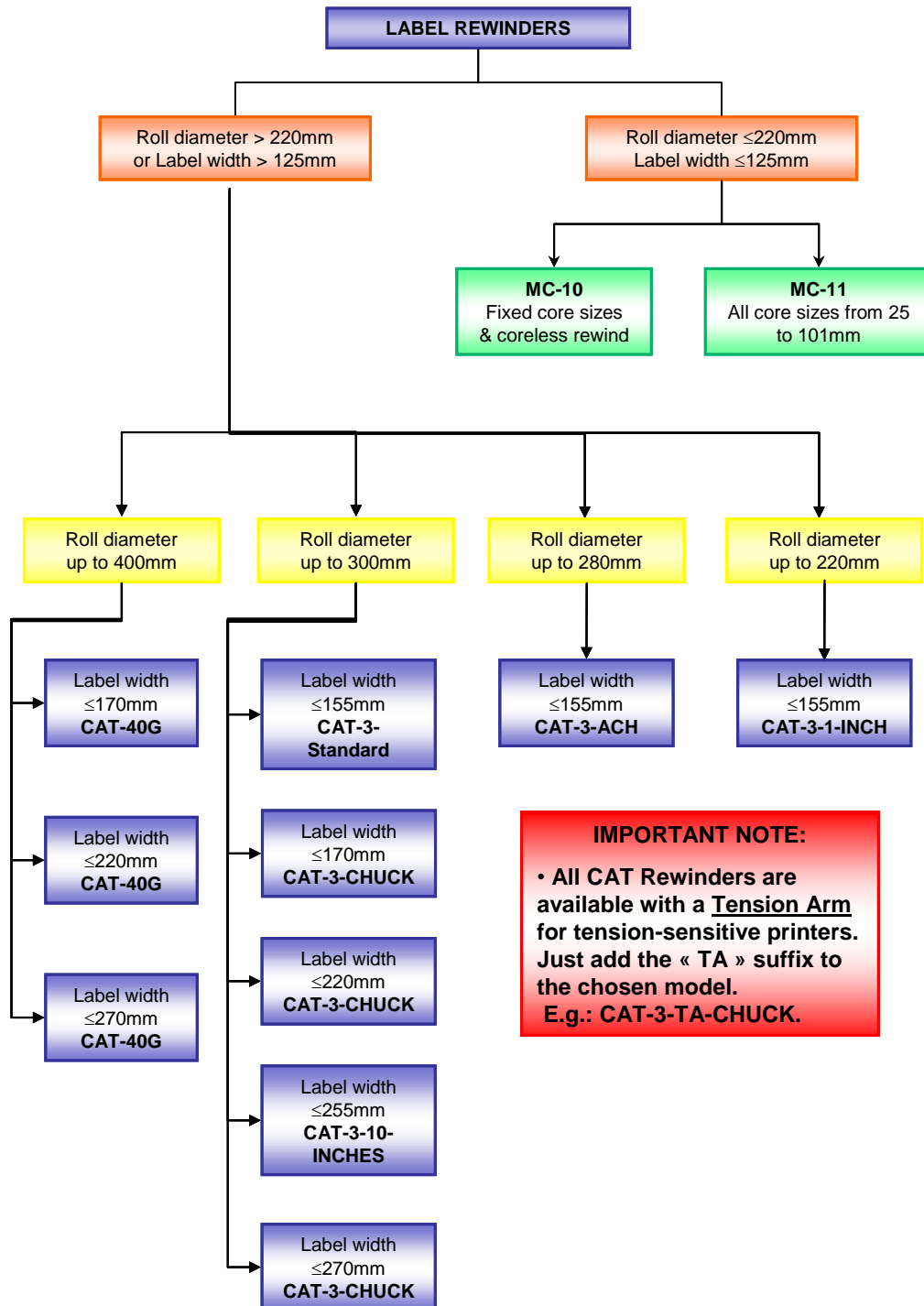
LABEL DISPENSERS OPTIONS

P/N	MODEL	DESCRIPTION	ROLL DIAM (mm)	SPEED (cm/sec)	PRICE EURO
LMX445	C-1	Counter option for all Label Dispensers LD-U & LD-RS. Not for SS versions.	-	-	
LMX446	PC-1	Pre-set counter that will stop the label dispenser after a pre-set count is reached.	-	-	
LMX447	New LD-AWB	Adjustable "wearless" brake system. Available on all models. Allows varying the roll tension to facilitate peeling of the labels. Increases the maximum roll diameter to 265 mm. 76mm standard. Available on request in 38, 40, 44, 50, 70 or 100mm. * Factory installed - replaces the standard nylon shaft.	265	-	
LMX448	LD-FLANGES-220	Inner and outer Flange option for Label Dispenser (per pair). Fits all models (<i>not compatible with LD-AWB</i>). Recommended for narrow labels.	220	-	
LMX449	LD-FLANGES-300	Inner and outer Flange option for Label Dispenser (per pair). Fits all models (<i>not compatible with LD-AWB</i>). To be used with LD-DE. Recommended for narrow labels.	300	-	
LMX366	LD-DE	Diameter extension: Allows using rolls with outer diameters up to 300mm (factory installed).	300	-	
LMX367	LD-DE-SS	Diameter extension: Allows using rolls with outer diameters up to 300mm (factory installed). Stainless steel version.	300	-	
LMX054	PS-11V	220-240V – 50Hz AC Power Supply for LD. Output: 11V – 2.5A <i>Included with LD.</i>	-	-	
LMX056	PS-18V	High-speed power supply to increase speed of the dispenser.	-	14 Minimum	
LMX450	EXT. COMMAND	The LD dispenses one label when receives a signal (contact closure). Factory installed. Only for LD-RS / LD-U models.	-	-	
LMX451	BATTERY PACK	Complete kit to operate the LD on a battery. Includes: battery, charger and cables. Replace the standard power supply. Battery works for +/- 8 hours and needs 8 hours to re-charge. Output: DC 12V.	-	-	

Shipping Weight: Approximately 6 to 8 Kg.

Power: 220/240-vac 50-Hz. 120-vac 60-Hz power supply is also available.

Choosing the right CAT-3 Rewinder *



* This table is to help you decide which CAT-3 best fits your application. It does not comprise other ranges such as TWIN-CAT-2, LC-CAT and CAT-3-LC that are for more specific applications.

OTHER IMPORTANT INFORMATION:

1. The **CAT-3-ACH** has an Adjustable Core Holder that accepts all core sizes from 25 to 101mm.
2. The Quick-Chuck used on the **CAT-40G** and **CAT-3-CHUCK** is available in 3 different lengths: 170, 220 and 270mm.
3. The **CAT-3-Standard**, **CAT-3-10-INCHES** and **CAT-3-CHUCK** are available in various core sizes.
4. The **CAT-3-1-INCH** is used for core diameter of 1" (25,4mm).

January 2015

Full Size “CAT” Heavy-Duty Label Rewinders

LABELMATE's Constant Adjustable Torque™ ("CAT") technology has made the silent, easy-to-use CAT-3 the "Industry Standard" Label Rewinder. There are no awkward troublesome belts or clutches.

The CAT-3 Heavy-Duty Label Rewinders

The **CAT-3-STANDARD** handles labels up to 155 mm wide and will wind a roll of labels up to a 300 mm diameter. Torque and Direction are fully controllable from the Control Panel. Dual torque ranges provide plenty of power for use with a LABELMATE Slitter, too.

For wider labels up to 255 mm (10"), choose the **CAT-3-10-INCHES**.

Model **CAT-3-ACH** includes an Adjustable Core Holder that accepts any core size from 25 mm to 101 mm in diameter and up to 155 mm in width.

The optional Adjustable Paper Guide APG-CAT with movable arm can be installed in minutes on the base of the CAT-3-ACH or CHUCK. This inexpensive accessory guides the outer edge of the label roll as it's being rewound to ensure even roll alignment.

The **CAT-3-CHUCK** includes LABELMATE's durable "Quick-Chuck"™ quick-locking Core Chuck, permitting the fastest loading and unloading of cores and label rolls. The CAT-3-CHUCK is ideal for label slitting applications, high-volume production environments, or anywhere the ultimate convenience in Rewinders is desired. The CAT-3-CHUCK is available for 38-, 40-, 44-, 70, 76- and 100 mm cores

The **CAT-40G** is gear motor driven for more torque. It accepts bigger rolls with a diameter up to 400 mm. It is equipped with the LABELMATE "Quick-Chuck"™ quick-locking Core Chuck.

Please note that if to be placed after a printer, you need the CAT-40G-TA.

The CAT-3-TA Heavy-Duty Label Rewinders

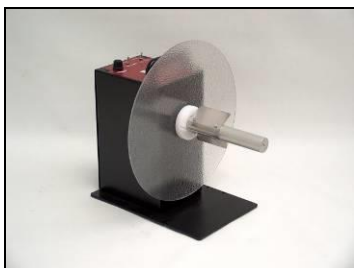
The **CAT-3-TA** is a CAT-3 with tension arm specially engineered for applications that require fixed web tension. The TA is available for all models of CAT-3.

All CAT-3-TA's are supplied with a Heavy-Duty Power Supply.

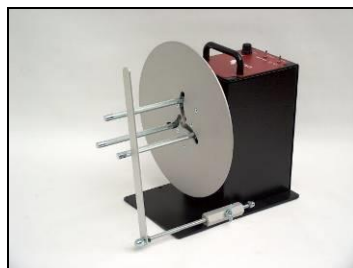
IMPORTANT NOTE: The CAT-3-TA can be also be used as a regular CAT-3 with the same features.

Rugged, heavy-gauge steel construction allows your **CAT-3 / CAT-3-TA** Rewinder to be simply set in place. Special anti-slip feet keep the unit from moving.

Reliable, high quality and maintenance-free, the Heavy-Duty **CAT-3 / CAT-3-TA** Label Rewinders feature a **5-Year Parts and Labour Limited Warranty** (1-Year on power supplies), the longest in the industry.



CAT-3-STANDARD



CAT-3-ACH with APG-CAT



CAT-3-TA-CHUCK

January 2015

www.labelmateeurope.com

brussels@labelmate.com

P/N	MODEL	DESCRIPTION	LABEL WIDTH (mm)	ROLL DIAM (mm)	SPEED * (cm/sec)	PRICE EURO
LMR004	CAT-3-STANDARD	The 'Industry Standard' Heavy-duty Label Rewinder. 76mm standard.* Size: W x D x H: 300 x 350 x 320 mm.	155	300	125	
LMR005	CAT-3-ACH	CAT-3 with an Adjustable Core Holder for any core size from 25 to 101mm in diameter. With inner flange. Use APG-CAT if you wish to also guide the outer edge of your label. Size: W x D x H: 280 x 310 x 365 mm.	155	280	125	
LMR006	CAT-3-CHUCK	The industry standard Heavy-duty Label Rewinder with an easy-loading 'Quick-Chuck'. Ideal for production work. 76mm standard.* Size: W x D x H: 300 x 385 x 320 mm.	170	300	125	
LMR007	CAT-3-10-INCHES	CAT-3 for labels up to 255mm wide. 76mm standard; 38, 40, 44 or 70mm on request. Size: W x D x H: 300 x 455 x 320 mm.	255	300	125	
LMR008	CAT-3-1-INCH	CAT-3 for 25.4mm diameter cores. Size: W x D x H: 220 x 350 x 280 mm.	155	220	125	
LMR009	CAT-40G	Gear motor driven. Tight rewind up to 400mm. 76mm 'Quick-Chuck' standard.* Size: W x D x H: 400 x 450 x 460 mm.	170	400	38	

LMR010	CAT-3-TA-STANDARD	Same features as CAT-3-STANDARD but with Tension Arm.	155	300	125	
LMR011	CAT-3-TA-ACH	Same features as CAT-3-ACH but with Tension Arm.	155	280	125	
LMR012	CAT-3-TA-CHUCK	Same features as CAT-3-CHUCK but with Tension Arm.	170	300	125	
LMR013	CAT-3-TA-10-INCHES	Same features as CAT-3-10-INCHES but with Tension Arm.	255	300	125	
LMR014	CAT-3-TA-1-INCH	Same features as CAT-3-1-INCH but with Tension Arm.	155	220	125	
LMR015	CAT-40G-TA	Same features as CAT-40G but with Tension Arm.	170	400	38	

* The **CAT-3-CHUCK, Standard, CAT-40 and 10-Inches** are available for 38-, 40-, 44-, 70-, 76- and 100 mm diameter cores.

* **SPEED:** The indicated speeds are the maximum speeds at beginning of a 76mm core roll.

NOTE: A Second flange is included with all models except ACH and CHUCKS.

MAXIMUM LABEL ROLL WEIGHT:

STANDARD: 8Kg.

ACH: 7Kg.

10-INCHES: 10Kg.

CHUCK: 8Kg

CAT-40G: 14Kg.

January 2015

www.labelmateeurope.com

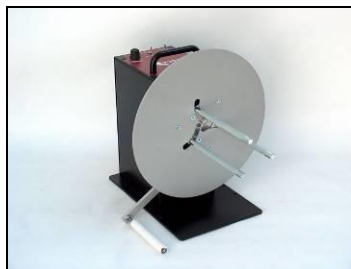
brussels@labelmate.com

LABEL REWINDERS CAT-3 / CAT-3-TA OPTIONS

P/N	MODEL	DESCRIPTION	LABEL WIDTH (mm)	PRICE EURO
LMX444	APG-CAT / UCAT	Optional Adjustable Paper Guide For CAT-3(-TA)-ACH or CAT-3(-TA)-CHUCK. Guides the outer edge of the label web to ensure an even roll edge.	-	
LMX489	FLANGE-CAT-INT	Internal flange for CAT-3-STANDARD and CAT-3-10-INCHES (also for TA models). Diam. 300 mm.	-	
LMX490	FLANGE-CAT-EXT	Internal flange for CAT-3-STANDARD and CAT-3-10-INCHES (also for TA models). Diam. 300 mm.	-	
LMX491	STANDARD SHAFT	Standard shaft for CAT-3 with vanes, internal and external flanges.	155	
LMX492	10" SHAFT	10-Inches shaft for CAT-3 (-TA) with vanes, internal and external flanges.	255	
LMX493	VANES 38	Set of 3 vanes (fins) for 38 mm cores.	-	
LMX494	VANES 40	Set of 3 vanes (fins) for 40 mm cores.	-	
LMX495	VANES 44	Set of 3 vanes (fins) for 44 mm cores.	-	
LMX496	VANES 50	Set of 3 vanes (fins) for 50 mm cores.	-	
LMX497	VANES 70	Set of 3 vanes (fins) for 70 mm cores.	-	
LMX498	VANES 76	Set of 3 vanes (fins) for 76 mm cores.	-	
LMX499	VANES 100	Set of 3 vanes (fins) for 100 mm cores.	-	
LMX500	ACH-CAT	Adjustable Core Holder for any core size from 25 to 101mm in diameter. With inner flange.	155	
LMX501	BAIL STD	For rewind on shaft, no core is needed.	-	
LMX502	BAIL 10"	For rewind on shaft on CAT-3-10-INCHES, no core is needed.	-	
LMX503	LTO	Low Torque Option. For tension sensitive printers. Factory installed.	-	
LMX472	FOOT SWITCH	Foot Switch to start and stop the TWIN-CAT-2, CAT-3 or MC Rewinders.	-	
LMX054	PS-11V	230V - 50Hz AC Power Supply for CAT-3 and UCAT-3. Output: 11V - 2.5A. Included with CAT-3 Rewinder & UCAT-3 Unwinders.	-	
LMX504	PS-15V	230V - 50Hz AC Heavy-Duty Power Supply. Output: 15V DC - 4.6A. Included with CAT-3-TA Rewinder.	-	
LMX505	PS-24V	Power supply for CAT-40G, S-100SP and RRC. 230V - 50Hz AC Heavy-Duty Power Supply. Output: 24V DC - 4.17A. Output: 24V - 4.17A. Included with CAT-40G and CAT-40G-TA Rewinders. <i>Only for models with external power supply.</i>	-	



CAT-3-10-INCHES



CAT-3-TA-ACH



CAT-40G-TA

January 2015

www.labelmateeurope.com brussels@labelmate.com

Low-Cost “Mini-CAT” Label Rewinders

The MINI-CAT (MC) Label Rewinders are the world’s most popular low-price Label Rewinders. They are capable of rewinding label rolls up to 125mm wide (115 mm for MC-11), up to 220 mm in diameter at speeds up to 50 cm/sec.

The **MC-10** has a 76 mm diameter vane style core holder. You can also use the included “coreless rewind” feature to rewind directly on-shaft.

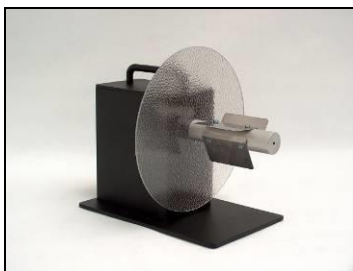
The **MC-11** includes a precision-crafted Adjustable Core Holder that adjusts in seconds to accept any core diameter from 25- to 101-mm.

Both MINI-CATs use LABELMATE’s proprietary Constant Adjustable Torque™ (“CAT”) technology to achieve impressive, reliable performance at an unprecedented low price. A special motor, designed specifically for the MINI-CATs, offers bi-directional operation and trouble-free performance. A switch, on the power supply, conveniently controls the amount of rewind force. No awkward, troublesome belts or clutches are used and no speed adjustments are required.

The MINI-CAT automatically adjusts to any printer speed up to 50cm/sec and even allows label back-feeding automatically, if your printer requires it.

The MINI-CATs have an inner label flange to keep the edge of the label web aligned as the labels are being rewound. Also available is an optional Adjustable Paper Guide (APG-MC) that mounts directly to the MC-10 or MC-11 base plate and guides the outer edge of the labels. For the MC-10, an optional plastic Outer Flange (2ndFlange MC-10) is also available.

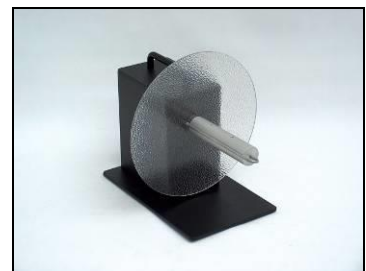
Rugged steel construction allows your MINI-CAT to simply be set in place near your label printer. Special anti-slip feet keep the unit from moving. Put a LABELMATE MINI-CAT to work for you today and enjoy a new dimension in label rewinding convenience and reliability. The MINI-CAT features a **5-Year Parts and Labour Limited Warranty**, the longest in the industry (1-year on power supply).



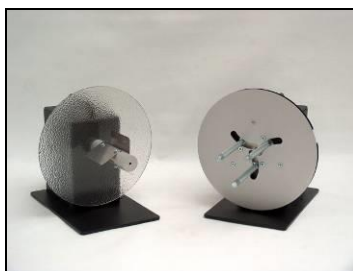
MC-10



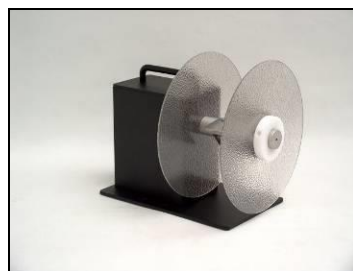
MC-11



MC-10 with Bail



MC-10 & MC-11



MC-10 with 2nd flange



MC-11 with APG-MC

January 2015

www.labelmateeurope.com

brussels@labelmate.com

Note: All Rewinders can be used as Unwinders

P/N	MODEL	DESCRIPTION	LABEL WIDTH (mm)	ROLL DIAM (mm)	SPEED * (cm/sec)	PRICE EURO
LMR001	MC-10	Quality, low-cost Rewinder & Unwinder, coreless or 76mm standard. 38, 40, 44, 50, 70 or 100mm core rewinding on request. Bi-directional with multiple rewind force settings. Size: W x D x H: 220 x 305 x 195 mm.	125	220	50	
LMR002	MC-10-1-INCH	Same as above but with a 25,4mm core.	125	220	50	
LMR003	MC-11	Same as MINI-CAT-10 but with continuously Adjustable Core Holder for 25 to 101mm diameter cores. Size: W x D x H: 220 x 305 x 195 mm.	115	220	50	

* SPEED: The indicated speeds are the maximum speeds at beginning of a 76mm core roll.

MAXIMUM LABEL ROLL WEIGHT: 4Kg.

LABEL REWINDERS MC-10 / MC-11 OPTIONS

P/N	MODEL	DESCRIPTION	PRICE EURO
LMX441	APG-MC	Adjustable Paper Guide for MC-11. Guides outer edge of label to ensure an even roll edge.	
LMX440	EXT. FLANGE MC-10	External flange, for MC-10 only. Diam. 220 mm.	
LMX442	STANDARD SHAFT MC	Standard shaft for MC with vanes, bail and internal flange.	
LMX493	VANES 38	Set of 3 vanes (fins) for 38 mm cores.	
LMX494	VANES 40	Set of 3 vanes (fins) for 40 mm cores.	
LMX495	VANES 44	Set of 3 vanes (fins) for 44 mm cores.	
LMX496	VANES 50	Set of 3 vanes (fins) for 50 mm cores.	
LMX497	VANES 70	Set of 3 vanes (fins) for 70 mm cores.	
LMX798	VANES 76	Set of 3 vanes (fins) for 76 mm cores.	
LMX499	VANES 100	Set of 3 vanes (fins) for 100 mm cores.	
LMX443	ACH-MC	Adjustable Core Holder for any core size from 25 to 101mm in diameter. With inner flange.	
LMX162	BAIL MC	Standard on MC-10. For rewind on shaft, no core is needed.	
LMX503	LTO	Low Torque Option. For tension sensitive printers. (Inkjet). Factory installed.	
LMX472	FOOT SWITCH	Foot Switch to start and stop the MC Rewinders. MC to be modified at factory.	
LMX060	PS-MC	230V - 50Hz Power Supply for MC-10 and MC-11. Included with Rewinder.	
LMX061	PS-MC-UK	120V - 60Hz Power Supply for MC-10 and MC-11.	

January 2015

www.labelmateeurope.com brussels@labelmate.com

"TWIN-CAT-2" Dual Spindle Unwind / Rewind Stations

LABELMATE's Dual-Spindle Heavy Duty Unwinder / Rewinder, the TWIN-CAT-2 has two powerful motors and your choice of core holders. You therefore have maximum versatility in setting up the operation you need. Both spindles can rewind and unwind. You control the direction and torque on each spindle independently. An External Halt Control allows you to STOP and START the TWIN-CAT-2 with a foot switch or other external device if desired. A worldwide universal switching power supply is included for extra power.

Here are some of the many possible applications:

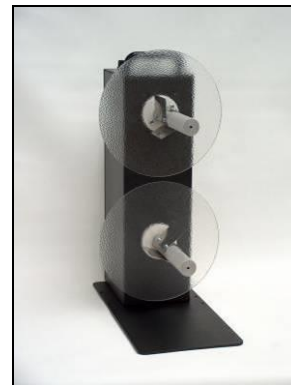
- Unwind and Rewind labels on one machine. Ideal for "wind-in / wind-out" operations.
- Reverse the order of serialized labels on a roll.
- Conveniently rewind labels onto a different core size. With universal Adjustable Core Holders you can unwind from any diameter core and rewind onto any diameter core within the range of 25 to 101 mm in diameter! Great for production shops with varied jobs.
- Add the Label Inspection option to create a stand-alone Inspection Station. You can also add a Label Counter if you need one.
- Wind small rolls of labels from larger ones.
- Conveniently strip the unwanted matrix from die-cut labels for easy disposal as you rewind them in-line with your printer or off-line.

LABELMATE's Unwind / Rewind Stations are available in many different configurations to fit perfectly into your label production. All TWIN-CAT-2 Models operate at up to 125 cm per second.

The TWIN-CAT features a **5-Year Parts and Labour Limited Warranty** (1-Year on power supplies), the longest in the industry.



TWIN-CAT-2 ACH



TWIN-CAT-2 STANDARD

P/N	MODEL	DESCRIPTION	ROLL DIAM (mm)	SPEED * (cm/sec)	PRICE EURO
LMR016	TWIN-CAT-2 (BASE UNIT)	TWIN-CAT-2 base unit without any core holder. Size: W x D x H: 180 x 370 x 470 mm.	220	125	

P/N	CORE HOLDERS ADD 2 FROM THE LIST (MIX OR MATCH)	CORE DIAMETER	LABEL WIDTH (mm)	NUMBER OF FLANGES	PRICE EURO
LMX460	1-INCH	25,4 mm (1") standard shaft and flanges.	155	2	
LMX461	STANDARD	Standard shaft with vanes and flanges. Specify 38, 40, 44, 70, 76 or 100 mm.	155	2	
LMX462	10-INCHES	Standard shaft with vanes in 255 mm length and flanges. Specify 38, 40, 44, 70, 76 or 100 mm.	255	2	
LMX463	ACH-TWIN (No Mix*)	Adjustable core holder shaft for cores from 25 to 101 mm. <i>*The ACH-TWIN core holder can not be mixed with another type.</i>	155	1	
LMX464	CHUCK – C-xx*170	Quick-Chuck shaft in 170 mm length and inner flange. Specify 38, 40, 44, 70, 76 or 100 mm.	170	1	
LMX465	CHUCK – C-76220	Quick-Chuck shaft in 76 mm core diameter and 220 mm length and inner flange.	220	1	
LMX466	CHUCK – C-76270	Quick-Chuck shaft in 76 mm core diameter and 270 mm length and flanges.	270	1	
LMX467	CHUCK – C-100170	Quick-Chuck shaft in 100 mm core diameter and 170 mm length and inner flange.	170	1	
LMX468	CHUCK – C-100220	Quick-Chuck shaft in 100 mm core diameter and 220 mm length and inner flange.	220	1	
LMX469	CHUCK – C-100270	Quick-Chuck shaft in 100 mm core diameter and 270 mm length and inner flange.	270	1	

MAXIMUM LABEL ROLL WEIGHT: 2 x 5 Kg.

How to Specify Your TWIN-CAT-2 Stand-alone Unwind / Rewind Station – Refer to the above.

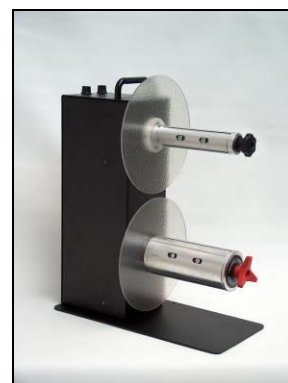
“TWIN-CAT-2, [*specify Core Holder*] Upper Spindle, [*specify Core Holder*] Lower Spindle.”

Add prices of the two selected core holders to the Base Price of 975.

Add Inspection and / or Counter Options if desired. Please see the table next page.



TWIN-CAT-2 Standard / C-76170



TWIN-CAT-2 C-40170 / C-76170

January 2015

www.labelmateeurope.com

brussels@labelmate.com

TWIN-CAT-2 LABEL INSPECTION AND COUNTER OPTIONS

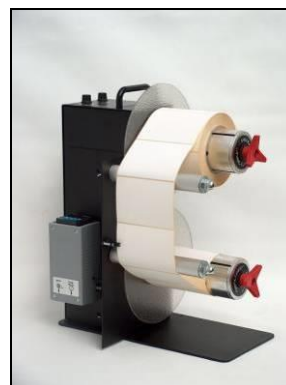
The Label Inspection option, **INSP-1**, adds a handy Label Inspection Fixture to the side of your **TWIN-CAT-2**. It has two rollers over which your labels run as they are presented for inspection. You can also wind-in or wind-out at the same time as you perform the inspection operation. If you want to, when inspection is complete, you can conveniently rewind the labels back onto their original core one the same machine by just reversing the direction of the Rewind Spindles.

You can also order a **PC-1** Label Counter for your inspection station. This will count the labels as they pass by a sensor mounted on the Inspection Fixture. The **PC-1** counts single- or multi-across labels and you can preset a batch size. Counts up. Includes a Halt Control Cable to optionally stop your **TWIN-CAT-2** automatically when your job is finished.

P/N	MODEL	DESCRIPTION	PRICE EURO
LMX470	INSP-1	Inspection Fixture mounts in minutes on the side of your TWIN-CAT-2. Includes two rollers that your labels glide over as they are presented for inspection. Bi-directional, variable speed operation allows control over winding tightness as well. Can be started and stopped with the optional Foot Switch listed below.	
LMX471	INSP-1 +PC-1	Optional Preset Counter with adjustable counter sensitivity. Conveniently pre-mounted on the INSP-1 Inspection Fixture ready to plug in and use.	
LMX472	FOOT SWITCH	Foot Switch to start and stop the TWIN-CAT-2.	
LMX473	OUTER FLANGE TWIN QC76	220 mm outer flange for "Quick-Chuck" 76 mm core diameter.	
LMX504	PS-15V	230V – 50Hz DC Heavy-Duty Power Supply. Output: 15V – 4.6A. <i>Included with TWIN-CAT-2.</i>	

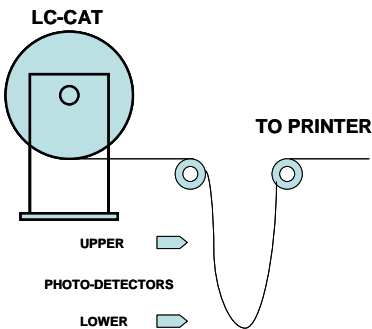


TWIN-CAT-2 with INSP-1 & PC-1



TWIN-CAT-2 C-76170 / C-76170 with INSP-1 & PC-1

“LC-CAT” Paper Loop Controlled Label Rewinders / Unwinders



The LC-CATs, are controlled using two photo-detectors positioned along the paper loop formed between the Rewinder / Unwinder and the printer.

This approach reduces the paper resistance to the printer to almost zero and offers a far greater reliability than tension-arm systems.

All models use 2 visible light photo-detectors that connect to the rear panel of the machine. The cables are 2 meters long. The detection range is adjustable from 20 to 400mm.

LC-CAT-3

The LC-CAT-3 will accept rolls up to a 300 mm diameter. The weight of the rolls accepted by the LC-CAT-3 depends on the chosen core holder.

The model shown here is the LC-CAT-3-CHUCK. All other LABELMATE Standard and ACH core holders can be used.

LC-CAT-40G

The LC-CAT-40G is using a gear motor and will accept rolls up to 400 mm diameter. Because of the roll size accepted, the LC-CAT-40G is only available with the LABELMATE's durable "Quick-Chuck"™ quick-locking Core Chuck, permitting the fastest loading and unloading of cores and label rolls.

The LC-CAT-40G is available for 38-, 40-, 44-, 70, 76- and 100 mm cores.

Torque and Direction are fully controllable from the Control Panel. All models are bi-directional. All LC-CATs are supplied with the adequate power supply.

Rugged, heavy-gauge steel construction allows your LC-CATs Unwinders to be simply set in place. Special anti-slip feet keep the unit from moving. Reliable, high quality and maintenance-free, the LC-CATs Unwinders feature a **5-Year Parts and Labor Limited Warranty** (1-Year on power supplies), the longest in the industry.



LC-CAT-3-CHUCK



LC-CAT-40G

January 2015

www.labelmateeurope.com

brussels@labelmate.com

P/N	MODEL	DESCRIPTION	LABEL WIDTH (mm)	ROLL DIAM (mm)	SPEED * (cm/sec)	PRICE EURO
LMR017	LC-CAT-3-STANDARD	Equipped with a Standard Core Holder. Various sizes available, 76mm standard.* Size: W x D x H: 300 x 350 x 320 mm.	155	300	125	
LMR018	LC-CAT-3-ACH	LC-CAT-3 with an Adjustable Core Holder for any core size from 25 to 101mm in diameter. With inner flange. Use APG-CAT if you wish to also guide the outer edge of your label. Size: W x D x H: 300 x 350 x 320 mm.	155	280	125	
LMR019	LC-CAT-3-CHUCK	Equipped with an easy-loading 'Quick-Chuck'. Ideal for production work. 76mm standard.* Size: W x D x H: 300 x 385 x 320 mm.	170	300	125	
LMR020	LC-CAT-3-10-INCHES	LC-CAT-3 for labels up to 255mm wide. 76mm standard; 38, 40, 44 or 70mm on request. Size: W x D x H: 300 x 455 x 320 mm.	255	300	125	
LMR021	LC-CAT-3-1-INCH	LC-CAT-3 for 25.4mm diameter cores. Size: W x D x H: 300 x 455 x 320 mm.	155	220	125	
LMR022	LC-CAT-40G	Gear motor driven. Rolls up to 400mm. 76mm 'Quick-Chuck' standard.* Size: W x D x H: 400 x 450 x 460 mm.	170	400	38	

* The **LC-CATs** are available for 38-, 40-, 44-, 70-, 76- and 100 mm diameter cores. Specify when ordering.

* **SPEED:** The indicated speeds are the maximum speeds at beginning of a 76mm core roll.

MAXIMUM LABEL ROLL WEIGHT:

- STANDARD: 8Kg.**
- ACH: 7Kg.**
- 10-INCHES: 10Kg.**
- CHUCK: 8Kg.**
- LC-CAT-40G: 14Kg.**

LC-CAT-3 OPTIONS

P/N	MODEL	DESCRIPTION	PRICE EURO
LMX444	APG-CAT	Optional Adjustable Paper Guide for LC-CAT-3-ACH. Guides the outer edge of the label web to ensure an even roll edge.	
LMX504	PS-15V	230V – 50Hz AC Heavy-Duty Power Supply. Output: 15V DC – 4.6A. <i>Included with LC-CAT-3 Rewinder.</i>	
LMX505	PS-24V	230V – 50Hz AC Heavy-Duty Power Supply. Output: 24V DC – 4.17A. <i>Included with LC-CAT-40G. Only for models with external power supply.</i>	

NEW "CAT-3-LC" Paper Loop Controlled Label Rewinders / Unwinders with Adjustable Tension

A "loop" of label stock is created between the two horizontal support rods. A photo-detector observes when the loop is no longer at optimum length and turns the rewinding action on or off. The loop length is simply adjustable by the position of the photo-detector beam.

The CAT-3-LC can easily be turned into an Unwinder by a switch direction. The paper loop allows the CAT-3-LC to feed the printer without any undue tension.

The only tension on the label web is determined by the free roller. Its weight can be changed without difficulty by the user, to ensure a tight rewind roll.

The CAT-3-LC uses the reliable gear motor used in the CAT-40G as well as a special chassis-mounted photo-detector to start and stop the rewinding action.

The CAT-3-LC is standard delivered with a 76-170mm LABELMATE's durable Quick-Chuck™ and an external flange. Other "Quick-Chuck" sizes are available on demand.

Torque and Direction are fully controllable from the Control Panel. All models are bi-directional.

CAT-3-LC-D300

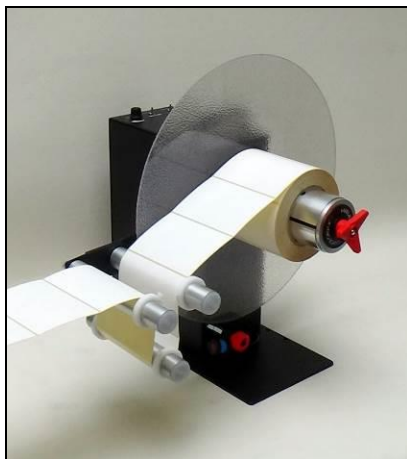
The CAT-3-LC-D300 will accept rolls up to a 300 mm diameter.

CAT-3-LC-D400

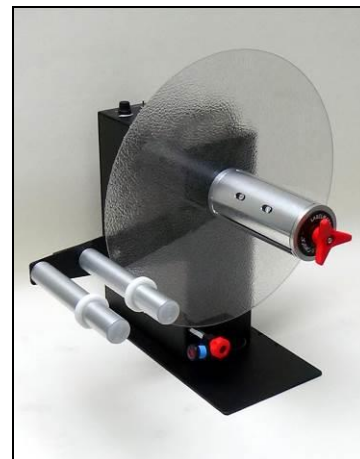
Such as the CAT-3-LC-D300, the CAT-3-LC-D400 is delivered with a 76-170mm LABELMATE's durable "Quick-Chuck™ quick-locking Core Chuck, permitting the fastest loading and unloading of cores and label rolls.

The CAT-3-LC-D400 accepts rolls up to 400mm diameter. The CAT-3-LC-D400 is available for 38-, 40-, 44-, 70-, 76- and 100 mm cores.

Rugged, heavy-gauge steel construction allows your CAT-3-LC Rewinder / Unwinder to be simply set in place. Special anti-slip feet keep the unit from moving. Reliable, high quality and maintenance-free, the CAT-3-LCs feature a [**5-Year Parts and Labor Limited Warranty**](#) (1-Year on power supplies), the longest in the industry.



CAT-3-LC-D400



CAT-3-LC-D400

January 2015

www.labelmateeurope.com

brussels@labelmate.com

P/N	MODEL	DESCRIPTION	LABEL WIDTH (mm)	ROLL DIAM (mm)	SPEED * (cm/sec)	PRICE EURO
LMR023	CAT-3-LC-D300	Label Rewinder / Unwinder with chassis-mounted detector and a gear motor. Weighted roller with guide rings included. Standard equipped with a 76mm Quick-Chuck. Other "Quick-Chuck" sizes available on demand. W x D x H: 450 x 450 x 460 mm	170	300	38	
LMR024	CAT-3-LC-D400	Same as above, but in a 400mm version. Standard equipped with a 76mm Quick-Chuck. Other "Quick-Chuck" sizes available on demand. W x D x H: 500 x 450 x 460 mm	170	400	38	

* **SPEED:** The indicated speeds are the maximum speeds at beginning of a 76mm core roll.

MAXIMUM LABEL ROLL WEIGHT:

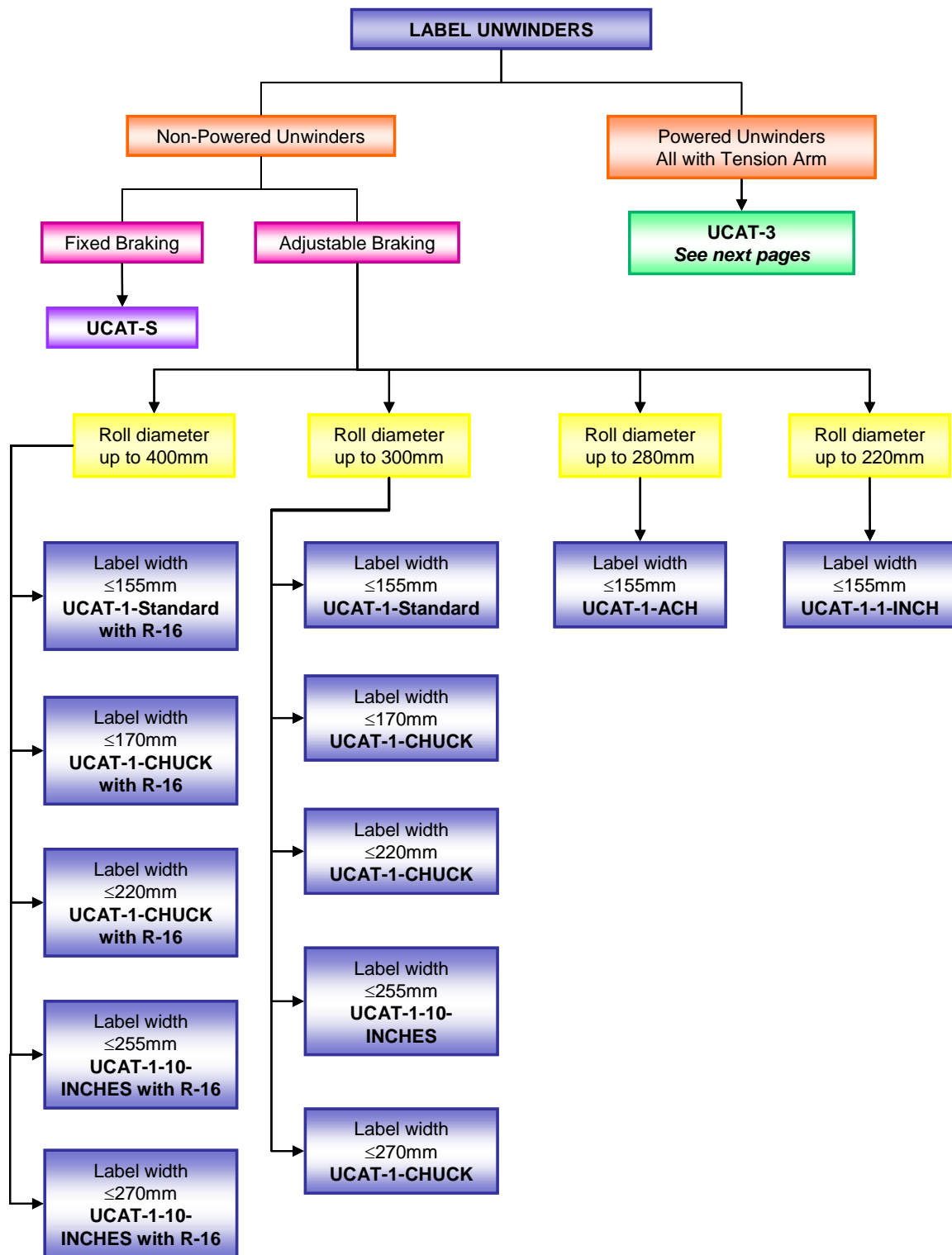
CAT-3-LC-D300: 10Kg.

CAT-3-LC-D400: 14Kg.

Shipping Weight: Approx. 15Kg.

Power: 220/240-vac 50-Hz. 120-vac 60-Hz power supply is also available.

Choosing the right Unwinder



OTHER IMPORTANT INFORMATION:

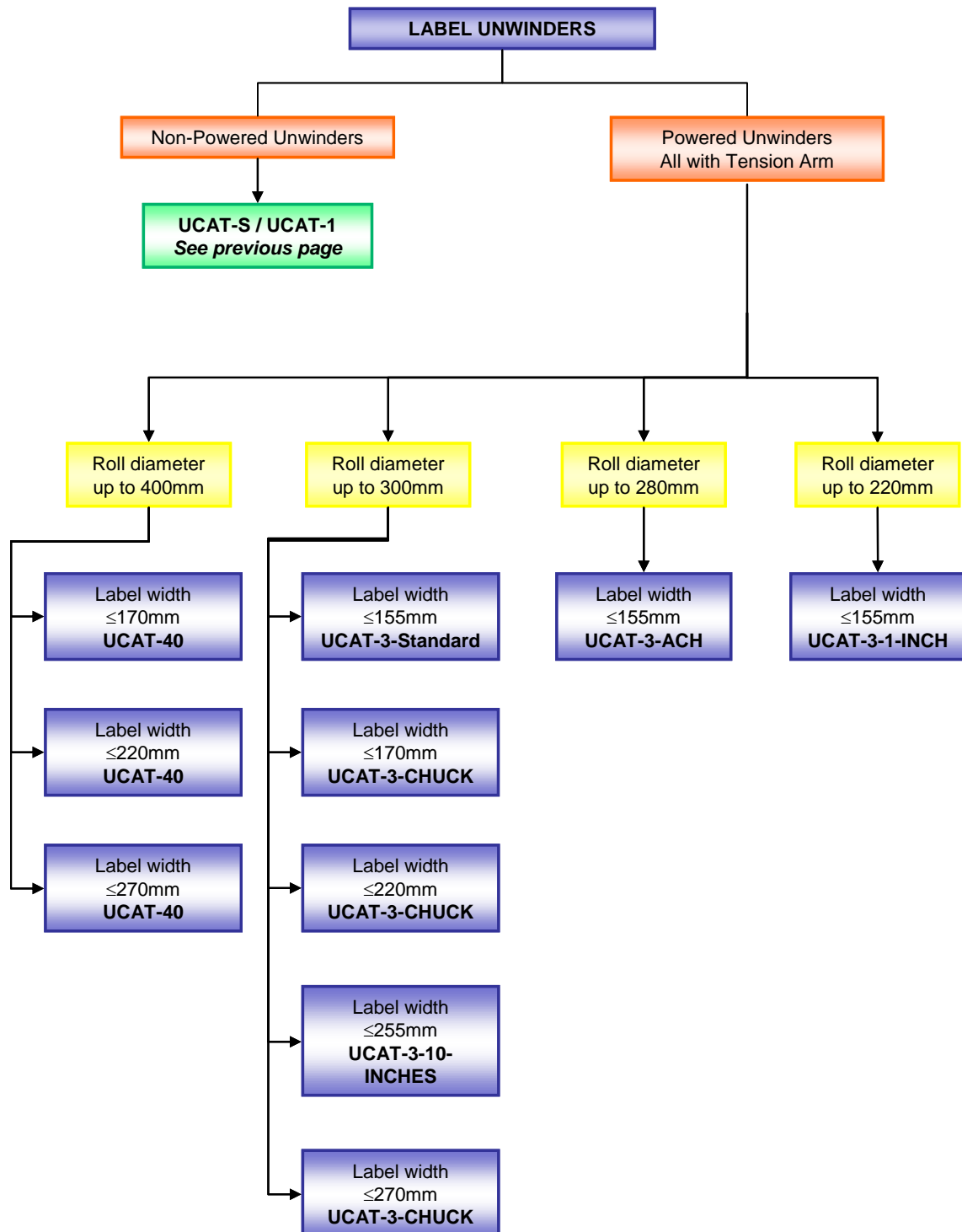
1. The **UCAT-1-ACH** has an Adjustable Core Holder that accepts all core sizes from 25 to 101mm.
2. The **UCAT-3-Standard**, **UCAT-1-10-INCHES** and **UCAT-1-CHUCK** are available in various core sizes.
3. The **UCAT-1-1-INCH** is used for core diameter of 1" (25,4mm).

January 2015

www.labelmateeurope.com

brussels@labelmate.com

Choosing the right Unwinder (Cont.)



OTHER IMPORTANT INFORMATION:

1. The **UCAT-3-ACH** has an Adjustable Core Holder that accepts all core sizes from 25 to 101mm.
2. The Quick-Chuck used on the **UCAT-40** and **UCAT-3-CHUCK** is available in 3 different lengths: 170, 220 and 270mm.
3. The **UCAT-3-Standard**, **UCAT-3-10-INCHES** and **UCAT-3-CHUCK** are available in various core sizes.
4. The **UCAT-3-1-INCH** is used for core diameter of 1" (25,4mm).

“UCAT” Heavy-Duty Label Unwinders

UCAT-S Heavy-Duty Unpowered Label Unwinders

This is the world's least expensive professional Unwinder. It is unpowered and it now has an adjustable "wearless" brake. The UCAT-S accepts up to 300 mm diameter rolls and up to 155 mm width, 76mm core holder as standard.

UCAT-1 Heavy-Duty Unpowered Label Unwinders

This is the classic LABELMATE Unwinder with Adjustable Speed-Proportional Braking. Up to 300 mm diameter rolls and 155 mm width, 76 mm cores. A 255 mm width and a 25 mm to 101 mm Adjustable Core Holder, models are available. Please see the table of available models next page.

UCAT-3 Heavy-Duty Powered Label Unwinders

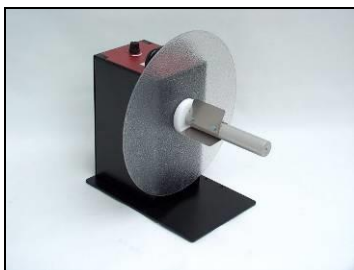
This powered Unwinder automatically tracks label usage and provides powered label feed at speeds up to 125 cm/sec. The UCAT-3 accepts standard 76 mm cores and rolls up to 300 mm in diameter. 255 mm width is available. It can also be used as a full-featured Label Rewinder without any special setup. LABELMATE's renowned Constant Adjustable Torque™ control system allows precise adjustment of feed speeds and rewind torque. External STOP / RUN Input included.

UCAT-40 Heavy-Duty Powered Label Unwinders

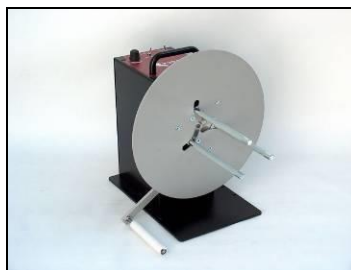
A powered Unwinder like the UCAT-3, but with an impressive 40 cm roll diameter capacity. Supplied with LABELMATE's 76 mm "Quick-Chuck"™, the UCAT-40 gives you the ultimate label Unwinder for volume production.

NOTE: UCAT-S & UCAT-1 are unpowered and do not rewind, they only unwind. The UCAT-3 & UCAT-40 are powered and can also rewind (without the tension arm function).

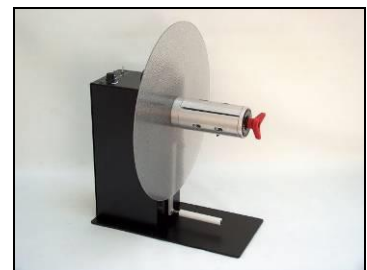
All UCAT feature a **5-Year Parts and Labour Limited Warranty** (1-Year on power supplies), the longest in the



UCAT-1-Standard



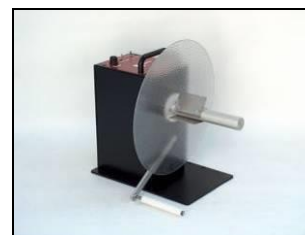
UCAT-3-ACH



UCAT-40



UCAT-3-CHUCK



UCAT-3-STANDARD

January 2015

www.labelmateeurope.com

brussels@labelmate.com

P/N	MODEL	DESCRIPTION	LABEL WIDTH (mm)	ROLL DIAM (mm)	SPEED * (cm/sec)	PRICE EURO
LMU001	UCAT-S	Economy Label Unwinder. Unpowered with adjustable brake. 76mm standard. * Size: W x D x H: 300 x 365 x 320 mm.	155	300	Same as printer	
LMU002	UCAT-1-STANDARD	Heavy-duty Unwinder 76mm standard.* Self-powered adjustable Speed-Proportional Frictionless Braking. Size: W x D x H: 300 x 350 x 320 mm.	155	300	Same as printer	
LMU003	UCAT-1-ACH	UCAT-1 with an Adjustable Core Holder for core sizes from 25 to 101mm diameter cores. Size: W x D x H: 300 x 350 x 320 mm.	155	280	Same as printer	
LMU004	UCAT-1-CHUCK	UCAT-1 with 76mm 'Quick-Chuck'. * Size: W x D x H: 300 x 385 x 320 mm.	170	300	Same as printer	
LMU005	UCAT-1-10-INCHES	UCAT-1 for Labels up to 255mm wide. 76mm standard. * Size: W x D x H: 300 x 455 x 320 mm.	255	300	Same as printer	
LMR006	UCAT-1-1-INCH	UCAT-1 for 25.4mm diameter cores. Size: W x D x H: 300 x 455 x 320 mm.	155	220	Same as printer	

LMU007	UCAT-3-STANDARD	Powered Unwinder for label rolls with 76mm core diameter standard.* Continuously adjustable feed rate. Control arm tracks label unwind usage and starts & stops unwinding automatically. Also rewinds. Size: W x D x H: 300 x 350 x 320 mm.	155	300	125	
LMU008	UCAT-3-ACH	Powered Unwinder with an Adjustable Core Holder for any core size from 25 to 101mm. Also rewinds. Size: W x D x H: 300 x 350 x 320 mm.	155	280	125	
LMU009	UCAT-3-CHUCK	UCAT-3 with 76mm 'Quick-Chuck'. * Also rewinds. Size: W x D x H: 300 x 385 x 320 mm.	170	300	125	
LMU010	UCAT-3-10-INCHES	UCAT-3 for Labels up to 255mm wide. 76mm standard. * Also rewinds. Size: W x D x H: 300 x 455 x 320 mm.	255	300	125	
LMU011	UCAT-3-1-INCH	UCAT-3 for 25.4mm diameter cores. Size: W x D x H: 300 x 455 x 320 mm.	155	220	125	
LMU012	UCAT-40	Heavy-duty 400mm diameter Powered Unwinder with 76mm 'Quick-Chuck'. * Continuously adjustable feed rate. Control arm tracks label usage and starts & stops unwinding automatically. Also rewinds. Size: W x D x H: 400 x 450 x 460 mm.	170	400	125	

* **Standard, S, CHUCK and 10-Inches** Models are available for 38-, 40-, 44-, 70-, 76- and 100 mm diameter cores.
Specify when ordering.

* **SPEED:** The indicated speeds are the maximum speeds at beginning of a 76mm core roll.

MAXIMUM LABEL ROLL WEIGHT:

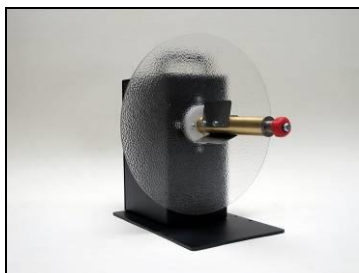
STANDARD: 8Kg. - 10-INCHES: 10Kg. - ACH: 7Kg. - CHUCK: 8Kg. - UCAT-40: 14Kg

January 2015

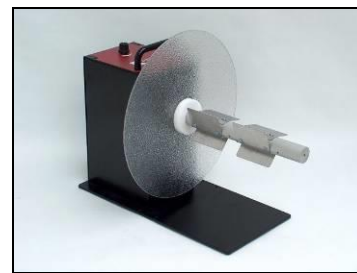
www.labelmateeurope.com brussels@labelmate.com

LABEL UNWINDERS UCAT-1 / UCAT-3 OPTIONS

P/N	MODEL	DESCRIPTION	LABEL WIDTH (mm)	PRICE EURO
LMX457	R-16	Option available on UCAT-1-STANDARD, UCAT-1-CHUCK and UCAT-S to accept rolls up to 400mm in diameter . Factory installed.	-	
LMX444	APG-CAT / UCAT	Optional Adjustable Paper Guide. Guides the outer edge of the label web to ensure an even roll edge.	-	
LMX489	FLANGE-CAT-INT	Inner flange for UCAT-3-STANDARD and UCAT-3-10-INCHES.	-	
LMX490	FLANGE-CAT-EXT	Outer flange for UCAT-3-STANDARD and UCAT-3-10-INCHES.	-	
LMX491	STANDARD SHAFT	Standard shaft for CAT-3 with vanes, internal and external flanges.	155	
LMX492	10" SHAFT	10-Inches shaft for UCAT-1 & 3 with vanes, internal and external flanges.	255	
LMX493	VANES 38	Set of 3 vanes (fins) for 38 mm cores.	-	
LMX494	VANES 40	Set of 3 vanes (fins) for 40 mm cores.	-	
LMX495	VANES 44	Set of 3 vanes (fins) for 44 mm cores.	-	
LMX496	VANES 50	Set of 3 vanes (fins) for 50 mm cores.	-	
LMX497	VANES 70	Set of 3 vanes (fins) for 70 mm cores.	-	
LMX498	VANES 76	Set of 3 vanes (fins) for 76 mm cores.	-	
LMX499	VANES 100	Set of 3 vanes (fins) for 100 mm cores.	-	
LMX500	ACH-UCAT	Adjustable Core Holder for any core size from 25 to 101mm in diameter. With inner flange.	155	
LMX501	BAIL STD	For rewind on shaft, no core is needed.	-	
LMX502	BAIL 10"	For rewind on shaft on CAT-1/3-10-INCHES, no core is needed.	-	
LMX472	FOOT SWITCH	Foot Switch to start and stop the TWIN-CAT-2, CAT-3 or MC Rewinders.	-	
LMX054	PS-11V	230V - 50Hz AC Power Supply for CAT-3 and UCAT-3. Output: 11V - 2.5A. Included with CAT-3 Rewinder & UCAT-3 Unwinders.	-	



UCAT-S



UCAT-1-10-INCHES

January 2015

www.labelmateeurope.com

brussels@labelmate.com

“QUICK-CHUCKS”™ Quick-Loading Core Chucks for Volume Label Production

Here is the best answer for quick loading and unloading of label rolls. LABELMATE’s precision, maintenance-free “Quick-Chuck”™ Core Chucks permit you to mount or remove a roll of labels on your Rewinder or Unwinder in seconds. They are ideal for heavy rolls, production operations, or for holding multiple cores for slitting. Quality European design and construction insure smooth and trouble-free operation.

To use a *Quick-Chuck*, just slide your label roll over the Chuck and turn the convenient lock knob. Instantly your roll is locked in place. To remove the roll, just give the lock knob a quick turn to the left and pull the roll off your machine!

LABELMATE’s *Quick-Chucks* are now available in six different diameters to accept popular core sizes. An optional Outer Flange is available for the 76 mm (3-inch) “Quick-Chuck” Models. An Adjustable Paper Guide (APG-CAT) can also be used to guide the outer edge of the label web.

The UCAT-1-CHUCK, UCAT-3-CHUCK, UCAT-40 and LC-CAT-3-CHUCK Unwinders and the CAT-3-CHUCK, TWIN-CAT-2, CAT-40G, CAT-2-TA-CHUCK & CAT-40G-TA Rewinders come equipped with a *Quick-Chuck* as standard. Or, you can buy *Quick-Chucks* individually for your in-house or OEM Applications.

The Quick-Chucks fit a 15.75mm diameter shaft.



P/N	MODEL	DIAMETER	WIDTH	ROLL WEIGHT	PRICE EURO
LMX479	C-38170	38 mm	170 mm	Maximum 12 Kg.	
LMX480	C-40170	40 mm			
LMX481	C-44170	44 mm			
LMX482	C-70170	70 mm			
LMX483	C-76170	76 mm			
LMX484	C-76220	76 mm	220 mm		
LMX485	C-76270*	76 mm	270 mm		
LMX486	C-100170	100 mm	170 mm		
LMX487	C-100220	100 mm	220 mm		
LMX488	C-100270*	100 mm	270 mm		
LMX506	220mm outer Flange for "Quick-Chuck" 76mm core diameter.				
LMX144	220mm inner Flange for "Quick-Chuck" 70, 76 & 100mm core diameter.				
LMX507	220mm inner Flange for "Quick-Chuck" 38, 40 & 44 core diameter.				
LMX508	300mm outer Flange for "Quick-Chuck" 76mm core diameter.				
LMX509	300mm inner Flange for "Quick-Chuck" 70, 76 & 100mm core diameter.				
LMX510	300mm inner Flange for "Quick-Chuck" 38, 40 & 44 core diameter.				
LMX511	400mm outer Flange for "Quick-Chuck" 76mm core diameter.				
LMX512	400mm inner Flange "Quick-Chuck" 76mm core diameter.				
LMX513	400mm inner Flange for "Quick-Chuck" 38, 40 & 44 core diameter.				

* The C-76270 and C-100270 require the use of a Heavy-Duty Power Supply (PS-15V) on the CAT-3 Rewinder.

Heavy-Duty Label Slitters & Slitting Stations

The S-100 & S-200 Label Slitters

The most convenient solution for slitting and rewinding narrow labels. LABELMATE Label Slitters allow you to print small labels several across and then slit them to the desired width. This multiplies your print efficiency and dramatically increases your print head life and ribbon usage efficiency. The rugged LABELMATE S-100 and S-200 are High-Speed, Heavy-Duty Label Slitters identical in construction except for size.

The Slitters can be used either “in-line” or “off-line”. In “in-line” use, the Slitter is placed between the printer output and the Label Rewinder. The slitting speed is determined by the printer output speed. In “off-line” use, the Slitter is placed between a UCAT Unwinder and a CAT-3 Rewinder. Off-line slitting is recommended for production work or for use with three or more blades. With slitting speeds up to 125cm/sec in “off-line” mode, you’ll make fast work of your slitting jobs.

An optional six- (6) digit PC-1 Pre-set Counter allows you to pre-set the number of labels to be slit. When the counter reaches the preset number, it sends a “HALT” signal to the Rewinder. Power to the Rewinder motor is then shut off and braking is applied. You’ll have no annoying label spills to contend with.

The S-100-SP Self-Powered Label Slitter

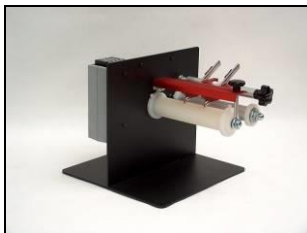
Simplifies label slitting by providing powered pinch rollers to pull the labels through the cutting blades rather than having to rely on a Label Rewinder to pull the labels. This results in a constant cutting speed and means you can use any LABELMATE Rewinder equipped with a “Quick-Chuck” to do your rewinding. Because the S-100-SP is self-powered, you can reliably use more cutting blades than on a Slitter that is powered by a Rewinder. You can add additional BH-1 Blade Holders for a total of five across the maximum label width of 175-mm. The S-100-SP is a great choice for you label needs (off-line slitting only).

The easily replaced slitting blades are click-adjustable, maximizing their useful life. Special, very sharp, ground steel blades are supplied with the S-100, S-200 and S-100-SP and are recommended for replacement.

S-100S and S-200S Slitting Stations

Complete off-line slitting stations including all elements needed to start slitting immediately. The station comprises a slitter, a rewinder, an unwinder and the accessories.

The S-100, S-200 & S-100-SP feature a **3-Year Parts and Labour Limited Warranty** (1-Year on power supplies), the longest in the industry.



S-100 with PC-1 Counter

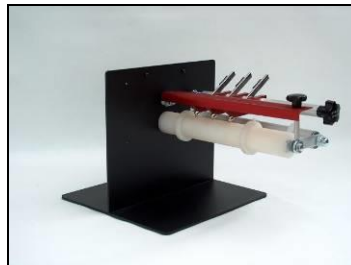


S-100-SP with PC-1

P/N	MODEL	DESCRIPTION	LABEL WIDTH (mm)	SPEED (cm/sec)	PRICE EURO
LMS001	S-100	Heavy-Duty Label Slitter. Requires a CAT-3 Rewinder. Recommended: CAT-3-CHUCK with HD-PS. Size: W x D x H: 355 x 280 x 250 mm.	170	Same as Rewinder or printer.	
LMS002	S-200	Wide Heavy-Duty Label Slitter. Requires a CAT-3 Rewinder. Recommended: CAT-3—CHUCK-10" with HD-PS. Size: W x D x H: 435 x 280 x 250 mm.	255	Same as Rewinder or printer.	
LMS003	S-100-SP	Self-powered Slitter Unit with 90-250VAC, 50-60Hz, 60VA Universal Power Supply. Size: W x D x H: 355 x 280 x 250 mm.	175	30	



S-100-SP



S-200

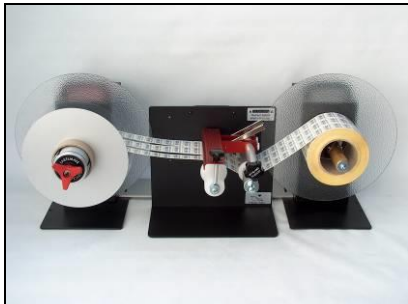


BH-1

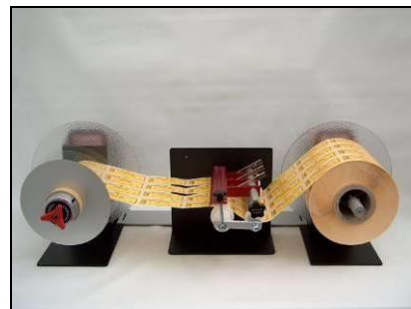
LABEL SLITTERS S-100, S-200 & S-100-SP OPTIONS

P/N	MODEL	DESCRIPTION	PRICE EURO
LMX514	PC-1	Preset counter. Counts label batch size. Stops Rewinder automatically when job is finished. Factory installed.	
LMX515	BH-1	Additional blade holder assembly. Includes precision high-speed blade.	
LMX516	HSB-10	10 precision high-speed blades for slitters.	
LMX517	LINK SLITTER	Adjustable locking bar to lock units together in position (Unwinder, Slitter & Rewinder).	

P/N	MODEL	DESCRIPTION	LABEL WIDTH (mm)	SPEED (cm/sec)	PRICE EURO
LMS004	S-100S	<ul style="list-style-type: none"> - UCAT-S Economy Heavy-Duty Label Unwinder with fixed brake; - S-100 Heavy-Duty Label Slitter; - 2 Blade Holders with Blades; - CAT-3-CHUCK Heavy-Duty Rewinder; 76mm diameter 'Quick-Chuck' is Standard; specify if 38, 40, 44 or 70mm diameter is desired instead. - 1 Aluminium and 2 Thin Plastic Separator Plates (220mm diameter); - 'LINK': Adjustable Locking Bar to lock units together in position, - 15V Power Supply. 	170	125	
LMS005	S-200S	<ul style="list-style-type: none"> - UCAT-1-10" Heavy-Duty Label Unwinder; - S-200 Heavy-Duty Label Slitter; - 3 Blade Holders with blades; - CAT-3-CHUCK-10" Heavy-Duty Rewinder; - 1 Aluminium and 3 Thin Plastic Separator Plates (220mm diameter); - 'LINK': Adjustable Locking Bar to lock units together in position; - 15V Power Supply. 	255	125	



S-100S



S-200S

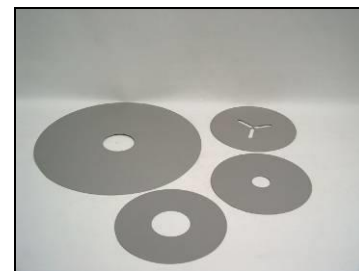
"SP" Label Separator Plates for Slitters

Keeps slit label rolls from interleaving or telescoping. Makes removal of slit rolls easy. Aluminium separator Plates are recommended for the outer Plates, Thin Plastic for the Plates in-between slit rolls. Suggested order: 1 Aluminium Separator Plate + Plastic Plates in-between slit rolls.

P/N	MODEL (mm)	DESCRIPTION	MATERIAL	PRICE EURO
LMX518	SP-25-220	220mm diameter for 25mm cores	Aluminium	
LMX519	SP-25-220	220mm diameter for 25mm cores	Plastic	
LMX520	SP-38-220	220mm diameter for 38mm cores	Aluminium	
LMX521	SP-38-220	220mm diameter for 38mm cores	Plastic	
LMX522	SP-40-220	220mm diameter for 40mm cores	Aluminium	
LMX523	SP-40-220	220mm diameter for 40mm cores	Plastic	
LMX524	SP-40-300	300mm diameter for 40mm cores	Aluminium	
LMX525	SP-44-220	220mm diameter for 44mm cores	Aluminium	
LMX526	SP-44-220	220mm diameter for 44mm cores	Plastic	
LMX527	SP-70-220	220mm diameter for 70mm cores	Aluminium	
LMX528	SP-70-220	220mm diameter for 70mm cores	Plastic	
LMX529	SP-76-220	220mm diameter for 76mm cores	Aluminium	
LMX530	SP-76-220	220mm diameter for 76mm cores	Plastic	
LMX531	SP-76-300	300mm diameter for 76mm cores	Aluminium	
LMX532	SP-76-400	400mm diameter for 76mm cores	Aluminium	
LMX533	SP-ACH-220	220mm diameter for Adjustable Core Holders	Aluminium	
LMX534	SP-ACH-220	220mm diameter for Adjustable Core Holders	Plastic	
LMX535	SP-ACH-300	300mm diameter for Adjustable Core Holders	Aluminium	



SP-ACH



Various SP

January 2015

www.labelmateeurope.com brussels@labelmate.com

"RRC-330" Reel-to-Reel Counting Systems

RRC-330 Reel-to-Reel Counting Systems – For regular labels.

The RRC-330 Reel-to-Reel Counting Systems brings you new convenience in a self-contained table-top Label Counting System using a pre-set counter. The RRC-330 accepts rolls with a maximum size of 330mm. The optional built-in encoder allows length measurement and offers direct read-out in Metric or British & American Units.

RRC-330-U Universal Reel-to-Reel Counting Systems – For all type of labels.

The RRC-330-U Universal Reel-to-Reel Counting System uses a state of the art ultrasonic fork detector that allows the RRC-330-U to count any type of labels, including transparent or dark labels. The ultrasonic detector detects the labels by sensing the difference in thickness between the backing paper and the backing paper plus label.

All RRC-330 accept rolls with a maximum outer diameter of 330mm. Take-up core are available both in Standard and Adjustable Core Holder.

The Standard take-up shaft is fitted with a "Quick-Change" shaft that allows to quickly change the core holder diameter (38, 40, 44, 50, 70, 76 and 100mm available). Both shafts are supplied in both 40mm and 76mm (other core diameters available on-demand).

The ACH (Adjustable Core Holder) take-up shaft accepts cores from 25 to 101mm. The unwind shaft is equipped with the new Adjustable Wearless Brake system to adjust the web tension for tighter rewind rolls.

Designed for all-day, every-day use, the **RCC-330** and RRC-330-U Reel-to-Reel Counting Systems are backed by LABELMATE's famous **3-Year Parts and Labor Limited Warranty** (1-Year on power supplies), assuring you trouble-free performance.



RRC-330-U-ACH



RRC-330-STANDARD

P/N	MODEL	DESCRIPTION	LABEL WIDTH (mm)	ROLL DIAM (mm)	SPEED * (cm/sec)	PRICE EURO
LMC001	RRC-330-STANDARD	Self-contained Counter System with 220-240VAC, 50-60Hz, 100VA Universal Power Supply. 40 & 76mm for the unwind and take-up shafts (other diameters on demand). Size: W x D x H: 830 x 330 x 330 mm.	152	330	72 ¹ 235 ²	
LMC002	RRC-330-ACH	Self-contained Counter System with 220-240VAC, 50-60Hz, 100VA Universal Power Supply. 40 & 76mm for the unwind shaft. Adjustable Core Holder (25mm to 101mm) for the take-up shaft. Size: W x D x H: 830 x 330 x 330 mm.	152	330	72 ¹ 235 ²	

LMC003	RRC-330-U-STANDARD	Self-contained Counter System with 220-240VAC, 50-60Hz, 100VA Universal Power Supply. 40 & 76mm for the unwind and take-up shafts (other diameters on demand). Size: W x D x H: 830 x 330 x 330 mm.	152	330	72 ¹ 235 ²	
LMC004	RRC-330-U-ACH	Self-contained Counter System with 90-240VAC, 50-60Hz, 60VA Universal Power Supply. 40 & 76mm for the unwind shaft. Adjustable Core Holder (25mm to 101mm) for the take-up shaft. Size: W x D x H: 830 x 330 x 330 mm.	152	330	72 ¹ 235 ²	

¹ Maximum speed with a 76mm take-up roll diameter, at the beginning of the roll.

² Maximum speed at end of 330mm roll.

MAXIMUM LABEL ROLL WEIGHT: 7Kg.

RRC-330 REEL-TO-REEL COUNTING SYSTEMS OPTIONS

P/N	MODEL	DESCRIPTION	PRICE EURO
LMX452	ENC RRC	Optional built-in encoder for length measurement. Resolution: 4.4mm Direct read-out in Metric or British & American Units. NOT AVAILABLE ON RRC-330-U.	
LMX453	NO COUNTER	RRC without counter for simple reel-to-reel operations.	
LMX454	Quick-Change Shaft	Complete take-up shaft with vanes. NOT AVAILABLE FOR UNWINDING SHAFT.	

“COUNT” Heavy-Duty Label Counters

COUNT-100 and COUNT-200 Counters

The PC-1 Label Counter is a popular option on our S-100 and S-200 Label Slitters. Many times, however, users don't need to slit labels, just count them. To save users money, LABELMATE has two Label Counters based on the S-100 and S-200 Slitter chassis but without the Slitter function. The COUNT-100 and COUNT-200 will handle label webs up to 170 mm and 255 mm wide respectively. A CAT-3 Rewinder pulls the labels through the counter. The versatile Counters can be used at the output of a printer, or can be used with an Unwinder and a CAT-3 Rewinder to form a stand-alone off-line label inspection / counting station.

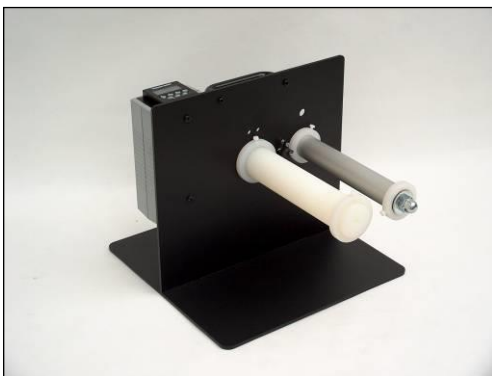
The COUNT-100 and COUNT-200 Counters can count up or count down to a preset count as you wish. If desired, when the pre-set count is reached, the COUNT-100 and COUNT-200 can send a “HALT” signal to the CAT-3 Rewinder, causing it to stop.

The counter sensor itself is a state-of-the-art infra-red transmitting device that shines through the label web and detects the gap between successive labels. There is a sensitivity control to adjust for different kinds of label webs.

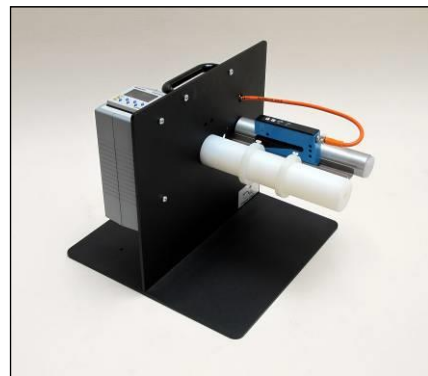
COUNT-100-U Universal Counter

The new COUNT-100-U Universal Counter uses a state of the art ultrasonic fork detector that allows the COUNT-100-U to count almost any type of labels, including transparent or dark labels. The ultrasonic detector detects the labels by sensing the difference in thickness between the backing paper and the backing paper plus label.

Quality and reliability are cornerstones of the LABELMATE Product Line. Rugged, heavy-gauge welded steel construction and precision parts yield a product of the highest quality. LABELMATE Products are trouble-free and covered by our famous **3-Year Parts and Labour Limited Warranty** (1-Year on power supplies), by far the longest in the industry.



COUNT-100



COUNT-100-U

P/N	MODEL	DESCRIPTION	LABEL WIDTH (mm)	PRICE EURO
LMC005	COUNT-100	PC-1 Preset Counter mounted on chassis with guides to position label web through sensor gap. Adjustable counter sensitivity. Counts single / multi-across labels or preset batch size. Can stop rewinder (CAT-3) automatically when job is finished. Size: W x D x H: 355 x 280 x 250 mm.	170	
LMC006	COUNT-200	Same as COUNT-100 with wider width capacity. Size: W x D x H: 435 x 280 x 250 mm.	255	

LMC007	COUNT-100-U	With ultrasonic fork detector to count any type of labels PC-1 Preset Counter mounted on chassis with guides to position label web through sensor gap. Adjustable counter sensitivity. Counts single / multi-across labels or preset batch size. Can stop rewinder (CAT-3) automatically when job is finished. Size: W x D x H: 355 x 280 x 250 mm.	170	
---------------	--------------------	---	-----	--

NOTE: Requires a CAT-3 Rewinder to pull your labels through the Counter. Can also be used with a Label Unwinder to form a complete off-line label counting and manual inspection station. No slitting function is included.

“PM-300-LS” & “PM-300-HS” Reel-to-Reel Label Printer Mechanism for Inkjet and Laser Heads

The **PM-300** Reel-to-Reel Printer Mechanism from LABELMATE. At speeds up to 235cm/sec, you can conveniently and economically print or overprint labels using your preferred inkjet head. With full status indicators and control features, the PM-300 is an ideal table top platform for OEM applications that use an ink-jet or laser head. When not used as a printer, the PM-300 can be used as a reel-to-reel Counter – Rewinder. The built-in encoder has a resolution of 0,041mm.

The PM-300-LS will print a 28cm diameter roll (425 meters) of labels in less than 7 minutes; the PM-300-HS will print the same roll in less than 5 minutes. The model choice is dictated by the performance of the printhead being used.

Designed for all-day, every-day use, the PM-300 Reel-to-Reel Printer Mechanism is backed by LABELMATE's famous **3-Year Parts and Labour Limited Warranty** (1-Year on power supplies), assuring you trouble-free performance (1-year power supply).



PM-300-LS/HS

KEY FEATURES

- **ENC:** Built-in encoder with resolution of 0,041mm. Output: Square waves: 0 – 15V.
- **Maximum roll diameter:** 300mm.
- **Max. roll weight:** 6Kg.
- **Label width:** up to 125mm.
- **Speeds:**
 - LS-Version:** Max. 150cm/sec. For a roll of 28cm diameter and a core of 76mm. E.g.: 7 min. for a roll of 28cm diameter with a 76mm core at full speed. Average speed: 100cm/sec.
 - HS-Version:** Max. 235cm/sec. For a roll of 28cm diameter and a core of 76mm. E.g.: 4,5 min. for a roll of 28cm diameter with a 76mm core at full speed. Average speed: 150cm/sec.
- Rugged construction.
- Secured DB-9 Print Head Connector.

The speed specifications apply for a machine used in normal office room temperatures.

KEY FEATURES (cont.)

- Adjustable Label Guide.
- 220/240V – 50-60Hz AC Input.
- Label sensor: Open collector output.

OPTIONS

- **PC-2:** Optional 6-digit pre-set counter.
- **PC-3:** Dual function preset counter. Allows to counts labels or show instantaneous web speed.
- **HSA™-BC:** Mounting bracket and cable for HSA™ printhead.
- **WEB-BC:** Mounting bracket and cable for Markoprint (Weber)™ X1-Jet print head.

“PM-300-CS” Constant Speed Reel-to-Reel Label Printer Mechanism for Inkjet and Laser Heads

For applications requiring constant speed.

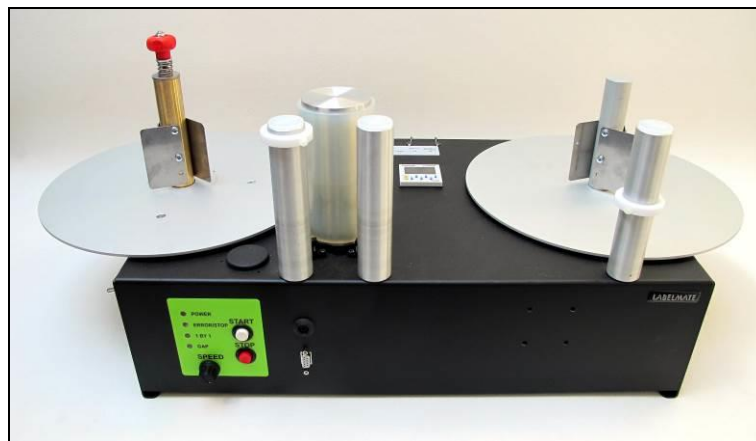
The PM-300-CS Constant Speed Reel-to-Reel Printer Mechanism from LABELMATE. This machine works at constant adjustable speed (independently of the supply and rewind roll diameters). The maximum speed is 65cm/sec. The long-term speed stability is +/-5%. For more precise print jobs, an optional encoder can be added.

The PM-300 is an ideal table top platform for OEM applications that use an ink-jet head. When not used as a printer, the PM-300 can be used as a reel-to-reel Counter – Rewinder. The optional built-in encoder has a resolution of 0,041mm.

Other options include a label counter or a more sophisticated counter that can be used to count labels or indicate the speed at which the labels are moving.

The PM-300-CS can also be used with certain laser heads.

Designed for all-day, every-day use, the PM-300 Reel-to-Reel Printer Mechanism is backed by LABELMATE's famous **3-Year Parts and Labour Limited Warranty** (1-Year on power supplies), assuring you trouble-free performance



PM-300-CS

KEY FEATURES

- **Maximum roll diameter:** 300mm.
- **Max. roll weight:** 6Kg.
- **Label width:** up to 125mm.
- **Speed:** Adjustable constant speed from 0 to max. 65cm/sec. Accuracy: +/- 5%.
- Rugged Construction.
- Secured DB-9 Print Head Connector.
- Adjustable Label Guide.
- 110-240V – 50-60Hz AC Input
- Label sensor: Open collector output.

The speed specifications apply for a machine used in normal office room temperatures.

OPTIONS

- **ENC:** Optional built-in encoder with resolution of 0,041mm. Output: Square waves: 0 – 15V.
- **PC-2:** Optional 6-digit pre-set counter.
- **PC-3:** Dual function preset counter. Allows to counts labels or show instantaneous web speed.
- **HSA™-BC:** Mounting bracket and cable for HSA™ printhead.
- **WEB-BC:** Mounting bracket and cable for Markoprint (Weber)™ X1-Jet print head.
- **CUST.:** Customised version.

January 2015

www.labelmateeurope.com brussels@labelmate.com

“PM-300-CS-STEP” Reel-to-Reel Constant Speed System

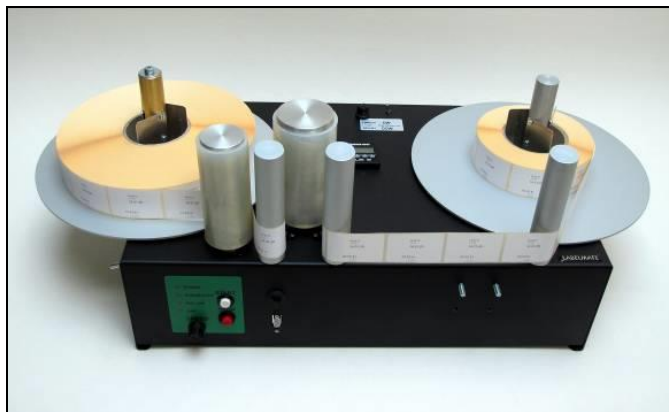
For applications requiring pausing between each label.

The PM-300-CS-STEP works at constant adjustable speed (independently of the supply and rewind roll diameters). The maximum speed is 65cm/sec. (or 61cm/sec. upon request). The long-term speed stability is +/- 5%. This model has a "1 by 1" mode that allows to stop automatically after each label and advances to the next label by a push button or by an external command. For more precise print jobs, an optional encoder can be added.

The PM-300-CS-STEP is an ideal table top platform for programming and reading RFID tags. When not used for programming, the PM-300-CS-STEP can be used as a reel-to-reel Counter – Rewinder. The optional built-in encoder has a resolution of 0,041mm.

Other options include a label counter or a more sophisticated counter that can be used to count labels or indicate the speed at which the labels are moving.

Designed for all-day, every-day use, the PM-300-CS-STEP Reel-to-Reel Constant Speed System is backed by LABELMATE’s famous **3-Year Parts and Labour Limited Warranty** (1-Year on power supplies), assuring you trouble-free performance.



PM-300-CS-STEP

KEY FEATURES

- **Maximum roll diameter:** 300mm.
- **Max. roll weight:** 6Kg.
- **Label width:** up to 125mm.
- **Speed:** Adjustable constant speed from 0 to max. 65cm/sec. Accuracy: +/- 5%. (61cm/sec. available upon request).
- Rugged Construction.
- Secured DB-9 Print Head Connector.
- Adjustable Label Guide.
- 110-240V – 50-60Hz AC Input
- Label sensor: Open collector output.

OPTIONS

- **ENC:** Optional built-in encoder with resolution of 0,041mm. Output: Square waves: 0 – 15V.
- **PC-2:** Optional 6-digit pre-set counter.
- **PC-3:** Dual function preset counter. Allows counting labels or showing instantaneous web speed.

The speed specifications apply for a machine used in normal office room temperatures.

January 2015

www.labelmateeurope.com brussels@labelmate.com

P/N	MODEL	DESCRIPTION	LABEL WIDTH (mm)	ROLL DIAM. (mm)	SPEED (cm/sec)	PRICE EURO
LMP003	PM-300-LS	Reel-to-Reel Label printer mechanism. Low speed model. Size: W x D x H: 800 x 380 x 330 mm.	125	300	150	
LMP004	PM-300-HS	Reel-to-Reel Label printer mechanism. High speed model. Size: W x D x H: 800 x 380 x 330 mm.	125	300	235	
LMP005	PM-300-CS	Reel-to-Reel Label printer mechanism. Constant speed model. Size: W x D x H: 800 x 380 x 330 mm.	125	300	65	
LMP006	PM-300-CS-STEP	Reel-to-Reel Label printer mechanism with constant speed and "1 by 1" mode Size: W x D x H: 800 x 380 x 330 mm.	125	300	65	

* Maximum speeds are specified with a 76mm take-up roll diameter.

E.g.: With the PM-300-HS 4.5 min. for a roll of 28cm diameter with a 76mm core at full speed. Average speed: 1.5m/sec.

MAXIMUM LABEL ROLL WEIGHT: 6Kg.

PM-300 REEL-TO-REEL SYSTEMS OPTIONS

P/N	MODEL	DESCRIPTION	PRICE EURO
LMX454	Quick-Change Shaft	Complete take-up shaft with vanes. NOT AVAILABLE FOR UNWINDING SHAFT.	
LMX478	ENC PM-CS	Optional built-in encoder with resolution of 0,041mm. For PM-300-CS & PM-300-CS-STEP.	
LMX474	PC-2	Optional 6-digit pre-set counter. Counts label batch size. Factory installed.	
LMX475	PC-3	Dual function preset counter. Allows to counts labels or show instantaneous web speed. Factory installed.	
LMX476	HSA™-BC	Mounting bracket and cable for HSA™ printhead.	
LMX477	WEB-BC	Mounting bracket and cable for Markoprint (Weber)™ X1-Jet print head.	
LMX505	PS-24V	220/240V – 50Hz AC Power supply. Output: 24V – 4.17A.	

“P-300” Reel-to-Reel Inkjet Label Printer

The **P-300 Reel-to-Reel Inkjet Label Printer** is a combination of the well-known **PM-300** Printer Mechanism and the Micron Controller. The system uses the reliable HP TIJ 2.5 technology.

The system is capable of printing a roll of labels of 30cm diameter, in less than 5 minutes with a resolution of 300x150 DPI, this with a negligible cost of the consumable (ink).

Not only, can the **P-300** print labels with messages of maximum 12,7mm height, **but the P-300 is the ideal machine for adding variable data to pre-printed labels, at low cost and high speed.**

The print files are generated on a standard computer using the supplied software and are transferred to the controller via an USB key.

The **P-300** uses a standard HP inkjet cartridge. It will print texts, graphics, barcodes, variable counter and dates at speeds up to 130cm/sec. at 300DPI and up to 235cm/sec. at 150DPI. The print height is 12.7mm. The printhead can be placed to print anywhere on a label of up to 100mm by 140mm.

The extremely low-cost of the consumable, makes the machine very economical and ecological.

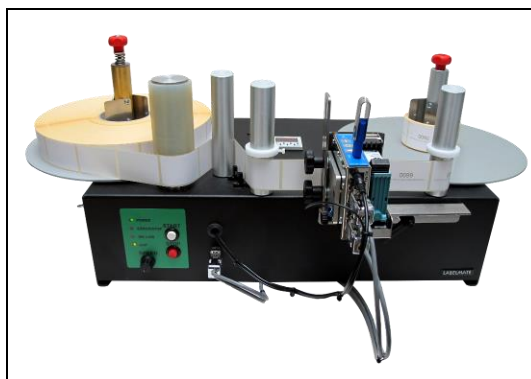
A large variety of ink types, readily available on the market, allow choosing the best cartridge for a specific job.

PRINTHEAD CAPABILITIES:

- Text graphics, barcodes, variable counter and dates.
- Fully UNICODE compatible layout software.
- Counter and dates with digits in roman, arab, farsi or user defined characters.
- Low ink alarm with user-definable level.
- Print height 12,7mm (1/2”).
- User-definable resolution: 300x300 DPI, 300x150 DPI, 150x150 DPI, 150x75 DPI and 75x75 DPI. **A special model for 600x300 DPI is available upon request.**
- Separation between design and operation. Nothing in the layout can be destroyed by the operator.
- Spit function to keep fast drying inks open.

HARDWARE SPECIFICATIONS:

- Maximum roll diameter: 300mm.
- Maximum label width: 125mm.
- Maximum label roll weight: 6Kg.
- Maximum speed:
 - P-300-LS: 150cm/sec. The low-speed is recommended if you are only printing in high resolution.
 - P-300-HS: 235cm/sec.
- Rewind “out” or “in”.
- Standard unwind and rewind core holders: 76mm (other sizes optional).
- Power: 220V – 50Hz (115V optional).
- With the proper ink and paper, the P-300 can also print on the backing paper.



P-300

January 2015

www.labelmateeurope.com

brussels@labelmate.com

P/N	MODEL	DESCRIPTION	LABEL WIDTH (mm)	ROLL DIAM. (mm)	SPEED (cm/sec)	PRICE EURO
LMP001	P-300-LS	Reel-to-Reel Inkjet Label printer low speed model. Recommended for high resolution. Size: W x D x H: 800 x 500 x 330 mm.	125	300	150	
LMP002	P-300-HS	Reel-to-Reel Inkjet Label printer high speed model. Recommended for printing in lower resolution. Size: W x D x H: 800 x 500 x 330 mm.	125	300	235	

* Maximum speeds are specified with a 76mm take-up roll diameter.

E.g.: With the P-300-HS under 5 min. for a roll of 28cm diameter with a 76mm core at full speed.
Average speed: 1.5m/sec.

MAXIMUM LABEL ROLL WEIGHT: 6Kg.

P-300 REEL-TO-REEL INKJET LABEL PRINTER OPTION

P/N	MODEL	DESCRIPTION	PRICE EURO
LMX454	Quick-Change Shaft	Complete take-up shaft with vanes. NOT AVAILABLE FOR UNWINDING SHAFT.	