

Sawflies of the Zselic Hills, SW Hungary (Hymenoptera: Symphyta)

ATTILA HARIS

H-8142 Úrhida, Petőfi str. 103, Hungary, e-mail: attilaharis@yahoo.com

HARIS, A.: *Sawflies of the Zselic Hills, SW Hungary (Hymenoptera: Symphyta)*.

Abstract: The first paper on sawflies of Zselicség (Hungary, South-West Transdanubia) is presented. 192 sawfly species are recorded. *Paracharactus (Dicrostema) gracilicornis* (Zaddach, 1859) is a new record for the Hungarian sawfly fauna.

Keywords: Hymenoptera, Symphyta, Zselic Hills, Hungary

Introduction

Zselicség (or Zselic Hills) is a landscape area in Southern Transdanubia (Hungary) extending North to the valley of River Kapos, South to Szigetvár and Mecsek Hills, East to Dombóvár and West to Lad. It is situated mainly in Somogy and Baranya counties, with an area also in Tolna County, rich in cultural and natural values (Figs 1, 2, 3, 4 and 5). The Zselicség is a hilly area (Fig. 4), its highest point being 357 m (Hollófészék). The lower regions are situated between 100-103 meters above sea level and the average height of the hills varies between 200-250 m. These surface formations are derived from the Pannon sediment. About 10 million years ago, this area was covered by the early Pliocene Pannon Sea. Its sediments (clay, sand and marl) are about 1000m thick at Kaposvár and reach even 2500m at South Zselic. On the sediments of the Pannonian Sea (Pannonian Plate), the surface formations were created by erosion and watercourses. Later, during the glacial periods, loess covered the Pannonian plates. The hills of Zselic form a watershed in East-West direction through the region. The water of the northern brooks (the largest is the Surján brook) is collected by the River Kapos and the southern by the River Dráva (like Brook Almás). In total, 31 smaller and larger brooks cross the land. These brooks are frequently dammed, creating small artificial ponds (mainly fishing ponds) like Vörösalma (Fig. 3), Petörke, Ropoly, Bánya, Szentbalázs and Gálosfa Ponds that enhances the aesthetic appeal of the landscape. The most important watercourses are: Brook Bárdi (length: 15 km, catchment area: 66.5 km²), Brook Berki (15 km, 67 km²), Brook Zselic (10.6 km, 21 km²), Brook Surján (20.5 km, 113 km²) belonging to the catchment area of River Kapos, with Brook Almás (221 km², 39.5 km) and Brook Gyöngyös (152 km², ill. 28 km) belonging to that of River Dráva.

The total area is approximately 103 000 acres. 9 046 acres is landscape protected area, most of which is forest; partly oak forests (*Quercus cerris* and *Quercus petraea*) with lime trees (*Tilia tomentosa*) and partly beech forests (*Fagus sylvatica*) mixed with hornbeam

(*Carpinus betulus*). Scots Pine (*Pinus sylvestris*) is native there but plantations of other conifer species are also widespread. A local curiosity is the Millennium Linden Forest established in 1896.

Climate is continental, influenced by Mediterranean effects. Winters are mild and summers hot. The yearly sunshine hours are between 1950-2500, increasing from West to East. Annual average precipitation about 700-750 mm and yearly mean temperature 9.8 – 10.7 °C.

First traces of human settlements date back to the 5th millennium BC. (Neolithic settlements at Szalacska and Visnye). Remains from Lipótfá, Kisasszond and the treasure of Simonfa are dated back to the Bronze Age. Hedrehely was a Celtic settlement once (after the 4th century BC). Although Pannonia was conquered by Romans after 35 AD, there hardly any traces of Romans in this area Roman fortress of Kaposszentjakab (coins, bronze statuettes). The first mention of Zselic is found in the donation certificate of Hungarian king László the 1st dated to 1093. In the 13th century 10 villages are recorded from the area, like Márcadó, Szerénke, Dercze, Vállusfej, Szerentelke, Nyírákol, Szentlászló, Bószénfa and Karan. All of them were the property of the Saint Jacob Abbey in Kaposszentjakab. After 1220, the Pannonhalma Abbey settled Slavonic lumberjacks to the Zselicség (the name of Kistótváros preserves their memories). Until the Turkish occupation the population was dominantly Hungarian. After the Turkish period, 90 of the original 130 villages were destroyed. The landowners replaced the mostly extinct Hungarian population with German settlers. Up to the 15th century, the members of the Győr dynasty were the lords of the Zselicség. Later, the land was passed to Lady Orsolya Deressfy. After her marriage to Prince Miklós Esterházy, the Esterházy dynasty became the major landowner. In our days, the most valuable territories including the protected area belong to Somogyi Forest Management and Timber Processing Company.

Although, the botanical investigation of the Zselicség was commenced by Pál Kitaibel in 1799, intensive zoological research started only comparatively recently, in the late 70's of the 20th century. Zoological investigation was started by amateur lepidopterologists from Kaposvár, namely by Sándor Pazsiczky and Miklós Nattán in the first half of the 20th century. Unfortunately, they did not publish their captures. The first zoological paper on the Zselicség (POLINSZKY 1886) was published by Emil Polinszky in 1886 on the beetle fauna of Somogy County, mainly around Szigetvár (in that time Szigetvár belonged to Somogy County). Unfortunately no one followed his publication activity. In the early 1980's, Ákos Uherkovich initiated the Zselic research. Because of a lack of money, he never published his planned monograph, therefore the manuscripts which had already been prepared were published in various local periodicals. Till now, 5 insect groups have been elaborated. Macrolepidoptera are represented by 889 species (ÁBRAHÁM 1989, 1992, ÁBRAHÁM and UHERKOVICH 1993, SZABÓ 2007, UHERKOVICH 1978, 1980, 1981, 1982a, b, UHERKOVICH and ÁBRAHÁM 2007), Aculeata (Hymenoptera) by 698 species (JÓZAN 1990, 1992, 2006), Syrphidae (Diptera) by 110 species (TÓTH 1992), Carabidae (Coleoptera) by 122 species (HORVATOVICH 1990), and Trichoptera by 84 species (NÓGRÁDI and UHERKOVICH 1990). Between 2006 and 2008, 3 biodiversity days (3 terms of 3 days in spring, summer and autumn seasons) were held in Gyűrűfű, Southern Zselic (Baranya county). The results these biodiversity days have been published in a separate monograph (ÁBRAHÁM 2009). Zoological results of Zselic researches are also included in the monograph titled "Catalogue of the fauna of Somogy County" (ÁBRAHÁM 2001). On the sawflies of Zselicség we have only sporadic data: firstly Haris published on the sawfly collection of the Somogy county museum and also the list of sawflies of Somogy county including numerous records from this region (HARIS 1998,

2001b), later he published a revised list of the Hungarian Nematinae including several places of capture from the Zselic Hills (HARIS 2001a) and finally Roller and Haris listed several new records of sawflies in their book, including also an elaboration of the already published data (ROLLER and HARIS 2008).

Material and methods

The first phase of collection by the author started in 1990 and lasted until 1992. These collections were restricted to Kaposmérő (Northern border of Zselic) and resulted in records of approximately 125 species. Seventeen years after, I was able to continue the investigation in other territories of the region. This year, I investigated the sawfly fauna of the Northern Zselic (Somogy part). This is the part where the Zselic Landscape Protected Area is situated, which is considered to support greatest biodiversity in the region.

For identification Zhelochovtsev's work on the sawflies of the European part of the former USSR (ZHELOCHOVTSEV 1988) was consulted, together with the Fauna Hungariae series (MÓCZÁR and ZOMBORI 1973, ZOMBORI 1982, 1990a). We also used some recent revisions to make the identification even more precise (BLANK and RITZAU 1998, HARIS 2006, HEIDEMAA et al., 2004, HEIDEMAA and VITASAARI 2004, KOCH 1988).

For the discussion of the distribution of sawflies, we consulted the book of Roller and Haris titled Sawflies of the Carpathian Basin, History and Current Research (ROLLER and HARIS 2008) and also the Compendium of Liston (LISTON 1995). The higher classification of sawflies applied follows the Hymenoptera part of Fauna Europaea (ACHTERBERG 2004). Our references for biological data of sawflies are SCHEDL 1991, KRAUS 1998, PSCHORN-WALCHER and ALTENHOFER 2000, 2006, CHEVIN 1985 and LISTON 1995, 1997, 2004.

The collected insects are deposited in the entomological collection of the Somogy County Museum, Kaposvár, Hungary.

List of localities and dates of capture

1. Zselickisfalud. Enyezd barracks. Pasture, South of the barracks, alongside the brook. 03. 04. 2009, 10. 04. 2009 and 08. 05. 2009. Between 46° 12' 24.12" N, 17° 45' 50.21" E and 46° 12' 33.31" N, 17° 45' 56.71" E.
2. Kaposszentbenedek. Meadows close to Petörke Lake and the Cloister including the hill behind the Saint Benedict monument. 05. 04. 2009, 10. 04. 2009, 19. 04. 2009, 26. 04. 2009, 10. 05. 2009, 12. 07. 2009, 19. 07. 2009 and 09. 08. 2009. Between 46° 19' 39.68" N, 17° 41' 58.11" E and 46° 20' 09.37" N, 17° 41' 59.84" E.
3. Bárdudvarnok: Lipótfá: Cseberki forest. Immediately after leaving the Kadarkút road towards Lipótfá. 05. 04. 2009. Around 46° 18' 00.33" N, 17° 39' 10.36" E.
4. Bárdudvarnok: Lipótfá. Immediately after leaving the Kadarkút road towards Lipótfá. 16. 05. 2009 and 26. 04. 2009. Around 46° 17' 56.28" N, 17° 39' 10.94" E.
5. Zselicszentpál: Drinking-water plant. Marshy meadow. 10. 04. 2009, 11. 04. 2009, 18. 04. 2009, 24. 04. 2009, 03. 05. 2009, 09. 05. 2009 and 16. 05. 2009. Between 46° 18' 19.10" N, 17° 49' 08.91" E and 46° 18' 12.70" N, 17° 49' 14.61" E.
6. Bőszénfa: Ropoly: Fish pond. 11. 04. 2009, 18. 04. 2009, 24. 04. 2009, 01. 05. 2009 and 08. 05. 2009. Around 46° 14' 39.30" N, 17° 46' 33.03" E.
7. Zselickisfalud: ferns in forest towards Ropoly, 2.0 km from road 67. 18. 04. 2009, 24. 04. 2009, 01. 05. 2009, 12. 07. 2009 and 18. 07. 2009. Between 46° 15' 22.12" N, 17° 48' 23.41" E and 46° 15' 25.50" N, 17° 48' 19.36" E.
8. Simonfa: Tótyai dűlő. Meadow 700 m from road 67. 24. 04. 2009, 03. 05. 2009 and 25. 04. 2009.

Between 46° 16' 08.23" N, 17° 49' 52.09" E and 46° 16' 03.22" N, 17° 49' 54.52" E.

9. Zselickislak: meadow near the roundabout at the end of the village. 25. 04. 2009, 01. 05. 2009, 08. 05. 2009, 15. 05. 2009, 23. 05. 2009, 30. 05. 2009, 06. 06. 2009, 20. 06. 2009, 12. 07. 2009 and 09. 08. 2009. Between 46° 18' 37.34" N, 17° 47' 45.65" E and 46° 18' 46.34" N, 17° 47' 45.62" E.

10. Simonfa: Fir forest. 1.9 km from road 67. 25. 04. 2009, 03. 05. 2009, 08. 05. 2009, 09. 05. 2009 and 09. 08. 2009. Between 46° 16' 11.80" N, 17° 50' 33.31" E and 46° 16' 21.13" N, 17° 50' 30.77" E.

11. Kaposgyarmat: right from the roundabout situated at the end of village, 1 km long. 01. 05. 2009, 15. 05. 2009 and 18. 07. 2009. Between 46° 16' 52.35" N, 17° 52' 35.97" E and 46° 17' 11.80" N, 17° 52' 31.89" E.

12. Szenna. Meadow at the end of the village towards Kaposvár, opposite the paintball field. 24. 05. 2009, 12. 07. 2009, 15. 08. 2009, 12. 04. 2009 and 04. 04. 2009. Between 46° 18' 38.08" N, 17° 44' 29.25" E and 46° 18' 35.83" N, 17° 44' 34.23" E.

13. Szenna: Denna meadow at Dennai forest (Fig. 5), South of Bánya and Lipótfá. 2009 04. 04., 10. 04. 2009, 26. 04. 2009, 16. 05. 2009, 24. 05. 2009, 30. 05. 2009, 20. 06. 2009 and 15. 08. 2009. Between 46° 15' 20.03" N, 17° 41' 15.40" E and 46° 15' 23.18" N, 17° 41' 05.54" E.

14. Sántos. Páprágypuszta South of the ruins. 23. 05. 2009, 06. 06. 2009 and 10. 08. 2009. Between 46° 21' 10.46" N, 17° 53' 16.57" E and 46° 21' 04.00" N, 17° 53' 40.92" E.

15. Kaposmérő, in 1990-1992. Mainly between 46° 21' 58.19" N, 17° 42' 27.61" E and 46° 21' 58.61" N, 17° 42' 38.08" E furthermore between 46° 21' 11.69" N, 17° 42' 35.68" E and 46° 21' 50.08" N, 17° 42' 38.53" E and 46° 21' 40.63" N, 17° 43' 24.22" E.

16. Szenna: at Denna forester's lodge at 03. 04. 2009. Around 46° 14' 16.96" N, 17° 42' 11.77" E. Close to Lipótfá.

17. Zselickisfalud. Meadow at Keleti Gyöngyös brook (2 km East of Enyezd barracks towards Lipótfá where forestry road crosses the brook), 03. 04. 2009. Between 46° 12' 09.38" N, 17° 45' 35.16" E and 46° 12' 05.38" N, 17° 45' 33.06" E.

18. Zselickisfalud: alongside the road, agricultural fields towards Kardosfa. 04. 04. 2009. Between 46° 16' 29.48" N, 17° 45' 14.66" E and 46° 16' 40.028" N, 17° 45' 13.20" E.

19. Bánya: lake. 2009 04. 05. Between 46° 16' 23.22" N, 17° 40' 09.74" E and 46° 16' 11.70" N, 17° 40' 05.39" E.

20. Kaposgyarmat: Old railway. Pasture and forest. 10. 04. 2009 Between 46° 16' 394.98" N, 17° 53' 46.70" E and 46° 16' 45.54" N, 17° 53' 50.21" E.

21. Bószénfa: Ropoly. Clearing in forest. 11. 04. 2009 Around 46° 15' 16.15" N, 17° 47' 02.89" E.

22. Zselickisfalud: marshy meadow, immediately after the village, close to Szilvásszentmárton. 11. 04. 2009 and 18. 04. 2009. Between 46° 16' 21.92" N, 17° 43' 46.31" E and 46° 16' 31.37" N, 17° 43' 52.68" E.

23. Kaposszerdahely: marshy meadow, inner area of the village, towards Kaposvár. 12. 04. 2009. Between 46° 19' 47.41" N, 17° 45' 28.84" E and 46° 19' 55.53" N, 17° 45' 30.90" E.

24. Gálosfa: meadow, inner area of the village towards Szentbalázs. 12. 04. 2009 and 2009 04. 24. Between 46° 14' 53.42" N, 17° 53' 32.31" E and 46° 14' 49.03" N, 17° 53' 34.05" E.

25. Zselickisfalud: Ropoly forestry road, forest, about 2 km from road 67. Around 46° 15' 27.92" N, 17° 48' 36.10" E

26. Bószénfa: Ropoly: meadow. Opposite the buildings. 18. 04. 2009, 09. 08. 2009 and 15. 08. 2009. Between 46° 15' 10.64" N, 17° 46' 46.47" E and 46° 15' 06.52" N, 17° 46' 44.90" E.

27. Cserénfa: Irafai forest. 2.4 km from road 66. 24. 04. 2009 Between 46° 17' 19.46" N, 17° 51' 21.12" E and 46° 17' 24.18" N, 17° 51' 19.39" E.

28. Cserénfa: Könyökes, alongside the forestry road. 4.2 km from road 66. 24. 04. 2009. Between 46° 16' 34.48" N, 17° 50' 49.66" E and 46° 16' 35.48" N, 17° 50' 46.08" E.

29. Cserénfa: Fürteleki forest. 25. 04. 2009. Between 46° 19' 42.32" N, 17° 52' 00.77" E and 46° 19' 40.66" N, 17° 51' 56.11" E.

30. Cserénfa: Irafai forest. Alongside the forestry road, 3 km from road 67. 12. 04. 2009. Between 46° 16' 12.79" N, 17° 50' 38.37" E and 46° 16' 15.52" N, 17° 50' 36.17" E.

31. Szentbalázs: Herceg-képe, top of the hill (Fig. 4), sweeping in the forest clearing, 2.7 km from the road to Pécs. 25. 04. 2009. Around 46° 18' 04.65" N, 17° 54' 12.08" E.

32. Szentbalázs: Nagy-Bicó: Forestry (Sefag) road, 800-1500 m North of the road to Pécs: forest and clearing. 03. 05. 2009. Between 46° 18' 56.80" N, 17° 56' 07.43" E and 46° 19' 49.70" N, 17° 54' 09.24" E.

33. Szentbalázs: Herceg-képe. Alongside the forestry road. 15. 05. 2009. Between 46° 18' 46.47" N, 17° 54'

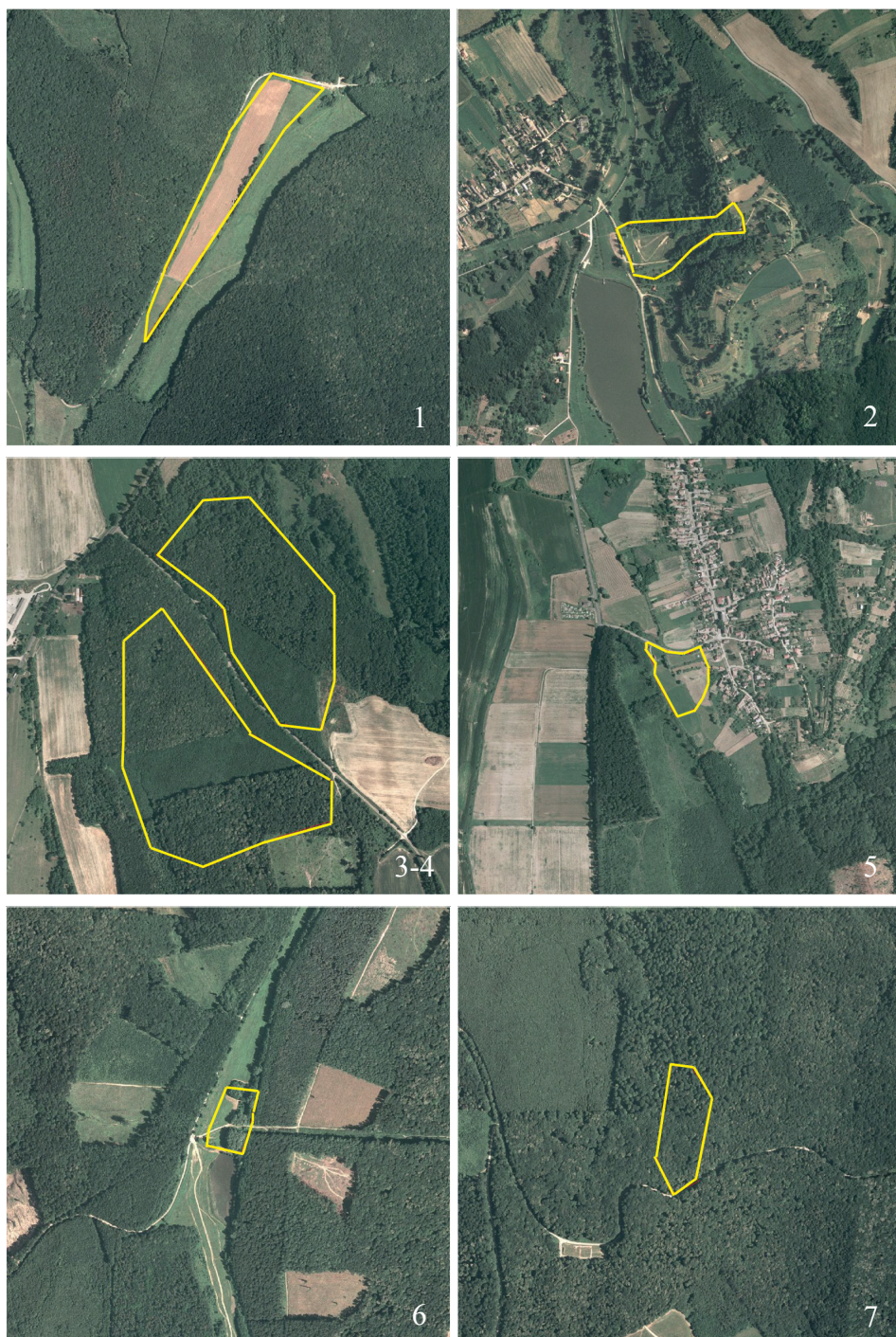


Fig. 1: Number of the figure refers to the number of the locality of the list

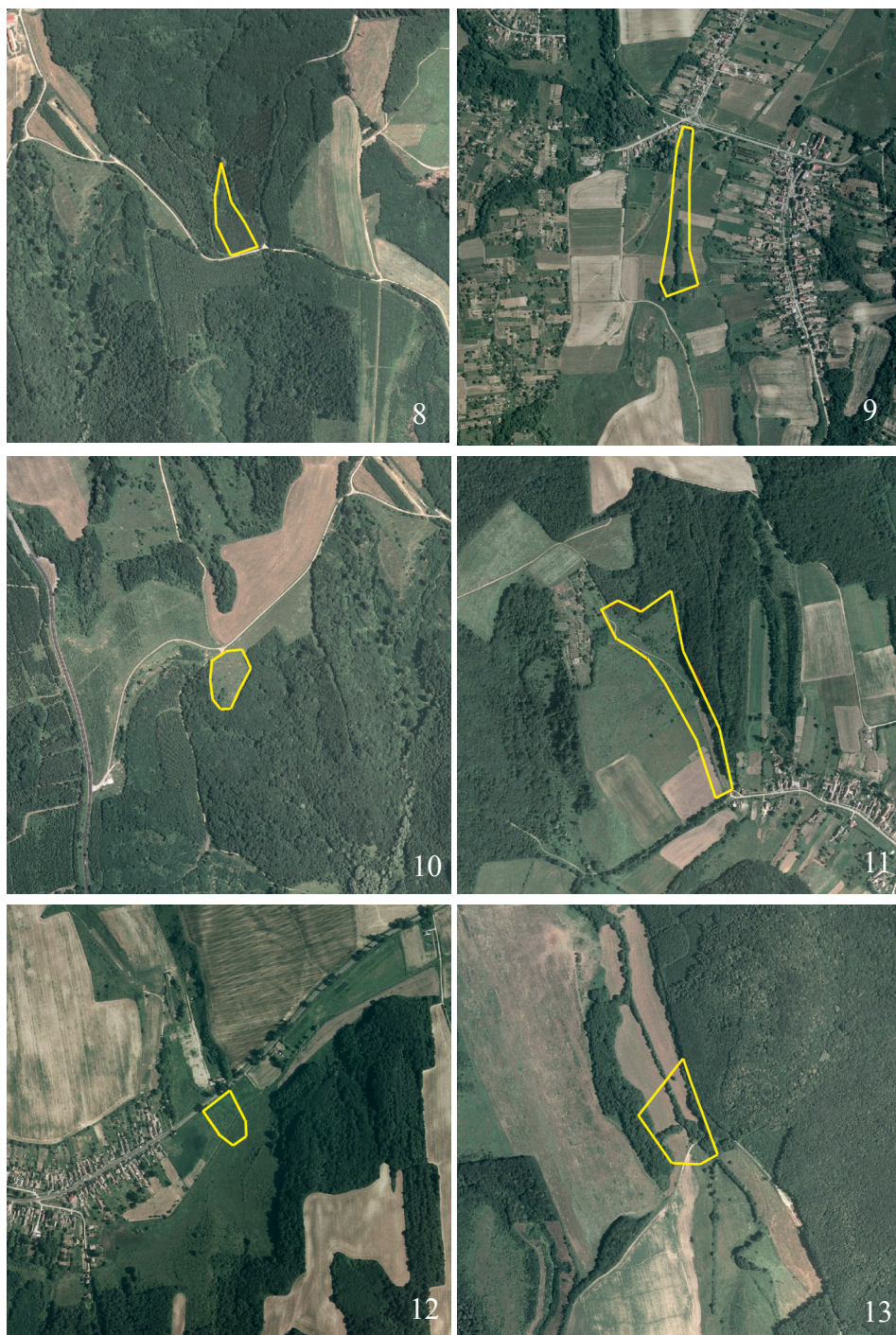


Fig. 1: Number of the figure refers to the number of the locality of the list

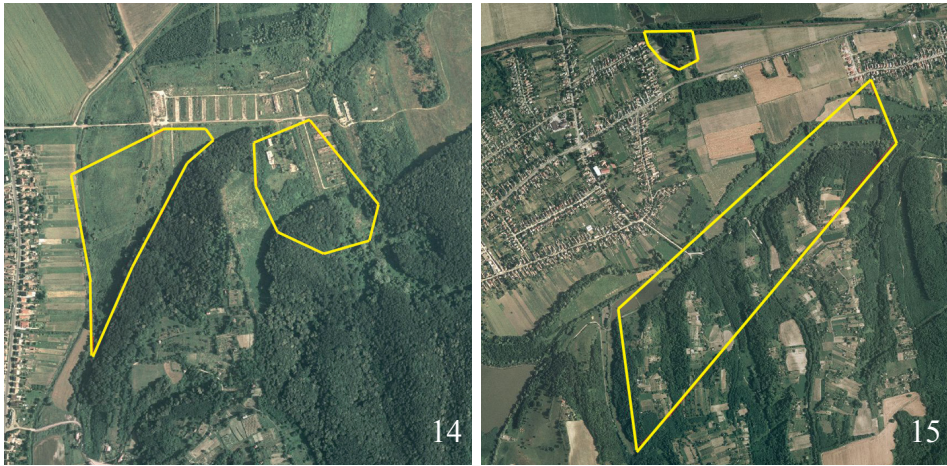


Fig. 1: Number of the figure refers to the number of the locality of the list

14.39" E and 46° 18' 31.41" N, 17° 54' 17.90" E.

34. Zselickisfalud: Kardosfa: towards Millenium Memory Linden Forest. 02. 05. 2009, 10. 05. 2009, 30. 05. 2009 and 15. 08. 2009. Around 46° 14' 42.24" N, 17° 45' 15.48" E.

35. Simonfa: Cserénfa-Simonfa forestry road, 2.1 km from Simonfa (road 67), sweeping on Salix. 03. 05. 2009. Around 46° 16' 13.21" N, 17° 50' 38.20" E.

36. Zselickisfalud: Ropoly forestry road, 4 km from the road 67. 08. 05. 2009. Between 46° 15' 36.30" N, 17° 47' 52.43" E and 46° 15' 45.09" N, 17° 48' 02.29" E.

37. Hajmás: hill before village, at right side of the road. 08. 05. 2009 and 23. 05. 2009. Between 46° 15' 42.55" N, 17° 54' 29.83" E and 46° 15' 33.92" N, 17° 54' 48.78" E.

38. Kaposvár: young fir plantation at the right side of road 67 towards Zselickislak. 09. 05. 2009. Around 46° 19' 52.31" N, 17° 47' 56.36" E.

39. Terecsény: forest, 700 m from the road 67. 09. 05. 2009. Between 46° 13' 08.81" N, 17° 51' 28.12" E and 46° 13' 19.03" N, 17° 51' 25.25" E.

40. Simonfa. Forestry road. 09. 05. 2009. Around 46° 16' 13.21" N, 17° 50' 38.20" E.

41. Cserénfa: Fürteleki forest. Forestry road (Sefag) North of Cserénfa, close to Sántos. 2.4 km from road 66. 23. 05. 2009. Between 46° 19' 32.47" N, 17° 51' 42.16" E and 46° 19' 28.04" N, 17° 51' 34.78" E.

42. Bánya: lake, fir plantation. 24. 05. 2009 and 30. 05. 2009. Between 46° 16' 15.05" N, 17° 40' 10.46" E and 46° 16' 11.80" N, 17° 40' 08.71" E.

43. Gálosfa: Vörös alma lake, edge of forest (Fig. 3). 10. 08. 2009 and 15. 08. 2009 Between 46° 14' 56.02" N, 17° 51' 56.03" E and 14' 56.48" N, 17° 51' 49.60" E.

List of species

Symphyla

Pamphilidae

Cephalcia abietis (Linné, 1758): Zselickislak, 15. 05. 2009, 1♂ - Hostplant: *Picea abies*. Sporadic.

Pamphilius ignymontiensis Lacourt, 1973: Zselicszentpál, 03. 05. 2009, 1♀ - Recently separated from *Pamphilius aurantiacus* (Giraud, 1857). Rare. Known hostplants: *Acer platanoides* and *A. campestre*.

Pamphilius sylvaticus (Linné, 1758): Kaposmérő, 16. 05. 1992, 1♀, Lad: Kótai forest (Kótai-erdő), 04. 05. 1994, 1♀, Zselickislak, 08. 05. 2009, 1♂ - One of the commonest sawfly species. Hostplants: *Sorbus aucupariae*, *Malus* spp., *Prunus* spp. and *Crataegus* spp.

Megalodontesidae

Megalodontes laticeps Konow, 1897: Gyűrűfü, 21. 05. 2006, 1♂ - Sporadic In Hungary. Hostplant Unknown.

Megalodontes plagiocephalus (Fabricius, 1804): Gyűrűfü, 20-22. 05. 2006, 3♀, 22-23. 06. 2007, 1♂, Kaposgyarmat, 15. 05. 2009, 1♀ - One of the most frequent Megalodontesidae species. Known hostplant: *Peucedanum alsaticum*.

Xiphidridae

Xiphidria camelus (Linné, 1758): Kaposmérő, 05. 05. 0991, 1♂ - Sporadic. Hostplants: *Betula* and *Alnus* spp.

Siricidae

Urocerus gigas gigas (Linné, 1758): Kaposvár, 13. 06. 1951, 1♀ - Widely distributed insect pest of timber and wood but not common in Hungary. This old specimen is from the Nattán Collection deposited in the Hungarian Natural History Museum. Larva lives in *Pinus*, *Picea*, *Larix* and *Abies* spp. but also reared from *Populus* and *Fraxinus* spp. (based on very old dubious records).

Tremex fuscicornis (Fabricius, 1787): Kaposvár, 15. 09. 2006, 1♀ - Widely distributed but not common in Hungary. Hostplants: *Fagus*, *Acer*, *Salix*, *Betula*, *Populus* and *Ulmus* spp.

Cephidae

Calameuta (Calameuta) filiformis (Eversmann, 1847): Kaposmérő, 13. 04. 1991, 1♀, 07. 06. 1991, 1♀, 15. 06. 1991, 1♂, 31. 05. 1991, 1♂, Bószénfa: Farkaslaki forest (Farkaslaki-erdő), 23. 05. 1997, 1♂, Gyűrűfü, 20-22. 05. 2006, 2♂, Kaposzentbenedek, 10. 05. 2009, 1♀, Zselickisfalud: Kardosfa, 10. 05. 2009, 2♀, Hajmás, 23. 05. 2009, 1♀, Simonfa: fenyves, 08. 05. 2009, 1♀ - Common species. Larva lives in stems of *Arrhenaterum elatius*, *Phalaris arundinacea*, *Calamagrostis epigeios*, *Elytrigia repens* and *Phragmites communis*.

Calameuta (Calameuta) haemorrhoidalis (Fabricius, 1781): Kaposmérő, 10. 05. 1991, 1♀, 23. 05. 1991, 1♀, 25. 05. 1991, 1♀, 02. 05. 1992, 1♀, 1♂, Gyűrűfü, 20-22. 05. 2006, 1♀, 1♂ - Frequent species. Hostplant unknown.

Calameuta (Calameuta) pallipes (Klug, 1803): Gyűrűfü, 20-22. 05. 2006, 1♂, 1♀, Simonfa: rét, 25. 04. 2009, 2♀, 1♂, Bószénfa: Ropoly pond (Ropoly: tó), 01. 05. 2009, 1♀, Zselickispál, 03. 05. 2009, 1♀, Bószénfa: Ropoly: tó, 08. 05. 2009, 1♀, Sántos, 23. 05. 2009, 1♀ - Frequent species. Hostplants: diverse *Graminae*.

Calameuta (Calameuta) punctata (Klug, 1803): Zselickisfalud: towards Szilvásszentmárton, 18. 04. 2009, 1♀ - Sporadic in Hungary.

Cephus brachycercus C. G. Thomson, 1871: Kaposmérő, 05. 05. 1991, 1♀ - Widely distributed, sporadic species. Hostplant unknown.

Cephus spinipes (Panzer, 1800) (syn. *Cephus cultratus* Eversmann, 1847): Kaposmérő, 31. 05. 1991, 1♂, Hajmás, 08. 05. 2009, 1♀, Kaposzentbenedek, 10. 05. 2009, 1♀, Zselickislak, 15. 05. 2009, 1♀, Kaposgyarmat, 15. 05. 2009, 1♀, Sántos, 23. 05. 2009, 1♀ - Frequent species. Known hostplant: *Phleum pratense*.

Cephus nigrinus C. G. Thomson, 1871: Kaposmérő, 12. 05. 1991, 1♀, 02. 05. 1992, 2♀, Gálosfa:



Fig. 2: Zselic landscape: Festetich house in Gálosfa (XVIII. c.)



Fig. 3: Zselic landscape: Vörösalma pond and forester's lodge



Fig. 4: Zselic landscape: Szentbalázs hills



Fig. 5: Zselic landscape: Szenna: Denna meadow

village, 24. 04. 2009, 1♂, Zselickislak, 25. 04. 2009, 1♀, 01. 05. 2009, 1♀, 1♂, 15. 05. 2009, 1♀, Bószénfa: Ropoly fishing pond (Ropoly: tó), 01. 05. 2009, 1♀ - Frequent species. Hostplants: *Milium effusum* and *Poa pratensis*.

Cephus pygmeus (Linné, 1767): Kaposmérő, 31. 05. 1991, 1♀, 1♂, 23. 06. 1991, 1♂, 16. 05. 1992, 1♂, Szentbalázs: Nagy-Bicó, 03. 05. 2009, 2♀, Szentbalázs: Herceg-képe, 15. 05. 2009, 1♀, Zselickislak, 30. 05. 2009, 1♀ - Common. Insect pest of cereals and *Graminae*.

Hartigia linearis (Schrank, 1781): Cserénfa, 30. 06. 1998, 1♀ - Sporadic. Larva feeds on *Agrimonia eupatoria*.

Hartigia nigra (Harris, 1776): Zselicszentpál, 09. 05. 2009, 1♀ - Sporadic in Hungary. Hostplants: *Rosa* and *Rubus* spp.

Argidae

Aproceros leucopoda Takeuchi, 1939: Szenna: Denna meadow (Dennai rét), 26. 04. 2009, 2♀ - Larva on *Ulmus* spp.

Arge berberidis Schrank, 1802: Kaposvár: Zaranyi forest, 19. 06. 1989, 1♀, 23. 07. 1991, 1♀, Kaposszentbenedek, 09. 08. 2009, 1♂ - Frequent in Hungary but rare in Zselicség. Larva on *Berberis* and *Mahonia* spp.

Arge cyanocrocea (Forster, 1771): Kaposmérő, 31. 07. 1990, 1♂, 15. 06. 1991, 1♀, 17. 07. 1991, 1♀, 25. 07. 1991, 1♀, 09. 08. 1991, 2♀, 15. 06. 1992, 1♂, Szenna: village, 24. 05. 2009, 3♀, 3♂, 12. 07. 2009, 1♀, 1♂, Szenna: Denna meadow (Dennai rét), 30. 05. 2009, 1♀, Kaposszentbenedek, 10. 05. 2009, 1♀, 14. 07. 2007, 1♂, Zselickislak, 20. 06. 2009, 1♀, 1♂, Sántos, 06. 06. 2009, 1♀ - Common species. Known hostplants: *Rubus idaeus* and *Sanguisorba officinalis*.

Arge enodis (Linné, 1767): Kaposmérő, 09. 07. 1990, 1♀, 17. 07. 1990, 1♀, 21. 07. 1990, 1♀, 21. 07. 1991, 1♀, 25. 07. 1991, 4♀, 31. 07. 1991, 1♀, 1♂, 01. 08. 1991, 1♀, 09. 08. 1991, 1♀, 12. 08. 1991, 2♂; Kaposvár: Zaranyi forest: 19. 06. 1989, 1♀, Zselickislak, 01. 05. 2009, 1♀, Kaposszentbenedek, 12. 07. 2009, 2♀, 1♂, 19. 07. 2009, 5♀, 2♂, Szenna, village, 12. 07. 2009, 1♂, Zselickisfalud: Ropoly, 09. 08. 2009, 1♀ - One of the commonest sawflies of the Zselic Hills. Hostplants: *Salix* spp.

Arge gracilicornis (Klug, 1814): Kaposmérő, 10. 08. 1990, 1♂ - Sporadic. Larva on *Rubus idaeus*.

Arge melanochra (Gmelin, 1790): Kaposmérő, 22. 07. 1990, 1♀, 17. 07. 1991, 1♂, 1♀, 19. 07. 1991, 1♂, 1♀, 21. 07. 1991, 1♀, 31. 07. 1991, 1♂, 01. 08. 1991, 1♀, 09. 08. 1991, 1♂, 24. 05. 1992, 1♂; Kaposvár: Zaranyi forest, 25. 07. 1991, 1♀, Kaposszentbenedek, 10. 05. 2009, 1♀, Szenna: village, 24. 05. 2009, 3♀, 3♂, 12. 07. 2009, 1♀, 2♂, Szenna: Denna meadow (Dennai rét), 30. 05. 2009, 1♀, Zselickislak, 06. 06. 2009, 2♀, 1♂, Sántos, 06. 06. 2009, 1♀, Szenna: loess mine (löszfeltárás), 14. 07. 2007, 1♂, Szenna: Gályi brook (Gályi-patak), 14. 07. 2007, 1♂ - The commonest Argid sawfly of the Zselic Hills. Hostplant: *Crataegus oxyacantha*.

Arge ochropus (Gmelin, 1790): Szenna: village (falú vége), 12. 07. 2009, 1♀ - Insect pest of *Rosa* spp. but not common.

Arge nigripes (Retzius, 1783): Kaposmérő, 01. 08. 1991, 1♂, 09. 08. 1991, 1♀ - Sporadic. Hostplants: *Rosa* spp.

Arge pagana pagana (Panzer, 1798): Kaposmérő, 25. 07. 1991, 1♂, 01. 08. 1991, 1♀, 07. 06. 1992, 1♀, Kaposszentbenedek, 12. 07. 2009, 2♀, 1♂, Sántos, 10. 08. 2009, 1♂ - Frequent. Hostplants: *Rosa* spp.

Arge rustica (Linné, 1758): Kaposmérő, 08. 08. 1991, 1♀, Kaposvár: Cseri-dűlő, 10. 08. 2008, 1♀ - Sporadic. Hostplant: *Quercus* spp.

Sterictiphora angelicae (Panzer, 1799): Kaposzentbenedek, 12. 07. 2009, 1♂, 19. 07. 2009, 1♂, Kaposgyarmat, 18. 07. 2009, Szenna, loess mine (löszfeltárás), 14. 07. 2007, 1♂ - Frequent species.

Cimbicidae

Abia nitens (Linné, 1758): Kaposmérő, 31. 07. 1990, 1♀ - Less frequent than next species. Hostplants: *Scabiosa columbaria* and *S. canescens*.

Abia sericea (Linné, 1767): Kaposmérő, 19. 07. 1991, 1♀, 21. 07. 1991, 1♀, 31. 07. 1991, 2♀, 09. 08. 1991, 1♂, 10. 08. 1991, 1 - Frequent. Larva on *Succisa*, *Knautia* and *Fragaria* spp.

Cimbex femoratus (Linné, 1758): Kaposvár, July of 1997 (no day), 1♂ - Widely distributed but not frequent in the Zselic Hills. Hostplants: *Betula pendula* and *B. pubescens*.

Cimbex luteus (Linnaeus, 1758): Szenna, 04. 06. 2002, 1♀ - Sporadic. Larva on *Populus tremula* and *Salix* spp.

Cimbex quadrimaculatus (O. F. Müller, 1766): Kaposmérő, June (no day). 1985, 1♀, Kaposvár, 01. 05. 1987, 1♀, Kaposvár: Zaranyi forest, 19. 06. 1989, 1♂, Kiskorpád, 25. 06. 1991, 1♀ - Frequent insect pest. Larva on *Crataegus*, *Pyrus* and *Prunus* spp.

Corynis crassicornis (Rossi, 1790): Kisasszond: built in area (belterület), 26. 04. 2006, 1♀ - Sporadic. Hosts are *Sedum* spp. (*S. album*, *S. acre* and *S. sexangulare*) (LISTON 1997).

Diprionidae

Diprion pini (Linné, 1758): Kaposvár: Zaranyi forest, 19. 06. 1989, 1♀, Bánya, 24. 05. 2009, 1♂, Zselickislak, 06. 06. 2009, 1♂, 20. 06. 2009, 1♂, 09. 08. 2009, 1♂ - Frequent. Insect pest of *Pinus* spp.

Gilpinia laricis (Jurine, 1807): Visnyeszéplak, 23. 06. 1985, 1♀ - Rare. Larva on *Pinus* spp.

Tenthredinidae

Allantinae

Allantus (Emphytus) calceatus (Klug, 1818): Kaposmérő, 29. 06. 1991, 1♀, Kaposvár: Toponár: built in area (belterület), 27. 08. 1996, 1♀ - Sporadic. Hostplants: *Rubus*, *Sanguisorba*, *Rosa*, *Filipendula*, *Fragaria* and *Alchemilla* spp.

Allantus (Emphytus) cinctus (Linné, 1758): Kaposvár: Zaranyi forest, 19. 06. 1989, 1♀, Kaposmérő, 03. 05. 1992, 1♀, Gyűrűfü, 21. 05. 2006, 1♂, Szentbalázs: Herceg-képe, 25. 04. 2009, 1♂, Zselicszentpál, 03. 05. 2009, 1♀ - Frequent. Hostplants: *Rosa* spp.

Allantus (Emphytus) cingulatus (Scopoli, 1763): Szenna: Denna meadow (Dennai rét), 26. 04. 2009, 1♂, Zselickislak, 01. 05. 2009, 1♀, 08. 05. 2009, 1♀, Simonfa: Tótyai dűlő, 03. 05. 2009, 1♂, Kaposgyarmat, 15. 05. 2009, 1♀ - Frequent. Larva on *Fragaria* and *Rosa* spp.

Allantus (Emphytus) didymus (Klug, 1818): Gyűrűfü, 21. 05. 2006, 1♀ - Sporadic. Larva on *Sanguisorba minor* and probably *Rubus* and *Rosa* spp.

Allantus (Emphytus) melanarius (Klug, 1818): Kaposvár: Zaranyi forest, 19. 06. 1989, 1♀, Kaposmérő, 26. 07. 1992, 1♀, Zselickislak, 08. 05. 2009, 1♀, Simonfa: Messzelátó, 21. 04. 2007, 1♀ - Frequent. Hostplant: *Cornus sanguinea*.

Ametastegia (Protetaphytus) carpini (Hartig, 1837): Zselickislak: Borgyan, 21. 04. 2007, 1♂ - Sporadic. Hostplant: *Geranium* spp.

Ametastegia (Ametastegia) equiseti (Fallén, 1808): Kaposmérő, 31. 08. 1991, 1♀, Gyűrűfü, 22. 06. 2007, 1♀, 1♂ - Frequent. Larva on *Chenopodium album*, *Lythrum salicaria*, *Polygonum persicaria* and



Fig. 6: *Tenthredo (Maculedo) vespiformis*
Schrank, 1781



Fig. 7: *Stromboceros delicatulus*
(Fallén, 1808)



Fig. 8: *Macrophya (Macrophya) tenella*
Mocsáry, 1881



Fig. 9: *Paracharactus (Dicrostema)*
gracilicornis (Zaddach, 1859)



Fig. 10: *Pamphilius ignymontiensis*
Lacourt, 1973



Fig. 11: *Aproceros leucopoda*
Takeuchi, 1939

Rumex acetosella.

Ametastegia (Protemphytus) tenera (Fallén, 1808): Kaposmérő, 08. 04. 1992, 1♂, 28. 06. 1992, 1♀, Kaposvár: Tókaj (in litt. Roller and Haris, 2008) - Frequent. Larva on *Rumex* spp.

Athalia bicolor Serville, 1823: Kaposmérő, 31. 05. 1991, 1♂, 16. 05. 1992, 1♂, Kaposgyarmat, 01. 05. 2009, 1♀, Zselicszentpál, 09. 05. 2009, 1♀, Kaposszentbenedek, 10. 05. 2009, 1♀, Szenna: Denna meadow (Dennai rét), 16. 05. 2009, 1♀, Sántos, 23. 05. 2009, 1♀ - Frequent. Hostplant: *Ranunculus* spp.

Athalia circularis (Klug, 1815): Kaposmérő, 15. 07. 1990, 1♀, 20. 08. 1990, 1♀, 19. 07. 1991, 1♂, 08. 08. 1991, 1♂, 24. 05. 1992, 1♀, 17. 06. 1992, 1♂, Gyűrűfü, 21. 05. 2006, 1♀, Zselickislak, 23. 05. 2009, 1♂, Gyűrűfü (in litt. Roller and Haris, 2008) - Frequent. Hostplants: *Arctium lappa*, *Ajuga reptans*, *Veronica beccabunga*, *V. longifolia*, *V. officinalis*, *Alliaria petiolata*, *Glechoma hederacea*, *Melampyrum*, *Capsella* and *Lycopus* spp.

Athalia cornubiae Benson, 1931: Kaposmérő, 31. 07. 1991, 1♀, Hajmás, 08. 05. 2009, 1♀ - Rare. Hostplant: *Sedum album*.

Athalia cordata Serville, 1823: Kaposvár: Zaranyi forest, 23. 07. 1991, 1♀, Kaposmérő, 04. 07. 1990, 1♀, 1♂, 28. 04. 1991, 1♂, 12. 05. 1991, 1♂, 16. 05. 1992, 2♀, 27. 06. 1992, 1♀, Kaposfő, 10. 05. 1991, 1♂, Kaposszentbenedek, 10. 04. 2009, 1♀, 19. 04. 2009, 1♀, 1♂, Zselickislak, 25. 04. 2009, 1♀, 15. 05. 2009, 1♀, 1♂, Szentbalázs: Herceg-képe, 25. 04. 2009, 1♂, Szenna: Denna meadow (Dennai rét), 26. 04. 2009, 2♀, Bőszénfa: Ropoly, 01. 05. 2009, 1♀, Zselicszentpál, 03. 05. 2009, 1♀, Hajmás, 08. 05. 2009, 1♂, Zselickisfalud: on ferns towards Ropoly, 18. 07. 2009, 1♂ - Common. Larva on *Misopates orontinum*, *Antirrhinum majus*, *Ajuga reptans*, *Teucrium scorodonia* and *Plantago* spp.

Athalia liberta (Klug, 1815): Kaposmérő, 25. 07. 1991, 1♀, 31. 07. 1991, 2♂, 01. 08. 1991, 1♀, 09. 08. 1991, 1♀, 25. 05. 1992, 1♀, Szentbalázs: Nagy-Bicó, 03. 05. 2009, 1♂, Szentbalázs: Herceg-képe, 25. 04. 2009, 1♂, Zselickislak, 23. 05. 2009, 1♂ - Frequent. Feeding on *Alliaria petiolata*, *Arabidopsis thaliana*, *Cardamine hirsuta* and *Sisymbrium officinale*.

Athalia lugens (Klug, 1815): Kaposmérő, 29. 06. 1991, 1♂, 31. 07. 1991, 1♀, 1♂, 26. 07. 1992, 1♀, Kaposszentbenedek, 19. 07. 2009, 1♀ - Sporadic. Feeding on various *Cruciferae*.

Athalia rosae (Linné, 1758): Kaposmérő, 15. 07. 1990, 1♂, 13. 07. 1991, 1♀, 19. 07. 1991, 1♀, 31. 08. 1991, 1♀, 17. 06. 1992, 1♀, 28. 06. 1992, 2♀, Kaposvár: Zaranyi forest, 23. 07. 1991, 1♂, 3♀, Sántos, 23. 05. 2009, 1♂, 10. 08. 2009, 2♀, 1♂, Szenna: Denna meadow (Dennai rét), 24. 05. 2009, 1♀, 30. 05. 2009, 1♂, 15. 08. 2009, 1♂, Szenna: loess mine (löszfeltárás), 14. 07. 2007, 1♀, Zselickisfalud: Kardosfa, 30. 05. 2009, 1♀, Zselickislak, 12. 07. 2009, 1♂, 09. 08. 2009, 3♀, Kaposszentbenedek, 12. 07. 2009, 3♀, 19. 07. 2009, 2♀, 09. 08. 2009, 4♀, 3♂ - Common insect pest. Hostplants: *Raphanus sativus*, *R. raphanistrum*, *Sinapis arvensis*, *Sisymbrium officinale*, *Armoracia rusticana*, *Barbarea* sp., *Brassica napus*, *B. juncea*, *B. rapa*, *B. oleracea*, *Tropaeolum majus*, *Sinapis arvensis*, *Alliaria petiolata* and *Cardamine* spp.

Caliroa cerasi (Linné, 1758): Kaposmérő, 29. 06. 1992, 1♀ - Sporadic pest. Larva on *Prunus cerasi*, *P. avium*, *P. padus*, *P. spinosa*, *Cotoneaster* sp., *Malus* spp., *Betula* spp., *Mespilus germanica*, *Quercus* spp., *Rosa* spp., *Rubus* spp., *Salix* spp., *Amelanchier lamarckii*, *Crataegus monogyna*, *Cydonia oblonga*, *Pyrus communis*, *Sorbus aucuparia*, *Padus* spp. and *Persica vulgaris*.

Empria sexpunctata (Serville, 1823) (syn.: *Empria klugii* (Stephens, 1835)): Szentbalázs: Herceg-képe, 25. 04. 2009, 1♀, Simonfa, Tótyai-dűlő, 09. 05. 2009, 1♀, Kaposvár: Tókaj (in litt. Roller and Haris, 2008) - Frequent. Larva on *Geum* spp.

Empria liturata (Gmelin, 1790): Szenna: Dennai forester's lodge (erdészház), 03. 04. 2009, 1♂, Zselickisfalud: Enyezdi barrack, 10. 04. 2009, 2♀, 1♂, Kaposzderdahely, 12. 04. 2009, 1♀, Zselicszentpál, 18. 04. 2009, 1♀, Zselickisfalud: ferns towards Ropoly, 18. 04. 2009, 1♂, 01. 05. 2009, 1♀, Bőszénfa: Ropoly fishing pond (Ropoly: tó), 11. 04. 2009, 1♀, Szentbalázs: Herceg-képe, 25. 04. 2009, 1♀, Kaposszentbenedek,

26. 04. 2009, 1♀ - Frequent. Hostplants: *Fragaria* and *Geum* spp.

Empria tridens (Konow, 1896): Cserénfa: Irafai forest (Irafai-erdő), 12. 04. 2009, 2♀, Zselicszentpál, 03. 05. 2009, 1♀ - Frequent. Hostplants: *Geum* spp. and *Rubus idaeus*.

Eriocampa ovata (Linné, 1761): Kaposméről, 15. 06. 1991, 1♀, 31. 07. 1991, 1♀, Szenna: Denna meadow (Dennai rét), 30. 05. 2009, 2♀ - Frequent on *Alnus glutinosa* and *A. incana*.

Eriocampa umbratica (Klug, 1816): Böszénfa: Ropoly: tó, 04. 24. 2009, 1♀, 01. 05. 2009, 1♀, 6♂, 08. 05. 2009, 1♀, 1♂ - Frequent on *Alnus glutinosa* and *A. incana*.

Harpiphorus lepidus (Klug, 1818): Szentbalázs: Nagy-Bicó, 03. 05. 2009, 1♀ - Rare. Hostplants: *Quercus* spp.

Monostegia abdominalis (Fabricius, 1798): Kaposméről, 07. 06. 1991, 1♀ - Sporadic. Recorded on *Glaux maritima*, *Lysimachia numularia* and *L. vulgaris*.

Monostegia nigra (Konow, 1896): Kaposméről, 07. 08. 1991, 1♀ - Sporadic. Hostplant: *Lysimachia punctata*.

Monsoma pulveratum (Retzius, 1783): Zselickisfalud: ferns towards Ropoly, 18. 04. 2009, 1♀ - Sporadic. Living on *Alnus* and *Salix* spp.

Taxonus agrorum (Fallén, 1808): Kaposméről, 16. 06. 1991, 1♂, 14. 07. 1991, 1♂, Simonfa: fir forest, 25. 04. 2009, 2♂ - Frequent. Hostplant: *Rubus idaeus*.

Selandrinae

Birka cinereipes (Klug, 1816): Gyűrűfű, 22-23. 06. 2007, 1♂ - Sporadic. Hostplants: *Myosotis* spp.

Nesoselandria morio (Fabricius, 1781): Kaposméről, 31. 05. 1991, 1♂, 16. 05. 1992, 1♂, 24. 05. 1992, 1♀, 07. 06. 1992, 1♀, Zselickislak, 23. 05. 2009, 1♂, Gyűrűfű (in lit. ROLLER and HARIS 2008) - Frequent. Hostplants: *Brachytegium reflexum*, *Ceratodon purpureus*, *Chenopodium album*, *Dicranum scoparium*, *Fragaria vesca*, *Hedwigia ciliata*, *Myosotis arvensis*, *Plagiommium cuspidatum*, *Plagiothecium denticulatum*, *Polygonum aviculare*, *Polytrichum commune*, *Pseudobryum cinclidiodes*, *Sanionia uncinata*, *Stellaria media*, *Veronica chamaedrys* and *V. officinalis*.

Selandria serva (Fabricius, 1793): Kaposméről, 31. 07. 1990, 1♂, 24. 08. 1990, 1♀, 09. 08. 1991, 1♀, 12. 08. 1991, 1♂, 31. 08. 1991, 1♀, 14. 07. 2007, 1♂, Gyűrűfű (in lit. ROLLER and HARIS 2008). - Frequent. Host plants: *Poaceae*, *Carex* spp. and *Juncus* spp.

Stromboceros delicatulus (Fallén, 1808): Cserénfa: Könyökes, 24. 04. 2009, 1♀, Zselickisfalud, ferns towards Ropoly, 12. 07. 2009, 1♂ - Rare. Larva on *Pteridium aquilium*, *Athyrium filix-femina*, *Onoclea struthiopteridis* and *Polypodium vulgare*.

Dolerinae

Dolerus (Dolerus) bajulus Serville, 1823: Kaposméről, 12. 05. 1991, 1♀, 01. 08. 1991, 1♀, 03. 08. 1991, 1♀, 12. 08. 1991, 1♀, 18. 07. 1992, 1♂ - Frequent. Hostplants: *Equisetum* spp.

Dolerus (Poodolerus) aeneus Hartig, 1837: Böszénfa: Ropoly fishing pond (Ropoly: tó), 18. 04. 2009, 1♀, 1♂ - Sporadic. Hostplants: *Graminae*.

Dolerus (Poodolerus) anthracinus (Klug, 1818): Kaposméről: marsh meadow at River Kapos (mocsárrét a Kapos partján), 23. 03. 1991, 1♀, Zselickisfalud: Enyezdi barrack, 03. 04. 2009, 1♀ - Sporadic. Hostplants: *Graminae*.

Dolerus (Poodolerus) asper Zaddach, 1859: Kaposméről, 18. 04. 1992, 1♀ - Sporadic.

Hostplants: *Graminae* and *Cyperaceae*.

Dolerus (Poodolerus) blanki Liston, 1995: Kaposvár: Tókaji forest (Tókaji parkerdő), 10. 04. 1994, 1♂ - Rare.

Dolerus (Dolerus) bimaculatus (Geoffroy, 1785): Kaposmérő, 16. 05. 1992, 1♀ - Sporadic. Larva on *Equisetum* spp.

Dolerus (Poodolerus) brevicornis Zaddach, 1859: Kaposvár (in litt. Roller and Haris, 2008), Kaposszentbenedek, 10. 04. 2009, 1♀ - Sporadic. Larva on *Graminae*.

Dolerus (Oncodolerus) eversmanni W. F. Kirby, 1882: Kaposvár: Tókaji forest (Tókaji parkerdő), 10. 04. 1994, 1♂, Kaposgyarmat: old railway (régi vasút), 10. 04. 2009, 2♂, Zselickislak, 25. 04. 2009, 1♂, 01. 05. 2009, 1♂ - Frequent. Larva on *Equisetum arvense* and *E. palustre*.

Dolerus (Dolerus) germanicus (Fabricius, 1775): Kaposmérő, 05. 05. 1991, 2♂, 20. 05. 1991, 2♀, 19. 08. 1991, 1♀, 17. 05. 1992, 1♀, 23. 06. 1992, 1♀, 18. 07. 1992, 1♀, Gyűrűfű, 20-22. 05. 2006, 3♀, 1♂, Zselicszentpál, 18. 04. 2009, 2♂, 03. 05. 2009, 1♀, 22-23. 06. 2007, 1♀, Zselickislak, 25. 04. 2009, 2♂, 01. 05. 2009, 1♂, Kaposgyarmat, 15. 05. 2009, 1♀, Kaposszentbenedek, 12. 07. 2009, 1♀, Szenna: village, 12. 07. 2009, 1♀, Szenna: valley of Gályi brook (Gályi-patak völgye), 14. 07. 2009, 1♂, Kaposvár (in lit. ROLLER and HARIS 2008) - Common. Larva on *Equisetum arvense* and *E. palustre*.

Dolerus (Poodolerus) gonager (Fabricius, 1781): Kaposmérő: Jókai str. 9., 13. 04. 1991, 1♀, Kaposvár: Zaranyi forest, 19. 06. 1989, 1♂, Gálosfa: village, 12. 04. 2009, 1♀, Zselickislak, 25. 04. 2009, 1♀, Szenna: Denna meadow (Dennai-rét), 26. 04. 2009, 1♀, Simonfa: fir forest, 03. 05. 2009, 1♀, Bószénfa (in lit. Roller and Haris, 2008) - Common. Larva on *Graminae*.

Dolerus (Poodolerus) niger (Linné, 1767): Kaposmérő, 25. 07. 1992, 1♀ - Sporadic. Larva on *Graminae*.

Dolerus (Poodolerus) nigratus (O. F. Müller, 1776): Kaposmérő, 10. 05. 1991, 1♀, 12. 05. 1991, 2♀, 04. 04. 1991, 2♀, 26. 04. 1991, 2♂, 05. 04. 1992, 1♀, 08. 04. 1992, 1♂, 25. 04. 1992, 1♀, 02. 05. 1992, 1♀, Kaposmérő: at River Kapos (Kapos part): 23. 03. 1991, 2♂, 13. 04. 1991, 1♀, Kaposvár: Zaranyi forest: 19. 06. 1989, 2♂, Szenna: Denna forester's lodge (Dennai erdészház), 03. 04. 2009, 2♀, Zselickisfalud:)Keleti.Gyöngyös brook) Keleti Gyöngyös-patak, 03. 04. 2009, 1♂, Zselickisfalud, Enyezdi barrack, 03. 04. 2009, 1♂, 10. 04. 2009, 2♀, 1♂, Szenna: Denna meadow (Dennai-rét), 04. 04. 2009, 1♀, 1♂, Zselickisfalud: Kardosfa, 04. 04. 2009, 1♀, Szenna: village, 04. 04. 2009, 1♀, 12. 04. 2009, 1♀, Bánya: lake (tópart), 05. 04. 2009, 2♀, Kaposszentbenedek, 10. 04. 2009, 3♀, 19. 04. 2009, 1♀, Bószénfa: Ropoly, 11. 04. 2009, 1♀, 1♂, Zselicszentpál, 18. 04. 2009, 3♀, 1♂, Gálosfa: village, 24. 04. 2009, 2♀, Zselickislak, 15. 05. 2009, 1♀ - Common. Larva on *Graminae* including cereals.

Dolerus (Poodolerus) nitens Zaddach, 1859: Kaposmérő: marshi meadow at River Kapos (Kapospart: láprét), 23. 03. 1991, 2♀, Szenna: Denna: forester's lodge (Dennai erdészház), 03. 04. 2009, 1♂, Zselickisfalud: Enyezdi barrack, 03. 04. 2009, 2♀, 10. 04. 2009, 1♀, Szenna: Denna meadow (Dennai rét), 04. 04. 2009, 2♀ - Frequent. Larva on *Cyperaceae* and *Graminae*.

Dolerus (Poodolerus) picipes (Klug, 1818): Kaposmérő, 13. 04. 1991, 1♀, 26. 04. 1991, 1♀, 05. 05. 1991, 1♀, 02. 05. 1992, 1♀ - Frequent. Larva on *Graminae*.

Dolerus (Poodolerus) puncticollis C. G. Thomson, 1871: Kaposmérő, 17. 03. 1990, 1♂, 14. 04. 1990, 1♂, 01. 04. 1991, 1♂, Kaposvár: Zaranyi forest: 19. 06. 1989, 1♀, 1♂, Szenna: Denna: forester's lodge (Dennai erdészlak), 03. 04. 2009, 1♀, 1♂, Zselickisfalud: Keleti-Gyöngyös brook (Keleti Gyöngyös patak), 03. 04. 2009, 3♂, Zselickisfalud: Enyezdi barrack, 03. 04. 2009, 1♀, 10. 04. 2009, 1♂, Kaposszentbenedek, 05. 04. 2009, 1♂, 10. 04. 2009, 1♀, Bánya: lake (tópart), 05. 04. 2009, 1♂, Bószénfa: Ropoly: clearing, 11. 04. 2009, 1♀, Gálosfa: village, 12. 04. 2009, 1♀ - Common. Larva on *Graminae* including cereals.

Dolerus (Poodolerus) sanguinicornis (Klug, 1818): Kaposfő, 18. 05. 1983, 1♀ - Sporadic.

Dolerus (Achaetoprion) triplicatus (Klug, 1818): Kaposmérő: at River Kapos: marshy meadow, 13. 04. 1991, 1♂ - Sporadic. Larva on *Juncus filiformis* and *J. effusus*.

Dolerus (Dicrodolerus) vestigialis (Klug, 1818): Kaposmérő, 24. 05. 1992, 1♀, Gyűrűfű, 20-22. 05. 2006, 2♀, Zselicszentpál, 18. 04. 2009, 1♂, 24. 04. 2009, 1♀, 03. 05. 2009, 2♀, 09. 05. 2009, 1♀, Zselickisfalud, village, towards Szilvásszentmárton, 18. 04. 2009, 1♂, Gálosfa: village, 24. 04. 2009, 1♀, Zselickislak, 25. 04. 2009, 1♂, 01. 05. 2009, 2♀, 1♂, 30. 05. 2009, 1♀, Simonfa: fir forest, 25. 04. 2009, 4♀, Hajmás, 08. 05. 2009, 2♀, Bánya: lake (tópart), 24. 05. 2009, 1♀, 1♂ - Common. Hostplants: *Equisetum palustre*, *E. sylvaticum*, *E. arvense* and *E. pratense*.

Blennocampinae

Blennocampa phyllocolpa Viitasaari & Vikberg, 1985 (= *Blennocampa pusilla* (Klug, 1816)): Kaposmérő, 12. 05. 1991, 2♂, 02. 05. 1992, 2♂, Zselickislak, 25. 04. 2009, 1♀, Simonfa: fir forest, 25. 04. 2009, 1♀, Simonfa, Tótyai-dűlő, 25. 04. 2009, 1♀, 03. 05. 2009, 2♀ - Frequent. Larva rolls the leaves of *Rosa* spp.

Cladardis elongatula (Klug, 1817): Kaposmérő, Jókai str. 9., 02. 05. 1992, 2♀, 1♂ - Locally frequent. Hostplants: *Rosa* spp.

Claremontia alternipes (Klug, 1816): Kaposmérő, 10. 05. 1991, 1♀, 1♂, Cserénfa: Könyökes, 24. 04. 2009, 1♀, Simonfa, fir forest, 08. 05. 2009, 1♀ - Sporadic. Hostplant: *Rubus idaeus*.

Claremontia puncticeps (Konow, 1886): Szenna, Denna: forester's lodge (Dennai erdőszház), 03. 04. 2009, 1♀ - Rather rare. Hostplant: *Sanguisorba minor*.

Claremontia tenuicornis (Klug, 1816): Kaposmérő, 02. 05. 1992, 1♀ - Rather rare. Larva on *Filipendula ulmaria* and *Alchemilla* spp.

Eutomostethus ephippium (Panzer, 1798): Kaposmérő, 15. 06. 1990, 1♀, 15. 07. 1990, 1♂, 31. 07. 1990, 1♂, 05. 05. 1991, 2♂, 10. 05. 1991, 1♀, 07. 06. 1991, 1♂, 10. 05. 1991, 2♂, 23. 06. 1991, 1♀, 1♂, 04. 07. 1991, 1♂, 25. 07. 1991, 1♂, 12. 08. 1991, 1♂, 02. 05. 1992, 1♂, Kaposvár, 14. 07. 1991, 1♀, 4♂, Kaposvár: Zaranyi forest: 19. 06. 1989, 2♀, 23. 07. 1991, 1♀, 2♂, Zselicszentpál, 18. 04. 2009, 2♂, 24. 04. 2009, 1♀, 03. 05. 2009, 1♀, 1♂, Böszénfa: Ropoly: fishing pond (Ropoly: tó), 24. 04. 2009, 1♂, 01. 05. 2009, 1♂, Zselickislak, 24. 04. 2009, 1♀, 01. 05. 2009, 2♀, Cserénfa, Fűrteleki forest (Fűrteleki-erdő), 25. 04. 2009, 1♀, Bárdudvarnok: Lipótfá, 26. 04. 2009, 1♂, Szenna: Denna meadow (Dennai rét), 26. 04. 2009, 1♂, Hajmás, 08. 05. 2009, 1♂, Simonfa: fir forest, 08. 05. 2009, 2♂, 09. 05. 2009, 2♂, Szentbalázs: Herceg-képe, 15. 05. 2009, 1♂, Gyűrűfű, Kaposfő (in lit. Roller and Haris, 2008) - Common everywhere. Larva on *Graminae*.

Eutomostethus gagathinus (Klug, 1816): Gyűrűfű, 20-22. 05. 2006, 2♀, Kaposszentbenedek, 10. 05. 2009, 1♂ - Sporadic.

Eutomostethus luteiventris (Klug, 1816): Kaposmérő, 05. 04. 1992, 1♀, Gyűrűfű, 20-22. 05. 2006, 1♀, Zselickislak, 01. 05. 2009, 1♀ - Locally frequent but sporadic in the Zselic Hills. Larva on *Juncus effusus*.

Fenusa (Fenusa) dohrnii (Tischbein, 1846): Böszénfa: Ropoly: fishing pond (Ropoly: tó), 01. 05. 2009, 1♀ - Sporadic. Hostplants: *Alnus* spp.

Fenusella nana (Klug, 1816): Kaposszentbenedek: Petörke lake on Betula (Petörkei tó partja, nyír), 12. 07. 2009, 1 larva in mine - Rare. Hostplants: *Betula pendula* and *B. pubescens*.

Halidamia affinis (Fallén, 1807): Kaposmérő, 16. 06. 1991, 1♀, 24. 05. 1992, 1♀, Zselicszentpál, 24. 04. 2009, 1♀, Böszénfa: Ropoly: fishing pond (Ropoly: tó), 24. 04. 2009, 2♀, Szenna: Denna meadow (Dennai rét), 26.

04. 2009, 1♀, Kaposgyarmat, 01. 05. 2009, 1♀ - Frequent. Hostplants: *Galium aparine* and *G. molugo*.

Heterarthrus vagans (Fallén, 1808): Kaposmérő, 23. 06. 1991, 1♀ - Sporadic. Hostplants: *Alnus* spp.

Metallus pumilus (Klug, 1816): Kaposmérő, 24. 08. 1991, 1♀ - Sporadic. Hostplant: *Rubus fruticosus* and *R. idaeus*.

Monophadnoides rubi (Harris, 1845) (syn. *Monophadnoides geniculatus* (Hartig, 1837)): Kaposmérő, 13. 04. 1991, 1♀ - Generally frequent but rare in the Zselic Hills. Hostplants: *Filipendula ulmaria*, *Geum* spp. and *Rubus* spp.

Monophadnoides ruficruris (Brullé, 1832): Zselickisfalud: village, towards Szilvásszentmárton, 11. 04. 2009, 1♀ - Sporadic. Hostplant: *Rubus fruticosus*.

Monophadnus pallescens (Gmelin, 1790): Kaposmérő, 13. 04. 1991, 1♀, 26. 04. 1991, 1♀, 05. 05. 1991, 1♀, 18. 04. 1992, 1♀, 02. 05. 1992, 2♀, 16. 05. 1992, 1♀, Zselickisfalud: Enyezdi barrack, 10. 04. 2009, 1♀, Zselickisfalud, village towards Szilvásszentmárton, 18. 04. 2009, 1♀, Zselickisfalud: ferns, towards Ropoly, 24. 04. 2009, 1♀, Zselicszentpál, 11. 04. 2009, 1♀, 18. 04. 2009, 1♀, 24. 04. 2009, 2♀, 03. 05. 2009, 3♀, Bószénfa: Ropoly: fishing pond (Ropoly: tó), 11. 04. 2009, 1♀, 24. 04. 2009, 4♀, Cserénfa: Könyökös, 24. 04. 2009, 1♀, Cserénfa, Friteleki forest (Fúrteleki-erdő), 25. 04. 2009, 1♀, Simonfa, fir forest, 25. 04. 2009, 1♀, Zselickislak, 01. 05. 2009, 3♀ - Common. Hostplants: *Ranunculus acris*, *R. repens*, *R. lanuginosus* and *Anemone nemorosa*.

Monophadnus spinolae (Klug, 1816): Kaposmérő, 12. 07. 1991, 1♀ - Sporadic. Hostplants: *Clematis vitalba* and *C. flammula*.

Paracharactus (Dicrostema) gracilicornis (Zaddach, 1859): Bárdudvarnok: Lipótfá: Cseberki forest (Cseberki-erdő), 05. 04. 2009, 1♀ - Rare. Hostplant: *Adoxa moschatellina*. New record for Hungary.

Parna tenella (Klug, 1816): Kaposmérő, Jókai str. 9., 07. 06. 1992, 1♀ - Rare. Larva makes mines in leaves of *Tilia platyphyllos* and *T. cordata x europaea*.

Periclista (Periclista) albiventris (Klug, 1816): Gyűrűfű, 20-22. 05. 2006, 2♀ - Sporadic. Hostplant unknown.

Stethomostus fuliginosus (Schrank, 1781): Kaposmérő, 07. 06. 1991, 1♂, 13. 07. 1991, 1♀, 24. 05. 1992, 1♀, Gyűrűfű, 20-22. 05. 2006, 1♂, Zselicszentpál, 18. 04. 2009, 1♀, Bószénfa: Ropoly: fishing pond (Ropoly: tó), 24. 04. 2009, 1♀, 01. 05. 2009, 1♂ - Frequent. Larva on *Ranunculus acris*, *R. repens* and *R. sceleratus*.

Tenthredininae

Aglaostigma (Astochus) aucupariae (Klug, 1817): Kaposmérő, 04. 04. 1991, 1♂, 13. 04. 1991, 1♂, 10. 05. 1991, 1♀, 2♂, 12. 05. 1991, 2♀, 1♂, 05. 04. 1992, 1♀, 1♂, Szenna: Denna forester's lodge (Dennai erdőszlak), 03. 04. 2009, 2♀, Zselickisfalud: Keleti Gyöngyös brook (Keleti Gyöngyös patak menti rét), 03. 04. 2009, 2♀, 1♂, Zselickisfalud: Enyezdi barrack, 03. 04. 2009, 2♀, 4♂, 10. 04. 2009, 6♂, Szenna: Denna meadow (Dennai rét), 04. 04. 2009, 1♀, 1♂, Zselickisfalud: towards Kardosfa, agr. field (Kardosfa felé, táblaszegély), 04. 04. 2009, 1♂, Szenna: village, 04. 04. 2009, 1♂, Bárdudvarnok: Lipótfá: Cseberki forest (Cseberki erdő), 05. 04. 2009, 1♂, Bánya: lake (tópart), 05. 04. 2009, 1♂, Kaposszentbenedek, 10. 04. 2009, 1♀, 1♂, Kaposgyarmat: olda railway (régí vasút), 10. 04. 2009, 2♀, 1♂, Bószénfa: Ropoly: fishing pond (tó), 11. 04. 2009, 1♀, 1♂, Kaposszerdahely, 12. 04. 2009, 1♀, Cserénfa: Irafai forest (Irafai-erdő), 12. 04. 2009, 1♂, Gálosfa: village, 24. 04. 2009, 1♂, Simonfa and Bószénfa (in lit. Roller and Haris, 2008) - Common. Larva on *Galium mollugo* and *G. boreale*.

Aglaostigma (Astochus) fulvipes (Scopoli, 1763): Kaposmérő, 05. 05. 1990, 1♀, 13. 04. 1991, 1♂, 05. 05. 1991, 1♂, 10. 05. 1991, 1♀, 12. 05. 1991, 1♀, Kaposfő, 19. 06. 1991, 1♀, 02. 05. 1992, 1♂,

Zselickisfalud, meadow towards Szilvásszentmárton, 11. 04. 2009, 1♀, 18. 04. 2009, 1♀, Gálosfa: village, 12. 04. 2009, 3♀, 1♂, Zselickisfalud: Eneyzdi barrack, 08. 05. 2009, 1♂, Böszénfa: Ropoly, meadow (rét), 18. 04. 2009, 1♀, Böszénfa: Ropoly, fishing pond (tópart), 18. 04. 2009, 1♂, Kaposzentbenedek, 19. 04. 2009, 1♂, 26. 04. 2009, 1♂, Zselicszentpál, 24. 04. 2009, 3♀, 1♂, 03. 05. 2009, 1♂, Simonfa: Tótyai-dűlő, 24. 04. 2009, 3♀, Zselickislak, 25. 04. 2009, 2♀, 3♂, 01. 05. 2009, 1♂, Zselickislak: Borgyan, 21. 04. 2007, 1♂, Simonfa, fir forest, 25. 04. 2009, 1♂, Bárdudvarnok: Lipótfá, forest at Kadarkút road, 26. 04. 2009, 3♂, Szenna: village, meadow towards Kaposvár, 26. 04. 2009, 1♀, 1♂ - Common. Larva on *Galium mollugo* and *G. verum*.

Macrophya (Macrophya) albicincta (Schrank, 1776): Kaposmérő, 06. 05. 1991, 1♀, 07. 05. 1991, 1♀, 10. 05. 1991, 4♀, 1♂, 12. 05. 1991, 2♂, 15. 06. 1991, 1♀, 02. 05. 1992, 1♀, 24. 05. 1992, 2♀, Cserénfa: Nádasdi forest (Nádasdi erdő), 29. 05. 1991, 3♀, Cserénfa: Irafai forest (Irafai-erdő), 12. 04. 2009, 1♂, Zselicszentpál, 18. 04. 2009, 2♀, 24. 04. 2009, 3♀, 3♂, 03. 05. 2009, 5♀, 09. 05. 2009, 2♀, Böszénfa: Ropoly, fishing pond (tó), 18. 04. 2009, 2♀, 2♂, 24. 04. 2009, 1♀, 3♂, 01. 05. 2009, 1♀, Zselickislak, 25. 04. 2009, 1♀, 1♂, 01. 05. 2009, 4♀, 2♂, 08. 05. 2009, 1♀, 1♂, 05. 05. 2009, 1♀, 23. 05. 2009, 1♀, Cserénfa, Fürteleki forest (Fürteleki-erdő), 25. 04. 2009, 1♂, Simonfa, fir forest (fenyves), 25. 04. 2009, 1♀, 03. 05. 2009, 1♀, 08. 05. 2009, 2♀, 09. 05. 2009, 1♂, Kaposzentbenedek, 26. 04. 2009, 2♀, Szenna: Denna meadow (Dennai-rét), 26. 04. 2009, 2♀, 1♂, Zselickisfalud, ferns, towards Ropoly (páfrányos, Ropoly felé), 01. 05. 2009, 1♀, Hajmás, 08. 05. 2009, 1♂ - Common. Hostplants: *Sambucus ebulus*, *S. nigra*, *S. racemosa*, *Valeriana officinalis* and *Viburnum opulus*.

Macrophya (Macrophya) annulata (Geoffroy, 1785): Kaposmérő, 31. 05. 1991, 1♂, 07. 06. 1991, 4♀, 1♂, 24. 05. 1992, 1♀, Zselickislak, 23. 05. 2009, 3♂, 20. 06. 2009, 1♀, Sántos, 23. 05. 2009, 1♂, Bánya, lake (tópart), 24. 05. 2009, 1♂. Gödre, Gyűrűfű (in lit. Roller and Haris, 2008) - Frequent. Larva on *Potentilla reptans*, *Origanum vulgare*, *Euphorbia*, *Rosa*, *Rubus* and *Sambucus* spp.

Macrophya (Macrophya) blanda (Fabricius, 1775): Terecsény, 09. 05. 2009, 1♂, Szentbalázs: Herceg-képe, 15. 05. 2009, 1♀, 6♂, Kaposzentbenedek, 10. 05. 2009, 3♂, Szenna: Denna meadow (Dennai-rét), 16. 05. 2009, 1♀ - Frequent. Hostplant unknown.

Macrophya (Macrophya) chrysur (Klug, 1817): Simonfa (in litt.: Roller and Haris, 2008) - Sporadic. Hostplant *Daucus carota*.

Macrophya (Macrophya) crassula (Klug, 1817): Kaposmérő, 24. 05. 1992, 1♀, 07. 06. 1992, 1♀, Kaposvár, young fir plantation at road 67 (fiatal fenyves a 67-es útnál), 09. 05. 2009, 2♂, Szenna: Denna meadow (Dennai-rét), 16. 05. 2009, 1♀ - Sporadic. Hostplant: *Sambucus ebulus*.

Macrophya (Macrophya) duodecimpunctata (Linné, 1758): Kaposmérő, 05. 05. 1990, 1♀, 26. 04. 1991, 1♀, 31. 05. 1991, 1♀, 07. 06. 1991, 2♀, 02. 05. 1992, 1♀, 16. 05. 1992, 2♀, 1♂, 24. 05. 1992, 2♀, 07. 06. 1992, 1♀, Kaposgyarmat, 15. 05. 2009, 1♀, Zselickislak, 25. 04. 2009, 1♂, 01. 05. 2009, 3♂, 30. 05. 2009, 2♀, Zselicszentpál, 03. 05. 2009, 1♂, Szentbalázs: Herceg-képe, 15. 05. 2009, 1♂, Bárdudvarnok: Lipótfá, forest at Kadarkút road (erdő a kadarkúti útelágazásánál), 16. 05. 2009, 1♂, Szenna: Denna meadow (Dennai-rét), 24. 05. 2009, 1♀, Gyűrűfű (in lit. Roller and Haris, 2008) - Common. Hostplants: *Graminae*, *Cyperaceae* and *Carex* spp.

Macrophya (Macrophya) erythrocnema A. Costa, 1859: Kaposmérő, 05. 05. 1991, 1♀, 10. 05. 1991, 1♀, Kaposgyarmat, 15. 05. 2009, 1♂, Kaposzentbenedek, 26. 04. 2009, 1♀ - Sporadic. Hostplant: *Knautia arvensis*.

Macrophya (Macrophya) militaris (Klug, 1817): Kaposmérő, 23. 06. 1991, 3♀, 13. 07. 1991, 1♀, 23. 06. 1992, 1♀, 27. 06. 1992, 1♀, 28. 06. 1992, 1♀ - Sporadic. Hostplant: *Rubus caesius*.

Macrophya (Macrophya) montana (Scopoli, 1763): Kaposmérő, 15. 06. 1991, 2♀, 23. 06. 1991, 2♀, 26. 06. 1991, 1♀, 29. 06. 1991, 1♀, 2♂, Zselickisfalud: Kardosfa, towards Millenium Memory Linden Forest (Milleniumi Emlékhársas felé), 02. 05. 2009, 4♀, 1♂, 10. 05. 2009, 2♀, 2♂, 30. 05. 2009, 1♀,

Simonfa, fir forest (fenyves), 08. 05. 2009, 1♂, Kaposvár, young fir plantation at road 67 (67-es út, fiatal fenyves), 09. 05. 2009, 1♀, Zselickislak, 15. 05. 2009, 1♀, 23. 05. 2009, 2♀, 2♂, 30. 05. 2009, 1♂, 06. 06. 2009, 1♀, Szentbalázs: Herceg-képe, 15. 05. 2009, 1♀, Kaposgyarmat, 15. 05. 2009, 1♂, Bárdudvarnok: Lipótfá, forest at Kadarkút road (erdő a kadarkúti leágazásnál), 16. 05. 2009, 1♀, Sántos, 23. 05. 2009, 1♀, 1♂, 06. 06. 2009, 2♀, 3♂, Szenna: Denna meadow (Dennai-rét), 30. 05. 2009, 1♀, 1♂, Gyűrűfű, Cserénfa (in lit. Roller and Haris, 2008) - Common. Hostplant: *Rubus caesius*.

Macrophya (Macrophya) postica (Brullé, 1832): Kaposmérő, 31. 07. 1990, 1♀, 25. 06. 1991, 1♀, 24. 05. 1992, 1♀, 07. 06. 1992, 1♀, 15. 06. 1992, 3♂, Zselickislak, 23. 05. 2009, 1♂, 06. 06. 2009, 1♂, Szenna, village towards Kaposvár, 24. 05. 2009, 1♀, Sántos, 06. 06. 2009, 1♀ - Frequent. Hostplant unknown.

Macrophya (Macrophya) recognata Zombori, 1979: Kaposmérő, 05. 05. 1991, 1♀, 31. 05. 1991, 1♀, 31. 07. 1991, 1♀, 10. 05. 1992, 1♀, 2♂, 02. 05. 1992, 1♀, 07. 06. 1992, 1♀, 04. 08. 1992, 1♂, Kaposvár: Zaranyi forest (Zaranyi-erdő), 23. 07. 1991, 1♀, 4♂, Szenna: Denna meadow (Dennai-rét), 26. 04. 2009, 1♂, 16. 05. 2009, 1♀, Zselicszentpál, 09. 05. 2009, 1♀ - Frequent. Hostplant unknown.

Macrophya (Macrophya) ribis (Schrank, 1781): Kaposmérő, 31. 07. 1990, 2♀, 3♂, 14. 07. 1991, 1♀, 1♂, 19. 07. 1991, 1♀, 31. 07. 1991, 1♀, 01. 08. 1991, 1♀, 17. 06. 1992, 1♀ - Frequent. Larva on *Sambucus nigra*.

Macrophya (Macrophya) rufipes (Linné, 1758): Kaposvár, 09. 10. 1989, 1♀, Kaposvár: Zaranyi forest (Zaranyi-erdő), 23. 07. 1991, 1♀, 1♂, Zselickislak, 12. 07. 2009, 1♀ - Sporadic. Larva on *Agrimonia eupatoria* and *Vitis vinifera*.

Macrophya (Macrophya) sanguinolenta (Gmelin, 1790): Kaposmérő, 15. 06. 1991, 1♀, 02. 05. 1992, 1♀, Kaposgyarmat, 01. 05. 2009, 1♀ - Sporadic. Larva on *Galeopsis* spp., *Senecio* spp. and *Veronica* spp.

Macrophya (Macrophya) tenella Mocsáry, 1881: Zselickislak, 01. 05. 2009, 1♂, Szenna: Denna meadow (Dennai-rét), 16. 05. 2009, 1♀ - Rare. Hostplant: *Geranium* spp.

Pachyprotasis antennata (Klug, 1817): Kaposmérő, 07. 06. 1992, 1♀, 23. 06. 1992, 1♀ - Sporadic. Larva on *Filipendula ulmaria* and *Fraxinus* spp.

Pachyprotasis rapae (Linné, 1767): Kaposmérő, 28. 07. 1990, 1♀, 10. 08. 1990, 2♀, 24. 08. 1991, 1♀, 12. 05. 1991, 1♀, Bószénfa, 26. 06. 1991, 1♀, Cserénfa: Nádasdi forest (Nádasdi-erdő), 29. 05. 1991, 1♀, Zselicszentpál, 18. 04. 2009, 1♂, 24. 04. 2009, 1♀, Bószénfa: Ropoly, meadow (rét), 18. 04. 2009, 1♂, Bószénfa: Ropoly, fishing pond (tó), 18. 04. 2009, 1♂, 01. 05. 2009, 1♀, Gálosfa: village, 24. 04. 2009, 2♀, Cserénfa, Fürteleki forest (Fürteleki-erdő), 25. 04. 2009, 1♀, Zselickislak, 08. 05. 2009, 1♀, 15. 05. 2009, 1♀, 23. 05. 2009, 1♀, Zselickisfalud, ferns towards Ropoly (páfrányos), 09. 05. 2009, 1♀, Cserénfa, forestry road North to the village (fálutól északra erdei út), 23. 05. 2009, 1♂, Szenna: Denna meadow (Dennai-rét), 24. 05. 2009, 1♀, Gyűrűfű (in lit. Roller and Haris, 2008) - Common. Hostplants: *Solanum tuberosum*, *Pedicularis palustris*, *Angelica sylvestris*, *Veronica beccabunga*, *Betonica officinalis*, *Corylus avellana*, *Salix caprea*, *Fraxinus excelsior*, *Tussilago farfara*, *Symphoricarpos albus*, *Scrophularia*, *Solidago*, *Verbascum*, *Origanum*, *Atropa*, *Sarothamnus*, *Senecio*, *Polygonum*, *Aspidium*, *Epilobium*, *Hypericum*, *Galeopsis*, *Mentha*, *Polystichum*, *Plantago*, *Quercus* and *Stachys* spp.

Rhogogaster (Cytisogaster) picta (Klug, 1817): Kaposvár (in litt. Roller and Haris, 2008), Kaposgyarmat, 15. 05. 2009, 1♀ - Sporadic. *Cytisus scoparius*, *C. nigricans*, *Genista germanica* and *G. tinctoria*.

Rhogogaster (Rhogogaster) chlorosoma (Benson, 1943): Kaposmérő, 19. 07. 1991, 1♀, 31. 07. 1991, 1♀, 24. 05. 1992, 1♀, 23. 06. 1992, 1♂, Gödre, 17. 06. 2006, 1♀, Zselickislak, 08. 05. 2009, 1♂, 23. 05. 2009, 1♂, Szenna: Denna meadow, (Dennai-rét), 24. 05. 2009, 1♀, 30. 05. 2009, 3♂ - Frequent.

Hostplants: *Pteridium aquilinum*, *Alnus glutinosa*, *Circaea*, *Prunus* spp., *Ranunculus* spp., *Rosa* spp., *Salix* alba, *S. purpurea*, *Stellaria* spp., *Filipendula ulmaria*, *Populus tremula*, *Padus* spp., *Betula* spp., *Corylus avellana* and *Sorbus* spp.

Rhogogaster (Rhogogaster) viridis (Linné, 1758): Kaposmérő, 24. 05. 1992, 1♀, Zselicszentpál, 24. 04. 2009, 1♂, Gyűrűfű (in lit. Roller and Haris) - Frequent. *Chamnaerion angustifolium*, *Salix* spp., *Populus* spp., *Alnus* spp., *Quercus* spp., *Filipendula* spp., *Stellaria* spp. and *Circaea* spp.

Sciapteryx consobrina (Klug, 1816): Kaposmérő, 13. 04. 1991, 1♂, 02. 05. 1992, 2♀, 05. 04. 1992, 1♀, Kaposszentbenedek, 05. 04. 2009, 3♀, 1♂, 10. 04. 2009, 3♀, 19. 04. 2009, 1♀, 1♂, Bárdudvarnok: Lipótfá: Cseberki forest (Cseberki-erdő), 05. 04. 2009, 3♀, 2♂, Kaposgyarmat: old railway (régí vasút), 10. 04. 2009, 1♂, Böszénfa: Ropoly, fishing pond (tó), 11. 04. 2009, 2♀, 24. 04. 2009, 3♀, 1♂, 10. 05. 2009, 2♀, 2♂, Zselicszentpál, 18. 04. 2009, 2♀, Cserénfa: Irafai forest (Irafai-erdő), 24. 04. 2009, 1♀, Cserénfa, Fürteleki forest (Fürteleki-erdő), 25. 04. 2009, 1♀, Szenna: Denna meadow (Dennai-rét), 26. 04. 2009, 1♀, Simonfa, fir forest (fenyves), 03. 05. 2009, 2♀, Kaposfő, Böszénfa, Bárdudvarnok (in lit. ROLLER and HARIS 2008) - Common. Larval hosts: *Adoxa* spp., *Anemone* spp. and *Ranunculus ficaria*.

Sciapteryx costalis (Fabricius, 1775): Kaposmérő, 13. 04. 1991, 1♀, 26. 04. 1991, 1♀, 3♂, 05. 04. 1992, 1♀, 25. 04. 1992, 2♂, Kaposújlak, 26. 04. 1991, 1♂, Zselickisfalud: Keleti Gyöngyös brook, meadow (Keleti Gyöngyös-patak, rét), 03. 04. 2009, 1♂, Zselickisfalud, agr. field (táblaszegély), 04. 04. 2009, 2♂, Szenna, village towards Kaposvár (falu végén, rét), 12. 04. 2009, 2♀ - Frequent. Hostplant: *Ranunculus acris*.

Tenthredo (Zonuledo) amoena Gravenhorst, 1807: Kaposmérő, 10. 08. 1990, 1♀ - Sporadic. Hostplants: *Hypericum perforatum* and *H. maculatum*.

Tenthredo (Tenthredella) atra Linné, 1758: Kaposmérő, 10. 05. 1991, 1♀, Gyűrűfű, 21. 05. 2006, 1♀, Böszénfa: Ropoly, (meadow) rét, 18. 04. 2009, 1♀, Böszénfa: Ropoly, (fishing pond) tópart, 24. 04. 2009, 1♀, Szenna: (Denna meadow) Dennai-rét, 26. 04. 2009, 1♀, 16. 05. 2009, 1♀, Zselickislak, 25. 04. 2009, 1♂, 01. 05. 2009, 5♀, 2♂, 08. 05. 2009, 1♂, 15. 05. 2009, 2♀, 23. 05. 2009, 3♀, Zselicszentpál, 03. 05. 2009, 2♀, 09. 05. 2009, 3♀ - Frequent. Larval hosts: *Lamium*, *Mentha*, *Plantago*, *Vicia*, *Ranunculus*, *Scabiosa*, *Brassica* and *Solanum* spp.

Tenthredo (Cephaledo) bifasciata rossii (Panzer, 1804): Kaposmérő, 22. 07. 1990, 1♀, 04. 08. 1990, 1♀, 19. 07. 1991, 1♀, 25. 07. 1991, 1♂, 31. 07. 1991, 2♀, 01. 08. 1991, 1♂, 09. 08. 1991, 3♀, 12. 08. 1991, 1♀, Kaposvár: Zaranyi forest (Zaranyi-erdő), 23. 07. 1991, 1♀, Kaposgyarmat, 18. 07. 2009, 1♀, 1♂ - Frequent. Hostplants: *Scrophularia* and *Verbascum* spp.

Tenthredo (Cephaledo) bifasciata violacea (Ed. André, 1881): Gödrekeresztúr, village (belterület), 17. 06. 2006, 1♂, Kaposgyarmat, 18. 07. 2009, 1♀, Zselickislak, 12. 07. 2009, 1♀, 30. 05. 2009, 1♂, Kaposszentbenedek, 12. 07. 2009, 1♀, Szenna: (Denna meadow) Dennai-rét, 24. 05. 2009, 1♀, Szenna, village towards Kaposvár, pasture, 24. 05. 2009, 1♀, Hajmás, 08. 05. 2009, 1♀ - Frequent. Hostplant unknown.

Tenthredo (Endotethryx) campestris Linné, 1758: Kaposmérő, 31. 07. 1990, 1♀, 15. 06. 1991, 1♀, 31. 07. 1991, 1♀, 09. 08. 1991, 2♀, 1♂, Kaposvár: Szabadság-park, 17. 06. 1987, 1♀, Zselickislak, 01. 05. 2009, 1♂, 08. 05. 2009, 1♂, 15. 05. 2009, 2♂, 23. 05. 2009, 1♀, 1♂, Sántos, 23. 05. 2009, 1♀, 1♂, Szentbalázs: Herceg-képe, 15. 05. 2009, 1♂, Szenna: Denna meadow (Dennai-rét), 24. 05. 2009, 1♂ - Frequent. Hostplant: *Aegopodium podagraria*.

Tenthredo (Zonuledo) distinguenda (Stein, 1885): Kaposszentbenedek, 26. 04. 2009, 1♀, Böszénfa: Ropoly, fishing pond (tó), 01. 05. 2009, 1♀, Szenna: Denna meadow (Dennai-rét), 24. 05. 2009, 1♂, Zselickislak, 08. 05. 2009, 1♀, Gyűrűfű (in lit. Roller and Haris, 2008) - Sporadic. Hostplant unknown.

Tenthredo (Cephaledo) excellens (Konow, 1886): Kaposmérő, 15. 06. 1991, 1♀, 07. 06. 1992, 1♀, Zselickislak, 30. 05. 2009, 1♀ - Sporadic. Hostplant unknown.

Tenthredo (Tenthredella) livida Linné, 1758: Kaposfő (in litt. ROLLER and HARIS 2008) - Frequent, but rare in the Zselicség. Hostplants: *Epilobium* spp., *Rosa* spp., *Sorbus aucuparia*, *Salix* spp., *Corylus avellana*, *Corpinus betulus*, *Plantago* spp., *Fraxinus excelsior*, *Viburnum album*, *Lonicera* spp., *Symphoricarpos alba*, *Arctium* spp., *Lamium album*, *Melissa officinalis*, *Pteridium aquilinum* and *Athyrium filix-femina*.

Tenthredo (Tenthredo) marginella Fabricius, 1793: Kaposmérő, 12. 08. 1991, 1♀, 26. 08. 1991, 1♀ - Sporadic. Hostplants: *Mentha* and *Ocimum* spp.

Tenthredo (Eurogaster) mesomela Linné, 1758: Cserénfa: Nádasdi forest (Nádasdi erdő), 29. 05. 1991, 1♀, Kaposvár: Zaranyi forest (Zaranyi erdő), 19. 06. 1989, 1♀, Böszénfa, 26. 06. 1991, 4♀, Kaposmérő, 02. 05. 1992, 1♀, Böszénfa: Ropoly, fishing pond (tópart), 01. 05. 2009, 1♂, Sántos, 23. 05. 2009, 1♀, 06. 06. 2009, 2♀ - Frequent. Larval hosts: *Polygonum persicaria*, *Arctium lappa*, *Heracleum* spp., *Ranunculus* spp., *Epilobium* spp., *Rumex* spp., *Salix* spp., *Veronica* sp., *Tussilago* spp., *Petasites* sp., *Senecio* sp., *Solidago* sp., and *Stachys* spp.

Tenthredo (Tenthredo) notha Klug, 1817: Kaposmérő, 10. 08. 1990, 1♀, 11. 08. 1990, 1♀, 12. 08. 1990, 1♀, 20. 08. 1990, 1♂, 01. 08. 1991, 1♀, 24. 08. 1991, 1♀, Gálosfa: Vörösalma pond (tó a vadászháznál), 10. 08. 2009, 4♀, 1♂, 15. 08. 2009, 3♂, Böszénfa: Ropoly, 15. 08. 2009, 1♀ - Frequent. Larva on *Trifolium repens*, *T. pretense* and *Vicia cracca*.

Tenthredo (Tenthredo) omissa (Förster, 1844): Kaposmérő, 19. 07. 1990, 1♀, 28. 07. 1990, 1♀, 10. 08. 1990, 1♀, 11. 08. 1990, 1♀, 1♂, 15. 08. 1990, 1♂, 01. 08. 1991, 1♀, Kaposvár (in litt. Roller and Haris, 2008) - Frequent. Hostplants: *Plantago media* and *P. lanceolata*.

Tenthredo (Tenthredo) scrophulariae Linné, 1758: Kaposmérő, 07. 06. 1992, 2♀, Szenna (In litt. ROLLER and HARIS 2008) - Sporadic. Larva on *Scrophularia* and *Verbascum* spp.

Tenthredo (Tenthredella) solitaria Scopoli, 1763: Gyűrűfű, 21. 05. 2006, 4♀, 1♂ - Montane species, sporadic in Hungary. Larva on *Euphorbia cyparissius*.

Tenthredo (Temuledo) temula Scopoli, 1763: Kaposvár: Zaranyi forest (Zaranyi-erdő), 15. 05. 1987, 1♀, Kaposmérő, 02. 05. 1992, 1♂, 15. 06. 1992, 1♀, Zselickisfalud: Pölöske meadow (Pölöske rét), 13. 05. 1997, 1♀, Zselickislak, 25. 04. 2009, 1♀, 01. 05. 2009, 2♂, 15. 05. 2009, 2♀, 3♂, 23. 05. 2009, 1♂, 30. 05. 2009, 1♂, Zselicszentpál, 03. 05. 2009, 2♀, 4♂, 09. 05. 2009, 1♀, 2♂, Szentbalázs: Herceg-képe, 15. 05. 2009, 1♂, Kaposgyarmat, 05. 05. 2009, 2♀, Szenna: Denna meadow (Dennai-rét), 16. 05. 2009, 1♂, 24. 05. 2009, 1♀, Hajmás, 23. 05. 2009, 1♀, Sántos, 23. 05. 2009, 1♀, 1♂, Szenna: meadow towards Kaposvár (falu végén rét), 24. 05. 2009, 1♂, Kaposfő (in litt. Roller and Haris, 2008) - Common. Larva on *Ligustrum* and *Origanum* spp.

Tenthredo (Tenthredo) thompsoni (Curtis, 1839): Kaposmérő, 24. 08. 1990, 1♂, 09. 08. 1991, 1♀, 10. 08. 1991, 1♀, 1♂, 12. 08. 1991, 1♀, 31. 08. 1991, 1♀, Kaposvár: Toponár: built in area (belterület): 27. 08. 1996, 1♀, Lad, 18. 08. 1990, 1♀, Kaposszentbenedek, 09. 08. 2009, 2♀ - Frequent. Hostplant: *Pimpinella major*.

Tenthredo (Tenthredo) vespa Retzius, 1783: Kaposmérő, 31. 07. 1990, 1♂, 04. 08. 1990, 1♀, 10. 08. 1990, 2♂, 11. 08. 1990, 3♀, 20. 08. 1990, 1♂, 09. 08. 1991, 2♀, 3♂, 12. 08. 1991, 1♀, 1♂, Kaposvár: Zaranyi forest (Zaranyi-erdő): 19. 06. 1♀, 1♂, Kaposszentbenedek, 09. 08. 2009, 1♀, Simonfa: fir forest (fenyves), 09. 08. 2009, 2♂, Zselickisfalud: Kardosfa, 15. 08. 2009, 1♀ - Frequent. Hostplants: *Lonicera caprifolium*, *Syringa vulgaris*, *Viburnum opulus*, *Fraxinus excelsior*, *Jasminum officinale*, *Rosa*, *Spiraea*, *Acer platanoides*, *Ligustrum vulgare*, *Symphoricarpos albus*, *S. alba*.

Tenthredo (Maculedo) vespiformis Schrank, 1781: Kaposgyarmat, 15. 05. 2009, 1♂ - Rare in Hungary. Hostplant unknown.

Tenthredo (Zonuledo) zonula Klug, 1817: Gyűrűfű, 21. 05. 2006, 1♂, Zselickisfalud: towards Millenium Memory Linden Forest (Milleniumi Emlékhársas felé), 02. 05. 2009, 2♀, Kaposvár, young fir plantation at road 67 (fenyves a 67-es út oldalán), 09. 05. 2009, 1♂, Szenna: Denna meadow (Dennai-rét), 24. 05. 2009, 1♀, Gödre (in lit. Roller and Haris, 2008) - Frequent. Hostplant: *Hypericum perforatum*.

Tenthredopsis friesei (Konow, 1884): Kaposmérő, 16. 05. 1992, 2♀, 24. 05. 1992, 1♀, Gyűrűfű, 21. 05. 2006, 2♀, Szentbalázs: Herceg-képe, 15. 05. 2009, 1♂, Zselicszentpál, 16. 05. 2009, 1♂, Zselickislak, 23. 05. 2009, 1♀, 3♂, 30. 05. 2009, 2♀, Cserénfa: Nádasdi forest (Nádasdi-erdő), 29. 05. 1991, 1♀, Hajmás, 23. 05. 2009, 1♀ - Frequent. Hostplants: *Holcus mollis* and other *Graminae*.

Tenthredopsis lactiflua (Klug, 1817): Kaposmérő, 26. 04. 1991, 1♀, Kaposszentbenedek, 26. 04. 2009, 2♀ - Sporadic. Hostplant unknown.

Tenthredopsis litterata (Geoffroy, 1785): Gyűrűfű, 21. 05. 2006, 1♀, Kaposvár: Zaranyi forest (Zaranyi-erdő), 19. 05. 1989, 1♀, Kaposmérő, 31. 05. 1991, 1♂, Zselickislak, 23. 05. 2009, 2♀, 30. 05. 2009, 1♀, Simonfa, fir forest (fenyves), 08. 05. 2009, 1♀ - Frequent. Larva on *Agrostis*, *Dactylis* and *Calamagrostis* spp.

Tenthredopsis nassata (Linné, 1767): Kaposmérő, 31. 05. 1991, 1♀, 23. 06. 1991, 1♂, 16. 05. 1992, 1♀, 1♂, 24. 05. 1992, 1♀, 24. 05. 1992, 1♀, 07. 06. 1992, 1♀, Kaposvár: Zaranyi forest (Zaranyi-erdő), 19. 06. 1989, 1♀, Gyűrűfű, 21. 05. 2009, 1♀, Sántos, 23. 05. 2009, 2♀, Hajmás, 23. 05. 2009, 1♀, Zselickislak, 23. 05. 2009, 2♀, 30. 05. 2009, 1♀, Bószénfa: Ropoly, fishing pond (tó), 08. 05. 2009, 1♀ - Frequent. Hostplants: *Dactylis glomerata*, *Deschampsia cespitosa*, *D. calamagrostis*, *Flexuosa* spp., *Holcus* spp., *Lolium perenne*, *Agropyron* spp., *Carex* spp., *Anthriscus silvestris* and *Artemisia* spp.

Tenthredopsis ornata (Serville, 1823) (syn. *Tenthredopsis excisa* (C. G. Thomson, 1870)): Kaposgyarmat, 01. 05. 2009, 1♂, 15. 05. 2009, 1♀ - Sporadic. Larva on *Brachypodium sylvaticum*.

Tenthredopsis scutellaris (Fabricius, 1804): Zselickislak, 06. 06. 2009, 1♀, Gyűrűfű, 21. 05. 2006, 1♀ - Sporadic. Larva on *Poa pratense*, *Festuca elatior*, *Dactylis glomerata* and *Elytrigia repens*.

Tenthredopsis sordida (Klug, 1817): Kaposmérő, 28. 04. 1991, 1♂, 10. 05. 1991, 1♀, 1♂, 12. 05. 1991, 1♀, 07. 06. 1992, 1♂, 15. 06. 1992, 1♂, Zselickislak, 25. 04. 2009, 2♂, 01. 05. 2009, 1♀, 2♂, 08. 05. 2009, 2♀, 15. 05. 2009, 1♀, 23. 05. 2009, 1♀, 06. 06. 2009, 1♂, Zselickisfalud: Enyezdí barracks, 08. 05. 2009, 2♂, Kaposgyarmat, 15. 05. 2009, 1♀, Zselicszentpál, 6. 05. 2009, 2♀, Gyűrűfű (in lit. ROLLER and HARIS 2008) - Frequent. Larva on *Arrhenatherum elatius*, *Lolium perene*, *Carex* spp., *Calamagrostis* sp. and *Dactylis glomerata*.

Tenthredopsis stigma (Fabricius, 1798): Kaposmérő, 26. 04. 1991, 1♂, 28. 04. 1991, 1♀, 05. 05. 1991, 1♀, 1♂, Simonfa: Bagó hill (Bagó-hegy), 09. 05. 1987, 1♀, Simonfa, Tótyai-dűlő. 25. 04. 2009, ♀, Szenna, meadow towards Kaposvár, 24. 05. 2009, 1♀, Gyűrűfű (in lit. ROLLER and HARIS 2008) - Frequent. Hostplant: *Triticum intermedium*.

Tenthredopsis tessellata (Klug, 1817): Kaposmérő, 02. 05. 1992, 1♀, 10. 05. 1991, 1♀ - Sporadic. Larva on *Deschampsia*, *Dactylis*, *Aira* and *Lolium* spp.

Nematinae

Euura (Euura) atra (Jurine, 1807): Kaposmérő, 02. 05. 1992, 2♀, 16. 05. 1992, 1♀, 24. 05. 1992, 1♀, Zselickisfalud: towards Szilvásszentmárton, 11. 04. 2009, 1♀ - Frequent. *Salix* spp.

Cladius (Cladius) pectinicornis (Geoffroy, 1785): Kaposvár: Zaranyi forest (Zaranyi-erdő), 23. 07. 1991, 1♀, Zselicszentpál, 24. 04. 2009, 1♀, 09. 05. 2009, 1♀ - Frequent. Larval hosts: *Fragaria*, *Rosa*, *Filipendula* spp., *Poterium sanguisorba*, *Lamium galeobdolon* and *Comarum palustre*.

Cladius (Priophorus) brullei (Dahlbom, 1835): Kaposmérő, 15. 06. 1992, 1♀ - Frequent. Larva on *Rubus* spp.

Craesus alniastri (Scharfenberg, 1805) syn.: (*Craesus varus* (Villaret, 1832)): Kaposmérő, 27. 06. 1992, 1♀ - Sporadic. Larva on *Alnus* spp.

Endelomya aethiops (Fabricius, 1781): Szenna: Denna meadow (Dennai-rét), 26. 04. 2009, 1♀, Zselickislak, 01. 05. 2009, 1♀ - Sporadic. Larva on *Rosa* spp.

Hoplocampa fulvicornis (Panzer, 1801) (syn.: *Hoplocampa rutilicornis* (Klug, 1816)): Zselickisfalud: Enyezdi barrack, 03. 04. 2009, 1♀, 10. 04. 2009, 1♀, Szenna: Denna meadow (Dennai-rét), 10. 04. 2009, 1♀ - Sporadic. Larva on *Prunus spinosa*.

Hoplocampa minuta (Christ, 1791): Kaposmérő, 16. 04. 1991, 1♀ - Frequent. Larva on *Prunus domestica*, *P. armeniaca*, *P. instita*, *P. avium* and *P. spinosa*.

Mesoneura opaca (Fabricius, 1775): Zselickisfalud, towards Ropoly 2 km from road 67 (ropolyi út, 2 km a 67-es úttól), 11. 04. 2009, 1♀ - Sporadic. Larva on *Quercus robur*.

Nematinus luteus (Panzer, 1804): Kaposmérő, 27. 06. 1992, 1♀, 28. 06. 1992, 1♀ - Sporadic. Larva on *Alnus* spp.

Nematinus steini Blank, 1998: Bószénfa: Ropoly, fishing pond (tó), 01. 05. 2009, 1♀, 1♂ - Sporadic. Larva on *Alnus* spp.

Nematus (Pteronidea) bergmanni Dahlbom, 1835: Kaposmérő, 19. 07. 1991, 2♀, 1♂, 16. 05. 1992, 1♀ - Frequent. Hostplant: *Salix*.

Nematus (Pteronidea) bipartitus Serville, 1823: Kaposmérő, 06. 07. 1991, 1♀ - Sporadic. Larva on *Salix viminalis* and *S. repens*, occasionally on *Populus* spp.

Nematus (Nematus) lucidus (Panzer, 1801): Szenna: Denna meadow (Dennai-rét), 26. 04. 2009, 1♀ - Sporadic, locally frequent. Larva on *Crataegus* and *Prunus spinosa*.

Nematus (Pteronidea) melanaspis Hartig, 1840: Kaposmérő, 25. 07. 1991, 1♀ - Sporadic. Hostplants: *Salix*, *Populus* and *Betula* spp.

Nematus (Pteronidea) myosotidis (Fabricius, 1804): Kaposmérő, 16. 05. 1992, 1♀, Zselicszentpál, 18. 04. 2009, 1♀, 24. 04. 2009, 1♂, Bószénfa: Ropoly, fishing pond (tó), 18. 04. 2009, 1♂, Gálosfa: village meadow (belterületi rét), 24. 04. 2009, 1♂, Zselickislak, 01. 05. 2009, 1♀, Zselickisfalud: towards Ropoly 4 km from road 67 (ropolyi erdei út, 4 km a 67-es úttól), 08. 05. 2009, 1♂, Gyűrűfű (in lit. ROLLER and HARIS 2008) - Common. Larval hosts: *Onobrychis* and *Trifolium* spp.

Nematus (Pteronidea) oligospilus Förster, 1854: Kaposmérő, 25. 07. 1991, 1♀, 22. 07. 1990, 1♀ - Frequent. Hostplants: *Salix* spp.

Nematus (Pteronidea) silvestris Cameron, 1884: Kaposmérő, 27. 06. 1992, 1♀ - Sporadic. Hostplant: *Salix pentandra*.

Nematus (Pteronidea) tibialis Newman, 1837: Kaposmérő, 21. 07. 1991, 1♀, Kaposzentbenedek, 10. 05. 2009, 1♀, Kaposvár (in lit. Roller and Haris, 2008) - Frequent. Larva on *Robinia pseudacacia*.

Pachynematus (Polynematus) annulatus (Gimmerthal, 1834): Zselickislak, 01. 05. 2009, 1♀ - Sporadic. Larva on *Rumex* spp.

Pachynematus (Pachynematus) clitellatus (Serville, 1823): Kaposmérő, 30. 04. 1990, 1♀ (ex larva), Zselicszentpál, 24. 04. 2009, 1♀ - Frequent. Larval hosts: *Graminae*, *Carex* and *Juncus* spp.

Pachynematus (Pachynematus) fallax (Serville, 1823) (syn.: *Pachynematus xanthocarpus* (Hartig, 1840)): Kaposmérő, 26. 04. 1991, 1♀ - Frequent. Larva on *Graminae*.

Phyllocolpa leucaspis (Tischbein, 1846): Simonfa, forestry road towards Kaposgyarmat, 03. 05. 2009, 1♀ - Frequent. Larval hosts: *Salix phylicifolia*, *S. aurita*, *S. caprea* and *S. cinerea*.

Phyllocolpa leucosticta (Hartig, 1837): Zselicszentpál, 03. 05. 2009, 1♀ - Frequent. *Salix aurita*, *S. caprea*, *S. atrocinerea* and *S. cinerea*.

Pikonema scutellatum (Hartig, 1837): Zselickislak, 08. 05. 2009, 1♂ - Rare in Hungary. Hostplants: *Picea* spp.

Pontania (Pontania) proxima (Serville, 1823): Szenna: Denna meadow (Dennai-rét), 21. 06. 2009, 8 pcs. galls - Frequent, larva on *Salix fragilis* and *S. alba*.

Pontania (Eupontania) viminalis (Linné, 1758): Zselickislak, 20. 06. 2009, 5 pcs. galls - Sporadic. Larva on *Salix purpurea*. *Pristiphora (Pristiphora) armata* (C. G. Thomson, 1863): Kaposvár: Zaranyi forest (Zaranyi-erdő), 09. 06. 1989, 1♂, Kaposfő, 18. 05. 1989, 1♂, Kaposmérő, 31. 07. 1991, 1♀, 09. 08. 1991, 1♀ - Frequent. Larva on *Crataegus* spp.

Pristiphora (Pristiphora) bifida (Hellén, 1947): Szenna: Denna meadow (Dennai-rét), 26. 04. 2009, 1♀, Szentbalázs: Herceg-képe, 15. 05. 2009, 1♀ - Sporadic. Larva on *Salix* spp.

Pristiphora (Lygaeonematus) compressa (Hartig, 1837): Simonfa: fir forest (fenyves), 09. 05. 2009, 1♀ - Sporadic. Larva on *Picea* spp.

Pristiphora (Pristiphora) conjugata (Dahlbom, 1835): Kaposmérő, 03. 07. 1990, 1♀, Kaposfő, 09. 06. 1991, 1♀ - Sporadic. Larva on *Populus tremulus* and *Salix fragilis*.

Pristiphora (Pristiphora) insularis Rohwer, 1910: Zselickislak, 01. 05. 2009, 1♂ - Sporadic. Larva on *Rosa* spp.

Pristiphora (Oligonematus) laricis (Hartig, 1837): Lad: Kótai forest (Kótai-erdő), 04. 05. 1994, 1♀ - Sporadic. Hostplants: *Larix* spp.

Pristiphora (Lygaeotus) pallidiventris (Fallén, 1808): Kaposmérő, 28. 04. 1991, 1♀ - Frequent. Larva on *Geum*, *Potentilla*, *Rubus* and *Filipendula* spp.

Pseudodineura fuscula (Klug, 1816): Kaposmérő, 23. 03. 1991, 2♀, 04. 04. 1991, 1♀ - Sporadic. Larval hosts: *Ranunculus* spp.

Discussion

The recorded total of 192 species is very high, although the 3 years collection around Kaposmérő and further 1 year collection in the Northern Zselic are not adequate to assess the real species richness. Compared to other faunistic investigations, the average species richness of a single territory, depending on its size, ranges from 80 to 150 species. The Bakony Mountains has the highest diversity with 269 species, the next is the Bükk Mts. with 231 species, then the Zselic Hills in third place with its recorded 192 species.

These 192 species represent 33% of the Hungarian sawfly fauna (589 species in total) and 25% of that of the Carpathian Basin (782 species in total).

Arge melanochra (Gmelin, 1790), *Athalia rosae* (Linné, 1758), *Dolerus* (*Poodolerus*) *nigratus* (O. F. Müller, 1776), *Eutomostethus ephippium* (Panzer, 1798), *Aglaostigma* (*Astochus*) *aucupariae* (Klug, 1817), *Aglaostigma* (*Astochus*) *fulvipes* (Scopoli, 1763), *Macrophya* (*Macrophya*) *albicincta* (Schränk, 1776), *Macrophya* (*Macrophya*) *montana* (Scopoli, 1763), *Pachyprotasis rapae* (Linné, 1767) and *Tenthredo* (*Temuledo*) *temula* Scopoli, 1763 are the dominant species. They amount to more than 50% of the total collected material.

The rarest species are discussed below.

Pamphilius ignymontiensis Lacourt, 1973 (Fig. 10) - Recently separated from the closely related *Pamphilius aurantiacus* (Giraud, 1857) (ACHTERBERG and AARTSEN 1986). The species is distinguished by the smooth vertex and black lateral fields of frons in *P. ignymontiensis*, and punctured vertex, and orange lateral fields in *P. aurantiacus*. In the Carpathian Basin, it is recorded from Borosjenő and the Retyezát Mountains (ZOMBORI 2003), furthermore we have data from Budapest: Gellérthegy, Kalocsa, Szilvásvárad and Nagykovácsi (ROLLER and HARIS 2008). In Europe, we have records from Austria, from the former Yugoslavia and Italy (ACHTERBERG and AARTSEN 1986). Hostplants are *Acer platanoides* and *Acer campestre*.

Calameuta (*Calameuta*) *punctata* (Klug, 1803) - Rare species, although it was captured in several places in the Carpathian Basin. We know it from Budapest, Szatmár, Pásztó, Ohat, Újszentmargita, Alsócsákány, Látrány, Nagyvárad, Peleszántó, Mehádia, Zilah, Perkupa, Marcali: Boronka, Hubó, Körmöcbánya and Szentistvánkút (MOCSÁRY, 1900, ZOMBORI 1979, 1981, 1996, HARIS 2003, ROLLER and HARIS 2008, ZILAH-KISS 1904).

Aproceros leucopoda Takeuchi, 1939 (Fig. 11) - Mr. Thomasz Huflejt and Dr. Stephan Blank helped and advised the author. The identification is dubious in TOGASHI (1968). In colour, this species runs to *A. umbricola* Malaise, in the shape of scutellum to *A. leucopoda* Takeuchi. Stephan Blank compared the European specimens to the types and found they belong to *A. leucopoda* Tak. In interesting way, the Polish specimens are typical *A. leucopoda* and well agree those described in Togashi's paper. Probably the fotoperiodic effect influence the morphology of the spring and summer generation. For generic identification, the generic revision of Koch is useful (KOCH 1988). Its known hostplant is Manchurian elm (*Ulmus laciniata*). In Szenna, where I captured these 2♀ (Fig 5), *Ulmus minor*, *U. scabra* and *U. laevis* grow. The present specimens are not the first Hungarian record! The earliest Hungarian records (few years older than the present record) will soon be separately published by Blank and Vékony. These records are not discussed here, we

should wait for the publication of Dr. Blank and Dr. Vékony. From Europe, Mr. Thomasz Huflejt identified this species firstly, in 2003, using the keys of Togashi, 1968 and Lelej and Taeger, 1997: "Forest District Stale near Tarnobrzeg, Poland, 11.6.2003, 7 ♀, captured at the margin of an oak-hornbeam forest, *A. leucopoda* Tak. Det.: T. Huflejt, 2003". Earlier, it was also captured in the Russian Far East (Primorskij Kraj, Kamenushka near Ussurijsk, 2.8.1992, 2 ♀, 3 ♂, leg. J. Sawoniewicz). All specimens are in the Museum and Institute of Zoology Pas, Warsaw, Poland. (Huflejt, pers. com. and permission).

Gilpinia laricis (Jurine, 1807) (Fig. 12) - We know this species only from few locations throughout the Carpathian Basin. Firstly, Strobl recorded it at the River Piesting (Austria – Österreich) (STROBL 1895). Further places of capture: Sasvár, Lukó, Kőszeg, Visnyeszéplak, Nagyszeben, Tompa, Disznód, Györgyfalva, Budakeszi és Székelyfalva (PÁDR 1990, ROLLER atl al., 2006, MÓCZÁR and ZOMBORI 1973, SCOBIOILA-PALADE 1982 and PASCU 1978).

Stromboceros delicatulus (Fallén, 1808) (Fig. 7) - Widely distributed in the mountainous area of the Carpathian Basin: Trencsén, Balázsvágás, Limpak, Szentistvánkút, Istvánkirályfalva, Jávorai hágó, Deménvölgy, Lukó, Feketevág, Tusnádfürdő, Rétbánya, Sztranzska, Szent Anna-tó, Fekete Tisza, Apsinéc, Berlebán, Kvasznij patak, Pop Iván, Alsóláz, Brebenyészka, Mencsil, Trebusafejérpatak, Körmöcbánya, Szacsva, Béla Tátra: Hátsó Rézknák, Magas Tátra: Hátsó Jávor völgy, Tajó, Kirujfürdő, Tolvajos patak, Zeteváralja, Szencsed patak, Resinár and Uglya (MOCSÁRY 1900, ROLLER 1999a, 2006, ROLLER and HARIS 2008, ZOMBORI 1982, ZOMBORI and ERMOLENKO 1999). In the Post-Trianon Hungary, known only from the Mátra Mountains (Pisztrángos tó) (ZOMBORI 1976). In the Zselic hills, 1 ♀ (Cserénfa) and 1 ♂ (Zselickisfalud) were captured, both of them collected on *Athyrium filix-femina*.

Dolerus (Poodolerus) blanki Liston, 1995 - Very rare species. Only 4 specimens were captured in the Post-Trianon Hungary, one female from Darány (Somogy county), one female at Kis-Balaton (border of Zala and Somogy counties) and this male is from Kaposvár (Somogy county), the Szeged: Fehértó specimen lost (MOCSÁRY 1900, ZOMBORI 1982, 1985a). From the territory of the Royal Hungary, it is reported from Homonna, Hátszeg, Tasnád, Nagyszeben, Magura, Vízakna, Szenterzsébet, Pöltinis, Gyilkos tó, Fogaras, Szinája and Ogulin (MOCSÁRY 1900, SCOBIOILA-PALADE 1978).

Harpiphorus lepidus (Klug, 1818) - Larvae skeletonizes oak (*Quercus* spp.) leaves. Rare, although it was reported from the former Yugoslavia as a pest. From our present territory it is known from Budapest, Badacsony, Nadap, Órszentmiklós, Peszér and Nova (MOCSÁRY 1900, ZOMBORI 1982). Also known from Szitnya, Malacka, Ihelnik, Kereszténysziget, Nagyszeben, Hadad, Hajnica, Vágújhely, Vágsziklás, Nemesváralja and Homoródkeményfalva. (PATOCKA et al., 1962, ROLLER 1996, 1999a, 2004, ZOMBORI 1982, SCOBIOILA-PALADE 1981, ROLLER and HARIS 2008).

Fenusella nana (Klug, 1816) - Very rare species mentioned by Strobl firstly from the Carpathian Basin at River Piesting (STROBL 1896). In an interesting way, Tóth listed it in the insect pests of forests (TÓTH 1999). In the present territory of Hungary we know it only from Csévharaszt (1 ♀, captured 1st of May, 1978) (ZOMBORI 1985b, 1990). From Erdély, we know from Betlen, Beszterce-Naszód (SCOBIOILA-PALADE 1974). Nowicki reported it from Galicia: Sambor (NOWICKI 1864). This specimen was collected as a larva on Silver Birch (*Betula pendula*) at Lake Petörke at Kaposzentbenedek (close to

the road to Szenna). For identification of the larva, the book by LORENZ and KRAUS (1957) and the site of KIMBER et al. (2003) (British leafminers) were used. Roller and Haris suggested that this species should be included in the red book of the Carpathian Basin (ROLLER and HARIS 1998).

Paracharactus (Dicrostema) gracilicornis (Zaddach, 1859) (Fig. 9) - New record for Hungary. From the Carpathian Basin we have only 1 indefinite record: North-East Croatia (PEROVIC and LEINER 1996). The species is well separable from the other Phymatocerini by its whitish knees, large membraneous blotch on propodeum, the whitish or brownish-white edges of clypeus and whitish labrum. Larva feeds on *Adoxa moschatellina*.

Parna tenella (Klug, 1816) - From our present territory, this species is known from Bátorliget and Kaposmérő (ZOMBORI 1990a,b, HARIS 1998). From the Carpathian Basin, it is also known from Dévény, Csicsó, Malacka, Mosóc, Dévényújfalú, Kopács Island, Mehádia, Bánát, Borosjenő, Bezirk, Morvamogyoród, Vágsziklás and Szászka (LUKAS 1992, ROLLER 1999a, b, 2005, 2007, MOCSÁRY 1900, ZOMBORI 1990, SCOBIOLOA-PALADE 1974, 1981). This species is definitely *Parna tenella* Kl. not the similar *Parna apicalis* Brischke. Larvae make mine in leaves of *Tilia* spp.

Macrophya (Macrophya) tenella Mocsáry, 1881 (Fig. 8) - The type locality (locus typicus) of this species is Budapest: Farkasvölgy (MOCSÁRY 1900). Known also from Cserépfalu and Simontornya (ZOMBORI 1996). It is also reported from Párkány, Dévény, Vágluka, Széleskút, Gyerővásárhely, Nagyszeben, Zágráb and Felsőkalosa (LUKAS 1992, ROLLER 1999, 2005, SCOBIOLOA-PALADE 1967, 1978, JENDEKOVÁ 1988, ROLLER and HARIS 2008). Out of the Carpathian Basin, known also from Bulgaria, France, Spain and Germany (LISTON 1995).

Tenthredo (Maculedo) vespiformis Schrank, 1781 (Fig. 6) - Relatively rare *Tenthredo* species in the Carpathian Basin recorded firstly from Budapest (MOCSÁRY 1900) and from Simontornya by Lujza Pillich (PILlich 1930). Known also from Dévény, Vöröskő, Nagykovácsi, Balatonfüred, Csesznek, Isztimér, Vállus, Szőlősgyula, Feketeadó, Hömlóc, Óbást: Pogányvár, Kisgömöri, Gömör, Dévényújfalú, Récse, Sajógömör and Domogled (LUKAS 1992, LUKAS and SCHLARMANNOVÁ 1998, ROLLER 1999a, b, ZOMBORI 1975, 1980, BOKOTÉY 1956, ROLLER and HARIS 2008).

Acknowledgements

I express my grateful thanks to Mr. Ottó Pintér (Sefag, Zselic Forestry), Dr. Levente Ábrahám (SMMI), Mr. Tomasz Huflejt (Zool. Mus. and Inst. Warsaw, PAS), Mr. Zsolt Józán, Dr. Magdolna Juhász (SMMI), Mr. Andrew Liston (DEI) and Dr. Stephan Blank (DEI).

References

- ÁBRAHÁM, L. 1989: Nattán Miklós nagylepke gyűjteménye (Lepidoptera) a pécsi Janus Pannonius Múzeumban - A Janus Pannonius Múzeum Évkönyve 34: 63-71.
- ÁBRAHÁM L. 1992: A Zselic tájvédelmi körzet Macrolepidoptera faunájának ismeretéhez (Lepidoptera) Contribution to the knowledge of Macrolepidoptera in Zselic National Park (Lepidoptera) - Somogyi Múzeumok Közleményei 9: 293-306.
- ÁBRAHÁM, L. (ed.) 2001: Somogy faunakatalógusa (Catalogue of the fauna of Somogy County) - Natura Somogyiensis 1. 494 pp.
- ÁBRAHÁM L. (ed.), 2009: Magyar Biodiverzitás Napok. Gyűrűfü: 2006-2008 - Natura Somogyiensis 13. 209 pp.
- ÁBRAHÁM, L., Uherkovich Á. 1993: A Zselic nagylepkei (Lepidoptera) I. Bevezetés és faunisztikai alapvetés. - A Janus Pannonius Múzeum évkönyve - Természettudományok, 1993. 38. évf. 47-59.
- ACHTERBERG, C. van 2004: Hymenoptera. Fauna Europaea version 1.1, <http://www.faunaeur.org> (last check: 10. 08. 2009)
- ACHTERBERG, C. van & Aartsen, B. van 1986: The European Pamphiliidae (Hymenoptera: Symphyta), with special reference to the Netherlands. - Zoologische Verhandlungen, Leiden 234: 1-98.
- BLANK, S. M., RITZAU, C. 1998: Die Tenthredopsini Deutschlands (Hymenoptera: Tenthredinidae) p. 227-246. - In: TAEGER, A., BLANK, S. M. (ed): Pflanzenwespen Deutschlands (Hymenoptera, Symphyta). - Kommentierte Bestandsaufnahme. Deutsches Entomologisches Institut, Verlag Goecke & Evers, Keltern.
- BOKOTÉY, I. I. 1956: Materialy po faune pililscikov i rogochvostov (Chalastogastra, Hymenoptera) Zakarpatja. - Naucnyj zapisnik Uzgorodskovo universiteta 16: 119-132.
- CHEVIN, H. 1985: Présence en France de *Macrophya tenella* Mocsary 1881 (Hyménoptère, Tenthredinidae) et description du mâle. - Cahiers des Naturalistes, Bull. N. P., n. s., Paris 41: 19-20.
- HARIS, A. 1998: A Somogy Megyei Múzeum levéldarázs-gyűjteménye (Hymenoptera, Symphyta). - Somogyi Múzeumok Közleményei 13: 275-285.
- HARIS, A. 2001a: Revisional list of the Hungarian Nematinae with the description of three new species (Hymenoptera: Tenthredinidae). - Folia Entomologica Hungarica 62: 95-114.
- HARIS, A. 2001b: Somogy Megye levéldarázs-alkatúinak katalógusa (Hymenoptera, Symphyta). Catalogue of the sawfly fauna of Somogy county (Hymenoptera, Symphyta). -In Ábrahám, L. (ed.): Somogy Faunakatalógusa, "A XX. század végén Somogy megyéből ismertté vált állatfajok listája.", Catalogue of the Fauna of Somogy County, "A checklist of the known animal species in Somogy county at the end of 20th century.". - Natura Somogyiensis 1: 261-268.
- HARIS, A. 2003: Növényevő darazsak a Látrányi Puszta Természetvédelmi Területről (Hymenoptera: Symphyta). Sawflies from the Látrányi Puszta Nature Conservation Area (Hymenoptera: Symphyta). - In Ábrahám, L. (ed.): A Látrányi Puszta Természetvédelmi Terület élővilága. Fauna and Flora of the Látrányi Puszta Nature Conservation Area. Natura Somogyiensis 5: 201-207.
- HARIS, A. 2006: Study on the Palaearctic *Pristiphora* species (Hymenoptera: Tenthredinidae). - Natura Somogyiensis 9: 201-277.
- HEIDEMAA, M.; Nuorteva, M.; Hantula, J., Saarma, U. 2004: *Dolerus asper* Zaddach, 1859 and *Dolerus brevicornis* Zaddach, 1859 (Hymenoptera: Tenthredinidae), with notes on their phylogeny. - European Journal of Entomology, České Budejovice 101(4): 637-650.
- HEIDEMAA, M., Viitasaari, M. 2004: Taxonomy of the *Dolerus gibbosus* species group, with descriptions of *Dolerus zhelochovtsevi*, sp. nov., and males of *D. blanki* Liston, 1995, and *D. quadrinotatus* Biro, 1884, and redescription of the male of *D. gibbosus* Hartig, 1837 (Hymenoptera: Tenthredinidae) - In Heidemaa M. (2004): Systematic Studies on Sawflies of the Genera *Dolerus*, *Empria* and *Caliroa* (Hymenoptera Tenthredinidae). - Tartu University Press, Tartu 167 pp.
- HORVATOVICH S. 1990: A Zselic futóbogarai (Coleoptera, Carabidae) A Janus Pannonius Múzeum évkönyve - Természettudományok, 34: 5-14.
- JENDEKOVÁ, J. 1988: Hrubopáse (Hymenoptera, Symphyta) vybraných lokalít juhozápadného Slovenska zo zbierok Slovenského národného múzea. - Zborník Slovenského národného múzea, Prírodné Vedy 34: 49-56.
- JÓZAN Zs. 1990: A Zselic méhszerű (Hymenoptera, Apoidea) faunájának alapvetése - A Janus Pannonius Múzeum évkönyve - Természettudományok 34: 81-92.
- JÓZAN Zs. 1992: A Zselic darázsfaunájának (Hymenoptera, Aculeata) állatföldrajzi és ökofaunisztikai vizsgálata. - Somogyi Múzeumok Közleményei 1992. 9: 279-292.

- JÓZAN Zs. 2006: Újabb adatok a Zselic fullánkös hártýásszárnýú (Hymenoptera, Aculeata) faunájának ismeretéhez Somogyi Múzeumok Közleményei, 17 B: Természettudomány 169-182.
- KIMBER, I., Talbot, P., Manning, D., Dickerson, B., Plant C., Martin, E., Edmunds, R. 2003: British leafminers. <http://www.leafmines.co.uk> (last check 10. 08. 2009)
- KOCH, F. 1988: Die Gattung *Sterictiphora* Billberg (Insecta, Hymenoptera, Symphyta: Argidae) - Entomologische Abhandlungen. Staatliches Museum für Tierkunde in Dresden, Leipzig 52(2): 29-61.
- KRAUS, M. 1998: Einige für Deutschland oder Bayern neue Blattwespen (Hymenoptera: Symphyta). In: Taeger, A. & Blank, S. M. 1998 (Hrsg.): Pflanzenwespen Deutschlands (Hymenoptera, Symphyta). Kommentierte Bestandsaufnahme. - Goecke & Evers, Keltern : 35-41; Taf. 3
- LELEJ A. S., TAEGER A. 2007: Sem. Argidae - Argidy. - Pp. 943-944. - In: Lelej A.S. (ed.). Key to the insects of Russian Far East. Vol. IV. Neuropteroidea, Mecoptera, Hymenoptera. Pt. 5. Vladivostok: Dal'nauka, 1052 pp. (in Russian).
- LISTON, A. 1995: Compendium of European Sawflies. Chalastos Forestry, Gottfrieding, Germany. 190. pp.
- LISTON, A. D. 1997: Discovery of the larval hostplant of *Corynis crassicornis* (Rossi) (Hym., Cimbicidae: Coryninae), and notes on the species natural history. - Sawfly News, Daibersdorf 1(3) 22-25.
- LISTON, A. D. 2004: The hostplant and larva of *Allantus didymus* (Klug, 1818) (Hymenoptera: Tenthredinidae). - Entomologische Zeitschrift, Stuttgart 114(2) : 51-52.
- LORENZ, H., Kraus, M. 1957: Die Larvalsystematik der Blattwespen (Tenthredinoidea und Megalodontoidea). - Abhandlungen zur Larvalsystematik der Insekten, Berlin 1: 1-389.
- LUKÁS, J. 1992: Sawflies (Hymenoptera, Symphyta) of the State Nature Reservation Devínska Kobyla and Sandberg. - Acta zoologica Universitatis Comenianae 36: 25-44.
- LUKÁS, J. and Schlarmanová, J. 1998: Príspevok k poznaniu blanokridlovcov (Hymenoptera) Bielych Karpát. - Sborník Prírodovedneho klubu v Uh. Hradisti 3: 90-97.
- MOCSÁRY, S. 1900: Ordo Hymenoptera. p. 7-113. - In: PASZLAVSKY, J. (ed.): Fauna Regni Hungariae, Regia Societas Scientiarum Naturalium Hungarica, Budapest.
- MÓCZÁR, L., Zombori, L. 1973: Tenthredinoidea - Levéldarázs-alkatúak I. In: Fauna Hungariae, Akadémiai Kiadó, Budapest, 111, 11(2), 128 p.
- NÓGRÁDI S., UHERKOVICH Á. 1990: The Trichoptera fauna of the Zselic downs, Hungary. A Zselic tegzes (Trichoptera) faunája - A Janus Pannonius Múzeum évkönyve - Természettudományok, 34: 15-38.
- NOWICKI, M. 1864: II. Hymenoptera L. - In: NOWICKI, M. (ed.) Przyczynek do owadniczej fauny Galicyi II. Kraków, w Drukarni Uniwersyteckiej 87 pp.
- PÁDR, Z. 1990: Faunistics records from Czechoslovakia, Hymenoptera. -Acta entomologica bohemoslovaca 87: 314-318, 396-398.
- PASCU, M. 1978: Catalogiul Himenopterelor (subord. Symphyta, fam. Xyphidriidae, Siricidae, Cephidae, Argidae, Cimbicidae si Diprionidae) din colectia Muzeului de Istorie Naturala Sibiu - Romania. - Muzeul Brukenthal - Studii si Comunicari, St. nat. 22: 329-338.
- PATOCKA, J., CAPEK, M., CHARVÁT, K. 1962: Príspevok k poznaniu korunovej fauny článkonozcov na duboch Slovenska, predovsetkym so zretelom na rad Lepidoptera. - Biologické Práce 8(5): 1-154.
- PEROVIC, F., Leiner, S. 1996: Index of the sawflies sensu lato (Hymenoptera, Symphyta) of Croatia. - Natura Croatica 5(4): 359-381.
- PILLICH, L. 1930: Mein erster Versuch. - Folia Entomologica Hungarica 2: 92-107.
- POLINSZKY, E. 1886: Adatok Somogymegye bogárfaunájához. - Rovartani Lapok 3: 146.148.
- PSCHORN-WALCHER, H. & ALTENHOFER, E. 2000: Langjährige Larvenaufsammlungen und Zuchten von Pflanzenwespen (Hymenoptera, Symphyta) in Mitteleuropa. - Linzer biologische Beiträge.32(1): 273-327
- PSCHORN-WALCHER, H. & Altenhofer, E. 2006: Neuere Larvenaufsammlungen und Zuchten von mitteleuropäischen Pflanzenwespen (Hymenoptera, Symphyta). - Linzer biologische Beiträge. 38(2): 1609-1636.
- ROLLER, L. 1996: New records of sawflies (Hymenoptera, Tenthredinidae) in Slovakia. - Biologia, Bratislava 51(1): 549-550.
- ROLLER, L. 1999a: Spolocensťvá hrubopásych (Hymenoptera: Symphyta) vybraných zoogeografických regiónov Slovenska. PhD thesis, Ústav zoológie, Slovenská akadémia vied, Bratislava, 180 pp.
- ROLLER, L., 1999b: Check list of the sawflies (Hymenoptera: Symphyta) of Slovakia. - Entomological Problems 30(2): 37-48.
- ROLLER, L. 2004. Hrubopáse blanokridlovce (Hymenoptera, Symphyta) Tematínskych kopcov. - Entomofauna Carpathica 16: 56-64.
- ROLLER, L., 2005: Blanokridlovce (Hymenoptera): hrubopáse (Symphyta). 117-123 In: Fauna Devínskej Kobly. APOP, Bratislava, 181 pp.

- ROLLER, L. 2007: Hrubopáse blanokrídlovce (Hymenoptera, Symphyta) ostrova Kopác. p 197-206. - In: MAJZLAN O (ed.) Príroda ostrova Kopác. Fytoterapia OZ, Bratislava, 287 pp.
- ROLLER L., BENES K., BLANK S. M., HOLUSA J., JANSEN E., JANICKE M., KALUZA S., KEHL A., KEHR I., KRAUS M., LISTON A. D., NYMAN T., NIE H., SAVINA H., TAEGER A., WEI M., 2006: Contribution to the knowledge of sawfly fauna (Hymenoptera, Symphyta) of the Low Tatras National Park in Central Slovakia. - *Naturae Tutela* 10: 57-72.
- ROLLER, L., HARIS, A. 2008: Sawflies of the Carpathian Basin, history and current research - *Natura Somogyiensis* 11. Kaposvár. 259 pp.
- SCHEDL, W. 1991: Hymenoptera, Unterordnung Symphyta, Pflanzenwespen. In: *Handbuch der Zoologie, Eine Naturgeschichte der Stämme des Tierreiches (M. FISCHER, ed.)*. Band IV: Arthropoda: Insecta, Teilband 31. Berlin: Walter de Gruyter.
- SCOBIOLA-PALADE, X. 1967: Catalogue of the collection of Hymenoptera (Tenthredinidae, Sphecidae and Pompiloidea) of the Brukenthal Museum (Department of Natural Sciences) in Sibiu, Rumania. (Monography) - *Travaux du Museum d'Histoire Naturelle Grigore Antipa Bucharest* 64 pp.
- SCOBIOLA-PALADE, X. 1974: Beiträge zur Kenntnis der minierenden Blattwespen (Hymenoptera: Symphyta) aus Rumanien. - *Folia Entomologica Hungarica Supplement. 27*: 365-370.
- SCOBIOLA-PALADE, X., 1978: Hymenoptera Symphyta Tenthredinoidea, Tenthredinidae subf. Selandrinae, Tenthredininae, Heterarthrinae. In: *Fauna Republicii Socialiste România, Acad. Rep. Soc. Rom., Bucuresti*, 9 (8): 248 pp.
- SCOBIOLA-PALADE, X., 1981: Hymenoptera Symphyta Tenthredinoidea, Tenthredinidae subf. Blenocampinae, Nematinae. In: *Fauna Republicii Socialiste Romania, Acad. Rep. Soc. Rom., Bucuresti*, Vol. 9(9): 328 pp.
- SCOBIOLA-PALADE, X. 1982: La liste especes d'Argidae, de Cimbicidae et de Diprionidae (Sous-Ord, Symphyta) de Roumanie. - *Travaux du Museum d'Histoire Naturelle Grigore Antipa*. 24: 125-133.
- STROBL, G. 1895: Beiträge zur geographischen Verbreitung der Tenthrediniden I-V. - *Wiener Entomologische Zeitung* 14: 139-144, 171-175, 194-198, 264-265, 277-279.
- STROBL, G. 1896: Beiträge zur geographischen Verbreitung der Tenthrediniden VI-XIV. - *Wiener Entomologische Zeitung* 15: 8-12, 60-63, 117-120, 143-144, 193-197, 218-224, 275-281, 295-298.
- SZABÓ, G. 2007: Adatok a Dunántúli-dombság nagy lepke faunájához (Lepidoptera: Macrolepidoptera) - *Natura Somogyiensis* 10: 331-339.
- TOGASHI, I. 1968: Japanese sawflies of the subfamily Sterictiphorinae (Hymenoptera, Symphyta). - *Kontyu, Tokyo* 36(3): 285-293.
- TÓTH S. 1992: Adatok a Zselic zengőlégy faunájához (Diptera: Syrphidae) - *Somogyi Múzeumok Közleményei*, 9: 307-319.
- TÓTH, J. 1999: Erdészeti rovartan. Agroiinform Kiadó, Budapest 480 pp.
- ÜHERKOVICH Á. 1978: A zselici tájvédelmi körzet nagylepke faunája (Lepidoptera) A Zselic nagylepke faunája III. - *Somogyi Múzeumok Közleményei* 3: 503-518.
- ÜHERKOVICH Á. 1980: A Zselic nagylepkefaunája I. Vásárosbéc környéke (Lepidoptera) - *A Janus Pannonius Múzeum évkönyve - Természettudományok* 25: 85-98.
- ÜHERKOVICH Á. 1981: Belső-Somogy és a Zselic határvidékének lepidopterológiai viszonyai (Lepidoptera). - *Somogyi Múzeumok Közleményei* 4: 5-24.
- ÜHERKOVICH Á. 1982a: A Zselic nagylepkefaunája II. Délkelet-Zselic (Lepidoptera) - *A Janus Pannonius Múzeum évkönyve - Természettudományok* 26: 33-50.
- ÜHERKOVICH Á. 1982b: A Zselic nagylepkefaunája IV. Kelet-Zselic: Palé környéke (Lepidoptera) - *A Janus Pannonius Múzeum évkönyve - Természettudományok* 27: 37-50.
- ÜHERKOVICH Á., ÁBRAHÁM, L. 2007: A keleti lápi bagolylepke - *Arytrura musculus* (Ménétriés, 1859) (Lepidoptera: Noctuidae) előfordulása a Zselicben - *Natura Somogyiensis* 10: 361-363.
- ZHELOCHOVTSEV, A. N. 1988: Otryad Hymenoptera – Pereponchatokrylye, Podotryad Symphyta – Sidyachebryukhie, 7-234. In: MEDVEDEV, K.H. (ed.) *Opredelitel nasekomykh evropeiskoi chasti SSSR*, Vol. 3 Hymenoptera, Part 6, Nauka, Leningrad.
- ZILAH-KISS, E. 1904: Adatok Szilágymegye Hymenoptera-faunájához. - *Rovartani Lapok* 11: 47-50.
- ZOMBORI, L. 1975: Jegyzetek Nagykovácsi levéldarázs faunájáról (Hymenoptera: Symphyta) II. - *Folia Entomologica Hungarica* 28(1): 223-229.
- ZOMBORI, L. 1976: New sawfly species in the Hungarian fauna (Hymenoptera, Symphyta), II. - *Annales historico-naturales Musei Nationalis Hungarici* 68: 209-213.
- ZOMBORI, L. 1979: Újabb adatok a Mátra Múzeum levéldarázs-gyűjteményéhez - *Folia Historico-Naturalia Musei Matraensis* 5: 51-55.

- ZOMBORI, L. 1980: A Bakonyi Természettudományi Múzeum levéldarázs-gyűjteménye (Hymenoptera: Symphyta) III. - A Veszprém megyei múzeumok közleményei 15: 181-188.
- ZOMBORI, L. 1981: The Symphyta (Hymenoptera) fauna of the Hortobágy National Park. – In MAHUNKA S. (ed.): Natural History of the National Parks of Hungary No. 1: The Fauna of the Hortobágy National Park. Akadémiai Kiadó: Budapest, Hungary 245-250.
- ZOMBORI, L. 1982: Tenthredinoidea - Levéldarázs-alkatúak II. - In: Fauna Hungariae, Akadémiai Kiadó, Budapest, 153, 11(3/A), 144 p.
- ZOMBORI, L. 1985a: Adatok a Barcsi borókás növényevő darazsainak ismeretéhez (Hymenoptera, Symphyta). - Dunátúli Dolgozatok Természettudományi sorozat 2: 171-176.
- ZOMBORI, L., 1985b: The Symphyta (Hymenoptera) Fauna of the Kiskunság National Park. 357-363. - In: MAHUNKA, S. (ed.): The fauna of the Kiskunság National Park. Hungarian Natural History Museum, Budapest.
- ZOMBORI, L. 1990a: Tenthredinoidea - Levéldarázs-alkatúak III. -In: Fauna Hungariae, Akadémiai Kiadó, Budapest, 165, 11(3/B), 81 pp.
- ZOMBORI, L. 1990b: Sawflies from Bátorliget (Hymenoptera: Symphyta). 593-599. - In: MAHUNKA, S., (ed.): The Bátorliget nature reserve – after forty years, Studia Naturalia, Hungarian Natural History Museum, Budapest.
- ZOMBORI, L. 1996: Symphyta from the Bükk national park (Hymenoptera). 435-452. - In: MAHUNKA, S. (ed.): The fauna of the Bükk national park, II. Hungarian Natural History Museum, Budapest.
- ZOMBORI, L. 2003: The history of the Symphyta fauna of the Carpathian Basin (Hymenoptera) – Part V. - Folia Entomologica Hungarica 64: 227-235.
- ZOMBORI, L., Ermolenko, V. 1999: The history of the Symphyta fauna of the Carpathian Basin (Hymenoptera): Part III/1. - Folia Entomologica Hungarica 60: 239-250.