



Neotropical Ichthyology

Print version ISSN 1679-6225 On-line version ISSN 1982-0224

Neotrop. ichthyol. vol.18 no.4 Maringá 2020 Epub Dec 14, 2020

<https://doi.org/10.1590/1982-0224-2020-0050>

ORIGINAL ARTICLE

Mesophotic ecosystems at Fernando de Noronha Archipelago, Brazil (South-western Atlantic), reveal unique ichthyofauna and need for conservation

Caio R. Pimentel^{1 2}

<http://orcid.org/0000-0003-4110-1249>

Luiz A. Rocha²

<http://orcid.org/0000-0003-4011-569X>

Bart Shepherd²

<http://orcid.org/0000-0002-8918-1551>

Tyler A. Y. Phelps²

<http://orcid.org/0000-0001-7893-643X>

Jean-Christophe Joyeux¹

<http://orcid.org/0000-0002-1281-4154>

Agnaldo S. Martins¹

<http://orcid.org/0000-0003-2160-1326>

Carlos Eduardo Stein³

<http://orcid.org/0000-0001-7304-4045>

João B. Teixeira^{1 3}

<http://orcid.org/0000-0002-7630-6474>

João Luiz Gasparini^{1 4}

<http://orcid.org/0000-0001-8294-0618>

José Amorim Reis-Filho⁵

<http://orcid.org/0000-0001-6942-1290>

Ricardo C. Garla⁶

<http://orcid.org/0000-0002-0827-225X>

Ronaldo B. Francini-Filho⁷

<http://orcid.org/0000-0002-7678-6797>

Stephanie D. T. Delfino¹

<http://orcid.org/0000-0002-2006-0292>

Thayná J. Mello⁸

<http://orcid.org/0000-0002-9123-5643>

Tommaso Giarrizzo⁹

<http://orcid.org/0000-0002-5116-5206>

Services on Demand

Journal

- SciELO Analytics
- Google Scholar H5M5 (2020)

Article

- text new page (beta)
- Article in xml format
- How to cite this article
- SciELO Analytics
- Curriculum ScienTI
- Automatic translation

Indicators

Related links

Share

More

More

Permalink

Hudson T. Pinheiro^{2 3} <http://orcid.org/0000-0002-3143-1474>

¹ Programa de Pós-Graduação em Oceanografia Ambiental, Dep. de Oceanografia e Ecologia, Univ. Federal do Espírito Santo, Av. Fernando Ferrari, 514, Goiabeiras, 29075-910 Vitória, ES, Brazil. (CRP) caiopimentelr@gmail.com; (JCJ) jean.joyeux@ufes.br; (ASM) agnaldo.ufes@gmail.com; (JBT) jboceano@gmail.com; (JLG) gaspa.vix@gmail.com; (SDTD) dtdstephanie@gmail.com.

² California Academy of Sciences, 94118 San Francisco, CA, USA. (LAR) lrocha@calacademy.org; (BS) bshepherd@calacademy.org; San Francisco State University, 94132 San Francisco, CA, USA, (HTP) htpinheiro@gmail.com; (TP) tphelps@calacademy.org; (HTP) htpinheiro@gmail.com.

³ Associação Ambiental Voz da Natureza, Rua Coronel Shuwab Filho, 104, 29052-070 Vitória, ES, Brazil. (CES) stein.ce@gmail.com.

⁴ Programa de Pós-Graduação em Ciências Ambientais e Conservação, Instituto de Biodiversidade e Sustentabilidade, Univ. Federal do Rio de Janeiro, 29910-970 Macaé, RJ, Brazil.

⁵ ICHTUS Soluções em Meio Ambiente, R. Dep. Herculano Menezes, 10, 41335-400 Salvador, BA, Brazil. (JARF) amorim@ichthusambiental.com.br.

⁶ Departamento de Botânica e Zoologia, Univ. Federal do Rio Grande do Norte, 59078-970 Natal, RN, Brazil. (RCG) rgarla@hotmail.com.

⁷ Centro de Biologia Marinha, Univ. de São Paulo, 11612-109 São Sebastião, SP, Brazil. (RBFF) francinifilho@usp.br.

⁸ Programa de Pós-Graduação em Ecologia, Centro de Biociências, Universidade Federal do Rio Grande do Norte, 59072-970 Natal, RN, Brazil. (TJM) thaynajm@gmail.com.

⁹ Núcleo de Ecologia Aquática e Pesca da Amazônia, Univ. Federal do Pará, Av. Perimetral, 2651, Terra Firme, 66040-170 Belém, PA, Brazil. (TG) tgiarizzo@gmail.com.

ABSTRACT

Although several studies on the ichthyofauna of the Fernando de Noronha Archipelago have been carried out, its mesophotic fish diversity has never been surveyed before. Here we used SCUBA and technical rebreather diving, baited remote underwater videos and remotely operated vehicle to record shallow (≤ 30 m depth) and mesophotic (31 to 150 m depth) fishes. Nineteen fish species belonging to 14 families are reported here as new records, representing an increase of 8.2% in marine fish richness for the region, which now has a total of 250 species and 77 families. These new records include four potential new species and highlight the importance of surveying mesophotic ecosystems, even in well studied sites. Our results also emphasize the need for protection and attention to the unique ichthyofauna found at mesophotic depths.

Keywords: BRUVS; Marine Protected Area; Oceanic Island; Rebreather; Remotely Operated Vehicle

RESUMO

Apesar de muitos estudos sobre a ictiofauna do Arquipélago de Fernando de Noronha terem sido realizados, sua diversidade de peixes mesofóticos nunca foi estudada antes. Neste estudo utilizamos mergulho autônomo e mergulho técnico, vídeos subaquáticos remotos com isca e veículo operado remotamente para registrar peixes de ecossistemas rasos (≤ 30 m de profundidade) e mesofóticos (31 a 150 m de profundidade). Dezenove espécies de peixes pertencentes a 14 famílias são apresentadas aqui como novos registros, representando um aumento de 8,2% na riqueza de peixes marinhos da região, que agora possui um total de 250 espécies e 77 famílias. Esses novos registros incluem quatro prováveis novas espécies e reforçam a importância de estudos em ecossistemas mesofóticos. Nossos resultados também enfatizam a necessidade de proteção e atenção à essa ictiofauna única encontrada nesses ecossistemas profundos.

Palabras-chave: Área Marinha Protegida; BRUVS; Ilha Oceânica; Rebreather; Veículo Operado Remotamente

INTRODUCTION

Due to their geographical isolation, oceanic islands are often unique environments with biodiversity characterized by high endemism (Vaske Jr *et al.*, 2005; Macieira *et al.*, 2015; Kosaki *et al.*, 2017; Pinheiro *et al.*, 2018a). These environments function as true natural laboratories for evolutionary and ecological studies (Pinheiro *et al.*, 2017) and are important for understanding patterns of species dispersal and establishment (Losos, Ricklefs, 2009). Recent studies are revealing many new species and new occurrences, filling gaps in the biodiversity knowledge and increasing our understanding about the biogeographic patterns of oceanic islands (e.g., Simon *et al.*, 2013; Macieira *et al.*, 2015; Carvalho-Filho *et al.*, 2016; Pinheiro *et al.*, 2018a).

Knowledge about reef fish biodiversity and biogeographic patterns of South Atlantic oceanic islands has steadily increased over the past two decades (e.g., [Batista et al., 2012](#); [Wirtz et al., 2017](#); [Hachich et al., 2015](#); [Pinheiro et al., 2015, 2018a](#); [Quimbayo et al., 2019](#)). However, mesophotic ecosystems (between 31 - 150 m depth) remain largely unknown and are only now receiving some scientific attention (e.g., [Rocha et al., 2018](#)). Even though these ecosystems have been recognized since the 19th century ([Sinniger et al., 2016](#)), the first studies in Brazil date back only to the 1960s ([Francini-Filho et al., 2019](#)). Systematic studies of the mesophotic ecosystems have however increased worldwide (e.g., [Rosa et al., 2015](#); [Andradi-Brown et al., 2016](#); [Pyle et al., 2016](#); [Simon et al., 2016](#); [Rocha et al., 2018](#); [Pinheiro et al., 2019](#); [Pimentel et al., 2020](#)). Such pioneer studies have provided important baseline information, such as richness and diversity of species, and form the basis for more complex ecological and evolutionary studies.

Fernando de Noronha Archipelago (FN) is the most accessible oceanic island in Brazil, as it is relatively close to the mainland and has an airport. It also offers logistical support due to the presence of a research station and several dive shops and boats. Part of the Archipelago comprises a no-take Marine Protected Area (MPA), the Fernando de Noronha Marine National Park, which protects near-shore ecosystems (e.g., tidepools, rocky shores, and reefs) to around 50 m depth. Most of the mesophotic ecosystems are located in a sustainable use MPA, the Fernando de Noronha - Rocas - São Pedro and São Paulo Environmental Protected Area, where fishing is allowed with some restrictions (ICMBio, 2017). Nearly all biodiversity and ecological studies of FN's ichthyofauna to date have been carried out in the intertidal (e.g., [Andrades et al., 2018](#); [Rodríguez-Rey et al., 2018](#)) and shallow (≤ 20 m deep) environments (e.g., [Krajewski, Floeter, 2011](#); [Medeiros et al., 2011](#); [Ilarri et al., 2017](#); [Smith-Vaniz et al., 2018](#); but see [Garla et al., 2006](#); [Sazima et al., 2010](#); [Afonso et al., 2017](#)).

Therefore, to fill the knowledge gap about fish biodiversity from mesophotic ecosystems of the Fernando de Noronha Archipelago, we carried out a large-scale survey using sampling techniques including technical rebreather diving, baited remote underwater stereo-video systems (stereo-BRUVS) and remotely operated vehicles (ROVs). Here, we present new records and new species of fishes discovered during our expedition, discuss aspects related to the island's biodiversity and biogeography, and highlight the need to protect insular mesophotic ecosystems.

MATERIAL AND METHODS

Study area. Fernando de Noronha Archipelago is located 345 km off the north-eastern Brazilian coast (03°50'S 32°25'W), on the Fernando de Noronha Submarine Ridge ([Fig. 1](#)). It is the largest Brazilian oceanic archipelago, composed by a volcanic island (16.4 km²) and 18 small islets ([Almeida, 2006](#)). The shallow reefs (≤ 30 m depth) are mainly composed by volcanic rocks predominantly covered by algal turfs and brown macroalgae, with low coral cover ([Krajewski, Floeter, 2011](#)). Following the pattern of low diversity typical of Atlantic oceanic islands ([Ferreira et al., 2004](#); [Floeter et al., 2008](#)), the fish assemblages are dominated by a few very abundant species ([Krajewski, Floeter, 2011](#); [Ilarri et al., 2017](#)). Compared to shallow reefs, the upper mesophotic reefs (31 to 60 m depth) show higher cover of sponges and the scleractinian coral *Montastraea cavernosa* (Linnaeus, 1767) ([Matheus et al., 2019](#)). A mosaic of habitats such as patch reefs, sand bottoms and rhodolith beds compose the middle mesophotic zone (61 to 90 m depth; [Fig. 2](#)). Below 90 m depth, the edge of the insular shelf followed by a steep wall characterizes the lower mesophotic zone (91 to 150 m; [Fig. 3](#)). A strong thermocline is found just below the shelf edge, where the temperature drops from ~ 27 to ~ 14 °C. The ecosystem at the lower mesophotic zone is highly complex, formed by rocky reefs covered mostly by crustose coralline algae, black corals and sponges.

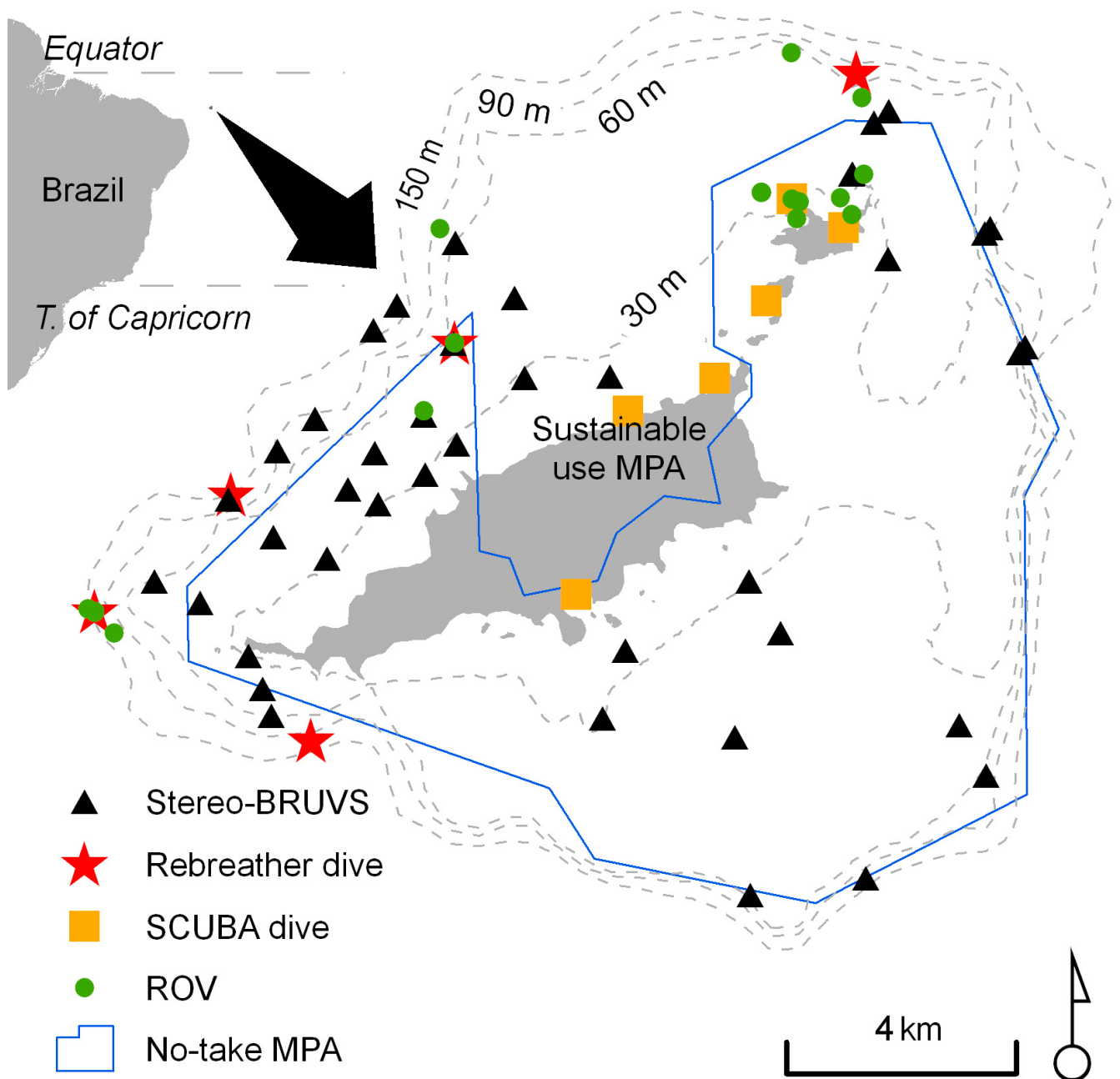
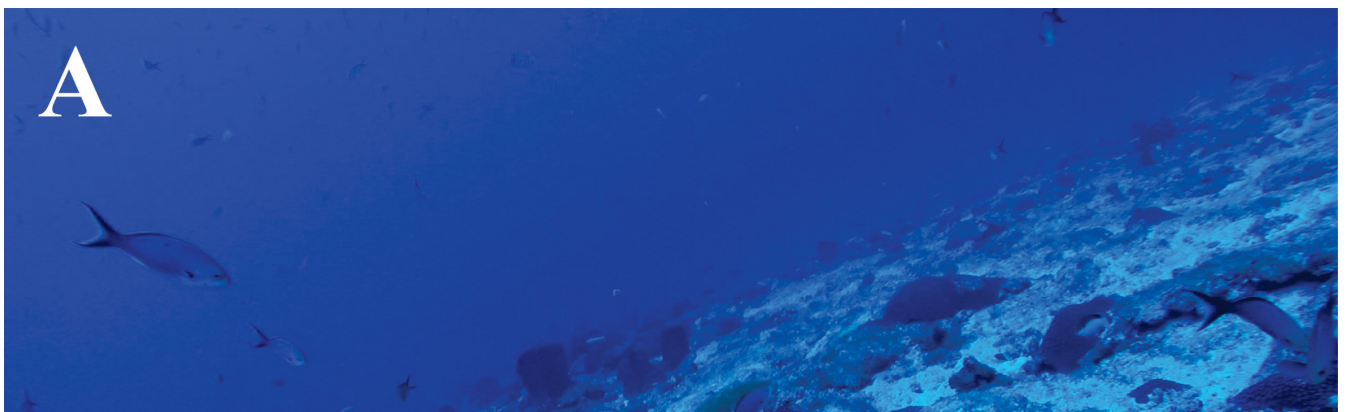


FIGURE 1 | Location of the Fernando de Noronha Archipelago, Brazil (South-western Atlantic). Blue line indicates the area of the Marine National Park of Fernando de Noronha (no-take MPA). Dashed lines indicate the 30, 60, 90 and 150 m isobaths. Black triangles, red stars, golden squares and green dots indicate the position of stereo-BRUVS deployments, rebreather dives, SCUBA dives and ROV footages, respectively.



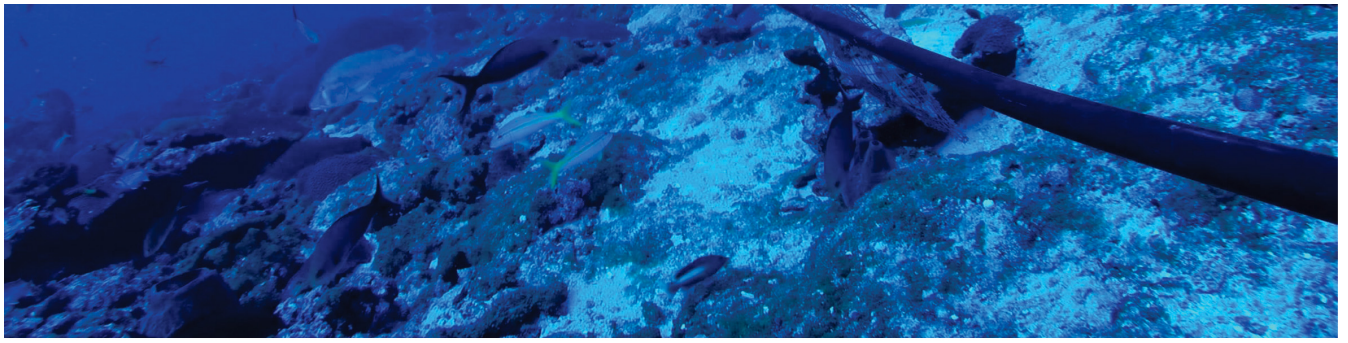


FIGURE 2 | Middle mesophotic (61 to 90 m depth) mosaic of habitats sampled with stereo-BRUVS around the Fernando de Noronha Archipelago. **A.** Patch reefs; **B.** Sand bottoms; and **C.** Rhodoliths beds.

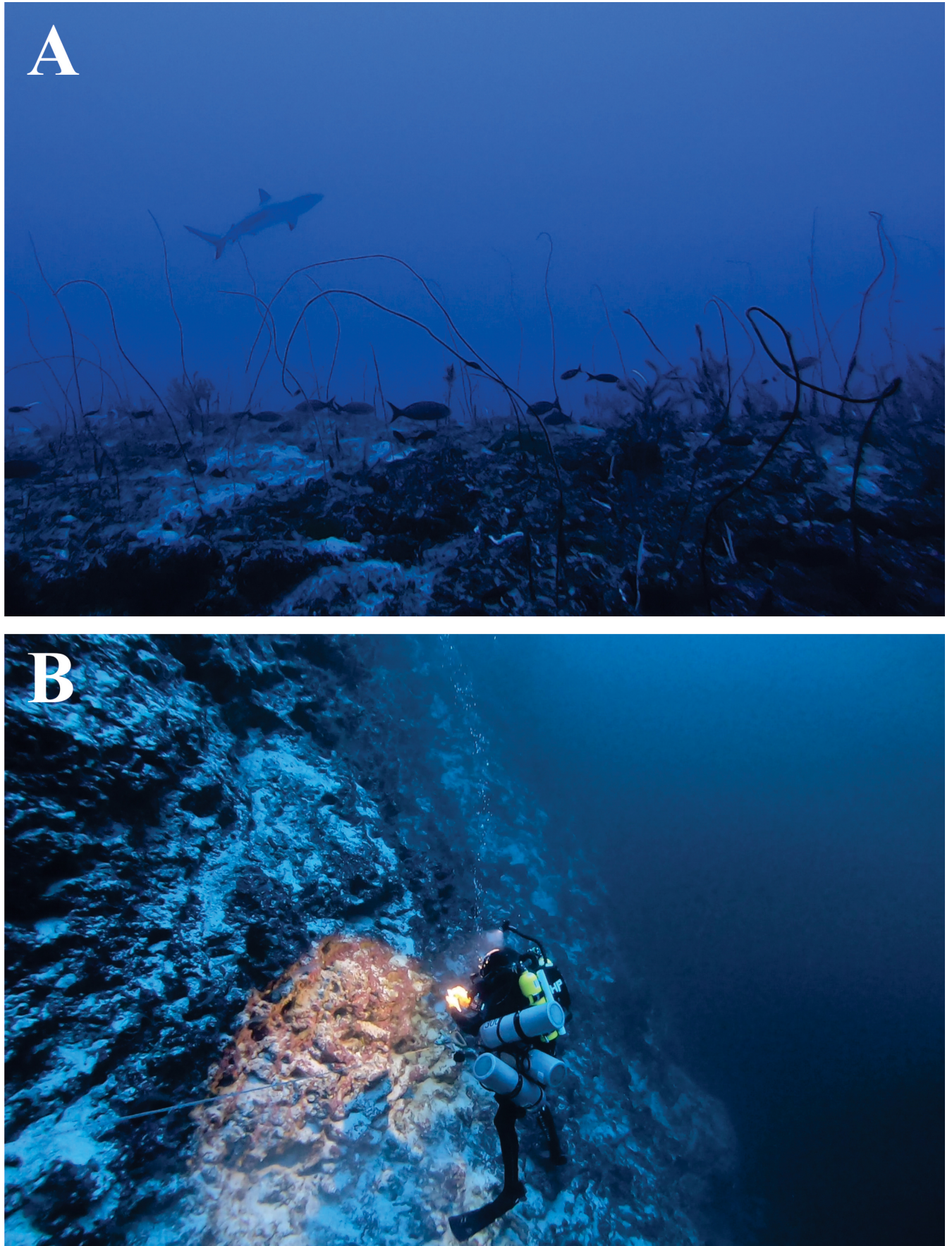


FIGURE 3 | Lower mesophotic (below 90 m depth) ecosystems explored through technical rebreather diving around the Fernando de Noronha Archipelago. **A.** The insular shelf edge; and **B.** The steep wall.

Regarding environmental management, the Archipelago encompasses two different types of Marine Protected Areas, the no-take zone of the Fernando de Noronha Marine National Park ([Brasil, 1988](#)), and the sustainable use

zone of the Fernando de Noronha - Rocas - São Pedro and São Paulo Environmental Protected Area ([Brasil, 1986](#)) ([Fig. 1](#)). The Marine National Park comprises about 70% of the main island (*i.e.*, all the windward coast and part of the leeward coast), all smaller islands and extends to around the 50 m isobath, with fishing prohibited and tourism regulated ([Brasil, 1988](#); [Ibama, 1990](#)). The area of sustainable use aims to make human occupation, tourism and fishing compatible with environmental protection and preservation of natural resources ([Brasil, 1986](#); [ICMBio, 2017](#)). The use of trawl nets, longlines, drift nets and spears, as well as the capture of sharks, rays and parrotfishes are not allowed ([Brasil, 1986](#); [ICMBio, 2017](#)).

Sampling procedures. The data presented here were obtained during a 15-day expedition in October 2019. Fish were recorded with SCUBA (*ca.* 30 h sampling in the euphotic zone) and technical rebreather diving (*ca.* 6 h sampling in the upper and 2 h in the lower mesophotic zone), remotely operated vehicle (ROV -*ca.* 8 h of footage) and baited remote underwater stereo-video systems (stereo-BRUVS - 42 deployments of 1 h footage each). Some fishes were collected using hand-nets and pole-spears, and voucher specimens were deposited in the ichthyological collection of the Universidade Federal do Espírito Santo (CIUFES; see [Tab. 1](#) for catalogue numbers).

Data analysis. Species identification was performed using taxonomic keys (*e.g.*, [Menezes, 1971](#); [Knudsen, Clements, 2013](#)) and, when necessary, comparing our collected specimens with others available at the ichthyological collection of CIUFES. We then classified the species according to: 1) depth zone of the record, *i.e.*, euphotic (≤ 30 m) or mesophotic ($> 30 - 150$ m), 2) habitat (reef or rhodolith), 3) the type of the record (collected, photographed or filmed with ROV or stereo-BRUVS), 4) geographic range (following [Pinheiro et al., 2018a](#)), and 5) conservation status, following the International Union for Conservation of Nature's (IUCN) Red List of Threatened Species (<https://www.iucnredlist.org>).

RESULTS

Nineteen fish species belonging to 14 families are reported here as new records for FN ([Tab. 1](#)). The most speciose families were Kyphosidae and Serranidae, with three new records each, followed by Pomacentridae, with two new records. Fourteen new records (74% of total) were from the mesophotic ecosystems ([Figs. 4-5](#); [Tab. 1](#)) and five (26%) from the euphotic zone ([Fig. 6](#); [Tab. 1](#)). Seven species are distributed throughout the Western Atlantic, and the three Kyphosidae are circumtropical species. Three other species are amphi-Atlantic, one of which also occurs in the Mediterranean (*Balistes capriscus* Gmelin, 1789). *Aulotrachichthys argyrophanus* (Woods, 1961) occurs only in the South-western Atlantic and *Chromis scotti* Emery, 1968 is found in the Caribbean Sea and Northern Brazil ([Moura et al., 1999](#)). Four new records are probable new species (*Synodus* sp., *Scorpaena* sp., *Psilotris* sp., and *Tosanoides* sp.) with unknown geographic range ([Fig. 4E-G](#); [Tab. 1](#)). In terms of conservation status, only *B. capriscus* is listed as threatened, being currently classified as vulnerable in the IUCN Red List ([Liu et al., 2015](#)).

TABLE 1 | New records of fishes from Fernando de Noronha Archipelago, north-eastern Brazil. Families are presented in phylogenetic order according to [Nelson et al. \(2016\)](#). Information about depth zone, habitat, record type and voucher of the new records, as well as distribution and conservation status of the species are presented. Depth zone of the record: euphotic (≤ 30 m deep) and mesophotic (31 to 150 m deep). Geographic range: amphi-Atlantic (AA), Caribbean Sea (CS), Circumtropical (CT), Mediterranean (M), Northern Brazil (NB), South-western Atlantic (SW) and Western Atlantic (WA). International Union for Conservation of Nature and Natural Resources (IUCN) conservation status: data deficient (DD), least concern (LC), and vulnerable (VU); N/A: not applicable.

Family	Species	Depth zone	Habitat	Record type	Voucher	Geographic Conservation	
						range	status
Synodontidae	<i>Synodus</i> sp.	Mesophotic	Reef	Photo	Fig. 4	Unknown	N/A
Holocentridae	<i>Corniger spinosus</i> Agassiz, 1831	Mesophotic	Reef	Collected / Photo	CIUFES 3922 / Fig. 5	AA	LC
Trachichthyidae	<i>Aulotrachichthys argyrophanus</i> (Woods, 1961)	Mesophotic	Reef	Collected / Photo	CIUFES 3909 / Fig. 5	SW	DD
Apogonidae	<i>Apogon pseudomaculatus</i> Longley, 1932	Euphotic	Reef	Collected	CIUFES 3957	WA	LC
Gobiidae	<i>Psilotris</i> sp.	Mesophotic	Reef	Photo	Fig. 4	Unknown	N/A
Pomacentridae	<i>Chromis enchrysurus</i> Jordan & Gilbert, 1882	Mesophotic	Reef	Collected / Photo	CIUFES 3902 / Fig. 4	AA	LC
Pomacentridae	<i>Chromis scotti</i> Emery, 1968	Mesophotic	Reef	Photo	Fig. 4	CS / NB	LC
Syngnathidae	<i>Cosmocampus profundus</i> (Herald, 1965)	Mesophotic	Rhodolith	Stereo-BRUVS	Fig. 4	WA	DD
Labridae	<i>Decodon puellaris</i> (Poey, 1860)	Mesophotic	Reef	Collected	CIUFES 3914 / Fig. 5	WA	LC
Kyphosidae	<i>Kyphosus bigibbus</i> Lacepède, 1801	Euphotic	Reef	Photo	Fig. 6	CT	LC
Kyphosidae	<i>Kyphosus cinerascens</i> (Forsskål, 1775)	Euphotic	Reef	Photo	Fig. 6	CT	LC
Kyphosidae	<i>Kyphosus vaigiensis</i> (Quoy & Gaimard, 1825)	Euphotic	Reef	Collected / Photo	CIUFES 4050 / Fig. 6	CT	LC
Serranidae	<i>Pronotogrammus martinicensis</i> (Guichenot, 1868)	Mesophotic	Reef	Collected / Photo	CIUFES 3939 / 3960 / Fig. 5	WA	LC
Serranidae	<i>Pseudogramma gregoryi</i> (Breder, 1927)	Euphotic	Rhodolith	Collected / Photo	CIUFES 4029 / Fig. 6	WA	LC
Serranidae	<i>Tosanoides</i> sp.	Mesophotic	Reef	Collected	CIUFES 3892 / 3893 / 3894 / 3912 /	Unknown	N/A

Chaetodontidae	<i>Prognathodes guyanensis</i> (Durand, 1960)	Mesophotic Reef	Collected / Photo / ROV	CIUFES 3959 / Fig. 4	WA	LC
Lutjanidae	<i>Lutjanus buccanella</i> (Cuvier, 1828)	Mesophotic Rhodolith	Stereo-BRUVS	Fig. 4	WA	DD
Scorpaenidae	<i>Scorpaena</i> sp.	Mesophotic Reef	Photo	Fig. 4	Unknown	N/A
Balistidae	<i>Balistes capriscus</i> Gmelin, 1789	Mesophotic Rhodolith	Stereo-BRUVS	Fig. 3	AA / M	VU



FIGURE 4 | New records of fishes at the mesophotic ecosystems. **A.** *Chromis enchrysur* (~ 10 cm total length); **B.** *Balistes capriscus* (~ 30 cm total length); **C.** *Chromis scotti* (~ 7.5 cm total length); **D.** *Prognathodes guyanensis* (~ 15 cm total length); **E.** *Synodus* sp. (~ 15 cm total length); **F.** *Scorpaena* sp. (~ 7.5 cm total length); **G.** *Psilotris* sp. (~ 5 cm total length); and **H.** *Cosmocampus profundus* (white arrow; ~ 15 cm total; **I.** *Lutjanus buccanella* (~ 50 cm total length). Photos by L. A. Rocha (**A, C-G**) and stereo-BRUVS (**B, Hand I**). *Tosanoide* sp. is under description and its picture is not shown.

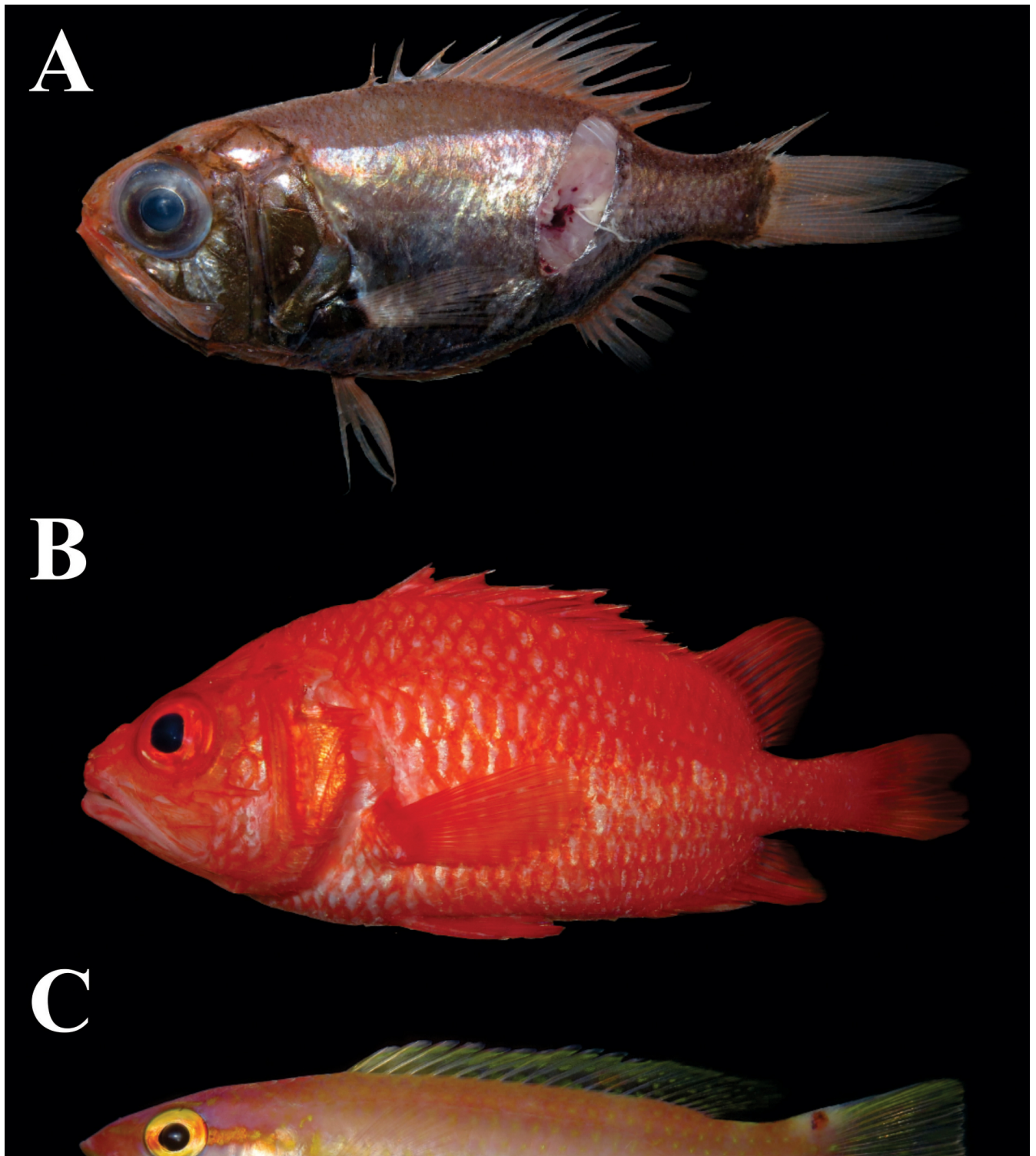
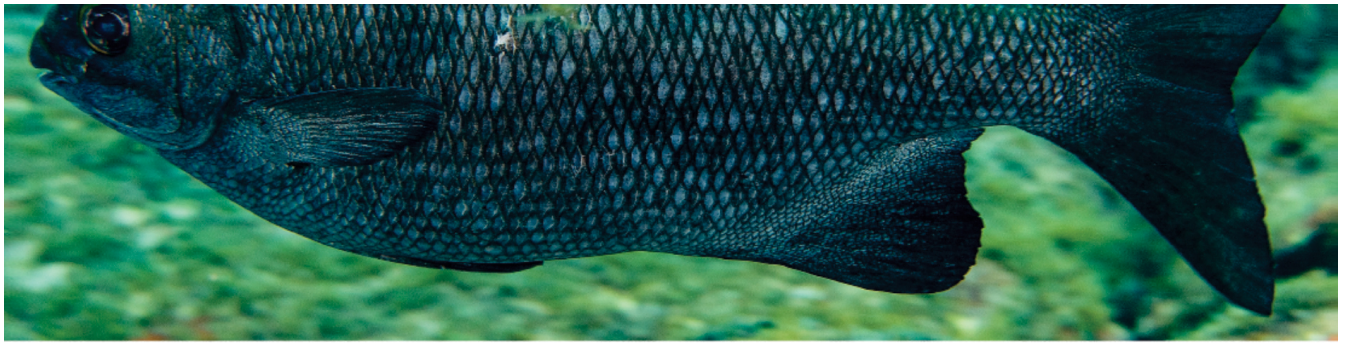


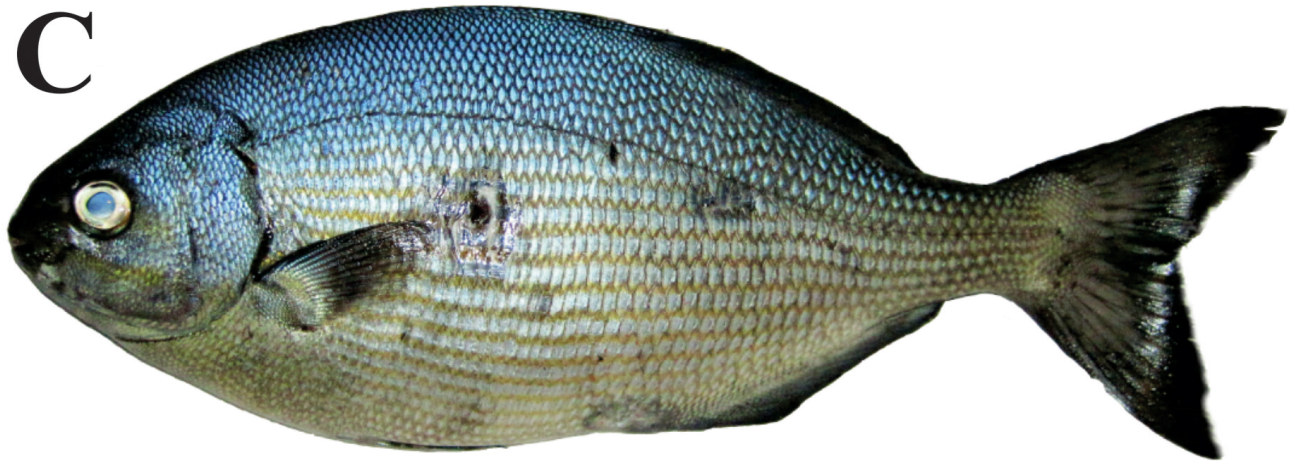


FIGURE 5 | New records of fishes from the mesophotic ecosystems collected and photographed in aquarium. **A.** *Aulotrachichthys argyrophanus* (~ 6.5 cm total length; CIUFES 3909); **B.** *Corniger spinosus* (~ 15 cm total length; CIUFES 3922); **C.** *Decodon puellaris* (~ 7.5 cm total length; CIUFES 3914); and **D.** *Pronotogrammus martinicensis* (~ 20 cm total length; CIUFES 3939 / 3960). Photos by J. L. Gasparini.





C



D



FIGURE 6 | New records of fishes from the euphotic ecosystems. **A.** *Kyphosus bigibbus* (~ 25 cm total length); **B.** *Kyphosus cinerascens* (~ 25 cm total length); **C.** *Kyphosus vaigiensis* (~ 25 cm total length; CIUFES 4050); and **D.** *Pseudogramma gregoryi* (~ 6.5 cm total length; CIUFES 4029). Photos **A**, **B** and **C** by J. L. Gasparini and photo **D** by R. M. Macieira. *Apogon pseudomaculatus* (CIUFES 3957) is not shown.

DISCUSSION

Fernando de Noronha Archipelago harbours the greatest richness of marine fish among the oceanic islands of the South Atlantic ([Floeter et al., 2008](#); [Pinheiro et al., 2018a](#)). The 19 new records presented here represent an increase of 8.2% in its marine ichthyofauna, now composed of 250 species and 77 families. Fernando de Noronha Archipelago is now between 22% and 36% richer, in fishes, than Trindade Island, Santa Helena Island, Ascension Island, Rocas Atoll and St. Paul's Archipelago (see [Wirtz et al., 2017](#); [Pinheiro et al., 2018a, 2020](#); [Brown et al., 2019](#)). This higher fish richness is probably related to FN being the largest and oldest island, situated relatively close to the continental shore, and being the most studied oceanic island in Brazil.

Even though we have also explored shallow ecosystems, this is the first systematic survey of the fish biodiversity of FN mesophotic ecosystems. Despite the logistical difficulties and risks associated with this type of exploration, our effort was rewarded as most of the new records (74%) came from the mesophotic ecosystems. In fact, we still know very little about mesophotic reefs in comparison to shallow ones, albeit they represent about 80% of the potential reef habitat worldwide ([Pyle, Copus, 2019](#)). Although they have been considered potential refuges for shallow water organisms and less susceptible to human and natural impacts, mesophotic reefs are increasingly being recognized as unique ecosystems, home to largely distinct and independent communities that are also impacted and in need of protection as much as shallow reefs ([Rocha et al., 2018](#); [Pyle, Copus, 2019](#)). As reported

elsewhere ([Rocha et al., 2018](#)), we found plastic trash and fishing debris (in 6% and 18% of the visual censuses, respectively) in mesophotic ecosystems explored around FN ([Fig. 7](#)), evidence of human impacts, which are even more noticeable in the intertidal and shallow ecosystems. Despite an island-wide ban on single use plastics ([Pernambuco, 2018](#)) and the presence of a program to eliminate plastic bags from the island, most of the goods that can be obtained in stores come wrapped in plastic.



FIGURE 7 | Evidence of human impacts (arrows) by fishing debris, plastics and other trash found in the ecosystems explored around the Fernando de Noronha Archipelago. **A.** and **B.** Mesophotic (> 30 m deep); **C.** Intertidal; and **D.** Shallow ecosystems (≤ 30 m deep). Photos **A** and **B** by L. A. Rocha and photos **C** and **D** by J. L. Gasparini.

Several studies addressing the diversity, biology and ecology of the shallow water fish assemblages of FN have been carried out (e.g., [Krajewski, Floeter, 2011](#); [Ilarri et al., 2017](#)). However, even for the relatively well explored euphotic zone, we obtained new records such as *Apogon pseudomaculatus* Longley, 1932 and *Pseudogramma gregoryi* (Breder, 1927) ([Tab. 1](#)), reinforcing the need for further studies and a better understanding of the local cryptobenthic fish diversity. Currently, the cryptobenthic fishes represent only about 17% (~ 42 species) of the ichthyofauna of FN. Due to its small size and cryptic behaviour, most cryptobenthic fishes cannot be properly accessed by standard techniques (e.g., underwater visual censuses and videos). Thus, in order to increase our knowledge of this hidden fish diversity, the scientific use of anaesthetics to collect specimens should be promoted ([Collette et al., 2003](#); [Williams et al., 2010](#)). The importance of these underestimated assemblages of cryptobenthic fishes goes far beyond diversity. In a recent study, [Brandl et al. \(2019\)](#) showed that through their extraordinary larval dynamics, rapid growth, and extreme mortality, the hyperdiverse assemblages of abundant, small, and short-lived cryptobenthic species appear to be a critical functional group on the trophodynamics of coral reefs.

Regarding the species registered in the mesophotic ecosystems, we emphasize that this is only the second record of the genus *Tosanoides* for the Atlantic Ocean, with a new species previously recorded on mesophotic reefs of St. Paul's Archipelago ([Pinheiro et al., 2018b](#)). The present record corroborates the hypothesis that this genus is probably widely distributed in peripheral Atlantic sites ([Pinheiro et al., 2018b](#)). Differences in colour pattern suggest *Tosanoides* sp. from FN might be a new species, different from *Tosanoides aphrodite* Pinheiro, Rocha & Rocha, 2018, and genetic analyses are being carried out to confirm the species identity. Similarly, *Aulotrachichthys argyrophanus* (Woods, 1961) was previously known only from the type locality in the Southwest Atlantic, on the continental shelf slope off the Amazon River mouth, northern Brazil ([Froese, Pauly, 2019](#); [Moore, 2019](#)). Finally, *Cosmocampus profundus* (Herald, 1965) is for the first time recorded in Brazil, previously known to occur only from eastern Florida to south Caribbean ([Robertson, Van Tassell, 2019](#)).

Another curious new record is the common *B. capriscus*, an ampho-Atlantic species widespread in the Atlantic Ocean ([Liu et al., 2015](#); [Froese, Pauly, 2019](#)), which is also present at Trindade Island ([Miranda Ribeiro, 1919](#)) and St. Paul's Archipelago ([Pinheiro et al., 2020](#)). At FN and St. Paul's Archipelago, the species has been observed several times in groups of up to four individuals. In contrast, the only record of this species on Trindade Island dates from 1916, when one individual was collected during a scientific expedition by the National Museum of Rio de Janeiro ([Miranda-Ribeiro, 1919](#)). All recent extensive samplings around Trindade, in both euphotic and mesophotic ecosystems, including the use of technical dive ([Pereira-Filho et al., 2011](#)) and BRUVS ([Pimentel et al., 2020](#)), yielded no record for this species. New records of common and large fishes such as *B. capriscus* may result from the attractiveness of the BRUVS bait and sampling in the mesophotic ecosystems, however this does not appear to be the case here. Alternatively, this could represent a recent colonization and successful establishment in these oceanic islands (e.g., [Mazzei et al., 2019](#)). These observations involving colonization, establishment and extinction are in accordance with the Theory of Island Biogeography (e.g., [Pinheiro et al., 2017](#)), representing the main drivers balancing island diversity.

Other probable new species include *Psilotris* sp., *Scorpaena* sp. and *Synodus* sp., which have been only photographed. The goby resembles a *Psilotris* species (Luke Tornabene, 2020, pers. comm.), both in colour/appearance and in meristics: VII, 10 dorsal fin spines, with no visible scales and split pelvic fins. *Psilotris* sp. is closest in appearance to *Psilotris kaufmani* Greenfield, Findley & Johnson, 1993, but differs from it in having a unique body coloration, and not having a dark upper pectoral fin. The scorpaenid seems to belong to the genus *Scorpaena* (Alfredo Carvalho-Filho, 2020, pers. comm.) because the specimen has several pectoral fin rays well branched, especially the lower ones, whereas species of *Pontinus* have all rays unbranched. This *Scorpaena* sp. is different from the undescribed St. Paul's Archipelago species (Feitoza et al., 2003; CIUFES 0349), which has a snout larger than the eye. The synodontid is different from all other species occurring in Brazil (Alfredo Carvalho-Filho, 2020, pers. comm.). It differs from *Synodus synodus* (Linnaeus, 1758) in not having a characteristic black spot at the tip of the snout; from *Synodus intermedius* (Spix & Agassiz, 1829) and *Synodus macrostigmus* Frable, Luther & Baldwin, 2013 in not having a dark spot at upper right corner of the operculum; and from *Synodus poeyi* Jordan, 1887 in overall coloration, the latter being bluish. Therefore, these three species are likely undescribed. Considering that four possible new species were disclosed in two hours of exploration of the lower mesophotic ecosystems (four divers with an average of 30 min each), the discovery rate herein reported is of two new species per hour, which is consistent with recent findings in other unexplored mesophotic ecosystems of the world ([Pinheiro et al., 2019](#); [Pyle et al., 2019](#)).

Here we have shown that the mesophotic ecosystems and the shallow cryptobenthic ichthyofauna need to be better studied, even in well-studied oceanic islands such as FN. We emphasize the need for protection of the mesophotic ecosystems of FN, looking for ways to conciliate activities such as fishing and tourism, with the preservation of the unique biodiversity and ecosystems found at mesophotic depths. As with shallow reefs, significant progress in the conservation of mesophotic ecosystems of FN could be reached by expanding the no-take zone of the Marine National Park beyond the 50 m isobath, or by creating some fishing exclusion zones inside the sustainable use MPA ([Araújo, Bernard, 2016](#)).

ACKNOWLEDGEMENTS

We are grateful to NGO Voz da Natureza for supporting the project, and to Fundação Grupo Boticário de Proteção à Natureza and Hope for Reefs initiative (California Academy of Sciences) for funding. This work was partially supported by the Brazilian LTER Coastal Habitats of Espírito Santo (PELD-HCES; CNPq/FAPES grant #441243/2016-9) and by the Coordenação de Aperfeiçoamento de Pessoal de Nível Superior - Brasil (CAPES) - Finance Code 001. Caio R. Pimentel also thanks the Fundação Estadual de Amparo à Pesquisa do Estado do Espírito Santo (FAPES) for the PhD scholarship. Tommaso Giarrizzo received a productivity grant from Conselho Nacional de Desenvolvimento Científico e Tecnológico (CNPq #311078/2019-2). We would like to thank our great friend Mauricio Vilella and the staff at his Pizzaria Namoiita for all their care during our stay in Noronha. We are very grateful to Patrick Muller, Ismael Escote and the great team of Atlantis Divers for all logistical and technical diving support. We also thank Raphael M. Macieira for helping with the fieldwork; Mauritius V. Bell and Allison Shafer for technical diving support; Zaira Matheus for sharing photos and deep dive sites; Kathiani V. Bastos (CIUFES) and Cristina Castillo for help with logistics; José Carlos Marenga, Alexandre Carvalho and the crew of the vessel Capitania I; the whole Marine National Park team for their support; Gabriel Cardozo-Ferreira, Alfredo Carvalho-Filho and Luke Tornabene kindly helped us identify several species. Fee waivers, administrative and environmental authorizations were provided by the Administration of Fernando de Noronha (ATDEFN), the Brazilian Environmental Agency (ICMBio, license #64991-3), Universidade Federal do Espírito Santo (PRPPG and Reitoria) and Conselho Nacional de Desenvolvimento Científico e Tecnológico (CNPq). Fish collections followed the California Academy of Sciences Institutional Animal Care and Use Committee (IACUC) policies and procedures.

REFERENCES

- Afonso AS, Garla R, Hazin FHV. Tiger sharks can connect equatorial habitats and fisheries across the Atlantic Ocean basin. *PLoS One*. 2017; 12(9): e0184763. <https://doi.org/10.1371/journal.pone.0184763> [[Links](#)]
- Almeida FFM. Ilhas oceânicas brasileiras e suas relações com a tectônica atlântica. *Terrae Didactica*. 2006; 2(1):3-18 [[Links](#)]
- Andrades R, Reis-Filho JA, Macieira RM, Giarrizzo T, Joyeux J-C. Endemic fish species structuring oceanic intertidal reef assemblages. *Sci Rep*. 2018; 8:10791. <https://doi.org/10.1038/s41598-018-29088-0> [[Links](#)]
- Andradi-Brown DA, Macaya-Solis C, Exton DA, Gress E, Wright G, Rogers AD. Assessing Caribbean shallow and mesophotic reef fish communities using Baited-Remote Underwater Video (BRUV) and Diver-Operated Video (DOV) survey techniques. *PLoS One*. 2016; 11(12):e0168235. <https://doi.org/10.1371/journal.pone.0168235> [[Links](#)]
- Araújo JL, Bernard E. Management effectiveness of a large marine protected area in Northeastern Brazil. *Ocean Coast Manag*. 2016; 130: 43-49. <https://doi.org/10.1016/j.ocecoaman.2016.05.009> [[Links](#)]
- Batista H, Zill J, Veras D, Hazin F, Oliveira P, Marins Y, Oliveira D, Pereira R, Tolotti M, Silva M. New records of reef fishes (Teleostei: Perciformes) in the Rocas Atoll Biological Reserve, off northeastern Brazil. *Check List*. 2012; 8(3):584-88. <https://doi.org/10.15560/8.3.584> [[Links](#)]
- Brandl SJ, Tornabene L, Goatley CH, Casey JM, Morais RA, Côté IM, Baldwin CC, Parravicini V, Schiettekatte NMD, Bellwood DR. Demographic dynamics of the smallest marine vertebrates fuel coral reef ecosystem functioning. *Science*. 2019; 364(6446):1189-92. <https://doi.org/10.1126/science.aav3384> [[Links](#)]
- Brasil. Decreto no 92.755, de 5 de junho de 1986. *Diário Oficial da União, Poder Executivo, Brasília, DF, 6 jun. 1986*. Available at: http://www.planalto.gov.br/ccivil_03/decreto/1980-1989/1985-1987/D92755.htm [[Links](#)]
- Brasil. Decreto no 96.693, de 14 de setembro de 1988. *Diário Oficial da União, Poder Executivo, Brasília, DF, 15 set. 1988*. Available at: <https://www2.camara.leg.br/legin/fed/decret/1988/decreto-96693-14-setembro-1988-447461-publicacaooriginal-1-pe.html> [[Links](#)]
- Brown J, Beard A, Clingham E, Fricke R, Henry L, Wirtz P. The fishes of St Helena Island, central Atlantic Ocean- new records and an annotated check-list. *Zootaxa*. 2019; 4543(2):151-94. <http://dx.doi.org/10.11646/zootaxa.4543.2.1> [[Links](#)]
- Carvalho-Filho A, Macena BCL, Nunes DM. A new species of Anthiadinae (Teleostei: Serranidae) from São Pedro and São Paulo Archipelago, Brazil, Equatorial Atlantic. *Zootaxa*. 2016; 4139(4):585-92.

<http://dx.doi.org/10.11646/zootaxa.4139.4.10> [Links]

Collette BB, Williams JT, Thacker CE, Smith ML. Shore fishes of Navassa Island, West Indies: a case study on the need for rotenone sampling in reef fish biodiversity studies. *Aqua*. 2003; 6(3):89-131. [Links]

Ferreira CEL, Floeter SR, Gasparini JL, Ferreira BP, Joyeux J-C. Trophic structure patterns of Brazilian reef fishes: a latitudinal comparison. *J Biogeogr*. 2004; 31(7):1093-106. <https://doi.org/10.1111/j.1365-2699.2004.01044.x> [Links]

Floeter SR, Rocha LA, Robertson DR, Joyeux J-C, Smith-Vaniz WF, Wirtz P, Edwards AJ, Barreiros JP, Ferreira CEL, Gasparini JL, Brito A, Falcón JM, Bowen BW, Bernardi G. Atlantic reef fish biogeography and evolution. *J Biogeogr*. 2008; 35(1):22-47. <https://doi.org/10.1111/j.1365-2699.2007.01790.x> [Links]

Francini-Filho RB, Velásquez VM, Silva MB, Rosa MR, Sumida PYG, Pinheiro HT, Rocha LA, Ferreira CEL, Francini CLB, Rosa RS. Brazil. In: Loya Y, Puglise K, Bridge T, editors. *Mesophotic Coral Ecosystems*. Cham: Springer; 2019. p.163-198. [Links]

Froese R, Pauly D. FishBase. World Wide Web electronic publication. Version (12/2019). 2019. Available from: <https://www.fishbase.org> [Links]

Garla RC, Chapman DD, Wetherbee BM, Shivji M. Movement patterns of young Caribbean reef sharks, *Carcharhinus perezii*, at Fernando de Noronha Archipelago, Brazil: the potential of marine protected areas for conservation of a nursery ground. *Mar Biol*. 2006; 149:189-99. <https://doi.org/10.1007/s00227-005-0201-4> [Links]

Hachich NF, Bonsall MB, Arraut EM, Barneche DR, Lewinsohn TM, Floeter SR. Island biogeography: patterns of marine shallow-water organisms in the Atlantic Ocean. *J Biogeogr*. 2015; 42(10):1871-1882. <https://doi.org/10.1111/jbi.12560> [Links]

Instituto Brasileiro do Meio Ambiente e dos Recursos Naturais Renováveis (Ibama). Plano de Manejo do Parque Nacional Marinho de Fernando de Noronha. Brasília, 1990. Available from: https://www.icmbio.gov.br/portal/images/stories/biodiversidade/PARNA_MARINHA_DE_FERNANDO_DE_NORONHA.pdf [Links]

Instituto Chico Mendes de Conservação da Biodiversidade (ICMBio). Plano de Manejo da Área de Proteção Ambiental de Fernando de Noronha - Rocas - São Pedro e São Paulo. Brasília, 2017. Available from: https://www.icmbio.gov.br/portal/images/stories/plano-de-manejo/plano_de_manejo_parna_fernando-de-noronha.pdf [Links]

Ilarri MI, Souza AT, Rosa RS. Community structure of reef fishes in shallow waters of the Fernando de Noronha archipelago: effects of different levels of environmental protection. *Mar Freshwater Res*. 2017; 68(7): 1303-316. <https://doi.org/10.1071/MF16071> [Links]

Knudsen SW, Clements KD. Revision of the fish family Kyphosidae (Teleostei: Perciformes). *Zootaxa*. 2013; 3751(1):1-101. <https://doi.org/10.11646/zootaxa.3751.1.1> [Links]

Kosaki RK, Pyle RL, Leonard JC, Hauk BB, Whitton RK, Wagner D. 100% endemism in mesophotic reef fish assemblages at Kure Atoll, Hawaiian Islands. *Mar Biodivers*. 2017; 47:783-84. <https://doi.org/10.1007/s12526-016-0510-5> [Links]

Krajewski JP, Floeter SR. Reef fish community structure of the Fernando de Noronha Archipelago (Equatorial Western Atlantic): the influence of exposure and benthic composition. *Environ Biol Fish*. 2011; 92:25-40. <https://doi.org/10.1007/s10641-011-9813-3> [Links]

Liu J, Zapfe G, Shao K-T, Leis JL, Matsuura K, Hardy G, Liu M, Tyler J. *Balistes capriscus*. The IUCN Red List of Threatened Species 2015: e.T193736A97662794. (errata version published in 2016). Downloaded on 06 March 2020. [Links]

Losos J, Ricklefs R. Adaptation and diversification on islands. *Nature*. 2009; 457:830-36. <https://doi.org/10.1038/nature07893> [Links]

Macieira RM, Simon T, Pimentel CR, Joyeux J-C. Isolation and speciation of tidepool fishes as a consequence of Quaternary sea-level fluctuations. *Environ Biol Fish*. 2015; 98:385-93. <https://doi.org/10.1007/s10641-014-0269-0> [Links]

Matheus Z, Francini-Filho RB, Pereira-Filho GH, Moraes FC, Moura RLd, Brasileiro RPS, Amado-Filho GM. Benthic reef assemblages of the Fernando de Noronha Archipelago, tropical South-west Atlantic: Effects of depth, wave exposure and cross-shelf positioning. *PLoS One*. 2019; 14(1):e0210664. <https://doi.org/10.1371/journal.pone.0210664> [Links]

Mazzei EF, Pinheiro HT, Morais RA, Floeter SR, Veras DP, Queiroz LV, Joyeux J-C, Ferreira CEL. Parrotfishes of the genus *Scarus* in southwestern Atlantic oceanic reef environments: occasional pulse or initial colonization?. *Mar Biodivers*. 2019; 49:555-61. <https://doi.org/10.1007/s12526-017-0827-8> [Links]

Medeiros PR, Rosa RS, Francini-Filho RB. Dynamics of fish assemblages on a continuous rocky reef and adjacent unconsolidated habitats at Fernando de Noronha Archipelago, tropical western Atlantic. *Neotrop Ichthyol*. 2011; 9(4):869-79. <https://doi.org/10.1590/S1679-62252011005000048> [Links]

- Menezes NA. A new species of *Paratrachichthys* from the coast of Brazil (Pisces, Trachichthyidae). Pap Avulsos Zool. 1971; 25:143-48 [[Links](#)]
- Miranda Ribeiro A. A fauna vertebrada da Ilha da Trindade. Arch Mus Nac (Rio de J). 1919; 22:171-194 [[Links](#)]
- Moore J. *Aulotrachichthys argyrophanus*. The IUCN Red List of Threatened Species 2019: e.T20662062A20682663. <https://dx.doi.org/10.2305/IUCN.UK.2019-2.RLTS.T20662062A20682663.en>. Downloaded on 06 March 2020. [[Links](#)]
- Moura RL, Rodrigues MCM, Francini-Filho RB, Sazima I. Unexpected richness of reef corals near the southern Amazon River mouth. Coral Reefs. 1999; 18:170. <https://doi.org/10.1007/s003380050175> [[Links](#)]
- Nelson JS, Grande TC, Wilson MVH. Fishes of the world. Hoboken, New Jersey: Wiley & Sons; 2016. [[Links](#)]
- Pereira-Filho GH, Amado-Filho GM, Guimarães SMPB, Moura RL, Sumida PYG, Abrantes DP, Bahia RG, Güth AZ, Jorge RR, Francini Filho RB. Reef fish and benthic assemblages of the Trindade and Martin Vaz Island group, southwestern Atlantic. Braz J Oceanogr. 2011; 59(3):201-12. <https://doi.org/10.1590/S1679-87592011000300001> [[Links](#)]
- Pernambuco. Decreto Distrital no 002, de 12 de dezembro de 2018. Diário Oficial do Estado de Pernambuco, Poder Executivo, Recife, PE, 13 dez. 2018. Available at: <http://www.noronha.pe.gov.br/instLegislacao.php?cat=3> [[Links](#)]
- Pimentel CR, Andrades R, Ferreira CEL, Gadig OBF, Harvey ES, Joyeux J-C, Giarrizzo T. BRUVS reveal locally extinct shark and the way for shark monitoring in Brazilian oceanic islands. J Fish Biol. 2020; 96(2):539-42. <https://doi.org/10.1111/jfb.14228> [[Links](#)]
- Pinheiro HT, Bernardi G, Simon T, Joyeux J-C, Macieira RM, Gasparini JL, Rocha C, Rocha LA. Island biogeography of marine organisms. Nature. 2017; 549:82-85. <https://doi.org/10.1038/nature23680> [[Links](#)]
- Pinheiro HT, Mazzei E, Moura RL, Amado-Filho GM, Carvalho-Filho A, Braga AC, Costa PAS, Ferreira BP, Ferreira CEL, Floeter SR, Francini-Filho RB, Gasparini JL, Macieira RM, Martins AS, Olavo G, Pimentel CR, Rocha LA, Sazima I, Simon T, Teixeira JB, Xavier LB, Joyeux J-C. Fish biodiversity of the Vitória-Trindade Seamount Chain, southwestern Atlantic: an updated database. PLoS One. 2015; 10(3):e0118180. <https://doi.org/10.1371/journal.pone.0118180> [[Links](#)]
- Pinheiro HT, Rocha C, Rocha LA. *Tosanoides aphrodite*, a new species from mesophotic coral ecosystems of St. Paul's Rocks, Mid Atlantic Ridge (Perciformes, Serranidae, Anthiadiinae). ZooKeys. 2018b; 786:105-115. <https://doi.org/10.3897/zookeys.786.27382> [[Links](#)]
- Pinheiro HT, Rocha LA, Macieira RM, Carvalho-Filho A, Anderson AB, Bender MG, Di Dario F, Ferreira CEL, Figueiredo-Filho J, Francini-Filho R, Gasparini JL, Joyeux J-C, Luiz OJ, Mincarone MM, Moura RL, Nunes JACC, Quimbayo JP, Rosa RS, Sampaio CLS, Sazima I, Simon T, Vila-Nova DA, Floeter SR. South-western Atlantic reef fishes: Zoogeographical patterns and ecological drivers reveal a secondary biodiversity centre in the Atlantic Ocean. Divers Distrib. 2018a; 24(7):951-65. <https://doi.org/10.1111/ddi.12729> [[Links](#)]
- Pinheiro HT, Shepherd B, Castillo C, Abesamis RA, Copus JM, Pyle RL, Greene BD, Coleman RR, Whitton RK, Thillainath E, Bucol AA, Birt M, Catania D, Bell MV, Rocha LA. Deep reef fishes in the world's epicenter of marine biodiversity. Coral Reefs. 2019; 38:985-95. <https://doi.org/10.1007/s00338-019-01825-5> [[Links](#)]
- Pinheiro HT, Macena BCL, Francini-Filho RB, Ferreira CEL, Albuquerque FV, Bezerra NPA, Carvalho-Filho A, Ferreira RCP, Luiz OJ, Mello TJ, Mendonça SA, Nunes DM, Pimentel CR, Pires AMA, Soares-Gomes A, Viana DL, Hazin FHV, Rocha LA. Fish biodiversity of Saint Peter and Saint Paul's Archipelago, Mid-Atlantic Ridge, Brazil: new records and a species database. J Fish Biol. 2020; 97(4):1143-53. <https://doi.org/10.1111/jfb.14484> [[Links](#)]
- Pyle RL, Boland R, Bolick H, Bowen BW, Bradley CJ, Kane C, Kosaki RK, Langston R, Longenecker K, Montgomery A, Parrish FA, Popp BN, Rooney J, Smith CM, Wagner D, Spalding HL. A comprehensive investigation of mesophotic coral ecosystems in the Hawaiian Archipelago. PeerJ. 2016; 4:e2475. <https://doi.org/10.7717/peerj.2475> [[Links](#)]
- Pyle RL, Copus MJ. Mesophotic coral ecosystems: introduction and overview. In: Loya Y, Puglise KA, Bridge TCL, editors. Mesophotic coral ecosystems. Cham: Springer; 2019. p.3-27. [[Links](#)]
- Pyle RL, Kosaki RK, Pinheiro HT, Rocha LA, Whitton RK, Copus JM. Fishes: biodiversity. In: Loya Y, Puglise KA, Bridge TCL, editors. Mesophotic coral ecosystems. Cham: Springer; 2019. p.749-77. [[Links](#)]
- Quimbayo JP, Dias MS, Kulbicki M, Mendes TC, Lamb RW, Johnson AF, Aburto-Oropeza O, Alvarado JJ, Bocos AA, Ferreira CEL, Garcia E, Luiz OJ, Mascareñas-Osorio I, Pinheiro HT, Rodriguez-Zaragoza F, Salas E, Zapata FA, Floeter SR. Determinants of reef fish assemblages in Tropical Oceanic Islands. Ecography. 2019; 42(1):77-87. <https://doi.org/10.1111/ecog.03506> [[Links](#)]
- Robertson DR, Van Tassell J. Shorefishes of the Greater Caribbean: online information system. Version 2.0. Balboa: Smithsonian Tropical Research Institute; 2019. Available from: <https://biogeodb.stri.si.edu/caribbean/en/pages> [[Links](#)]
- Rocha LA, Pinheiro HT, Shepherd B, Papastamatiou YP, Luiz OJ, Pyle RL, Bongaerts P. Mesophotic coral ecosystems are threatened and ecologically distinct from shallow water reefs. Science. 2018; 361(6399):281-84.

<https://doi.org/10.1126/science.aag1614> [[Links](#)]

Rodríguez-Rey GT, Carvalho Filho A, Araújo ME, Solé-Cava AM. Evolutionary history of *Bathygobius* (Perciformes: Gobiidae) in the Atlantic biogeographic provinces: a new endemic species and old mitochondrial lineages. *Zool J Linnean Soc.* 2018; 182(2):360-84. <https://doi.org/10.1093/zoolinnean/zlx026> [[Links](#)]

Rosa MR, Alves AC, Medeiros DV, Coni EOC, Ferreira CM, Ferreira BP, Rosa RS, Amado-Filho GM, Pereira-Filho GH, Moura RL, Thompson FL, Sumida PYG, Francini-Filho RB. Mesophotic reef fish assemblages of the remote St. Peter and St. Paul's Archipelago, Mid-Atlantic Ridge, Brazil. *Coral Reefs.* 2015; 35:113-23. <https://doi.org/10.1007/s00338-015-1368-x> [[Links](#)]

Sazima I, Grossman A, Sazima C. Deep cleaning: a wrasse and a goby clean reef fish below 60 m depth in the tropical south-western Atlantic. *Mar Biodivers Rec.* 2010; 3:E60. <https://doi.org/10.1017/S1755267210000497> [[Links](#)]

Simon T, Macieira RM, Joyeux J-C. The shore fishes of the Trindade-Martin Vaz insular complex: an update. *J Fish Biol.* 2013; 82(6):2113-27. <https://doi.org/10.1111/jfb.12126> [[Links](#)]

Simon T, Pinheiro HT, Moura RL, Carvalho-Filho A, Rocha LA, Martins AS, Mazzei EF, Francini-Filho RB, Amado-Filho GM, Joyeux J-C. Mesophotic fishes of the Abrolhos Shelf, the largest reef ecosystem in the South Atlantic. *J Fish Biol.* 2016; 89(1):990-1001. <https://doi.org/10.1111/jfb.12967> [[Links](#)]

Sinniger F, Ballantine DL, Bejarano I, Colin PL, Pochon X, Pomponi SA, Puglise KA, Pyle RL, Reaka ML, Spalding HL, Weil E. Biodiversity of mesophotic coral ecosystems. In: Baker EK, Puglise KA, Harris PT, editors. *Mesophotic coral ecosystems - a lifeboat for coral reefs? Nairobi and Arendal: The United Nations Environment Programme and GRID-Arendal*; 2016. p.50-62. [[Links](#)]

Smith-Vaniz WF, Tornabene L, Macieira RM. Review of Brazilian jawfishes of the genus *Opistognathus* with descriptions of two new species (Teleostei, Opistognathidae). *Zookeys.* 2018; 794:95-133. <https://doi.org/10.3897/zookeys.794.26789> [[Links](#)]

Vaske Jr T, Lessa RP, Nóbrega MF, Montealegre-Quijano S, Marcante Santana F, Bezerra Jr JL. A checklist of fishes from Saint Peter and Saint Paul Archipelago, Brazil. *J Appl Ichthyol.* 2005; 21(1):75-79. <https://doi.org/10.1111/j.1439-0426.2004.00600.x> [[Links](#)]

Williams JT, Carpenter KE, Van Tassell JL, Hoetjes P, Toller W, Etnoyer P, Smith M. Biodiversity assessment of the fishes of Saba Bank Atoll, Netherlands Antilles. *PLoS One.* 2010; 5(5):e10676. <https://doi.org/10.1371/journal.pone.0010676> [[Links](#)]

Wirtz P, Bingeman J, Bingeman J, Fricke R, Hook TJ, Young J. The fishes of Ascension Island, central Atlantic Ocean: new records and an annotated checklist. *J Mar Biol Assoc UK.* 2017; 97(4):783-98. <https://doi.org/10.1017/S0025315414001301> [[Links](#)]

ADDITIONAL NOTES

HOW TO CITE THIS ARTICLE Pimentel CR, Rocha LA, Shepherd B, Phelps T, Joyeux J-C, Martins AS, Stein CE, Teixeira JB, Gasparini JL, Reis-Filho JA, Garla RC, Francini-Filho RB, Delfino SDT, Mello TJ, Giarrizzo T, Pinheiro HT. Mesophotic ecosystems at Fernando de Noronha Archipelago, Brazil (South-western Atlantic), reveal unique ichthyofauna and need for conservation. *Neotrop Ichthyol.* 2020; 18(4):e200050. <https://doi.org/10.1590/1982-0224-2020-0050>

Received: June 16, 2020; Accepted: October 30, 2020

Edited by

Fernando Gibran

Correspondence

Caio R. Pimentel caiopimentelr@gmail.com

Author's Contribution

Caio R. Pimentel: Conceptualization, Data curation, Formal analysis, Funding acquisition, Investigation, Methodology, Project administration, Resources, Software, Supervision, Validation, Visualization, Writing-original draft, Writing-review and editing.

Luiz A. Rocha: Conceptualization, Data curation, Formal analysis, Funding acquisition, Investigation, Methodology, Project administration, Resources, Software, Supervision, Validation, Visualization, Writing-original draft, Writing-review and editing.

Bart Shepherd: Conceptualization, Data curation, Formal analysis, Funding acquisition, Investigation, Methodology, Project administration, Resources, Software, Supervision, Validation, Visualization, Writing-original draft, Writing-review and editing.

Tyler A. Y. Phelps: Conceptualization, Data curation, Formal analysis, Funding acquisition, Investigation, Methodology, Project administration, Resources, Software, Supervision, Validation, Visualization, Writing-original draft, Writing-review and editing.

Jean-Christophe Joyeux: Conceptualization, Data curation, Formal analysis, Funding acquisition, Investigation, Methodology, Project administration, Resources, Software, Supervision, Validation, Visualization, Writing-original draft, Writing-review and editing.

Aginaldo S. Martins: Conceptualization, Data curation, Formal analysis, Funding acquisition, Methodology, Project administration, Resources, Software, Supervision, Validation, Visualization, Writing-original draft, Writing-review and editing.

Carlos Eduardo Stein: Conceptualization, Data curation, Formal analysis, Funding acquisition, Investigation, Methodology, Project administration, Resources, Software, Supervision, Validation, Visualization, Writing-original draft, Writing-review and editing.

João B. Teixeira: Conceptualization, Data curation, Formal analysis, Funding acquisition, Investigation, Methodology, Project administration, Resources, Software, Supervision, Validation, Visualization, Writing-original draft, Writing-review and editing.

João Luiz Gasparini: Conceptualization, Data curation, Formal analysis, Funding acquisition, Investigation, Methodology, Project administration, Resources, Software, Supervision, Validation, Visualization, Writing-original draft, Writing-review and editing.

José Amorim Reis-Filho: Conceptualization, Data curation, Formal analysis, Funding acquisition, Investigation, Methodology, Project administration, Resources, Software, Supervision, Validation, Visualization, Writing-original draft, Writing-review and editing.

Ricardo C. Garla: Conceptualization, Data curation, Formal analysis, Funding acquisition, Investigation, Methodology, Project administration, Resources, Software, Supervision, Validation, Visualization, Writing-original draft, Writing-review and editing.

Ronaldo B. Francini-Filho: Conceptualization, Data curation, Formal analysis, Funding acquisition, Methodology, Project administration, Resources, Software, Supervision, Validation, Visualization, Writing-original draft, Writing-review and editing.

Stephanie D. T. Delfino: Conceptualization, Data curation, Formal analysis, Funding acquisition, Investigation, Methodology, Project administration, Resources, Software, Supervision, Validation, Visualization, Writing-original draft, Writing-review and editing.

Thayná J. Mello: Conceptualization, Data curation, Formal analysis, Funding acquisition, Methodology, Project administration, Resources, Software, Supervision, Validation, Visualization, Writing-original draft, Writing-review and editing.

Tommaso Giarrizzo: Conceptualization, Data curation, Formal analysis, Funding acquisition, Methodology, Project administration, Resources, Software, Supervision, Validation, Visualization, Writing-original draft, Writing-review and editing.

Hudson T. Pinheiro: Conceptualization, Data curation, Formal analysis, Funding acquisition, Investigation, Methodology, Project administration, Resources, Software, Supervision, Validation, Visualization, Writing-original draft, Writing-review and editing.

Competing Interests

The authors declare no competing interests.

Ethical Statement

The Brazilian Environmental Agency (ICMBio, license #64991-3).

© 2020 The Authors



This is an open-access article distributed under the terms of the Creative Commons Attribution License

Universidade Estadual de Maringá
Núcleo de Pesquisas em Limnologia, Ictiologia e Aquicultura/Coleção Ictiologia
Av. Colombo, 5790
87020-900 Maringá, PR, Brasil
Tel.: (55 44)3011 4632



neoichth@nupelia.uem.br

