

APPENDIX II

GASTROPOD MOLLUSCS COLLECTED BY J. L. GRESSITT

List prepared by Yoshio Kondo

Marine species

- Turbinidae : Turbo argyrostomus L.? --Mejatto (2 specimens).
Neritidae : Nerita plicata L. --Mejatto (1 spm.).
Nassariidae : Nassarius cf. papillosus L. --Mejatto.
Planaxidae : Planaxis sulcatus Born ? --Lijeron

Land species

- Realidae : Omphalotropis fragilis Pease --Imroj (1 dead); Jabor
(1 dead juvenile, probably this sp., Bernese
funnel from Pandanus).
- Assimineidae : Assiminea nitida Pease --Jabor (1 dead, Berlese
funnel from Pandanus); Imroj (2 dead).
- Truncatellidae : Truncatella guerini Villa --Jabor (16 live; 1 dead
juvenile in Berlese funnel may be this sp.);
Imroj (4 dead).
- Melaniidae : Melania sp. --Pinlep (5 dead; fresh or brackish water).
- Ellobiidae : Melampus luteus Quoy & Gaimard --Imroj (2 dead; littoral).
- Tornatellinidae : Tornatellinops variabilis Odhner --Kinajon (about
150 live and 3 dead)
- Pupillidae : Gastrocopta pediculus Shuttleworth --Jabor (1 dead,
Bernese funnel from Pandanus); Imroj (1 dead).
- Stenogyridae : Lamellaxis oparanum Pfeiffer --Jabor (1 dead).
- Zonitidae : Liardetia sp.? --Jabor (1 dead juvenile, obtained
from Berlese funnel, in Pandanus).

APPENDIX II

GASTROPOD MOLLUSCS COLLECTED BY J. L. GERRITT

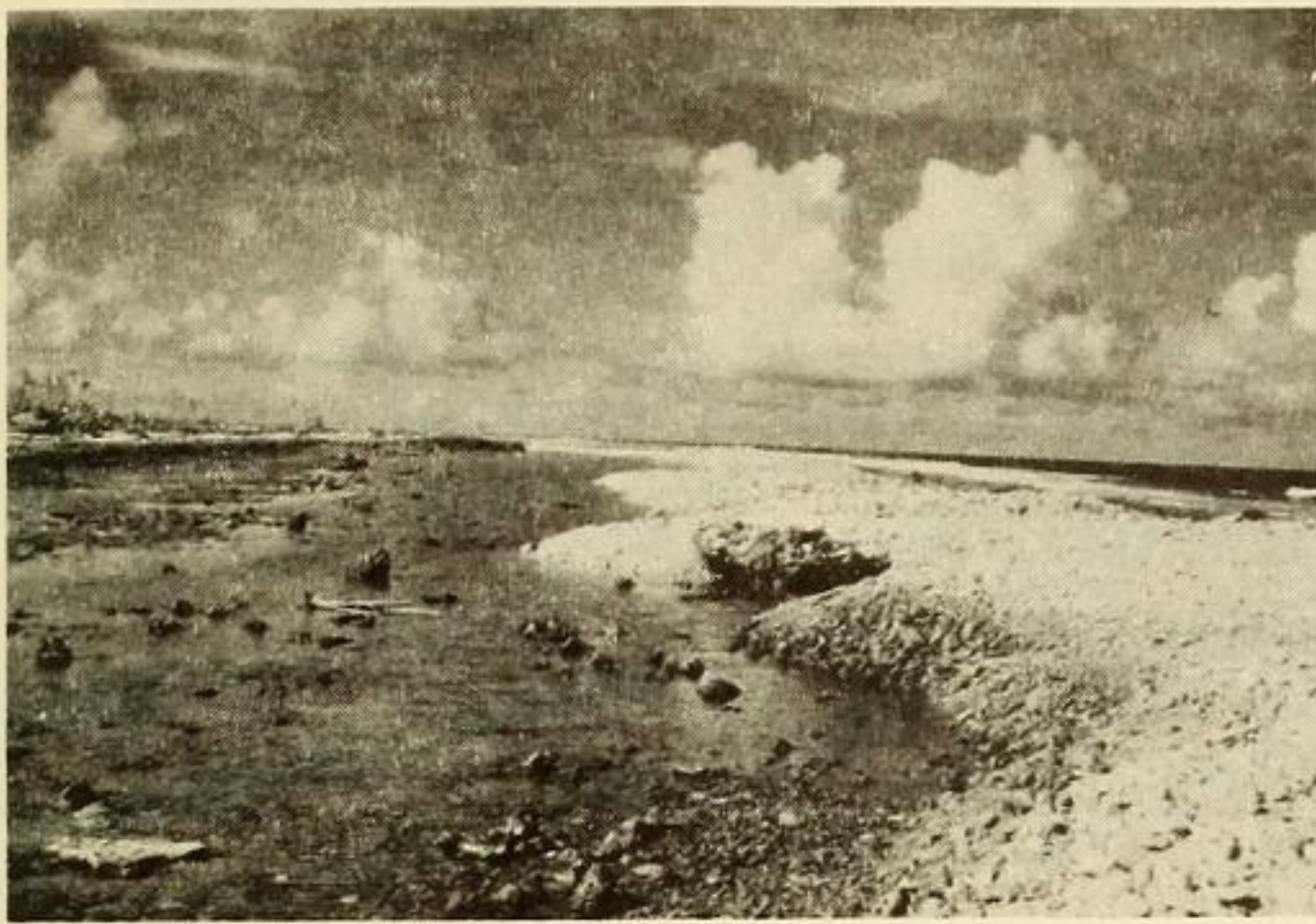
List prepared by Yoshio Kondo

Marine species

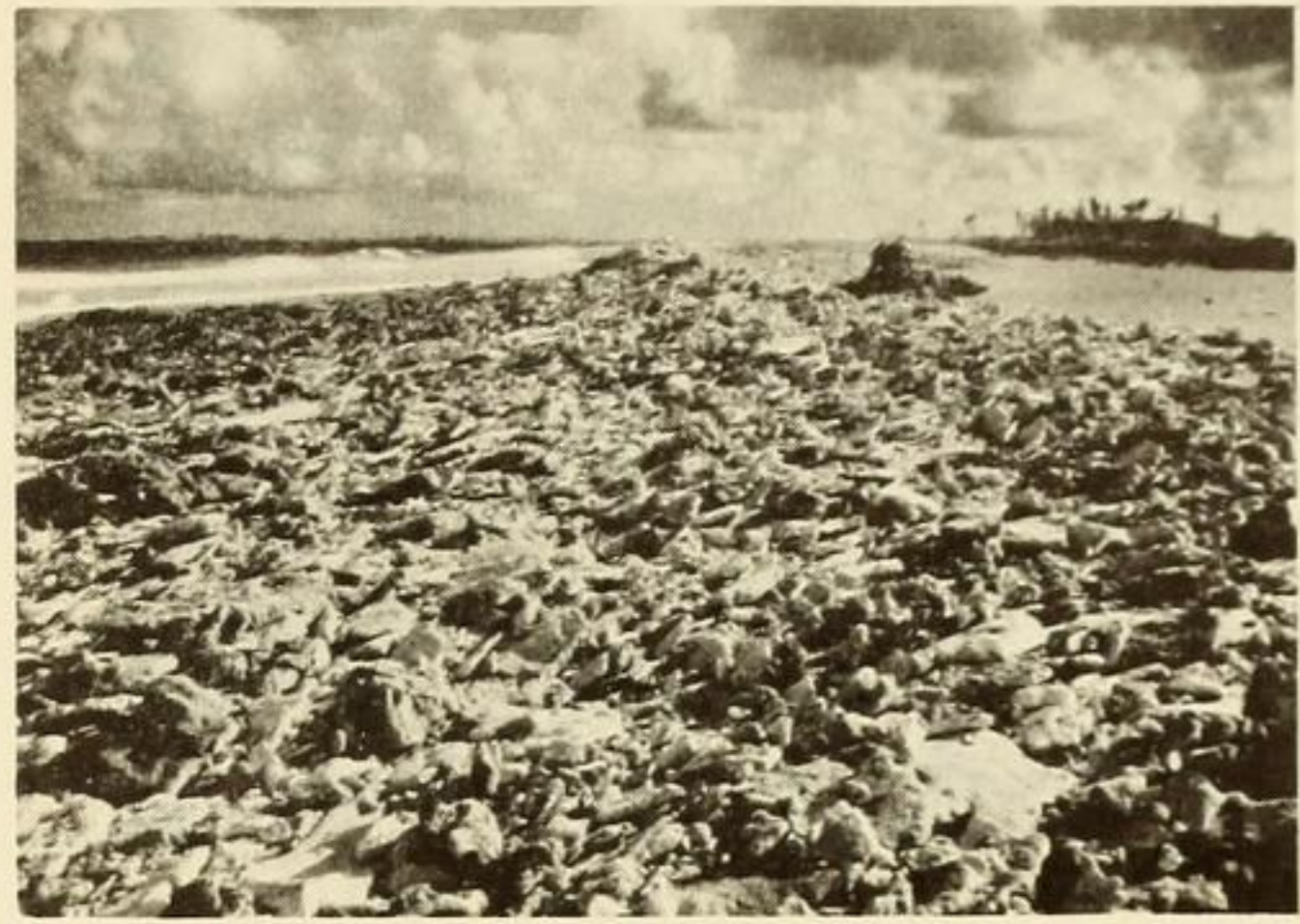
- Tridacna* : *Tridacna* sp. (2 specimens)
- Vermetidae* : *Vermetus* sp. (1 spec.)
- Massutidae* : *Massutia* sp. (1 spec.)
- Planorbidae* : *Planorbis* sp. (1 spec.)

Land species

- Helicidae* : *Helicella* sp. (1 dead; 1 spec.)
- Assinioidae* : *Assinioides* sp. (1 dead; 1 spec.)
- Truncatellidae* : *Truncatella* sp. (10 live; 1 dead; 1 spec.)
- Melaniidae* : *Melania* sp. (2 dead; fresh or brackish water)
- Ellobiidae* : *Ellobia* sp. (2 dead; 1 spec.)
- Tornatellidae* : *Tornatella* sp. (150 live and 3 dead)
- Pupillidae* : *Pupilla* sp. (1 dead; 1 spec.)
- Stenogyridae* : *Stenogyris* sp. (1 dead)
- Scotiidae* : *Scotia* sp. (1 dead; 1 spec.)



a. Ridge of boulder gravel thrown up on reef flat. Jabor I. (Fosberg photo).



b. Same ridge, close-up showing imbrication of slab-like boulders of coral, principally Acropora sp. (Fosberg photo).



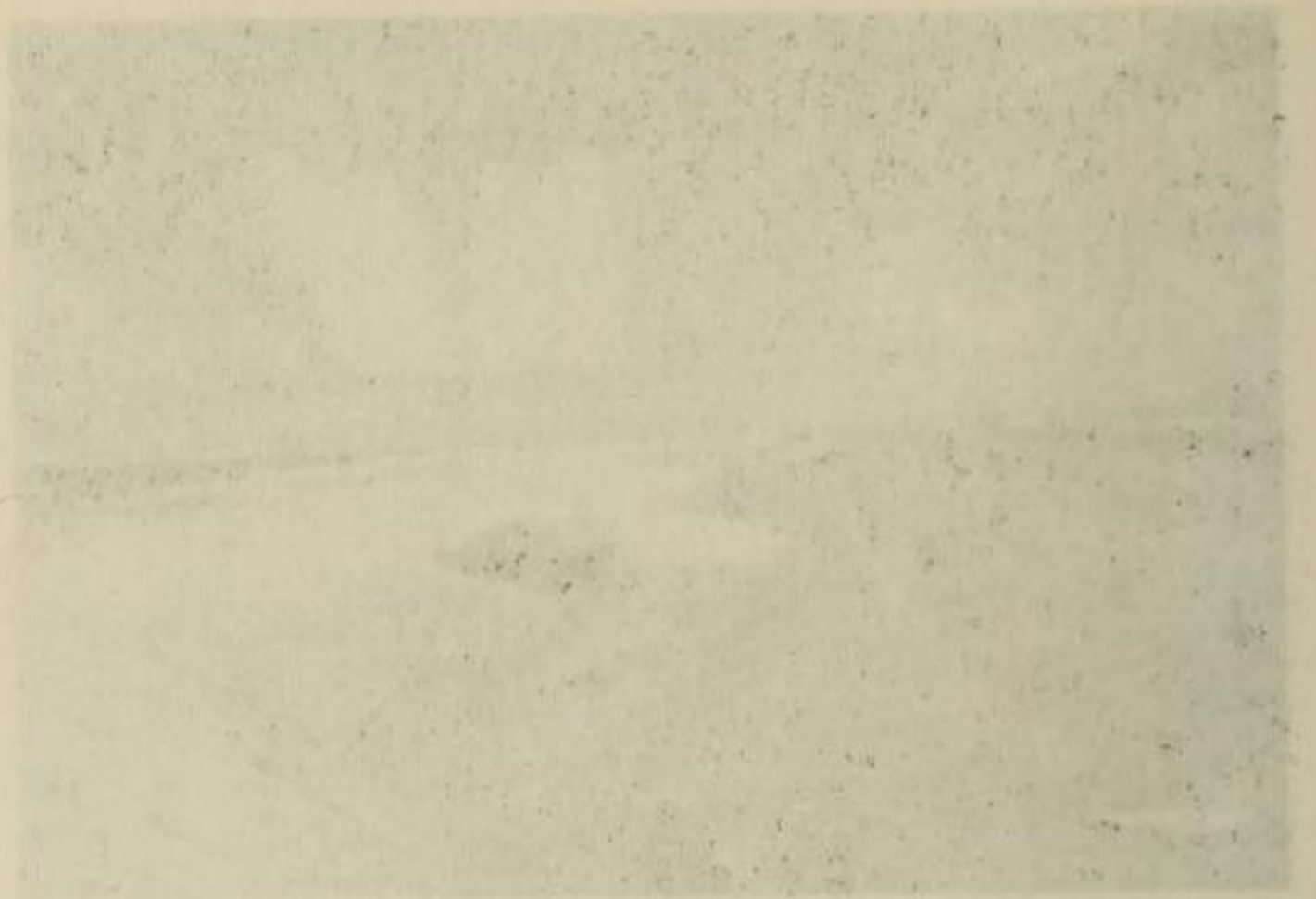
c. Aerial view of Sydneytown area showing large tank surrounded by rubble embankment covered by vegetation and two smaller tanks which have been moved by the storm waves from the two circular foundations visible just beyond the farther tank. Scour channel across reef to left of nearer small tank. (Gressitt photo).



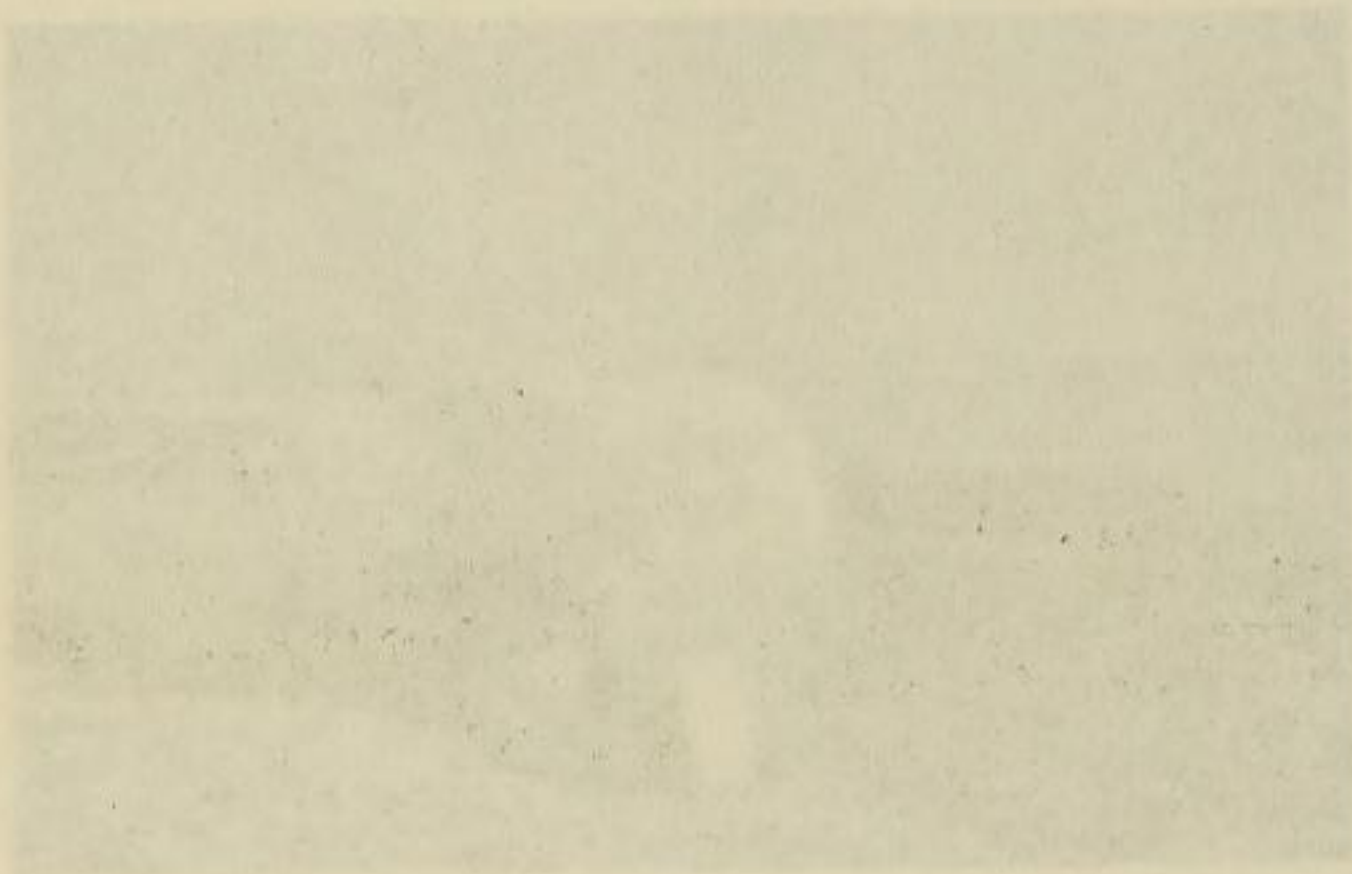
d. Large boulder resting on lagoon bar, Jaluit Islet, 3000 feet north of Blockhouse No. 4. The white upper half and stained lower half suggest that it has been overturned, that the white half was previously buried, the stained half exposed. The board leaning against it is 2 feet long. (Wiens photo).



b. Same ridge, close-up showing indication of slab-like boulders of coral, principally *Acropora* sp. (Fosberg photo).



a. Ridge of boulder gravel thrown up on reef flat, Jabor I. (Fosberg photo).



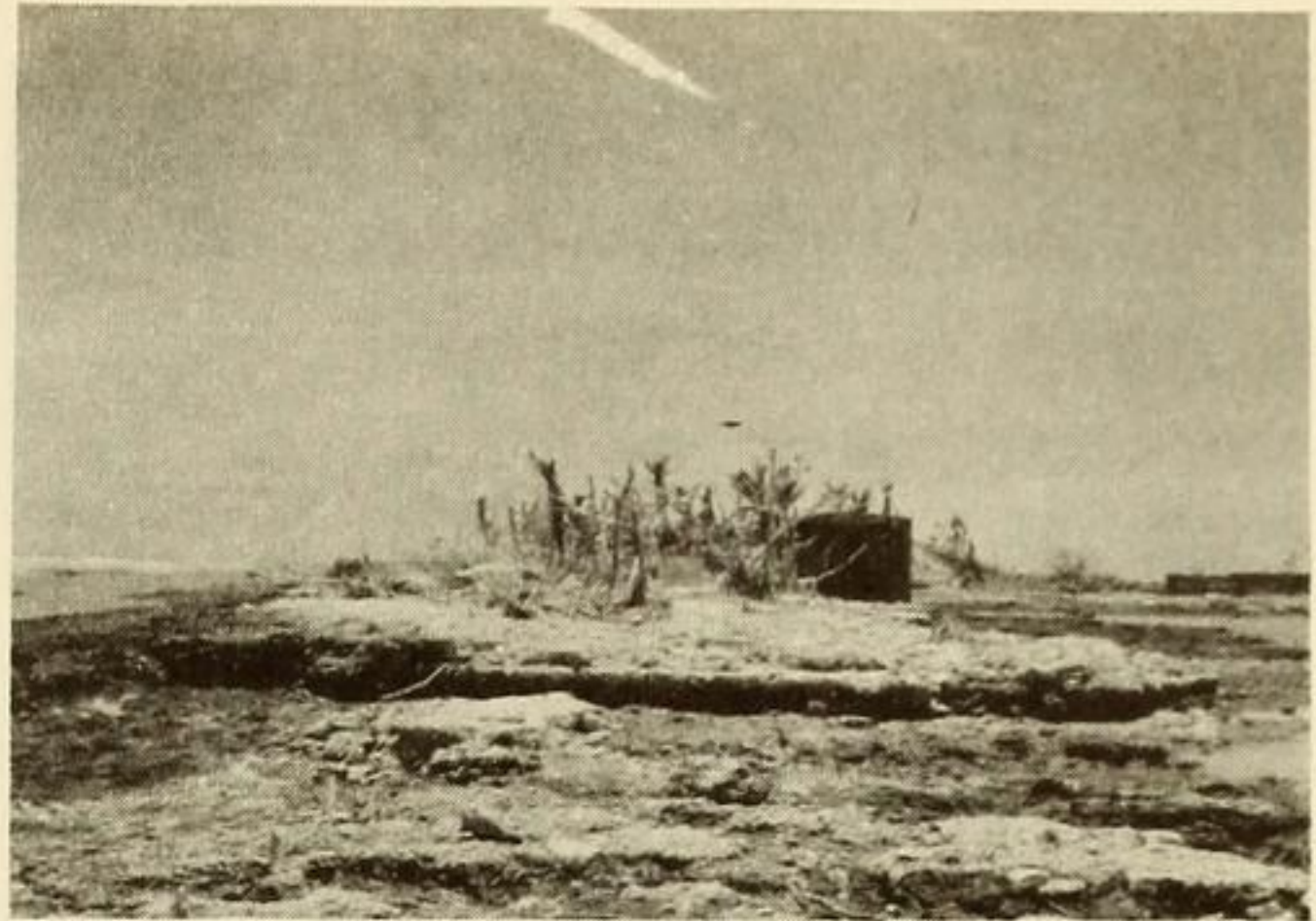
d. Large boulder resting on lagoon bar, Jabor I, 3000 feet north of Blockhouse No. 4. The white upper half and stained lower half suggest that it has been overturned. The white half was previously buried, the stained half exposed. The board facing against it is 1 foot long. (Wiese photo).



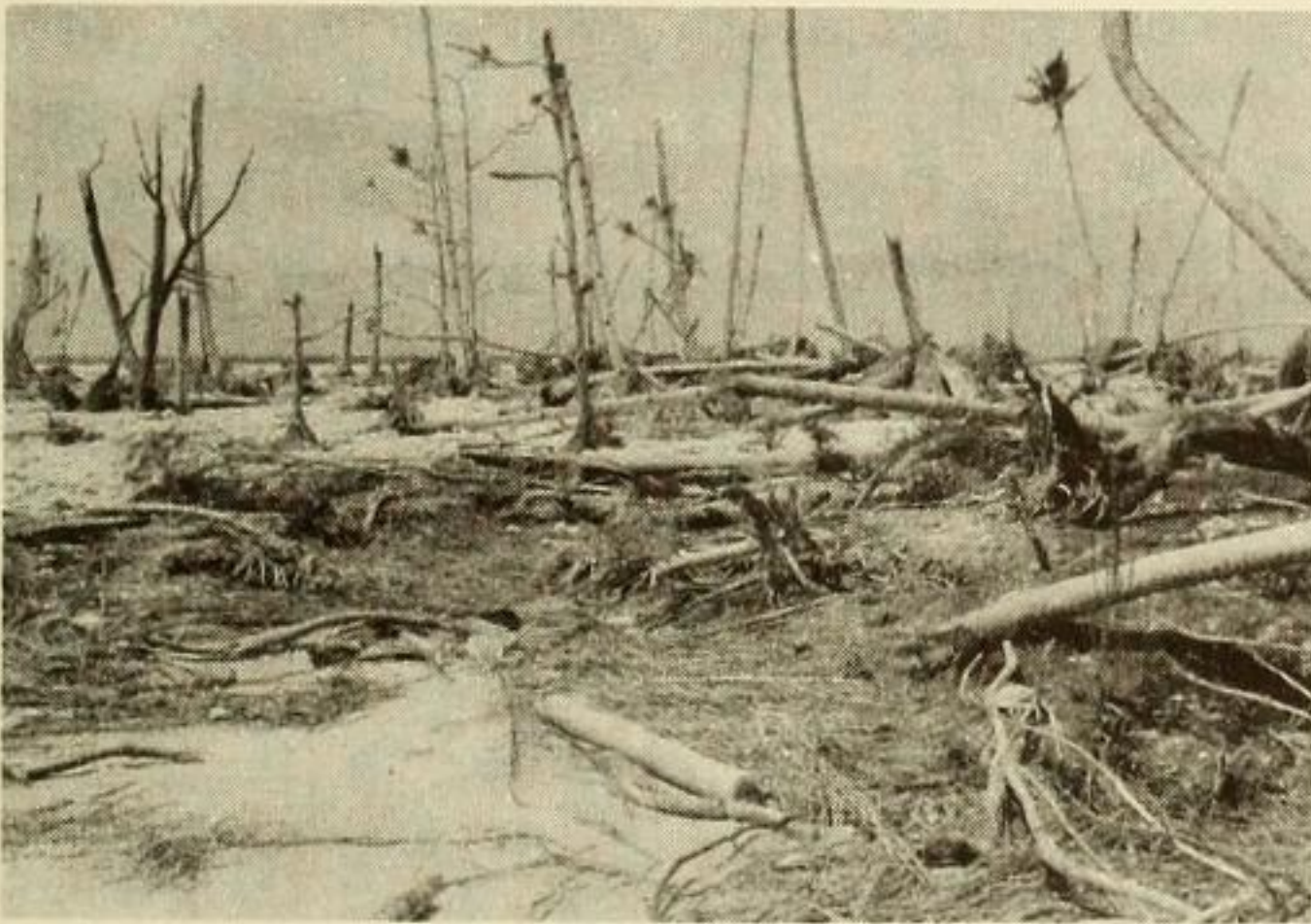
c. Aerial view of Sydaeytown area showing large tank surrounded by rubble embankment covered by vegetation and two smaller tanks which have been moved by the storm waves from the two circular foundations visible just beyond the further tank. Scour channel across reef to left of nearer small tank. (Gressitt photo).



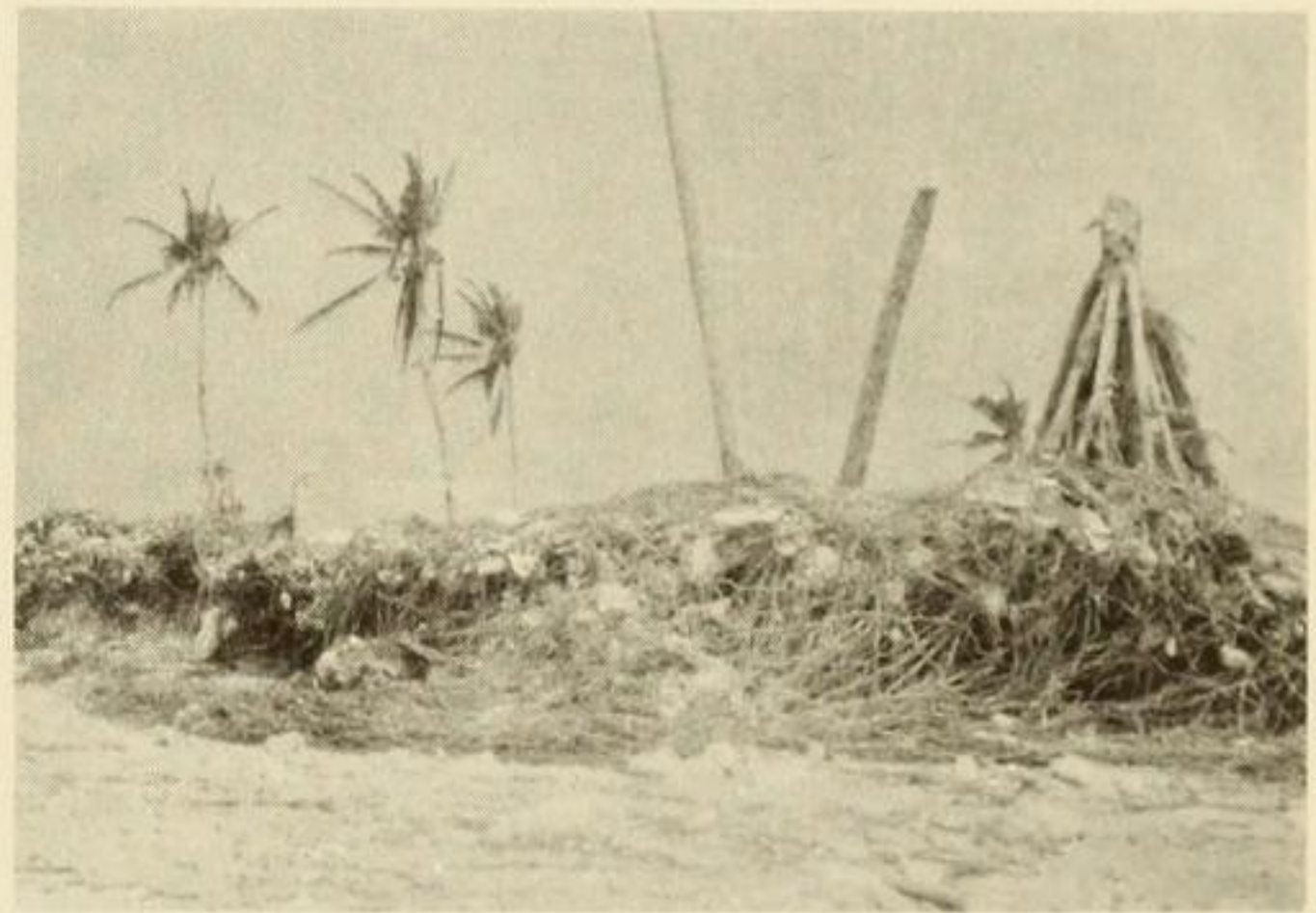
a. Eroded beach rock ridge with depression landward of it, boulder gravel ridge on reef in background, Jaluit Islet south of Jabor. (Wiens photo).



b. Scour channel cut through about 4 feet of conglomerate rock, displaced tank and typhoon-battered vegetation in background; near Sydneytown. (Wiens photo).



c. Scour pit, showing extensive exposure of root systems, battered Pandanus and coconut trees, gravel sheet in background, some original soil surface in right foreground; Mejatto, south of "Station 4". (Wiens photo).



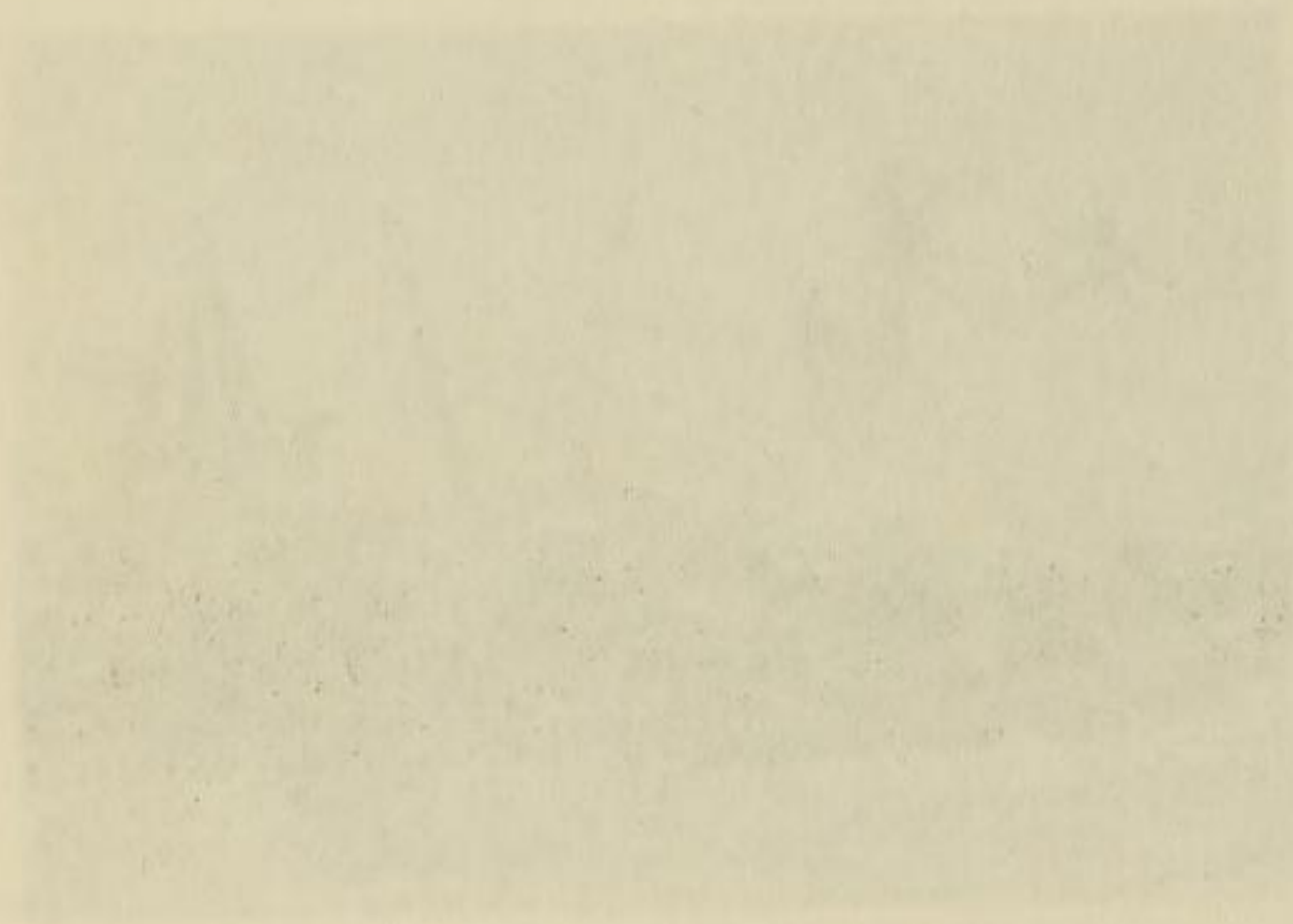
d. Root masses of coconut and Pandanus trees; the height of these (about 5 feet) suggests that a very substantial thickness of soil has been scoured away in the foreground; about 3000 feet from north end of Mejatto. (Wiens photo).



b. Scour channel cut through about 4 feet of conglomerate rock, displaced bank and typical battered vegetation in background; near Sydney town. (Wien's photo).



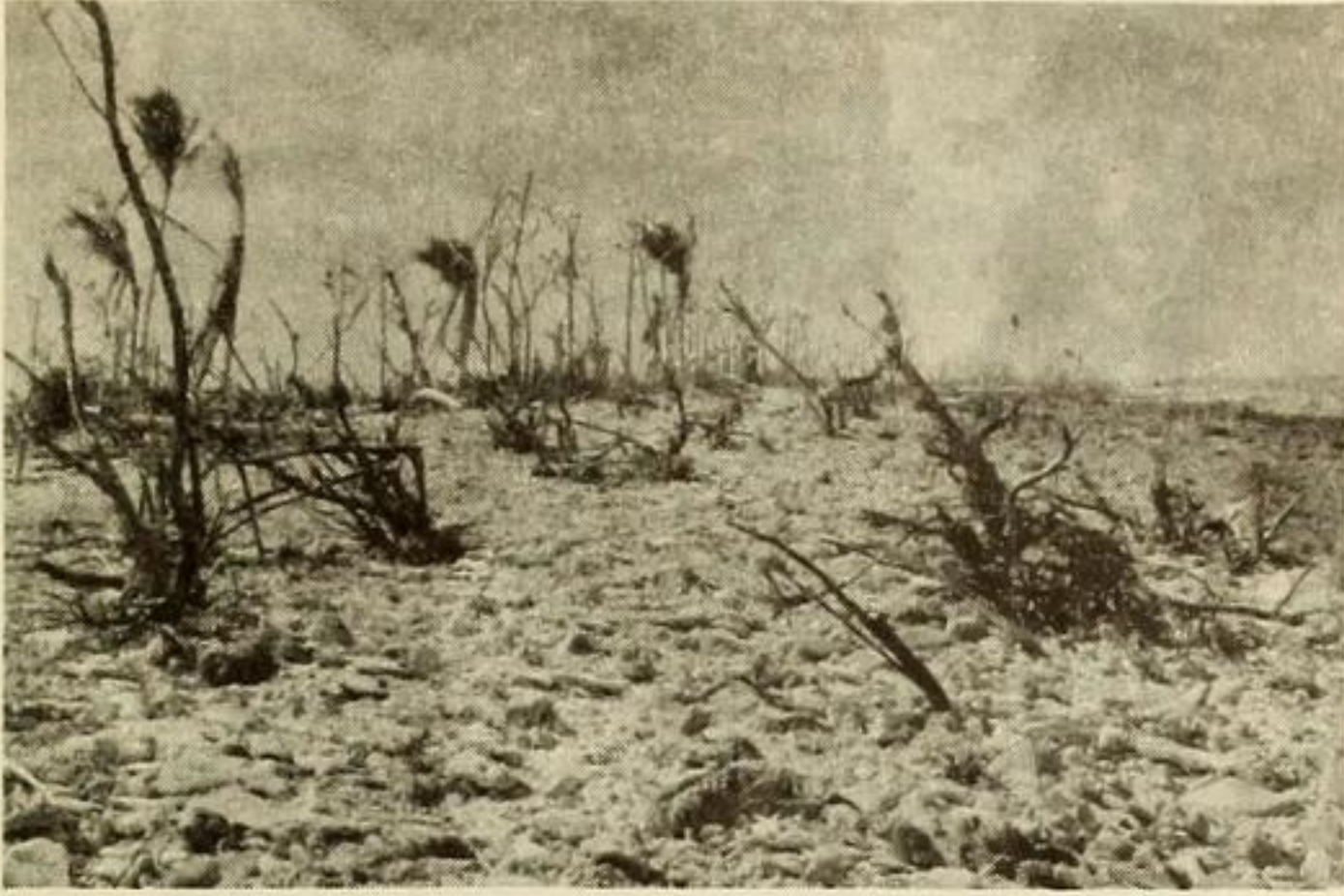
a. Eroded beach rock ridge with recession landward of it; boulder gravel ridge on reef in background; Tahiti later south of Labor. (Wien's photo).



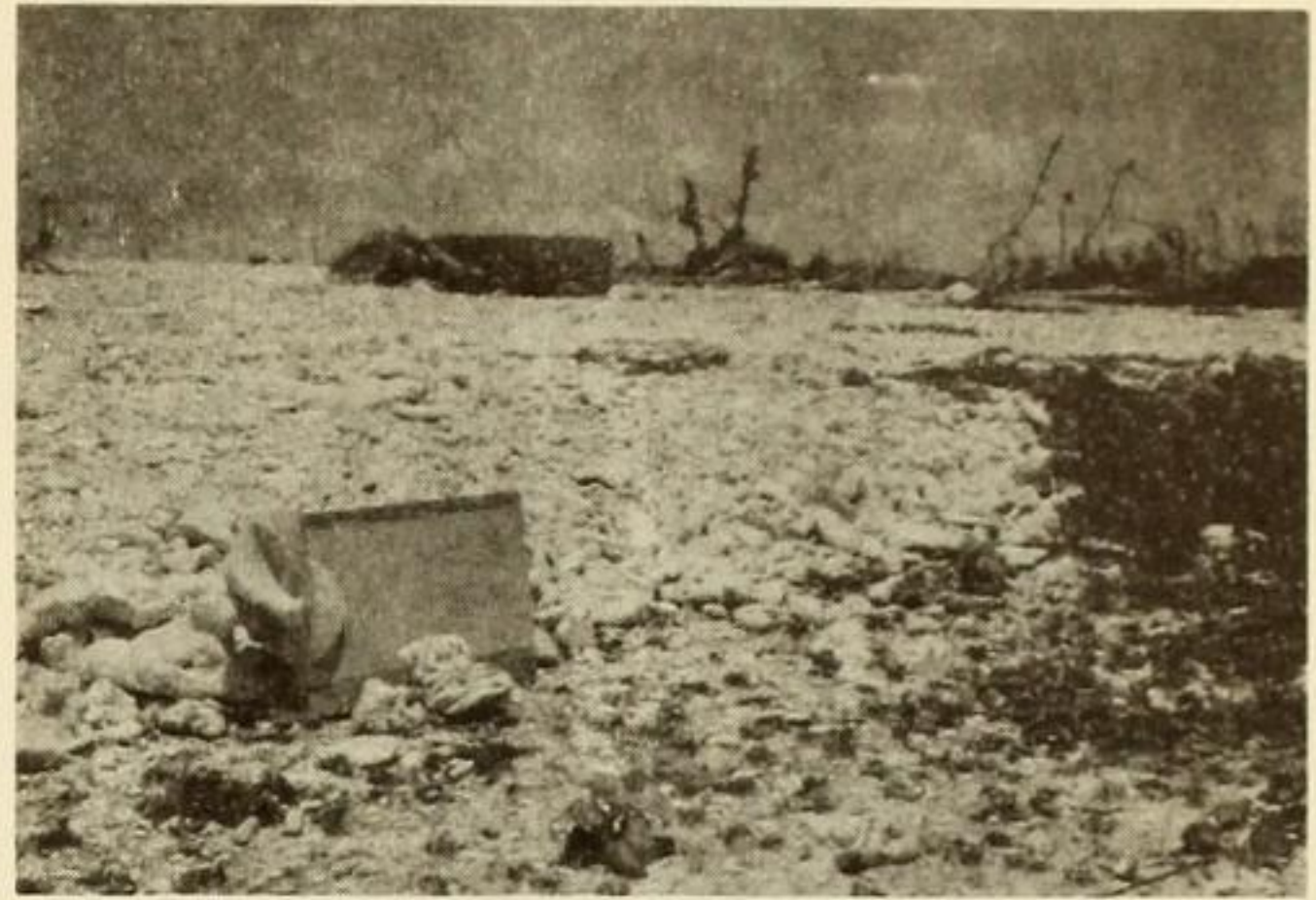
d. Root masses of coconut and Pandanus trees; the height of these (about 5 feet) suggests that a very substantial thickness of soil has been scoured away in the foreground; about 3000 feet from north end of Mejafo. (Wien's photo).



c. Scour pit showing extensive exposure of root systems, battered Pandanus and coconut trees, gravel sheet in background, some original soil surface in that foreground; Mejafo, south of Station 4. (Wien's photo).



a. Pemphis partly washed out and partly buried by gravel sheet; Jaluit I. about 1000 feet north of steel towers. (Wiens photo).



b. Lagoonward front of gravel sheet; just south of Jabor. (Wiens photo).



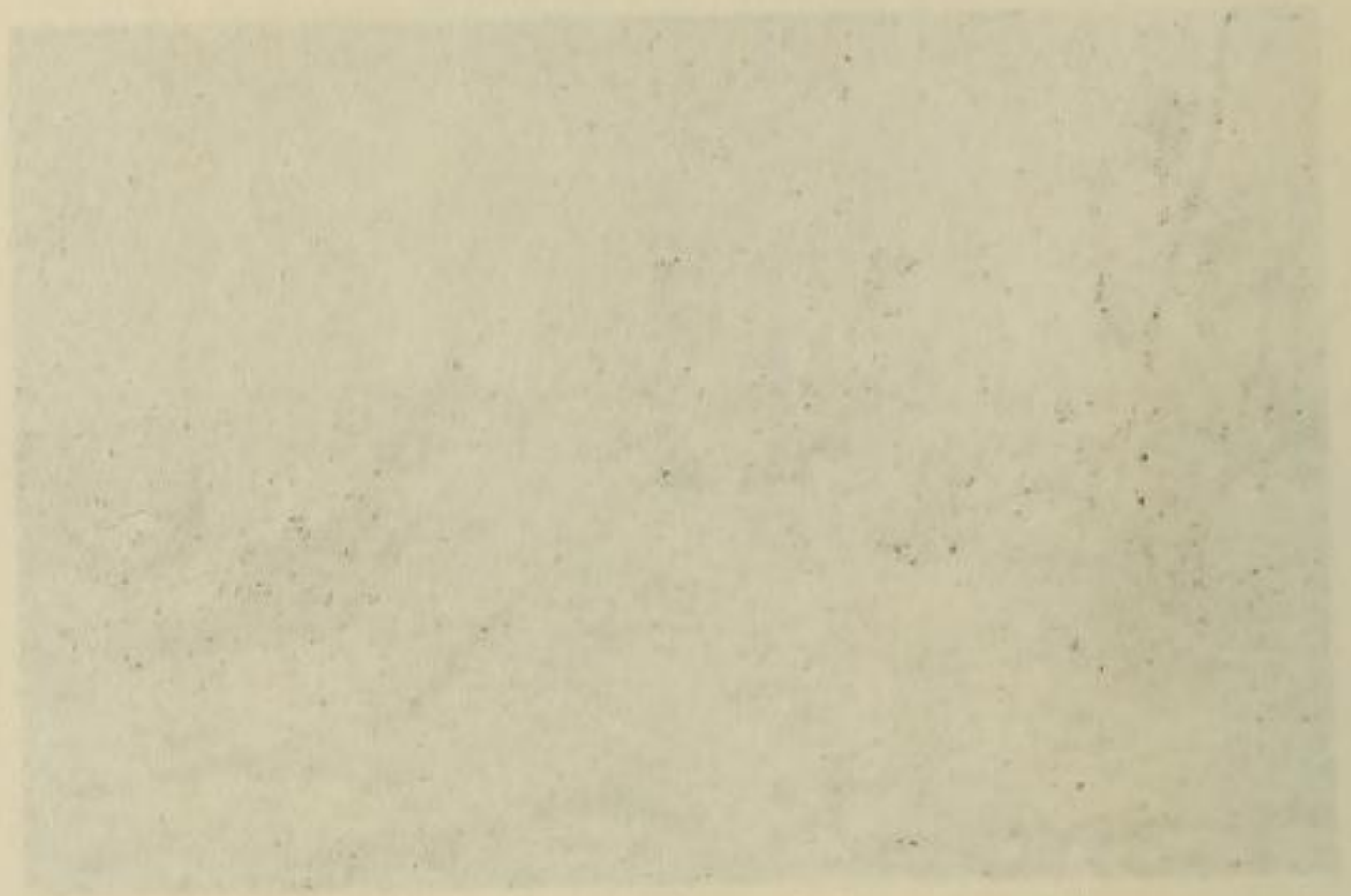
c. Lagoonward front of gravel sheet encroaching on small mangrove depression and partly filling it in; Mejatto I. (Wiens photo).



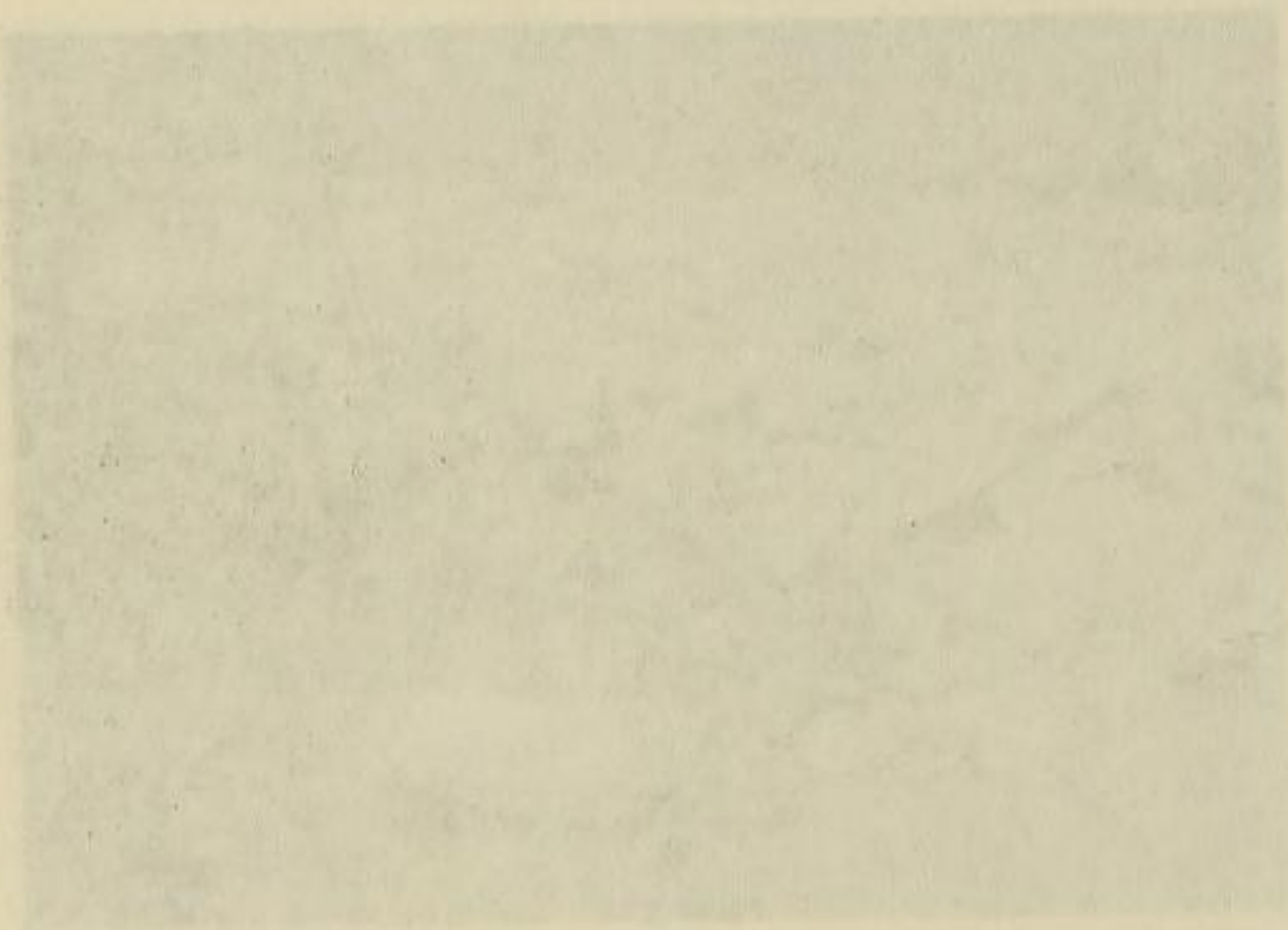
d. Another such depression, partly filled by gravel sheet; Mejatto I. (Wiens photo).



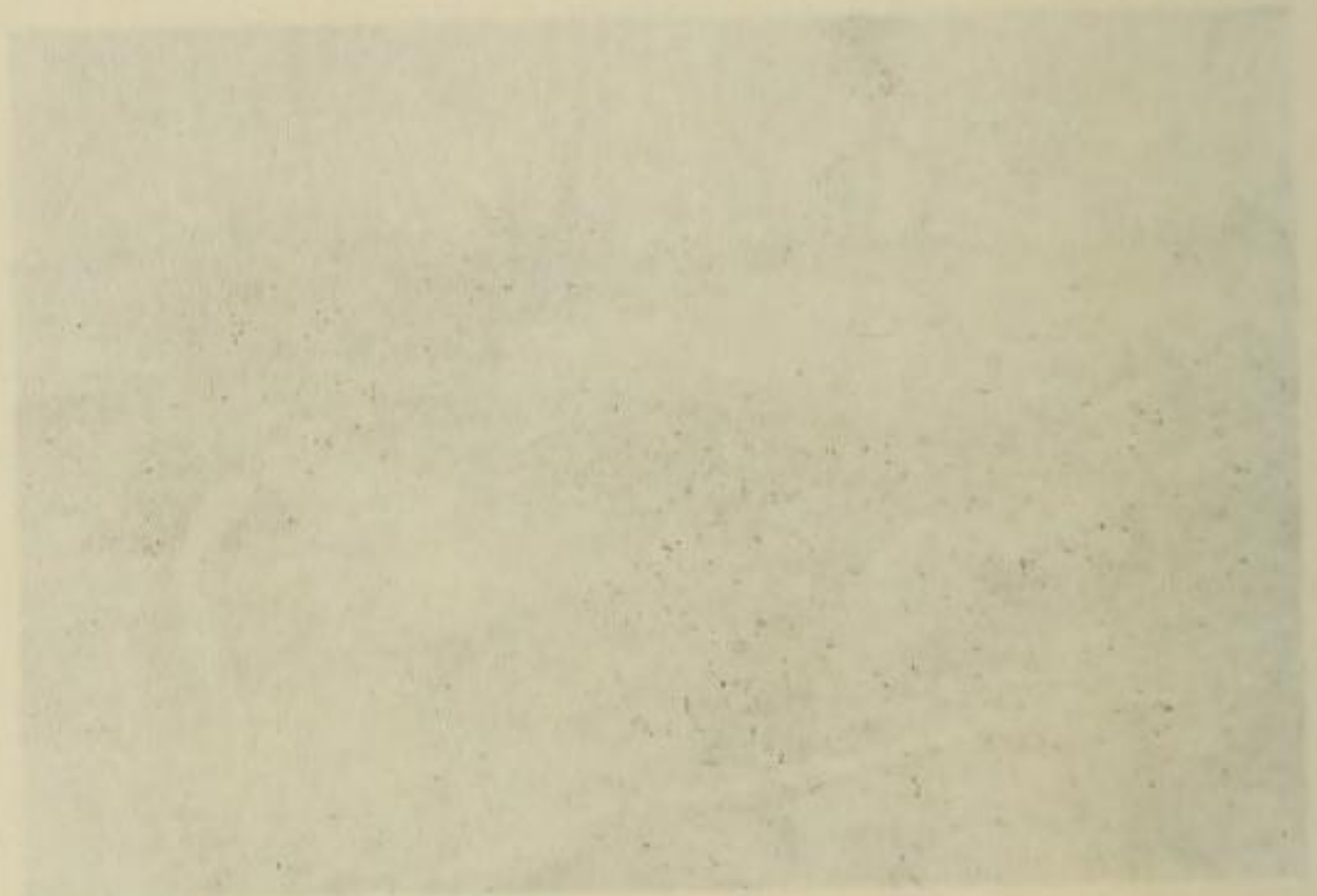
b. Lagoonward front of gravel sheet; just south of Jabor. (Wien photo.)



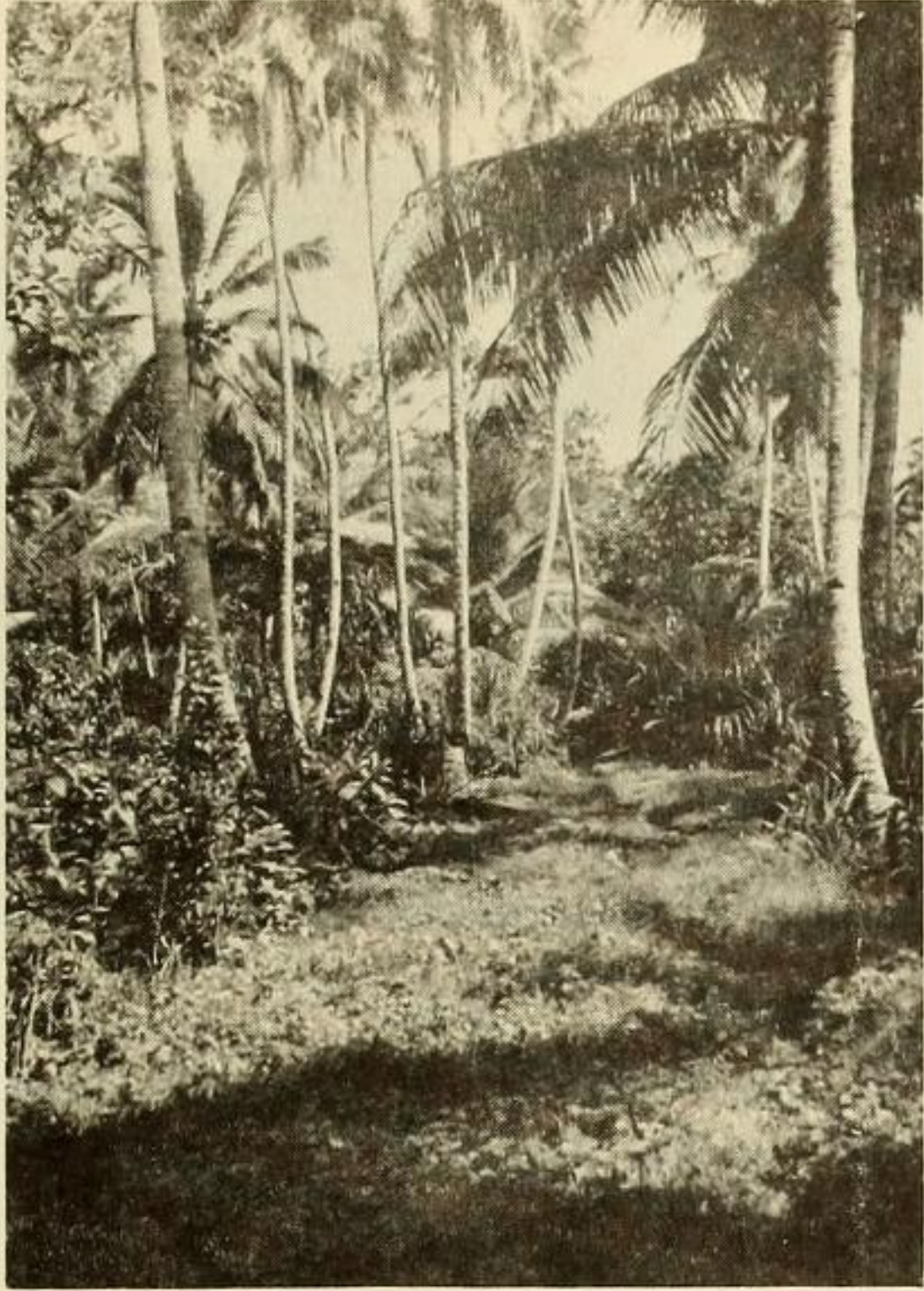
a. Penapis partly washed out and partly buried by gravel sheet; Jainti I. about 1000 feet north of steel towers. (Wien photo.)



d. Another such depression partly filled by gravel sheet; Metaito I. (Wien photo.)



c. Lagoonward front of gravel sheet encroaching on small mangrove depression and partly filling it; Metaito I. (Wien photo.)



a. Path in coconut-breadfruit plantation before typhoon OPHELIA; Mejatto I. (Fosberg photo, 1946).



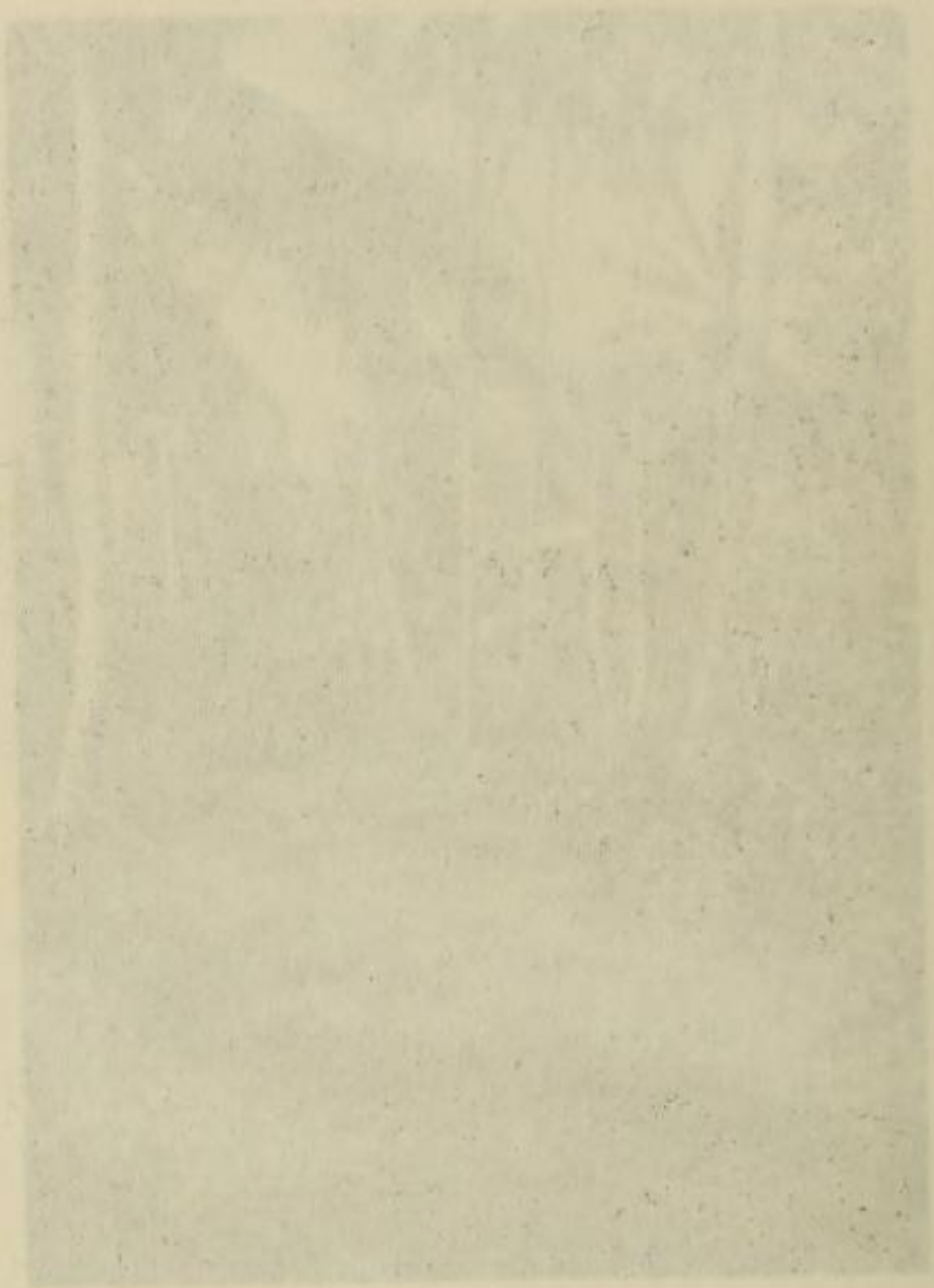
b. Opening in coconut-breadfruit plantation, breadfruit tree in center, before typhoon OPHELIA; Mejatto I. (Fosberg photo, 1946).



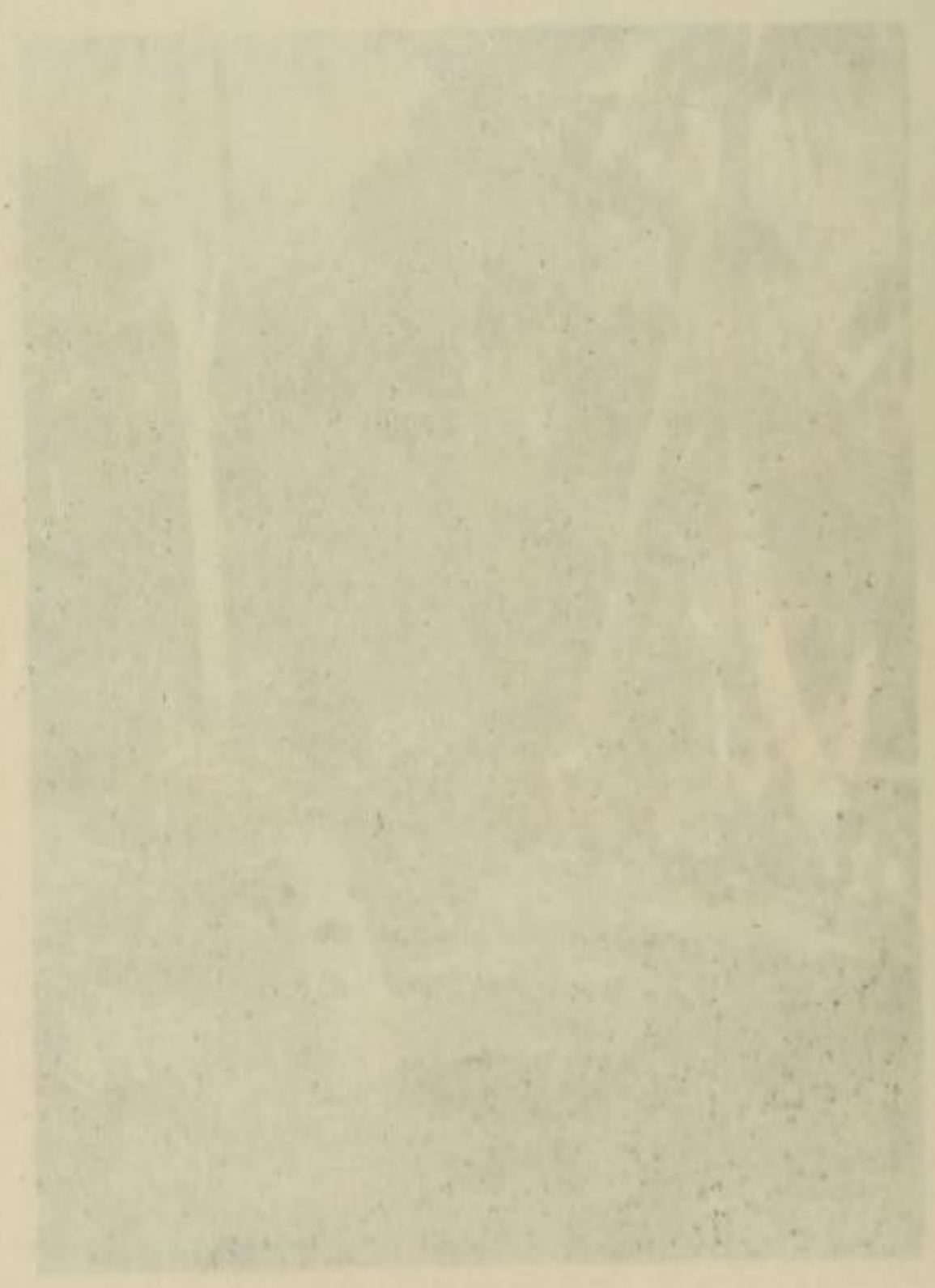
c. Opening in coconut plantation, Pandanus tree in center; Mejatto I. (Fosberg photo, 1946).



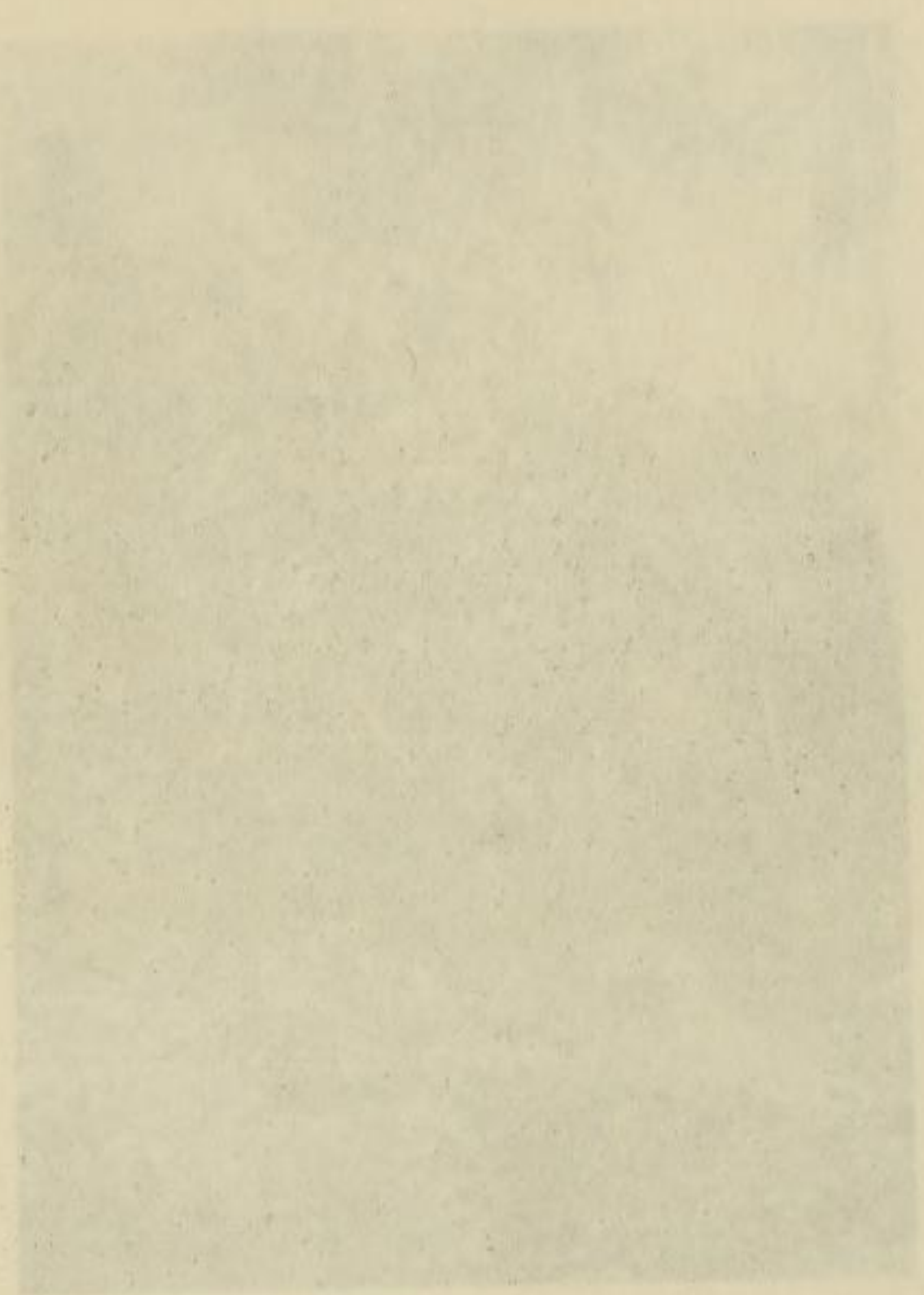
d. Mangrove depression, partly cleared by typhoon OPHELIA, showing Bruguiera trees bare of leaves above, accumulated vegetable debris in foreground; Mejatto I. (Fosberg photo).



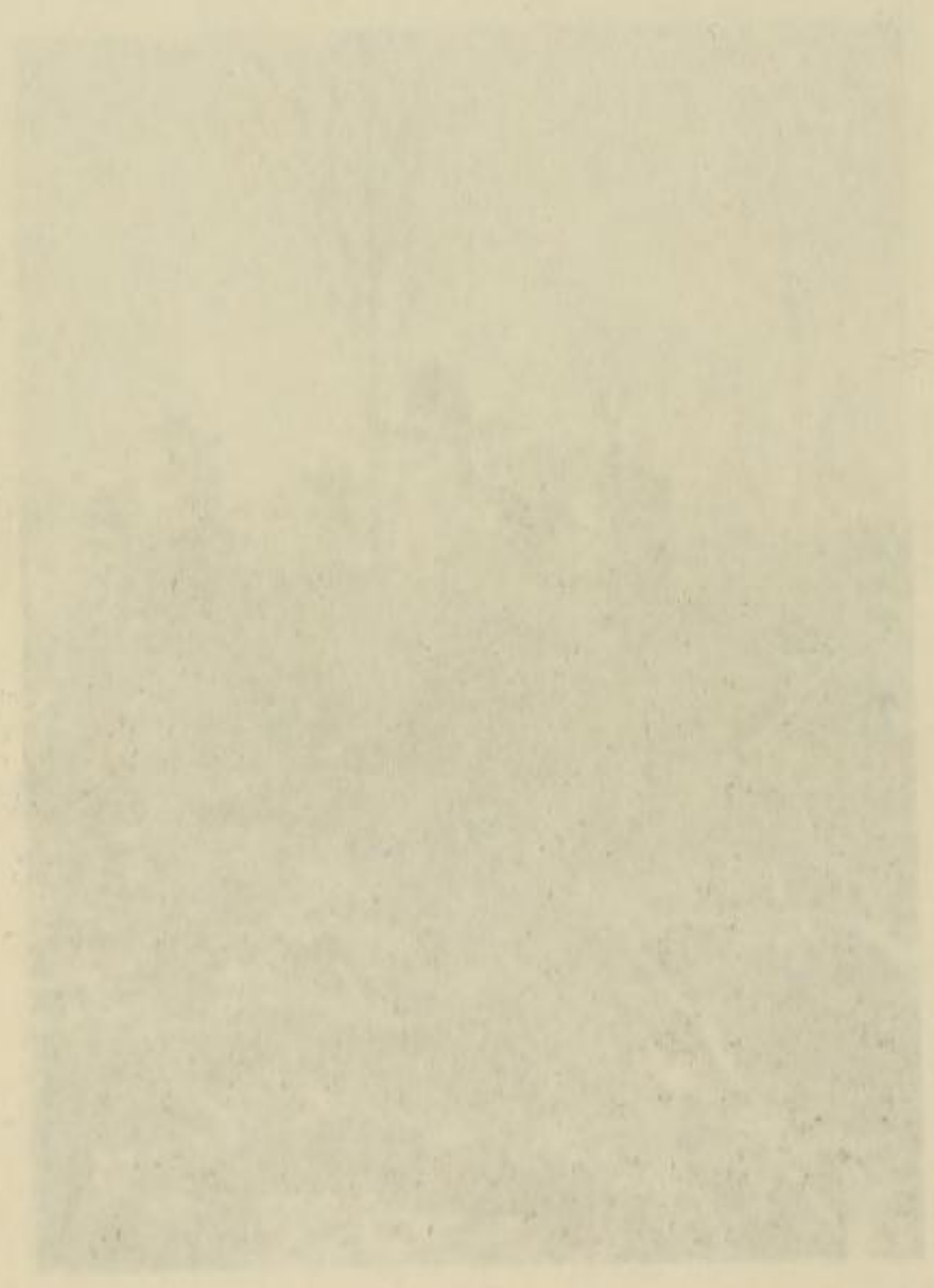
a. Path in coconut-plantation before typhoon OPHIELLA; Metateo I. (Fosberg photo, 1946).



c. Opening in coconut-plantation; Pandanus tree in center; Metateo I. (Fosberg photo, 1946).



b. Opening in coconut-plantation; Pandanus tree in center; before typhoon OPHIELLA; Metateo I. (Fosberg photo, 1946).



d. Mangrove depression, partly cleared by typhoon OPHIELLA, showing Pandanus trees bare of leaves above accumulated vegetable debris in foreground; Metateo I. (Fosberg photo).



a. Marshallese thatched house, surrounded by Pandanus trees, before typhoon OPHELIA; Mejjatto I. (Fosberg photo, 1946).



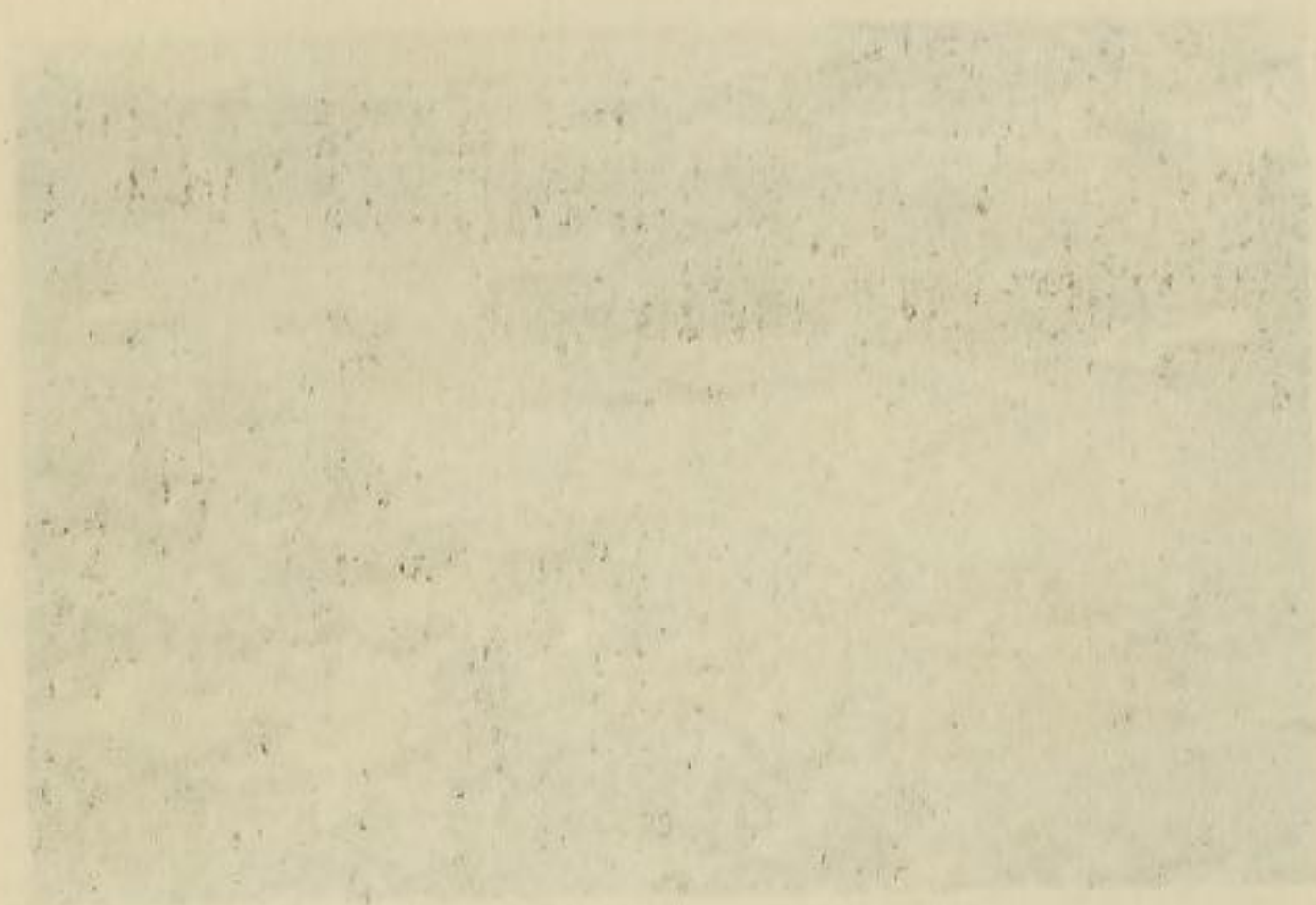
b. Area with vegetation and loose material completely scoured off; South of Jabor. (Fosberg photo).



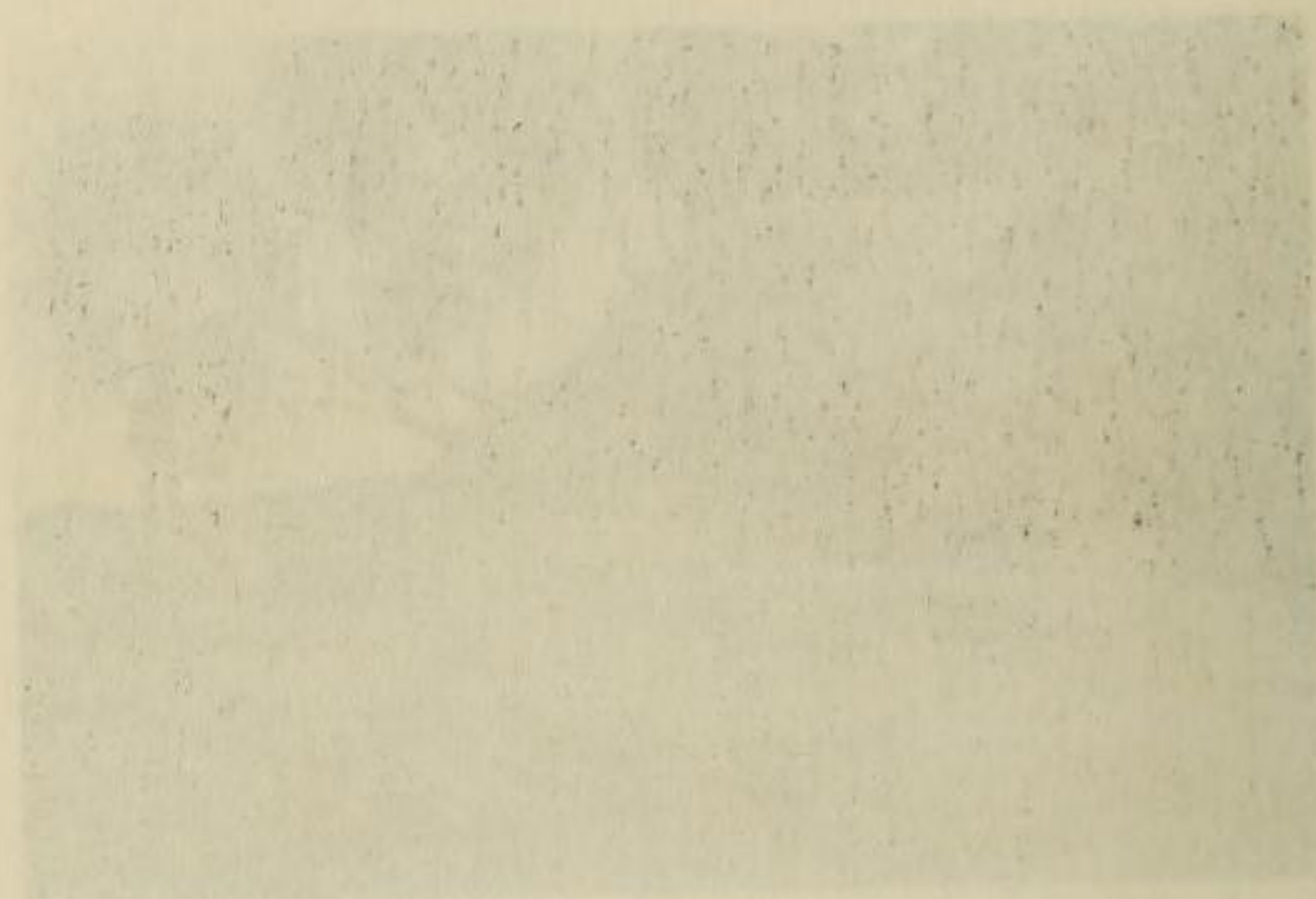
c. Trash thrown into mangrove depression; Bruguiera in background beaten down; Mejjatto I. (Fosberg photo).



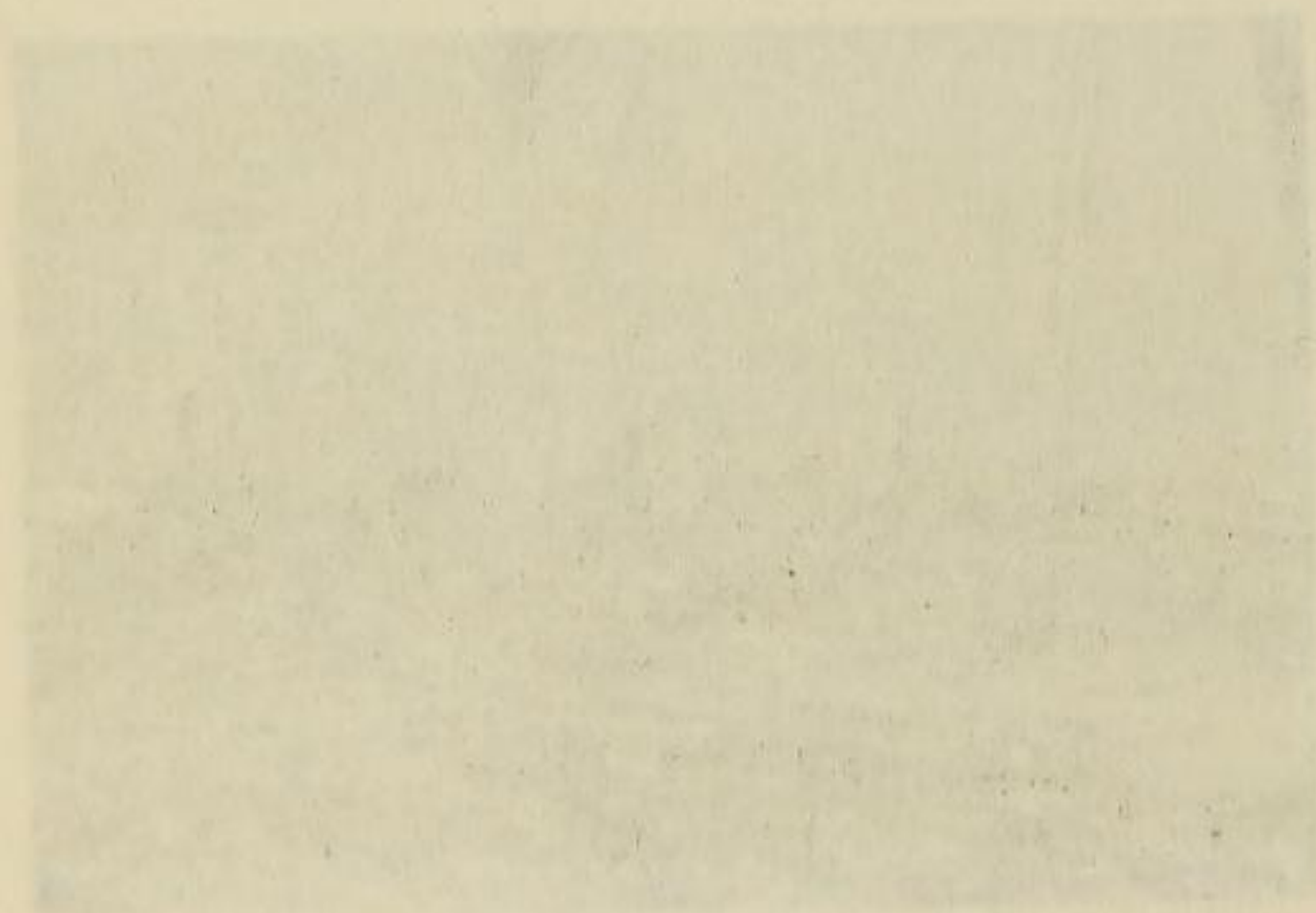
d. Coconut trees snapped off by typhoon OPHELIA; Mejjatto I. (Fosberg photo).



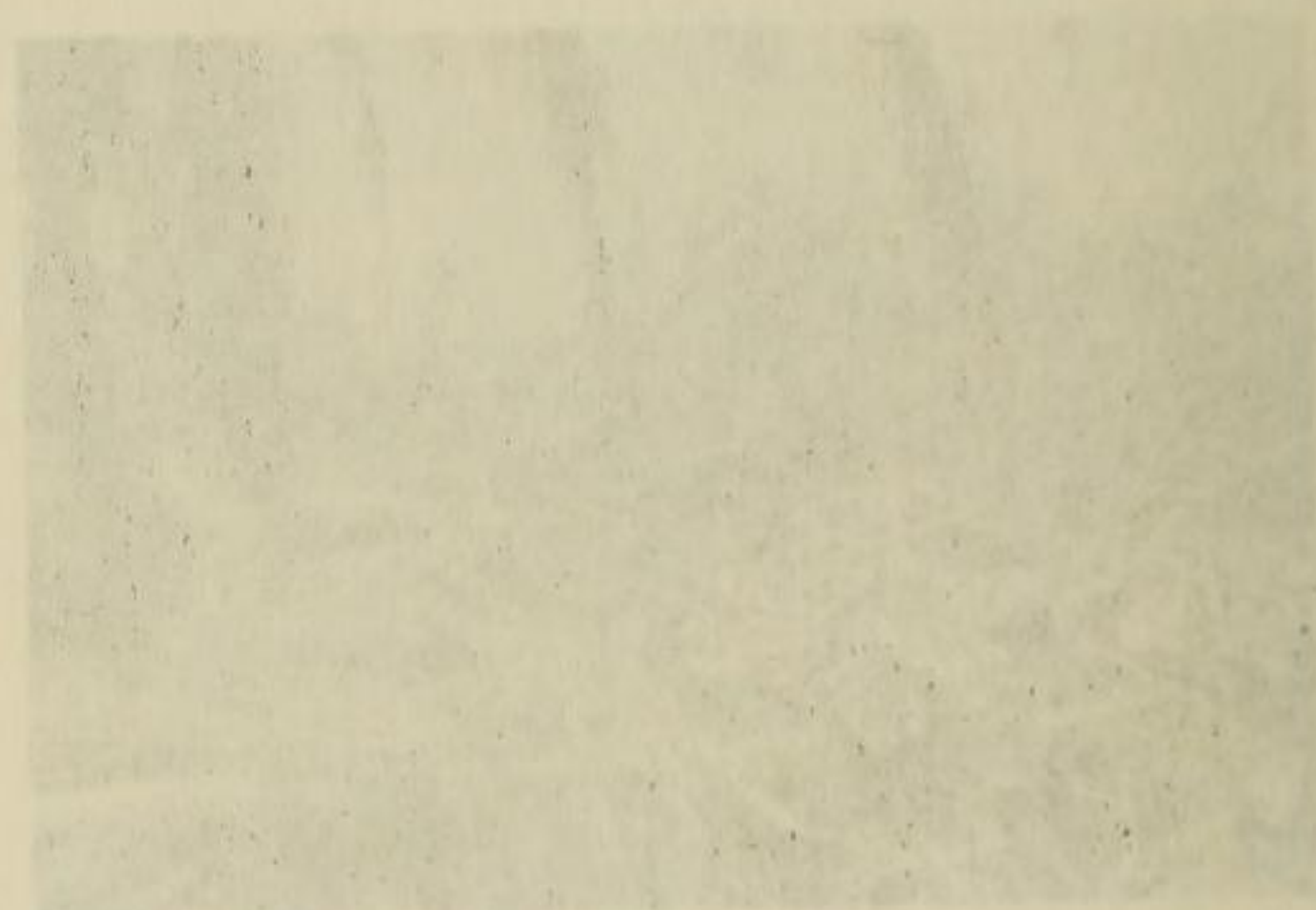
b. Area with vegetation and loose material completely scorched off; south of labor. (Fosberg photo).



a. Marshallese thatched house surrounded by Pandanus trees, before typhoon OPHELIA, Mejitto I. (Fosberg photo, 1946).



d. Coconut trees snapped off by typhoon OPHELIA, Mejitto I. (Fosberg photo).



c. Trash thrown into mangrove depression; Bremneria in background beaten down; Mejitto I. (Fosberg photo).



a. Uprooted breadfruit and coconut trees, broken Pandanus, battered coconut plantation. (Gressitt photo).



b. Partially uprooted young coconut tree and snapped coconut trunk in destroyed coconut plantation. (Gressitt photo).



c. Battered but still standing Barringtonia (?), Pandanus, and coconut trees, snapped off coconut trunks. (Gressitt photo).



d. Vegetable debris on wave-swept ground, north of Sydneytown; old tank in background. (Gressitt photo).



b. Partially uprooted young coconut tree and snapped coconut trunk in destroyed coconut plantation. (Gressitt photo).



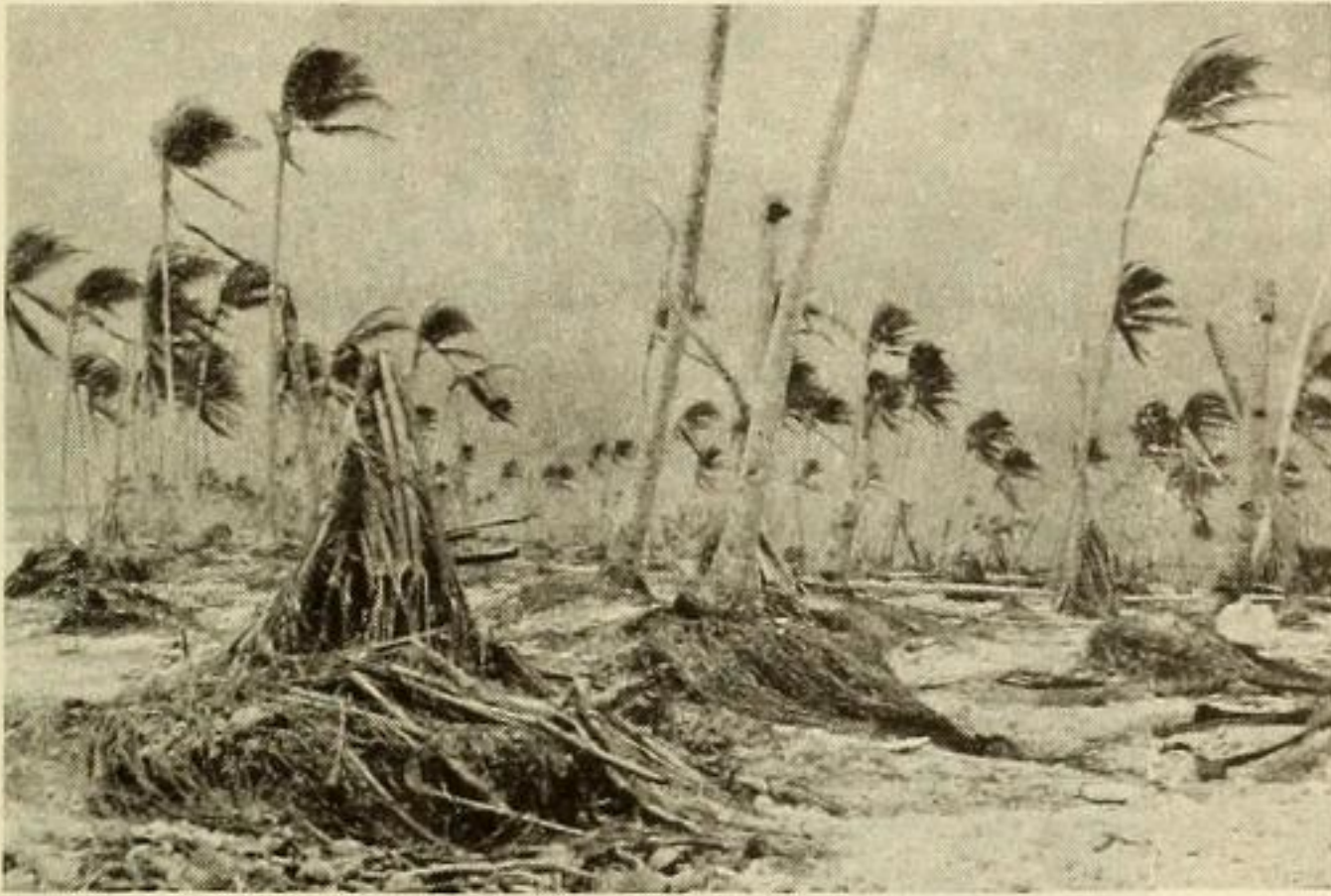
a. Uprooted breadfruit and coconut trees, broken Pandanus, battered coconut plantation. (Gressitt photo).



d. Vegetable debris on wave-swept ground, north of Sydneytown; old tank in background. (Gressitt photo).



c. Battered but still standing Bartholonia (?) Pandanus, and coconut trees, snapped off coconut trunks. (Gressitt photo).



a. Coconut and Pandanus root systems exposed by removal of soil, base of snapped-off Pandanus and snapped off coconut trunks in battered coconut plantation. (Gressitt photo).



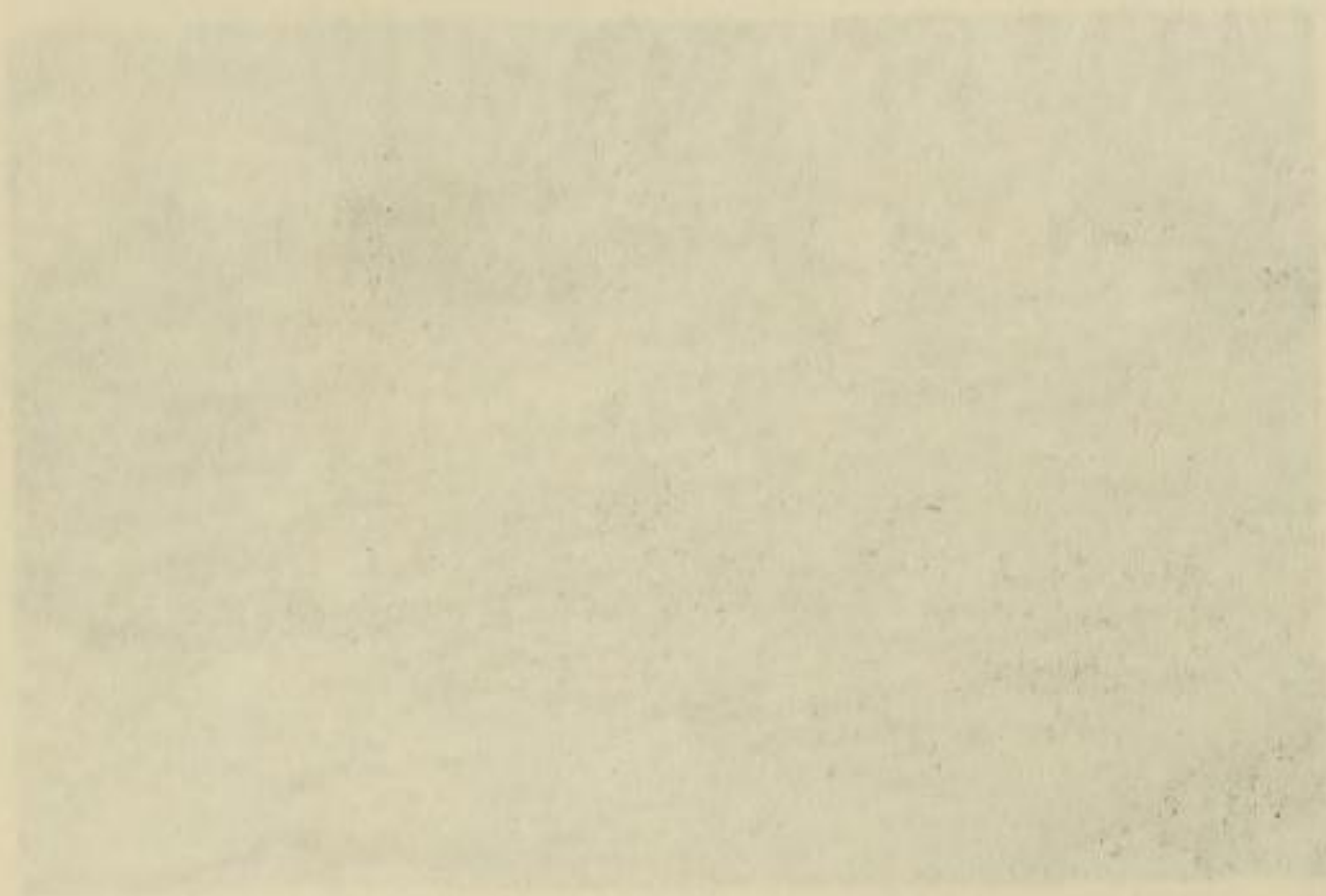
b. Partially buried vegetation, broken Pandanus and other trees, battered coconut plantation. (Gressitt photo).



c. Coconut trunks fallen in several directions; Imroj I. (Fosberg photo).



d. Area hit by wind only, showing broken Pandanus and coconut trees, but relatively undisturbed ground vegetation; Pinlep I. (Fosberg photo).



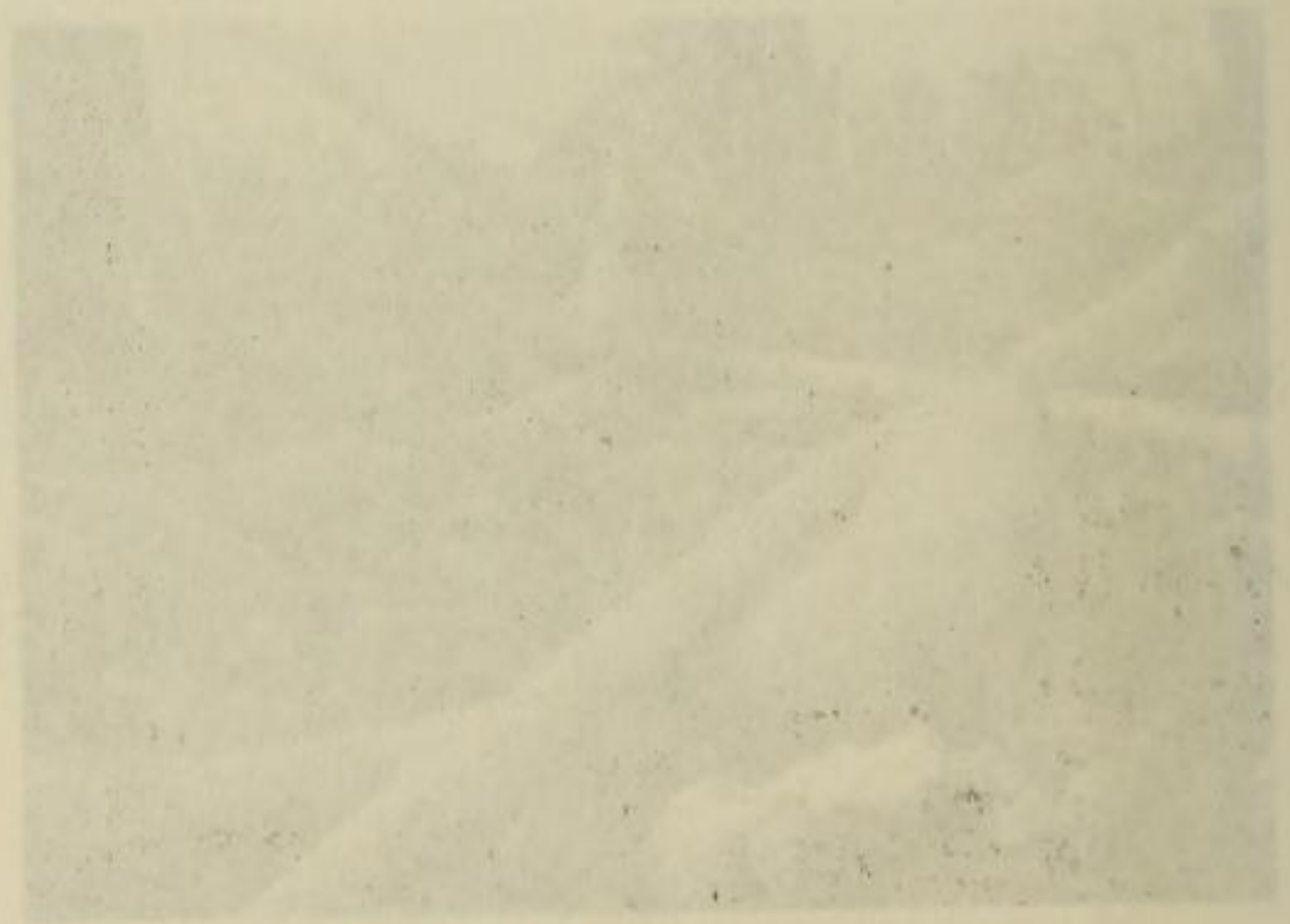
b. Partially buried vegetation, broken Pandanus and other trees, battered coconut plantation. (Gressitt photo).



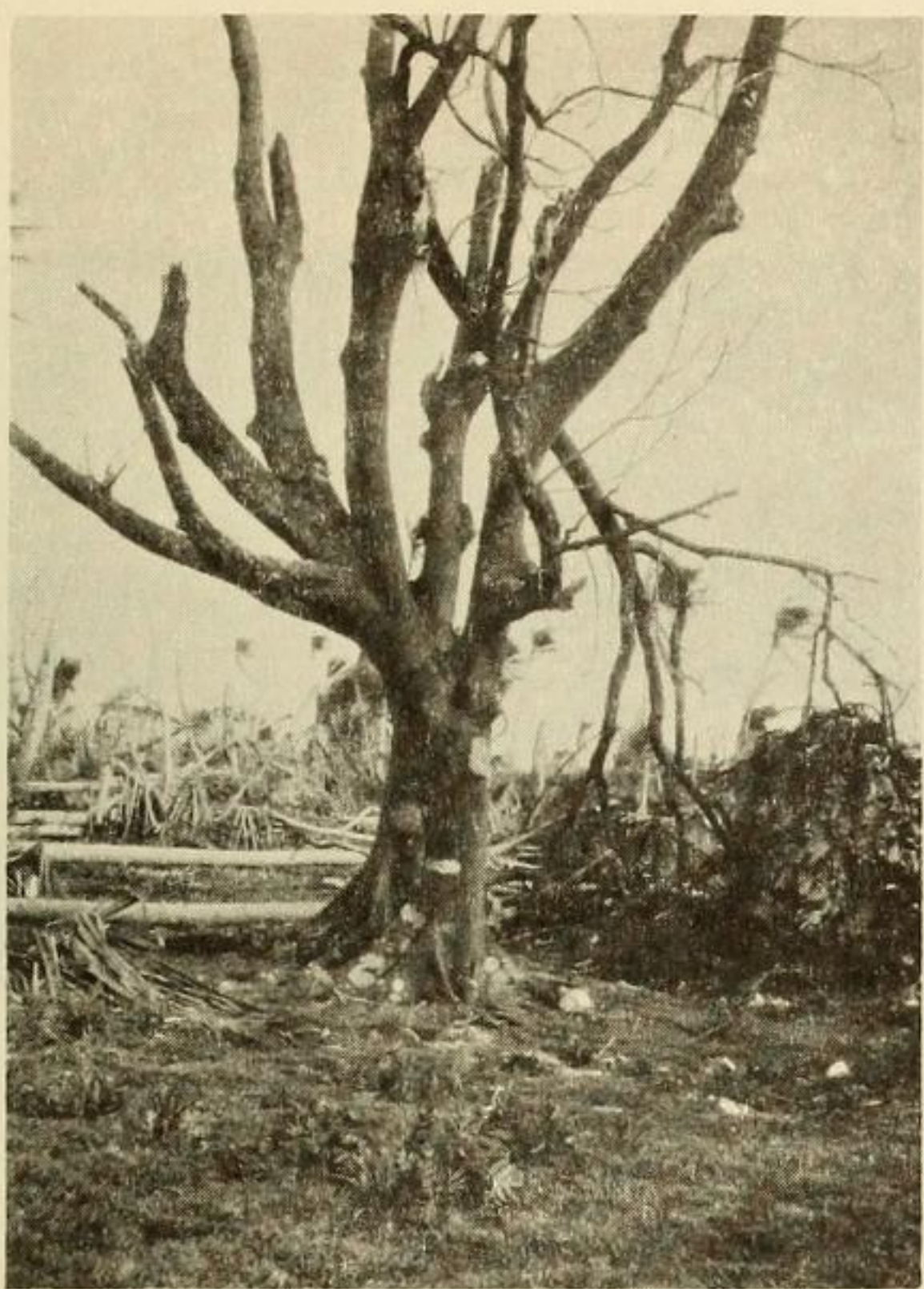
a. Coconut and Pandanus root systems exposed by removal of soil, base of snapped-off Pandanus and snapped-off coconut trunks in battered coconut plantation. (Gressitt photo).



d. Area hit by wind only, showing broken Pandanus and coconut trees, but relatively undisturbed ground vegetation. (Fosberg photo).

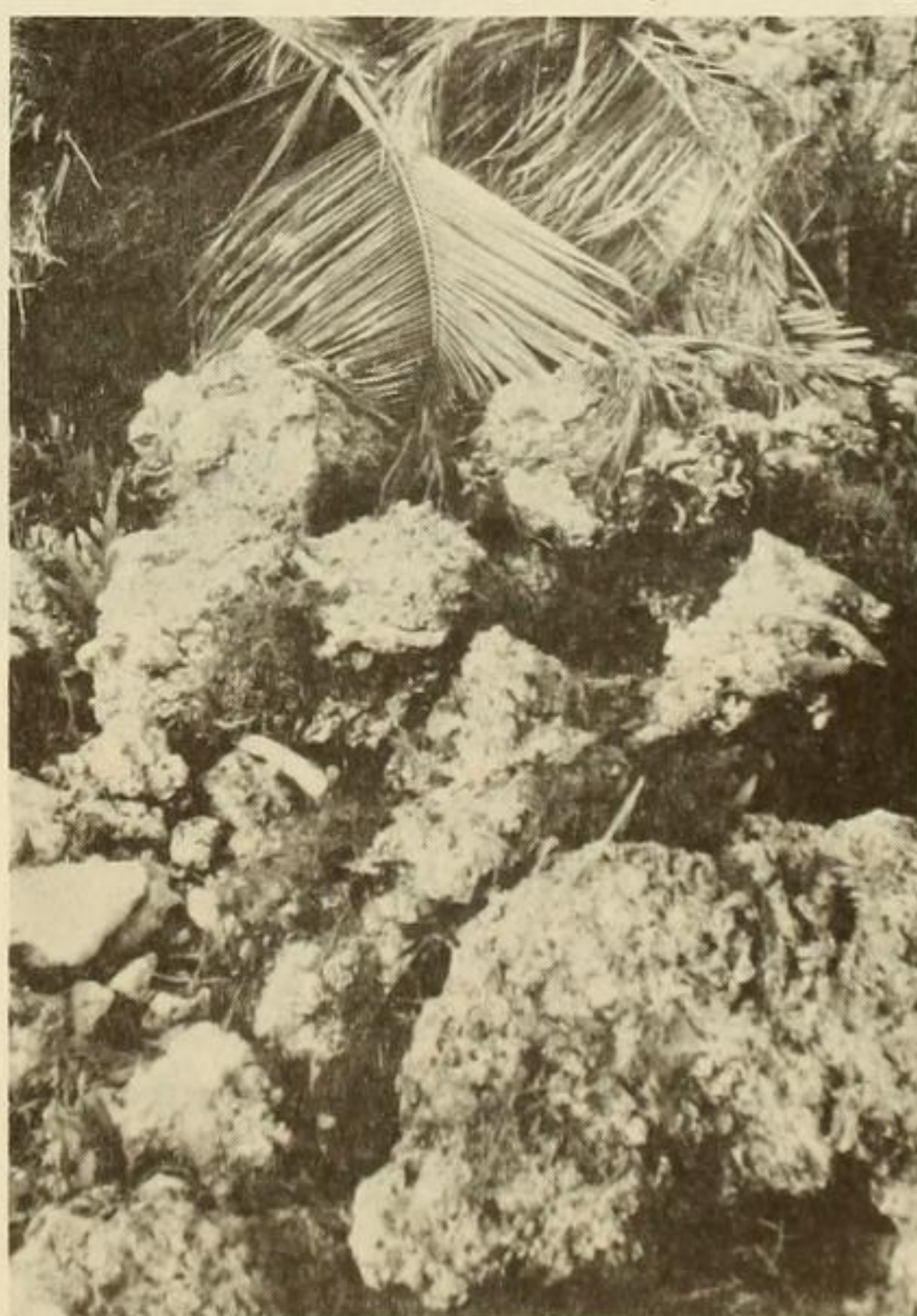
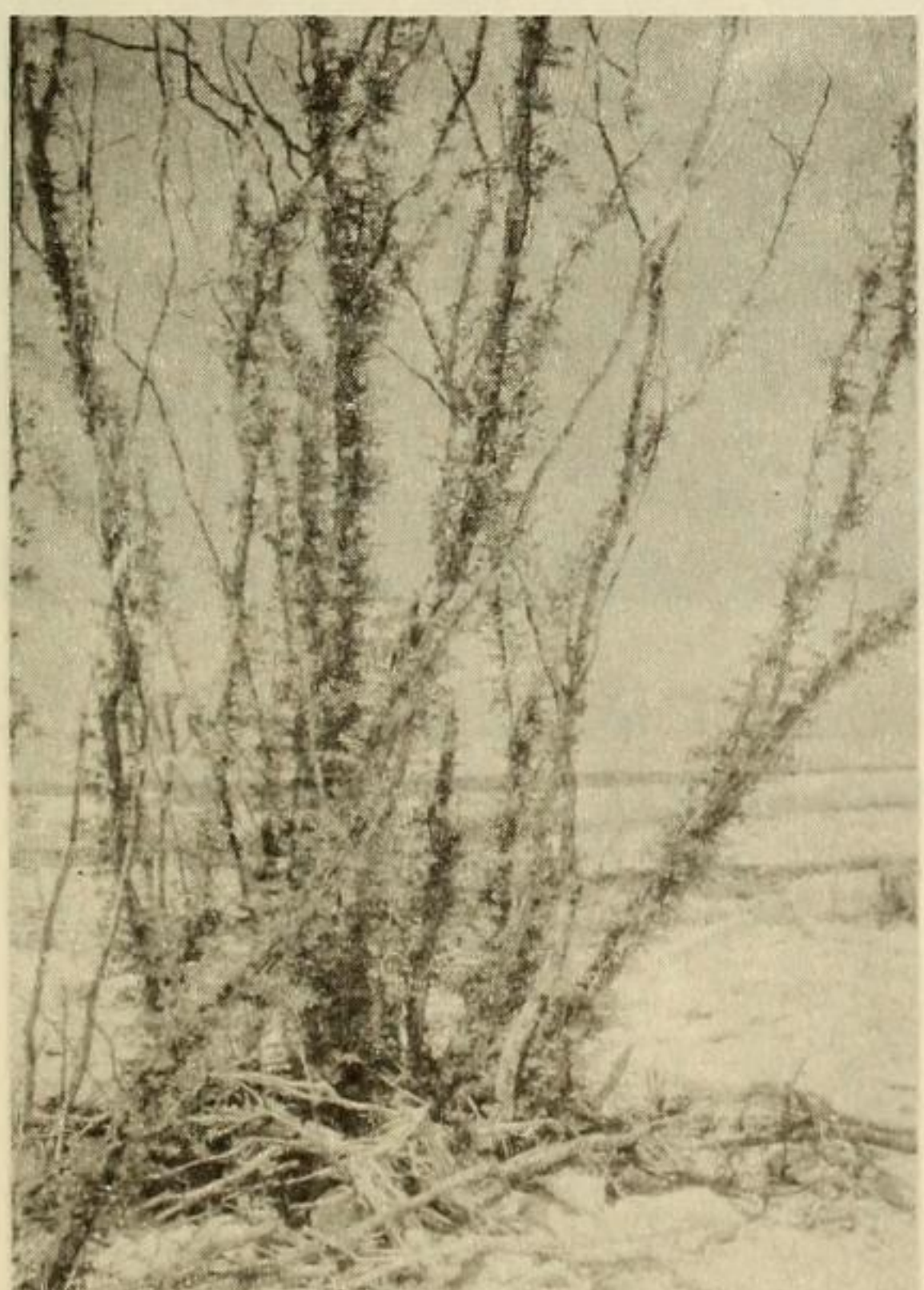


c. Coconut trunks fallen in several directions; (arrow) direction of wind. (Fosberg photo).



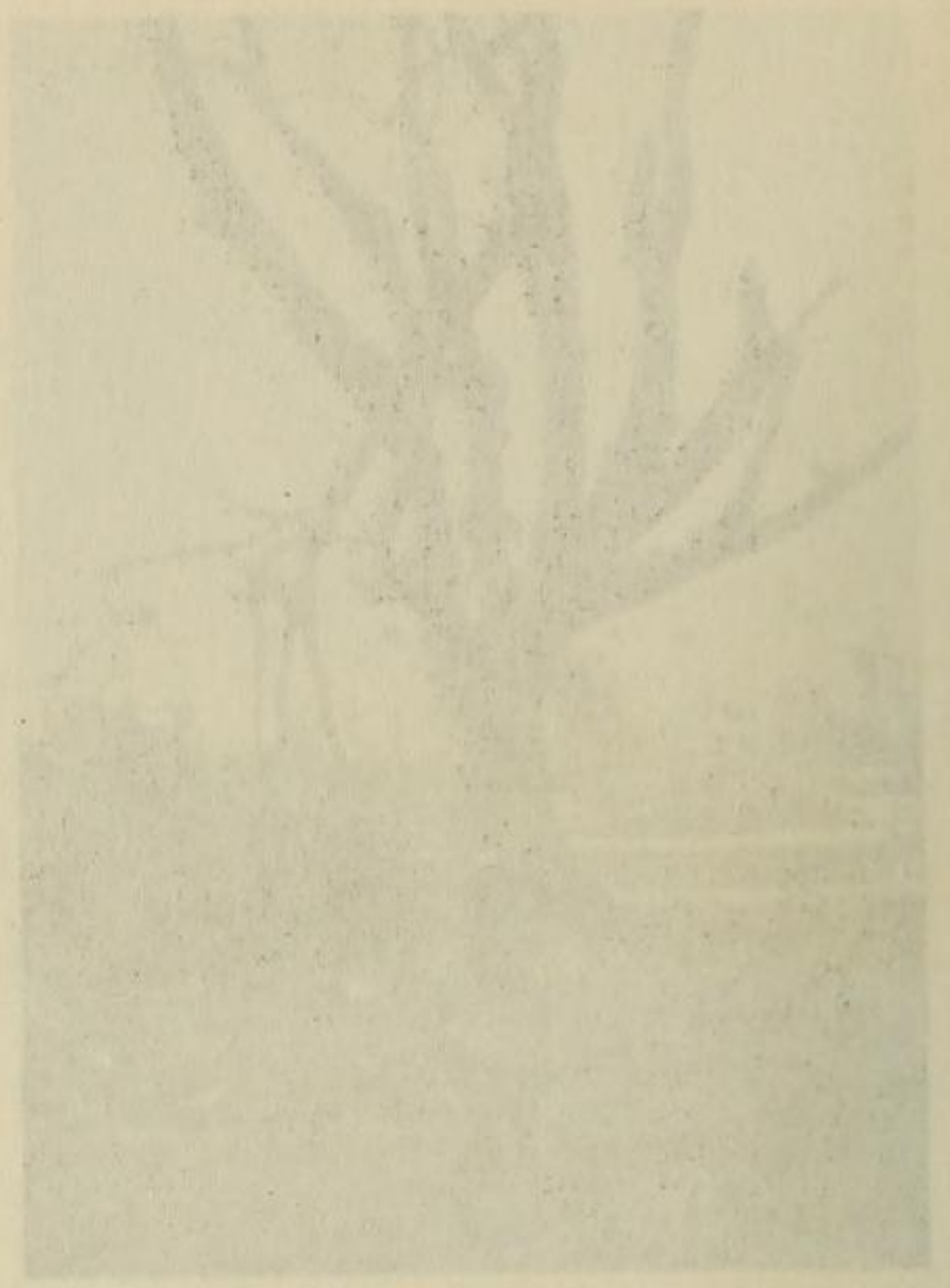
a. Breadfruit tree damaged by wind, broken Pandanus and coconut trees in background, relatively undamaged ground vegetation, area affected by wind only; southeast end of Imroj I. (Fosberg photo).

b. Breadfruit tree with branches stripped off by wind, sending out sprouts with new leaves, ground vegetation of Wedelia favored by increased sun light resulting from typhoon damage to other vegetation, area not inundated; Pinlep I. (Fosberg photo).

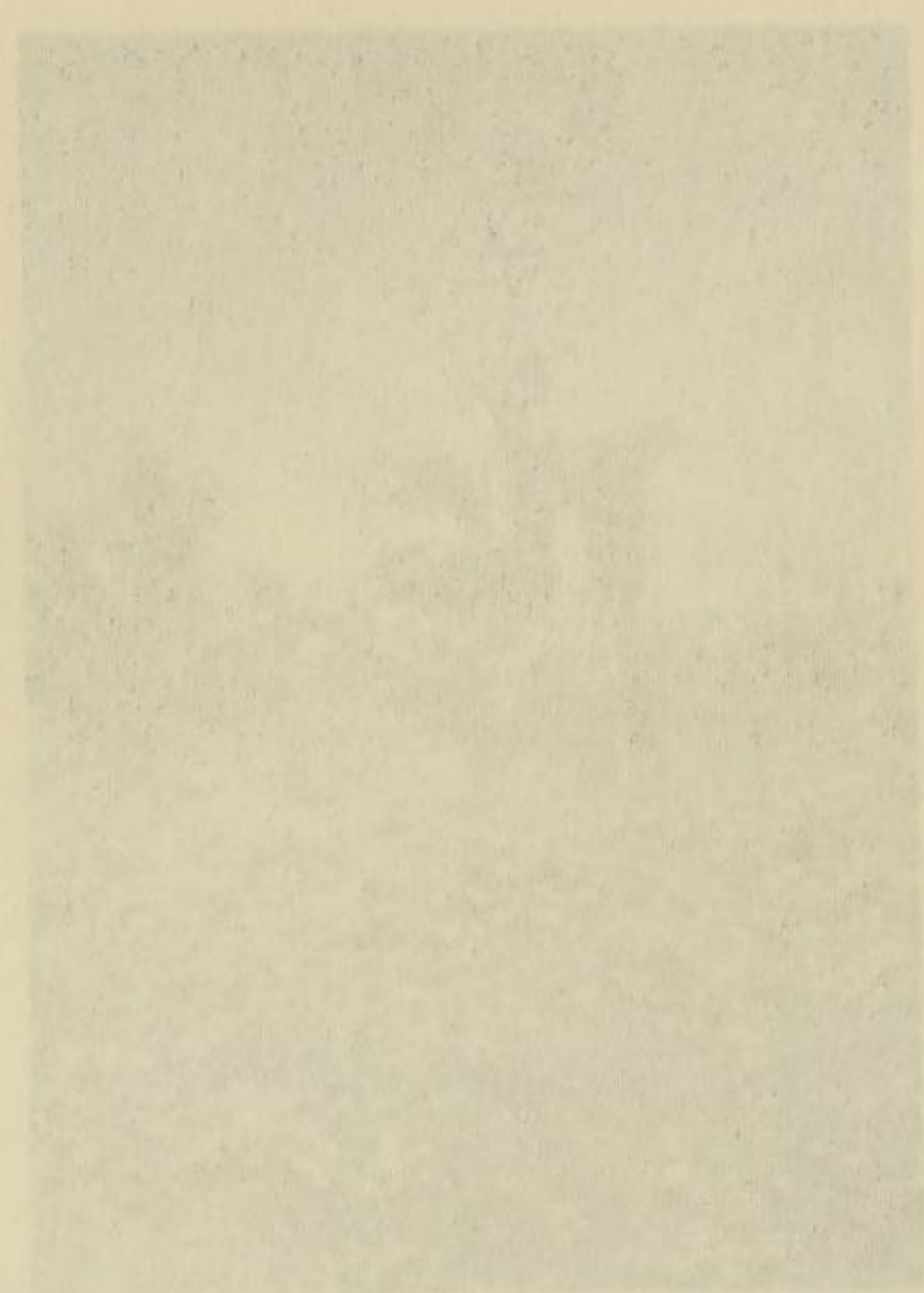


c. Pemphis clump with small branches stripped off but sprouting abundant new twigs and leaves; just south of Jabor. (Wiens photo).

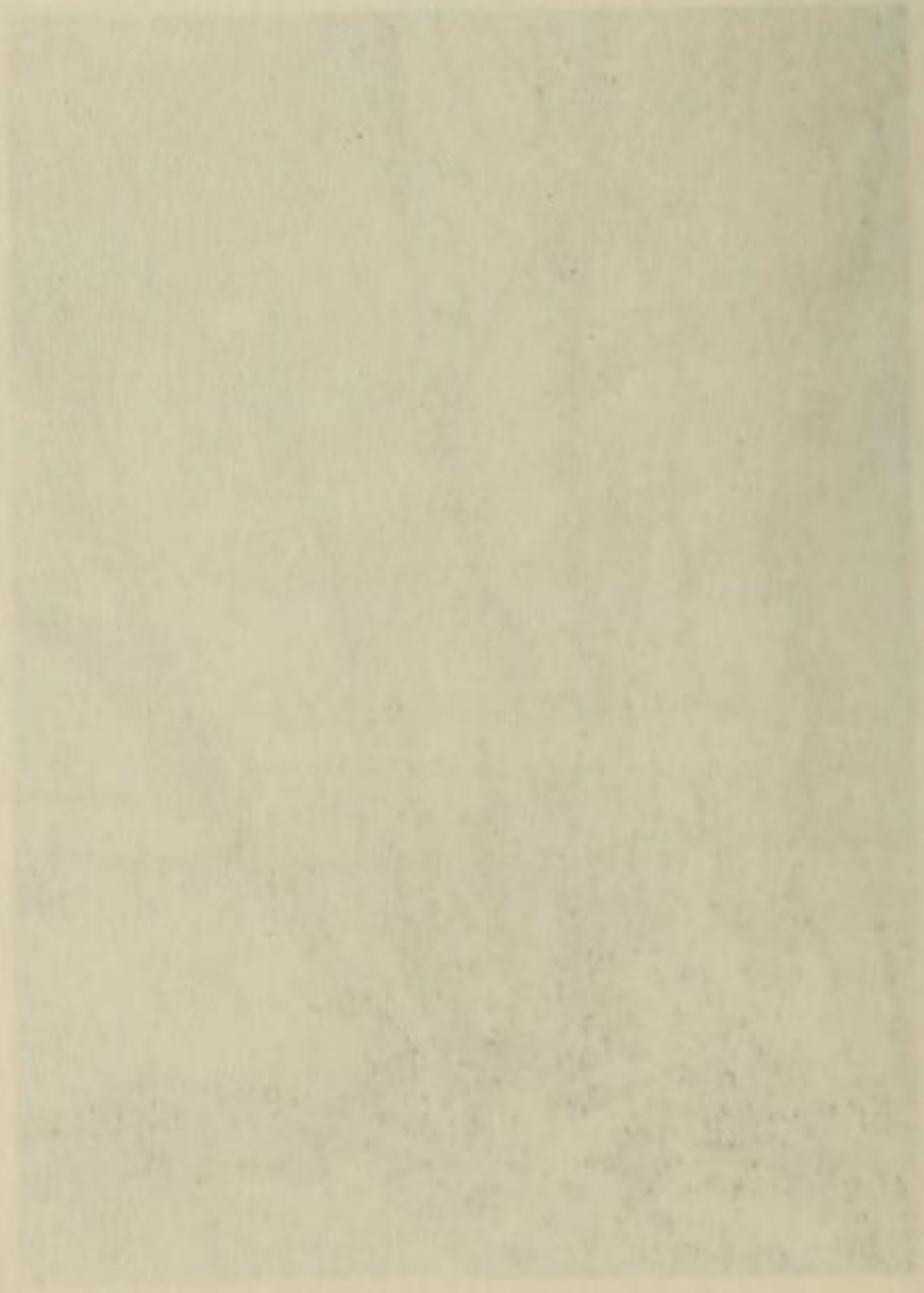
d. Phosphate boulders, part of bed discovered during this investigation; northwest end of Imroj I. (Fosberg photo).



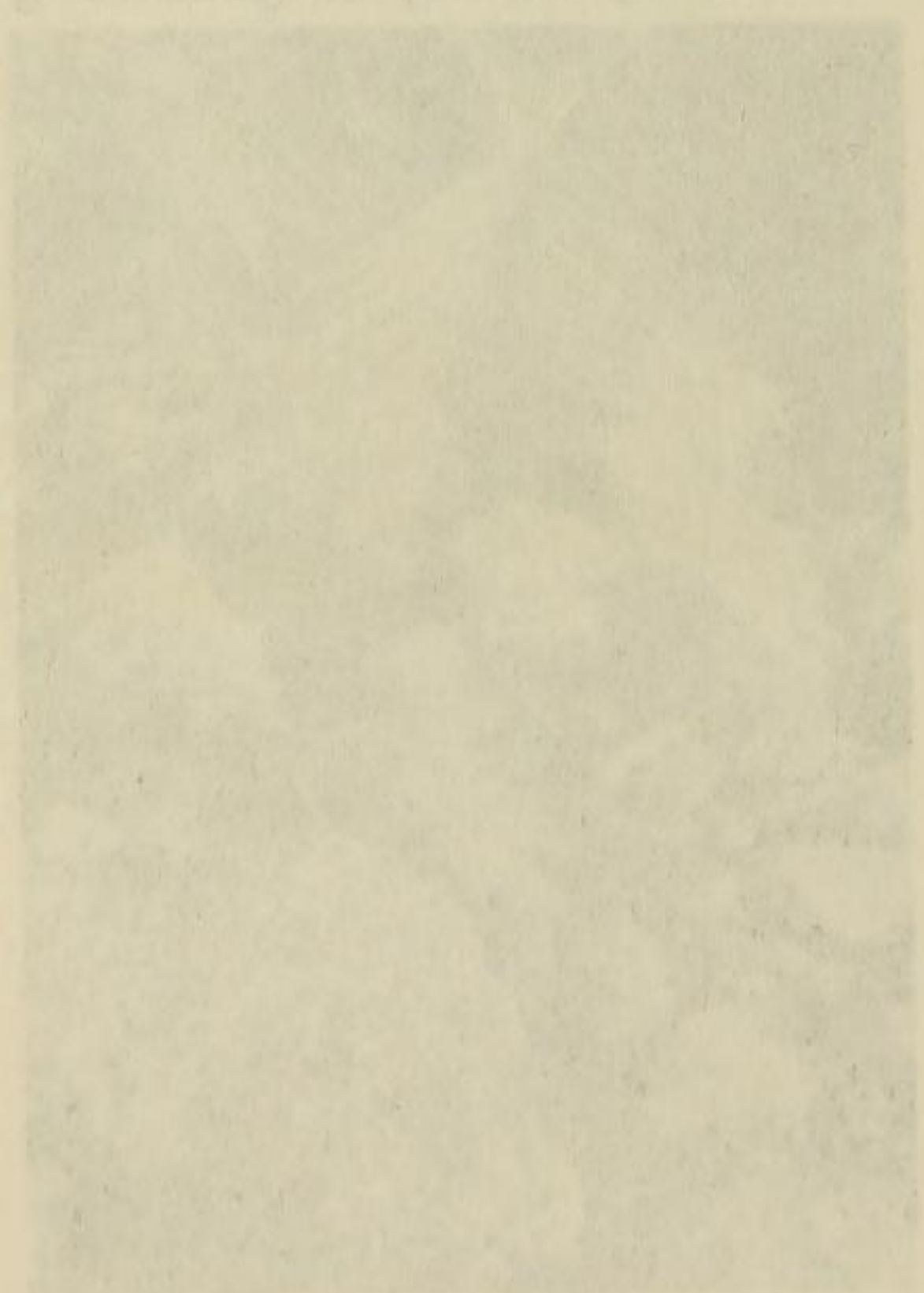
a. Breadfruit tree damaged by wind. Broken Pandanus and coconut trees in background, relatively undamaged ground vegetation. Area affected by wind only; south-east end of Inroj I. (Fosberg photo).



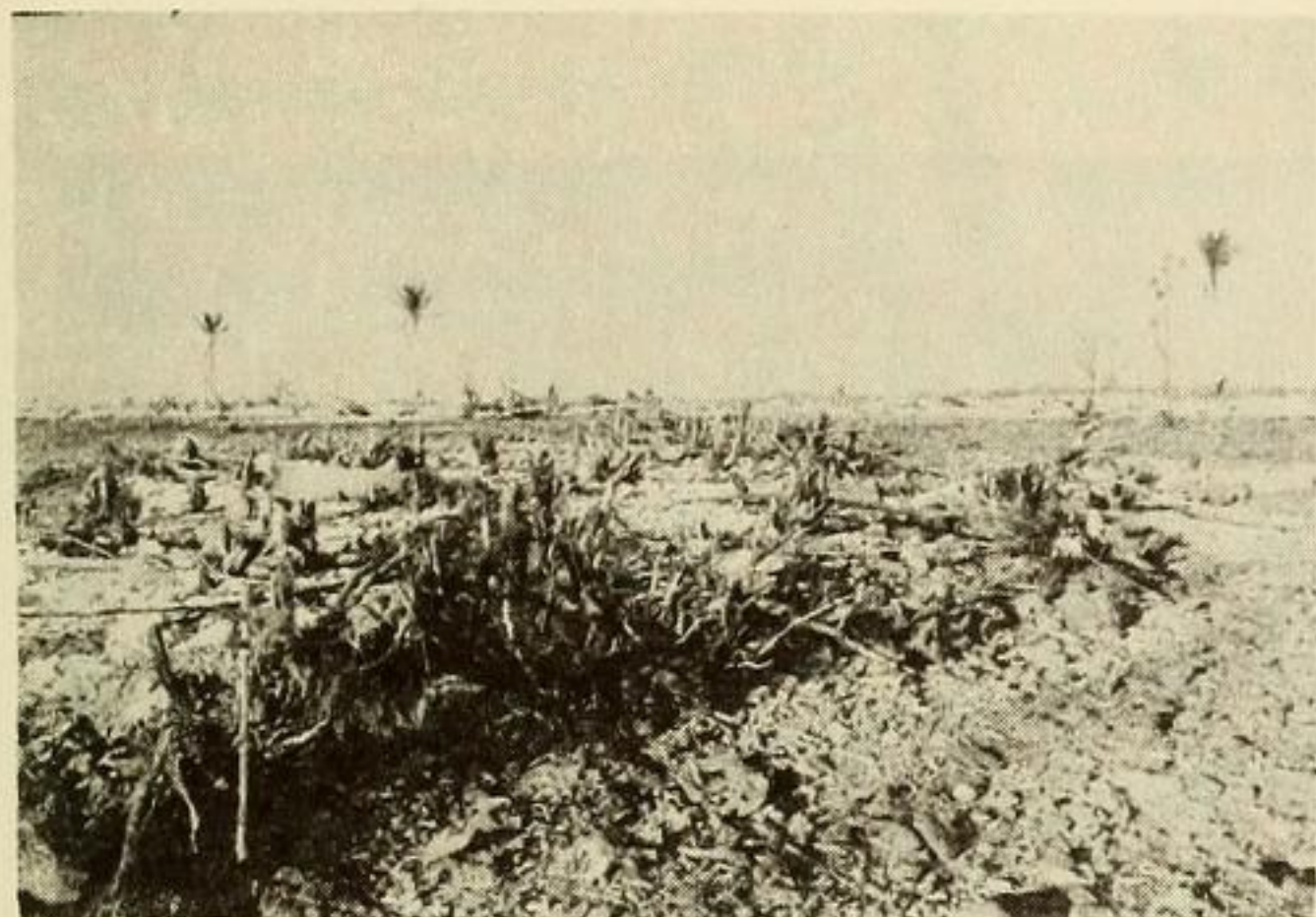
b. Breadfruit tree with branches stripped off by wind, sending out sprouts with new leaves. Ground vegetation of *Wedelia* favored by increased sunlight resulting from typhoon damage to other vegetation. Area not included; Inroj I. (Fosberg photo).



c. Pandanus thicket with small branches stripped off but sprouting abundant new twigs and leaves. (Wrens photo). Just south of Inroj I.



d. Pandanus thicket, part of had discovered during this investigation; southwest end of Inroj I. (Fosberg photo).



a. Broken off Pemphis bushes on conglomerate platform on lagoon shore south of Sydneytown. (Fosberg photo).



b. Taro pit, with Cyrtosperma tops killed by typhoon but otherwise not seriously damaged; Pinlep I. (Fosberg photo).



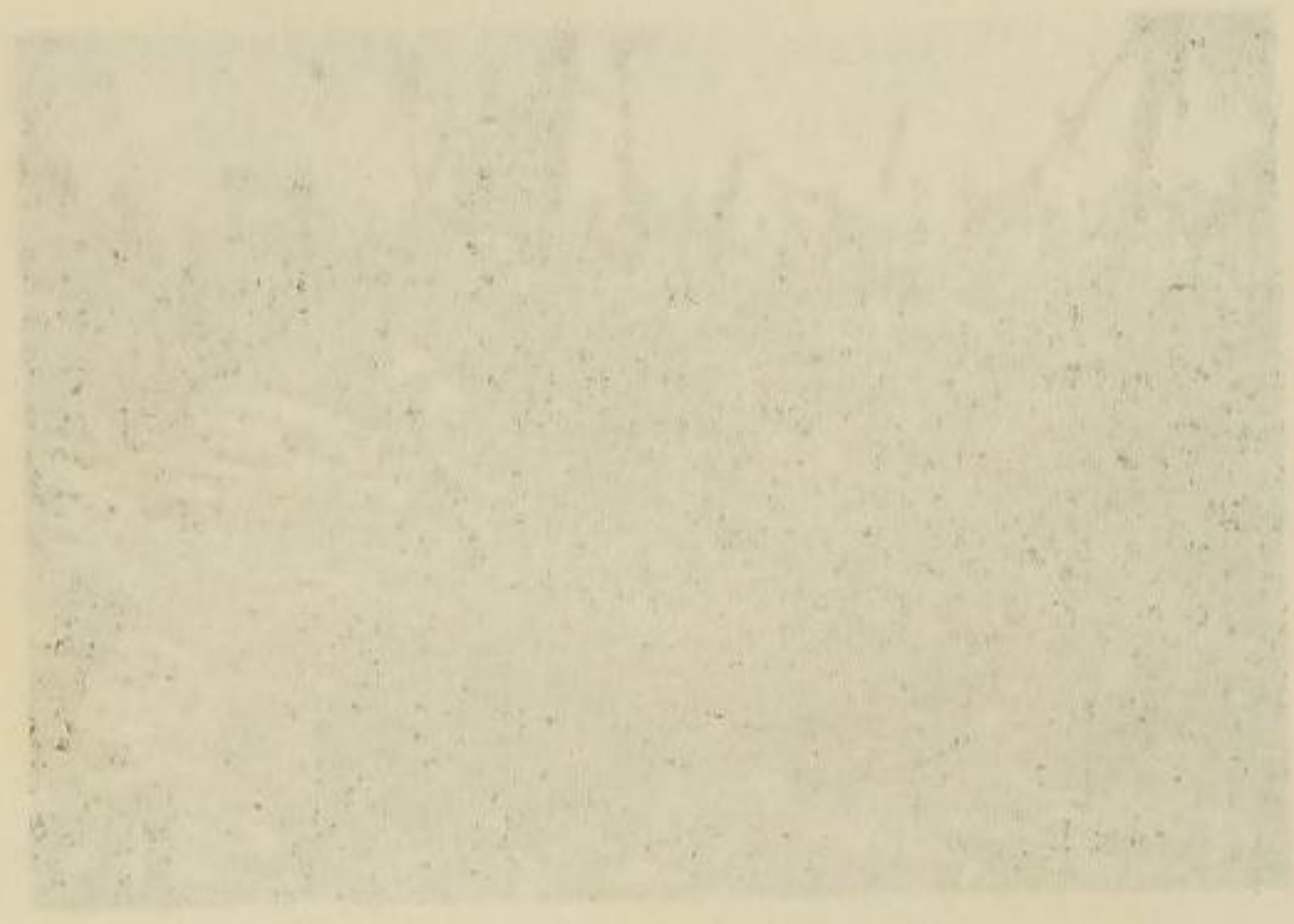
c. Coconut plantation in unindated area, showing damage by wind alone; Pinlep I. (Fosberg photo).



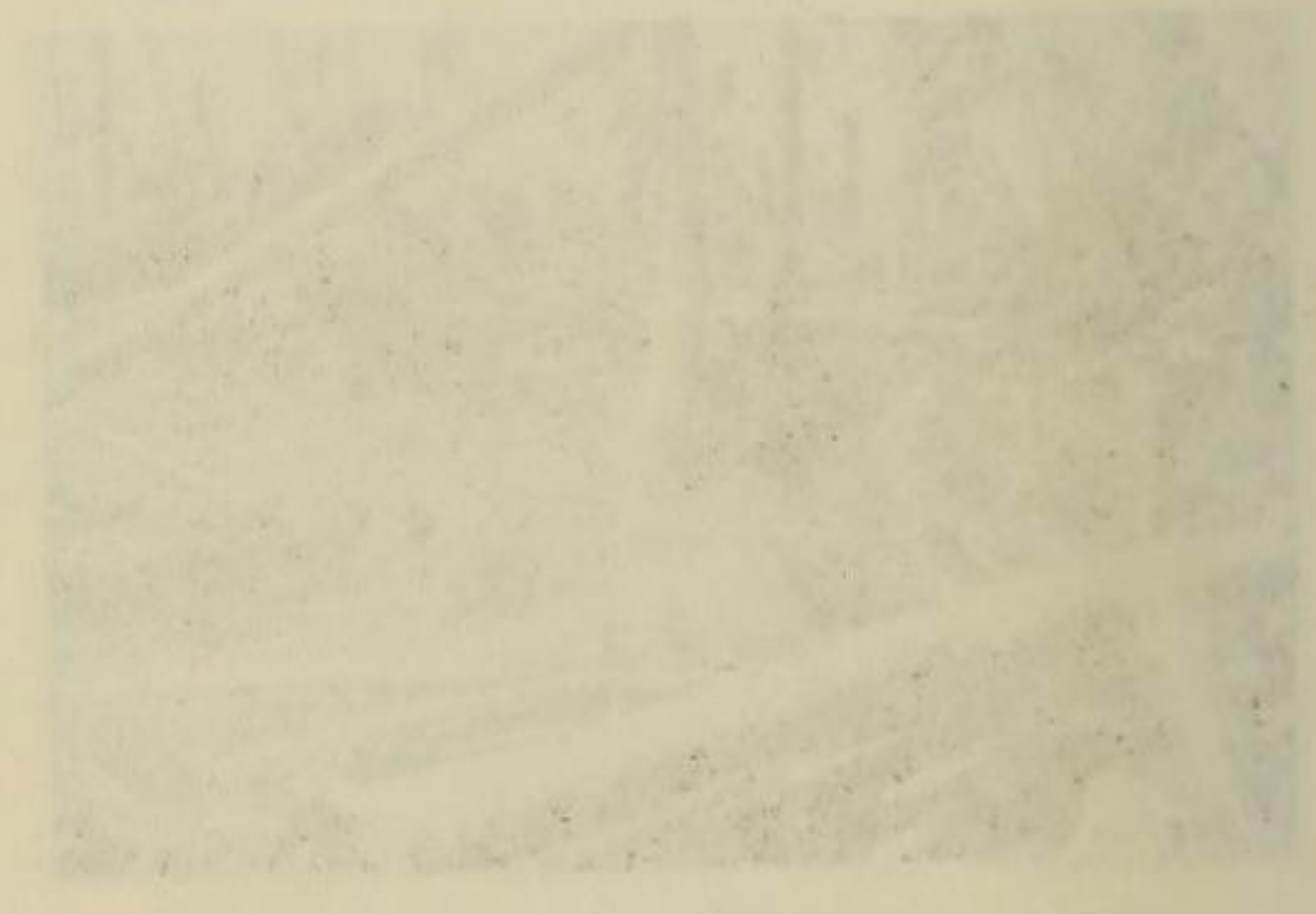
d. Coconut plantation damaged by wind and waves, many trees snapped off, some uprooted, root systems exposed, gravel deposited on soil; showing Marshallese inhabitants. (Gressitt photo).



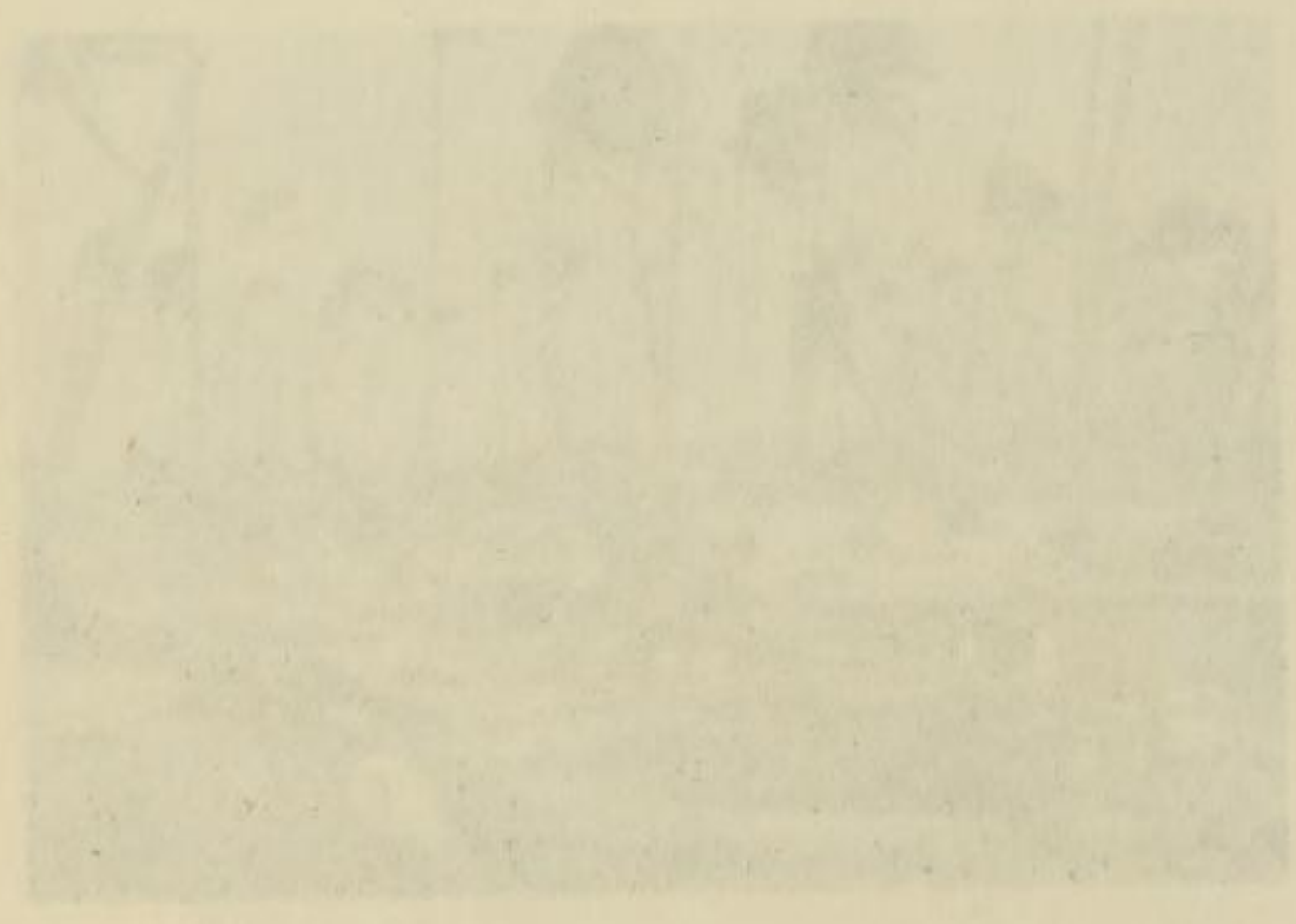
a. Broken off *Pennisetia* bushes on
conglomerate platform on
lagoon shore south of Sydney-
town. (Fosberg photo).



b. Taro pit with *Cyperus*
tops killed by typhoon but
otherwise not seriously
damaged; Philip I. (Fosberg
photo).



c. Coconut plantation in wind-
undated area, showing damage
by wind storm; Philip I.
(Fosberg photo).



d. Coconut plantation damaged
by wind and waves, many
trees snapped off, some up-
rooted, root systems ex-
posed, gravel deposited on
soil, showing Marshallian
inhabitants. (Gressitt photo).



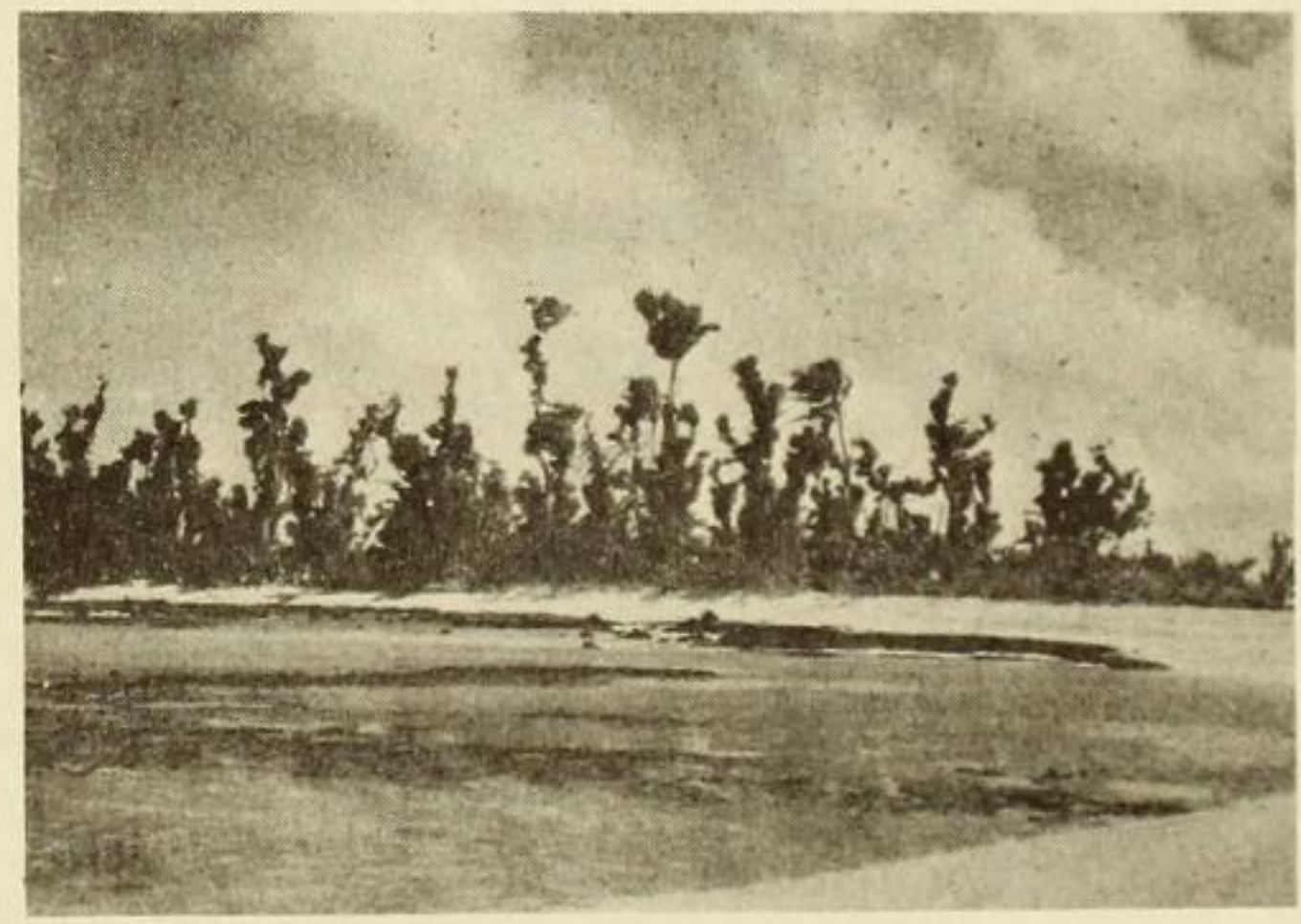
a. Coconut plantation destroyed by wind and waves; Mejatto I. (Wiens photo).



b. Inner margin of fresh gravel sheet; Mejatto I. (Fosberg photo).



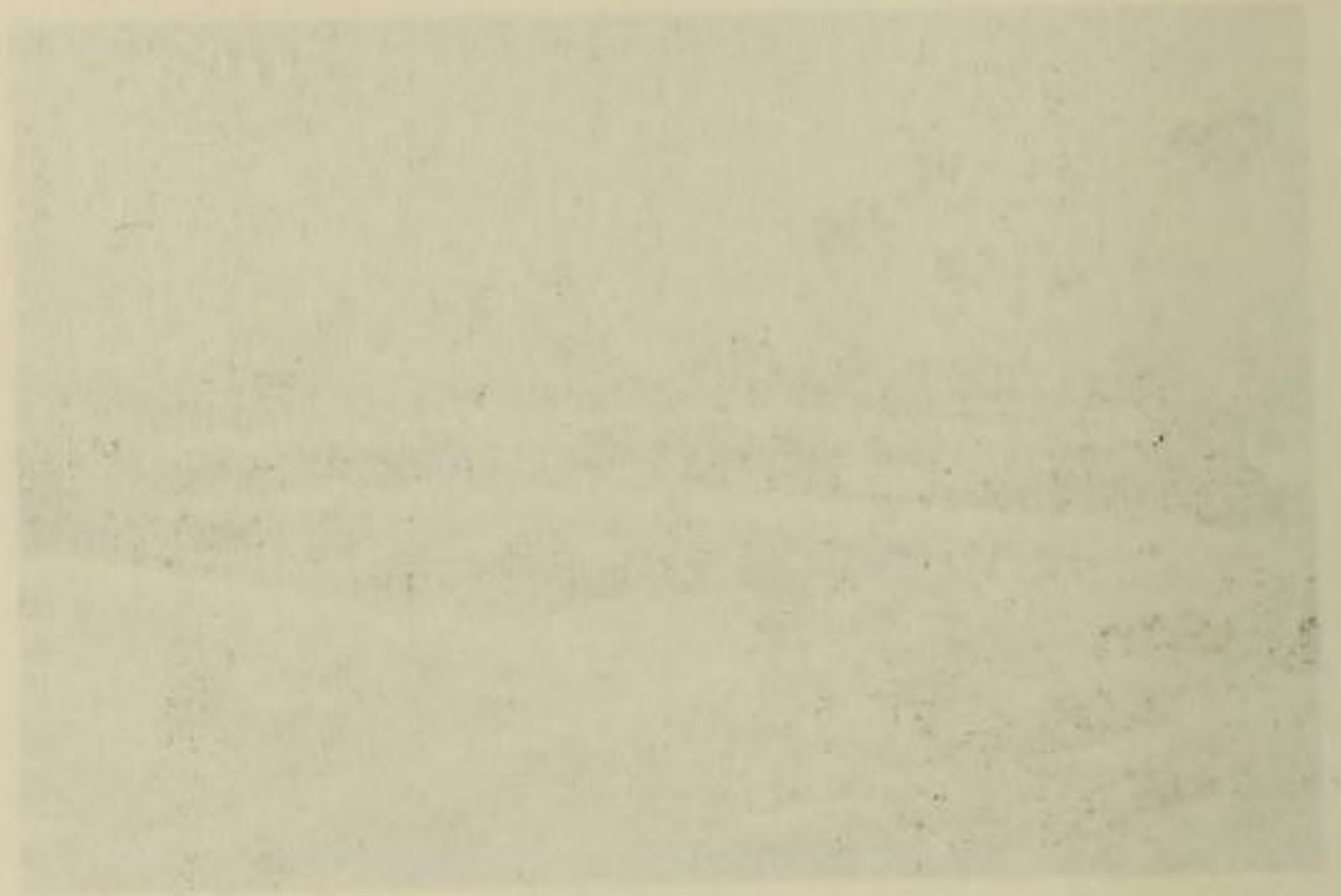
c. Pandanus grove destroyed by wind; Majurirek I. (Fosberg photo).



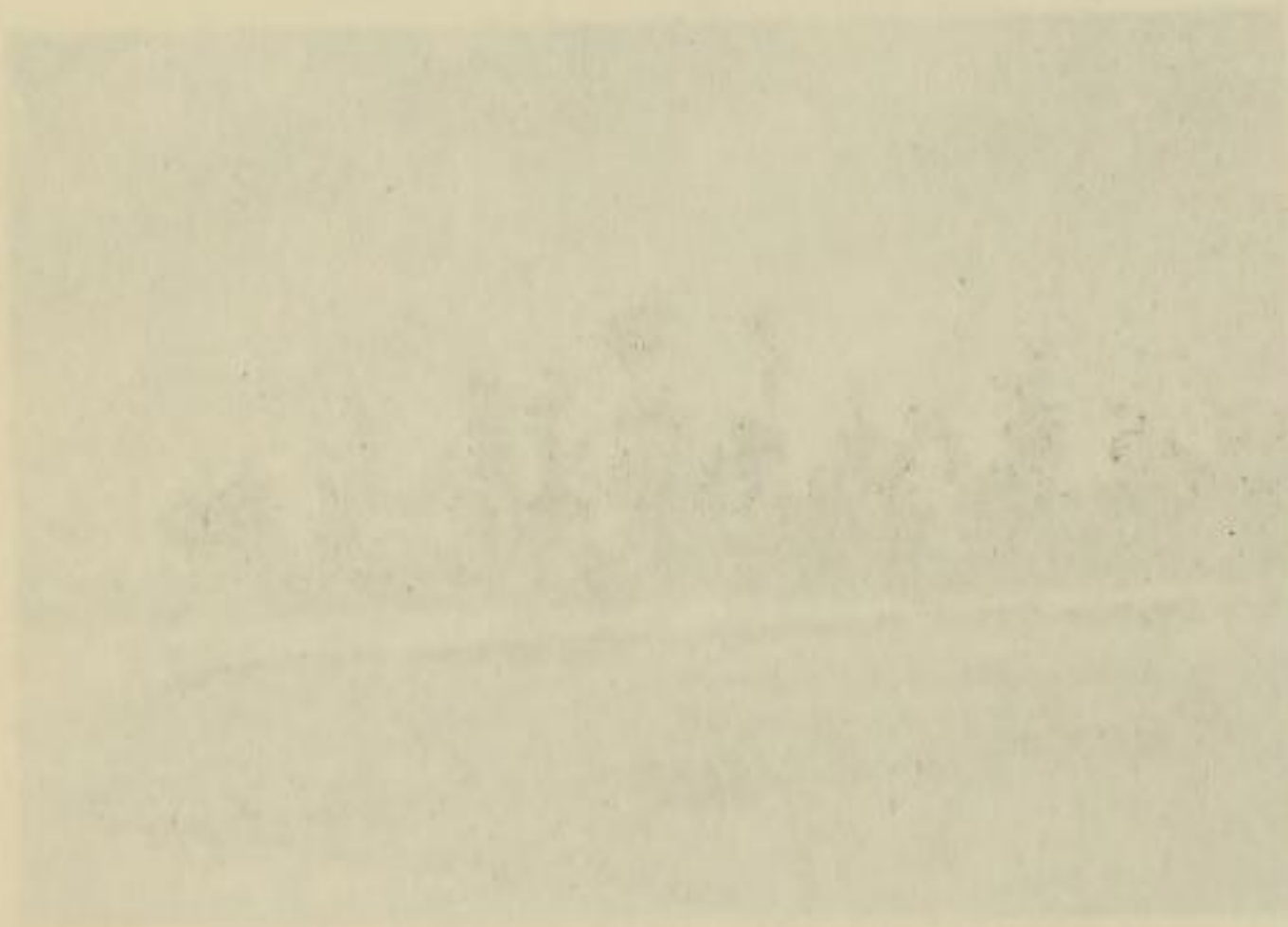
d. Pisonia forest battered by wind, but sprouting vigorously; Lijeron I. (Fosberg photo).



b. Inner margin of fresh gravel sheet; Majaite I. (Fosberg photo).



a. Coconut plantation destroyed by wind and waves; Majaite I. (Wiens photo).



d. Pisonia forest battered by wind, but appearing vigorous; Ijeron I. (Fosberg photo).



c. Pandanus grove destroyed by wind; Majaitek I. (Fosberg photo).