

1967. Some bathyal polynoids from central and north-eastern Pacific. (Polychaeta: Polynoidae). U.S. Natl. Mus., Proc., 121(3575): 1-15, 5 figs.
1969. Review of some species referred to Scalisesus McIntosh (Polychaeta, Polynoidae). Biol. Soc. Wash., Proc., 82: 1-30, 12 figs.
1970. Polychaeta Errantia of the Siboga-Expedition. Part 4. Some additional polychaetes of the Polynoidae, Hesionidae, Nereidae, Goniadidae, Eunicidae, and Onuphidae, selected as new species by the late Dr. Hermann Augener with remarks on the other related species. In Siboga-Exped., Leiden, 24(1d): 1-270, 61 figs.

PFLUGFELDER, O.

1933. Landpolychäten aus Niederländisch-Indien. (Ergebnisse der Sunda-Expedition der Notgemeinschaft der Deutschen Wissenschaft 1929-30). Zool. Anz., 105: 65-76, 17 figs.
1934. Spinndrüsen und Excretionsorgane der Polyodontidae. Zeits. wiss. Zool., 145: 351-365, 12 figs.

PRUVOT, G.

1895. Coup d'oeil sur la distribution générale des invertébrés dans la région de Banyuls (Golfe du Lion). Arch. zool. exp. gén. Paris, (3): 629-658.

QUATREFAGES, A. de

1850. Études sur les types inférieurs de l'embranchement des Annelés. Mémoire sur la famille des Polyophtalmiens, Polyophtalmea Nob. Ann. Sci. nat. Paris, (3)13: 1-24, 1 pl.

1850. (Also: Acad. Sci. Paris, C.R., 30: 813.)
- 1865-1866. Histoire naturelle des Annelés marins et d'eau douce. Annélides et Gephyriens. Paris, Libr. Encycl. du Roret. 1: 1-588, 1865; 2(1): 1-336, 1865; 2(2): 337-794, 1865; 3, atlas, 1866.
- RATHKE, H.
1843. Beiträge zur Fauna Norwegens. Acad. Leop. Carol. Nat. Cur. Halle, Nova Acta., 20: 1-264, pls. 1-12.
- REISH, D.J.
1959. New species of Spionidae (Annelida, Polychaeta) from southern California. So. Cal. Acad. Sci., Bull., 58(1): 11-16, pl. 6.
1968. A biological survey of Bahia de los Angeles, Gulf of California, Mexico. II. Benthic polychaetous annelids. San Diego Soc. Nat. Hist., Trans., 15(7): 67-106, 20 figs.
- RIOJA, E.
1918. Datos para el conocimiento de la fauna de Anélidos poliuetos del Cantábrico, pt. 2. Madrid, Mus. Nac. Cienc. Nat., Trab., ser. zool., 37: 99 pp., 20 figs.
1923. Estudio sistemático de las especies ibéricas del suborden Sabelliformia. Madrid, Mus. Nac. Cienc. Nat., Trab., ser. zool., 48: 1-144, 262 figs.
- RODEN, G.I.
1964. Oceanographic aspects of the Gulf of California. In Andel, T.H. van and G.S. Shor, Jr. Marine geology of the Gulf of California.

Tulsa. Amer. Assn. Petr. Geol., Mem., 3:
30-58, 14 figs., 7 tables.

RULLIER, F.

1965. Contribution à la faune des Annélides polychètes du Dahomey et du Togo. Cahiers ORSTOM, Océanogr., III(3): 5-66, 12 figs.

SAINT-JOSEPH, A. de

- 1886-1895. Les Annélides polychètes des côtes de Dinard. Ann. Sci. Nat., Zool., ptie. 1: (sér. 7)1: 127-270, pls. 7-12, 1886; ptie. 2: (sér. 7) 5: 141-338, pls. 6-13, 1888; ptie. 3: (sér. 7)17: 1-395, pls. 1-13, 1894; ptie. 4: (sér. 7)20: 185-272, pls. 11-13, 1895.
1899. Note sur une nouvelle famille d'Annélides polychètes (Pilargidiens). Paris, Mus. Hist. nat., Bull., 5: 41-42.

SARS, M.

1835. Beskrivelser og iagttagelser over nogle mærkelige eller nye i havet ved den bergenske kyst levende dyr af polypernes, acalephernes, radiaternes, annelidernes, og molluskernes classer, med en kort oversigt over de hidtil af forfatteren sammesteds fundne arter og deres forekommen. Bergen, XII and 81 pp., 15 pls.
1851. Beretning om en i Sommeren 1849 foretagen zoologisk Reise i Lofoten og Finmarken. Nyt Mag. Naturv., 6: 121-211.
- 1862a. Foredrag om de ved Norges Kyster forekommende Arter af den Linnéiske Annelideslægt Sabella. Vidensk. Selsk. Christiania, Forh., 1862: 116-133.

- 1862b. Uddrag af en af detaillerede Afbildninger, ledsaget udførlig Beskrivelse over en Deel norske Annelider. Vidensk. Selsk. Christiania, Forh., 1862: 87-95.
1872. Diagnoser af nye Annelider fra Christianiafjorden. Vidensk. Selsk. Christiania, Forh., 1872: 406-417. (Issued by G.O. Sars).
1873. Bidrag til Kundskab om Christianiafjordens Fauna. III. Annelida. Nyt Mag. Naturv., 19: 201-281, pls. 14-18. (Issued by G.O. Sars).

SAVIGNY, J.C.

1818. Annélides. In Lamarck, J.B. de, Histoire naturelle des animaux sans vertèbres. Paris. 5: 274-374.
1838. Annélides. In Lamarck, J.B. de, Histoire naturelle des animaux sans vertèbres. Deuxième édition. Paris. 5: 539-639.

SCHMARDA, L.K.

1861. Neue wirbellose Thiere beobachtet und gesammelt auf einer Reise um die Erde 1853 bis 1857. 1. Bd. Turbellarien, Rotatorien und Anneliden. 2. Hälfte. Leipzig. 164 pp., 22 pls., 100+ figs.

SÖDERSTRÖM, A.

1920. Studien über die Polychätenfamilie Spionidae. Dissertation. Uppsala, Almqvist and Wiksells. 286 pp., 1 pl., 174 figs.

SOULE, J.D.

1961. The distribution and affinities of the littoral marine Bryozoa (Ectoprocta). In Symposium: The biogeography of Baja California and adjacent seas. Syst. Zool., 9(3): 100-

104, 1 fig. (Incorrectly dated 1960).

SOUTHERN, R.

1914. Archiannelida and Polychaeta. (Clare Island Survey Pt. 47). Roy. Irish Acad., Proc., 31: 1-160, 15 pls.
1921. Polychaeta of the Chilka Lake and also of fresh and brackish waters in other parts of India. Indian Mus., Mem., 5: 563-659, pls. 19-31, 18 figs.

STIMPSON, W.

1853. Synopsis of the marine Invertebrata of Grand Manan: or the region about the mouth of the Bay of Fundy, New Brunswick. Smithson. Contr. Knowl., 6(5): 1-67, pls. 1-3.
1856. Description of some new marine Invertebrata. Acad. Nat. Sci. Phila., Proc., 7: 385-395.

STØP-BOWITZ, C.

- 1948a. Polychaeta from the Michael Sars North Atlantic deep-sea expedition, 1910. In Rep. Sci. Results, Michael Sars N. Atlantic Deep-sea Exped., 1910. Bergen. 5(8): 1-91, 51 figs., 5 tables.
- 1948b. Les flabelligériens norvegiens. Bergens Mus. Aarbok 1946-47, Nat. Sci. Ser., 2: 1-59, 13 figs., 12 charts.

STRELZOV, V.E.

1968. [Polychaete worms of the family Paraonidae (Polychaeta, Sedentaria) of the Barentz Sea.] (In Russian.) Akad. Nauk SSSR. Murmansk. Morsk. Biol. Inst., Trudy, 17(21): 74-95, 9 figs.

TAKAHASHI, K.

1938. Polychaetous annelid [sic] of Izu Peninsula. I. Polychaeta, collected by the Misago during the zoological survey around the Izu Peninsula. Tokyo Bunrika Daigaku, Sci. Rep., Sec. B, 3(57): 193-220, pl. 20.

TAUBER, P.

1879. Annulata Danica. En kritisk revision af de i Danmark fundne Annulata Chaetognatha, Gephyrea, Balanoglossi, Discophoreae, Oligochaeta, Gymnocopa og Polychaeta. Kjöbenhavn, Reitzel. 144 pp.

TREADWELL, A.L.

1906. Polychaetous annelids of the Hawaiian Islands, collected by the steamer ALBATROSS in 1902. U.S. Fish Comm., Bull., 23: 1145-1181, 81 figs.
1914. Polychaetous annelids of the Pacific coast in the collections of the zoological museum of the University of California. Univ. Calif. Publ. Zool., 13: 175-234, 2 pls.
1923. Polychaetous annelids from Lower California with descriptions of new species. Amer. Mus. Novitat., 74: 11 pp., 8 figs.
- 1929a. Lumbrinereis bicirrata, a new polychaetous annelid from Puget Sound. Amer. Mus. Novitat., 338: 3 pp., 7 figs.
- 1929b. New species of polychaetous annelids in the collections of the American Museum of Natural History, from Porto Rico, Florida, Lower California, and British Somaliland. Amer. Mus. Novitat., 392: 13 pp., 36 figs.

- 1941a. Polychaetous annelids from the New England region, Porto Rico and Brazil. Amer. Mus. Novitat., 1138: 4 pp., 12 figs.
- 1941b. Polychaetous annelids from the west coast of Mexico and Central America. (Eastern Pacific Expeditions of the New York Zoological Society. XXIII.) Zoologica, N.Y., 26: 17-24, 21 figs.

USHAKOV, P.V.

1950. [Bristle-worms (Polychaeta) from the Okotsk Sea.] (In Russian.) Akad. Nauk SSSR, Zool. Inst., Issled. Dal'nev. Morei SSSR, 2: 140-234, 2 pls., 39 text figs.
1955. Mnogoshchetinkovye chervi dal'nevostochnykh morei SSSR (Polychaeta of the Far Eastern Seas of the USSR). Akad. Nauk SSSR, Zool. Inst., Opred. po faune SSSR, 56: 1-445, 164 figs.

VERRILL, A.E.

1873. Report upon the invertebrate animals of Vineyard Sound and the adjacent waters, with an account of the physical characters of the region. U.S. Fish. Comm., Rpt. for 1871-72: 295-778.
1881. New England Annelida. Pt. 1. Historical sketch, with annotated lists of the species hitherto recorded. Conn. Acad. Arts Sci., Trans., 4: 285-324, pls. 3-12.
1900. Additions to the Turbellaria, Nemertina and Annelida of the Bermudas, with revisions of some New England genera and species. Conn. Acad. Arts Sci., Trans., 10: 595-671, 1 pl. (pp. 666-668 by K.J. Bush)

VINOGRADOV, K.

1933. Bemerkungen über Polychaeten des Schwarzen Meeres nebst Beschreibung einer neuen Art - Nereis (Ceratonereis) karadagica. Intern. Rev. Ges. Hydrobiol. Hydrogr., 28(5-6): 469-473, 3 figs.

WEBSTER, H.E.

1879. Annelida Chaetopoda of the Virginian coast. Albany Inst., N.Y., Trans., 9: 202-269, 11 pls.

WEBSTER, H.E. and J.E. BENEDICT

1887. The Annelida Chaetopoda from Eastport, Maine. U.S. Fish. Comm., Rpt. for 1885: 707-755, 8 pls.

WESENBERG-LUND, E.

1949. Polychaetes of the Iranian Gulf. In Jessen, K. and R. Spärck. Danish Sci. Invest. Iran. Copenhagen. 4: 247-400, 47 figs., 3 maps, 3 tables.
1950. Polychaeta. In The Danish Ingolf-Exped. Copenhagen. 4(14): 1-92, 10 pls., 2 text figs., 67 charts.

WILLEY, A.

1904. Littoral Polychaeta from the Cape of Good Hope. Linn. Soc. London, Trans., Zool., (Ser. 2) 9(6): 255-268, pls. 13-14.
1905. Report on the Polychaeta collected by Professor Herdman, at Ceylon, in 1902. In Herdman, W.A. Rept. on Ceylon Pearl Oyster Fish. London., 4(Suppl. rpt. 30): 243-324, 8 pls.

WILLIAMS, T.

1852. Report on the British Annelida. Brit. Assn. Adv. Sci., Rpt. for 1851, 21: 159-272, pls. 1-11.

WIRÉN, A.

1883. Chaetopoder från Sibiriska Ishafvet och Berings Haf Insamlade under Vega-Expeditionen 1878-79. In Nordenskiöld, N.A.E. Vega-Exped.- Vetenskapliga Iakttagelser. Stockholm. 2: 383-428, pls. 27-32.

WOLLEBAEK, A.

1912. Nordeuropaeiske Annulata Polychaeta. I. Ammocharidae, Amphictenidae, Ampharetidae, Terebellidae og Serpulidae. Vidensk. Math.-Nat. Kl., Christiania, Skr., vol. for 1911: 1-144, 51 pls.

WU, B.L. and M. CHEN

1964. [A new species of polychaete worm of the family Spionidae from Sisha Islands, with a review of the genus Prionospio Malmgren, 1867.] (In Chinese.) Acta Zool. Sinica, 16: 54-59, 1 pl.

APPENDIX 1.

Species of Neanthes Kinberg, 1866 with reference to original descriptions.

The species have been grouped into subdivisions according to the following scheme:

- I. Falcigers absent
- II. Falcigers present (or presence or absence not known)
 - A. Parapodial lobes with papillae
 - B. Parapodial lobes smooth
 - 1. Dorsal lobe of notopodia barely longer than the other parapodial lobes, usually triangular
 - 2. Dorsal lobe of notopodia longer than the other lobes
 - a. Dorsal lobes large, thick or foliose
 - b. Dorsal lobes slender, long in all setigers
 - c. Dorsal lobes prolonged in posterior setigers
 - C. Development of parapodial lobes unknown

Group I.

agnesiae (Augener, 1918, pp. 194-197, pl. 3, figs. 69-71, pl. 4, figs. 76-77).

chingrihattensis (Fauvel, 1932, pp. 90-91, fig. 14a-h).

mexicana, new species, see above.

virens (Sars, 1835, p. 58; see also Fauvel, 1923, pp. 348-349, fig. 134g-k).

Group IIA.

papillosa (Day, 1963b, pp. 360-362, fig. 2a-g).

Group IIB 1.

- anquisticollis (Augener, 1913, pp. 145-149, pl. 2, fig. 14, textfig. 13a-d).
- agulhana (Day, 1963a, pp. 406-407, fig. 6d-j).
- belawanensis (Pflugfelder, 1933, p. 72, fig. 13a-d).
- caudata (delle Chiaje, 1828, in Quatrefages, 1865, p. 551; see also Fauvel, 1923, pp. 347-348, fig. 135a-e).
- chilkaensis (Southern, 1921, pp. 284-289, pl. 22, fig. 8a-r, textfig. 4a-e).
- cricognatha (Ehlers, 1901, pp. 29-30, pl. 4, figs. 3-7).
- dawydovi (Fauvel, 1937, pp. 297-299, fig. 1a-k).
- diversicolor (O.F. Müller, 1776, p. 217; see also Fauvel, 1923, p. 344, fig. 133a-f).
- glandicineta (Southern, 1921, pp. 589-593, pl. 23, fig. 9a-1, textfig. 5a-e).
- indica (Kinberg, 1866, p. 169).
- indica brunnea Day, 1957, pp. 80-81, fig. 4h-m.
- kerquelensis (McIntosh, 1885, pp. 225-227, pl. 35, figs. 10-12, pl. 16A, figs. 17-18).
- kerquelensis oligodonta Augener, 1913, pp. 164-166.
- meqgitti Monro, 1931, pp. 580-585, figs. 1-6.
- reducta (Southern, 1921, pp. 593-595, pl. 21, figs. 7a-k, textfig. 6a-d).
- roosevelti Hartman, 1939, pp. 11-13, fig. 2c-h.
- talehsapensis (Fauvel, 1932, pp. 93-94, pl. 2, figs. 10-17).
- typhla (Monro, 1930, pp. 105-106, fig. 36a-b).
- unifasciata (Willey, 1905, pp. 271-272, pl. 4, figs. 85-88).
- yaali Kinberg, 1866, p. 171; see also Augener, 1922b, pp. 20-22, fig. 6-6b; GENOTYPE.
- vitabunda (Pflugfelder, 1933, pp. 71-72, fig. 12a-d).

Group IIB 2a.

- articulata Knox, 1960, p. 122, figs. 174-179.
- brandti (Malmgren, 1866, p. 183; see also Hartman, 1968, p. 523).
- fucata (Savigny, 1818, in Audouin and Milne Edwards, 1833, p. 210; see also Fauvel, 1923, pp. 344-346, fig.

134a-f).

ijimai (Izuka, 1912, pp. 174-176, pl. 2, fig. 1, pl. 19, figs. 1-9).

larentukana (Grube, 1881, pp. 110-111).

nanciae (Day, 1949, p. 445, fig. 4a-h).

oxyпода (Marenzeller, 1879, pp. 120-122, pl. 2, fig. 3).

sakhalinensis (Okuda, 1935, pp. 1-4, figs. 1-3).

succinea (Frey and Leuckart, 1847, p. 154; see also Fauvel, 1923, pp. 346-347, fig. 135f-m).

verrillii (Grube, 1878, pp. 78-79, pl. 5, fig. 2).

willeyi (Day, 1934, pp. 39-40, fig. 6a-b; see also Willey, 1904, p. 261, pl. 13, fig. 10, pl. 14, figs. 9-10).

Group IIB 2b.

crucifera (Grube, 1878, pp. 80-81, pl. 5, fig. 6).

longilingulis (Monro, 1937, pp. 277-279, fig. 9a-m, partim).

mossambica (Day, 1957, pp. 78-80, fig. 3e-k).

IIB 2c.

noodti Hartmann-Schroeder, 1962, pp. 129-130, pl. 11, figs. 65-66, pl. 12, fig. 68, pl. 20, fig. 67.

ruficeps (Ehlers, 1905, pp. 24-25, pl. 3, figs. 10-15).

seridentata Hartmann-Schroeder, 1959, pp. 138-142, figs. 100-110.

Group IIC.

augeneri (Gravier and Dantan, 1934, pp. 52-54, figs. 12-13).

APPENDIX 2.

Survey of onuphids with modified anterior segments, with reference to the original descriptions and type localities.

Paranorthia Moore, 1903, p. 448.

atlantica Hartman, 1965b, pp. 109-110, pl. 18, figs. e-f; Mid-Atlantic Ridge.

brevicornuta, Moore, 1903, pp. 448-451, pl. 25, figs. 52-56; Japan; GENOTYPE.

fissurata, new species

macrobranchiata (McIntosh, 1885, pp. 320-322, figs. 77-78, pl. 41, figs. 1-3, pl. 22A, figs. 6-7); Japan.

Rhamphobranchium Ehlers, 1887, p. 70.

agassizii Ehlers, 1887, pp. 70-73, pl. 17, figs. 1-5, pl. 18, figs. 1-9; off Florida; GENOTYPE.

bipes Monro, 1937, pp. 293-295, figs. 16a-h; Arabian Sea.

brevibranchiata (Ehlers, 1875, pp. 49-52, pl. 3, figs. 11-21); Northeastern Atlantic Ocean.

capense Day, 1960, pp. 355-356, figs. 11i-1; off South Africa.

chuni Ehlers, 1908, pp. 76-78, pl. 9, figs. 6-15; off East Africa.

cristobalensis Fauchald, 1968, pp. 44-46, pl. 12, figs. b-i; western Mexico.

diversosetosum Monro, 1937, pp. 295-297, figs. 17a-1; Maldive Islands.

ehlersi Monro, 1930, pp. 126-128, figs. 46a-i; South Shetland Islands.

hartmanae Friedrich, 1956, pp. 63-65, figs. 5a-c; El Salvador.

longisetosum Berkeley and Berkeley, 1938, pp. 428-435, figs. 1-8; southern California.

- maculatum Estcourt, 1966, pp. 205-207, figs. 1-3;
New Zealand.
- pacifica Hoagland, 1920, pp. 618-619, pl. 49, figs.
15-23; Philippine Islands.
- vernigreni (Kinberg, 1865, p. 560); Brazil.

APPENDIX 3.

Species assigned to Pherusa or related genera in the family FLABELLIGERIDAE, with reference to the original descriptions.

Genus Diplocirrus Haase, 1915

- capensis Day, 1961, pp. 509-510, fig. 9a-f; South Africa.
- glaucus (Malmgren, 1867, p. 192, pl. 14, f. 78); Sweden;
see also Haase, 1915, pp. 195-197, fig. 3, and
Støp-Bowitz, 1948b, pp. 25-28, fig. 6. GENOTYPE.
- hirsutus (Hansen, 1879, pp. 9-10, pl. 8, figs. 1-4) North
Sea; see also Haase, 1915, pp. 198-200 and Støp-
Bowitz, 1948b, pp. 28-30, fig. 7.
- longisetosus (Marenzeller, 1890, p. 5, fig. 3); Bering Sea;
see also Haase, 1915, pp. 200-202, figs. 6-7 and
Støp-Bowitz, 1948b, pp. 30-33, fig. 8.
- micans, new species.

Genus Ilyphagus Chamberlin, 1919

- ascendens Chamberlin, 1919, pp. 403-404; Galapagos Islands.
- bythincola Chamberlin, 1919, pp. 402-403, pl. 69, figs. 4-9;
off western Mexico.
- coronatus Monro, 1939, pp. 130-131, fig. 19; Antarctic
Ocean.
- hirsutus Monro, 1937, pp. 304-305, fig. 22; Arabian Sea.
- ilyvestis Hartman, 1960, pp. 130-134, pl. 13, figs. 1-3;
southern California.

octobranchus Hartman, 1965b, pp. 178-179, pl. 39; off New England.

pluto Chamberlin, 1919, p. 403; off Peru.

wyvillei (McIntosh, 1885, pp. 366-370, pl. 44, fig. 6, pl. 23A, figs. 11-14, pl. 36A, figs. 5-7, pl. 37A, fig. 1); Antarctic Ocean; see also Hartman, 1966, pp. 41-42.

Genus Pantothrix Chamberlin, 1919

chilensis (Schmarda, 1861, pp. 21-22, pl. 20, fig. 170, 4 textfigs.); off Chile.

Genus Pherusa Oken, 1807

Group A. Four pairs of branchiae present.

dubia (Treadwell, 1929b, pp. 9-10, figs. 25-27); Florida; see also Hartman, 1957, p. 295.

falcata Støp-Bowitz, 1948b, pp. 22-24, fig. 5; Norway.

havaica (Kinberg, 1867, pp. 337-338); Hawaii; see also Kinberg, 1910, p. 68, pl. 26, fig. 1 and Hartman, 1948, p. 118, pl. 15, figs. 5-6.

kerquelarum (Grube, 1877, p. 539); Kerguelen Islands; see also Hartman, 1966, p. 43, pl. 13, figs. 1-2.

neopapillata Hartman, 1961, pp. 121-122, pl. 25, figs. 1-2, pl. 26, figs. 1-7; southern California.

papillata (Johnson, 1901, p. 416, pl. 12, figs. 122-123); Washington.

plumosa (O.F. Müller, 1776); Norway; see also Fauvel, 1927, pp. 116-117, fig. 41a-g and Støp-Bowitz, 1948b, pp. 13-18, fig. 2.

plumosa africana (Rullier, 1965, pp. 47-48, fig. 9a-e); Dahomey.

schmidtii (Annenkova, 1924, pp. 126-127); North Pacific Ocean; see also Ushakov, 1955, p. 309, fig. 114d-e.

tenera (Grube, 1868, pp. 636-637); Red Sea.

Group B. Many pairs of branchiae present.

1. With a dorsal shield on some anterior setigers.
 - arenosa (Webster, 1879, pp. 245-246, pl. 7, figs. 92-97); Virginia.
 - inflata (Treadwell, 1914, pp. 213-214, pl. 12, fig. 33); California.
 - kinsemboanus (Augener, 1918, pp. 440-442, pl. 6, fig. 150, pl. 7, fig. 214, textfig. 64); West Africa; see also Kirkegaard, 1959, p. 44.
 - parmata (Grube, 1877, p. 71); Philippine Islands; see also Grube, 1878, pp. 199-201, pl. 11, fig. 1 and Day, 1967, pp. 659-660, fig. 32.2a-c.

2. Dorsal shield absent.

- a. Branchiae in a single row, rolled in at the distal corners.

capitata Nonato, 1966, pp. 71-73, figs. 10-12; Brazil.

laevis (Stimpson, 1856, p. 391); South Africa; see also Day, 1967, pp. 661-662, fig. 32.3a-c.

monroi (Day, 1957, pp. 103-104, fig. 6n-p); South Africa.

rudis (Grube, 1877, p. 71); Brazil.

saldahna Day, 1961, p. 508, fig. 8b-d; South Africa.

swakopiana (Augener, 1918, pp. 433-437, pl. 7, fig. 234, textfigs. 61-62); Southwest Africa; see also Day, 1967, p. 661.

- b. Branchiae in several rows or irregularly scattered.

abyssalis, new species.

bengalensis (Fauvel, 1932, pp. 180-182, textfigs. 30a-f); India.

capulata (Moore, 1909, pp. 284-286, pl. 9, figs. 60-61); California.

eruca (Claparède, 1870a, pp. 105-107, pl. 25, fig. 2); Mediterranean Sea.

eruca indica (Fauvel, 1928, pp. 95-96, fig. 3h-1); Krusadai Island, India.

heteropapillata Hartmann-Schroeder, 1965, p. 227, figs. 222-223; Chile.

monilifera (delle Chiaje, 1841, p. 75); Gulf of Naples; see also Fauvel, 1927, pp. 118-119, fig. 42a-g.

Group C. Branchial numbers and distribution unknown.

aspera (Stimpson, 1853, pp. 31-32); eastern Canada.

atentacula (Hoagland, 1920, pp. 625-626, pl. 52, figs. 1-4); Philippine Islands.

curvisetis (Caullery, 1944, pp. 34-35, fig. 25a-f); Indonesia.

granulosa (Caullery, 1944, p. 32, fig. 23a-i); Indonesia.

gymnopapillata Hartmann-Schroeder, 1965, pp. 228-229, figs. 224-225; Chile.

incerta (Augener, 1918, pp. 442-444, pl. 6, fig. 156, pl. 7, figs. 235-236, textfig. 65); West Africa.

negligens (Berkeley and Berkeley, 1950, pp. 58-59, fig. 4); western Canada.

tumbensis Hartmann-Schroeder, 1962, pp. 153-154, figs. 199-200, Peru.

Genus Piromis Kinberg, 1867

americana (Monro, 1928, pp. 96-97, fig. 16); Pacific side of Panama.

arenosus Kinberg, 1867, p. 338; South Africa; see also Hartman, 1948, p. 117, pl. 15, figs. 7-9 and Day, 1967, p. 664, fig. 32.

bifidus (Fauvel, 1932, p. 182); Arabian Sea.

gracilis Hartman, 1961, pp. 123-124, pl. 29, figs. 1-4, pl. 30, figs. 1-9; Pacific side of Guatemala.

hamocarens (Monro, 1937, pp. 302-303, fig. 21a-c); Arabian Sea.

hospitis, new species.

roberti (Hartman, 1951, p. 99, pl. 26, figs. 1-4); Texas.

tropica (Augener, 1918, pp. 437-440, pl. 7, figs. 220-221); West Africa.

Genus Therochaeta Chamberlin, 1919

collarifera (Ehlers, 1887, pp. 161-164, pl. 43, figs. 2-7); Florida; see also Hartman, 1965b, p. 180, pl. 40.

coronata (Ehlers, 1908, pp. 121-123, pl. 16, figs. 3-8); Indian Ocean.

flabellata (M. Sars, 1872, p. 409); Norway; see also Fauvel, 1927, p. 117, fig. 41h-m and Støp-Bowitz, 1948b, pp. 18-20, fig. 3.

pacifica, new species.

scutigera (Ehlers, 1887, pp. 165-168, pl. 42, figs. 1-5); Cuba.

scutigeroides (Augener, 1918, pp. 444-447, pl. 6, figs. 155 and 185, textfig. 66); West Africa.

APPENDIX 4.

Species of Amage with reference to the original descriptions.

adspersa (Grube, 1863, pp. 57-58, pl. 6, fig. 2); Mediterranean.

anops (Johnson, 1901, pp. 424-425, pl. 15, figs. 157-161, pl. 16, figs. 162-163); Northeastern Pacific Ocean.

arieticornuta Moore, 1923, pp. 207-210, pl. 17, figs. 14-18; California.

- asiaticus Ushakov, 1955, p. 378, fig. 140a-e; Northwestern Pacific Ocean.
- auricula Malmgren, 1867, p. 371, pl. 25, fig. 72; Sweden; GENOTYPE.
- auricula sibogae Caullery, 1944, pp. 92-94, fig. 75a-f; East Indies; here considered a distinct species.
- longibranchiata Hartman, 1960, pp. 153-154, pl. 17; California.
- delus (Chamberlin, 1919, pp. 455-456, pl. 77, fig. 13); Gulf of California.
- perfecta Moore, 1923, p. 210; erected as a synonym of A. anops.
- scotica Clark, 1952, pp. 19-21, fig. 4a-b; Scotland.
- sculpta Ehlers, 1908, pp. 141-143, pl. 20, figs. 1-9; Antarctica.
- scutata Moore, 1923, pp. 210-212, pl. 17, figs. 19-14; southern California.
- tumida Ehlers, 1887, pp. 220-225, pl. 48, figs. 10-19; Florida.

APPENDIX 5.

Species of Melinna referred to sub-groups in the genus, with reference to the original descriptions.

- I. Fifteen thoracic setigers
M. plana, new species.
- II. Sixteen thoracic setigers
M. aberrans Fauvel, 1932, pp. 221-223, pl. 99, figs. 21-26, India.
- III. Seventeen thoracic setigers
a. Transverse membrane smooth
M. fauchaldi Gallardo, 1967, pp. 127-128, pl. 57, 11-12; South Viet Nam.
M. palmata Grube, 1870, pp. 68-69; Mediterranean; see also Fauvel, 1927, p. 239, fig. 83a-h.

- b. Transverse membrane dentate
 - M. denticulata Moore, 1908, p. 340; Alaska; see also Moore, 1905b, pp. 851-853, pl. 44, figs. 9-10.
- IV. Eighteen thoracic setigers
 - a. Transverse membrane smooth
 - M. marchadi Fauvel and Rullier, 1957, pp. 967-969, fig. 6a-f; western Africa.
 - M. monoceroides Fauvel, 1936b, pp. 93-95, fig. 12a-c; Morocco.
 - b. Transverse membrane dentate
 - M. cristata (Sars, 1851, p. 205, pl. 2, figs. 1-7); see also Malmgren, 1867, pp. 371-372, pl. 20, fig. 50 and Fauvel, 1927, pp. 237-238, fig. 83i-n.
 - M. exilia, new species.
 - M. heterodonta Moore, 1923, pp. 212-213, pl. 17, fig. 25; southern California.
 - M. maculata Webster, 1879, pp. 261-262, pl. 10, figs. 145-147; Virginia.
 - M. malmgreni Caullery, 1944, pp. 99-100, fig. 81; East Indies.
 - M. oculata Hartman, 1969, pp. 567-568; southern California.
 - M. parumdentata Ehlers, 1887, pp. 214-220, pl. 50, figs. 1-9; Florida.
 - M. tentaculata, new species.
 - M. uruguayi Hesse, 1917, p. 93, pl. 1, fig. 4; textfig. 7; Uruguay.
- V. Number of thoracic setigers unknown
 - a. Transverse membrane smooth
 - M. buskii McIntosh, 1922, pp. 9-10, pl. 2, fig. 10; Antarctica.
 - b. Transverse membrane dentate
 - M. armandi McIntosh, 1885, pp. 439-440, pl. 48, fig. 5, pl. 27A, figs. 13 and 15; New Zealand.
 - M. elisabethae McIntosh, 1914, pp. 106-108; Arctic Ocean; see also McIntosh, 1922, pp. 86-88, pl.

119, fig. 1 and pl. 125, fig. 2.

M. ochotica Ushakov, 1950, p. 217, pl. 2, fig. 11;
Northwestern Pacific Ocean.

M. pacifica McIntosh (1885) and M. profunda Augener (1906)
lack nuchal hooks and are referable to the genus Melinnexis.

PLATES

PLATE 1

Subadyte mexicana, new species

- a. Median parapodium, anterior view, 26x
- b. Notoseta, 285x
- c. Distal end of notoseta, 570x
- d. Distal end of neuroseta, 635x
- e. Neuroseta, 285x

Sthenolepis spargens, new species

- f. Posterior paradium, postsetal view, 58x
- g. Neuroseta, 570x
- h. Notoseta, 570x
- i. Anterior end, 25x

Sthenolepis areolata (McIntosh, 1885)

- j. Neuroseta, 570x

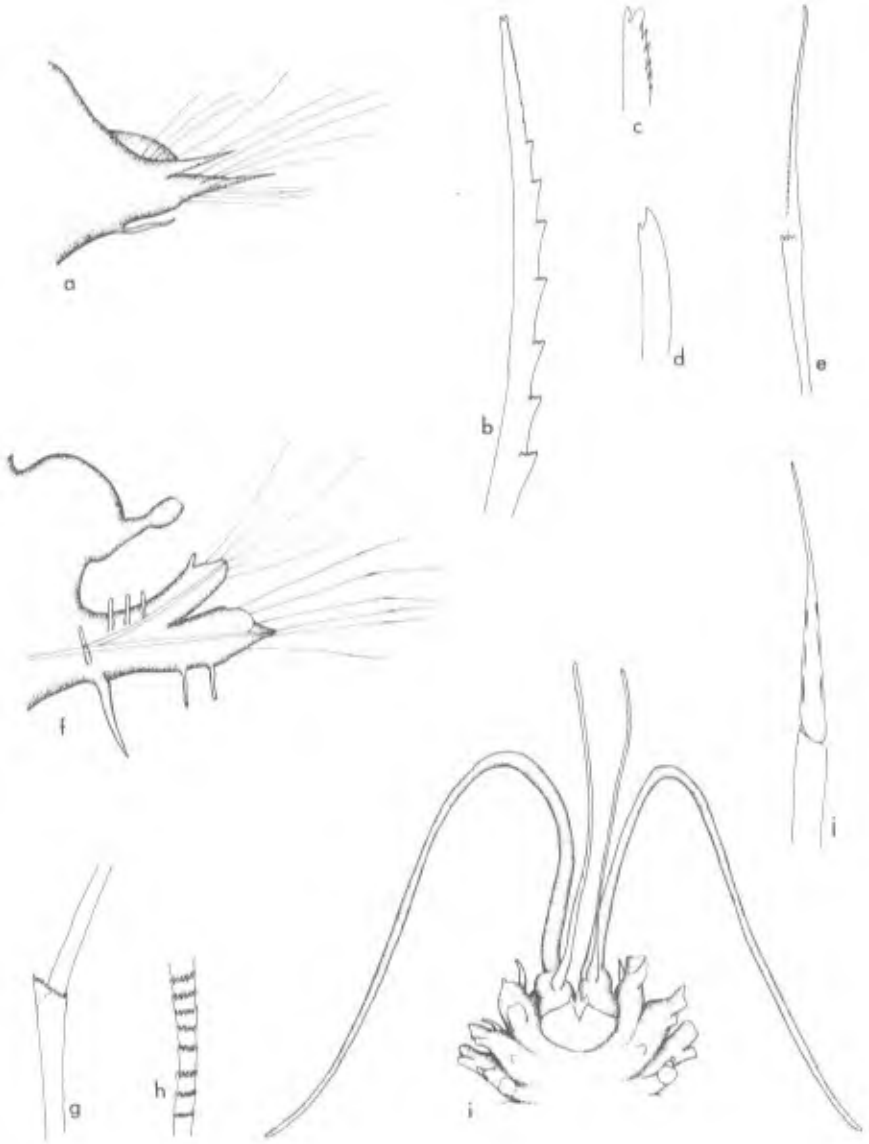


PLATE 2

Sthenolepis racemosa, new species

- a. Neuroseta, 635x
- b. Anterior end, 25x
- c. Posterior parapodium, posterior view, 32x
- d. Notoseta, 635x

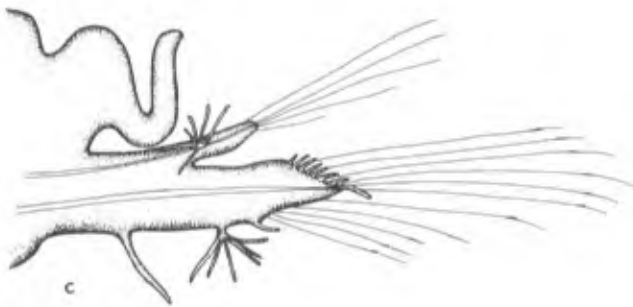
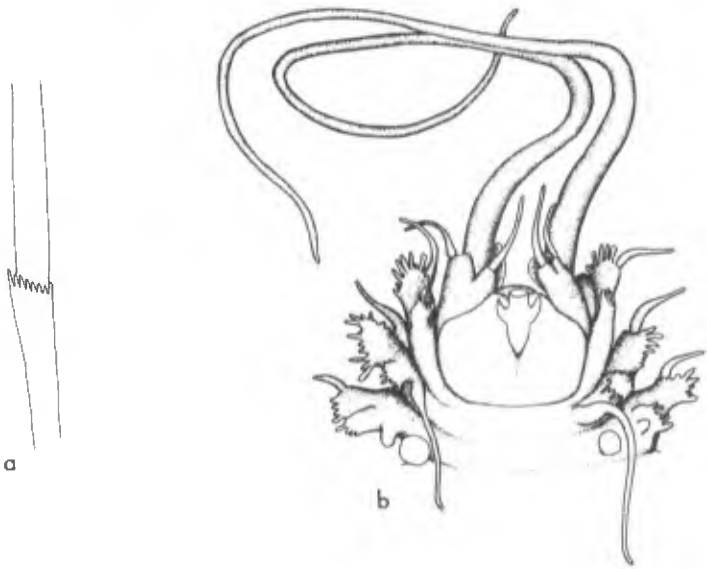


PLATE 3

Pseudeurythoe abyssalis, new species

- a. Anterior end, 42.5x
- b. Neuropodial aciculum, 570x
- c. Notoseta, lateral view, 570x
- d. Ventral neuroseta, 570x
- e. Median neuroseta, 570x
- f. Parapodium 8, anterior view, 50x

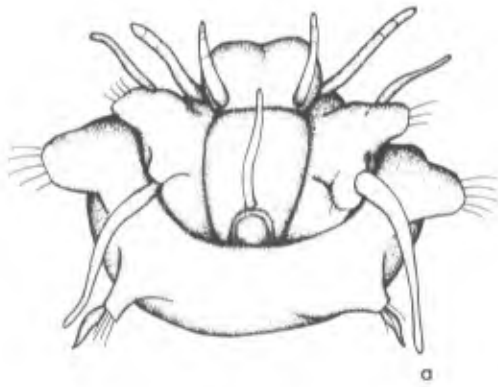


PLATE 4

Anaitides dubia, new species

- a. Median parapodium, anterior view, 50x
- b. Anterior end, dorsal view, 25x

Pirakia brunnea, new species

- c. Median parapodium, posterior view, 50x
- d. Median parapodium, anterior view, 50x

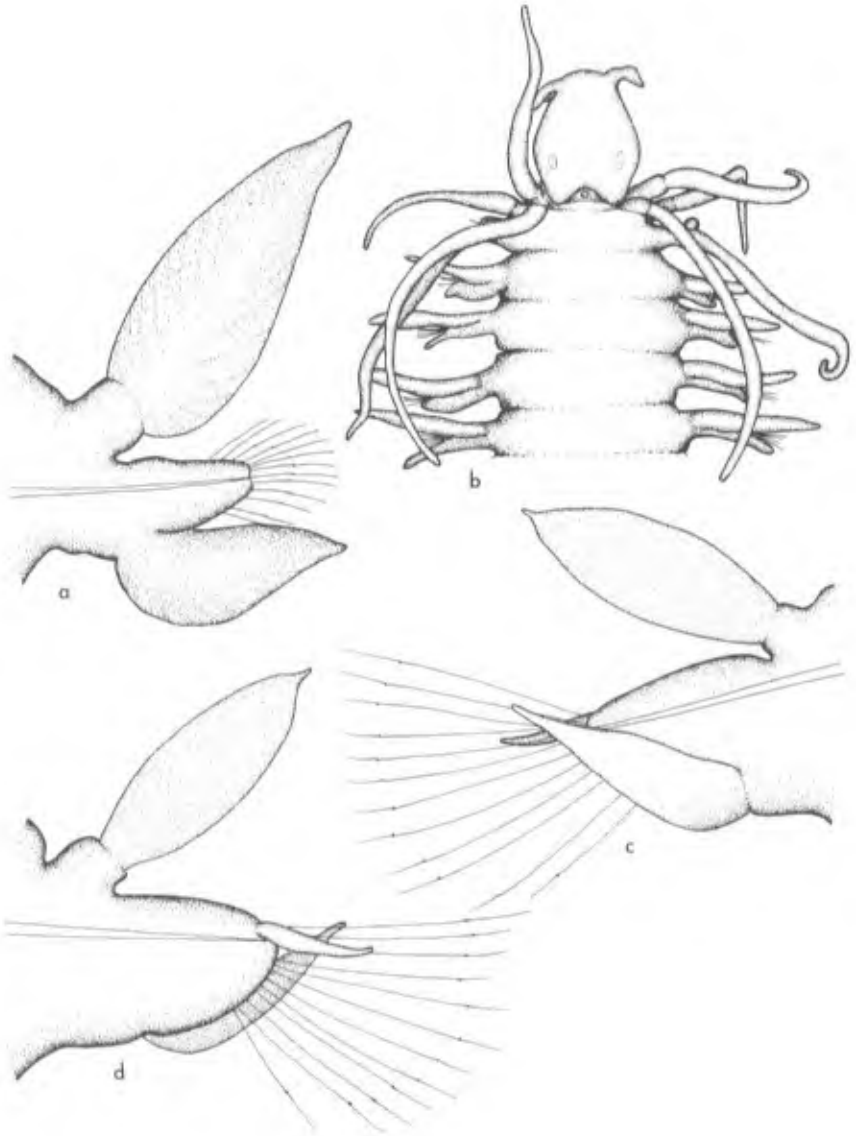
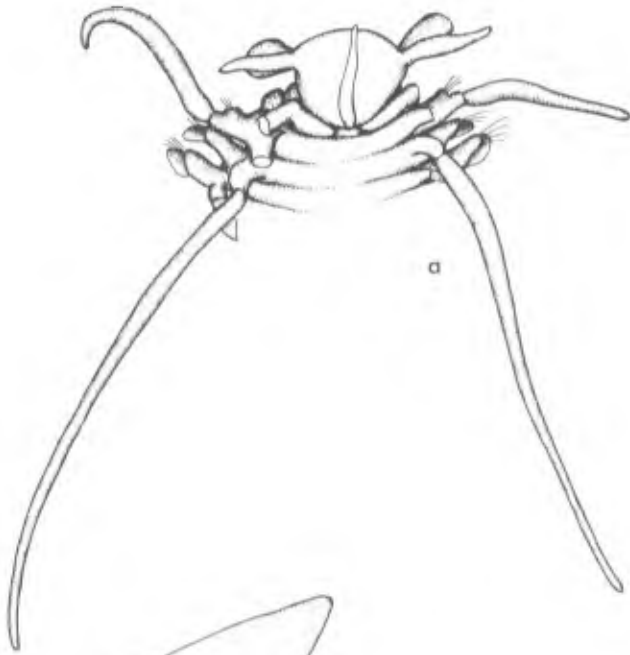


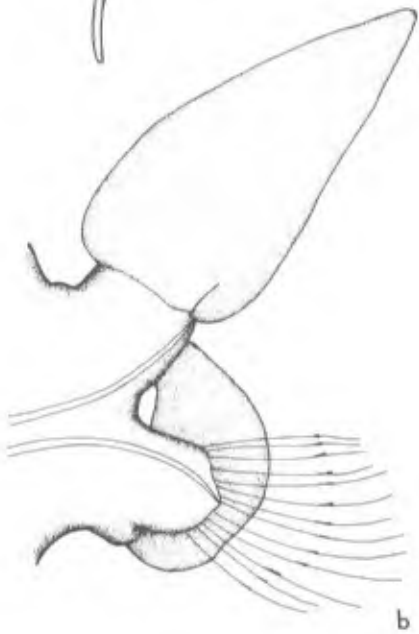
PLATE 5

Austrophyllum exsilium, new species

- a. Anterior end, 17.5x
- b. Median parapodium, anterior view, 34x
- c. Median seta, lateral view, 570x
- d. Median seta, anterior view, 570x



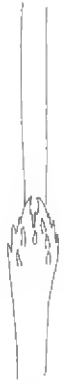
a



b



c



d

PLATE 6

Eulalia anoculata, new species

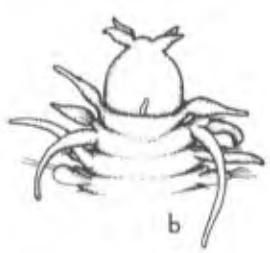
- a. Median seta, 635x
- b. Anterior end, dorsal view, 50x
- c. Median parapodium, anterior view, 285x

Eulalia mexicana, new species

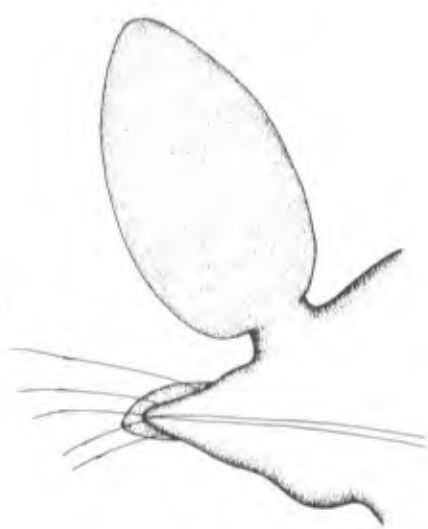
- d. Median seta, 570x
- e. Anterior end, dorsal view, 25x
- f. Median parapodium, posterior view, 58x



a



b



c



d



e



f

PLATE 7

Sigambra setosa, new species

- a. Anterior end, dorsal view, 25x
- b. Parapodium 16, anterior view, 58x
- c. Parapodium 46, anterior view, 58x

Ancistargis verrucosa, new species

- d. Anterior end, dorsal view, 50x
- e. Posterior parapodium, posterior view, 50x

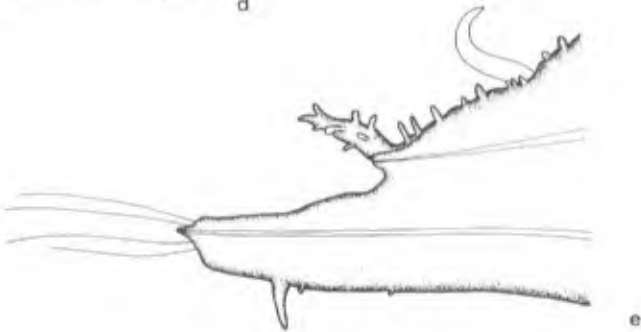
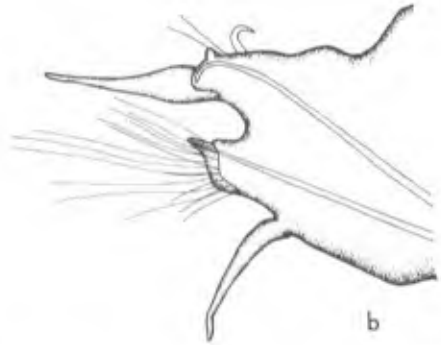
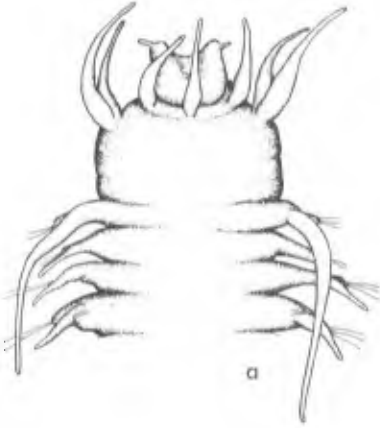


PLATE 8

Pilargis mirasetis, new species

- a. Median neuroseta, lateral view, 2700x
- b. Median neuroseta, frontal view, 2700x
- c. Anterior end, dorsal view, 34x

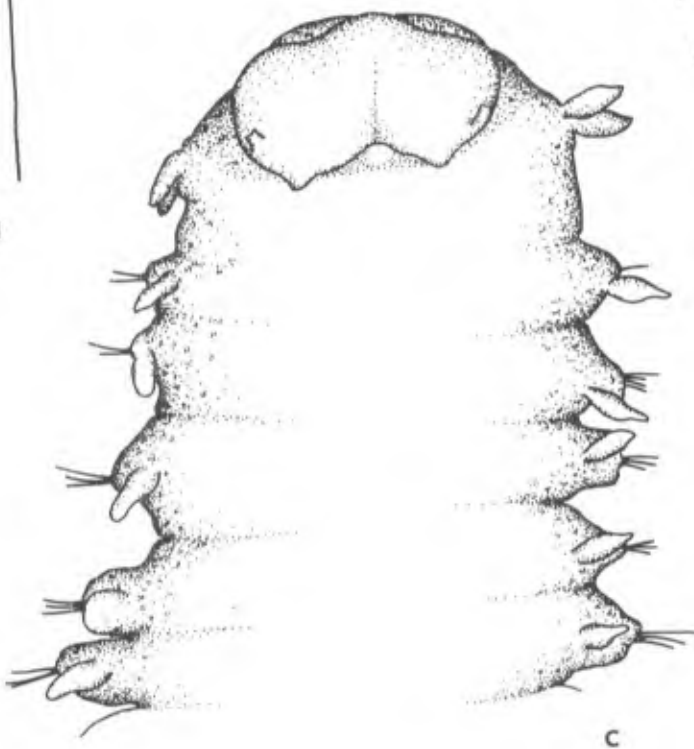


PLATE 9

Sigambra rugosa, new species

- a. Parapodium 20, anterior view, 58x
- b. Parapodium 4, anterior view, 58x
- c. Parapodium 60, anterior view, 58x
- d. Anterior end, dorsal view, 25x
- e. Parapodium 70, anterior view, 58x

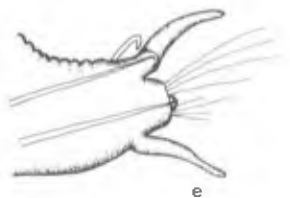
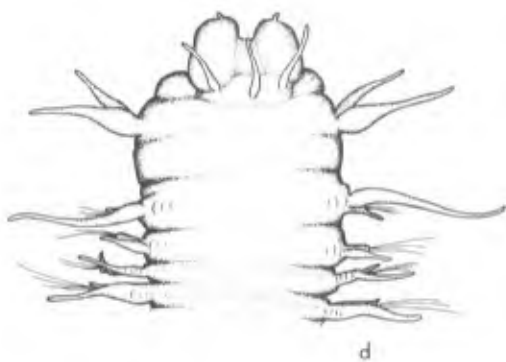
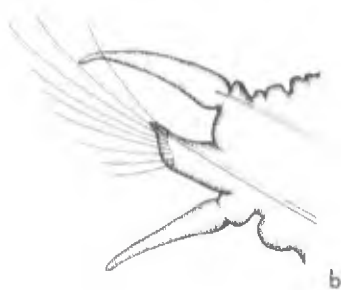
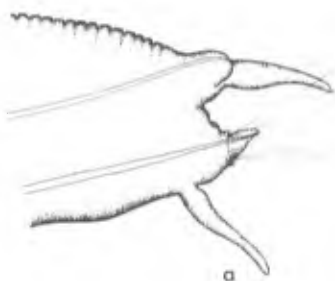


PLATE 10

Ceratonereis vermillionensis, new species

- a. Parapodium 2, anterior view, 212.5x
- b. Median neuroseta, 570x
- c. Anterior end, dorsal view, 25x
- d. Parapodium 20, anterior view, 212.5x
- e. Posterior parapodium, anterior view, 212.5x



PLATE 11

Neanthes mexicana, new species

- a. Parapodium 16, anterior view, 58x
- b. Median neuroseta, 570x
- c. Parapodium 2, anterior view, 212.5x
- d. Anterior end, dorsal view, 25x

Nereis angelensis, new species

- e. Median neuroseta, 635x
- f. Notopodial homogomph seta, posterior parapodium, 635x
- g. Parapodium 57, anterior view, 58x
- h. Parapodium 20, anterior view, 58x
- i. Anterior end, dorsal view, 10x
- j. Parapodium 2, anterior view, 58x

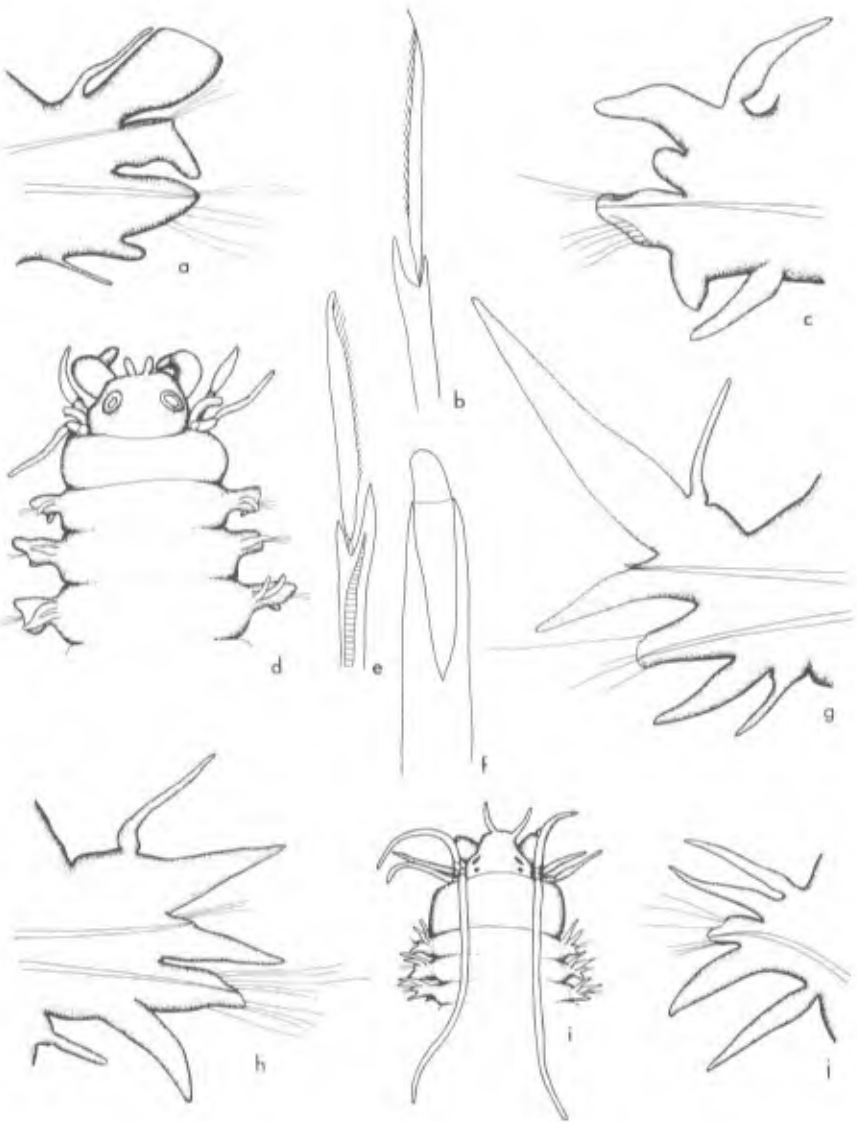


PLATE 12

Nereis anoculopsis, new species

- a. Parapodium 20, anterior view, 212.5x
- b. Anterior end, dorsal view, 25x
- c. Parapodium 2, anterior view, 212.5x
- d. Superior neuroseta, setiger 20, 635x
- e. Inferior neuroseta, setiger 20, 635x
- f. Homogomph notoseta, posterior setiger, 635x
- g. Parapodium 54, anterior view, 212.5x

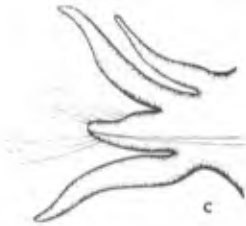
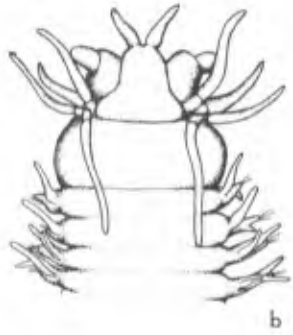
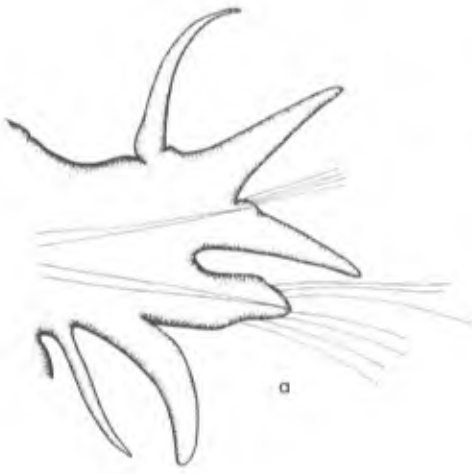


PLATE 13

Nereis fossae, new species

- a. Parapodium 20, anterior view, 20x
- b. Homogomph notoseta, posterior setiger, 456x
- c. Heterogomph spiniger, 508x
- d. Homogomph spiniger, 508x
- e. Heterogomph faleiger, 456x
- f. Anterior end, 8x
- g. Parapodium 175, anterior view, 8x
- h. Posterior end, dorsal view, 8x
- i. Parapodium 2, anterior view, 20x

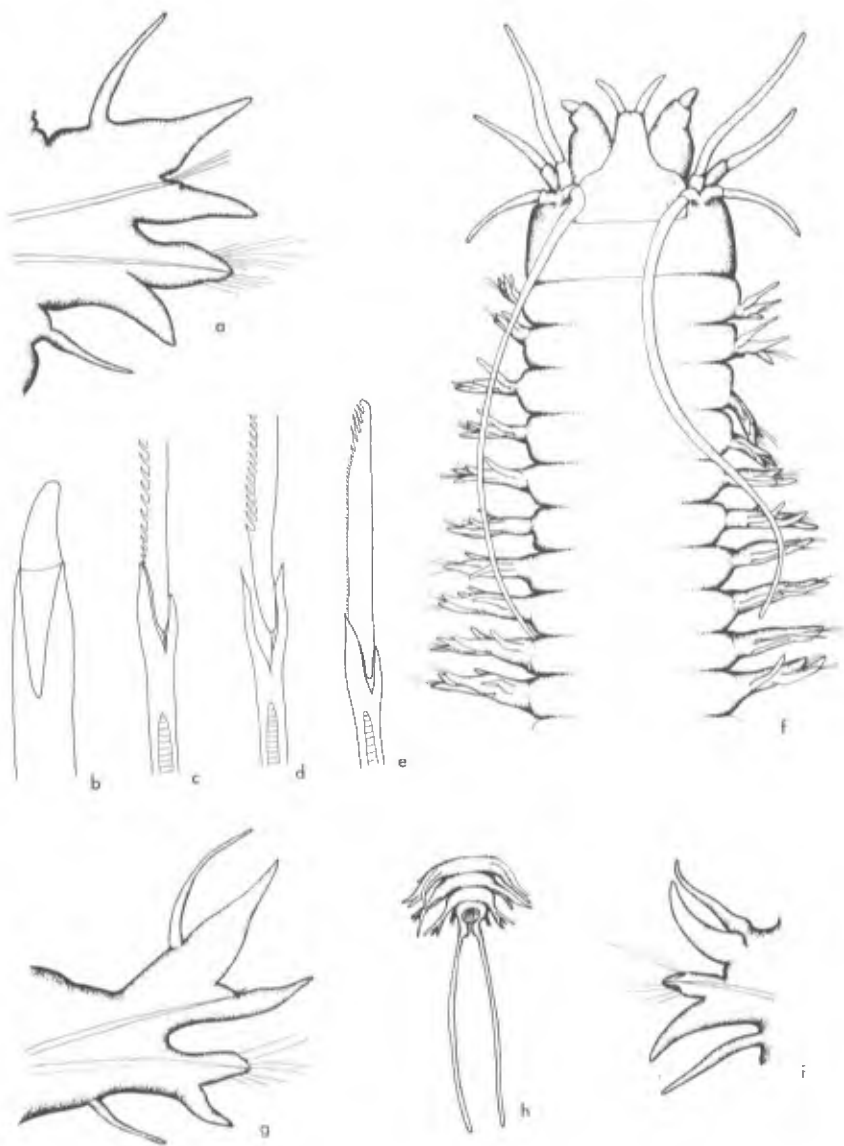


PLATE 14

Aglaophamus eugeniae, new species

- a. Anterior end, 50x
- b. Parapodium 18, anterior view, 25x
- c. Tip of aciculum, median parapodium, 420x
- d. Median preacicular seta, median portion, 635x
- e. Median postacicular seta, median portion, 635x

Aglaophamus fossae, new species

- f. Anterior end, dorsal view, 25x

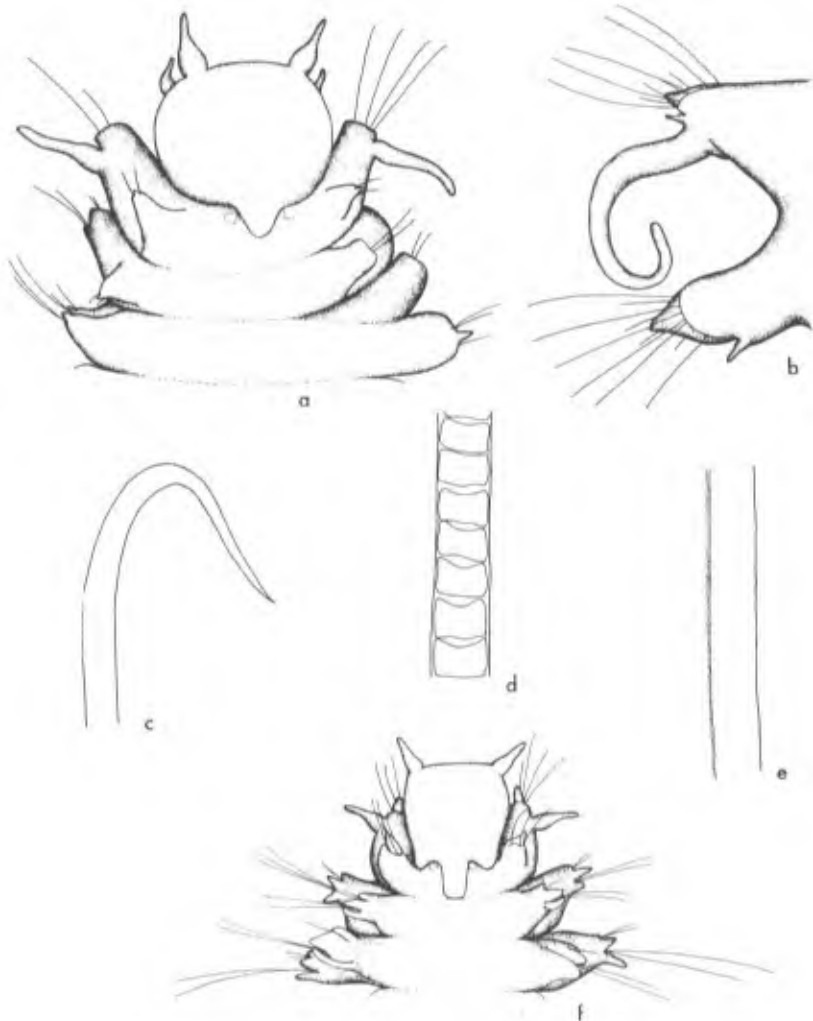


PLATE 15

Aglaophamus fossae, new species

- a. Parapodium 11, anterior view, 50x
- b. Superior preacicular neuroseta, median portion, 635x
- c. Median preacicular neuroseta, median portion, 635x
- d. Parapodium 11, posterior view, 50x
- e. Tip of aciculum, median setiger, 212.5x
- f. Median postacicular neuroseta, median portion, 635x
- g. Parapodium 28, posterior view, 50x
- h. Jaw, view of exposed portion, 50x
- i. Parapodium 28, anterior view, 50x

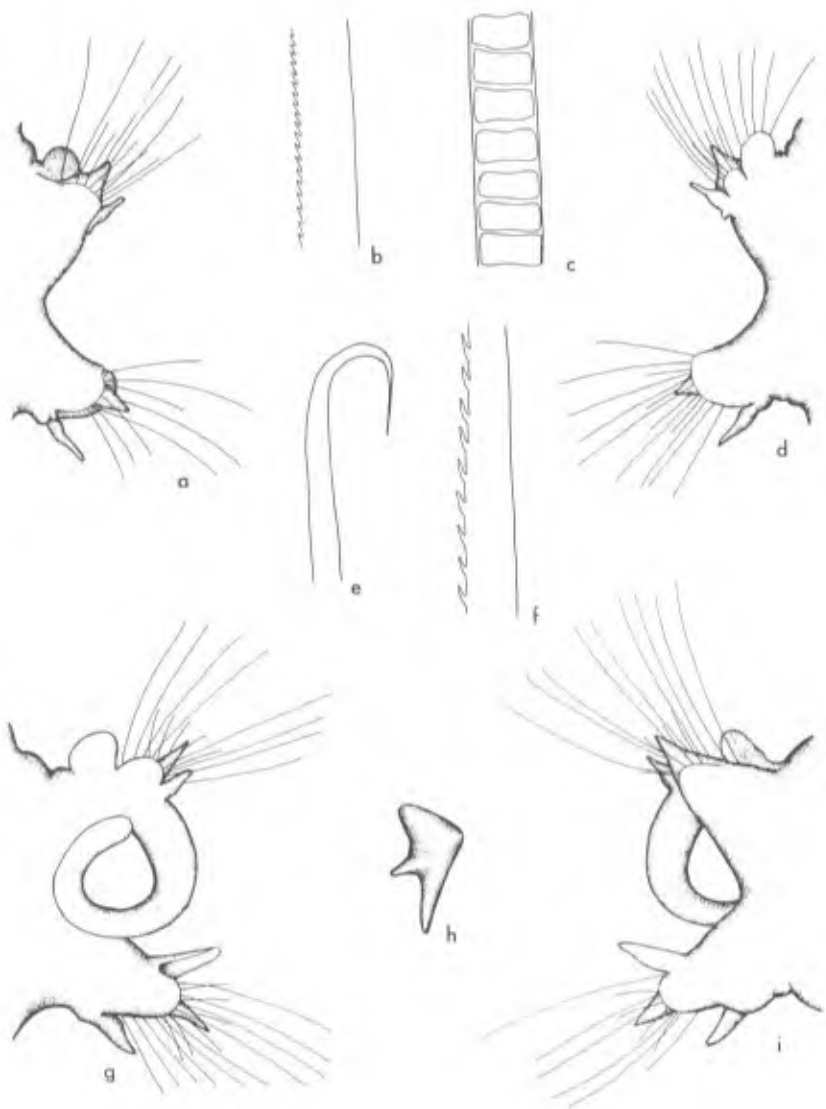


PLATE 16

Aglaophamus paucilamellata, new species

- a. Anterior end, dorsal view, 50x
- b. Median portion of preacicular seta, setiger 30, 635x
- c. Tip of aciculum, setiger 20, 212.5x
- d. Median portion of postacicular seta, setiger 30, 635x
- e. Parapodium 30, anterior view, 50x
- f. Parapodium 30, posterior view, 50x

Nephtys squamosa Ehlers, 1887

- g. Jaw, view of exposed portion, 50x

Aglaophamus surrufa, new species

- h. Median portion of postacicular seta, median setiger, 635x
- i. Tip of aciculum, setiger 28, 212.5x

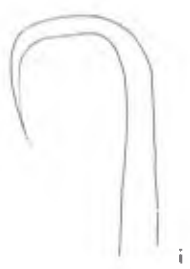
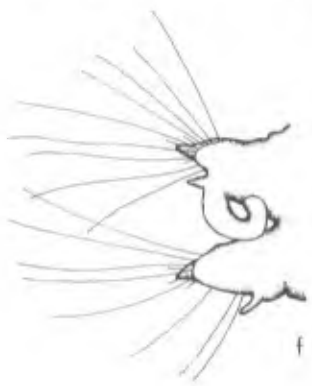
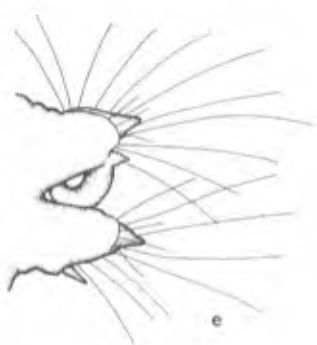
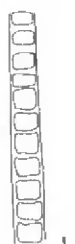
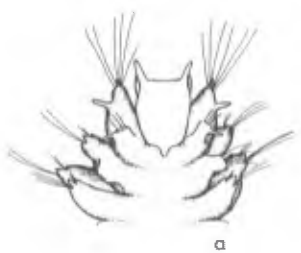


PLATE 17

Aglaophamus surrufa, new species

- a. Anterior end, dorsal view, 25x
- b. Parapodium 11, anterior view, setae omitted, 25x
- c. Parapodium 20, anterior view, 25x



PLATE 18

Clavodorum clavatum, new species

- a. Anterior end, dorsal view, 116x
- b. Ventral tubercle, 570x
- c. Macrotubercle, 570x

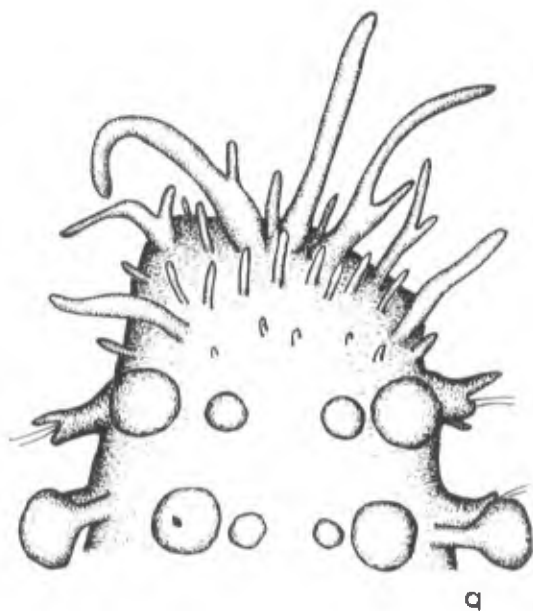


PLATE 19

Ephesiella brevicapitis (Moore, 1909)

- a. Posterior parapodium, anterior view, 570x
- b. Microtubercle, 570x
- c. Median composite seta, median parapodium, 1140x
- d. Recurved hook, first setiger, 1140x
- e. Macrotubercle, 570x
- f. Inferior composite seta, median parapodium, 1140x

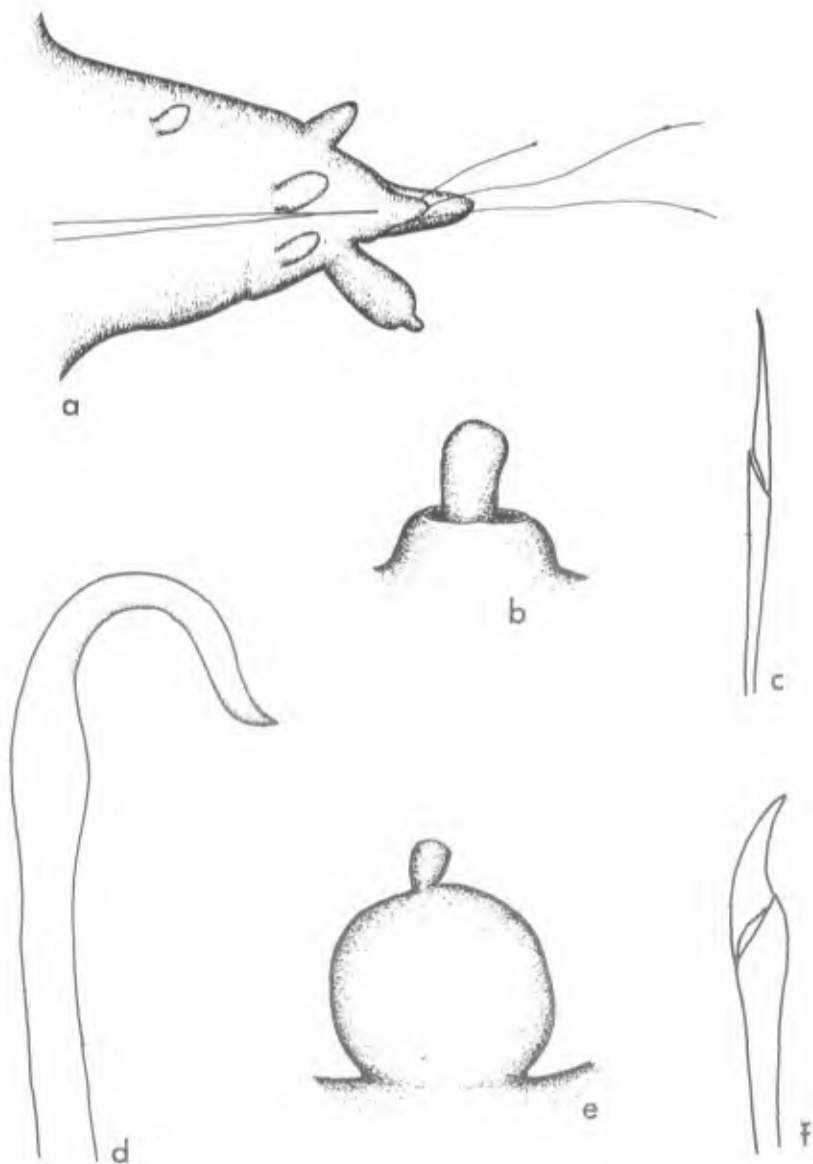


PLATE 20

Sphaerephesia longisetis, new genus, new species

- a. Anterior end, dorsal view, 425x
- b. Microtubercle, 840x
- c. Macrotubercle, 500x
- d. Composite seta, median parapodium, 2700x
- e. Median parapodium, posterior view, 260x

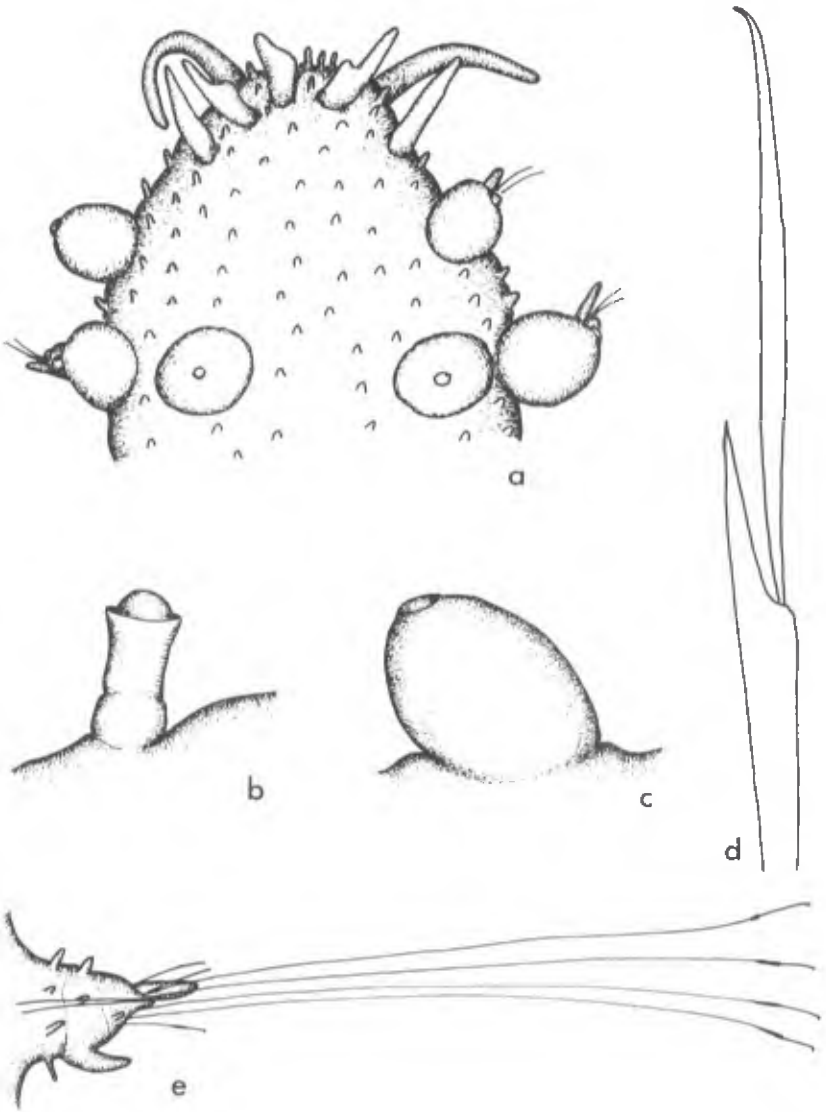


PLATE 21

Sphaerephesia similisetis, new genus, new species

- a. Anterior end, dorsal view, 100x
- b. Composite seta, median parapodium, 1270x
- c. Median parapodium, anterior view, 425x

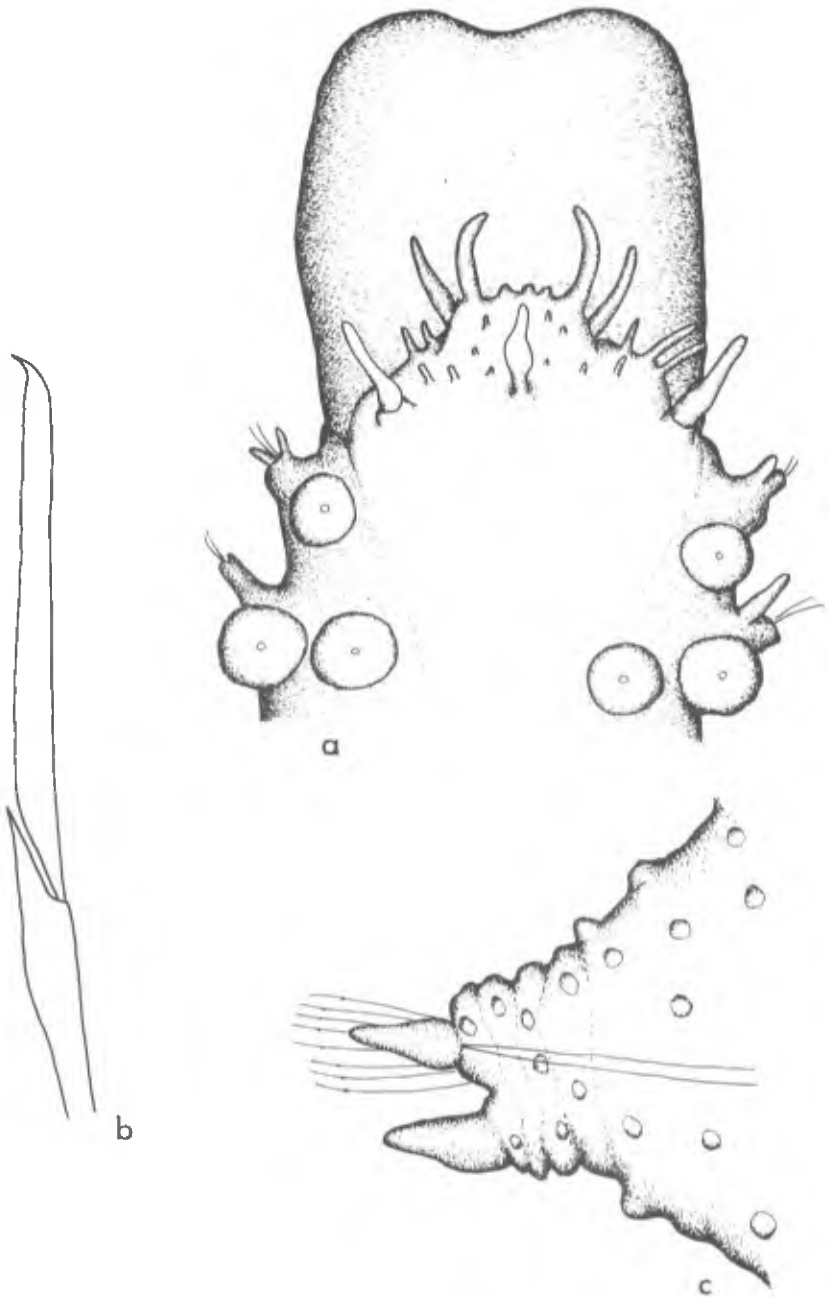


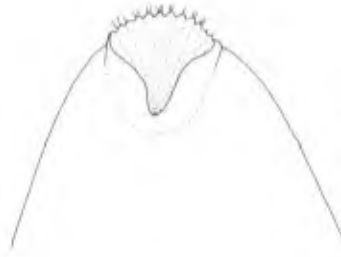
PLATE 22

Glycera profundi Chamberlin, 1919

- a. Everted tip of slender proboscideal organ, 1350x
- b. Tip of broad proboscideal organ, 635x
- c. Tip of slender proboscideal organ, 635x
- d. Tip of slender proboscideal organ, 635x
- e. Jaw and aileron, lateral view, 25x
- f. Tall proboscideal organ, from type of *Hemipodus mexicanus*, 420x
- g. Broad proboscideal organ, from type of *Hemipodus mexicanus*, 420x



a



b



c



d



e



f



g

PLATE 23

Bathyglycinde mexicana, new genus, new species

- a. Parapodium 28, anterior view, 58x
- b. Parapodium 15, anterior view, 212.5x
- c. Anterior end, dorsal view, 25x
- d. Median seta, setiger 15, 635x
- e. Lateral proboscideal organ, from area II, 212.5x
- f. Dorsal proboscideal organ from area II, 212.5x
- g. Proboscideal organs from area V, 212.5x

Bathyglycinde cedroensis, new genus, new species

- h. Proboscideal organ from area III, 212.5x
- i. Proboscideal organs from area V, 212.5x
- j. Dorsal proboscideal organ from area II, 212.5x
- k. Lateral proboscideal organ from area II, 212.5x
- l. Parapodium 15, anterior view, 212.5x
- m. Median seta, parapodium 15, 635x
- n. Parapodium 35, anterior view, 58x

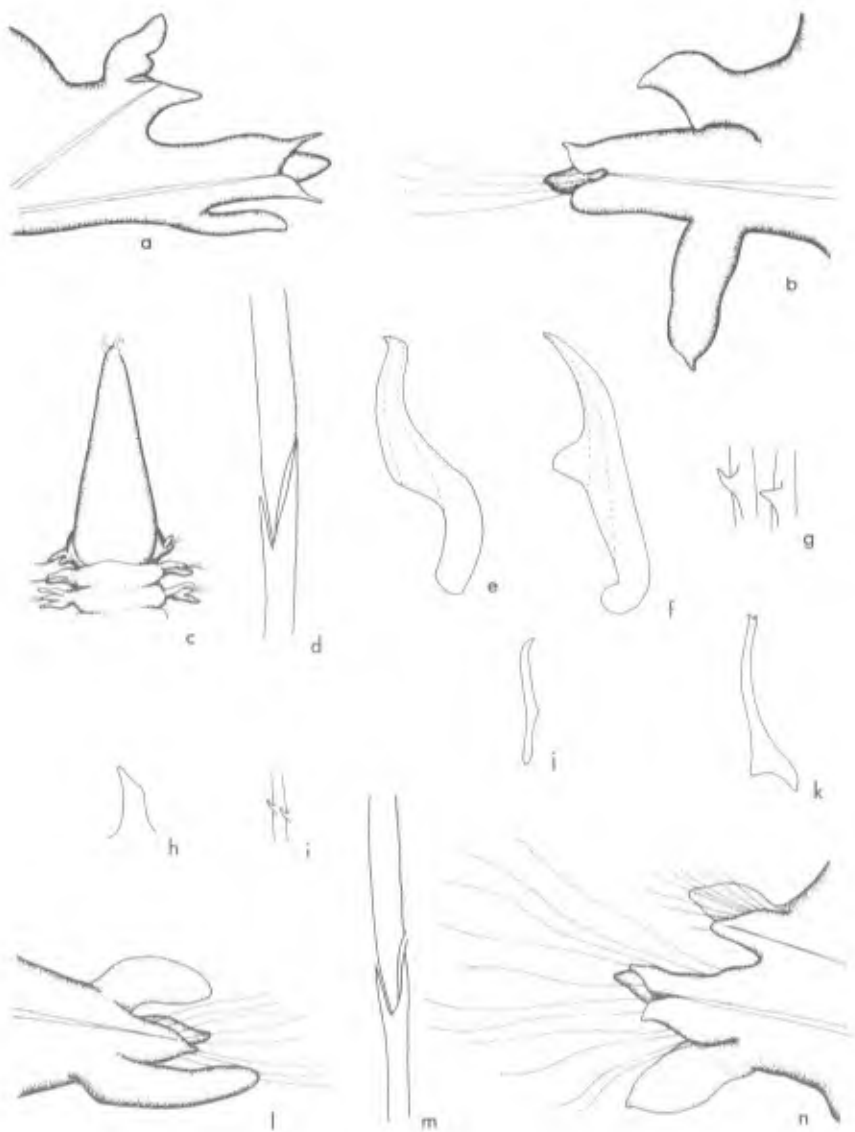


PLATE 24

Hyalinoecia leucacra Chamberlin, 1919

a. Anterior end, lateral view, 10x

Hyalinoecia tecton Chamberlin, 1919

b. Anterior end, dorsal view, 7x

c. Parapodium 1, anterior view, 10x

d. Parapodium 2, posterior view, 17.5x

e. Parapodium 2, anterior view, 17.5x

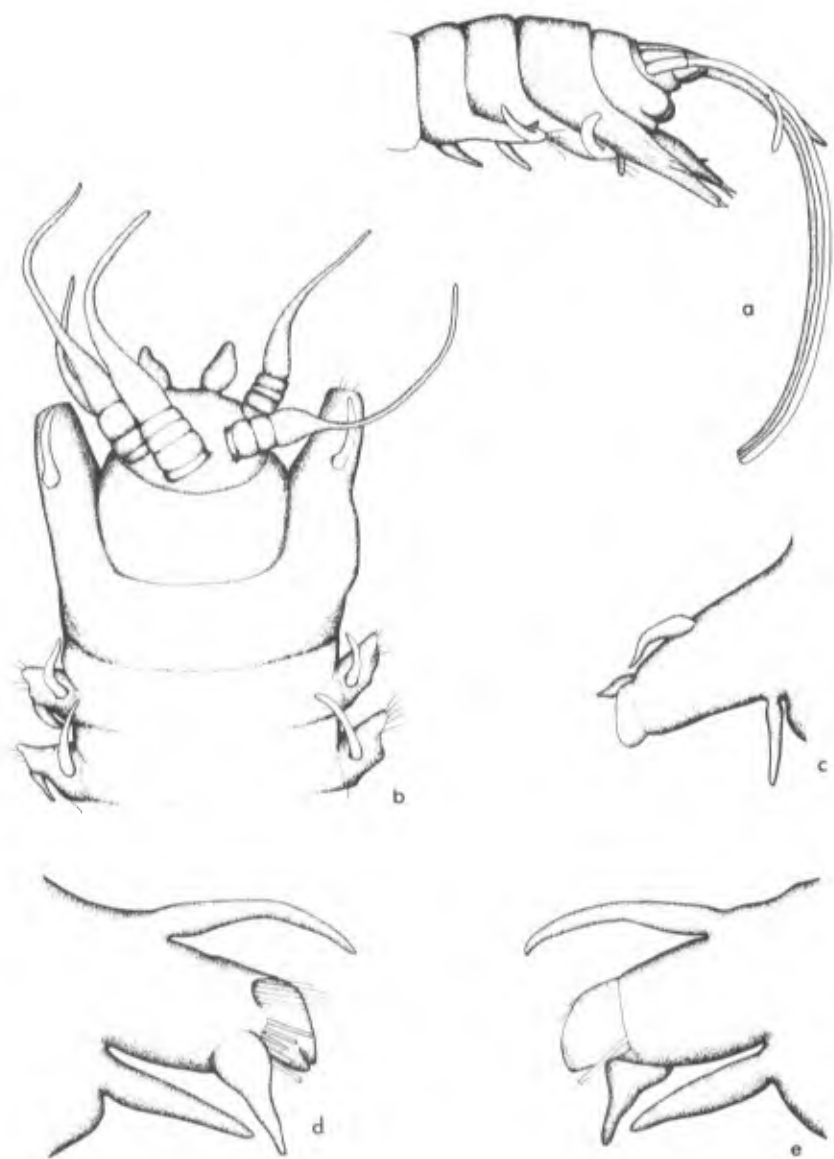


PLATE 25

Nothria vibex, new species

- a. Composite hook, second setiger, 570x
- b. Composite hook, second setiger, frontal view, 570x
- c. Subacicular hook, setiger 15, 420x
- d. Parapodium 2, anterior view, 50x
- e. Anterior end, 17.5x
- f. Pectinate seta, posterior setiger, 635x

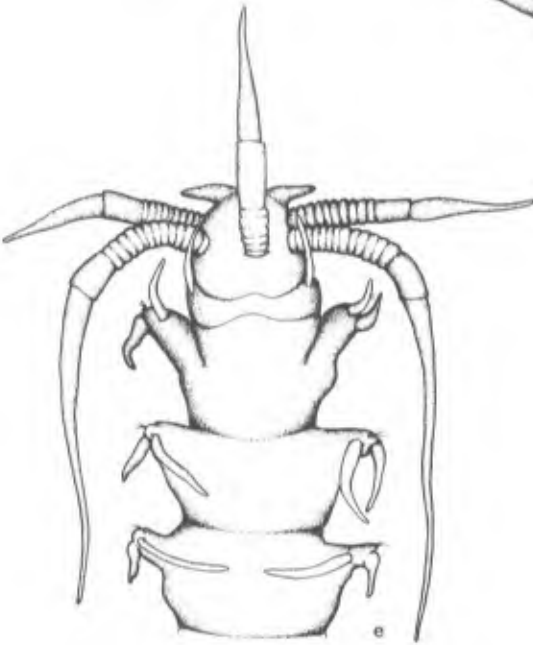
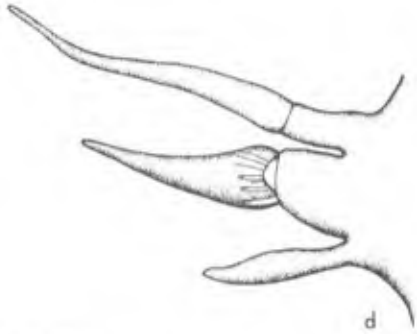


PLATE 26

- Onuphis profundus* Fauchald, 1969
a. First parapodium, anterior view, 25x
- Onuphis vexillaria* Moore, 1911
b. Large hook, setiger 6, 570x
- Onuphis nebulosa* Moore, 1911
c. Parapodium 2, anterior view, 50x
d. Superior hook, setiger 3, 570x
e. Second hook, setiger 3, 570x
f. Third hook, setiger 3, 570x
g. Inferior hook, setiger 3, 570x
h. Large hook, setiger 8, 570x

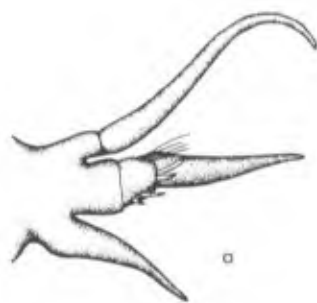


PLATE 27

Paranorthia fissurata, new species

- a. Anterior end, dorsal view, 10x
- b. Pectinate seta, posterior setiger, 635x
- c. Superior pectinate seta, posterior setiger, 635x
- d. Tip of aciculum, setiger 45, 285x
- e. Maxillae, 7.5x
- f. Dorsal geniculate seta, 285x
- g. Anterior end, ventral view, 10x
- h. Subacicular hook, setiger 45, 285x
- i. Pseudocomposite hook, setiger 3, 625x



PLATE 28

Paranorthia fissurata, new species

- a. Parapodium 1, anterior view, 25x
- b. Parapodium 1, posterior view, 25x
- c. Parapodium 2, anterior view, 25x
- d. Parapodium 2, posterior view, 25x
- e. Parapodium 3, anterior view, 25x
- f. Parapodium 3, posterior view, 25x
- g. Posterior parapodium, posterior view, 25x

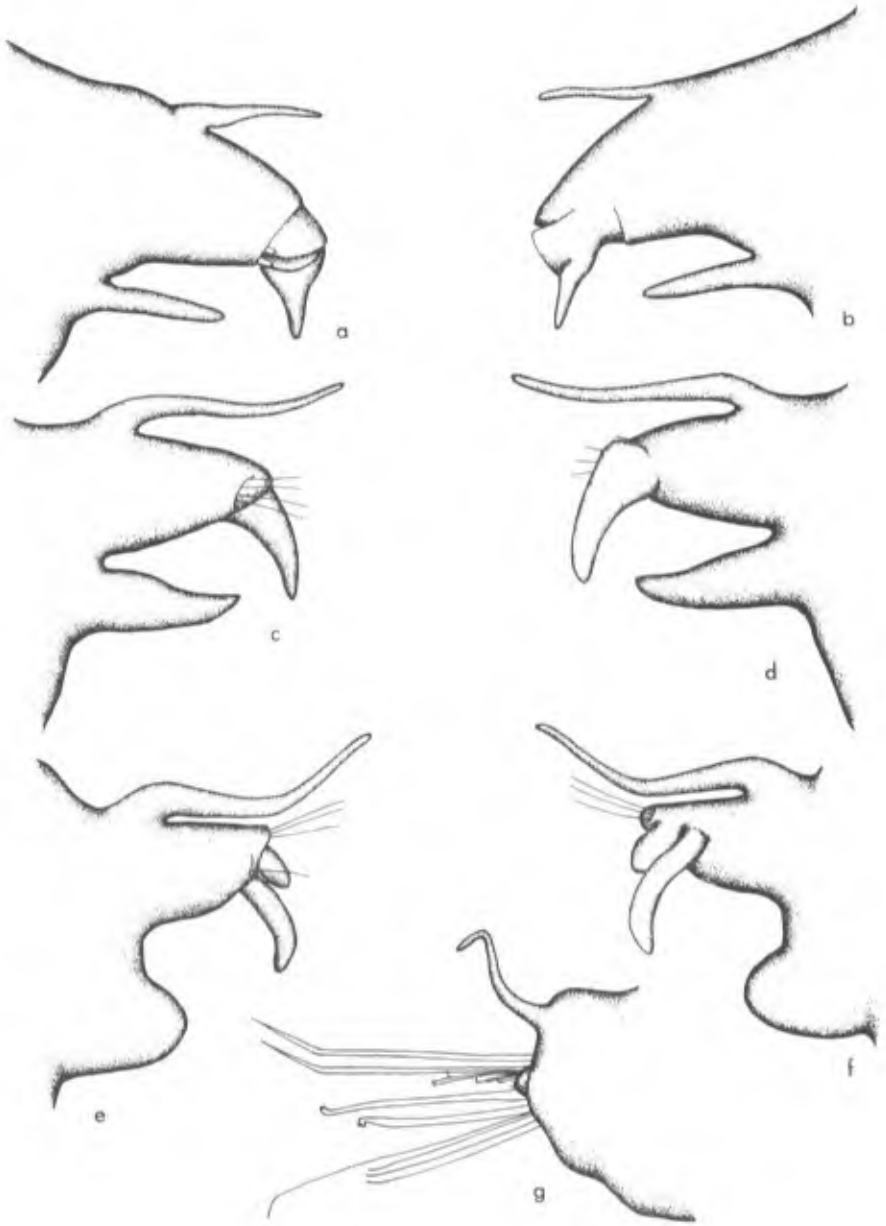


PLATE 29

Lumbrineris eugeniae Fauchald, 1970

- a. Anterior end, dorsal view, 25x
- b. Parapodium 2, anterior view, 212.5x

Ninoe foliosa, new species

- c. Simple hook, posterior setiger, 635x
- d. Posterior parapodium, anterior view, 50x
- e. Tip of aciculum, 570x
- f. Parapodium 2, posterior view, 50x
- g. Parapodium 2, anterior view, 50x

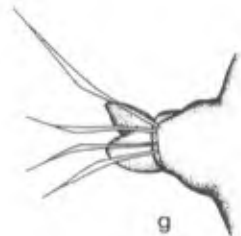
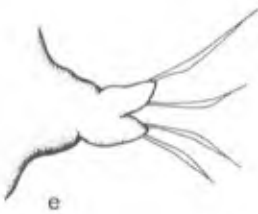
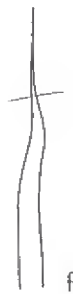
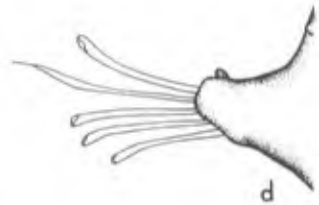
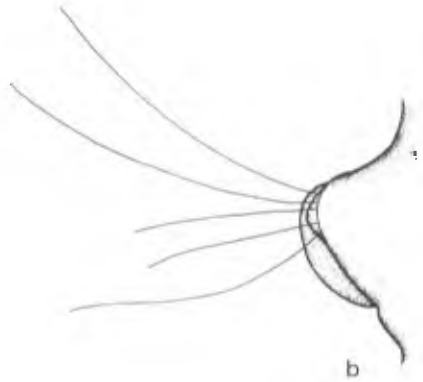
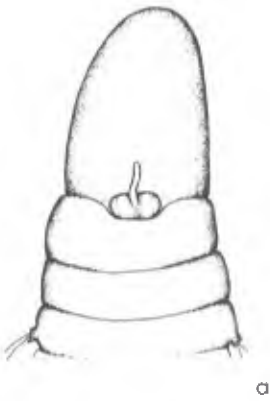
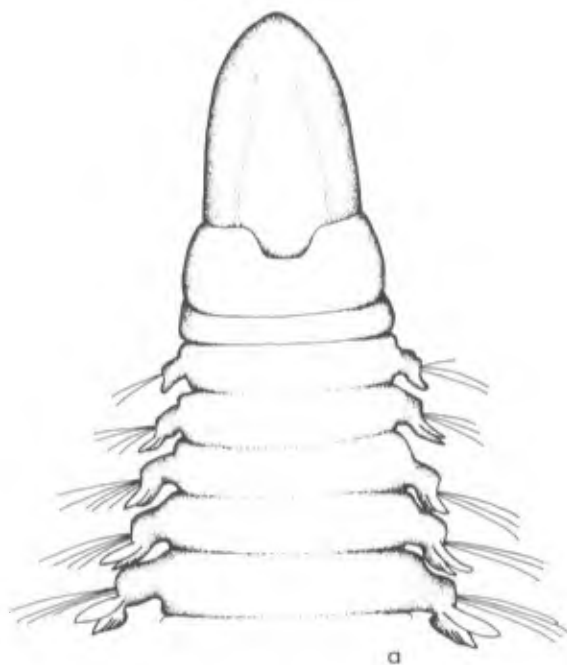


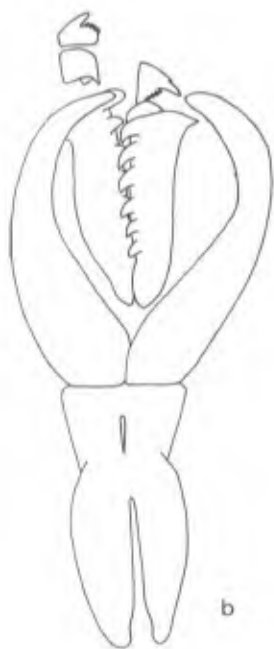
PLATE 30

Ninoe foliosa, new species

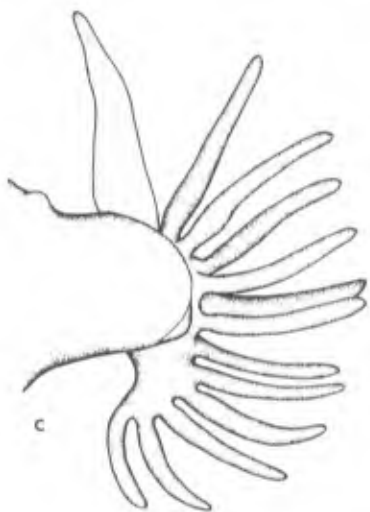
- a. Anterior end, dorsal view, 25x
- b. Maxillae, 58x
- c. Parapodium 19, anterior view, setae omitted, 50x
- d. Parapodium 19, posterior view, 50x



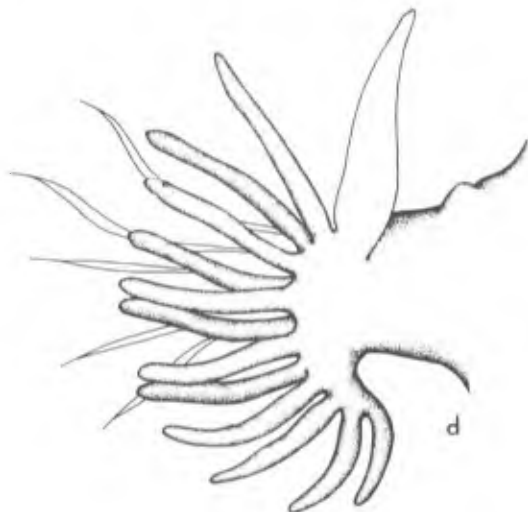
a



b



c



d

PLATE 31

Ninoe fuscoides, new species

- a. Simple hook, setiger 47, 1350x
- b. Anterior end, dorsal view, 25x
- e. Parapodium 10, posterior view, setae omitted, 58x
- d. Simple hook, setiger 10, 1350x
- e. Parapodium 10, anterior view, 58x
- f. Anterior end, ventral view, 25x

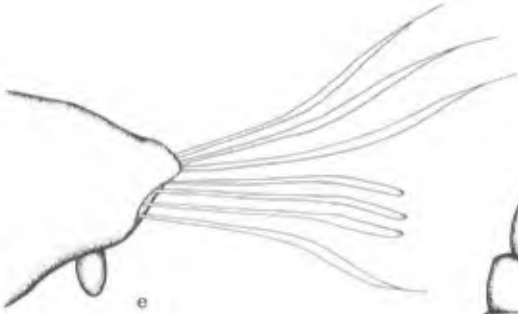
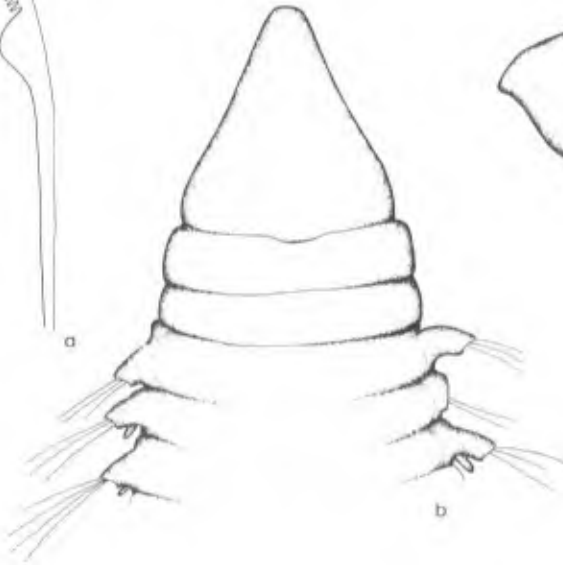
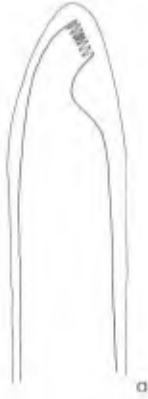


PLATE 32

Ninoe longibranchia, new species

- a. Anterior end, dorsal view, 25x
- b. Parapodium 13, posterior view, 100x
- c. Anterior end, ventral view, 25x
- d. Tip of aciculum, 635x
- e. Simple hook, posterior setiger, 635x
- f. Simple hook, 13th setiger, 635x
- g. Maxillae, 212.5x

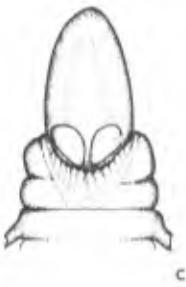
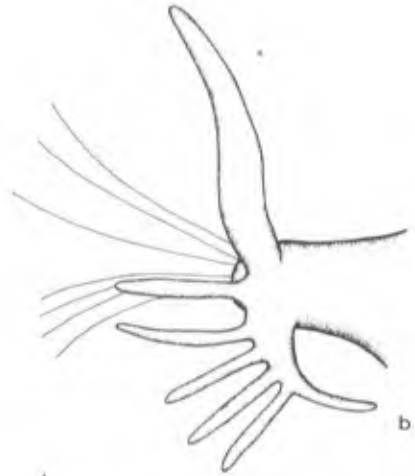
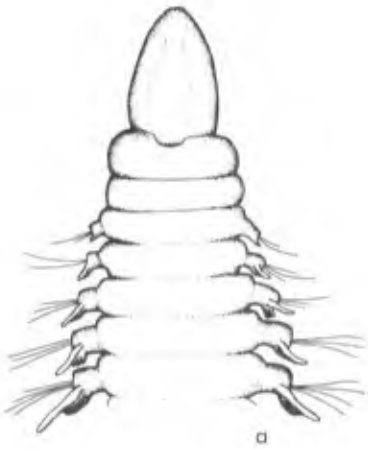


PLATE 33

Califa mexicana, new species

- a. Parapodium 8, posterior view, 58x
- b. Parapodium 2, anterior view, 58x
- c. Precicular seta, second setiger, 420x
- d. Postacicular seta, second setiger, 285x
- e. Anterior abdominal parapodium, posterior view, 58x

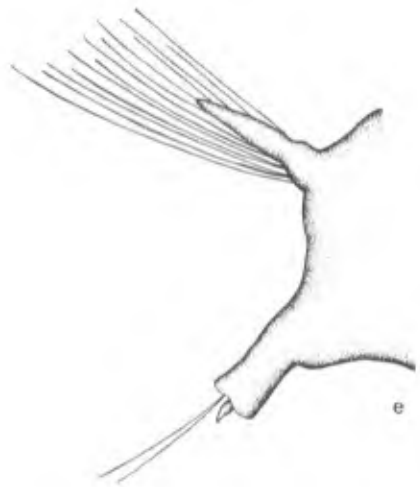
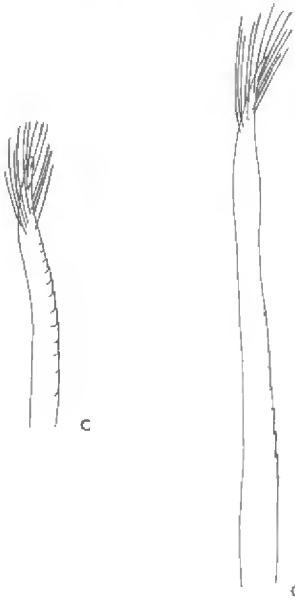
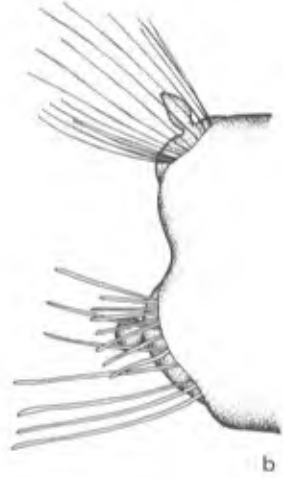


PLATE 34

Haploscoloplos kerguelensis (McIntosh, 1885)

- a. Anterior abdominal parapodium, anterior view, 112.5x
- b. Second parapodium, anterior view, 130x

Haploscoloplos mexicanus, new species

- c. Parapodium 8, posterior view, 58x
- d. Posterior abdominal parapodium, posterior view, 58x