

1. *Pyrrosia schimperiana*



PLATE 1

Pyrrosia schimperiana. Drawn from plants in the Kirstenbosch cliff-plant collection (material from a sandstone cliff face at Blyderivierspoort, *Van Jaarsveld 17246*, collected 28 February 2002). Artist: Jeanette Loedolff.

2. *Cyrtanthus falcatus*



PLATE 2

Cyrtanthus falcatus. Drawn from plants in the Kirstenbosch cliff-plant collection (material from Mzinga Waterfall, KwaZulu-Natal Drakensberg, collected 11 October 2003, *Van Jaarsveld 18266*). Artist: Vicki Thomas.

3. *Cyrtanthus flammorus*



PLATE 3

Cyrtanthus flammorus. Drawn from plants in the Kirstenbosch cliff-plant collection (material from a ledge at the Kouga Dam, type plant!). Artist: Lisa Strachan.

5. *Cyrtanthus herrei*



PLATE 5

Cyrtanthus herrei. Painted from plants in the Kirstenbosch cliff-plant collection (material from a ledge on Kuamsibberg, Hunsberg, southern Namibia, collected 7 July 2007 by Paul Ems). Artist: Vicki Thomas.

7. *Cyrtanthus junodii*



PLATE 7

Cyrtanthus junodii. Drawn from a plant in flower in the Kirstenbosch cliff-plant collection (material from Wolkberg, Limpopo Province, collected 21 July 1999, *Van Jaarsveld 16231*). Artist: Vicki Thomas.

8. *Cyrtanthus labiatus*



PLATE 8

Cyrtanthus labiatus. Drawn from plants in the Kirstenbosch cliff-plant collection (material from a ledge at the Kouga Dam, Eastern Cape, collected 18 September 1990, *Van Jaarsveld 11070*). Artist: Lisa Strachan.

12. *Haemanthus paucifolius*



PLATE 12

Haemanthus paucifolius. Plant in flower and in fruit. Note the vegetative spread of young bulbs at the base of the plant (from Kaaprivierspoort, Barberton, *Van Jaarsveld 19371*). Artist: Vicki Thomas.

13. *Aloe arborescens* subsp. *mzimnyati*



PLATE 13

Aloe arborescens subsp. *mzimnyati*. Painted from a plant on a scree below a cliff face at Mzimnyati River, KwaZulu-Natal (*Van Jaarsveld 18211*). Artist: Lisa Strachan.

15. *Aloe challisii*



PLATE 15

Aloe challisii. Drawn from a plant from Steenkampsberg, Mpumalanga (collected by Chris Challis). Artist: Lisa Strachan.

16. *Aloe corallina*

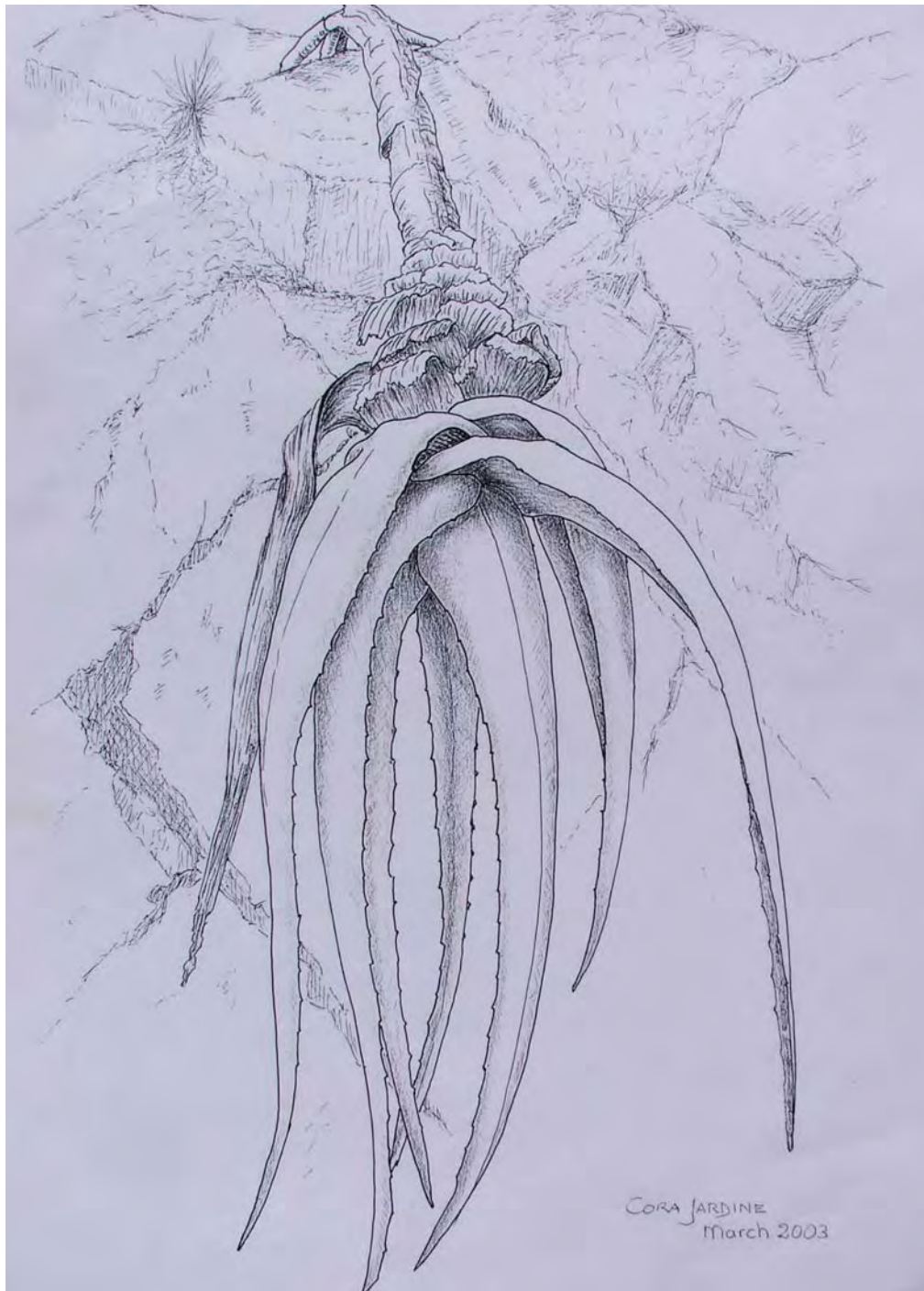


PLATE 16

Aloe corallina. Sketched from digital images of the original site (Otjiboronbongo, Kaakoveld, northern Namibia, *Van Jaarsveld 16482*). Artist. Cora Jardine.

17. *Aloe dabenorisana*



PLATE 17

Aloe dabenorisana. Painted from the type plant (Dabenorisberg, Bushmanland, Northern Cape). Artist: Ellaphie Ward-Hilhorst.



20. *Aloe hardyi*



PLATE 20

Aloe hardyi. Shown in habitat at Kromellenboog, Limpopo Province (*Van Jaarsveld 16242*). Artist: Eric Judd.

22. *Aloe meyeri*



PLATE 22

Aloe meyeri. Painted from the type plant (Rosyntjieberg, Richtersveld). Artist: Ellaphie Ward-Hilhorst.



24. *Aloe nubigena*



PLATE 24

Aloe nubigena. Depicted in its habitat near Angle Station, Barberton, Mpumalanga (from a plant collected by Phillip Nel). Artist: Eric Judd.

25. *Aloe omavandae*



PLATE 25

Aloe omavandae. Shown in habitat on a sandstone cliff on the Baynes Mountains at Omavanda (painted from the type plant). Artist: Gillian Condy.



26. *Aloe pavelkae*

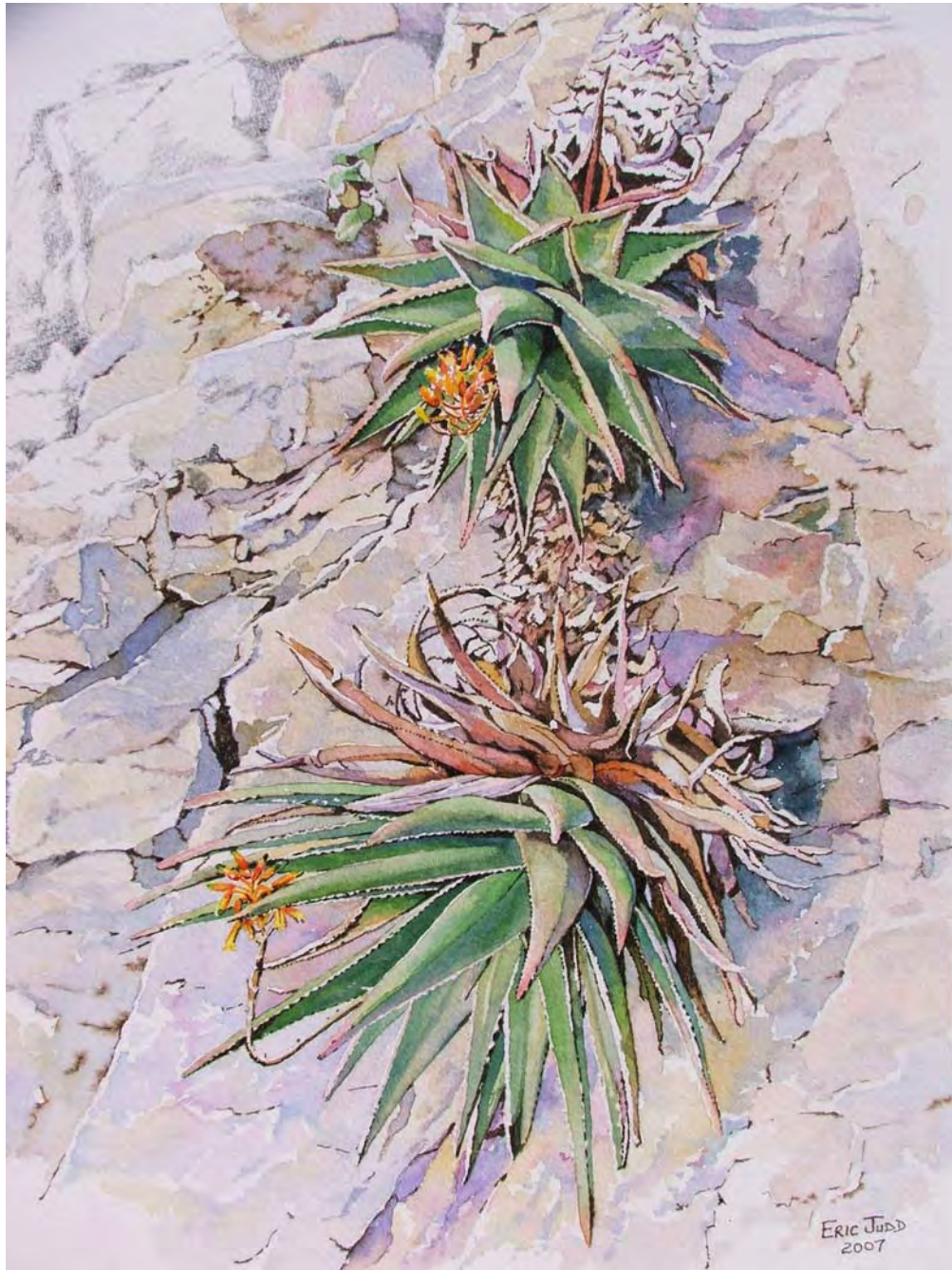


PLATE 26

Aloe pavelkae. Depicted in habitat in the Ai-Ais Richtersveld Transfrontier National Park (Kuamsibberg, Hunsberg, southern Namibia, *Van Jaarsveld 19919*). Artist: Eric Judd.



26a. *Aloe petrophila*



PLATE 26a

Aloe petrophila. Shown in habitat at Wylties Poort, Soutpansberg, Limpopo Province (collected by Ernst van Jaarsveld). Artist: Eric Judd.



27. *Aloe pictifolia*



PLATE 27

Aloe pictifolia. Depicted in habitat at the Kouga Dam, Eastern Cape (*Van Jaarsveld 11046*)
Artist: Eric Judd.

28. *Aloe reynoldsii*



PLATE 28

Aloe reynoldsii. Painted from a plant at the Mbashe River, Eastern Cape (*Van Jaarsveld 16907*). Artist: Eric Judd.

31. *Bulbine cremnophila*



PLATE 31

Bulbine cremnophila. Drawn from a plant in Gertsmitzkloof, Baviaanskloof, Eastern Cape (Van Jaarsveld 7238). Artist: Vicki Thomas.

32a. *Bulbine latifolia* (Great Fish River, cliff form)



PLATE 32a

Bulbine latifolia. Depicted on cliffs at the Great Fish River, north of Grahamstown, Eastern Cape (Van Jaarsveld 16813). Artist: Vicki Thomas.

32. *Bulbine latifolia* var. *curvata*



PLATE 32

Bulbine latifolia var. *curvata*. Drawn from a plant at the Kouga Dam, Eastern Cape (Van Jaarsveld 13806). Artist: Vicki Thomas.

33. *Bulbine meiringii*



PLATE 33

Bulbine meiringii. Drawn from a plant from Meiringspoort, Western Cape (Van Jaarsveld, Vlok & Nanni 12762). Artist: Vicki Thomas.

35. *Bulbine pendens*



PLATE 35

Bulbine pendens. Depicted in the Skaaprivierspoort, Northern Cape (Van Jaarsveld, Harrower, Nicolson & Xaba 12762). Artist: Vicki Thomas.

36. *Bulbine ramosa*



PLATE 36

Bulbine ramosa. Shown in habitat at Badspoort south of Calitzdorp, Western Cape (Van Jaarsveld 16120). Artist: Vicki Thomas.

39. *Bulbine suurbergensis*



PLATE 39

Bulbine suurbergensis. Depicted in its habitat in the Suurberg, Eastern Cape (Van Jaarsveld 19228). Artist: Vicki Thomas.

40. *Bulbine thomasiae*



PLATE 40

Bulbine thomasiae. Depicted as it grows at Collywobbles, Eastern Cape (Van Jaarsveld 16850). Artist: Vicki Thomas.

41. *Gasteria batesiana* var. *batesiana*



PLATE 41

Gasteria batesiana var. *batesiana*. Drawn from plants in the Kirstenbosch cliff-plant collection. Artist: Ellaphie Ward-Hilhorst.

42. *Gasteria batesiana* var. *dolomitica*



PLATE 42

Gasteria batesiana var. *dolomitica*. Drawn from plants in the Kirstenbosch cliff-plant collection (material from Penge, Olifants River, Limpopo Province, *Van Jaarsveld & Hankey 15081*). Artist: Jeanette Loedolff.

43. *Gasteria croucheri* subsp. *pendulifolia*



PLATE 43

Gasteria croucheri subsp. *pendulifolia*. Painted from plants at Shongweni Dam, KwaZulu-Natal. Artist: Ellaphie Ward-Hilhorst.



43a. *Gasteria croucheri* subsp. *pendulifolia*



PLATE 43a

Gasteria croucheri subsp. *pendulifolia*. Depicted in cultivation at Kirstenbosch (gathered at Mamba Valley, Umgeni River, KwaZulu-Natal, *Van Jaarsveld, Baijnath & Heigeldorf* 9838). Artist: Tamlin Blake.

44. *Gasteria doreeniae*



PLATE 44

Gasteria doreeniae. Painted from material collected by Doreen Court from Swartwaterspoort, Eastern Cape. Artist: Ellaphie Ward-Hilhorst.

46. *Gasteria glomerata*



PLATE 46

Gasteria glomerata. Shown in its habitat at the Kouga Dam, Eastern Cape (Van Jaarsveld & Sardien 11054). Artist: Jeanette Loedolff.

47. *Gasteria pillansii* var. *ernesti-ruschii*



PLATE 47

Gasteria pillansii var. *ernesti-ruschii*. Painted from a plant from southern Namibia. Artist: Ellaphie Ward-Hilhorst.

48. *Gasteria rawlinsonii*



PLATE 48

Gasteria rawlinsonii. Drawn from a plant from Gertsmit-skloof, Baviaanskloof, Eastern Cape (*Van Jaarsveld 7215*). Artist: Jeanette Loedolff.

49. *Gasteria tukhelensis*

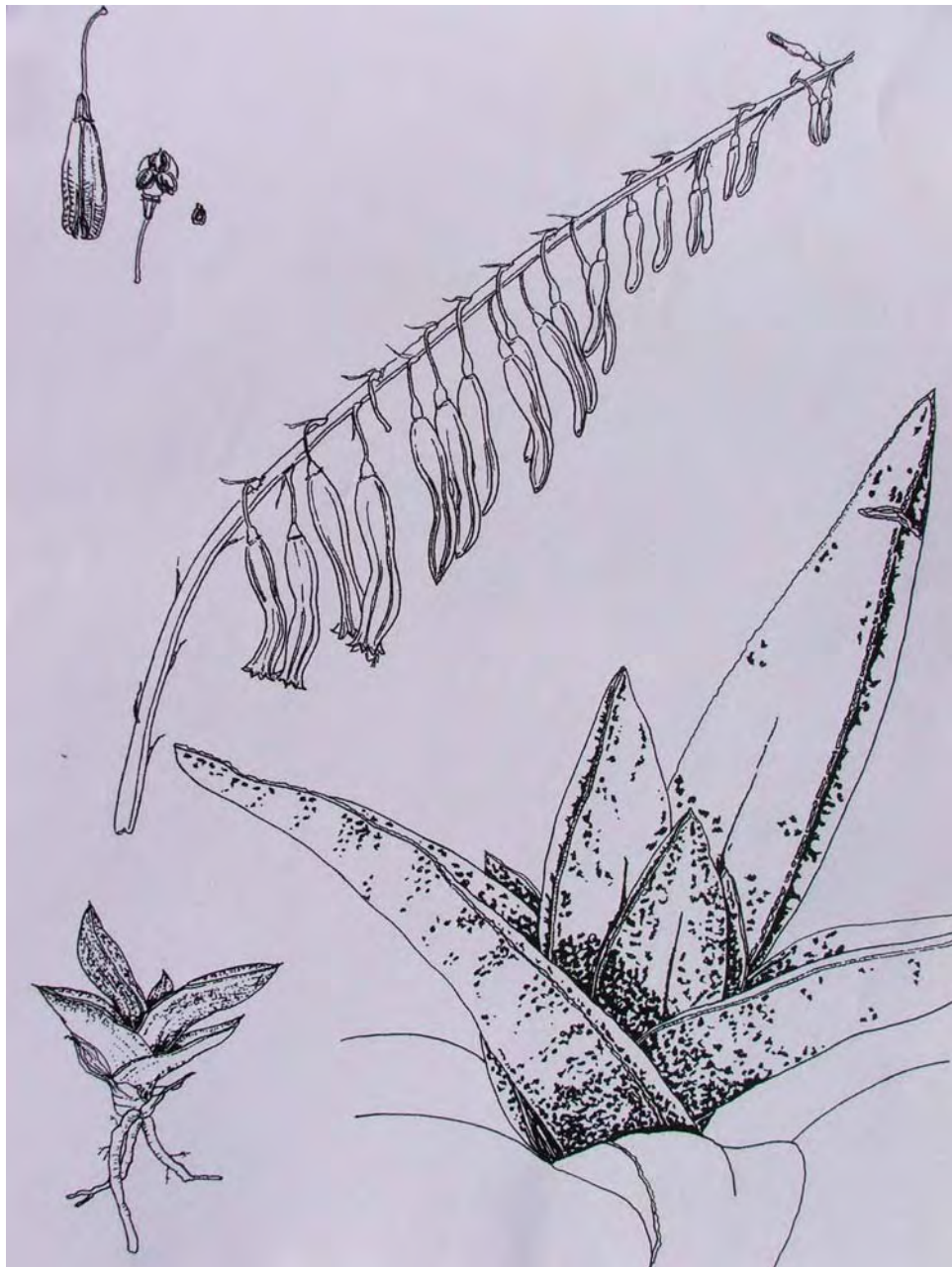


PLATE 49

Gasteria tukhelensis. Drawn from material from Ntshongweni, Thukela River, KwaZulu-Natal (*Van Jaarsveld 17996*). Artist: Lisa Strachan.

51. *Haworthia attenuata* (Enon form)



PLATE 51

Haworthia attenuata. Depicted in habitat at the Enon River, Eastern Cape (Van Jaarsveld 17833, 365/03). Artist: Gerhard Marx.

62. *Trachyandra tabularis*



PLATE 62

Trachyandra tabularis. Shown in habitat above Window Gorge, Table Mountain, Cape Peninsula, Western Cape (Van Jaarsveld 22891). Artist: Vicki Thomas.

63. *Albuca batteniana*



PLATE 63

Albuca batteniana. Drawn from material grown at Kirstenbosch (from coastal cliffs near Morgan's Bay, Eastern Cape, *Van Jaarsveld 16617*). Artist: Vicki Thomas.

64. *Albuca cremnophila*



PLATE 64

Albuca cremnophila. From Baviaanskloof, Eastern Cape (Van Jaarsveld 12171). Artist: Tamlin Blake.

65. *Albuca crudenii*



PLATE 65

Albuca crudenii. Drawn from plants grown in the Kirstenbosch cliff-plant collection (material collected by Tony Dold near Grahamstown, Eastern Cape). Note the production of bulbils at the base of the bulb (cloning). Artist: Lisa Strachan.



68. *Albuca thermanum*



PLATE 68

Albuca thermanum. Grown in the Kirstenbosch cliff-plant collection (type material from Badspoort, near Calitzdorp).
Artist: Vicki Thomas.

69. *Drimia cremnophila*

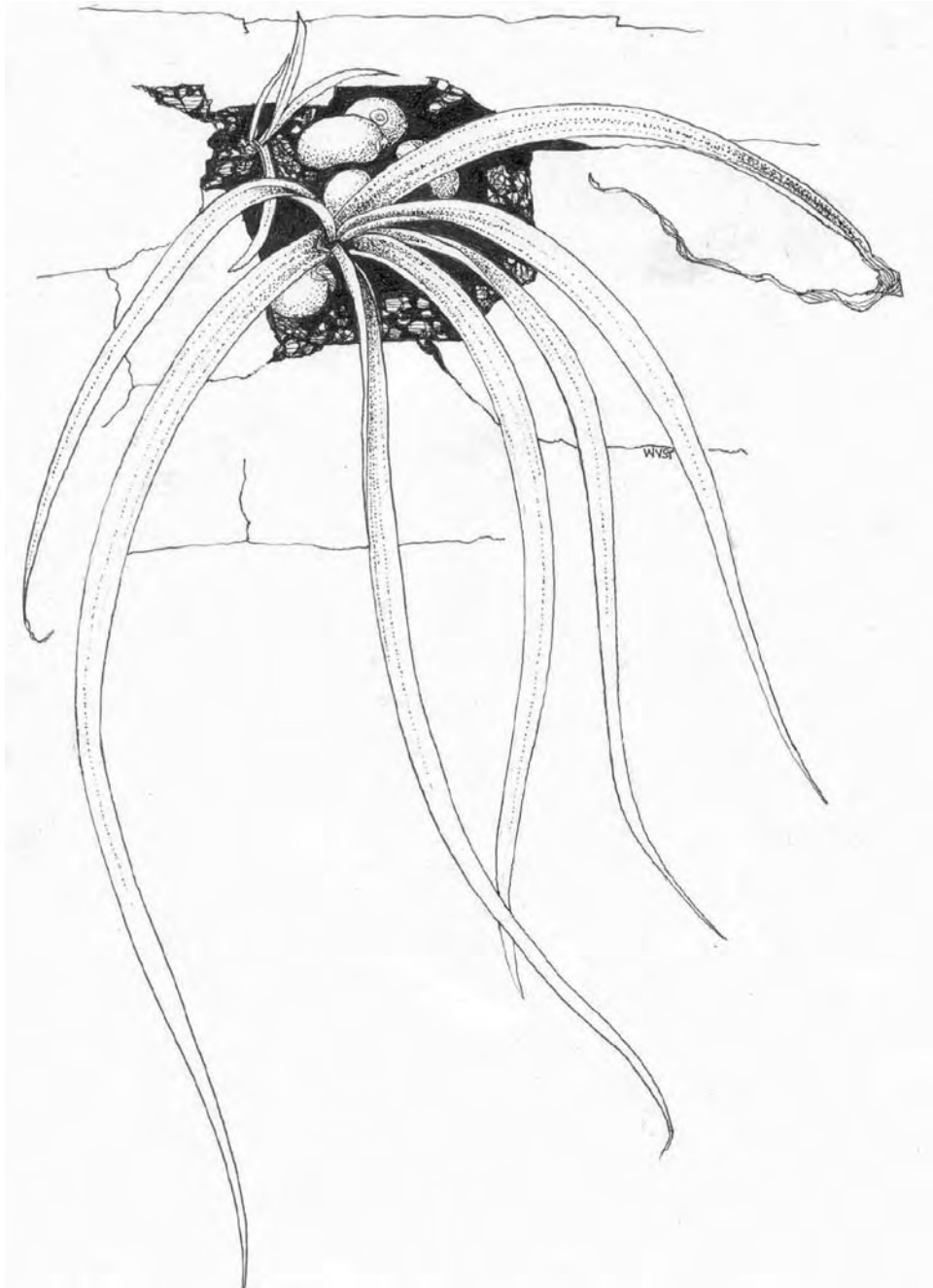


PLATE 69

Drimia cremnophila. Sketched from a plant grown at Kirstenbosch (from a shale cliff face along the Mzimvubu River, Transkei region of the Eastern Cape, Van Jaarsveld, Xaba & Harrower 97). Artist: Vicki Thomas.

71. *Drimia loedolffiae*



PLATE 71

Drimia loedolffiae. Drawn from a plant cultivated at Kirstenbosch (material from near the mouth of the Kei River, Eastern Cape, *Van Jaarsveld 17914*). Artist: Jeanette Loedolff.

72. *Drimia mzimvubuensis*



PLATE 72

Drimia mzimvubuensis (type plant). Drawn from plants collected on a shale cliff along the Mzimvubu River, Transkei region, Eastern Cape. Artist: Elbe Joubert.

73. *Drimia uniflora*

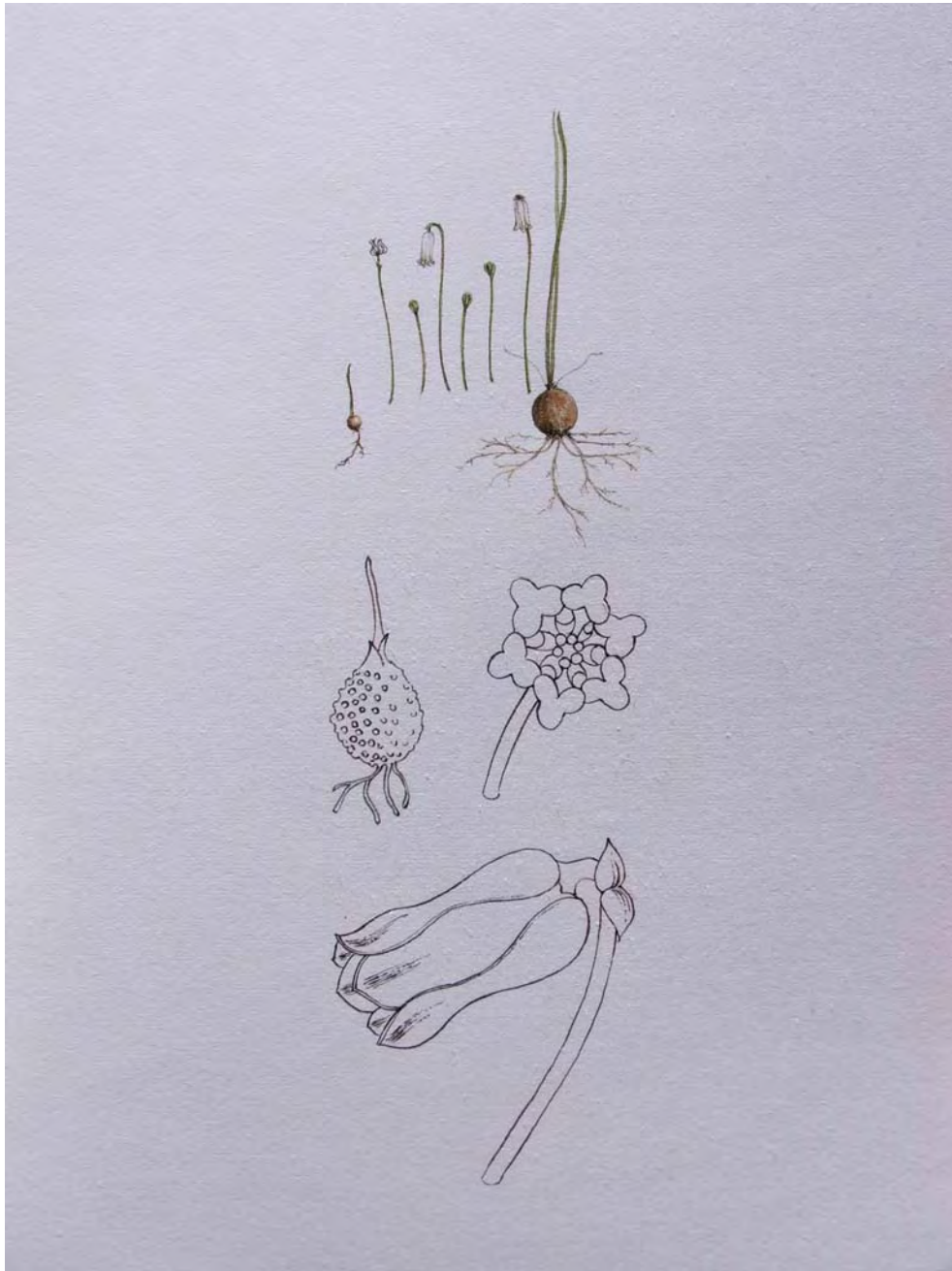


PLATE 73

Drimia uniflora (= *Litanthus pusillus*). Drawn from cultivated material at Kirstenbosch (from Aasvoëlberg cliffs, Willowmore, Eastern Cape, *Van Jaarsveld & Nordenstam 20041*). Artist: Lisa Strachan.

75. *Ledebouria cremnophila*



PLATE 75

Ledebouria cremnophila. In flower in its sandstone cliff-face habitat (Kaaprivierspoort, Mpumalanga, *Van Jaarsveld 19372*). Artist: Jeanette Loedolff.

76. *Ledebouria venterii*



PLATE 76

Ledebouria venterii (type plant). Flowering in cultivation at Kirstenbosch.
Artist: Jeanette Loedolff.

78. *Ornithogalum longibracteatum*



PLATE 78

Ornithogalum longibracteatum. In its cliff-face habitat at Tsolorha, Bashee River, Transkei region, Eastern Cape (*Van Jaarsveld 16896*). Note the production of bulbils at the base of the bulb (cloning). Artist: Jeanette Loedolff.

79. *Ornithogalum pendens*



PLATE 79

Ornithogalum pendens. Shown in its habitat, a sandstone cliff at Skaap-rivierspoort, Namaqualand, Northern Cape (drawn from the type collection).
Artist: Vicki Thomas.

82. *Lavrania haagnerae*



PLATE 82

Lavrania haagnerae. Depicted on a cliff west of Sesfontein (Van Jaarsveld 19879). Artist: Gerhard Marx.

85. *Kleinia galpinii*



PLATE 85

Kleinia galpinii. Grown in the Kirstenbosch cliff-plant collection. Plant collected on a cliff near Barberton, Mpumalanga. Artist: Vicki Thomas.

86. *Othonna armiana*



PLATE 86

Othonna armiana. Drawn from a plant growing in the Kirstenbosch cliff-plant collection (material from Rooiberg, Eksteenfontein, Richtersveld, Northern Cape, *Van Jaarsveld & Kuhn 8188*). Artist: Jeanette Loedolff.



87. *Othonna capensis*



PLATE 87

Othonna capensis. Drawn from a plant growing in the Kirstenbosch cliff-plant collection (material from Valley of Desolation, Graaff-Reinet, Eastern Cape, *Van Jaarsveld 16589*). Artist: Jeanette Loedolff.

88. *Othonna cremnophila*



PLATE 88

Othonna cremnophila. Drawn from a plant growing in the Kirstenbosch cliff-plant collection (material from Rosyntjieberg, Richtersveld, Northern Cape, Van Jaarsveld 19119). Artist. Lisa Strachan.

89. *Othonna triplinervia* (cremnophilous form)



PLATE 89

Othonna triplinervia. Painted from a plant growing in the Kirstenbosch cliff-plant collection (material from Enon, Eastern Cape, *Van Jaarsveld 17855*). Artist: Jeanette Loedolff.

90. *Senecio medley-woodii*



PLATE 90

Senecio medley-woodii. Drawn from a plant growing in the Kirstenbosch cliff-plant collection (material from Mzimvubu River, Transkei, Eastern Cape, *Van Jaarsveld, Harrower & Xaba* 20). Artist: Jeanette Loedolff.

92. *Senecio pondoensis*



PLATE 92

Senecio pondoensis. Drawn from a plant growing in the Kirstenbosch cliff-plant collection (material from Mzamba River, Transkei region, Eastern Cape, *Van Jaarsveld, Styles & Buring 19297*). Artist: Jeanette Loedolff.



97. *Adromischus cristatus* var. *schonlandii*



PLATE 97

Adromischus cristatus var. *schonlandii*. Drawn from a plant growing in the Kirstenbosch cliff-plant collection (material from the Kouga Dam, Eastern Cape, *Van Jaarsveld 17102*, collected 19 December 2001).
Artist: Jeanette Loedolff.

100. *Adromischus fallax*



PLATE 100

Adromischus fallax. Drawn from a plant growing in the Karoo Desert National Botanical Garden. Artist: Elise Bodley.

101. *Adromischus leucophyllus*



PLATE 101

Adromischus leucophyllus. Painted from a plant in the Kirstenbosch cliff-plant collection (material from Keurkloof, De Doorns, Hex River Valley, Western Cape, *Van Jaarsveld 19556*). Artist: Vicki Thomas.

104. *Adromischus subdistichus*



PLATE 104

Adromischus subdistichus. Drawn from a plant growing in the growing in the Karoo Desert National Botanical Garden (material from Nuwekloof Pass, Baviaanskloof, Eastern Cape). Artist: Elise Bodley.

106. *Cotyledon barbeyi* var. A



PLATE 106

Cotyledon barbeyi var. A. Drawn from a plant in the Kirstenbosch cliff-plant collection (material from Wyllies Poort, Limpopo Province, *Van Jaarsveld 18035*). Artist: Vicki Thomas.

108. *Cotyledon pendens*



PLATE 108

Cotyledon pendens. Drawn from a plant growing in the Kirstenbosch cliff-plant collection (drawn from the type collection from Tsolorha, Bashee River, Transkei region, Eastern Cape). Artist: Lisa Strachan.

109. *Cotyledon tomentosa* subsp. *tomentosa*



PLATE 109

Cotyledon tomentosa subsp. *tomentosa*. Drawn from a plant growing in the Kirstenbosch cliff-plant collection (material from Kouga Dam, Eastern Cape, *Van Jaarsveld 17180*). Artist: Gillian Foster.

115. *Crassula capitella* subsp. *thyrsiflora* (cremnophilous form)



PLATE 115

Crassula capitella subsp. *thyrsiflora*. Drawn from plants in the Kirstenbosch cliff-plant collection (material from cliffs at Gertsmitkloof, Baviaanskloof, Eastern Cape, *Van Jaarsveld* 7234). Artist: Lisa Strachan.

116. *Crassula cremnophila*



PLATE 116

Crassula cremnophila. Drawn from plants in the Kirstenbosch cliff-plant collection (material from cliffs at Keurkloof, Kouga River, Eastern Cape, *Van Jaarsveld 17368*). Artist: Cora Jardine.



116a. *Crassula cremnophila*



PLATE 116a

Crassula cremnophila. Drawn from plants in the Kirstenbosch cliff-plant collection (material from cliffs at Keurkloof, Kouga River, Eastern Cape, *Van Jaarsveld 17368*). Artist: Lisa Strachan.

125. *Crassula montana* subsp. *montana*



PLATE 125

Crassula montana subsp. *montana*. Drawn from plants in the Kirstenbosch cliff-plant collection (material from cliffs at Badspoort near Calitzdorp, Western Cape, *Van Jaarsveld 14144*). Artist: Lisa Strachan.

131. *Crassula perforata* subsp. *kougaensis*



PLATE 131

Crassula perforata subsp. *kougaensis*. Drawn from plants in the Kirstenbosch cliff-plant collection (material from cliffs at Kouga Dam, Eastern Cape, *Van Jaarsveld* 9905). Artist: Gillian Foster.

142. *Crassula sladenii*



PLATE 142

Crassula sladenii. Drawn from plants growing in the Kirstenbosch cliff-plant collection (material from cliffs at Konsertnaberg, Ai-Ais Richtersveld Transfrontier National Park, southern Namibia, *Van Jaarsveld 21070*). Artist: Jeanette Loedolff.

143. *Crassula smithii*



PLATE 143

Crassula smithii. Drawn from plants in the Kirstenbosch cliff-plant collection (material from cliffs at Noodsberg, KwaZulu-Natal, collected by Gideon Smith). Artist: Vicki Thomas.

145. *Crassula streyi*



PLATE 145

Crassula streyi. Drawn from plants in the Kirstenbosch cliff-plant collection (material from Mzamba, northern Transkei region, Eastern Cape, *Van Jaarsveld 18258*). Artist: Jeanette Loedolff.



145a. *Crassula streyi*



PLATE 145a

Crassula streyi. Drawn from plants in the Kirstenbosch cliff-plant collection (material from Mtamvuna, southern KwaZulu-Natal). Artist: Jeanette Loedolff.

151. *Tylecodon bruynsii*



PLATE 151

Tylecodon bruynsii. Painted from a plant in the Kirstenbosch cliff-plant collection (material from south-facing cliffs, Kuamsibberg, Hunsberg, southern Namibia, *Van Jaarsveld 21088*). Artist: Vicki Thomas.

155. *Tylecodon ellaphieae*



PLATE 155

Tylecodon ellaphieae (type). Drawn from a plant in the Kirstenbosch collection (material from Rosyntjieberg, Richtersveld, Northern Cape). Artist: Ellaphie Ward-Hilhorst.

157. *Tylecodon petrophilus*



PLATE 157

Tylecodon petrophilus. Drawn from the type plant in the Kirstenbosch cliff-plant collection (material from south-facing cliffs in Skaaprivierspoort, Namaqualand, Northern Cape). Artist: Vicki Thomas.

159. *Tylecodon sulphureus* var. *armianus*



PLATE 159

Tylecodon sulphureus var. *armianus* (type). Painted from a plant in the Kirstenbosch collection (material from south-facing cliffs, Pellaberg, Northern Cape). Artist: Ellaphie Ward-Hilhorst.

164. *Streptocarpus kentaniensis*



PLATE 164

Streptocarpus kentaniensis. Drawn from a plant growing in the Kirstenbosch cliff-plant collection (material from Kei River, Eastern Cape, *Van Jaarsveld 17923*).
Artist: Vicki Thomas.

166. *Aeollanthus rydingianus*



PLATE 166

Aeollanthus rydingianus. Drawn from plants collected at Omavanda, Baynes Mountains, northern Namibia (type collection). Artist: Vicki Thomas.

168. *Plectranthus ernstii*



PLATE 168

Plectranthus ernstii (type collection). Painted from plants in the Kirstenbosch collection (material from south-facing cliffs, Oribi Gorge, southern KwaZulu-Natal). Artist: Lynne MacKenzie.

169. *Plectranthus mutabilis*



PLATE 169

Plectranthus mutabilis. Drawn from plants collected on dolomite cliffs at Sudwala Caves, Mpumalanga. Artist: Lynne MacKenzie.

170. *Plectranthus mzimvubuensis*

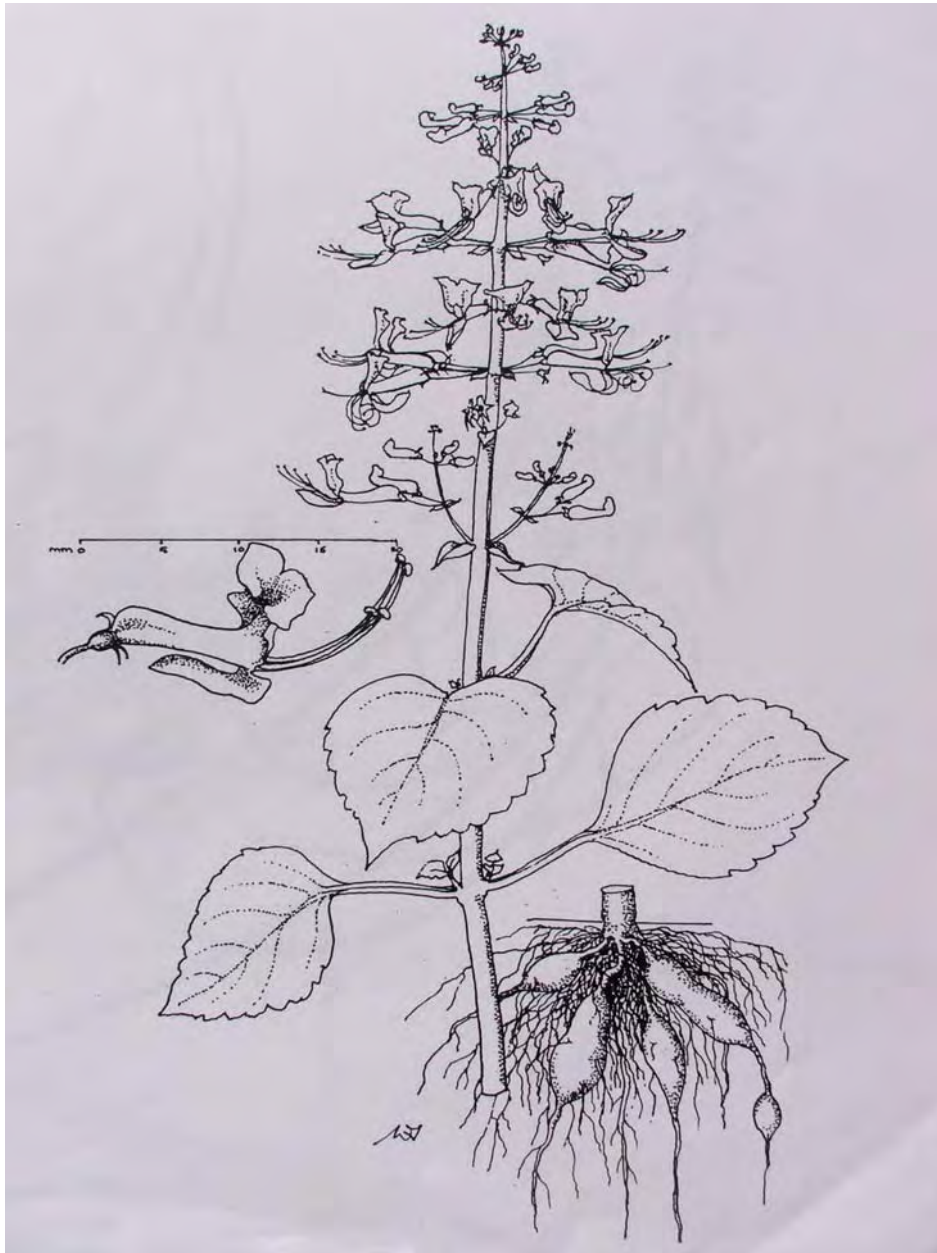


PLATE 170

Plectranthus mzimvubuensis. Drawn from plants (type collection) collected at the Mzimvubu River, Transkei region, Eastern Cape. Artist: Vicki Thomas.

170a. *Plectranthus mzimvubuensis*



PLATE 170a

Plectranthus mzimvubuensis. Painted from plants (type collection) collected along the Mzimvubu River, Transkei region, Eastern Cape. Artist: Vicki Thomas.

172. *Plectranthus saccatus* subsp. *pondoensis*



PLATE 172

Plectranthus saccatus subsp. *pondoensis*. Drawn from plants grown at the Kirstenbosch collection (material from sandstone cliffs at Oribi Gorge, type collection). Artist: Elise Bodley.

174. *Carruanthus peersii*



PLATE 174

Carruanthus peersii. Drawn from a plant grown in the Kirstenbosch cliff-plant collection (material from Toorwaterspoort, Groot Swartberg, Western Cape, *Van Jaarsveld 17412*). Artist: Jeanette Loedolff.



189. *Conophytum ricardianum* subsp. *ricardianum*

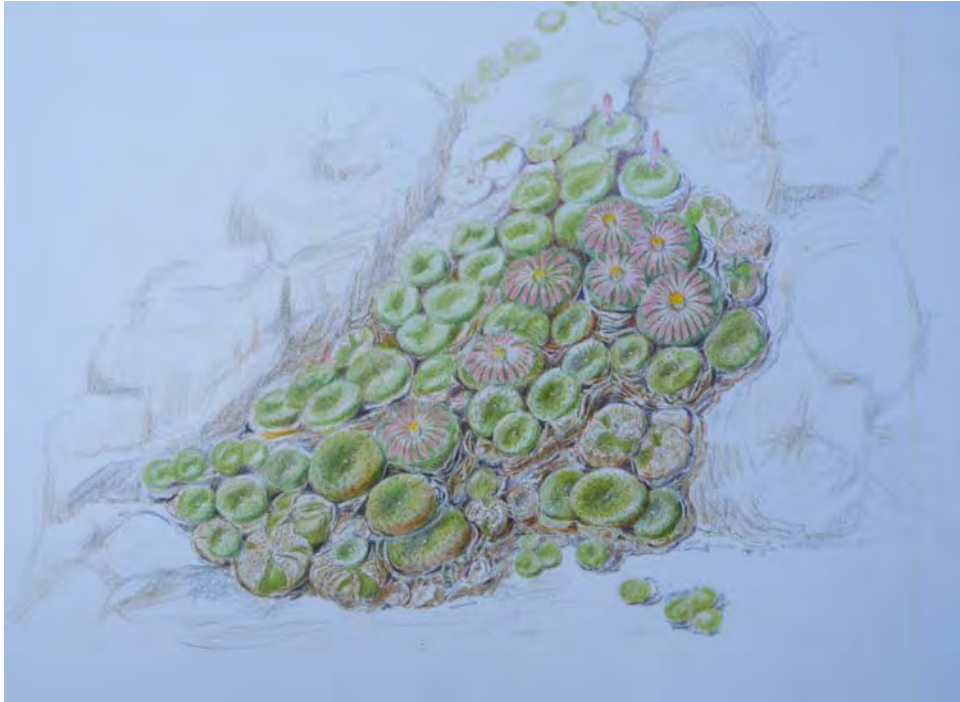


PLATE 189

Conophytum ricardianum subsp. *ricardianum*. Depicted in habitat on Kuamsib-berg, Hunsberg, southern Namibia (*Van Jaarsveld 21087*). Artist: Jeanette Loedolff.



190. *Conophytum stephanii* subsp. *stephanii*

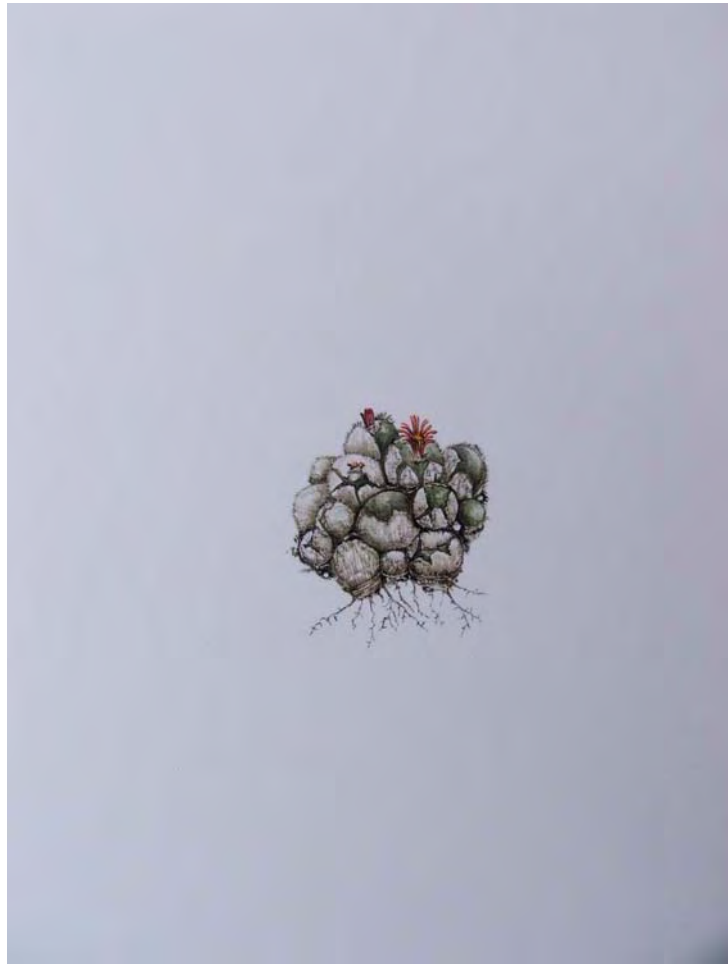


PLATE 190

Conophytum stephanii subsp. *stephanii*. Drawn from a plant collected on the Rosyntjieberg, Richtersveld, Northern Cape (*Van Jaarsveld 19130*). Artist: Lisa Strachan.

192. *Conophytum taylorianum* subsp. *ernianum*



PLATE 192

Conophytum taylorianum subsp. *ernianum*. Drawn from a plant collected on the Hohenzollern, Hunsberg, southern Namibia (*Van Jaarsveld 21032*). Artist: Lisa Strachan.

193. *Conophytum taylorianum* subsp. *rosynense*



PLATE 193

Conophytum taylorianum subsp. *rosynense*. Painted from a plant collected on the Rosyntjieberg, Richtersveld, Ai-Ais Richtersveld Transfrontier National Park, Northern Cape (*Van Jaarsveld* 22271, 580/09). Artist: Jeanette Loedolff.

196. *Delosperma esterhuyseniae*



PLATE 196

Delosperma esterhuyseniae. Drawn from a plant grown in the Kirstenbosch cliff-plant collection (material from Gertsmitskloof, Baviaanskloof, Eastern Cape, *Van Jaarsveld* 7245). Artist: Jeanette Loedolff.

202. *Delosperma tradescantioides*



PLATE 202

Delosperma tradescantioides. Drawn from a plant grown in the Kirstenbosch cliff-plant collection (material from cliffs along the Kei River, Eastern Cape, collected by Cameron MacMaster & Rhoda van Zijl). Artist: Jeanette Loedolff.

204. *Delosperma waterbergense*



PLATE 204

Delosperma waterbergense. Drawn from a plant grown in the Kirstenbosch cliff-plant collection (material from cliffs on the Waterberg, Marakele National Park, Limpopo Province, *Van Jaarsveld 17953*). Artist: Jeanette Loedolff.

207. *Drosanthemum expersum*



PLATE 207

Drosanthemum expersum. Drawn from a plant grown in the Kirstenbosch cliff-plant collection. Note the woody resprouting base and the young red fruiting capsules (material from cliffs on the Baviaansberg, Western Cape Province, *Van Jaarsveld 18621*). Artist: Jeanette Loedolff.

211. *Jensenobotrya lossowiana*



PLATE 211

Jensenobotrya lossowiana. Painted from a plant at Dolphin Head on the southern Namibian coast (*Van Jaarsveld 21145*). Artist: Jeanette Loedolff.

214. *Oscularia cremnophila*



PLATE 214

Oscularia cremnophila. Drawn from a plant grown at the Kirstenbosch cliff-plant collection (material from Steenbokfontein, near Elands Bay, Western Cape, from the type collection). Artist: Lisa Strachan.

221. *Dewinteria petrophila*



PLATE 221

Dewinteria petrophila. Painted from a plant grown at the Kirstenbosch cliff-plant collection (material from Otjihipa Mountains, Kaokoveld, Namibia). Artist: Vicki Thomas.