


Publikacja / Publication	Temperature as a likely driver shaping global patterns in mineralogical composition in bryozoans: implications for marine calcifiers under global change, Figuerola Blanca, Griffiths Huw J., Krzemińska Małgorzata, Piwoni-Piórewicz Anna, Iglíkowska Anna, Kukliński Piotr
DOI wersji wydawcy / Published version DOI	<a href="http://dx.doi.org/10.1111/ecog.06381">http://dx.doi.org/10.1111/ecog.06381</a>
Adres publikacji w Repozytorium URL / Publication address in Repository	<a href="https://repozytorium.bg.ug.edu.pl/info/article/UOGc5a2d8d5d22d42f4ad7fd50d85e627c8/">https://repozytorium.bg.ug.edu.pl/info/article/UOGc5a2d8d5d22d42f4ad7fd50d85e627c8/</a>
Data opublikowania w Repozytorium / Deposited in Repository on	4 sty 2023
Rodzaj licencji / Type of licence	Attribution (CC-BY 4.0) 
Cytuj tę wersję / Cite this version	Figuerola Blanca, Griffiths Huw J., Krzemińska Małgorzata, Piwoni-Piórewicz Anna, Iglíkowska Anna, Kukliński Piotr: Temperature as a likely driver shaping global patterns in mineralogical composition in bryozoans: implications for marine calcifiers under global change, <i>Ecography</i> , vol. 2023, no. 1, 2023, Article number: e06381, pp. 1-14, DOI:10.1111/ecog.06381

## Research article

# Temperature as a likely driver shaping global patterns in mineralogical composition in bryozoans: implications for marine calcifiers under global change

Blanca Figuerola<sup>1</sup>✉, Huw J. Griffiths<sup>2</sup>, Malgorzata Krzeminska<sup>3</sup>, Anna Piwoni-Piorewicz<sup>4</sup>, Anna Iglukowska<sup>5</sup> and Piotr Kuklinski<sup>3</sup>

<sup>1</sup>Inst. of Marine Sciences (ICM-CSIC), Barcelona, Spain

<sup>2</sup>British Antarctic Survey, Cambridge, UK

<sup>3</sup>Inst. of Oceanology, Polish Academy of Sciences, Sopot, Poland

<sup>4</sup>Inst. of Oceanography, Univ. of Gdansk, Gdynia, Poland

<sup>5</sup>Laboratory of Biosystematics and Ecology of Aquatic Invertebrates, Dept of Evolutionary Genetics and Biosystematics, Faculty of Biology, Univ. of Gdańsk, Gdańsk, Poland

Correspondence: Blanca Figuerola ([bfiguerola@gmail.com](mailto:bfiguerola@gmail.com))

## Ecography

2023: e06381

doi: [10.1111/ecog.06381](https://doi.org/10.1111/ecog.06381)

Subject Editor: Julia Baum

Editor-in-Chief: Miguel Araújo

Accepted 20 October 2022



The Southern Ocean is showing one of the most rapid responses to human-induced global change, thus acting as a sentinel of the effects on marine species and ecosystems. Ocean warming and acidification are already impacting benthic species with carbonate skeletons, but the magnitude of these changes to species and ecosystems remains largely unknown. Here we provide the largest carbonate mineralogical dataset to date for Southern Ocean bryozoans, which are diverse, abundant and important as carbonate producers, thus making them excellent for monitoring the effects of ocean warming and acidification. To improve our understanding of how bryozoans might respond to ocean warming and acidification, we assess latitudinal and seafloor temperature patterns of skeletal mineralogy using bryozoan species occurrences together with temperature data for the first time. Our findings, combining new mineralogical data with published data from warmer regions, show that the proportions of high-Mg calcite and biminerals species increase significantly towards lower latitudes and with increasing seawater temperature. These patterns are consistent with the hypothesis that seawater temperature is likely a significant driver of variations in bryozoan mineralogy at a global scale.

Keywords: acidification, Antarctic, aragonite, calcifying organisms, Mg-calcite, ocean warming

## Introduction

Increased levels of atmospheric carbon dioxide (CO<sub>2</sub>) as a result of human activities are driving rising temperatures, ocean acidification and consequent impacts on marine ecosystems (Kroeker et al. 2013). Climate change models predict a global increase



[www.ecography.org](http://www.ecography.org)

© 2022 The Authors. Ecography published by John Wiley & Sons Ltd on behalf of Nordic Society Oikos

This is an open access article under the terms of the Creative Commons Attribution License, which permits use, distribution and reproduction in any medium, provided the original work is properly cited.

in mean sea surface temperature of 1–4°C and a decrease of ~0.3–0.4 pH by the year 2100 (IPCC 2014, 2019). The Southern Ocean, the water masses extending south of the Polar Front to the coasts of the Antarctic continent, is predicted to be among the first and most highly affected regions by ocean acidification due to increased solubility of CO<sub>2</sub> at low temperatures leading to low carbonate ion concentrations ([CO<sub>3</sub><sup>2-</sup>]) (Orr et al. 2005, Fabry et al. 2009). Ocean acidification is also shallowing the saturation horizon, which is the depth below which calcium carbonate (CaCO<sub>3</sub>) minerals (such as aragonite and calcite) can dissolve. It is anticipated that surface waters in some Southern Ocean regions will become undersaturated with respect to aragonite and calcite by 2050 and 2095, respectively (Orr et al. 2005, McNeil and Matear 2008), and that 70% of the Southern Ocean could be aragonite undersaturated by 2100 (Hauri et al. 2016). Due to the low interannual variability in surface ocean [CO<sub>3</sub><sup>2-</sup>] of this region (Conrad and Lovenduski 2015), many organisms may be unable to adapt rapidly to these changing conditions. Some parts of the continent, such as the western Antarctic Peninsula, are also among the fastest warming regions globally (Steig et al. 2009). The Southern Ocean acts as a sentinel region for evaluating the impacts of ocean warming and acidification on marine organisms and for making predictions about future impacts at lower latitudes where ocean acidification is expected to occur later (Andersson et al. 2008, Fabry et al. 2009, Figuerola et al. 2021).

Understanding how marine organisms can cope with these environmental changes is essential for predicting the future of marine ecosystems. Marine calcifiers, organisms which build their skeletons from CaCO<sub>3</sub>, may be particularly sensitive to these threats. Increased pCO<sub>2</sub> and decreased pH, caused by ocean acidification, increase the solubility of CaCO<sub>3</sub> skeletons (Andersson et al. 2008, Fabry 2008, Figuerola et al. 2021). The ability of marine calcifiers to respond to these rapid environmental stresses may, therefore, be compromised, especially for Southern Ocean taxa, which are often characterized by having lower metabolic, development and growth rates than related species from warmer latitudes (Peck 2001, 2005, 2018). Southern Ocean taxa that deposit more soluble CaCO<sub>3</sub> mineral phases such as aragonite and high Mg-calcite could be at greater risk to changes in ocean carbonate chemistry than species secreting a mixture of calcite and aragonite (bimineralic) or lower Mg-calcite levels (Andersson et al. 2008, McClintock et al. 2011, 2017, Lebrato et al. 2013, Figuerola et al. 2021). For instance, common habitat-forming or key predator taxa, which have important roles in Antarctic ecosystems, have aragonitic (e.g. scleractinian cold-water corals) or high Mg-calcite skeletons (e.g. echinoderms and bryozoans) (Turley et al. 2007, McClintock et al. 2011, Bax and Cairns 2014, Figuerola et al. 2019). The negative ocean acidification impact on these taxa could thus lead to the loss of habitat complexity and resilience in these ecosystems.

Ocean warming may even accelerate skeletal solubility as a positive correlation between Mg-calcite and/or aragonite and seawater temperature has been found in diverse phyla such as molluscs, serpulid annelids, foraminifera,

corals, echinoderms, bryozoans and crustaceans (Chave 1954, Lowenstam 1954, Cohen and Branch 1992, Chang et al. 2004). Seawater temperature seems to affect the spatial distribution of marine calcifiers, with higher abundances of species depositing aragonite and/or higher Mg-calcite levels in the tropics, although this pattern has yet to be rigorously tested in some groups such as bryozoans.

In addition, there remain uncertainties in the predicted effects of ocean warming on marine calcifiers because diverse environmental factors (e.g. salinity, pH, CaCO<sub>3</sub> saturation state, seawater Mg/Ca ratio and diet) and biological (e.g. skeletal growth rate) may interfere in the calcification process, especially on a local scale (Lowenstam and Weiner 1989, Borremans et al. 2009, Amsler et al. 2010, Ries 2010, Loxton et al. 2014a, Figuerola et al. 2015, Krzeminska et al. 2016, Lebrato et al. 2016, Duquette et al. 2018b, Kolbuk et al. 2019, Krzemińska et al. 2022). For instance, variability in seawater Mg/Ca ratios (Lebrato et al. 2020) is known to affect the skeletal Mg-calcite and mineralogy of a range of species (Ries 2010, Kolbuk et al. 2021). Among biological processes, 'vital effects' may distort or mask any signal of environmental effects on mineralogy (Weiner and Dove 2003). Plasticity is also a mechanism by which calcifiers such as molluscs may adapt to environmental changes, as observed when organisms are exposed to different experimental conditions (Hancock et al. 2020, Figuerola et al. 2021). Therefore, more studies are needed on a wider range of phyla and species with broad geographical ranges, skeletal mineralogies, biological traits and physiological processes.

Among calcifying taxa, bryozoans are abundant and speciose suspension-feeding aquatic invertebrates worldwide (> 6000 extant species; Bock and Gordon 2013), being present from the intertidal to the deep sea (Barnes and Kuklinski 2010, Figuerola et al. 2018). They are dominant members of many benthic communities, including the Antarctic region (Barnes and Kuklinski 2010, Figuerola et al. 2012). Many species are major carbonate sediment producers, thus being well represented in the fossil record (Taylor 2020) and good model systems for understanding ecological and evolutionary processes (Orr et al. 2022). The calcareous skeletons of bryozoans can be entirely calcitic, aragonitic or bimineralic, and incorporate varying amounts of Mg in their calcite, ranging from low Mg-calcite (LMC; < 4 wt% MgCO<sub>3</sub>), through intermediate Mg-calcite (IMC; 4–8%), to high Mg-calcite (HMC; > 8%) following the categories proposed by Rucker and Carver (1969) (Taylor et al. 2015).

Early studies exploring marine invertebrate mineralogy proved cheilostome mineralogy to be highly variable, unlike other taxa, thus having great potential for reconstruction changes (Lowenstam 1954, Rucker and Carver 1969, Poluzzi and Sartori 1975). The mineralogical studies have persisted and proliferated even to today (Borisenko and Gontar 1991, Bone and James 1993, Smith et al. 1998). In recent years significant efforts have been put into increasing data on skeletal mineralogy in a wide range of bryozoan species from Arctic (Kuklinski and Taylor 2009, Piwoni-Piórewicz et al. 2019, Iglíkowska et al. 2020, Krzemińska et al. 2022),

temperate (Steger and Smith 2005, Smith and Clark 2010, Loxton et al. 2014b), tropical (Taylor and Di Martino 2014, Taylor et al. 2016) and Antarctic (Loxton et al. 2013, 2014a, Figuerola et al. 2015, 2019, Krzeminska et al. 2016) regions. However, several reviews have pointed out that mineralogy is known only for a small proportion of living species at all latitudes (Smith et al. 2006, Taylor et al. 2009).

Southern Ocean bryozoans, which comprise over 300 species, exhibit interspecific variations in the Mg-calcite of their skeletons, and wide geographic and depth distributions (Hayward 1995, Barnes and Kuklinski 2010, De Broyer et al. 2011, Figuerola et al. 2012, 2017, Krzeminska et al. 2016), making them suitable indicators to monitor the effects of ocean warming and acidification in a hotspot for global change. As ecosystem engineers, this group also creates habitat heterogeneity and refugia for many associated macro- and micro-invertebrates and thus are likely to boost ecological resilience (Santagata et al. 2018). In this study, we present the largest carbonate mineralogical dataset for Southern Ocean bryozoans to date. To improve our understanding of how bryozoans might respond to ocean warming and acidification globally, we then employ rigorous correlative statistical analyses to assess latitudinal and seafloor temperature patterns of skeletal mineralogy. We hypothesized that seawater temperature is the main driver on influencing mineralogical composition in bryozoans at a global scale as maintaining aragonitic and HMC skeletons is more energetically demanding in cold waters. Thus, we expect that the seawater temperature affects spatial distribution of bryozoans. To our knowledge, this is the first study to test this hypothesis using a seafloor temperature data set and species occurrences combined with new and published mineralogical data.

## Material and methods

### Study area

Bryozoan specimens were collected from east Antarctica using beam trawl during the CEAMARC cruise on the RSV 'Aurora Australis' (2007–2009). The study area covers part of the region Terre Adélie (141–142°E) and George V Land (142–145°E). Collection depths ranged from 138 to 662 m. Sampling sites were geo-referenced using GPS and depth was recorded at each site (Fig. 1; Figuerola et al. 2022). On the research vessel, all bryozoan samples were preserved in 95% ethanol. Bryozoan colonies were identified to the lowest possible taxonomic rank in the laboratory using an optical microscope and a taxonomic reference guide (Hayward 1995). To confirm identification, a subset of specimens was bleached for 1–4 h in a 10% solution of sodium hypochlorite (domestic bleach, diluted using tap water), rinsed in freshwater, air-dried and examined using a LEO SEM at the Natural History Museum in London (Fig. 2).

### Mineralogical analyses

Specimens were cleaned carefully of epibionts using a scalpel blade to avoid mineralogical contamination. If possible a piece was cut from the growing edge of each specimen and air dried as described in previous studies (Kuklinski and Taylor 2009, Figuerola et al. 2015). Otherwise any available part of colony was used for analysis. The pieces were powdered using an agate pestle and mortar. Mineralogical analyses were carried out at the Natural History Museum using a high-precision Enraf-Nonius X-ray diffractometer (XRD) equipped

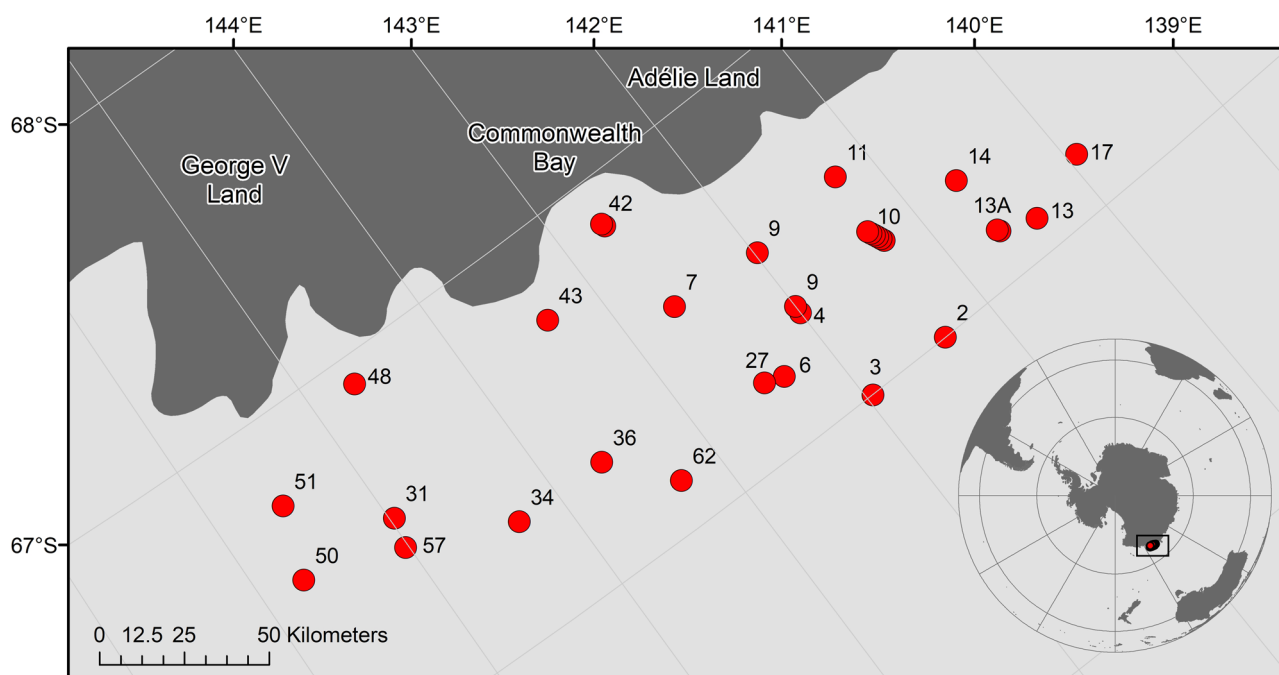


Figure 1. Map of the study area (Terre Adélie and George V Land) in east Antarctica and the sampling stations.



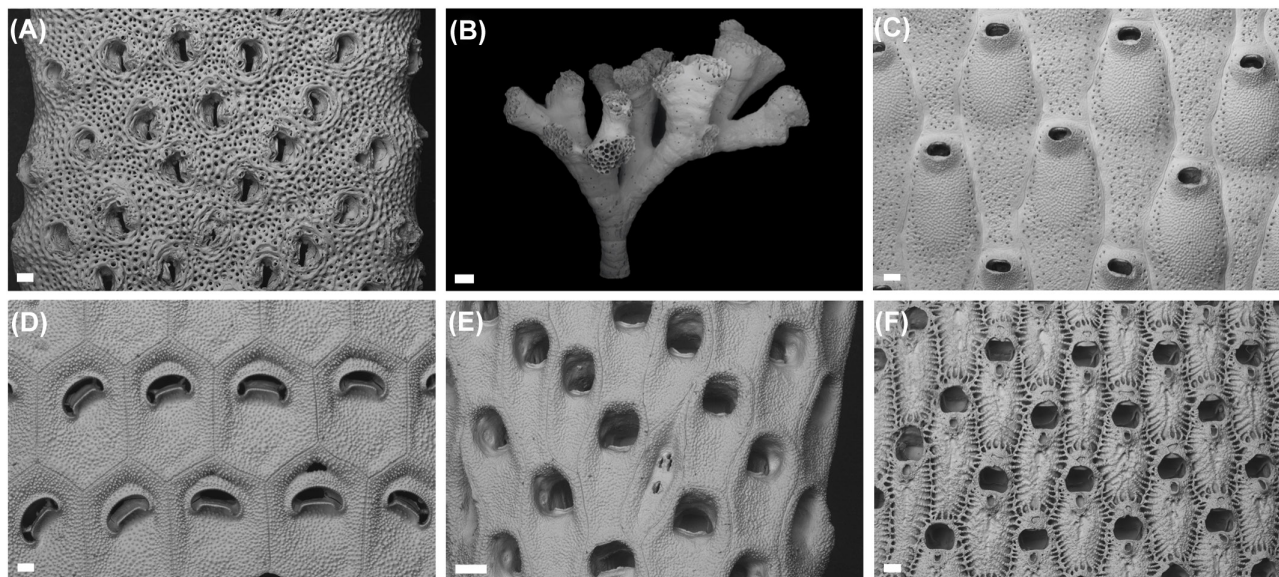


Figure 2. SEM images of six selected bryozoan species studied from east Antarctica. (A) *Systemopora contracta*, zooids on branch surface (scale bar = 200 µm); (B) *Fasciculipora ramosa*, colony (scale bar = 1 mm); (C) *Lageneschara lyrulata*, group of zooids (scale bar = 200 µm); (D) *Melicerita obliqua*, zooids from near centre of branch (scale bar = 100 µm); (E) *Chondriovelum adeliense*, group of zooids (scale bar = 200 µm); (F) *Astochoporella cassidula*, group of zooids (scale bar = 200 µm). Images by B. Figuerola.

with an INEL CPS-120 Curved Position Sensitive detector ( $-120^\circ$ , 2-theta) and a cobalt X-ray source. Operating conditions of the cobalt source were 40 kV and 40 mA. The tilt angle between source and sample was  $5.9^\circ$ . The horizontal slit system was set to 0.14 mm to confine the X-ray beam to pure cobalt  $K\alpha_1$ . An internal standard (NaCl) was added to the samples to correct for sample displacement. The samples were rotated during the measurements to improve the randomness of grain orientations in the X-ray beam. The 2-theta linearity of the detector was calibrated using  $Y_2O_3$  (yttrium (III) oxide) (99.9% BDH Laboratory Chemicals) and SRM 640 silicon powder (NIST) and the calibration curve was fitted using a least-squares cubic spline function. Peak positions were calibrated on  $Y_2O_3$  data from Mitric et al. (1997). Bryozoan skeleton was compared with external standard of calcite (Iceland spar) by fitting peak intensities of the sample patterns and the standard patterns. The wt%  $MgCO_3$  in calcite was calculated by measuring the position of the  $d_{104}$  peak, assuming a linear interpolation between  $CaCO_3$  and  $MgCO_3$  (Mackenzie et al. 1983). A linear trend of  $d_{104}$  versus mol%  $MgCO_3$  can be observed in the range between 0 and 17 mol%  $MgCO_3$  (Mackenzie et al. 1983); all analyses from the present study fall within this range. This composition information is accurate to within 2% on a well-calibrated instrument (Kuklinski and Taylor 2009).

### Temperature data

The seafloor temperature data set employed was that presented in Clarke et al. (2009). Seawater temperature values were taken from the World Ocean Atlas 2005, a data product of the Ocean Climate Laboratory of the U.S. National Oceanographic Data Centre ([www.nodc.noaa.gov/OC5/WOA05/pr\\_woa05.html](http://www.nodc.noaa.gov/OC5/WOA05/pr_woa05.html)).

Global mean annual ocean in situ temperature data interpolated into 33 standard vertical intervals (depth ranges) at a  $1^\circ$  spatial resolution were overlain onto a bathymetry grid (ETOPO1) (Amante and Eakins 2009). Seawater temperature data were then extracted when the depth range coincided with the bathymetry of the seafloor to create a seawater temperature data set. Potential temperature was calculated according to the UNESCO equation of state for seawater and the International Temperature Scale of 1990 (ITS-90) specified by the International Committee of Weights and Measures. A nearest neighbor interpolation was then used to create a seafloor temperature grid for both in situ and potential temperature in ArcGIS. Temperatures were extrapolated for each bryozoan occurrence record (latitude and longitude) to assign a temperature value.

### Literature search and bryozoan species distributions

We integrated new data from the current study with recent (Krzeminska et al. 2016, Loxton et al. 2018) and older mineralogy data from cheilostome and cyclostome bryozoans worldwide previously summarized by Smith et al. (2006) and Taylor et al. (2009). Available mineralogical data from genera with undetermined species, and also known species from the White Sea which has unusual conditions that may mask temperature influence (Krzemińska et al. 2022), were removed from the analyses (Figuerola et al. 2022). The global dataset comprised 549 species (102 Southern Ocean species, excluding six genera with indeterminate species). Calcite composition was classified as LMC, IMC and HMC. Data previously reported as mol%  $MgCO_3$  were converted to weight% (wt%)  $MgCO_3$  to facilitate comparisons.

To generate the mineral type and skeletal Mg-calcite distribution maps and graphs, we downloaded occurrence data for all living bryozoan species from the Global Biodiversity Information Facility (GBIF n.d.) (GBIF.org (28 January 2022) GBIF Occurrence Download <https://doi.org/10.15468/dl.59nzhf>). We used our list of 549 species with available mineralogical data (with species names verified using the World Register of Marine Species Taxon Match tool – [www.marinespecies.org/aphia.php?p=match](http://www.marinespecies.org/aphia.php?p=match)) to filter the downloaded GBIF data. Duplicate occurrence records (repeated combinations of latitude, longitude and scientific name) and any occurrences on land were removed. The filtered GBIF dataset comprised 96 241 occurrences for the 493 selected species that had occurrence records within GBIF (Figuerola et al. 2022).

### Statistical analysis

Coefficients of determination ( $R^2$ ) for the regressions and p-values were calculated to evaluate correlative relationships between latitude and temperature and mineralogical composition. Data were analysed and figures constructed in: R ver. 4.1.0/Rstudio ver. 1.4.1717, using the R packages Tidyverse (ggplot2) and Ggally ver. 2.1.2 (Wickham et al. 2019, Schloerke et al. 2021). Statistical significance was set at  $p < 0.05$ .

## Results

### Skeletal mineralogy of the Southern Ocean and warmer regions

Among the new samples ( $n = 126$ ) analysed in the present study, 37 Antarctic bryozoan species had skeletons consisting of calcite and were characterized by a wide range of Mg-calcite in the skeleton (1.52–7.55 wt%  $MgCO_3$ ; Fig. 3; Figuerola et al. 2022). The mean Mg-calcite levels for all analysed samples was  $4.15 \pm 1.28$  wt%  $MgCO_3$ . Fifty-seven percent of the species we examined were categorized as IMC (21 species), whereas the remaining 43% were categorized as LMC (16 species; Fig. 3).

The resulting data set, when combined similar data from the literature, included 102 Southern Ocean species ( $n = 1415$ ; Figuerola et al. 2022). The average Mg-calcite from all analysed samples was  $4.54 \pm 1.32$  wt%  $MgCO_3$ . Most species fell into the IMC category (68%; 69 species) while the remaining were in the LMC category (32%; 32 species) apart from *Beania erecta*, Waters 1904 which was in the HMC category (1%;  $8.03 \pm 1.56$  wt%  $MgCO_3$ ) (Fig. 4A–C; Figuerola et al. 2022).

Globally, 72% (397 species) of a total of 549 species were calcitic, 22% (122 species) bimineralic and 6% (30 species) aragonitic (Fig. 5A–D). Most bryozoan species had IMC (65%; 322 species) while the remaining had LMC (27%; 133 species) or HMC (8%; 41 species) (Fig. 6A–D).

### Global-scale latitudinal patterns of skeletal mineralogy

The proportions of occurrence records of different mineral types remained stable south of the Polar Front, with aragonite almost completely absent and bimineralic occurrence records less than 3% with most occurrence records (97%) dominated by calcite. North of the Polar Front was also dominated by calcite but to a lower level (~62–97%) and higher levels of bimineralic skeletons (~3–32% and 100% for a single occurrence record south of 60°S) (Figuerola et al. 2022). There was also a trend of increasing aragonite (from zero up to a maximum of ~9.5%) with decreasing latitude (Fig. 4D). There was a significant increase in the percentage of bimineralic occurrence records ( $R^2 = 0.16$ ;  $p = 0.017$ ) and decrease of calcitic occurrence records ( $R^2 = 0.19$ ;  $p = 0.01$ ) with an increase in seafloor water temperature (Fig. 5E). Aragonitic occurrence records were absent below 0°C and very low below 1°C (0.05%), with no significant trend in waters above that temperature ( $p = 0.11$ ) with proportions ranging between 1% and 11% of the total number of occurrences.

The proportions of LMC, IMC and HMC occurrence records did not vary south of the Polar Front either (Fig. 4E). IMC dominated occurrence records (60–68%), 30–36% of occurrence records were LMC and HMC was only present in very low proportions (1.5–5%). However, HMC species significantly increased in prevalence from the Polar Front towards lower latitudes ( $R^2 = 0.58$ ;  $p = 0.0025$ ; Fig. 4E) and with increasing seawater temperatures ( $R^2 = 0.48$ ;  $p = 3.6e^{-06}$ ; Fig. 6E). IMC species had the opposite trend, with a decrease towards lower latitudes ( $R^2 = 0.26$ ;  $p = 0.077$ ; Fig. 4E) and a significant decrease with increasing seawater temperatures ( $R^2 = 0.45$ ;  $p = 1.1e^{-06}$ ; Fig. 6E). No significant trend was found in LMC species north of the Polar Front with latitude or with temperature.

## Discussion

### Seawater temperature as a likely driver influencing mineralogical composition at a global scale

In the present study we have compiled, and in some cases analysed, the largest carbonate mineralogical and distribution dataset for Southern Ocean bryozoans to date, including data of approximately one-third of the known extant bryozoan species from Antarctica based on those listed in the Register of Antarctic Marine Species database (102 of 335 species) (De Broyer et al. 2022). This dataset thus increases our knowledge of the potential effects of global change on Antarctic bryozoans, an important phylum of invertebrates in the Antarctic benthos which creates framework habitats that enhance biodiversity and produces large quantities of carbonate sediments, thus making up significant blue carbon sinks (Barnes 2018). These data provide a useful baseline for understanding the vulnerability of different bryozoan species

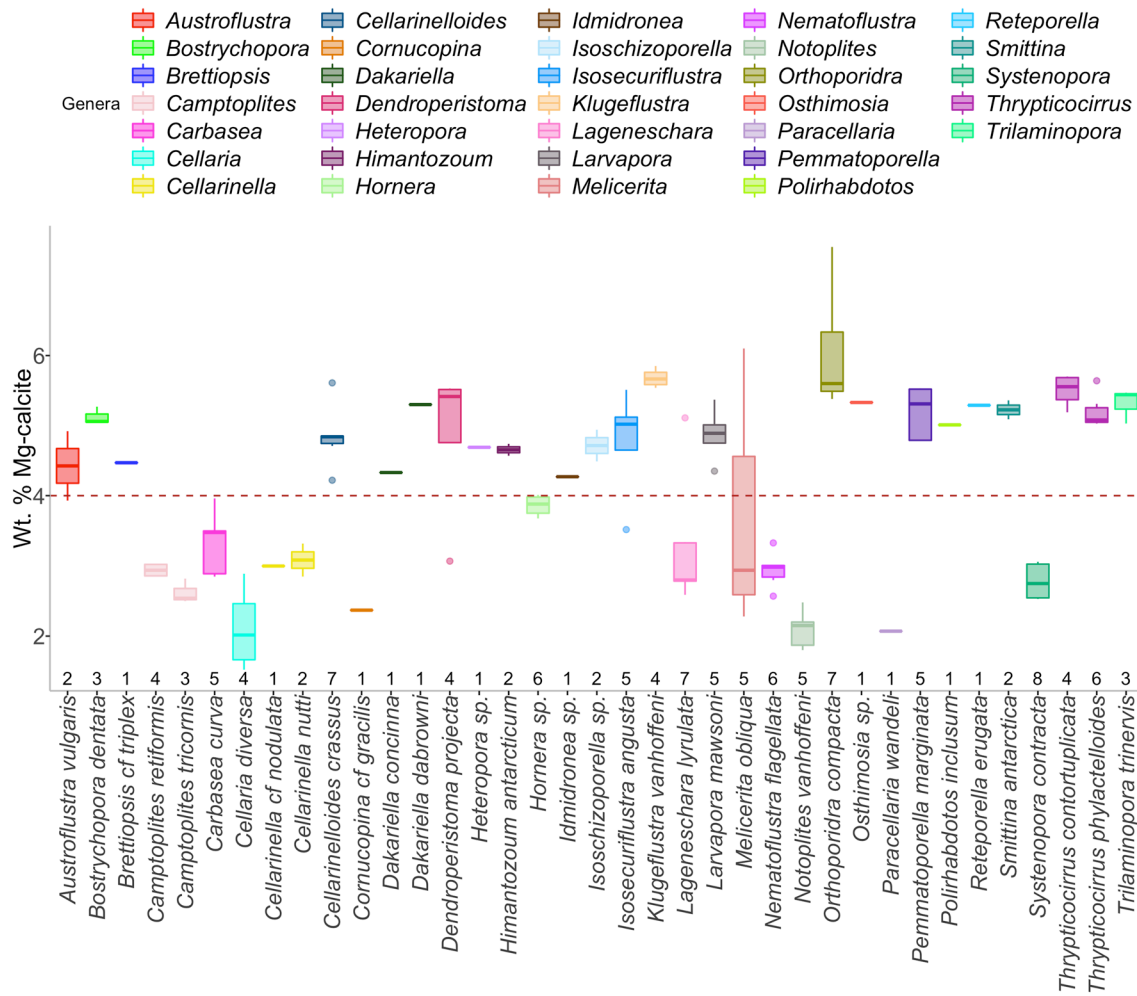


Figure 3. Mean values ( $\pm$  SD) of wt%  $MgCO_3$  in skeletal calcite of the new species analysed. Boxes show standard deviation around mean (mid-line), tail indicates range and dots are outliers. Data for species are presented alphabetically left to right. The horizontal dashed line indicates the upper boundary of the LMC. Numbers are sample sizes.

and make predictions of the effects of ocean acidification on benthic habitats and sediments.

Our results confirm that all Southern Ocean species have monomineralic calcite skeletons, as previously revealed by several studies on bryozoan skeletal mineralogy (Fig. 3, 4) (Borisenko and Gontar 1991, Taylor et al. 2009, Loxton et al. 2013, 2014a, Figuerola et al. 2015, 2019, Krzeminska et al. 2016). While occasional analyses of specimens belonging to the bryozoan species *Chondriovelum* [*Labiporella*] *adeliensis* and *Isosecuriflustra angusta* detected aragonite (Borisenko and Gontar 1991, Loxton et al. 2013), recent analyses including the current study contradict these findings and provide evidence of their monomineralic calcitic nature (Taylor et al. 2009, Krzeminska et al. 2016). We suggest that these detections of aragonite are likely due to sample contamination by epibionts or sediment (Taylor et al. 2015).

Our data illustrate that the skeletons of most Southern Ocean species of bryozoans are formed of IMC, some of LMC and a few of HMC, consistent with previous global data (Fig. 3, 4; Figuerola et al. 2022) (Smith et al. 2006,

Taylor et al. 2009). However, we found higher IMC (67 versus 65–58%) and LMC (32 versus 29–27%) percentages and a lower HMC (1 versus 13–8%) percentage compared to those from our own and previous global data as expected due to the higher solubility of HMC in cold waters (Mucci 1983, Davis et al. 2000, Smith et al. 2006, Taylor et al. 2009).

Our findings also reveal that the proportions of skeletal aragonite, bimineralic mixtures and calcite remained stable south of the Polar Front consistent with the low and nearly constant temperatures found in the Southern Ocean (Fig. 4D) (Moore et al. 1999). From the Polar Front boundary towards lower latitudes, we did not detect any clear general latitudinal trend (Fig. 4D) as previously found in studies that did not extrapolate values onto wider occurrence data (Taylor et al. 2009). However, when we plotted our mineralogical findings against the seafloor temperature, there were an increase in the proportions of bimineralic occurrence records ( $R^2 = 0.16$ ;  $p = 0.017$ ) and a decrease in the proportion of calcitic occurrence records ( $R^2 = 0.19$ ;  $p = 0.01$ ) with increasing temperature consistent with decreased costs of skeletal production



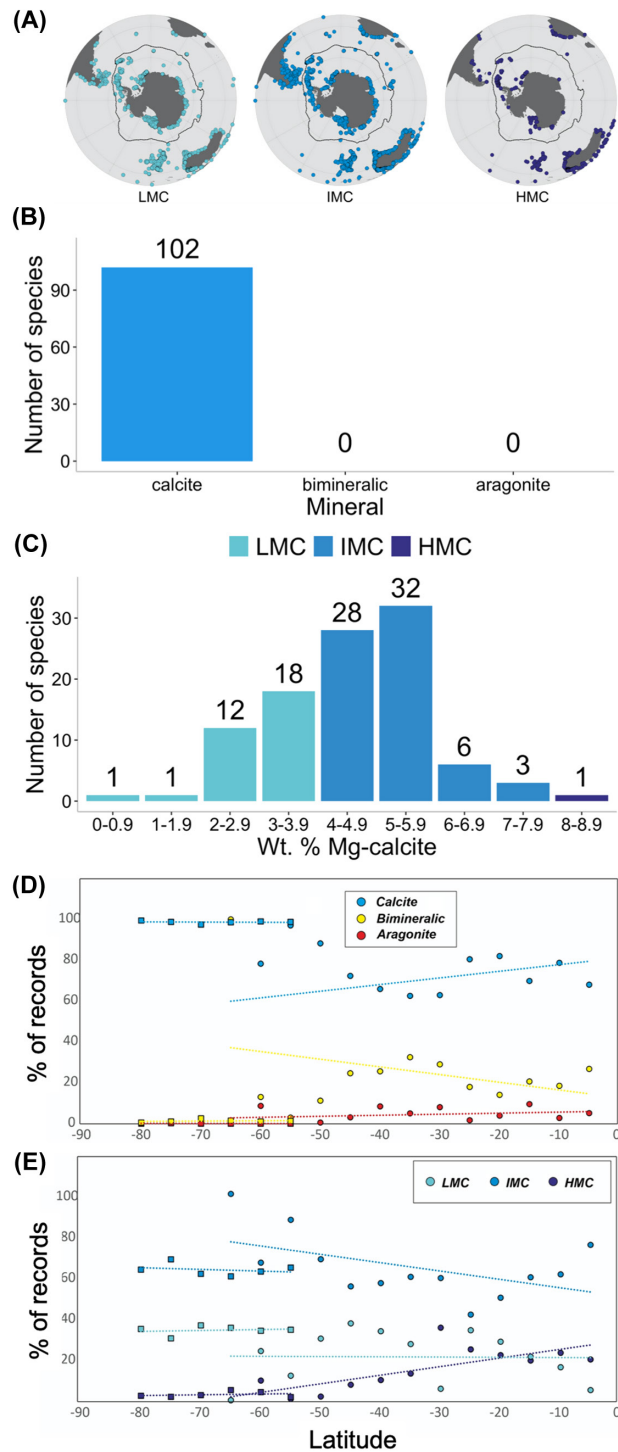


Figure 4. Distribution patterns of the mineral type and of the skeletal Mg-calcite of bryozoans in the Southern Hemisphere. (A) Maps of the Southern Ocean and neighbouring regions showing the Polar Front (PF; black line) and the distribution patterns of Mg-calcite in bryozoan skeletons; Frequency distributions for mineral type (B) and (C) skeletal Mg-calcite in 1415 specimens belonging to 102 species from the Southern Ocean; Relationships between latitude (D) and (E) mineralogical composition in the Southern Hemisphere. LMC: low Mg-calcite; IMC: intermediate Mg-calcite; HMC: high Mg-calcite. South of PF (squares): Calcite= $R^2=0.0166$ ,  $p=0.81$ ,  $y=98 - 0.009X$ ; Bimineralic= $R^2=0.0334$ ,  $p=0.73$ ,  $y=2.2+0.013X$ ; Aragonite= $R^2=0.1543$ ,  $p=0.44$ ,  $y=-0.24 - 0.0041X$ . North of PF (circles): Calcite= $R^2=0.0743$ ,  $p=0.37$ ,  $y=81+0.33X$ ; Bimineralic= $R^2=0.0957$ ,  $p=0.3$ ,  $y=13 - 0.38X$ ; Aragonite= $R^2=0.0831$ ,  $p=0.34$ ,  $y=6.1+0.051X$ . South of PF (squares): LMC= $R^2=0.0387$ ,  $p=0.71$ ,  $y=37+0.045X$ ; IMC= $R^2=0.0698$ ,  $p=0.62$ ,  $y=58 - 0.081X$ ; HMC= $R^2=0.0634$ ,  $p=0.63$ ,  $y=5.2+0.036X$ . North of PF (circles): LMC= $R^2=0.0004$ ,  $p=0.95$ ,  $y=21 - 0.012X$ ; IMC= $R^2=0.2571$ ,  $p=0.077$ ,  $y=50 - 0.41X$ ; HMC= $R^2=0.5802$ ,  $p=0.0025$ ,  $y=29+0.42X$ .



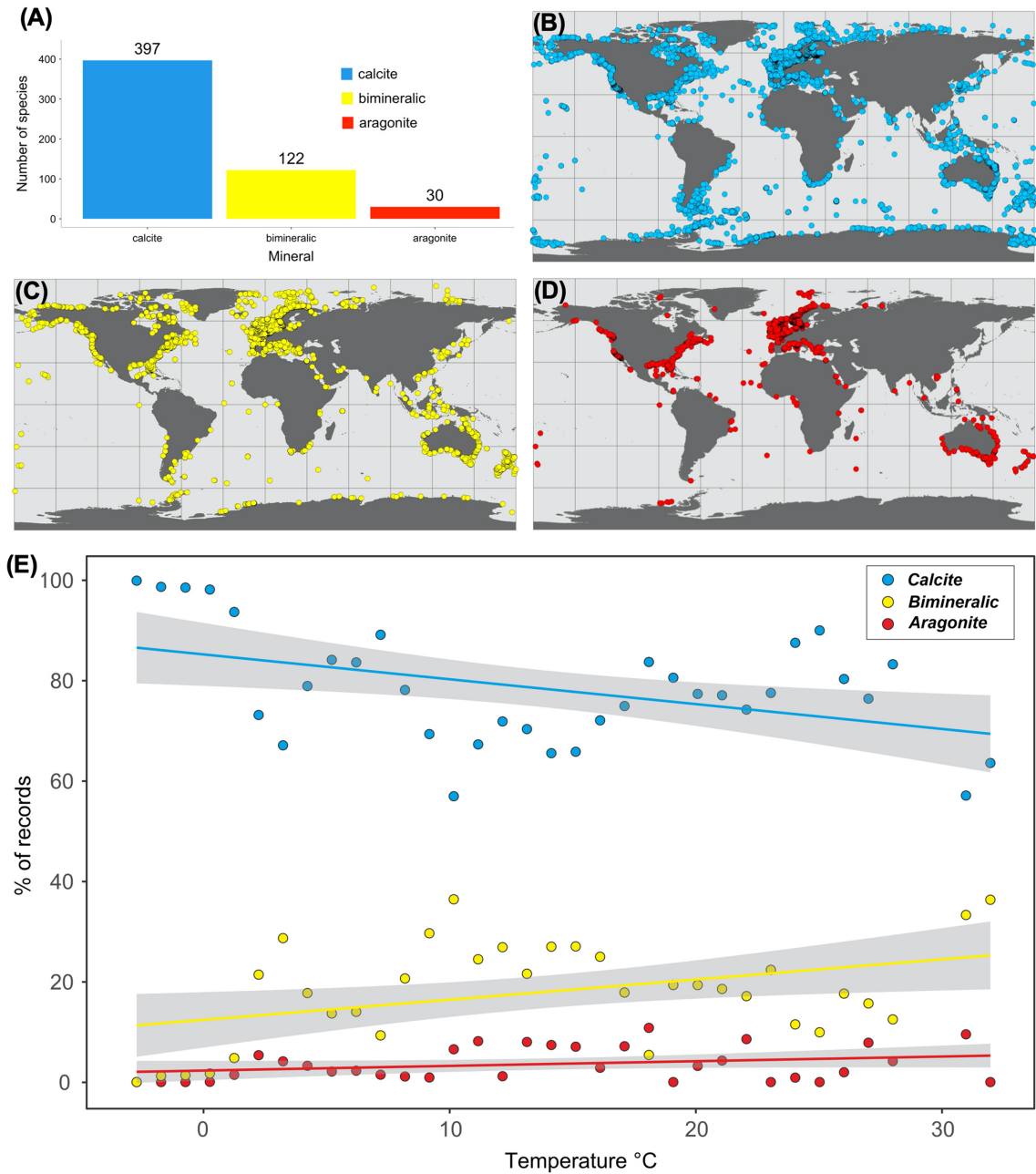


Figure 5. Global distribution patterns of the mineral type of bryozoans. (A) Global frequency distributions for mineral type; (B) global distribution patterns of calcite (blue), (C) bimineralic (yellow) and (D) aragonite (red); (E) relationships between seawater temperature and mineral type in the Southern Hemisphere. Shading bands represent standard errors on linear regressions. Calcite =  $R^2 = 0.1882$ ,  $p = 0.01$ ,  $y = 85 - 0.49X$ ; Bimineralic =  $R^2 = 0.1648$ ,  $p = 0.017$ ,  $y = 13 + 0.4X$ ; Aragonite =  $R^2 = 0.079$ ,  $p = 0.11$ ,  $y = 2.3 + 0.092X$ .

(Fig. 5E). The lack of a significant increase in aragonite occurrence records with increasing temperature ( $R^2 = 0.079$ ;  $p = 0.11$ ) is potentially due to a lack of published mineralogical studies of recent bryozoans from the tropics, where most species with aragonitic skeletons occur (Taylor et al. 2009, 2016). However, species with aragonitic skeletons are absent from seas with temperatures of zero degrees centigrade or below, indicating that this is some sort of temperature threshold or limit for aragonitic species.

In addition, two cosmopolitan aragonitic species, *Membranipora membranacea*, which had high occurrence records (6759), and *Hippothoa divaricata*, which had some Antarctic occurrence records ( $n = 21$ ), could mask the general trend (Figuerola et al. 2022). These species could also switch in mineralogy in higher latitudes, although they were not found below zero degrees Celsius. Some mineralogical analyses of *M. membranacea* recovered calcite (Taylor et al. 2009), although it is not clear if it is due to taxonomic

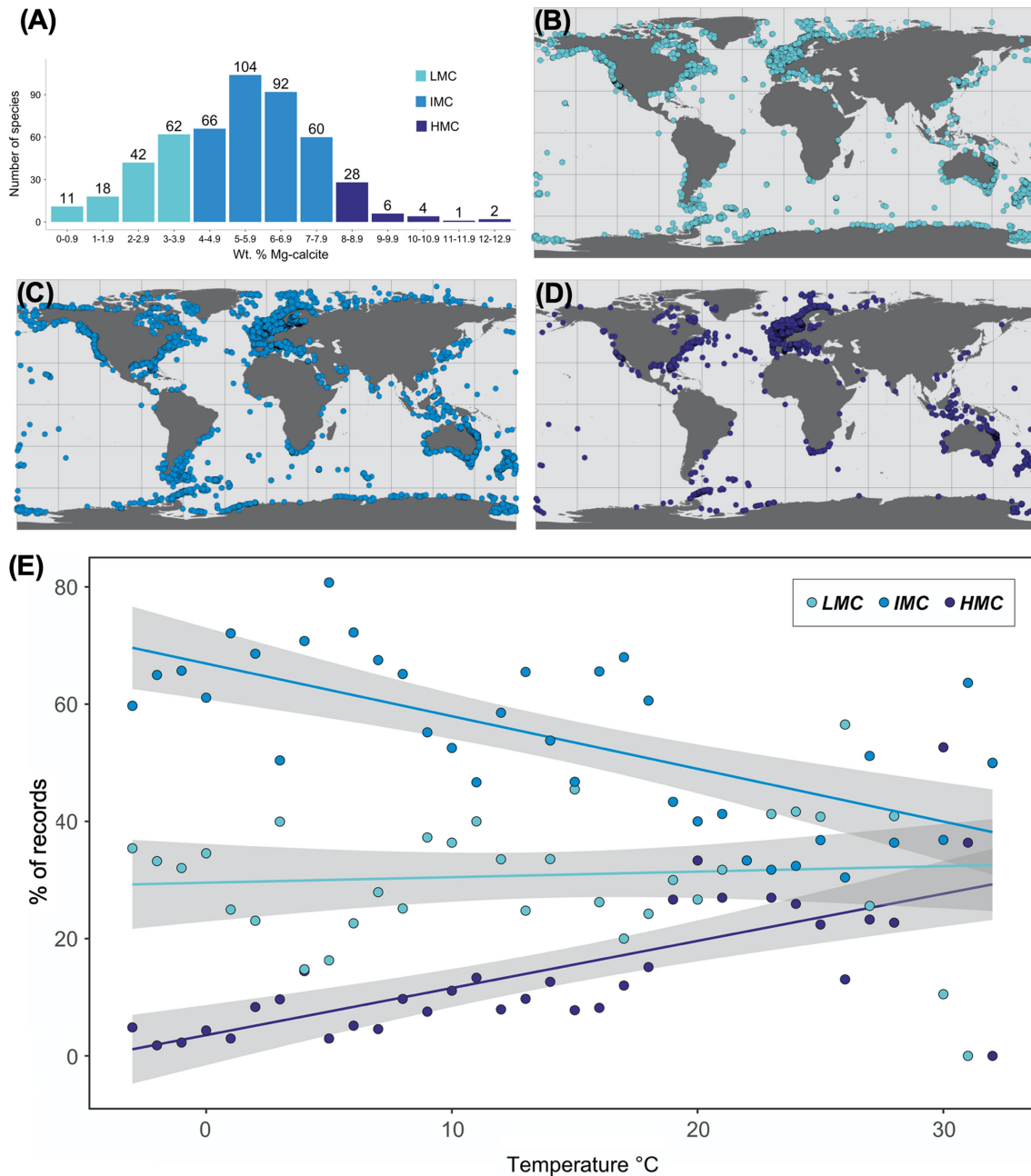


Figure 6. Global distribution patterns of the skeletal Mg-calcite of bryozoans. (A) Global frequency distributions for skeletal Mg-calcite; (B) global distribution patterns of low Mg-calcite (LMC), (C) intermediate Mg-calcite (IMC) and (D) high Mg-calcite (HMC; red); (E) relationships between seawater temperature and mineralogical composition in the Southern Hemisphere. Shading bands represent standard errors on linear regressions. LMC= $R^2=0.0067$ ,  $p=0.62$ ,  $y=30+0.094X$ ; IMC= $R^2=0.4488$ ,  $p=1.1 \times 10^{-05}$ ,  $y=67 - 0.9X$ ; HMC= $R^2=0.4828$ ,  $p=3.6 \times 10^{-06}$ ,  $y=3.5+0.8X$ .

misidentification. Interestingly, the only Antarctic occurrence records of *H. divaricata* are from the western Antarctic Peninsula, where the water is warmer than other Antarctic regions. We thus suggest that zero degrees Celsius could be a better cut off point, above which aragonite does not show a significant trend towards the equator. However, further taxonomic studies are needed to confirm the identification of this species. It should be also taken into account that our analyses

make the assumption that species do not switch mineralogy, although it has been found in some bryozoan species (Smith and Girvan 2010), and might impact some of our findings.

Mg-calcite remained low and constant south of the Polar Front and significantly increased towards lower latitudes (HMC  $R^2=0.58$ ;  $p=0.003$ ) and with increasing seafloor water temperatures (HMC  $R^2=0.48$ ;  $p < 0.001$ ), consistent with our hypothesis that seawater temperature influence

on bimineralization seems to affect the spatial distribution of bryozoans. For the first time we thus provide evidence that seafloor water temperature is likely a significant driver influencing mineralogical composition in bryozoans at a global scale, with an increase of HMC and bimineralic species in warmer waters. Previous studies, lacking an assessment of temperature, revealed an inverse correlation between Mg-calcite and latitude in different calcifying marine invertebrates (Andersson et al. 2008, McClintock et al. 2011, Duquette et al. 2018a). For instance, this general pattern was observed in echinoderm species with LMC skeletons only found in Antarctica although most species have HMC skeletons (Duquette et al. 2018a, Figuerola et al. 2021). Smith et al. (2016) also found a similar trend in different life stages and nine skeletal elements of echinoids. Other taxa also have LMC shells at higher latitudes such as Antarctic brachiopods (Barnes and Peck 1996). In the case of bryozoans, a latitudinal gradient in cheilostome mineralogy, in which aragonite and Mg-calcite increase towards the tropics, was also observed (Taylor et al. 2009, Krzeminska et al. 2016, Piwoni-Piórewicz et al. 2019). Kuklinski and Taylor (2008, 2009) also compared congeneric species across a latitudinal transect and corroborated a shift towards aragonitic and bimineralic skeletons from the Arctic into lower latitudes. Our assessment of latitudinal patterns also provide support for the viability of using latitudinal gradients to infer bryozoan species' responses to seawater temperature although more tropical species should be analysed mineralogically to confirm this hypothesis.

Our data may reflect several adaptive advantages of secreting monomineralic calcite and less soluble  $\text{CaCO}_3$  mineral phases (e.g. LMC skeletons) in cold waters bryozoans such as more rapid secretion of large zooids/colonies, more energetically efficient skeleton secretion and reduction in skeleton dissolution as previously suggested for Arctic bryozoans (Kuklinski and Taylor 2009). Consistent with the high energetic costs to maintain calcified skeletons, especially those with HMC, in cold waters, a decrease of skeletal investment with latitude and decreasing temperature has been also noted in several taxa such as gastropods and echinoids (Watson et al. 2017). Globally, an increase of bryozoans depositing stable carbonate minerals such as calcite and LMC is thus expected as previously suggested by Andersson et al. (2008).

The energetic cost of calcification in cold waters may also lead to compensatory mechanisms in diverse species, likely improving their resilience to global change. For instance, a recent study showed mussels produce thinner shells with a higher organic content in the polar region compared to temperate latitudes (Telesca et al. 2019). Some brachiopod and coral species can also have the ability to form thicker shells and denser skeletons, respectively, under acidified conditions (Cross et al. 2019, Teixidó et al. 2020). However, these changes in the calcification may not be sufficient to overcome impacts of both warming and acidification.

At a local scale, it remains unclear what the effect of seawater temperature and other environmental (e.g. salinity, pH and the seawater Mg/Ca ratio) or biotic factors have on the skeleton of bryozoans. For instance, the expected

positive trends of increasing aragonite or Mg-calcite with seawater temperature were not found in some polar and temperate bryozoan species although the authors argued that the existing variability in seawater temperature might be too low in these instances to significantly affect skeletal Mg-calcite (Loxton et al. 2014a, b, Figuerola et al. 2015, Iglukowska et al. 2020). In addition, local intraspecific and/or interspecific variation was previously found in a range of bryozoan species, which were not related with temperature changes (Loxton et al. 2014a, b, Figuerola et al. 2015, 2019) suggesting other biological and/or local environmental factors remain important. This could be the case of some Antarctic and temperate bryozoan species, which exhibited a decrease in skeletal Mg-calcite at lower salinities (Loxton et al. 2014b, Figuerola et al. 2015). In contrast, Loxton et al. (2014a) did not find any relationship between the skeletal Mg-calcite and salinity in four Antarctic bryozoans. Several studies investigating the effect of temperature and salinity on Mg/Ca ratios in other calcifying groups also revealed interspecific variation. While a positive correlation between salinity and skeletal Mg/Ca ratio was found in some foraminifer and echinoderm species – although Mg/Ca responses to changes in temperature are more strongly (Borremans et al. 2009, Dissard et al. 2010, Hönisch et al. 2013), no correlation with salinity was shown in other foraminifer and echinoderm species (Hermans et al. 2010, Geerken et al. 2018). Further laboratory and field research should thus attempt to tease apart the influence of seawater temperature and other factors such as salinity on bryozoan mineralogy.

### Southern Ocean bellwethers for global change impacts on marine calcifiers

Southern Ocean bryozoans are likely to be particularly vulnerable to global change impacts as most cyclostomes and cheilostomes release lecithotrophic short-lived larvae (Jackson 1986) and may thus not be able to shift their distribution to more favourable habitats. Our findings suggest that the combined effects of ocean warming and acidification may be seen first in HMC species (e.g. *Beania erecta*) inhabiting in Antarctic coastal areas that have rapidly warmed in recent years such as the western Antarctic Peninsula.

Bryozoan species secreting IMC and even LMC skeletons may also be at increased risk to global change in the near-future, as their skeletons could show an increase in Mg-calcite with warmer seawater temperatures (Figuerola et al. 2019). Bryozoan species of the genus *Pentapora* showed an increase of Mg-calcite in parts of the skeleton formed during the summer (Lombardi et al. 2008). Colonies of two common Mediterranean bryozoans, *Myriapora truncata* and *Pentapora fascialis*, also exhibited higher Mg-calcite values when exposed to experimental high temperatures compared to those of control conditions. These differences only approached significance perhaps due to the short time interval of the controlled temperature exposure period (Pagès-Escalà et al. 2018). Skeleton dissolution was also observed in the bryozoan *Jellyella tuberculata* (Bosc 1802), when colonies were exposed



to a combination of reduced pH and elevated temperature, likely due to an increase in levels of skeletal Mg-calcite with increased temperature, making skeletons more susceptible to dissolution at low pH (Swezey et al. 2017). However, these findings contrast with those of Duquette et al. (2018b) who found that a chronic exposure to elevated temperature resulted in a significant reduction in the Mg-calcite of the sea urchin *Lytechinus variegatus*. Clearly, in a big picture, more experimental and in situ studies that combine near-future predicted elevated temperature and reduced pH (Stark et al. 2018, Cummings et al. 2019) are needed to predict the bryozoans that will be ‘winners’ and ‘losers’ a determination that will be particularly important for those species that are key ecosystem engineers. The loss of such key species could lead to a decline of resilience in benthic Antarctic ecosystems.

**Acknowledgements** – We would like to acknowledge the voyage leader, Martin Riddle, the crew and the captain of the RV Aurora Australis. The CAML-CEAMARC cruise of RV Aurora Australis (IPY project no. 53) were supported by the Australian Antarctic Division, the Japanese Science Foundation, the French polar institute IPEV and the Muséum National d’Histoire Naturelle. We thank Dr Steve J. Roberts for helping with the Fig. 5 and 6, Jens Najorka for help with mineralogical analysis and Dr Paul D. Taylor for valuable comments and edits.

**Funding** – The study was supported by National Science Centre Poland (project contracts 2016/23/B/ST10/01936 and 2021/40/C/ST10/00225). BF has received funding from the postdoctoral fellowships programme Beatriu de Pinós funded by the Secretary of Universities and Research (Government of Catalonia) and by the Horizon 2020 programme of research and innovation of the European Union under the Marie Skłodowska-Curie grant agreement no. 801370 (Incorporation grant 2019 BP 00183). This work has been developed in the framework of MedCalRes project Grant PID2021-125323OA-I00 to BF funded by MCIN/AEI/10.13039/501100011033 and by ‘ERDF A way of making Europe’. With the institutional support of the ‘Severo Ochoa Centre of Excellence’ accreditation (CEX2019-000928-S).

## Author contributions

**Blanca Figuerola:** Conceptualization (lead); Data curation (lead); Formal analysis (lead); Investigation (lead); Methodology (equal); Writing – original draft (lead); Writing – review and editing (lead). **Huw J. Griffiths:** Data curation (equal); Formal analysis (equal); Methodology (equal); Writing – review and editing (equal). **Malgorzata Krzeminska:** Data curation (supporting); Investigation (supporting); Methodology (supporting); Writing – review and editing (supporting). **Anna Piwoni-Piorewicz:** Data curation (supporting); Investigation (supporting); Methodology (supporting); Writing – review and editing (supporting). **Anna Iglukowska:** Data curation (supporting); Investigation (supporting); Methodology (supporting); Writing – review and editing (supporting). **Piotr Kuklinski:** Data curation (supporting); Funding acquisition (lead); Investigation (supporting); Methodology (supporting); Writing – review and editing (supporting).

## Transparent peer review

The peer review history for this article is available at <https://publons.com/publon/10.1111/ecog.06381>.

## Data availability statement

Data are available from the Dryad Digital Repository: <https://doi.org/10.5061/dryad.bvq83bkbm> (Figuerola et al. 2022).

## References

- Amante, C. and Eakins, B. 2009. ETOPO1 arc-minute global relief model: procedures, data sources and analysis. – U.S. Dept of Commerce, National Oceanic and Atmospheric Administration, National Environmental Satellite, Data and Information Service, National Geophysical Data Center, Marine Geology and Geophysics Division, <https://purl.fdlp.gov/GPO/gpo441>.
- Amsler, C., McClintock, J., Baker, B. and Zamzow, J. 2010. Habitat choice and predator avoidance by Antarctic amphipods: the roles of algal chemistry and morphology. – *Mar. Ecol. Prog. Ser.* 400: 155–163.
- Andersson, A. J., Mackenzie, F. T. and Bates, N. R. 2008. Life on the margin: implications of ocean acidification on Mg-calcite, high latitude and cold-water marine calcifiers. – *Mar. Ecol. Prog. Ser.* 373: 265–273.
- Barnes, D. K. A. 2018. Blue carbon on polar and subpolar seabeds. – In: Agarwal, R. K. (ed.), *Carbon capture, utilization and sequestration*. IntechOpen, pp. 37–56. doi: [10.5772/intechopen.78237](https://doi.org/10.5772/intechopen.78237).
- Barnes, D. K. A. and Kuklinski, P. 2010. Bryozoans of the Weddell Sea continental shelf, slope and abyss: did marine life colonize the Antarctic shelf from deep water, outlying islands or in situ refugia following glaciations? – *J. Biogeogr.* 37: 1648–1656.
- Barnes, D. K. A. and Peck, L. S. 1996. Epibiotas and attachment substrata of deep-water brachiopods from Antarctica and New Zealand. – *Phil. Trans. R. Soc. B* 351: 677–687.
- Bax, N. N. and Cairns, S. D. 2014. Stylasteridae (Cnidaria; Hydrozoa). – In: DeBroyer, C., Koubbi, P., Griffiths, H. J. and Raymond, B. (eds), *Biogeographic Atlas of the Southern Ocean*. SCAR, pp. 107–112. <http://repository.si.edu/xmlui/handle/10088/22593>.
- Bock, P. E. and Gordon, D. P. 2013. Phylum Bryozoa Ehrenberg, 1831. – *Zootaxa* 3703: 67–74.
- Bone, Y. and James, N. P. 1993. Bryozoans as carbonate sediment producers on the cool-water Lacedpede Shelf, southern Australia. – *Sediment. Geol.* 86: 247–271.
- Borisenko, Y. and Gontar, V. I. 1991. Biogeochemistry of skeletons of coldwater Bryozoa. – *Biol. Morya* 1: 80–90.
- Borremans, C., Hermans, J., Baillon, S., André, L. and Dubois, P. 2009. Salinity effects on the Mg/Ca and Sr/Ca in starfish skeletons and the echinoderm relevance for paleoenvironmental reconstructions. – *Geology* 37: 351–354.
- Chang, V. T.-C., Williams, R. J. P., Makishima, A., Belshaw, N. S. and O’Nions, R. K. 2004. Mg and Ca isotope fractionation during CaCO<sub>3</sub> biomineralisation. – *Biochem. Biophys. Res. Commun.* 323: 79–85.
- Chave, K. E. 1954. Aspects of the biogeochemistry of magnesium 1. Calcareous marine organisms. – *J. Geol.* 62: 266–283.



- Clarke, A., Griffiths, H. J., Barnes, D. K. A., Meredith, M. P. and Grant, S. M. 2009. Spatial variation in seabed temperatures in the Southern Ocean: implications for benthic ecology and biogeography. – *J. Geophys. Res. Biogeosci.* 114: G03003. doi: [10.1029/2008JG000886](https://doi.org/10.1029/2008JG000886)
- Cohen, A. L. and Branch, G. M. 1992. Environmentally controlled variation in the structure and mineralogy of *Patella granularis* shells from the coast of southern Africa: implications for palaeotemperature assessments. – *Palaeogeogr. Palaeoclimatol. Palaeoecol.* 91: 49–57.
- Conrad, C. J. and Lovenduski, N. S. 2015. Climate-driven variability in the Southern Ocean carbonate system. – *J. Clim.* 28: 5335–5350.
- Cross, E. L., Harper, E. M. and Peck, L. S. 2019. Thicker shells compensate extensive dissolution in brachiopods under future ocean acidification. – *Environ. Sci. Technol.* 53: 5016–5026.
- Cummings, V. J., Barr, N. G., Budd, R. G., Marriott, P. M., Safi, K. A. and Lohrer, A. M. 2019. In situ response of Antarctic under-ice primary producers to experimentally altered pH. – *Sci. Rep.* 9: 6069.
- Davis, K. J., Dove, P. M. and De Yoreo, J. J. 2000. The role of  $Mg^{2+}$  as an impurity in calcite growth. – *Science* 290: 1134–1137.
- De Broyer, C. D., Danis, B. and Editors, S. T. 2011. How many species in the Southern Ocean? Towards a dynamic inventory of the Antarctic marine species. – *Deep-Sea Res. Part II* 58: 5–17.
- De Broyer, D., Clarke, A., Koubbi, P., Pakhomov, E., Scott, F., Vanden Berghe, E. and Danis, B. 2022. Register of Antarctic marine species. – [www.marinespecies.org/rams](http://www.marinespecies.org/rams), accessed on 26 January 2022.
- Dissard, D., Nehrke, G., Reichart, G. J. and Bijma, J. 2010. The impact of salinity on the Mg/Ca and Sr/Ca ratio in the benthic foraminifera *Ammonia tepida*: results from culture experiments. – *Geochim. Cosmochim. Acta* 74: 928–940.
- Duquette, A., Halanych, K. M., Angus, R. A. and McClintock, J. B. 2018a. Inter and intraspecific comparisons of the skeletal Mg/Ca ratios of high latitude Antarctic echinoderms. – *Antarctic Sci.* 30: 160–169.
- Duquette, A., Vohra, Y. K., McClintock, J. B. and Angus, R. A. 2018b. Near-future temperature reduces Mg/Ca ratios in the major skeletal components of the common subtropical sea urchin *Lytechinus variegatus*. – *J. Exp. Mar. Biol. Ecol.* 509: 1–7.
- Fabry, V. J. 2008. Marine calcifiers in a high- $CO_2$  ocean. – *Science* 320: 1020–1022.
- Fabry, V., McClintock, J., Mathis, J. and Grebmeier, J. 2009. Ocean acidification at high latitudes: the bellwether. – *Oceanography* 22: 160–171.
- Figuerola, B., Ballesteros, M., Monleón-Getino, T. and Avila, C. 2012. Spatial patterns and diversity of bryozoan communities from the Southern Ocean: South Shetland Islands, Bouvet Island and eastern Weddell Sea. – *Syst. Biodivers.* 10: 109–123.
- Figuerola, B., Kuklinski, P. and Taylor, P. D. 2015. Depth patterns in Antarctic bryozoan skeletal Mg-calcite: can they provide an analogue for future environmental changes? – *Mar. Ecol. Prog. Ser.* 540: 109–120.
- Figuerola, B., Barnes, D. K. A., Brickle, P. and Brewin, P. E. 2017. Bryozoan diversity around the Falkland and South Georgia Islands: overcoming Antarctic barriers. – *Mar. Environ. Res.* 126: 81–94.
- Figuerola, B., Gordon, D. P. and Cristobo, J. 2018. New deep Cheilostomata (Bryozoa) species from the Southwestern Atlantic: shedding light in the dark. – *Zootaxa* 4375: 211–249.
- Figuerola, B., Gore, D. B., Johnstone, G. and Stark, J. S. 2019. Spatio-temporal variation of skeletal Mg-calcite in Antarctic marine calcifiers. – *PLoS One* 14: e0210231.
- Figuerola, B., Hancock, A. M., Bax, N., Cummings, V. J., Downey, R., Griffiths, H. J., Smith, J. and Stark, J. S. 2021. A review and meta-analysis of potential impacts of ocean acidification on marine calcifiers from the Southern Ocean. – *Front. Mar. Sci.* 8: 584445.
- Figuerola, B., Griffiths, H. J., Krzeminska, M., Piwoni-Piorewicz, A., Iglukowska, A. and Kuklinski, P. 2022. Data from: Temperature as a likely driver shaping global patterns in mineralogical composition in bryozoans: implications for marine calcifiers under global change. – Dryad Digital Repository, <https://doi.org/10.5061/dryad.bvq83bkbm>.
- GBIF (n.d.). GBIF.org (28 January 2022) GBIF Occurrence Download <https://doi.org/10.15468/dl.pkvtkg>.
- Geerken, E., de Nooijer, L. J., van Dijk, I. and Reichart, G.-J. 2018. Impact of salinity on element incorporation in two benthic foraminiferal species with contrasting magnesium contents. – *Biogeosciences* 15: 2205–2218.
- Hancock, A. M., King, C. K., Stark, J. S., McMinn, A. and Davidson, A. T. 2020. Effects of ocean acidification on Antarctic marine organisms: a meta-analysis. – *Ecol. Evol.* 10: 4495–4514.
- Hauri, C., Friedrich, T. and Timmermann, A. 2016. Abrupt onset and prolongation of aragonite undersaturation events in the Southern Ocean. – *Nat. Clim. Change* 6: 172–176.
- Hayward, P. 1995. Antarctic cheilostomatous bryozoa. – Oxford Univ. Press.
- Hermans, J., Borremans, C., Willenz, P., André, L. and Dubois, P. 2010. Temperature, salinity and growth rate dependences of Mg/Ca and Sr/Ca ratios of the skeleton of the sea urchin *Paracentrotus lividus* (Lamarck): an experimental approach. – *Mar. Biol.* 157: 1293–1300.
- Hönisch, B., Allen, K. A., Lea, D. W., Spero, H. J., Eggins, S. M., Arbuszewski, J., deMenocal, P., Rosenthal, Y., Russell, A. D. and Elderfield, H. 2013. The influence of salinity on Mg/Ca in planktic foraminifers – evidence from cultures, core-top sediments and complementary  $\delta^{18}O$ . – *Geochim. Cosmochim. Acta* 121: 196–213.
- Iglukowska, A., Krzeminska, M., Renaud, P. E., Berge, J., Hop, H. and Kuklinski, P. 2020. Summer and winter  $MgCO_3$  levels in the skeletons of Arctic bryozoans. – *Mar. Environ. Res.* 162: 105166.
- IPCC 2014. Synthesis report in climate change 2014: contribution of working groups I, II and III to the fifth assessment report of the Intergovernmental Panel on Climate Change. – IPCC.
- IPCC 2019. Summary for policymakers. – In: Pörtner, H.-O., Roberts, D. C., Masson-Delmotte, V., Zhai, P., Tignor, M., Poloczanska, E., Mintenbeck, K., Alegria, A., Nicolai, M., Okem, A., Petzold, J., Rama, B. and Weyer, N. M. (eds), Special report on the ocean and cryosphere in a changing climate. IPCC.
- Jackson, J. B. C. 1986. Modes of dispersal of clonal benthic invertebrates: consequences for species' distributions and genetic structure of local populations. – *Bull. Mar. Sci.* 39: 588–606.
- Kołbuk, D., Dubois, P., Stolarski, J. and Gorzelaka, P. 2019. Effects of seawater chemistry ( $Mg^{2+}/Ca^{2+}$  ratio) and diet on the skeletal Mg/Ca ratio in the common sea urchin *Paracentrotus lividus*. – *Mar. Environ. Res.* 145: 22–26.
- Kołbuk, D., Dubois, P., Stolarski, J. and Gorzelaka, P. 2021. Impact of seawater  $Mg^{2+}/Ca^{2+}$  on Mg/Ca of asterozoan skeleton – evidence from culturing and the fossil record. – *Chem. Geol.* 584: 120557.

- Kroeker, K. J., Kordas, R. L., Crim, R., Hendriks, I. E., Ramajo, L., Singh, G. S., Duarte, C. M. and Gattuso, J.-P. 2013. Impacts of ocean acidification on marine organisms: quantifying sensitivities and interaction with warming. – *Global Change Biol.* 19: 1884–1896.
- Krzeminska, M., Kuklinski, P., Najorka, J. and Iglukowska, A. 2016. Skeletal mineralogy patterns of Antarctic bryozoa. – *J. Geol.* 124: 411–422.
- Krzemińska, M., Piwoni-Piórewicz, A., Shunatova, N., Duczmal-Czernikiewicz, A., Muszyński, A., Kubiak, M. and Kukliński, P. 2022. Bryozoan carbonate skeletal geochemical composition in the White Sea compared with neighbouring seas. – *Mar. Environ. Res.* 173: 105542.
- Kuklinski, P. and Taylor, P. D. 2008. Are bryozoans adapted for living in the Arctic? – In: Hageman, S. J., Key, M. M. and Winston, J. E. (eds), *Bryozoan studies 2007*, proceedings of the 14th international bryozoology association conference, Boone, North Carolina, 1–8 July 2007. Virginia Museum of Natural History, Memoir, Special Publication Number, 15, pp. 101–110.
- Kuklinski, P. and Taylor, P. D. 2009. Mineralogy of Arctic bryozoan skeletons in a global context. – *Facies* 55: 489–500.
- Lebrato, M., Andersson, A. J., Ries, J. B., Aronson, R. B., Lamare, M. D., Koeve, W., Oschlies, A., Iglesias-Rodriguez, M. D., Thatje, S., Amsler, M., Vos, S. C., Jones, D. O. B., Ruhl, H. A., Gates, A. R. and McClintock, J. B. 2016. Benthic marine calcifiers coexist with  $\text{CaCO}_3$ -undersaturated seawater worldwide. – *Global Biogeochem. Cycles* 30: 1038–1053.
- Lebrato, M., Garbe-Schönberg, D., Müller, M. N., Blanco-Ameijeiras, S., Feely, R. A., Lorenzoni, L., Molinero, J. C., Bremer, K., Jones, D. O. B., Iglesias-Rodriguez, D., Greeley, D., Lamare, M. D., Paulmier, A., Graco, M., Cartes, J., Barcelos E Ramos, J., de Lara, A., Sanchez-Leal, R., Jimenez, P., Paparazzo, F. E., Hartman, S. E., Westernströer, U., Küter, M., Benavides, R., da Silva, A. F., Bell, S., Payne, C., Olafsdottir, S., Robinson, K., Jantunen, L. M., Korablev, A., Webster, R. J., Jones, E. M., Gilg, O., Bailly du Bois, P., Beldowski, J., Ashjian, C., Yahia, N. D., Twining, B., Chen, X. G., Tseng, L. C., Hwang, J. S., Dahms, H. U. and Oschlies, A. 2020. Global variability in seawater Mg:Ca and Sr:Ca ratios in the modern ocean. – *Proc. Natl Acad. Sci. USA* 117: 22281–22292.
- Lebrato, M., McClintock, J. B., Amsler, M. O., Ries, J. B., Egilisdottir, H., Lamare, M., Amsler, C. D., Challenger, R. C., Schram, J. B., Mah, C. L., Cuce, J. and Baker, B. J. 2013. From the Arctic to the Antarctic: the major, minor and trace elemental composition of echinoderm skeletons. – *Ecology* 94: 1434–1434.
- Lombardi, C., Cocito, S., Hiscock, K., Occhipinti-Ambrogi, A., Setti, M. and Taylor, P. D. 2008. Influence of seawater temperature on growth bands, mineralogy and carbonate production in a bioconstructional bryozoan. – *Facies* 54: 333–342.
- Lowenstam, H. A. 1954. Environmental relations of modification compositions of certain carbonate secreting marine invertebrates. – *Proc. Natl Acad. Sci. USA* 40: 39–48.
- Lowenstam, H. A. and Weiner, S. 1989. *On biomineralization*. – Oxford Univ. Press.
- Loxton, J., Jones, M. S., Najorka, J., Smith, A. M. and Porter, J. S. 2018. Skeletal carbonate mineralogy of Scottish bryozoans. – *PLoS One* 13: e0197533.
- Loxton, J., Kuklinski, P., Barnes, D. K. A., Najorka, J., Jones, M. S. and Porter, J. S. 2014a. Variability of Mg-calcite in Antarctic bryozoan skeletons across spatial scales. – *Mar. Ecol. Prog. Ser.* 507: 169–180.
- Loxton, J., Kuklinski, P., Najorka, J., Jones, M. S. and Porter, J. S. 2014b. Variability in the skeletal mineralogy of temperate bryozoans: the relative influence of environmental and biological factors. – *Mar. Ecol. Prog. Ser.* 510: 45–57.
- Loxton, J., Kuklinski, P., Mair, J. M., Jones, M. S. and Porter, J. S. 2013. Patterns of magnesium-calcite distribution in the skeleton of some polar bryozoan species mineralogy of polar bryozoan skeletons. – In: Ernst, A., Schäfer, P. and Scholz, J. (eds), *Bryozoan studies 2010*, Vol. 143. Springer, pp. 169–185.
- Mackenzie, F. T., Bischoff, W. D., Bishop, F. C., Loijens, M., Schoonmaker, J. and Wollast, R. 1983. Magnesian calcites: low-temperature occurrence, solubility and solid-solution behavior. – In: Reeder, R. (ed.), *Carbonates: mineralogy and chemistry. Reviews in mineralogy*. Mineralogical Society of America, pp. 97–143.
- McClintock, J. B., Amsler, M. O., Angus, R. A., Challenger, R. C., Schram, J. B., Amsler, C. D., Mah, C. L., Cuce, J., Baker, B. J., The, S. and September, N. 2011. The Mg-Calcite composition of Antarctic echinoderms: important implications for predicting the impacts of ocean acidification. – *J. Geol.* 119: 457–466.
- McClintock, J. B., Amsler, R., Angus, R., McClintock, F., Genevrière, A.-M. and Lebrato, M. 2017. A comparison of  $\text{MgCO}_3$  in individual sub-components of major skeletal structures of the common temperate sea urchin *Paracentrotus lividus*. – *Cahiers Mar. Biol.* 58: 99–106.
- McNeil, B. I. and Matear, R. J. 2008. Southern Ocean acidification: a tipping point at 450-ppm atmospheric  $\text{CO}_2$ . – *Proc. Natl Acad. Sci. USA* 105: 18860–18864.
- Mitric, M., Kremenovic, A., Dimitrijevic, R. and Rodic, D. 1997. Structure and microstructure of  $\text{Sm}_x\text{Y}_{2-x}\text{O}_3$ . – *Solid State Ionics* 101–103: 495–501.
- Moore, J. K., Abbott, M. R. and Richman, J. G. 1999. Location and dynamics of the Antarctic Polar Front from satellite sea surface temperature data. – *J. Geophys. Res. Oceans* 104: 3059–3073.
- Mucci, A. 1983. The solubility of calcite and aragonite in seawater at various salinities, temperatures and one atmosphere total pressure. – *Am. J. Sci.* 283: 780–799.
- Orr, J. C., Fabry, V. J., Aumont, O., Bopp, L., Doney, S. C., Feely, R. A., Gnanadesikan, A., Gruber, N., Ishida, A., Joos, F., Key, R. M., Lindsay, K., Maier-Reimer, E., Matear, R., Monfray, P., Mouchet, A., Najjar, R. G., Plattner, G.-K., Rodgers, K. B., Sabine, C. L., Sarmiento, J. L., Schlitzer, R., Slater, R. D., Totterdell, I. J., Weirig, M., Yamanaka, Y. and Yool, A. 2005. Anthropogenic ocean acidification over the twenty-first century and its impact on calcifying organisms. – *Nature* 437: 681–686.
- Orr, R. J. S., Di Martino, E. D., Ramsfjell, M. H., Gordon, D. P., Berning, B., Chowdhury, I., Craig, S., Cumming, R. L., Figuerola, B., Florence, W., Harmelin, J.-G., Hirose, M., Huang, D., Jain, S. S., Jenkins, H. L., Kotenko, O. N., Kuklinski, P., Lee, H. E., Madurell, T., McCann, L., Mello, H. L., Obst, M., Ostrovsky, A. N., Paulay, G., Porter, J. S., Shunatova, N. N., Smith, A. M., Souto-Derungs, J., Vieira, L. M., Voje, K. L., Waeschenbach, A., Zągoršek, K., Warnock, R. C. M. and Liow, L. H. 2022. Paleozoic origins of cheilostome bryozoans and their parental care inferred by a new genome-skimmed phylogeny. – *Sci. Adv.* 8: eabm7452.
- Pagès-Escollà, M., Hereu, B., Garrabou, J., Montero-Serra, I., Gori, A., Gómez-Gras, D., Figuerola, B. and Linares, C. 2018. Divergent responses to warming of two common co-occurring Mediterranean bryozoans. – *Sci. Rep.* 8: 17455.
- Peck, L. 2018. Antarctic marine biodiversity: adaptations, environments and responses to change. – In: Hawkins, S. J., Evans, A.

- J., Dale, A. C., Firth, L. B. and Smith, I. P. (eds), *Oceanography and marine biology: an annual review*, no. 56, Vol. 56. Taylor and Francis, pp. 105–236.
- Peck, L. S. 2001. Ecophysiology of Antarctic marine ectotherms: limits to life. – *Polar Biol.* 25: 31–40.
- Peck, L. S. 2005. Prospects for survival in the Southern Ocean: vulnerability of benthic species to temperature change. – *Antarctic Sci.* 17: 497–507.
- Piwoni-Piórewicz, A., Krzemińska, M., Iglukowska, A., Jens, N. and Kukliński, P. 2019. Skeletal mineralogy patterns of Bryozoa from the Aleutian Islands in the context of revealing a global pattern in bryozoan skeletal mineralogy. – *Bryozoan Studies* 17.
- Poluzzi, A. and Sartori, R. 1975. Report on the carbonate mineralogy of Bryozoa. Documents des Laboratoires de Geologie de la Faculte des Sciences de Lyon. – Hors Serie 3: 193–210.
- Ries, J. B. 2010. Review: Geological and experimental evidence for secular variation in seawater Mg/Ca (calcite-aragonite seas) and its effects on marine biological calcification. – *Biogeosciences* 7: 2795–2849.
- Rucker, J. B. and Carver, R. E. 1969. A survey of the carbonate mineralogy of cheilostome Bryozoa. – *J. Paleontol.* 43: 791–799.
- Santagata, S., Ade, V., Mahon, A. R., Wisocki, P. A. and Halanych, K. M. 2018. Compositional differences in the habitat-forming bryozoan communities of the Antarctic shelf. – *Front. Ecol. Evol.* 6: 116.
- Schloerke, B., Briatte, F., Joseph, bigbeardesktop, elbamos, Crowley, J., Cook, D., Ibanez, E., Sievert, C., Ogden, K., Ross, Wallace, E., Gilligan, J., Spiller, T., Thoen, E., Richter, J., Toomet, O., Beck, M. W., Sergushichev, A., Valdez, A. C., Codetrainee, Le Pennec, E., Eraslan, G., Hofmann, H., Couch, S. P., The Gitter Badger, Lepori, V., Xie, Y., Bolker, B. and ewenharrison 2021. ggobi/ggally: V2.1.2. – Zenodo, <https://doi.org/10.5281/zenodo.5009047>.
- Smith, A. M. and Clark, D. E. 2010. Skeletal carbonate mineralogy of bryozoans from Chile: an independent check of phylogenetic patterns. – *PALAIOS* 25: 229–233.
- Smith, A. M. and Girvan, E. 2010. Understanding a bimineralic bryozoan: skeletal structure and carbonate mineralogy of *Odonionella cyclops* (Foveolariidae: Cheilostomata: Bryozoa) in New Zealand. – *Palaeogeogr. Palaeoclimatol. Palaeoecol.* 289: 113–122.
- Smith, A. M., Clark, D. E., Lamare, M. D., Winter, D. J. and Byrne, M. 2016. Risk and resilience: variations in magnesium in echinoid skeletal calcite. – *Mar. Ecol. Prog. Ser.* 561: 1–16.
- Smith, A. M., Key, M. M. and Gordon, D. P. 2006. Skeletal mineralogy of bryozoans: taxonomic and temporal patterns. – *Earth-Sci. Rev.* 78: 287–306.
- Smith, A. M., Nelson, C. S. and Spencer, H. G. 1998. Skeletal carbonate mineralogy of New Zealand bryozoans. – *Mar. Geol.* 151: 27–46.
- Stark, J. S., Roden, N. P., Johnstone, G. J., Milnes, M., Black, J. G., Whiteside, S., Kirkwood, W., Newbery, K., Stark, S., Van Ooijen, E., Tilbrook, B., Peltzer, E. T., Berry, K. and Roberts, D. 2018. Carbonate chemistry of an in-situ free-ocean CO<sub>2</sub> enrichment experiment (antFOCE) in comparison to short term variation in Antarctic coastal waters. – *Sci. Rep.* 8: 2816.
- Steger, K. K. and Smith, A. M. 2005. Carbonate mineralogy of free-living bryozoans (Bryozoa: Otionellidae), Otago shelf, southern New Zealand. – *Palaeogeogr. Palaeoclimatol. Palaeoecol.* 218: 195–203.
- Steig, E. J., Schneider, D. P., Rutherford, S. D., Mann, M. E., Comiso, J. C. and Shindell, D. T. 2009. Warming of the Antarctic ice-sheet surface since the 1957 International Geophysical Year. – *Nature* 457: Article 7228.
- Swezey, D. S., Bean, J. R., Ninokawa, A. T., Hill, T. M., Gaylord, B. and Sanford, E. 2017. Interactive effects of temperature, food and skeletal mineralogy mediate biological responses to ocean acidification in a widely distributed bryozoan. – *Proc. R. Soc. B* 284: 20162349.
- Taylor, P. D. 2020. Bryozoan paleobiology. – Wiley, [www.wiley.com/en-us/Bryozoan+Paleobiology-p-9781118455005](http://www.wiley.com/en-us/Bryozoan+Paleobiology-p-9781118455005).
- Taylor, P. D. and Di Martino, E. 2014. Why is the tropical Cenozoic fossil record so poor for bryozoans? – *Studi Trent. Sci. Nat.* 94: 249–257.
- Taylor, P. D., James, N. P., Bone, Y., Kukliński, P. and Kyser, T. K. 2009. Evolving mineralogy of cheilostome bryozoans. – *Palaios* 24: 440–452.
- Taylor, P. D., Lombardi, C. and Cocito, S. 2015. Biomineralization in bryozoans: present, past and future. – *Biol. Rev.* 90: 1118–1150.
- Taylor, P. D., Tan Shau-Hwai, A., Kudryavstev, A. B. and Schopf, J. W. 2016. Carbonate mineralogy of a tropical bryozoan biota and its vulnerability to ocean acidification. – *Mar. Biol. Res.* 12: 776–780.
- Teixidó, N., Caroselli, E., Alliouane, S., Ceccarelli, C., Comeau, S., Gattuso, J., Fici, P., Micheli, F., Mirasole, A., Monismith, S. G., Munari, M., Palumbi, S. R., Sheets, E., Urbini, L., De Vittor, C., Goffredo, S. and Gambi, M. C. 2020. Ocean acidification causes variable trait-shifts in a coral species. – *Global Change Biol.* 26: 6813–6830.
- Telesca, L., Peck, L. S., Sanders, T., Thyrring, J., Sejr, M. K. and Harper, E. M. 2019. Biomineralization plasticity and environmental heterogeneity predict geographical resilience patterns of foundation species to future change. – *Global Change Biol.* 25: 4179–4193.
- Turley, C. M., Roberts, J. M. and Guinotte, J. M. 2007. Corals in deep-water: will the unseen hand of ocean acidification destroy cold-water ecosystems? – *Coral Reefs* 26: 445–448.
- Watson, S.-A., Morley, S. A. and Peck, L. S. 2017. Latitudinal trends in shell production cost from the tropics to the poles. – *Sci. Adv.* 3: e1701362.
- Weiner, S. and Dove, P. M. 2003. An overview of biomineralization processes and the problem of the vital effect. – *Rev. Mineral. Geochem.* 54: 1–29.
- Wickham, H., Averick, M., Bryan, J., Chang, W., McGowan, L., François, R., Grolemund, G., Hayes, A., Henry, L., Hester, J., Kuhn, M., Pedersen, T., Miller, E., Bache, S., Müller, K., Ooms, J., Robinson, D., Seidel, D., Spinu, V., Takahashi, K., Vaughan, D., Wilke, C., Woo, K. and Yutani, H. 2019. Welcome to the tidyverse. – *J. Open Source Softw.* 4: 1686.