

ANNOTATED CHECKLIST OF ANOMURAN DECAPOD CRUSTACEANS OF THE
WORLD (EXCLUSIVE OF THE KIWAOIDEA AND FAMILIES CHIROSTYLIDAE AND
GALATHEIDAE OF THE GALATHEOIDEA)
PART II – PORCELLANIDAE

Masayuki Osawa

*Research Center for Coastal Lagoon and Environments, Shimane University,
1060 Nishikawatsu-cho, Matsue, Shimane 690-8504, Japan
Email: osawam@soc.shimane-u.ac.jp*

Patsy A. McLaughlin

*Shannon Point Marine Center, Western Washington University,
1900 Shannon Point Road, Anacortes, WA 98221-4042, USA
Email: hermit@fidalgo.net*

INTRODUCTION

Ng et al. (2008) and McLaughlin et al. (this volume) referred to the “windows” to the literature and the “springboards” for associating species with their scientific names that provided the foundations for subsequent brachyuran, paguroid and lithodoid research. For the porcellanids, one treatise in particular has provided a similar base upon which virtually all subsequent porcellanid reports have been patterned. Despite its regional focus, Haig’s (1960) monograph of eastern Pacific species included 87 of the 225 species estimated to be present worldwide at the time (Chace, 1951). During the last half century the number of genera has increased from 14 prior to Haig’s (1960) monograph to 30 and the number of valid species from 225 to 277.

HISTORY OF CLASSIFICATION

A. Milne-Edwards & Bouvier (1894) reviewed the early placements of the family and despite their superficial resemblance to brachyuran crabs, the classification of the Porcellanidae has had a much less convoluted path than seen for the lithodids and *Lomis*. By the time that Boas (1880) completed his studies of the Decapoda, there was general agreement that the Porcellanidae was correctly assigned to the Galatheoidea. That relationship has not been challenged, even though other changes in the superfamily Galatheoidea have been proposed (e.g., McLaughlin et al., 2007).

INFRAORDER ANOMURA MACLEAY, 1838

Superfamily Galatheoidea, extant family Porcellanidae
Superfamily Galatheoidea Samouelle 1819

Porcellanidae Haworth, 1825

- = Porcellaniens H. Milne Edwards, 1837
- = Porcellaniadae Randall, 1840
- = Porcellanodea Henderson 1888
- = Porcellainea Holmes, 1900

DESCRIPTIVE TERMS AND CURRENT STATUS

General morphology. – The general body shape is crab-like and the carapace is well calcified. Regions of the dorsal integument are not usually well defined. The anterior margin of the carapace is produced into a short rostrum or rostral lobe. The eyes are pigmented; ocular orbits are sometimes well developed and ocular acicles are absent. The antennules have broad basal segments. The antennal peduncles are four-segmented, with the distal three moveable; antennal acicles are absent. The third maxillipeds each have a broad and flattened ischium; no crista dentata is developed. Gills consist of 14 pairs of biserial phyllobranchiae, paired arthrobranchs are present on each third maxilliped and on pereopods 1–4; one pleurobranch is developed on body wall above each pereopod 2–5.

The chelipeds are symmetrical or asymmetrical, usually broad and dorsoventrally flattened, but sometimes inflated. Pereopods 2–4 are developed as ambulatory legs; pereopod 5 is reduced, modified, and frequently carried under carapace. The pleon is well developed, symmetrical, carried bent under cephalothorax, and held against thorax. It is composed of six pleomeres and a telson.

Adult males usually have well developed, paired pleopods on pleomere 2 that are modified as gonopods; occasionally these are reduced, rudimentary or absent. Females usually

have paired pleopods on each pleomere 3–5, but those of pleomere 3 are sometimes reduced or absent. The telson and uropods are well developed; the telson is composed of 5 or 7 segments.

Development. – Although early carcinologists considered porcellanid larvae to be quite similar to brachyuran zoeae, it would appear that the only characters shared by the two groups are the reduced and somewhat rod-shaped antennal endopod and the absence of a functional exopod on the third maxilliped. Porcellanid zoeae are very distinctive and immediately recognized by their very elongate rostral and posterolateral carapace spines. Only two zoeal stages are passed through prior to the molt to megalopa, except in *Petrocheles* Miers, 1876 where five zoeal stages have been documented. It is also only in this genus that uropods develop in a zoeal stage. In all other porcellanids studied to date, uropods develop in the megalopal stage. Development of larval pleopods occurs in the second zoeal stage and these pleopods become function in the megalopal stage, except in *Petrocheles*, where pleopods never develop. However, pleopods are reduced or lost with the molts to early crab stages. And in the cases of males, pleopods do not reoccur unless the second pair develops as gonopods, except in *Novorostrum* Osawa, 1998, and some species of *Petrolisthes* Stimpson, 1858, where reduced or moderately developed pleopods are seen on pleomeres 3–5. Egg-bearing pleopods do redevelop on pleomeres 3–5 or 4 and 5 in adult females.

Current status. – Among the phylogenetic analyses that have been reported in the past quarter century, the Porcellanidae have remained aligned with the Galatheoidea; however, the sister taxon varied between the Galatheidae (Martin & Abele, 1986; McLaughlin et al., 2007; Ah Yong et al., 2009) or the Chirostylidae (Pérez-Losada et al., 2002; Ah Yong & O’Meally, 2004; Macpherson et al., 2005), with Morrison et al. (2002) placing the Porcellanidae as sister to the Galatheidae-Chirostylidae pair. Although previous data indicated that the Porcellanidae was correctly placed in the Galatheoidea, Ah Yong et al. (2009) found that the Porcellanidae nested in a paraphyletic Galatheidae. Thus the true phylogenetic relationship of this family to other galatheids is not as well understood as heretofore believed.

CHECKLIST

Family Porcellanidae Haworth, 1825

- Aliaporcellana* Nakasone & Miyake, 1969
 = *Aliaporcellana* Nakasone & Miyake 1969 (type species *Porcellana suluensis* Dana, 1852, by original designation; gender feminine)
Aliaporcellana kikuchii Nakasone & Miyake, 1969
Aliaporcellana pygmaea (De Man, 1902) [*Porcellana*]
 = *Polyonyx pugilator* Nobili, 1905
Aliaporcellana suluensis (Dana, 1852) [*Porcellana*]
 {1}
 = *Polyonyx denticulatus* Paul’son, 1875
 = *Polyonyx hexagonalis* Zehntner, 1894

- Aliaporcellana telestophila* (Johnson, 1958) [*Polyonyx*]
Allopetrolisthes Haig, 1960
 = *Allopetrolisthes* Haig, 1960 (type species *Porcellana angulosa* Guérin, 1835, by original designation; gender masculine)
Allopetrolisthes angulosus (Guérin, 1835) [*Porcellana*]
 = *Porcellana carinata* Kinahan, 1857
 = *Petrolisthes reissi* Ortmann, 1892
Allopetrolisthes punctatus (Guérin, 1835) [*Porcellana*]
 = *Porcellana cristata* H. Milne Edwards, 1837
Allopetrolisthes spinifrons (H. Milne Edwards, 1837) [*Porcellana*]
Ancylocheles Haig, 1978
 = *Ancylocheles* Haig, 1978 (type species *Porcellana gravelei* Sankolli, 1963, by original designation; gender masculine)
Ancylocheles gravelei (Sankolli, 1963) [*Porcellana*]
Capilliporcellana Haig, 1978
 = *Capilliporcellana* Haig, 1978 (type species *Porcellana murakamii* Miyake, 1942, by original designation; gender feminine)
Capilliporcellana murakamii (Miyake, 1942) [*Porcellana*]
Capilliporcellana wolffi Haig, 1981
Clastotoechus Haig, 1960
 = *Clastotoechus* Haig, 1960 (type species *Petrolisthes diffractus* Haig, 1957, by original designation; gender masculine)
Clastotoechus diffractus (Haig, 1957) [*Petrolisthes*]
Clastotoechus gorgonensis Werding & Haig, 1983
Clastotoechus hickmani Harvey, 1999
Clastotoechus lasios Harvey, 1999
Clastotoechus nodosus (Streets, 1872) [*Petrolisthes*]
Enosteoides Johnson, 1970
 = *Enosteoides* Johnson, 1970 (type species *Porcellana corallicola* Haswell, 1882, by original designation; gender masculine)
Enosteoides lobatus Osawa, 2009
Enosteoides melissa (Miyake, 1942) [*Porcellana*]
Enosteoides ornatus (Stimpson, 1858) [*Porcellana*]
 = *Porcellana corallicola* Haswell, 1882
Enosteoides palauensis (Nakasone & Miyake, 1968) [*Porcellana*]
 = *Enosteoides hainanensis* Yang & Sun, 2005
Euceramus Stimpson, 1860
 = *Euceramus* Stimpson (type species *Euceramus praelongus* Stimpson, 1860, by monotypy; gender masculine)
Euceramus panatelus Glassell, 1938
Euceramus praelongus Stimpson, 1860
Euceramus transversilineatus (Lockington, 1878) [*Porcellana*]
Euleniaios Ng & Nakasone, 1993 {2}
 = *Euleniaios* Ng & Nakasone, 1993 (type species *Polyonyx cometes* Walker, 1887, by original designation; gender masculine)
Euleniaios cometes (Walker, 1887) [*Polyonyx*]

- Heteropolyonyx* Osawa, 2001
 = *Heteropolyonyx* Osawa, 2001 (type species *Heteropolyonyx biforma* Osawa, 2001, by original designation; gender masculine)
- Heteropolyonyx biforma* Osawa, 2001
- Heteroporcellana* Haig, 1978
 = *Heteroporcellana* Haig, 1978 (type species *Porcellana corbicola* Haig, 1960, by original designation; gender feminine)
- Heteroporcellana corbicola* (Haig, 1960) [*Porcellana*]
- Liopetrolisthes* Haig, 1960
 = *Liopetrolisthes* Haig, 1960 (type species *Porcellana mitra* Dana, 1852, by original designation; gender masculine)
- Liopetrolisthes mitra* (Dana, 1852) [*Porcellana*]
 = *Porcellana spinosa* Philippi 1860
 = *Porcellana patagonica* Cunningham, 1871
 = *Porcellana pulchellula* Cano, 1889
- Lissoporcellana* Haig, 1978
 = *Lissoporcellana* Haig, 1978 (type species *Porcellana quadrilobata* Miers, 1884, by original designation; gender feminine)
 = ? *Porcellanides* Czerniavsky 1884 (type species *Porcellana kriczagini* Czerniavsky, 1884, by original designation; gender masculine) {3}
- Lissoporcellana flagellicola* Osawa & Fujita, 2005
- Lissoporcellana furcillata* (Haig, 1965) [*Porcellana*]
- Lissoporcellana miyakei* Haig, 1981
- Lissoporcellana monodi* Osawa, 2007
- Lissoporcellana nakasonei* (Miyake, 1978) [*Porcellana*] (replacement name)
 = *Porcellana maculata* Miyake, 1957 (preoccupied name)
- Lissoporcellana nitida* (Haswell, 1882) [*Porcellana*]
- Lissoporcellana pectinata* Haig, 1981
- Lissoporcellana quadrilobata* (Miers, 1884) [*Porcellana*]
 = *Porcellana streptochirus* White, 1847 (nomen nudum)
 = *Porcellana streptochira* Miers, 1884
 = *Porcellana gaekwari* Southwell, 1909
 = *Lissoporcellana paraquadrilobata* Yang & Sun, 1992
- Lissoporcellana spinuligera* (Dana, 1853) [*Porcellana*] (replacement name)
 = *Porcellana armata* Dana, 1852 (preoccupied name)
 = *Porcellana latifons* Stimpson, 1858
- Lissoporcellana streptochiroides* (Johnson, 1970) [*Porcellana* (*Pisidia*)]
 = *Porcellana armata* Dana, 1852 (preoccupied name)
- Madarateuchus* Harvey, 1999 {4}
 = *Madarateuchus* Harvey, 1999 (type species *Petrolisthes vanderhorsti* Schmitt, 1924, by monotypy; gender masculine)
- Madarateuchus vanderhorsti* (Schmitt, 1924) [*Petrolisthes*]
- Megalobrachium* Stimpson, 1858
 = *Megalobrachium* Stimpson, 1858 (type species *Megalobrachium granuliferum* Stimpson, 1858, by original designation; gender neuter)
- = *Porcellanides* Nobili, 1901 (type species *Porcellanides festae* Nobili, 1901, by monotypy; gender feminine) (preoccupied name)
- = *Porcellanopsis* Rathbun 1910 (type species *Porcellana festae* Nobili, 1901, by monotypy; gender feminine) (replacement name) {5}
- Megalobrachium erosum* (Glassell, 1936) [*Pisosoma*]
- Megalobrachium festae* (Nobili, 1901) [*Porcellanides*] {6}
- = *Porcellanides festae* Nobili, 1901
 = *Porcellanopsis festai* (Nobili, 1901)
- Megalobrachium garthi* Haig, 1957
 = *Pachycheles rotundus* A. Milne-Edwards & Bouvier 1894 (nomen nudum)
- Megalobrachium mortenseni* Haig, 1962
- Megalobrachium pacificum* Gore & Abele, 1974 {7}
- Megalobrachium peruvianum* Haig, 1960
- Megalobrachium poeyi* (Guérin-Méneville, 1855) [*Porcellana*] {8}
- = *Megalobrachium granuliferum* Stimpson, 1858
 = *Porcellana robusta* Torralbas, 1917
- Megalobrachium roseum* (Rathbun, 1900) [*Porcellana*]
- Megalobrachium sinuimanus* (Lockington, 1878) [*Petrolisthes* (*Pisosoma*)]
- Megalobrachium smithi* (Glassell, 1936) [*Pisosoma*]
- Megalobrachium soriatum* (Say, 1818) (*Porcellana*) {9}
- = *Megalobrachium walteri* Rodrigues da Costa, 1968
- Megalobrachium tuberculipes* (Lockington, 1878) [*Pachycheles*]
- Minyocerus* Stimpson, 1858
 = *Minyocerus* Stimpson, 1858 (type species *Porcellana angusta* Dana, 1852, by original designation; gender masculine)
 = *Porcellina* Müller, 1862, (type species *Porcellina stelicola* by monotypy; gender feminine)
- Minyocerus angustus* (Dana, 1852) [*Porcellana*]
 = *Porcellina stelicola* Müller, 1862
 = *Porcellana rosamondae* Boone, 1930
- Minyocerus kirki* Glassell, 1938
- Neopetrolisthes* Miyake, 1937
 = *Neopetrolisthes* Miyake, 1937 (type species *Neopetrolisthes ohshimai* Miyake, 1937, by original designation; gender masculine)
- Neopetrolisthes alobatus* (Laurie, 1926) [*Petrolisthes*]
- Neopetrolisthes maculatus* (H. Milne Edwards, 1837) [*Porcellana*] {10}
- = *Neopetrolisthes ohshimai* Miyake, 1937 {10}
- Neopetrolisthes spinatus* Osawa & Fujita, 2001
- Neopisosoma* Haig, 1960 {11}
 = *Neopisosoma* Haig, 1960 (type species *Neopisosoma bicapillatum* Haig, 1960, by original designation; gender neuter)
- Neopisosoma angustifrons* (Benedict, 1901) [*Pisosoma*]
- Neopisosoma bicapillatum* Haig, 1960
- Neopisosoma curacaoense* (Schmitt, 1924) [*Pisosoma*]
- Neopisosoma dohenyi* Haig, 1960
- Neopisosoma mexicanum* (Streets, 1871) [*Pachycheles*]

- Neopisosoma neglectum* Werding, 1986
Neopisosoma orientale Werding, 1986
Novorostrum Osawa, 1998
 = *Novorostrum* Osawa, 1998 (type species *Petrolisthes indicus* De Man, 1893, by original designation; gender neuter)
Novorostrum decorocrus Osawa, 1998
Novorostrum indicum (De Man, 1893) [*Petrolisthes*]
Novorostrum phuketense Osawa, 1998 {12}
Novorostrum securiger (Melin, 1939) [*Petrolisthes*] {13}
- Orthochela* Glassell, 1936
 = *Orthochela* Glassell, 1936 (type species *Orthochela pumila* Glassell, 1936, by original designation; gender feminine)
Orthochela pumila Glassell, 1936
- Pachycheles* Stimpson, 1858
 = *Pachycheles* Stimpson, 1858 (type species *Porcellana grossimana* Guérin, 1835, by original designation; gender masculine)
 = *Pisosoma* Stimpson, 1858 (type species *Porcellana pisum* H. Milne Edwards, 1837, by original designation; gender neuter)
Pachycheles ackleianus A. Milne-Edwards, 1880
 = ? *Porcellana parrai* Guérin-Ménéville, 1855
Pachycheles attaragos Harvey & de Santo, 1997
Pachycheles barbatus A. Milne-Edwards, 1878
 = *Pachycheles ornatus* Bouvier, 1906
Pachycheles bellus (Osorio, 1887) [*Porcellana*]
Pachycheles biocellatus (Lockington, 1878) [*Petrolisthes* (*Pisosoma*)]
 = *Petrolisthes* (*Pisosoma*) *gibbosicarpus* Lockington, 1878
 = *Pisosoma aphrodita* Boone, 1932
Pachycheles calculosus Haig, 1960
Pachycheles chacei Haig, 1956
Pachycheles chubutensis Boschi, 1963
Pachycheles crassus (A. Milne-Edwards, 1869) [*Porcellana* (*Pachycheles*)]
Pachycheles crinimanus Haig, 1960
Pachycheles cristobalensis Gore, 1970
Pachycheles garciaensis (Ward, 1942) [*Pisosoma*]
Pachycheles granti Haig, 1965
Pachycheles greeleyi (Rathbun, 1900) [*Pisosoma*]
Pachycheles grossimanus (Guérin, 1835) [*Porcellana*]
Pachycheles hertwigi Balss, 1913
 = *Pachycheles balssi* Miyake, 1943
Pachycheles holosericus Schmitt, 1921
 = *Pachycheles holosericus* Schmitt, 1918 (in Nininger, 1918) (nomen nudum) {14}
Pachycheles johnsoni Haig, 1965
Pachycheles laevidactylus Ortmann, 1892
 = *Pachycheles haigae* Rodrigues da Costa, 1960 {15}
- Pachycheles marcortezensis* Glassell, 1936
Pachycheles monilifer (Dana, 1852) [*Porcellana*]
 = *Porcellana rugosimanus* White 1847 (nomen nudum)
Pachycheles natalensis (Krauss, 1843) [*Porcellana*]
- Pachycheles panamensis* Faxon, 1893
 = *Pachycheles sonorensis* Glassell, 1936
Pachycheles pectiniscarpus Stimpson, 1858
Pachycheles pilosus (H. Milne Edwards, 1837) [*Porcellana*]
Pachycheles pisoides (Heller, 1865) [*Porcellana*]
 = *Pachycheles lifuensis* Borradaile, 1900
 = *Pachycheles fronto* Melin, 1939
Pachycheles pubescens Holmes, 1900
Pachycheles riisei (Stimpson, 1859) [*Pisosoma*]
 = *Pisosoma riisei* Stimpson, 1858 (nomen nudum)
 = *Pisosoma glabra* Kingsley, 1880
 = *Pisosoma reisei* Young, 1900 (misspelling of *riisei*)
 = *Pisosoma risei* Moreira, 1920 (misspelling of *riisei*)
Pachycheles rudis Stimpson 1859
 = *Pachycheles rudis* Stimpson, 1858 (nomen nudum)
Pachycheles rugimanus A. Milne-Edwards, 1880
Pachycheles sahariensis Monod, 1933
Pachycheles sculptus (H. Milne Edwards, 1837) [*Porcellana*]
 = *Porcellana pisum* H. Milne Edwards, 1837
 = *Porcellana pulchella* Haswell, 1882
 = *Pachycheles sculptus* var. *tuberculatus* Borradaile, 1900
Pachycheles serratus (Benedict, 1901) [*Pisosoma*]
Pachycheles setiferous Yang, 1996
Pachycheles setimanus (Lockington, 1878) [*Petrolisthes* (*Pisosoma*)]
Pachycheles spinidactylus Haig, 1957
Pachycheles spinipes (A. Milne-Edwards, 1873) [*Porcellana*]
 = *Porcellana sollasi* Whitelegge, 1897
Pachycheles stevensii Stimpson, 1858
Pachycheles subsetosus Haig, 1960
Pachycheles susanae Gore & Abele, 1974
Pachycheles tomentosus Hendersson, 1893
Pachycheles trichotus Haig, 1960
Pachycheles velerae Haig, 1960
Pachycheles vicarius Nobili, 1901
Parapetrolisthes Haig, 1962 {16}
 = *Parapetrolisthes* Haig, 1962 (type species *Petrolisthes tortugensis* Glassell, 1945, by original designation; gender masculine)
Parapetrolisthes tortugensis (Glassell, 1945) [*Petrolisthes*]
- Petrocheles* Miers 1876 {17}
 = *Petrocheles* Miers 1876 (type species *Petrolisthes* (*Petrocheles*) *spinosus* Miers, 1876, by subsequent designation by Haig, 1964; gender masculine)
Petrocheles australiensis (Miers, 1876) [*Petrolisthes* (*Petrocheles*)]
Petrocheles spinosus (Miers, 1876) [*Petrolisthes* (*Petrocheles*)]
- Petrolisthes* Stimpson, 1858 {18}
 = *Petrolisthes* Stimpson, 1858 (type species *Porcellana violacea* Guérin, 1831, by original designation; gender masculine)

- Petrolisthes aegyptiacus* Werding & Hiller, 2007
Petrolisthes agassizii Faxon, 1893
Petrolisthes amoenus (Guérin Méneville, 1855) [Porcellana]
 = *Petrolisthes serratus* Henderson 1888
Petrolisthes armatus (Gibbes, 1850) [Porcellana]
 = *Porcellana gundlachii* Guérin-Méneville, 1855
 = *Porcellana leporina* Heller, 1862
 = *Petrolisthes similis* Henderson, 1888 (nomen nudum)
 = *Petrolisthes iheringi* Ortmann, 1897
 = *Petrolisthes armatus* var. *pallidus* Verrill, 1908
Petrolisthes artifrons Haig, 1960
Petrolisthes asiaticus (Leach, 1820) [Pisidia]
 = *Petrolisthes leporinoides* Ortmann, 1892
 = *Petrolisthes yaeyamensis* Miyake, 1937
Petrolisthes bifidus Werding & Hiller, 2004
Petrolisthes bispinosus Borradaile, 1900
Petrolisthes bolivarensis Werding & Kraus, 2003
Petrolisthes borradailei Kropp, 1984
Petrolisthes boscii (Audouin, 1826) [Porcellana]
 = ? *Porcellana rugosa*? White, 1847
 = *Petrolisthes rugosus* Miers, 1884
 = *Petrolisthes amakusensis* Miyake & Nakasone, 1966
Petrolisthes brachycarpus Sivertsen, 1933
 = *Petrolisthes gracilis* var. *brachycarpus* Siversten, 1933
Petrolisthes cabrilloi Glassell, 1945
 = *Petrolisthes cabrilla* Glassell, 1945 {19}
Petrolisthes caribensis Werding, 1983
Petrolisthes carinipes (Heller, 1861) [Porcellana] {20}
Petrolisthes celebesensis Haig, 1981
Petrolisthes cinctipes (Randall, 1840) [Porcellana] {21}
 = *Porcellana rupicola* Stimpson, 1857
Petrolisthes coccineus (Owen, 1839) [Porcellana]
 = *Porcellana barbata* Heller, 1862
 = *Petrolisthes nipponensis* Miyake, 1937
Petrolisthes cocoensis Haig, 1960
Petrolisthes columbiensis Werding, 1983
Petrolisthes crenulatus Lockington, 1878
Petrolisthes decacanthus Ortmann, 1897
Petrolisthes desmarestii (Guérin, 1835) [Porcellana]
 = *Porcellana acanthophora* H. Milne Edwards & Lucas, 1844
 = *Porcellana dubia* Kinahan, 1857
Petrolisthes dissimulatus Gore, 1983
Petrolisthes donadio Hiller & Werding, 2007
Petrolisthes donanensis Osawa, 1997
Petrolisthes edwardsii (de Saussure, 1853) [Porcellana] {22}
Petrolisthes eldredgei Haig & Kropp 1987
Petrolisthes elegans Haig, 1981
Petrolisthes elongatus (H. Milne Edwards, 1837) [Porcellana]
Petrolisthes eriomerus Stimpson, 1871
Petrolisthes extremus Kropp & Haig, 1994 {20}
Petrolisthes fimbriatus Borradaile, 1898
Petrolisthes galapagensis Haig, 1960
Petrolisthes galathinus (Bosc, 1802) [Porcellana]
 = *Porcellana sexispinosa* Gibbes, 1850
 = *Porcellana danae* Gibbes 1854
 = *Porcellana egregia* Guérin-Méneville, 1855
 = *Petrolisthes occidentalis* Stimpson 1858 (nomen nudum)
 = *Petrolisthes occidentalis* Stimpson, 1859
 = *Petrolisthes brasiliensis* S. I. Smith, 1869
Petrolisthes gertrudae Werding, 1996
Petrolisthes glasselli Haig, 1957
Petrolisthes gracilis Stimpson, 1859
 = *Petrolisthes gracilis* Stimpson, 1858 (nomen nudum)
Petrolisthes granulatus (Guérin, 1835) [Porcellana]
 = *Porcellana striata* H. Milne Edwards, 1837
Petrolisthes haigae Chace, 1962
Petrolisthes haplodactylus Haig, 1988
Petrolisthes hastatus Stimpson, 1858
 = *Porcellana inermis* Heller, 1862
 = *Petrolisthes tenkatei* De Man, 1893
Petrolisthes haswelli Miers, 1884
Petrolisthes heterochrous Kropp, 1986
Petrolisthes hians Nobili, 1901
 = *Pisosoma flagraciliata* Glassell, 1937
Petrolisthes hirtipes Lockington, 1878
Petrolisthes hirtispinosus Lockington, 1878
Petrolisthes hispaniolensis Werding & Hiller, 2005
Petrolisthes holotrichus Nobili, 1901
Petrolisthes japonicus (De Haan, 1849) [Porcellana]
Petrolisthes jugosus Streets, 1872
Petrolisthes kranjiensis Johnson, 1970
Petrolisthes laevigatus (Guérin, 1835) [Porcellana]
 = *Porcellana valida* Dana, 1852
Petrolisthes lamarkii (Leach, 1820) [Pisidia] {23}
 = *Porcellana dentata* H. Milne Edwards, 1837
 = *Porcellana pulchripes* White, 1847 (nomen nudum)
 = *Porcellana speciosa* Dana, 1852
 = *Porcellana bellis* Heller, 1865
Petrolisthes leptocheles (Heller, 1861) [Porcellana]
Petrolisthes lewisi (Glassell 1936) [Pisosoma]
 = *Petrolisthes lewisi austrinus* Haig, 1960 {24}
Petrolisthes limicola Haig, 1988
Petrolisthes lindae Gore & Abele, 1974
Petrolisthes magdalenensis Werding, 1978
Petrolisthes manimaculis Glassell, 1945
Petrolisthes marginatus Stimpson, 1859
 = *Petrolisthes marginatus* Stimpson, 1858 (nomen nudum)
 ? = *Porcellana Cessacii* A. Milne-Edwards, 1878 {25}
 ? = *Petrolisthes Cecoci* Balss, 1914 (misspelling of *cessaci* in figure legend)
Petrolisthes masakii Miyake, 1943
Petrolisthes melini Miyake & Nakasone, 1966 {20}
Petrolisthes mesodactylon Kropp, 1984 {26}
Petrolisthes militaris (Heller, 1862) [Porcellana] {27}
 = *Porcellana annulipes* White, 1847 (nomen nudum)
 = *Petrolisthes annulipes* Miers, 1884

- Petrolisthes miyakei* Kropp, 1984
Petrolisthes moluccensis (De Man, 1888) [*Porcellana* (*Petrolisthes*)]
Petrolisthes monodi Chace, 1956
= ? *Porcellana speciosa* Osorio, 1889
Petrolisthes nanshensis Yang, 1996
Petrolisthes nigrunguiculatus Glassell, 1936
Petrolisthes nobilii Haig, 1960
Petrolisthes novaezelandiae Filhol, 1885
= *Petrolisthes stewarti* Filhol, 1885
Petrolisthes obtusifrons Miyake, 1937
= *Petrolisthes varicolor* Osawa 1998
Petrolisthes ornatus Paul'son, 1875
= *Porcellana* (*Petrolisthes*) *mossambica* Hilgendorf, 1879
Petrolisthes ortmanni Nobili, 1901
Petrolisthes perdecorus Haig, 1981
Petrolisthes platymerus Haig, 1960
Petrolisthes politus (Gray, 1831) [*Porcellana*]
= *Porcellana magnifica* Gibbes, 1850
Petrolisthes polymitus Glassell, 1937
Petrolisthes pubescens Stimpson, 1858
Petrolisthes quadratus Benedict, 1901
Petrolisthes rathbunae Schmitt, 1921 {28}
= *Petrolisthes rathbunae* Schmitt, in Hilton, 1916 (nomen nudum)
Petrolisthes robsonae Glassell, 1945
Petrolisthes rosariensis Werding, 1982
Petrolisthes rufescens (Heller, 1861) [*Porcellana*]
Petrolisthes sanfelipensis Glassell, 1936
= *Petrolisthes felipensis* Glassell, 1937
Petrolisthes sanmartini Werding & Hiller, 2002
Petrolisthes scabriculus (Dana, 1852) [*Porcellana*] {27}
Petrolisthes schmitti Glassell, 1936
Petrolisthes squamanus Osawa, 1996
Petrolisthes teres Melin, 1939 {29}
= *Petrolisthes inermis* Haswell, 1882 (preoccupied name)
Petrolisthes tiburonensis Glassell, 1936
Petrolisthes tomentosus (Dana, 1852) [*Porcellana*]
= *Porcellana penicillata* Heller, 1862
= *Porcellana villosa* Richters, 1880
Petrolisthes tonsorius Haig, 1960
Petrolisthes tridentatus Stimpson, 1859
= ? *Porcellana affinis* Gray, 1831
= *Petrolisthes tridentatus* Stimpson, 1858 (nomen nudum)
Petrolisthes trilobatus Osawa, 1996
Petrolisthes tuberculatus (Guérin, 1835) [*Porcellana*]
= *Porcellana lobifrons* H. Milne Edwards, 1837
= *Porcellana tuberculifrons* Nicolet, 1849 (misspelling of *tuberculatus*)
Petrolisthes tuberculosus (H. Milne Edwards, 1837) [*Porcellana*] {30}
= *Porcellana affinis* Guérin, 1835 (preoccupied name)
= *Porcellana tuberculifrons* H. Milne Edwards & Lucas, 1843 (unnecessary replacement name)
Petrolisthes unilobatus Henderson, 1888
Petrolisthes violaceus (Guérin, 1831) [*Porcellana*]
= *Porcellana macrocheles* Poeppig, 1836
Petrolisthes virgatus Paul'son, 1875
= *Petrolisthes trivirgatus* Ortmann, 1894
Petrolisthes zaca Haig, 1968
Pisidia Leach, 1820
= *Pisidia* Leach, 1820 (type species *Cancer longicornis* Linnaeus, 1767, by subsequent designation by ICZN Opinion 701, 1964; gender feminine)
= *Streptochirus* Stimpson, 1907 (type species *Porcellana serratifrons* Stimpson, 1858, by subsequent designation by Haig, 1960; gender masculine)
Pisidia bluteli (Risso, 1816) [*Porcellana*] {31}
Pisidia brasiliensis Haig, in Rodrigues da Costa, 1968
Pisidia dehaanii (Krauss, 1843) [*Porcellana*]
Pisidia delagoae (Barnard, 1955) [*Porcellana*]
Pisidia dispar (Stimpson, 1858) [*Porcellana*] {32}
= *Polyonyx carinatus* Ortmann, 1892
= *Porcellana rostrata* Baker, 1905
Pisidia gordonii (Johnson, 1970) [*Porcellana* (*Pisidia*)]
Pisidia inaequalis (Heller, 1861) [*Porcellana*]
Pisidia longicornis (Linnaeus, 1767) [*Cancer*] {31}
= *Cancer hexapus* Linnaeus, 1767
= *Pisidia linnaeana* Leach, 1820
Pisidia longimana (Risso, 1816) [*Porcellana*] {31}
Pisidia magdalenensis (Glassell, 1936) [*Porcellana*]
Pisidia serratifrons (Stimpson, 1858) [*Porcellana*]
= *Porcellana spinulifrons* Miers, 1879
Pisidia streptocheles (Stimpson, 1858) [*Porcellana*]
Pisidia striata Yang & Sun, 1990
Pisidia variabilis (Yang & Sun, 1985) [*Enosteoides*] {32}
Polyonyx Stimpson, 1858
= *Polyonyx* Stimpson, 1858 (type species *Porcellana macrocheles* Gibbes, 1850, by original designation; gender masculine)
Polyonyx biunguiculatus (Dana, 1852) [*Porcellana*] {33}
= *Polyonyx parabiunguiculatus* Yang, 1996
Polyonyx boucheti Osawa, 2007
Polyonyx bouvieri Saint Joseph, 1900
Polyonyx confinis Haig, 1960
Polyonyx gibbesi Haig, 1956 (replacement name)
= *Porcellana macrocheles* Gibbes, 1850 (primary homonym)
= ? *Porcellana crepinii* Müller, 1862 (nomen nudum)
= ? *Porcellana* (*Polyonyx*) *creplinii* Müller, 1870
= ? *Polyonyx creplinii* Ejchel, 1965 (misspelling of *Polyonyx*)
= ? *Polyonyx creplini* Ejchel, 1965 (misspelling of *Polyonyx*)
Polyonyx haigae McNeil, 1968
Polyonyx hendersoni Southwell, 1909 {34}
Polyonyx loimicola Sankolli, 1965
Polyonyx maccullochi Haig, 1965
Polyonyx nitidus Lockington, 1878

- Polyonyx obesulus* Miers, 1884 {33}
 = *Porcellana obesula* White, 1847 (nomen nudum)
 = *Porcellana (Polyonyx) tuberculosa* De Man, 1888
 = *Polyonyx parvidens* Nobili, 1905
 = *Polyonyx paucidens* Nobili 1906 (misspelling of *parvidens*)
Polyonyx pedalis Nobili, 1905
Polyonyx plumatus Yang & Xu, 1994
Polyonyx quadratus Chace, 1956
Polyonyx quadriungulatus Glassell, 1935
Polyonyx senegalensis Chace, 1956
Polyonyx sinensis Stimpson, 1858
Polyonyx spina Osawa, 2007
Polyonyx splendidus Sankolli, 1963 {34}
Polyonyx thai Werding, 2001
Polyonyx transversus (Haswell, 1882) [*Porcellana*]
Polyonyx triunguiculatus Zehntner, 1894
 = *Polyonyx acutifrons* De Man, 1896
Polyonyx tulearis Werding, 2001
Polyonyx utinomii Miyake, 1943
Polyonyx vermicola Ng & Sasekumar, 1993
Porcellana Lamarck, 1801
 = *Porcellana* Lamarck, 1801 (type species *Cancer platy-cheles* Pennant, 1777, by monotypy; gender feminine)
 = *Platycheles* Billberg, 1820 (type species *Cancer platy-cheles* Pennant, 1777, by tautonomy; gender masculine)
 = *Enostea* Gistel, 1848 (unnecessary replacement name for *Porcellana*; type species *Cancer platycheles* Pennant, 1777)
Porcellana africana Chace, 1956 {35}
 = *Porcellana platycheles africana* Chace, 1956
Porcellana cancrisocialis Glassell, 1936
Porcellana caparti Chace, 1956 {36}
Porcellana corbicola Haig, 1960
Porcellana curvifrons Yang & Sun, 1990
Porcellana elegans Chace, 1956 {36}
Porcellana foresti Chace, 1956 {36}
Porcellana habeii Miyake, 1961
Porcellana hancocki Glassell, 1938
 = *Porcellana hancocki* Glassell, 1937 (nomen nudum)
Porcellana lillyae Lemaitre & Campos, 2000
Porcellana paguriconviva Glassell, 1936
Porcellana persica Haig, 1966
Porcellana platycheles (Pennant, 1777) [*Cancer*] {35}
 = *Porcellana paivacarvalhoi* Rodriguez da Costa, 1968 {35}
Porcellana pulchra Stimpson, 1858
Porcellana sayana (Leach, 1820) [*Pisidia*]
 = *Porcellana sayii* Gray, 1831 (misspelling of *sayana*)
 = *Porcellana ocellata* Gibbes, 1850
 = *Porcellana sagrai* Guérin-Méneville, 1855
 = *Porcellana sagrai* Von Martens, 1872 (misspelling of *Porcellana*)
 = *Porcellana stimpsoni* A. Milne-Edwards, 1880 {37}
 = ? *Porcellana robertsoni* Henderson, 1888
Porcellana sigsbeiana A. Milne-Edwards, 1880
Porcellanella White, 1852
 = *Porcellanella* White, 1852 (type species *Porcellanella triloba* White, 1852, by monotypy; gender feminine)
Porcellanella haigae Sankarankutty, 1963
Porcellanella triloba White, 1852
 = *Porcellanella picta* Stimpson, 1858
Pseudoporcellanella Sankarankutty, 1961
 = *Pseudoporcellanella* Sankarankutty 1961 (type species *Pseudoporcellanella manoliensis* Sankarankutty, 1961, by monotypy; gender feminine)
Pseudoporcellanella manoliensis Sankarankutty, 1961
Raphidopus Stimpson, 1858
 = *Raphidopus* Stimpson, 1858 (type species *Raphidopus ciliatus* Stimpson, 1858, by monotypy; gender masculine)
Raphidopus ciliatus Stimpson, 1858
Raphidopus indicus Henderson, 1893
Raphidopus johnsoni Ng & Nakasone, 1994
Ulloaia Glassell, 1938
 = *Ulloaia* Glassell, 1938 (type species *Ulloaia perpusillia* Glassell, 1938, by original designation; gender feminine)
Ulloaia perpusillia Glassell, 1938

Incerta sedis

- Petrolisthes costai* Rodriguez da Costa, 1968 {38}
Pisidia melloleitaoi Rodriguez da Costa, 1968 {38}
Porcellana mattosi Osorio, 1887 {39}

NOTES

- {1} *Aliaporcellana suluensis* has variations in the morphology of the carapace, host animals, and coloration in life, which can be referred to species specific characters. Thus, the two species currently considered synonyms of *A. suluensis* may prove to be valid taxa.
- {2} The status of *Euleniaios* has not been satisfactorily resolved. Ng & Nakasone's (1993) establishment of *Euleniaios* for *Polyonyx cometes* was not recognized by Werding (2001). However, Osawa (2007a) has suggested that the validity of *Euleniaios* does have support.
- {3} Based on the author's diagnosis, Haig (1978) suggested that Czerniavsky's (1884) *Porcellanides* might be a senior synonym of *Lissoporcellana* because the type species, *P. kriczagini*, from Singapore was likely to be a member of *Lissoporcellana*.

- {4} *Madarateuchus* was established by Harvey (1999) as a monotypic genus for *Clastoteuchus vanderhorsti*. Although the molecular analyses by Rodríguez et al. (2006) did not support the validity of the genus, it is presently considered a valid taxon.
- {5} *Porcellanopsis* was proposed by Rathbun (1910) as a replacement name for *Porcellanides* Nobili, preoccupied by *Porcellanides* Czerniavsky. Although Haig (1960) considered *Porcellanopsis* a synonym of *Megalobrachium*, Rodríguez et al. (2006) suggested, based on molecular evidence, that Rathbun's taxon might actually be a distinct taxon.
- {6} Haig (1957b) noted that the specific name *festae* must be spelled *festai* in accordance with current nomenclatorial practice. And while it is true the the initial generic assignment, *Porcellanides*, is masculine (ICZN Code, 1999), the name *festae* is a patronym, and as such does not change endings with generic reassignments. Although the feminine "e" rather than masculine "i" was used by the author without explanation, that is his original spelling and is to be maintained. Nobili (1901) did not specify a dedication to Enrico Festa, thus it is possible that the dedication was meant for his wife.
- {7} Although Bulletin of Marine Science, 23(3) was supposed to have been published in September of 1973, the publication was delayed and that issue did not appear in print until early 1974.
- {8} Ng et al. (2008) cited the footnote by Evenhuis (2003: 17) explaining the problem with correct citations of the author Guérin-Méneville. Guérin added the honorific suffix "Méneville" to his surname in 1836 after his Encyclopédie Méthodique was completed. Ng et al. (2008) choose to cite authorship of all taxa published by this author prior to 1836 simply as Guérin and Guérin-Méneville from 1836 onward. We have followed this same protocol.
- {9} Based on their molecular analyses, Rodríguez et al. (2006) suggested that *Megalobrachium soriatum* contained a cryptic species.
- {10} Haig (1965, 1979) considered *Neopetrolisthes ohshimai* a junior synonym of *N. maculatus* and pointed out that the Indian and Pacific Ocean populations of *N. maculatus* had different patterns of spots. However, Osawa & Fujita (2001) noted that both spot-patterns occurred in the Ryukyu Islands, western Pacific. Nor were the two species distinguishable from one other by morphological characters, thus supporting the status of *N. ohshimai* as a junior synonym. It was also found that *N. maculatus* had various spot sizes and patterns of reddish purple, red, or brown color on the carapace and pereopods. Further ecological and genetic studies are needed before these variations are fully understood.
- {11} The generic status of *Neopisosoma* has been questioned since its establishment as was discussed by Gore (1970), Werding (1986), Werding & Müller (1990), Werding et al. (2001), and Rodríguez et al. (2004, 2005). Although Rodríguez et al. (2006) found that *Neopisosoma* was supported as a genus distinct from *Pachycheles* based on molecular analysis, a worldwide review of both genera will be required to clarify their relationships.
- {12} Since the generic gender is neuter, the name *N. phuketensis* is emended to *N. phuketense*.
- {13} Osawa (1998a) treated *N. securiger* as a junior synonym of *N. indicum*. Additional specimens from Taiwan and the Ogasawara and Ryukyu Islands, western Pacific, have shown that the differences Osawa considered size related are actually species specific characters. Melin's (1939) species has been reinstated (Osawa & Chan, 2010).
- {14} Although *Pachycheles holosericus* Schmitt, 1918 was cited by name in Nininger (1918) and presumably accompanied by a figure, there was no description and according to Haig (1960) the text figure was unrecognizable to species. Schmitt (1921) described this taxon as a new species.
- {15} Buckup & Bond-Buckup (1999) included *Pachycheles haigae* as a valid species in the Brazilian fauna, perhaps unaware that Harvey & de Santo (1996) had placed this taxon in synonymy with *Pachycheles laevidactylus*.
- {16} *Parapetrolisthes* was established for *Petrolisthes tortugensis* on the basis of the shape of the fingers. However, the molecular analyses by Hiller et al. (2006) and Rodríguez et al. (2006) suggested that this species should be grouped with the *Petrolisthes galathinus* complex. The validity of the genus and its postulated relationship with the Galatheidae were not supported by these molecular studies. Nonetheless, it is retained as a valid genus until such time as revisionary studies determine its proper affiliation.
- {17} The developmental and morphological characters of larvae and adults of *Petrocheles* suggest a close relationship between this genus and some galatheids (Hale, 1927; Wear, 1965; pers. obs. of one of the present authors, MO). Molecular analyses of Hiller et al. (2006) and Ah Yong et al. (2009) suggested that *Petrocheles* should be excluded from the porcellanid clade or that the Galatheidae might be paraphyletic on the basis of an internally nested Porcellanidae.
- {18} The genus *Petrolisthes* is the most species-rich genus in the Porcellanidae. Several informal species groups have been distinguished in this genus based on the adult and larval morphology (e.g., Haig, 1960; Osawa, 1995; Fujita et al., 2002). Molecular phylogenies

- by Stillman & Reeb (2001) and Rodriguez et al. (2006) show *Petrolisthes* as currently recognized is paraphyletic on the basis of nested positions of species of *Allopetrolisthes*, *Clastotoechus*, *Liopetrolisthes*, *Megalobranchium*, and *Parapetrolisthes*.
- {19} Haig (1960) emended the spelling from *cabrilloa* to *cabrilloi* to conform with the ICZN rule for the formation of specific names based on modern surnames.
- {20} Miyake & Nakasone (1966) determined that the specimens reported by Melin (1939) as *P. carinipes* did not agree with Heller's (1861) taxon and proposed the name *Petrolisthes melini* for those specimens. Similarly, Lewinsohn (1974) found differences between Melin's (1939) material and the type of *P. carinipes*, but did not describe Melin's material as a new species. Recent studies suggest that *P. melini* as defined by Miyake & Nakasone (1966) agrees more closely with *P. extremus* Kropp & Haig, 1994 than with *P. carinipes*. If further study shows that *P. melini* and *P. extremus* are conspecific, *P. melini* has priority.
- {21} The correct date of publication of Randall's paper in the Journal of the Academy of Natural Sciences, Philadelphia is 1840 (Melville & Smith, 1987)
- {22} Whereas Ng et al. (2008) elected to omit the honorific "de" for all French authors, we have chosen to retain it for those authors commonly cited in Anomuran literature; e.g., de Saussure, de Saint Laurent.
- {23} The taxonomic relationship of *Petrolisthes lamarckii* with its presumed synonyms is unsatisfactory. Examination by one of the current authors (MO) has shown that specimens from various western Pacific localities have exhibited considerable variations in certain significant characters, in addition to variations in living color. Further study will undoubtedly show that several distinct taxa have been confounded under the name *P. lamarckii*.
- {24} Hendrickx & Harvey (1999) indicated that the subspecies *austrinus* and the nominal subspecies *lewisi* were not distinct and considered *P. lewisi austinus* a synonym.
- {25} Gore (1983) placed *P. cessacii* in synonymy with *P. marginatus* on the basis of adult morphological characters, but cautioned that whether or not the eastern and western Atlantic populations of the species were reproductively isolated remained to be determined. At that time Gore believed that the answer might be found in a comparison of the larval morphology of the different populations. With the advances being made in molecular determinations, the answer well may be found in examinations of the populations' DNA.
- {26} Certain characters of *P. mesodactylon* suggest a possible relationship between this species and *Novorostrum securiger*. It is possible that further study will show that *P. mesodactylon* actually should be assigned to *Novorostrum*.
- {27} Two forms of both *Petrolisthes militaris* and *P. scabriculus* have been found in the western Pacific, each differing in coloration and habitats. Further investigation is needed to determine if one or both represent more than one taxon.
- {28} Although *Petrolisthes rathbunae* was cited by name in Hilton (1916) and presumably accompanied by a figure, there was no description and according to Haig (1960), the text figure was unrecognizable to species. Schmitt (1921) described this taxon as a new species.
- {29} Melin (1939) proposed the replacement name *Petrolisthes teres* for *Petrolisthes inermis* Haswell, 1882, preoccupied by *Porcellana inermis* Heller, 1862 (= *Petrolisthes hastatus* Stimpson, 1858). Although the types of *Petrolisthes teres* should have been the material described as *P. inermis* by Haswell (1882), Melin (1939) used his non-type material from the Bonin (Ogasawara) Islands to describe *P. teres*. Re-examination of some Melin's (1939) specimens has shown that they are actually *P. japonicus* (De Haan, 1849). Judging from the photographs of the syntypes of *P. teres* (= *P. inermis* Haswell, 1882), there is a small spine on the anterior margin of the third segment of the antennal peduncle. Such spine is absent in *P. japonicus*. Among other morphologically allied congeners, the spine is present in *P. elongatus*, *P. kranjiensis*, *P. limicola*, as well as those '*P. inermis*' reported by Miyake (1943) and '*P. teres*' reported by Johnson (1970). The exact identity of *P. teres* has yet to be determined.
- {30} Haig (1960) discussed the confusion that had existed among the names applied to *Petrolisthes tuberculatus*. She pointed out that although Ortmann (1897) argued that *Porcellana affinis* Gray, 1831 was undefined, thus not a homonym of *P. affinis* Guérin, 1835, Gray's description albeit brief, was sufficient to validate it. Consequently, Guérin's (1835) *P. affinis* was not available.
- {31} The validity of *Pisidia bluteli*, *P. longicornis* and *P. longimana* as distinct species has been the subject of debate. Holthuis (1961) and Zariquiey Álvarez (1968) clearly distinguished the three species. In contrast, García Raso (1987) found what he believed to be a morphological cline that existed between *P. longicornis* and *P. longimana*, and d'Udekem d'Acoz (1999) discussed his belief that *P. bluteli* was not distinct from *P. longicornis*. However, Koukouras et al. (2002) found constant characters that separated the three.

- {32} *Pisidia dispar* and *P. variabilis* differ considerably from other congeners in such characters as carapace convexity, rostral structure and orbital angle. The possibility exists that these species should be placed in a separate genus.
- {33} The taxonomy of *Polyonyx biunguiculatus* and *P. obesulus* is still problematic (see Osawa, 2007b) and a review of specimens hitherto reported as the two species as well as their synonyms is needed.
- {34} Werding (2001) suggested that *P. hendersoni* and *P. splendidus* represented a distinct genus, although no formal action was taken.
- {35} Chace's (1956) subspecies of *Porcellana platycheles*, *P. p. africanus*, was considered a distinct taxon by d'Udekem d'Acoz (1999) and elevated to full specific rank. No additional subspecies have been described. Veloso & Melo (1993) also considered *P. paivacarvalhoi* to be a junior synonym of *P. platycheles*.
- {36} In her revision of *Porcellana*, Haig (1978) established four new genera for nine species formerly assigned to the genus. Nonetheless, the retention of certain species in *Porcellana* is questionable. Haig mentioned that *P. caparti* and *P. elegans* should perhaps be reassigned to *Enosteoides* and *Capilliporcellana*, respectively. She believed that *P. foresti* appeared to be related to *Ancyclocheles*. Until the type materials of all three taxa are reexamined, the questions of generic placement remain ambiguous. However, based on the structures of the carapaces and chelipeds, at least *P. caparti* and *P. foresti* appear clearly different from species of *Enosteoides* and *Ancyclocheles*.
- {37} *Porcellana stimpsoni* was briefly described by A. Milne-Edwards (1880). The presumably differentiating characters of A. Milne-Edwards' taxon were found to be the result of abnormal development of the left cheliped and frontal region in the type specimen. Consequently, *P. stimpsoni* cannot be distinguished from *P. sayana*, and is considered a junior synonym of the latter species. (B. Werding, in litt.; see Lemaitre & Campos, 2000).
- {38} According to Veloso & de Melo (1993) and Rodriguez et al. (2005), *Petrolisthes costai* Rodriguez da Costa, 1968 and *Pisidia melloleitaoi* Rodriguez da Costa, 1968 could not be confirmed as valid species.
- {39} According to Chace (1956), until sufficient material is available, the true generic status of *Porcellana mattosi* Osorio, 1887, cannot be determined.

LITERATURE CITED

- Ahyong, S. T. & D. O'Meally, 2004. Phylogeny of the Decapoda Reptantia: Resolution using three molecular loci and morphology. *Raffles Bulletin of Zoology* **52**: 673–693.
- Ahyong, S. T., K. E. Schnabel, & E.W. Maas, 2009. Anomuran phylogeny: new insights from molecular data. In: Martin, J. W., K. A. Crandall, & D. L. Felder (Eds.). *Decapod Crustacean Phylogenetics. Crustacean Issues*, **18**. CRC Press, Boca Raton, FL, New York, London. Pp. 399–414.
- Audouin, V., 1826. Explication sommaire des planches de Crustacés de l'Égypte et de la Syrie, publiées par Jules-Cesar Savigny, member de l'Institut; Offrant un exposé des caractères naturels des genres avec la distinction des espèces. Description de l'Égypte, ou recueil des observations et des recherches que ont été faites en Égypte pendant l'Expedition de l'armée française. *Histoire Naturelle*, **1**: 77–98. Paris.
- Baker, W. H., 1905. Notes on South Australian decapod Crustacea. Part III. *Transactions and Proceedings of the Royal Society of South Australia*, **29**: 252–269.
- Balss, H., 1913. Ostasiatische Decapoden. I. Die Galatheiden und Paguriden. In: Doflein, F., Beiträge zur Naturgeschichte Ostasiens. *Abhandlungen der Mathematisch-Physische Klasse der Königlich Bayerischen Akademie der Wissenschaften, München*, Supplement **2**(9): 1–85.
- Balss, H., 1914. Decapode Crustaceen von den Giinea-Inseln, Süd-Kamerun und dem Congogebiet. *Ergebnisse der Zweiten Deutschen Zentral-Afrika-Expedition 1910-1911 unter Führung Adolph Friedrichs, Herzog zu Mecklenburg*, **1** (Zoologie): 97–108.
- Barnard, K. H., 1955. Additions to the fauna-list of South African Crustacea and Pycnogonida. *Annals of the South African Museum*, **43**: 1–107.
- Benedict, J. E., 1901. The anomuran collections made by the Fish Hawk Expedition to Porto Rico. *Bulletin of the U. S. Fish Commission*, **20**: 129–148.
- Billberg, G. J., 1820. *Enumeratio insectorum in Museo Gust. Typis Gadelianis, Holmiae*. 138 pp.
- Boas, J. E. V., 1880. Studier over decapodernes Slægtskabsforhold. *Kongelige Danske Videnskabernes Selskabs Skrifter, naturvidenskabelig og matematisk Afdeling*, (5)**6**: 25–210.
- Boone, L., 1930. Scientific results of the cruises of the yachts "Eagle" and "Ara", 1921–1928, William K. Vanderbilt, commanding. Crustacea: Anomura, Macrura, Schizopoda, Isopoda, Amphipoda, Mysidacea, Cirripedia, and Copepoda. *Bulletin of the Vanderbilt Marine Museum*, **3**: 1–221.
- Boone, L., 1932. The littoral crustacean fauna of the Galapagos Islands. Part II. Anomura. *Zoologica, New York*, **14**: 1–62.
- Borradaile, L. A., 1898. On some crustaceans from the South Pacific. Part II. Macrura Anomala. *Proceedings of the Zoological Society of London*, **1898**: 457–468.
- Borradaile, L. A., 1900. On the Stomatopoda and Macrura brought by Dr Willey from the south seas. In: Willey, A., *Zoological results based on material from New Britain, New Guinea, Loyalty Islands and elsewhere, collected during the years 1895, 1896 and 1897. Part IV*. Cambridge, University Press. Pp. 395–428.
- Bosc, L. A. G., 1802. *Histoire naturelle des Crustacés, contenant leur description et leurs moeurs, avec figures dessinées d'après nature*. **2**: 1–296. Paris, Deterville.
- Boschi, E. E., 1963. Sobre dos especies de *Pachycheles* de la Argentina (Crustacea, Anomura). *Neotropica*, **9**(28): 31–37.

- Bouvier, E.-L., 1906. Sur une petite collection de Crustacés (Décapodes et Stomatopodes) recueillis par M. Charles Gravier à l'île San Thome (Afrique occidentale). *Bulletin du Muséum national d'Histoire naturelle, Paris*, **12**: 491–499.
- Buckup, L. & G. Bond-Buckup, 1999. *Os Crustáceos do Rio Grande do Sul*. Porto Alegre, Editora Da Universidade Federal do Rio Grande do Sul. 503 pp.
- Chace, F. A., Jr., 1951. The number of species of decapod and stomatopod Crustacea. *Journal of the Washington Academy of Sciences*, **41**: 370–372.
- Chace, F. A., Jr., 1956. Porcellanid crabs. *Expédition Océanographique Belge dans les Eaux Côtières Africaines de l'Atlantique Sud (1948–1949). Résultats Scientifiques*, **3**: 1–54. Institut Royal des Sciences Naturalles de Belgique, Bruxelles.
- Chace, F. A., Jr., 1962. The non-brachyuran decapod crustaceans of the Clipperton Island. *Proceedings of the United States National Museum*, **113**: 605–635.
- Cano, G., 1889. Crostacei brachiuri ed anomuri raccolti nel viaggio della "Vettor Pisani" intorno al globo. *Bollettino della Società dei Naturalisti in Napoli, série (1) 3*: 79–105, 169–268.
- Cunningham, R. O., 1871. Notes on the reptiles, Amphibia, fishes, Mollusca, and Crustacea obtained during the voyage of H. M. S. "Nassau" in the years 1866–69. *Transactions of the Linnean Society of London*, **27**: 465–502.
- Czerniavsky, V., 1884. Crustacea Decapoda Littoraliam. Materialia ad Zoographiam Ponticam Comparatam. Fasc. II. *Trudy Obshchestva Ispytatelei Prirody pri Imperatorskom Khar'kovskom Universitete* (Proceedings on the Comparative Zoography of the Black Sea. Vol. II. Coastal Decapod Crustaceans), supplement **13**: 1–268. Kharkov. (In Latin)
- Dana, J. D., 1852–1853. Crustacea. *United States Exploring Expedition during the years 1838, 1839, 1840, 1841, 1842, under the command of Charles Wilkes, U.S.N.*, **13**: i–viii, 1–685 [1852], 686–1818 [1853]. C. Sherman, Philadelphia. (Reprinted Antiquariaat Junk, Lochem, Netherlands, 1972.)
- Ejchel, F. Z., 1965. Notes on crustacean decapods. *Anais da Academia Brasileira de Ciências*, **37** (suplemento): 325–326.
- Evenhuis, N. L., 2003. Publication and dating of the journals forming the Annals and Magazine of Natural History and the Journal of Natural History. *Zootaxa*, **385**: 1–68.
- Faxon, W., 1893. Reports on the Dredging Operations of the West Coast of Central America to the Galapagos, to the West Coast of Mexico, and in the Gulf of California by the U.S. Fish Commission Steamer Albatross, during 1891, Lieut.-Commander Z.L. Tanner, U. S. N., commanding. VI: Preliminary Descriptions of New Species of Crustacea. *Bulletin of the Museum of Comparative Zoology, Harvard College*, **24**: 149–220.
- Filhol, H., 1885. 1. Zoologie. 3. Crustacés. In: Recherches zoologiques, botaniques et géologiques faites à l'île Campbell et en Nouvelle-Zelande. *Recueil de Memoires, Rapports et Documents relatifs à l'Observation du Passage de Vénus sur le Soleil du 9 Décembre 1874. Mission de île Campbell*. Zoologie, **3(2)1**: 349–510; Atlas: Pp. 25–29, pls. 38–55. Institut de France, Académie des Sciences, Paris.
- Fujita, Y., S. Shokita & M. Osawa, 2002. Complete larval development of *Petrolisthes unilobatus* reared under laboratory conditions (Decapoda: Anomura: Porcellanidae). *Journal of Crustacean Biology*, **22**: 567–580.
- Garcia Raso, J. E., 1987. Consideraciones taxonomicas sobre algunas especies de Crustaceos Decapodos de fondos de concrecionamiento calcareo y *Posidonia oceanica*. *Pisidia longicornis-Pisidia longinana* y *Galathea bolivari-Galathea cenarroi*. *Investigación Pesquera*, **51**: 277–292.
- Gibbes, L. R., 1850. On the carcinological collections of the United States, and an enumeration of species contained in them, with notes on the most remarkable, and descriptions of new species. *Proceedings of the American Association for the Advancement of Science*, **3**: 167–201.
- Gibbes, L. R., 1854. Description, with figures, of six species of *Porcellana*, inhabiting eastern coast of North America. *Proceedings of the Elliott Society of Natural History*, **1**: 6–13.
- Gistel, J., 1848. *Naturgeschichte des Thierreichs für höhere Schulen bearbeitet*. Hoffmannsche, Stuttgart. 216 pp.
- Glassell, S. A., 1935. New or little known crabs from the Pacific coast of northern Mexico. *Transactions of the San Diego Society of Natural History*, **8**: 91–106.
- Glassell, S. A., 1936. New porcellanids and pinnotherids from tropical North American waters. *Transactions of the San Diego Society of Natural History*, **8**: 277–304.
- Glassell, S. A., 1937. The Templeton Crocker Expedition. IV. Porcellanid crabs from the Gulf of California. *Zoologica*, **22**: 79–88.
- Glassell, S. A., 1938a. New and obscure decapod Crustacea from the west American coasts. *Transactions of the San Diego Society of Natural History*, **8**: 411–454.
- Glassell, S. A., 1938b. Three new anomuran crabs from the Gulf of California. *Allan Hancock Pacific Expeditions*, **5**: 1–6.
- Glassell, S. A., 1945. Four new species of North American crabs of the genus *Petrolisthes*. *Journal of the Washington Academy of Sciences*, **35**: 223–229.
- Gore, R. H., 1970. *Pachycheles cristobalensis* sp. nov., with notes on the porcellanid crabs of the southwestern Caribbean. *Bulletin of Marine Science*, **20**: 957–970.
- Gore, R. H., 1977. *Neopisosoma angustifrons* (Benedict, 1901): The complete larval development under laboratory conditions, with notes on larvae of the related genus *Pachycheles* (Decapoda, Anomura, Porcellanidae). *Crustaceana*, **33**: 284–300.
- Gore, R. H., 1983. The identity of *Petrolisthes marginatus* Stimpson, 1859, and the description of *Petrolisthes dissimulatus* n.sp. (Crustacea: Decapoda: Porcellanidae). *Proceedings of the Biological Society of Washington*, **96**: 89–102.
- Gore, R. H. & L. G. Abele, 1974. Three new species of porcellanid crabs (Crustacea, Decapoda, Porcellanidae) from the Bay of Panama and adjacent Caribbean waters. *Bulletin of Marine Science*, **23** [1973]: 559–573.
- Gray, J. E., 1831. Description of the species of *Porcellana*, in the collection of the British Museum. *The Zoological Miscellany*, **1**: 14–16.
- Guérin-Méneville, F. E., 1831. Atlas, Crustacés. [F.-E. Guérin]. In: Duperrey, L. I., *Voyage autour du monde, exécuté par ordre du Roi, sur la corvette de Sa Majesté, La Coquille, pendant les années 1822, 1823, 1824 et 1825*. Paris. Pls. 1–5.
- Guérin-Méneville, F. E., 1835. Observations sur les Porcellanes. [F.-E. Guérin]. *Bulletin de la Société Sciences Naturelles de France*: 115–116.
- Guérin-Méneville, F. E., 1855. Crustacés, araignées é Insectos. In: de la Sagra, R., *Historia física, política y natural de la isla de Cuba*. **8**. Atlas de Zoología. Paris. 20 pls.
- Haan, W., de, 1833–1850. Crustacea. In: Siebold, P.F. von, *Fauna Japonica sive Descriptio Animalium, quae in Itinere*

- per Japoniam, Jussu et Auspiciis Superiorum, qui Summum in India Batava Imperium Tenent, Suscepto, Annis 1823-1830 Collegit, Notis, Observationibus et Adumbrationibus Illustravit.* Lugduni-Batavorum, Leiden. 243 pp.
- Haig, J., 1956. The Galatheidea (Crustacea Anomura) of the Allan Hancock Atlantic Expedition with a review of the Porcellanidae of the western north Atlantic. *Allan Hancock Atlantic Expeditions*, **8**: 1–44.
- Haig, J., 1957a. Four new porcelain crabs from the Eastern Pacific. *Bulletin of the South California Academy of Sciences*, **56**: 31–41.
- Haig, J., 1957b. The porcellanid crabs of the “Askoy” Expedition to the Panama Bight. *American Museum Novitates*, **1865**: 1–17.
- Haig, J., 1960. The Porcellanidae (Crustacea Anomura) of the eastern Pacific. *Allan Hancock Pacific Expeditions*, **24**: 1–440.
- Haig, J., 1962. Papers from Dr. Th. Mortensen’s Pacific expedition 1914–1916. 79. Porcellanid crabs from eastern and western America. *Videnskabelige Meddelelser Dansk Naturhistorisk Forening i Kjøbenhavn*, **124**: 171–192.
- Haig, J., 1965. The Porcellanidae (Crustacea, Anomura) of Western Australia with description of four new Australian species. *Journal of the Royal Society of Western Australia*, **48**: 97–117.
- Haig, J., 1966. The Porcellanidae (Crustacea Anomura) of the Iranian Gulf and Gulf of Oman. *Videnskabelige Meddelelser Dansk Naturhistorisk Forening i Kjøbenhavn*, **129**: 49–65.
- Haig, J., 1968. Eastern Pacific expedition of the New York Zoological Society. Porcellanid crabs (Crustacea: Anomura) from the west coast of Tropical America. *Zoologica, New York*, **53**: 57–74.
- Haig, J., 1978. Contribution toward a revision of the porcellanid genus *Porcellana* (Crustacea: Decapoda: Anomura). *Proceedings of the Biological Society of Washington*, **91**: 706–714.
- Haig, J., 1979. Expédition Rumphius II (1975) Crustacés parasites, commensaux, etc. (Th. Monod et R. Serène, éd.). V. Porcellanidae (Crustacea, Decapoda, Anomura). *Bulletin du Muséum National d’Histoire Naturelle, Paris*, **4(A)1**: 119–135.
- Haig, J., 1981a. Three new species of *Petrolisthes* (Decapoda, Anomura, Porcellanidae) from the Indo-West Pacific. *Journal of Crustacean Biology*, **1**: 265–271.
- Haig, J., 1981b. Porcellanid crabs from the Indo-West Pacific, Part II. *Steenstrupia*, **7**: 269–291.
- Haig, J., 1988. Two new mangrove-dwelling porcellanid crabs, of genus *Petrolisthes* Stimpson, from tropical Australia (Crustacea: Decapoda: Anomura). *The Beagle, Records of the Northern Territory Museum of Arts and Sciences*, **5**: 71–76.
- Haig, J. & R. K. Kropp, 1987. *Petrolisthes eldredgei*, a new porcellanid crab from the Indo-West Pacific, with redescription of two related species. *Micronesica*, **20**: 171–186.
- Hale, H. M., 1927. *The Crustaceans of South Australia. Part I.* South Australian Government Printer, Adelaide. 201 pp.
- Harvey, A. W., 1999. A review of the genus *Clastoetochus* Haig, with descriptions of a new genus and two new species (Decapoda: Anomura: Porcellanidae). *American Museum Novitates*, **3255**: 1–32.
- Harvey, A. W. & E. M. de Santo, 1996. On the status of *Pachycheles laevidactylus* Ortmann, 1892 (Crustacea: Decapoda: Porcellanidae). *Proceedings of the Biological Society of Washington*, **109**: 707–714.
- Harvey, A. W. & E. M. de Santo, 1997. A new species of *Pachycheles* from the Hawaiian Islands (Crustacea: Decapoda: Porcellanidae). *Proceedings of the Biological Society of Washington*, **110**: 65–68.
- Haswell, W. A., 1882. Description of some new species of Australian Decapoda. *Proceedings of the Linnean Society of New South Wales*, **6**: 750–763.
- Haworth, A. H., 1825. A new binary arrangement of the macrurous Crustacea. *The Philosophical Magazine and Journal*, **65**: 105–106, 183–184.
- Heller, C., 1861. Beiträge zur Crustaceen-Fauna des Rothen Meeres. Zweiter Theil. *Sitzungs-Berichte der Mathematisch-Physikisch Klasse der Kaiserlichen Akademie der Wissenschafte, Wien*, **44**: 241–295.
- Heller, C., 1862. Neue Crustaceen, gesammelt während der Weltumseglung der k. k. Fregatte Novara. Zweiter vorläufiger Bericht. *Verhandlungen der Kaiserlich-Königlichen Zoologisch-Botanischen Gesellschaft in Wien*, **12**: 519–528.
- Heller, C., 1865. Crustaceen. In: *Reise der öesterreichischen Fregate Novarra um die Erde, in den Jahren 1857, 1858, 1859, unter den Befehlen des Commodore B. von Wüllerstorff-Urbair.* Zoologischer Theil, **2**(3). Kaiserlich -königlichen Hof- und Staatsdruckerei, Wien. 280 pp.
- Henderson, J. R., 1888. Report on the Anomura collected by H.M.S. Challenger during the years 1873–76. *Report on the Scientific Results of the Voyage of H.M.S. Challenger (Zoology)*, **27**: i–xi, 1–221. Edinburgh etc., Her Majesty’s Stationary Office.
- Henderson, J. R., 1893. A contribution to Indian carcinology. *Transaction of the Linnean Society, London (Zoology)*, **(2)5**: 325–458.
- Hendrickx, M. E. & A. W. Harvey, 1999. Checklist of anomuran crabs (Crustacea: Decapoda) from the eastern tropical Pacific. *Belgian Journal of Zoology*, **129**: 363–389.
- Hilgendorf, F., 1879. Die von Hr. W. Peters in Moçambique gesammelten Crustaceen. *Monatsbericht der Königlich Preussischen Akademie der Wissenschaften zu Berlin*, **1878** (1879): 782–851.
- Hiller, A., H. Kraus, M. Almon, & B. Werding, 2006. *Petrolisthes galathinus* complex: species boundaries based on color pattern, morphology and molecules, and evolutionary interrelationships between this complex and other Porcellanidae (Crustacea: Decapoda: Anomura). *Molecular Phylogenetics and Evolution*, **40**: 547–569.
- Hiller, A. & B. Werding, 2007. Redescription of *Petrolisthes edwardsii* (de Saussure) and description of a new, sibling species from the eastern Pacific based on different colour, morphology and genetic identity (Crustacea: Anomura: Porcellanidae). *Organisms, Diversity & Evolution*, **7**: 181–194.
- Hilton, W. A., 1916. Crustacea from Laguna Beach. *Journal of Entomology and Zoology*, **8**: 65–73.
- Holmes, S. J., 1900. Synopsis of California stalk-eyed Crustacea. *Occasional Papers of the California Academy of Sciences*, **7**: 1–262.
- Holthuis, L. B. 1961. Report on a collection of Crustacea Decapoda and Stomatopoda from Turkey and the Balkans. *Zoologische Verhandlungen*, **47**: 1–67.
- ICZN, 1999. International Code for Zoological Nomenclature, Fourth Edition. Adopted by the XXI General Assembly of the International Union of Biological Sciences. *International Trust for Zoological Nomenclature*, in association of the British Museum (Natural History) London. 306 pp.

- ICZN, 1964. [International Commission on Zoological Nomenclature]. Opinion 701. *Pisidia* Leach, 1820, designation of a type-species under the plenary powers; and *Cancer istrianus* Scopoli, 1763, suppressed under the plenary powers (Crustacea, Decapoda). *Bulletin of Zoological Nomenclature*, **21**: 108–110.
- Johnson, D. S., 1958. The Indo-West Pacific species of the genus *Polyonyx* (Crustacea, Decapoda, Porcellanidae). *The Annals of Zoology*, **2**: 95–118.
- Johnson, D. S., 1970. The Galatheidæ (Crustacea: Decapoda) of Singapore and adjacent waters. *Bulletin of the National Museum Singapore*, **35**: 1–44.
- Kinahan, J. R., 1857. Remarks on Crustacea collected in Peru, the high seas, and South Australia; with descriptions of undescribed species. *Journal of the Royal Dublin Society*, **1856/1857**: 328–352.
- Kingsley, J. S., 1880. On a collection of Crustacea from Virginia, North Carolina, and Florida, with a revision of the genera of Crangonidae and Palaemonidae. *Proceedings of the Academy of Natural Sciences of Philadelphia*, **31**: 383–427.
- Koukouras, A. M. Mavidis, & P. Y. Noël, 2001. The genus *Pisidia* Leach (Decapoda, Anomura) in northeastern Atlantic Ocean and the Mediterranean Sea. *Crustaceana*, **75**: 451–463.
- Krauss, F., 1843. *Die Südafrikanischen Crustaceen. Eine Zusammenstellung aller bekannten Malacostraca, Bemerkungen über deren Lebensweise und geographische Verbreitung, nebst Beschreibung und Abbildung mehrerer neuen Arten*. E. Schweizerbart'sche Verlagsbuchhandlung, Stuttgart. 68 pp.
- Kropp, R. K., 1984. Three new species of Porcellanidae (Crustacea: Anomura) from the Mariana Islands and a discussion of Borradaile's *Petrolisthes lamarckii* complex. *Micronesica*, **19**: 91–106 [Issue dated December 1983]
- Kropp, R. K., 1986. A neotype designation for *Petrolisthes tomentosus* (Dana), and description of *Petrolisthes heterochrous*, new species, from the Mariana Islands (Anomura: Porcellanidae). *Proceedings of the Biological Society of Washington*, **99**: 452–463.
- Kropp, R. K. & J. Haig, 1994. *Petrolisthes extremus*, a new porcelain crab (Decapoda: Anomura: Porcellanidae) from the Indo-West Pacific. *Proceedings of the Biological Society of Washington*, **107**: 312–317.
- Lamarck, J. B. P. A., 1801. *Système des animaux sans vertèbres, ou tableau général des classes, des ordres et des genres de ces animaux; présentant leurs caractères essentiels et leur distribution, d'après la considération de leurs rapports naturels et de leur organisation, et suivant l'arrangement établis dans les galeries du Muséum d'Histoire Naturelle, parmi leur dépouilles conservées; précédé du discours d'ouverture du cours de zoologie, donné dans le Muséum National d'Histoire Naturelle l'an 8 de la République*. Vol. 11. Paris, Déterville. 432 pp.
- Laurie, R. D., 1926. Anomura collected by Mr. J. Stanley Gardiner in the western Indian Ocean on H. M. S. "Sealark". Report of the Percy Sladen Trust expedition to the Indian Ocean in 1905. *Transactions of the Linnean Society of London*, (2, Zoology), **19**: 121–167.
- Leach, W. E., 1820. Galatéadées, *Galateadæ*. (Crust.). In: Cuvier, F., *Dictionnaire des Sciences Naturelles, dans lequel on traite Méthodiquement des Différens êtres de la Nature, considérés soit en eux-mêmes, d'après l'état actuel de nos connoissances, soit relativement à l'utilité qu'en peuvent retirer la Médecine, l'Agriculture, le Commerce et les Arts. Suivi d'une biographie des plus Célèbres Naturalistes. Ouvrage destiné aux médecins, aux agriculteurs, aux commerçans, aux artistes, aux manufacturiers, et à tous ceux qui ont intérêt à connoître les productions de la nature, leurs caractères génériques et spécifiques, leur lieu natal, leurs propriétés et leurs usages*. Vol. 18. F. G. Levrault et Le Normant, Strasbourg et Paris. Pp. 49–56.
- Lemaitre, R. & N. H. Campos, 2000. *Porcellana lillyae*, new species (Decapoda, Anomura, Porcellanidae), from the Caribbean Sea, with a key to the western Atlantic species of the genus. *Journal of Crustacean Biology*, **20** (Special Number 2): 259–265.
- Lewinsohn, Ch., 1974. Neubeschreibung von *Petrolisthes carinipes* (Heller, 1861) (Decapoda, Porcellanidae) und bemerkungen zur taxonomischen problematic der art. *Crustaceana*, **26**: 249–258.
- Linnaeus, C., 1767. *Systema naturae per regna tria naturae, secundum classes, ordines, genera, species, cum characteribus, differentiis, synonymis, locis*. Edition 12, **1**(2): 533–1327. Stockholm.
- Lockington, W. N., 1878. Remarks upon the Porcellanidea of the West Coast of North America. *Annals and Magazine of Natural History*, series (5)**2**:394–406.
- Macpherson, E., W. Jones & M. Segonzac, 2005. A new squat lobster family of Galatheoidea (Crustacea, Decapoda, Anomura) from the hydrothermal vents of the Pacific-Antarctic Ridge. *Zoosystema*, **27**: 709–723.
- Man, J. G. De, 1888. Bericht über die von Herrn Dr. J. Brock im indischen Archipel gesammelten Decapoden und Stomatopoden. *Archiv für Naturgeschichte*, **53**: 289–600.
- Man, J. G. De, 1893. Report on the podophthalmous Crustacea, collected in the year 1891 by Dr. H. Ten Kate in some islands of the Malay Archipelago. *Notes from the Leyden Museum*, **15**: 284–311.
- Man, J. G. De, 1896. Bericht über die von Herrn Schiffscapitän Storm zu Atjeh, an den westlichen Küsten von Malakka, Borneo und Celebes sowie in der Java-see gesammten Decapoden und Stomatopoden. Dritter Theil. *Zoologische Jahrbücher, Abtheilung für Systematik, Geographie und Biologie der Tiere*, **9**: 339–386.
- Man, J. G. De, 1902. Die von Herrn Professor Kükenthal im Indischen Archipel gesammelten Dekapoden und Stomatopoden. In: Kükenthal, W., *Ergebnisse einer zoologischen Forschungsreise in den Molukken und Borneo, im Auftrage der Senckenbergischen naturforschenden Gesellschaft. Abhandlungen der Senckenbergischen Naturforschenden Gesellschaft*, **25**: 467–929.
- Martens, E. von, 1872. Ueber Cubanische Crustaceen nach den Sammlungen Dr. J. Gundlach's. *Archiv für Naturgeschichte*, **38**: 77–147.
- Martin, J. W. & L. G. Abele, 1986. Phylogenetic relationships of the genus *Aegla* (Decapoda: Anomura: Aeglidæ), with comments on anomuran phylogeny. *Journal of Crustacean Biology*, **6**(3): 576–616.
- McNeil, F. A. M., 1968. Crustacea, Decapoda & Stomatopoda. *Great Barrier Reef Expedition 1928–29, Scientific Reports*, **7**: 1–98. British Museum (Natural History), London.
- McLaughlin, P. A., R. Lemaitre & U. Sorhannus, 2007. Hermit crab phylogeny: A reappraisal and its "fall-out". *Journal of Crustacean Biology*, **27**(1): 97–115.
- Melin, G., 1939. Paguriden und Galatheiden von Prof. Dr. Sixten Bocks Expedition nach den Bonin-Inseln 1914. *Kungliga Svenska Vetenskapsakademiens Handlingar*, (3)**18**(2): 1–119.
- Melville, R. V. & J. D. D. Smith, 1987. *Official lists and indexes of names and works in zoology*. International Trust for Zoological Nomenclature, London. 366 pp.

- Miers, E. J., 1876. Descriptions of some new species of Crustacea, chiefly from New Zealand. *The Annals and Magazine of Natural History*, (4)17: 218–229.
- Miers, E. J., 1879. On a collection of Crustacea made by Capt. H. C. St. John, R.N., in the Korean and Japanese seas. *Proceedings of the Zoological Society of London*, 1879: 18–61.
- Miers, E. J., 1884. Crustacea. In: *Report on the zoological collections made in the Indo-Pacific Ocean during the voyage of H.M.S. 'Alert' 1881–2*. British Museum, London. Pp. 178–322, 513–575.
- Milne-Edwards, A., 1869. In: de Folin, L. & L. Périer, *Les fonds de la mer, étude internationale sur les particularités nouvelles des régions sous-marines*. Volume 1. Savy, Paris. Pp. 128–130.
- Milne-Edwards, A., 1873. Description de quelques crustacés nouveaux ou peu connus provenant du Musée de M. C. Godeffroy. *Journal des Muséum Godeffroy*, 4: 253–264.
- Milne-Edwards, A., 1878. Description de quelques espèces nouvelles de Crustacés provenant du voyage aux îles du Cap-Vert de M. M. Bouvier et de Cessac. *Bulletin de la Société Philomatique de Paris*, (7) 2: 225–232.
- Milne-Edwards, A., 1880. Report on the results of dredging, under the supervision of Alexander Agassiz, in the Gulf of Mexico, and in the Caribbean Sea, 1877, '78, '79, by the United States Coast Survey Steamer «Blake», Lieut. Commander C. D. Sigsbee, U.S.N., and Commander J. R. Bartlett, U.S.N., commanding. 8. Études préliminaires sur les crustacés. *Bulletin of the Museum of Comparative Zoology at Harvard College*, 8: 1–68.
- Milne-Edwards, A. & E.-L. Bouvier, 1894. Considerations générales sur la famille des Galatheides. *Annales des Sciences Naturelles, Zoologie*, (7)16: 191–327.
- Milne Edwards, H. 1837. *Histoire naturelle des Crustacés, comprenant l'anatomie, la physiologie et la classification de ces animaux*, 2: 1–532, atlas, 32 pp., 42 pls. Librairie Encyclopédique de Roret, Paris.
- Milne Edwards, H. & H. Lucas, 1842–1844. Crustacés. In: d'Orbigny, A., *Voyage dans l'Amérique méridionale (le Brésil, la république orientale de l'Uruguay, la république Argentine, la Patagonie, la république du Chili, la république de Bolivie, la république du Pérou), exécutée pendant les années 1826, 1827, 1828, 1829, 1830, 1831, 1832 et 1833*, 6: 1–37. P. Bertrand, Vve Levrault, Paris, Strasbourg.
- Miyake, S., 1937a. A new crab-shaped anomuran living commensally with a gigantic sea-anemone (*Neopetrolisthes ohshimai* gen. et sp. nov.). *Zoological Magazine, Tokyo*, 49: 34–36.
- Miyake, S., 1937b. Description of a new species of *Petrolisthes* from Yaéyama-Group, Riukiu Islands (Anomura, Porcellanidae). *Zoological Magazine, Tokyo*, 49: 155–157.
- Miyake, S., 1937c. Note on *Petrolisthes yaeyamensis* sp. nov. (Anomura, Porcellanidae). *Zoological Magazine, Tokyo*, 49: 157–158.
- Miyake, S., 1942. Studies on the decapod crustaceans of Micronesia. III. Porcellanidae. *The Palau Tropical Biological Station Studies*, 2: 329–379.
- Miyake, S., 1943. Studies on the crab-shaped Anomura of Nippon and adjacent waters. *Journal of the Department of Agriculture, Kyushu Imperial University*, 7: 49–158.
- Miyake, S., 1957. A new porcellanid crab from middle Japan. *Publications of the Seto Marine Biological Laboratory*, 6: 75–78.
- Miyake, S., 1961. Three new species of the Anomura from Japan (Crustacea, Decapoda). *Journal of the Faculty of Agriculture, Kyushu University*, 11: 237–247.
- Miyake, S., 1978. *Porcellana nakasonei*, nom. nov. In: Nakasone, Y., Porcellanidae. In: Kikuchi T. & S. Miyake, *Fauna and flora of the sea around the Amakusa Marine Biological Laboratory. Decapod Crustacea* (Revised edition). Amakusa Marine Biological Laboratory, Amakusa. Pp. 28–29. (In Japanese)
- Miyake, S. & Y. Nakasone, 1966. On two species of the genus *Petrolisthes* (Anomura, Porcellanidae) from Japan. *Journal of the Faculty of Agriculture, Kyushu University*, 14: 173–182.
- Monod, T., 1933. Sur quelques Crustacés de l'Afrique occidentale. *Bulletin du Comité de l'Afrique occidentale française*, 15(2–3): 456–548.
- Moreira, C., 1920. Faune carcinologique de l'île de la Trinitade. *Bulletin de la Société Zoologique de France*, 45: 125–132.
- Morrison, C. L., A. W. Harvey, S. Lavery, K. Tieu, Y. Huang & C. W. Cunningham, 2002. Mitochondrial gene rearrangements confirm the parallel evolution of the crab-like body form. *Proceedings of the Royal Society, London*, 269: 345–350.
- Müller, F., 1862. Die Verwandlung der Porcellanen. Vorläufige Mittheilung. *Archiv für Naturgeschichte*, 28: 194–199.
- Müller, F., 1870. Bruchstücke zur Naturgeschichte der Bopyriden. *Jenaische Zeitschrift für Medizin und Naturwissenschaft*, 6: 53–73.
- Nakasone, Y. & S. Miyake, 1968c. A new species of *Porcellana* (Anomura: Porcellanidae) from the Palau Islands, with description of its related form. *OHMU (Occasional Papers of Zoological Laboratory, Faculty of Agriculture, Kyushu University, Fukuoka, Japan)*, 1: 165–171.
- Nakasone, Y. & S. Miyake, 1969. A new porcellanid crab (Anomura: Porcellanidae) from Japan (*Aliaporcellana kikuchii* gen. et sp. nov.), with description of two species of the new genus. *Publications of the Amakusa Marine Biological Laboratory*, 2: 17–32.
- Ng, P. K. L. & Y. Nakasone, 1993. Taxonomy and ecology of the porcellanid crab *Polyonyx cometes* Walker, 1887 (Crustacea: Decapoda), with description of a new genus. *Journal of Natural History*, 27: 1103–1117.
- Ng, P. K. L. & Y. Nakasone, 1994. On the porcellanid genera *Raphidopus* Stimpson, 1858, and *Pseudoporcellanella* Sankarankutty, 1961, with description of a new mangrove species, *Raphidopus johnsoni* from Singapore (Decapoda, Anomura). *Crustaceana*, 66: 1–21.
- Ng, P. K. L. & A. Sasekumar, 1993. A new species of *Polyonyx* Stimpson, 1858, of the *P. sinensis* group (Crustacea: Anomura: Porcellanidae) commensal with a chaetopterid worm from Peninsular Malaysia. *Zoologische Mededelingen*, 67: 466–472.
- Ng, P. K. L., D. Guinot, & P. J. F. Davie, 2008. Systema Brachyurorum: Part I. An annotated checklist of extant brachyuran crabs of the world. *Raffles Bulletin of Zoology, Supplement 17*: 1–286.
- Nicolet, H., 1849. Crustáceos. In: Gay, C., *Historia física y política de Chile segun documentos adquiridos en esta República durante doce años de residencia en ella y publicada bajo los auspicios del supremo gobiern*. Zoología 3: 115–318. Paris & Santiago.
- Nininger, H. H., 1918. Crabs taken at Laguna Beach in the summer of 1916. *Journal of the Entomology and Zoology*, 10: 36–42.
- Nobili, G., 1901. Viaggio del Dr. Enrico Festa nella Repubblica dell'Ecuador e regioni vicine. XXIII. *Decapodi e Stomatopodi. Bollettino dei Musei di Zoologia ed Anatomia comparata della R. Università di Torino*, 16 (415): 1–58.

- Nobili, G., 1905. Diagnoses préliminaires de 34 espèces et variétés nouvelles, et de 2 genres nouveaux de décapodes de la Mer Rouge. *Bulletin du Muséum national d'Histoire, Paris*, (1)11: 393–411.
- Nobili, G., 1906. Faune carcinologique de la Mer Rouge. Décapodes et Stomatopodes. *Annales des Sciences naturelles (Zoologie)*, (9)4: 1–347.
- Ortmann, A., 1892. Die Decapoden-Krebse des Strassburger Museums, mit besonderer Berücksichtigung der von Herrn Dr. Döderlein bei Japan und bei den Liu-Kiu-Inseln gesammelten und zur Zeit im Strassburger Museum aufbewahrten Formen. IV. Die Abtheilungen Galatheidea und Paguridea. *Zoologischen Jahrbücher, Abtheilung für Systematik, Geographie und Biologie der Thiere*, 6: 241–326.
- Ortmann, A., 1894. Crustaceen. In: R. Semon, *Zoologische Forschungsreisen in Australien und dem Malayischen Archipel. Denkschriften der Medischinisch-naturwissenschaftlichen Gesellschaft zu Jena*, 8: 1–80.
- Ortmann, A., 1897. Carcinologische Studien. *Zoologischen Jahrbücher, Abtheilung für Systematik, Geographie und Biologie der Thiere*, 10: 258–372.
- Osawa, M., 1995. Larval development of four *Petrolisthes* species (Decapoda: Anomura: Porcellanidae) under laboratory conditions, with comments on the larvae of the genus. *Crustacean Research*, 24: 157–187.
- Osawa, M., 1996. Two new species of the genus *Petrolisthes* Stimpson, 1858 (Decapoda: Anomura: Porcellanidae) from the Indo-West Pacific. *Journal of Crustacean Biology* 16: 602–612.
- Osawa, M., 1997. A new species of the genus *Petrolisthes* Stimpson, 1858 (Crustacea: Decapoda: Anomura: Porcellanidae) from Yonaguni Island, the Ryukyu Islands. *Proceedings of the Biological Society of Washington*, 110: 58–64.
- Osawa, M., 1998a. *Novorostrum*, new genus (Decapoda: Anomura: Porcellanidae), with descriptions of three related species. *Journal of Crustacean Biology*, 18: 161–176.
- Osawa, M., 1998b. Two rare species of the genus *Petrolisthes* (Decapoda: Anomura: Porcellanidae) from the Ryukyu Islands, with the description of a new species of the genus. *Journal of Crustacean Biology*, 18: 597–615.
- Osawa, M., 2001. *Heteropolyonyx biforma*, new genus and species, from Japan, and redescription of *Polyonyx utinomii* (Decapoda: Porcellanidae). *Journal of Crustacean Biology*, 21: 506–520.
- Osawa, M., 2007a. A new species of *Polyonyx* Stimpson, 1858 (Crustacea: Decapoda: Anomura: Porcellanidae) from the Philippines and Loyalty Islands. *Zootaxa*, 1450: 21–29.
- Osawa, M., 2007b. Porcellanidae (Crustacea: Decapoda: Anomura) from New Caledonia and Loyalty Islands. *Zootaxa*, 1548: 1–49.
- Osawa, M., 2009. New records of three species of the genus *Enosteoides* Johnson, 1970 (Decapoda: Anomura: Porcellanidae) from Japan, with description of a new species. *Bulletin of the National Museum of Nature and Science, A (Zoology)*, Supplement, 3: 157–166.
- Osawa, M. & T-Y. Chan, 2010. Porcellanidae (Porcelain crabs). In: Chan, T-Y., *Crustacean Fauna of Taiwan: Crab-like Anomurans (Hippoidea, Lithodoidea, Porcellanidae)*. National Taiwan Ocean University, Keelung. Pp. 67–181.
- Osawa, M. & Y. Fujita, 2001. A new species of the genus *Neopetrolisthes* Miyake, 1937 (Crustacea: Decapoda: Porcellanidae) from the Ryukyu Islands, southwestern Japan. *Proceedings of the Biological Society of Washington* 114: 162–171.
- Osawa, M. & Y. Fujita, 2005. A new species of *Lissoporcellana* (Crustacea: Decapoda: Anomura: Porcellanidae) from Okinawa, southwestern Japan. *Zootaxa*, 1038: 53–63.
- Osorio, B., 1887. Liste des Crustacés des possessions portugaises d'Afrique occidentale dans les collections du Muséum d'Histoire naturelle de Lisbonne. *Jornal de Sciencias Mathematicas, Physicas, e Naturaes*, 11: 220–231.
- Osorio, B., 1889. Nouvelle contribution pour la connaissance de la faune carcinologique des îles Saint-Thomé et du Prince. *Jornal de Sciencias Mathematicas, Physicas, e Naturaes*, (2)1: 129–139.
- Owen, R., 1839. Crustacea. In: *The zoology of Captain Beechey's voyage; compiled from the collections and notes made by Captain Beechey, the officers and naturalist of the expedition, during a voyage to the Pacific and Behring's Straits performed in His Majesty's ship Blossom, under the command of Captain F. W. Beechey, R.N., F.R.S., in the years 1825, 26, 27 and 28*. Henry G. Bohn, London. Pp. 77–92.
- Paul'son, O., 1875. *Izsledovaniya rakoobraznykh krasnago morya s zametkami otositel'no rakoobraznykh drugikh morei. Chast' I. Podophthalmata i Edriophthalmata (Cumacea)*. S.V. Kul'zhenko, Kiev. 144 pp. [Studies on Crustacea of the Red Sea with notes regarding other seas. Part I. Podophthalmata and Edriophthalmata (Cumacea).] English translation by the Israel Program for Scientific Translations, Jerusalem, 1961. National Science Foundation and Smithsonian Institution.
- Pennant, T., 1777. Crustacea, Mollusca, Testacea. *British Zoology*, edition 5, 4: 1–136. London.
- Pérez-Losada, M., C. G. Jara, G. Bond-Buckup, M. L. Porter & K. A. Crandall, 2002. Phylogenetic position of the freshwater anomuran family Aeglidae. *Journal of Crustacean Biology*, 22: 670–676.
- Philippi, R. A., 1860. *Reise durch die wueste Atacama auf Befehl der chilenischen Regierung im Sommer 1853–54 unternommen und beschrieben*. Halle, Eduard Anton. 192 pp. (+ Florula Atacamensis, 62 pp.).
- Poepping, E., 1836. Crustacea chilensia nova aut minus nota. *Archiv für Naturgeschichte*, 2: 133–145.
- Randall, J. W., 1840. Catalogue of the Crustacea brought by Thomas Nuttall and J. K. Townsend, from the west coast of North America and the Sandwich Islands, with descriptions of such species as are apparently new, among which are included several species of different localities, previously existing in the collection of the Academy. *Journal of the Academy of Natural Sciences of Philadelphia*, 8: 106–147.
- Rathbun, M. J., 1900. Results of the Branner-Agassiz Expedition to Brazil. I. The decapod and stomatopod Crustacea. *Proceedings of the Washington Academy of Sciences*, 2: 133–156.
- Rathbun, M. J., 1910. The stalk-eyed Crustacea of Peru and the adjacent coast. *Proceedings of the United States National Museum*, 38: 531–620.
- Richters, F., 1880. Decapoda. In: Moebius, K., *Beiträge zur Meeresfauna der Insel Mauritius und der Seychellen*, 3: 137–179. Gutmann, Berlin.
- Risso, A., 1816. *Histoire naturelle des Crustacés des environs de Nice*. Librairie Grecque-Latine-Allemande, Paris. 175 pp.
- Rodriguez, I. T., G. Hernandez, & D. L. Felder, 2005. Review of the Western Atlantic Porcellanidae (Crustacea: Decapoda: Anomura) with new records, systematic observations, and

- comments on biogeography. *Caribbean Journal of Science*, **41**: 544–582.
- Rodríguez, I. T., G. Hernández, & D. L. Felder, 2006. Phylogenetic relationships among western Atlantic Porcellanidae (Decapoda: Anomura), based on partial sequences of the mitochondrial 16S rRNA gene, with comments on morphology. In: Asakura, A., *Biology of Anomura II. Crustacean Research*, special number 6: 151–166.
- Rodríguez, I. T., G. Hernández, I. Magán, J. A. Bolaños, & D. L. Felder, 2004. Larval development of *Pachycheles serratus* (Decapoda: Anomura: Porcellanidae) under laboratory conditions, with notes on the larvae of the genus. *Journal of Crustacean Biology*, **24**: 291–308.
- Rodrigues da Costa, H., 1960. *Pachycheles haigae* nueva especie de la familia Porcellanidae (Crustacea, Anomura). *Neotropica*, **6**(19): 21–24.
- Rodrigues da Costa, H., 1968. Novas espécies de Porcellanidae brasileiros (Crustacea, Anomura). *Annales do Academia Brasileira de Ciências*, **40**:405–406.
- Saint Joseph, Baron de, 1900. Sur quelques invertébrés marins des côtes du Sénégal. *Annales des Sciences Naturelles, Zoologie*, (8)**12**: 217–248.
- Samouelle, G., 1819. *The Entomologists Useful Compendium; or an introduction to the knowledge of British insects, comprising the best means of obtaining and preserving them, and a description of the apparatus generally used; together with the genera of Linné, and the modern method of arranging the classes Crustacea, Myriapoda, Spiders, Mites and Insects, from their affinities and structure, according to the views of Dr. Leach. Also an explanation of the terms used in entomology; a calendar of the times of appearance and usual situations of near 3,000 species of British insects; with instructions for collecting and fitting up objects for the microscope.* London. 496 pp.
- Sankarankutty, C., 1961. On a new genus of Porcellanidae (Crustacea - Anomura). *Journal of the Marine Biological Association of India*, **3**: 92–95.
- Sankarankutty, C., 1963. On three species of porcellanids (Crustacea Anomura) from the Gulf of Mannar. *Journal of the Marine Biological Association of India*, **5**: 273–279.
- Sankolli, K. N., 1963. On a new species of the porcellanid crab (Decapoda, Anomura) from India. *Journal of the Marine Biological Association of India*, **5**: 280–283.
- Sankolli, K. N., 1965. On a new species of comensal porcellanid crab, *Polyonyx loimicola* sp. nov., from India (Crustacea, Anomura, Porcellanidae). *Journal of the Bombay Natural History Society*, **62**: 285–291.
- Saussure, H. de, 1853. Description de quelques crustacés nouveaux de la côte occidentale du Mexique. *Revue et Magasin de Zoologie pure et appliquée*, (2)**5**: 354–368.
- Say, T., 1818. Appendix to the account of the Crustacea of the United States. *Journal of the Academy of Natural Sciences, Philadelphia*, **1**: 445–458.
- Schmitt, W. L., 1921. The marine decapod Crustacea of California with special reference to the decapod Crustacea collected by the United States Bureau of Fishery steamer “Albatross” in connection with the biological survey of San Francisco Bay during the years 1912–1913. *University of California Publications in Zoology*, **23**: 1–470.
- Schmitt, W. L., 1924. The macruran, anomuran and stomatopod Crustacea. Bijdragen tot de kennis der fauna von Curaçao. Resultaten eener reis van Dr. C. J. van der Horst, in 1920. *Bijdragen tot de Dierkunde*, **23**: 61–81.
- Sivertsen, E., 1933. The Norwegian Zoological Expedition to the Galapagos Islands 1925, conducted by Alf Wollebaek. VII. Littoral Crustacea Decapoda from the Galapagos Islands. *Meddelelser fra det Zoologiske Museum, Oslo*, **38**: 1–23.
- Smith, S. I., 1869. Notice of the Crustacea collected by Prof. C. F. Hartt on the coast of Brazil in 1867. *Transactions of the Connecticut Academy of Arts and Sciences*, **2**: 1–41.
- Southwell, T., 1909. Report on the Anomura collected by Mr. James Hornell at Okhamandal in Kattiawar in 1905–6. In: Hornell, J., *Report to the Government of Baroda on the marine ecology of Okhamandal in Kattiawar*. Part I. London, Williams & Norgate. Pp. 105–123.
- Stillman, J. H. & C. A. Reeb, 2001. Molecular phylogeny of eastern Pacific porcelain crabs, genera *Petrolisthes* and *Pachycheles*, based on the mtDNA 16S rDNA sequence: phylogeographic and systematic implications. *Molecular Phylogenetics and Evolution*, **19**: 236–245.
- Stimpson, W., 1857. Notices of new species of Crustacea of western North America; being an abstract from a paper to be published in the Journal of the Society. *Proceedings of the Boston Society of Natural History*, **6**: 84–89.
- Stimpson, W., 1858. Prodromus descriptionis animalium evertibratorum, quae in Expeditione ad Oceanum Pacificum Septentrionalem, a Republica Federata missa, Cadwaladaro Ringgold et Johanne Rodgers Ducibus, observavit et descripsit. Pars VII. Crustacea Anomura. [Preprint (December 1858) from] *Proceedings of the Academy of Natural Sciences of Philadelphia*, **1858**: 225–252.
- Stimpson, W., 1859. Notes on North American Crustacea, No. 1. [Preprint from] *Annals of the Lyceum of Natural History, New York*, **7**[1962]:49–93.
- Stimpson, W., 1860. A trip to Beaufort, N. Carolina. *American Journal of Science and Arts*, **29**: 442–445.
- Stimpson, W., 1871. Notes on North American Crustacea, in the museum of the Smithsonian Institution. No. III. *Annals of the Lyceum Natural History, New York*, **10**: 92–136.
- Stimpson, W., 1907. Report on the Crustacea (Brachyura and Anomura) collected by the North Pacific Exploring Expedition, 1853–1856. *Smithsonian Miscellaneous Collections*, **49**: 1–240.
- Streets, T. H., 1871. Descriptions of five new species of Crustacea from Mexico. *Proceedings of the Academy of Natural Sciences, Philadelphia*, **23**: 225–227.
- Streets, T. H., 1872. Notice of some Crustacea from the island of St. Martin, W. I., collected by Dr. Van Rijgersma. *Proceedings of the Academy of Natural Sciences, Philadelphia*, **24**: 131–134.
- Torrallas, F., 1917. Contribución al Estudio de los Crustáceos de Cuba. Notas del Dr. Juan Gundlach † 1896 compiladas y completadas por el Dr. José. I. Torralbas † 1903. *Anales de la Academia de Ciencias Médicas, Físicas y Naturales de la Habana*, **53**: 543–624. [pages 1–92 on separate, with index to plates; portions originally published in *Anales de la Academia de Ciencias de la Habana*, volume 36 (1900) and volume 37 (1900–1901)]
- d’Udekem d’Acoz, C., 1999. Inventaire et distribution des crustacés décapodes de l’Atlantique nord-oriental de la Méditerranée et des eaux continentales adjacentes au nord de 25°N. *Patrimoines Naturels (MNHN/SPN)*, **40**:1–383.
- Veloso, V. G. & G. A. S. de Melo, 1993. Taxonomia distribuição da família Porcellanidae (Crustacea, Decapoda, Anomura) no litoral brasileiro. *Iheringia, Serie Zoologia*, **75**: 171–186.

- Verrill, A. E., 1908. Geographical distribution; origin of the Bermudian decapod fauna. *The American Naturalist*, **42**: 289–296.
- Walker, A. O., 1887. Notes on a collection of Crustacea from Singapore. *Journal of the Linnean Society of London, Zoology*, **20**: 107–117.
- Ward, M., 1942. Notes on the Crustacea of the Desjardins Museum, Mauritius Institute, with descriptions of new genera and species. *Bulletin of the Mauritius Institute*, **2**(2): 49–109.
- Wear, R. G., 1965. Larvae of *Petrocheles spinosus* Miers, 1876 (Crustacea, Decapoda, Anomura) with keys to New Zealand porcellanid larvae. *Transactions of the Royal Society of New Zealand, Zoology*, **5**: 147–168.
- Werding, B., 1978. Eine Porzellanide, *Petrolisthes magdalenensis* n. sp. von der karibischen Küste Kolumbiens (Crustacea: Decapoda: Anomura). *Senckenbergiana Biologica*, **59**: 307–310.
- Werding, B., 1982. Porcellanid crabs of the Islas del Rosario, Caribbean coast of Colombia, with a description of *Petrolisthes rosariensis* new species (Crustacea: Anomura). *Bulletin of Marine Science*, **32**: 439–447.
- Werding, B., 1983. Der *Petrolisthes galathinus*-Artenkomplex im karibischen Raum mit Beschreibung von *P. caribensis* n. sp. und *P. columbiensis* n. sp. (Crustacea: Anomura: Porcellanidae). *Senckenbergiana Biologica*, **63**: 407–418.
- Werding, B., 1986. Die Gattung *Neopisosoma* Haig, 1960 im tropischen Westatlantik, mit der Beschreibung von *Neopisosoma neglectum* spec. nov. und *Neopisosoma orientale* spec. nov. (Crustacea: Anomura: Porcellanidae). *Zoologische Mededelingen, Leiden*, **16**: 159–179.
- Werding, B., 1996. Description of a new porcellanid, *Petrolisthes gertrudae* from the southeastern Caribbean Sea (Crustacea: Decapoda: Porcellanidae). *Proceedings of the Biological Society of Washington*, **109**: 306–310.
- Werding, B., 2001. Description of two new species of *Polyonyx* Stimpson, 1858 from the Indo-West Pacific, with a key to the species of the *Polyonyx sinensis* group (Crustacea: Decapoda: Porcellanidae). *Proceedings of the Biological Society of Washington*, **114**: 109–119.
- Werding, B. & J. Haig, 1983. The porcellanid crabs of Isla Gorgona, Pacific coast of Colombia, with a description of *Clastoetochus gorgonensis* sp. nov. (Crustacea; Anomura). *Annales de Instituto de Investigaciones Marinas de Punta de Betin*, **12** (1982): 57–70.
- Werding, B. & A. Hiller, 2002. A new species of the *Petrolisthes galathinus* complex from the southern Caribbean sea, with a discussion on the identity of *P. galathinus* (Bosc, 1802) (Decapoda, Porcellanidae). *Crustaceana*, **75**: 849–857.
- Werding, B. & A. Hiller, 2004. Description of a new species of *Petrolisthes* from the western Pacific (Decapoda, Anomura, Porcellanidae). *Crustaceana*, **77**: 257–264.
- Werding, B. & A. Hiller, 2005. A new porcellanid species from the Caribbean Sea, with a discussion on the American “*Petrolisthes lewisi*-group” (Decapoda, Anomura, Porcellanidae). *Crustaceana*, **77**: 1185–1190.
- Werding, B. & A. Hiller, 2007. The Porcellanidae (Crustacea: Decapoda: Anomura) of the Red Sea with description of a new species of *Petrolisthes*. *Zootaxa*, **1460**: 1–24.
- Werding, B., A. Hiller, & B. Misof, 2001. Evidence of parphyly in the neotropical porcellanid genus *Neopisosoma* (Crustacea: Anomura: Porcellanidae) based on molecular characters. *Hydrobiologia*, **449**: 105–110.
- Werding, B. & H. Kraus, 2003. A new species of the *Petrolisthes galathinus* species complex from the southern Caribbean Sea (Decapoda, Anomura, Porcellanidae). *Crustaceana*, **75**: 1141–1147.
- Werding, B. & H. G. Müller, 1990. Larval development of *Neopisosoma neglectum* Werding, 1986 (Decapoda: Anomura: Porcellanidae) under laboratory conditions. *Helgoländer Meeresuntersuchungen*, **44**: 363–374.
- White, A., 1847. *List of the specimens of Crustacea in the collection of the British Museum*. British Museum. London. 143 pp.
- White, A., 1852. Descriptions of some apparently new species of annulosa, (collected by Mr. Macgillivray during the voyage of H.M.S. Rattlesnake). In: Macgillivray, J., *Narrative of the voyage of H.M.S. Rattlesnake, commanded by the late Captain Owen Stanley, R.N., F.R.S., &c. during the years 1846–1850. Including discoveries and surveys in New Guinea, the Louisiade Archipelago, etc. to which is added the account of Mr. E.B. Kennedy's expedition for the exploration of the Cape York Peninsula*. **2**: 387–395. Boone, London.
- Whitelegge, T., 1897. The Crustacea of Funafuti. In: The atoll of Funafuti, Ellice Group: its Zoology, Botany, Ethnology, and general structure based on collections made by Mr. Charles Hedley, of the Australian Museum, Sydney, N.S.W. *Memoirs of the Australian Museum*, **3**: 125–151.
- Yang, S., 1996. New species and new records of porcellanids crabs (Crustacea: Decapoda: Anomura) from Nansha Islands, China. *Studies on marine fauna and flora and biogeography of the Nansha Islands and neighboring waters*, **2**: 258–269. (In Chinese with English summary)
- Yang, S. & X. Sun, 1985. A new species of Porcellanidae (Crustacea: Anomura) from China. *Acta Zoologica Sinica*, **31**: 150–153.
- Yang, S. & X. Sun, 1990. On the porcellanid crabs from the coast of Fujian Province, China. *Memoirs of Beijing Natural History Museum*, **45**: 1–15. (In Chinese with English summary)
- Yang, S. & X. Sun, 1992. On the porcellanid crab (Anomura: Porcellanidae) of Guangxi Province, China. *Transactions of the Chinese Crustacean Society*, **3**: 196–213. (In Chinese with English summary).
- Yang, S. & X. Sun, 2005. The Porcellanidae (Crustacea: Anomura) of Hainan Island, China with description of a new species. *Natural Sciences and Museums*, **1**: 1–30.
- Yang, S. & Z. Xu, 1994. Study on the Porcellanidae (Crustacea, Anomura) from Nansha Islands and its adjacent waters. *Studies on marine fauna and flora and biogeography of the Nansha Islands and neighboring waters*, **1**: 112–124. (In Chinese with English summary).
- Young, C. G., 1900. *The stalk-eyed Crustacea of British Guiana, West Indies, and Bermuda*. London. 514 pp.
- Zariquiey Álvarez, R., 1968. Crustaceos decapodos Ibericos. *Investigacion Pesquera*, **32**: 1–510.
- Zehntner, L., 1894. Crustacés de l'Archipel malais. Voyage de MM. M. Bedot et C. Pictet dans l'Archipel malais. *Revue Suisse de Zoologie et Annales du Musée d'Histoire Naturelle de Genève*, **2**: 135–214.

Fig. 1. Galatheoidea. Representatives of Family Porcellanidae Haworth, 1825 (A, C, in situ): A, *Aliaporcellana* cf. *suluensis* (Dana, 1852), Wakayama Prefecture, Japan (M. Mitsugi); B, *Enosteoides lobatus* Osawa, 2009, Ryukyu Islands, Japan (M. Osawa); C, *Lissoporcellana flagellicola* Osawa & Fujita, 2005, Ryukyu Islands, Japan (M. Osawa); D, *Neopetrolisthes maculatus* (H. Milne Edwards, 1837), Philippines (T.-Y. Chan); E, *Novorostrum indicum* (De Man, 1893), Ryukyu Islands, Japan (M. Osawa); F, *Pachycheles garciaensis* (Ward, 1942), Ryukyu Islands, Japan (M. Osawa); G, *Pachycheles pisoides* (Heller, 1865), Ryukyu Islands, Japan (M. Osawa); H, *Petrolisthes asiaticus* (Leach, 1820), Ryukyu Islands, Japan (M. Osawa); I, *Petrolisthes celebesensis* Haig, 1981, Ryukyu Islands, Japan (M. Osawa).

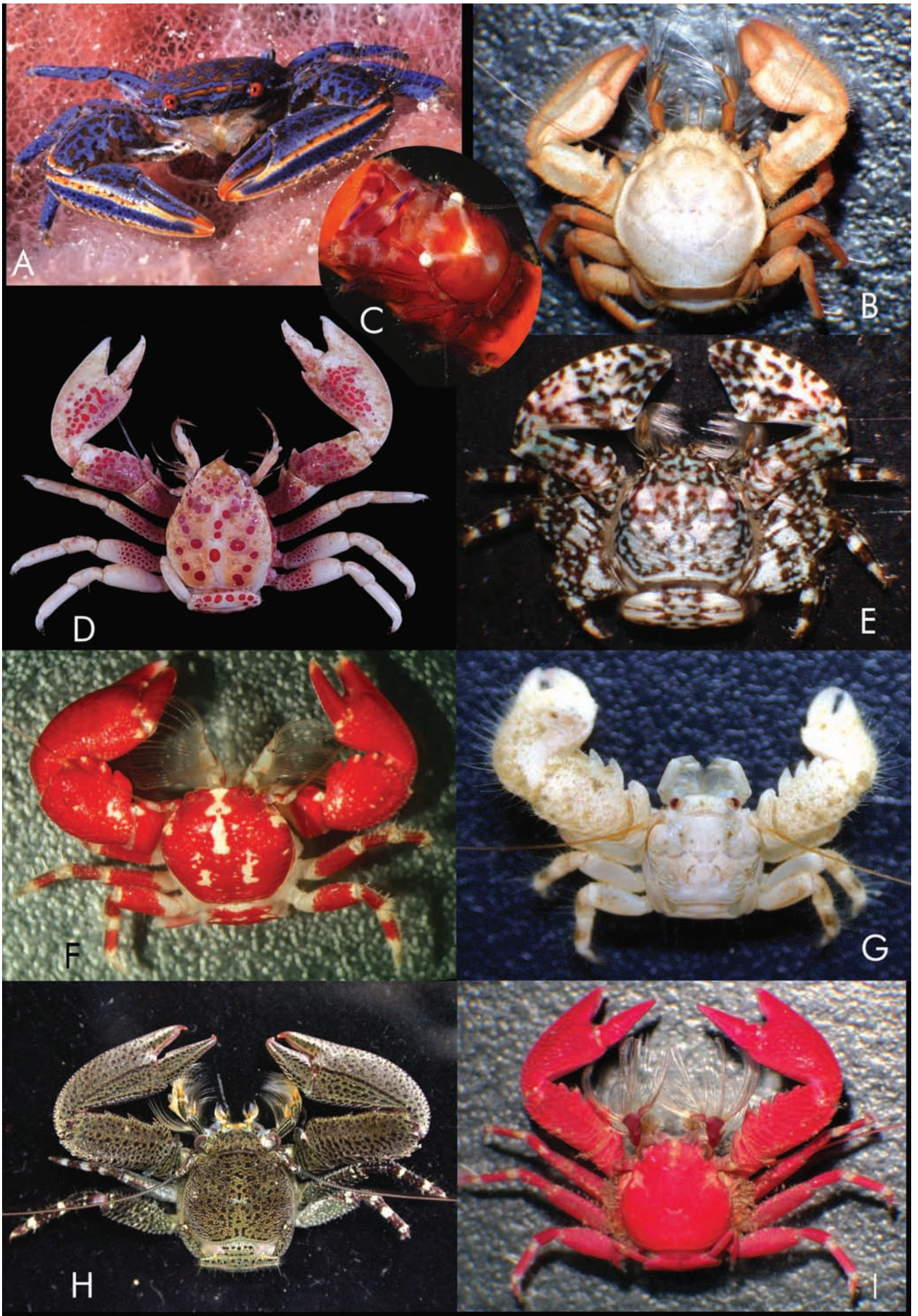


Fig. 2. Galatheoidea. Representatives of Family Porcellanidae Haworth, 1825: A, *Petrolisthes* cf. *lamarckii* (Leach, 1820), Ryukyu Islands, Japan (M. Osawa); B, *Petrolisthes moluccensis* (De Man, 1888), Ryukyu Islands, Japan (M. Osawa); C, *Petrolisthes obtusifrons* Miyake, 1937, Ryukyu Islands, Japan (M. Osawa); D, *Petrolisthes pubescens* Stimpson, 1858, Ryukyu Islands, Japan (M. Osawa); E, *Petrolisthes tomentosus* (Dana, 1852), Ryukyu Islands, Japan (M. Osawa); F, *Petrolisthes virgatus* Paul'son, 1875, Ryukyu Islands, Japan (M. Osawa); G, *Pisidia dispar* (Stimpson, 1858), Ryukyu Islands, Japan (M. Osawa); H, *Porcellana habei* Miyake, 1961, Lembeh, Indonesia, shown on shell occupied by *Dardanus pedunculatus* (Herbst, 1804) (T. Smit).

