



LJMU Research Online

Smith, D, Abeli, T, Bruns, EB, Dalrymple, SE, Foster, J, Gilbert, TC, Hogg, CJ, Lloyd, NA, Meyer, A, Moehrensclager, A, Murrell, O, Rodriguez, JP, Smith, PP, Terry, A and Ewen, JG

Extinct in the wild: The precarious state of Earth's most threatened group of species

<http://researchonline.ljmu.ac.uk/id/eprint/19540/>

Article

Citation (please note it is advisable to refer to the publisher's version if you intend to cite from this work)

Smith, D, Abeli, T, Bruns, EB, Dalrymple, SE, Foster, J, Gilbert, TC, Hogg, CJ, Lloyd, NA, Meyer, A, Moehrensclager, A, Murrell, O, Rodriguez, JP, Smith, PP, Terry, A and Ewen, JG (2023) Extinct in the wild: The precarious state of Earth's most threatened group of species. Science. 379 (6634). ISSN

LJMU has developed **LJMU Research Online** for users to access the research output of the University more effectively. Copyright © and Moral Rights for the papers on this site are retained by the individual authors and/or other copyright owners. Users may download and/or print one copy of any article(s) in LJMU Research Online to facilitate their private study or for non-commercial research. You may not engage in further distribution of the material or use it for any profit-making activities or any commercial gain.

The version presented here may differ from the published version or from the version of the record. Please see the repository URL above for details on accessing the published version and note that access may require a subscription.

For more information please contact researchonline@ljmu.ac.uk

<http://researchonline.ljmu.ac.uk/>

1
2
3
4
5
6
7
8
9
10
11
12
13
14
15
16
17
18

**Extinct in the Wild: The precarious state of the most threatened group of
species on Earth**

Authors: Donal Smith^{1*}, Thomas Abeli^{2,3}, Emily Beckman Bruns^{4,5}, Sarah E. Dalrymple^{3,6},
Jeremy Foster^{4,5}, Tania C. Gilbert^{3,7,8}, Carolyn J. Hogg^{3,9}, Natasha A. Lloyd^{3,10}, Abby Meyer⁴,
Axel Moehrenschrager^{3,10}, Olivia Murrell⁵, Jon Paul Rodriguez^{11,12}, Paul P. Smith¹³, Andrew
Terry¹⁴, John G. Ewen^{1,3}

Affiliations:

- ¹Institute of Zoology, Zoological Society of London; London, UK.
- ²Department of Science, University of Roma Tre; Roma, Italy.
- ³IUCN SSC Conservation Translocation Specialist Group; Calgary, Canada
- ⁴Botanic Gardens Conservation International-US; San Marino, USA.
- ⁵Chicago Botanic Gardens; Chicago, USA.
- ⁶School of Biological and Environmental Sciences, Liverpool John Moores University;
Liverpool, UK.
- ⁷Marwell Wildlife; Hampshire, UK.

19 ⁸School of Biological Sciences, University of Southampton; Southampton, UK.

20 ⁹Faculty of Science, School of Life and Environmental Sciences, The University of Sydney;
21 Sydney, Australia.

22 ¹⁰Wilder Institute / Calgary Zoo; Calgary, Canada.

23 ¹¹IUCN Species Survival Commission; Caracas, Venezuela.

24 ¹²Instituto Venezolano de Investigaciones Científicas, and Provita; Caracas, Venezuela.

25 ¹³Botanic Gardens Conservation International; Surrey, UK.

26 ¹⁴Zoological Society of London; London, UK.

27

28 *Corresponding author. Email: donal.smith@ioz.ac.uk

29 **Teaser:** A review of the hitherto overlooked statuses of Extinct in the Wild species reveals the
30 perilous nature of the category.

31

32 **Abstract:** Extinct in the Wild (EW) species are placed at the highest risk of extinction under the
33 International Union for Conservation of Nature Red List, but the extent and variation in this risk
34 has never been evaluated. Harnessing global databases of *ex situ* animal and plant holdings, we
35 report on the perilous state of EW species. Most EW animals, already compromised by their
36 small number of founders, are maintained at sizes far below the thresholds necessary to ensure

37 demographic security. Most EW plant species depend on live propagation by a small number of
38 holders, with a minority secured at seed bank institutions. We show that both extinctions and
39 recoveries are possible fates for EW species, and urgently call for international effort to drive
40 toward the latter.

41

42 **Main Text:**

43 Despite a deepening crisis of species loss unprecedented in human history (1, 2), international
44 commitments to prevent extinction and improve the conservation status of all known threatened
45 species have not been met (3). The field of conservation biology has, however, begun to
46 demonstrate that the status of threatened species can be improved, and extinctions in the wild
47 prevented and even reversed (4–6). These successes should encourage us that the post-2020
48 global biodiversity draft targets of arresting the increase in extinction rates and reducing the
49 proportion of threatened species are within our capacity (7). A striking nexus of responsibility,
50 vulnerability, and opportunity lies in those species that—having been entirely extirpated in the
51 wild—exist solely in zoos, aquariums, botanical gardens, or seed banks i.e., those that qualify for
52 the International Union for Conservation of Nature Red List of Threatened Species (Red List)
53 category of Extinct in the Wild (EW) (8).

54 These organisms occupy a curiously overlooked space in our framework for evaluating and
55 comparing risk of extinction. They are considered to be the species most at risk (8), but the
56 viability of their populations is not assessed, nor, puzzlingly, is EW even classed as a
57 “threatened” category. Beyond the recognition of the existence of *ex situ* populations for
58 conferral of EW status, the Red List assessment process concerns itself solely with wild
59 populations (8). Thus, while many extant species can be evaluated in detail and allocated threat
60 categories according to the states of and trends in their geographic ranges and populations, we
61 have so far ignored the extent of—and variation in—extinction risk of the very group of species
62 for which humans are most responsible, and whose futures are amongst the least assured.

63 Here, we reveal the dynamic and often perilous state occupied by EW species. Though the EW
64 category was first introduced by the IUCN in 1994 (9), we extend our analysis back to 1950 to
65 provide an overview of the fates of the 96 species (53 animals and 43 plants) that are known to
66 have persisted despite extirpation in the wild. We characterise the statuses of the *ex situ*
67 populations of the 82 species (38 animals and 44 plants) that are currently (Red List version
68 2022-1 (8)) categorised as EW, as well as detailing their progress towards recovery through
69 returns to the wild. We found that 10 species (five animals and five plants) currently regarded as
70 EW should not qualify for the category: Two have gone extinct since their last assessment, three
71 are likely extant in the wild having never been extirpated, three are synonyms of species that
72 remain extant in the wild, and the statuses of two are unknown (Tables S5 and S6). This leaves
73 72 EW species (33 animals and 39 plants) we regard here as genuine.

74 To best contribute to eventual recovery in the wild, an *ex situ* population should be established
75 using a representative set of founders, be maintained at a population size sufficient to minimise
76 loss of genetic diversity, and spend as little time as practicable solely in an *ex situ* state (10, 11).
77 We found considerable variation and alarming deficiencies in these critical factors amongst EW
78 species. A minimum of between 30 and 50 individuals is recommended to found an *ex situ*
79 population to capture an adequate representation of the genetic diversity of the wild population
80 (10, 11). Most currently EW animal populations for which such information is available (eight of
81 13) were founded by fewer than 30 individuals, and amongst the less well documented plants we
82 report that at least seven of 40 EW populations were founded by just a single individual (Table
83 1). Most *ex situ* populations of EW species were thus imperiled to begin with, and require large

84 populations to enhance demographic security and reach a point at which populations can be
85 maintained to minimize loss of the genetic diversity that remains (Fig. 3A).

86 What constitutes a size above which a population is considered viable is highly context specific,
87 depending on the biology of the species, aspects of its management and environment, as well as
88 varying definitions of “viable” (12). Meta-analyses of minimum viable population sizes
89 calculated across hundreds of species have reported medians of 1377 (for a 90% probability of
90 persistence over 100 years) (13), 4169 (standardised to a 99% probability of persistence over 40
91 generations) (14), and 5816 (for a 99% probability of persistence over 40 generations in
92 vertebrate species) (15), with wide and positively-skewed distributions. Considering the
93 maintenance of genetic diversity for a context in which supplementation from elsewhere (i.e., the
94 wild) is impossible, an effective population size (N_e) of at least 500 is thought to be required for
95 even well-founded populations to avert the loss of genetic diversity, and it has been argued that
96 $N_e = 1000$ is a better approximation to maintain evolutionary potential (16). Given that the ratio
97 of effective population size to census population size (N_e/N) has been estimated to average 0.26
98 in *ex situ* populations of threatened animals (17), this implies that most populations should
99 exceed 1900 individuals at the very least (18). These figures do not represent universal
100 thresholds delineating viable populations from lost causes, rather standards that enable us to
101 highlight populations that may be at risk, and thus demanding of our attention. In this light, the
102 shortfall for EW species is stark: population estimates are not available for plants, but of the 30
103 EW animal species currently maintained in *ex situ* institutions for which we could find data, just

104 6 have populations exceeding 1900 individuals, and half have census population sizes lower even
105 than the minimum advised N_e of 500 (Fig. 1).

106

107 On the other hand, *ex situ* populations that do manage to reach larger sizes are further challenged
108 by adaptation to the conditions of *ex situ* care (19, 20), creating a trade-off between demographic
109 security and the suitability of individuals for release. Distributing populations across multiple
110 collections may help mitigate against such adaptation (21) and provide a buffer against
111 institutional-level risks such as disease outbreaks, catastrophes, and the financial insecurity and
112 logistical challenges deepened by the impacts of COVID-19 (19, 22). Again, worryingly, the
113 majority of animal (at least 23/30, 77%) and plant (20/37, 54%) EW species for which
114 information is available are held at fewer than 10 institutions, and six plant species are held at
115 just a single institution (Fig. 2).

116

117 However, distributing an EW species across several holders brings with it the potential of
118 fragmenting an already compromised population into a set of smaller isolated groups. For *ex situ*
119 animal populations, formalised cooperative breeding programs—EAZA *Ex situ* Programmes
120 (EEPs) in Europe, Species Survival Plans (SSPs) predominantly in North America, and Species
121 Management Programs (SMPs) in Australasia—seek to manage each species as a
122 metapopulation by planning and coordinating breeding and transfers between institutions within
123 their respective regions. Global Captive Management Programs (GCMPs) have been proposed in

124 recognition of the need for overarching global management, but these have struggled to gain
125 traction, and no EW species has a GCMP despite the fact that at least eight are held across
126 multiple regions (23). Despite their obvious relevance, we find that SSPs are absent for 50%
127 (5/10) of those held at North American institutions, while EEPs are absent for 18% (5/22) of EW
128 animal species held at European institutions (Table S8). Even for species covered by a
129 cooperative breeding program, implementation of management decisions can be challenging: a
130 recent analysis found that SSP recommendations to transfer individuals were fulfilled just 57%
131 of the time, while the fulfilment rate of recommendations for specific animals to breed was even
132 lower at 20% (24). Genetic management is informed by a reliable understanding of the pedigree
133 of individuals within a population, generally recorded in a studbook. We were unable to find any
134 indication of studbooks for 31% (10/32) of EW animal species managed *ex situ* (Table S8).
135 Those missing studbooks were fish, amphibian, and invertebrate species, taxa typically housed
136 and bred in groups, a situation in which individual pedigrees are generally unavailable. However,
137 such species can still be subject to genetic management using population genetic models and
138 group-level information (25), as is deployed for the *Partula* snail species in our dataset (17, 26).
139 Management of *ex situ* plant collections is hampered by poor knowledge of the provenance of
140 populations, a limited ability to track them at an individual level, and a lack of coordination
141 across institutions (27). Efforts to address these problems and develop pedigree-based
142 metapopulation management techniques for plants are currently underway (27, 28).
143 Underpinning all of these efforts should be an examination of how populations are expected to
144 respond to current and proposed management across the coming decades. Though population
145 viability analyses were at some point carried out for at least eight currently EW species (all

146 animals), we are only aware of three that currently use these tools to inform management (Table
147 S8).

148 For some plant species, storage of propagules in seed banking facilities offers an opportunity to
149 pause generational turnover, and thus circumvent many of the processes that compromise genetic
150 viability of *ex situ* populations over time. Though not suitable for all species (29), this
151 technique—which can retain seed viability for potentially hundreds of years (30)—will be
152 crucial in ensuring that at least 75 per cent of threatened plant species are maintained *ex situ*,
153 Target 8 of the Global Strategy for Plant Conservation (31). Using a seed storage prediction
154 model (32), we found that approximately 89% (31 of 35 species modelled, see Table S9) of EW
155 plant species are predicted to produce desiccation-tolerant seeds suitable for seed banking.
156 Despite this—and while acknowledging that botanic gardens may retain some material as seed—
157 we report that only 28% (11/39) of EW plant species are represented in seed bank institutions
158 (Fig. 2).

159 Irrespective of the technique, however, *ex situ* preservation cannot prevent *in situ* change: plants
160 and animals held separate from wild environments for extended periods may not be well adapted
161 to the shifting ecosystems to which we would like to return them. Taken together, these insights
162 highlight the urgent need to find ways to re-establish populations into the wild. We find that,
163 while conservation translocations back to wild settings have been undertaken for only 26%
164 11/43) of historically (1950-2022) *ex situ*-restricted and 23% (9/39) of currently EW plant
165 species, they have been deployed for the majority of both historically *ex situ*-restricted (32/53,
166 60%) and currently EW (22/33, 67%) animal species (Fig. 3). While this is certainly

167 encouraging, it leaves 41 extant EW species (30 plants and 11 animals) that have never been
168 subject to an attempt at a return to the wild. The Socorro dove (*Zenaida graysoni*), for example,
169 collected from the wild in 1925 (33), is approaching a century—approximately 37 generations—
170 in *ex situ* care.

171 The EW state can thus represent a crucial waypoint on the pathway to recovery. Since 1950, 96
172 species (53 animals and 43 plants) have met the conditions of EW (i.e., have been restricted to *ex*
173 *situ* maintenance, Figs. 3B and 3C). 83 of these (42 animals and 41 plants) have been listed on
174 the Red List as EW. There are 12 species (10 animals and two plants) that were once extirpated
175 from the wild but are now considered to have wild populations again. These include the
176 Jaramago de Alborán (*Diplotaxis siettiana*), now Critically Endangered (CR), the Yarkon bream
177 (*Acanthobrama telavivensis*), which has been downlisted to Vulnerable, and the European Bison
178 (*Bison bonasus*), which has recovered out of the threatened categories to Near Threatened. But
179 less fortunate fates are also possible: 11 species have gone extinct having been restricted to *ex*
180 *situ* care. These include the St Helena olive (*Nesiota elliptica*) and the Pinta giant tortoise
181 (*Chelonoidis abingdonii*), both lost under our care in the last decade (Fig. 3).

182 We necessarily restricted our investigation of *ex situ* holdings to species currently assessed on
183 the Red List as EW, but this likely under-represents the true number of species that sit in this
184 category or may soon enter it. For example, a further 58 species (46 plants and 12 animals) are
185 assessed as CR (Possibly Extinct in the Wild) (8). In addition, the often slow pace of changes in
186 Red List status (34) combines with a conservative approach to declaring extinction (35) to
187 produce a considerable lag between a species last being seen in the wild and it first being listed

188 as EW: we find 11 years to be the median interval. Bearing in mind the threat of an oncoming
189 wave of extinctions over the coming decades (36), a considerable number of *ex situ*-restricted
190 species may therefore be accumulating with no reliable way of identifying them. Species that
191 have recently been claimed to probably qualify as EW but are not yet assessed as such include
192 the ‘ālua (*Brighamia insignis*), a shrub native to Hawaii and assessed as CR (Possibly Extinct in
193 the Wild), the Vietnam pheasant (*Lophura edwardsi*) (37), and the Javan pied starling
194 (*Gracupica jalla*) (38), the latter two both currently CR without the “Possibly Extinct in the
195 Wild” tag.

196 It is clear, however, that designation as EW would not facilitate the evaluation of extinction risk
197 or recovery potential. As is demonstrated in this study, the single EW category contains such
198 variability in the viability of its species as to potentially conceal the plight of the least secure.
199 Might the Catarina pupfish (*Megupsilon aporus*) be with us today had its precarious status in the
200 years running up to its demise been better characterised and communicated (39)? It is certainly
201 not credible to place such a species in the same category of extinction risk as, say, the milu (Père
202 David’s deer, *Elaphurus davidianus*) which, after over 35 years of reintroductions and
203 conservation management, numbers over 9000 individuals of varying degrees of “wildness”
204 distributed across its native range in China (40) while still being assessed as EW. An improved
205 system for assessing the health and progress of EW species would be both beneficial and
206 feasible.

207 The cases we depict chart more than 70 years of attempts to use *ex situ* conservation to prevent
208 extinction and facilitate the recovery of species on the very brink, highlighting both the fragility

209 of this space and the potential for success despite that fragility. Ensuring that the fortunes of EW
210 species continue to bend away from extinction requires a redoubling of effort and a collective
211 realisation—in the minds of the conservation community, legislators, and the public—of their
212 existence and plight. In response, the IUCN World Conservation Congress 2020 called for the re-
213 establishment of current EW species in the wild by 2030 (41). This should be coupled with the
214 identification of further currently threatened species whose recovery could be achieved through
215 *ex situ* care. We urge a forward-looking approach to rescue, revitalize, release, and reinforce
216 populations: rescue suitable species close to extinction into *ex situ* care, revitalise and strengthen
217 current *ex situ* populations to ensure continued viability, engage in ambitious and innovative
218 release programs to return species to the wild, and drive recovery of released populations
219 through continued reinforcement and management.

220 Deciding where, when, and whether to rescue species is not a trivial task and is confounded by
221 risky (that is uncertain) outcomes and strong emotions. From a biological perspective, the
222 removal of a species to *ex situ* care may be challenging such that the attempt accelerates
223 extinction and, combined with downstream consideration of the likelihood of successful wild
224 releases from *ex situ* care, should be weighed against *in situ* alternatives (42). Decisions about
225 rescue will always go beyond biological perspectives to include a mix of financial, ethical, social
226 and cultural considerations. For example, at least four Hawaiian forest bird species face
227 extinction in the coming decade as a result of avian malaria (43). The immediate removal of
228 individuals into *ex situ* care, and thus the likely creation of EW populations, is seen as the
229 management action with the highest probability of extinction avoidance for at least one of these

230 species, the ‘akikiki (*Oreomystis bairdi*), with an estimated wild population in 2021 of just 45
231 individuals (43). However, the location of *ex situ* facilities must balance Native Hawaiians’
232 preference not to remove birds from Hawai’i (43). Such multi-objective decisions are inevitable
233 in conservation and influence what alternatives are available and how a best one is selected. We
234 encourage adopting a transparent and deliberative approach to decision making on a case by case
235 basis, such that values are clearly identified and decisions are rationally made in light of these
236 (44). We must be bold and take urgent risky action, but this does not mean abandoning critically
237 important recognition of values and drawing on available science (knowledge) to inform what
238 this action is and how we best implement it. We wish to avoid cases such as the Christmas
239 Island pipistrelle (*Pipistrellus murrayi*), for which *ex situ* care was proposed and eventually
240 agreed upon, but, through delay and indecision, inaction and extinction became the action
241 inadvertently chosen (45).

242 Similarly, *ex situ* institutions must balance multiple values, of which EW species conservation is
243 just one. In most cases, revitalisation of *ex situ* EW populations will require significant
244 additional resources. This must be balanced with the contributions *ex situ* institutions also play in
245 non-EW species conservation, education, visitor experience and the space and financial
246 constraints required to deliver these. Whilst we are indebted to such institutions for being the
247 only things standing between EW species and extinction, we encourage a much more strategic
248 approach to EW species *ex situ* care whereby decision science is used to develop unified
249 management plans informed, at the least, by population viability analysis and genetic

250 management. In addition, we call on funders to support the delivery of *ex situ* care and
251 consequent recovery in the wild via release and reinforcement.

252 As recovery in the wild ought to be an ultimate objective for all EW species, management plans
253 for *ex situ* populations should be integrated with *in situ* planning, as is envisaged in the IUCN’s
254 “One Plan Approach” (46), which has not, as far as we can identify, been adopted for any EW
255 species. We acknowledge that there are many reasons why some EW species have never been
256 released into the wild. For some plants, such as the seven EW *Brugmansia* species native to
257 South America, historic wild localities are simply not known (47). For some species, such as the
258 sihek (or Guam kingfisher, *Todiramphus cinnamominus*), their indigenous range remains
259 inhospitable to their return. However, reasoned and bold actions may allow wild recovery either
260 through proactive removal of *in situ* extinction drivers, or releases beyond indigenous range (48,
261 49). For example, Christmas Island blue-tailed skinks (*Cryptoblepharus egeriae*) have been
262 released to the wild on the Cocos (Keeling) islands (50) and proposals for sihek releases on
263 Palmyra Atoll are under consideration (51). Whilst release is a landmark moment—and is rightly
264 celebrated—this should typically mark the beginning of a long-term commitment to recover the
265 species *in situ*. Pioneering work has returned 10 formerly-extirpated *Partula* snail species to the
266 Society Islands, but considerable obstacles to the recovery of many of these species remain in
267 part due to the ongoing threats posed by the non-native predatory New Guinea flatworm
268 (*Platydemus manokwari*) (52). Rather than give up, those involved in *Partula* snail recovery are
269 learning and modifying how to best attempt new releases and reinforce all wild populations.
270 With sustained support and adaptive management, the *Partulas* and others can emulate the

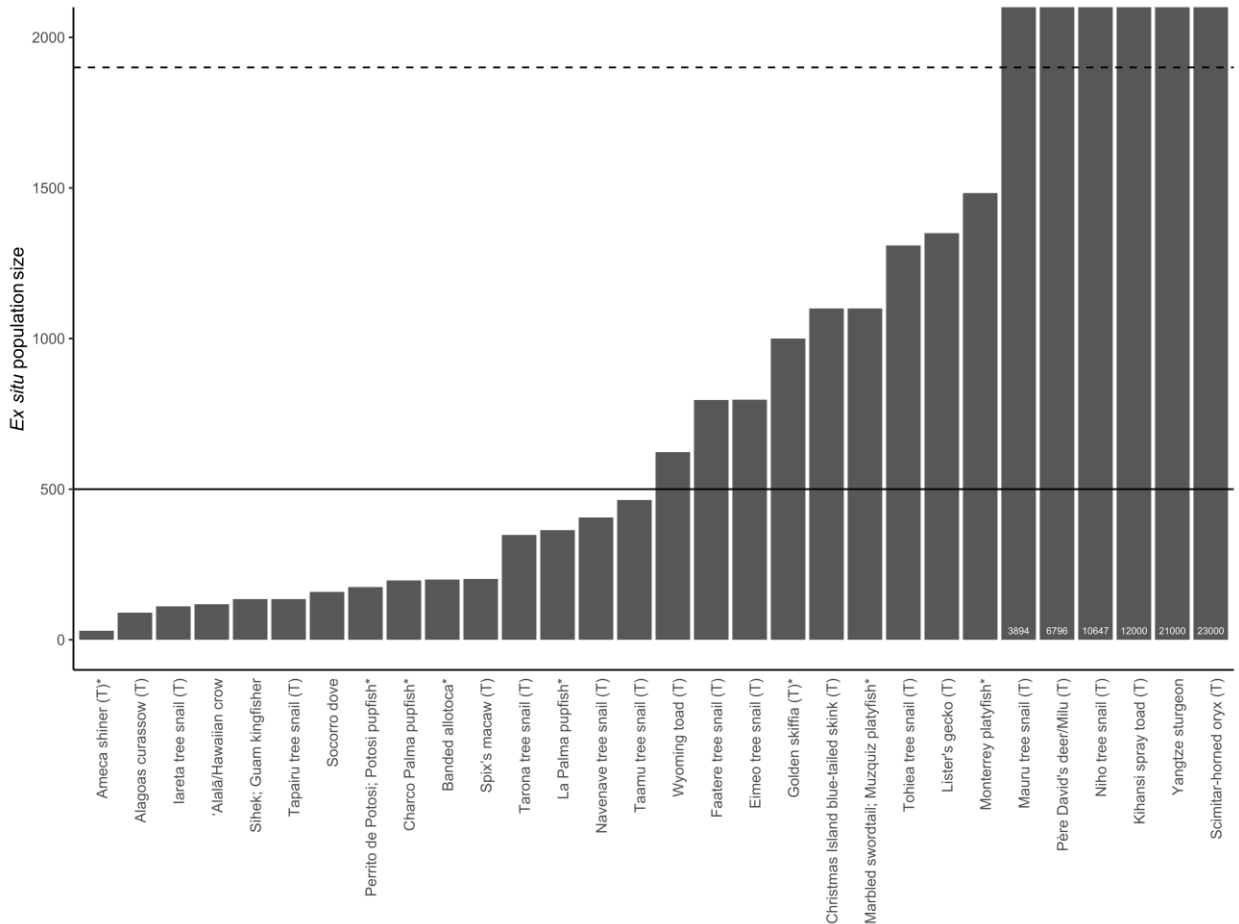
271 successful paths back to recovery in the wild forged by species such as the Yarkon bream and
 272 European bison.

273 Real opportunities to prevent extinction and return previously lost species to the wild abound.

274 We must take them.

275

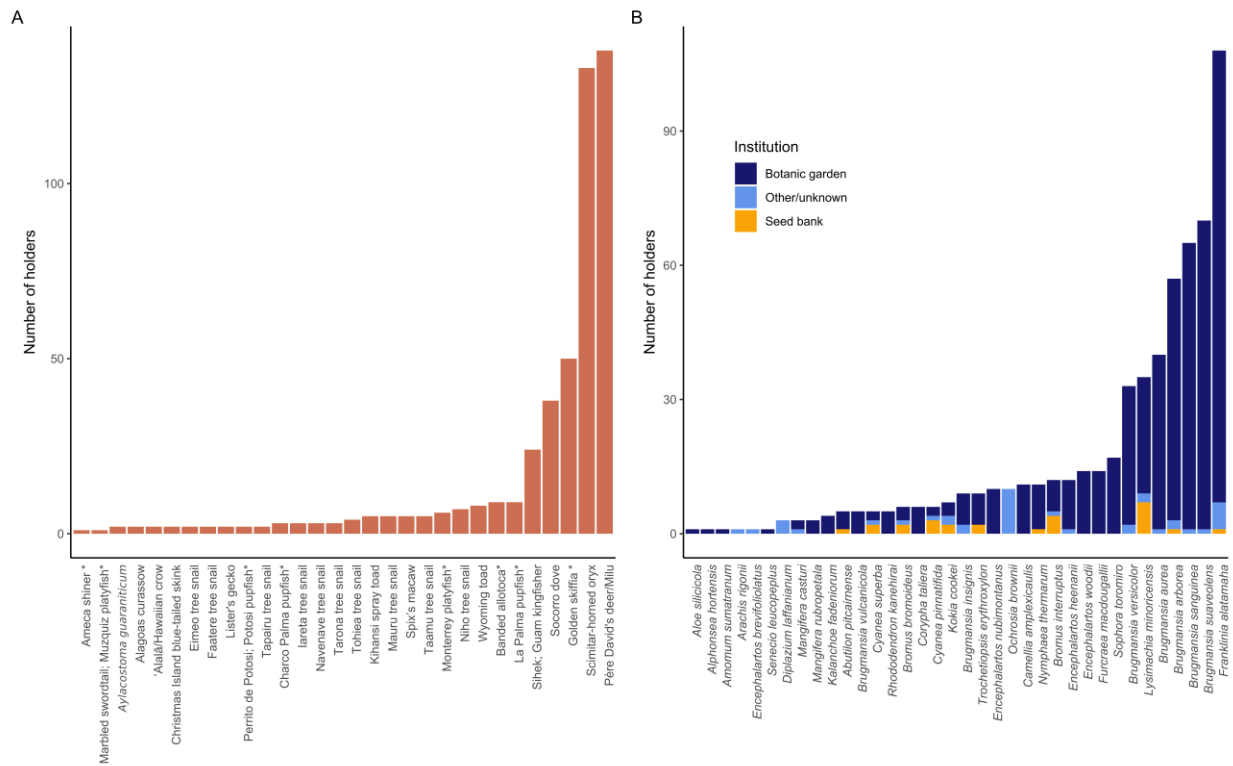
276



277

278

279 **Fig. 1. Estimated *ex situ* population sizes of EW animal species.** Solid horizontal line:
280 Minimum N_e recommended to minimise loss of genetic diversity (500). Dashed horizontal line:
281 minimum census population size expected to ensure effective population size of 500 (1900
282 individuals, see (18)). Where population sizes are above 2000, the total size is denoted at the
283 base of the bar. Population estimates are for 30 of the 32 EW animal species held *ex situ*. They
284 were compiled using Zoological Information Management System (ZIMS) (53), a database
285 representing the real-time holdings of more than 1100 zoological and aquarium collections
286 globally, combined with academic and grey literature, and advice from relevant taxon experts
287 and conservation practitioners. Species marked with an asterisk (*) may have additional
288 individuals kept by hobbyists. Species marked with (T) have additional *in situ* populations as a
289 result of conservation translocations, but these are not yet considered wild under the Red List.
290



291

292

Fig. 2. Holders of *ex situ* EW species. Panel A: Estimates number of holders for 30 of the 32

293

EW animal species held *ex situ*. Estimates produced as for Fig. 1. Species marked with an

294

asterisk (*) may have additional individuals kept by hobbyists. Panel B: Estimates for number

295

and type (botanical garden, seed bank, or unknown) of *ex situ* holders of 36 of the 39 *EW* plant

296

species. Compiled using PlantSearch, a database reporting the living plant, seed, and tissue

297

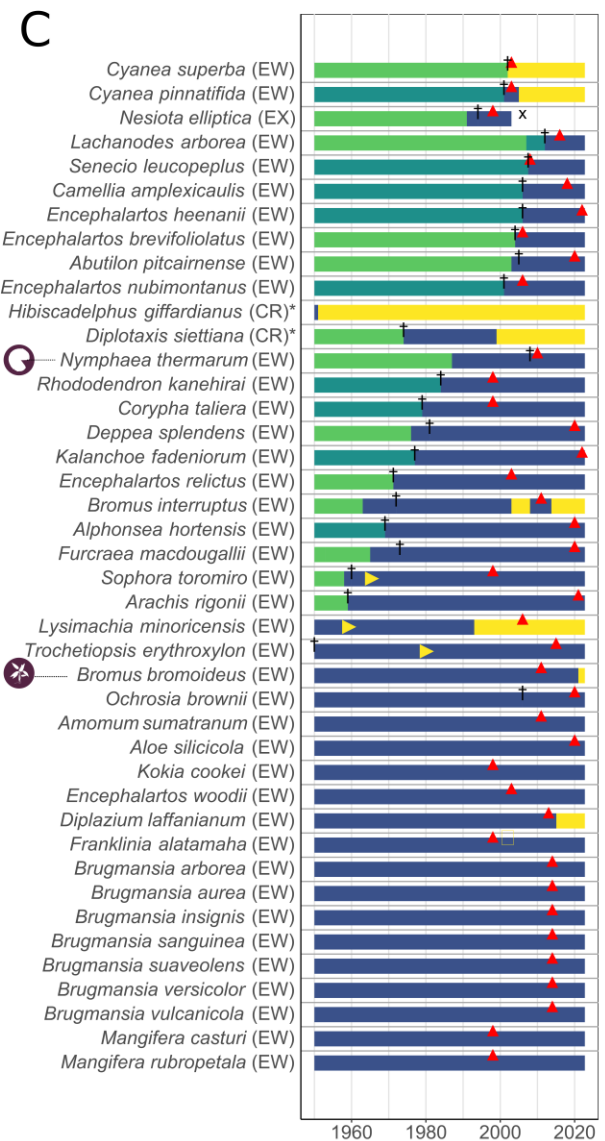
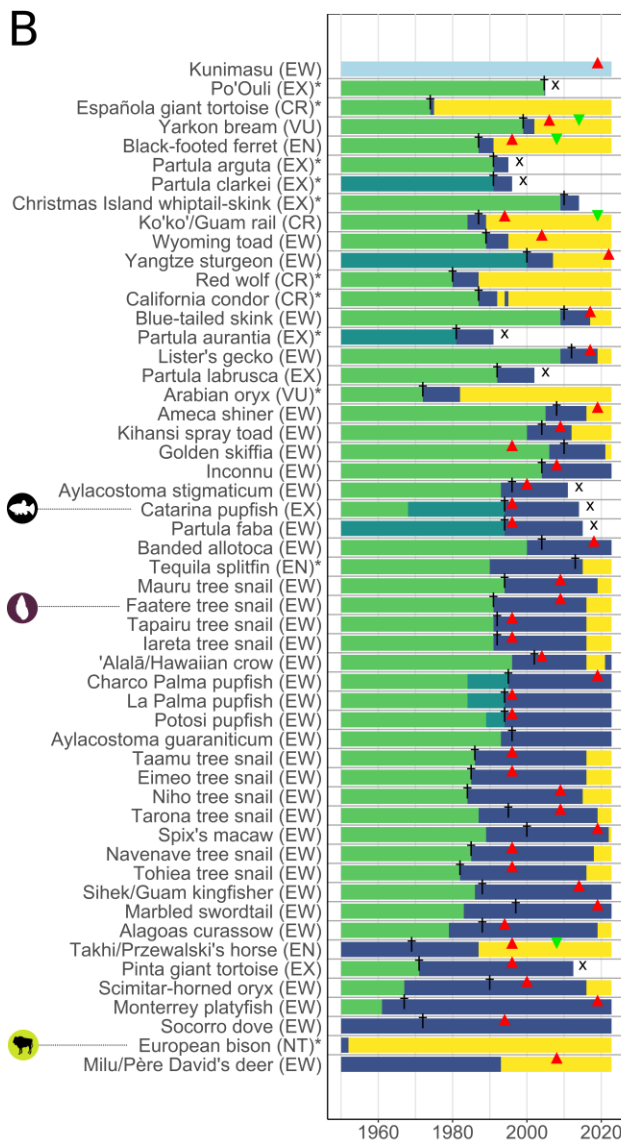
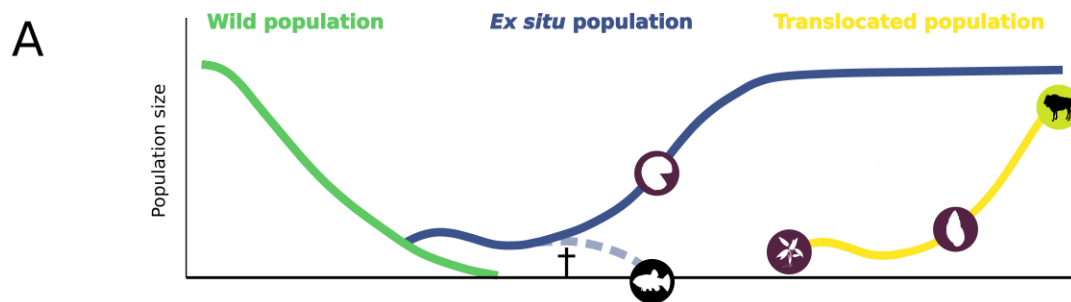
holdings of more than 1100 botanical collections globally (54) combined with academic and grey

298

literature, and advice from relevant taxon experts and conservation practitioners.

299

300



- Unmanaged population outside of native range (established for reasons other than conservation)
- Wild populations extant until final collection for ex situ
- Collection date unknown, period over which founders of ex situ population could have been collected
- Species exists in ex situ collection with no exchange with wild population
- Species exists in situ in populations established through conservation translocations
- ▶ One or more unsuccessful translocations of unknown duration
- † Date of Last record in wild prior to extirpation
- x Species has suffered outright extinction
- ▲ Assessed on Red List as EW
- ▼ Downlisted from EW

302 **Fig. 3. The conservation history of all species known to have met the definition of EW since**
303 **1950. (A)** Schematic showing stages in the process of recovery of highly threatened species
304 through collection for *ex situ* care, *ex situ* population growth and maintenance, and return to the
305 wild through translocations. Pathways through these stages or towards extinction are illustrated
306 with icons representing example species in panels B and C. **(B & C)** Timelines representing the
307 history of this process for all animal **(B)** and plant **(C)** species that would have met the definition
308 of EW since 1950. Colours represent the population status and activity over the time period
309 depicted. Species are listed in ascending order of time spent in *ex situ* care experiencing no
310 exchange with wild populations (using the minimum possible duration where this is not known
311 with certainty). The present Red List status is listed in parentheses after the common name
312 (animals) or scientific name (plants). Species marked with an asterisk (“*”) have never been
313 listed as EW on the Red List.

314

315 **Table 1. Number of individuals initiating *ex situ* populations, and—where reported—**
316 **number of founder lineages currently represented, of animal (left) and plant (right) EW**
317 **species.**

Animal species	Number of individuals collected (of which, number of founders represented)	Plant species	Number of individuals collected
Alagoas curassow	5 (3)	<i>Abutilon pitcairnense</i>	1

Ameica shiner	6	<i>Cyanea pinnatifida</i>	1
Wyoming toad	10	<i>Encephalartos relictus</i>	1
‘Alalā (or Hawaiian crow)	10 (9)	<i>Encephalartos woodii</i>	1
Spix’s macaw	17 (7)	<i>Kokia cookei</i>	1
Socorro dove	17	<i>Sophora toromiro</i>	1
Milu (or Père David's deer)	18 (11)	<i>Cyanea superba</i>	3
Sihek (or Guam kingfisher)	29 (16)	<i>Diplazium laffanianum</i>	5
Lister's gecko	43		
Golden skiffia	<50		
Scimitar-horned oryx	48-60		
Blue-tailed skink	66		
Kihansi spray toad	499		

318

319

320 **References and Notes**

- 321 1. G. Ceballos, P. R. Ehrlich, A. D. Barnosky, A. García, R. M. Pringle, T. M. Palmer,
322 Accelerated modern human-induced species losses: Entering the sixth mass extinction.
323 *Sci. Adv.* **1**, e1400253 (2015).
- 324 2. H. M. Pereira, P. W. Leadley, V. Proença, R. Alkemade, J. P. W. Scharlemann, J. F.
325 Fernandez-Manjarrés, M. B. Araújo, P. Balvanera, R. Biggs, W. W. L. Cheung, L. Chini,
326 H. D. Cooper, E. L. Gilman, S. Guénette, G. C. Hurtt, H. P. Huntington, G. M. Mace, T.
327 Oberdorff, C. Revenga, P. Rodrigues, R. J. Scholes, U. R. Sumaila, M. Walpole, Scenarios
328 for Global Biodiversity in the 21st Century. *Science*. **330**, 1496–1501 (2010).
- 329 3. CBD, “Global Biodiversity Outlook 5. Montreal.” (2020).
- 330 4. T. Abeli, S. Dalrymple, S. Godefroid, A. Mondoni, J. V. Müller, G. Rossi, S. Orsenigo, Ex
331 situ collections and their potential for the restoration of extinct plants. *Conserv. Biol.* **34**,
332 303–313 (2020).
- 333 5. F. C. Bolam, L. Mair, M. Angelico, T. M. Brooks, M. Burgman, C. Hermes, M.
334 Hoffmann, R. W. Martin, P. J. K. McGowan, A. S. L. Rodrigues, C. Rondinini, J. R. S.
335 Westrip, H. Wheatley, Y. Bedolla-Guzmán, J. Calzada, M. F. Child, P. A. Cranswick, C.
336 R. Dickman, B. Fessl, D. O. Fisher, S. T. Garnett, J. J. Groombridge, C. N. Johnson, R. J.
337 Kennerley, S. R. B. King, J. F. Lamoreux, A. C. Lees, L. Lens, S. P. Mahood, D. P.
338 Mallon, E. Meijaard, F. Méndez-Sánchez, A. R. Percequillo, T. J. Regan, L. M. Renjifo,
339 M. C. Rivers, N. S. Roach, L. Roxburgh, R. J. Safford, P. Salaman, T. Squires, E.
340 Vázquez-Domínguez, P. Visconti, J. C. Z. Woinarski, R. P. Young, S. H. M. Butchart,
341 How many bird and mammal extinctions has recent conservation action prevented?
342 *Conserv. Lett.* (2020), doi:10.1111/conl.12762.
- 343 6. M. Hoffmann, C. Hilton-Taylor, A. Angulo, M. Böhm, T. M. Brooks, S. H. M. Butchart,
344 K. E. Carpenter, J. Chanson, B. Collen, N. A. Cox, W. R. T. Darwall, N. K. Dulvy, L. R.
345 Harrison, V. Katariya, C. M. Pollock, S. Quader, N. I. Richman, A. S. L. Rodrigues, M. F.
346 Tognelli, J.-C. Vié, J. M. Aguiar, D. J. Allen, G. R. Allen, G. Amori, N. B. Ananjeva, F.
347 Andreone, P. Andrew, A. L. A. Ortiz, J. E. M. Baillie, R. Baldi, B. D. Bell, S. D. Biju, J.
348 P. Bird, P. Black-Decima, J. J. Blanc, F. Bolaños, W. Bolivar-G, I. J. Burfield, J. A.
349 Burton, D. R. Capper, F. Castro, G. Catullo, R. D. Cavanagh, A. Channing, N. L. Chao, A.
350 M. Chenery, F. Chiozza, V. Clausnitzer, N. J. Collar, L. C. Collett, B. B. Collette, C. F. C.
351 Fernandez, M. T. Craig, M. J. Crosby, N. Cumberlandidge, A. Cuttelod, A. E. Derocher, A. C.
352 Diesmos, J. S. Donaldson, J. W. Duckworth, G. Dutson, S. K. Dutta, R. H. Emslie, A.
353 Farjon, S. Fowler, J. Freyhof, D. L. Garshelis, J. Gerlach, D. J. Gower, T. D. Grant, G. A.
354 Hammerson, R. B. Harris, L. R. Heaney, S. B. Hedges, J.-M. Hero, B. Hughes, S. A.
355 Hussain, J. I. M, R. F. Inger, N. Ishii, D. T. Iskandar, R. K. B. Jenkins, Y. Kaneko, M.
356 Kottelat, K. M. Kovacs, S. L. Kuzmin, E. L. Marca, J. F. Lamoreux, M. W. N. Lau, E. O.

- 357 Lavilla, K. Leus, R. L. Lewison, G. Lichtenstein, S. R. Livingstone, V. Lukoschek, D. P.
358 Mallon, P. J. K. McGowan, A. McIvor, P. D. Moehlman, S. Molur, A. M. Alonso, J. A.
359 Musick, K. Nowell, R. A. Nussbaum, W. Olech, N. L. Orlov, T. J. Papenfuss, G. Parra-
360 Olea, W. F. Perrin, B. A. Polidoro, M. Pourkazemi, P. A. Racey, J. S. Ragle, M. Ram, G.
361 Rathbun, R. P. Reynolds, A. G. J. Rhodin, S. J. Richards, L. O. Rodríguez, S. R. Ron, C.
362 Rondinini, A. B. Rylands, Y. S. de Mitcheson, J. C. Sanciango, K. L. Sanders, G. Santos-
363 Barrera, J. Schipper, C. Self-Sullivan, Y. Shi, A. Shoemaker, F. T. Short, C. Sillero-
364 Zubiri, D. L. Silvano, K. G. Smith, A. T. Smith, J. Snoeks, A. J. Stattersfield, A. J. Symes,
365 A. B. Taber, B. K. Talukdar, H. J. Temple, R. Timmins, J. A. Tobias, K. Tsytulina, D.
366 Tweddle, C. Ubeda, S. V. Valenti, P. P. van Dijk, L. M. Veiga, A. Veloso, D. C. Wege, M.
367 Wilkinson, E. A. Williamson, F. Xie, B. E. Young, H. R. Akçakaya, L. Bennun, T. M.
368 Blackburn, L. Boitani, H. T. Dublin, G. A. B. da Fonseca, C. Gascon, T. E. Lacher, G. M.
369 Mace, S. A. Mainka, J. A. McNeely, R. A. Mittermeier, G. M. Reid, J. P. Rodriguez, A. A.
370 Rosenberg, M. J. Samways, J. Smart, B. A. Stein, S. N. Stuart, The Impact of
371 Conservation on the Status of the World's Vertebrates. *Science*. **330**, 1503–1509 (2010).
- 372 7. CBD, 1st Draft of The Post-2020 Global Biodiversity Framework. *UNEP - UN Environ.*
373 *Programme* (2021), (available at [http://www.unep.org/resources/publication/1st-draft-](http://www.unep.org/resources/publication/1st-draft-post-2020-global-biodiversity-framework)
374 [post-2020-global-biodiversity-framework](http://www.unep.org/resources/publication/1st-draft-post-2020-global-biodiversity-framework)).
- 375 8. IUCN, The IUCN Red List of Threatened Species. *IUCN Red List Threat. Species Version*
376 *2022-1* (2022), (available at <https://www.iucnredlist.org/en>).
- 377 9. B. Groombridge, G. M. Mace, G. Rabb, 1994 IUCN red list of threatened animals (1994).
- 378 10. F. W. Allendorf, G. Luikart, *Conservation and the Genetics of Populations* (John Wiley &
379 Sons, 2009).
- 380 11. R. Frankham, J. D. Ballou, D. A. Briscoe, *Introduction to Conservation Genetics*
381 (Cambridge University Press, Cambridge, ed. 2, 2010);
382 [https://www.cambridge.org/core/books/introduction-to-conservation-](https://www.cambridge.org/core/books/introduction-to-conservation-genetics/696B4E558C93F7FBF9C33D6358EA7425)
383 [genetics/696B4E558C93F7FBF9C33D6358EA7425](https://www.cambridge.org/core/books/introduction-to-conservation-genetics/696B4E558C93F7FBF9C33D6358EA7425)).
- 384 12. R. C. Lacy, Lessons from 30 years of population viability analysis of wildlife populations.
385 *Zoo Biol.* **38**, 67–77 (2019).
- 386 13. B. W. Brook, L. W. Traill, C. J. A. Bradshaw, Minimum viable population sizes and
387 global extinction risk are unrelated. *Ecol. Lett.* **9**, 375–382 (2006).
- 388 14. L. W. Traill, C. J. A. Bradshaw, B. W. Brook, Minimum viable population size: A meta-
389 analysis of 30 years of published estimates. *Biol. Conserv.* **139**, 159–166 (2007).

- 390 15. D. H. Reed, J. J. O’Grady, B. W. Brook, J. D. Ballou, R. Frankham, Estimates of
391 minimum viable population sizes for vertebrates and factors influencing those estimates.
392 *Biol. Conserv.* **113**, 23–34 (2003).
- 393 16. R. Frankham, C. J. A. Bradshaw, B. W. Brook, Genetics in conservation management:
394 Revised recommendations for the 50/500 rules, Red List criteria and population viability
395 analyses. *Biol. Conserv.* **170**, 56–63 (2014).
- 396 17. R. Frankham, J. D. Ballou, D. A. Briscoe, *Introduction to Conservation Genetics*
397 (Cambridge University Press, Cambridge, 2002;
398 [https://www.cambridge.org/core/books/introduction-to-conservation-](https://www.cambridge.org/core/books/introduction-to-conservation-genetics/F1F8EDB8B86A1790A406064296878B23)
399 [genetics/F1F8EDB8B86A1790A406064296878B23](https://www.cambridge.org/core/books/introduction-to-conservation-genetics/F1F8EDB8B86A1790A406064296878B23)).
- 400 18. C. M. Lees, J. Wilcken, Sustaining the Ark: the challenges faced by zoos in maintaining
401 viable populations. *Int. Zoo Yearb.* **43**, 6–18 (2009).
- 402 19. R. Frankham, Genetic adaptation to captivity in species conservation programs. *Mol. Ecol.*
403 **17**, 325–333 (2008).
- 404 20. R. Rauschkolb, L. Szczeparska, A. Kehl, O. Bossdorf, J. F. Scheepens, Plant populations
405 of three threatened species experience rapid evolution under ex situ cultivation. *Biodivers.*
406 *Conserv.* **28**, 3951–3969 (2019).
- 407 21. L. M. Woodworth, M. E. Montgomery, D. A. Briscoe, R. Frankham, Rapid genetic
408 deterioration in captive populations: Causes and conservation implications. *Conserv.*
409 *Genet.* **3**, 277–288 (2002).
- 410 22. A. Trask, S. Canessa, A. Moehrensclager, S. Newland, S. Medina, J. Ewen, Extinct-in-
411 the-wild species’ last stand. *Science.* **369**, 516–516 (2020).
- 412 23. Global Species Management Plans - WAZA. <https://www.waza.org/>, (available at
413 [https://www.waza.org/priorities/conservation/conservation-breeding-programmes/global-](https://www.waza.org/priorities/conservation/conservation-breeding-programmes/global-species-management-plans/)
414 [species-management-plans/](https://www.waza.org/priorities/conservation/conservation-breeding-programmes/global-species-management-plans/)).
- 415 24. L. J. Faust, S. T. Long, K. Perišin, J. L. Simonis, Uncovering challenges to sustainability
416 of AZA Animal Programs by evaluating the outcomes of breeding and transfer
417 recommendations with PMCTrack. *Zoo Biol.* **38**, 24–35 (2019).
- 418 25. J. Wang, Monitoring and managing genetic variation in group breeding populations
419 without individual pedigrees. *Conserv. Genet.* **5**, 813–825 (2004).
- 420 26. D. Clarke, “EAZA Best Practice Guidelines for Partula snails” (EAZA, 2019), (available
421 at [https://www.eaza.net/assets/Uploads/CCC/BPG-2019/2019-Partula-sp-EAZA-Best-](https://www.eaza.net/assets/Uploads/CCC/BPG-2019/2019-Partula-sp-EAZA-Best-Practice-Guidelines-Approved.pdf)
422 [Practice-Guidelines-Approved.pdf](https://www.eaza.net/assets/Uploads/CCC/BPG-2019/2019-Partula-sp-EAZA-Best-Practice-Guidelines-Approved.pdf)).

- 423 27. J. Wood, J. D. Ballou, T. Callicrate, J. B. Fant, M. P. Griffith, A. T. Kramer, R. C. Lacy,
424 A. Meyer, S. Sullivan, K. Traylor-Holzer, S. K. Walsh, K. Havens, Applying the zoo
425 model to conservation of threatened exceptional plant species. *Conserv. Biol.* **34**, 1416–
426 1425 (2020).
- 427 28. J. A. Foster, S. K. Walsh, K. Havens, A. T. Kramer, J. B. Fant, Supporting long-term
428 sustainability of ex situ collections using a pedigree-based population management
429 approach. *Appl. Plant Sci.*, e11491 (2022).
- 430 29. S. V. Wyse, J. B. Dickie, K. J. Willis, Seed banking not an option for many threatened
431 plants. *Nat. Plants.* **4**, 848–850 (2018).
- 432 30. K. O’Donnell, S. Sharrock, The contribution of botanic gardens to ex situ conservation
433 through seed banking. *Plant Divers.* **39**, 373–378 (2017).
- 434 31. S. Sharrock, “Plant Conservation Report 2020: A review of progress in implementation of
435 the Global Strategy for Plant Conservation 2011-2020.” (Secretariat of the Convention on
436 Biological Diversity, Montréal, Canada and Botanic Gardens Conservation International,
437 Richmond, UK., 2020), (available at [https://www.cbd.int/doc/publications/cbd-ts-95-en-
438 hr.pdf](https://www.cbd.int/doc/publications/cbd-ts-95-en-hr.pdf)).
- 439 32. S. V. Wyse, J. B. Dickie, Taxonomic affinity, habitat and seed mass strongly predict seed
440 desiccation response: a boosted regression trees analysis based on 17 539 species. *Ann.*
441 *Bot.* **121**, 71–83 (2018).
- 442 33. E. W. Gifford, Grayson’s Pigeon (*Zenaidura graysoni*) in Captivity. *The Auk.* **44**, 513–519
443 (1927).
- 444 34. S. H. M. Butchart, A. J. Stattersfield, L. A. Bennun, S. M. Shutes, H. R. Akçakaya, J. E.
445 M. Baillie, S. N. Stuart, C. Hilton-Taylor, G. M. Mace, Measuring Global Trends in the
446 Status of Biodiversity: Red List Indices for Birds. *PLOS Biol.* **2**, e383 (2004).
- 447 35. S. H. M. Butchart, S. Lowe, R. W. Martin, A. Symes, J. R. S. Westrip, H. Wheatley,
448 Which bird species have gone extinct? A novel quantitative classification approach. *Biol.*
449 *Conserv.* **227**, 9–18 (2018).
- 450 36. M. J. Monroe, S. H. M. Butchart, A. O. Mooers, F. Bokma, The dynamics underlying
451 avian extinction trajectories forecast a wave of extinctions. *Biol. Lett.* **15**, 20190633
452 (2019).
- 453 37. N. J. Collar, Preparing captive-bred birds for reintroduction: the case of the Vietnam
454 Pheasant *Lophura edwardsi*. *Bird Conserv. Int.*, 1–16 (undefined/ed).

- 455 38. S. (Bas) van Balen, N. J. Collar, The Vanishing Act: A History and Natural History of the
456 Javan Pied Starling *Gracupica jalla*. *Ardea*. **109**, 41–54 (2021).
- 457 39. R. da Silva, P. Pearce-Kelly, B. Zimmerman, M. Knott, W. Foden, D. A. Conde,
458 Assessing the conservation potential of fish and corals in aquariums globally. *J. Nat.*
459 *Conserv.* **48**, 1–11 (2019).
- 460 40. Z. Cheng, X. Tian, Z. Zhong, P. Li, D. Sun, J. Bai, Y. Meng, S. Zhang, Y. Zhang, L.
461 Wang, D. Liu, Reintroduction, distribution, population dynamics and conservation of a
462 species formerly extinct in the wild: A review of thirty-five years of successful Milu
463 (*Elaphurus davidianus*) reintroduction in China. *Glob. Ecol. Conserv.*, e01860 (2021).
- 464 41. IUCN, 119 - Improving process and action to identify and recover ‘Extinct in the Wild’
465 species. *IUCN World Conserv. Congr. 2020* (2020), (available at
466 <https://www.iucncongress2020.org/motion/119>).
- 467 42. S. Canessa, S. J. Converse, M. West, N. Clemann, G. Gillespie, M. McFadden, A. J. Silla,
468 K. M. Parris, M. A. McCarthy, Planning for ex situ conservation in the face of uncertainty.
469 *Conserv. Biol.* **30**, 599–609 (2016).
- 470 43. E. H. Paxton, M. Laut, S. Enomoto, M. Bogardus, “Hawaiian forest bird conservation
471 strategies for minimizing the risk of extinction: biological and biocultural considerations.
472 Hawai‘i Cooperative Studies Unit Technical Report HCSU-103” (University of Hawai‘i at
473 Hilo, Hawaii, USA, 2022), (available at <http://hdl.handle.net/10790/5386>).
- 474 44. V. Hemming, A. E. Camaclang, M. S. Adams, M. Burgman, K. Carbeck, J. Carwardine, I.
475 Chadès, L. Chalifour, S. J. Converse, L. N. K. Davidson, G. E. Garrard, R. Finn, J. R.
476 Fleri, J. Huard, H. J. Mayfield, E. M. Madden, I. Naujokaitis-Lewis, H. P. Possingham, L.
477 Rumpff, M. C. Runge, D. Stewart, V. J. D. Tulloch, T. Walshe, T. G. Martin, An
478 introduction to decision science for conservation. *Conserv. Biol.* **36**, e13868 (2022).
- 479 45. T. G. Martin, S. Nally, A. A. Burbidge, S. Arnall, S. T. Garnett, M. W. Hayward, L. F.
480 Lumsden, P. Menkhorst, E. McDonald-Madden, H. P. Possingham, Acting fast helps
481 avoid extinction. *Conserv. Lett.* **5**, 274–280 (2012).
- 482 46. O. Byers, C. Lees, J. Wilcken, C. Schwitzer, The One Plan Approach: The philosophy and
483 implementation of CBSG’s approach to integrated species conservation planning. *WAZA*
484 *Mag.* **14**, 2–5 (2013).
- 485 47. A. Hay, IUCN Red List of Threatened Species: *Brugmansia aurea*. *IUCN Red List Threat.*
486 *Species* (2014) (available at <https://www.iucnredlist.org/en>).
- 487 48. IUCN/SSC, *Guidelines for reintroductions and other conservation translocations*. (2013;
488 <http://data.iucn.org/dbtw-wpd/edocs/2013-009.pdf>).

- 489 49. J. F. Brodie, S. Lieberman, A. Moehrensclager, K. H. Redford, J. P. Rodríguez, M.
490 Schwartz, P. J. Seddon, J. E. M. Watson, Global policy for assisted colonization of
491 species. *Science*. **372**, 456–458 (2021).
- 492 50. Parks Australia, Basking on tropical oasis after decade in captivity (2021), (available at
493 [https://parksaustralia.gov.au/christmas/news/basking-on-tropical-oasis-after-decade-in-](https://parksaustralia.gov.au/christmas/news/basking-on-tropical-oasis-after-decade-in-captivity/)
494 [captivity/](https://parksaustralia.gov.au/christmas/news/basking-on-tropical-oasis-after-decade-in-captivity/)).
- 495 51. Endangered and Threatened Wildlife and Plants; Establishment of a Nonessential
496 Experimental Population of the Guam Kingfisher, or Sihek, on Palmyra Atoll, USA. *Fed.*
497 *Regist.* (2022), (available at [https://www.federalregister.gov/documents/2022/08/31/2022-](https://www.federalregister.gov/documents/2022/08/31/2022-18571/endangered-and-threatened-wildlife-and-plants-establishment-of-a-nonessential-experimental)
498 [18571/endangered-and-threatened-wildlife-and-plants-establishment-of-a-nonessential-](https://www.federalregister.gov/documents/2022/08/31/2022-18571/endangered-and-threatened-wildlife-and-plants-establishment-of-a-nonessential-experimental)
499 [experimental](https://www.federalregister.gov/documents/2022/08/31/2022-18571/endangered-and-threatened-wildlife-and-plants-establishment-of-a-nonessential-experimental)).
- 500 52. T. Coote, G. Garcia, D. Clarke, Fourth year of *Partula* species reintroductions into natural
501 habitat on Tahiti and Moorea. *Tentacle*, 35–38 (2019).
- 502 53. Species360 Zoological Information Management System (ZIMS) (2022), (available at
503 <https://www.species360.org/>).
- 504 54. BGCI, PlantSearch online database. *Bot. Gard. Conserv. Int.* (2022), (available at
505 <https://www.bgci.org/resources/bgci-databases/plantsearch/>).
- 506 55. IUCN, *IUCN Red List Categories and Criteria: Version 3.1* (IUCN, Gland, Switzerland
507 and Cambridge, UK, Second edition., 2012).
- 508 56. H. R. Akçakaya, E. L. Bennett, T. M. Brooks, M. K. Grace, A. Heath, S. Hedges, C.
509 Hilton-Taylor, M. Hoffmann, D. A. Keith, B. Long, D. P. Mallon, E. Meijaard, E. J.
510 Milner-Gulland, A. S. L. Rodrigues, J. P. Rodriguez, P. J. Stephenson, S. N. Stuart, R. P.
511 Young, Quantifying species recovery and conservation success to develop an IUCN Green
512 List of Species. *Conserv. Biol.* **32**, 1128–1138 (2018).
- 513 57. AZA, Animal Program Database (2022), (available at
514 [https://ams.aza.org/eweb/DynamicPage.aspx?Site=AZA&WebKey=8f652949-31be-4387-](https://ams.aza.org/eweb/DynamicPage.aspx?Site=AZA&WebKey=8f652949-31be-4387-876f-f49a2d7263b2)
515 [876f-f49a2d7263b2](https://ams.aza.org/eweb/DynamicPage.aspx?Site=AZA&WebKey=8f652949-31be-4387-876f-f49a2d7263b2)).
- 516 58. PROGRAMMES » EAZA, (available at
517 <https://www.eaza.net/conservation/programmes/##TAGSandBP>).
- 518 59. Species Programs, (available at
519 <https://zooaquarium.org.au/public/Public/Conservation/Species-Programs.aspx>).

- 520 60. M. Goren, Saving critically endangered fish species—utopia or practical idea? The story of
521 the Yarqon bleak—*Acanthobrama telavivensis* (Cyprinidae) as a test case. *Aqua Int. J.*
522 *Ichthyol.* **15**, 1–12 (2009).
- 523 61. M. K. Brock, G. M. Beauprez, The Rail Road To Recovery. *Endanger. Species Update.*
524 **18**, S6–S6 (2001).
- 525 62. P. Andrew, H. Cogger, D. Driscoll, S. Flakus, P. Harlow, D. Maple, M. Misso, C. Pink, K.
526 Retallick, K. Rose, B. Tiernan, J. West, J. C. Z. Woinarski, Somewhat saved: a captive
527 breeding programme for two endemic Christmas Island lizard species, now extinct in the
528 wild. *Oryx.* **52**, 171–174 (2018).
- 529 63. E. VanderWerf, The Race to Save the World’s Rarest Bird: The Discovery and Death of
530 the Po’ouli. *The Auk.* **127**, 958–959 (2010).
- 531 64. J. Gerlach, *Partula arguta*, (available at <https://islandbiodiversity.com/arguta.htm>).
- 532 65. J. Randerson, End of the trail for Polynesia’s star snails. *New Sci.* **178**, 10–10 (2003).
- 533 66. J. Murray, E. Murray, M. S. Johnson, B. Clarke, The extinction of *Partula* on Moorea
534 (1988).
- 535 67. S. Wells, The extinction of endemic snails (genus *Partula*) in French Polynesia: is captive
536 breeding the only solution. *Conserv. Biol. Molluscs IUCN Species Surviv. Comm. World*
537 *Conserv. Union*, 25–28 (1995).
- 538 68. S. Tonge, Q. Bloxam, A review of the captive-breeding programme for Polynesian tree
539 snails *Partula* spp. *Int. Zoo Yearb.* **30**, 51–59 (1991).
- 540 69. A. A. Cunningham, P. Daszak, Extinction of a Species of Land Snail Due to Infection with
541 a Microsporidian Parasite. *Conserv. Biol.* **12**, 1139–1141 (1998).
- 542 70. Z. Pucek, IUCN/SSC Bison Specialist Group, International Union for Conservation of
543 Nature and Natural Resources, Eds., *European bison: status survey and conservation*
544 *action plan* (IUCN, Gland, Switzerland ; Cambridge, 2004).
- 545 71. M. Tokarska, C. Pertoldi, R. Kowalczyk, K. Perzanowski, Genetic status of the European
546 bison *Bison bonasus* after extinction in the wild and subsequent recovery. *Mammal Rev.*
547 **41**, 151–162 (2011).
- 548 72. J. W. Hinton, M. J. Chamberlain, D. R. Rabon, Red Wolf (*Canis rufus*) Recovery: A
549 Review with Suggestions for Future Research. *Animals.* **3**, 722–744 (2013).

- 550 73. J. P. Gibbs, E. A. Hunter, K. T. Shoemaker, W. H. Tapia, L. J. Cayot, Demographic
551 Outcomes and Ecosystem Implications of Giant Tortoise Reintroduction to Española
552 Island, Galapagos. *PLOS ONE*. **9**, e110742 (2014).
- 553 74. W. Tapia, H. B. Goldspiel, J. P. Gibbs, Introduction of giant tortoises as a replacement
554 “ecosystem engineer” to facilitate restoration of Santa Fe Island, Galapagos. *Restor. Ecol.*
555 **30**, e13476 (2022).
- 556 75. J. R. Walters, S. R. Derrickson, D. M. Fry, S. M. Haig, J. M. Marzluff, J. M. W. Jr, Status
557 of the California Condor (*Gymnogyps californianus*) and Efforts to Achieve Its Recovery.
558 *The Auk*. **127**, 969–1001 (2010).
- 559 76. T. Belfield, T. Tunison, J. Chase, S. McDaniel, “Rare plant stabilization projects at Hawaii
560 Volcanoes National Park, 1998-2008” (Technical Report 174, Pacific Cooperative Studies
561 Unit, University of Hawai`i, Honolulu, Hawai`i, 2011), p. 121.
- 562 77. A. Spalton, A brief history of the reintroduction of the Arabian oryx *Oryx leucoryx* into
563 Oman 1980–1992. *Int. Zoo Yearb.* **32**, 81–90 (1993).
- 564 78. WFO, *World Flora Online Version 2022 07* (2022), (available at
565 <http://www.worldfloraonline.org/>).
- 566 79. *Agave vera-cruz* Mill. | Plants of the World Online | Kew Science. *Plants World Online*,
567 (available at <http://powo.science.kew.org/taxon/urn:lsid:ipni.org:names:62336-1>).
- 568 80. USFWS, “*Cyrtandra waiolani* (ha‘iwale) 5-Year Review Summary and Evaluation”
569 (2019), (available at https://ecos.fws.gov/docs/tess/species_nonpublish/2789.pdf).
- 570 81. V. Tatayah, R. Jhangeer-Khan, J. A. Bégué, *Dombeya rodriguesiana*. IUCN Red List of
571 Threatened Species: *IUCN Red List Threat. Species* (2021) (available at
572 <https://www.iucnredlist.org/en>).
- 573 82. S. M. Toledo-Castro, J. A. González-Lavaut, O. Echemendí, N. García-González,
574 Phytochemical and pharmacological evaluation of the fruits of *Erythroxyllum minutifolium*
575 Griseb. (Erythroxyllaceae). *Rev. Cuba. Plantas Med.* **13** (2008).
- 576 83. B. K. Lang, D. A. Kelt, S. M. Shuster, The role of controlled propagation on an
577 endangered species: demographic effects of habitat heterogeneity among captive and
578 native populations of the socorro isopod (Crustacea: Flabellifera). *Biodivers. Conserv.* **15**,
579 3909–3935 (2006).
- 580 84. *Encephalartos Relictus*. *Exclus. Cycads SA*, (available at
581 <https://exclusivecycadssa.com/index.php/cycad-blog/focus-on/189-encephalartos-relictus>).

- 582 85. S. Poursaeid, B. Falahatkar, Threatened fishes of the world: *Stenodus leucichthys*
583 *leucichthys* Gldenstdt, 1772 (Salmonidae). *Aqua Int. J. Ichthyol.* **18**, 31–35 (2012).
- 584 86. J. Li, H. Du, J. Wu, H. Zhang, L. Shen, Q. Wei, Foundation and Prospects of Wild
585 Population Reconstruction of *Acipenser dabryanus*. *Fishes.* **6**, 55 (2021).
- 586 87. USFWS, “Wyoming Toad *Bufo hemiophrys baxteri* now known as *Anaxyrus baxteri*
587 Revised Recovery Plan, May 2015; Original Approved September 11, 1991.” (U.S. Fish
588 and Wildlife Service, Cheyenne, Wyoming, 2015).
- 589 88. P. E. A. Hoeck, M. E. Wolak, R. A. Switzer, C. M. Kuehler, A. A. Lieberman, Effects of
590 inbreeding and parental incubation on captive breeding success in Hawaiian crows. *Biol.*
591 *Conserv.* **184**, 357–364 (2015).
- 592 89. ‘Alal Project, Press Release: Adaptation is key to overcoming challenges faced in ‘Alal
593 Recovery program (2020), (available at
594 [https://dlnr.hawaii.gov/alalaproject/2020/10/06/press-release-adaptation-is-key-to-](https://dlnr.hawaii.gov/alalaproject/2020/10/06/press-release-adaptation-is-key-to-overcoming-challenges-faced-in-%ca%bbalala-recovery-program/)
595 [overcoming-challenges-faced-in-%ca%bbalala-recovery-program/](https://dlnr.hawaii.gov/alalaproject/2020/10/06/press-release-adaptation-is-key-to-overcoming-challenges-faced-in-%ca%bbalala-recovery-program/)).
- 596 90. J.-P. Emery, thesis, University of Western Australia (2021).
- 597 91. R. McKie, ‘Extinct’ parrots make a flying comeback in Brazil. *The Observer* (2022),
598 (available at [https://www.theguardian.com/environment/2022/jul/10/extinct-parrots-make-](https://www.theguardian.com/environment/2022/jul/10/extinct-parrots-make-a-flying-comeback-in-brazil)
599 [a-flying-comeback-in-brazil](https://www.theguardian.com/environment/2022/jul/10/extinct-parrots-make-a-flying-comeback-in-brazil)).
- 600 92. S. Contreras Balderas, "Conservation of Mexican freshwater fishes: Some protected sites
601 and species, and recent federal legislation" in *Battle against extinction. Native fish*
602 *management in the American West*, W. L. Minckley, J. E. Deacon, Eds. (University of
603 Arizona Press, 1991), pp. 191–197.
- 604 93. S. T. Turvey, I. Barnes, M. Marr, S. Brace, Imperial trophy or island relict? A new
605 extinction paradigm for Pre David’s deer: a Chinese conservation icon. *R. Soc. Open Sci.*
606 **4**, 171096 (2017).
- 607 94. M. C. Costa, P. R. R. O. Jr, P. V. Davano, C. de Camargo, N. M. Laganaro, R. A.
608 Azeredo, J. Simpson, L. F. Silveira, M. R. Francisco, Recovering the Genetic Identity of
609 an Extinct-in-the-Wild Species: The Puzzling Case of the Alagoas Curassow. *PLOS ONE.*
610 **12**, e0169636 (2017).
- 611 95. P. Biondi, Extinct in the wild, a Brazilian bird makes a tentative return to the jungle.
612 *Mongabay Environ. News* (2019), (available at
613 [https://news.mongabay.com/2019/12/extinct-in-the-wild-a-brazilian-bird-makes-a-](https://news.mongabay.com/2019/12/extinct-in-the-wild-a-brazilian-bird-makes-a-tentative-return-to-the-jungle/)
614 [tentative-return-to-the-jungle/](https://news.mongabay.com/2019/12/extinct-in-the-wild-a-brazilian-bird-makes-a-tentative-return-to-the-jungle/)).

- 615 96. S. Lee, K. Zippel, L. Ramos, J. Searle, Captive-breeding programme for the Kihansi spray
616 toad *Nectophrynoides asperginis* at the Wildlife Conservation Society, Bronx, New York.
617 *Int. Zoo Yearb.* **40**, 241–253 (2006).
- 618 97. C. Mgina, The Dynamics of Re-introduced Kihansi Spray Toad *Nectophrynoides*
619 *asperginis* and other Amphibians in Kihansi Gorge, Udzungwa Mountains, Tanzania.
620 *Tanzan. J. Sci.* **45**, 584–598 (2019).
- 621 98. Zoogy, Avances del monitoreo de *Zoogoneticus tequila* y *Notropis amecae* en el Río
622 Teuchitlán. *zoogoneticustequila* (2021), (available at
623 [https://zoogoneticustequila.wixsite.com/zoogoneticustequila/post/avances-del-monitoreo-](https://zoogoneticustequila.wixsite.com/zoogoneticustequila/post/avances-del-monitoreo-de-zoogoneticus-tequila-y-notropis-amecae-en-el-río-teuchitlán)
624 [de-zoogoneticus-tequila-y-notropis-amecae-en-el-río-teuchitlán](https://zoogoneticustequila.wixsite.com/zoogoneticustequila/post/avances-del-monitoreo-de-zoogoneticus-tequila-y-notropis-amecae-en-el-río-teuchitlán)).
- 625 99. T. Woodfine, T. Gilbert, "The Fall and Rise of the Scimitar-Horned Oryx: A Case Study
626 of Ex-Situ Conservation and Reintroduction in Practice" in *Antelope Conservation*, J. Bro-
627 Jørgensen, D. P. Mallon, Eds. (John Wiley & Sons, Ltd, Chichester, UK, 2016;
628 <https://onlinelibrary.wiley.com/doi/10.1002/9781118409572.ch14>), pp. 280–296.
- 629 100. R. Ogden, J. Chuvén, T. Gilbert, C. Hosking, K. Gharbi, M. Craig, S. S. Al Dhaheri, H.
630 Senn, Benefits and pitfalls of captive conservation genetic management: Evaluating
631 diversity in scimitar-horned oryx to support reintroduction planning. *Biol. Conserv.* **241**,
632 108244 (2020).
- 633 101. A. Elbein, The Texotics. *Tex. Obs.* (2020), (available at
634 <https://www.texasobserver.org/the-textotics/>).
- 635 102. T. Gilbert, "International studbook for the scimitar-horned oryx *Oryx dammah*.
636 Seventeenth edition" (Winchester, UK, Marwell Wildlife, 2022), p. 1067.
- 637 103. T. Gilbert, thesis, University of Southampton (2011).
- 638 104. C. Lees, P. Miller, R. Beudels-Jamar, J. Newby, "Scimitar-horned Oryx Conservation
639 Planning Workshop II: Workshop Report" (IUCN/SSC Conservation Breeding Specialist
640 Group, Apple Valley, MN, 2010), p. 56.
- 641 105. ZSL, Two Extinct-in-the-Wild Partula snail species returned to the wild for first time in 25
642 years. *Zool. Soc. Lond. ZSL* (2019), (available at
643 [https://www.zsl.org/conservation/news/two-extinct-in-the-wild-partula-snail-species-](https://www.zsl.org/conservation/news/two-extinct-in-the-wild-partula-snail-species-returned-to-the-wild-for-first-time)
644 [returned-to-the-wild-for-first-time](https://www.zsl.org/conservation/news/two-extinct-in-the-wild-partula-snail-species-returned-to-the-wild-for-first-time)).
- 645 106. S. M. Haig, J. D. Ballou, N. J. Casna, Genetic Identification of Kin in Micronesian
646 Kingfishers. *J. Hered.* **86**, 423–431 (1995).

- 647 107. A. E. Trask, G. M. Ferrie, J. Wang, S. Newland, S. Canessa, A. Moehrensclager, M.
648 Laut, L. B. Duenas, J. G. Ewen, Multiple life-stage inbreeding depression impacts
649 demography and extinction risk in an extinct-in-the-wild species. *Sci. Rep.* **11** (2021),
650 doi:10.1038/s41598-020-79979-4.
- 651 108. R. B. Walter, L. Hazlewood, S. Kazianis, *The Xiphophorus Genetic Stock Center Manual*
652 (Texas State University, 2006).
- 653 109. J. Martínez-Gómez, "Re-Introduction of the Socorro dove, Socorro Island, Revillagigedo
654 Archipelago, Mexico." in *Global Re-introduction Perspectives: Additional case-studies*
655 *from around the globe* (IUCN/SSC Re-introduction Specialist Group, Abu Dhabi, UAE,
656 2010), pp. 182–186.
- 657 110. Conservation of *Abutilon Pitcairnense* | National Botanic Gardens of Ireland, (available at
658 <https://botanicgardens.ie/2011/01/10/conservation-of-abutilon-pitcairnense/>).
- 659 111. S. Godefroid, J. Piqueray, L.-M. Delescaille, A. Monty, G. Mahy, A framework to identify
660 constraints to post-extinction recovery of plant species—Application to the case of
661 *Bromus bromoideus*. *J. Nat. Conserv.* **54**, 125802 (2020).
- 662 112. USFWS, “*Cyaneapinnatifida* (Haha) 5-Year Review Summary and Evaluation” (2007),
663 (available at https://ecos.fws.gov/docs/tess/species_nonpublish/1096.pdf).
- 664 113. D. J. Adamski, T. J. Chambers, M. D. E. Akamine, K. Kawelo, Reintroduction approaches
665 and challenges for *Cyanea superba* (Cham.) A. Gray subsp. *superba*. *J. Nat. Conserv.* **57**,
666 125873 (2020).
- 667 114. *Deppea splendens*. *Calif. Acad. Sci.*, (available at [https://www.calacademy.org/explore-](https://www.calacademy.org/explore-science/deppea-splendens)
668 [science/deppea-splendens](https://www.calacademy.org/explore-science/deppea-splendens)).
- 669 115. Governor Laffan’s Fern. *Gov. Bermuda Dep. Environ. Nat. Resour.*, (available at
670 <https://environment.bm/governor-laffans-fern>).
- 671 116. *Franklinia* tree returns to its original south Georgia home. *AccessWDUN* (2002), (available
672 at <http://accesswdun.com/article/2002/4/195877>).
- 673 117. E. Fischer, C. M. Rodriguez, 690. *Nymphaea Thermanum*. *Curtiss Bot. Mag.* **27**, 318–327
674 (2010).
- 675 118. M. Ricci, L. Eaton, Do all existing *Sophora toromiro* descend from one individual?
676 *Biodivers. Conserv.* **6**, 1697–1702 (1997).

677 119. M. Maunder, A. Culham, B. Alden, G. Zizka, C. Orliac, W. Lobin, A. Bordeu, J. M.
678 Ramirez, S. Glissmann-Gough, Conservation of the Toromiro Tree: Case Study in the
679 Management of a Plant Extinct in the Wild. *Conserv. Biol.* **14**, 1341–1350 (2000).

680

681 **Acknowledgments:** We are very grateful to three anonymous reviewers for their thorough
682 review of this manuscript, and insightful and constructive guidance in improving it. We thank the
683 following taxon experts for providing details on the conservation history and present status of
684 species we investigated: Monika Böhm, Ian Burfield, Alex Cliffe, John Donaldson, Jon-Paul
685 Emery, Frank Howarth, Michael Koeck, Camile Lugarini, David Mallon, Bryce Masuda, Tim
686 Pearce, Paul Pearce-Kelly, Sean Putney, Manuel G. Quintana, Markita Savage, Stefan Stadler,
687 and Amanda Trask. Species icons, all public domain, were obtained from phylopic.org and were
688 produced by Thomas G. Barnes, Margot Michaud, Eric Moody, Felix Vaux, and Steven Traver.

689 **Funding:** DS and JGE acknowledge funding from Research England. Abby Meyer
690 acknowledges funding from U.S. Botanic Garden.

691 **Author contributions:**

692 Conceptualization: DS, TA, PC, SD, JGE, TG, CJH, NAL, A Moehrenschrager, JPR, PPS,

693 MZ

694 Methodology: DS, TA, SD, JGE

695 Investigation: DS, TA, EBB, SD, JF, A Meyer, OM

696 Supervision: JGE

697 Writing – original draft: DS, TA, JGE, TG, CJH, NAL, A Moehrenschlager, JPR, PPS,
698 AT, MZ

699 **Competing interests:** Authors declare that they have no competing interests.

700 **Data and materials availability:** All data are available in the main text or the supplementary
701 materials.

702 **Supplementary Materials**

703 Materials and Methods

704 Tables S1 to S10

705



706

707

708

709

Supplementary Materials for

710

711 Extinct in the Wild: The precarious state of the most threatened group of species
712 on Earth

713 Donal Smith, Thomas Abeli, Emily Beckman Bruns, Sarah Dalrymple, Jeremy Foster, Tania C. Gilbert, Carolyn J.
714 Hogg, Natasha A. Lloyd, Abby Meyer, Axel Moehrensclager, Olivia Murrell, Jon Paul Rodriguez, Paul P. Smith,
715 Andrew Terry, John G. Ewen

716

717 Correspondence to: donal.smith@ioz.ac.uk

718

719

720 **This PDF file includes:**

721

722 Materials and Methods

723 Tables S1 to S10

724

725

726

727

728

729 **Materials and Methods**

730 We compiled a list of all species historically qualifying for the International Union for
731 Conservation of Nature (IUCN) Red List of Threatened Species (Red List) category of Extinct in
732 the Wild (EW) (8). This category is applied to any species “known only to survive in cultivation,
733 in captivity or as a naturalized population (or populations) well outside the past range” (55). We
734 will hereafter refer to species that we regard as having met one of the first two conditions as
735 having been *ex situ*-restricted and reserve the term EW for those species that have been officially
736 assessed on the Red List as such. We are aware of only one species, the kunimasu
737 (*Oncorhynchus kawamurae*), that has been assessed as EW on the basis of being restricted to
738 naturalized populations outside of its native range established through intentional release for
739 commercial fishing purposes, and this state is not the primary focus of this study. In
740 approximating the start of modern species conservation, 1950 was chosen as a cut-off date for
741 inclusion (following the approach used by Akçakaya *et al.* (56)). This time window enabled us to
742 build a comprehensive list of species in a comparable context, minimising the risk of biasing our
743 selection towards well-known cases. Some species that were historically *ex situ*-restricted, such
744 as the thylacine (*Thylacinus cynocephalus*) or passenger pigeon (*Ectopistes migratorius*),
745 therefore fell outside of our scope. The assessments of the 82 species (38 animals and 44 plants)
746 currently categorised as EW were extracted from the Red List version 2022-1 (8). Species that
747 were formerly EW but have since gone extinct (three animal species, Table S1) or have been
748 downlisted to another category (i.e., an improvement in conservation status: four animal species,
749 Table S2) were compiled from IUCN summary statistics for genuine status changes (8). We then

750 identified additional species that would have been *ex situ*-restricted for any period of time
751 between 1950 and the introduction of the EW category in 1994. Such a historical state is not
752 currently recorded in any systematic way in the Red List, but the information is often contained
753 within the narrative text of assessments. Therefore, to find cases of such species that have since
754 gone extinct, we reviewed the narrative texts of the Red List assessments of all 180 extinct
755 species with a “year last seen” reported as 1950 or later for descriptions of an *ex situ*-restricted
756 state. It was not feasible to similarly manually review every assessment of an extant species,
757 given that their number exceeds 140000. However, if any such species had once been *ex situ*-
758 restricted, its populations that are now considered wild must have been established via a
759 conservation translocation. We therefore reviewed the Red List assessments of all species that
760 have distributions whose origins are coded as “reintroduced” or “assisted colonisation”. In case
761 of incomplete or incorrect origin coding, we also searched the narrative text of all Red List
762 assessments for the phrase “extinct in the wild” for mention of species that are acknowledged as
763 having previously occupied the state without having been assessed as such. Through these
764 approaches, we identified 13 additional species (11 animals and two plants) that were at some
765 point *ex situ*-restricted but never recorded on the Red List as EW (see Table S3 for the five
766 species that have since gone extinct, and Table S4 for the eight species that have since returned
767 to the wild). We also identified an additional plant species that is now extinct having previously
768 been assessed as EW but was not included in IUCN summary statistics on genuine status
769 changes (see Table S1).

770 Confirmation of extinction in the wild is an exhaustive process (35) beyond the scope of
771 this study. We therefore refrained from searching for species whose purported recent extinction
772 in the wild has not yet been confirmed in their Red List assessments. However, the Red List is
773 limited in timeliness and reach: the assessments for approximately a third of Critically
774 Endangered species are more than a decade old, for example, and the majority of species remain
775 unevaluated (8). We therefore emphasize that our approach necessarily restricts our study to the
776 best understood sub-set of the species to which the issues with which we are concerned pertain.
777 Similarly, while we have collated information on attempts to re-establish EW species into the
778 wild, we have refrained from engaging in any consideration as to whether these *in situ*
779 populations should be considered to have reached wild status, thus prompting a downlist of the
780 species. We again defer to the Red List process to make such determinations. We consider any
781 reported extinction in *ex situ* care of a species already assessed as EW to be unambiguous,
782 however, and incorporate these where relevant (see Table S5). We excluded eight species (three
783 animals and five plants) currently assessed as EW whose assessments appear erroneous or
784 superseded by reports of wild populations (see Table S6 for the list of these species alongside the
785 rationale for their removal).

786 For the resulting 96 species (53 animals and 43 plants) that we regard as having been *ex*
787 *situ*-restricted since 1950, we then collected information on the history of the collection, *ex situ*
788 maintenance, and conservation of each, namely: the periods over which founders of the *ex situ*
789 population were collected from the wild; the number of individuals collected to initiate the *ex*
790 *situ* population; the number of founders represented in the present population (where this is noted

791 as a separate number); the year the species was last recorded in the wild; and the timing and
792 status of any attempts to re-establish the species in the wild through conservation translocations.
793 Following IUCN guidelines for reintroductions and other conservation translocations (48), we
794 considered conservation translocations as involving the intentional release of individuals into the
795 wild for the purpose of the conservation of the species. Releases into indigenous range were
796 counted as reintroduction attempts, and those outside of indigenous range were counted as
797 assisted colonisations (48). Where this information was not contained in a Red List assessment,
798 we sought it from recovery project documentation, academic literature, and by contacting
799 relevant taxon experts and conservation practitioners. We additionally ran targeted Google and
800 Google News searches using the common and scientific names of each species and reviewed the
801 first 30 results, as information on actions such as recent conservation translocations is often
802 captured on project websites and news reports but not in the scientific or grey literature. Where
803 information was obtained from sources outside the Red List, it is indicated in the “additional
804 references” column in Tables S2-S8.

805 The status of the *ex situ* populations of currently EW species was assessed by quantifying
806 the number of institutions holding them; the type of institution for plants (i.e., botanical garden
807 or seed bank); the total *ex situ* population size for animals (this is not generally quantified or
808 reported for plants); whether an animal species was subject to metapopulation management or
809 had a studbook; and whether any Population Viability Analyses (PVAs) had been carried out for
810 *ex situ* populations. Information on studbooks, the number of holders, and population sizes for
811 animal species was obtained on April 25th 2022 from the Zoological Information Management

812 System (ZIMS), a database representing the real-time holdings of more than 1100 zoological and
813 aquarium collections globally, maintained by the conservation and wildlife care NGO
814 Species360 (53). We recorded whether a species was part of a cooperative breeding program by
815 consulting the Association of Zoos and Aquariums' database of Species Survival Programs
816 (SSPs) (57), the European Association of Zoos and Aquaria's list of EEPs (58), Australasia's
817 Zoo Aquarium Association's list of Species Management Programs (SMPs) (59), and the World
818 Association of Zoos and Aquariums' list of Global Species Management Plans (23). Information
819 for plant species was obtained from PlantSearch, a database reporting the living plant, seed, and
820 tissue holdings of more than 1100 botanical collections globally, maintained by Botanic Gardens
821 Conservation International (54). PlantSearch receives disaggregated collections data from
822 individual gardens and also differentiates between seed bank and living plant collections. From
823 this disaggregated data it is possible to calculate the number of different institutions that hold
824 collections of any given taxon. However, it is not possible to assess whether these collections are
825 of different provenances, meaning that PlantSearch data gives only a rough indication of the
826 breadth of genetic diversity held *ex situ*. To assess the usage of PVAs in the *ex situ* management
827 of EW species, we ran Google searches for the species and common name combined with the
828 terms "population viability analysis" and "PVA" and reviewed the first 30 results where present.

829 Through our review of the literature and other material described above, and by contacting
830 individual institutions and taxon experts, we were able to incorporate additional information on
831 EW species. *Ex situ* EW populations external to the ZIMS and PlantSearch databases were
832 collated for seventeen species (thirteen animals and four plants) eight of which (four animals and

833 four plants) were not otherwise represented. We were unable to obtain any information on the *ex*
834 *situ* populations of three EW species (one animal and two plants, see Table S7 for details).
835 Through this approach we have collated the most comprehensive and relevant overview of the *ex*
836 *situ* populations of EW species feasible. However, we acknowledge that some holdings remain
837 beyond the reach of our survey, specifically those maintained by hobbyists and private
838 collectors. We note, for example, that this is likely the case for eight Mexican freshwater fish
839 species (see Fig. 1). However, we do not expect that any extra material held in such contexts
840 would significantly alter the population summaries provided in Fig. 1 and Fig. 2.

841 To predict the seed storage behaviour of EW plant species, we applied the model developed
842 by Wyse and Dickie (32). This model harnesses an extensive dataset to predict the probability
843 that a given species will produce desiccation-sensitive (recalcitrant) seeds. This prediction is
844 based on: published seed storage information, taxonomic relationships between the species in
845 question and species with known seed storage behaviour, climate and elevation data for the
846 species, woodiness, seed mass, and dispersal mode. The model is run at three different
847 taxonomic levels—order, family, or genus—depending on the degree of information available,
848 with predictions based on higher taxonomic levels giving less reliable results. Results based on
849 species level are not model predictions, being instead directly based on existing information in
850 the database for that species. The model returns a probability of a species being recalcitrant
851 between 0 (desiccation-tolerant (orthodox)) and 1 (recalcitrant). Results closer to 0.5 are less
852 reliable. We were unable to obtain a prediction for four species: *Diplazium laffanianum*,
853 *Encephalartos heenanii*, *Encephalartos relictus*, *Kalanchoe fadeniorum*. 31 of the remaining 35

854 species were predicted (27 species) or known (four species) to have orthodox seed storage
855 behaviour, the remaining four species were predicted to have recalcitrant seeds. Predictions were
856 mostly based on family (18 species) or genus (10 species). See Table S9 for detailed model
857 output.

858

859

Table S1.

Scientific name	Common name	Kingdom	Class	Last reported in wild	Number of individuals collected (of which, number of founders represented)	Year extinct	Year reclassified as extinct
<i>Chelonoidis abingdonii</i>	Pinta giant tortoise	Animals	Reptilia	1971	1	2012	2016
<i>Megupsilon aporus</i>	Catarina pupfish	Animals	Actinopterygii	1994	Not reported	2014	2019
<i>Nesiota elliptica</i>	St Helena olive	Plants	Magnoliopsida	1994	1	2003	2004
<i>Partula labrusca</i>		Animals	Gastropoda	1992	Not reported	2002	2009

Species formerly assessed as EW that are now assessed as Extinct.

Table S2.

Scientific name	Common name(s)	Kingdom	Class	Last reported in wild	Number of individuals collected (of which, number of founders represented)	Year conservation translocations started (R: Reintroduction, AC: Assisted Colonization)	Year downlisted	Red List 2022-1 status	Additional references
<i>Acanthobrama telavivensis</i>	Yarkon bream	Animalia	Actinopterygii	1999	150	R: 2002	2014	VU	(60)
<i>Equus ferus</i>	Takhi; Przewalski's Horse	Animalia	Mammalia	1969	53 (12)	R: 1997	2008	EN	
<i>Hypotaenidia owstoni</i>	Ko'ko'; Guam Rail	Animalia	Aves	1987	22	AC: 1989 R: 1998	2019	CR	(61)
<i>Mustela nigripes</i>	Black-footed Ferret	Animalia	Mammalia	1987	18 (7)	R: 1991	2008	EN	

* Key to Red List categories: CR: Critically Endangered; E: Endangered (pre-1994 category); EN: Endangered; EX: Extinct; NT: Near Threatened; T: Threatened (pre-1994 category); VU: Vulnerable

Species formerly assessed as EW that have experienced genuine improvements in Red List status.

Table S3

Scientific name	Common name	Kingdom	Class	Year last recorded in wild	Extinction year	Published Red List assessments	Notes	Additional references
<i>Emoia nativitatis</i>	Christmas Island whiptail-skink	Animals	Reptilia	2010	2014	EX (2017); CR (2010).	Declines in wild first reported 1998, likely driven by introduced species. Three females caught in 2009 in an attempt to start captive breeding. Last known individual of species died <i>ex situ</i> in 2014.	(62)
<i>Melamprosops phaeosoma</i>	Po'Ouli	Animals	Aves	2004	2004	EX (2019); CR (1994, 1996, 2000, 2004, 2007, 2008, 2009, 2012, 2013, 2016, 2018); T (1988).	By 1997, only three individuals were known. The last sightings for two of these were in December 2003 and January 2004. The last known individual was captured in September 2004, but died in captivity 78 days later in November 2004.	(63)

<i>Partula arguta</i>		Animals	Gastropoda	1991	1995	EX (1996, 2009); EN (1994).	Endemic to Huahine, Society Islands. As is the case for the other <i>Partula</i> species covered by this study, this species was collected into <i>ex situ</i> care prior to extirpation from the wild due to the introduction of the carnivorous snail <i>Euglandina rosea</i> . Last known individual died <i>ex situ</i> in 1995.	(26, 64, 65)
<i>Partula aurantia</i>	Moorean viviparous tree snail	Animals	Gastropoda	1981	1991	EX (2019, 2009, 2006); EN (1994)	Endemic to Moorea, Society Islands. As is the case for the other <i>Partula</i> species covered by this study, this species was collected into <i>ex situ</i> care prior to extirpation from the wild due to the introduction of the carnivorous snail <i>Euglandina rosea</i> . The last individual died in <i>ex situ</i> care in 1991	(66–68)
<i>Partula clarkei</i> (Reclassified from <i>P. turgida</i>)		Animals	Gastropoda	1991	1996	EX (1994, 1996, 2009)	Endemic to Raiatea, Society Islands. As is the case for the other <i>Partula</i> species covered by this study, this species was collected into <i>ex situ</i> care prior to extirpation from the wild due to the introduction of the carnivorous snail <i>Euglandina rosea</i> . Last known individual died <i>ex situ</i> in 1996 after abrupt population declines attributed to	(26, 69)

							microsporidian parasites (69), but the causal agent has since been questioned (26).	
--	--	--	--	--	--	--	---	--

* Key to Red List categories: CR: Critically Endangered; E: Endangered (pre-1994 category); EN: Endangered; EX: Extinct; NT: Near Threatened; T: Threatened (pre-1994 category); VU: Vulnerable

Formerly *ex situ*-restricted species that were never assessed as EW and are now extinct.

Table S4.

Scientific name	Common name	Kingdom	Class	Last report ed in wild	Number of individuals collected (of which, number of founders)	Year conservation translocations started (R: Reintroduction , AC: Assisted Colonization)	Published Red List assessments	Notes	Additional references
<i>Bison bonasus</i>	European bison	Animals	Mammalia	1927	54 (12)	R: 1952	NT (2020); VU (2008); EN (2000, 1996); V (1994, 1990, 1988); "Very rare but believed to be stable or increasing" as <i>B. b. bonasus</i> (1965)	Once distributed across western, central, and south-eastern Europe. Declined alongside human expansion with its associated hunting pressure and ecosystem alteration. Finally extirpated from the wild in 1927, but survived in European zoos. A breeding project commenced in Białowieża, Poland, in 1929, leading to the first reintroductions back into the wild in 1952. Wild populations have grown to the point of the current categorisation of Near Threatened, though the species still depends on conservation management.	(70, 71)

<i>Canis rufus</i>	Red wolf	Animals	Mammalia	1980	14 (12)	R: 1987	CR (2018, 2004, 1996); E (1994, 1990, 1988, 1986, 1982)	Once common in the eastern United States, the red wolf declined due to human persecution and hybridisation with coyotes (<i>Canis latrans</i>). 400 canids were collected from the wild between 1973 and 1980, from which what were believed to be the last fourteen pure red wolves were selected to initiate an <i>ex situ</i> population.	(72)
<i>Chelonoidis hoodensis</i>	Española giant tortoise	Animals	Reptilia	1974	15 (15)	R: 1975 AC: 2015	CR (2017, 2016, 1994 as <i>Geochelone nigra hoodensis</i>)	Endemic to Española, the Galápagos Islands, exploitation for human consumption and habitat degradation drove the wild population to a low point of 14 in 1974, at which point all remaining individuals were removed to establish an <i>ex situ</i> population (joined by an additional male already present in San Diego Zoo). Reintroductions commenced the following year. Used as an ecological replacement for a now-extinct tortoise species on Santa Fe island from 2015.	(73, 74)
<i>Diploaxis siettiana</i>	Jaramago de Alborán	Plants	Magnoliopsida	1974	Not reported	R: 1999	CR (2011, 2006); EX (1998)	Endemic to the island of Alborán, Spain. Extensive human modification of habitat, particularly the introduction of cattle, likely led to declines. Species was not seen after 1974. Reintroductions commencing in 1999 established a self-sustaining population.	(4)

<i>Gymnogyps californianus</i>	California condor	Animals	Aves	1987	22 (14)	R: 1992 & 1994	CR (2020, 2018, 2017, 2016, 2015, 2013, 2012, 2010, 2009, 2008, 2006, 2004, 2000, 1996, 1994); T (1988).	Precipitous population declines in the twentieth century driven largely by persecution and poisoning due to consumption of carcasses containing lead shot. The last known individuals of the species were collected from the wild by 1987 to initiate an <i>ex situ</i> population. Reintroductions started 1992. All reintroduced individuals were collected back into captivity in 1994 due to behavioural problems. Reintroductions recommenced 1995.	(75)
<i>Hibiscadelphus giffardianus</i>		Plants	Magnoliopsida	1930	1	R: 1951	CR (1998); E (1978)	Only one individual of this small tree native to Hawai'i was ever known. This tree died in 1930, but seeds were collected and the species was propagated <i>ex situ</i> . Replanted in original habitat between 1951 and 1964.	(76)
<i>Oryx leucoryx</i>	Arabian oryx	Animals	Mammalia	1972	≥17 (17)	R: 1982	VU (2017, 2011); EN (2008,2003, 1996); E (1994, 1990, 1988, 1986); "Very rare and believed to be	Once distributed across the Arabian Peninsula, experienced steep population declines in the twentieth century. Last reported in the wild in 1972. A captive program was commenced in 1962-63 in the USA with nine individuals, at least three of which were wild caught for conservation purposes. In parallel to this, a collection was established in Riyadh containing additional animals from Saudi Arabia and Qatar, as well	(77)

							decreasing in numbers" (1965).	as individuals from the USA herd. In 1993, the global population was reported to be derived from 17 wild-caught founders.	
<i>Zoogoneticus tequila</i>	Tequila splitfin	Animals	Actinopterygii	2013	6	R: 2015	EN (2019); CR (2009)	Endemic to the upper Río Ameca in Jalisco, Mexico. Extirpated in 2013, probably due to the impacts of introduced species and habitat degradation. Reintroductions started in 2015, establishing a population that is currently growing.	

* Key to Red List categories: CR: Critically Endangered; E: Endangered (pre-1994 category); EN: Endangered; EX: Extinct; NT: Near Threatened; T: Threatened (pre-1994 category); VU: Vulnerable

Formerly *ex situ*-restricted species that were never assessed as EW and have since returned to the wild.

Table S5.

Scientific name	Kingdom	Class	Year last recorded in wild	Extinction year	Notes	Additional references
<i>Aylacostoma stigmaticum</i>	Animals	Gastropoda	1996	2011	Collected from the wild into <i>ex situ</i> care in 1993 prior to the filling of a reservoir in its native habitat. The last known wild population disappeared by 1996. This species became extinct outright in 2011 due to a disease outbreak in <i>ex situ</i> facilities whose causal agent was unidentified but was suspected to be viral.	
<i>Partula faba</i>	Animals	Gastropoda	1994	2015	Endemic to Raiatea and Tahaa, this species was extirpated from the wild after introduction of the carnivorous snail <i>Euglandina rosea</i> . Was maintained <i>ex situ</i> as part of an international project conserving multiple <i>Partula</i> species from the Society Islands, but the last individual of this species died in <i>ex situ</i> care in 2015.	(26)

Species currently assessed (Red List 2022-1) as EW that have gone extinct since their most recent assessment

Table S6.

Scientific name	Kingdom	Class	Proposed true status	Justification	Additional references
<i>Agave lurida</i>	Plants	Liliopsida	Synonym	Synonym of <i>Agave vera-cruz</i> , which is not yet assessed on the Red List but is extant in the wild in its native Mexico as well as introduced populations in South America and Asia.	(78, 79)
<i>Aylacostoma chloroticum</i>	Animals	Gastropoda	Extant in wild	Believed to be extirpated from the wild by 1996, but additional populations were discovered in 1997 and 2003. One population remains, though it is threatened by high parasitic worm burden.	
<i>Cyrtandra waiolani</i>	Plants	Magnoliopsida	Unknown	No indication of <i>ex situ</i> material in 2003 Red List EW assessment. 2019 US Fish and Wildlife review confirms the absence of <i>ex situ</i> material and suggests the possibility of rediscovery in the wild.	(80)
<i>Dombeya rodriguesiana</i>	Plants	Magnoliopsida	Extant in wild	Following IUCN Red List Categories and Criteria version 3.1 (55), we consider a species to be EW only when exhaustive surveys have failed to find an individual in the wild. As the last wild individual of this species remains <i>in situ</i> , we don't yet consider this species EW.	(55, 81)
<i>Euphorbia mayurnathanii</i>	Plants	Magnoliopsida	Synonym	Synonym of <i>Euphorbia antiquorum</i> , which is assessed as Least Concern.	(78)

<i>Erythroxyllum echinodendron</i>	Plants	Magnoli opsida	Synonym	Synonym of <i>Erythroxyllum minutifolium</i> , which is extant in the wild in Cuba	(78, 82)
<i>Leptogryllus deceptor</i>	Animals	Insecta	Unknown	No record of having been kept <i>ex situ</i> , or indeed having been seen or collected beyond its original description in 1910.	
<i>Thermosphaeroma thermophilum</i>	Animals	Malacos traca	Extant in wild	This species was almost extirpated when its native spring dried out in 1988. Flow was restored the following month, flushing out some individuals that had persisted in the plumbing adjoining the spring. The wild population was therefore never fully extirpated, and the species never truly EW.	(83)

Species currently assessed (Red List 2022-1) as EW regarded in this study as erroneous.

Table S7.

Scientific name	Common name	Kingdom	Class	Notes	Additional references
<i>Deppea splendens</i>		Plants	Magnoliopsida	Known from at least three <i>ex situ</i> collections, but suspected to be more widely distributed. Red List assessment indicates need for greater understanding of <i>ex situ</i> populations.	
<i>Encephalartos relictus</i>		Plants	Cycadopsida	The only known wild individual, a male, was collected in 1971 and relocated to the discoverer's farm. Two stems from this plant and material grown from these remain in private collections.	(84)
<i>Lachanodes arborea</i>		Plants	Magnoliopsida	Collected just prior to extirpation in the wild in 2012. Survives in cultivation in several plantations on its native Saint Helena, South Atlantic.	
<i>Stenodus leucichthys</i>	Inconnu	Animals	Actinopterygii	Construction of dams led to the loss of spawning grounds in the Volga, Ural, and Terek rivers. Species survives through artificial propagation, with any individuals in native range derived from releases from hatcheries, which we don't consider here to be reintroductions. No wild individuals or progeny of released individuals or are thought to exist.	(85)

EW Species whose *ex situ* population information is not reported in this study.

Table S8.

Scientific name	Common name(s)	Class	Last record from wild	Collection period	Number of individuals collected (of which, number of founders represented)	<i>Ex situ</i> population size	Number of <i>ex situ</i> holders	Population management	Year conservation translocations started (R: Reintroduction, AC: Assisted Colonization)	Additional references
<i>Acipenser dabryanus</i>	Yangtze sturgeon	Actinopterygii	2000	After 1980	Not reported	Over 21000 first- and second-generation mature fish. Breeding capacity over one million.	Not reported		R: 2007	(86)
<i>Allotoca goslinei</i> *	Banded allotoca	Actinopterygii	2004	2000	Not reported	200	<10	EEP, studbook		
<i>Anaxyrus baxteri</i>	Wyoming toad	Amphibia	1989	1989	10	623	8	SSP, studbook	R: 1995	(87)
<i>Aylacostoma guaraniticum</i>		Gastropoda	1996	1993	Not reported	Unknown	2			

<i>Corvus hawaiiensis</i>	'Alalā; Hawaiian crow	Aves	2002	1970-1996	(9)	118	2	Studbook	R: 2016 (recaptured 2020)	(88, 89)
<i>Cryptoblepharus egeriae</i>	Blue-tailed skink	Reptilia	2010	2009	66	1100	2	PVAs used to guide harvesting for translocations	R: 2017 AC: 2019	(50, 62, 90)
<i>Cyanopsitta spixii</i>	Spix's macaw	Aves	2000	1976	17 (7)	202	5	Studbook	R: 2022	(91)
<i>Cyprinodon alvarezii</i> *	Perrito de Potosi; Potosi pupfish	Actinopterygii	1994	1989	Not reported	175	2	EEP		(92)
<i>Cyprinodon longidorsalis</i> *	La Palma pupfish	Actinopterygii	1994	After 1984 (discovery) and before 1994 (extirpation)	Not reported	364	9	EEP		
<i>Cyprinodon veronicae</i> *	Charco Palma pupfish	Actinopterygii	1995	After 1984 (discovery) and before	Not reported	197	3	EEP		

				1995 (extirpation)						
<i>Elaphurus davidianus</i>	Milu; Père David's deer	Mammalia	1868	Unknown	18 (11)	6796	138	SSP, studbook	R: 1993	(40, 93)
<i>Lepidodactylus listeri</i>	Lister's gecko	Reptilia	2012	2009	43	1350	2	Studbook. PVAs used to guide harvesting for translocations	R: 2019	(62, 90)
<i>Mitu mitu</i>	Alagoas curassow	Aves	1988	1979	5 (3)	90	2	Studbook	R: 2019	(94, 95)
<i>Nectophrynoides asperginis</i>	Kihansi spray toad	Amphibia	2004	2000	499	12000	5		R: 2012	(96, 97)
<i>Notropis amecae*</i>	Ameca shiner	Actinopterygii	2008	2005	6	30	1		R: 2016	(98)
<i>Oryx dammah</i>	Scimitar-horned Oryx	Mammalia	Late 1980s, early	1937 - 1967	48-60	Approximately 23000	>133	SSP, EEP, SMP, studbook. PVAs previously conducted, but not	R: 2016 (Considered here as first attempt to establish a wild population. However, releases into semi-wild	(99–104)

			1990 s					used to manage global population.	contexts have taken place since 1985.)	
<i>Partula garrettii</i> (reclassified from <i>P. tristis</i>)	Iareta tree snail	Gastropod a	1992	1991	Not reported	111	3	EEP, studbook.	R: 2016	(26, 52)
<i>Partula hebe</i>	Tapairu tree snail	Gastropod a	1992	1991	Not reported	135	2	EEP, studbook.	R: 2016	(26, 52)
<i>Partula mirabilis</i>	Navenave tree snail	Gastropod a	1985	1984 - 1985	Not reported	406	3	EEP, studbook.	R: 2018	(26, 52)
<i>Partula mooreana</i>	Eimeo tree snail	Gastropod a	1985	1985	Not reported	797	2	EEP, studbook.	R: 2016	(26, 52, 66)
<i>Partula navigatoria</i>	Faatere tree snail	Gastropod a	1991	1991	Not reported	796	2	EEP, studbook.	R: 2016	(26, 52)
<i>Partula nodosa</i>	Niho tree snail	Gastropod a	1984	1984	Not reported	10647	7	EEP, studbook.	R: 2015	(26, 66)
<i>Partula rosea</i>	Tarona tree snail	Gastropod a	1987	1987	Not reported	348	3	EEP, studbook.	R: 2019	(26, 105)

<i>Partula suturalis</i>	Taamu tree snail	Gastropod a	1986	1980 - 1986	Not reported	464	5	EEP, studbook.	R: 2016	(26, 52)
<i>Partula tohiviana</i>	Tohiewa tree snail	Gastropod a	1982	1982	Not reported	1309	4	EEP, studbook.	R: 2016	(26, 52, 66)
<i>Partula varia</i>	Mauru tree snail	Gastropod a	1994	1991 - 1994	Not reported	3894	5	EEP, studbook.	R: 2019	(26, 105)
<i>Skiffia francesae*</i>	Golden skiffia	Actinopte rygii	2010	1976 - 2006	<50	>1000	>50	EEP	R: 2021	
<i>Todiramphus cinnamominus</i>	Sihek; Guam kingfisher	Aves	1988	1984 - 1986	29 (16)	135	24	SSP, studbook. PVAs used to inform management.		(106, 107)
<i>Xiphophorus couchianus*</i>	Monterrey platyfish	Actinopte rygii	1967	1961	Not reported	1483	6	Studbook		(108)
<i>Xiphophorus meyeri*</i>	Marbled swordtail; Muzquiz platyfish	Actinopte rygii	1997	1983	Not reported	Approximately 1100	>1	Studbook		(108)

<i>Zenaida graysoni</i>	Socorro dove	Aves	1972	1925	17	159	38	EEP, studbook		(33, 109)
-------------------------	--------------	------	------	------	----	-----	----	---------------	--	-----------

The collection history and present status of EW animal species held *ex situ*. Scientific names marked with an asterisk (“*”) denote species for which we expect hobbyists and private collectors to hold additional individuals.

Table S9.

Scientific name	Class	Last record from wild	Collection period	Number of individuals collected	Number of <i>ex situ</i> holders	Year reintroductions started (no known attempted assisted colonizations for plants)	Additional references
<i>Abutilon pitcairnense</i>	Magnoliopsida	2005	2003	1	5		(110)
<i>Aloe silicicola</i>	Liliopsida	1920	1920	Not reported	1		
<i>Alphonsea hortensis</i>	Magnoliopsida	1969	Not reported	Not reported	1		
<i>Amomum sumatranum</i>	Liliopsida	1921	Not reported	Not reported	1		

<i>Arachis rigonii</i>	Magnolio psida	1959	1959	Not reported	1		
<i>Bromus bromoideus</i>	Liliopsid a	1935	Not reported	Not reported	6	2021	(111)
<i>Bromus interruptus</i>	Liliopsid a	1972	Not reported	Not reported	12	2003, 2013	
<i>Brugmansia arborea</i>	Magnolio psida	Never recorded in the wild	Not reported	Not reported	57		
<i>Brugmansia aurea</i>	Magnolio psida	Never recorded in the wild	Not reported	Not reported	40		
<i>Brugmansia insignis</i>	Magnolio psida	Never recorded in the wild	Not reported	Not reported	9		

<i>Brugmansia sanguinea</i>	Magnoliopsida	Never recorded in the wild	Not reported	Not reported	65		
<i>Brugmansia suaveolens</i>	Magnoliopsida	Never recorded in the wild	Not reported	Not reported	70		
<i>Brugmansia versicolor</i>	Magnoliopsida	Never recorded in the wild	Not reported	Not reported	33		
<i>Brugmansia vulcanicola</i>	Magnoliopsida	Never recorded in the wild	Not reported	Not reported	5		
<i>Camellia amplexicaulis</i>	Magnoliopsida	Unknown	Not reported	Not reported	11		

<i>Corypha taliera</i>	Liliopsida	1979	Not reported	Not reported	6		
<i>Cyanea pinnatifida</i>	Magnoliopsida	2001	Not reported	1	6	2005	(112)
<i>Cyanea superba</i>	Magnoliopsida	Around 2000	Not reported	3	5	1998	(113)
<i>Deppea splendens</i>	Magnoliopsida	1981	1976	Not reported	Unknown		(114)
<i>Diplazium laffanianum</i>	Polypodiopsida	1905	Not reported	5	3	2014	(115)
<i>Encephalartos brevifoliolatus</i>	Cycadopsida	2004	Not reported	Not reported	1		
<i>Encephalartos heenanii</i>	Cycadopsida	2006	Not reported		12		

<i>Encephalartos nubimontanus</i>	Cycadopsida	2001	Not reported	Not reported	10		
<i>Encephalartos relictus</i>	Cycadopsida	1971	1971	1	Unknown		(84)
<i>Encephalartos woodii</i>	Cycadopsida	1916	Not reported	1	14		
<i>Franklinia alatamaha</i>	Magnoliopsida	1803	Not reported	Not reported	108	2002	(116)
<i>Furcraea macdougallii</i>	Liliopsida	1973	1953-1965	Not reported	14		
<i>Kalanchoe fadeniorum</i>	Magnoliopsida	1977	Not reported		4		
<i>Kokia cookei</i>	Magnoliopsida	1918	1915	1	7		

<i>Lachanodes arborea</i>	Magnoliopsida	2012	Not reported	Not reported	Unknown		
<i>Lysimachia minoricensis</i>	Magnoliopsida	1926	1926	Not reported	35	1959, 1993	
<i>Mangifera casturi</i>	Magnoliopsida	Pre-1986	Not reported	Not reported	3		
<i>Mangifera rubropetala</i>	Magnoliopsida	Never recorded in the wild	Not reported	Not reported	3		
<i>Nymphaea thermarum</i>	Magnoliopsida	2008	1987	Not reported	11		(117)
<i>Ochrosia brownii</i>	Magnoliopsida	2006	Not reported	Not reported	10		
<i>Rhododendron kanehirai</i>	Magnoliopsida	1984	Not reported	Not reported	5		

<i>Senecio leucopeplus</i>	Magnoliopsida	2007	Not reported	Not reported	1		
<i>Sophora toromiro</i>	Magnoliopsida	1960	1950-1956	1	17	Multiple failed reintroductions from 1965	(118, 119)
<i>Trochetiopsis erythroxylo</i>	Magnoliopsida	1950s	Not reported	Not reported	9	1980s	

The collection history and present status of EW plant species held *ex situ*.

1 **Table S9.**

Species	Family	Order	Seed type predicted based on	Probability of recalcitrance	Predicted storage behaviour
<i>Abutilon pitcairnense</i>	Malvaceae	Malvales	Genus	0.002883	Orthodox
<i>Aloe silicicola</i>	Xanthorrhoeaceae	Asparagales	Genus	0.001743	Orthodox
<i>Alphonsea hortensis</i>	Annonaceae	Magnoliales	Family	0.513798	Recalcitrant
<i>Amomum sumatranum</i>	Zingiberaceae	Zingiberales	Family	0.012481	Orthodox
<i>Arachis rigonii</i>	Leguminosae	Fabales	Family	0.010307	Orthodox
<i>Bromus bromoideus</i>	Poaceae	Poales	Species	0	Orthodox
<i>Bromus interruptus</i>	Poaceae	Poales	Species	0	Orthodox
<i>Brugmansia arborea</i>	Solanaceae	Solanales	Family	0.00953	Orthodox
<i>Brugmansia aurea</i>	Solanaceae	Solanales	Family	0.032387	Orthodox
<i>Brugmansia insignis</i>	Solanaceae	Solanales	Family	0.157526	Orthodox
<i>Brugmansia sanguinea</i>	Solanaceae	Solanales	Family	0.019821	Orthodox

<i>Brugmansia suaveolens</i>	Solanaceae	Solanales	Family	0.128313	Orthodox
<i>Brugmansia versicolor</i>	Solanaceae	Solanales	Family	0.049257	Orthodox
<i>Brugmansia vulcanicola</i>	Solanaceae	Solanales	Family	0.032461	Orthodox
<i>Camellia amplexicaulis</i>	Theaceae	Ericales	Family	0.165695	Orthodox
<i>Corypha taliera</i>	Arecaceae	Arecales	Family	0.726928	Recalcitrant
<i>Cyanea pinnatifida</i>	Campanulaceae	Asterales	Genus	0.001267	Orthodox
<i>Cyanea superba</i>	Campanulaceae	Asterales	Genus	0.003024	Orthodox
<i>Deppea splendens</i>	Rubiaceae	Gentianales	Family	0.007442	Orthodox
<i>Encephalartos brevifoliolatus</i>	Zamiaceae	Cycadales	Order	0.009372	Orthodox
<i>Encephalartos nubimontanus</i>	Zamiaceae	Cycadales	Order	0.01957	Orthodox
<i>Encephalartos woodii</i>	Zamiaceae	Cycadales	Order	0.013487	Orthodox
<i>Franklinia alatamaha</i>	Theaceae	Ericales	Family	0.013332	Orthodox
<i>Furcraea macdougallii</i>	Asparagaceae	Asparagales	Family	0.012481	Orthodox
<i>Kokia cookie</i>	Malvaceae	Malvales	Family	0.040725	Orthodox
<i>Lachanodes arborea</i>	Compositae	Asterales	Family	0.012481	Orthodox
<i>Lysimachia minoricensis</i>	Primulaceae	Ericales	Species	0	Orthodox

<i>Mangifera casturi</i>	Anacardiaceae	Sapindales	Genus	0.877644	Recalcitrant
<i>Mangifera rubropetala</i>	Anacardiaceae	Sapindales	Genus	0.92769	Recalcitrant
<i>Nymphaea thermarum</i>	Nymphaeaceae	Nymphaeales	Genus	0.022476	Orthodox
<i>Ochrosia brownie</i>	Apocynaceae	Gentianales	Family	0.004237	Orthodox
<i>Rhododendron kanehirai</i>	Ericaceae	Ericales	Genus	0.059085	Orthodox
<i>Senecio leucopeplus</i>	Compositae	Asterales	Genus	0.001912	Orthodox
<i>Sophora toromiro</i>	Leguminosae	Fabales	Genus	0.006741	Orthodox
<i>Trochetiopsis erythroxyton</i>	Malvaceae	Malvales	Species	0	Orthodox

2

3 **Modelled predictions of seed storage behaviour for 35 EW plant species**