

# Plant Select® Garden

Designed by Emily Goldman for Plant Select



Our first and only garden exclusively designed with Plant Select, a nonprofit collaboration of CSU and Denver Botanic Gardens. Nestle these plants among decorative rocks in your existing soil amended with pea gravel to facilitate good drainage. Rock mulch is preferred over wood mulch for this dry loving garden. However, these plants are resilient and fairly adaptable. If you favor wood mulch, once established, plants in this garden will thrive with very low water. A variety of bees, butterflies, and other beneficial insects will enjoy this garden with bloom times that extend from Spring to Fall's first hard frost.

- Full sun exposure (minimum of 6 hrs of direct sun per day)
- Planting map covers 60 sq ft
- Blooms spring to first hard frost
- Low water to xeric
- Hardiness range: 6,200 ft to 8,125 ft

## Individual Plant Information

### AUTUMN SAPPHIRE SAGE - *Salvia reptans* 'P0165'

QTY. 1



Glossy green, willowy leaves all season long are topped with clouds of small, sapphire-blue flowers through autumn.

- Mature height 18-24"  
Mature spread 18-24"
- Full sun to partial sun
- Dry to xeric water needs
- Blooms fall
- Attracts bees, butterflies, hummingbirds
- Resists deer and rabbits

**CARE:** Very low maintenance. Plant will stay most compact with little water in well draining soils. Adaptable to clay, loam, or sandy soils.

### BLONDE AMBITION BLUE GRAMA GRASS - *Bouteloua gracilis* 'Blonde Ambition'

QTY. 1



Displays elegant blue green foliage with many chartruese flowers that turn blonde as the season progresses.

- Mature height 28-32"  
Mature spread 28-32"
- Full sun to part shade
- Adaptable with moderate to xeric water needs
- Blooms late spring to summer with great winter interest
- Attracts birds
- Resists deer

**CARE:** This adaptable grass thrives in most soils except very heavy and very wet clay. Be sure to not let this grass sit in wet soils for long.

### ENGELMANN'S DAISY - *Engelmannia peristenia*

QTY. 1



A tough plant that blooms May to frost with showy golden-yellow flowers. The fuzzy cut green foliage adds an interesting lush texture to the very dry garden.

- Mature height 18-24"  
Mature spread 18-30"
- Full sun
- Adaptable with moderate to dry water needs
- Blooms spring to frost
- Attracts bees, butterflies
- Resists deer and rabbits

**CARE:** It is particularly happy in hot, poor soil planting conditions where it thrives with minimal care. It appreciates supplemental watering during dry spells. Adaptable to clay, loam, or sandy soils. Deadheading not required.

KOREAN FEATHER REED GRASS - *Calamagrostis brachytricha*

QTY. 3



Clump-forming grass with stiff, upright foliage. It is accented by airy pink plumes in summer that fade to creamy white in fall. The seed heads provide food for birds and remain attractive throughout the winter.



Mature height 3-4'  
Mature spread 20-24"



Full sun to part shade



Adaptable with moderate to low water needs



Blooms late summer



Attracts birds



Resists deer



**CARE:** Adaptable to clay, loam or sandy soils. It will go quite dry but will display fuller foliage with more water.

ORANGE CARPET HUMMINGBIRD TRUMPET - *Zauschneria garrettii* 'PWWG015'

QTY. 1



Rapidly spreading groundcover with masses of orange-scarlet flowers mid to late summer.



Mature height 4-6"  
Mature spread 18-24"



Full sun to filtered sun



Adaptable with moderate to low water needs



Blooms mid to late summer



Attracts bees, birds, butterflies



Resists deer



**CARE:** To help establish new transplants, provide supplemental winter water for the first couple of years if winter conditions are dry. Plant in full sun for best growth. Thrives in disturbed soils and well draining soils.

PARTRIDGE FEATHER - *Tanacetum densum amani*

QTY. 1



Plush ever-silver mats of gorgeous feathery foliage underpins other plants bringing year-round interest to the dry loving garden.



Mature height 6-8"  
Mature spread 8-12"



Full sun



Xeric once established



Blooms late spring to early summer



Attracts bees, butterflies, hummingbirds



Resists deer



**CARE:** For best appearance, avoid overhead watering. Adaptable to most soils and exposures. Keep this plant on the dry side for best results.

PIKE'S PEAK PURPLE PENSTEMON - *Penstemon x mexicali* 'Pikes Peak Purple'

QTY. 3



An attractive mound of violet purple flowers. Snap spent flower stalks to promote flowering summer through fall.



Mature height 14-18"  
Mature spread 12-14"



Full sun to partial sun



Adaptable with moderate to dry water needs



Blooms summer to fall



Attracts bees, butterflies, hummingbirds



Resists deer and rabbits



**CARE:** Support a variety of bees with this durable and easy to grow perennial.

RED ROCKS PENSTEMON - *Penstemon x mexicali* 'Red Rocks'

QTY. 3



A succession of bright rose flowers above narrow, dark green leaves that form an attractive mound. Attract hummingbirds and a variety of bees with this easy care perennial.



Mature height 14-18"  
Mature spread 12-14"



Full sun to partial sun



Adaptable with moderate to dry water needs



Blooms in summer



Attracts bees, birds, butterflies



Resists deer and rabbits



**CARE:** Snap spent flower stalks to prolong blooming on this easy care perennial.

VERMILION BLUFFS® MEXICAN SAGE - *Salvia darcyi* 'PScarl'

QTY. 1



Brilliant red spires attract hummingbirds late summer to fall. Best in full sun planted in well draining soil.



Mature height 36-40"  
Mature spread 20-30"



Full sun to partial sun



Adaptable with moderate to xeric water needs



Blooms in summer to fall



Attracts bees, hummingbirds



Resists deer

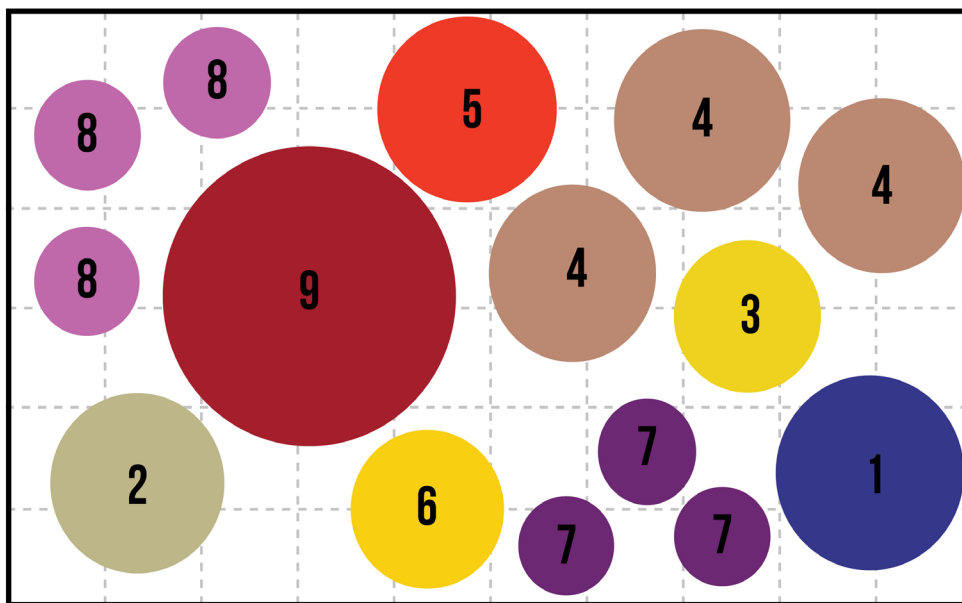


**CARE:** It loves heat and is slow to emerge in spring. Be sure to plant in well-drained soil. Remove extra mulch to allow air and drainage for this dry loving plant in summer.

# Plant Maintenance By Season

MAINTENANCE TASKS	PLANT
<b>SPRING (AFTER FIRST GROWING SEASON)</b>	
Cut back old growth to 6" to 8" as new growth emerges in spring.	Autumn Sapphire Sage, Blonde Ambition Blue Grama Grass, Korean Feather Reed Grass, Pike's Peak Penstemon, Red Rocks Penstemon, Vermillion Bluffs Mexican Sage
Divide mature plants, in early spring every 3 years, as needed.	Korean Feather Reed Grass, Orange Carpet Hummingbird Trumpet
<b>SUMMER</b>	
Water sparingly once established.	Partridge Feather, Vermillion Bluffs Mexican Sage
Deadhead spent flowers to encourage new blooms.	Pike's Peak Penstemon, Red Rocks Penstemon
<b>FALL</b>	
Leave last blooms to self-seed and/or feed the birds come winter.	Vermillion Bluffs Mexican Sage, Pike's Peak Penstemon, Red Rocks Penstemon
Prune back as desired. New growth will appear on woody stems.	Partridge Feather
<b>WINTER</b>	
Leave stems standing over the winter to protect the crown from winter moisture. Dried blossoms, flower stalks, and grasses provide winter interest, food for birds and nesting sites for insects. Leave your garden up all winter and save garden clean out for late spring.	All grasses and perennials.

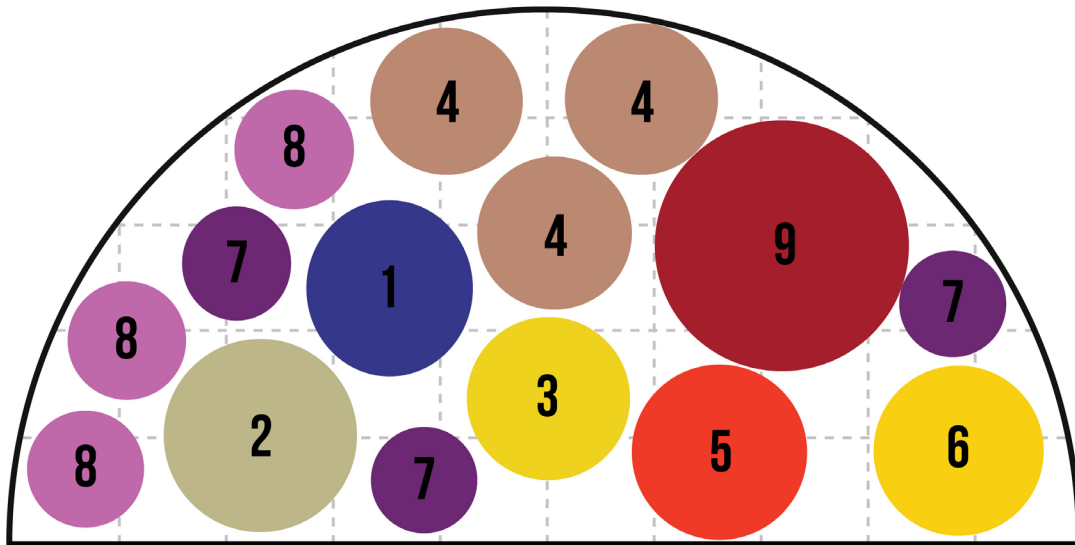
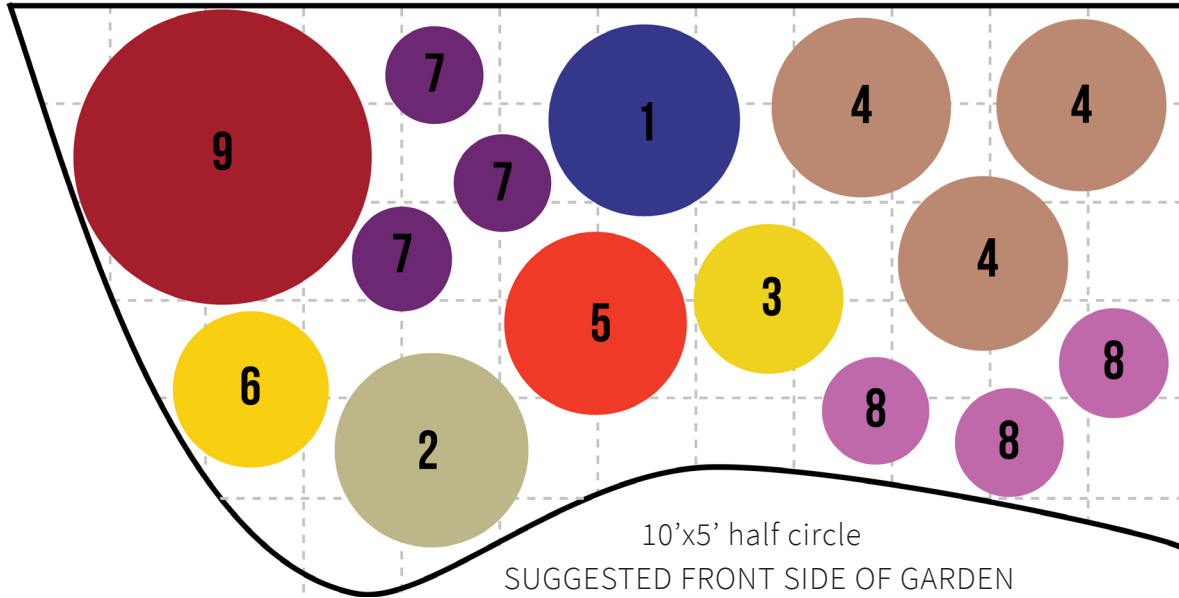
## Plant by Number Design Suggestions



6'x10' rectangle

SUGGESTED FRONT SIDE OF GARDEN

# Plant by Number Design Suggestions



## Key

- |   |  |
|---|--|
| 1. Autumn Sapphire Sage (Qty. 1)              | 6. Partridge Feather (Qty. 1)              |
| 2. Blonde Ambition Blue Grama Grass (Qty. 1)  | 7. Pike's Peak Purple Penstemon (Qty. 3)   |
| 3. Engelmann's Daisy (Qty. 1)                 | 8. Red Rocks Penstemon (Qty. 3)            |
| 4. Korean Feather Reed Grass (Qty. 3)         | 9. Vermillion Bluffs Mexican Sage (Qty. 1) |
| 5. Orange Carpet Hummingbird Trumpet (Qty. 1) |  |

1 box = 1 square foot