

The saxicolous species of the genus *Usnea* subgenus *Usnea* (Parmeliaceae) in Argentina and Uruguay

Juan Manuel Rodriguez^{1,3}, Cecilia Estrabou¹, Camille Truong², and
Philippe Clerc²

¹ *Centro de Ecología y Recursos Naturales Renovables, Facultad de Ciencias Exactas, Físicas y Naturales. Universidad Nacional de Córdoba. Av. Vélez Sarsfield 299 Córdoba. Argentina;* ² *Conservatoire et Jardin botaniques de la Ville de Genève, Case Postale 60, CH-1292 Chambésy (GE), Switzerland*

ABSTRACT. Eight primarily saxicolous *Usnea* subgenus *Usnea* species are reported from Argentina and Uruguay: *U. amblyoclada* (Müll. Arg.) Zahlbr. (*syn. nov. U. pinnata* Räsänen), *U. densirostra* Motyka, *U. durietzii* Motyka (*syn. nov. U. caespitia* Motyka), *U. exigua* J.M. Rodr. & P. Clerc *sp. nov.*, *U. fastuosa* (Müll. Arg.) Zahlbr., *U. hieronymii* Kremp. (*syn. nov. U. hieronymii* var. *adusta* Kremp.), *U. lutii* J.M. Rodr. & P. Clerc *sp. nov.* and *Usnea saxidilatata* J.M. Rodr. & P. Clerc *sp. nov.* are described with morphological, anatomical and chemical data. Their taxonomy and distribution are discussed. A key to the saxicolous species, including those occurring secondarily on rocks (i.e., *U. columbiana* Motyka, *U. cornuta* Körb., *U. dasaea* Stirt. and *U. cf. perhispidella* J. Steiner) is provided.

KEYWORDS. South America, taxonomy, lichens, systematics.



Usnea is a speciose and cosmopolitan genus easily identified by the fruticose thallus with a central axis and the presence of usnic acid in the cortex. At the species level, the taxonomy of the genus remains very complex, due to the high intraspecific morphological variation. In the last decades, numerous taxonomical studies have been published in North America (Clerc 2007; Clerc & Herrera-Campos 1997; Halonen et al. 1998; Herrera-Campos et al. 1998, 2001), Europe (Clerc 1984, 1987a, 1987b, 1992, 1997, 2004; Fos & Clerc 2000; James et al. 1992), Africa (Clerc 2006; Swinscow & Krog 1974, 1975, 1976a, 1976b, 1978,

1979), Australia (Stevens 2004) and Japan (Ohmura 2001; Ohmura & Kanda 2004; Ohmura & Kashiwadani 2000). So far, Argentinean and South American species have not received a taxonomic treatment using a species concept as defined in Clerc (1998).

Most *Usnea* species are primarily corticolous, occurring secondarily on rock when environmental conditions are optimal. In the subgenus *Usnea*, taxa mainly or exclusively saxicolous are rare (Clerc & Herrera Campos 1997). In Argentina, however, numerous communities of saxicolous lichens, including *Usnea* species growing almost exclusively on rocks, occur. Motyka mentioned four of saxicolous *Usnea* from Argentina in his monograph (1936–1938): *U. amblyoclada* (Müll. Arg.) Zahlbr.,

³ Corresponding author's e-mail:

jmrodriguez@efn.uncor.edu

DOI: 10.1639/0007-2745-114.3.504

U. densirostra Motyka, *U. durietzii* Motyka and *U. hieronymii* Kremp. Other floristic studies mentioned saxicolous *Usnea* species occurring in Argentina (Räsänen 1939; Lamb 1958; Osorio 1968, 1987). Climate, geology and vegetation of Uruguay are similar to central East Argentina, and hence similar communities with saxicolous *Usnea* species occur in these regions. Osorio (1967, 1980, 1981, 1982, 1992, 1993, 1995, 1996, 2001, 2005) inventoried these communities in Uruguay.

Walker (1985) in her monograph of subgenus *Neuropogon* included *Usnea durietzii* in this group and shortly discussed *U. amblyoclada*, *U. densirostra* and *U. hieronymii* to differentiate them from the *Neuropogon* species. Wirtz et al. (2006), however, showed that *Neuropogon* is polyphyletic. But none of the species discussed here display the variegated black pigmentation and the black or reddish rufous brown apothecial disks that are typical for *Neuropogon* species.

The aim of the present study is to provide detailed and modern descriptions of seven species as well as distribution maps of the primarily saxicolous *Usnea* species occurring in Argentina, taking also into account material from Uruguay. All species occurring primarily and secondarily on rocks are included in the key.

MATERIAL AND METHODS

Specimens were collected mainly by the first author between 2004 and 2008 in the different phytogeographical units of Argentina (Cabrera 1971). In addition saxicolous specimens collected in 1989 by Sibylle Vermont Grundlehner in the Tucuman province and deposited in G were studied. Herbarium specimens from BAB, BAFC, BM, CORD, CTES, G, LIL, M, MERL, MVM, PC, SI, TUR, W and the private collections of Hector Osorio (Uruguay) were studied.

The species concept follows Clerc (1998). Discriminating between characters that are strongly modified by environmental factors and those that are more intrinsic to a species is a key element in the systematics of *Usnea* (Clerc 1998). We selected a variety of characters useful in the discrimination of the saxicolous species. The following features were found to be of high taxonomic value: habit, pigmentation of the trunk, shape of branches and

segments, presence of pseudocyphellae, morphology of soralia and isidiomorphs, thickness of cortex, medulla and central axis, presence of pigments in the medulla and chemistry. Characters found to be of little or no value in the delimitation of species were, for example: type of branching, morphology of papillae and colour of the thallus.

Morphological characters were studied according to Clerc & Herrera Campos (1997), Clerc (1998) and Herrera Campos et al. (1998). The thickness of cortex (C), medulla (M) and central axis (A) were measured and the thickness of each structure was calculated in percentages of the whole width of the measured branch (CMA; Clerc 1984, 1987a). In specimens with apothecia, spore width and length of 10 to 20 spores were measured. Significant differences of spore length and width between species were tested with non parametric Kruskal Wallis tests, using Infostat (Infostat, 2009). Lichen substances were studied by thin layer chromatography with A, B, C and G solvents, following Culberson & Ammann (1979) and White & James (1985). The spot test reactions with K, C and Pd are mentioned for each chemotype.

RESULTS AND DISCUSSION

A. Morphology

Thallus. The species growing primarily on rocks are usually shrubby and compact, with short thalli and strongly divergent branches (Figs. 2A, 3A, 6A & 7A). Corticolous species growing incidentally on rocks may be sub-pendulous or pendulous, with branches hanging, divergent or running \pm parallel.

Trunk and basal part. The pigmentation of the trunk in the first few mm from the holdfast is diagnostic for many species (Figs. 5A & 6A) (Clerc 1998). However, the basal part is frequently covered by dust or sand crystals, obscuring the basal part, and hence the pigmentation.

Some species described here exhibit a special kind of holdfast that seems to proliferate horizontally at the surface of the substrate with numerous branches growing vertically and tightly appressed (Figs. 4A, 5A, 6A, 7B & 8A). This kind of holdfast, called a proliferating holdfast, has been described in species of subg. *Neuropogon* (Walker 1985, fig. 20). Ontogenetic studies are needed in order to fully

Table 1. Spores size of the saxicolous fertile species of *Usnea* subgenus *Usnea* in Argentina and Uruguay. The average values, standard deviation, and extreme values of length and width are given in μm ; n = number of spores measured.

Species	n	Length	Width
<i>U. densirostra</i>	64	(6.4–) 7.0– <u>7.8</u> –8.6 (–11.2)	(3.2–) 3.8– <u>4.6</u> –5.4 (–7.5)
<i>U. exigua</i>	20	(5.6–) 6.3– <u>7.1</u> –7.9 (–8.8)	(3.2–) 3.9– <u>4.7</u> –5.5 (–6.4)
<i>U. fastuosa</i>	63	(6.4–) 6.8– <u>7.9</u> –9.0 (–10.4)	(3.2–) 4.0– <u>5.0</u> –6.0 (–7.2)
<i>U. hieronymii</i>	89	(6.4–) 7.6– <u>8.4</u> –9.2 (–10.4)	(4.0–) 4.6– <u>5.4</u> –6.2 (–7.2)

understand this special kind of holdfast proliferation, occurring only in saxicolous species. Sometimes, as in *Usnea densirostra* for instance, many large branches arise from the basal part giving the false impression of a proliferating holdfast. However, when looking carefully it can be seen that all these branches diverge from one unique trunk.

Branches. In longitudinal section, main branches can be cylindrical, tapered or irregular (Clerc & Herrera Campos 1997). Lateral branches may be distinctly narrowed at their point of attachment. In transversal sections the main branches are terete, ridged, alate or elliptic (Herrera Campos et al. 1998). When the branches are distinctly segmented, segments are cylindrical or inflated in longitudinal sections. Segments can be deformed by the presence of depressions (foveoles) and transversal furrows.

Fibrils, papillae, fiberclles. See descriptions and taxonomic importance of these structures in Clerc (1998), Clerc & Herrera Campos (1997), Herrera Campos & Clerc (1998).

Pseudocyphellae and maculae. Pseudocyphellae are common among saxicolous species in Argentina. They appear as breaks in the cortex, exposing the medulla but never producing soredia. Pseudocyphellae are elongated, twisted, circular or irregular (Figs. 6B & 7C). Maculae are whitish areas on the branches with a thinner cortex (Ohmura 2001). They can be punctiform to effigurate (Fig. 4C). Some species described here display maculae with a broken cortex, and hence with the medulla exposed; these are regarded as pseudocyphellae (Fig. 5C).

Soralia are decorticated areas of the thallus where soredia and/or isidiomorphs are produced. The morphology of soralia is one of the most important characters in the taxonomy of *Usnea* (Clerc 1998). Different types of soralia have been described by Clerc (1987). The origin of the soralia is

also important, i.e. arising *ad initio* on the cortex, from fiberclles, from pseudocyphellae, from eroded tubercles or from cracks.

Isidiomorphs and isidio-fibrils. Isidiomorphs (Clerc 1998) are frequently produced in soralia of saxicolous *Usnea* species in Argentina (Figs. 3C, 7D & 8C). They are often black pigmented at their top, probably as a result of the saxicolous exposition (Øvstedal & Lewis Smith 2001; Wirtz et al. 2006). Walker (1985) suggested that some species of the subgenus *Neuropogon* have pseudoisidia (isidia-like structures lacking a true original cortex) in contrast with other species with true isidia (with true primary cortex and a longer size than pseudoisidia). However, no true isidia have been found in *Usnea* so far. Isidio-fibrils were described by Truong et al. (2011).

Apothecia. The location and morphology of apothecia are uniform in saxicolous species of the genus *Usnea* in Argentina. Nevertheless, the distribution of fibrils on the apothecia margin might have some taxonomic importance. A common modification linked to the saxicolous habitat is that apothecia tend to become flat and the disc to break (Figs. 2A, 4B, 5B & 6A).

B. Anatomy

Spores. According to Clerc (1984) spore size has often a taxonomic value in the delimitation of fertile species. Spore width and length were significantly higher (Kruskal Wallis test $p < 0.05$) in *U. hieronymii* than the other species (Table 1). Spore length of *Usnea exigua* was significantly shorter than the rest of the species. Spore width did not differ significantly among species with the exception of *U. hieronymii*. Spore size of *U. densirostra* and *U. fastuosa* was not significantly different. However, since the values of spore length and width overlap between the species, they remain difficult to use as taxonomic characters.

are depsidones of the β -orcinol group. Three unknown substances are detected: unknown I (Rf: 6/2/5 solvents A/B/C yellow after UV) found in *Usnea exigua*; unknown II (Rf: 5/1/3 solvents A/B/C yellow after UV) and unknown III (Rf: 6/2/4 solvents A/B/C yellow after UV), both found in *U. fastuosa*. The accessory substances not defined chemotypes.

D. Ecology and distribution

In Argentina, saxicolous species of the genus *Usnea* occur in mountains areas, mainly on rock outcrops. Among the primarily saxicolous species *U. amblyoclada* and *U. durietzii* are the only species that have been found to occur rarely also on shrubs. Additionally some primarily corticolous species, such as *U. columbiana*, *U. cornuta* and *U. dasaea*, occur occasionally on rocks. The saxicolous species frequently colonize large surfaces of exposed boulders and can sometimes be locally very abundant (Supplementary Fig. 1).

The orographic system of Southern South America from west to east corresponds to the Andes (including pre-Andes) and the Sierra Chaco Mountains (Sierras Pampeanas) (Fig. 1). Between them and towards the Atlantic Ocean stretch large portions of lowlands and valleys with woodlands, shrublands and grasslands. In Buenos Aires province the Ventania and Tandilia chains form very old mountains at low altitude in the middle of the Pampean steppe region. These systems are considered as true “continental islands” or “traps” in the Pampas (De la Sota et al. 2004). There is a continuity between these mountains and those from Uruguay and Brazil. The gradient of climate and vegetation from north to south and from west to east hence influences the presence of *Usnea* species.

Primarily saxicolous species of *Usnea* in Argentina show different distribution patterns (Supplementary Fig. 2). *Usnea amblyoclada* and *U. durietzii* are the commonest saxicolous species in Argentina, the later occurring only in the Andes. *Usnea saxidilatata* is common in the higher mountains of the Central Andes and the Sierra Chaco (above 2000 m), where the climate is temperate to cold. *Usnea hieronymii* also occurs in the higher mountains, but is, however, lacking from the Central Andes.

The fertile species *Usnea densirostra* is the commonest saxicolous species in the eastern

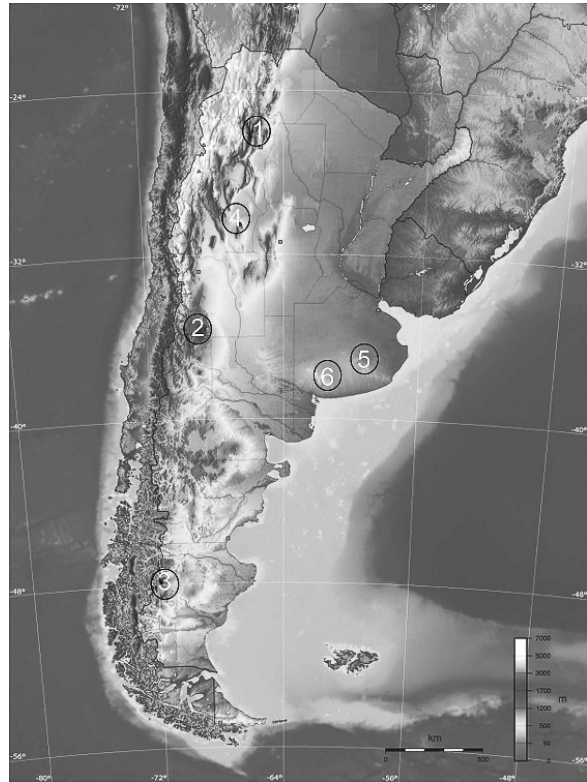


Figure 1. Map of Argentina showing the main mountains chains. 1–3. Andes (1. Northern Andes 2. Central Andes. 3. Patagonia). 4. Sierra Chaco mountains (Sierras Pampeanas). 5. Tandilia. 6. Ventania.

mountains and in Uruguay where the climate is warmer. It is rare in the Sierra Chaco and there is only one specimen known from Patagonia. *Usnea fastuosa* and *U. exigua* have been found only in the Province of Buenos Aires and in Uruguay.

KEY TO PRIMARILY AND SECONDARILY

SAXICOLOUS SPECIES

- 1. Without soralia and isidiomorphs 2
- 1. With soralia and isidiomorphs 5
 - 2. Elongated pseudocyphellae and/or maculae absent on main branches (they might be present on fibrils however). Thallus arising from an individual trunk, holdfast not proliferating. *U. densirostra*
 - 2. Elongated pseudocyphellae and/or maculae absent or present. Thallus with a proliferating holdfast, not arising from an individual trunk 3
- 3. Medulla K ± yellowish brown and Pd + red orange (protocetraric acid); thallus always small (to 2–3 cm) *U. exigua*
- 3. Medulla K+ yellow to red orange and Pd+ yellow to red orange (norstictic and/or salazinic acids) or K–, Pd– (usnic acid only) thallus larger. 4

- 4 Maculae absent, pseudocyphellae present, branches irregular, not cylindrical, not distinctly annulated; segments \pm ridged, medulla white *U. hieronymii*
4. Maculae present, pseudocyphellae absent (in terminal branches the maculae may look like pseudocyphellae), branches distinctly cylindrical and annulated; segments terete, medulla orange *U. fastuosa*
5. Thallus with red dots visible mainly at the base, sometimes in the whole thallus *U. durietzii*
5. Thallus without red dots 6
6. Thallus arising from a proliferating holdfast; elongate pseudocyphellae present or not 7
6. Thallus arising from a single trunk, without a proliferating holdfast; elongate pseudocyphellae absent 8
7. Foveoles usually present on primary branches close to the basal part; medulla moderately thin (14.8–20.7%–26.6), axis moderately thick (36.3–47.5%–58.7) *U. saxidilatata*
7. Foveoles absent; medulla thin (9.2–12.8%–16.4), axis very thick (54.5–62.3%–70.1) *U. lutii*
8. Cortex thick (7.1–9.7%–12.3) and mat, medulla thin (10.0–13.8%–17.6), lateral branches never constricted; base distinctly jet black pigmented; foveoles and transversal furrow never present; soralia minute arising at the top of papillae *U. columbiana*
8. Cortex thinner (< 9%) and glossy, medulla thicker (>15%), lateral branches constricted or not; base jet black pigmented or not, foveoles and transversal furrows present or absent; soralia minute or enlarging, arising on fiberclles or on the cortex *ad initio* 9
9. True fibrils absent or few, with instead numerous small isidiomorphs often developing into longer isidiofibrils, growing from punctiform soralia on main and secondary branches; stictic acid as main substance always present *U. cf. perhispidella*
9. True fibrils present; isidiomorphs present or absent, remaining short, not developing into isidiofibrils; stictic acid present or not 10
10. Isidiomorphs thick, usually not clustered but often sitting alone on a punctiform soralia; black-tipped, always present; soralia punctiform, never enlarging and never confluent, \pm stipitate, numerous, densely disposed, occurring on fiberclles; medulla compact to dense *U. amblyoclada*
10. Isidiomorphs thin, clustered, never black-tipped or absent; soralia initially punctiform then enlarging or fusing together (especially on terminal branches), \pm level with the cortex, occurring on the cortex *ad initio* or on fiberclles; medulla lax to dense 11
11. Fibrils short and spinulose, densely but \pm irregularly covering restricted parts (rarely the entire length) of branches; soralia punctiform, enlarging towards terminal branches, not confluent; galbinic acid always present *U. dasaea*

11. Fibrils usually longer and slender, scattered on whole thallus, not very densely covering branches or restricted parts of branches; soralia punctiform and confluent; galbinic acid absent *U. cornuta*

THE SPECIES

Usnea amblyoclada (Müll. Arg.) Zahlbr., Cat. Lich. Univ. 6: 534. 1930.

Usnea barbata var. *amblyoclada* Müll. Arg., Flora 72: 509. 1889. TYPE: ARGENTINA. Felsen am Fuss der Sierra Ventana, 1881, *Lorentz* (G!, holotype). CMA: 8.5/25.5/32 (thallus a), 7/16.5/53 (thallus b). Chemistry: usnic, salazinic and norstictic acids (both specimens; Clerc & Herrera–Campos 1997). = *Usnea pinnata* Räsänen, TYPE: ARGENTINA.

Circa Córdoba, 1280 m., 1935, Hosseus (H!, holotype), *syn. nov.*. CMA: 5.2/23.9/42 (thallus a), 7.3/17.8/49.8 (thallus b). Chemistry: usnic, salazinic, norstictic and protocetraric (faint) acids (thalli a & b).

Illustrations. Clerc and Herrera–Campos (1997), pp. 287 & 288; Brodo et al. (2001), p. 273.

For a detailed description of the species, see Clerc & Herrera–Campos (1997) and Clerc (2007) and for the distribution in Argentina see Rodriguez & Estrabou (2008).

Diagnosis. This species is characterized by the spinulose fibrils, the numerous fiberclles, the punctiform and never coalescing soralia and the thin and glossy cortex.

Chemistry. 1. Usnic, norstictic, salazinic, \pm protocetraric and \pm fumarprotocetraric acids (n = 23), K+ yellow turning red, medulla C–, Pd+ red or Pd–. 2. Usnic, norstictic, galbinic and salazinic acids (n = 5), medulla K+ yellow turning red, C–, Pd+ pale orange-yellow.

Variation. The specimens collected in Argentina present the same morphological variation as described by Clerc & Herrera–Campos (1997) for North American specimens.

Taxonomical notes. In Argentina, the main chemotype contains salazinic and norstictic acids (galbinic acid was found in only 15% of the specimens studied; **Table 3**), whereas galbinic acid is found in 96% of the specimens studied in North America (Clerc & Herrera–Campos 1997). Walker (1985) reported similar results in her study of South American specimens. Except for the presence of

soralia and isidiomorphs and the absence of apothecia, *Usnea amblyoclada* is similar in morphology, anatomy and chemistry with *U. densirostra*. However, the later never produces galbinic acid. *Usnea densirostra* is probably the fertile counterpart of *U. amblyoclada*. *Usnea pinnata* is morphologically, anatomically and chemically identical with *U. amblyoclada*.

Ecology and distribution. *Usnea amblyoclada* is the most common primarily saxicolous species in Argentina. It is confined to mountain chains in central and Northern Argentina exhibiting a wide ecological and altitudinal range (100–3000 m). This species is very common in the central mountains (Sierra Chaco and Pre-Andes) where *Usnea densirostra* is very rare. In the eastern mountains and in Uruguay, *U. densirostra* is more frequent than *U. amblyoclada*. Walker (1985) suggested that *U. amblyoclada* is confined to the northern part of South America. Our results show that this species is present in every mountain chain of Argentina and Uruguay, except in Patagonia.

Representative specimens examined. ARGENTINA. BUENOS AIRES: Dpto. Tandil, Tandil, 37°20'26.7"S, 59°11'22.7"W, 337 m, *Rodríguez & Fantini 0167* (LIL); Dpto. Tornquist, Sierra de la Ventana, S38°04'37.5", W62°00'06.5", 521 m, *Rodríguez & Fantini 161* (LIL). CATAMARCA: Dpto. Ambato, Vuelta de Ambato, 28°03'59.6"S, 65°54'22.0"W, 1646 m, *Rodríguez & Fantini 224* (LIL). CORDOBA: Dpto. Calamuchita, Camino de los Linderos, S32°04'06.2"S, 64°52'29.9"W, 1748 m, *Rodríguez 1802* (LIL). Dpto. Punilla, Capilla del Monte, *Nicora 2738* (SI). LA RIOJA: Dpto. Capital, *Pellici 22327* (CORD); Dpto. Famatina, Sierra de Famatina, Mina San Juan, *Kurtz 14087* (CORD); Ruta Nacional 78, Cuesta La Agüadita, 28°44'30.1"S, 67°35'40.6"W, 2059 m, *Rodríguez & Fantini 221* (LIL); Dpto. Castro Barros, Anillaco, 28°47'56.7"S, 66°59'49.6"W, 1735 m, *Rodríguez & Fantini 232* (LIL). MISIONES: Dpto. San Ignacio, Campos del Teyú Cuaré, *Ferraro et al. 79573* (CTES). SALTA: Dpto. Santa Victoria, Parque Nacional Baritú, margen del río Lipeo, *Ferraro 8744* (CTES). SAN JUAN: Dpto. Valle Fértil, Ischigualasto, C° el Morado, *Américo Cortez 244785* (CTES). SAN LUIS: Dpto. Junín, Merlo, 32°19'32.1"S, 64°58'52.5"W, 1110 m,

Rodríguez 062 (LIL); Dpto. General Pedernera, San José del Morro, 33°08'69.1"S, 65°23'33.5"W, 1365 m, *Rodríguez 1002* (LIL). TUCUMAN: Dpto. Tafí del Valle, El Infiernillo, 1900 m, *Grundlehner 51.28.3* (G). URUGUAY. MALDONADO: Cerro del Toro, Cumbre, 34°51'45.1"S, 55°15'26.8"W, 246 m, *Rodríguez 971*. LAVALLEJA: Camino a Salto del Penitente, 6 km de RN 8, 34°22'52.1"S, 55°04'34.9", 345 m, *Rodríguez 969* (MVM).

Usnea densirostra Taylor, Hook. London J. Bot., 6: 192. 1847. **Fig. 2**

Usnea barbata (L.) var. *densirostra* (Taylor) Müll. Arg., Flora 64: 83. 1981. TYPE. URUGUAY. Montevideo, *Darwin* (ASU!, isotype), (G!, isotype) CMA: 7/18/48; Chemistry: usnic, norstictic and salazinic acids.

Description. Thallus shrubby, compact, very rigid, up to 6 cm long (**Fig. 2A**), with both isotomic–dichotomous and anisotomic–dichotomous ramifications; trunk inconspicuous to 9 mm long (see remark in the “Morphology/basal part” chapter), reddish brown or concolorous with main branches, with annular cracks (**Fig. 2C**); branches irregular to tapering, sometimes slightly attenuated toward their basal part, with lateral branches not narrowed at point of attachment; terminal branches thick, usually with black tips; segments cylindrical and terete to ridged, with cortex irregularly cracked and displaying a rough surface; fibrils spinulose (**Fig. 2B**), short and thick (1.5–2.5 mm) always present and regularly distributed on whole thallus, usually with black tips; fiberclcs few; tubercles and papillae absent; pseudocyphellae and maculae absent on main branches (but sometimes present on fibrils); soralia and isidiomorphs absent; cortex mat to slightly glossy and cracked; thin (3.6–) 4.7–6.5%–8.3 (–10.7) (**Fig. 2D**); medulla compact, white, ± thin (8.6–) 10.9–15.5%–20.1 (–28.0) (**Fig. 2D**); axis thick (27.0–) 45.1–55.9%–66.8 (–69.0) (n = 25) (**Fig. 2D**), usually fistulose in main branches close to the base and irregular in longitudinal section, often brownish pigmented.

Apothecia always present (**Fig. 2A**), terminal or subterminal to lateral, up to 15 mm in diameter, becoming flat when mature; disc yellowish, with or without pruina, with fibrils both on the margin and

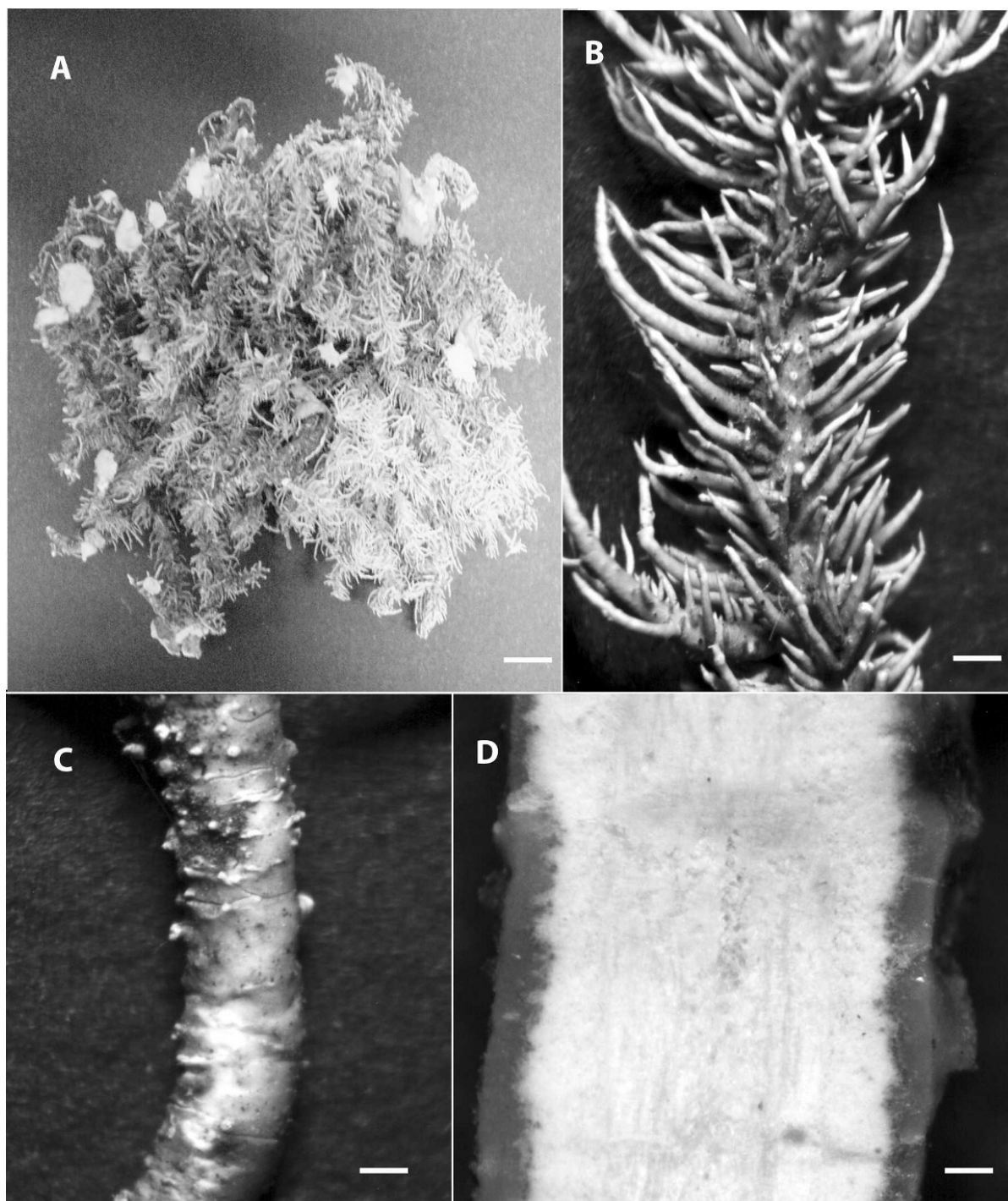


Figure 2. *Usnea densirostra*. A. Thallus (Rodríguez & Fantini 168). B. Terminal branch with spinulose fibrils (Rodríguez & Fantini 168). C. Trunk (Rodríguez & Fantini 168). D. Cortex, medulla, and axis (Rodríguez & Fantini 168). Scale. A = 10 mm. B = 1 mm. C = 0.67 mm & D = 0.25 mm.

on the underside; spores simple and hyaline, (6.4–) 7.0–7.8–8.6 (–11.2) \times (3.2–) 3.8–4.6–5.4 (–7.5) μm (n = 64) (**Table 1**); pycnidia present on fibrils and terminal branches; conidia sublageliform, 7.3 μm long in average (n = 23).

Chemistry. 1. Usnic, norstictic, salazinic, \pm protocetraric and \pm fumarprotocetraric acids (n = 11), medulla K+ yellow turning red, C–, Pd+ red or Pd–. 2. Usnic and salazinic acids (n = 3), medulla K+ yellow to orange, C–, Pd–.

Variation. The characters that show the largest variability are the frequency of apothecia, the density of fibrils and fiberclcs and the morphology of the axis.

Diagnosis. The diagnostic characters are: the simple, not proliferating base, the spinulous and dense fibrils, the absence of maculae or pseudocyphellae, the well delimited trunk and the presence of salazinic acid as main substance in the medulla.

Taxonomical notes. Walker (1985) suggested that *Usnea hieronymi* Kremp. could be the fertile counterpart of *U. amblyoclada* and be conspecific with *U. densirostra*. However, *U. hieronymii* has tubercles, pseudocyphellae and a black base with a proliferating holdfast. Moreover the medulla of *U. hieronymii* is slightly thinner and without salazinic acid.

Ecology and distribution. *Usnea densirostra* grows exclusively on rocks. It is the commonest saxicolous species in the Ventania and Tandilia hills as well as in the mountains of Uruguay where the climate is warm and sub-tropical. This species colonizes rock outcrops apparently without any specific preference. It is commonly found together with *Usnea fastuosa* in humid sites. On the other hand, it occupies exposed and dry rocks together with *U. amblyoclada*. *Usnea densirostra* is very rare in other regions, for example in the Córdoba and Neuquén provinces where it was cited by Motyka (1936–1938) and Lamb (1958). So far, this species has been recorded in South America from Argentina, Brazil, México, Paraguay, Peru and Uruguay (Motyka 1936–1938; Osorio 1987, 1997).

Representative specimens examined. ARGENTINA. BUENOS AIRES: Dpto. Tandil, Tandil, 37°20'26.7"S, 59°11'22.7"W, 337 m, *Rodriguez. & Fantini 168* (LIL). Dpto. Tornquist, Sierra de la Ventana, 38°04'37.5"S, 62°00'06.5"W, 521 m, *Rodriguez. & Fantini 163* (LIL). CORDOBA: Dpto. Calamuchita, Athos Pampa, *Estrabou 1830* (herb. Estrabou). NEUQUEN: Nahuel Huapi, *Edith Hein 00058* (LIL). URUGUAY. LAVALLEJA: 6 km Ruta Nacional 8 hacia el Salto del Penitente 34° 22' 52.1"S, 55° 04' 34.9"W, *Rodriguez 968* (G).

Usnea durietzii Motyka, Lich. Gen. *Usnea* Stud. Monogr. Pars Syst. 2: 503. 1936–1938.

Neuropogon durietzii (Motyka) D. J. Galloway & Quilhot, Gayana 55 (2): 142. 1998. TYPE: CHILE. Insula Elisabetha, ad saxa erratica, 1882, *Lechler* (UPS!, holotype; G!, Isotype). CMA: 6/31/26. Chemistry: usnic, norstictic and salazinic acids.
= *Usnea caespitia* Motyka in Lich. Gen. *Usnea* Stud. Monogr. Pars Syst. 2: 500. 1936–1938. TYPE: BOLIVIA. Pelca–La Paz, Haumapampa, ad rupem graniticam, 3700 m., 1910, *Planz 118* (LBL! holotype), *syn. nov.*. CMA: 4.5/33.5/19. Chemistry: usnic and norstictic acids.

Description. Thallus erect, rigid, up to 4 cm (**Fig. 3A**), yellow to greyish green, usually with red dots especially visible in the basal part and sometimes in the whole thallus, mainly with anisotomic–dichotomous ramifications; trunk inconspicuous to up to 6 mm, often darker than main branches to black pigmented (**Fig. 3B**); branches ± irregular to fusiform; lateral branches distinctly to ± narrowed at point of attachment; terminal branches sometimes with black tips; segments cylindrical and terete to strongly inflated; foveoles and transversal furrows absent; fibrils scarce to numerous, short (2–3 mm), spinulous, irregularly distributed; fiberclcs absent; tubercles absent; papillae hemispherical to verrucose, often inconspicuous but always present; pseudocyphellae and maculae absent; soralia arising from the cortex *ad initio*, on lateral branches, initially punctiform, often enlarging or fusing together in irregular patches, always remaining plane, slightly capitate or excavated only when fully developed (**Fig. 3C**), isidiomorphs always present, often abundant and very crowded, usually with black tips (**Fig. 3C**); cortex glossy and ± thin (4.2–) 5.5–7.2%–8.9 (–10.8); medulla lax to dense, moderately thick, (18.2–) 22.2–25.9%–29.6 (–33.9); axis ± thin (19.0–) 27.3–33.6%–37.3 (–44.0) (n = 44) (**Fig. 3D**).

Apothecia very rare, lateral, up to 7 mm of diameter, with marginal fibrils, disk yellow slightly pruinose; pycnidia not seen.

Chemistry. 1. Usnic and norstictic acids (n = 16), K+ red, C–, Pd+ yellow. 2. Usnic, norstictic and salazinic acids (n = 6), medulla K+ yellow turning red, C–, Pd+ yellow orange. 3. Usnic acid (n = 3); spot tests: K–, C–, Pd–.

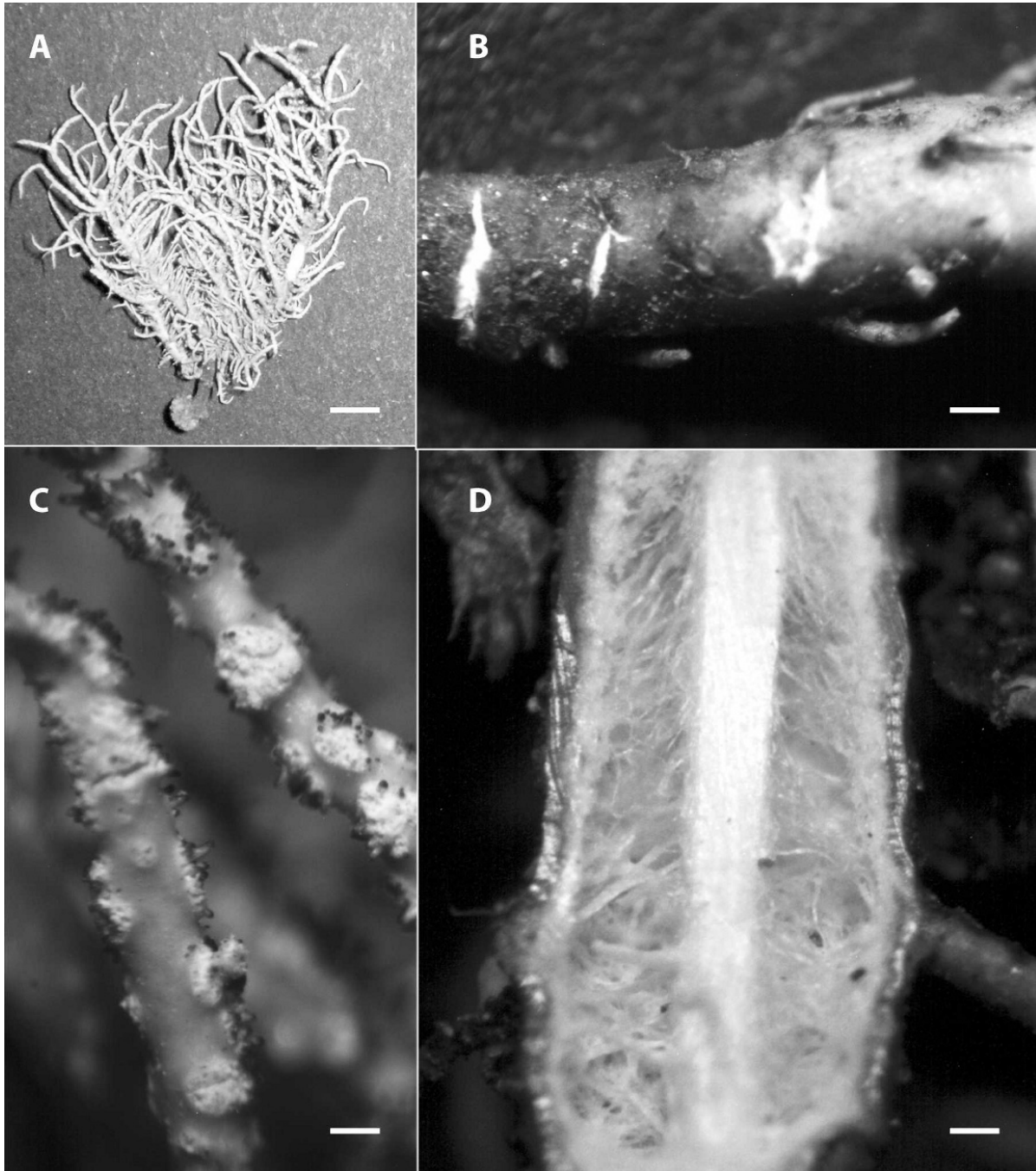


Figure 3. *Usnea durietzii*. A. Thallus (Rodríguez 789). B. Trunk (Rodríguez 789). C. Plane to slightly capitate soralia (Rodríguez 858). D. Cortex, medulla, and axis (Rodríguez 0055). Scale. A = 5 mm. B = 0.33 mm. C = 0.25 mm. D = 0.33 mm.

Variation. *Usnea durietzii* is a very polymorphic species, especially in the shape of branches and segments. Red dots are sometimes present on the whole thallus, being inconspicuous and only visible close to the base in other thalli. Lateral branches are usually constricted at the base, at least on the basal ramifications, but this character tends to be less distinctive in large (and older) thalli with very stiff

branches. Soralia are also variable (in relation to the age and developmental stage of thalli), being punctiform to enlarging to the diameter of the branch or fusing in irregular patches. They however always remain even with the cortex, being only slightly excavating or globose when fully developed.

Diagnosis. *Usnea durietzii* is characterized by the irregular and inflated branches, usually constricted at

the base and the conspicuous red dots visible at least close to the base; the typical soralia remaining plane even when enlarging and by its anatomy characterized by a thin and glossy cortex, a lax medulla and a thin axis.

Taxonomic notes. Walker (1985) considered this taxon to belong to the subgenus *Neuropogon* based on the black pigmentation present on the isidiomorphs and sometimes at the tips of lateral branches. Nevertheless this character is quite variable and seems to be correlated with the saxicolous habitat. Phylogenetic studies showed that *Usnea durietzii* has unresolved relationships with the *Neuropogon* group (Wirtz et al. 2006). The black pigmentation is never present as distinct bands on the cortex of branches as in the other *Neuropogon* species. Specimens with apothecia have a yellow disk whereas the *Neuropogon* species have a black or reddish brown disk (Walker 1985). For these reasons we consider *U. durietzii* to belong to sub. *Usnea* and not to *Neuropogon* gr. *Usnea caespitia* Motyka was separated from *U. durietzii* based on the density of branches (Motyka 1936–1938) and on the K reaction (reddish in *U. caespitia*). However, the soralia morphology, the red pigmentation, the branches morphology and the chemistry fit perfectly in the variation of *U. durietzii*. The distribution range is also similar. We selected the name *U. durietzii* instead of *U. caespitia* because it is best known and has been more cited in the literature.

In Argentina, above 2500 m, *Usnea durietzii* exhibits compact forms, with more irregular branches and extensive black pigmentation that could lead to a misidentification with *U. saxidilatata*. However, the base without proliferating holdfast, the presence of red dots, the lax medulla and the absence of pseudocyphellae distinguish the former species from the latter. In addition, in *U. saxidilatata*, the soralia never enlarge like those in *U. durietzii*.

Ecology and distribution. *Usnea durietzii* is primarily saxicolous and grows very rarely on shrubs. It is very frequent in high mountains where the rocks outcrops are common and the climate is temperate to cold. In the Sierra Chaco above 2000 m, this species is found together with *U. saxidilatata*, where it replaces *U. amblyoclada* in abundance.

Usnea durietzii has been recorded from the whole Andean Cordillera: Argentina, Bolivia, Chile, Colombia, Ecuador, Panamá and Venezuela (Walker 1985). In Argentina it is distributed in the Central and North Andes and in the highest part of the Sierra Chaco (above 1700 m). Motyka (1936–1938) recorded it in Patagonia. Räsänen (1941) mentioned *U. durietzii* from the Mendoza province; this material was, however, a mixture of *U. durietzii* and *U. saxidilatata*.

Representative specimens examined. ARGENTINA. CORDOBA: Dpto. Calamuchita, Camino de los Linderos, 32°04'06.2"S, 64°52'29.9"W, 1748 m, *Rodríguez 411* (LIL). Dpto. Punilla, Camino de las Altas Cumbres, *Rodríguez 426* (LIL). Dpto. Cruz del Eje, Río Yuspe, *Rodríguez 1780* (LIL). MENDOZA: Dpto. Lujan de Cuyo, Cordón del Plata, Camino a Vallecitos, 32° 59' 45,6"S, 69° 20' 22.2"W, 2399 m, *Rodríguez 0057* (G). Dpto. Las Heras, Quebrada del Cajón de Minas, 1800–2000 m, *Ruiz Leal 5858* (MERL). SAN LUIS: Dpto. Junín, Merlo, 32° 19' 32.1"S, 64° 38' 52.5"W, 1100 m, *Rodríguez 0063* (LIL). TUCUMAN: Dpto. Tafí del Valle, El Infiernillo, 2870 m, *Grundlehner 10.28.3* (G).

Usnea exigua J.M. Rodr. & P. Clerc sp. nov.

Mycobank number: MB 519178 **Fig. 4**
Fungi saxicola. Thallus 3 cm altus, erectus. Basis dilata. Rami principales porcati at irregularis. Soralia absens. Cortex tenuis (6.1%). Medulla moderate tenuis (21.4%). Axis moderate crassus (44.9%). Apothecia communis, sporae 7.1 × 4.7 µm. Acidum usnicum, acidum protocetraricum et substantia ignota (TLC A:6/B:2/C:5) continens.

TYPE: ARGENTINA. BUENOS AIRES: Sierra de la Ventana, Cerro Bahía Blanca, *Adler 35612* (CTES, holotype, G, H, isotypes).CMA: 7/25/36. Chemistry: usnic, protocetraric and unknown I acids.

Description. Thallus short, up to 3 cm, erect, rigid, poorly ramified (**Fig. 4A**), mainly with anisotomic dichotomous ramifications; trunk with proliferating holdfast (**Fig. 4A**), concolorous to slightly brownish, attenuated towards the base; branches ± fusiform to irregular; lateral branches few, often very short, fibril-like, not narrowed at point of attachment; segments inconspicuous, cylindrical and terete to ridged; fibrils absent or few (probably lateral branches in a initial stage of development); fiberclcs absent; tubercles short,

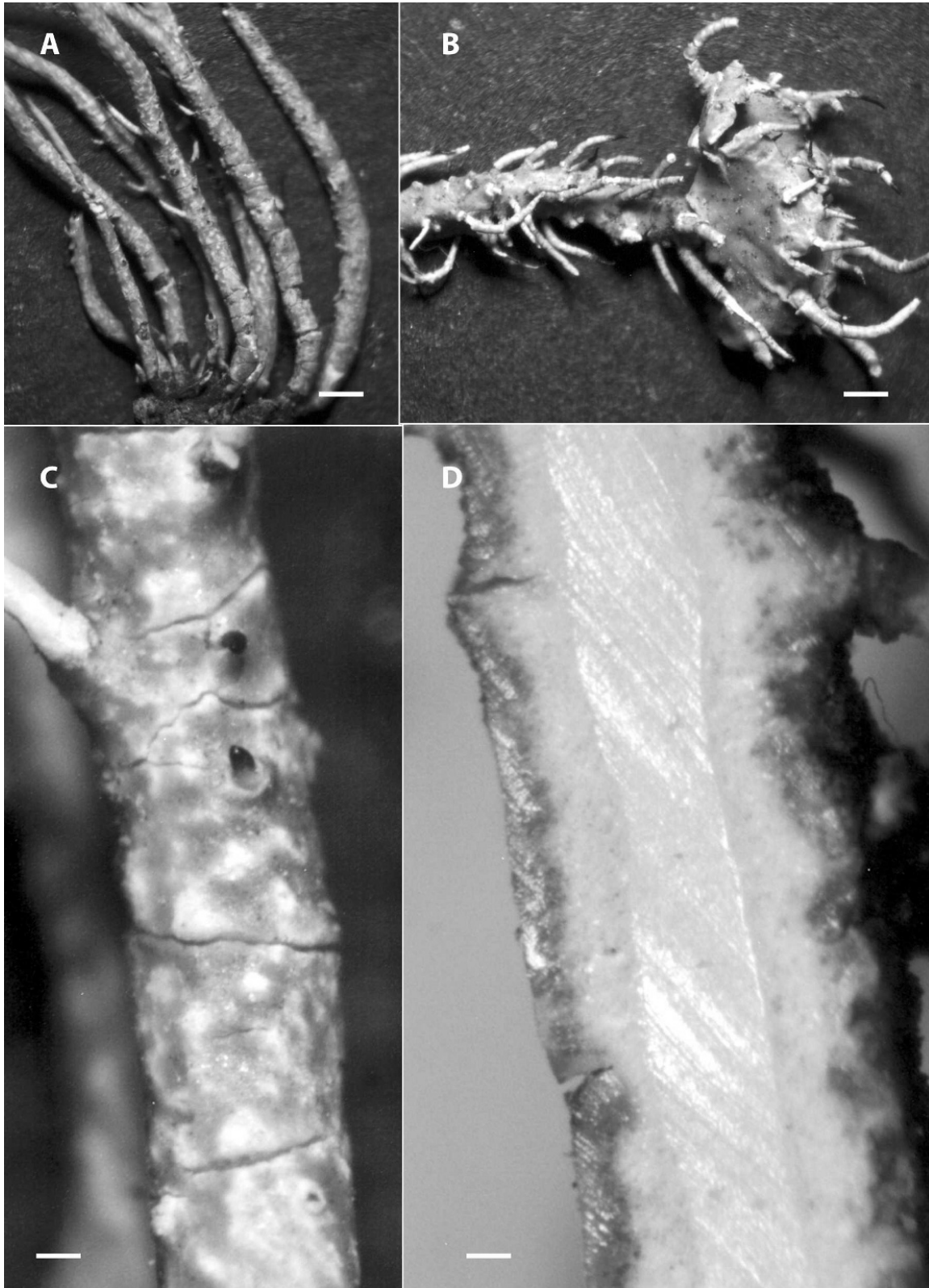


Figure 4. *Usnea exigua*. **A.** Thallus with proliferating holdfast (holotype). **B.** Terminal branches with terminal apothecia (holotype). **C.** Terminal branch with irregular maculae (holotype). **D.** Cortex, medulla, and axis (Ruiz BAFC). Scale. A & B = 1 mm. C & D = 0.33 mm.

eroded at their summit, irregularly distributed but sometimes very frequent on some branches, when absent then maculae numerous; papillae absent; pseudocyphellae absent; maculae irregular to elongated, irregularly distributed, when absent then tubercles numerous (**Fig. 4C**); transversal furrows small and rare; soralia and isidiomorphs absent; cortex mat, with conspicuous reticulations on main branches, thin (4.0–) 4.8–6.1%–7.4 (–8.5); medulla compact to dense, \pm thin (12.5–) 17.1–21.4%–25.7 (–28.5); axis solid, moderately thick (34.0–) 36.6–44.9%–53.2 (–61.3) (n = 15) (**Fig. 4D**).

Apothecia usually present, few to numerous, mainly serial, sometimes subterminal or terminal (**Fig. 4B**), with few marginal fibrils, disk slightly pruinose; spores simple and hyaline, (5.6–) 6.3–7.1–7.9 (–8.8) \times (3.2–) 3.9–4.7–5.5 (–6.4) μm (n = 39) (**Table 1**); pycnidia and conidia not seen.

Chemistry. Usnic, protocetraric acids and unknown I (n = 5), medulla K+ yellowish brown to K–, C–, Pd+ red.

Variation. The morphology of the branches varies from being fusiform to irregular. The study of more specimens is however needed to have a better idea of the variation of this taxon.

Diagnosis. This species can be recognized by its poorly ramified and short thallus with a proliferating holdfast, its branches that are \pm fusiform and protocetraric acid as main substance.

Taxonomic notes. Young thalli of *Usnea hieronymii* that are not well developed can resemble *U. exigua*, however, the former species has a black base, cylindrical to irregular branches, and a thin medulla (8.5–11.1%–13.7). The spores of *U. exigua* are smaller. *Usnea exigua* differs from *U. fastuosa* in branches morphology, trunk pigmentation and in the thickness and colour of the medulla.

Ecology and distribution. *Usnea exigua* grows on exposed and dry rocks outcrops. It shares its habitat with *U. amblyoclada* and *U. densirostra*. This species has been collected in the eastern mountains of Argentina and Uruguay.

Additional specimens examined. ARGENTINA. BUENOS AIRES: Dpto. Tandil, Sierra del Tigre, XI–1989, Ruiz (BAFC). URUGUAY. LAVALLEJA: 6 km Ruta Nacional 8 hacia el Salto del Penitente, 34° 22' 52.1"S, 55° 04' 34.9"W, 345 m, Rodríguez 967 (G).

Maldonado: Cerro del Toro. Cumbre, 34° 51' 45.1"S, 55° 15' 26.8"O, 246 m, Rodríguez 965 (G). Sierra de las Animas, Osorio 6927 (MVM).

Usnea fastuosa (Müll. Arg.) Zahlbr., Cat. Lich. Univ. 6: 564. 1930 **Fig. 5**
Usnea barbata var. *fastuosa* Müll. Arg., Flora 72: 509. 1889. TYPE: ARGENTINA. BUENOS AIRES: Punta de Pigue [Pigüe], 1881, Lorentz (G! holotype). CMA: 12/12/52 (thallus a), 10.5/14.5/50 (thallus b). Chemistry: usnic, norstictic, connorstictic, salazinic (faint) acids (thalli a & b).

Description. Thallus shrubby to subpendulous, up to 7 cm, very rigid, green greyish in the field, moderately ramified, mainly with anisotomic–dichotomous ramifications; trunk with proliferating holdfast (**Fig. 5A**), brownish to black, black pigmentation sometimes extending to main branches with conspicuous annular or reticular cracks; branches irregular to cylindrical; lateral branches not narrowed at point of attachment; segments cylindrical, terete to slightly ridged; fibrils absent or present (young branches?), up to 5 mm; tubercles present, sometimes scarce, irregularly distributed, frequent on terminal branches under the apothecia (**Fig. 5B**); papillae absent; pseudochyphellae absent; maculae always present, mainly on secondary and terminal branches, punctiform, elongated and/or irregular, sometimes fusing together (**Fig. 5C**), often developing into pseudocyphellae on terminal branches; foveoles absent; soralia and isidiomorphs absent; cortex conspicuously cracked, mat to slightly glossy, \pm thick (6.0–) 6.7–8.0%–9.3 (–11.0); medulla compact, often orange pigmented and extremely thin (4.9–) 6.5–9.1%–11.7 (–14.7); axis sometimes fistulous on main branches, very thick (56.0–) 60.1–65.7%–71.3 (–74.1) (n = 18) (**Fig. 5D**).

Apothecia always present, mainly lateral, with few marginal fibrils (**Fig. 5B**), disc not pruinose, spores simple and hyaline, (6.4–) 6.8–7.9–9.0 (–10.4) \times (3.2–) 4.0–5.0–6.0 (–7.2) μm (n = 63) (**Table 1**), pycnidia and conidia not seen.

Chemistry. 1. Salazinic, norstictic acids, unknown II and III (n = 16), medulla K+ yellow turning red, C–, Pd+ yellow orange. 2. Protocetraric, fumarprotocetraric acids, unknown II and III (n = 11), medulla K+ yellow brownish to K–, C–, Pd+ red.



Figure 5. *Usnea fastuosa*. **A.** Trunk with proliferating holdfast (Rodríguez 166). **B.** Terminal branches with tubercles (arrow) and apothecia (Rodríguez 166). **C.** Irregular maculae (Rodríguez 166). **D.** Cortex, medulla, and axis (Osorio 7332). Scale. A & B = 1 mm. C = 0.25 mm. D = 0.33 mm.

Variation. The density of ramifications and tubercles are the most variable characters in this species. Morphology and distribution of the maculae are also variable. Chemotype 1 is more frequent in Eastern Argentina whereas chemotype 2 is more frequent in Uruguay. Specimens with chemotype II tend to have fewer tubercles in the terminal branches under the apothecia, fewer fibrils and branches that are more cylindrical. However, these characters are

very variable in *Usnea* and also among specimens of the same species.

Diagnosis. The diagnostic features of this species are the extremely thin and orange pigmented medulla, the large axis, the cylindrical branches, the presence of maculae and the unknown substances II and III in the medulla.

Taxonomic notes. *Usnea fastuosa* resembles *U. amaliae*. However, the latter lacks the black base, the

tubercles, the fibrils and the orange medulla. The ramification in *U. amaliae* is isotomic–dichotomous, the medullar substances are psoromic and consporomic acids, the cortex is thicker and the distribution range corresponds to the tropical Andes in Bolivia. For differences with *U. densirostra* and *U. hieronymii* see under these species.

Ecology and distribution. *Usnea fastuosa* grows strictly on rocks in humid areas and is locally abundant in its distribution range. It is commonly found sharing the rocks surface with others saxicolous species like *U. densirostra* or *U. exigua*. In Argentina, the distribution corresponds with the Ventania and Tandilia mountains from the East of the Buenos Aires province. This species is also present in Uruguay.

Representative specimens examined. ARGENTINA. BUENOS AIRES: Dpto. Tandil, Tandil, 37°20'26.7"S, 59°11'22.7"O, 337 m, *Rodríguez & Fantini 168* (LIL). Dpto. Tornquist, Sierra de la Ventana, 38°04'37.5"S, 62°00'06.5", 521 m, *Rodríguez & Fantini 166* (LIL). URUGUAY. MALDONADO: Pan de Azúcar, 300 m, *Verter 122005* (G). Sierra de las Animas, *Osorio 122004* (G).

Usnea hieronymii Kremp. Flora 61: 436. 1878.

Fig. 6

TYPE: ARGENTINA. prope. Oran, Sierra Tucreman (Tucumán), ad saxa, *Lorentz & Hieronymus* (M! lectotype designated here; G! isotype). CMA: 4.5/33.5/19. Chemistry: usnic and norstictic acids.

= *Usnea hieronymii* var. *adusta* Kremp. Flora 61: 436. 1878. TYPE: ARGENTINA, prope. Oran, Sierra Tucreman (Tucumán), ad saxa, 7–8000, *Lorentz & Hieronymus* (M! lectotype designated here). *syn. nov.*

Description. Thallus shrubby, erect, up to 7 cm long, very rigid (**Fig. 6A**), with anisotomic–dichotomous ramifications; trunk with a proliferating holdfast and with black pigmentation sometimes extending above the first ramification, with cracks in a reticular pattern; branches cylindrical to ± irregular, lateral branches not narrowed at point of attachment; segments cylindrical and terete to ridged; fibrils scarce to abundant, 2–4 mm long; fiberclles common mainly in the basal part of the thallus; tubercles numerous, sometimes eroded at the top (**Fig. 6C**); papillae absent; pseudocyphellae

absent or present, if present very conspicuous, elongated, twisted and sometimes slightly stipitate on the top of ridges (**Fig. 6B**), distributed on the whole thallus; maculae absent, terminal branches thick with few ramifications and tips black pigmented; foveoles sometimes present; soralia and isidiomorphs absent; cortex glossy, ± thin (4.3–) 5.1–7.3%–9.4 (–11.0); medulla compact and thin (7.2–) 8.5–11.1%–13.7 (–15.7); axis very thick (48.9–) 55.1–63.0%–70.9 (–73.8) (n = 14) (**Fig. 6D**).

Apothecia scarce, mostly terminal and subterminal, sometimes serial with long marginal fibrils, 4–5 mm in diameter, disk ± pruinose; spores simple and hyaline, (6.4–) 7.6–8.4–9.2 (–10.4) × (4.0–) 4.6–5.4–6.2 (–7.2) μm (n = 89) (**Table 1**); pycnidia not seen.

Chemistry. 1. Usnic, norstictic, ± protocetraric, ± diffractaic acids (n = 17); medulla K+ yellow turning red, C– or C+ yellow, KC– or KC+ yellow, Pd+ yellow to reddish. 2. Usnic and protocetraric acids (n = 2); medulla K+ yellow or K–, C–, Pd+ red. 3. Usnic and diffractaic acids (n = 1); medulla K–, C+ yellow, KC+ yellow, Pd–.

Variation. In the type collection, all “individuals” have been meticulously separated from each other so that the colonial growth with proliferating holdfast cannot be recognized anymore. However, in the field, the growth from a proliferating holdfast is a typical character of this species. The presence of pseudocyphellae and the density of tubercles are variable, the tubercles being eroded or not. The frequency and position of apothecia are variable as well as the black pigmentation of the base. The three chemotypes lack any diagnostic morphological or anatomical differentiation.

Diagnosis. *Usnea hieronymii* is characterized by proliferating holdfast, the black base, the thin, compact and white medulla and the presence of numerous tubercles.

Taxonomic notes. *Usnea hieronymii* resembles *U. fastuosa* based on the basal part morphology, the thin cortex and the length of spores. The latter species has an orange and extremely thin medulla (6.5–9.1% –11.7), maculae instead of pseudocyphellae (in terminal branches maculae may develop into pseudocyphellae) and unknown substances II and III in the medulla. For differences

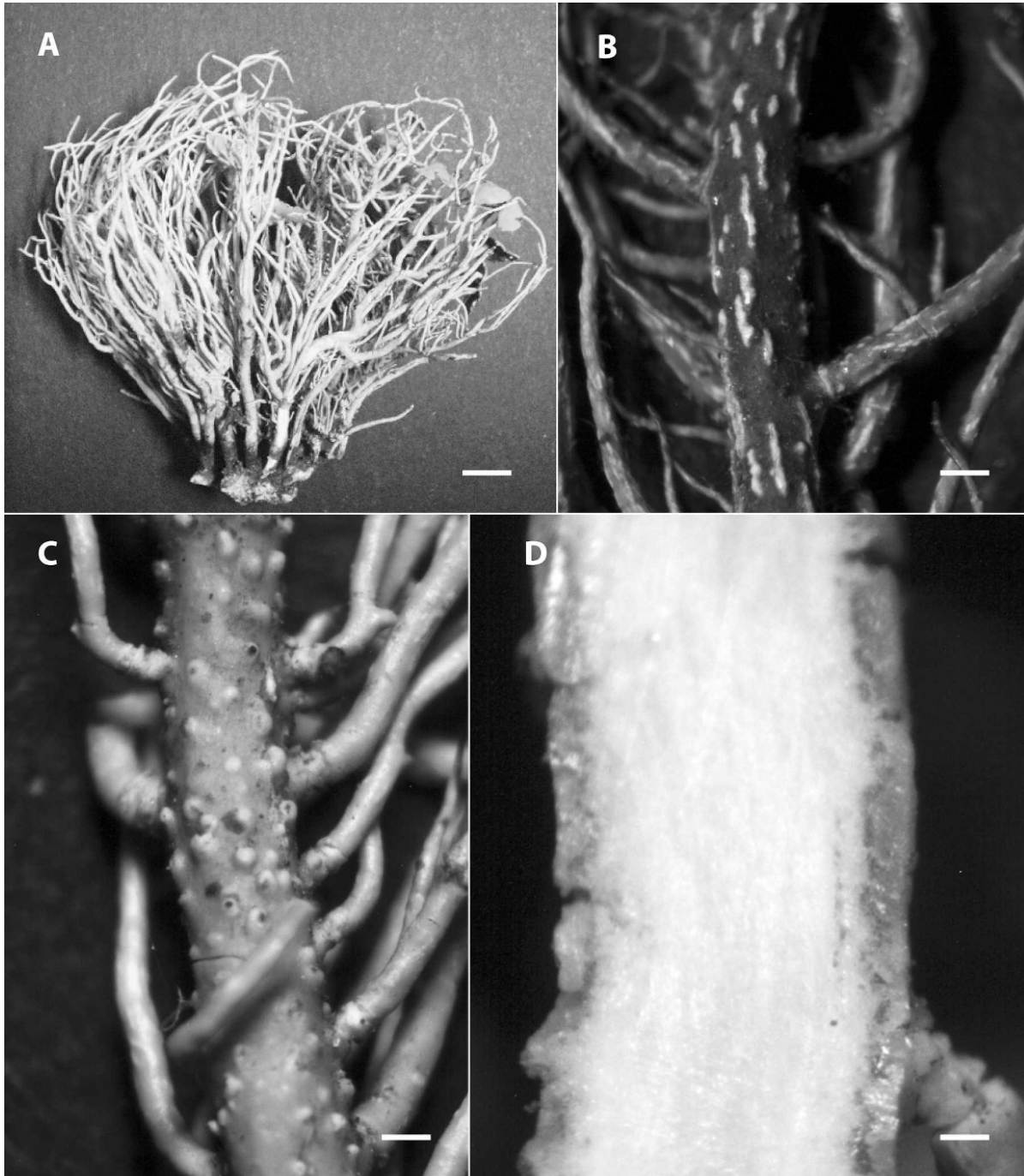


Figure 6. *Usnea hieronymii*. **A.** Thallus with proliferating holdfast (Rodríguez 887). **B.** Terminal branch with elongated pseudocyphellae (holotype). **C.** Terminal branch with tubercles (Rodríguez 887). **D.** Cortex, medulla, and axis (Rodríguez 918). Scale. A = 5 mm. B = 0.5 mm. C = 0.33 mm. D = 0.66 mm.

with *U. densirostra* and *U. exigua*, see under these species. The type material of *U. hieronymii* var. *adusta* is a group of specimens without any difference with *U. hieronymii* beyond the size of the thalli.

Ecology and distribution. This species is strictly saxicolous, present in the central

mountains of Argentina (Córdoba and Tucumán provinces), growing between 2000 and 3000 m. It has been reported from Argentina, Bolivia and Uruguay (Motyka, 1936–1938). However, the record from Uruguay corresponds to *Usnea fastuosa*.

Representative specimens examined. ARGENTINA.

CORDOBA: Dpto. Calamuchita, Camino de los Linderos, 2700 m, *Rodríguez 843* (LIL). Dpto. Punilla, Los Gigantes, *Rodríguez 887* (LIL). TUCUMAN: Dpto. Chichigasta, La Cascada de las Cuevas, 2800 m, *Meyer 13754* (LIL).

Usnea lutii J.M. Rodr. & P. Clerc sp. nov.

Mycobank number: MB 519179

Fig. 7

Fungi saxicola. Thallus 9 cm altus, erectus. Basis dilata, brunneolus niger ad distinctum nigrum. Rami principales teretes ad irregulares. Tubercula numerosae. Soralia isidiosa punctiformia. Cortex tenuis (6.1%). Medulla tenuis (12.8%). Axis crassus (62.3%). Apothecia rara. Acidum usnicum, acidum norsticticum et ± acidum protocetraricum continens.

TYPE: ARGENTINA. CORDOBA: Dpto. Calamuchita, Cerro Champaqui, 32° 01' 03.3"S, 64° 56' 18.8"W, 2640 m, 16 May 2009, *Rodríguez 980* (CTES, holotype, G, H, isotypes). CMA: 5.5/9.1/70.8. Chemistry: usnic and norstictic acids.

Description. Thallus erect, rigid, up to 9 cm long (**Fig. 7A**), branching mainly anisotomic-dichotomous; trunk black to brownish, with proliferating holdfast (**Fig. 7B**), annular and reticulated cracks; branches cylindrical to irregular, lateral branches not narrowed at point of attachment; segments cylindrical and terete to ridged with ± conspicuous annular and reticulated cracks; fibrils scarce, up to 4 mm long, blackened at the tips; fiberclles few to numerous; tubercles numerous; papillae absent; pseudocyphellae irregular to elongated and ± twisted on lateral branches (**Fig. 7C**); maculae absent; transversal furrows and foveoles absent; soralia arising from the top of tubercles or on fiberclles, punctiform, even with cortex to slightly convex, smaller than half the diameter of the branch, partly or not confluent (**Fig. 7D**); isidiomorphs blackened at the tips (**Fig. 7D**); cortex glossy to mat, thin (3.5–) 4.6–6.1%–7.6 (–8.5), medulla compact, thin (6.0–) 9.2–12.8%–16.4 (–22.8); axis sometimes fistulose in main branches, very thick (37.4–) 54.5–62.3%–70.1 (–74.0) (n = 22) (**Fig. 7E**).

Apothecia very rare, lateral, up to 5 mm in diameter; disk yellow and slightly pruinose, with marginal fibrils.

Chemistry. Usnic, norstictic and ± protocetraric acids (n = 13); medulla K+ red, C–, Pd+ yellow to reddish.

Etymology. The specific epithet was chosen in honour of Professor Ricardo Luti from the University of Córdoba. He was one of the first researchers to study the vegetation and ecology of the mountain systems where *Usnea lutii* grows.

Variation. The morphology of the branches and segments is variable in this species. Also the pigmentation of the basal part can vary from black to brown.

Diagnosis. Among the characters that distinguish *Usnea lutii* from the other sorediate saxicolous species are the presence of tubercles and pseudocyphellae, the punctiform never enlarging soralia and the thin medulla.

Taxonomic notes. *Usnea lutii* is separated from *U. saxidilatata* based on the thickness of the medulla and axis, the conspicuous presence of tubercles and the absence of foveoles. Also the latter has soralia that are mainly confluent. The presence of pseudocyphellae, tubercles, proliferating holdfast and the blackish pigmentation of the basal part distinguish *U. lutii* from *U. amblyoclada*. *Usnea lutii* has morphological, anatomical and chemical similarities with *U. hieronymii*. These two species can be considered as forming a species-pair.

Ecology and distribution. This species is exclusively saxicolous. So far, it is known only from the Sierra Chaco mountains in central Argentina above 1700 m.

Additional specimens examined. ARGENTINA.

CORDOBA: Dpto. Calamuchita, Cerro Champaqui, 31° 59' 15.1"S, 64° 56' 12.2"W, 2795 m, *Rodríguez 983* (G). Cerro Champaqui, 31° 59' 24.7"S, 64° 56' 11.2"W, 2745 m, *Rodríguez 991* (G) Camino de los Linderos, 2700 m, *Rodríguez 890* (G), 914, 1782, 904, 937 (CORD) Dpto. Punilla, Los Gigantes 31° 25' 09.2"S, 64° 48' 34.2" W, 2290 m, *Rodríguez 785* (G), 909 (CORD). Camino Altas Cumbres, 1700 m, *Rodríguez 906* (CORD). Camino Altas Cumbres 2100 m, *Rodríguez 939* (CORD).

Usnea saxidilatata J.M. Rodr. & P. Clerc sp. nov.

Fig. 8

Mycobank number: MB 519180

Fungi saxicola. Thallus 6 cm altus, erectus. Basis dilata. Rami principales porcati at irregularis. Papillae et

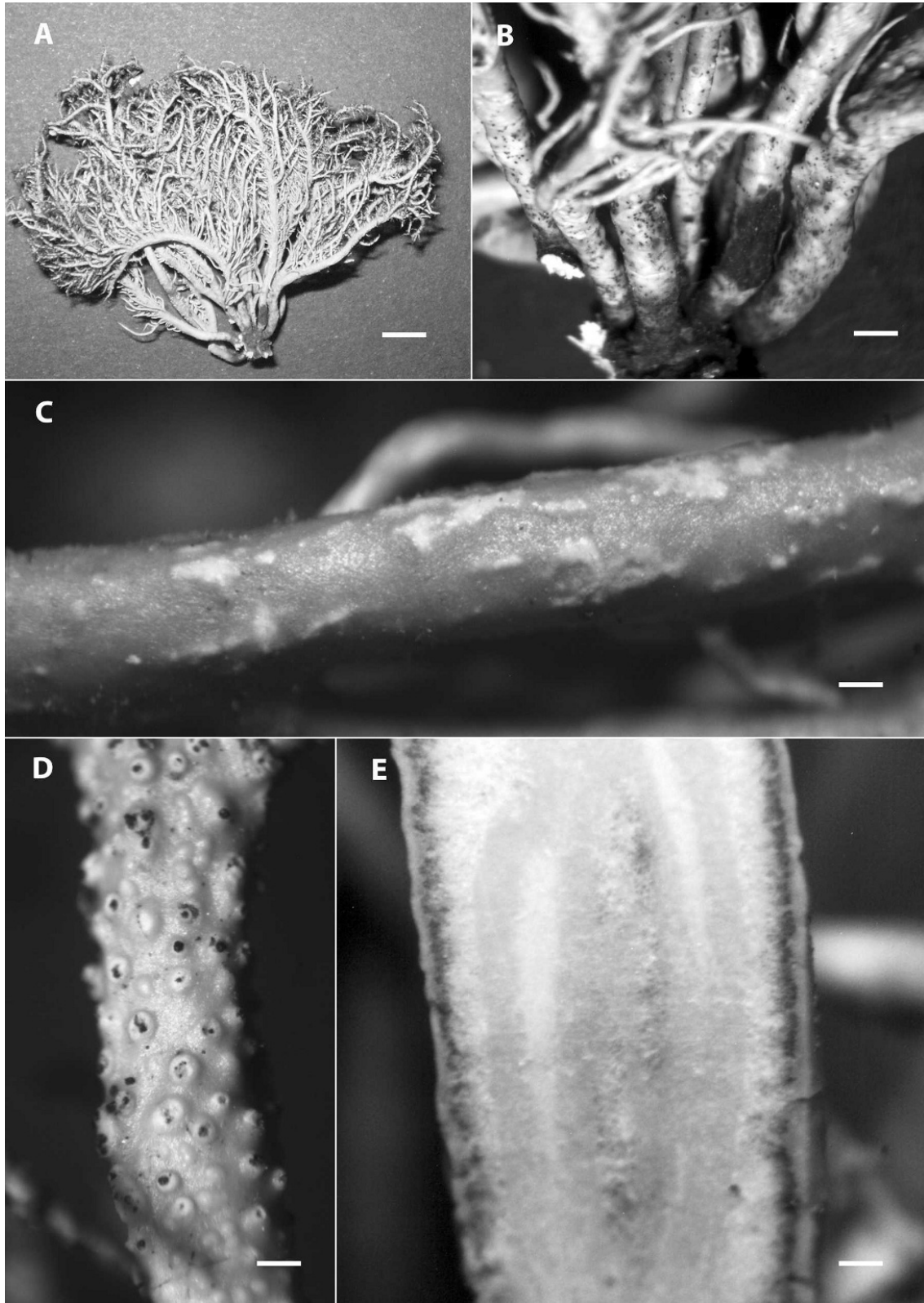


Figure 7. *Usnea lutii*. **A.** Thallus (*holotype*). **B.** Trunk with proliferating holdfast (*holotype*). **C.** Irregular pseudocyphellae (*Rodríguez 904*). **D.** Tubercles, soralia and isidiomorphs (*Rodríguez 904*). **E.** cortex, medulla, and axis (*Rodríguez 909*). Scale. A = 10 mm. B = 1 mm. C, D & E = 0.33 mm.

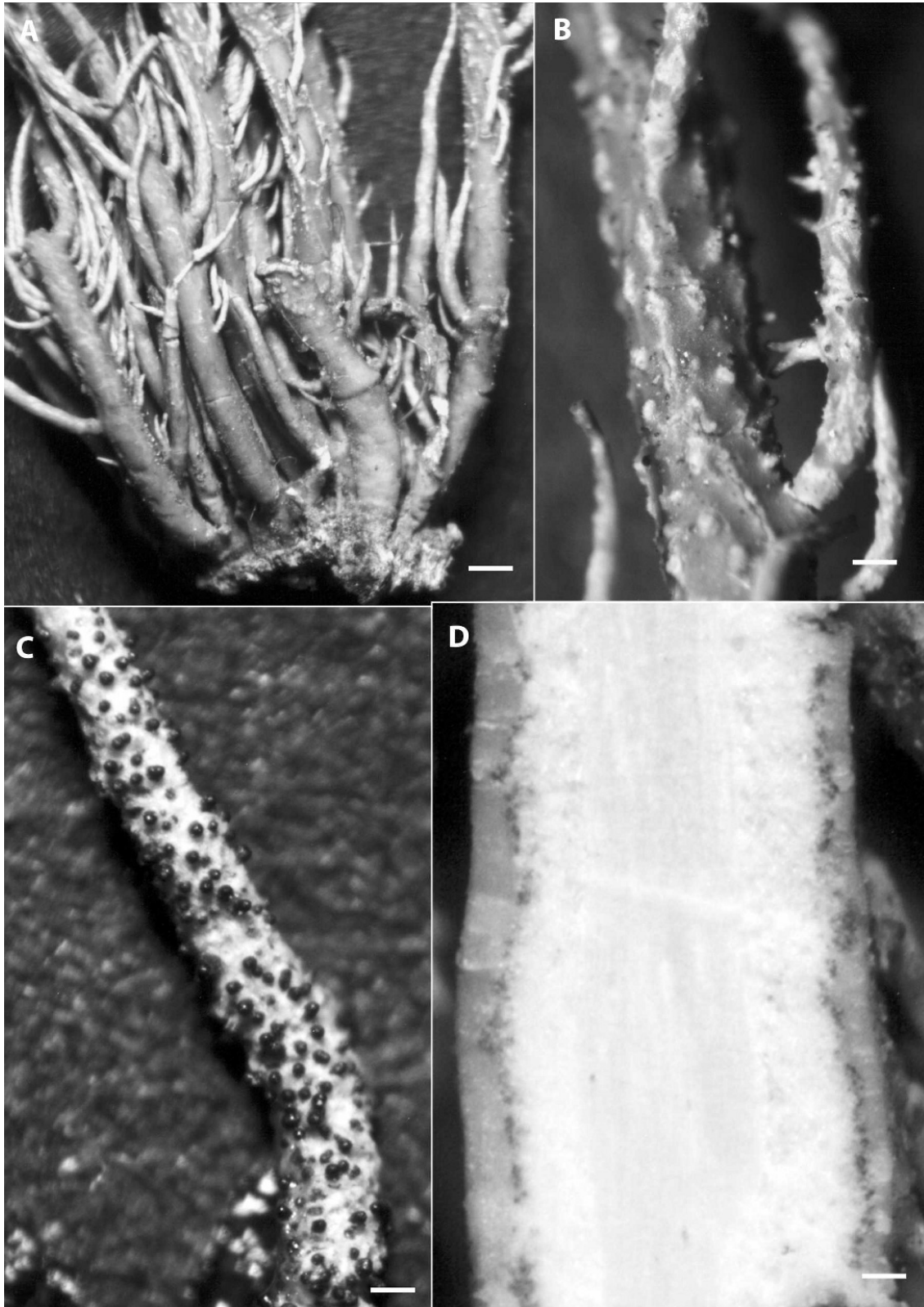


Figure 8. *Usnea saxidilatata*. **A.** thallus with proliferating holdfast and fibrils (*Grundlehner 13.28.3*). **B.** Punctiform and isolated soralia in early stage (*Grundlehner 13.28.3*). **C.** Soralia totally confluent with black isidiomorphs (*Grundlehner 13.28.3*). **D.** Cortex, medulla, and axis (*holotype*). Scale. A = 1 mm. B = 0.28 mm. C & D = 0.25 mm.

tubercula absens. Soralia isidiosa punctiformia. Cortex tenuis (5.5%). *Medulla moderate tenuis* (22.0%). *Axis moderate crassus* (47.5%). *Apothecia ignota. Acidum usnicum et acidum norsticticum continens.*

TYPE: ARGENTINA. MENDOZA: Dpto. Lujan de Cuyo, Cordón del Plata, Camino a Vallecitos, 32° 59' 45.6"S, 69° 20' 22.2"W, 2399 m, *Rodríguez 0056* (CTES, holotype, G, H, isotypes). CMA: 5.8/14.1/60. *Chemistry*: usnic and norstictic acids.

Description. Thallus short, up to 6 cm, erect, rigid (**Fig. 8A**), branching mainly anisotomic-dichotomous; trunk concolorous with main branches, slightly attenuated, with proliferating holdfast (**Fig. 8A**); branches \pm fusiform to irregular, lateral branches narrowed or not at point of attachment; sometimes numerous and crowded; segments conspicuous or not, cylindrical, terete to \pm ridged with \pm conspicuous annular and reticulated cracks; fibrils numerous and short, up to 2 mm long, \pm irregularly crowded; fiberclcs scarce to numerous; tubercles absent; papillae absent; pseudocypbellae irregular to elongated and \pm twisted on lateral branches (**Fig. 8B**), sometimes absent; maculae absent; transversal furrows and foveoles always present mainly in basal part; soralia mainly on terminal branches, arising from the cortex *ad initio* or on fiberclcs, punctiform (**Fig. 8B**), even with cortex to slightly convex, smaller than half of the branch, partially to totally confluent on terminal branches (**Fig. 8C**); isidiomorphs short and thick, blackened at the tips, giving a blackish colour to the branches when numerous (**Fig. 8C**); cortex mat, thin (2.5–) 4.2–5.5%–6.8 (–7.3); medulla compact to dense, \pm thin (8.6–) 14.8–20.7%–26.6 (–33.5); axis thick, (22.0–) 36.3–47.5%–58.7 (–68.9) (n = 19) (**Fig. 8D**).

Apothecia not seen.

Chemistry. Usnic and norstictic acids (n = 15), medulla K+ red, C–, Pd+ yellow.

Etymology. The specific epithet represents the saxicolous substrate and the characteristics of the basal part (trunk with proliferating holdfast that means “dilatata” in Latin).

Variation. Specimens from high elevations show more compact forms with more irregular branches and ridged segments. In these conditions, thalli are

more blackish and densely branched, especially in the terminal parts.

Diagnosis. Among the characters that distinguish *Usnea saxidilatata* from the other sorediate saxicolous species are the punctiform never enlarging and confluent soralia, the \pm thick and compact to dense medulla, the proliferating holdfast and norstictic acid as main medullar substance.

Taxonomic notes. Superficially *Usnea saxidilatata* resembles the compact forms of *U. amblyoclada* but the confluent soralia, the presence of pseudocypbellae and the morphology of the basal part readily separate the two species. For differences with *U. durietzii*, see under this species.

Ecology and distribution. This species is always saxicolous and share its habitat with *Usnea durietzii*. It has been collected in the Andes, Pre–Andes and Sierra Chaco mountains above 2000 m. More collections are needed to understand the whole distribution pattern of this species in South America. The ecological amplitude of this species is similar to the one of *U. durietzii*.

Additional specimens examined. ARGENTINA. CORDOBA: Dpto. Calamuchita, Cerro Champaqui, 31° 59' 15.1"S, 64° 56' 12.2"W, 2795 m, *Rodríguez 982* (G). Camino de los Linderos, Bifurcación, 32° 01' 05.8"S, 64° 55' 45.1"O, 2665 m, *Rodríguez 984, 893* (G). Dpto. Punilla, Los Gigantes, 2000 m, *Rodríguez 1003* (CTES). MENDOZA: Dpto. Lujan de Cuyo, Cordón del Plata, Vallecitos, 32° 58' 23.6"S, 69° 21' 30.5", 3006 m., *Rodríguez 0059* (LIL). Dpto. Las Heras, Quebrada del Cajón de Minas, 1800–2000 m, *Ruiz Leal 5858* (MERL). TUCUMAN: Dpto. Tafi del Valle, El Infiernillo km 479, 3050 m, *Grundlehner 13.28.3* (G). El Infiernillo km 487, 2800 m, *Grundlehner 24.28.3b* (G).

Secondarily saxicolous species.

Some species like *Usnea columbiana*, *U. cornuta*, *U. dasaea*, and *U. cf. perhispidella* can be found occasionally on rocks. They are primarily corticolous and common in Argentina. They will be treated in more details in further contributions.

Excluded taxa

Usnea amaliae Motyka, Lich. Gen. *Usnea* Stud. Monogr. Pars Syst. 2: 634. 1936–1938. TYPE: BOLIVIA. In Monte Grande Chiquitos, 200 m,

1907 Herzog (M!, holotype). CMA: 12/16/44.
Chemistry: psoromic and conpsoromic acids.

Usnea amalie was mentioned wrongly for Argentina and Uruguay, due to misidentifications with *U. fastuosa*, from which it differs by the few ramifications, a reticulate and concolorous trunk and the lack of papillae, tubercles and fibrils. *Usnea amaliae* has subterminal or lateral apothecia, without or with scarce marginal fibrils. The cortex is mat, reticulate and cracked, thick (10–13%); the medulla is white, thin and compact (14–20%); the axis is straight, sometimes fistulose in main branches and very thick (33–65%). This species is probably very closely related to *U. roccelina* Motyka, a strictly saxicolous species occurring in the Neotropical Andes further north.

Usnea miliaria Taylor, Hook. London J. Bot., 6: 192. 1847. TYPE: CHILE. Arica, *Cumming 1477* (G!, holotype).

The report of this species in Argentina (Osorio 1968) was based on misidentifications of *U. fastuosa* specimens. Therefore, this species is excluded from the Argentinian flora.

ACKNOWLEDGMENTS

We are much indebted to the directors and curators of the herbaria cited for the loan of material. Financial support was given to the senior author by CONICET scholarships (Beca de posgrado Tipo I y Tipo II), a grant from Myndel Botanica Foundation (Becas Pedersen 2008) and the Research Grant Program in Plant Systematics 2008 from the International Association for Plant Taxonomy. We also thank the financial support from SECYT–UNC.

LITERATURE CITED

- Brodo, I. M., S. Duran Sharnoff & S. Sharnoff. 2001. Lichens of North America. Yale University Press, New Haven, Connecticut.
- Cabrera, A. L. 1971. Fitogeografía de la República Argentina. Boletín de la Sociedad Argentina de Botánica 14: 1–42.
- Clerc, P. 1984. Contribution à la révision de la systématique des usnées (Ascomycotina, *Usnea*) d'Europe. I. *Usnea florida* (L.) Wigg. emend. Clerc. Cryptogamie, Bryologie et Lichénologie 5: 333–360.
- . 1987a. Systematics of the *Usnea fragilesens* aggregate, and its distribution in Scandinavia. Nordic Journal of Botany 7: 479–495.
- . 1987b. On the morphology of soralia in the genus *Usnea*. Bibliotheca Lichenologica 25: 99–102.
- . 1992. Some new or interesting species of the genus *Usnea* (Lichenized Ascomycetes) in the British Isles. Candollea 47: 513–526.
- . 1997. Notes on the genus *Usnea* Dill. ex Adanson. Lichenologist 29: 209–215.
- . 1998. Species concepts in the genus *Usnea* (Lichenized Ascomycetes). Lichenologist 30: 321–340.
- . 2004. Notes on the genus *Usnea* Adanson. II. Bibliotheca Lichenologica 88: 79–90.
- . 2006. Synopsis of *Usnea* (lichenized Ascomycetes) from the Azores with additional information on the species in Macaronesia. Lichenologist 38: 191–212.
- . 2007. *Usnea*. Pages 302–335. In T. H. Nash III, C. Gries & F. Bungartz (eds.), Lichen Flora of the Greater Sonoran Desert Region. Volume 3. Lichens Unlimited, Arizona State University, Tempe, Arizona.
- & M. A. Herrera Campos. 1997. Saxicolous species of *Usnea* subgenus *Usnea* (Lichenized Ascomycetes) in North America. The Bryologist 100: 281–301.
- Culberson, C. F. & K. Ammann. 1979. Standardmethode zur Dünnschichtchromatographie von Flechtensubstanzen. Herzogia 5: 1–24.
- De la Sota, E. R., G. E. Giudice, M. Ponce, J. P. Ramos & M. Arturi. 2004. Relaciones Fitogeográficas de la Flora Pteridofítica Serrana Bonaerense. Boletín de la Sociedad Argentina de Botánica 39: 181–194.
- Fos, S. & P. Clerc. 2000. The lichen genus *Usnea* on *Quercus suber* in Iberian cork–oak forests. Lichenologist 32: 67–88.
- Halonen, P., P. Clerc, T. Goward, I. M. Brodo & K. Wulff. 1998. Synopsis of the genus *Usnea* (Lichenized Ascomycetes) in British Columbia, Canada. The Bryologist 101: 36–60.
- Herrera–Campos, M. A., P. Clerc & T. H. Nash. 1998. Pendulous species of *Usnea* from the temperate forests in Mexico. The Bryologist 101: 303–329.
- , T. H. Nash & A. Zambrano García. 2001. Preliminary study of the *Usnea fragilesens* aggregate in Mexico. The Bryologist 104: 235–259.
- InfoStat. 2009. InfoStat versión 2009. Grupo InfoStat, FCA, Universidad Nacional de Córdoba, Argentina.
- James, P. W., P. Clerc & O. W. Purvis. 1992. *Usnea*. Pages 620–629. In O. W. Purvis, B. J. Coppins, D. L. Hawksworth, P. W. James & D. M. Moore (eds.), The Lichen Flora of Great Britain and Ireland. Natural History Museum Publications, London, United Kingdom.
- Lamb, I. M. 1958. La vegetación líquénica de los Parques Nacionales Patagónicos. Anales de Parques Nacionales 7: 1–188.
- Motyka, J. 1936–1938. Lichenum generis *Usnea* studium monographicum pars systematica. 2 vols. Leopoli: privately printed.
- Ohmura, Y. 2001. Taxonomic study of the genus *Usnea* (lichenized Ascomycetes) in Japan and Taiwan. Journal of the Hattori Botanical Laboratory 90: 1–96.

- & H. Kashiwadani. 2000. *Usnea subfloridana* Stirt. (Parmeliaceae) and its related species in Eastern Asia. *Journal of Japanese Botany* 75: 164–177.
- & H. Kanda. 2004. Taxonomic status of section *Neuropogon* in the genus *Usnea* elucidated by morphological comparisons and ITS rDNA sequences. *Lichenologist* 36: 217–225.
- Osorio, H. S. 1967. Contribution to the lichen flora of Uruguay III. Some additional new localities. *Comunicaciones Botánicas del Museo de Historia Natural de Montevideo* 4: 1–10.
- . 1968. Contributions to the Lichen Flora of Argentina. I. Some Lichens from the Province of Buenos Aires. *Bryologist* 71: 285–286.
- . 1980. Contribution to the lichen flora of Uruguay XIII. Lichens from Sierra Mahoma, San Jose Department. *Phytologia* 45: 217–220.
- . 1981. Contribution to the lichen flora of Uruguay XVI. Lichens collected by Mariano B. Berro. *Phytologia* 47: 393–396.
- . 1982. Contribution to the lichen flora of Uruguay XVII. The scientific name of the “Yerba de la Piedra”. *Phytologia* 52: 217–220.
- . 1987. Contributions to the Lichen Flora of Argentina. XVI. Lichens from Sierra de la Ventana, Buenos Aires Province. *Comunicaciones Botánicas del Museo de Historia Natural de Montevideo* 4: 1–11.
- . 1992. Contribution to the lichen flora of Uruguay. XXIV. Lichens from Sierra San Miguel, Rocha Department. *Boletín de la Sociedad Argentina de Botánica* 28: 37–40.
- . 1993. Contribution to the lichen flora of Uruguay. XXVI. Additions and corrections. *Comunicaciones Botánicas del Museo de Historia Natural de Montevideo* 5: 1–6.
- . 1995. Contribution to the lichen flora of Uruguay. XXVIII. Lichens from southern Rocha. *Comunicaciones Botánicas del Museo de Historia Natural de Montevideo* 5(103): 1–12.
- . 1996. Contribution to the lichen flora of Uruguay. XXIX. Lichens from Rivera Department. *Comunicaciones Botánicas del Museo de Historia Natural de Montevideo* 5: 1–5.
- . 1997. Contribution to the lichen flora of Brazil. XXXIV. Lichens from Laguna, Santa Catarina State. *Comunicaciones Botánicas del Museo de Historia Natural de Montevideo* 6: 1–4.
- . 2001. Contribution to the lichen flora of Uruguay. XXXIV. Lichens from Isla de Flores, Rio de la Plata. *Comunicaciones Botánicas Museos Nacionales de Historia Natural y Antropología* 6: 1–7.
- . 2005. Contribution to the lichen flora of Uruguay. XL. New or additional records. *Comunicaciones Botánicas, Museo de Historia Natural y Antropología [Montevideo]* 6: 1–8.
- Øvstedal, D. O. & R. I. Lewis Smith. 2001. Lichens of Antarctica and South Georgia: A Guide to Their Identification and Ecology. *Studies in Polar Research*, Cambridge University Press, Cambridge, United Kingdom.
- Räsänen, V. 1939. De *Usnea* nova ex Argentina. *Borbasia* 1: 115.
- . 1941. La Flora liquenológica de Mendoza (Argentina). *Anales de la Sociedad Científica Argentina* 131: 97–110.
- Rodríguez, J. M. & C. Estrabou. 2008. *Usnea amblyoclada* “barba de piedra” (Ascomycetes liquenizados) en Argentina. *Boletín de la Sociedad Argentina de Botánica* 43: 221–225.
- Stevens, G. N. 2004. Usneaceae. Pages 78–98 & 107–115. In P. M. McCarthy & K. Mallett (eds.), *Flora of Australia*. Volume 56A, Lichens 4. ABRS/CSIRO Australia, Melbourne, Australia.
- Swinscow, T. D. V. & H. Krog. 1974. *Usnea* subgenus *Eumitria* in East Africa. *Norwegian Journal of Botany* 21: 165–185.
- & ———. 1975. The *Usnea undulata* aggregate in East Africa. *Lichenologist* 7: 121–138.
- & ———. 1976a. The *Usnea bornmuelleri* aggregate in East Africa. *Norwegian Journal of Botany* 23: 23–31.
- & ———. 1976b. The *Usnea articulata* aggregate in East Africa. *Norwegian Journal of Botany* 23: 261–268.
- & ———. 1978. Pendulous species of *Usnea* in East Africa. *Norwegian Journal of Botany* 25: 221–241.
- & ———. 1979. The fruticose species of *Usnea* subgenus *Usnea* in East Africa. *Lichenologist* 11: 207–252.
- Truong, C., Bungartz, F. & P. Clerc. 2011. The genus *Usnea* in the tropical Andes and Galapagos Islands: species with a red–orange cortical or subcortical pigmentation. *The Bryologist* 114: xxx–xxx.
- Walker, J. 1985. The lichen genus *Usnea* subgenus *Neuropogon*. *Bulletin of the British Museum (Natural History) Botany* 13: 1–130.
- White, F. J. & P. W. James. 1985. A new guide to microchemical techniques for the identification of lichen substances. *Bulletin British Lichen Society* 57(supl.): 1–41.
- Wirtz, N., C. Printzen, L. Sancho & H. T. Lumbsch. 2006. The phylogeny and classification of *Neuropogon* and *Usnea* (Parmeliaceae, Ascomycota) revisited. *Taxon* 55: 367–376.

ms received June 14, 2010; accepted March 12, 2011.

Supplementary Fig. S1. Saxicolous lichen communities with *Usnea saxidilatata* in Central Andes, Western Argentina.

Supplementary Fig. S2. Known distributions of saxicolous *Usnea* subgenus *Usnea* species in Argentina and Uruguay. Some dots on the maps may represent more than one locality. **A.** *U. amblyoclada*. **B.** *U. densirostra*. **C.** *U. durietzii*. **D.** *U. exigua*. **E.** *U. fastuosa*. **F.** *U. hieronymii*. **G.** *U. lutii*. **H.** *U. saxidilatata*.