

FIELD DATA

Date: _____ Time Start: _____
 Town: _____ Time Stop: _____
 Locality: _____
 Observers: _____
 Weather: _____
 Notes: _____

DRAGONFLIES AND DAMSELFLIES OF RHODE ISLAND

Distribution
 "Ubic" = Ubiquitous: found in 31 or more towns, 5 counties
 "Wide" = Widespread: found in 18-30 towns, 4-5 counties
 "Ltd" = Limited: found in 7-17 towns, counties variable
 "Rest" = Restricted: found in 6 or fewer towns

Abundance
 "Abun" = Abundant "Com" = Common
 "Locl" = May be common but only in certain locales
 "Uncm" = Uncommon "Rare" = Rare

Family	Scientific Name	Common Name	Dist/Abun
Lestidae (Spreadwings)			
___	<i>Lestes australis</i>	Southern Spreadwing	Rest/Rare
___	<i>Lestes congener</i>	Spotted Spreadwing	Wide/Com
___	<i>Lestes disjunctus</i>	Northern Spreadwing	Ubiq/Abun
___	<i>Lestes dryas</i>	Emerald Spreadwing	Rest/Uncm
___	<i>Lestes eurinus</i>	Amber-winged Spreadwing	Wide/Uncm
___	<i>Lestes forcipatus</i>	Sweetflag Spreadwing	Ubiq/Abun
___	<i>Lestes inaequalis</i>	Elegant Spreadwing	Wide/Com
___	<i>Lestes rectangularis</i>	Slender Spreadwing	Ubiq/Abun
___	<i>Lestes unguiculatus</i>	Lyre-tipped Spreadwing	Rest/Rare
___	<i>Lestes vigilax</i>	Swamp Spreadwing	Ubiq/Abun
Calopterygidae (Broad-winged Damselfs)			
___	<i>Calopteryx aequabilis</i>	River Jewelwing	Ltd/Uncm
___	<i>Calopteryx dimidiata</i>	Sparkling Jewelwing	Ltd/Com
___	<i>Calopteryx maculata</i>	Ebony Jewelwing	Ubiq/Abun
___	<i>Hetaerina americana</i>	American Rubyspot	Ltd/Uncm-Locl
Coenagrionidae (Pond Damselfs)			
___	<i>Amphiagrion saucium</i>	Eastern Red Damself	Wide/Uncm
___	<i>Argia apicalis</i>	Blue-fronted Dancer	Ltd/Uncm
___	<i>Argia fumipennis</i>	Variable Dancer	Ubiq/Abun
___	<i>Argia moesta</i>	Powdered Dancer	Wide/Com

FOLD right panel to HERE

___	<i>Argia translata</i>	Dusky Dancer	Ltd/Uncm
___	<i>Chromagrion conditum</i>	Aurora Damself	Wide/Abun
___	<i>Enallagma annexum</i>	Northern Bluet	Ltd/Uncm
___	<i>Enallagma aspersum</i>	Azure Bluet	Ubiq/Com
___	<i>Enallagma boreale</i>	Boreal Bluet	Ltd/Uncm
___	<i>Enallagma civile</i>	Familiar Bluet	Ubiq/Abun
___	<i>Enallagma daeckii</i>	Attenuated Bluet	Ltd/Uncm
___	<i>Enallagma divagans</i>	Turquoise Bluet	Wide/Abun
___	<i>Enallagma doubledayi</i>	Atlantic Bluet	Ltd/Com
___	<i>Enallagma durum</i>	Big Bluet	Ltd/Uncm
___	<i>Enallagma ebrium</i>	Marsh Bluet	Ltd/Com
___	<i>Enallagma exsulans</i>	Stream Bluet	Wide/Com
___	<i>Enallagma geminatum</i>	Skimming Bluet	Ubiq/Abun
___	<i>Enallagma hageni</i>	Hagen's Bluet	Ltd/Uncm
___	<i>Enallagma laterale</i>	New England Bluet	Wide/Abun
___	<i>Enallagma minusculum</i>	Little Bluet	Ltd/Uncm
___	<i>Enallagma pictum</i>	Scarlet Bluet	Ltd/Uncm
___	<i>Enallagma recurvatum</i>	Pine Barrens Bluet	Ltd/Uncm
___	<i>Enallagma signatum</i>	Orange Bluet	Ubiq/Abun
___	<i>Enallagma traviatum</i>	Slender Bluet	Wide/Com
___	<i>Enallagma vesperum</i>	Vesper Bluet	Wide/Uncm
___	<i>Enallagma weewa</i>	Blackwater Bluet	Rest/Uncm
___	<i>Ischnura hastata</i>	Citrine Forktail	Wide/Com
___	<i>Ischnura kellicotti</i>	Lilypad Forktail	Wide/Com
___	<i>Ischnura posita</i>	Fragile Forktail	Ubiq/Abun
___	<i>Ischnura ramburii</i>	Rambur's Forktail	Rest/Uncm
___	<i>Ischnura verticalis</i>	Eastern Forktail	Ubiq/Abun
___	<i>Nehalennia gracilis</i>	Sphagnum Sprite	Wide/Abun
___	<i>Nehalennia integricolis</i>	Southern Sprite	Rest/Rare
___	<i>Nehalennia irene</i>	Sedge Sprite	Wide/Com
Aeshnidae (Darners)			
___	<i>Aeshna canadensis</i>	Canada Darner	Ltd/Uncm
___	<i>Aeshna clepsydra</i>	Mottled Darner	Wide/Com
___	<i>Aeshna constricta</i>	Lance-tipped Darner	Wide/Com
___	<i>Aeshna tuberculifera</i>	Black-tipped Darner	Wide/Com
___	<i>Aeshna umbrosa</i>	Shadow Darner	Ubiq/Abun
___	<i>Aeshna verticalis</i>	Green-striped Darner	Wide/Abun
___	<i>Anax junius</i>	Common Green Darner	Ubiq/Abun
___	<i>Anax longipes</i>	Comet Darner	Ltd/Uncm
___	<i>Basiaeschna janata</i>	Springtime Darner	Wide/Com
___	<i>Boyeria vinosa</i>	Fawn Darner	Wide/Com
___	<i>Epiaeschna heros</i>	Swamp Darner	Wide/Com
___	<i>Gomphaeschna antilope</i>	Taper-tailed Darner	Rest/Rare
___	<i>Gomphaeschna furcillata</i>	Harlequin Darner	Wide/Com
___	<i>Nasiaeschna pentacantha</i>	Cyrano Darner	Wide/Uncm
___	<i>Rhionaeschna mutata</i>	Spatterdock Darner	Ltd/Uncm

Gomphidae (Clubtails)			
___	<i>Arigomphus furcifer</i>	Lilypad Clubtail	Ltd/Uncm
___	<i>Arigomphus villosipes</i>	Unicorn Clubtail	Wide/Com
___	<i>Dromogomphus spinosus</i>	Blk-shouldrd Spinyleg	Wide/Uncm-Locl
___	<i>Hagenius brevistylus</i>	Dragonhunter	Wide/Com
___	<i>Hylogomphus abbreviatus</i>	Spine-crowned Clubtail	Rest/Rare
___	<i>Hylogomphus adelphus</i>	Mustached Clubtail	Rest/Rare
___	<i>Lanthus vernalis</i>	Southern Pygmy Clubtail	Rest/Rare
___	<i>Ophiogomphus aspersus</i>	Brook Snaketail	Rest/Uncm
___	<i>Ophiogomphus mainensis</i>	Maine Snaketail	Rest/Uncm
___	<i>Phanogomphus exilis</i>	Lancet Clubtail	Wide/Abun
___	<i>Phanogomphus lividus</i>	Ashy Clubtail	Ltd/Uncm
___	<i>Phanogomphus spicatus</i>	Dusky Clubtail	Rest/Rare
___	<i>Progomphus obscurus</i>	Common Sanddragon	Rest/Uncm
___	<i>Stylogomphus albistylus</i>	Eastern Least Clubtail	Wide/Com
___	<i>Stylurus scudderi</i>	Zebra Clubtail	Rest/Rare
___	<i>Stylurus spiniceps</i>	Arrow Clubtail	Rest/Rare
Cordulegastridae (Spiketails)			
___	<i>Cordulegaster diastatops</i>	Delta-spotted Spiketail	Ltd/Uncm
___	<i>Cordulegaster maculata</i>	Twin-spotted Spiketail	Wide/Com
___	<i>Cordulegaster obliqua</i>	Arrowhead Spiketail	Ltd/Uncm
Macromiidae (Cruisers)			
___	<i>Didymops transversa</i>	Stream Cruiser	Wide/Com
___	<i>Macromia alleghaniensis</i>	Allegheny River Cruiser	Rest/Rare
___	<i>Macromia illinoensis</i>	Swift River Cruiser	Wide/Com
Corduliidae (Emeralds)			
___	<i>Cordulia shurtleffii</i>	American Emerald	Ltd/Uncm
___	<i>Dorocordulia lepida</i>	Petite Emerald	Wide/Com
___	<i>Dorocordulia libera</i>	Racket-tailed Emerald	Ltd/Uncm
___	<i>Epithea canis</i>	Beaverpond Baskettail	Rest/Rare
___	<i>Epithea cynosura</i>	Common Baskettail	Ubiq/Abun
___	<i>Epithea princeps</i>	Prince Baskettail	Ubiq/Com
___	<i>Epithea semiaquea</i>	Mantled Baskettail	Rest/Rare
___	<i>Epithea spinigera</i>	Spiny Baskettail	Rest/Rare
___	<i>Helocordulia uhleri</i>	Uhler's Sundragon	Ltd/Uncm
___	<i>Neurocordulia obsoleta</i>	Umber Shadowdragon	Rest/Rare
___	<i>Somatochlora georgiana</i>	Coppery Emerald	Ltd/Uncm
___	<i>Somatochlora linearis</i>	Mocha Emerald	Wide/Com
___	<i>Somatochlora tenebrosa</i>	Clamp-tipped Emerald	Wide/Com
___	<i>Somatochlora walshii</i>	Brush-tipped Emerald	Ltd/Uncm
___	<i>Somatochlora williamsoni</i>	Williamson's Emerald	Rest/Rare
___	<i>Williamsonia lintneri</i>	Ringed Boghaunter	Ltd/Uncm
Libellulidae (Skimmers) OVER			

V. Brown ©RINHS 2022

V. Brown©RINHS 2022 — You may copy this checklist unaltered for any non-commercial purpose.
 Print it back-to-back, flipping it on the short edge, trim it to ~ 6"x 10" (at the crosses printed in the corners), and fold it into thirds, each 3 3/8" wide.

Libellulidae (Skimmers)

___	Celithemis elisa	Calico Pennant	Ubiq/Abun
___	Celithemis eponina	Halloween Pennant	Ubiq/Abun
___	Celithemis fasciata	Banded Pennant	Ltd/Uncm
___	Celithemis martha	Martha's Pennant	Ltd/Uncm-Locl
___	Erythemis simplicicollis	Eastern Pondhawk	Ubiq/Abun
___	Erythrodiplax berenice	Seaside Dragonlet	Wide/Com
___	Ladona deplanata	Blue Corporal	Rest/Rare
___	Ladona exusta	White Corporal	Wide/Abun
___	Ladona julia	Chalk-fronted Corporal	Ltd/Uncm
___	Leucorrhinia frigida	Frosted Whiteface	Ltd/Com
___	Leucorrhinia glacialis	Crimson-ringd Whiteface	Rest/Rare
___	Leucorrhinia hudsonica	Hudsonian Whiteface	Ltd/Uncm
___	Leucorrhinia intacta	Dot-tailed Whiteface	Ubiq/Abun
___	Leucorrhinia proxima	Belted Whiteface	Ltd/Uncm
___	Libellula auripennis	Golden-wingd Skimmer	Rest/Rare
___	Libellula axilena	Bar-winged Skimmer	Ltd/Uncm
___	Libellula cyanea	Spangled Skimmer	Ubiq/Abun
___	Libellula incesta	Slaty Skimmer	Ubiq/Abun
___	Libellula luctuosa	Widow Skimmer	Ubiq/Abun
___	Libellula needhami	Needham's Skimmer	Ltd/Uncm
___	Libellula pulchella	Twelve-spotted Skimmer	Ubiq/Abun
___	Libellula quadrimaculata	Four-spotted Skimmer	Wide/Uncm
___	Libellula semifasciata	Painted Skimmer	Ubiq/Com
___	Libellula vibrans	Great Blue Skimmer	Wide/Uncm
___	Nannothemis bella	Elfin Skimmer	Ltd/Uncm
___	Pachydiplax longipennis	Blue Dasher	Ubiq/Abun
___	Pantala flavescens	Wandering Glider	Ubiq/Com
___	Pantala hymenaea	Spot-winged Glider	Wide/Com
___	Perithemis tenera	Eastern Amberwing	Ubiq/Abun
___	Plathemis lydia	Common Whitetail	Ubiq/Abun
___	Sympetrum costiferum	Saffron-wingd Meadowhawk	Ltd/Uncm
___	Sympetrum internum	Cherry-faced Meadowhawk	Ubiq/Abun
___	Sympetrum rubicundulum	Ruby Meadowhawk	Rest/Rare
___	Sympetrum semicinctum	Band-wingd Meadowhawk	Wide/Uncm
___	Sympetrum vicinum	Autumn Meadowhawk	Ubiq/Abun
___	Tramea carolina	Carolina Saddlebags	Wide/Uncm
___	Tramea lacerata	Black Saddlebags	Ubiq/Com



Made possible with the support of:



V. Brown ©RINHS 2022

This is a checklist of the 138 Odonata species vouchered from Rhode Island during the multi-year RI Odonata Atlas project (1998-2004), headed by Brown with support of The Nature Conservancy. Taxonomy and nomenclature follow Paulson and Dunkle (2018) "A checklist of North American Odonata." This checklist was developed to accompany the book, *Dragonflies and Damselflies of Rhode Island* by Virginia A. Brown, illus. by Nina Briggs (2020) RI Dept. of Environmental Management Division of Fish & Wildlife.

Rhode Island Natural History Survey is a member-supported, non-profit founded in 1994 to engage people knowledgeable about RI's animals, plants, and natural systems with each other and with those who can use that knowledge for research, education, and conservation. The Survey supports public involvement in science and science-based solutions to environmental challenges through ecological research and inventory, databases and publications, and public programs including Rhode Island BioBlitz. Membership is open to all. For more info visit the Survey on the web at rinhs.org.

Naturalists are encouraged to submit observations of species, habitats, or behaviors to the Natural History Survey. Visit rinhs.org, email info@rinhs.org, or mail to P.O. Box 1858, Kingston, RI 02881.

Users may copy this checklist unaltered for any non-commercial purpose. It is also available for download at rinhs.org/resource-library. Print it back-to-back, trim it to ~6"x10" (at the crosses printed in the corners of the main page), and fold it into thirds, each 3 3/8" wide.

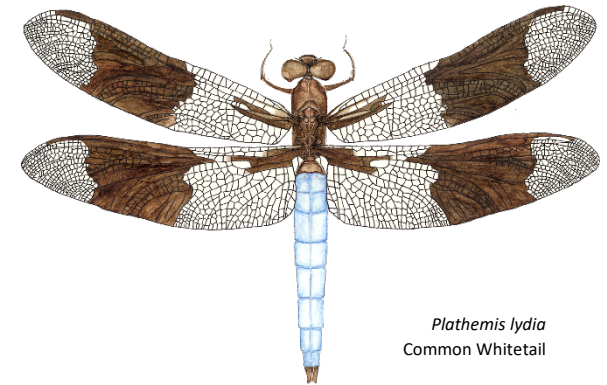


Checklist of Rhode Island Odonata

(Dragonflies & Damselflies)

Virginia A. Brown

Illustrations by Nina Briggs



Plathemis lydia
Common Whitetail

