

# 320 drawings of the Hypotrichida (Ciliophora)

from

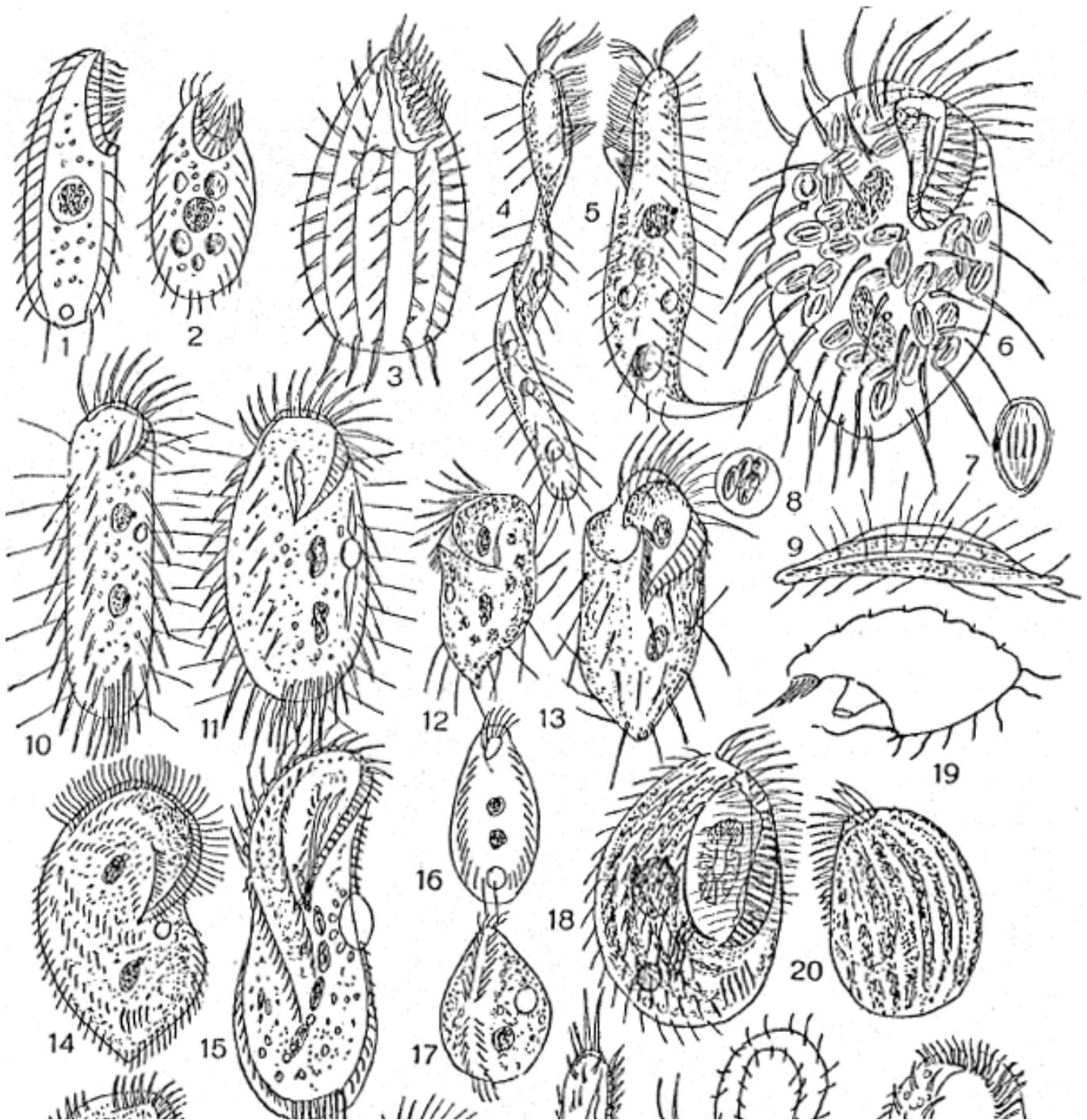
Kahl, A. 1932. *Urtiere oder Protozoa I: Wimpertiere oder Ciliata (Infusoria) 3. Spirotricha.*

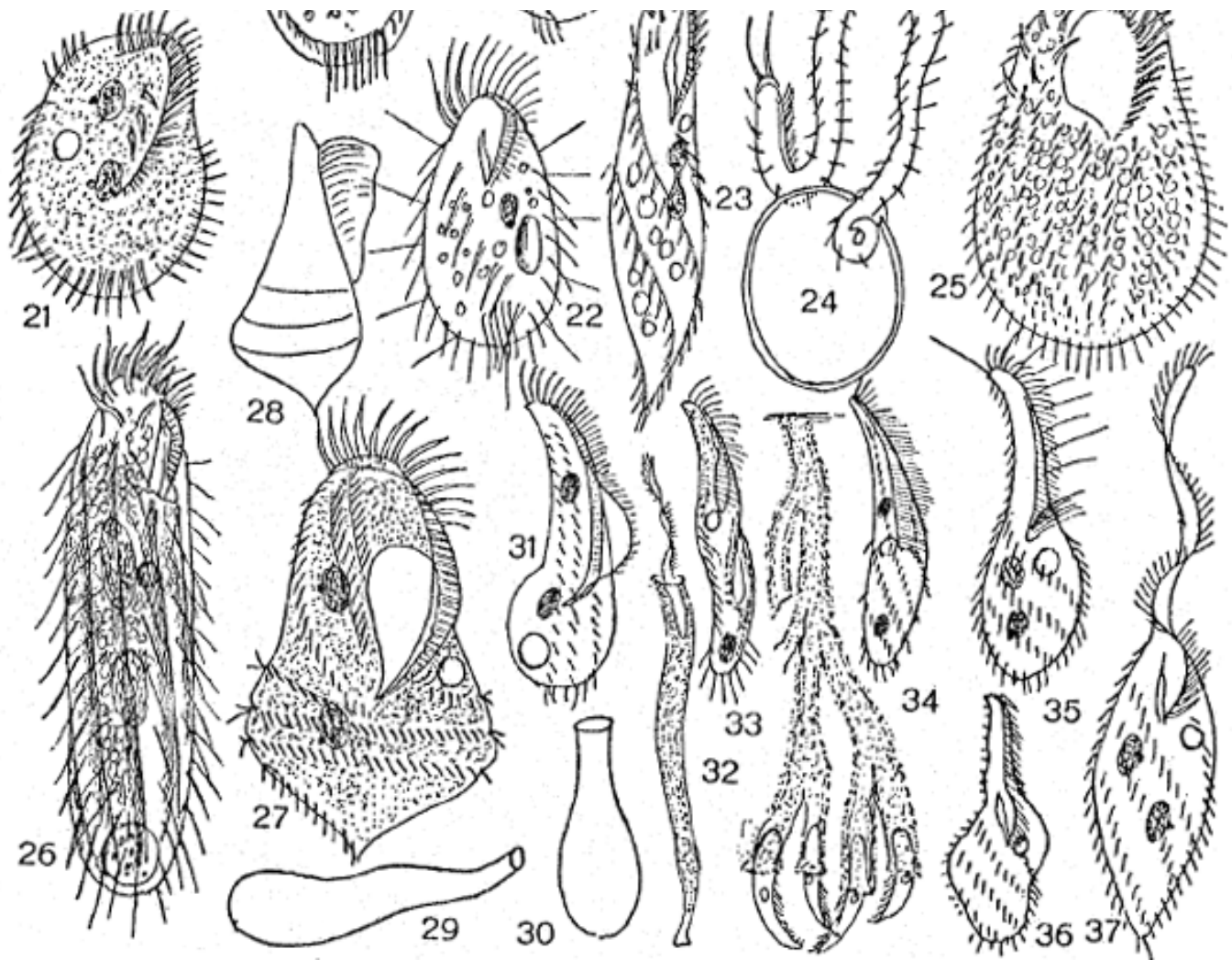
*Tierwelt Dtl.*, 25:399--650.

All of Kahl's Hypotrichida drawings (except the Euplotes-Aspidisca group). Opening this page may take a few minutes.

[Back to Homepage](#)

[Full Text Articles](#)

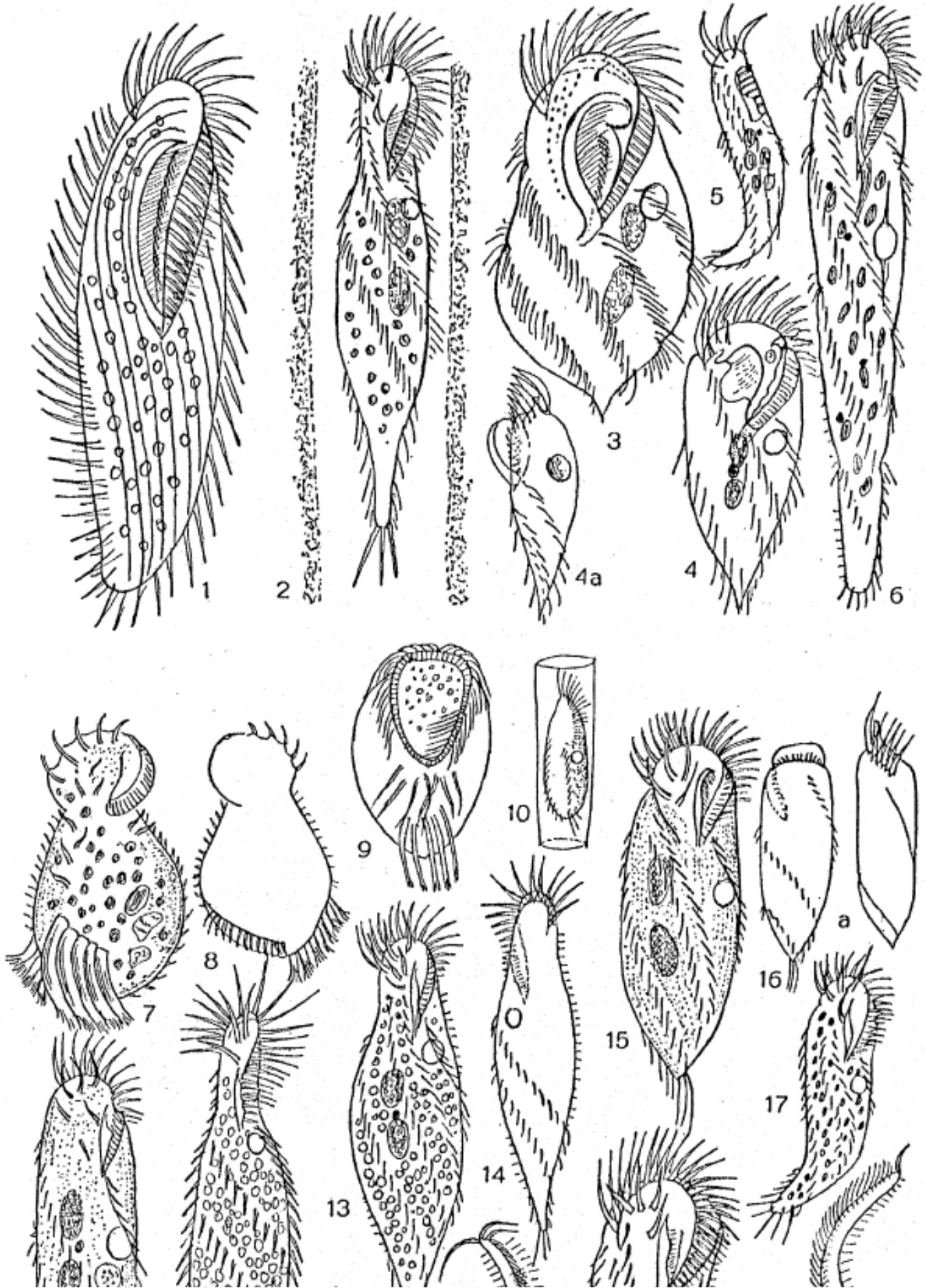




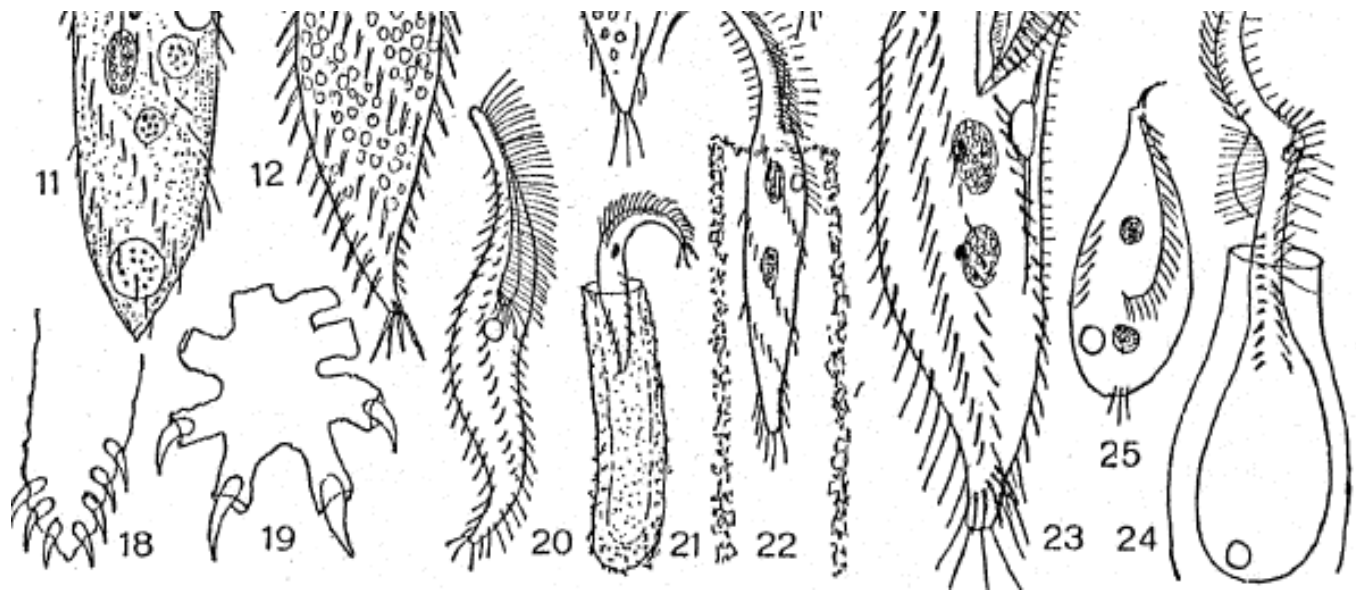
p. 542:

- Diplogmus contrax 1, 2
- Propygocirrus adhaerens 3
- Cladotricha koltzowii 4, 5
- Psilotricha viridis 6, Zoochlorella 7, Zoochl. during division 8
- Psilotricha viridis 9
- Balladyna elongata 10
- Balladyna parvula 11
- Psilotricha acuminata 12, 13
- Kerona polyporum 14
- Keronopsis helluo 15
- Psilotrix ovalis 16
- Stylonethes pyriformis 17
- Caryotricha convexa 18, 19, 20
- Balladynopsis nuda 21
- Balladyna ovata 22
- Strongylidium packi 23, 24
- Urostyla rubra 25
- Kahlia costata 26
- Hypotrichidium conicum 27, 28
- Chaetospira mülleri 29, 30
- Stichotricha opisthotonoides 31
- Chaetospira remex 32, 33

*Stichotricha socialis* 34  
*Stichotricha cornuta* 35  
*Chaetospira entzi* 36, 37.

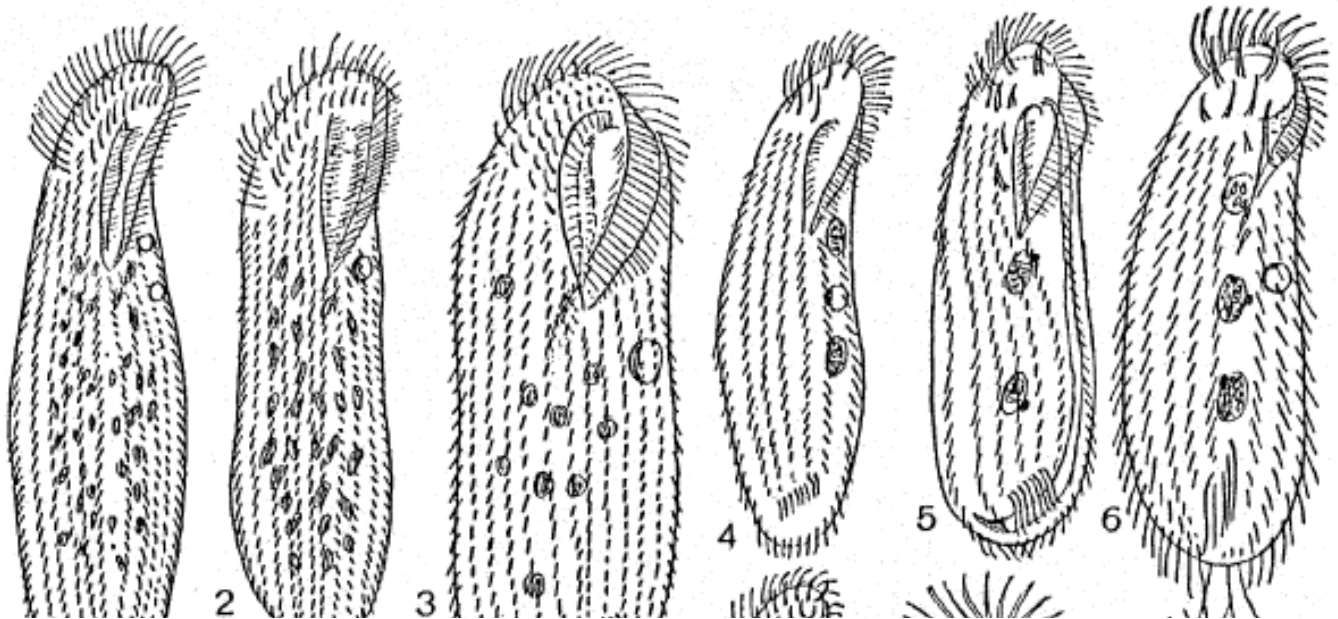


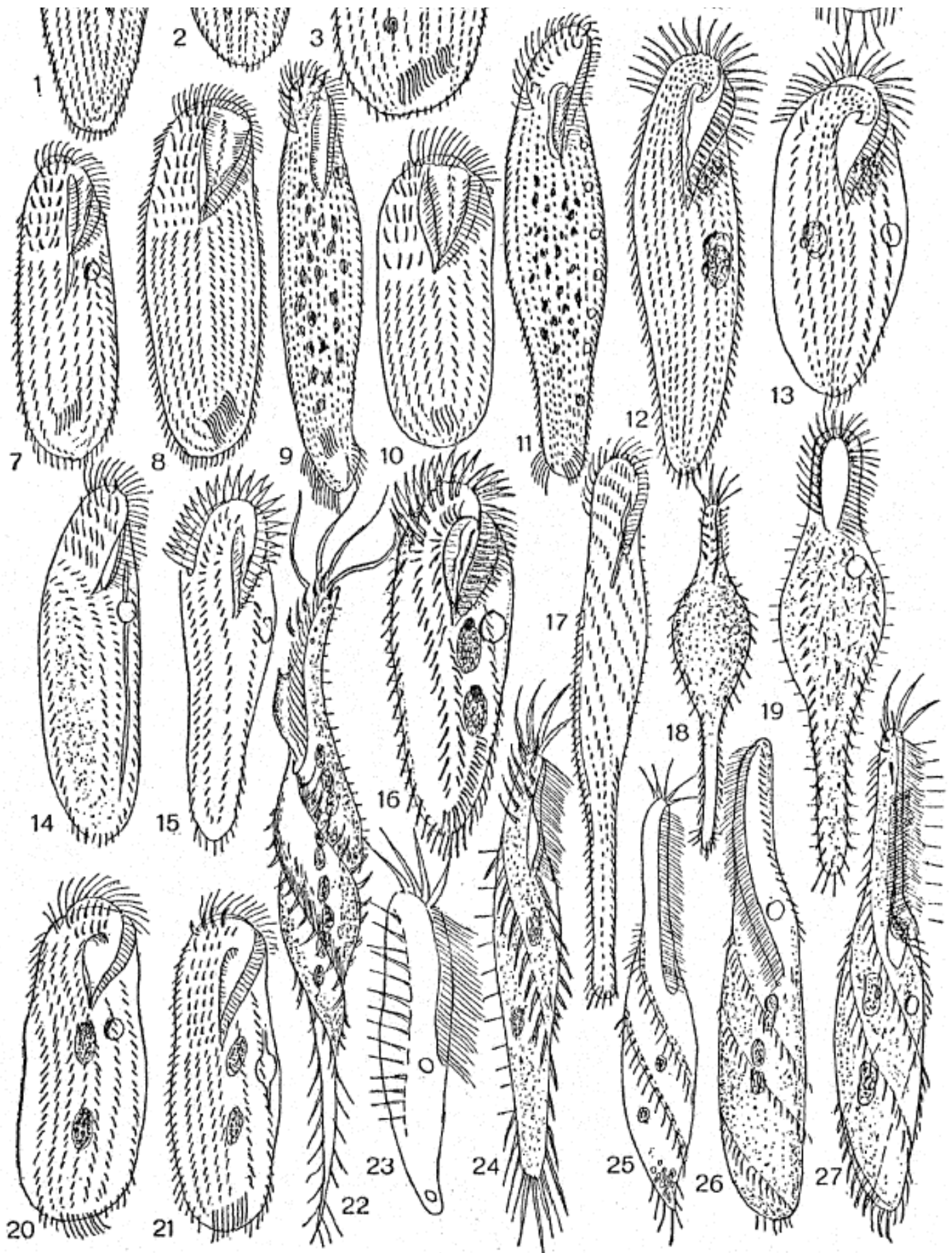




p. 552:

- Hemicycliostyla marina 1
- Strongylidium lanceolatum 2
- Hypotrichidium conicum 3
- Strongylidium labiatum 4, 4a
- Strongylidium spec. 5
- Strongylidium californicum 6
- Discocephalus rotatorius 7, 8
- Stylocoma oviformis 9
- Oxytricha tubicola 10
- Strongylidium spec. 11
- Strongylidium lanceolatum 12
- Strongylidium crassum 13, 14
- Strongylidium mucicola 15, 16
- Strongylidium muscorum 17
- Stichotricha spec. 18, 19
- Stichotricha secunda 20, 21
- Stichotricha sapropelica 22
- Paruroleptus magnificus 23
- Chaetospira mülleri 24, 25.

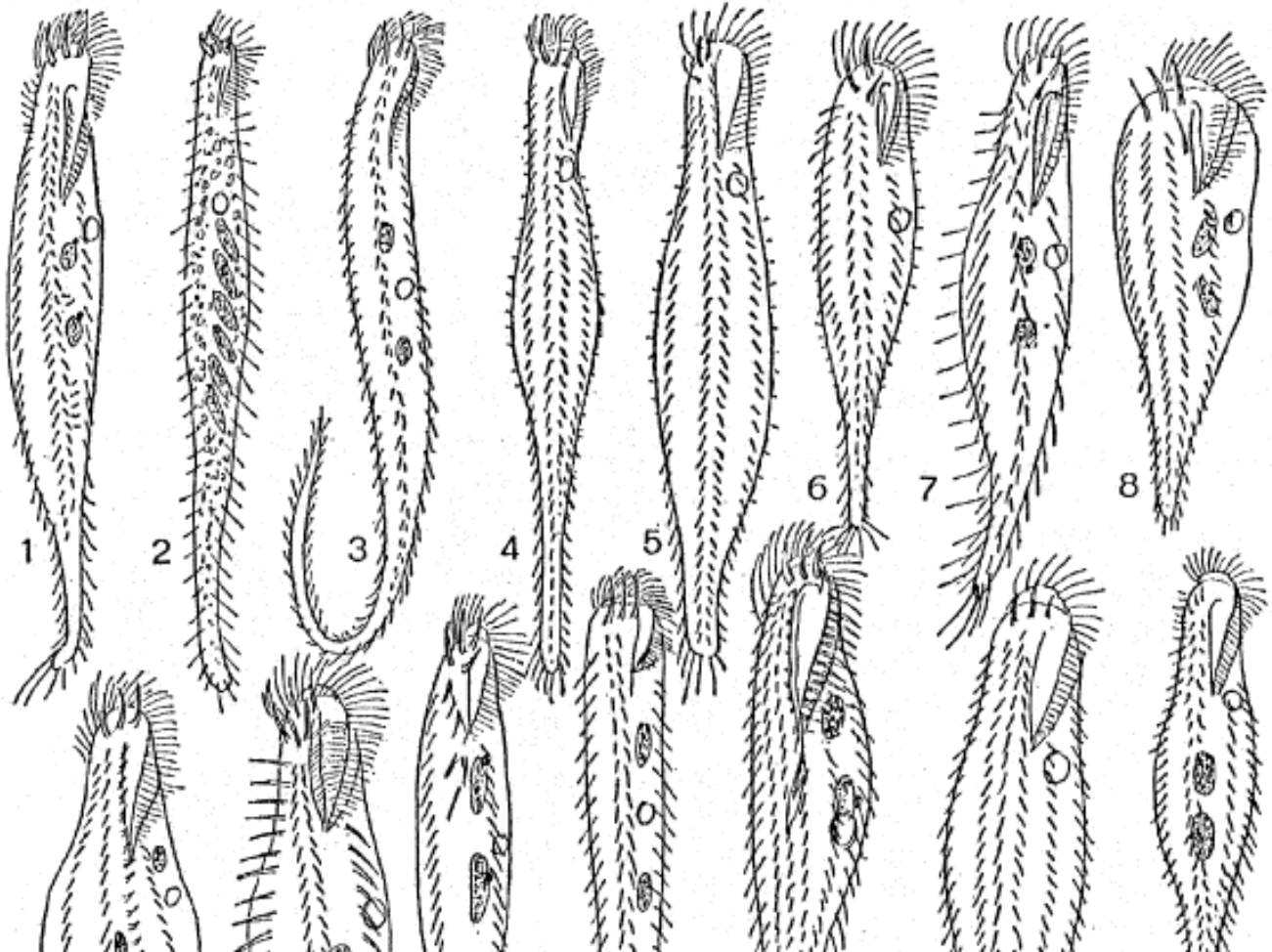


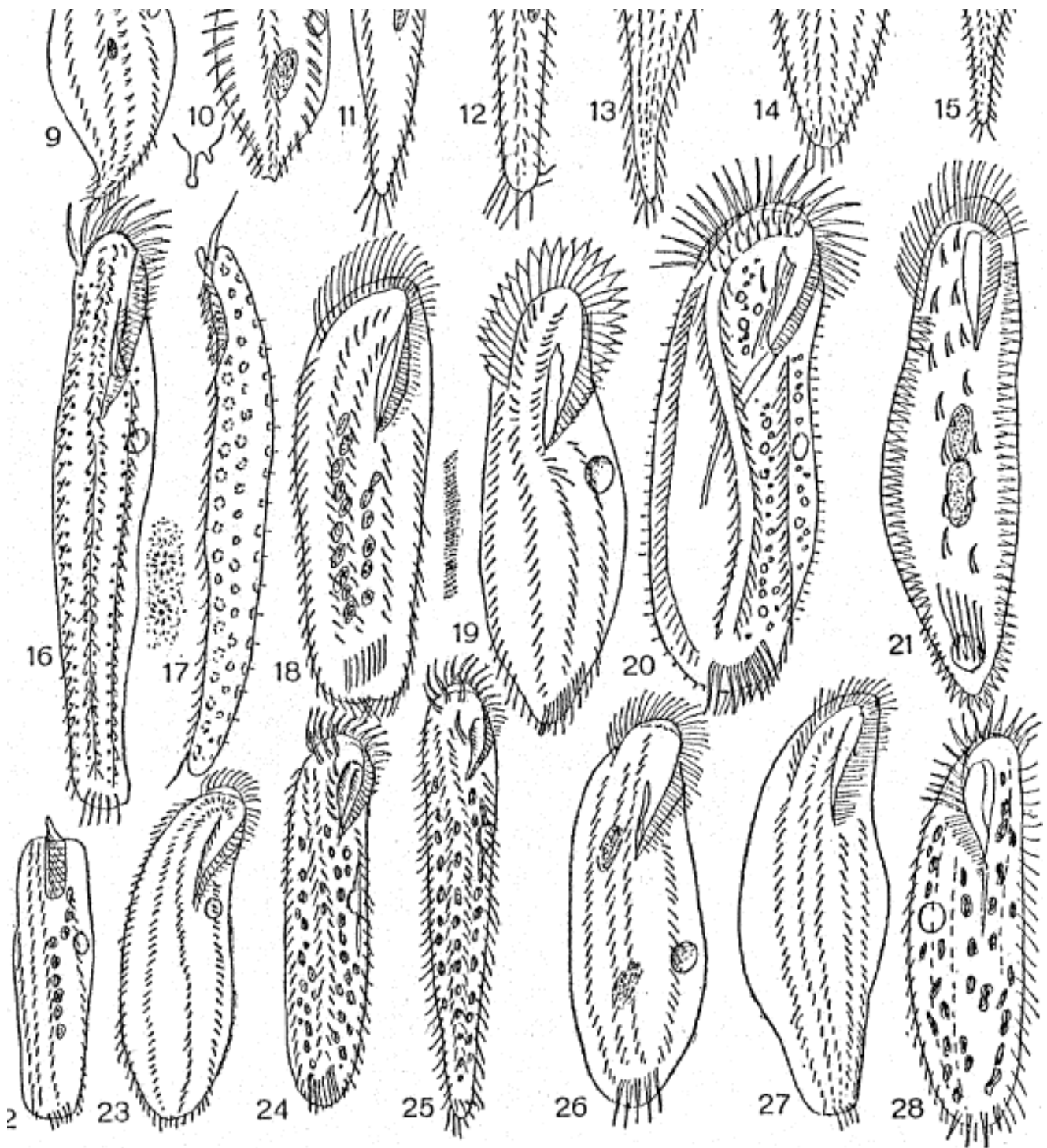


p. 562

*Hemicycliostyla sphagni* 1  
*Hemicycliostyla trichota* 2

- Urostyla grandis 3
- Urostyla weissei 4
- Urostyla flavicans 5
- Urostyla viridis 6
- Urostyla elongata 7
- Urostyla trichogaster 8
- Urostyla gigas 9
- Urostyla fulva 10
- Urostyla caudata 11
- Urostyla gracilis var. sanguinea 12
- Urostyla concha 13
- Eschaneustyla brachytona 14
- Uroleptopsis roscoviana 15
- Keronopsis spectabilis 16
- Epiclintes ambiguus 17
- Mitra retractilis 18
- Epiclintes pluvialis 19
- Urostyla urostyla 20
- Urostyla multipes 21
- Urostrongylum contortum 22
- Stichotricha horrida 23
- Stichotricha simplex 24
- Stichotricha gracilis 25
- Stichotricha saginata 26
- Stichotricha aculeata 27.

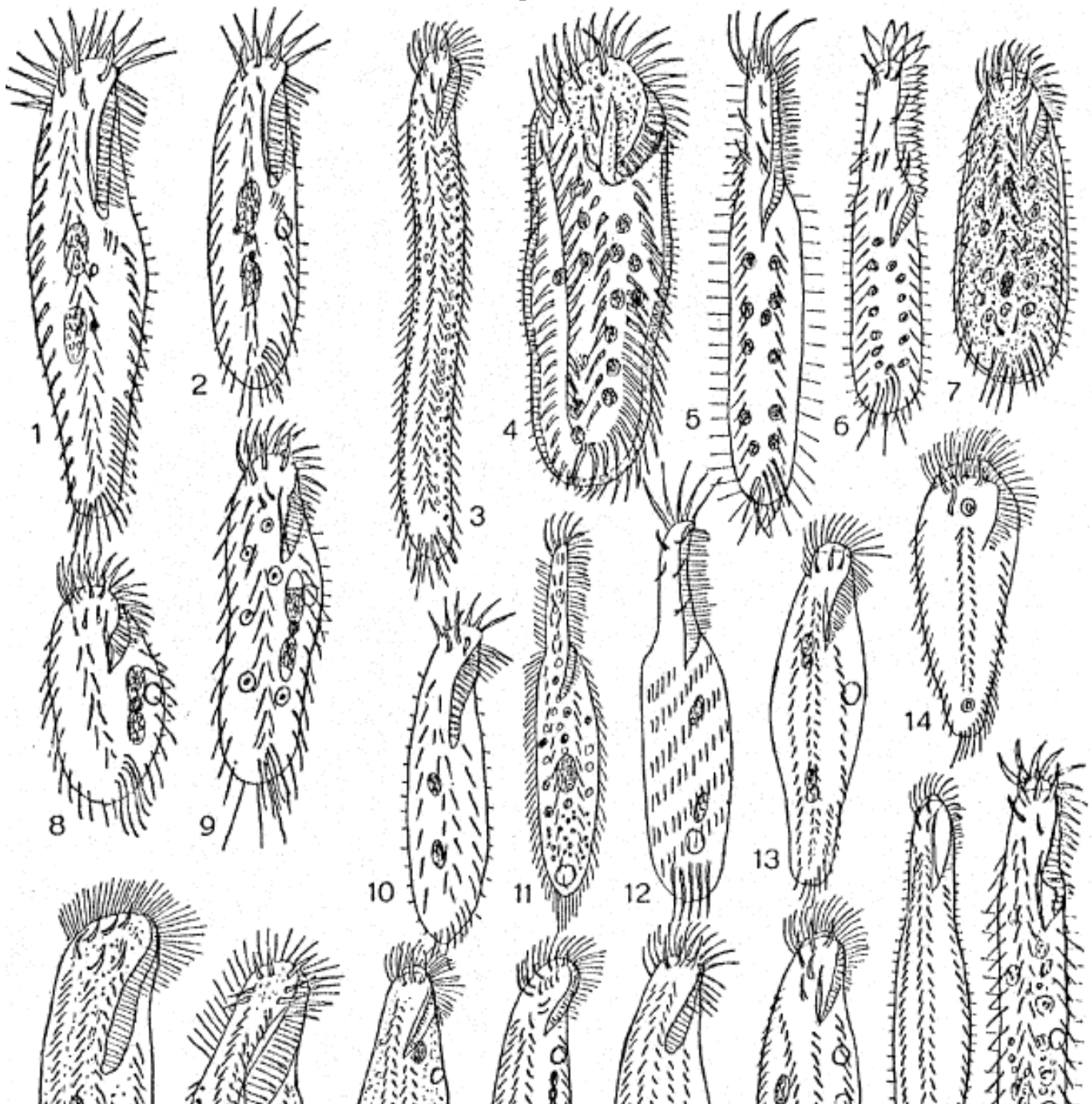




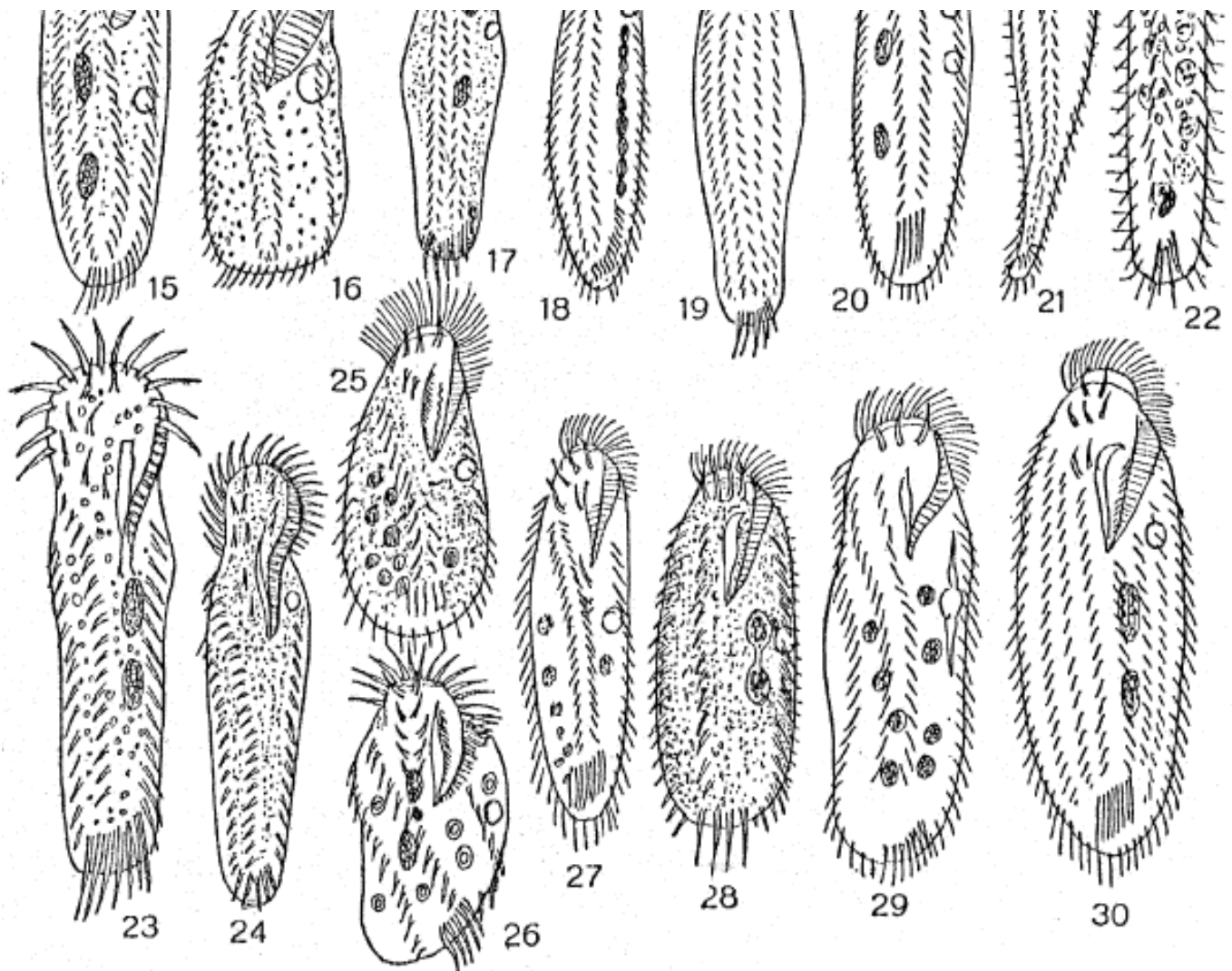
p. 572

- Uroleptus piscis 1
- Uroleptus mobilis 2
- Uroleptus rattulus 3
- Uroleptus longicaudatus 4
- Uroleptus limnetis 5
- Uroleptus dispar 6
- Paruroleptus lacteus 7
- Uroleptus sphagni 8
- Uroleptus musculus 9
- Uroleptus opisthobolus 10
- Uroleptus agilis 11
- Uroleptus violaceus 12

- Uroleptus zignis 13
- Uroleptus gibbus 14
- Uroleptus caudatus 15
- Keronopsis rubra 16, 17
- Trichotaxis stagnatilis 18
- Keronopsis multinucleata 19
- Keronopsis decolor 20
- Keronopsis coronata 21
- Keronopsis fontinalis 22
- Uroleptopsis viridis 23
- Keronopsis muscorum 24
- Uroleptus muscorum 25
- Keronopsis pernix 26
- Trichotaxis crassa 27
- Trichotaxis aquarum dulcium 28.







p. 580

- Holosticha kessleri 1
- Holosticha diademata 2
- Holosticha fasciola 3
- Holosticha lacazei 4
- Trachelostyla pediculiformis 5, 6
- Holosticha scutellum 7
- Holosticha brevis 8
- Holosticha setigera 9
- Holosticha diademata 10
- Trachelostyla pediculiformis 11
- Gastrostyla (Stichochaeta) mereschkowskii 12
- Holosticha kessleri 13
- Holosticha oculata 14
- Holosticha wrzesniowskii 15
- Holosticha punctata 16
- Holosticha gibba 17
- Keronopsis similis 18
- Trichotaxis velox 19
- Holosticha hymenophora 20
- Paruroleptus caudatus 21
- Holosticha violacea 22

*Amphisiella capitata* (marioni?) 23

*Holosticha capitata* 24

*Holosticha mystacea* 25

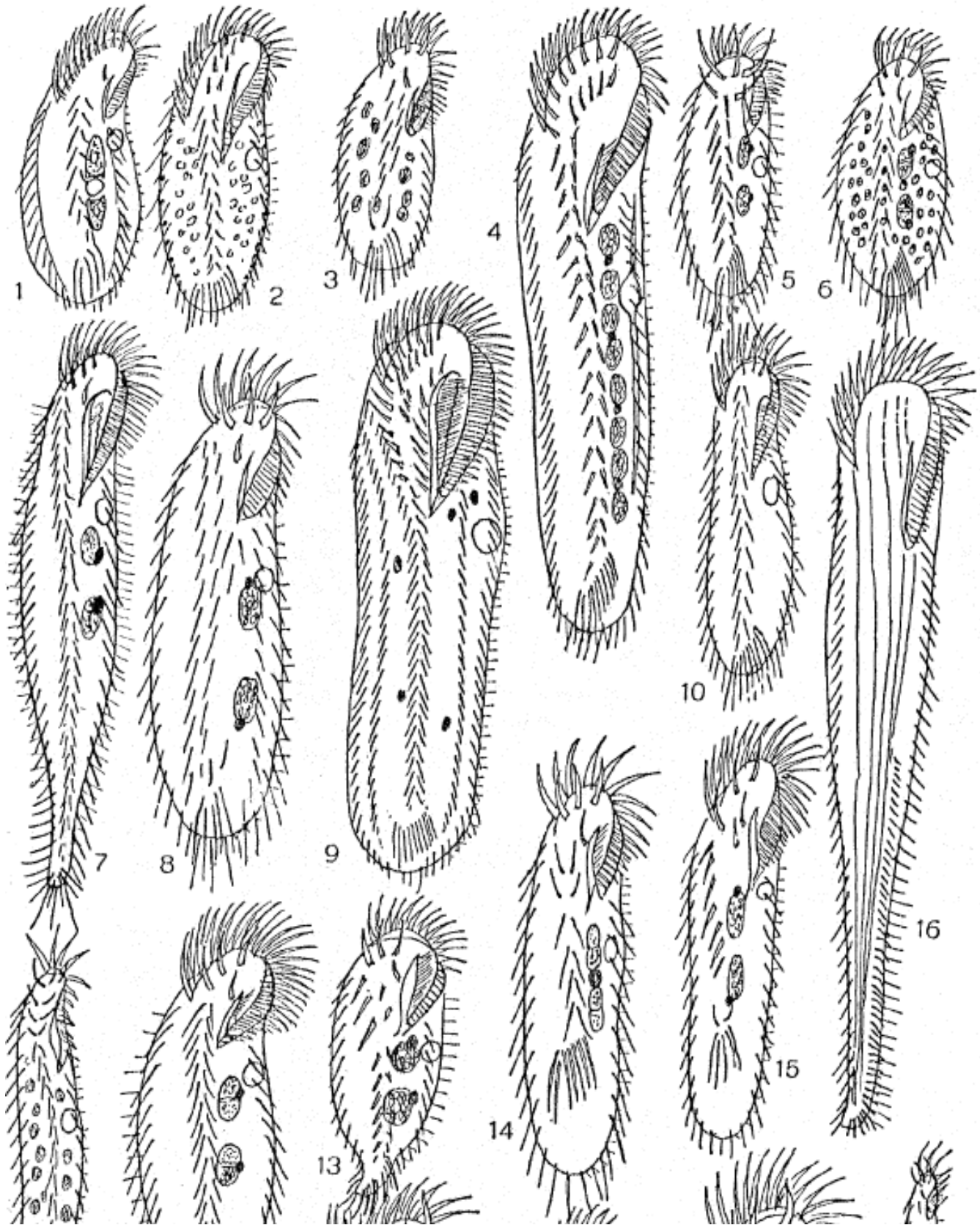
*Holosticha obliqua* 26

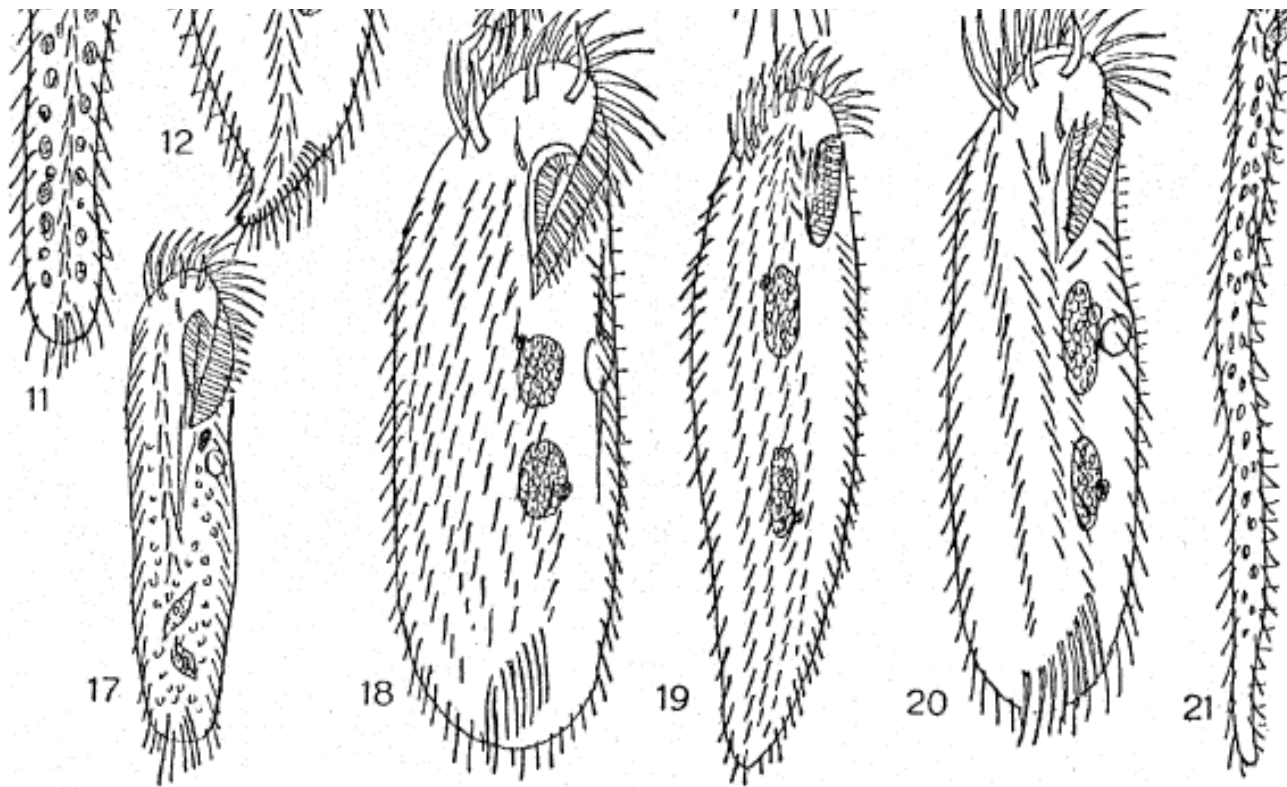
*Holosticha vernalis* 27

*Amphisiella oblonga* 28

*Holosticha intermedia* 29

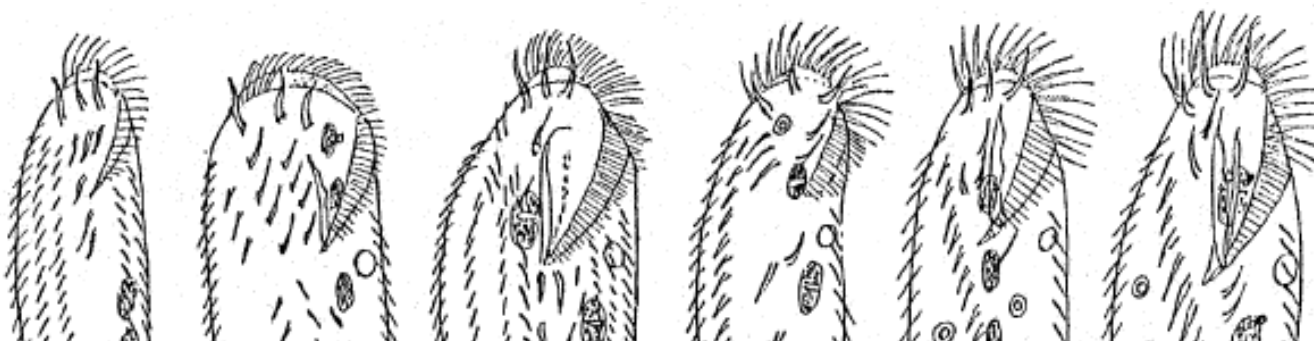
*Urostyla vernalis* 30.

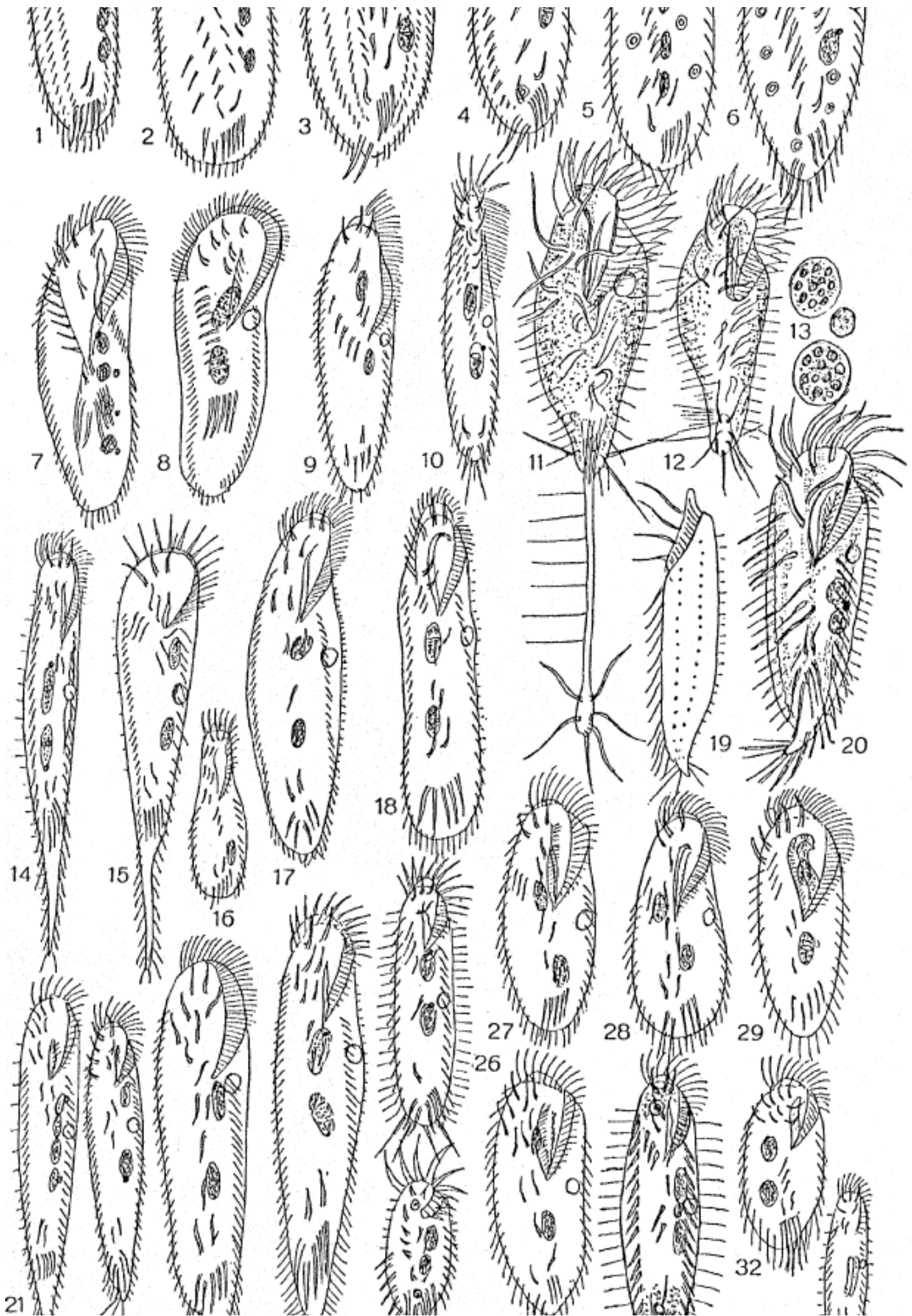




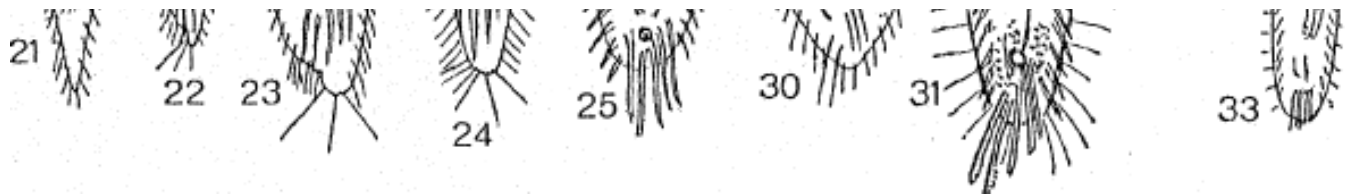
p. 584

- Keronopsis alpestris 1
- Keronopsis ovalis 2
- Holosticha scutellum 3
- Keronopsis monilata 4
- Holosticha algivora 5
- Holosticha viridis 6
- Paruroleptus piscis 7
- Onychodromopsis flexilis 8
- Urostyla muscorum 9
- Keronopsis gracilis 10
- Holosticha grisea 11
- Paruroleptus musculus 12
- Paruroleptus musculus var. minor 13
- Holosticha navicularum 14
- Gastrostyla pulchra 15
- Epiclintes ambiguus 16
- Holosticha manca 17
- Urostyla weissei 18
- Urostyla dispar 19
- Trichotaxis fossicola 20
- Uroleptus (?) spec. 21



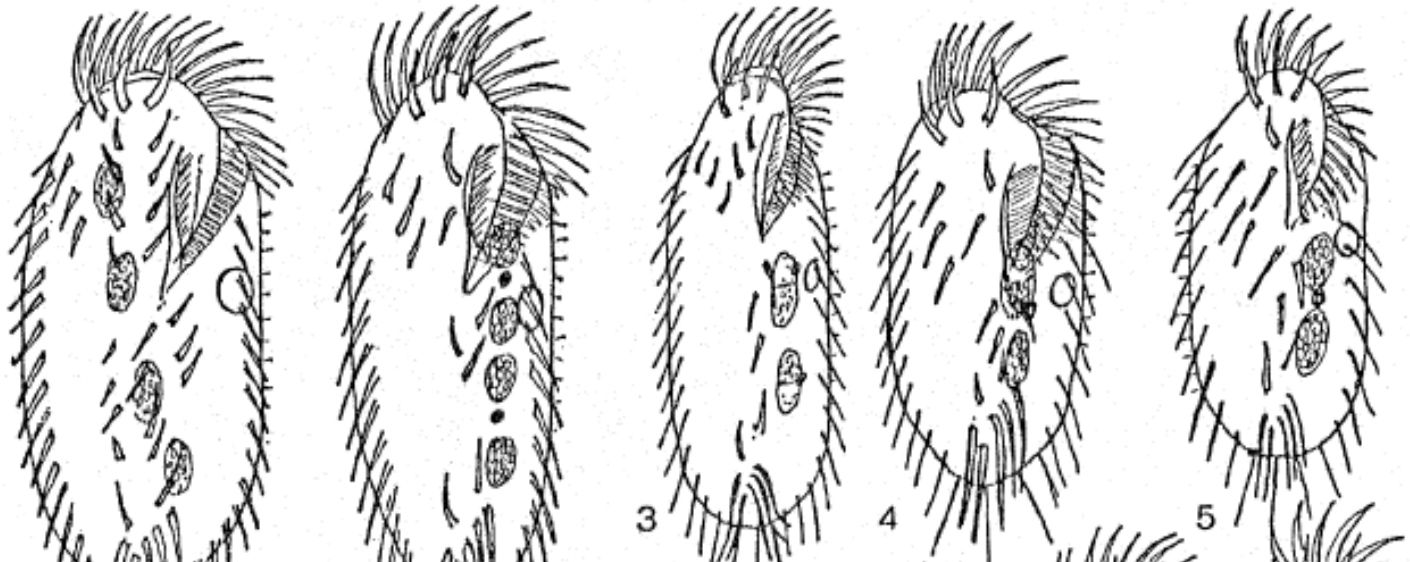


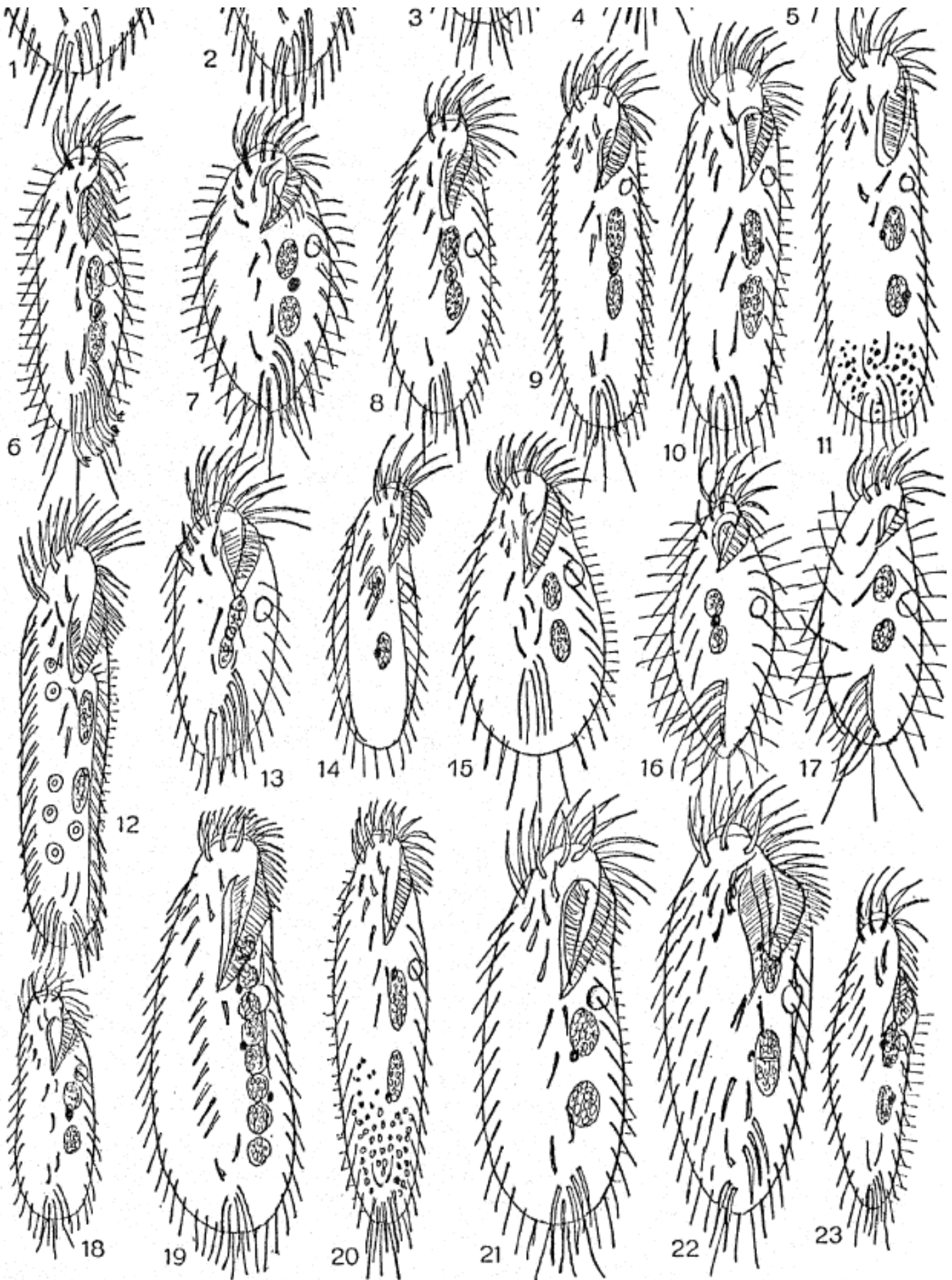




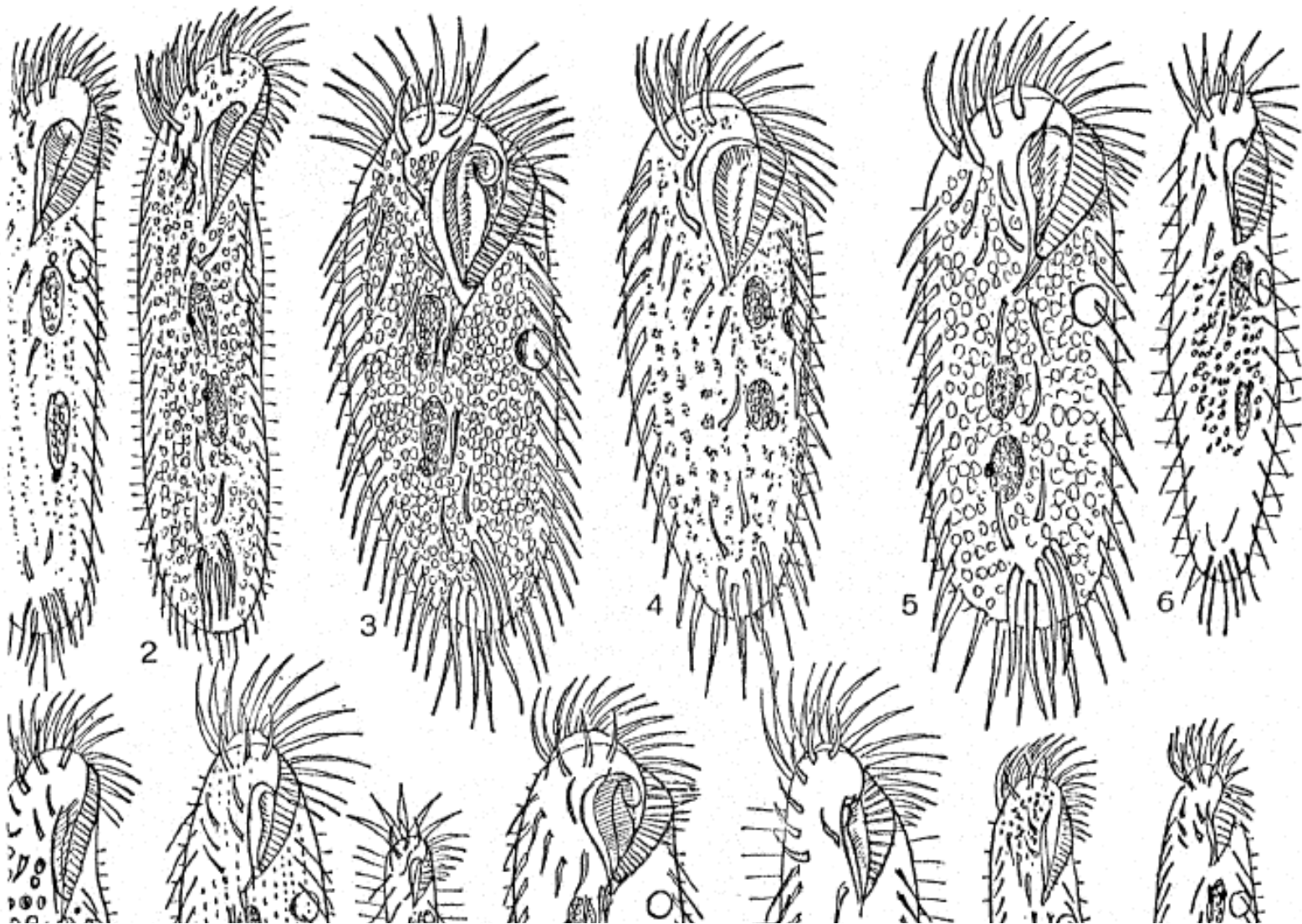
p. 594

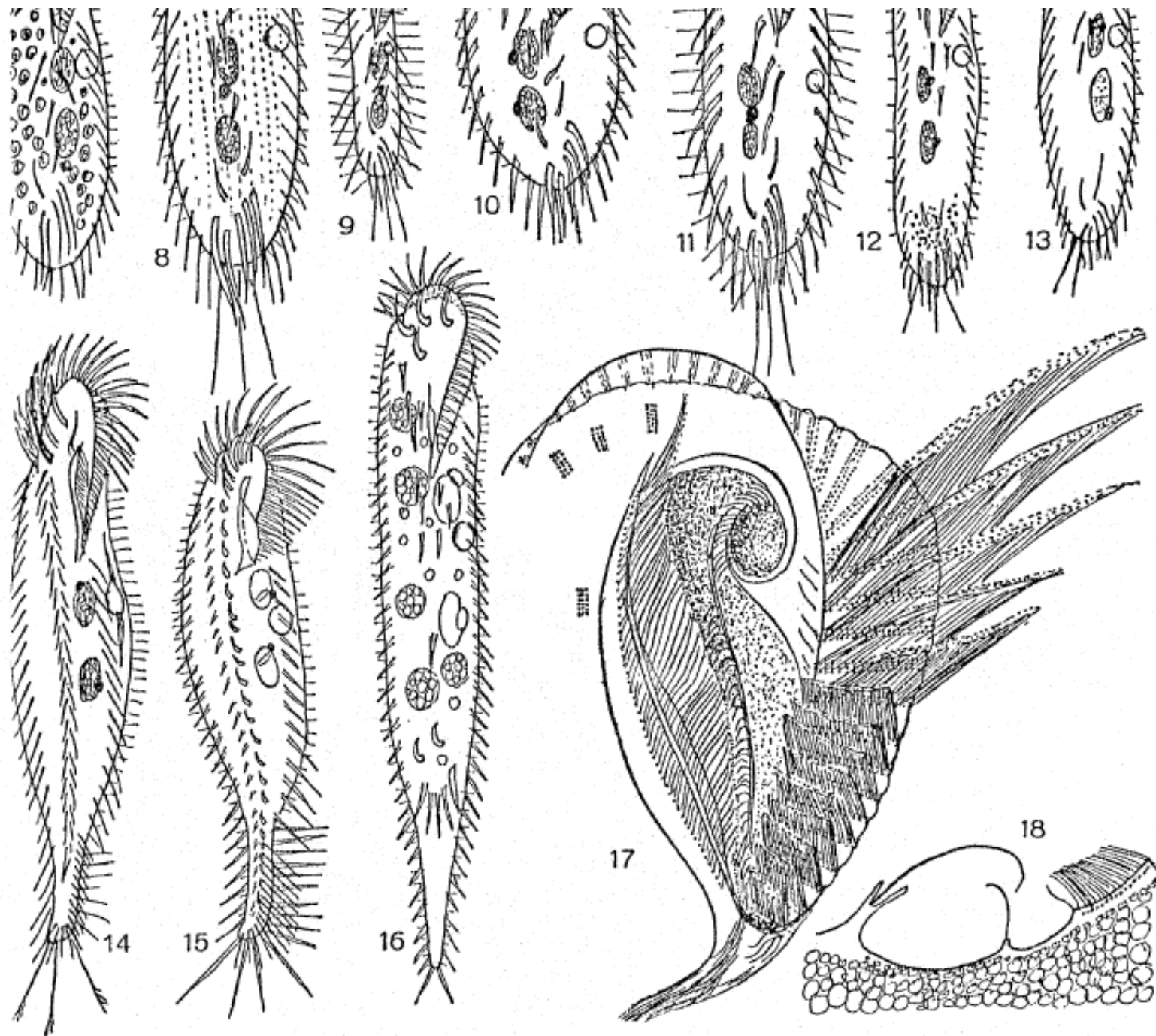
- Onychodromopsis flexilis 1
- Onychodromopsis grandis 2
- Pleurotricha grandis 3
- Pleurotricha lanceolata 4
- Gastrostyla steini 5
- Gastrostyla setifera 6
- Gastrostyla sterkii 7
- Gastrostyla pulchra 8
- Gonostomum affine 9
- Gonostomum strenuum 10
- Ancystropodium maupasi 11, 12, 13
- Urosoma cienkowskii 14
- Urosoma caudata 15
- Tachysoma parvistyla 16
- Oxytricha aeruginosa 17
- Steinia ferruginea 18
- Urosoma longicirrata 19, 20
- Urosoma (Oxytricha) acuminata 21
- Urosoma macrostyla 22
- Opisthotricha emarginata 23
- Urosoma macrostyla 24
- Actinotricha saltans 25
- Opisthotricha parallella 26
- Oxytricha hymenostoma 27
- Oxytricha fallax 28
- Steinia platystoma 29
- Oxytricha bifaria 30
- Tachysoma pellionella 31
- Oxytricha ovalis 32
- Tachysoma mirabilis 33





- Histrio similis 2
- Histrio muscorum 3
- Stylonychia muscorum spec. 4
- Stylonychia muscorum 5
- Opisthotricha crassistilata 6
- Opisthotricha euglenivora 7
- Oxytricha minor 8
- Opisthotricha halophila 9
- Steinia marina 10
- Oxytricha marina 11
- Tachysoma rigescens 12
- Oxytricha saprobia 13
- Gonostomum similar, but without transverse cirri 14
- Opisthotricha ovata 15
- Balladyna fusiformis 16
- Balladyna similis 17
- Steinia candens 18
- Gastrostyla muscorum 19
- Opisthotricha procera 20
- Steinia candens 21
- Pleurotricha spec. 22
- Gonostomum affine 23.



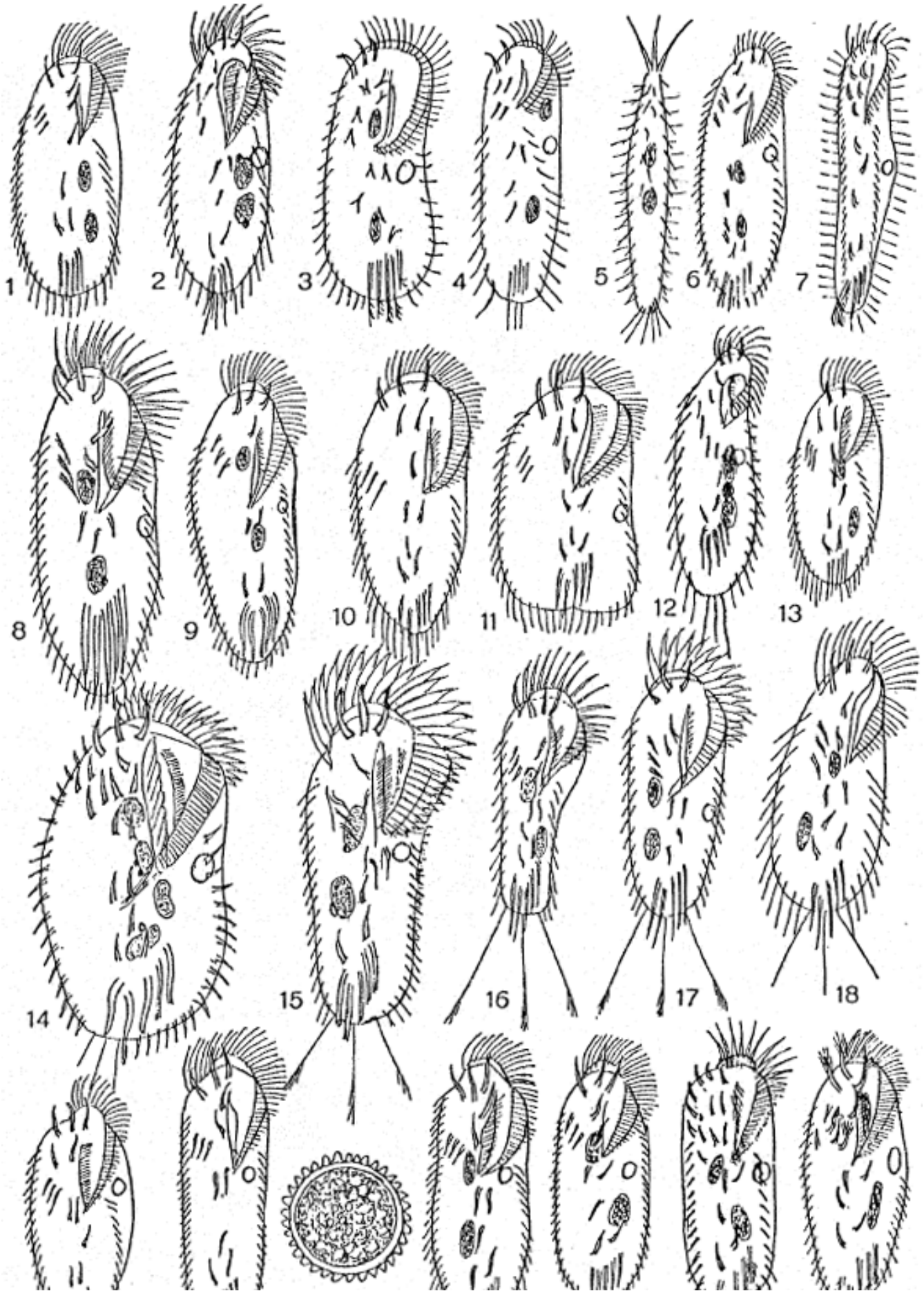


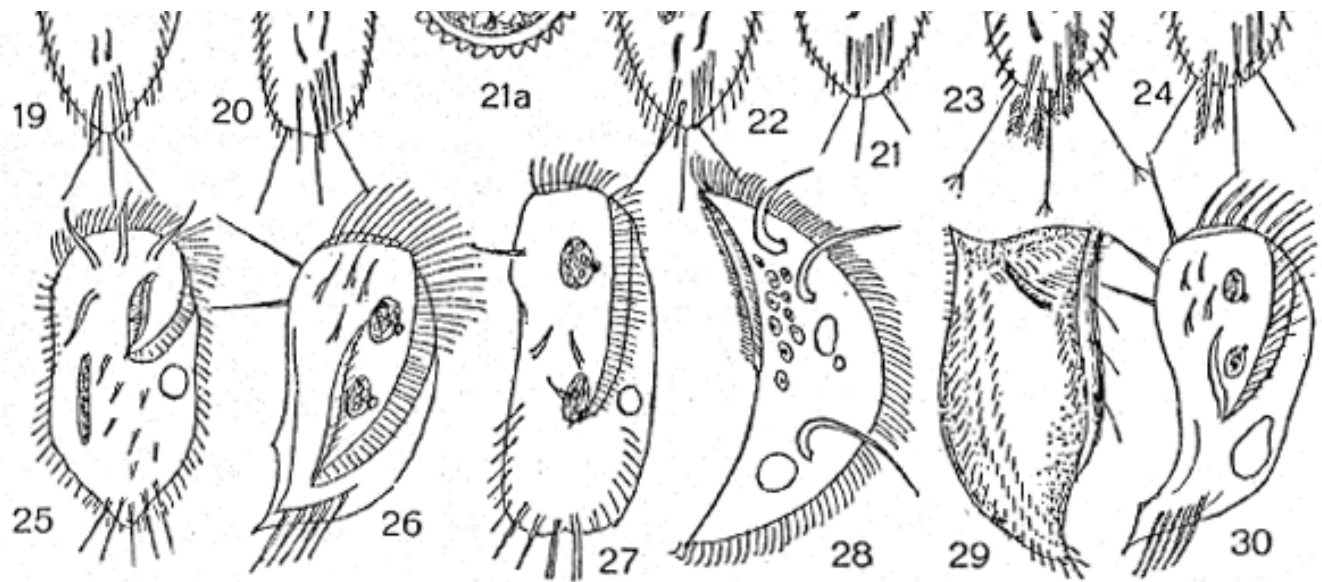
p. 610

- Steinia muscorum 1
- Steinia ferruginea 2
- Steinia platystoma 3
- Steinia inquieta 4
- Steinia candens 5
- Steinia granulata 6
- Oxytricha chlorelligera 7
- Steinia gracilis 8
- Steinia balladynula 9
- Steinia platystoma 10
- Opisthotricha muscorum 11
- Opisthotricha parallela var. minor? 12
- Opisthotricha similis 13



*Paruroleptus piscis* 14, 15  
*Urosoma cienkowskii* 16  
*Steinia platystoma*, peristome 17, 18.

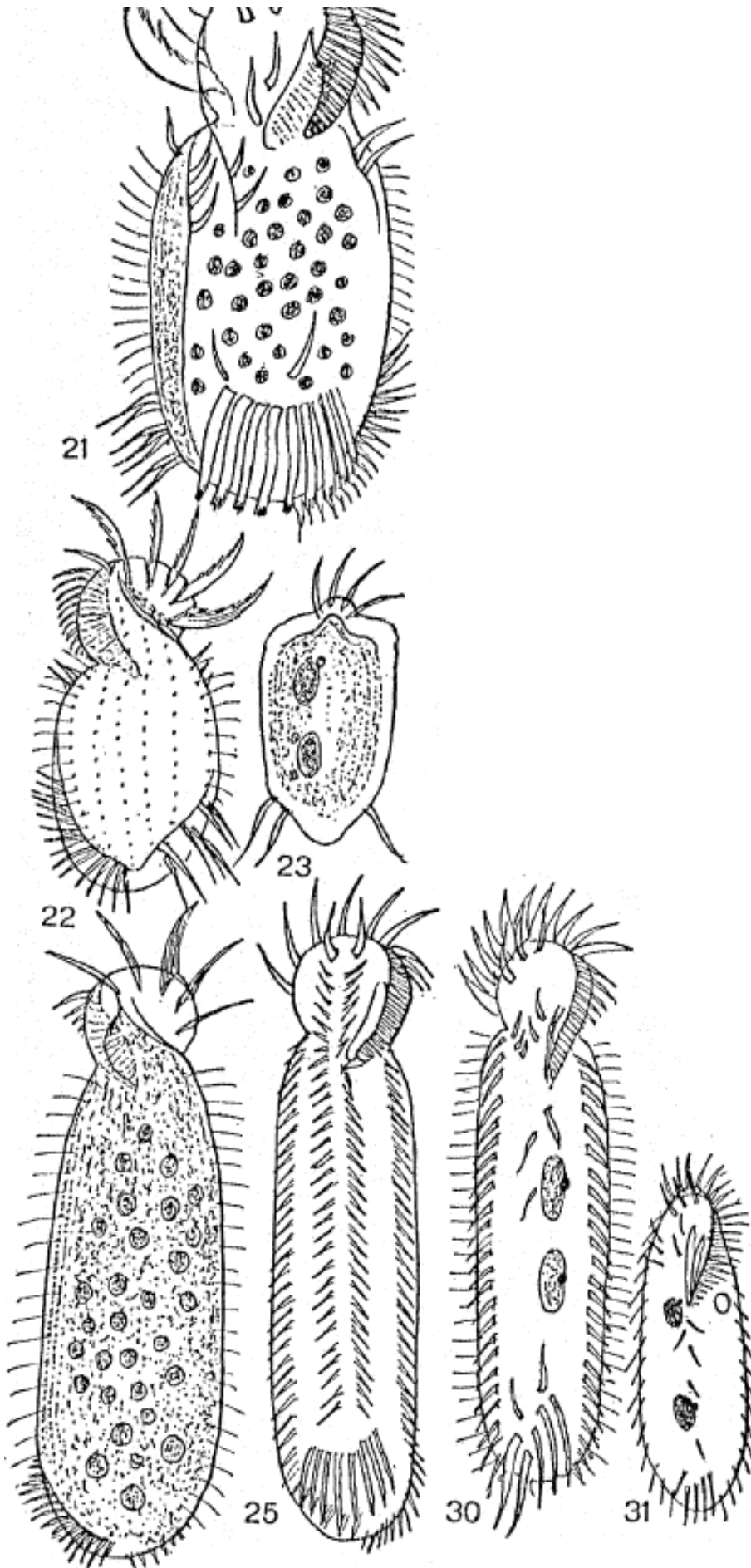




p. 616

- Oxytricha lidibunda 1
- Steinia candens 2
- Oxytricha furcata 3
- Opisthotricha elongata 4
- Oxytricha tricornis 5
- Histrio similis 6
- Tachysoma echinata 7
- Histrio erethisticus 8
- Histrio histrio 9
- Histrio sphagni 10
- Histrio vorax 11
- Steinia sapropelica 12
- Histrio complanatus 13
- Stylonychia grandis 14
- Stylonychia mytilus 15, 16
- Stylonychia pusilla 17
- Stylonychia curvata 18
- Stylonychia vorax 19
- Stylonychia putrina 20
- Stylonychia pustulata 21, 21a
- Stylonychia notophora 22
- Stylonychia fissiseta 23
- Stylonychia spec. 24
- Histrio acuminatus 25
- Dipleurostyla acuminata 26
- Prosopsenus sinuatus 27
- Drepanina falcata 28
- Monostylus heterotrichus 29
- Dipleurostyla tricornis 30.





p. 622

*Discocephalus rotatorius* 21, 22

Diophrys spec. 23  
Holosticha discocephalus 24, 25  
Oxytricha discifera 30  
Oxytricha bimembranata 31.

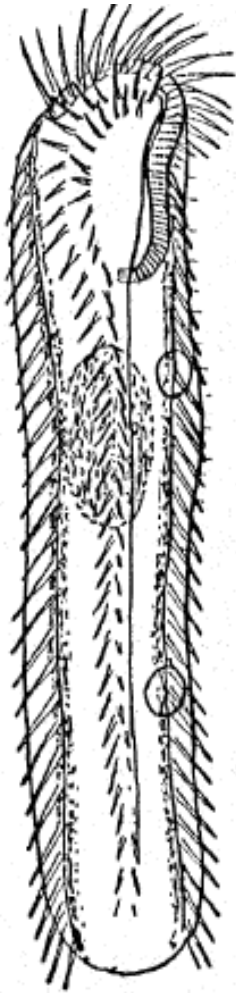


Fig. 87. *Uroleptopsis citrina*.



Fig. 91. *Kahlia costata*, ovale.

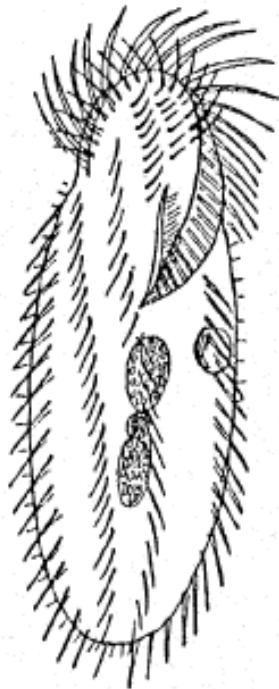


Fig. 88. *Paraholosticha herbicola*.



Fig. 89. *Paraholosticha muscicola*.

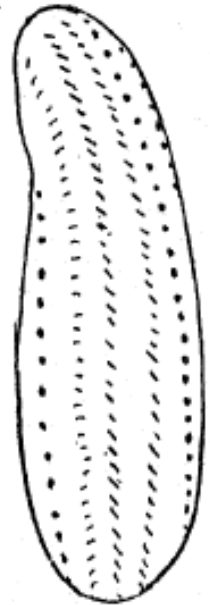
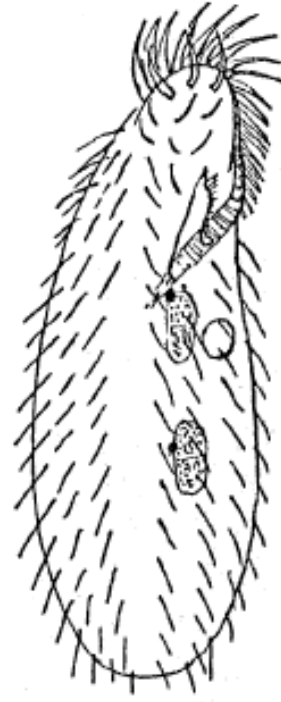


Fig. 90. *Kahlia acrobates*, vtr. und dors.

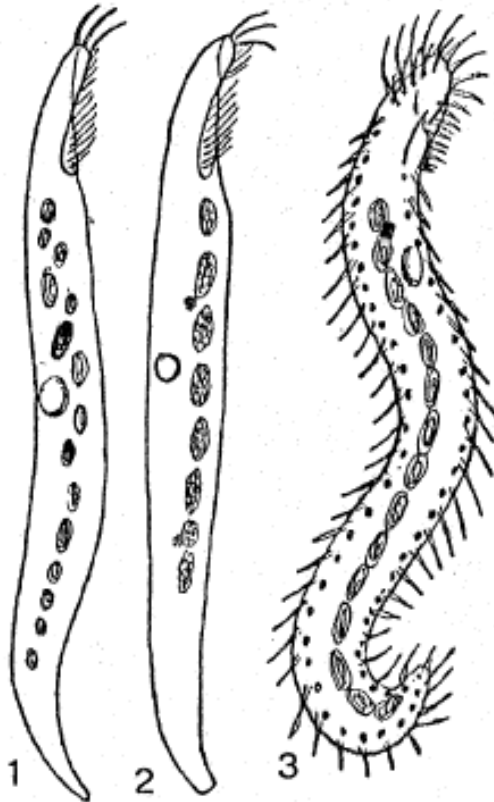


Fig. 92, 1—3.  
1 *Uroleptus halseyi* (CALKINS).

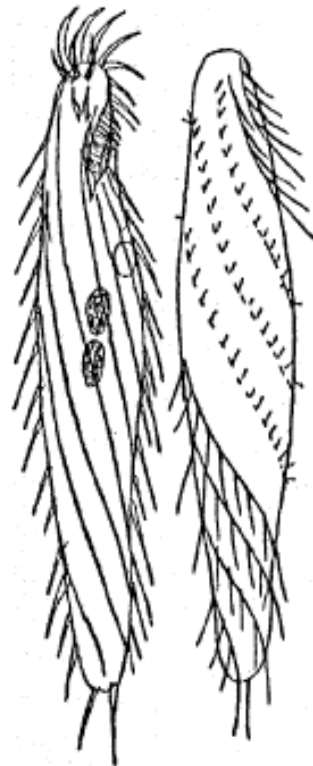


Fig. 93. *Strongylidium polystichum*, vtr. und dors.



*costata*, ovale.

1 *Uroleptus halseyi* (CALKINS).  
 2 *Ur. mobilis* var. *americanus*  
 (CALKINS). 3 *Ur. spec.*, kali-  
 fornische Moosform.

*lidium polystichum*,  
 vtr. und dors.

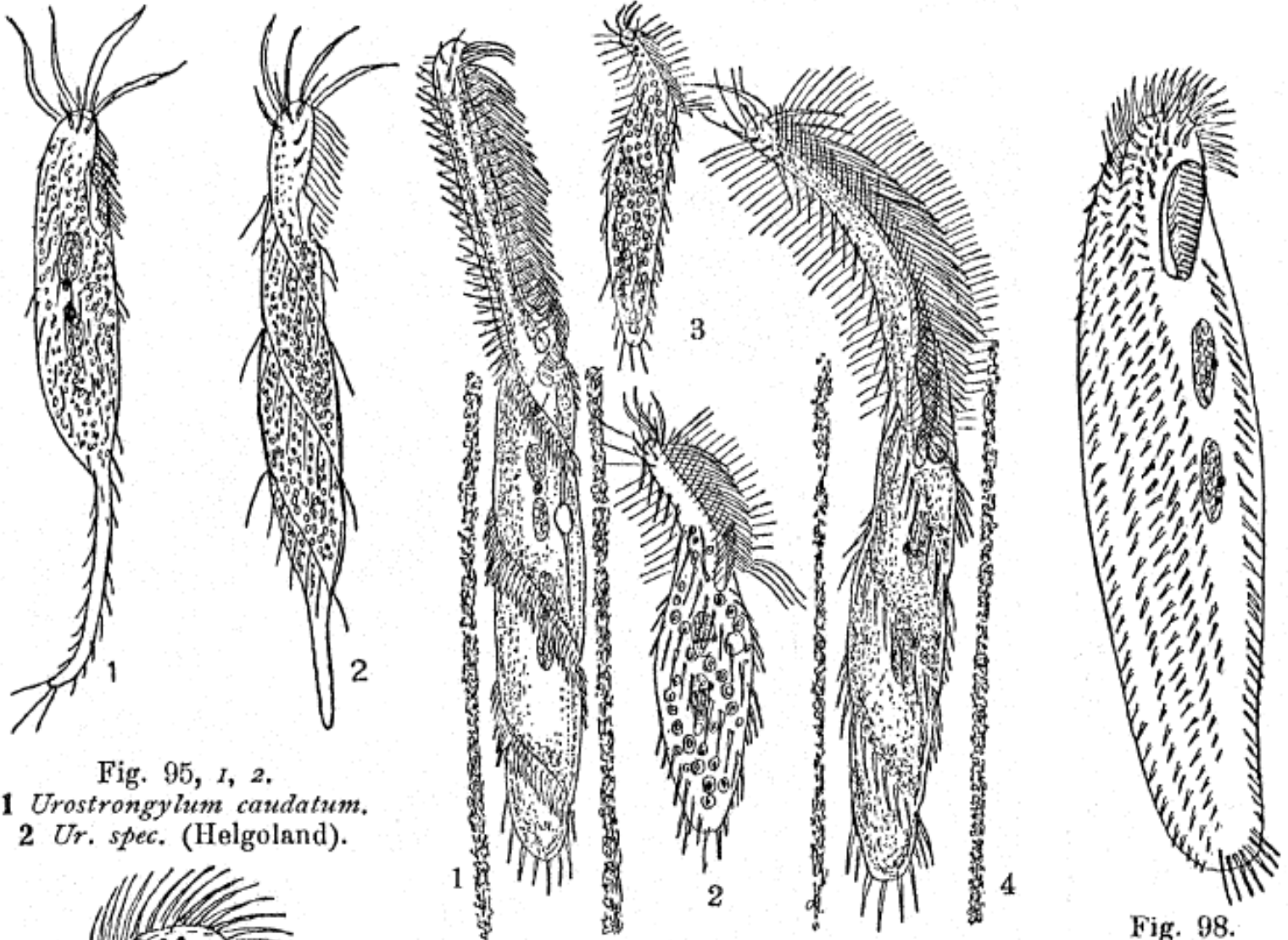
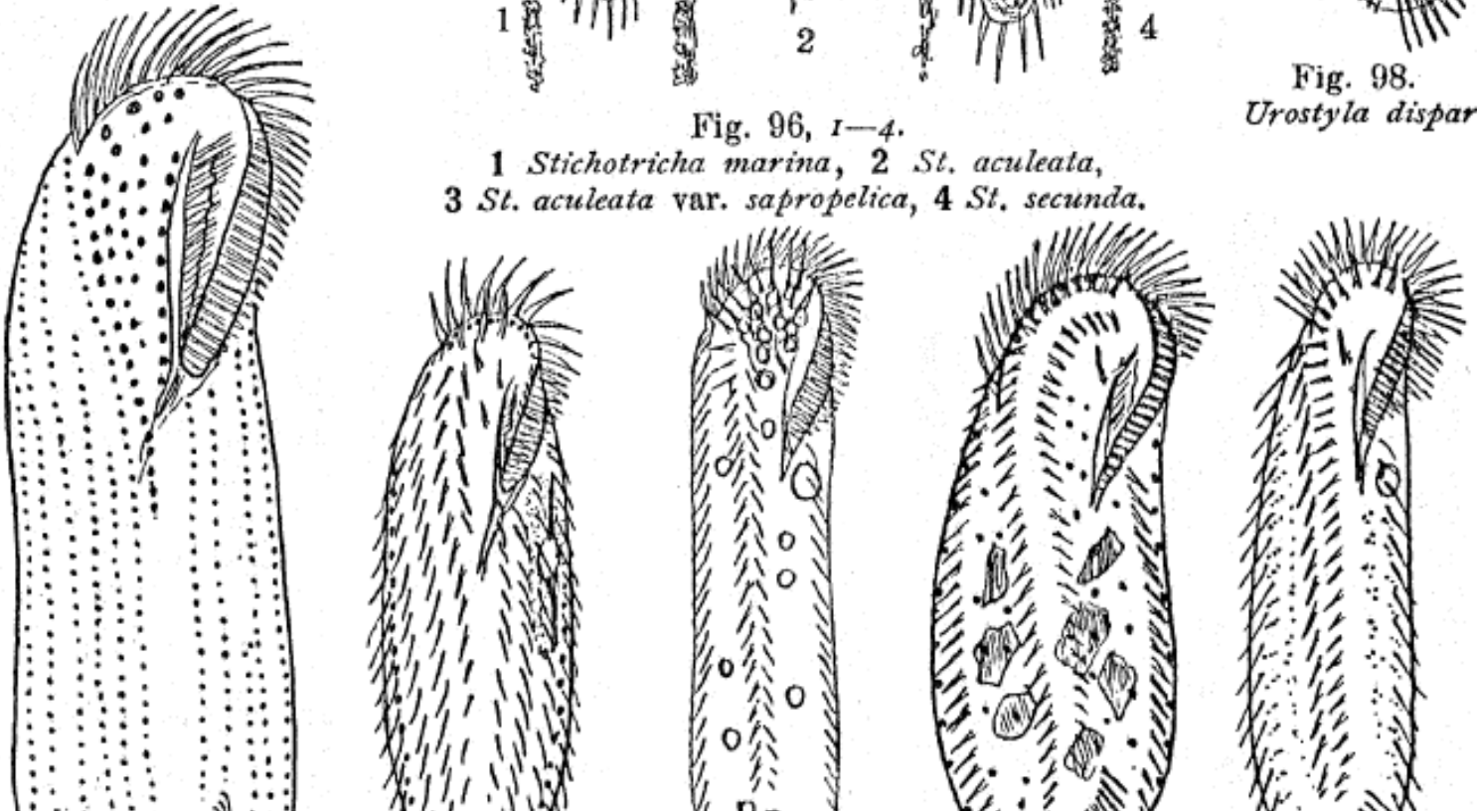


Fig. 95, 1, 2.  
 1 *Urostrongylum caudatum*.  
 2 *Ur. spec.* (Helgoland).

Fig. 96, 1—4.  
 1 *Stichotricha marina*, 2 *St. aculeata*,  
 3 *St. aculeata* var. *sapropelica*, 4 *St. secunda*.

Fig. 98.  
*Urostyla dispar*.



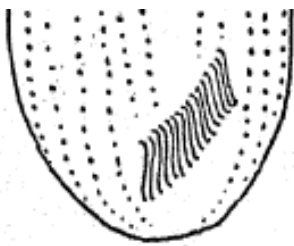


Fig. 99. *Urostyla grandis*.



Fig. 100. *Urostyla marina*.



Fig. 102. *Keronopsis globulifera*.



Fig. 103, 1, 2. 1 *Holosticha ovalis* f. *arenivora*, S. 575. 2 *Holosticha spec.*, vielleicht identisch mit *Hal. gracilis*,

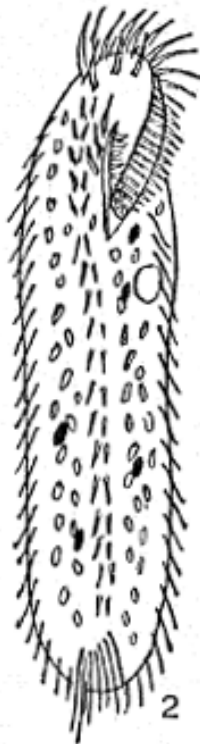


Fig. 104, 1—6.

1 *Keronopsis monilata*, Variante, 150  $\mu$ , S. 577. 2 *K. multistilata*, 250  $\mu$ , S. 574. 3 *K. monilata*, Sapropelevariante, kommt auch mit 10—12 groben Kernteilen vor, 300  $\mu$ , S. 577. 4 *K. flavicans*, 250  $\mu$ , S. 574. 5 *K. rubra* f. *heptasticha*, 200  $\mu$ , S. 571. 6 *K. flava* (COHN), 200  $\mu$ , S. 571.

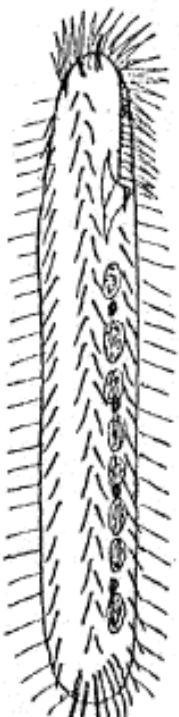


Fig. 107. *Holosticha alveo-*



Fig. 108. *Holosticha*



Fig. 109. *Holosticha arenicola*

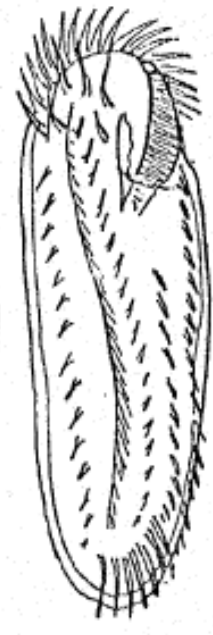


Fig. 109. 1 2



Fig. 105.  
*Holosticha*  
*extensa*.

Fig. 107.  
*Holosticha alveo-*  
*lata* (Frontal-  
cirren schema-  
tisch einge-  
zeichnet).

Fig. 108. *Holosticha*  
*milnei* (MILNE).

Fig. 109. *Holo-*  
*sticha arenicola*

1 2

Fig. 111, 1, 2.

1 *Amphisiella marioni*  
(GOURR. u. R.). 2 *Holo-*  
*sticha lacazei* (MAUPAS),  
S. 579.

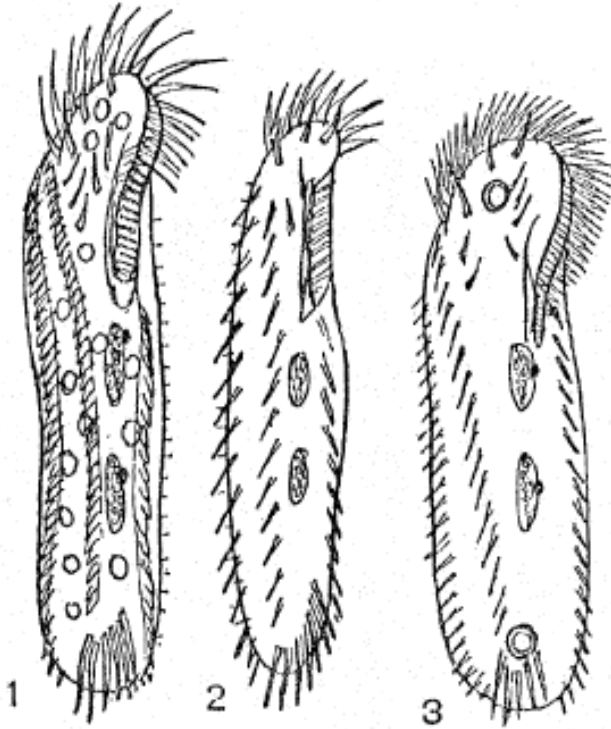


Fig. 112, 1, 2, 3.

1 *Amphisiella annulata*. 2 *A. thiophaga*.  
3 *A. milnei*.

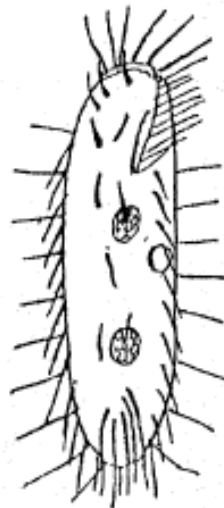


Fig. 117.  
*Oxytricha*  
*setigera*  
(STOKES).

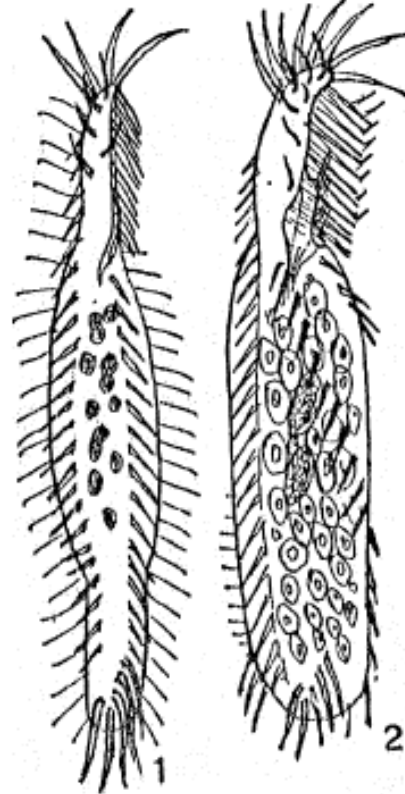


Fig. 114, 1, 2.

1 *Trachelostyla caudata*.  
2 *Tr. spec.*, abnorme Form  
von *Tr. pediculiformis*?

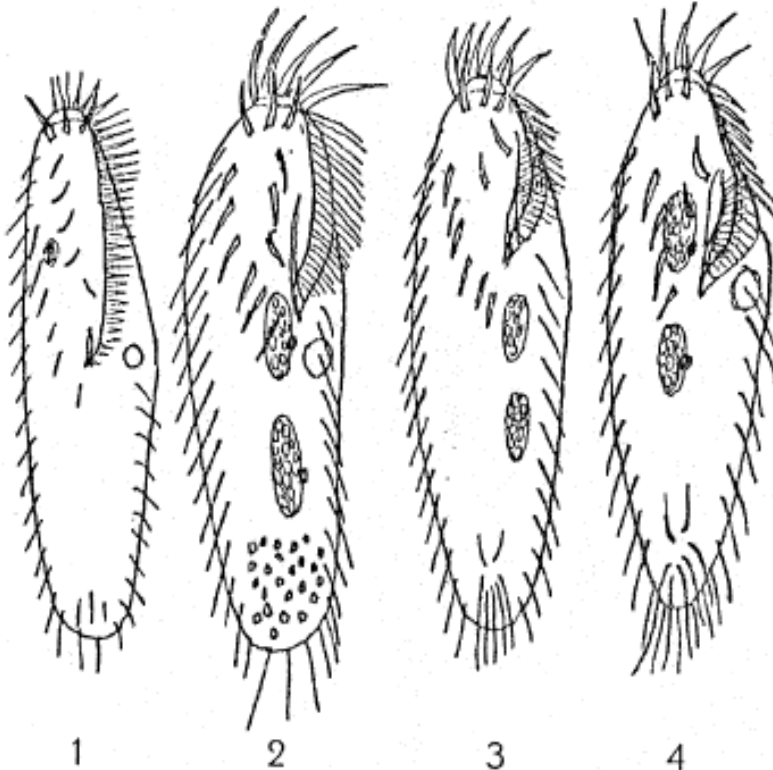


Fig. 115, 1-4.

1 *Gonostomum andoi* (SHIBUYA). 2 Moosform von  
*G. affine*, konstant ohne Trv.cirren. 3 u. 4 Weitere  
Moosformen.

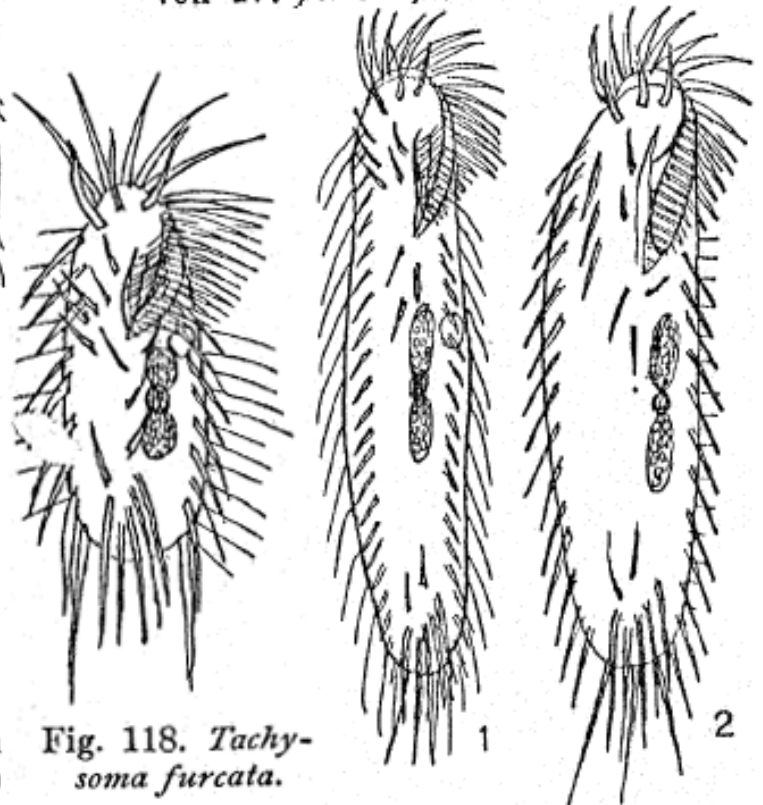


Fig. 118. *Tachy-*  
*soma furcata*.

*O. affine*, konstant ohne 1rv.cirren. 3 u. 4 weitere  
Moosformen.

*soma furcata.*

Fig. 119, 1, 2.

1 *Opisthotricha sphagni*.

2 *O. halophila*, S. 611.