

# Rolling Unit

by MARU



**The unique lightweight fold out vehicle that allows for more expandable space without compromising interior space in transport.**

**The Clever alternative** for Big, heavy expensive truck's trailers and traditional slide outs.

# Endless opportunities



BASIC TRUCK



XL TRUCK



1-IN-1 TRUCK



BASIC TRAILER



XL TRAILER



CUSTOM SOLUTIONS

# Benefits

- Up to 33 m<sup>2</sup> usable space on car trailer or chassis cab without need for big truck. Save costs in purchase and maintenance.
- Allows for more expandable space than a traditional slide-out without decreasing usable space inside.
- Can be driven on car or van license, no professional truck drivers required.
- Less back and forward logistics when compared to multiple small trailers, save time and costs.
- Excellent insulation due to sandwich panel construction – usable all year.
- Better manoeuvrability compared to long trailers or trucks.
- Shelter can be detached from vehicle – lifetime of superstructure is not limited by vehicle.
- Due to container and subframe construction can be attached to any kind of Chassis. No base vehicle dependency.
- Flush floor.
- Ease of use and reliability with no complex mechanics.
- Made from long lasting materials and hardware.
- Quick and easy set up.
- Lightweight – Long empty 3 in 1 shelter only weighs 1700 kg.
- Option of walkable roof.
- Highly customizable.
- Eye catching and innovative product.
- When not used small footprint on parking lot.



## Space

Three times the space of a standard solution

- 25 m<sup>2</sup> of workspace
- Higher capacity
- Various opportunities for use



## Comfort

The look and functionality as requested by you

- Weatherproof up to -20 °C
- Great ventilation
- Easier access



## Mobility

15 min setup time

- Use your own car to transport the trailer
- Customisable for various towing vehicles
- Suitable for category B vehicles
- Certified and compliant

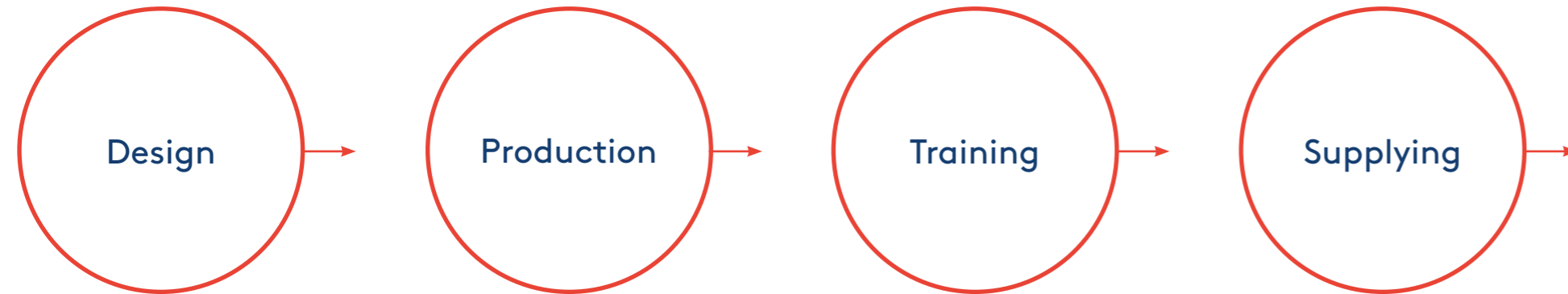


## Return on investment

The least expensive way to expand your business

- Increases service coverage
- Low maintenance costs
- A different and eye-catching marketing vehicle

# We help turn your idea into a final product



8

## Why us?



### **Customer satisfaction**

- Flexibility
- Reliability
- Speed and accuracy



### **Manufacturing capacity and technology**

- 2500 m<sup>2</sup> of production space
- Modern equipment
- Customised production facility



### **Competence and experience**

- 10 years in business
- Experience in the military, rescue and medical fields
- Highly qualified team

9

# Basic truck

The Rolling Unit Basic truck can be a 2 in 1 or 3 in 1 solution. Shelter length can vary from 4 m to 5,7 m. Expansion length is 3,8 m and 1,9 m wide. Additional separation walls can be added to form separate rooms. Automated levelling system is always included on the basic truck.

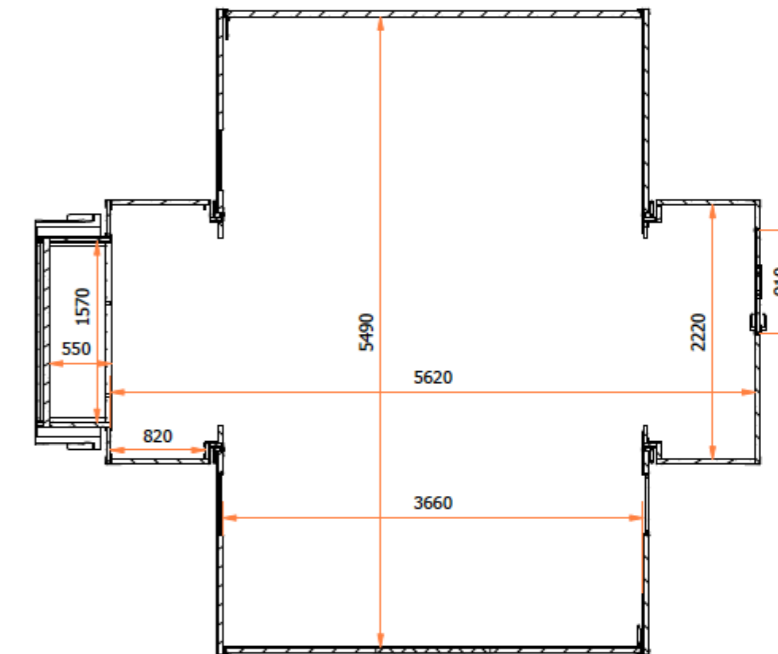


Scan to watch video



## The 3-in-1 shelter

Gross vehicle weight:	3500 – 7200 kg
Load capacity:	up to 2600 kg
Weight of Shelter:	1400 – 1700 kg
Total length of shelter:	5706 mm
Height:	3000 – 3200 mm
Insulation:	40 – 80 mm
Width in transport:	2312 mm
Width when opened:	5852 mm
Floor area in transport:	~9 m <sup>2</sup>
Floor area when expanded:	~24 m <sup>2</sup>
Additional information:	4 windows, frosted glass, lightweight stairs, aluminium external door with standard lock





# XL truck

When expanded the unit offers 33 m<sup>2</sup> of expandable space on a Iveco Daily chassi. Additionally it offers an extra high ceiling with minimal internal height of 2,2 m. It is the best solution if you need maximum square meters combined with a 2,5-t load capacity. A better value for the money solution, with less than half the carbon print of a full semi-trailer. Additional separation walls can be added to form separate rooms.



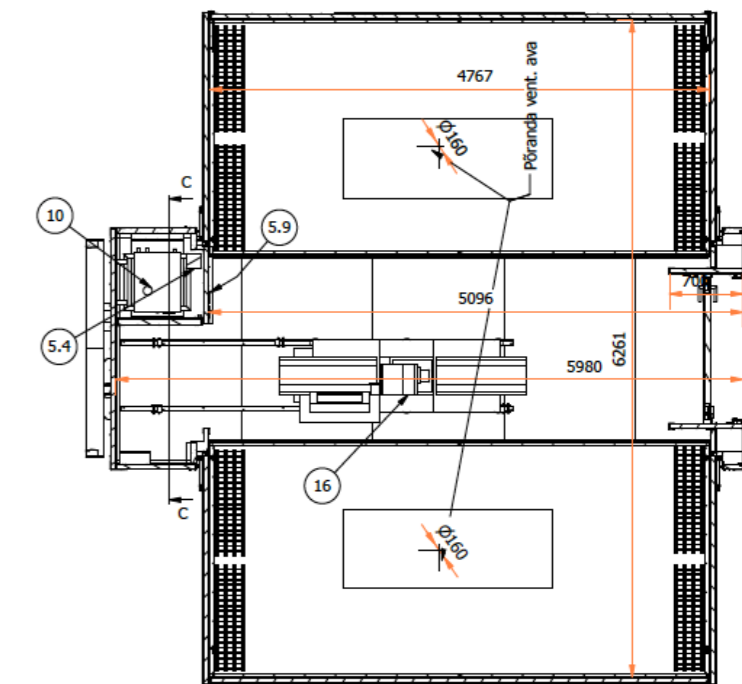
Scan to  
watch video

14



## The truck

Gross vehicle weight:	7200 kg
Load capacity:	up to 2600 kg
Weight of Shelter:	2500 kg
Total length of shelter:	6000 mm
Height:	3300 mm
Insulation:	50–80 mm
Width in transport:	2312 mm
Width when opened:	6000 mm
Floor area in transport:	~10 m <sup>2</sup>
Floor area when expanded:	~33 m <sup>2</sup>
Additional information:	4 windows, frosted glass, lightweight stairs, aluminium external door with standard lock



15





# Basic 1-in-1 truck shelter

Sometimes expansion is not required, we can use our technology and know-how to produce nonexpanding lightweight shelters. Still you get the benefit on excellent insulation and subframe construction which will outlive the vehicle.



Scan to  
watch video



## The 1-in-1 shelter

Tare weight:	950 kg
Total length of shelter:	6350 mm
Width of shelter:	2310 mm
Internal height:	2200 mm
Height of shelter from ground:	~3250 mm
Insulation:	40-80 mm
Floor area:	~12 m <sup>2</sup>
Additional information:	stairs, aluminium external door with standard lock



# Basic trailer

Most flexible and cost-effective solution as you don't need a dedicated vehicle, can be towed by a car SUV or a van that you already have. Doesn't require truck driver's license, BE category is only needed. It has a carrying capacity of 1300 kg and 9 m<sup>2</sup> space for equipment in transport mode. Load all your equipment into the trailer, drive on site, expand and start working in the spacious comfortable 24 m<sup>2</sup> environment. Manual levelling legs are included.



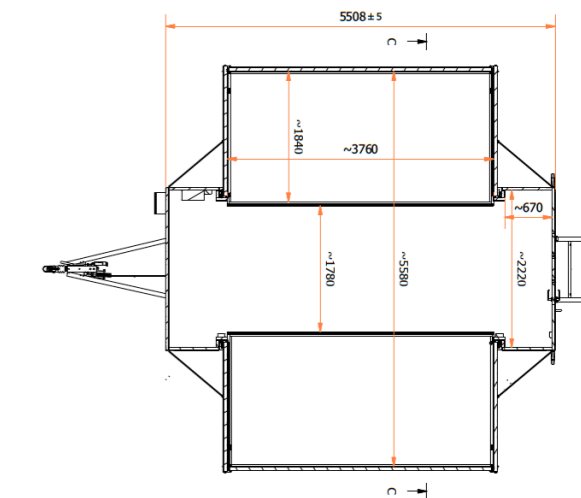
Scan to watch video



## The trailer

Gross trailer weight:	3500 kg
Tare weight of trailer:	2200 kg
Total length of trailer:	7200 mm
Total width of trailer:	2300 mm
Platform surface area:	5500 x 2300 mm (length x width)
Axis:	torsion 2 x brake (a '1800 kg)
Brakes:	4 x drum brakes
Coupling head:	60 mm ball attachment
Support legs:	4 support legs in corners, height adjustable to max 356 mm
Total length of shelter:	5706 mm
Height of trailer:	3000 mm
Insulation:	40 – 80 mm
Width of shelter in transport:	2312 mm

Width when opened:	5852 mm
Floor area in transport:	~9 m <sup>2</sup>
Floor area when expanded:	~24 m <sup>2</sup>
Additional information:	2 windows, lightweight stairs, aluminium external door with standard lock





# XL trailer

The XL trailer offers enormous 30 m<sup>2</sup> still on BE license which like the basic model it still can be towed with van, bigger SUV or pick-up truck. It has a carrying capacity of 400 kg and 9 m<sup>2</sup> space for equipment in transport mode.



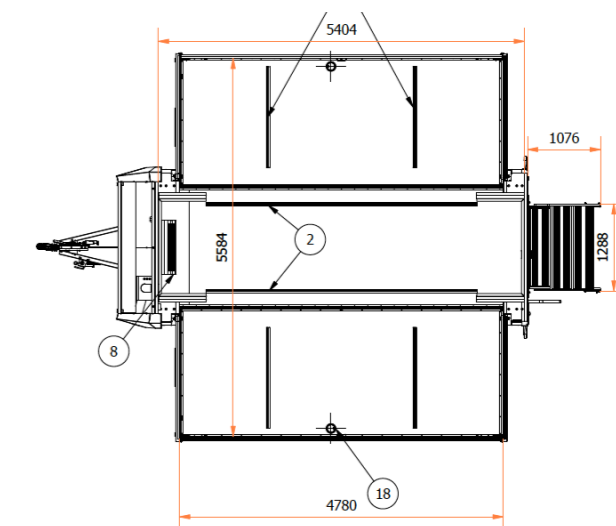
Scan to watch video



## The trailer

Gross trailer weight:	3500 kg
Tare weight of trailer:	2300 kg
Total length of trailer:	7200 mm
Total width of trailer:	2300 mm
Platform surface area:	5500 x 2300 mm (length x width)
Axis:	torsion 2 x brake (a '1800 kg)
Brakes:	4 x drum brakes
Coupling head:	50 mm ball attachment
Support legs:	4 support legs in corners, height adjustable to max 356 mm
Total length of shelter:	5706 mm
Height of trailer:	3000 mm
Insulation:	50 – 80 mm
Width of shelter in transport:	2312 mm

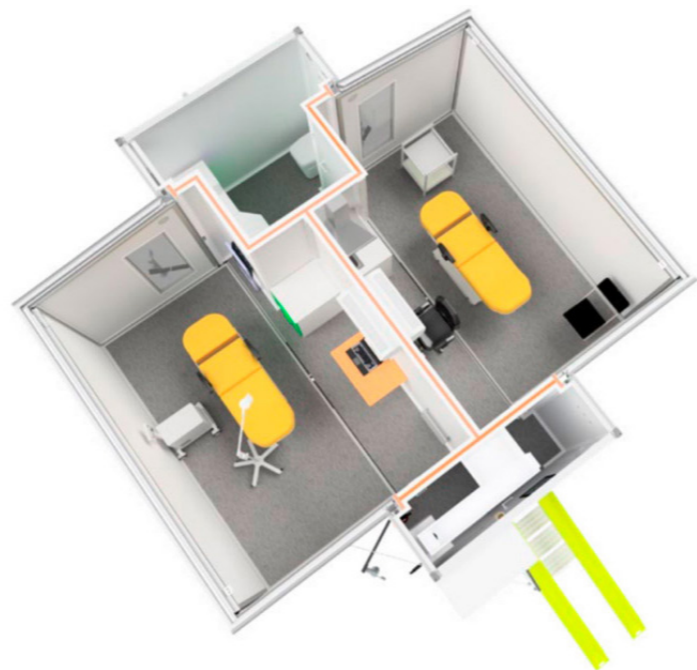
Width when opened:	5852 mm
Floor area in transport:	~9 m <sup>2</sup>
Floor area when expanded:	~30 m <sup>2</sup>
Additional information:	2 windows, lightweight stairs, aluminium external door with standard lock





# Tartu University Hospital Cancer Screening Trailers

Tartu University Hospital is using two of our trailers as cancer-screening vehicles. They have been in operation since 2016 and have traveled over 100 000 km with minimal standard maintenance required in that time. Tartu University has relied on Rolling Unit's reliability in weather -20°.





# ABC Kompuuter Mobile Photo Finish and Time Measuring Truck

Rolling Unit customer ABC Kompuuter needed a modern solution to replace an old bus that was retrofitted to measure race times. The bus had several disadvantages from insulation in extreme weather, costly maintenance, and outdated look and functionality. To bring ABC Kompuuter's operation up to date, Rolling Unit's custom shop worked to outfit the new vehicle with our unique insulation, ample space, extra workspaces, attractive look, along with additional customised rooms for rest and shower. This was all achievable for our client with the 3-in-1 Rolling Unit truck.



# Estonian Biathlon Association Ski-service Truck

3-in-1 XL Truck mounted on an Iveco Daily chassis to form a unique ski-service vehicle that rivals facilities employed by top national teams. A better value for the money, with less than half the carbon print of a full semi-trailer.

The internal height minimum 2,2 m allows for that even that the longest cross country skies can be stored in an upright position in the unit. Additionally, the layout is flexible and can be rearranged for different tasks.



# Qvalitas Mobile Health Clinics

Qvalitas Mobile Health Clinics serve as mobile eye clinics with added vaccination capabilities. Qvalitas trucks were in the forefront of the vaccination efforts in Estonia during 2021.



# Synlab Medical Trailers

Synlab's medical trailers are used for PCR tests and antibody tests. Thanks to the mobile nature of the testing facilities they can be deployed where an infectious hot spot occurs. Thanks to being a separate trailer, auxiliary operations can remain infection free. Due to expanded nature of the trailer distance requirements can be achieved easily.





**OÜ MDSC Systems**  
Järvevana tee 5  
10132 Tallinn, Estonia  
[www.rollingunit.com](http://www.rollingunit.com)

Phone: +372 650 8820  
[info@rollingunit.com](mailto:info@rollingunit.com)

MDSC Systems OÜ specialises in designing and manufacturing mobile and relocatable solutions for military, rescue and medical use. We began as an affiliate of AS Maru Metall and have been operating independently under the name of MDSC Systems OÜ since 2015.

TYPE:  TRUCK/TRAILER  2-IN-1 (15 M<sup>2</sup>)  3-IN-1 (25 M<sup>2</sup>)  CUSTOM SOLUTION



NAME:		COMPANY:	
PHONE:		MAIL:	
PURPOSE:		NEEDS:	



