

KÄRCHER

STOP

STOP

KÄRCHER
Professional

KÄRCHER
Professional

WN AK 818

PERFECT CARE PLUS PROFIT

Get the best out of your site with Kärcher's range of gantry car washes.

PROFESSIONAL | GANTRY CAR WASHES

CONTENTS.

About Kärcher	Page 4
CW1 Gantry	Page 6
Cleaning and Care Programmes	Page 8
CW3 Standard & CW5 Gantry	Page 10
Brushes & Wheel Wash	Page 12
Dryer	Page 14
Design	Page 16
Power Foam	Page 18
Self-Service Vacuum Cleaners	Page 20
Self-Service Tower Machines	Page 22
Additional Options	Page 24
Cleaning Agents & Services	Page 26



SUSTAINABLE. CLEAN.

Everyone wants sustainable power. Simply because it's possible. As cars become increasingly environmentally friendly, so must gantry car washes. Like our CW 3 IQ Premium.

MEET THE GANTRY LINE UP.



CW1



CW3



CW5



KÄRCHER HISTORY

Alfred Kärcher – inventor and entrepreneur

Alfred Kärcher, like Robert Bosch, Gottlieb Daimler and Graf Zeppelin, was one of the inventors and entrepreneurs that Württemberg produced in such great number since the beginning of the industrial era. With the utmost commitment, he dedicated himself to bringing his ideas to life. In 1924, the then 23-year-old completed his studies at the Technical University of Stuttgart and worked first of all at his father's agency, which he later developed into an engineer's office. In 1935 he founded his own company in Bad Cannstatt, Stuttgart so that he could produce and market his own products in the field of heating technology.

Alfred Kärcher designed and built the "Kärcher salt bath furnace", among other products, for tempering steel and light metal in industry according to his own patent. In 1939, the family-owned company relocated to Winnenden, where it still has its headquarters today. By this time the company was also producing heating devices for aircraft engines and cabin heating systems. Following the Second World War, the company turned its attention to products for urgent, everyday use: round stoves, small cookers, handcarts and trailers for tractors.

Move into cleaning technology

Alfred Kärcher made his breakthrough into the cleaning technology industry in 1950 with the development of the first European hot water high-pressure cleaner (the DS 350 steam jet). The design of the water heater proved to be so pioneering that it still forms the basis of all burners today.

Like so many, Alfred Kärcher did not live to see the global success of his innovation. When he died on 17 September 1959 at the age of 58, his wife Irene took over the management of the company and steered its fortunes for three decades. Today their children Johannes Kärcher and Susanne Zimmermann von Siefert are in charge of the family-owned company in its second generation.

Internationalisation

In 1962, Kärcher founded its first foreign subsidiary in France, followed by Austria and Switzerland. Internationalisation then followed. In 1975, Kärcher opened a factory in Brazil; 10 years later, the company had founded 16 sales companies in North America, Africa, Australia and elsewhere.

By 2012, Kärcher was represented by subsidiaries in 57 countries and generating 85% of its sales abroad. With 40,000 customer service points in over 190 countries, Kärcher provides comprehensive support to its customers all over the world.





SIMPLY CLEANS.

A good car wash shouldn't be rocket science. With our CW 1 gantry car wash you'll see that with just the basics, you can still offer your customers a lot.



1 Design. The CW 1 features sleek black metal doors as standard.

As an optional extra, you can specify a bespoke colour scheme for your CW 1. The traffic light with green and amber arrows and a stop light can be installed on the left or right, as preferred.

2 The rear cover, in the same colour as the frame, conceals the technical workings for a neat and tidy appearance. This is particularly important in drive-through halls or open-air sites.

2 Roof and side brushes feature the brush material CareTouch. This ensures a gentle but effective vehicle cleaning process. Contour detection in the side brushes also ensures optimum wash results. The roof brush splash guard above the roof brush protects the ceiling of the wash hall and the upper section of the system

from the splash water produced by the rotating brushes.

4 CareTouch contoured brushes are made from a specially foamed polyethylene that is extra gentle in removing dirt from the vehicle surface.

5 Wheel washes. The disc wheel washer cleans rims gently and effectively, removing stubborn dirt such as burnt-on brake dust. High-pressure cleaning is available as an option.

6 Dryer. A fixed roof dryer with optional swiveling lamella follows the contours of the vehicle for perfect drying results. The side dryers also do the same on the vehicle sides.

CW 1 Klean!Fit

Wash height	m	2.30 / 2.60 / 2.90
-------------	---	--------------------

Technical data

Voltage	V	400
Frequency	Hz	50
Number of current phases	Ph	3
Drive-through width at mirror level	m	2.50



CLEAN CAR WITH CW3 & CW5

The configurable cleaning and care programmes for your individual site needs.

Ex-works programmes

Shampoo VehiclePro Klear!Brush reliably removes stubborn dirt and during the brush wash it prepares the water film to be broken up in the drying process.

Drying aid VehiclePro Klear!Dry is optimally suited to the different dryers in the CW3 and quickly breaks up the water film for fast drying and high throughput.

Further programmes

Active foam The powerful and intensive VehiclePro Klear!Foam active foam, developed especially for CW3 Range, reduces washing times and increases throughput.

Intensive pre-cleaning VehiclePro Klear!PreWash effectively removes insect residue and salt deposits and optimally prepares the vehicle for further cleaning.

Rim cleaner Removes robust dirt such as tyre wear, burnt-on brake dust and road salt gently and effectively.

Wax VehiclePro Klear!Glow provides good protection against external influences and creates a brilliant gloss effect.

Polish Long-lasting, glossy conservation. Protects against external influences over several months.

CW3 Standard Gantry Car Wash	CW3/1	CW3/2	CW3/3	
Wash height	mm	2100 / 2300	2400 / 2600	2700 / 2900

Technical data

Voltage	V	400
Frequency	Hz	50
Number of current phases	Ph	3
Drive-through width at mirror level	m	2.40 and 2.60
Number of current phases	Ph	3
Fresh water supply (volume)	lpm	80
Fresh water supply (pressure)	Bar	4



Thanks to the larger width at mirror and wheel washer height, our 3-brush gantry car wash CW3 is suitable for vehicles of different sizes. Vehicles with a wide track width are reliably cleaned just the same as vehicles with a narrow track width, whose wheels are easily recognised by the linear wheel washer with scissors mechanism if they are not in the middle. For optimal vehicle contour detection the side brushes are tilted or locked by up to 15° - for good cleaning results of the upper vehicle areas as well as the sills. But the best cleaning result is nothing without a good drying system. For your CW3 you have the choice of 2 dryer versions, which both follow the vehicle contour. Different high-pressure options, cleaning and care programmes, as well as our newly developed cleaning agent line Klear!Line, make an effective contribution to an optimal washing and drying experience. Various colours and designs are available for an attractive appearance.

CW5	CW5/1	CW5/2	CW5/3	
Wash height	mm	2100 / 2300	2400 / 2600	2700 / 2900

Technical data

Voltage	V	400
Frequency	Hz	50
Number of current phases	Ph	3
Drive-through width at mirror level	m	2.40 and 2.60
Number of current phases	Ph	3
Fresh water supply (volume)	lpm	100
Fresh water supply (pressure)	Bar	4 - 6



Our CW5 impresses the most discerning customers with innovative, unique functions and designs. For example, K!Brush iQ optimally cleans difficult vehicle contours segment by segment during the brush wash. K!Back iQ ensures rear cleaning with the right knock! For this the side brushes behind the vehicle are rotated 90° and then tilted 15°. K!Planet iQ and K!Wheel iQ ensure precise cleaning of the wheel rims. Deep cleaning according to the principle of an electric toothbrush follows an exact height adjustment to the wheel. You choose the design of your CW5: almost anything is possible from a variety of colour and design variants through to a completely individual design of the system. Customised high-pressure options, efficient cleaning and care programmes, contour-tracking dryer, as well as the newly developed cleaning agent line Klear!Line, complement the wash experience.

GENTLE. EFFECTIVE. PRECISE.

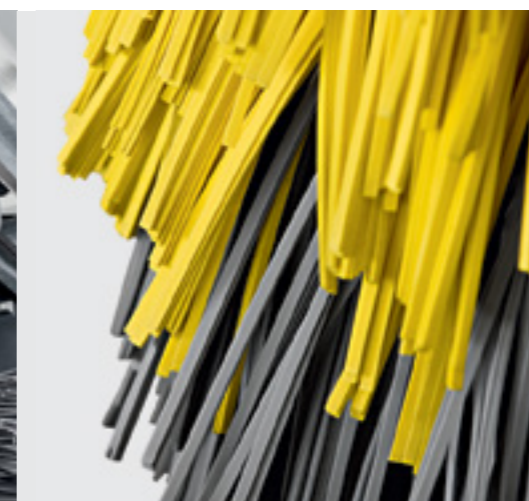
The side brushes on our CW range reliably follow the shape of the bodywork, resulting in immaculate cleaning results. The wheel wash has always been one of the greatest skills of the vehicle wash.

Gentle CareTouch consists of a specially foamed polyethylene (PE). We chose CareTouch for the roof and side brushes of our CW3 range to guarantee particularly gentle removal of dirt on the vehicle surface.

With the CareTouch Hybrid option, the lower side brushes are also equipped with PE. Alternatively, the gantry car wash can also be completely fitted with PE. And we always recommend high pressure pre-cleaning.

Precise racks permit a low-maintenance, highly precise positioning of the side brushes on the vehicle. And millimetres matter when it comes to gentle, perfect cleaning.

Contour detection In the forwards direction, the side brushes are placed at an angle of up to 15° diagonal to the vehicle so that the upper area is optimally detected and cleaned. In reverse mode, the side brushes move down accordingly to optimally clean the sill area.



Spokes in all possible shapes, deep 3D structures and all different wheel sizes pose a challenge. Stubborn dirt, such as burnt-in brake dust and encrusted gritting salt, is another. Solve both problems with our wheel washes.

No task is too big for us With our CW3 and CW5, we are introducing a completely new principle to the wheel wash: the linear scissor wheel washer. It also reaches the wheels of vehicles that are not positioned in the middle of the vehicle wash system. Even for vehicles with a narrow track width and small cars our scissor wheel washer always has a sufficient extension path.

Available as a disc wheel washer with or without high pressure, as well as a planetary wheel washer with high pressure and integrated wheelhouse cleaning.

Do more with less. Every wheel wash unit needs a highly effective rim cleaner. VehiclePro Klear!Rim removes stubborn dirt such as burnt-in brake dust, tyre wear and encrusted gritting salt intensively and in a way that protects the materials.

- Does not damage uncoated concrete floors and steel
- Surfactant in accordance with EEC 648/2004 more than 90% biodegradable
- NTA-free



CLEANLINESS IS NOT ENOUGH

The best wash result is nothing without good drying. There is a choice of two roof driers for your CW3 and CW5.

Follows the angles of the contour The $\pm 30^\circ$ pivoted roof drier follows the contours of the vehicle. The result is even better and faster drying in the front and rear area. The equipment is also available with high pressure.

Like before, only much better Our roof drier produces results thanks to its high air flow volume, requires little space and can be fitted with high pressure.

STRIKINGLY ATTRACTIVE

Show your customers at first glance that they can expect more from your CW3 and CW5 Gantry Car Wash. Lots more.

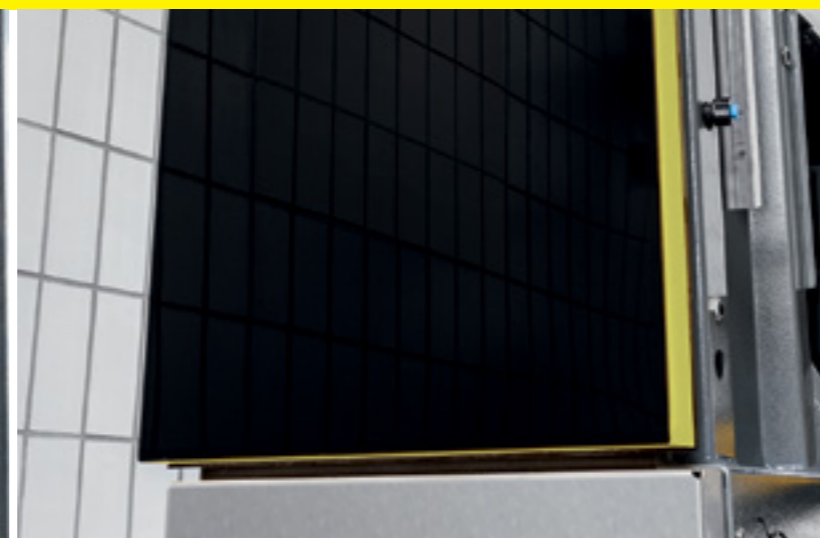
When you have free choice, your CW3 and CW5 Gantry Car Wash is highly customised. Perhaps you already like the Kärcher standard design just as it is. Or you can choose your favourite colour from four standard colours for the frame and doors. Then you can choose between two attractive front door designs

It's entirely up to your taste, functionality and budget. The basic front doors fulfil all functions required without breaking the bank. For the front doors, you can choose a large, full LED traffic

light, or alternatively, for the basic front doors, a traffic light with a green and yellow arrow and STOP. This can be positioned on the left-hand side, right-hand side or on both sides for both these versions.

Excitingly modern: K!Design Are you a fan of design? Then you'll love K!Design, the unmistakable design of advanced technology. A continuous, extensive colour style. High-quality acrylic backed with film. Exclusive Day and Night look in black or in one of four standard colours.

PROVEN. DIFFERENT. BETTER.



OUR COLOUR RANGE



The depictions of the RAL colours are not necessarily as they appear in reality.

INDIVIDUAL. PRECISE. CLEAN.

Adjustable cleaning and care programme for highly effective cleaning.

Ex-works programmes

High-Pressure Wash The high-pressure wash using warm water removes stubborn dirt, including dust, oil and grease.

Foam Wash The foam wash using warm water, brush and active foam eliminates stubborn dirt and grey film.

Rinsing Powerful rinsing with cold water eliminates cleaning agent residue and loosened dirt resulting from the high-pressure or brush wash.

Hot Wax A water-repellent, long-lasting and glossy preservative layer is applied to seal the surface.



Additional wash programmes

Top Care Osmosis water combined with liquid spray wax is applied to ensure streak-free, stain-free drying.

Dirt Removal Eliminates especially stubborn dirt in an instant.

Insect Removal Removes insect residue from the windscreen, headlights and body without leaving any remnants behind.

Additional power foam wash programmes

Power Foam Powerful against dirt. Our power foam effectively cleans your vehicle and removes both dirt and insect residue with its foaming power.

Power Rim Foam Loosens even the most stubborn residue on rims gently and without leaving any remnants behind.

POWER FOAM

Turning a vehicle wash into a show, our power foam ensures sensational foaming and perfect cleaning.

The power foam lance covers the entire vehicle in a large quantity of very effective foam in seconds. The power foam removes stubborn dirt and insect residues effectively and gently. The cleaning result is intensified for the customer through the foamy consistency and the comprehensive distribution of the power foam.

This effective washing result ensures a high level of satisfaction with the customers using your wash system and additional sales for you. The power foam lance is suitable for up to two additional programmes (Power Foam and Power Rim Foam).

Kärcher self-service cleaning agents are the ideal addition for a perfect washing process:

- Power Foam:
VehiclePro Foam Cleaner RM 838
- Power Rim Foam:
VehiclePro Klear!Rim Foam RM 802

Ease of operation is another advantage. Colourful operating instructions, programme tiles and the wash tool hoses guide the customer and facilitate operation.



IMPRESSIVE (SUCTION) POWER!

Top performance meets simple operation: our individually configurable self-service vacuum cleaner can be adapted to your local requirements – for a clean result and satisfied customers.



Maximum suction power, outstanding convenience and innovative design: the individually configurable SB VC self-service vacuum cleaner ensures hassle-free operation and the simplest service.

Tact automatic filter cleaning Saves time and money. With our patented Tact filter cleaning, you can vacuum at full power for longer and don't have to replace the filter as frequently. Tact also extends the service life of the filter and turbine.

Convenient hose recovery The fibreglass pole minimises contact with the ground, protecting the hose and preventing dirt getting into the vehicle. The hose can also be changed quickly and cost-effectively at any time.

Ergonomic suction nozzle By using the ergonomic suction nozzle, your customers can achieve outstanding cleaning results – in joints, gaps and on all surfaces.

POWERFUL. CONVENIENT.

- High suction power
- Maximum convenience
- Sophisticated technical features
- Simplest service



CREATE ADDED VALUE, INCREASE PROFIT.

With Kärcher forecourt units, you automatically increase the attractiveness of your site. And your income.



Air Tower

Here, your customers can check and adjust tyre pressure precisely up to 8 bar.

Air Water Tower

A water dispenser is added to the Air Tower, to re-fill windscreen washer fluid or radiator water.

Perfume Tower

So your customers can neutralise unpleasant odours in their vehicle in an instant.



DON'T JUST TALK



WRB Bio water reclamation system



WRP Car Wash water reclamation system



WRP 8000

Take action. Everyone's talking about environmental protection and sustainability. This is your and our contribution.

WRB Bio water reclamation system Water treatment through natural processes using microorganisms results in outstanding reclaim water quality and saves up to 98% fresh water. Thanks to this high process efficiency and degradation capacity of the bacteria, almost all the water can be reused. Other benefits for you include compact design and lower service costs.

WRP Car Wash water reclamation system With this system you save up to 85% fresh water. It recycles oil-free waste water economically and effectively without flocculation chemicals. You can reuse the recycled water for all wash programmes. This modular and flexible system gives you the optimal solution for almost every site.

WRP 8000 The principle of physical filtration is also applied here, though in this case the particles are separated by a sand filter. All of the purified reclaim water is fed back into the circuit and fresh water is fed back into the circuit and fresh water consumption is reduced by up to 85%. Like the WRB Bio the WRP 8,000 has DIBt (German Institute for Civil Engineering) type approval for simplifying the official environmental approval process.

Technical data

	WRB 2000 Bio	WRB 4000 Bio	WRB Car Wash	WRB 8000
Reclaimed Water production	2,000 l/h	4,000 l/h	3,000 l/h	8,000 l/h
Electrical Connection	3 Ph / 400 V / 50 Hz	3 Ph / 400 V / 50 Hz	1 Ph / 230 V / 50 Hz	1 Ph / 230 V / 50 Hz
Dimension l x w x h	900 x 600 x 1,800 mm	900 x 600 x 1,800 mm	503 x 240 x 1,863 mm	610 x 610 x 1,100 mm
Weight	300 kg	400 kg	40 kg	255 kg

PERFECT WITH THE RIGHT AGENTS



VehiclePro Klear!Prewash
RM 890

VehiclePro Klear!Rim
RM 896

VehiclePro Klear!Foam
RM 892

VehiclePro Klear!Brush
RM 891

VehiclePro Klear!Glow
RM 894

VehiclePro Klear!Dry
RM 893

The Klear!Line cleaning agents for gantry car washes

Tap the full potential of your Gantry Car Wash with the innovative cleaning agents from our VehiclePro Klear!Line:

- VehiclePro Klear!Prewash RM 890
- VehiclePro Klear!Rim RM 896
- VehiclePro Klear!Foam RM 892
- VehiclePro Klear!Brush RM 891
- VehiclePro Klear!Glow RM 894
- VehiclePro Klear!Dry RM 893

When you want the best for you and your customers put your trust in our VehiclePro Klear!Line.

- Latest generation of innovative cleaning agents
- Cost-saving for perfect results in optimal washing time
- Ultra-high concentrates, extremely economical in use and maximum cost-effectiveness
- Modern formulas and selected quality raw materials
- Perfect cleanliness and care
- Innovative Kärcher perfume concept with secure colour coding

services

All angles covered: With our efficient solutions we help you achieve something great and become even better. Anywhere and anytime.

original spare parts

Strong in all parts: Our spare parts represent value preservation and the usual strong cleaning performance at the Kärcher standard.

financial solutions

Tailored financing: In cooperation with well-known leasing partners we offer a variety of individual financing solutions.

service app

24/7 availability: With the innovative Kärcher Service app, you can send all service messages quickly and precisely to Kärcher Service at any time.

service packages

Regular, professional maintenance reduces the risk of breakdown for your machine fleet, extends the service life of your machines and increases their current market value.

cleaning consulting

Increased productivity means better quality: We optimise your cleaning processes and are happy to advise you with an individual and sustainable cleaning concept.

service

At Kärcher you can take customer proximity literally: We provide expert help in the event of major faults or application problems – worldwide and at any time.

MORE INFORMATION

Our support for your success: we are your reliable partner when it comes to cleaning.

More information about our top services can be found at karcher.com.au or karcher.co.nz

KÄRCHER



makes a difference

Please contact us for more information:

Australia

Kärcher Pty Ltd
385 Ferntree Gully Road
Mount Waverley
Victoria, AU 3149

Phone 1800 675-714
03 9765 2322

karcher.com.au

New Zealand

Kärcher Ltd
66 Allens Road
East Tamaki
Auckland 2013

Phone +64 9-274-4603
Fax +64 9-274-6932

karcher.co.nz