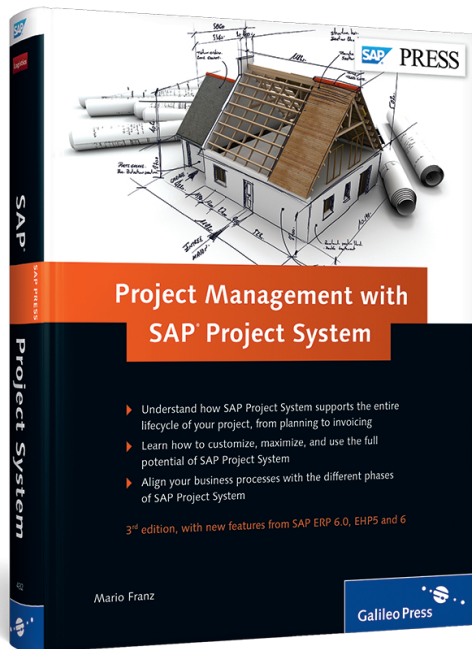


Mario Franz

Project Management with SAP® Project System



Galileo Press®

Bonn • Boston

Contents at a Glance

1	Structures and Master Data	17
2	Planning Functions	131
3	Budget	261
4	Project Execution Processes	289
5	Period-End Closing	365
6	Reporting	437
7	Integration Scenarios with Other Project Management Tools	493
A	B APIs in SAP Project System	519
B	Enterprise Services of SAP Project System	523
C	Selected Project System Database Tables	527
D	Transactions and Menu Paths	529
E	The Author	551

Contents

Introduction	13
1 Structures and Master Data	17
1.1 Basic Principles	18
1.1.1 Overview of Project Structures	18
1.1.2 Access Control Lists	22
1.2 Work Breakdown Structure	23
1.2.1 Structure and Master Data	25
1.2.2 Structure Customizing of the Work Breakdown Structure	36
1.2.3 Standard Work Breakdown Structures	44
1.3 Network	46
1.3.1 Structure and Master Data	46
1.3.2 Customizing the Structure of the Network	59
1.3.3 Standard Networks	67
1.4 Milestones	69
1.4.1 Milestones Assigned to WBS Elements	69
1.4.2 Milestones Assigned to Activities	71
1.5 Documents	74
1.5.1 PS Texts	74
1.5.2 Integration with Document Management	75
1.6 Status	76
1.7 Editing Functions	81
1.7.1 Project Builder	82
1.7.2 Project Planning Board	87
1.7.3 Special Maintenance Functions	92
1.7.4 Project Editor	94
1.7.5 Editing Customer Projects	100
1.8 Tools for Optimized Master Data Maintenance	102
1.8.1 Field Selection	102
1.8.2 Flexible Detail Screens and Table Controls	103
1.8.3 Mass Change	105
1.8.4 Substitution	107
1.8.5 Validation	109

1.8.6	Variant Configurations with Projects	111
1.8.7	Assembly Processing	114
1.9	Versions	120
1.9.1	Project Versions	121
1.9.2	Simulation Versions	123
1.10	Archiving Project Structures	126
1.11	Summary	130

2 Planning Functions 131

2.1	Time Scheduling	132
2.1.1	Scheduling with WBS Elements	134
2.1.2	Scheduling with Networks	138
2.1.3	Scheduling with the Project Editor	154
2.2	Resource Planning	157
2.2.1	Capacity Planning with Work Centers	158
2.2.2	Workforce Planning	166
2.2.3	Capacity Leveling	173
2.2.4	External Processing	176
2.2.5	Service	180
2.3	Material Planning	183
2.3.1	Assigning Material Components	183
2.3.2	Project Stock	203
2.3.3	Availability Check	208
2.4	Planning Costs and Statistical Key Figures	212
2.4.1	Hierarchical Cost Planning	216
2.4.2	Unit Costing	219
2.4.3	Detailed Planning	223
2.4.4	Easy Cost Planning	227
2.4.5	Project Planner and Cost Estimator	234
2.4.6	Network Costing	237
2.4.7	Planned Costs of Assigned Orders	245
2.4.8	Planning Statistical Key Figures	247
2.5	Revenue Planning	249
2.5.1	Hierarchical Planning	250
2.5.2	Detailed Planning	250
2.5.3	Billing Plan	251
2.5.4	Sales Pricing	254
2.6	Summary	259

3	Budget	261
3.1	Budgeting Functions in SAP Project System	262
3.1.1	Original Budget	263
3.1.2	Budget Updates	267
3.1.3	Budget Release	270
3.1.4	Budget Carryforward	272
3.1.5	Availability Control	273
3.2	Integration with Investment Management	280
3.3	Summary	288
4	Project Execution Processes	289
4.1	Actual Dates	290
4.1.1	Actual Dates of WBS Elements	290
4.1.2	Actual Dates of Activities	291
4.1.3	Actual Dates of Milestones	294
4.2	Account Assignment of Documents	294
4.2.1	Commitments Management	295
4.2.2	Manual Account Assignment	298
4.2.3	Execution Services	299
4.3	Confirmations	302
4.3.1	Individual Confirmations	309
4.3.2	Collective and Summary Confirmations	310
4.3.3	Cross-Application Time Sheet	312
4.3.4	Additional Confirmation Options	317
4.4	External Procurement of Services	317
4.4.1	External Processing	317
4.4.2	Service	320
4.5	Material Procurement and Delivery	322
4.5.1	Material Procurement Processes	322
4.5.2	Delivery from Project	330
4.5.3	ProMan	332
4.6	Billing	336
4.6.1	Milestone Billing	337
4.6.2	Resource-Related Billing	339
4.7	Project Progress	343
4.7.1	Milestone Trend Analysis	343
4.7.2	Progress Analysis	345

4.7.3	Progress Tracking	355
4.8	Claim Management	359
4.9	Summary	364

5 Period-End Closing 365

5.1	Processing Types	366
5.2	Revaluation at Actual Prices	369
5.2.1	Prerequisites for Revaluation at Actual Prices	370
5.2.2	Executing the Revaluation at Actual Prices	371
5.2.3	Dependencies of the Revaluation of Actual Prices	371
5.3	Overhead Rates	372
5.3.1	Prerequisites for the Allocation of Overhead Rates	372
5.3.2	Executing the Application of Overhead	375
5.4	Template Allocations	377
5.4.1	Prerequisites for Template Allocation	377
5.4.2	Executing Template Allocation	379
5.5	Interest Calculation	380
5.5.1	Prerequisites for Interest Calculation for Projects	381
5.5.2	Executing the Interest Calculation for Projects	387
5.6	Results Analysis	389
5.6.1	Prerequisites for the Results Analysis	395
5.6.2	Executing the Results Analysis	403
5.7	Project-Related Incoming Orders	405
5.7.1	Prerequisites for Project-Related Incoming Order Determination	408
5.7.2	Executing the Project-Related Sales Order Determination	411
5.8	Cost Forecast	412
5.8.1	Prerequisites for and Restrictions of the Cost Forecast	415
5.8.2	Executing and Evaluating the Cost Forecast	416
5.8.3	Forecast Workbench	417
5.9	Settlement	420
5.9.1	Prerequisites for Project Settlements	421

5.9.2	Executing Project Settlements	430
5.9.3	Settlement of Investment Projects	432
5.9.4	Project Settlement Dependencies	435
5.10	Summary	436

6 Reporting 437

6.1	Project Information System: Structures	438
6.1.1	Structure/Project Structure Overview	443
6.1.2	Individual Overviews	448
6.2	Project Information System: Financials	451
6.2.1	Hierarchy Reports	452
6.2.2	Cost Element Reports	460
6.2.3	Line Item Reports	467
6.2.4	PS Cash Management	470
6.3	Logistical Reports	476
6.3.1	Purchase Requisitions and Purchase Orders for the Project	477
6.3.2	Material Reports	479
6.3.3	Capacity Reports	479
6.4	Project Summarization	487
6.5	Summary	491

**7 Integration Scenarios with Other
Project Management Tools 493**

7.1	Open PS for Microsoft Project	495
7.2	SAP Enterprise Project Connection	499
7.3	SAP Portfolio and Project Management (PPM)	501
7.3.1	PPM Project Management	501
7.3.2	PPM Portfolio Management	507
7.4	Summary	515

Appendices 517

A	B APIs in SAP Project System	519
B	Enterprise Services of SAP Project System	523
C	Selected Project System Database Tables	527

D	Transactions and Menu Paths	529
D.1	Structures and Master Data	529
D.1.1	Transactions in the SAP Menu	529
D.1.2	Customizing Activities	530
D.2	Planning Functions	533
D.2.1	Transactions in the SAP Menu	533
D.2.2	Customizing Activities	536
D.3	Budget	538
D.3.1	Transactions in the SAP Menu	539
D.3.2	Budgeting in Project System	539
D.3.3	Customizing Activities	540
D.4	Project Execution Processes	540
D.4.1	Transactions in the SAP Menu	540
D.4.2	Customizing Activities	542
D.5	Period-End Closing	543
D.5.1	Transactions in the SAP Menu	543
D.5.2	Customizing Activities	545
D.6	Reporting	546
D.6.1	Transactions in the SAP Menu	546
D.6.2	Customizing Activities	548
E	The Author	551
	Index	553

Within the approval phase, funds for project execution are made available through budgeting. The budget management functionality of SAP Project System enables you to monitor assigned funds and prevent budget overruns.

3 Budget

Companies often use the term *budget* very differently. It therefore makes sense to first explain what we mean by "budget" in the context in which it is used in SAP Project System, and to differentiate it from the terms *planned costs* and *actual costs*.

In the planning phase of a project, you can estimate or calculate the costs for the subsequent execution of the project and save these costs as *planned costs* for the different project objects. Depending on which form of cost planning you use for this, the planned costs in this case are stored as total values, with reference to fiscal years or individual periods, by cost element, or without any reference to a cost element. If required, you can also enter several different planned costs for the same object and store them in different Controlling (CO) versions.

Definition

You can compare the planned costs against the *actual costs* in the execution phase of a project. The actual costs correspond to the funds that are actually required to execute individual parts of the project, based on services used by the cost centers of your own company or by suppliers, materials consumed, overhead costs allocated, and so on. Actual costs are updated into SAP Project System by the account assignment of corresponding documents on project objects, and always refer to cost elements.

You document an approved cost structure for executing the different parts of the project by distributing the budget to WBS elements of a project. A project is typically budgeted in its approval phase; that is, before the project execution is even started. In SAP Project System,

Budget
distribution

budget does not refer to individual cost elements and therefore represents the approved framework for all costs of the project, including both the primary and secondary costs (an exception in this case is *exempt cost elements*). Although you can still change the budget values of a project retroactively, unlike CO versions for planning costs, there is only one relevant budget value for an object at any time.

In Reporting, you can evaluate the budget values and planned and actual costs together. After you budget a project, you generally use the *availability control* function to automatically calculate assigned *funds* for the budget of a WBS element and to prevent budget overruns. In this sense, budget is not only an approved cost structure, but also represents a binding budget for a project.

Integration with Investment Management

You can only perform budgeting and budget monitoring using the functions from SAP Project System; however, you can also use an integration of SAP Project System with Investment Management to manage budgets across projects. These two options are discussed in Section 3.1 and Section 3.2. Another option for cross-project budgeting is to integrate with SAP Portfolio and Project Management (PPM). Chapter 7 discusses PPM as well as the integration scenarios with SAP Project System.

[+]

Budget and Networks

Note that budget can only be assigned to WBS elements in SAP Project System. Networks cannot be budgeted.

However, the costs of networks or network activities, to which WBS elements are assigned, are included in the assigned funds for the budget of the WBS elements and are taken into account for the availability control.

3.1 Budgeting Functions in SAP Project System

Budget profile

Depending on your requirements, you can use different functions in SAP Project System to manage your project budgets. In this case, the management of budgets for individual projects is controlled by the budget profile in the project definition of the projects. Figure 3.1 shows an example of defining a budget profile. You can define budget profiles in Customizing of SAP Project System using Transaction OPS9 and store

them as default values in project profiles. The individual settings options for a budget profile, along with the different functions of budget management, are explained in the following sections.

Figure 3.1 Example for Defining a Budget Profile

3.1.1 Original Budget

The first step in managing a budget for a project is to allocate an *original budget* in Transaction CJ30 (see Figure 3.2). All WBS elements of a project are displayed in tables in this transaction. In the (View) BUDGET column, you can enter the values for the original budget of the individual WBS elements; however, the budgeting for a project is usually preceded by cost planning, which acts as an indicator for allocating budgets. The planned costs of the WBS elements are therefore displayed in the PLANNED TOTAL view in Transaction CJ30 and you can copy these planned costs as the original budget using the COPY VIEW function,

Transaction CJ30

which you can call from the transaction menu. You can use the percentage rate in this case to specify whether you want the planned costs to be copied completely, partially, or at more than 100%. In the transaction settings, you define which CO version should be used to display the planned total. In addition, you can use the REEVALUATE function to increase or decrease budget values of selected WBS elements by a certain percentage or amount.

E	Lev	WBS element	Budget	Tra	Current budget	Distributed	Distributable	Planned total	Previous
	1	Elevator	200.000,00	EUR	200.000,00	180.000,00	20.000,00	182.901,33	
	2	Engineering/design	20.000,00	EUR	20.000,00		20.000,00	16.839,68	
	3	Electrical engineering		EUR				15.507,34	
	3	Mechanical engineering		EUR				1.332,34	
	2	Procurement	125.000,00	EUR	125.000,00		25.000,00	122.575,55	
	3	Procurement motor		EUR				7.247,57	
	3	Procurement cabine		EUR				110.547,80	
	3	Procurement equipment		EUR				3.597,48	
	2	Assembly	35.000,00	EUR	35.000,00		35.000,00	31.608,18	
	2	Acceptance		EUR				1.022,58	

Figure 3.2 Example for Distributing the Original Budget

[+] Planned Total of a WBS Element

The planned total of a WBS element is calculated from the total values from the hierarchical cost planning, detailed planning, unit costing, Easy Cost Planning, and from the values of all assigned additive orders and networks or activities.

Hierarchical consistency

The budgeting of a project must be hierarchically consistent by the time the availability control is activated. This means that the system checks within a project structure to verify whether the budget values of WBS

elements of a lower level exceed the budget value of the WBS element for the next highest level.

You can analyze the hierarchical distribution of the budget values manually within the project structure using the `DISTRIBUTED` and `DISTRIBUTABLE` views or activate an automatic check in Transaction `CJ30`. A project is typically budgeted top-down. This means that the person responsible for the budget successively distributes the original budget of the highest WBS element to the WBS elements of lower levels. In contrast to this method, however, you can also use the `TOTAL UP` function to derive the original budget of WBS elements from the budget values already distributed on WBS elements of lower levels, and therefore ensure hierarchical consistency.

Top-Down Distribution of Budget

You don't have to split the budget of a WBS element completely onto lower-level WBS elements. You can also distribute parts of the budget further, or you can abandon the distribution of budget altogether. This means that you don't have to perform budgeting to the lowest level of a project.

[+]

Depending on which settings you've selected in the budget profile of a project, you can enter the original budget of the project as overall values or as fiscal year-dependent values. Alternatively, you can enter both overall and original budgets with reference to fiscal years for WBS elements. With fiscal year-dependent budgeting, the budget profile also controls the interval that should be possible for budgeting. With the `COPY VIEW` function, you can use budget values from a previous year (`PREVIOUS YEAR` view) as a template for the budget values of a fiscal year, if required.

If you allow both overall values and fiscal year-dependent values for the distribution of original budgets, the overall budget of a WBS element must be greater than or equal to the total of its individual fiscal year budgets by the time the availability control is activated. You can manually check this using the `CUMULATIVE` view (total fiscal year values) and `REMAINDER` view (difference from overall value and total fiscal year values) for each WBS element. Alternatively, you can activate an automatic check.

Overall budget and
fiscal year budget

Figure 3.3 shows the results of a check where the distribution of an original budget is inconsistent. The first error message indicates a hierarchically inconsistent distribution. More budget was distributed than available in a fiscal year. The other error messages refer to the fact that, although fiscal year budgets were distributed, overall budgets were not.

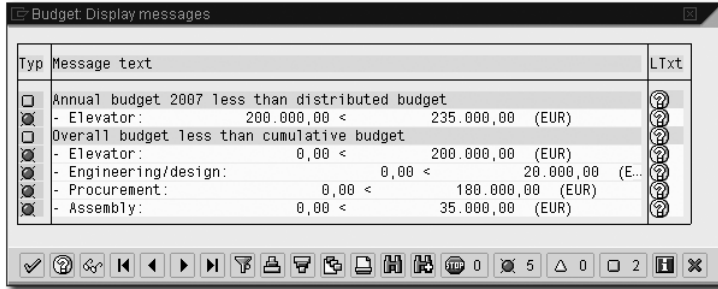


Figure 3.3 Example of Error Messages for Inconsistent Budget Distribution

Budgeting currencies

Using the budget profile, you also control the currencies in which the WBS elements can be budgeted. You can allow the uniform CO area currency and the object currency of the individual WBS elements in the project, or a transaction currency of your own choice for budgeting. However, the budget values entered are always converted into object and controlling area currencies of the WBS elements. The annual values in this case are converted using the rate type that was defined in the fiscal year-dependent values of CO version 0. The total values are converted based on the budget profile settings.

Depending on the budget profile settings, you can run the hierarchical consistency check and the cumulative annual values check against the overall budget of a WBS element either in the CO area currency, or in the object currency of the WBS elements. But, you should note that consistency checks in the object currency can only be run for projects where the object currency within the project structure is uniform.

Budget line item

When you save the distribution of the original budget, the system creates a unique document (*budget line item*) with additional information about the document date and the name of the person who created the document. Before you save the distribution, you can enter more detailed document texts for the entire budget distribution or for individual WBS

elements, which you can then evaluate later in Reporting or in Transaction CJ30 along with the other data for the budget line items.

Provided you don't use the special SAVE WITHOUT CHECKING function for saving the budget values, the system also automatically performs the checks for hierarchical consistency and for consistency of the overall value and cumulative values when you save, and thereby prevents inconsistent budget values from being saved. After you save the distribution of the original budget, all budgeted WBS elements are automatically assigned the BUDG (BUDGETED) status. This status prevents the budgeted WBS elements from being deleted directly and from hierarchical changes to these WBS elements and all lower-level objects.

BUDG status

3.1.2 Budget Updates

In the course of a project, you may need to change the project budget of individual WBS elements. You can, in turn, use Transaction CJ30 for this and adjust the original budget accordingly. When you save the budget, a new budget line item that allows the subsequent change to be analyzed is then created. However, instead of changing the original budget, it generally makes more sense to use *budget updates*. In this context, a distinction is made between *budget supplements*, *budget returns*, and *budget transfers*. Based on the budget updates and the original budget of WBS elements, the system then calculates a current budget for each WBS element.

When you work with budget updates instead of changing the original budget, the initial original budget remains unchanged. You can therefore compare the original budget with the current budget at any time in Reporting. In suitable budget reports, you can analyze how the current budget was achieved based on supplements, returns, or transfers. Because the line item documents of budget updates always contain information on the senders and recipients of budget values, you can also retroactively trace the flow of budget values. To prevent changes to the original budget values, thereby forcing the use of budget updates, you can define a user status that does not allow the BUDGETING business transaction, but does allow business transactions for updating a budget (see Chapter 1, Section 1.6).

Benefits
of budget
updates

Budget supplements

The two Transactions CJ36 (To Project) and CJ37 (In Project) are available in SAP Project System to enter budget supplements. You can enter the amounts for WBS elements, by which the current budget of these WBS elements is to be increased, in both transactions. You can post supplements for individual fiscal years or overall values. When you save the supplements, the system performs corresponding consistency checks exactly as it does when you distribute an original budget. You can also enter document texts that are then saved in a budget line item with the other data of the budget supplement.

Supplement in project

The difference between Transactions CJ36 and CJ37 is that with Supplement in Project (Transaction CJ37, see Figure 3.4), the increase in the current budget of a WBS element results in the distributable budget of the higher-level WBS element being reduced accordingly. If there is no more distributable budget available on the higher-level WBS element, you cannot post a supplement on the lower-level WBS element within the project due to the hierarchical consistency check. With supplements in a project, you can only supplement as much budget as is still available for distribution at the higher level.

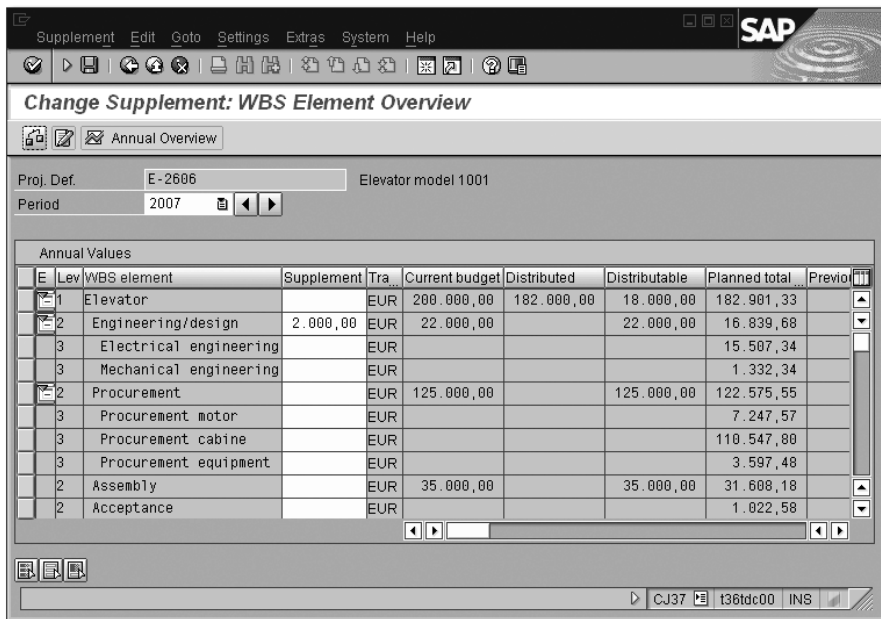


Figure 3.4 Example of a Supplement within the Project

In contrast, with Supplement to Project (Transaction CJ36), the increase in the current budget of a WBS element automatically results in the current budget of the hierarchically higher-level WBS element being increased by the same amount. This occurs regardless of whether a distributable budget existed on this WBS element. The distributable budget of the higher-level WBS elements therefore remains constant. A supplement to project therefore results in an additional budget being made available for a project "externally."

Supplement to project

Like budget supplements, you can also enter budget returns using Transactions CJ35 (From Project) and CJ38 (In Project). You use budget returns to reduce the current budget of WBS elements by a certain amount; however, a budget return must not impair the consistency of the budget values. When you post a return in project for a WBS element, this automatically increases the distributable budget of the higher-level WBS element. When you enter a return from project for a WBS element, the current budgets of the higher-level WBS elements are also automatically reduced; that is, they're extracted from the entire project budget.

Budget returns

You can use budget transfers for different purposes; for example, to move a budget from one WBS element to another WBS element (see Figure 3.5). The WBS elements here can even belong to different projects. If the WBS elements belong to a project, they must nevertheless not be within the same hierarchy branch. The system also automatically makes transfers between WBS elements of lower hierarchy levels to the WBS element of higher hierarchy levels.

Budget transfers

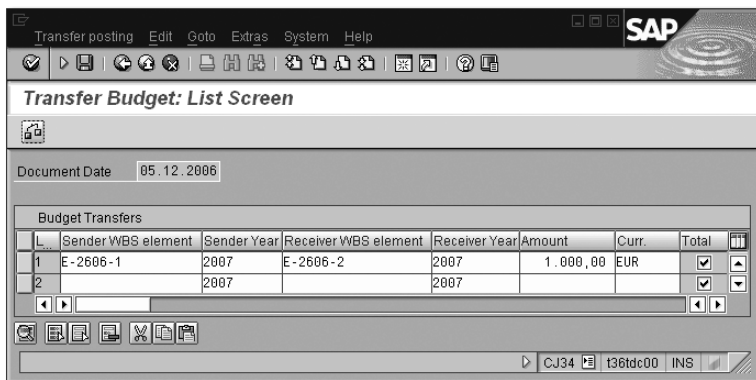


Figure 3.5 Example of a Budget Transfer

You can perform transfers for overall values or individual fiscal years. You can also transfer a budget of a WBS element for a fiscal year to another WBS element and another fiscal year, if required. Lastly, you can also transfer budget values of a fiscal year to another fiscal year for a WBS element (*advance* or *carry forward*). For each transfer, you can enter a document text that is saved in a budget line item with the relevant data of the transfer.

3.1.3 Budget Release

In some cases, it is useful to separate the distribution of budget values from the actual release of budgets for executing projects or individual parts of a project. This is also frequently necessary if budgeting with reference to fiscal years is not detailed enough and budgets are to be made available successively within a fiscal year. However, bear in mind that you need to carry out an additional step to release budgets when managing project budgets.

Released budget values In SAP Project System, you can use Transaction CJ32 to enter released budget values for WBS elements of a project. Similar to the distribution of original budgets, you can release overall or fiscal year values, depending on the settings of the budget profile. You can enter amounts manually in the RELEASE column or use the COPY VIEW function to copy values from other views, such as the values of the CURRENT BUDGET or PLANNED TOTAL views (see Figure 3.6).

In this case, you can select at what percent you want the values to be copied and whether the values are to be added to existing releases, or whether they should overwrite existing values.

Consistency checks You can also activate a check manually or automatically for releases when you save them. The check ensures that the releases of WBS elements don't overrun the releases of the higher-level WBS elements (hierarchical consistency). Each WBS element is also checked to ensure that the released budget does not exceed the current budget. If you're working with both overall values and fiscal year values, the release of the overall values must ultimately be greater than or equal to the total of the annual releases. Each budget release is documented by a budget line item, to which you can enter a descriptive document text before you save the release.

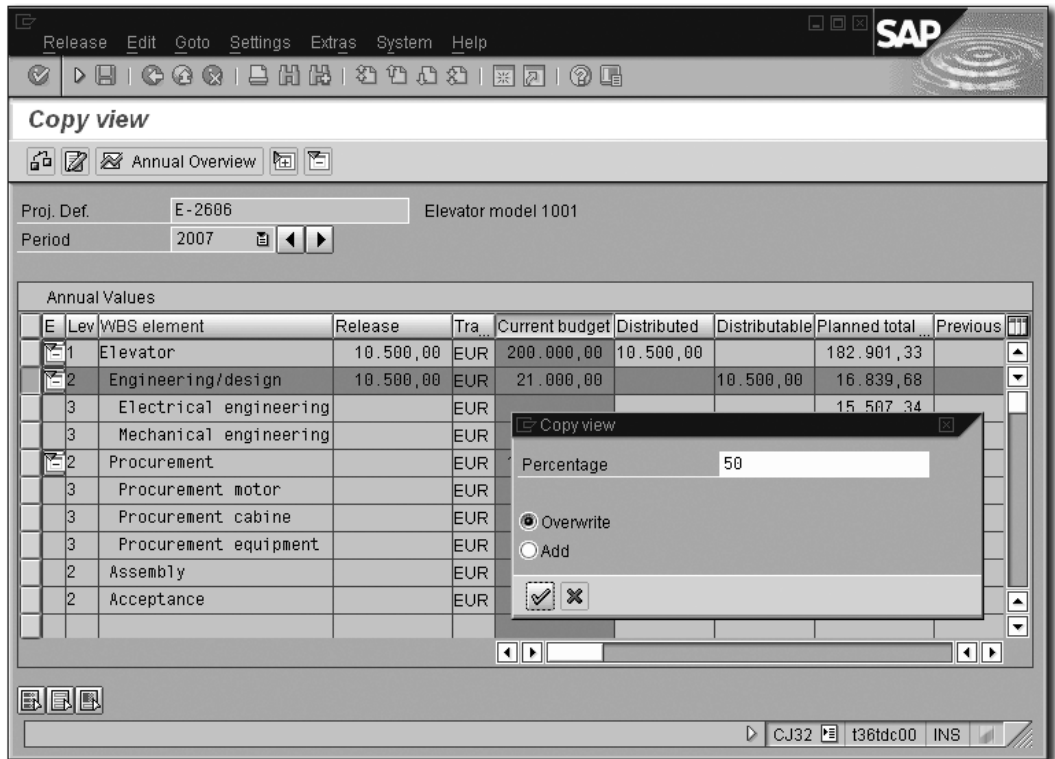


Figure 3.6 Example of the Budget Release Using the "Copy View" Function

You can also enter releases simultaneously for several projects in Transaction IMCBR3. You can copy the budget or planned values in full or with a release percentage weighted as a released budget. If required, you can perform this mass release for the total values and all fiscal year values simultaneously or restrict the mass release to an individual fiscal year.

Mass release of budgets

Budget Values in Project System



A distinction is made in SAP Project System between an original budget, the current budget, and, if necessary, budget releases. In addition to the currency in which they were entered, all budget values are also saved on the database in the object currency of the individual WBS elements and in the CO area currency of the project.

3.1.4 Budget Carryforward

In Transaction CJCO, you can transfer a budget that was not consumed for a project within one fiscal year into the following fiscal year. The system uses the difference of the fiscal year budget and the distributed values and actual costs to calculate the budget amount that is carried forward from one fiscal year into the next fiscal year for each WBS element. These actual costs include the costs of the WBS element with budget carried forward and the actual costs of all assigned orders and networks, and the actual costs of lower-level WBS elements without a separate budget. Note that the planned costs of apportioned orders and networks are not deducted from the fiscal year budget when the carryforward is calculated. Budgets are typically carried forward as part of a company's year-end closing. Because commitments are ignored when the budget values to be carried forward are calculated, you should use a commitment carryforward in Transaction CJCF before you carry forward budgets.

Carry forward several times

You can also carry forward the budget for a project several times. If, in the old fiscal year, actual costs were posted on the project at a later stage, a new budget carryforward results in the budget, which was already carried forward into the next year, being posted back to the previous year. However, in this case, only the maximum amount of budget that was previously carried forward in total into the next year can be posted back to the previous year. If necessary, you can also carry budget forward in the form of a test run and use detailed lists to first analyze the planned carryforwards before you start an actual update run.

Additional budgeting tools

Other tools available for managing project budgets in SAP Project System include:

- ▶ PLAN/BUDGET CONSISTENCY CHECK FOR PROJECTS (Transaction IMCOC3)
- ▶ TRANSFER PLAN TO PROJECT BUDGET (Transaction IMCCP3)
- ▶ ADJUST PLAN/BUDGET TO AGREE WITH ASSIGNED VALUES FOR PROJECTS (Transaction IMPBA3)
- ▶ CURRENCY RECALCULATION OF PLAN/BUDGET FOR PROJECTS (Transaction IMCRC3)

Restrictions of Transaction IMPBA3**[+]**

Note that the ADJUST PLAN/BUDGET TO AGREE WITH ASSIGNED VALUES FOR PROJECTS function ignores statuses that don't allow changes to planning or budgeting. The transaction for adjusting plans/budgets to assigned values for projects is therefore not available in the SAP menu; you can only start it by calling Transaction IMPBA3 directly.

For more information about the functions of the transactions listed previously and each consistency check executed, see the program documentation, which you can call from the transactions.

3.1.5 Availability Control

A main task of managing budgets for projects is to contrast the budget with the individual project parts; that is, their approved cost structures, the planned, commitment, and actual costs based on purchase orders and activity inputs or material withdrawals, for example. For this reason, different standard reports are available in the reporting area of SAP Project System.

However, availability control also enables the system to determine relevant funds automatically in the background and to compare these assigned funds with the corresponding budget values. By doing so, the availability control can warn you of imminent budget overruns before they occur, or even notify you of the allotment of excess funds on WBS elements at the time they are created.

As soon as the availability control for a project is active, the system performs different steps for postings on a WBS element of the project, or for postings to assigned apportioned orders or networks or network activities. The system first determines the relevant WBS elements of the project carrying budget. If a posting is made on a WBS element that does not have its own budget, the system searches successively for a WBS element carrying budget at the higher level.

Availability control process

The system then determines the associated funds for the WBS elements carrying budget. The assigned value of a WBS element carrying budget consists of the following:

Assigned values

- ▶ Actual costs or static actual costs on the WBS element carrying budget
- ▶ Actual costs and static actual costs of lower-level WBS elements without their own budget
- ▶ Commitments on the WBS element carrying budget and on lower-level WBS elements without their own budget
- ▶ The maximum from the planned and actual costs and the commitments of assigned apportioned networks and orders

The individual contributions to the assigned values of a WBS element carrying budget warrants further explanation. Actual costs based on goods withdrawals and documents from FI or CO, for example, belong to the actual costs that are included in the calculation of assigned funds. In particular, debits due to settlements are also included in the calculation of the assigned value. Credits caused by settlements are only considered if the settlement took place on a budget-controlled object. Commitments are created due to purchase requisitions, purchase orders, or funds reservations.

Apportioned orders

Values of assigned orders or networks are either already included in the calculation of assigned values with the CREATED status, or included once the orders have been released. You can use the ASSIGNED FUNDS IN PLAN indicator in the DEFINE ORDER VALUE UPDATING FOR ORDERS FOR PROJECTS table (Transaction OPSV) in Customizing of SAP Project System to determine which of the two statuses you want the values to be included in the assigned funds calculation. In this case, you can implement their setting based on the order category, order type, and CO area of the orders.



Assigned Values of Networks and Orders

With the exception of planning networks, the values of assigned orders or networks are included in the calculation of assigned values by the time the RELEASED status is assigned. In particular, the planned values of assigned apportioned orders represent funds against the budget of WBS elements. The planned values of material components for valuated stock are not included in the total of assigned values, however.

Exempt cost elements

If you want to exclude certain costs (for instance, overhead costs) as assigned values, you can enter the corresponding cost elements as

exempt cost elements based on the CO area in Transaction OPTK in Customizing of SAP Project System. These exempt cost elements are therefore not checked as assigned values against the budget of WBS elements. Revenues are generally ignored when assigned values are determined.

After the system has determined the relevant WBS elements carrying budget and calculated the corresponding assigned values due to a posting on a project, a check takes place in the last step of the availability control. This check compares the available budget of WBS elements carrying budget with their assigned funds.

If the availability control determines that certain tolerance limits you defined are exceeded by assigned values, the system does one of the following three actions:

Availability control actions

► **Warning**

When the user who made the posting on the project saves the data, he receives a warning message that refers to the exceeded tolerance limit. The user can now either save the corresponding document, or postpone the document for the time being, if necessary, to consult with the project manager first.

► **Warning and mail to project manager**

The user who makes the posting receives a warning message and decides whether or not to save the posting document. When the document is saved, the system generates an email to the person responsible for the WBS element carrying budget, for which the limit was exceeded, and to the person responsible specified in the project definition. The email contains information about the WBS element in question, the level by which the tolerance limit has been exceeded, the business transaction that triggered the action, and its document number.

► **Error message**

With this action, documents that would lead to the specified tolerance limits being exceeded are not saved. The user receives a corresponding error message.

First, consider what effects the use of the ERROR MESSAGE action could have internally (for instance, when you enter invoices in FI). Generally, the ERROR MESSAGE action is only used for select business processes.

Business transaction groups

You define the tolerance limits and the relevant action that the system should take when the tolerance limits are exceeded in the DEFINE TOLERANCE LIMITS Customizing transaction based on the budget profile and the *transaction groups* (see Figure 3.7). Business transaction groups in this case represent the groupings of business transactions.

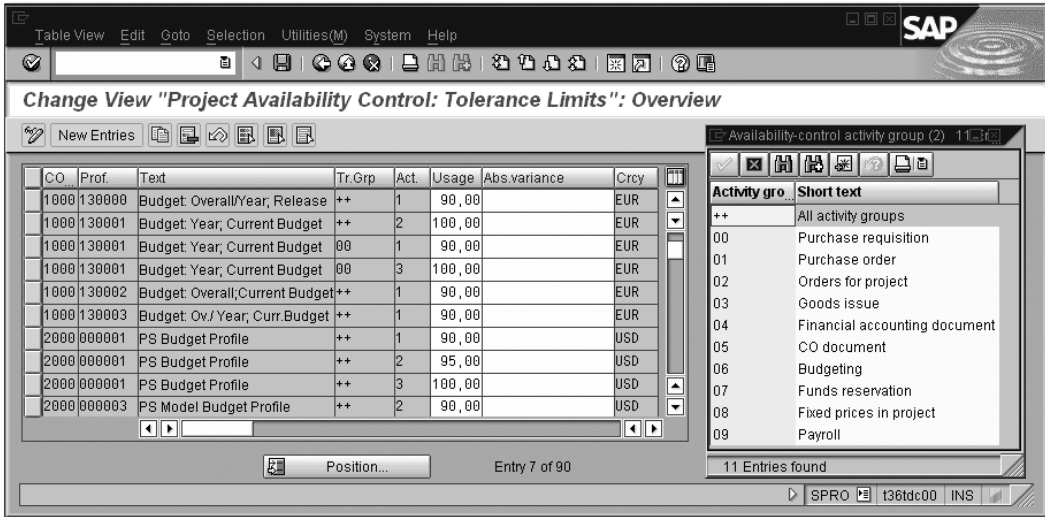


Figure 3.7 Defining the Tolerance Limits of Availability Control Based on Business Transaction Groups

The business transaction group for FINANCIAL ACCOUNTING DOCUMENT therefore covers postings in FI; the business transaction group for BUDGETING covers subsequent budget changes, and so on. The business transaction group for ORDERS FOR PROJECT covers planning cost changes of assigned, apportioned orders and also the assignment of orders with assigned values. Postings on assigned orders (for instance, the account assignment of a purchase order), however, are checked in the business transaction group (PURCHASE ORDER) provided for the posting.

The business transaction group for ALL BUSINESS TRANSACTION GROUPS is used to define actions for a tolerance limit for all those business transaction groups for which you do not want to specifically implement other settings. However, if you implement settings for a business transaction group of a tolerance group, these have priority over the settings of the business transaction group for ALL BUSINESS TRANSACTION GROUPS. Only

those business transactions you defined tolerance limits and actions for in the DEFINE TOLERANCE LIMITS table are taken into account during the availability control check.

Assigned Values of Goods Receipts

Although the business transaction of the goods receipt generates assigned values, you should note that it is ignored during the availability control check. Therefore, use the PURCHASE ORDER business transaction group for the check and, if necessary, don't allow account assignments to be changed for the goods receipt posting.

[+]

The tolerance limit settings for projects with the budget profile 130001 illustrated in the example in Figure 3.7 result in a warning message (Action 1) being issued each time a purchase requisition is posted (business transaction group 00), which leads to more than 90% of the available budget being consumed. If purchase requisitions exceed the available budget, the system reacts by issuing an error message and therefore prevents the purchase requisitions from being posted (Action 3). All other business transactions only result in a warning message being issued and an email being sent to the corresponding person responsible in the project (Action 2) if the budget is exceeded.

Example for defining tolerance limits

For the availability control, you specify in the budget profile of a project which budget is to be used as the basis for the check, in which currency you want the availability control to be implemented, and when the availability control should actually be activated. Depending on the budget profile settings, you can perform the availability control check against the current, still distributable total or annual budget or, (if you are working with budget releases) against the released, overall, or annual budget that can still be distributed.

Settings in the budget profile

Just as with the consistency checks for budgeting, you can also carry out the availability control either in the CO area currency of the project or in the object currency of the WBS elements. However, the latter only works if the object currency within the project is uniform; in other words, it is the same for all WBS elements of a project. Using the object currency for the availability control is particularly relevant if you have also carried out the budgeting in the object currency. The postings on the project will mainly be entered later in the object currencies, or in

Currency of availability control

foreign currencies, and you will have to anticipate widely fluctuating exchange rates between the object and foreign and CO area currencies.

Activating the availability control

You can use two options to activate the availability control for a project. If you select setting 1 (AUTOMATIC ACTIVATION DURING BUDGET ALLOCATION) in the ACTIVATION TYPE field of the budget profile (see also Figure 3.1), the availability control for a project is automatically activated when you enter a relevant budget. If you want the availability control to check funds against the current budget, the activation already takes place when the original budget is distributed. If you want the check to reference the released budget, the availability control is only activated automatically once you have released the budget.

[+]

Automatic Activation During Budget Allocation for WBS Elements without Budget

Suppose you want to use activation type 1, but also plan on activating the availability control, even though you don't yet want to distribute or release any budget. In this case, perform budgeting or release a budget (the availability control is activated) and then immediately return the budget again (the availability control remains active).

If you select activation type 2 (BACKGROUND ACTIVATION) in the budget profile, you can either manually activate the availability control in the background, or this can be done automatically by the system. You can manually activate the availability control of a project in Transaction CJBV. To activate the availability control automatically, define a job in Transaction CJBV for all relevant projects, which regularly checks in the background whether the funds of the projects exceed the usage level specified in the budget profile. If this is the case, the availability control is activated automatically for the corresponding projects.

Deactivating the availability control

If you don't want to use the availability control function for managing budgets for projects, you can select activation type 0 (CANNOT BE ACTIVATED) in the budget profile. Selecting this setting means that you cannot activate an availability control manually or automatically. However, you may also need to deactivate an availability control that is already active. To do this, you can use Transaction CJBW in the SAP Project System menu. If you only want to exclude individual WBS elements of a project from the availability control, you can define a user status that

does not allow the AVAILABILITY CONTROL business process (see Chapter 1, Section 1.6) and set it in the corresponding WBS elements.

In Transaction CJ30 or CJ31, you can call information about the availability control and conduct a detailed analysis of the budget values already available and still distributable and all relevant Customizing settings (see Figure 3.8). If, in the case of an active availability control, you make changes later to relevant Customizing settings of the budget profile, tolerance limits, exempt cost elements, or the order value update for the project, you should reconstruct the availability control for all affected projects in Transaction CJBN. You will find more useful information about availability control in SAP Notes 178837, 165085, and 33091.

Availability control analysis

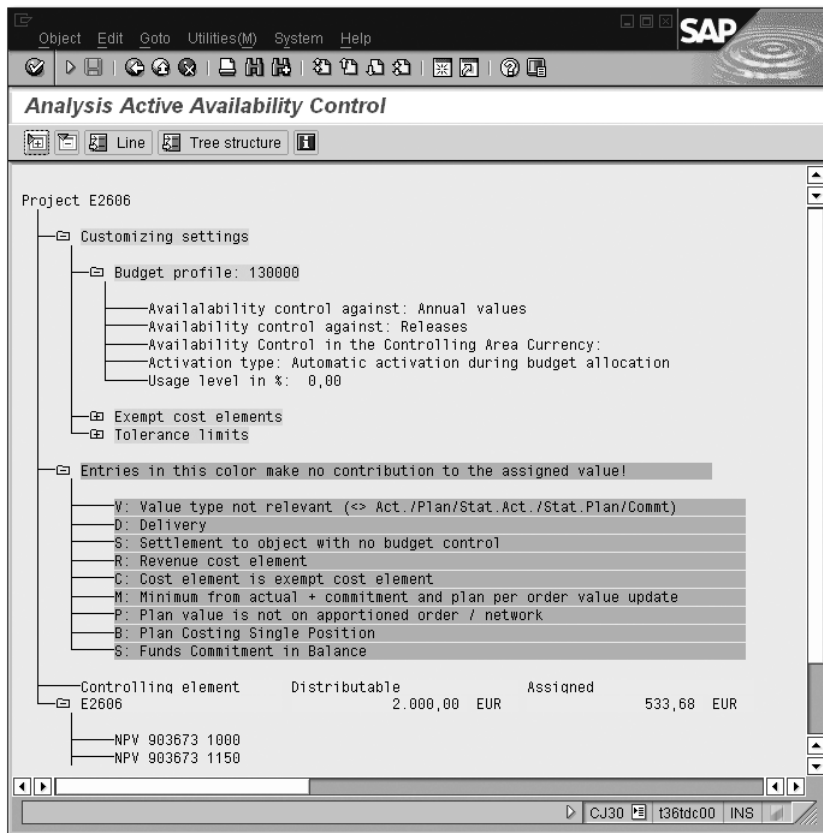


Figure 3.8 Analysis of Availability Control in Transaction CJ30



Budgeting Functions in SAP Project System

In SAP Project System, you can distribute budget values hierarchically to WBS elements of your projects. Depending on requirements, you can distribute budgets as overall budgets, fiscal year budgets, or releases of less than one year. You can use budget updates to make subsequent changes to your budgeting. The availability control ensures that the system automatically issues warning or error messages, or sends email to the relevant project managers when specific tolerance limits of the budget values are exceeded.

3.2 Integration with Investment Management

If several projects split budgets, or if you want other plans that are not mapped using projects to be taken into account when budgets are allocated, an isolated consideration of individual project budgets is not sufficient. However, you cannot manage a budget across projects simply by using the aforementioned SAP Project System tools. Nevertheless, by using the integration of SAP Project System with Investment Management in the SAP system, not only can you plan, distribute, and monitor budgets of projects, you can also do this simultaneously for the budget values for internal or maintenance orders at a higher level.

Investment programs

Investment programs in Investment Management form the basis for the comprehensive planning and budgeting of costs for a company's plans or investments. When you create investment programs, you make an assignment to a *program type* in each case, through which the system automatically derives default values and control parameters. Investment programs consist of an *investment program definition* with general specifications and default values for the entire program and hierarchically arranged *investment program positions*.

You can structure investment programs based on any criteria, such as geographical factors, the size of the plan, or the organizational setup of your company. After you create the structure of an investment program, you can use this structure to plan costs hierarchically and to allocate budgets. Figure 3.9 shows an example of the structure of an investment program and budget values that were distributed at different levels for the programs involved.

Index

A

Access control list, 22, 36, 39, 46, 65, 503
Account assignment category, 118, 179, 182, 320, 323, 426, 536
Account assignment element, 31, 38, 245, 295, 363, 400
Account determination, 221
Accounting, 13, 120, 289, 343, 379
 data, 388, 419, 438, 448, 469, 491, 512
Action box, 361, 363
Activity, 46, 48, 67, 138, 211, 242, 291, 294, 302, 334, 354, 372, 413, 495
 account assignment, 63, 185, 243
 allocation, internal, 294, 298, 312, 365, 369
 assignment to WBS element, 21
 element, 46, 67, 144, 291, 302, 334, 354, 449, 498
 elements, 55
 individual overview, 449
 milestones, 72
 time-critical, 86, 143
 type, 48, 65, 140, 174, 193, 220, 224, 227, 228, 238, 305, 312, 319
Actual costs, 261, 272, 274, 295, 327, 346, 362, 365, 394, 412, 435, 468
 statistical, 32, 274, 326
Actual costs/revenues, 468
Actual date, 290, 294, 304, 337, 344, 413
 determine, 291
 extrapolate, 291
 manual entry, 291
 milestone, 294
 provisional, 290, 292
Actual price, 366, 435
Actual revenue, 166, 336
ACWP value, 346
Ad hoc report, 455
Administrator Workbench, 98

Advance procurement, 191, 329
Alert management, 503
Allocation key, 413
Allocation structure, 423
ALV interface, 467
ALV-based overviews, 448
APO, 186
Applicant, 28, 44
Application Link Enabling (ALE), 29
Appropriation request, 281
Approval phase, 131, 261
Approval process, 510, 511
Archiving, 61, 126, 530
 object, 128
Assembly, 24, 183, 186, 195, 211, 324
 processing, 82, 114, 148
 type, 117
Asset, 287, 420, 431, 434
 accounting, 32, 287, 420, 434
Asset Under Construction (AUC), 78, 287, 422, 431
Assigned additive networks, 488
Assignment, 425
AUC → Asset Under Construction (AUC)
Authorization, 22, 80, 96, 105, 503
 concept, 17, 22, 503
Availability check, 186, 208, 210, 332, 446
Availability control, 32, 61, 262, 264, 273, 279, 295, 298, 539, 540
 actions, 275
 activation, 278
 business transaction group, 276
 check, 275
 tolerance limit, 276
Available capacity, 90, 158, 175, 477

B

Background job, 97, 121, 238, 500
Background saving, 97

- BAdI, 14, 184, 243, 315, 335, 349, 356, 428, 506
 - Balancing object, 381, 388
 - BAPI, 16, 317, 410, 493, 494, 506, 519
 - Bar chart, 87
 - Base planning object, 221
 - Baselining, 133
 - Basic date, 132, 133, 147, 152, 242, 292, 533
 - Basic key figure, 462
 - BCWP value, 346
 - BCWS value, 346
 - Bill of material (BOM), 191, 194, 199, 211, 324, 534
 - explosion*, 187, 196, 211, 324
 - item*, 192, 195
 - mapping data*, 202
 - material BOM*, 195
 - sales order BOM*, 199
 - transfer*, 196, 197, 537
 - work breakdown structure BOM*, 196
 - Billing, 73
 - document*, 294
 - element*, 31, 38, 250, 383, 400, 408, 410
 - milestone billing*, 337
 - plan*, 69, 124, 251, 257, 337
 - request*, 342, 470
 - resource-related*, 337, 339, 342
 - rule*, 251, 337
 - Bottom-up projecting, 135
 - Budget, 261, 271, 280, 467, 514
 - advance*, 270
 - assignment*, 285
 - carry forward*, 270, 272, 539
 - check*, 270
 - current*, 267
 - distribution*, 286
 - line item*, 266
 - mass release*, 271
 - monitoring*, 32, 262
 - profile*, 262, 265, 277, 287, 540
 - release*, 270
 - return*, 267, 283
 - supplement*, 268, 283
 - transfer*, 267, 269
 - Budget, 261, 271, 280, 467, 514 (Cont.)
 - type*, 283
 - update*, 267
 - value*, 262, 352, 451, 488
 - Budget management, across projects, 280, 287
 - Budgeting, 246, 261, 267, 270, 276, 282, 540
 - adjust plan/budget*, 272
 - check*, 265
 - consistency check*, 272
 - copy view*, 263
 - currency recalculation*, 272
 - fiscal year-dependent value*, 265
 - plan transfer*, 272
 - revalue*, 264
 - save*, 267
 - total up*, 265
 - total value*, 265
 - Business area, 28, 30, 47, 363, 386, 427
 - Business object type, 493
 - Business partner, 502
 - Business process, 369, 374, 377
 - Business transaction, 474
- ## C
-
- Calculate end date, 139
 - Calculate start date, 138
 - Calculation key, 49
 - Capacity category, 160, 481, 485, 536
 - Capacity leveling, 90, 158, 173, 534
 - Capacity load, 480
 - Capacity planning board, 174
 - Capacity report, 126, 165, 310, 479
 - capacity details*, 481, 485
 - enhanced capacity evaluations*, 484
 - overall profile*, 480, 485
 - standard overview*, 481, 485
 - variable overview*, 483
 - Capacity requirement, 49, 65, 78, 90, 126, 133, 147, 158, 161, 164, 165, 303, 315, 479, 484
 - actual*, 166, 486
 - individual overview*, 449
 - planned*, 165

- Capacity requirement, 49, 65, 78, 90, 126, 133, 147, 158, 161, 164, 165, 303, 315, 479, 484 (Cont.)
 - planning*, 158, 173, 480
 - remaining*, 165
- Capacity split, 166, 307, 484
- Cash flow, 470
- Catalog, 182, 187, 194
- CATS → Cross-Application Time Sheet
- Change document, 38, 62, 449
- Change profile, 63, 113
- Characteristic, 112, 229
 - valuation*, 229
 - value assignment*, 111
- Check control, 208, 210
- Checking rule, 210
- Checklist, 503
- Claim, 129
 - external claim*, 360
 - internal claim*, 360
- Claim Management, 359, 542, 543
 - activity*, 361, 363
 - consequences long text*, 360
 - reasons long text*, 360
 - task*, 361, 363
- Class, 112, 231
- Classification, 38, 61, 75, 231, 488
- CO version, 92, 120, 214, 222, 225, 227, 232, 243, 250, 261, 264, 396, 410, 415, 417, 452, 464, 491, 537
- Coding mask, 26, 36, 39, 45, 115
 - Customizing*, 40
 - key*, 40
 - lock indicator*, 40
 - section*, 40
 - special characters*, 42
 - structure length*, 42
- Collection, 510
- Collective purchase requisition, 180
- Collective stock, 187, 323, 329
- Commitment, 63, 179, 272, 295, 318, 323, 327, 375, 412, 451, 467
 - items*, 381, 385, 452, 471, 474, 549
- Company code, 27, 30, 47, 342, 386, 427, 473
- Company structure, 30, 471
- Completion confirmation slip, 66
- Configuration profile, 113
- Confirmation, 66, 150, 291, 294, 302, 304, 309, 312, 349, 369, 413, 446, 481, 543
 - activities*, 317
 - collective confirmation*, 310, 541
 - final*, 302
 - individual confirmation*, 309
 - individual overview*, 449
 - parameter*, 60, 294, 302, 307, 310, 543
 - partial*, 302
 - process control*, 306
 - summary confirmation*, 311
- Connection mode, 54, 85, 89
- Control key, 49, 57, 65, 67, 140, 238, 302, 309, 532
 - PS01*, 49
 - PS02*, 50
 - PS03*, 53
 - PS05*, 51
- Control lists, 29
- Controlling, 213, 501
- Controlling area, 27, 30, 47, 295, 351, 373, 401, 409, 418, 489
 - currency*, 27, 218, 266, 271, 381, 404, 448
- CO-PA → Profitability Analysis (CO-PA)
- Copy function, 215, 315, 356
- Cost activity, 52, 53, 141, 241, 414
- Cost center, 220, 224, 227, 228, 258, 365, 369, 372, 377, 420, 426, 432
 - planning*, 225
- Cost collector, 362
- Cost element, 53, 213, 220, 227, 228, 238, 241, 258, 261, 327, 373, 381, 385, 396, 401, 408, 419, 422, 452, 461, 463, 514
 - group*, 462
 - planning*, 223
 - report*, 416, 460, 465, 491, 547, 549
- Cost estimate, 233
- Cost forecast, 412, 415, 545
- Cost object, 420
- Cost Performance Index (CPI), 346

- Cost planning, 249, 261, 359
 - by cost element*, 213, 219, 223, 227, 237, 244
 - by date*, 213, 223, 237, 244
 - check*, 218
 - copy*, 232
 - copy view*, 218
 - detailed planning*, 223
 - distribution*, 224
 - hierarchical*, 216, 264
 - integrated planning*, 225
 - manual*, 213
 - planned total*, 218, 222
 - revaluate*, 218
 - total up*, 218
 - total value*, 216, 218
- Cost project, 383
- Cost structure, 261
- Costing item, 219, 227, 299
- Costing model, 227
- Costing sheet, 223, 225, 228, 372, 378, 506
- Costing structure, 228
- Costing variant, 61, 222, 232, 243, 306, 326, 372, 538
- Costs element, 55, 241
- Costs of work performed, 345
- Costs, at completion, 413
- Costs, to complete, 412
- cProjects, 501
- Create network, 72
- Cross-Application Time Sheet (CATS), 166, 299, 312
- Cumulated available capacity, 485
- Currencies, 466
- Currency, 266, 460
 - CO area currency*, 266, 271, 277
 - company code currency*, 404
 - controlling area currency*, 381, 404
 - object currency*, 266, 271, 277, 448
 - transaction currency*, 266
 - translation*, 218
- Customer enhancement, 14, 29, 46, 96, 99, 120, 129, 154, 177, 238, 258, 314, 326, 351, 381, 443, 453, 488, 512
- Customer inquiry, 254, 256
- Customer project, 100, 119, 383
- Customer quotation, 252, 257, 470
- Customized extension, 81
- Customizing, 27, 45, 47, 65, 95, 98, 103, 116, 122, 134, 141, 152, 159, 169, 184, 192, 203, 232, 246, 252, 305, 315, 335, 373, 402, 418, 423, 457, 471, 480, 486, 503, 506, 513, 530
 - coding masks*, 45
- Customizing activity
 - BS42 (Define Selection Profiles for Information System)*, 441
 - CJBN (Reconstruct Availability Control)*, 279
 - CJEN (Rebuild Project Information Database)*, 453
 - CJEQ (Import Reports)*, 453
 - CMPC (Define Profiles for Workforce Planning)*, 169
 - CN38 (Define Fields in BOM and Activity as Reference Point)*, 198
 - CO82 (Interval Maintenance, Order)*, 61
 - CPT2 (Maintain Templates)*, 377
 - CTU6 (Maintain Environments and Function Trees)*, 378
 - Define Execution Service Profile*, 300
 - Define Tolerance Limits*, 276
 - FIPOS (Create/Assign Commitment Items)*, 472
 - FM3N (Assignment G/L Account/Commitment Item)*, 473
 - FMCIA (Create Individual Commitment Items Manually)*, 384, 471
 - KANK (Set Up Number Range for Daily Payment Planning)*, 384
 - KANK (Set Up Number Range for Exact-to-the-Day Payment Planning)*, 473
 - KEN1 (Number Assignment for Actual Postings)*, 409
 - KEQ3 (Define Characteristics of Profitability Segments)*, 409
 - KP80 (Maintain Specific Distribution Keys)*, 224
 - KTPF (Assign Templates)*, 378
 - ODP1 (Maintain Profiles for Quotations and Billing)*, 257

- Customizing activity (Cont.)
- OITA (Define Investment Profile)*, 432
 - OK02 (Create Status Profile)*, 79
 - OKG2 (Results Analysis Version)*, 396
 - OKG3 (Valuation Methods for Results Analysis)*, 398
 - OKG4 (Update for Results Analysis)*, 402
 - OKG5 (Define Line ID)*, 401
 - OKG8 (Assign FI Posting Rules to Results)*, 402
 - OKKT (Create Costing Variant)*, 222
 - OKS7 (Generate Reports)*, 461
 - OKSR (Import Reports)*, 461
 - OP21 (Maintain Formula Definitions)*, 161
 - OP45 (Define Usage)*, 159
 - OP4A (Define Shift Sequences)*, 161
 - OPH4 (Post Follow-Up from Materials Management Documents)*, 475
 - OPI2 (Assign Cost Elements to Value Categories)*, 409
 - OPI6 (Activate Project Cash Management in Company Code)*, 473
 - OPIB (Detailed Settings for Interest Profile)*, 385
 - OPIE (Define Interest Indicator)*, 381
 - OPJJ (Define Scope of Check)*, 208
 - OPJK (Define Checking Control)*, 211
 - OPK5 (Define Reasons for Variances)*, 305
 - OPS8 (Define Procurement Indicators for Material Components)*, 192
 - OPS9 (Maintain Budget Profile)*, 262
 - OPSA (Create Project Profile)*, 37
 - OPSC (Maintain Network Types)*, 60
 - OPSJ (Define Project Coding Mask)*, 40
 - OPSK (Define Special Characters for Projects)*, 42
 - OPST (Define Confirmation Parameters)*, 307
 - OPSU (Define Control Key)*, 65
 - OPSV (Define Order Value Updating for Orders for Projects)*, 274
 - OPT6 (Define Milestone Groups for Standard Milestones)*, 69
- Customizing activity (Cont.)
- OPTK (Specify Exempt Cost Elements)*, 275
 - OPTT (Account Assignment Categories and Document Types for Purchase Requisitions)*, 179
 - OPTX (Define Database Selection Profile)*, 440
 - OPUR (Define Project View for Information System)*, 443
 - OPUS (Stipulate Version Keys for the Simulation)*, 124
 - OPUU (Maintain Network Profiles)*, 64, 177
 - OPUV (Specify Parameters for Network Type)*, 61
 - RCNPRECP (Activation of ECP Plan Versions)*, 232
- CV value, 346
- ## D
-
- Data entry profile, 315
 - Data selection, 95, 438, 441, 451, 463, 480
 - Data set, 94, 126
 - Data transfer, 500
 - Database profile, 123, 438, 452, 548
 - Database table, 462, 527
 - Date, 241
 - category*, 251
 - check*, 136, 156
 - constraints*, 142
 - earliest*, 139, 144, 163, 238, 292
 - extrapolate*, 135, 153, 156
 - inherit*, 135, 156
 - latest*, 139, 145, 163, 292
 - monitoring*, 149
 - overview*, 154
 - planning*, 536
 - range*, 135
 - scheduled*, 139
 - shift*, 135
 - Debit, 434
 - Debit type, 452
 - Decision point, 510

Degree of processing, 294, 302, 304, 312
 Deletion flag, 126
 Deletion indicator, 127
 Delivery address, 188, 193
 Delivery from project, 322, 330, 334, 542
 Delivery information, 331
 Dependent requirement, 324, 334
 Derivation rule, 231
 Detailed list, 272, 367, 376, 411, 427, 455
 Detailed planning, 250, 264
 activity input planning, 223, 226
 cost element planning, 223, 226, 234, 250
 Difference column, 446
 DIP profile, 254, 257, 340, 538
 characteristic, 258
 source, 258
 Display variants, 467
 Distribution channel, 257
 Distribution function, 163
 Distribution key, 53, 162, 164, 224, 242, 250, 484
 Distribution rule, 421, 425, 433
 Distribution strategy, 162
 Division, 257
 Document, 75
 info record, 75, 76
 management, 75, 360
 overview, 299
 type, 116, 179, 258, 300, 338, 438
 Down payment, 73, 239, 294, 338, 475
 request, 337, 342, 470, 475
 Draft, 97, 126, 156
 Draft Workbench, 97
 Drilldown, 458
 Drilldown list, 455
 Drilldown report → Hierarchy report
 Duration, 49, 140, 141, 144, 162
 flexible, 144
 reduction, 141
 scheduling-relevant, 66, 138, 144, 292
 Dynamic selection, 367, 440, 452, 477

E

Earned value, 352
 Easy Cost Planning, 124, 133, 227, 232, 264, 299, 375, 379, 535, 538
 ECC system, 13, 22
 Edit mode, shared mode, 96
 Element hierarchy, 31
 Elements, 55
 Elimination of internal business volume, 435
 Enhancement Package (EHP)
 EHP2, 58
 EHP3, 17, 22, 29, 50, 128, 180, 184, 189, 194, 227, 238, 243, 248, 335, 355, 356, 417, 427, 441, 493
 EHP4, 82, 94, 126
 EHP5, 100, 119, 157
 EHP6, 14, 82, 94, 99, 154, 215, 233, 237, 437, 468
 Enterprise services, 16, 493, 523
 Entry of service, 541
 EPC, 499
 EPS interface, 493
 Error log, 376
 Error logs and cancellation, 388
 Estimate at completion, 413
 Estimate to completion, 412
 Evaluation model, 511
 Exception, 123, 170, 445, 460
 Exception profile, 336
 Exchange rate type, 218
 Execution factor, 48, 114
 Execution Service, 233, 299, 543
 Exempt cost element, 262, 275, 540
 Expert mode, 466
 External element, 55, 176, 239, 317
 External processing, 176, 239, 317, 413
 Externally processed activity, 50, 66, 140
 Extract, 466

F

Factory calendar, 54, 134, 140, 160
 FI, 28, 299, 420
 Field key, 35, 44, 67

Field selection, 29, 102, 184, 286, 294, 309, 316, 444, 481, 485
 Field, referenced, 38
 Filter criterion, 441
 Filter function, 107, 360, 444, 448
 Final confirmation, 164, 291, 309
 Financial data, 512
 Financials, 505
 Finish-start relationship, 54, 86, 139
 Fiscal year, 272
 Fixed dates, 73
 Flexible detail screen, 103
 Float, 86, 143
 free float, 144
 total float, 143
 Floorplan Manager, 235
 Flow control, 354
 FM area, 470, 473
 Following activities, 71
 Forecast data, 165, 293, 302, 304, 307, 365, 412, 453
 Forecast date, 132, 293, 304, 534
 Forecast version, 415
 Forecast Workbench, 417, 546
 Form, 455
 Formula, 44, 140, 161, 229, 238, 377
 Functional area, 61
 Fund, 262, 273
 reservation, 274
 Funds commitment, 295, 298
 Funds Management, 36

G

Gantt chart, 98, 155, 446
 General Ledger (G/L), 327, 386
 account, 472
 General selections, 464
 Goods issue, 186, 233, 294, 299, 300, 306, 325, 335, 415
 Goods receipt, 185, 294, 295, 297, 320, 323, 326, 328, 335, 541
 Grouping indicator, 29, 180
 Grouping WBS element, 33, 205, 206
 Grouping, Pegging, Distribution (GPD), 208

H

Hierarchical cost planning, 216, 264
 Hierarchy, 84, 256, 366, 442, 448
 graphic, 85
 node, 487
 Hierarchy report, 407, 411, 416, 435, 452, 458, 473, 475, 487, 549
 functions, 460
 output type, 453

I

Implementation phase, 131, 185, 289, 474
 Inclusion, 82
 Incoming orders, 405, 411, 544
 determination, 406
 project-related, 405, 435
 Incoming payments, 452
 Indicator, operational, 31, 85, 295
 Individual capacity, 161, 166, 174, 477, 485
 Individual overview, 438, 448, 479
 ALV-based, 450
 enhanced, 451
 Individual phases, 510
 Info System
 Financials, 437
 Structures, 208, 437
 Infotype, 166, 315
 Initiative, 510
 Input help, 42
 Input template, 124
 Integrated planning, 33, 225, 244
 Integrated Product and Process Engineering → iPPE
 Interest, 380, 388
 indicator, 381
 profile, 381, 382
 Interests, 452
 Interface, 194, 317, 493, 499
 Internal element, 55, 238
 Internal order, 20, 245, 281, 362, 363, 374, 488, 506

Internally processed activity, 49, 158, 161, 169, 238, 413
 Internet service CNW4, 75
 Investment Management, 262, 280, 287, 432, 539
 Investment measure, 281, 283, 285
 Investment profile, 287, 381, 422, 432
 Investment program, 280
 definition, 280
 position, 280, 282, 284
 Investment project, 428
 Invoice receipt, 185, 295, 297, 320, 323, 414
 Invoicing plan, 69, 73, 239, 241, 414
 Invoicing rule, 239
 iPPE, 35, 39, 201, 534
 Item category, 184, 187, 192, 195, 219, 228, 241, 242, 414
 Item view, 228
 Item, dynamic, 255, 258, 340, 395

J

Job monitor, 128
 Joint Venture Accounting, 35

K

Key date, 413
 Key figure, 510
 type, 247

L

Layout, 99, 335, 447, 467
 Lean Staffing, 157
 Level, 31, 86, 135, 153, 196, 265, 286, 400, 489, 505
 Library, 462
 Limit of values, 52, 182
 Line ID, 401
 Line item, 219, 244, 381, 384, 434
 report, 451, 467, 468, 475
 Liquidity Planner, 470
 Location, 28
 Lock period, 403

Log, 98, 106, 128, 299, 355, 379, 388, 428, 497
 Logistics, 476
 Long text, 26, 68, 176, 448
 Loop analysis, 87, 98, 155

M

Maintenance Event Builder, 59
 Mass change, 105, 530
 Material, 183
 component, 55, 90, 133, 145, 183, 192, 199, 208, 211, 242, 296, 306, 322, 331, 355, 414, 449, 479, 495
 forecasting, 65, 239
 group, 51, 177, 183, 318
 master, 191, 373
 master data, 116, 477
 number, 184, 193, 195, 220, 228, 242, 255, 258, 259, 334, 340
 planning, 21, 183, 201, 206, 212
 report, 479
 stock, 205, 326, 477
 Materials Requirement Planning (MRP), 297
 Measurement method, 347, 354
 Actual = Planned, 349
 Cost Proportional, 348
 Estimates, 349
 Milestones, 348
 Quantity Proportional, 348
 Secondary Proportionality, 349
 Start-Finish 0-100, 347
 Start-Finish 20-80, 347
 Time Proportionality, 347
 Microsoft Project, 494, 495
 summary task, 495
 task, 495
 Microsoft Project Server, 499
 Milestone, 45, 55, 67, 69, 114, 137, 145, 239, 251, 294, 337, 344, 348, 355, 450
 billing, 70, 252, 294
 fixed date, 70
 function, 71
 functions, 57
 group, 69, 533

Milestone, 45, 55, 67, 69, 114, 137, 145, 239, 251, 294, 337, 344, 348, 355, 450
 (Cont.)
identification, 69
individual overview, 449
trend analysis, 70, 121, 343, 542
 Missing part, 208, 479
 Model service specifications, 52
 MRP controller, 46, 65, 113, 186, 323
 MRS, 169
 Multiple language support, 74
 Multiproject monitor, 503

N

Network, 17, 20, 46, 138, 157, 183, 415, 479, 494, 498, 530
activity account assignment, 63, 185, 243, 297, 415, 474
customize structure, 59
functions, 21
graphic, 20, 86
header, 46, 47, 68, 148, 191, 208, 243
header account assignment, 63, 243
identification, 46
individual overview, 449
necessary customizing, 67
operative, 67, 111, 114
profile, 47, 64, 103, 122, 177, 182, 192, 239, 241, 309, 488, 532
release, 63
scheduling, 138, 145, 155
type, 47, 60, 61, 67, 150, 307, 309, 425, 532
 Network costing, 124, 212, 237, 244, 375, 379, 535
asynchronous, 238, 474
update, 238
 Non-stock item, 184, 188, 242, 323, 414
 Non-working time, 140
 Notification type, 360, 363
 Number assignment, 43, 61
 Number range, 60, 384, 386
intervals, 68

O

Object class, 30, 61
 Object currency, 27, 30, 218, 266, 271, 448
 Object dependencies, 111
global, 113
local, 113
procedure, 113
selection condition, 113
 Object links, 503, 507, 510, 512
 Object selection, 80, 367, 375, 411, 416, 441, 496
 Object service, generic, 74
 Object type, 74, 79, 87, 105, 155, 249, 350, 438
 Object-specific authorizations, 39
 OCI interface, 182, 194, 537
 Open order value, 405
 Open PS for Microsoft Project, 495
 Operative structure, 22
 Oracle Primavera, 494, 499
 Order, 47, 205, 209, 245, 274, 276, 294, 313, 366, 400, 435, 488
activity-assigned, 245
history, 406
individual overview, 449
start date, 228
type, 47, 61, 67, 117, 159, 171, 245, 274, 351, 363
value update, 274
value updating, 246, 363, 538
 Original budget, 263, 267, 539
 Outline agreement, 50, 177, 180, 318, 478
 Overall network scheduling, 115, 138, 148, 534
 Overall planning, 216, 234
 Overall profile, 485
 Overhead allocation, 435
 Overhead calculation, 545
 Overhead key, 378
 Overhead rate, 221, 224, 225, 228, 244, 372, 375

P

- PA transfer structure, 409, 425
- Parameter, 227
 - for network scheduling*, 145
 - for network type*, 61, 179, 243, 428, 429, 532
 - for subnetworks*, 67
- Partial confirmation, 291, 416
- Partner determination procedure, 28, 43, 257
- Partner overview, 449
- Payment, 238, 252, 451, 467, 475
 - data*, 470, 473
- Payment scheduling
 - automatic*, 474
 - manual*, 474
- Percentage of completion, 70, 294, 345, 350, 354
- Performance, 38, 80, 82, 94, 98, 130, 441, 453
 - improvement options*, 82
- Period-end closing, 204, 249, 295, 327, 365, 375, 420
- Person
 - qualification*, 166, 168
 - responsible*, 28, 44
 - work center assignment*, 167
- Personnel number, 307, 315
- Personnel resource, 161, 166, 486, 498
- Phase, 503
- Plan line item, 219, 222, 226, 244, 467
- Planned costs, 65, 215, 237, 261, 326, 394, 413, 514
- Planned date, 21
- Planned delivery time, 66, 140
- Planned order, 324, 334
- Planned order, individual overview, 449
- Planned settlement, 225, 244
- Planned total, 246
- Planner profile, 226, 250
- Planning
 - BW integrated*, 235
 - element*, 31, 215
 - layout*, 226, 250
 - method*, 137
- Planning (Cont.)
 - network*, 61, 204, 242, 415
 - open*, 137
 - period*, 89, 247
 - phase*, 186, 214, 239, 261
 - profile*, 31, 215, 218, 227, 232, 250, 537
 - round*, 237
 - stage*, 57
 - template*, 227
 - workforce*, 90, 148, 168, 486
- Planning board assistant, 89
- Planning board profile, 87, 91
- Planning data, 45, 124, 131, 254, 412, 420, 474, 511
 - transfer*, 421
- Plant, 28, 47, 220, 307
- Plant and network type, 64
- Plant maintenance order, 58, 90, 98, 149, 154, 156, 158, 245, 281, 313, 488
- Pool of confirmations, 311
- Position, 167
- Post-evaluation period, 92
- Posting specifications, 386
- PPM Customizing, 510
- PPM Portfolio Management, 501, 507
 - capacity planning*, 510
 - classification hierarchy*, 508
 - evaluation model*, 510
 - financial planning*, 510
 - financials integration*, 512
 - item*, 509, 511
 - portfolio*, 507
 - portfolio bucket*, 507
 - portfolio item*, 507
 - questionnaire*, 510
 - review*, 511
 - scoreboard*, 511
 - what-if scenario*, 511
- PPM Project Management, 501
 - controlling methods*, 505
 - controlling scenario*, 506
 - financials integration*, 505
 - project element*, 507
 - project type*, 506
 - resource planning*, 501

- PPM Project Management, 501 (Cont.)
 - roles*, 502
 - transfer*, 506
- PPM → SAP Portfolio and Project Management (PPM)
- Predecessor, 54
- Preevaluation period, 92
- Preliminary planning, 131, 213
- Preq → Purchase requisition
- Presales phase, 254
- Preview area, 84
- Price, 365, 369, 377
 - actual price*, 367, 371
 - calculation*, 420
 - planned price*, 370
- Pricing, 255, 341
- Print control, 66
- Priority, 33, 67, 140
- Process control, 367, 371
- Process costs, 221, 370
- Processing type, 366, 431, 434
- Procurement indicator, 192, 536
- Procurement type, 188, 193, 322
- Production order, 158, 245, 325, 328, 332, 334, 483
- Production resources and tools, individual overview, 449
- Professional Services, 157
- Profile for workforce planning, 536
- Profit, 249
 - center*, 28, 47, 363, 396, 427
- Profit and loss statement, 391
- Profitability, 249
- Profitability Analysis (CO-PA), 389, 396, 405, 409, 411, 420, 425, 426
- Program type, 280, 287, 540
- Progress analysis, 302, 345, 352, 543
- Progress Analysis Workbench, 317, 353, 542
- Progress tracking, 289, 320, 335, 355, 476, 542
 - date*, 356
 - event*, 356
 - event scenario*, 356
 - profile*, 357
 - status*, 357
- Progress version, 348, 352
- Project Builder, 82, 84, 94, 124, 228, 248, 254, 310, 529
- Project cache, 98
- Project Cash Management → PS Cash Management
- Project currency, 27
- Project definition, 25, 45, 134, 137, 154, 191, 205, 215, 227, 257, 262, 366, 425, 494, 529
 - identification*, 26
 - individual overview*, 449
- Project Editor, 94, 154
- Project implementation, 191, 252, 289, 502
- Project information database, 453
- Project Information System
 - Financials*, 123, 451, 469
 - Structures*, 208, 448, 451, 476, 479
- Project order, 186
- Project organization, 167
- Project Planner and Cost Estimator, 234, 438
- Project Planning Board, 87, 90, 124, 134, 156, 165, 310, 529
 - diagram section*, 88
 - scale profile*, 92
 - table section*, 88
 - time profile*, 92
 - time scale profile*, 92
- Project portfolio, 507
- Project priority, 43
- Project profile, 27, 37, 103, 137, 152, 154, 205, 215, 225, 257, 263, 300, 372, 382, 395, 425, 427, 531
- Project progress, 343
- Project stock, 28, 61, 187, 191, 203, 206, 242, 324, 332, 479
 - nonvaluated*, 204
 - valuated*, 204
- Project structure indicator, 399
- Project Structure Overview, 438, 448
- Project structuring, phase-based, 501
- Project summarization, 33, 38, 487
 - data summarization*, 490
 - inheritance*, 489

- Project summarization, 33, 38, 487
(Cont.)
summarization hierarchy, 491
- Project type, 33, 43, 109, 441, 487, 506
- Project version, 65, 70, 121, 122, 345, 446, 448, 530, 533
- Project-oriented procurement → ProMan
- Project-related payment data, 475
- ProMan, 289, 332, 335, 476, 542
exception profile, 336
ProMan profile, 336
- PS Cash Management, 239, 251, 467, 470, 473, 475, 549
- PS info profile, 439, 443, 449, 549
- PS network, 503
- PS text, 45, 55, 68, 74, 176
- Purchase order, 179, 205, 209, 274, 276, 295, 298, 318, 320, 323, 327, 334, 356, 359, 413, 470, 475, 477, 541
- Purchase requisition, 51, 177, 179, 182, 185, 205, 209, 233, 274, 277, 295, 298, 300, 317, 323, 327, 334, 359, 413, 470, 475, 477, 541
- Purchasing document, 129, 157, 179, 204, 291, 298, 317, 477
- Purchasing group, 51, 177, 183, 318
- Purchasing info record, 50, 177, 180, 193, 220, 228, 239, 242, 318, 334
- Purchasing organization, 51, 177, 220
- Q**

- Quotation creation, 254, 257
- Quotation phase, 123, 131, 257
- R**

- Ranking list, 460
- Rate, 219, 222, 232, 238, 243, 305
of capacity utilization, 160
type, 266
- Reduction, 61
strategy, 141
- Reference point, 197, 203, 537
- Relationship, 20, 46, 53, 89, 138, 155, 498
create, 67
external, 55
finish-finish relationship, 54, 87
finish-start relationship, 54, 86
individual overview, 449
start-finish relationship, 54
start-start relationship, 54, 138
time-dependent presentation, 86
- Release, 51, 80, 113, 123, 177, 208, 238, 270, 299, 432, 506, 539
procedure, 319
stop indicator, 71
- Remaining duration, 413
- Remaining work, 303, 413
- Replenishment lead time, 142, 208
- Report definition, 123, 167
- Report group, 462
- Report Painter, 226, 460, 463
- Report Writer, 463
- Reporting, 21, 43, 58, 69, 131, 161, 213, 239, 249, 262, 273, 281, 289, 326, 339, 359, 405
section, 28
selection criteria, 80
- Report-report interface, 457
- Requirement, 479
class, 116
grouping, 33, 205, 328
pegged, 479, 485
planning, 207, 323
planning run, 323
profile, 168
split, 486
type determination, 116
- Reservation, 148, 185, 191, 210, 300, 306, 323, 330, 334, 479
- Residence time, 61, 127
- Resource, 498
planning, 157, 498, 536
- Results analysis, 354, 389, 395, 411, 420, 435, 544
actual, 404
cost element, 396, 409, 425
key, 395, 396, 400, 404, 409, 426, 427

- Results analysis, 354, 389, 395, 411, 420, 435, 544 (Cont.)
 - method*, 389, 394, 396
 - planned*, 404
 - version*, 396, 402, 404
 - Retrieval, 128
 - Revenue element, 250
 - Revenue planning, 249, 259
 - RFC connection, 503
 - Role, 43, 234, 437, 495, 502
 - Rollup, 510
- S**
-
- Sales area, 331
 - Sales document, 250, 449
 - item*, 449
 - type*, 116, 119
 - Sales order, 118, 187, 191, 252, 331, 337, 340, 406, 411, 426, 470, 488
 - Sales organization, 119, 256, 341
 - Sales pricing, 29, 252, 256, 535
 - sales price basis*, 254
 - sales price view*, 255
 - SAP Advanced Planning and Optimization (APO), 186
 - SAP Business Content, 437
 - SAP BusinessObjects, 514
 - SAP Enterprise Project Connection (EPC), 499
 - SAP HANA, 376, 468
 - SAP List Viewer (ALV), 99, 447
 - SAP Multiresource Scheduling (MRS), 169
 - SAP NetWeaver Application Server, 499
 - SAP NetWeaver Business Client (NWBC), 234
 - SAP NetWeaver Business Warehouse (BW), 437
 - SAP Portfolio and Project Management (PPM), 262, 501
 - SAP Resource and Portfolio Management
 - SAP Portfolio and Project Management
 - SAP Supplier Relationship Management (SRM), 503
 - SAPscript format, 75
 - Schedule Manager, 367, 543
 - flow definition*, 368
 - task list*, 367
 - Scheduling, 56, 98, 114, 138, 292, 496
 - adjust basic dates*, 147
 - automatic*, 148
 - backward*, 139, 146
 - bottom-up*, 153
 - comparison*, 98, 154
 - current date*, 147
 - forward*, 138, 146
 - log*, 140, 148
 - method*, 152
 - only capacity requirements*, 147
 - parameter*, 59, 141, 145, 148, 149, 152, 173, 292, 536
 - scenario*, 153
 - start in the past*, 148
 - top-down*, 153
 - type*, 146, 536
 - Scope of check, 208
 - Selection criteria, 43
 - Selection profile, 95, 486
 - Selection variant, 441, 452
 - Selection version, 442
 - Separate hierarchy reports, 491
 - Service, 51, 140, 180, 241, 313, 320, 413
 - acceptance*, 321
 - element*, 55, 241, 320
 - entry*, 52, 313, 321
 - master record*, 52, 181
 - order*, 58, 98, 154, 245, 313, 488
 - Service specifications, 52, 180, 241
 - limit of values*, 182
 - model service specifications*, 181
 - standard service specifications*, 181
 - unplanned services*, 182
 - Service-Oriented Architecture (SOA), 493
 - Sets of date, 132, 156
 - Settlement, 78, 274, 287, 362, 371, 389, 400, 405, 420, 430, 435, 545
 - by cost element*, 423
 - cancellation*, 432
 - direct*, 434
 - full settlement*, 422

- Settlement, 78, 274, 287, 362, 371, 389, 400, 405, 420, 430, 435, 545 (Cont.)
 - line item*, 434
 - multilevel*, 434
 - periodic*, 422
 - profile*, 61, 421, 423, 425, 506
 - receiver*, 420, 434
 - rule*, 39, 62, 96, 395, 400, 420, 423, 425, 428, 545
 - settlement by amount*, 421
 - settlement type*, 422, 433
 - structure*, 423
- Shift sequence, 161
- Shipping point, 331
- Ship-to party, 331
- Shop paper, 66
- Short and long texts, 74
- Short identification, 29
- Short text, 26, 74
- Simplified reporting, 437
- Simulation profile, 124, 533
- Simulation version, 121, 123, 126, 233, 245, 251, 257, 446, 502
- Size, 187
- Source assignment, 422
- Source cost element, 423
- Source structure, 425, 433
- Special maintenance function, 92
- Standard BOM, 211
- Standard milestone, 69, 530
- Standard network, 67, 71, 76, 113, 115, 119, 129, 211, 530
 - activity*, 67
 - header*, 67
 - profile*, 68
- Standard project definition, 44
- Standard report, 123, 273, 437
- Standard service specifications, 52
- Standard structure, 22, 113, 438
- Standard system status, 45
- Standard WBS element, 44
- Standard work breakdown structure, 44, 116, 282
- Start-start relationship, 54, 139
- Statistical key figure, 36, 212, 247, 351, 419
- Status, 29, 38, 68, 76, 122, 126, 164, 174, 177, 211, 226, 282, 371, 376, 389, 413, 432, 441, 510
 - combination code*, 80, 441, 531
 - confirmed*, 290, 304
 - created*, 322
 - deletion flag*, 362
 - management*, 75, 305, 511
 - partially confirmed*, 290
 - partially released*, 290
 - profile*, 39, 45, 61, 79, 531
 - released*, 363, 398
 - selection profile*, 440, 452, 477
 - selection schema*, 367
 - transaction analysis*, 76
- Stock item, 184, 189, 242, 323, 415
- Stock management, 28, 116, 184, 200, 242
- Strategy, 39, 222, 232, 243, 306, 426
- Structure information system, 121
- Structure overview, 123, 435, 438, 443, 449
 - functions*, 446
- Structure planning, 216
- Structure tree, 83, 145, 228, 335, 355, 418, 468
- Structuring, 17, 19
 - function-based*, 24
 - organizational*, 24
 - phase-based*, 24
- Subnetwork, 57, 67, 68, 114, 149
 - include*, 72
- Subnetwork Monitor, 150
- Substitution, 38, 65, 107, 531
- Successor, 54, 86, 138, 155
- Summarization, 442, 487, 546
- Summarization hierarchy, 488
- Summarized accounting data, 491
- SV value, 346
- System status, 45, 76, 78, 267, 274, 292, 295, 302, 305, 354, 361, 362, 398, 404, 408, 429, 434, 441

T

- Table control, 103
- Template, 45, 68, 81, 377, 458, 465, 502
- Template allocation, 221, 377, 379, 435, 544
 - environment*, 378
 - method*, 377, 380
- Templates area, 83
- Test run, 272, 367
- Text item, 196
- Third-party order, 188, 193
- Threshold value violation, 503
- Time scale assistant, 89
- Time scheduling, 66, 132, 174, 416, 498, 501
- Time sheet, 543
- Time ticket, 66
- Transaction, 92
 - BAPI*, 494
 - CAT2 (Enter Working Times)*, 314
 - CJ11 (Create Single Element)*, 94
 - CJ20 (Structure Planning Change Project)*, 92
 - CJ20N (Project Builder)*, 82
 - CJ29 (Project Scheduling)*, 151
 - CJ2B (Project Planning Board Change Project)*, 87
 - CJ30 (Change Original Budget)*, 263, 279
 - CJ31 (Display Original Budget)*, 279
 - CJ32 (Change Release)*, 270
 - CJ36 (To Project, Supplement)*, 268
 - CJ37 (In Project, Supplement)*, 268
 - CJ40 (Costs in WBS, Change Total)*, 217, 219, 223, 227
 - CJ42 (Detailed Planning Revenues)*, 250
 - CJ44 (Actual Overhead Rate, Individual Processing)*, 375
 - CJ45 (Actual Overhead Rate, Collective Processing)*, 375
 - CJ46 (Planned Overhead Rate, Individual Processing)*, 375
 - CJ47 (Planned Overhead Rate, Collective Processing)*, 375
- Transaction, 92 (Cont.)
 - CJ88 (Settlement, Individual Processing)*, 430
 - CJ8G (Settlement, Collective Processing)*, 430
 - CJ8V (Define Selection Variants for Collective Processing)*, 367
 - CJ91 (Standard Work Breakdown Structure)*, 45
 - CJ9E (Settlement, Individual Processing)*, 430
 - CJ9G (Settlement, Collective Processing)*, 430
 - CJ9K (Network Costing)*, 238, 474
 - CJ9L (Cost Forecast, Individual Processing)*, 416
 - CJ9M (Cost Forecast, Collective Processing)*, 416
 - CJA1 (Incoming Orders, Collective Processing)*, 411
 - CJA2 (Incoming Orders, Individual Processing)*, 411
 - CJB1 (Settlement Rule, Collective Processing)*, 427
 - CJB2 (Settlement Rule, Individual Processing)*, 427
 - CJBV (Activate Availability Control)*, 278
 - CJBW (Deactivate Availability Control)*, 278
 - CJCF (Commitment Carryforward)*, 272
 - CJCO (Budget Carryforward)*, 272
 - CJE0 (Execute Report)*, 458
 - CJE1 (Create Report)*, 458
 - CJE2 (Change Report)*, 458
 - CJE3 (Display Report)*, 458
 - CJE4 (Create Form)*, 458
 - CJE5 (Change Form)*, 458
 - CJE6 (Display Form)*, 458
 - CJEN (Rebuild Project Information Database)*, 475
 - CJFN (Payment Transfer)*, 475
 - CJH1 (Inheritance)*, 489
 - CJIC (Settlement, Line Item Apportionment)*, 434

- Transaction, 92 (Cont.)
- CJK2 (Change Statistical Key Figures (Network))*, 247
 - CJN1 (Revaluation Actual Prices, Individual Processing)*, 371
 - CJN2 (Revaluation Actual Prices, Collective Processing)*, 371
 - CJR2 (Change Costs/Activity Input)*, 223, 227, 251
 - CJS2 (Change Statistical Key Figures (WBS Element))*, 247
 - CJSG (Generate WBS Element Group)*, 227
 - CJV2 (Change Simulation)*, 124
 - CJV4 (Transfer Project)*, 124
 - CJV5 (Delete Simulation)*, 124
 - CJV6 (Administration Data)*, 124
 - CJVC (Check Assignment)*, 452
 - CJZ1 (Actual Interest Calculation, Collective Processing)*, 387
 - CJZ2 (Actual Interest Calculation, Individual Processing)*, 387
 - CJZ3 (Planned Interest Calculation, Individual Processing)*, 387
 - CJZ5 (Planned Interest Calculation, Collective Processing)*, 387
 - CKCM (Models for Easy Cost Planning)*, 230
 - CL02 (Create Class)*, 112
 - CLM1 (Create Claim)*, 360
 - CLM2 (Change Claim)*, 360
 - CLM3 (Display Claim)*, 360
 - CM07 (Capacity Load Variable View)*, 480
 - CM25 (Capacity Planning, Variable Leveling)*, 480
 - CM51 (Individual Capacity Evaluation View)*, 486
 - CM53 (WBS Element/Version)*, 485
 - CMP2 (Workforce Planning for Personnel Resources, Project View)*, 167
 - CMP3 (Workforce Planning for Personnel Resources, Work Center View)*, 169, 172
 - CMP9 (Workforce Planning for Personnel Resources, Evaluation)*, 170, 173
- Transaction, 92 (Cont.)
- CN01 (Create Standard Network)*, 67
 - CN04 (Edit Project Texts)*, 74
 - CN08 (Edit Network Parameters from Sales Order)*, 119
 - CN11*, 69
 - CN11 (Create Standard Milestone)*, 69
 - CN22 (Change Network)*, 148
 - CN24 (Overall Network Scheduling)*, 148
 - CN24N (Overall Network Scheduling (New))*, 148
 - CN25 (Confirmation, Individual Confirmation)*, 310, 312
 - CN27 (Confirmation, Collective Confirmation)*, 311
 - CN29 (Confirmation, Cancel/Reverse Individual Confirmation)*, 307
 - CN33 (Bill of Material Transfer)*, 197
 - CN41 (Structure Overview)*, 121, 123, 443
 - CN41N (Project Structure Overview)*, 447
 - CN42 (Enhanced Individual Overviews Project Definition)*, 449
 - CN43 (Enhanced Individual Overviews WBS Elements)*, 449
 - CN44 (Enhanced Individual Overviews Planned Orders)*, 449
 - CN45 (Enhanced Individual Overviews Orders)*, 449
 - CN46 (Enhanced Individual Overviews Networks)*, 449
 - CN47 (Enhanced Individual Overviews Activities/Elements)*, 449
 - CN48 (Enhanced Individual Overviews Confirmations)*, 449
 - CN49 (Enhanced Individual Overviews Relationships)*, 449
 - CN50 (Enhanced Individual Overviews Capacity Requirements)*, 449
 - CN51 (Enhanced Individual Overviews Production Resources and Tools)*, 449
 - CN52 (Enhanced Individual Overviews Components)*, 449
 - CN53 (Enhanced Individual Overviews Milestones)*, 449

Transaction, 92 (Cont.)

CN60 (*Change Documents for Project/Network*), 449
 CN72 (*Create Project Version*), 121
 CN80 (*Archiving Project Structures*), 128
 CNACLD (*Delete Access Control List*), 23
 CNE1 (*Progress Determination, Individual Processing*), 353
 CNE2 (*Progress Determination, Collective Processing*), 353
 CNFOWB (*Forecast Workbench*), 417
 CNL1 (*Create Delivery Information*), 331
 CNMASS (*Mass Change*), 105
 CNMM (*Project-Oriented Procurement (ProMan)*), 333
 CNMT (*Milestone Trend Analysis*), 344
 CNPAR (*Partner Overview*), 449
 CNPAWB (*Progress Analysis Workbench*), 354
 CNR1 (*Create Work Center*), 158
 CNS0 (*Delivery from Project*), 331
 CNS54 (*Enhanced Individual Overviews Sales Documents*), 449
 CNS55 (*Enhanced Individual Overviews Sales Document Items*), 449
 CNSKFDEF (*Defaults for Project Elements*), 249
 COMPXPD (*Progress Tracking*), 356
 CP26 (*Change Process Quantities/Prices*), 379
 CP11 (*Price Calculation*), 370
 CPTK (*Actual Template Allocation, Individual Processing*), 379
 CPTL (*Actual Template Allocation, Collective Processing*), 379
 CPOK (*Plan Template Allocation, Individual Processing*), 379
 CPUL (*Plan Template Allocation, Collective Processing*), 379
 CT04 (*Create Characteristics*), 112
 CU01 (*Object Dependencies*), 113
 CU41 (*Create Configuration Profile*), 113
 DP81 (*Sales Pricing*), 254
 DP82 (*Sales Pricing Project*), 254

Transaction, 92 (Cont.)

DP91 (*Resource-Related Billing Document*), 340
 DP93 (*Billing Between Company Codes*), 343
 FB60 (*Vendor Invoices*), 298
 FCOM_ECP_GEN (*Cost Estimate, Template Configuration*), 233
 FMWA (*Create Funds Transfer*), 475
 FMZ1 (*Create Funds Commitment*), 298
 FMZ6 (*Reduce Funds Commitment*), 298
 GR31 (*Create Report*), 465
 GR51 (*Create Report Group*), 465
 GR55 (*Execute Report Group*), 465
 GRR1 (*Create Report*), 465
 GRR2 (*Change Report*), 465
 GRR3 (*Display Report*), 465
 IM32 (*Edit Original*), 282
 IM34 (*Plan Proposal*), 282
 IM35 (*Edit Program Planning*), 282
 IM52 (*Edit Budget Distribution*), 283
 IMCBR3 (*Mass Release of Budget for Projects*), 271
 IMCCP3 (*Transfer Plan to Project Budget*), 272
 IMCOC3 (*Plan/Budget Consistency Check for Projects*), 272
 IMCRC3 (*Currency Recalculation of Plan/Budget for Projects*), 272
 IMPBA3 (*Adjust Plan/Budget to Agree with Assigned Values for Projects*), 272
 KAH1 (*Create Cost Element Group*), 462
 KB21N (*Enter Activity Allocation*), 298
 KB31N (*Enter Statistical Key Figures*), 249
 KBC6 (*Enter Actual Price*), 379
 KBK6 (*Enter Actual Price*), 379
 KKA2 (*Execute Results Analysis, Individual Processing*), 404
 KKA2P (*Execute Results Analysis, Individual Processing*), 404
 KKAJ (*Execute Results Analysis, Collective Processing*), 404
 KKAJP (*Execute Results Analysis, Collective Processing*), 404

- Transaction, 92 (Cont.)
- KKE1 (Create Base Planning Object)*, 221
 - KKG2 (Enter Costs of Sales)*, 404
 - KKR0 (Summarization Hierarchy)*, 488
 - KKRC (Summarization)*, 490
 - KP26 (Change Activity Output/Prices)*, 379
 - KSII (Price Calculation)*, 370
 - MD51 (MD51 Project)*, 324
 - ME21N (Create Purchase Order, Vendor/ Supplying Plant Known / Vendor Unknown / Via Requisition Assignment List / Automatically via Purchase Requisitions)*, 298
 - ME2J (Purchase Orders for Project)*, 477
 - ME2K (Purchase Orders for Account Assignment)*, 478
 - ME3K (Outline Agreements)*, 478
 - ME51N (Create Purchase Requisition)*, 298
 - ME5J*, 477
 - ME5J (Orders for Project)*, 477
 - ME5K (Purchase Requisitions for Account Assignment)*, 478
 - MIGO (Goods Movements)*, 298
 - ML81N (Maintain Service Entry Sheet)*, 321
 - MR21 (Change Price)*, 326
 - OKKP (Maintain Controlling Area)*, 295
 - OKP1 (Change Period Lock)*, 371
 - OPH5 (Successive Document Transfer)*, 475
 - OPH6 (Complete Document Transfer)*, 475
 - OPI1 (Define Value Categories)*, 452
 - OPI2 (Assign Cost Elements)*, 452
 - OPI4 (Assign Commitment Items)*, 452, 473
 - OPIC (Define Interest Relevance)*, 386
 - OPIH (Define General Terms)*, 382
 - OPSM (Define Overall Profile for Information System)*, 443
 - OPSV (Define Order Value Updating for Orders for Projects)*, 246
 - OPTS (Version Profile)*, 122
- Transaction, 92 (Cont.)
- OPTT (Account Assignment Categories and Document Types for Purchase Requisitions)*, 182
 - OPUU (Maintain Network Profiles)*, 182
 - OPUV (Specify Parameters for Network Type)*, 179
 - OVZG (Requirements Class)*, 117
 - PFCG (Roles)*, 234, 495
 - PPPM (Change Profile)*, 168
 - PSHLP10 (Project Worklist)*, 99
 - PSHLP20 (Project Editor)*, 94, 154
 - PSHLP30 (Draft Workbench)*, 97
 - PSHLP90 (Administrator Workbench)*, 98
 - RSOR (Data Warehousing Workbench)*, 237
 - SARA (Archiving)*, 128
 - SCAL (Define Factory Calendar)*, 134
 - SCMA (Schedule Manager)*, 367
 - SE16 (Data Browser)*, 462
 - SE36 (Logical Databases)*, 441
 - SU01 (Maintain Users)*, 439
 - WPS1 (Maintenance Event Builder)*, 59
- Transaction currency, 27, 218, 266, 381
- Transfer mode, 500
- Transfer report, 313
- Treasury, 470
- ## U
-
- Unit costing, 219, 241, 264, 375, 379
- Usage, 73, 159
- User field, 34, 44, 67, 161, 496
- User status, 76, 219, 267, 278, 305, 307, 354, 361, 428, 441
- influence*, 80
 - initial*, 80
 - next action*, 80
 - profile*, 76, 79
 - status number*, 79
- ## V
-
- Validation, 38, 65, 109, 531
- message*, 110

Valuation area, 385, 422
 Valuation method, 395, 396, 404
 Valuation variant, 222, 232, 243, 372
 Value category, 385, 409, 452, 473, 549
 Value type, 32, 326, 410, 464, 475
 Variable, 455
 Variance reason, 305
 Variant, 104, 111, 155, 202, 238, 500
 Variant configuration, 63, 82, 111
 Variation, 464
 Vendor, 176, 477
 selection, 178, 318
 Version, 22, 120
 comparison, 125
 key, 124
 profile, 38, 122
 Versioning, 75
 View
 cumulative, 265
 current budget, 270
 distributable, 265
 original budget, 263
 planned total, 263, 270
 previous year, 265
 remainder, 265

W

Warning, 275
 Warning message, 501
 WBS
 structure customizing, 36
 WBS element, 18, 23, 25, 29, 45, 69,
 132, 134, 167, 183, 205, 214, 223,
 247, 250, 252, 261, 284, 290, 294,

298, 299, 354, 366, 421, 474, 489,
 495, 505, 507, 535
 grouping, 206
 identification, 29, 46
 individual overview, 449
 integrated planning, 244
 statistical, 32, 298
 top WBS element, 285
 WBS objects, identify, 39
 WBS scheduling, 138, 151, 155, 536
 Work, 49, 161
 Work area, 85
 Work breakdown structure (WBS), 17,
 46, 118, 157, 213, 228, 290, 494, 529
 functions, 19
 level, 23
 operational, 22
 operative, 114
 standard, 76
 Work breakdown structure element →
 WBS element
 Work calculation, 248
 Work center, 49, 54, 90, 140, 158, 160,
 166, 238, 303, 305, 309, 315, 481,
 486, 498, 534
 category, 159, 536
 hierarchies, 487
 Workflow, 72, 113, 282, 309, 319, 360,
 368, 511
 Workforce planning, 166
 for personnel resources, 534
 project view, 170
 work center view, 172
 Working time attribute, 312
 Worklist, 83, 315