

# Molex Premise Networks Systems Catalogue



**PREMISE  
NETWORKS**  
A Division of Molex

# New



# Solution



Welcome to the new edition of our Systems Catalogue, which incorporates exciting new additions to our already extensive product portfolio. Molex Premise Networks takes pride in providing high quality innovative products and we constantly strive to improve and expand our range to address our customer's needs.

## New Category 6 Product Range

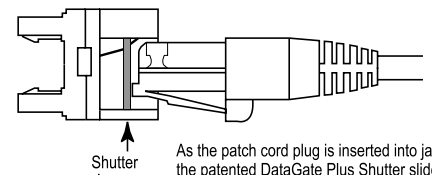
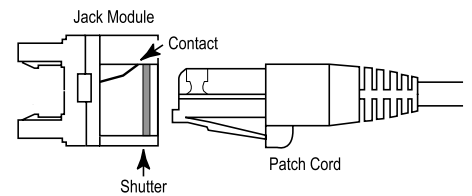
We are pleased to introduce our brand new PowerCat 6 solution, featuring the new DataGate Plus™ connector in both the patch panel and wall outlet products. This RJ45 jack is designed with an integral shutter that not only protects it from dust and contaminants but also, by virtue of its spring loaded design, ejects any patch cords that are improperly inserted virtually eliminating the problem of faulty connections.

To complement the DataGate Plus connector, we have designed a new range of wall outlets that combine functionality with aesthetics. The new Contura™ product range is modular in design and has a sleek curved appearance that looks great in any modern office environment. The updated MOD-SNAP III module is ideal for use in floor box applications.

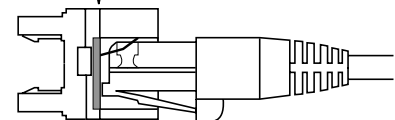
The new Synergy™ Wall Plate is ideal for use where space is limited, allowing a high port density in a UK standard wall plate size. Synergy Surface Mount Boxes offer simple, organised installation in areas where surface mount is the only option.

All of these new wall plate products have been designed for ease of installation and reliable cable management and have integral labelling facilities for accurate cable documentation.

DataGate Plus Shutter Operation



As the patch cord plug is inserted into jack opening, the patented DataGate Plus Shutter slides to the back wall of the jack module - out of sight.



## Communications Room

For high density Communications Room applications, our Category 6 Premise Distribution System provides the answer. This cross-connect system can be either wall or rack mounted - dependent on the specific application.

The new PowerCat 6 solution is fully compliant with TIA/EIA 568B.2-1, ISO/IEC 11801:2002 and EN 50173:2002 standards and is fully backwards compatible with Category 5e systems. These products are also backed by our 25 year Product, Systems Performance & Applications Assurance warranty.



# from Molex Premise Networks



## Independent Testing

As demands on the capability of the network continue to increase, it is important that you can rely on the product you are selecting for your cabling infrastructure. When choosing a Category 6 system, it is vital that you can be assured of a consistently high performance product.

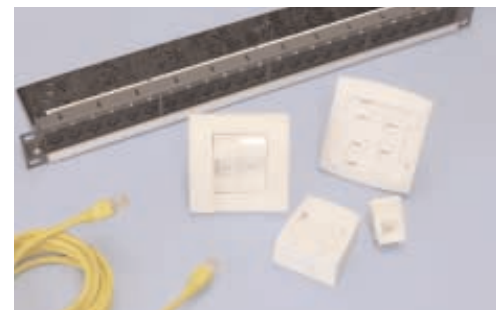
All the components in the new PowerCat 6 range have been independently tested by Intertek ETL SEMKO and verified for Category 6 component compliance and tested for channel compliance. The Intertek verification programme objectively tests manufacturers' connectivity hardware for compliance with the relevant Industry Standards.



A certificate of conformance from Intertek certifies that the product has been found to be compliant with the relevant industry standards and is in the Intertek verification programme. The Intertek verification programme continuously monitors the product via random sample testing.

For more detailed information on the independent testing or our Category 6 products - visit our web site: [www.molexpn.co.uk/cat6](http://www.molexpn.co.uk/cat6)

The new PowerCat 6 system is the premier Molex Premise Networks UTP product range and will effortlessly support any UTP application in the market today.





**New Product Range**

**PowerCat 6 Cable**

Molex Premise Networks PowerCat 6 four pair cable has been designed to support high-speed data transmission systems. The cable features a cross-member designed to keep individual pairs separated for the reduction of NEXT and ELFEXT. The cable is available in PVC and LSZH sheaths on 500m reels.

- Unshielded 4 Pair PVC and LSZH Cable
- Central separator for the reduction of NEXT & ELFEXT
- Colour coded pairs for ease of termination
- 500 metre reel



Order No.	Description
Contact Customer Services	4 Pair Cable 500m Reel, PVC, UTP, Cat 6
Contact Customer Services	4 Pair Cable 500m Reel, LSZH, IEC 332.1, UTP, Cat 6

**PowerCat 6 Patch Panels**

PowerCat 6 Patch Panels feature the shuttered DataGate Plus™ Connector which is dual colour coded for either 568A or 568B wiring. The panels come complete with an integral cable management tray for cable strain relief and tidy cable dressing. Available in 24 or 48 port versions, with front and rear port labelling. Individual ports can be colour coded using an icon for site-specific network administration.

- Shuttered DataGate Plus RJ45
- 24 Port 1U, 48 Port 2U
- EIA 568A/B colour coded
- Integral rear cable management tray
- Standard 19" mounted
- Graphite grey finish
- ETL verified



Order No.	Description
PID-00141-EU	24 Port Patch Panel, 1U, RJ45, 568A/B, UTP, Cat 6
PID-00142-EU	48 Port Patch Panel, 1U, RJ45, 568A/B, UTP, Cat 6
CSP-00021**	Connector Icon Labels (10 per pack)

\*\* Colour Options - 01 = Almond, 02 = White, 04 = Black, 05 = Ivory, 08 = Grey, BL = Blue, GR = Green, PP = Purple, RD = Red, RG = Orange, YL = Yellow

See Page 21 for our range of Cable Management Products

**PowerCat 6 Patch Cords**

Molex Premise Networks PowerCat 6 patch cords are manufactured using high quality unshielded four pair Category 6 stranded cable. Available in a range of colours and lengths, PowerCat 6 patch cords are pre-terminated with RJ45 plugs and feature cable strain relief boots with a plug latch protection cap.

- Unshielded 4 pair stranded cable
- Pre-terminated with WE8W plugs
- Strain relief boots
- ETL verified



Order No.	Description
PCD-00207-0*	Patch Cord, 1m, RJ45, UTP, Cat 6
PCD-00208-0*	Patch Cord, 2m, RJ45, UTP, Cat 6
PCD-00209-0*	Patch Cord, 3m, RJ45, UTP, Cat 6
PCD-00210-0*	Patch Cord, 5m, RJ45, UTP, Cat 6
PCD-00214-0*	Patch Cord, 7m, RJ45, UTP, Cat 6
PCD-00211-0*	Patch Cord, 10m, RJ45, UTP, Cat 6

\* Colour Options - C = Red, E = Grey, H = Blue, J = Green, K = Yellow - Other colours available subject to MOQ, contact Customer Services

**PowerCat 6 Angled MOD-SNAP**

**III Module**

The Angled MOD-SNAP Module is ideal for floor box applications. The product is a fully assembled unit featuring the shuttered DataGate Plus connector in a 37.5 x 22mm fascia (BT6C size). The angled design reduces patch cord bend radius particularly in shallow floor box installations. The Angled MOD-SNAP Module can also be used in the MOD-SNAP range of wall plates.

- Shuttered RJ45 DataGate Plus connector
- Protected labelling facility
- Floor box and wall plate compatible
- ETL verified



Order No.	Description
MMS-00013-02	Angled DataGate Plus MOD-SNAP Module, RJ45, 568A/B, UTP, Cat 6 - White
MMS-00014-02	MOD-SNAP Blank Module - White



## New Product Range

### PowerCat 6 Contura™ Modular Wall Outlets

Molex Premise Networks new wall outlet range is designed to combine aesthetics with functionality. The contemporary design of the products is ideal for the modern office and provides the user with the flexibility of installing as many modules as required. The product family consists of Single and Double Gang Wall Plates with grid plate, a shuttered DataGate Plus Module and a Blank Module. The angled design of the module reduces patch cord bend radius and features a protected labelling feature. Individual ports can be colour coded for site-specific network administration, by using connector icon labels.

- Contemporary Design
- Single and Double Gang Wall Plates
- Shuttered RJ45 DataGate Plus Module
- Protected labelling facility
- Single gang - 86 x 86mm - external  
50 x 45mm - internal aperture
- Double gang - 86 x 145mm - external  
50 x 90mm - internal aperture
- Module and Blank 50 x 22mm
- ETL verified



Order No.	Description
WGB-00001-02	Single Gang Wall Plate (includes grid plate) - White
WGB-00002-02	Double Gang Wall Plate (includes grid plate) - White
MGB-00001-02	Angled DataGate Plus RJ45 module, 568A/B, UTP, Cat 6 - White
MGB-00002-02	Blank Module
CSP-00021-**	Connector Icon Labels

\*\* Colour Options - 01 = Almond, 02 = White, 04 = Black, 05 = Ivory, 08 = Grey, BL = Blue, GR = Green, PP = Purple, RD = Red, RG = Orange, YL = Yellow

### PowerCat 6 Fixed Synergy™ Wallplates

Fixed Synergy Wallplates are ideal for space-limited areas such as power-poles and desk-top trunking, or areas where a fixed number of ports are to be installed and modularity is not required. The products fit a standard UK back box (86 x 86mm outer dimension) and come complete with 1, 2 or 4 DataGate Plus shuttered connectors and fixing screws.

- UK standard 86 x 86mm fascia
- Contemporary design
- Protected labelling facility and service I.D. icons
- Ideal for space-limited areas
- ETL verified



Provision for site-specific labelling is a useful feature and individual ports can also be colour coded using connector icon labels.

Order No.	Description
WSY-00021-02	1 Port, RJ45, 568A/B, UTP, Cat 6 - White
WSY-00022-02	2 Port, RJ45, 568A/B, UTP, Cat 6 - White
WSY-00023-02	4 Port, RJ45, 568A/B, UTP, Cat 6 - White

### PowerCat 6 Synergy™ Surface Boxes

Synergy Surface Boxes are ideal for use in open office cabling. The attractive contemporary design of the product family comprises of 1, 2, 4 and 6 port variants complete with the DataGate Plus shuttered connector. Synergy Surface Boxes offer simple, organised installation in areas where surface mount is the only option. Cable can be installed from the sides or base of the box. Screw fixings are provided and port identification is easy using the icons and the protected labelling feature provided. Individual ports can also be colour coded for site-specific network administration using connector icon labels.

- Stylish design
- Simple, organised cable entry and installation
- Screw fixing
- Clear and concise labelling
- ETL verified



Order No.	Description
SBX-00005-02	1 Port, RJ45, 568A/B, UTP, Cat 6 - White
SSY-00007-02	2 Port, RJ45, 568A/B, UTP, Cat 6 - White
SSY-00008-02	4 Port, RJ45, 568A/B, UTP, Cat 6 - White
SSY-00009-02	6 Port, RJ45, 568A/B, UTP, Cat 6 - White
CSP-00021-**	Connector Icon Labels

\*\* Colour Options - 01 = Almond, 02 = White, 04 = Black, 05 = Ivory, 08 = Grey, BL = Blue, GR = Green, PP = Purple, RD = Red, RG = Orange, YL = Yellow

**The PowerCat™ UTP Product Range**

■ Molex Premise Networks Category 5e product range is known as the PowerCat system. Designed to meet or exceed the requirements of: TIA/EIA 568B.2, ISO/IEC 11801:2002, EN 50173:2002 standards.

■ The product range offers backwards compatibility with Category 5 systems, with enhanced performance.

**PowerCat UTP Cable**

Molex Premise Networks PowerCat UTP four pair cable is available in PVC, LSZH, IEC 332.1 and IEC 332.3 variants. Cables can be purchased in 305m boxes or 1km reels.

- Unshielded 4 pair PVC and LSZH Cable
- Colour coded pairs for ease of termination
- 305m easy spool box and 1 km reel available



Order No.	Description
Contact Customer Services	4 Pair Cable, 305m Box, PVC, UTP, Cat 5e
Contact Customer Services	4 Pair Cable, 1km Reel, PVC, UTP, Cat 5e
Contact Customer Services	4 Pair Cable, 305m Box, LSZH, IEC 332.3, UTP, Cat 5e
Contact Customer Services	4 Pair Cable, 1km Reel, LSZH, IEC332.3, UTP, Cat 5e
Contact Customer Services	4 Pair Cable, 1km Reel, LSZH, IEC332.1, UTP, Cat 5e
Contact Customer Services	4 Pair Cable, 305m Box, LSZH, IEC332.1, UTP, Cat 5e

**20 Port Modular Panel**

The 20 Port Modular Panel is a flexible patching solution. Patch Panel and Modules are ordered separately and can be configured to provide the ports required with additional space for system growth. Blanks fill unused ports. The modules snap-in easily and can be removed if required, by simply pressing the latching features on the front of the modules. The module is compatible with both 568A and 568B wiring specifications. The unloaded

panel features an integral rear cable management tray for ease of installation and cable dressing. The 4 Port Category 5e modules features individual labelling front and rear for site-specific network administration.

- Unloaded 20 port panel
- Integral cable management
- 4 port module



Order No.	Description
MMP-00001-04	4 Port Module, RJ45, 568A/B, UTP, Cat 5 - Black
MMP-00003-04	4 Port Module Blank - Black
PID-00136	Unloaded 20 Port Patch Panel

**PowerCat UTP Patch Panels**

Molex Premise Networks patch panels are a versatile means for connecting horizontal cabling. Featuring an integral rear cable management tray for ease of installation and cable dressing. Port labelling is also featured for site specific network administration.

- 24 Ports 1U or 48 Ports 2U
- PCB mounted KATT IDC
- EIA 568B wired
- Standard 19" rack mounted
- Graphite grey textured finish
- Integral cable management tray

Suitable for high speed data transmission, Molex Premise Networks patented KATT IDC is terminable using industry standard tooling. Fixing kit, cable ties and installation instructions are included.



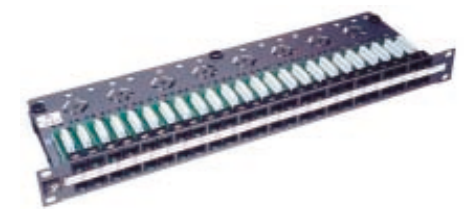
Order No.	Description
27.1B.241.A005G	24 Port Patch Panel - With Cover, 1U, RJ45 568B UTP Cat 5e
PID-00058*	24 Port Patch Panel, 1U, RJ45 568B UTP Cat 5e
PID-00059*	48 Port Patch Panel, 2U, RJ45 568B UTP Cat 5e

\* Product is available without "Port Identification Markings" - Contact Customer Services for Part No's.

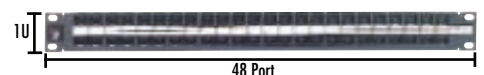
**PowerCat UTP High Density Patch Panels**

Molex Premise Networks PowerCat Cat 5e High Density Patch Panels are ideal for installations where cabinet/rack space is at a premium. Providing 32 or 48 ports in 1U, these patch panels offer an integral rear cable management tray specifically designed for neat and easy cable dressing. The front of the panel has a clear port labelling.

- PowerCat (Cat 5e) performance
- 32 Ports 1U or 48 Ports 1U
- PCB mounted KATT IDC
- EIA 568B wired
- Standard 19" rack mounted
- Graphite grey textured finish
- Integral cable management tray



Order No.	Description
PID-00073	48 Port PowerCat Patch Panel, 1U, RJ45, 568B, UTP - Cat 5e
PID-00074	32 Port PowerCat Patch Panel, 1U, RJ45, 568B, UTP - Cat 5e



See Page 21 for our range of Cable Management Products

**PowerCat UTP Patch Cords**

Molex Premise Networks PowerCat patch cords are manufactured using high quality Category 5E stranded cable. Available in a range of colours and lengths, PowerCat patch cords are pre-terminated with RJ45 plugs and feature a slim-line strain relief boot and a plug latch protection cap.

- Unshielded 4 Pair stranded cable
- Pre-terminated with WE8W Plugs
- Strain Relief Boots



Order No.	Description
PCD-00180-0*	Patch Cord 1m, RJ45, UTP, Cat 5e
PCD-00181-0*	Patch Cord 2m, RJ45, UTP, Cat 5e
PCD-00182-0*	Patch Cord 3m, RJ45, UTP, Cat 5e
PCD-00183-0*	Patch Cord 5m, RJ45, UTP, Cat 5e
PCD-00190-0*	Patch Cord 7m, RJ45, UTP, Cat 5e
PCD-00184-0*	Patch Cord 10m, RJ45, UTP, Cat 5e

\* Colour Options - C = Red, E = Grey, H = Blue, J = Green, K = Yellow. Other colours available subject to MOQ, contact Customer Services

**PowerCat MOD-SNAP & Euromod Modules**

The MOD-SNAP & Euromod modular systems provide a flexible and versatile method of installation, allowing the user the choice of installing as many data outlets as required. The modules are fully assembled units featuring the low profile Cat 5e RJLP connector and a 37.5x22mm fascia (BT 6C size, MOD-SNAP) or 25x50mm fascia (Euromod), shutter and spring assembly.

- Enhanced performance RJ45 RJLP connector
- Space saving low profile design enables installation in shallow backboxes and trunking
- Spring loaded shutter
- Protected labelling facility
- MOD-SNAP compatible with MOD-SNAP wallplates
- Ideal for floorbox applications (MOD-SNAP)
- Euromod compatible with Euromod wallplates
- 568B wired



Molex Premise Networks unique patented RJLP RJ45 connector offers a low profile, space saving design that enables installation in shallow backboxes and trunking.

Order No.	Description
42.1B.011.A0032	MOD-SNAP RJLP Module, RJ45, 568B, Cat 5e - White
17.1B.011.A0042	Euromod RJLP Module, RJ45, 568B, Cat 5e - White
MEU-00019-02	Angled Euromod RJLP Module, RJ45, 568B, Cat 5e - White
MMS-00007-02	Angled MOD-SNAP RJLP Module RJ45, 568B, Cat 5e - White
MMS-00014-02	MOD-SNAP Blank Module - White
17-0412-02	Euromod Quarter (12.5x50mm) Blank - White
17-0413-02	Euromod Half (25x50mm) Blank - White
17-0414-02	Euromod Full (50x50mm) Blank - White



For Wallplate options, please see wallplate section on Page 10

**PowerCat Office Block**

Designed in accordance with TSB75, Office Block is the ideal solution for open office cabling. Its attractive and compact design facilitates a simple, organised installation for areas where space is limited. Designed to support high speed data transmission systems, Office Block utilises the Molex RJSE connector.

- Compact, attractive and versatile 1, 2, 4 & 6 port surface mount block
- Cable entry from rear knockouts
- Labelling facility
- Can be mounted with screws or magnet
- Snap on shutters are provided
- Dual colour coded IDC blocks provide the option of 568A or 568B wiring



Order No.	Description
SID-00009-02	Office Block 1 port, RJ45, RJSE, Shuttered, 568A/B - White
SID-00010-02	Office Block 2 port (with magnet), RJ45, RJSE, Shuttered, 568A/B - White
SID-00011-02	Office Block 4 port (with magnet), RJ45, RJSE, Shuttered, 568A/B - White
SID-00012-02	Office Block 6 port (with magnet), RJ45, RJSE, Shuttered, 568A/B - White
SID-00024-02	Office Block 2 port, RJ45, RJSE, Shuttered, 568A/B - White
SID-00025-02	Office Block 4 port, RJ45, RJSE, Shuttered, 568A/B - White
SID-00026-02	Office Block 6 port, RJ45, RJSE, Shuttered, 568A/B - White

T: +44 (0) 1489 572111

For more information, please refer to our PowerCat UTP Systems Solutions Brochure.

**The PowerCat FTP Product Range**

■ Molex Premise Networks Category 5e product range is known as the PowerCat system. Designed to meet or exceed the requirements of: TIA/EIA 568B.2, ISO/IEC 11801:2002, EN 50173:2002 standards.

■ The product range offers backwards compatibility with Category 5 systems, with enhanced performance.

**PowerCat FTP Cable**

Molex Premise Networks PowerCat FTP four pair cable with overall shield and drain-wire is available in PVC, LSZH IEC 332.1 and IEC 332.3 variants. Cables can be purchased in 305m boxes or 1km reels.

- 4 pair PVC or LSZH Cable
- Colour coded pairs for ease of termination
- 305m easy spool box and 1 km reel available

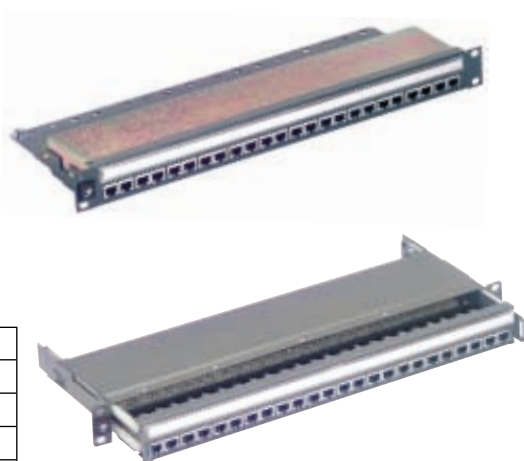


Order No.	Description
Contact Customer Services	4 Pair Cable, 305m Box, PVC, FTP, Cat 5e
Contact Customer Services	4 Pair Cable, 305m Box, IEC 332.3, LSZH FTP, Cat 5e
Contact Customer Services	4 Pair Cable, 1km Reel, PVC, FTP, Cat 5e
Contact Customer Services	4 Pair Cable, 1km Reel, LSZH, FTP, IEC 332.3, Cat 5e
Contact Customer Services	4 Pair Cable, 1km Reel, LSZH, FTP, IEC 332.1, Cat 5e
Contact Customer Services	4 Pair Cable, 305m Box, LSZH, FTP, IEC 332.1, Cat 5e

**PowerCat FTP & STP Patch Panels**

The 16 and 24 Port Sliding STP Patch Panels allow easy front loading access for ease of installation, termination and maintenance. A fixed 24 Port version of this panel is also available and full shielding is achieved on all versions by the provision of a braided foam RFI strip on the base and cover of the panel into which the foil or braid of the cable is pressed after termination.

- 16 & 24 Port 1U
- Sliding or Fixed STP version
- FTP 24 Port
- 568A/B wired
- Integral rear cable management
- Port identification
- 19" rack mounted
- Graphite Grey finish



The 24 Port FTP Patch Panel offers through shield continuity and is a versatile method of connecting horizontal cabling in a FTP environment.

Order No.	Description
PID-00019	24 Port Sliding Panel, 1U, RJ45, 568A/B STP, Cat 5e
PID-00026	16 Port Sliding Panel, 1U, RJ45, 568A/B, STP, Cat 5e
PID-00030	24 Port Fixed Panel, 1U, RJ45, 568A/B, FTP, Cat 5e
PID-00075	24 Port Fixed Panel, 1U, 568A/B, STP, Cat 5e

See Page 21 for our range of Cable Management Products

**PowerCat FTP Patch Cords**

Molex Premise Networks PowerCat FTP patch cords are manufactured using high quality shielded Category 5E stranded cable. Available in a range of colours and lengths, PowerCat FTP patch cords are pre-terminated with shielded RJ45 plugs and feature a strain relief boot and a plug latch protection cap.

- Shielded 4 Pair stranded cable
- Pre-terminated with WE8W Plugs
- Strain relief boots



Order No.	Description
PCD-00101-0*	FTP Patch Cord, 1m, RJ45, Cat 5e
PCD-00102-0*	FTP Patch Cord, 2m, RJ45, Cat 5e
PCD-00103-0*	FTP Patch Cord, 3m, RJ45, Cat 5e
PCD-00104-0*	FTP Patch Cord, 5m, RJ45, Cat 5e
PCD-00105-0*	FTP Patch Cord, 7m, RJ45, Cat 5e
PCD-00106-0*	FTP Patch Cord, 10m, RJ45, Cat 5e

\* Colour Options - C = Red, E = Grey, H = Blue, J = Green, K = Yellow

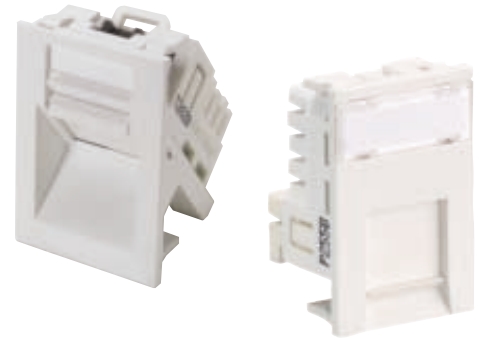


**PowerCat MOD-SNAP FTP Module**

The MOD-SNAP modular system provides a flexible and versatile method of installation, allowing the user the choice of installing as many data outlets as required. The modules are fully assembled units featuring the low profile Cat 5e RJLP connector and a 37.5 x 22mm fascia (BT6C size), shutter and spring assembly.

Molex Premise Networks unique patented RJLP RJ45 connector offers a low profile, space saving design that enables installation in shallow backboxes and trunking. The FTP connector provides continuity of the cable shield by providing a termination point for the drain wire.

- Enhanced performance RJ45 RJLP connector
- Space saving low profile design enables installation in shallow backboxes and trunking
- Spring loaded shutter
- Protected labelling facility
- Compatible with MOD-SNAP wallplates
- Ideal for floorbox applications
- 568B wired



Order No.	Description
MMS-00004-02	MOD-SNAP RJLP Module, RJ45, 568B, Cat 5e, FTP, White
MMS-00008-02	Angled MOD-SNAP RJLP Module RJ45, 568B Cat 5e, FTP, White

For wallplate options, please see wallplate section on Page 10

**PowerCat Euromod FTP Modules**

The Euromod modular system provides a flexible and versatile method of installation. This modular system offers a wide range of wallplates and modules that allow the user to install as many data outlets as required. The modules are fully assembled units featuring the low profile Cat 5e RJLP connector and a 25x50mm fascia, shutter and spring assembly.

Molex Premise Networks unique patented RJLP RJ45 connector offers a low profile, space saving design that enables installation in shallow backboxes and trunking. The FTP connector provides continuity of the cable shield by providing a termination point for the drain wire.

- Enhanced performance RJ45 RJLP connector
- Space saving low profile design enables installation in shallow backboxes and trunking
- Spring loaded shutter
- Compatible with Euromod wallplates
- 568B wired



Order No.	Description
MEU-00020-02	Euromod RJLP Module, RJ45, 568B, Cat 5e - White

For wallplate options, please see wallplate section on Page 10

**PowerCat Euromod 360° STP Module**

The RJ45 shuttered module is designed specifically for areas where there are high levels of Electro Magnetic Interference (EMI) and offers the user 360° shield protection. A two piece die cast shield is used for simple installation avoiding sharp edges which might damage cable.

These fully assembled modules utilise the unique patented RJLP RJ45 connector.

- Die cast shield for EMC protection
- RJ45 shuttered and with label facility



Order No.	Description
MEU-00003-02	PowerCat 360° Single Channel Euromod RJLP Module, RJ45, 568B, Cat 5e - White

E: [mpn\\_info@molex.com](mailto:mpn_info@molex.com)

For more information, please refer to our PowerCat FTP Systems Solutions Brochure.

### Fixed Wallplates

Fixed wallplates are ideal for space-limited areas such as power-poles and desk-top trunking, or areas where an unchanging number of ports are to be installed and modularity is not required.

- UK standard 86x86 mm fascia
- Enhanced performance RJ45 RJLP connector
- Spring loaded Shutters
- 1, 2 and 4 port options available
- UTP or FTP
- 568B wired

The wallplates are a complete assembly and include the unique patented RJLP RJ45 connector, offering a low profile, space saving design that enables installation in shallow backboxes and trunking.

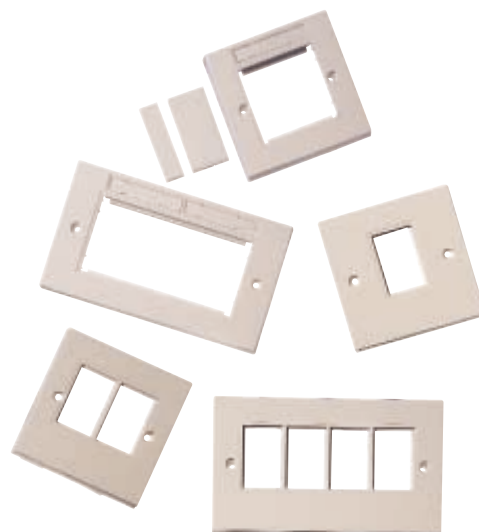


Order No.	Description
WNC-00007-02	1 Port PowerCat Fixed Shuttered UTP Wallplate 568B Cat 5e, White
WNC-00008-02	2 Port PowerCat Fixed Shuttered UTP Wallplate 568B Cat 5e, White
WNC-00010-02	1 Port PowerCat Fixed Shuttered FTP Wallplate 568B Cat 5e, White
WNC-00011-02	2 Port PowerCat Fixed Shuttered FTP Wallplate 568B Cat 5e, White
WNC-00009-02	4 Port PowerCat Shuttered UTP Wallplate 568B Cat 5e, White
WNC-00016-02	4 Port PowerCat Shuttered FTP Wallplate 568B Cat 5e, White

### Euromod and MOD-SNAP Wallplates

The Euromod and MOD-SNAP wallplate systems provide a flexible and versatile method of installation. Available in single and double gang versions the wallplates are designed to accept Euromod (25x50mm fascia) and MOD-SNAP (37.5 x 22mm fascia) modular ranges.

- Euromod - 50x50mm aperture
- MOD-SNAP - 37.5x22mm aperture
- Flexible system allowing the installation of as many modules as required



Order No.	Description
17-0101-02	Euromod Unlabelled Single Gang Wallplate - 86x86x10mm
17-0102-02	Euromod Unlabelled Double Gang Wallplate - 86x145x10mm
17-0111-02	Euromod Labelled Single Gang Wallplate - 86x86x10mm
17-0112-02	Euromod Labelled Double Gang Wallplate - 86x145x10mm
42-311-02	MOD-SNAP Single Gang, Single Aperture - 86x86mm
42-312-02	MOD-SNAP Single Gang, Double Aperture - 86x86mm
42-314-02	MOD-SNAP Double Gang, 4 Aperture - 86x146mm

NOTE : There are numerous Blank Modules, Bezels and Backboxes available - Contact Customer Services for more information.

### Testers

The SLT3S™ Tester is a rugged, lightweight product designed to verify the integrity of 1, 2, 3, and 4-pair UTP or STP channels. Incorporating a unique 3-in-1 design, this tester features built-in modular jacks for USOC, 568A and 568B wiring sequences.

- Innovative 3-in-1 design features modular jacks for testing USOC, 568A and 568B cabling systems
- Accurately verifies the continuity and sequence of 1, 2, 3, and 4 pair UTP and STP channels
- Continuously-sequencing LED display provides a diagnostic readout that immediately detects shorts, opens, reversals and mis-wires at a glance



Order No.	Description
33A-100-10	SLT3S Shielded Tester with 9 Volt battery (U.K.)
33-100-P	SLT3 Carry Case

**100 Base-T Category 5 Telco Panel - UTP**

Molex Premise Networks 100 Base-T Telco panel was designed specifically for installations that require connectivity with hubs that offer 50 pin connector front end presentation. The product consists of 24 RJ45 ports in the front and two 50 pin female connectors at the back.

A full range of Category 5, RJ21X 50 pin male Telco Cable Assemblies complete the product range.

- 100 Base-T Telco connection
- Full range of Telco Assemblies available



One 50 pin connector services 12 ports and is wired to the IEEE.802.3 Ethernet 100 Base-TX and 100 Base-T2 standard.

Order No.	Description
PMT-00003	24 Port 100 Base-T Category 5 Telco Panel

1m	3m	5m	10m	Description
FSA-00016	FSA-00017	FSA-00018	FSA-00019	Category 5 UTP Feeder Cable, 50w Male to Male-180"
FSA-00028	FSA-00029	FSA-00030	FSA-00031	Category 5 UTP Octopus Cable, 50w Male-180" to 12x RJ45

For more information on Cable Assemblies, please contact Customer Services

**ISDN Range**

The Molex Premise Networks ISDN range offers a versatile method of installing ISDN services in a structured cabling environment. Built-in resistors provide the correct termination of the ISDN Basic Rate S-Bus.

- Fitted with built-in resistors
- 24 Port Patch Panel
- Euromod, MOD-SNAP and fixed wallplate options available
- Blue shutter distinguishes ISDN
- No special application tooling requirements
- Fully compliant with ISO 8877



Order No.	Description
27.00.240.A001G	24 Port ISDN BUS Panel
17.10.017.A0012	Euromod ISDN Module, RJLP, Basic Rate, White
18.10.017.A0012	ISDN Basic Rate Wallplate, RJLP, White
18.10.027.A0012	ISDN Basic Rate and RJ45 Cat 5e Double Wallplate, RJLP, White
42.10.017.A0012	MOD-SNAP ISDN Module, RJLP, Basic Rate, White
42.A0020	RJ45 to RJ45 Socket, 150mm Line Adapter Unit ISDN Basic Rate



**50 Port Voice Panel**

The 50 Port 1U Voice Panel is a cost-effective product designed to utilise the minimum of rack/cabinet space to support 4, 25 or 50 pair cables in a voice backbone. Compliant with Category 3 standards, the 50 Port Voice Panel can support analogue or digital telephone services with the logical configuration of pairs 4/5 and 3/6, terminated on Molex Premise Networks KATT IDC connectors. 19" rack mountable, cable is managed on the integral rear cable management tray.

- 50 Port 1U
- Cat 3 compliant
- Termination of pairs 4/5 and 3/6
- Integral cable management

**New**



Order No.	Description
PID-00145	50 Port Voice Panel UTP RJ45, 1U

**Line Adapter Units**

The Molex Premise Networks Line Adapter Unit allows telecommunications equipment fitted with standard BT telephone plugs to be connected to RJ45 based structured cabling systems.

- Ideal for floorbox applications
- OFTEL GA5 approved
- Converts a direct line to RJ45 cabling system
- Flying lead for flexibility



Order No.	Description
42-111-1A	RJ45 to BT6L Socket, 150mm Cord (PSTN)
42-112-1A	RJ45 to BT6L Socket, 3m Cord (PSTN)
42-111-2A	RJ45 to BT6L Socket, 150mm Cord (PABX)
42-112-2A	RJ45 to BT6L Socket, 3m Cord (PABX)
42-114	RJ45 to BT6L Socket, 150mm Cord Secondary
42-130	RJ12 to BT6L PABX 150mm (Analogue - Secondary, Pins 4 & 5 digital)

**Consolidation Points**

■ A consolidation point (CP) is a piece of connecting hardware allowing interconnection between the permanently installed horizontal cables extending from the floor distributor (patch panel) and the moveable horizontal cables extending to the telecommunication outlets (TOs).

■ A CP should not be used as an active equipment or user interface. CP based architectures offer a number of advantages. They provide an easily replaceable work area cable, which lessens the on-going cost of replacement due to damage. They can also decrease work area cabling installation time.

■ They also include a portion of the cabling infrastructure which is permanent and re-useable, and which can be re-configured quickly with minimum of disruption. It is important to note that a CP is not a point of administration, so re-assignment of services must still take place at the patch panel.

**Consolidation Point Enclosures PowerCat 6 and PowerCat C5e**

Molex Premise Networks Consolidation Point Enclosures feature 6 or 8 shuttered modules, housed in a rugged graphite grey finished steel enclosure, which protect the incoming cable, but allows ready access to the Consolidation Point to Telecommunication Outlet Links. Designed for easy installation in ceiling voids or under floor, the product is TIA/EIA TSB75 compliant. Two enclosures may be interconnected, allowing for expansion.

- Allows moves, adds and changes without re-terminating and re-testing of cable
- 6 or 8 port shuttered RJLP modules C5e
- 6 or 8 port shuttered DataGate Plus module C6
- Rugged graphite grey enclosure
- TSB75 compliant
- Factory assembled and performance tested interconnection cords



Two Enclosures Interconnected

Order No.	Description
CPT-00024	6 Port, UTP, RJ45, 568B, PowerCat 6
CPT-00025	8 Port, UTP, RJ45, 568B, PowerCat 6
CPT-00022	6 Port, UTP, RJ45, 568B, PowerCat C5e
CPT-00023	8 Port, UTP, RJ45, 568B, PowerCat C5e
CPT-00026	6 Port, FTP, RJ45, 568B, PowerCat C5e
CPT-00027	8 Port, FTP, RJ45, 568B, PowerCat C5e

**Consolidation Point to Telecommunication Outlet Links**

Consolidation Point to Telecommunication Outlet (CP to TP) Links, provide the essential interconnection cords from the CP to the wall outlet. Factory assembled and tested, these links are manufactured using solid cable and are performance verified to ensure that when installed they provide compliant permanent links, which are covered by the Molex Premise Networks warranty.

■ *CP to TO Links are available in 5m lengths and above - Please contact Customer Services for more details.*



**Fibre Consolidation Point**

The Molex Premise Networks fibre consolidation point has been designed for workplaces that traditionally suffer from a high churn ratio. It allows the installed horizontal workplace cable to be terminated under floor or above ceiling in a protected enclosure, affording greater flexibility and usability. If more than 12 cores of fibre, or a mix of fibre and copper are to be terminated in one place, 2 consolidation points can be ganged together, back to back.

- All use shuttered adapters to protect against dust ingress
- Quarter turn fasteners used to secure lid
- Duplex SC, MT-RJ and LC adapter variants available
- Available in Single or Multimode variants
- Fibre jacket and strength member retention features fitted
- Fibre management features, splice holder and pigtails included in LC variant
- Labelling feature included on top cover
- Individual ports and numbered for ease of identification
- 12 fibre core capacity
- Cable entry point holes protected by grommets



Order No.	Description
CPT-00028	Consolidation Point, Fibre 6P 12F LC Shuttered, SM
CPT-00029	Consolidation Point, Fibre 6P 12F MT-RJ Shuttered, SM/MM
CPT-00030	Consolidation Point, Fibre 6P 12F DPX SC Shuttered, SM
CPT-00031	Consolidation Point, Fibre 6P 12F DPX LC Shuttered, MM



**Premise Distribution Systems**

■ Premise Distribution Systems are used to cross-connect and manage communications equipment wiring in the telecommunications cabinet and main distribution frames or as a consolidation point where limited space does not allow RJ45 patching.

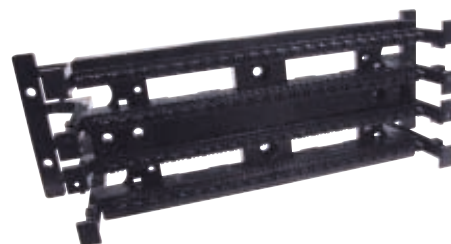
■ Molex Premise Networks offer flexible and reliable high-density Premise Distribution Systems, comprising of C6 and C5E termination blocks and connectors that meet the current international standards.

**Category 6 PDS**

The 96 Pair Termination Block Base is the key component of the C6 PDS system and has the same footprint as the Category 5e 100 Pair Termination Block Base. Category 6 performance is guaranteed by the unique pair separation (for the reduction of cross-talk) designed into the base. Manufactured from flame retardant thermoplastic, the termination block base features cut-outs for easy cable routing and is available with or without legs. Supplied with label cards and label holders and 24 4 Pair IDC connectors.

- Industry standard wall mount format
- Available with or without legs
- Available as a kit with IDC connectors

*New Product Range*



Order No.	Description
KPD-00078	96 Pair Base without Legs with 24 Cat 6 4 Pair IDC's
KPD-00079	96 Pair Base with Legs with 24 Cat 6 4 Pair IDC's
KPD-00089	96 Pair Base without Legs (no connectors)
KPD-00090	96 Pair Base with Legs (no connectors)

See Page 15 for Wall Mount Frame Options

**Category 6 19" Rack Mount PDS**

Combining all the advantages of a block-based system with frame mounted active equipment, the Category 6 19" Rack Mount PDS is available as a 3U 192 pair system with 1U cable management rings or as a 4U 192 pair system with 2U cable management rings.

- 19" rack mount
- 192 pair 3U
- 192 pair 4U



Order No.	Description
KPD-00080	Category 6 192 Pair Rack Mount Panel 3U with 48 4 Pair IDC
KPD-00081	Category 6 192 Pair Rack Mount Panel 4U with 48 4 Pair IDC

**Category 6 4 Pair IDC**

The 4 Pair IDC block is a high-performance connector capable of providing high-speed data transmission. The design utilises split-pair technology to provide Category 6 performance.

- High performance IDC
- Independently tested
- Gas tight termination
- ETL verified



Order No.	Description
KPD-00088	Category 6 4 Pair IDC Connectors

**Category 6 PDS Patch Cords**

Category 6 PDS Patch Cords are available as 4 Pair to 4 Pair assemblies or 4 Pair to RJ45 variants. The connector is polarised to prevent accidental reversal and integral strain relief holds the cable in place.

- 4 pair - 4 pair
- 4 pair - RJ45
- Pre-terminated
- ETL verified



1m	2m	3m	5m	Description
KPC-00161-OE	KPC-00162-OE	KPC-00163-OE	KPC-00165-OE	PDS Patch Cord, Cat 6, 4 Pair-4 Pair - Grey
KPC-00171-OE	KPC-00172-OE	KPC-00173-OE	KPC-00175-OE	PDS Patch Cord, Cat 6, 4 Pair-RJ45 - Grey

**Category 6 Multi-Pair IDC Termination Tool**

The Molex Premise Networks Multi-Pair Termination Tool is specifically designed to terminate the Category 6 4 Pair IDC connector to provide a gas-tight, reliable, termination.

- Multi pair termination
- 4 pair IDC



Order No.	Description
KPD-00086	Termination Tool Head
KPD-00087	Termination Tool Head and Handle

T: +44 (0) 1489 572111

**Category 5e KATT PDS**

■ The C5E KATT Premise Distribution System comprises of 100 or 300 pair Termination Blocks and is one of the most cost effective high-density patching systems on the market today, and features the patented KATT IDC connector.

**Termination Base Block**

The 100 Pair Termination Block Base is the key component in the KATT PDS. Manufactured from flame retardant thermoplastic, the termination block base features cut-outs for easy cable routing and is available with or without legs. Designation strips are available in multiple colours to ease identification.

- Industry standard wall mount frame
- Available with or without legs
- Easy cable routing

*New Product Range*

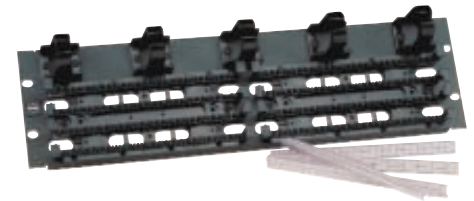


Order No.	Description
KPD-00026	100 Pair Termination Block Base (no legs)
KPD-00027	100 Pair Termination Block Base with legs
KPD-00028	300 Pair Termination Block
KPD-00053	1U Ring Run
<b>Designation Labels (100)</b>	
36.B0160	Purple
36.B0170	Grey
36.B0180	Blue
36.B0190	Brown

**Category 5e 19" Rack Mount PDS**

Combining all the advantages of a block-based system with frame mounted active equipment, the Category 5e 19" Rack Mount PDS is available as a 3U 300 pair system with 1U cable management rings or as a 4U 200 pair system with 2U cable management rings.

- 200 pairs 3U
- 200 pairs 4U
- Rugged steel 19" panel



Order No.	Description
36.B040G	Category 5e 200 Pair Rack Mount Panel 3U
36.B022G	Category 5e 200 Pair Rack Mount Panel 4U

**KATT IDC**

The C5E KATT connector is a high-performance IDC that requires less than half the insertion force of similar connectors. The unique termination has a "V" shaped contact that flex rather than fatigue when terminated. Available in 2, 4 and 5 pair options.

- High performance
- 2, 4 and 5 pair



Order No.	Description
36.A.0500	2 Pair KATT IDC Unmarked
36.A0510	2 Pair KATT IDC Marked, Brown/Green
36.A0520	2 Pair KATT IDC Marked, Green/Brown
36.A0530	2 Pair KATT IDC Marked, Blue/Orange
36.A0540	2 Pair KATT IDC Marked, Orange/Blue
36.A0550	4 Pair KATT IDC Unmarked
36.A0560	4 Pair KATT IDC , Brown/Green/Orange/Blue
36.A0570	4 Pair KATT IDC , Blue/Orange/Green/Brown
36.A0580	5 Pair KATT IDC , Grey/Brown/Green/Orange/Blue
36.A0680	5 Pair KATT IDC , Blue/Orange/Green/Brown/Grey

**KATT PDS Patch Cords**

KATT PDS C5E patch cords complete the system and are available in 1, 2 and 4 pair pre-terminated versions for easy pair administration. KATT PDS patch cords are polarised to prevent accidental reversal.

- C5E performance
- 1, 2 and 4 pair

1m	2m	3m	Description
KPC-00150	KPC-00151	KPC-00152	KPC 1 Pair RJ45
KPC-00154	KPC-00155	KPC-00156	KPC 2 Pair RJ45
KPC-00142	KPC-00143	KPC-00144	KPC 4 Pair-4 Pair C5E
KPC-00146	KPC-00147	KPC-00148	KPC 4 Pair RJ45 568B C5E
KPC-00138	KPC-00139	KPC-00140	KPC 2 Pair-2 Pair C3
KPC-00134	KPC-00135	KPC-00136	KPC 1 Pair-1 Pair

**New Product Range**



**PDS Wall Mount Frames**

These rugged steel frames mount easily to the wall, providing a complete communications facility with ample space behind for incoming cable.

- Rugged steel frame
- Easily installed
- Ring runs and cable management accessories available

Order No.	Description
36.C0054	300 Pair Unloaded Wall Mount Frame
36.C0064	900 Pair Unloaded Wall Mount Frame
36.C0074	Wall Mount Frame Vertical Drip Tray
36.C0084	Wall Mount Frame Drip Tray
36.C0094	Wall Mount Frame Shallow Ring Run
36.C0104	Wall Mount Frame Deep Ring Run
36.C0114	Wall Mount Frame Vertical Ring Run



**Molex Premise Networks Fibre Product Range**

■ Molex Premise Networks manufactures some of the most comprehensive fibre systems in the structured cabling market, incorporating a variety of connector technologies, such as; ST®, Duplex SC, MT-RJ®, LC, Escon®, FDDI and FC.

■ Molex Premise Networks offer total fibre solutions, ideal for either Backbone or To-The-Desk applications.

■ The Molex Premise Networks Fibre product range consists of; Management Panels, Enclosures, Adapter Plates, Connectors, Modules, Cable, Pre-Terminated Solutions, Adapters, Patch Cords, Splicing Equipment, Field Termination Connectors, Tool Kits and Testers.

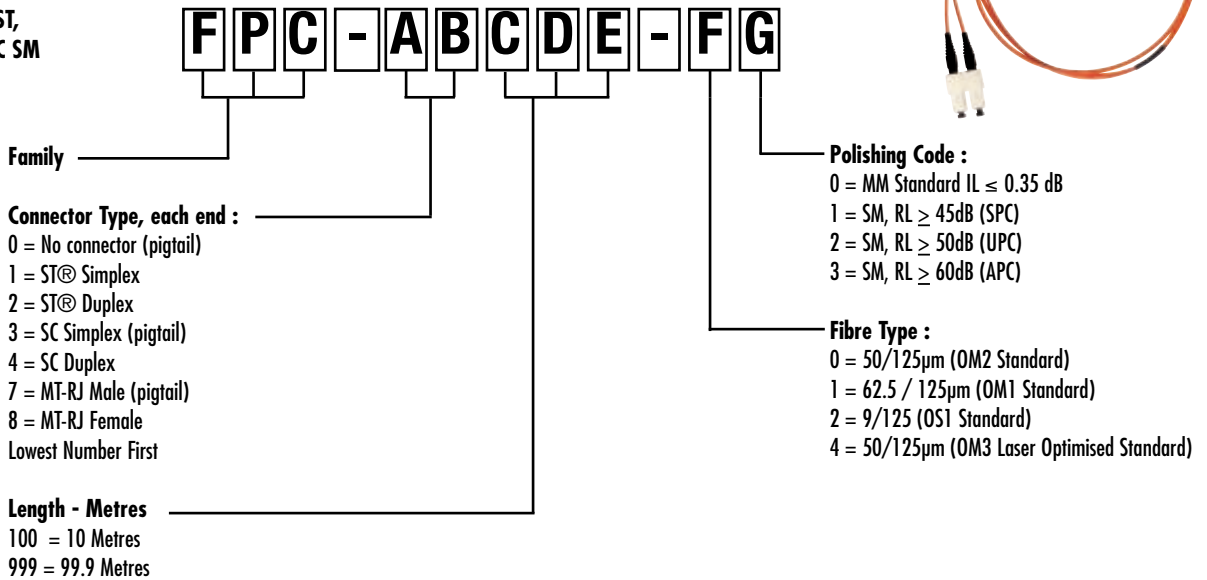
**Fibre Patch Cords**

We offer a comprehensive range of fibre optic cable assemblies for singlemode and multimode applications. Stocks are available in 1m, 2m, 3m, and 5m lengths, see matrices below for Part Number configuration.

- Ruggedised cable construction
- Kevlar strength member
- Insertion loss better than 0.35 dB
- All meet or exceed OM1, OM2 and OM3 Multimode and OS1 standards

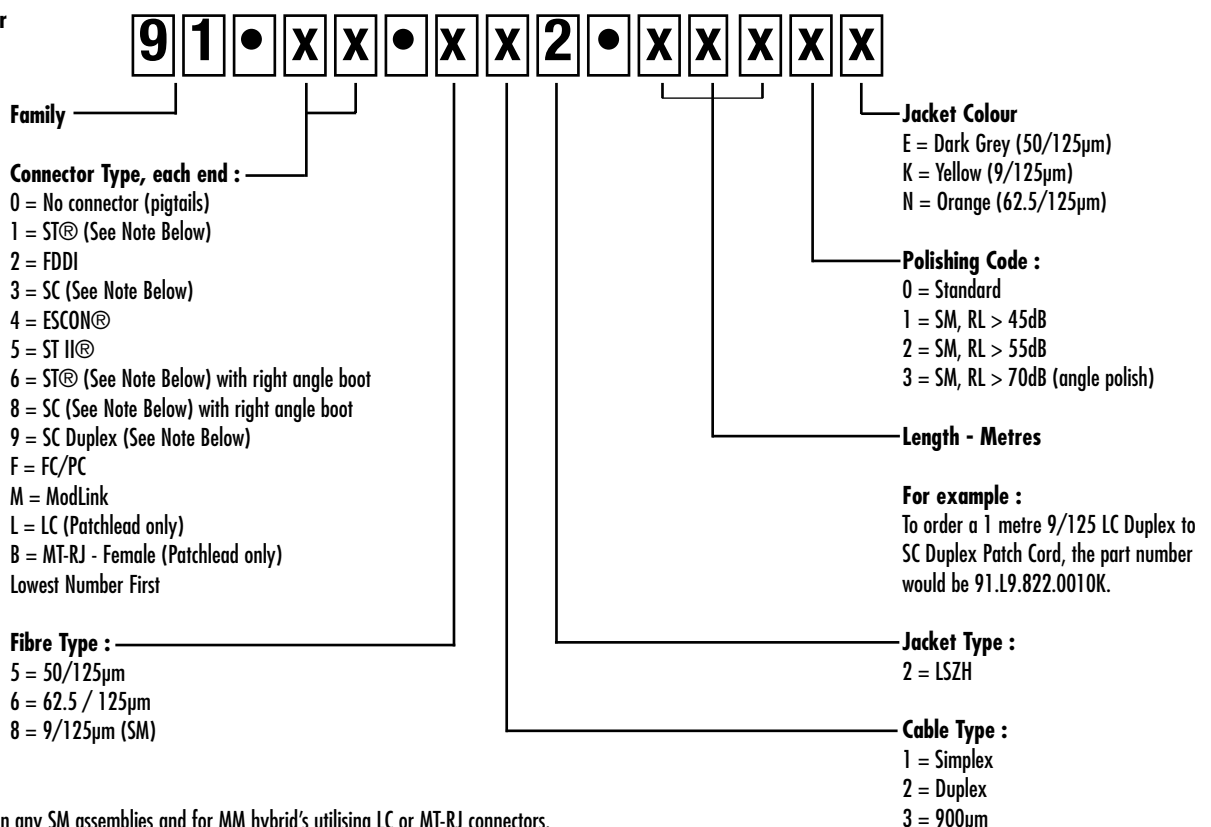


For MM SC, ST, MT-RJ and SC SM Assemblies



**For example :** To order a 1 metre Duplex LSZH 62.5/125 ST® to Duplex SC Patch Cord, the part number would be FPC-24010-10

For all other assemblies



NB. For use on any SM assemblies and for MM hybrid's utilising LC or MT-RJ connectors.



**Fibre Cable**

Molex Premise Networks Fibre Cable has been developed to comply with the latest emerging standards that classify the optical properties of the cable in more detail than previously.

- Internal or dry/free draining duct installation
- Rodent resistant "E glass" yarn strength member
- 900µm secondary coated fibre
- All meet or exceed OM1, OM2 and OM3 Multimode standards

No. of Cores	62.5/125 (OM1)	50/125 (OM2)	50/125 (OM3)	9/125 (OS1)
2	CFR-00441	CFR-00448	CFR-00455	CFR-00462
4	CFR-00442	CFR-00449	CFR-00456	CFR-00463
6	CFR-00443	CFR-00450	CFR-00457	CFR-00464
8	CFR-00444	CFR-00451	CFR-00458	CFR-00465
12	CFR-00445	CFR-00452	CFR-00459	CFR-00466
16	CFR-00446	CFR-00453	CFR-00460	CFR-00467
24	CFR-00447	CFR-00454	CFR-00461	CFR-00468



**601 Fibre Management Enclosure**

The 601 Fibre series wall mount system interface products are compact units for terminating optical fibre for terminating up to 24 fibres, dependent on adapter type. The 601 Fibre interface units are made of rugged white plastic and have a low profile, yet provide the proper internal fibre management to ensure the integrity of the optical network. Sufficient storage room for the fibre service loop makes installation easy. There is also provision for a user supplied seal for added security. The unit is compatible for splicing and direct terminations. The splice holders have been designed to accept up to 8 fusion splice protectors or mechanical splices.

- Compact unit. 184 x 127 x 38mm
- Up to 24 Ports
- Accepts ST®, Duplex SC, MTP, LC Duplex & MT-RJ
- Multimode & Singlemode configuration
- Accepts up to 8 fusion or mechanical splices
- Fibre management features
- Label holder
- ID card
- Cable tie feature
- Top, bottom and rear access
- Lockable
- Rugged white plastic



Singlemode	Multimode	Description
WFR-00011-02	WFR-00010-02	6 Ports, ST®
WFR-00026-02	WFR-00025-02	8 ports, ST®
WFR-00029-02	WFR-00028-02	8 ports, Duplex SC
WFR-00015-02	WFR-00015-02	24 ports, MTP
WFR-00031-02	WFR-00031-02	12 ports, MTRJ
WFR-00035-02	WFR-00034-02	12 ports, LC

**Fibre Management Panels 3 (FMP 3)**

The Fibre Management Panel 3 is a 1U 19" rack mounted Fibre Optic panel available in up to 24 ports in Duplex ST®, Duplex SC, MT-RJ and LC configuration. The FMP 3 is a universal panel, using a common chassis that is interchangeable with our range of front plates. The FMP 3 can be used as both a sliding panel, for easy front access and termination or as a fixed panel.

- Up to 24 ports (48 fibres)
- Fibre management system
- Strain relief for fibre cable
- Flexibility - Separate chassis and front plates

**New**



Order No.	Description
RFR-00100	Body Kit
RFR-00101	Front Plate 12 port (24 fibres) Duplex ST®/Duplex SC - Unloaded
RFR-00102	Front Plate 18 port (36 fibres) Duplex ST®/Duplex SC - Unloaded
RFR-00103	Front Plate 24 port (48 fibres) Duplex ST®/Duplex SC - Unloaded
RFR-00111	Front Plate 12 port Duplex ST® - Fully Loaded, SM
RFR-00115	Front Plate 12 port Duplex ST® - Fully Loaded, MM
RFR-00119	Front Plate 12 port Duplex SC - Fully Loaded, SM
RFR-00123	Front Plate 12 port Duplex SC - Fully Loaded, MM
RFR-00127	Front Plate 12 port Duplex SC Shuttered - Fully Loaded, SM
RFR-00131	Front Plate 12 port Duplex SC Shuttered - Fully Loaded, MM
RFR-00107	Front Plate 24 port (48 fibres) MT-RJ - Unloaded
RFR-00135	Front Plate 24 port MT-RJ - Fully Loaded, MM
RFR-00137	Front Plate 24 port MT-RJ Shuttered - Fully Loaded, MM
RFR-00141	Front plate 24 port LC Shuttered - Fully Loaded, SM
RFR-00170	Panel, 24 port LC Shuttered - Fully Loaded (inc. Pigtailed), SM

**Fibre Adapters**

Molex Premise Networks offer a comprehensive range of adapters, both multimode and singlemode. These adapters can be used in fibre management panels, wall enclosures and wall outlets

- ST®, SC, MT-RJ, Escon & FDDI variants available
  - Flange, Snap and Screw mount
- For complete list of available adapters contact Customer Services*



Order No.	Description
91.A0160	ST® Adapter, MM, Metal body
91.A0150	ST® Adapter, MM, Polymeric body
91.A1190	Shuttered Duplex SC/Duplex SC, MM, Flange mount
91.A1300	Shuttered Duplex SC/Duplex SC, MM, Snap mount
AFR-00203	Duplex SC/Duplex SC, MM, Flange mount
91.A0500	Duplex SC/Duplex SC, MM, Snap mount
AFR-00126	MT-RJ/MT-RJ, MM & SM, Flange mount

**Fibre Connectors**

Molex Premise Networks offer a comprehensive range of connectors for LAN applications. The connectors are available for singlemode or multimode applications.

- Manufactured with a ceramic ferrule to ensure quality and performance
  - ST®, SC, MT-RJ, Escon & FDDI variants available
- For complete list of available connectors contact Customer Services*



Order No.	Description
91.A0084	ST®, MM, Polymeric nut
91.A0094	ST®, MM, Metal nut
91.A0104	ST®, MM, Metal nut - 90° boot
91.A0114	ST®, MM, Metal nut - 900µm boot
91.A0290	SC, MM, Ceramic ferrule, 90° boot
91.A0310	SC, MM, Ceramic ferrule, 900µm boot

**Fibre Connectors - Xpress™ SC and ST® Connectors**

The Molex Premise Networks Xpress Connectors provide quick, cost effective and reliable field terminations for optical fibre LAN's. These connectors do not require power or special tooling and can be terminated on site with the use of adhesive.

- Typical insertion loss: 0.32dB
- Minimal tooling required
- Typical termination time: 2 minutes



Order No.	Description
91.A1230	Xpress Kit ST®, MM
AFR-00011	Xpress Kit Simplex SC, MM

**Fibre Connectors - Xpress-Lock™**

The Xpress-Lock™ MT-RJ field terminable small form factor connector provides quick, cost effective and reliable terminations for optical fibre LAN's. This connector does not require power or special tooling and can be terminated on site. Typical termination time is less than two minutes.

- Typical insertion loss: 0.5dB
- Requires no special tools, adhesives or polishing
- Typical termination time: 2 minutes
- Utilise with shuttered adapter for eye protection and to prevent dust ingress
- Colour-coded boots distinguish fibre size
- Re-usable (up to 10 times)



Order No.	Description
86117-2200	DataGate Outlet Jack, 62.5/125µm (OM1) MM, Male, White Collar/Black Adapter
86117-3200	DataGate Outlet Jack, 50/125µm (OM2) MM, Male, White Collar/Black Adapter
86117-4200	DataGate Outlet Jack, 50/125µm (OM3) MM, Male, White Collar/Black Adapter
86016-0006	Connector Kit, 62.5/125µm (OM1) MM, Male (6 pack)
86016-1006	Connector Kit, 50/125µm (OM2) MM, Male (6 pack)
86016-2006	Connector Kit, 50/125µm (OM3) MM, Male (6 pack)

ST® and LC, and MTRJ® are registered trademark of Lucent Technologies and AMP Technologies respectively.

**Angled Euromod Modules**

Euromod is a modular range of outlets, plates and connectors designed for use in different countries. In addition to the existing range of Euromod modules for use with copper media, Molex Premise Networks also provides a range of solutions for Fibre Optic applications.

In combination with the existing Euromod product range and Fibre Management Back Box, these angled modules will provide a unique fibre to the desk solution.

- Angled 50x50mm module
- Available with ST®, Shuttered Duplex SC/ST®, Shuttered Duplex SC, FDDI/ST®, ESCON/ST, MT-RJ & Shuttered MT-RJ Adapters
- Multimode & Singlemode configuration
- Compatible with 32mm deep trunking
- Permits a 30mm bend radius

*Other variants available. For more information contact Customer Services*



Order No.	Description
MEU-00005-02	Euromod Angled ST/ST®, MM, 50x50mm, 4 Adapters
MEU-00009-02	Euromod Angled Shuttered Duplex SC/SC, MM, 50x50mm, 2 Adapters
MEU-00043-02	Euromod Angled MT-RJ/MT-RJ, MM, 50x50mm, 2 Adapters
MEU-00044-02	Euromod Angled Shuttered MT-RJ/MT-RJ, MM, 50x50mm, 2 Adapters
MEU-00048-02	Euromod Angled Shuttered LC/LC, SM, 50x50mm, 2 Adapters

**Enclosure Application Euromod Modules**

Euromod is a modular range of outlets, plates & connectors designed for use in different countries. In addition to the existing range of Euromod modules for use with copper media, Molex Premise Networks also provides a range of solutions for fibre optic applications. These modules are designed for use within the WM-12 fibre enclosure.

- 25x50mm & 50x50mm modules
- Euromod compatible
- Available with ST®, Duplex SC, Shuttered Duplex SC and MT-RJ adapters
- Multimode & Singlemode configuration

*Other variants available. For more information contact Customer Services*



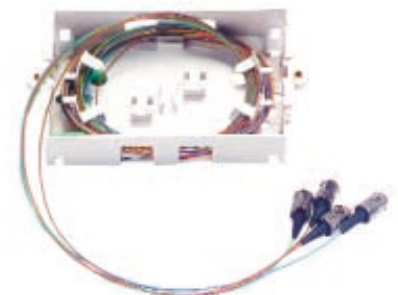
Order No.	Description
17-0423-02	Euromod ST®, MM, 25x50mm, 2 Adapters
17.A0162	Euromod Duplex SC/SC, 25x50mm, 1 Adapter
17.A0202	Euromod Duplex Shuttered SC/SC, 25x50mm, 1 Adapter
MEU-00032-02	Euromod MT-RJ/MT-RJ, 25x50mm, 2 Adapters
MEU-00029-02	Euromod LC/LC, 25x50mm, 2 Adapters
17.A0312	Euromod ST/ST®, MM, 50x50mm, 6 Adapters
17.A0252	Euromod Duplex SC/SC, 50x50mm, 3 Adapters
MEU-00033-02	Euromod MT-RJ, 50x50mm, 4 Adapters
MEU-00031-02	Euromod LC/LC, 50x50mm, 4 Adapters

**Fibre Management Back Box**

The Fibre Management Back Box provides enough space for direct termination or splicing of up to eight fibres and is designed to maintain the minimum bend radius requirements for fibre optic cable when used in conjunction with Euromod Angled Modules.

This product is also suitable for applications which require copper modules, and can accommodate up to 2 flat Euromod PowerCat or secondary voice modules as well as 4 fibres. It is packaged complete with threaded inserts for trunking applications and adhesive strip for mounting in a surface mount backbox.

- Fits inside 32mm UK standard double gang backbox for surface mount applications
- Up to 8 fusion splices can be accommodated securely
- Provides storage for up to 8m of 900µm tight buffered fibre
- Correct bend radius maintained when used with angled modules
- No additional backbox required for trunking applications
- Mixed media capability



Order No.	Description
WFR-00044-02	Fibre Management Back Box

Lightband™ System Solutions Brochure available

**compactLAN Product Range**

■ compactLAN introduces small to medium sized business to the benefits of communications networking, utilising a cost effective structured cabling system with minimum space requirement.

■ Suitable for a variety of business environments, compactLAN is ideal for; Small/Home Businesses, Company Branch Offices, General Practitioner/Dental Surgeries, Veterinary Practices, Schools and Professional Services/Consultants firms.

■ Molex Premise Networks' compactLAN offers a complete solution for small office working, allowing the user to organise a communications network by combining functionality with aesthetics.

**Cabinet**

The compactLAN cabinet is a stylish, compact and discrete wall mount enclosure that provides 8U of cabinet space, accommodating panels 260mm wide. The cabinet is a two piece construction containing mounting rails that accept quick fit snap-in fasteners for easy panel fitting (no nuts/screws required). The cabinet sides are easily accessed making installation and cable dressing simple. Cable entry and tie off points are provided. Ventilation slots on the side of the enclosure prevent overheating. The smoked perspex door is lockable and reversible allowing the product to be conveniently positioned in any location.

- Space saving 8U, 272mm wide cabinet
- Easy wall mounting
- Space for active equipment
- Rugged steel enclosure with lightweight perspex door
- Lockable and reversible door
- Side access for easy installation
- Stylish dark blue finish
- Dimensions : 360mm(H) x 272mm(W) x 240mm(D)



Cabinet Shown Fully-Loaded

Order No.	Description
RAA-00113	Cabinet

**Data Panels**

The compactLAN Category 5e 8 Port Data Patch Panel is designed for high speed voice and data transmission. Utilising the Molex Premise Networks unique patented RJLP RJ45 module, compactLAN data panels provide consistent and reliable performance. Rear cables are easily dressed and once terminated are supported by the integral cable management tray.

- Shuttered RJ45 RJLP Connector CSE providing protection from dust
- EIA 568B wired
- Protected labelling facility
- Integral rear cable management
- Snap-in mounting fixtures, no nuts/screws required
- Stylish dark blue finish
- Dimensions : 43.6mm(H) x 260mm(W) x 79mm(D)



Order No.	Description
PID-00099	Cat 5e Data Panel, 8 port, 1U, UTP
RFR-00088	Fibre Panel 8 Port ST Multi-Mode 1U

**Host Panel (Voice & ISDN)**

Supporting 1 Analogue Line & ISDN Line, the Host Panel allows for;

- Four extensions from the Analogue Line.
- Four terminal adapters to be supported by the ISDN Line. (Supports ISDN 2E & Business/Home Highway)

If additional ISDN ports are required a dedicated ISDN panel is available that supports up to 8 users.

- Snap-in mounting fixtures, no nuts/screws required
- Two panel versions - dedicated 8 Port ISDN and 4 Port Voice/4 Port ISDN
- Stylish dark blue finish
- Dimensions : 43.6mm(H) x 260mm(W) x 35mm(D)

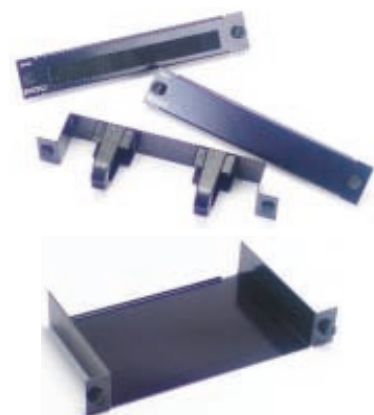


Order No.	Description
PID-00098	ISDN Panel, 8 Port, 1U
PID-00100	Host Panel, 4 Port Voice, 4 Port ISDN, 1U

**Cable Management & Hub Shelf**

The Brush Tidy Panel allows the user to administer the rear ports of a hub/switch and patch to the front of the Patch Panel as the brush hides the cables, whilst allowing the plugs to be fed through. The Ring Run Panels offer a rugged, but flexible patch cable harness system for neat cable dressing. Blank Panels are ideal to disguise empty cabinet space. The Hub Shelf accommodates 1U of cabinet space (hub or switch not supplied).

- Stylish dark blue finish
- Cable Tidy Panel with Brush - Dimensions : 43.6mm(H) x 260mm(W) x 35mm(D)
- Cable Management Ring Run Panel - Dimensions : 43.6mm(H) x 260mm(W) x 65mm(D)
- Blank Panel - Dimensions : 43.6mm(H) x 260mm(W) x 35mm(D)
- Hub Shelf - Dimensions: 43.6mm(H) x 260mm(W) x 137mm(D).



Order No.	Description
CMA-00020	Brush Tidy Panel, 1U
CMA-00019	Ring Run Panel 1U
RAA-00115	Blank Panel, 1U
RAA-00114	Hub Shelf, 1U

For more information see [www.molexpn.co.uk/compactlan](http://www.molexpn.co.uk/compactlan)



**Molex Premise Networks Cable Management**

■ Cable Management is an important part of any installation. Combining aesthetics with functionality, the Molex Premise Networks range of rack mountable cable management products offer cable management with minimal effort.

■ Molex Premise Networks offer an extensive range of cabinet solutions from wall and floor mounted cabinets to the innovative Universal Patching Frame.

■ The basic design principle of the Universal Patching Frame (UPF) is to provide a simple cable loom support with maximum accessibility, together with a universal patch panel mounting facility.

**Cable Management**

Ring Run Panels come complete with flexible plastic rings which are designed to aid installation by providing a speedy method of cable dressing. Blank Panels provide the in-fill for tidy looking cabinet installation. Cable tidy brush panels offer the user the ability to hide unsightly cables behind the brush, but with the convenience of access to these cables if necessary.

- 19" Rack Mountable 1U and 2U
- Styling complements Molex Patch Panel Range
- Graphite (standard) and RAL 7032 (beige) colour finishes available



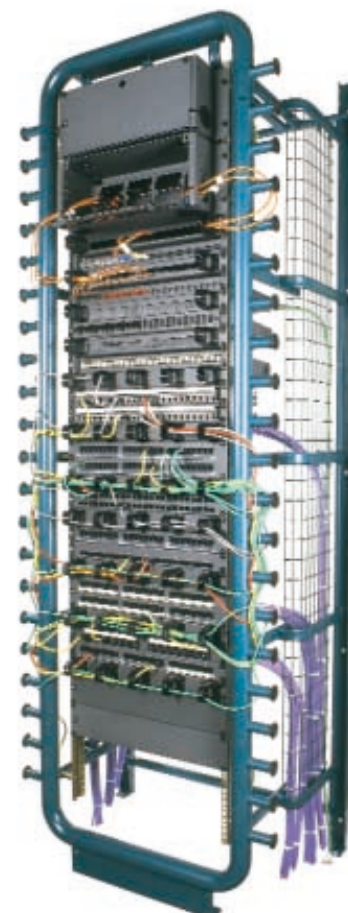
Order No.	Description
25.B013G	2U Ring Run Panel (5 Rings)
25.B016G	1U Ring Run Panel (5 Rings)
25.A018G	1U Blank Panel
25.A019G	2U Blank Panel
25.A029G	1U Cable Tidy Brush Panel
25.B035G	1U Deep Ring Run Panel (5 Rings)
25.B058G	2U Deep Ring Run Panel (3 Rings)

**Universal Patching Frame™ (UPF)**

The Universal Patching Frame is 42U high and available in a 42 arm version. The tubular construction also ensures that the minimum bend radius, as specified by ISO/IEC 11801 and ANSI/TIA/EIA-568-B, is not exceeded preventing cable from being damaged or performance impaired.

- Cable-friendly tubular construction ensures system integrity
- Open frame maximises access for fast and simple installation
- Horizontal arms enhance cable management
- 19 inch standard allows active equipment and cabling to be accommodated in the same cabinet
- Minimal footprint saves space
- Lockable doors option for added security
- Baying kit allows frames to be linked together in large installations
- Clean earth bus bar for shielded applications
- Range of accessories (see specification below)
- Suitable for copper and fibre applications
- Slip joint construction allows the frame to be delivered in flat-pack and quickly assembled

Conventional cable trays have been replaced with an open 50mm x 25mm steel wire mesh, to give finger through access to assist in tracing patch cord paths and tying off. Equipment mounting angles are secured by bolts which allow for installation of 19" or 530mm patch panels. Fixings are provided for optional, rear mounting verticals. The frame can be totally enclosed with the addition of side covers and front and rear doors.



Order No.	Description
UPF-00021	42u Open frame assy - 42 arm (Product packaged in 2 cartons)
UPF-00002	Front sill assy kit (1)
UPF-00003	Glass door assy (2 halfwidth doors)
UPF-00004	Side cover - left
UPF-00005	Side cover - right
UPF-00006	Rear door assy kit
UPF-00007	Top cover ventilated
UPF-00008	Fan tray - c/w 2 fans
UPF-00009	Fan tray - c/w 4 fans
UPF-00010	Equipment mounting angles (2)
UPF-00011	Baying kit
UPF-00012	Bus bar assy
UPF-00013	Service shelf (3)
UPF-00014	Modem shelf
UPF-00022	Power dist unit - 10 way vert (UK)
UPF-00016	Power dist unit - 6 way hor (UK)
UPF-00018	Fixed shelf - 400mm deep
UPF-00019	Fixed shelf - 600mm deep

# Molex Premise Networks - A Global Company

Network speeds are getting faster every day. To keep pace, you need to future-proof your network. As your single source for high-performance copper and fibre structured cabling products, Molex Premise Networks make it easy - manufacturing the products you need for virtually any application requirement.

Molex Premise Networks manufactures a wide portfolio of products catering for the transmission of voice, data and video imaging signals. In supplying innovative structured cabling solutions worldwide, Molex Premise Networks' reputation is one of technological excellence.

Manufacturing a comprehensive product range, supporting UTP, FTP, STP and Fibre Optic media, Molex Premise Networks provides; cable, patch panels, outlets, connectors, patchcords and cable management – a complete cabling network system.



## We Partner with You for the Life of your System

Molex Premise Networks is committed to delivering innovative voice and data communications solutions that safeguard the integrity of your data. To do this, we align ourselves with cabling and installation partners who offer the highest quality products and services. Then we provide intensive training that ensures they understand how our structured cabling products can best serve your company. Regardless of the Molex Premise Networks products you choose, expect flawless performance.



## We Warrant the Integrity of your System

It is Molex Premise Networks' mission to provide copper and fibre solutions that ensure the integrity of your data. This commitment is evident in every aspect of our business – from product design, testing, and ease of installation to customer and technical support. It is also reflected in the 25 Year Product, System Performance and Application Assurance Warranty you receive when installing a Molex Premise Networks structured cabling system.

This comprehensive warranty ensures that your network will operate flawlessly and support any application designed to the TIA/EIA 568B, ISO/IEC 11801:2002, AS/NZS 3080:2000 standards – now and for many years to come.



Specifying a structured cabling system that will meet the long-term communications needs of your company is a challenging task. It is vital to install a system that provides optimum performance with adequate headroom to accommodate future technology.

The system needs to be flexible – providing unfailing end-to-end performance regardless of the number of moves, adds, and changes made. To assure long-term system performance, you need a warranty that will stand behind your structured cabling system – because without data integrity, nothing else matters.

## Global Design, Manufacturing and Quality

Molex is a \$1.8 billion enterprise with 68 sales offices, 26 product development centres and 54 manufacturing facilities across 19 countries. More than 95 percent of these manufacturing facilities have received ISO quality certification with over 75 percent QS 9000 certified.

As part of our continuing commitment to new, customer driven products, Molex reinvests millions of dollars each year in expanded facilities, state-of-the-art equipment, new tooling and design processes. In fact, over the past five years that spending has topped \$1.1 billion. And after more than 60 years of being in business, that kind of reinvestment has resulted in thousands of new products that have met the specific needs of customers around the world.

As part of the second largest interconnection product manufacturer in the world, Molex Premise Networks has established strategic partnerships that enable us to successfully deliver our systems to certified installers and distributors in over 100 other countries worldwide. So when you choose Molex Premise Networks, you choose a partner who can design, install and service your networks virtually anywhere in the world.

## Designed by Experts, Installed by Certified Professionals

Even the best cabling system, designed by the best engineers, can fail if improperly installed. That's why we make certain that every Molex Premise Networks network cabling solution is installed by a certified professional. We've trained thousands of communications experts who regularly install Molex Premise Networks systems in the field. These professionals must complete comprehensive training and pass rigorous tests to become a certified Molex Premise Networks installation partner. But we don't stop with certification. Our certified installers are required to continually keep up-to-date on the latest Molex Premise Networks products and systems by undergoing compliance training on an annual basis.

The information in this document is subject to change without notice. Molex Premise Networks assumes no responsibility for any errors that may appear in this document



Seal of Quality Installations





*Bringing People & Technology Together, Worldwide<sup>SM</sup>*

**EMEA Headquarters**

Hampshire, England  
Tel: 44 (0)1489 572 111  
Fax: 44 (0)1489 559 106

**Africa**

Woodmead, South Africa  
Tel: 27 11 233 1234  
Fax: 27 11 233 1231

**Corporate Headquarters**

Hudson, NH 03051 U.S.A.  
Tel: 603 324 0200  
Fax: 603 577 8770

Visit our Web site at <http://www.molexpn.co.uk>