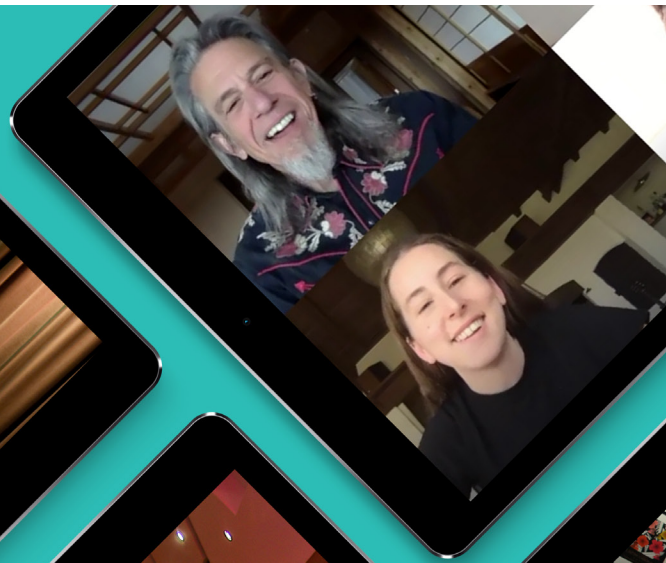
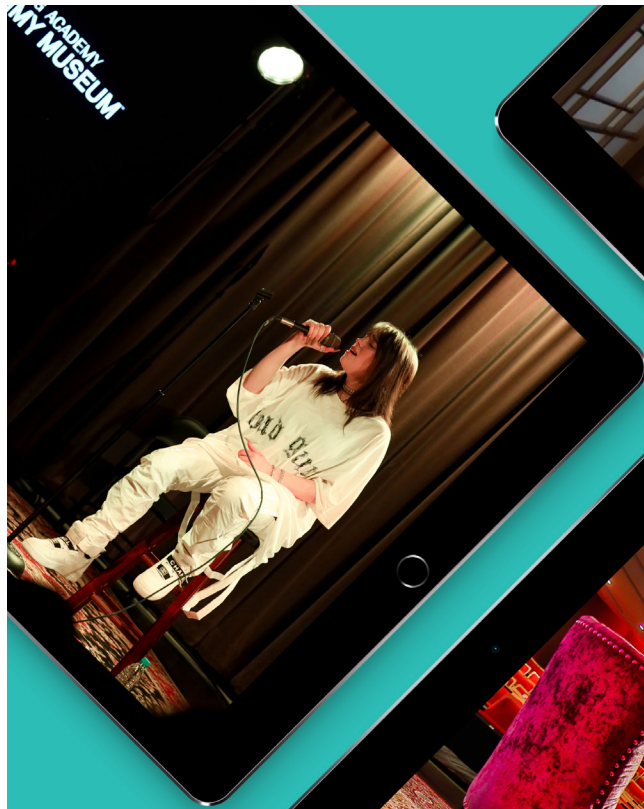


Recording Academy  
GRAMMY MUSEUM

RECORDING ACADEMY  
GRAMMY MUSEUM



ANNUAL REPORT  
2020

# WELCOME FRIENDS

---



**MICHAEL S. STICKA**

President, GRAMMY Museum

---

Dear Friends -

Shortly after celebrating our 10th anniversary, we decided it was time to look inward to determine where we were as an organization and strategize about where we wanted to be. The result was a comprehensive strategic plan that examined all areas of the GRAMMY Museum, including growing our world-class nationwide music education programs; strengthening our impact within local communities; emphasizing our national footprint to deliver inspiration through music; creating state-of-the-art curatorial and interactive experiences; and providing enhanced opportunities for our members and guests to experience intimate programming in a way that only we can provide.

Despite the unplanned and certainly unexpected challenges we faced this year, I am thrilled with how much we accomplished in advancing the Museum and reaching our goals. Within this report, we have highlighted many of these achievements that came about from rigorous planning with a dedicated team of professionals.

This was a year marked by both physical and programmatic growth in the midst of unprecedented challenges that required innovative thinking to continue inspiring students and music lovers through our mission. Shortly after closing our doors in March 2020, I shared with the Museum's team our mantra moving forward: that while our doors may be closed, our mission is not. This sentiment is woven throughout our programs and, is apparent in everything we've done. While 2020 may forever be synonymous with the COVID-19 pandemic, we have chosen to reflect on the good, pioneering moments we had, rather than letting our difficulties dictate our narrative.

I'm immensely proud to share the story of our past year with you. Everything you read in this report is a direct result of your generosity, so thank you for continuing to support us with your time, talent, and treasure. I look forward to updating you next year, as we continue to celebrate music, inspire students, and bring together the art of music with music's most passionate fans - you!

My deepest gratitude,

Michael Sticka

# THANK YOU

---



**TIM BUCHER**

Chair, GRAMMY Museum Board of Directors

---

What a wild, remarkable year. Despite the continued challenges the GRAMMY Museum has faced with the on-going COVID-19 closure, I look back on the year with pride and admiration. Because, despite these challenges, the year was marked with significant and impressive technological advances and important milestones. And that is how this year will ultimately be remembered.

I have long been an advocate for the music education and community-focused work of the GRAMMY Museum and, in July 2020, it was my great honor to be elected Chair of the Board of Directors. Being able to see, first-hand, the creativity and dedication of the Museum's staff as they achieved such great milestones as renovating two-thirds of the Museum, expanded its music education programs, and met the COVID challenge head-on by creating GRAMMY Museum at Home, is inspiring.

The development of Mono To Immersive, a new immersive experience, and the interactive Grammy Highlights Through the Years timeline, both located on the 3rd floor, are exciting and mark the start of what will be many technological and digital updates for the Museum - both within our walls and virtually.

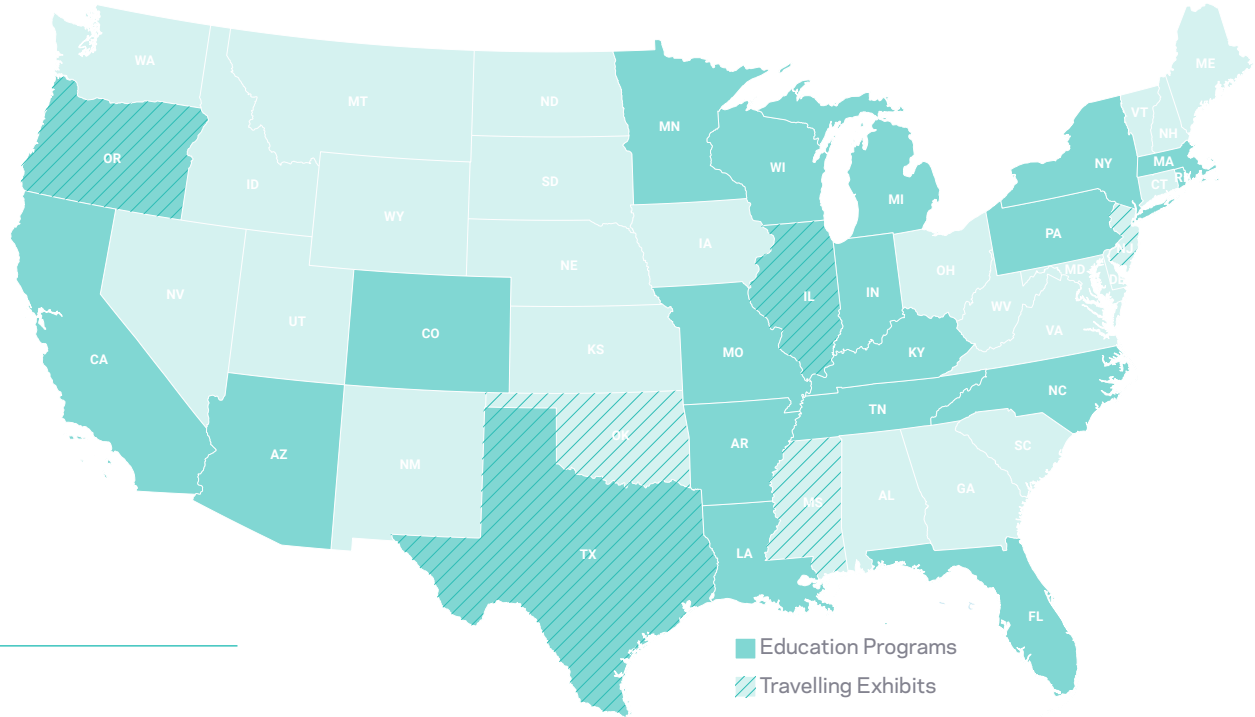
This was truly a year of inspiration and innovation, and from where I see it just the beginning of the Museum's continued leadership in expanding access to music education and creating a digital museum for the 21st century.

I'm excited for what's coming next and I'm grateful for your continued support of our Mission.

Cheers to moving forward,

Tim Bucher

# MUSEUM IMPACT NATION WIDE



**20** States engaged through our educational programs including GRAMMY Museum Signature Schools, GRAMMY Career Day, GRAMMY Camp Weekend, Career Pathways Program, and the Music Educator Award

**6** States visited by 7 of our traveling exhibits

**743,163** Views of GRAMMY Museum At Home since closure, including Public Program videos and educational content

**40+** Public Programs recorded remotely via digital conferencing

**2** Cities spotlighted during our newest program, City Sounds, which featured musicians from Historic Filipinotown and Long Beach

**24,781** Students reached through our in-Museum education programs, including school tours and education workshops and more

**65** Education Mini-Lessons produced and published online through the GRAMMY in the Schools Knowledge Bank

**30** Performances by 62nd GRAMMY Award nominees, at the GRAMMY Museum

**5,000** square feet of gallery space devoted to Latin music

**12** exhibits opened or updated in the GRAMMY Museum

**\$101,500** in grants to 16 high school music programs nationally

**3,360** Music Educator Award nominees. Mickey Smith, from Maplewood Middle School in Sulphur, LA, was selected as the 2020 Music Educator Award winner

**19,000** Music Lovers attended 64 Public Programs produced in the Clive Davis Theater

**42,911** visitors toured the Museum through March 12, 2020



# THE LATIN MUSIC GALLERY

## THE BEGINNING OF A NEW CHAPTER

Perhaps the biggest undertaking this year was the complete renovation of the GRAMMY Museum's third floor to upgrade existing permanent exhibits and create Los Angeles' first permanent Latin Music Gallery.

Working in partnership with the Latin Recording Academy, we opened the new Latin Music Gallery on November 18, 2019 with a ribbon cutting ceremony and celebration that brought together some of Latin music's biggest stars, industry



professionals, local dignitaries, community members, and Museum supporters. The Museum also received an official proclamation from L.A. City Council President Herb Wesson, announcing that it was hereby Latin GRAMMY Day, and a proclamation from LA County Supervisor Hilda Solis.

The Latin Music Gallery's inaugural exhibit was Latin GRAMMY: 20 Years of Excellence, which celebrated the 20th anniversary of the Latin GRAMMY Awards through original artwork, personal items from artists, and instruments from over 30 artists.

During the event, Latin Recording Academy President/CEO, Gabriel Abaroa Jr., said "Latin music is a worldwide influence and we are honored to partner with the GRAMMY Museum to showcase the talented musicians, monumental Latin music moments, and significant milestones that have contributed to its popularity."

As part of the extensive renovation, four permanent exhibits (Mono to Immersive presented by Harman, GRAMMY Highlights Through the Years, Great GRAMMY Moments and On the Red Carpet presented by Delta) were also re-designed and upgraded with state-of-the-art technology.

# GRAMMY MUSEUM AT HOME

DOORS CLOSED. MISSION OPEN.

Community has, and always will be, at the heart of the GRAMMY Museum. So when we closed our doors on Friday, March 13, 2020 due to the COVID-19 pandemic, Museum staff rallied together to evaluate what serving our mission might look like in a new world of social distancing. The result was GRAMMY Museum At Home (GMAH), a digital museum that was unveiled just 5 days after our closure, making us one of the first museum's anywhere to create such a robust virtual presence.

Daily GMAH content spotlighted each pillar of our mission: Education, Public Programs, Preservation & Heritage, and Community. It included virtual exhibits, mini-education lessons and curriculum from the GRAMMY In The Schools Knowledge Bank, and more than 30 archived Public Programs interviews. In an effort to further engage Museum members and supporters, we also curated a number of new programs, such as Album Club, Consider This: A Weekly Discussion On Music, Spotlight Saturdays, and Programs at Home, which featured new, virtually-recorded interviews and performances with a diverse group of artists.

We made a concerted effort to involve every staff member in the development and production of content, including daily playlists that were compiled by employees. In all of these efforts, we quickly found ourselves the leader among our peers in our shift to a new reality.



# MUSIC EDUCATION SHIFTS TO VIRTUAL

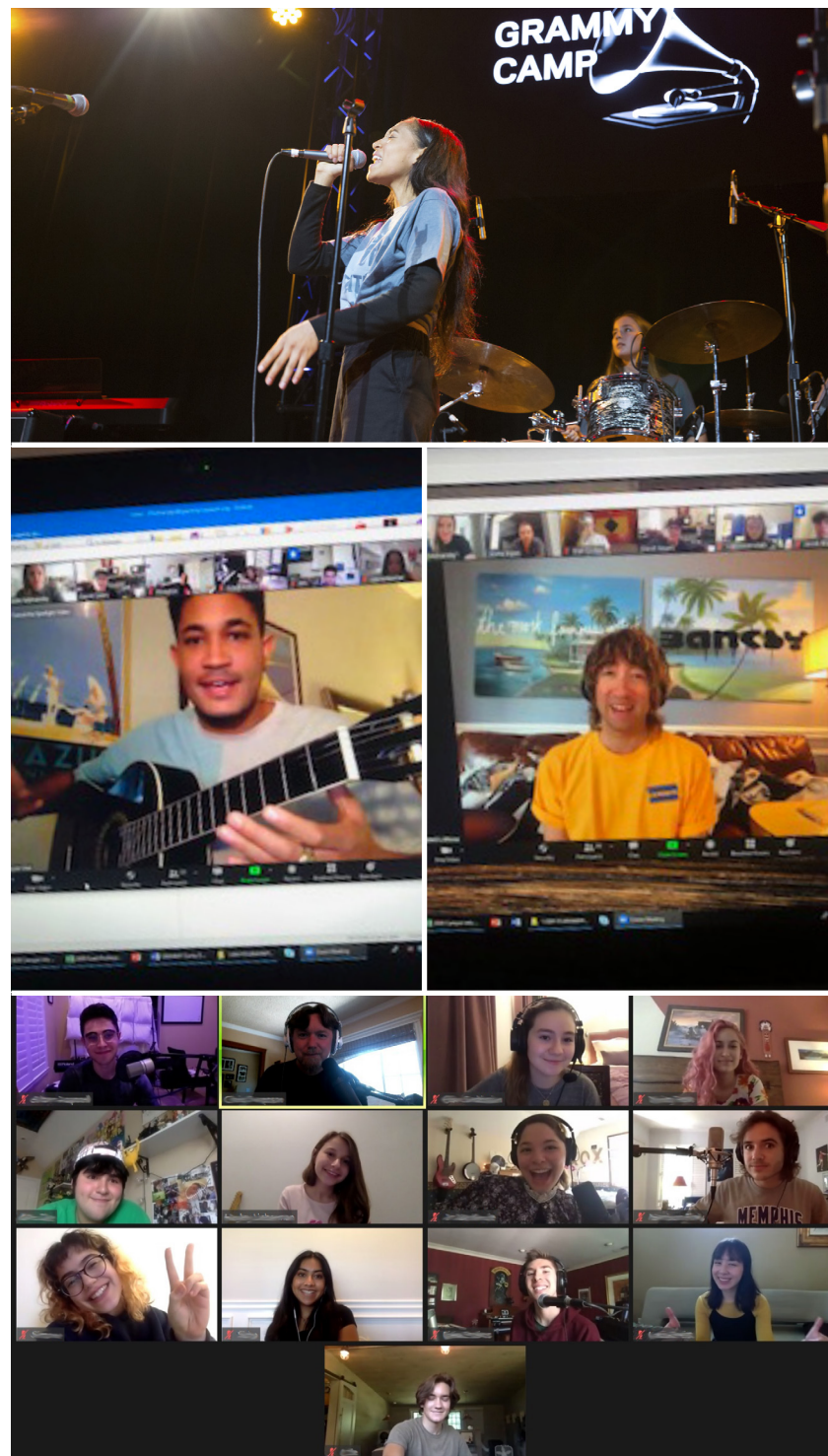
Throughout the fall and winter, our Education Department worked steadily to welcome more than 7,000 K-12 LA-based students to the Museum for tours and education workshops.

But when the Museum closed due to the pandemic, the Education team quickly shifted its focus to online learning to ensure that music education was still available and accessible to local students and their teachers. To meet these needs, we launched the GRAMMY In The Schools Knowledge Bank, a collection of more than 65 videos and mini-lessons all centered on music and careers in music.

We partnered with the Rock & Roll Forever Foundation to include study guides for all ages, covering topics such as the art of storytelling and the historical roots of hip hop.

As we moved into the summer, we also had to shift plans on two of our most popular careers in music-focused summer programs: GRAMMY Museum Summer Session and GRAMMY Camp. For the first time ever these flagship, week-long programs were seamlessly moved online; no small feat given the interactive and collaborative nature of both programs.

In total, 144 high school students from Southern California and around the country joined us virtually for Summer Session and the 16th annual GRAMMY Camp. Thanks to the efforts of our staff and the programs' dedicated faculty members, we were able to ensure that all of the participants had a meaningful and impactful experience, even if they couldn't meet in person.





# GRAMMY MUSEUM GRANT PROGRAM

\$200,000 GRANTED  
FOR MUSIC  
PRESERVATION  
AND RESEARCH

The GRAMMY Museum Grant Program, funded by the Recording Academy, provides funding to organizations and individuals to support efforts that advance the archiving and preservation of the recorded sound and for research related to the impact of music on the human condition.

Projects fall into one of three categories: Scientific Research, Preservation Assistance, and Preservation Implementation. On average, grants range from \$5,000 to \$20,000. This year, we granted a total of \$200,000 to 13 recipients for their work. To date, the Grant Program has awarded more than \$7.5 million to more than 400 grantees.



# 2020 GRANT RECIPIENTS

---

## SCIENTIFIC RESEARCH GRANTEES

**Ryerson University; Toronto - Awarded: \$20,000** To assess the impact of group singing on the psychosocial wellbeing of older adults and clarify the neurobiological underpinnings of these benefits. These findings may help promote non-pharmaceutical methods for supporting well-being in older adults.

**Music and Health Sciences Research Collaboratory, Faculty of Music, University of Toronto; Toronto - Awarded: \$20,000** To investigate and gain insight into the roles of genes (the Val66Met polymorphism) and music training on brain plasticity.

**Princeton University; Princeton, New Jersey - Awarded: \$19,758** To investigate the diverse questions regarding motor planning, prediction, and learning in the context of naturalistic music performance.

**The Research Foundation for the SUNY, University at Albany; Albany, New York - Awarded: \$19,320** Speakers of a tone language (TL), in which pitch changes alter word meaning, show advantages in music perception. Research will examine this effect with speakers of Copala Triqui, an indigenous Mexican TL, and test whether TL use influences the perception of musical emotion.

**University of Oregon; Eugene, Oregon - Awarded: \$20,000** To explore the link between empathic social processing and music emotion recognition. Results may inform novel treatment for people with social cognitive impairment, such as autism.

---

## PRESERVATION ASSISTANCE GRANTEES

**Experimental Sound Studio; Chicago - Awarded: \$5,000** To create an integrated plan for digitization and online dissemination of the Malachi Ritscher Collection, which contains more than 4,000 live recordings documenting the diverse underground music scene at the turn of the 20th century.

**Texas Folklife; Austin, Texas - Awarded: \$5,000** To develop a long range plan for digitization, long-term storage, backup, widespread dissemination, and accessibility of Texas Folklife, an extensive archive of audio recordings and related material of Texas folk.

---

## PRESERVATION IMPLEMENTATION

**Freight & Salvage; Berkeley, California - Awarded: \$20,000** To transfer 600 hours of recorded music by digitizing data from formats at the greatest risk of deterioration and by showcasing the influential traditional/roots musicians who performed at Freight & Salvage coffeehouse (1969–1989).

**The Kitchen Sisters Productions; San Francisco - Awarded: \$11,461** To catalog, digitize, preserve, and make publicly available the many music-centered stories and related recorded material in the Kitchen Sisters Archive, a collection of 7,000 hours of interviews, oral histories, music, and field recordings.

**Missouri State University Libraries; Springfield, Missouri - Awarded: \$18,000** For The Ozark Jubilee Digitization Project to continue the process of digitizing, describing, and providing free public access to a series of rare kinescopes of the Ozark Jubilee, a live, nationally broadcast that aired from 1955 to 1960.

**Smithsonian Folkways Recordings; Washington, D.C. - Awarded: \$20,000** To prepare and digitize 400 audio reels and corresponding materials related to Arhoolie Records' recordings of blues artists for preservation and online archival access.

**Roulette Intermedium; Brooklyn, New York - Awarded: \$10,000** To preserve, restore, catalog, and prepare for distribution and acquisition of 600 audio recordings captured at the New York concert hall from 2003–2011. The archive mirrors the cultural and social transitions of the last 40 years, documenting singular achievements in American music.

**The University of Pittsburgh Library System; Pittsburgh - Awarded: \$11,461** To digitize and preserve 210 hours of performances from its Emerging Masters Collection, documenting the University of Pittsburgh Concert Series.

# INCREASING ACCESS

The International Board of Credentialing and Continuing Education Standards designated the GRAMMY Museum as a Certified Autism Center™ (CAC) in early 2020.

The Certification recognized the hard work and dedication of our Community Engagement Department in the development of a unique program, Sensory Saturdays, which allows visitors with sensory sensitivities to enjoy the Museum in a private, turned-down setting. Front-line staff members also went through intensive training to meet the needs of visitors during this time.

This designation demonstrates our commitment to better serve individuals on the autism spectrum and further emphasize the importance of bringing music to the doorsteps of our diverse communities. We are proud to be the first destination to become a CAC in Los Angeles County and the first museum certified in California.





Steve and LeAnne with Hunter Hayes

# MEMBER SPOTLIGHT

Directors Circle Members Steven and LeAnne Schwartz are big fans of rock and roll. "Live entertainment has always been a hobby for us," says Steve, "so we first started coming to the Museum for the Public Programs. I actually have a running list of every program we've attended—and it's a long list!"

Steve and LeAnne may have first come for the music, but they stayed for the stories and the people they've met along the way. "For a while, we would attend the odd program, but what really hooked us and converted us to become

members was the California Dreamin': The Sounds of Laurel Canyon exhibit and film screening in 2014."

Since then, these philanthropists have been champions of the GRAMMY Museum, rarely missing an exhibit opening or program. And their support runs deep, frequently sharing their love of live music and the Museum with friends and new acquaintances—many of whom have gone on to become members themselves.



When they're not traveling (another big passion for them), there is a pretty good chance that you'll find them in the Clive Davis Theater, learning about a new band or reminiscing with their favorite artists. Or when the Theater is dark, they'll likely be taking in new exhibits or revisiting permanent ones. Steve, in particular, likes to go through the galleries one floor at a time before Programs, stopping to listen at every headset, reading every word of the thoughtfully written exhibit labels. "The Museum showcases a lot of history that I have grown up with," he says, "and the rotating exhibits keep my interest fresh. Not to mention the events in the Clive Davis Theatre, which keep me forever young."

When asked about their favorite exhibit, Steve and LeAnne couldn't pick just one, instead quickly coming up with an eclectic list of past exhibits, everything from

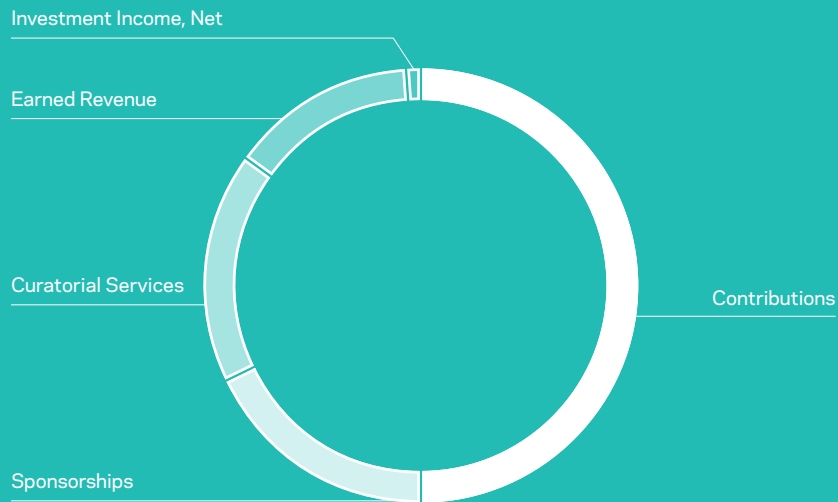
Marty Stuart's Way Out West: A Country Music and The Get Animated Invasion exhibition in 2018 to this year's signature exhibit, Beyond Black - The Style Of Amy Winehouse. "The exhibits, and the stories they tell, are just so interesting and well organized".

Beyond the exhibits and programs, there's also a deeper meaning to their generosity year after year: the educational impact. "It's endearing to know that our support allows the Museum to keep rock alive and bring in the next generation through the school programs and visits."

And for that, we are grateful. Rock on, Steve and LeAnne, rock on.

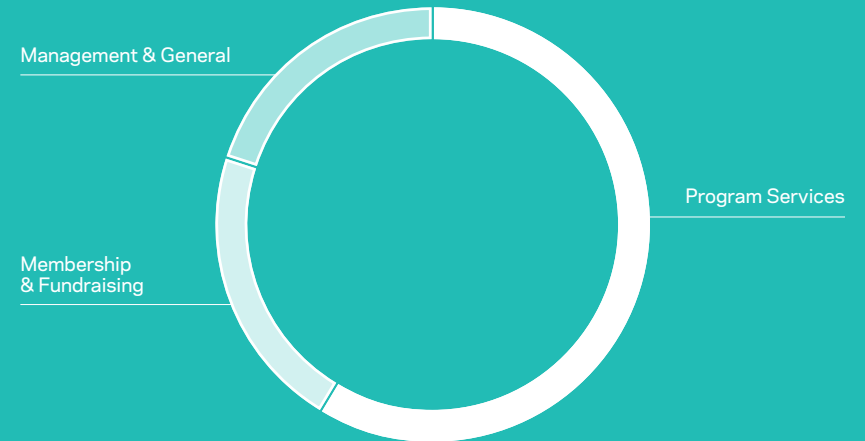
# FINANCIALS

Revenue 14,377,778



Contributions	7,133,007	50%
Sponsorships	2,593,271	18%
Curatorial Services	2,453,378	17%
Earned Revenue	2,049,523	14%
Investment Income, Net	148,599	1%
<b>Total</b>	<b>14,377,778</b>	<b>100%</b>

Expenditures 16,660,696



Program Services	12,688,246	76%
Membership & Fundraising	1,586,220	10%
Management & General	2,386,230	14%
<b>Total</b>	<b>16,660,696</b>	<b>100%</b>

Based on operating income and expenses; excludes other income/expenses related to non-operating sources

# MUSEUM LEADERSHIP

---

**Michael S. Sticka**  
President

**Rita George**  
Chief Operating Officer

**Bob Santelli**  
Founding Executive Director

**Hilary Fahlsing**  
Vice President of Finance  
and Administration

**Lynne Sheridan**  
Vice President of Artist Relations,  
Programs, and Content

**David Sears**  
Vice President of Education for  
GRAMMY In The Schools

# BOARD OF DIRECTORS

---

**Tim Bucher**  
Chair

**John Burk**  
Vice Chair

**Michal Katz**  
Treasurer/Secretary

**Pamela Alexander**

**Dan Beckerman**

**John Branca**

**Branden Chapman**

**Ken Ehrlich**

**Giselle Fernandez**

**Ted Fikre**

**Todd Goldstein**

**Brian Hoesterey**

**Jimmy Jam**

**Joel Katz**

**Terry Lickona**

**Andra Liemandt**

**Jay Marciano**

**Harvey Mason, Jr.**

**Mattie Mcfadden-Lawson**

**Chuck Ortner**

**Carolyn Powers**

**Brian Sheth**

# FISCAL YEAR 2020 DONORS

The GRAMMY Museum would like to thank the companies, foundations, and individuals listed here for their generous financial support during the 2019-2020 fiscal year.

## FOUNDING PARTNERS

---

AEG

American Express

The Recording Academy

## \$100,000 - \$999,999

---

Anonymous

Best Buy

Chuck Lorre Family Foundation

Ford Motor Company Fund

Harman International

The Hoesterey Family Charitable Fund

The Latin Recording Academy

**Brian and Adria Sheth**

## \$25,000 - \$99,999

---

Angelo Family Charitable Foundation

CauseMedia GroupCity National Bank

Disney Music Group

Herb Alpert Foundation

Hilton Hotels Global Headquarters

Iron Mountain

Kenneth T. and Eileen L. Norris Foundation

Leigh Shockey

## \$10,000 - \$24,999

---

ACM Lifting Lives

Judy Hart Angelo

Helena Bromidis

Timothy Cleland

Anna Guanche

**Michal Katz and Lance Bruck, M.D.**

Rick Lebrun

**Andra Liemandt**

Nuance

**Kirk Pasich**

**Steve and LeAnne Schwartz Family Foundation**

**Bold type** denotes GRAMMY Museum Member



## \$5,000 - \$9,999

---

A Good Print, LLC

**Gene Bednarchik**

**Bottini Family Trust**

**Tim and Mary Louise Bucher**

**Lexy and John Carroll**

CenterStaging

**Madeline, Jacob, Griffin,  
and Mikaela Cheng**

**Karen and Philippe Depallens**

Ella Fitzgerald Charitable  
Foundation

**Ted and Angela Fikre**

**Richard and Shari Foos**

**Ahmed Ghouri**

**Todd and Kim Goldstein**

H-E-B

**Jason Holland**

**The J2 Foundation**

**Deborah and Ivan Kallick**

**David Lachoff**

**David and Janet Lazier**

Mattina R. Proctor Foundation

**Julie and Brooks McKinney**

**Dennis and Mimi Muraoka**

**Pet Planet Realty**

**Neil Portnow**

Sony Music Entertainment

**Michael Sticka and Brian Kim**

U.S. Bank Foundation

**Alan Wong and May Wong**

**Stella Yap and Robert Allan**

**Wayne Zahner**

## \$2,500 - \$4,999

---

**John Branca**

**Claudia and Kevin Bright**

**Shannon Burns**

Adam Carroll

**Anne Dougherty and David Dobrikin**

Rita George

**Joel Katz**

**Stephen and Samantha Kaufman**

**Jay Marciano**

**Rene Merideth**

**Ida Miller**

**Micheal Neal and Karen Bizzini**

Sunil Patel

**William and Nanette Price**

**Michelle and Scott Salzman**

Damien Smith

**Joyce Szudzik**

**Steven Weinberg**

Ziffren Brittenham LLP

## \$1,000 - \$2,499

---

**Pamela and Paul Alexander**

**Kirk Ayers**

George Bandulovich

**Daniel Beckerman**

**John Burk**

**Branden Chapman**

Victoria Cradeur

Thomas Daring

**Kimberly Dawn-Fardad and  
Farshad Fardad**

Dr. Harry Drew

**Phyllis Dubinsky**

**Ken Ehrlich**

**Craig Erickson and Nancy  
Okasaki**

Tracy Flake

**Carl Fletcher**

**Sanjay and Tatiana Gaur**

Grant Geissman

**Lynn and Steven Gleim**

**Chloe Glenn**

**Phyllis Glock**

**Brian and Dawn Hoesterey**

**Preston Hopson**

**Jimmy Jam**

Victoria Johnson

Samantha Lecca

**Terry Lickona**

**Feysan Lodde**

The Loumpouridis-Mallin  
Family Foundation

**Harvey Mason Jr.**

**Chuck Ortner**

**Chris Pahl**

**Carolyn Powers**

Erica Reid

**Michael and Michon Roth**

**William Schneider**

**Kevin Simpson**

**Arlene Sommer**

Debra Turner

The Voice

## \$425 - \$999

---

<b>Tommy Atkins and Terri Dunn</b>	Edward D'Andrea	Garrett Key	NEED Production Services	David Sears
<b>Robert and Bonnie Bastian</b>	Peter Darker	<b>Laura Larson</b>	<b>Kevin and Don Norte</b>	<b>Ted Solomon and David Solomon</b>
<b>Brian Berman</b>	<b>Robert Aubry Davis and Patricia Brannan</b>	<b>Dee and Jeff Margolis</b>	<b>Delia Orjuela</b>	<b>Fernando Szew</b>
Blue Orbit Productions, Inc.	<b>Lori Desantis</b>	<b>Sara Martinez and Eddie Rodriguez</b>	Samadh Ravangard	Jason Taylor
The Brumberger-Gruber Foundation, Inc.	<b>Doug Endicott</b>	<b>Tani and Martin Mathias</b>	Jacqueline Record	Sandra Urbina
David Campbell	Fox Alternative Entertainment, LLC	<b>Mattie McFadden-Lawson and Michael Lawson</b>	John Russell	Tessa Viscosi
Rex Carlson	<b>David A. Helfant</b>	<b>Jeffrey and Ali Metzger</b>	Mark Satlof	<b>Shedrick Washington</b>
<b>Randy Chow</b>	Steven Jaffe	<b>Ronald Monkarsh</b>	<b>Rebecca Sattin and Robert Price</b>	Steven Thomas Welsby
<b>William Connor</b>	<b>Barry and Cathryn Kaye</b>	<b>Allison and Christopher Morris</b>	Dean Schaffer	<b>Samuel and Cynthia Young</b>
Counter Productions, Inc.	Crystal Keller	<b>Oscar and Laurie Narro</b>	<b>Anthony Scudellari and Douglas Dawson</b>	
<b>Christopher Craig</b>				

## \$60 - \$424

---

<b>Zarina Abramova and Paul Conrad</b>	<b>Jeff Allen</b>	<b>Tracey Andruscavage</b>	<b>Danielle Autore</b>	<b>Judi Barker</b>
<b>Stephen Abramson</b>	<b>Myrna Allen</b>	<b>Anonymous</b>	Alexis Ayala	<b>Cynthia Barnett</b>
<b>Cara Adams</b>	<b>Julie and Thomas Almeida</b>	<b>John Antich</b>	<b>Tess Ayers</b>	<b>Kayla Barone</b>
<b>Sibylle Addotta</b>	<b>Adriana Alonzo</b>	<b>Kristy Apana</b>	<b>Mahnaz Babaie</b>	<b>Alisa Barraza</b>
<b>Lorraine Aguilar</b>	<b>Ted Alpert and Yvonne Emus</b>	<b>Sonia Arce</b>	Adam Baca	<b>David Barrera</b>
<b>Eric Aijala</b>	<b>Angela Alvarez</b>	<b>Mark Arevalo</b>	<b>Krystal Bailey-Gauze</b>	<b>Brent Bartlett</b>
<b>Laila Alamiri</b>	<b>Robert and Lorrie Alves</b>	<b>Eddie Arias</b>	<b>Cole Baker</b>	<b>Richard Basch</b>
<b>Veronica Albano</b>	<b>Willa Amai</b>	<b>Janis Ashley</b>	<b>Corinne Baldassano</b>	<b>Melissa Battino</b>
<b>Edith Alcalá</b>	<b>Emma Anderson and Gabriel Kubitz</b>	<b>Greg and Dana Atkin</b>	Robert Ball	<b>Jonah Bauer</b>
<b>Eugene and Harriet Aldava</b>	<b>Susan Anderson</b>	<b>Merrye Atkinson</b>	<b>Diane Ballen</b>	<b>Brian Baumwoll</b>
<b>Irena Alexandrova</b>	<b>April and Alicia Andrews</b>	<b>Aaron Auerbach</b>	<b>Betty Baney-Neville</b>	<b>Beth and Orville Beach</b>
<b>Khairi Ali</b>	<b>Edward Andrews</b>	<b>Stephen Auerbach</b>	<b>Mario Barberio</b>	<b>Brandon Beals</b>

## \$60 - \$424 *CONTINUED*

---

Mike Bebb	Beth and Allison Bloom	Aurora Brinshot	Antonio Jose Camacho	Scott Chang
Maria Beck	Debbie Blount	Brett Briskin	Jennifer Camacho	Cesar and Marta Chavez
Patricia Beckmann	Craig Blumenthal	Brian Brizzolara	Joseph Cammiso	Abelardo Chavira
Marlyn and Tod Beebe	Shoshana Bocian	Karen Broberg	Frank Campbell Jr.	Larry Chew
Rosemary Beliakoff	Jennifer Bodaken and Allison Bodaken	Karen Brocato	Trina Campbell	Rhiana Chickering
Barry Belkin	Nancy and Paul Body	Alexander Brown	Cathy Campfield	Sandy Christensen
Delana Bellah	Stewart Bogen	Dana Brown	Peter Canon	Christie's
Joshua Bell	Negin Bolour	David Brownfield	Bruce Capucetti	Lynell Chun
Megan Bell	Casey Borland	LaShan Brown	Carlos Carcano	Mark Clark
Rebecca Beltran	Rives Borland	Tami Brown	Pamela Cardella	Doug and Loena Clarke
Heather Benfield	Mary Bosak	Rhonda and Dan Bruening	Matt Cardiff	Johnny Cleator
Christopher Benner	Joan Bowlen	Stephen Bryan	Brent Carpenter	Bart Coleman
L J Benoit	Dylan Bowman	Gina Buban	Rebecca Carpenter	Cathy Collette
Eric Benson	Benjamin Bowser	Michael Buchbinder	Debbie Carroll	Candace Collins
Michael Benton	Kathleen Boyd	Niki Budd and Gregg Nevens	Jill Carroll	Wendy Colton
Elayne Berg-Wilion	Ashley Boyer	Robert Burchuk	John Carroll	Carolanne Comparsi
M.E. Berman	Vanesa and William Boyle	Diana Burke	Shelby Casanova	Ed Congdon
Kayla Betts	Jonathon Bradley	Doug and Zack Burke	Paul Casella	Lorn Conner
Frank Bezbatchenko	Mark Brainard and Joy Valenza	Julie Burton	Dina Cerchione and Paul Walsleben	Dale Conrad and Jamie Aochi
Barbara and Stephen Bickel	Joseph and Juliet Brandolino	James and James Buss	Vanessa Chaidez	Carla Contreras
Anita Bishop	Sari and Don Brann	Mae Butler	Terry Chamberlain	Giselle Contreras
Lesley and Shirley Blancas	Nancy Brennan	Cathy Byrd	Fanny Chan	Pamela Coombs-Neaville
Jason Blauser	Francine Brenner	Miguel Caballero	Jessie Chandler	Susan Coon
Steven Bloch	Aliza Bresnick	Renei Caballes	Amanda Chang	Jay and Melissa Cooper
Brandon and Lisa Block	Andrea Bresnick	Denise Cadena	Gihee Chang	Theresa Cooper
Laurie Block		Susan and Barbara Calvin		Richard Cope

## \$60 - \$424 *CONTINUED*

---

Eugenia Copeland	Kelly Darr	Denise Donatelli	Mohamed Elabdallah	Cynthia and Peter Fanning
Susanne Cordle	Tiffany David	Julie Donnelly	Zeina Elabdallah	Mitchell Fanning
Alyssa Correa	Efrain Davila	Lynda Dorf	James Elicker	Tamara Farmer
Robert Corti	Heather Davis	sherri dorfman	Darren Elliott	Lisa Farris
Linda Cote	Miriam Davis	Pam Doty	Maya Elliott	Tina Fasbender
Erin Cottrell	Tamra Davis	Terry Doty	Melina Elliott	Linda Feferman and David Axelrod
Danielle Coughran	Rhea de Guzman	Scott Dougherty	James Ellis	Michael Feinstein
Daniel Cowell	Caroline De La Rosa	James Dowd	Drew and Lisa Elshoff	Shirley Felder
Jennifer Cox	Lisa Dee	Madelyn Droessler	Paige Elshoff	Marion Feller
Angie and Karen Craig	Rich Del Grosso	Dave Drucker	Gary Embleton	Christina Fennell
Scotty Crane and Zoe Taylor-Crane	Jessica DellaValla	Jyoti and Colin Drummond	Nikki Engelbrecht	Jacob Fenton
Teresa Crane	Bruce and Lauren Dembo	Jeffrey and Christa Duggan	The English Family	Giselle Fernandez
Holli Dee Crawford	Bryan Denove	Glen Dunbar	Joan English	James and Belinda Ferrell
Marina Crawford	Stefan DeSalazar	Richard Dunn	Janice Ennis	Kathryn Ferrua
Alan Croft	Tom DeSavia	Elodia Duque	John Ensey	Amanda Feuerman
John and Stacey Crouch	Heidi DeSimone	Rhea Duschinsky	Amy Eppler	Lisa Fields
Alma Cruz	Julia Devine and Edwin Letcher	Robert and Kathleen Dutton	Sue Epstein	Victoria Figueroa
Shelly Culbertson	Lee Diaz	Clara Earthly	Kurt Ericson	Cecelia Findorff
Jeanine Cummins	Jeannette Dickens	Bernadette Echivaria	David Eshaghpour	Tilley Fine
John Cunningham	Roger Dickens	Sterling Edward	Ernest and Rachelle Espinoza	Glen Firstenberg
Richard Dahlman	Vicki and Jon Didier	Teresa Edwards	Yvette Espinoza	Jason Fischer
Courtney and Ryan Damico	Maya and Hung Diep	Martine Ehrenclou	Gabriela Esquivel	Frederick Fisher
Dale Daniel	Dwight Dill	Eric Eichorn	Rob Evanoff	Mindi and Bruce Fisher
Marissa Daniel	McKenna Dingman	Daniel Einstein and Marsha Goodman	Sarah Ez Zaaraoui	Matthew Fleming
Clint Daproza	Dona Maria	Lars and Lori Ekstrom	Steven Fait	Doug Flores
			Auregan Falip	

## \$60 - \$424 *CONTINUED*

---

Andrew and Eva Fogg	Dolores Gamble	Rene Goiffon	Debra Gussin	Jim Hasenauer and Christie Logan
Michael Fong	Jasmine Gano	Alan Goldberg	John Guth	Shelley Hasselbrink
Mikayla Foote	Michelle Garcia	Andrew Goldman	Miriam Gutierrez	Jamey Hastings
Gary Forbush	Maria Garcia-Barajas	Ron Goldshine	Christinna, Nicholas, and Paul Guzman	Robert and Julia Hauldren
Bridget Fornaro	Susana Gardner	Fred and Betty Goldstein	Michael Hacker	Dianne and Kelley Hawke
Donald Foster	Teresa Garduno	Glenn and Susan Goldstein	Judith Haenel	Jeff and Maureen Hawke
Janine Fowler	William Garretson	Alma Gomez	Becky Hagedorn	Evelyn Hawson
Betty Fox	Chris Garrido	Joan Gomez	David Hahn	Eugene and Tine Hayden
John and Tranquilla Francis	Helene Gebbia	Alicia Gonzalez	Dale Hall	Russell and Gema Healey
Stella Franco	Richard Gehr	Amilcar Gonzalez Guzman	Danny Haloosim	Sharon Hearn
Derek Frank and Annette Frank	Nicole and Kerry Gelbard	David Goren	Louis Halper	Steven and Brooke Heath
Cheryl Franko	Nicole Gennaoui	Carl and Kathy Gorenberg	Letenia Hambarchian	Jeanne and Grace Hebert
Jodie Fratantuno	Elizabeth George	Shelly and Bill Gorenstein	Nancy Hamlin and Laurence Berman	James Hecht
Cathy Fratesi	Ted Gerdes	Dee Gornowicz	Matthew Harding	Ralph and Cathleen Heimann
Ron Frederick	Steve and Debbie Gewecke	Rachel Gottfried	Karen and Denny Hardwick	Doris and Joseph Helfer
Peggy French	Virginia and Michael Gibbs	Ronda Goudeau	Richard Harper	Mark Helfrich
Mark Frey	Russell Gilbertson	Matthew Gracia	Greg Harrington	Doris Hellmann and Kevin Halloran
Michael Frey	Elliott Gilder	Susan Graham	Dawn Harris	Monica Henriksen
Madison Frink	Justin Gile	Sara Gray	John and Joanne Harris	Diane Henschel
David Fryden	Jacob Giles	Les Green	Dorian Harriston	Alicia Hernandez
Kamren Fuartado	Lawrence Ginsberg	Andrea Greene and Jan Greene	Cozette Hart	Elizabeth Christine Hernandez
Glen and Jenna Fujimoto	Jackie Gitmed	Michael Gresch	Erica Hartman-Roth	LesLee Hernandez
Paige Fullbright	Jeralyn Glass	Sharon Greth	Ross Hart	Marc Hernandez
Nina Furukawa	Sarah Glicken	Joe and Laurie Guglielmo	Julia Hartung	Tanya Hernandez
Amy Gall	Rosalind Goddard	Victor Guiseppe		
	Linda Godleski			

## \$60 - \$424 *CONTINUED*

---

Kelley Herrington	Nicole Husby	Cheryl Junod	Erik Keskinen	Stanley Kruszeski
Renee Heston	Amy and Todd Hutchings	Elizabeth and Howard Kahn	Amjad Khan	Aimee Kuan
Andrew Heverling	Joanie and Tim Huth	Mary Kalista and Jim Becker	Ali Kharestan	Brittany Kula
Kathryn Hibbs	Rebecca Hyrkas	Steven and Dillon Kaller	Frank and Linda Kilpatrick	Matt Kurzweil
Deveda Higgins	Hidehito Ikumo	Diana and Terry Kamibayashi	Jennifer Kim	Steven Kusnitz
Justin Higuchi	Darryl Jackson	Debbie Kanegawa	Lynn Kimotsuki	Chris Kyllander
Samuel Higuera	Julie Jacobs	Clyde Kaplan	Adam Kinsinger	Thomas Labonge
Carly Hinton	James Jacquet	Marty Kaplan	Randi Kinsler	Stefanie Lalvay
Mara Hitner	Jordyn Jaffe	David Karpinski	Erin Kintzer	Bradshaw Lambert
William Hochberg, Esq.	Jennifer Jardine	Christopher Katrandjian	David Klapper	Rachel Lamothe
Robert S. Hodas	Candy and Alan Jennings	Alan Katz and Imelda Buenaflor	Cody Kline	Joshua Landzberg
Rand Hoffman	Hanne Jensen	Joseph Kaufman	Ginny Knizan Krupp and Josh Krupp	Joanna and Jim Lang
Colleen Hogan	Fabiola Jimenez	<b>Robert Kaus</b>	Kathryn Knox	Tim and Holly Larsen
Cynthia and Rolf Holbach	Leticia Jimenez	<b>Edward Kavanaugh</b>	Andrea Kolb	Dawn Laureen
Ralph and Sandra Holguin	Kristina Johnsen	Anthony Keaton	Nikhil Korula	Robert Laurens
Lisa Holloway	Lori Johnson Malveaux	William Keenan	Marisa and Michael Kouroubacalis	James LaValle
Brian and Mary Kay Holmes	Christine and Patricia Johnson	Stephen Kefalas	Marcy Kraft	Mylene and Myriane Lavoie
Brian and Deborah Honda	Jeffrey Johnson	Kathy Keith	Sharon Kramer	Floyd Lawson
Jonathan Hopwood	Thomas Johnson	Beverly Kelly	Matthew Kravitz	Kenneth Laycock
Eldon Horst and Justin Brooks	John Beverly and Roslyn Jones	Tara Kelly	Doug Kresse	Kelvin Le
David Howard	Leslie Ann Jones	Lynda Kennedy	Adam Kreuter	Andrew Lee
James Huang	Ivonne Jorif	Teresa Kennedy and Jose Matud	Heather and Borivoj Krgin	Gene Lefebvre
Gordon Hubel	Katia Juarez	Evan and Karen Kent	John Krick	Keith and Kerry Leisner
Stephen Hunter	Jacqueline Juico	Jeffrey Kerezman	Debbie Kruger	Laura Lekesiute
Tammy Hurt	Cynthia Juno			Lauren Leon
Lyssa Hurvitz				Grant Leonard

## \$60 - \$424 *CONTINUED*

---

Lotus Leong	David Lominac	Elizabeth Mallonee	Patrick Matera	Boiadjian
Sonia Leslie	Adam Londy	Anamarie and Jessica Maltzman	Vernon Matsushita	Peter Mendelsohn
Adam Levine	Jerrold Longoria	Thomas Manderfeld	David Maybach	Alexa Mendez
Danielle Levy	Bill and Cynthia Lopez	Gary Mangone	Jacqueline Maznio	John Mendoza
Marilyn Levy and Marcha Swinton	Cathy Lopez	Serena Manjur	Beverly Mc Nicholl	Brenda Meza and Juan Barajas
Karen Lewis	John Lopez	Craig Manning	Hugh McCallum	Rene Michael
Keith and Sheri Lewis	Lisa Loukinen	Arlene Mansour	Chris McCormack	Maya Michaelian
Kevin Lieberman	Rachel Lovey	Orestis Manthoulis	Lea and Gerald McCormick	Dean Micheli
Linda and Lemuel Ursery- Fleming	Patricia Lowry	Jose Mantilla	Stacey McDonald	Dani Miller
Janice Lindgren	Nancy Lucero	Aimee Manwarren	David McEowen	Denise Miller
James Lindsay	Ayda Lucero Fleck	Michael Many	Brian McEvoy	Christine Miller-Friedel
Renaë Lindsay	Karen Luhmann	Judie Marcuse	Debbi McFall	Irwin and Carol Miller
Philip Lindsten	Camila Luna	Jonathan Margolis	Tim McKenna	Robert Miller
Zhuo Ling	Sheri Lunn	Jonathan Margolis	Meredith McKinley	Michael Minky
Burt Linnetz	Bryan and Valerie Lutz	Jay and Melissa Margulies	Darcy McLaughlin	Kelli Bean and Claudio Miranda
Sharon Lippman	Paul and Lauren MacDougall	Giana Marie	Shannon McMann	Charles Mirkovich
Sharon Lizerbram	Steve Macfadyen	Jaime Mariscal	Jo McMullen	Avi Miron
Jose Llanas	Ira Madison III	Karen and Jay Mark	Darrell McNeill	Joseph Mirrione
BJ Lobermann	Juan Magdaraog	Nancy Marrow	Murray McQueen	Erin Miskey
Cindy Locke	Brandon Maggitt	Layla and Shannon Marrs	Cindy Mediavilla and Tim Ahern	Krishan Mistry
Connie Lockhart	Janiva Magness	James Marshall	Laura Medina	Joanne Miyawaki
Michael Lockitch	Ana Mahoney	Peter Marston	David Medrano	Kirk Mizubayashi
Joseph Locurcio	Quinn Mai	James and Christina Martin	Andrew Meepos	Brenna Moeljadi and Kellin Haley
Carlo and Shannon Loffredo	Diana Maiman	Deborah Martin-Dominick	Valerie and Irwin Mehlman	Blas Molina
	Teresa Malconian	Daphne and Robert Masin	Lora Mekikian and Alice	
	Peter Malek	Joe Massing		

## \$60 - \$424 *CONTINUED*

Rebecca Moline	Brianne Nelson	Heawon Paick	Lewis Peterson	David Price
Cynthia Morales	Caitlin Nelson	Donald Palazzo	Bess and Edward Petlak	Stephen and Nicole Pritchard
Yesenia Morales	Peter Nelson	Maria Palmer	Nicholas Pfeiffer	Chance Propps
Sabrina Moran	Selimah Nemoy	Robert Palmer	Sarah Phelps	Annie Provenzano
Michael Moray	Trisha Nerney	Nicole and Victor Palumbo	Ken Pieschke	Anthony Pur
Robin More	Dale Newman and Susan Hayden	Sam Pan	Robert Pietranton	Joseph and Judi Purcell
Richard Morey	Hope Nguyen	Robert Paris	Bonita Pilgram-Perkins	Suzanne Putnam
Genevieve and Nicky Morgan	Ilene Nice	Thomas Paris and Lauren Smith	Joseph Pino	Ericka Marielle Puyat
Alison Mori	Allan and Rivka Night	Jeff Paskil	Susan and Dan Pittaway	My Quach
Lorraine Morland	Beth Nikodem	Pierre Patrick	Jill and Sera Piwowar	Janet Quinn
Gleyenna Morris and Joni Holdsworth	Nick Nikoian	Pamela and Debbie Pearson	Rick Pleczko	Paola Quintana Fernandez
Jamie Morris	Olena Nikolenko	Timothy Pedersen	Karen Pointer	Artemio Quintana Martinez
John Morrison	Steven Nosenchuck	Jerry Pedrotti	Katherine and James Poisson Dickhoner	Jillene Rackemann
Lisa and Mike Moskowitz	Joy Oaks	Sofia Pelletiere	Kathleen Politis	Patricia Rainer
Jamil Muasher	Patricia O'Brien	Marie Peluso	David Ponak	Mitch Ramey
Fred Muir	William Ochoa	Steven Penn	Joseph and Helen Pontillo	Gia Ramos
Alfred Mukum	Michael Oldag	Steven Pennington and Trina Alexander	Christine Poole	Radhika Rathinasabapathy and Fabien Curto Millet
Prisca Muljadi	Melissa Olguin	Amanda Peralta	Heather Poole	Martin Rayala
Andrea Murphy	Eustace and Deborah Olliff	Joanne Peressini	Angela Portillo	Cari Redington
Barry Nadell	Barbara Oltman	David Perez	Roberta Posey	Gregory Reed
Daryl Nagamine	Cynthia O'Neal	Eduardo Perez	Steve Potts	Susan Reed
Charles and Margaret Nardoni	Sydney and Ron Orenstein	Paula Perrin and Paula Thompson	Barbara and Sonia Powers	David Regan
Richard Nathan	Jerry Osterkamp	Norm Peters	Lugh Powers	Noah Reich
Tara Neal	Christopher Otazo	Darla Peterson	Joyce Pratt	Michael Reines
Andrew Nelson	Andrew and Susan Paciocco		John Prentice	Xiaofeng Ren



## \$60 - \$424 *CONTINUED*

---

Lane Renfort	David Ross	Bridget and Amanda Sanchez	Scott Schwartz	Debra and Adam Silbar
Tom Reul	Helene Ross	Evelyn Sanchez	Raffaele Sciacca	<b>Chad Silver</b>
Eve Reynolds	Karen Ross	Kimberly Sanchez	Courtney Scott	Larry Silver
Patricia Richardson	Jennifer Roth	Marcia Sanchez	Laura and Mark Segelman	Suzanne Silverstein
John Rico	Roma Roth	Mia Sanchez	William and Dorothy Seles	<b>Gregory Simon</b>
Jeffrey and Sheri Ries	Terry and Howard Rubinroit	Michael Sanchez	Ryan Selewicz	<b>Kenneth and Margret Sitarski</b>
Lori Rigo	Gilda Rubio	Michelle Sandoval	Becky and Gary Seo	Jeremy Skaller
Mark Rikess	Renee Rubio	Alma Santillan	Jay Shafran	<b>Patrick and Debra Skelton</b>
Kelsi Ring	Jade Ruiz	Cylvia Santillan	Doug Shane	<b>Tia Skulski and Gary Benjamin</b>
Lynn and Bill Ring	Corbin Russell	Maria Santopoalo	Reid Shane	<b>Peter Skuts</b>
Ken Rissolo	Erin Russell	Becky Sapp	Achikam Shapira	<b>Gary Slavin</b>
Thomas Ritter	<b>Peter Rustin and Leslie White</b>	Dominic Sarabia	Arlene Shapiro	<b>Connor Smith</b>
Damaris Rivera	Steven Ruth	<b>Michelle and Robert Sarrow</b>	Rebecca Shapiro	<b>David and Cheryl Smith</b>
Jill Rivers	Susan Ruth	Nanci Sauder Ruest	Cecilia Sharbel	<b>Jacqueline Smith</b>
Ljubica Roberts	John Ryan	Jasmine Saylor	Robert and Cheryl Shaw	<b>Jessica Smith</b>
Mark and Pamela Robinson	Dan Saborio	Lori and Rick Schaefer	Erin Shea	<b>Marion Smith</b>
Alexandra and Anthony Robles	Minerva Salas	Alan Schneider	Justin Shearer	<b>Patrick Smith</b>
Jacky Rodarte	Fernando Salazar and Joseph Escobar	David Schneider	Julie Sheen	<b>Ron Smith</b>
Josh Rodgers	Leonard Salazar	Jonathan Schneider	Sharon Shimony	<b>Veronica and Richard Smith</b>
Herman Rodriguez	Yvonne Salazar	Heather Schon	Daniel Shott	<b>Brenna Snider</b>
Vanessa Rodriguez	Elisa Salcedo	Robert Schrader	Logan Shroyer	<b>Susan Solt</b>
Yolanda Rodriguez	Rex Saldana	Sandy Schuckett	Jeff Shuman	<b>Rodney Sondreal</b>
Luiz Romera	Anthony Saleh	Felice Schulman	Jamie Sida	Sony Interactive Entertainment LLC (Playstation)
Charles and Tracy Rosenbach	<b>Mr. Jeff Salmon</b>	Tracy Schultze	Scott Sidel	<b>Beatriz Sousa</b>
Bradley Ross	David San	Matthew Schumaker	Bryn Siegelman	
		Rochelle Schwartz	Susan Siering	

## \$60 - \$424 *CONTINUED*

---

William and Sharon Spaeder	Jeremiah Sullivan	Bernadette and Lawrence Tolliver	Gabriel Vega	Eric Walters
Pattie Spaziani	Brad Summers	Rico Topazio and Barbara Moore-Topazio	Briana Velasquez	Will Washabaugh
Chris and Maureen Speer	Don Sundstrom	Pamela and David Tracy	Lorena Venegas and Antonio Velasco	Lindsay Wasserman
Colette and Gabriel Speer	Ryan Sung	VanAn Tranchi and Jason Frasca	Kayleen Verity	J Waters
Sarah Spence	Patricia and Kevin Sutlick	Tina Treadwell	Tracie Verlinde	Kristina Waters
Michael Spindler	Gale Swartz	Stephanie Trujillo	Jonathan Verrier	Debbie Watts
Theresa Spink	Madison Sweere	Melissa Turner	Natalie and John Vesely	Ray and Lynne Wedaa
Amy Sriberg	Akiko Takeshita	Ira Tyler	Christine Vidovich	Steven and Becky Weinberg
Liran Stark	Lauren Talley	UBS	Virginia Villanueva	Michael Weinman
Shannon Starks	Julie Tatsumi and Jorge Alvarez	James Umgelter	Alexandra Villareal	Colette Weintraub
Sabrina Starr	Gloria Taylor	Abigail Umoh	Katherine Vinson	James Weisenbach
Eugene Stein	Monique Taylor	Giancarlo Ushella	Alena Vizgalava	Warren Weitzman
Lauren Steindler	Robert Taylor	Jeanne Usonis	Christine Vlasak	Luke Welch
Marcy Steinhart	Greg and Rebbeca Terlizzi	Elizabeth Valadez	Karen and Rich Votava	Andrea Wertheim
Jae Steinic	MD Thames	Lindsey Valdovino	Lisa and Josh Vu	David Wexler
Diane Stellman	Angelique Thermes-Martin	Vamplified	Natalie Wade	Eric Wexler
Michele Stephens	Jeanne Thompson	Michael Vance	Ryan Wagner	Cherie White
Lisa and Scott Stern	Joshua Thompson	Tina VandenHeever and Adria Allen	Richard Walden	Joshua White and Heather Luna
Hugh Stewart	Theodore Thrasher and Estelle Atney	Thomas Vandermillen	Lisa Walder	Lauren Wilkinson
Brian Sticka	Dennis Tie	Roy Varga	Chuck and Dana Walker	Jill Williams
Emily Stough	Ben and Sissy Timmerman	Jasmine Vazquez	Lois Walker and Tom Brandau	Gayle Williamson
Lisa Stranahan	Judith and Jody Timmerman	Azucena Vazquez Santiago	Amy and David Wallace	Gary Wilson
William Strauss	Jessi Todden	Eleanore Vega	Lisa and Tim Wallender	Judy Wilson
Gerald and Rachel Stringer	Gwendolyn Tolbert		Doug Walsh and Shelley Rega	Noah Wilson
Alan Strommer			John Walsh	Randy Wilson
Jennifer Studer				

## \$60 - \$424 *CONTINUED*

---

<b>Ray and Beth Wilson</b>	<b>Dave Witherow</b>	<b>Geoffrey Yarema</b>	<b>Beverly Young</b>	<b>Peter Zimmerman</b>
<b>Brandon Windsor</b>	<b>Kevin Withrow</b>	<b>Martha and Yeu-Wei Yee</b>	<b>Ken Yuen</b>	<b>Angelique Zobel-Rodriguez</b>
<b>Joshua Winget</b>	<b>Forrest Wolfe</b>	<b>peter yeung</b>	<b>Abas Zadfar</b>	<b>and Mario Rodriguez</b>
<b>Tomas Wischerath</b>	<b>Christopher Wood</b>	<b>Dylan Yolles</b>	<b>Aleksandra Zagozda</b>	<b>Jordan Zucker</b>
<b>Ronald Wishnack</b>	<b>Jeffrey and Laurel Wruble</b>	<b>Michelle and Andrew York</b>	<b>Beverly Zaslow</b>	<b>LeAnn Zunich</b>
<b>Joseph Wissert</b>	<b>Linn Wyatt</b>	<b>In hea Youm</b>	<b>Marcia Zimmer</b>	<b>Linda Zupan</b>

## L.A. LIVE PARTNERS

---

<b>AMEX</b>	<b>East West Bank</b>	<b>Roland</b>
<b>Coca-Cola</b>	<b>Fox Sports West</b>	<b>Toyota</b>
<b>Delta Airlines</b>	<b>Harman</b>	<b>Union Bank</b>

## LIFETIME MEMBERS

---

<b>Dr Joseph and Kelsy Del Priore</b>	<b>Harry Lange</b>
<b>Samuel Fox, MD</b>	<b>Leon Serchuk, MD</b>