

ConAgra
Foods®
HAWAII
BOWL™

OFFICIAL GAME PROGRAM

Hawai'i
Warriors
vs.
Green Wave

December 25, 2002
Aloha Stadium

\$2.00

ConAgra
Foods

LIKE THE WARRIORS, MURANO TRAVELS WELL.



Introducing the one SUV especially designed for the way city dwellers live. Darting in and out of traffic. Powering up an H-1 on-ramp that's way too short. Getting to the stadium in time for a little tail-gating. With more techo-wow than a small military post, Murano is built for the kind of adventures that happen only on the road.

**The Nissan Murano.
For your adventures in on-riding.**



SHIFT the road

ConAgra Foods Hawai'i Bowl



Aloha and welcome to the ConAgra Foods Hawai'i Bowl in beautiful Honolulu, Hawai'i! All of us at ConAgra Foods are proud to be a part of this exciting football bowl game that's played on a holiday we've been helping you celebrate for years.

Most holiday celebrations involve food — and that is what ConAgra Foods is all about — bringing family and friends together around a delicious Butterball turkey or a piece of pie topped with Reddi-wip.

You may know ConAgra Foods for the many food brands we bring to America's table. They include Healthy Choice, Hunt's, Orville Redenbacher's, Slim Jim and Banquet. The men and women of ConAgra Foods make these and dozens of other brands that you know and love.

We say "We set America's table at home and away" not only because our products are in virtually every aisle and section of the grocery store, but also because you'll find our foods at your favorite lunch counter, concession stand or white tablecloth restaurant.

Our thanks to Evan Dobbelle, president of the University of Hawai'i; Herman Frazier, athletics director of the University of Hawai'i; Hugh Yoshida, previous athletics director of the University of Hawai'i; Karl Benson, Western Athletic Conference commissioner; Mike Slive, SEC commissioner; Britton Banowsky, C-USA commissioner; Jim Donovan, executive director of the Hawai'i Bowl; and Pete Derzis, senior vice president of ESPN Regional Television for making ConAgra Foods a part of this holiday event.

We welcome you to the ConAgra Foods Hawai'i Bowl and hope you enjoy the game!

A handwritten signature in black ink, appearing to read "Bruce Rohde". The signature is stylized and fluid.

Bruce Rohde
Chairman and CEO
ConAgra Foods, Inc.



Table of Contents

Hawai'i Governor Linda Lingle6
 Honolulu Mayor Jeremy Harris7
 ConAgra Foods Hawai'i Executive Director8
 Hawai'i ConAgra Bowl Conferences.....13
 University of Hawai'i14
 Tulane University.....16
 ESPN Regional Television21
 Matchup: Hawai'i vs. Tulane22
 Hawai'i Warriors Coaching Staff26
 Hawai'i Warriors Alphabetical Roster36
 Hawai'i Warriors Numerical Roster38
 Tulane Green Wave Alphabetical Roster.....39
 Tulane Green Wave Numerical Roster40
 Tulane Green Wave Coaching Staff.....42
 Meet the Tulane Green Wave56
 Meet the Hawai'i Warriors68

Editor Jeff Nicolay ■ **Layout/Design** Davin Iyamatsu ■ **Special Mahalo** UH and Tulane Sports Information Departments
 The sports program is a product of the Custom Publishing Group of **The Honolulu Advertiser**

University of Hawai'i vs. Tulane University

December 25, 2002 ■ Aloha Stadium ■ Aiea, Hawai'i



UH Warrior Timmy Chang



Tulane Green Wave J.P. Losman



HAWAII'S TEAM



TEAM CLEAN INC.

Residential & Commercial

"YOUR COMPLETE HOUSEKEEPING & KITCHEN SERVICES COMPANY"

*Guaranteed Emergency Response
24 Hours a day - 7 days a week*

- Professional Carpet Cleaning
- Professional/Uniformed Technicians
- IICRC Certified
- Best Truck-Mount Equipment In Hawaii
- Hawaii's Choice For The Best Hotels & Resorts

**944-8255
TEAM CLEAN INC.**

"100% Service Guarantee"
www.teamclean.biz



TEAM TECH

AUTOMOTIVE AND TECHNICAL REPAIR SERVICE

"THE FINEST AUTOMOTIVE AND TECHNICAL FACILITY IN THE ISLANDS"

- ASE Certified Technicians
- State Of The Art Fleet Maintenance Program
- Quality Parts & Equipment
- Integrity in Price and Performance
- 100% Satisfaction

Services Include:

Computer Analysis
Tune-Up
Brake Service and Repair
Air Conditioning and Heating
and More...



**848-7711
TEAM TECH**

345 Mokauea Street
Mon - Fri: 8am - 5pm
Sat - Sun: 9am - 12pm
www.teamtechhawaii.com



Welcome

Mele Kalikimaka Me Ka Hauoli Makahiki Hou. It is my great pleasure to welcome you to the inaugural ConAgra Foods Hawai'i Bowl. I extend a heartfelt "aloha" and best wishes for the Christmas season to those attending today's game and thank you for supporting the nationally ranked University of Hawai'i Warriors and the University of Tulane Green Wave.



Hawai'i Governor **Linda Lingle**

The leadership we have at the University of Hawai'i sports department is a source of great pride in our local community. In four seasons at the helm of the University of Hawai'i football program, Coach June Jones has produced four seasons with nine or more wins, five All-Americans, 52 all-conference performers and five NFL draft picks. Former Olympic gold medalist, Herman Frazier, recently became the new athletics director at the University of Hawai'i, and we wish him well.

It's wonderful that college football has returned to Aloha Stadium on Christmas Day, a tradition that began in 1982. There have been so many memories that have been provided to visitors and fans from around the world. Today, the tradition continues.

There is certainly much that is unique about our Aloha State. Visitors to our islands find beaches and mountains of unmatched beauty, thriving communities of amazing cultural diversity, places of historical significance, a staggering array of shopping choices, and delicious foods to sample.

On behalf of the State of Hawai'i, I thank the football players, coaches and their staff for serving as positive role models in their commitment to excellence. I extend a very happy holiday season and New Year's to you and hope to have you visit with us again soon.

With sincerest aloha,

Linda Lingle
Governor, State of Hawai'i

Aloha and welcome to the ConAgra Foods Hawai'i Bowl, an exciting college football game in one of the most spectacular settings in the world.



Honolulu Mayor **Jeremy Harris**

I invite everyone to sit back and enjoy Christmas Day and the best of college football by watching two excellent football teams face each other in this first-ever ConAgra Foods Hawai'i Bowl. ConAgra Foods, ESPN and the University of Hawai'i have done an outstanding job in bringing back to O'ahu this popular tradition of post-season college football.

Mahalo to everyone involved for making this game possible, and the telecast which will be viewed by millions of fans across the nation, offering a valuable opportunity to showcase the beauty of our islands.

Congratulations also to the University of Hawai'i and Tulane University football teams, who have earned the right to play in today's bowl game. I hope that the players, coaches, fans, boosters and other visitors from Louisiana enjoy their stay here in Honolulu.

On behalf of the citizens of the City and County of Honolulu, I wish everyone Mele Kalikimaka E Hauoli Makahiki Hou.

Jeremy Harris
Mayor, City and County of Honolulu

Whatever you imagine your home to be, whether you're remodeling, refinancing or buying, there's a home mortgage loan at American Savings Bank that suits your needs perfectly.

Call our Residential Loan Officers and let us help you make your dream a reality.

MAKE ROOM FOR DREAMS



Oahu 593-1226 • Maui 872-4999 • Kauai 632-5050 • Hilo 933-7599
Kona 323-2967 • Waimea 885-6014 • Toll Free 1-800-293-2878



www.ASBhawaii.com





ConAgra Foods Hawai'i Bowl Executive Director

Aloha! On behalf of the ConAgra Foods Hawai'i Bowl, it is my pleasure to welcome you to Aloha Stadium and the inaugural bowl game. Today you will witness two deserving teams battle for the first ConAgra Foods Hawai'i Bowl trophy. We congratulate Tulane and Hawai'i on their successful seasons.

Over the past six months, many people came together to make this a successful event. The fans, the institutions and the local community have contributed to the operation of the ConAgra Foods Hawai'i Bowl. We take great pride in the hard work and support received from everyone involved.

I would especially like to thank our Executive Committee for their leadership and for dedicating their time:

John Aeto
Keith Amemiya
Jack Bates
Patrick Bullard
Don Clephane
James J. Donovan III
John Fink
Dennis Francis
Herman Frazier
Eddie Hayashi
Allan Ikawa
Bert Kobayashi
Don Murphy
Ernest K. Nishizaki
Roger Reeves
Maryann Sacharski
Mike Shibuya
Lois Sismar
Ray Stosik
Debbie Weil-Manuma
Hugh Yoshida
Gary Yoshioka



Cox Radio Hawai'i
HHSAA
Star Seigle
AdWorks
Oak Tree Securities
ConAgra Foods Hawai'i Bowl
KHNL
The Honolulu Advertiser
University of Hawai'i Athletics
Aloha Stadium Authority
Big Island Candy
Kobayashi, Sugita & Goda
Murphy's Bar and Grill
Kyoya Company, Ltd.
Sodexo Services
Oceanic Cable
Paradise Beverage
Volume Services America
141 Worldwide
Weil & Associates
University of Hawai'i Athletics
Pepsi-Cola

Again, thank you for your support of the ConAgra Foods Hawai'i Bowl, and enjoy this exciting event!

Mahalo,

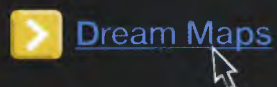
James Donovan III
Executive Director
ConAgra Foods Hawai'i Bowl



travelocity can

take you places where you tell time by the heat of the sand.

AOL Keyword: Travel



Our [Dream Maps](#) let you enter a price and tell you where you can go in the world. Travelocity has the tools to plan, tools to save, tools to make your trip better.



Travelocity
A Sabre Company
1-888-TRAVELOCITY

©2002 Travelocity.com L.P. All rights reserved. Travelocity, Travelocity.com and the Travelocity skyline logo are trademarks and/or service marks of Travelocity.com L.P., and Sabre is a trademark of an affiliate of Sabre Inc.



**THE HAWAIIAN
INSURANCE & GUARANTY
COMPANY, LIMITED**

Contact your insurance agent
for your home and
auto needs.

*We'll be there
when you need us most!*

**GET THE DINGO
TO HELP YOU**

Incredible maneuverability, amazing versatility, impressive hydraulic power...just a few words to describe how the TORO DINGO Compact Utility Loader can help you Work Smarter, Not Harder!! With over 15 different attachments such as the backhoe, cement bowl, bucket, auger, leveler, and cultivator, just to name a few!!



**RENT ME
TODAY**

TORO

Count on it.



**CALL
1-888-832-9711
TODAY for your
nearest Dealer or
request a free
brochure about the
Toro Dingo.**

TACKLE YOUR HOLIDAY SHOPPING LIST!



**Score a FREE*
NAPA Football!**

*with any \$40.00 purchase.

While supplies last at participating NAPA
AUTO PARTS Stores and NAPA AutoCare
Centers in Hawaii. Good thru 12/31/02.



Your Choice!

4999

**Racing Seat Covers
w/EL Lighted Piping**

Choose red, purple, blue or
yellow. #730-6346, 47, 48, 49
Good thru 12/31/02



999

Turtle Wax Holiday Gift Pack

Includes 5 popular Turtle Wax car-care
products. #T2002XG Good thru 12/31/02.

NAPA AUTO PARTS

Get up to
1% off*
our already low auto loans!



We offer 1/4 of 1% off for the following:

- Applying online at www.phfcu.com
- Applying for a pre-approved Auto Loan
- Automatic loan payment
- Direct deposit of your entire paycheck

Call a loan officer at (808) 423-1331
Ext. 271 for more information today!



www.phfcu.com.

Apply today!

*Other terms and conditions apply. 1/4 of 1%
Auto loan preapproval is for auto loans only.

The all-new Saturn ION

0% APR with 36 monthly payments



College grads can receive a \$750 allowance on any new 2002 or 2003 Saturn model.

Standard ION 2 features include: 2.2-liter, DOHC, 140-horsepower engine
Power door locks Air conditioning Stereo with CD player

Monthly payment is \$27.78 for every \$1,000 financed. Length of contract is 38 months. Some customers will not qualify. Take delivery by 1/2/03. See retailer for restrictions. ION quad coupe available in 2003. Eligible college graduates must either (1) be within six months of graduation or (2) have graduated within the past two years from a two-year or four-year college or a post-graduate program. Graduate students are eligible during their entire enrollment period. Certificate program students are not eligible. Must take delivery between October 4, 2002 and September 30, 2003 and apply to GMAC to finance purchase or lease. GMAC must approve. Minimum amount finance required. Monthly payment deferral not available with GMAC SmartLease or SmartBuy. Program may not be combined with GM Employee/Supplier program, MVP units or units purchased at auction. See your retailer for other restrictions. ©2002 Saturn Corporation. For more information go to saturn.com

Saturn 2003 L300*

0% APR with 60 monthly payments



\$0 down payment,
0 monthly payments for 90 days
for qualified buyers on all new
2003 L-Series models.

Standard L300 features include: 3.0-liter, DOHC, V6 engine
Head Curtain Side Air Bags* • 6-speaker CD stereo

*Monthly payment is \$18.87 for every \$1,000 financed, Length of contract is 62 months. Some customers will not qualify. Take delivery by 1/2/03. See retailer for restrictions. L300 shown with optional equipment. Monthly payment is \$27.78 for every \$1,000 financed. Length of contract is 38 months. Some customers will not qualify. Take delivery by 1/2/03. See retailer for restrictions. ION-2 is shown with optional equipment. ION quad coupe available in 2003. Head Curtain Side Air Bags are designed to help reduce the risk of head and neck injuries to front and rear seat occupants on the near side of certain side-impact collisions. Always use safety belts and proper child restraints, even with air bags. ©2002 Saturn Corporation. For more information go to saturn.com.



SATURN of HONOLULU

It's Different in a Saturn.

Tax, license and doc fee are extra. Primary lending source must approve. \$195 doc fee

808-836-7007
www.SaturnHonolulu.com
near the airport
2901 North Nimitz Highway
Honolulu, Hawaii 96819

LET'S GO WARRIORS!

**WIN BIG!
LAS VEGAS!**

4 WEEKLY NON-STOP!
Winter Packages Now Available! Call Today!



GROUP DEPARTMENT

*Calling all class & family
reunion organizers!*

Tom Wakita, Sr.
Dir. of Group Sales
441-2474

*Call Tom or Leah for
more details about
our group specials!*



Leah Crail
Group Coordinator
441-2457

"Talk about hitting the Jackpot! Non-Stop Travel was most reliable. Our stay at the Golden Nugget was fabulous and the topping on the cake was the hosted cocktail party. The breakfasts, lunches and dinners at The Buffet were superb. Truly, Golden Nugget is a AAA-Four Diamond Hotel. Mahalo Nui Loa. You can bet we'll be back!"

*- Bobbie Hanoa, Muriel Masumura & Pearl Mori
Kaimuki High School Class of '60*

**Call for details and check out our
web site for **RED HOT SPECIALS** at
www.nonstophawaii.com**

HAWAII MEAL DEALS!

GOLDEN NUGGET
New & Improved!
Mahalo Meal Deal!

PALACE STATION
A Hawaii Favorite!

IMPERIAL PALACE
Center Strip! Great Location!



CHOOSE FROM 32 HOTELS!

- New York New York
- MGM Grand
- Circus Circus
- Four Queens
- Rio Suite & More!



Serving You Since 1985 - Mahalo!
1350 S. King St., Suite 101 • Honolulu, HI 96814
593-0700 OR 1-800-551-1226
Visit us at www.nonstophawaii.com

**SUNDAYS - Call
9am - 2pm**

ConAgra Foods Hawai'i Bowl Conferences



In the world of intercollegiate sports, many considered the formation of **Conference USA** a bold move. Its formation occurred during a significant period of major conference realignment and restructuring of the NCAA. C-USA established a strong foundation while quickly earning a reputation of successfully competing at the highest levels of intercollegiate athletics. Capitalizing on the strengths of its 15 distinguished and diverse universities, Conference USA has quickly emerged as one of the nation's top conferences.

The conference unveiled its name, logo and commissioner on April 24, 1995, in Chicago. Mike Slive was named the first commissioner of Conference USA. Eleven of the institutions began athletic participation in 1995, while Houston joined competition in the fall of 1996. The league's headquarters were established in Chicago. Britton Banowsky succeeded Slive as the second commissioner of Conference USA on October 28, 2002.

Conference USA added East Carolina (September, 1996) and the United States Military Academy (March, 1997) as football members. ECU began league competition in 1997; Army in 1998 and UAB began football play in 1999. The league added TCU and ECU (1999) for all sports and they began competition in 2001. South Florida starts C-USA football in 2003.

Conference USA sponsors 19 sports – baseball, basketball, cross country, football, golf, soccer, tennis, and track and field (indoor and outdoor) for men and basketball, cross country, golf, soccer, softball, swimming, tennis, track and field (indoor and outdoor), and volleyball for women. The league's championship competition is enhanced by NCAA automatic bids in volleyball, men's and women's basketball, men's and women's soccer, men's and women's tennis and baseball.

Conference sports compete in a single division, except for men's basketball, which currently competes in two. Charlotte, Cincinnati, DePaul, East Carolina, Louisville, Marquette and Saint Louis comprise the American Division, while Houston, Memphis, South Florida, Southern Miss, TCU, Tulane and UAB make up the National Division.



The **Western Athletic Conference** features some of the most exciting competition at some of the most diverse campuses in the nation. With 10 members in Texas, Oklahoma, Louisiana, Idaho, Nevada, California and Hawai'i, the WAC continues to build upon its most recent success.

The WAC provides its student-athletes the chance to travel to scenic destinations and gain exposure in some of the nation's largest and most accessible media markets. In addition, the academic reputation of many of the WAC schools is unparalleled, with some of the nation's most respected institutions of higher learning among the WAC ranks.

This season marks the 40th anniversary of the league making the WAC the sixth oldest among the nation's 11 Division I-A conferences. Its history traces back to 1962, when the original six-team league was created. The concept of a Western Athletic Conference began in 1958 when Brigham Young's Edwin Kimball, Leo Harris of Oregon and Roy S. Keen of Oregon State met during the NCAA Convention in New York to discuss the "ideal conference" because problems existed in their alignments.

The WAC began operation with the 1962-63 academic year, and Paul Brechler was the WAC Commissioner from 1962-1968. Wiles Hallock was the commissioner from 1968-1971, Stan Bates from 1971-80, Dr. Joe Kearney from 1980-94 and Karl Benson from 1994 to the present.

Presently the WAC crowns team and individual champions in 18 sports – eight men's and 10 women's. For the men, there are championships in baseball, basketball, cross country, football, golf, tennis, indoor track and field and outdoor track and field. Championships for women are held in basketball, cross country, golf, soccer, softball, swimming and diving, tennis, indoor track and field, outdoor track and field and volleyball.



University of Hawai'i

The University of Hawai'i is unique among institutions of higher education in more ways than one. It is one of few university systems to offer a comprehensive range of opportunities, from the open-door vocational, technical and liberal arts programs of seven community college campuses, to bachelor's degree programs at three campuses with perhaps the most diverse student bodies in the nation, to graduate studies and post-doctoral pursuits that afford scholars the chance to work along side some of the best instructors and researchers in the nation.

UH is truly a statewide system with 10 campuses on four islands, educational centers on two more and distance education provided via traveling faculty and information technologies that extend educational opportunities to virtually any resident in Hawai'i.

The University of Hawai'i at Manoa is the only Carnegie Research Intensive institution in the state and one of only approximately 60 in the U.S. It offers comprehensive undergraduate programs with special opportunities for honors students, a wide range of graduate and professional degrees, and post-doctoral opportunities in advanced research as submersibles.

UH Hilo offers quality undergraduate liberal arts and professional programs and selected master's degrees with an emphasis on applied research that take advantage of the island as one of the world's greatest natural laboratories.

The intimate UH West O'ahu offers baccalaureate



The University of Hawai'i's Architecture building.

degrees in professional and academic programs to students who have already completed their first two years of college work and accommodates the work schedules of non-traditional college students.

The seven degree-granting community colleges are an essential part of the system and leaders in educational innovation and responsiveness to industry needs. In addition to strong liberal arts programs that prepare students to transfer to four-year campuses, each community college has a special expertise.

The University's Asia-Pacific focus is evident throughout the curriculum — in fields related to health, business, tourism, the arts, languages and cultural studies. Ten programs in the School of Hawaiian Asian and Pacific Studies lend expertise on historical, political, economic, and cultural questions related to our Pacific and Asian neighbors.

The University of Hawai'i is a serious player on the world research stage. UH builds strong research programs based on the islands' natural assets of clear skies, deep waters, volcanic activity, diverse cultures and proximity to colleagues and facilities in both the U.S. and Asia. UH research activities reach literally to the ends of the earth, with faculty mapping the ocean bottom beneath the northern ice cap and identifying strange new bacteria in Antarctica.

The University of Hawai'i doesn't believe in limits — only opportunities.



The tree-lined splendor of UH's McCarthy Mall.

FREE DISH!

w/12-month commitment

**The lowest possible
upfront cost for
great entertainment.**



RadioShack

You've got questions. We've got answers.®

1-ROOM SYSTEM INSTALLED

\$0⁰⁰*



Plans start as low as \$22.99

per month for America's Top 50,

America's lowest all-digital price

Add a Second Room!

\$0.00 #101-0245 Single Dish 301 System

Plus \$49.99 Paid to DISH over the phone for 2nd receiver

Equals \$49.99 Total customer out of pocket in-store

Less \$20.00 RadioShack mail-in rebate†

Totals \$29.99 Net customer cost

*One-Room System Installed FREE \$0.00-#101-0245. Standard Professional Installation only. Offer valid for new, first-time residential customers with a valid major credit card. Requires commitment to 12 consecutive months of minimum America's Top 50 or higher programming between 8/01/02 and 1/12/03. Customers who disconnect or downgrade qualifying programming before the end of the 12-month period will be charged a \$240 Cancellation Fee. †Valid for new, first-time residential customers through 1/12/03.

RCA Floor Fixture
Expires 1/12/03
6162DH3BS



Tulane University

Located on historic St. Charles Avenue, Tulane University offers students a classic campus setting in the heart of one of New Orleans' most famous neighborhoods. Ancient oaks and blooming azaleas frame the century-old buildings and newly constructed halls that define this beautiful 110-acre campus.

With an enrollment of more than 12,000 students, Tulane retains the charm of a small school while offering all the academic and extracurricular opportunities of a large university.

Tulane attracts some of the most academically qualified students from throughout the country and world to experience the unique educational opportunities offered by its 11 schools and colleges.

Tulane students regularly receive the highest academic honors including Rhodes, Marshall, Goldwater, Watson, Turman and Beinecke scholarships. The average SAT score for Tulane's 2000-2001 freshman class was 1294, which is 278 points above the national average.

Tulane University was founded in 1834 as the Medical College of Louisiana. The school's mission was to find a cure for the Yellow Fever epidemic that gripped mid-19th century New Orleans. Its first classes were comprised of 11 students and seven faculty members who met in a rented hall. Despite its humble origins, the faculty's dedication and advances soon gained wide recognition.

Today, Tulane is one of only four universities in the South to be accepted into the prestigious Association of American Universities, a group of 58 major American and Canadian research universities. Tulane offers undergraduate, graduate



Tulane students study among blooming azaleas.

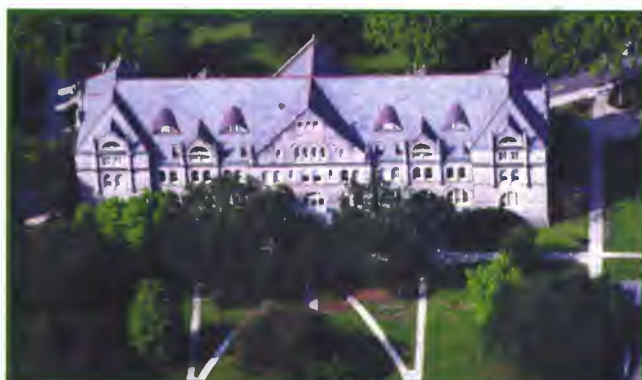
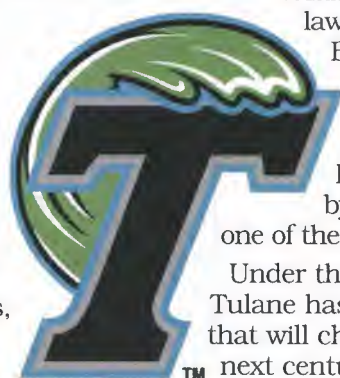
and professional degrees in law, medicine, architecture, business, engineering, social work, public health and tropical medicine and the liberal arts and sciences.

Tulane's schools and departments, led by the law school and the A.B. Freeman School of Business, are consistently ranked among the top in the nation according to various national publications including *U.S. News and World Report*. In 2002, Tulane University was named by Kaplan/*Newsweek's* college guide as one of the nine "Hot Schools" in the nation.

Under the leadership of President Scott Cowen, Tulane has initiated an ambitious strategic plan that will chart the University's course into the next century. Dr. Cowen's enthusiasm and energy has inspired the entire Tulane community to embark upon what he calls "A Renaissance of Thought and Action."

Tulane's activities pump more than \$1.58 billion into the New Orleans economy each year and more than 24,000 workers are associated, either directly or indirectly, with the university. Tulane is the largest private employer in Orleans Parish and one of the top private employers in Louisiana.

In addition to its economic impact, Tulane faculty, staff and students perform almost 500,000 hours of service throughout the New Orleans community each year. This service comes in the form of literacy programs, after-school tutoring and mentoring, neighborhood revitalization efforts, social services delivery, economic development programs and other initiatives that shape the life of the New Orleans community and carry forth the mission of Tulane.



Tulane University's Gibson Hall.

The Hail Mary pass didn't work.

At least your marker
has a **Grip**



PERMANENT

Grip Marker

www.bicworld.com

It's Your BIC[®]
Write What You Feel[™]



TLC
LIFEUNSCRIPTED



FULL METAL C H A L L E N G E

HOSTED BY HENRY ROLLINS AND CATHY ROGERS


30 DAYS TO BUILD. 30 SECONDS TO DESTROY.

From the creators of *Junkyard Wars* comes the ultimate global road rage competition.

SEMI-FINALS
SUNDAY 10PM^{E/P}

CHAMPIONSHIP
SUNDAY, JAN. 12TH 10PM^{E/P}

To check out the tournament standings, go to discovery.com and click on TLC

Sponsored in part by:  We're with you



NATIONAL SECURITY AGENCY

FOR YOUR
EYES ONLY

Join us for perhaps the most
important reason of all.

Freedom.

In its most simple terms, it's about contributing to the nation's safety and security. And while we can't say exactly what you'll do when you join us, we can say that you will be with the organization that carries out a number of the country's most important intelligence activities – monitoring, gathering and decoding foreign

communications (signals) from around the world... Information Assurance – protecting our country's own security and communications from exploitation...and transforming data into key intelligence for use by the highest levels of U.S. government decision-makers.

We are now hiring in these areas:

- Computer Science
- Computer Engineering
- Electrical Engineering
- Foreign Languages
- Mathematics
- Intelligence Analysis



For complete details go to: www.nsa.gov

Ready for the challenge? Contact: National Security Agency, Suite 6779, (LFQ), 9800 Savage Road, Ft. George G. Meade, MD 20755-6779. Reasonable accommodation provided to applicants with disabilities during the application and hiring process where appropriate. Positions open to U.S. citizens only. NSA is an equal opportunity employer and abides by applicable employment laws and regulations.

Right on the corner, Right on the price.



Hyundai Advantage™
AMERICA'S BEST WARRANTY*

10 Year 100,000 Mile Powertrain Protection	5 Year 60,000 Mile Bumper-to-Bumper Coverage	5 Year Unlimited Miles 24-hr Roadside Assistance
---	---	---

Aloha HYUNDAI 2841 N. Nimitz Hwy
833-9000
 Shop online at www.aloha-hyundai.com



KIA

LONG HAUL
 WARRANTY PROGRAM

10 | 100,000 MILE WARRANTY PROGRAM

Aloha KIA 98-425 Kam Highway • Pearl City
486-6KIA
 Shop online at www.aloha-kia.com



**PACIFIC RIM CYCLE
 SUPERSTORE**

3075 N. Nimitz Hwy
838-CYCLE
 (2 9 2 5)
www.pacificrimcycle.com

ESPN Regional Television Worldwide Leader in Collegiate Sports

Based in Charlotte, North Carolina, ESPN Regional Television (ERT) produces more than 2,000 hours of sports programming each year for a variety of outlets including ESPN, ESPN2, ABC, ESPN FullCourt, ESPN Game Plan, TNN, Madison Square Garden, Fox Sports Net, Comcast Sports and Action Sports Network.

Known by its on-air identification as ESPN Plus, ERT is the nation's largest producer and syndicator of collegiate sports. ESPN Regional owns exclusive syndication rights for Big Ten, Big East, Conference USA, Mid-American and Mountain West football and basketball as well as men's basketball for the Big Twelve.

The ConAgra Foods Hawai'i Bowl is managed by ERT's Events and University Projects division. ERT also manages multi-media rights for seven collegiate athletics departments: Iowa State, Kansas, Oregon, South Florida, TCU, UAB, and UNLV.



Summary of Key Personnel

Chuck Gerber
Executive Vice President and
General Manager

Pete Derzis
Senior Vice President

G.W. Mix
Director of Events

Jim Donovan
Executive Director

Angie Wellman
Manager of Events

Dave Matlin
Director of Operations

Amy Fleming
Event Supervisor



Even Santa will get into the act at Aloha Stadium on Christmas Day



2002-03 Events

ConAgra Foods Hawai'i Bowl

Sega Sports Las Vegas Bowl

ConAgra Foods Skins Game

ConAgra Foods
Champions Skins Game

ConAgra Foods
LPGA Skins Game

Par Three Shootout

Las Vegas Showdown

Pepsi Classic

Touchstone Energy
Big XII All-College Classic

ACC Big Ten Challenge

Feist Kansas City Shootout

Dodge Shootout

Pape Group Portland Jam





ConAgra Foods Hawai'i Bowl Matchup Hawai'i vs. Tulane

Hawai'i Warriors

UH completed its regular season with a 10-3 record and finished second in the Western Athletic Conference with a 7-1 mark.

The Warriors posted a 9-3 record in 2001 and did not receive an invitation to a bowl game, but that has changed this season with the newly created ConAgra Foods Hawai'i Bowl. UH is making its fourth bowl appearance and is 2-1 all-time, 1-0 under head coach June Jones.

UH earned its first national ranking in a decade this year, spending two weeks in the ESPN Coaches Poll, ranking as high as 24th.

Hawai'i boasts the nation's most prolific passing offense in the country, led by sophomore Timmy Chang who has thrown for 4,350 yards and 25 touchdowns this year.

The offensive line has proven the steadiest part of the team all year and is anchored by guard Vince Manuwai, UH's first, first-team All-American since Jason Elam in 1992.

UH comes in with some injuries. Two key starters, Hyrum Peters the leader of the secondary and Lui Fuata, the team's center, missed the Warriors' regular season finale versus San Diego State, but look to return against Tulane.

Tulane Green Wave

Under the direction of fourth-year head coach Chris Scelfo, Tulane compiled a 7-5 record in 2002, including a 4-4 mark in Conference USA, to become bowl-eligible for the second time under Scelfo and for the fourth time in the last six years.

The Green Wave defense made a remarkable turnaround in 2002. Ranked 113th in the nation in scoring defense a year ago, Tulane ranks 33rd this season as the senior-laden group has been opportunistic — recovering 19 fumbles and picking off 21 passes — to lead the country in turnovers gained. That statistic, combined with the Wave offense's ability to secure the ball, led to a number three ranking in turnover margin this year.

The Green Wave's all-senior starting defensive line has also contributed mightily to the team's defensive fortunes, combining for 57 tackles for loss and 20.5 quarterback sacks.

Mewelde Moore is the man to watch on the Tulane offense as the junior is the school's all-time leader in both rushing and all-purpose yards. He posted his second straight 1,000-yard season in 2002 and led the team in catches. Quarterback J.P. Losman complements Moore's running as the triggerman for the Green Wave's passing attack.

UH 2002 Record (10-3)

DATE	OPPONENT	RESULT
8/31	Eastern Illinois	61-36 W
9/6	at BYU	32-35 L
9/21	at UTEP	31-6 W
9/28	SMU	42-10 W
10/5	at Boise State	31-58 L
10/12	Nevada	59-34 W
10/19	Tulsa	37-14 W
10/25	at Fresno State	31-21 W
11/2	San Jose State	40-31 W
11/16	at Rice	33-28 W
11/23	Cincinnati	20-19 W
11/30	Alabama	16-21 L
12/7	San Diego State	41-40 W

Tulane 2002 Record (7-5)

DATE	OPPONENT	RESULT
8/31	at Southern	37-19 W
9/7	at Houston	34-13 W
9/14	at East Carolina	20-24 L
9/21	at Memphis	10-38 L
9/28	Texas	0-49 L
10/5	at Louisiana-Monroe	52-9 W
10/12	Cincinnati	35-17 W
10/19	UAB	35-14 W
10/26	Navy	51-30 W
11/9	at Texas Christian	10-17 L
11/16	Army	10-14 L
11/23	Southern Mississippi	31-10 W

Bob didn't have AESmentor
when he went to school.



Don't be like Bob.

STUDENTS: Don't end up in a dead-end career. Get on the right track to a successful future with AESmentor.org.

AESmentor helps you find the best career path for who you are... and where you want to go in life. It also helps you decide on the college that best meets your needs and offers tips to help you get accepted. You can even apply for admission and financial aid online. Take virtual campus tours, access the world's largest scholarship database of free money and communicate via free email accounts. With powerful career and college planning tools, **AESmentor** is your one-stop resource. **So don't be like Bob...** set your goals now and **AESmentor** will help you achieve them.

Visit www.AESmentor.org today or call our award-winning eCommunications Center toll-free at **877.603.6010**.



Sponsored by American Education Services

Our "shareholders" are your students.

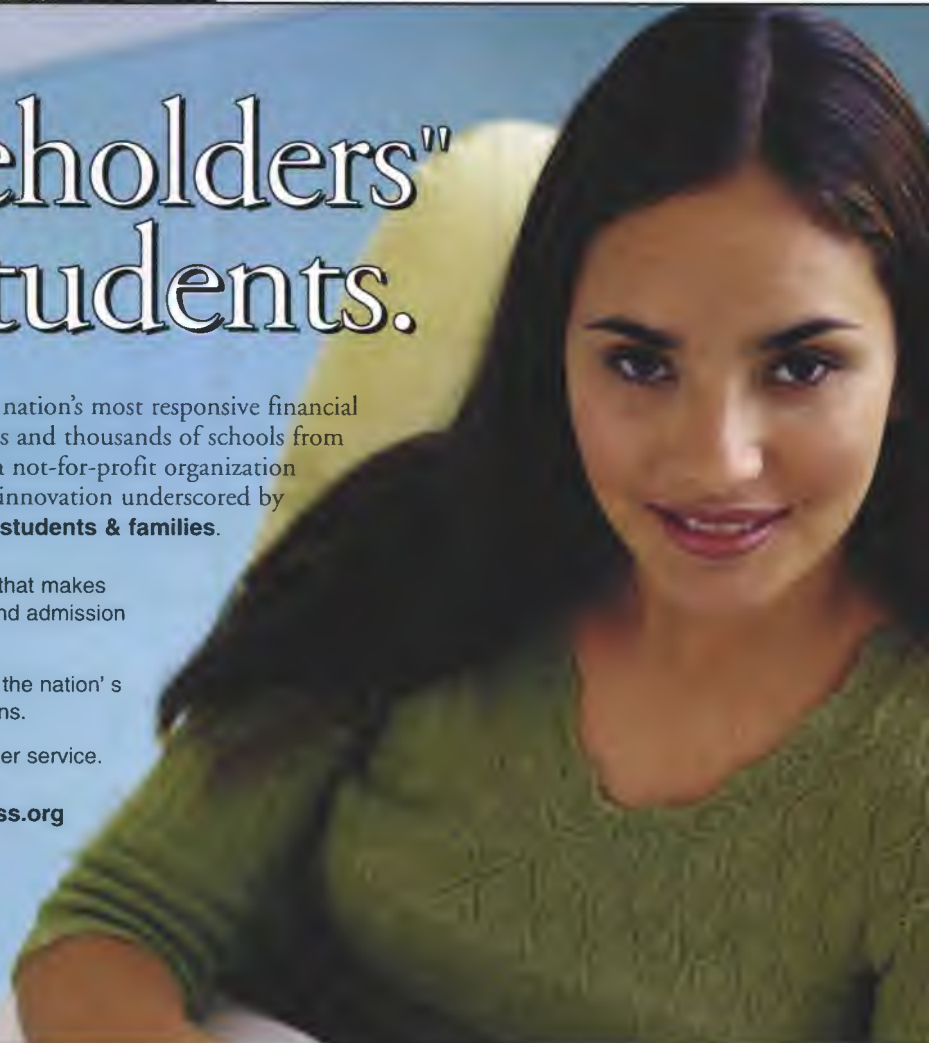
American Education Services (AES) is the nation's most responsive financial aid services organization serving millions of students and thousands of schools from coast to coast... but with a refreshing twist. AES is a not-for-profit organization with nearly 40 years of commitment, integrity and innovation underscored by one very important fact: **AES pays "dividends" to students & families.**

- **By developing** innovative Web-based technology that makes planning for school and applying for financial aid and admission as easy as "point and click."
- **By partnering** with the lending community to offer the nation's most affordable student loans, including parent loans.
- **By offering** the industry's most responsive customer service.

To learn more, call **800.699.2908** or visit aesSuccess.org today.



For Success.



DO IT.

FEEL IT.



SUPERCHARGED. That's Porter-Cable. Experience the force of a tool that simply won't take "no" for an answer. Feel the rush of conquering the job. And the thrill of moving on to the next one. Power up a Porter-Cable, and enjoy the ride.

FOR THE DEALER NEAREST YOU: 1-800-4US-TOOL [U.S.] ♦ 1-800-463-3582 [CANADA] ♦ PORTER-CABLE.COM

**PORTER
CABLE**
REDEFINING PERFORMANCE

GET A TASTE OF HAWAII



ISLAND GETAWAYS!

One phone call, gives you the convenience to build your own affordable travel package to the neighbor islands. Choose any combination of air, room and car packages.

SELECTION:

We offer over 100 hotel and condominium properties.

VALUE:

We also offer discounted rates to kama'ainas and military personnel.

CONVENIENCE:

Roberts makes going inter-island fast and easy with just one phone call.

VARIETY:

Roberts Overnighter Gift Certificates are also available.

SECURITY:

We are bonded for \$250,000 on the purchase value of all tickets.



ROBERTS OVERNIGHTERS

Your Inter-Island Travel Specialist

For reservations, see your travel agent or call

808-523-9323 Oahu
1-800-899-9323 Neighbor Islands

e-mail: overnighters@robertshawaii.com
www.robertsovernighters.com

E-Tickets or Oahu Airport Ticket Pickup Available

Aloha
AIRLINES

DOLLAR
RENT A CAR

Hawaii State Drivers License or Military I.D. required. Hotel subject to availability.

TA-241



UH Coaching Staff



In four seasons at the helm of the Hawai'i program, June Jones has produced three nine-win seasons, four All-Americans, 42 all-conference performers, and five NFL draft picks.

According to June Jones, the formula is simple. It all boils down to recruiting.

"Good players make good coaches," Jones said. "We have been able to recruit successfully since I've been here and that plays a big part of our success."

Jones and his staff have also had success in recruiting the local talent, a missing element in years past.

"Winning does that," Jones said. "I think we have eight or nine guys with professional contracts and that makes a statement to the local kids. We've also had players go early in the NFL Draft. In addition, we're graduating our kids and the overall grade point averages are up. It's also a very positive thing to be able to stay at home and play in front of your families."

Jones, who took the reins of a dwindling football program in December 1998, took one season to turn it all around. In 1999, Jones and the Warriors enjoyed a 9-4 season, the biggest turnaround in NCAA history.

In that same season, the Warriors won a share of the Western Athletic Conference (WAC) championship and were invited to the Jeep O'ahu Bowl where they defeated Oregon State, 23-17. It was the program's first bowl game since 1992. For his accomplishments, Jones was named WAC Coach of the Year and National Coach of the Year by three different publications.

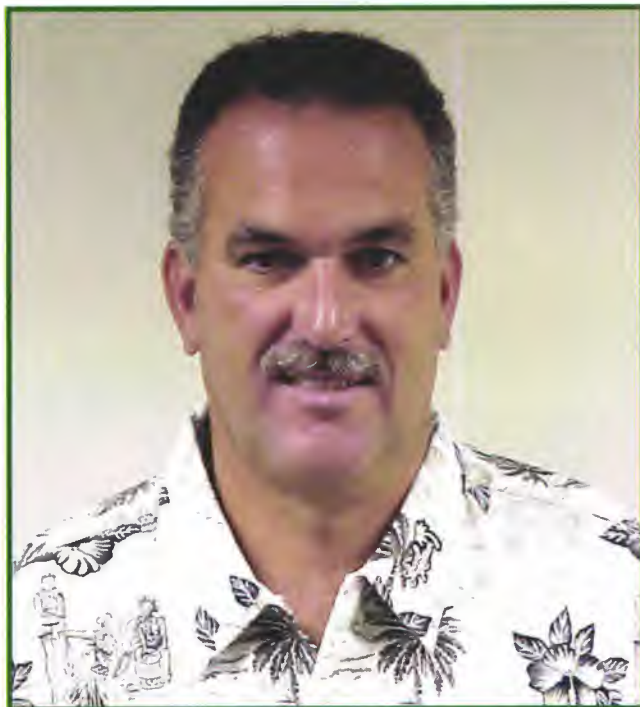
According to Jones, the formula for success is camaraderie.

"I try to get the kids to play together," Jones said. "That's the most important thing. Teaching them to put the other guy first and creating that type of attitude, that's the difference in winning, to be quite honest."

On Feb 22, 2001, Jones was involved in a car accident that nearly claimed his life. Jones missed the entire spring session due to the accident. However, Jones' tireless effort to recover allowed him to return to the gridiron just in time for fall camp.

"I really can't explain why I'm still here," Jones said. "I guess it just wasn't my time. I really had to focus to get back to this point. I had to change my whole way of thinking."

The recovery process for Jones may be a lot easier today, but it is surely not over.



June Jones Head Coach

"I still have some pain in certain areas," Jones said. "I still can't do a lot of things I used to be able to. My golf swing is different, I can't hit the ball like I used to, but I can still play so I'm grateful for that."

Under Jones' tutelage, the Warriors have broken 140 school records and three NCAA records. In 2001, receiver Chad Owens led the nation in kick-off return average (33.6 yards) and quarterback Timmy Chang led the nation in total offense (349.7 yards) before bowing out to a wrist injury.

In addition, in the past four years, Jones' run-and-shoot offense has led the WAC and been ranked in the top five nationally each season.

For Jones, the success doesn't end on the football field. A total of 30 players have graduated since his arrival in December 1998 and the grade point average of the team has increased from 2.46 when he arrived to 2.50 in May 2002.

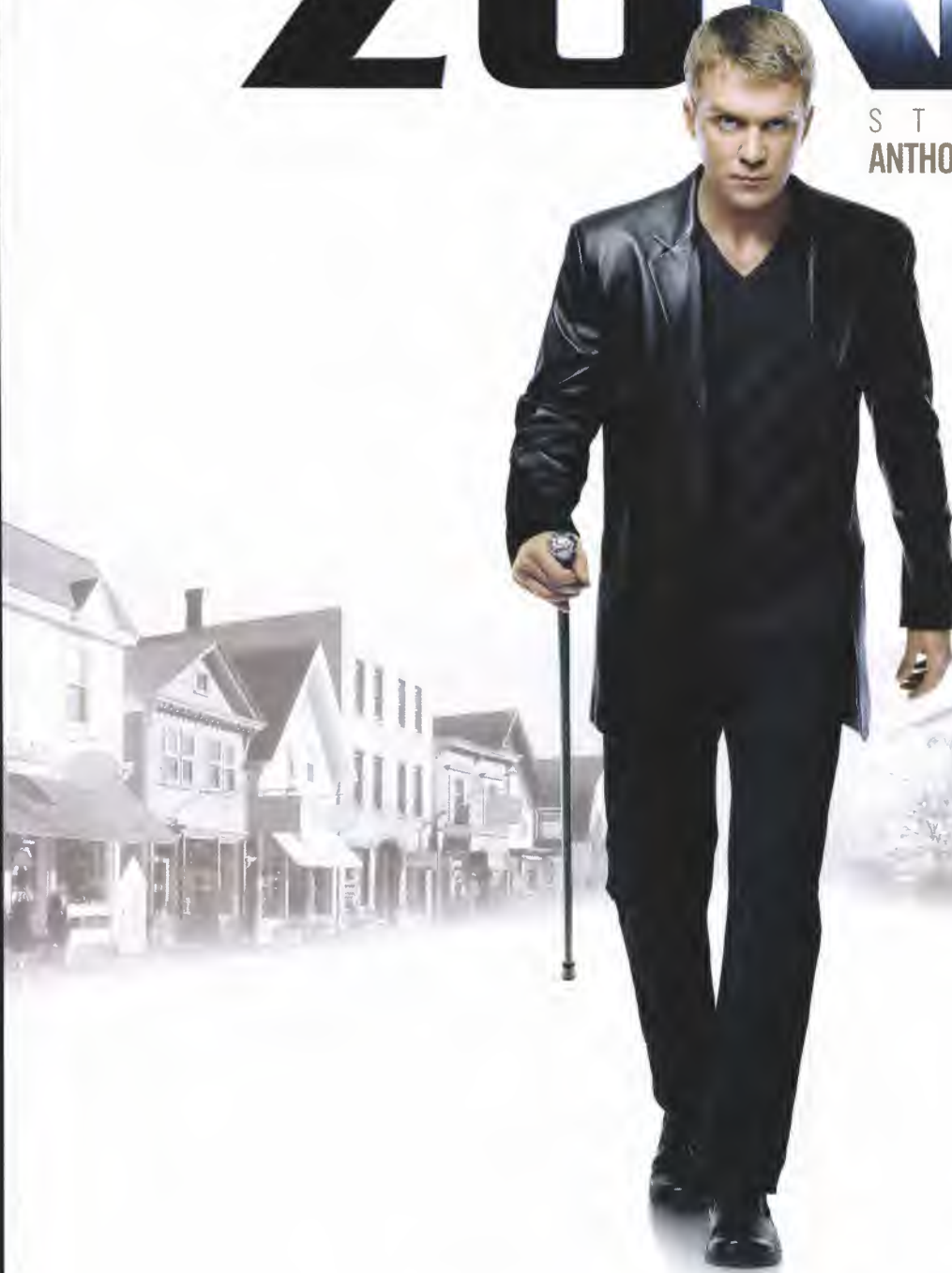
"Academics is why we are all here in the first place," Jones said. "We monitor these guys in study hall and make sure they're doing what they need to be doing to stay on course and graduate."

UH Coaching Staff continues next page

THE HIT SERIES IS BACK

THE DEAD ZONE

STARRING
ANTHONY MICHAEL HALL



THE NEW SEASON PREMIERES
SUNDAY, JAN 5TH AT 10PM/9C

USA
NETWORK[®]

usanetwork.com

©2003 USA Cable. All rights reserved.



UH Coaching Staff



George Lumpkin

Associate Head
Coach/Linebackers

George Lumpkin has been part of the University of Hawai'i football for three decades. The program has gone through a long line of coaches, players, logos, and uniforms over the years. Lumpkin has been the one constant amidst its changing landscape.

Lumpkin first came to Hawai'i in 1970 after transferring from Los Angeles Harbor Junior College, where he was a standout running back and defensive back. He played two seasons at defensive back for UH and made an immediate impact, setting new school records for most interceptions in a season (6) and career (8).

After his playing career was over, Lumpkin jumped right into coaching, serving as a graduate assistant under Dave Holmes in 1972. For the next 24 years, he worked with four more head coaches at UH, and became involved with every aspect of the defense, coaching the defensive line,

linebackers and secondary. He served as defensive coordinator for one season and was the assistant head coach to Bob Wagner for four seasons, a position he holds today under Jones.

Lumpkin and his wife, Valorie, have three children – Monique, Shawn and Shalei.



Kevin Lempa

Defensive Coordinator

Scouting his opponents, formulating a game plan, teaching proper techniques and making the correct calls come game time are all vital in Lempa's role as defensive coordinator. One aspect he has less concern about this year is motivation.

With an impressive resume, Lempa arrived in Hawai'i in 2000, where he reunited with Jones and began implementing a defense that would succeed with Jones' offensive attack.

"It's important, as aggressively as we play on offense,

Mopeds Direct



Hawaii's Oldest Moped Shop

RIDE WITH
A WINNER

Buy • Sell • Trade

Prices Include Tax
& Registration



Hussar
\$1,795

Mako
\$1,495

Abruzzi
\$1,295

Big Boss
\$449

* Mention This Ad For FREE Lock & Key

Same location since: 1991 750 Kapahulu Ave

92-MOPED (926-6733)

WWW.MopedsDirect.net



UH Coaching Staff



we have that same mentality on defense," Lempa said. "Our offense is so explosive we can't afford to keep them off the field. Our total objective is to get the ball back to them. And all our players realize this, as long we can hold our opponents to one less point than we score, which we did a couple of times. You'd love to pitch some shutouts, but it's hard in today's football."

Ironically, Lempa's football career is not deeply rooted in defense. His playing days were as a wide receiver at Southern Connecticut State and his first two college coaching stints – two seasons at his alma mater and one season at Wesleyan – involved working with the good hands people. Still, Lempa's offensive background shapes his tactical approach today.

Lempa and his wife, Sally, have two children – Tara and Christopher.

Dan Morrison Quarterbacks

For the past four years, Dan Morrison has nurtured UH's quarterbacks, not only preparing his players for the technical aspects of the game, but also providing a calming



presence to help guide them through their collegiate journey.

Morrison's ability to reach his players grew out of his years as a high school coach when he forged numerous relationships and built hundreds of players into young men. Before arriving on the Manoa campus, he spent nearly his entire coaching career on the high school level. For more than 20 years, Morrison found success wherever he went.

Morrison's keen knowledge of the aerial game and his ability to relate to players quickly landed him a spot on Jones' staff at UH. He has since found his four-plus years at Manoa particularly rewarding.

Morrison resides in Pearl City with his wife Karen, and stepdaughter Nikki.

Mike Cavanaugh Offensive Line

With more than 15 years of coaching experience, includ-
UH Coaching Staff continues on page 31

Firestone

AMERICA'S HOME FOR TIRES & SERVICE

Hawaii's #1 Choice For Tire and Automotive Needs

OIL CHANGE SPECIAL

\$9.99

With this coupon only thru 12/31/02

- Install new oil filter
- Install up to 5 qts. 10W-30 or 5W-30 Kendall® oil
- Lubricate chassis (if applicable)

Most vehicles. Plus \$2.00 oil disposal fee. Not to be combined with any other offer.

TIRE SPECIAL

15% OFF

TAKE 15% OFF ANY FIRESTONE OR BRIDGESTONE TIRE PURCHASE

Not to be combined with any other offers. With this coupon only thru 12/31/02.

COMPLETE VEHICLE INSPECTION

\$14.99

With this coupon only thru 12/31/02

- In-depth visual analysis of major systems
- Tires ■ Suspension ■ Lights ■ Brakes
- Fluid Levels ■ Wipers ■ More

Most vehicles. Not to be combined with any other offer.

BASIC ALIGNMENT

\$39.99

With this coupon only thru 12/31/02

- Inspect your vehicle's steering/suspension
- Align vehicle to manufacturer's specifications
- Road test vehicle

Additional charge for 4-wheel, parts & shims extra, if needed. Most vehicles. Not to be combined with any other offer.

NEIGHBOR ISLANDS

HILO

26 Kekela St. 935-8571

KONA

75-5629A Kuakini Hwy. (RD 2621) 329-2488

KAHULUI

111 Hana Hwy. (RD 1570) 877-2002

OAHU AREA LOCATIONS

HONOLULU

1414 Dillingham Bl. (RD 299) 847-4251

KAILUA

201 Hamakua Dr., Bldg. B (RD 302) 263-2009

KANEHOE

45-934 Kamehameha Hwy. (RD 2631) 247-7422

OAHU AREA LOCATIONS

PEARL KAI

98-141 Kamehameha Hwy. (RD 3189) 486-1582

WAIPAHU

94-267 Farrington Hwy. (RD 301) 677-9141

FOR OUR MILITARY CUSTOMERS

HICKAM AFB

Bldg. 2073 (RD 2618) 423-8755

FORT SHAFTER FLATS

Bldg. 1528 (RD 2619) 845-9351

KANEHOE BAY MCB

Bldg. 1667 254-2258

SCHOFIELD BARRACKS

Bldg. 80 (RD 2801) 624-0204

Taste the Flavors of Aloha

with

ALOHA SHOYU

Hawaii's favorite

Aloha Shoyu is a favorite among the locals and visitors alike because of its 56 year commitment to family tradition, local roots, and great flavor.

Since 1946, Hawai'i has been "Pouring on the Aloha" with quality Aloha Shoyu products like Aloha Shoyu Soy Sauce, Aloha Barbecue Sauce, Aloha Teriyaki Sauce, and Aloha Vinegars. Come experience the flavors of Aloha Shoyu!



96-1205 Waihona St., Pearl City, HI 96782
Phone: (808) 456-5929 • Fax: (808) 456-5093
gotshoyu@alohashoyu.com • www.alohashoyu.com



UH Coaching Staff



ing two seasons on the NFL level, Mike Cavanaugh has become renowned, not just for his motivation, but for his uncanny ability to teach the fundamentals and techniques that allow his players to excel.

Since coming to the islands, Cavanaugh has developed a knack for turning out NFL-type offensive linemen.

In his three previous seasons on the Warrior staff, four linemen have taken the step up to the next level.

While Cavanaugh takes pride in his work, he makes sure to check his ego at the door. He's demanding of his players, but he is regarded as an honest, caring teacher who has his players at the forefront. The result is a tight-knit family.

Cavanaugh is married to the former Laurie Gilbride, and they have two sons — Shane and Blair.



Wes Suan Running Backs

Wes Suan handles much of the administrative duties, organizes most of the day-to-day practices, and works extensively with the scouting reports. And despite his dual role as both the running backs coach and

offensive coordinator, he defers much of the credit to head coach June Jones.

Suan coached under NCAA Hall of Fame coach Ad Ruschman for 19 seasons. The Wildcats won three NAIA national titles in 1982, '84, and '86 in his tenure.

During that span, his duties included coaching the running backs and offensive and defensive lines, and he was the offensive coordinator from 1992-98. Upon his becoming the offensive coordinator in 1992, Linfield set a school record for total offense, compiling 5,986 yards.

Suan and his wife, the former Judy Stalker, live in Honolulu with their daughters, McKenzie and Madeline.



Rich Miano Secondary Coach

Rich Miano earned a spot on Dick Tomey's UH squad in 1982 as a walk-on. He gained a full scholarship following his first season and developed into an all-conference standout the next two seasons.

A sixth-round pick in the 1985 draft, Miano went on to play 11 seasons in the National Football League with the New York Jets, Philadelphia Eagles and the Atlanta Falcons.

Upon joining June Jones' staff in his first coaching position in 1999, it was only natural that he was appointed as

walk-on coordinator. For Miano, the experience has been both gratifying and agonizing.

Miano and his fiancée Lori Bennett have a two-year-old son, Richard James Kalanikupa'a Miano III.



Vantz Singletary Defensive Line Coach

Vantz Singletary believes that one must not only be strong physically, but mentally and spiritually as well. He said that two of his biggest strengths are character and integrity, and those two traits assist him with his everyday duties of relating to players, colleagues and the community.

Singletary has learned from the likes of Mike Ditka, Tony Dungy, "Mean Joe" Greene and Wayne Nunnely. Sometimes he needs to look no further than to his uncle Hall of Fame linebacker, Mike Singletary of the Chicago Bears.

Singletary and his wife, the former Shawndra Saulter, live in Honolulu, along with their four daughters — Courtney, LaShea, Briauna and Keona.



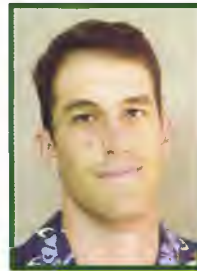
Ron Lee Wide Receivers

Ron Lee began his coaching tenure in Honolulu at Kalani High School before moving on to Kaiser High School, where he led the Cougars to four straight Honolulu District titles and a 1979 Prep Bowl championship. He

then went on to become offensive coordinator for Saint Louis School. Coupled with his brother Cal, head coach of the Crusaders, they built a national power that reigned for more than a decade.

Despite his success on the high school level, nothing has matched the feeling he gets out of coming to practice everyday as a part of the Warrior coaching staff. Lee has proven a natural fit on the UH coaching staff and his island ties have helped turn the tide in local recruiting in recent years.

Lee lives in Honolulu and has one daughter, Tiffany.



Tyson Helton Offensive Assistant

Tyson Helton was elevated to full-time status in 2001 after serving as a graduate assistant for one season.

He works with Mike Cavanaugh and the offense, in addition to his primary role of coaching special teams.

The 25-year-old is able to relate and keep a good rapport with the players because of his age, but he still manages to gain the players' respect on the field.

Helton is married to the former April Dodd.



These dummies pass every test but one ...Sun protection.

FormulaOne™ for your car...

- Heat & Glare Reduction
- Combined Interior Comfort with Neutral Good Looks

FormulaOne™ UVShield for your family...

- 99.9% UV Protection



and both...

- Reduce Deterioration of Seatbelts & Infant Car Seats
- Help Prevent Injury and Damage from Flying Glass
- Not for Dummies



FORMULAONE®
PERFORMANCE AUTOMOTIVE FILM

*Comfort...
Without Compromise!*

1-800-653-1367

www.formulaone.com

The Skin Cancer Foundation has recommended FormulaOne UVShield as a device for UV protection of the skin

FormulaOne and FormulaOne UVShield are trademarks of CPFilms Inc. ©2000 CPFilms Inc.



WEEKEND WARRIOR

WE SUPPORT UNIVERSITY OF HAWAII SPORTS!



MANAGER'S SPECIAL

INOVA X5 TACTICAL L.E.D. FLOODLIGHT

- 3 position tail cap switch allows for constant on, permanent off and intermittent operation for true 1 handed operation of your light
- Stainless steel rings on the front and bottom
- Titanium anodized, aircraft grade aluminum
- Waterproof to 150' • Realcolor™ night lighting
- Lithium batteries included • Lifetime warranty
- Nylon holster included

#X5-AW-TC, 935-984 *While supplies last.



NEW AND IMPROVED!

39.98
VALUED AT 44.99

SPECIAL BUY!

HANDMADE 12" KADOMATSU

- Use for celebrating Shogatsu (New Year's Day)
- Pine branches symbolizes long life and bamboo represents strength
- Placed besides the gate or doorways of home

649-393
*While supplies last.

14.98
VALUED AT 17.99



HANDMADE 17" KADOMATSU

649-410 Valued at 26.99
*While supplies last.

22.98

COAST



TEK TORCH L.E.D. FLASHLIGHTS

- Up to 10 times as bright as conventional flashlights
- Shock proof, water resistant, anodized metal cases
- In Black or Metal finish

① 1 1/2" MICRO TEK TORCH

- Red beam • 1 1/2" long

#TT7520, 906-492

9.99

② 2 1/4" V8 TEK TORCH

- Red, White or Blue beam • 2 1/4" long

#906-502, 586, 599

12.99

③ 3 3/8" V16 PEN LIGHT

- White beam • 3 3/8" long

#LL7526, 910-925

14.99

④ 5 1/4" V12 TURBO TORCH

- Photon tube reflector provides extra-wide and focused beams at the same time

- White or Blue beam • Belt-clip holster included

• 5 1/4" long #906-696, 706

16.99

⑤ 5 1/2" V2 TRIPLEX TEK TORCH

- Super bright 3-LED flashlight • Anodized steel case
- On/Off button • Belt pouch and batteries included

#TT7547, 906-585

29.99

PRICED RIGHT
Everyday!

ASIAN BROOM

- Made of natural plant fibers
- 24" handle, 18" wide broom head

LARGE ANGLE BROOM

- 13" wide broom • 42" handle

CORN BROOM

- 10" wide broom head
- 38" solid wood handle

348-241

*While supplies last.

YOUR CHOICE

5.98
VALUED UP TO 9.99 EACH



SPECIAL BUY!

INDUSTRIAL LOBBY DUSTPAN

- Swivel pan keeps dust from falling out

GALVANIZED METAL DUSTPAN

- indoor or outdoor use
- Wooden handle

649-330

STAND-UP DUST PAN

- Wide mouth for large brooms
- Rubber lip to pick-up fine particles

#132-185

*While supplies last.



MANAGER'S SPECIAL

YOUR CHOICE

8.98
REGULAR 11.99

SERVICE, CONVENIENCE AND PRICED RIGHT Everyday!

Prices may vary after December 31, 2002 due to market variations. 12.25.27.02BTADV

• **HAWAII KAI** •
396-5151
333 Keahole St.
Monday-Friday
7:00am-7:00pm
Saturday 7:00am-6:30pm
Sunday 7:00am-5:30pm

• **HONOLULU** •
533-3811
660 N. Nimitz Hwy.
Monday-Friday
7:00am-8:00pm
Saturday 7:00am-6:30pm
Sunday 7:00am-5:30pm

• **KAIMUKI** •
735-7636
3086 Wai'alae Ave.
Monday-Friday
7:00am-9:00pm
Saturday 7:00am-7:00pm
Sunday 7:00am-5:30pm

• **KANEONE** •
247-2181
46-209 Kahuhipa St.
Monday-Saturday
7:00am-6:30pm
Sunday
7:00am-5:30pm

• **MILLANI** •
623-3100
95-455 Māka'imo'imo St.
Monday-Saturday
7:00am-7:00pm
Sunday
7:00am-6:00pm

• **PEARL CITY** •
487-3636
98-1277 Kaahumanu St.
Monday-Friday
7:00am-8:00pm
Saturday 7:00am-6:30pm
Sunday 7:00am-5:30pm

• **WAIANAĒ** •
696-6996
86-120 Farrington Hwy.
Monday-Saturday
7:00am-6:30pm
Sunday
7:00am-5:30pm

• **WAIPAHU** •
671-1746
94-157 Leleao St.
Mon.-Thur. 7:00am-5:30pm
Friday 7:00am-6:00pm
Saturday 7:00am-6:30pm
Sunday 7:00am-5:30pm

free to be

Trapped inside the burdens of a heavy, drab cocoon, the butterfly emerges, escaping her prison, free to lead a more colorful life.

Ah, The Feeling of
Freedom



Ceridian Can Do The Same for You

Release your business from the monotony of payroll processing, tax filing and HR administration. Spread your wings and select Ceridian. Develop new ideas, meet new clients, and grow your business.

Be. Be the butterfly.

For more information, visit www.ceridian.com/myceridian
or call 1-800-729-7655.

Managed business solutions for human resources and employee effectiveness

CERIDIAN
free to be

www.hawaiianseatcovers.com

Drive...

...wet



...in style

...in comfort

...with Aloha

New neoprene. Custom made seat covers in a variety of colors.



FACTORY SIZED SEAT COVERS



HAWAIIAN SEATCOVERS
HawaiianSeatCovers.com

CUSTOM MADE!

Many styles to choose from.

Wide selection of colors.

Dependable, quality installation.

Accessories • Bath Cover • Car Cover • Comforter • Convertible • Coupe • Dashcover • Hatchback • Mini-Van • Office Chair • Pick-Up • Sedan • Sports Car • Station Wagon • SUVs • Truck
Hawaiian Print • Leather • Leatherette • Neoprene • Sheep Skin • Solid Color • Waterproof



PEARL KAI LOCATION!
488-5475
OPEN 7 DAYS
A WEEK
Pearl Kai Shopping Center
98-199 Kam. Hwy.

WAIPAHU LOCATION
676-3754
OPEN 7 DAYS
A WEEK
94-170 Leo'ole Street
Waipahu, HI 96797
(Behind Pflueger Auto
Value Center)

Katzkin



CALL TOLL FREE 1(866)527-7328

www.carseatcover.com



Alphabetical UH Player Roster



No.	Name	Pos.	Ht.	Wt.	Cl.	Exp.	Hometown/Last School
79	Keali'i Aguiar	DL	6-0	310	Jr.	JC	Kakaha, Kauai/Dixie College
83	Mike Akiu Jr.	WR	5-8	164	Fr.	RS	Kailua, Oahu/Kamehameha Schools
93	Houston Ala	DL	6-1	250	Jr.	2L	Waianae, Oahu/Kamehameha Schools
46	Keani Alapa	LB	6-0	221	Jr.	2L	Kaaawa, Oahu/Kamehameha Schools
55	Alapa'i Andrews	OL	6-0	298	Sr.	2L	Honolulu/Punahou School
47	Justin Ayat	KS	5-11	205	So.	1L	Waipahu, Oahu/Kamehameha Schools
1	Mike Bass	RB	5-6	158	So.	1L	Corona, CA/Centennial HS
81	Omar Bennett	WR	5-11	178	Sr.	JC	Los Angeles, CA/Laney CC
13	Keith Bhonapha	DB	5-9	197	Sr.	3L	Oakland, CA/Skyline HS
34	Ikaika Blackburn	LB	5-10	212	So.	SQ	Wailuku, Maui/Baldwin HS
6	Michael Brewster	RB	5-6	176	So.	RS	Houston, TX/University of Tennessee
31	Lamar Broadway	DB	5-11	173	Fr.	RS	Corona, CA/Centennial HS
54	Chris Brown	LB	6-1	255	Sr.	3L	Kahaluu, Oahu/Damien Memorial HS
41	Tyrone Brown	LB	6-1	202	So.	HS	Palmdale, CA/Highland HS
23	Sean Butts	DB	6-3	202	Sr.	3L	Culver City, CA/Culver City HS
14	Timmy Chang	QB	6-2	191	So.	1L	Waipahu, Oahu/St. Louis School
38	Wilson Cluney	LB	6-3	229	So.	JC	Aiea, Oahu/Snow JC
19	Jeremiah Cockheran	WR	6-0	193	Jr.	JC	Fontana, CA/Chaffey CC
18	Justin Colbert	WR	5-8	170	Sr.	3L	Rialto, CA/A.B. Miller HS
58	Laanui Correa	DL	6-5	264	Sr.	2L	Honolulu/UNLV
25	Josiah Cravalho	DB	5-10	188	So.	1L	Kahului/Kaahumanu Hou Christian School
51	Ikaika Curnan	LB	5-11	210	Fr.	RS	Kealia, Kauai/St. Louis School
52	Garret Dearing	DL	6-4	239	Fr.	RS	Hilo, Hawaii'i/Hilo HS
82	Ross Dickerson	WR	5-10	174	Fr.	HS	Waipahu, Oahu/St. Louis School
66	Brandon Eaton	OL	6-3	301	Fr.	RS	Houston, TX/Worthing HS
76	Jonathan Ekno	OL	6-5	300	So.	SQ	Chino Hills, CA/Servite HS
37	Abraham Elimimian	DB	5-10	173	So.	1L	Los Angeles, CA/Crenshaw HS
90	Tala Esera	DL	6-3	265	Fr.	HS	Hauula, Oahu/Kahuku HS
59	Derek Faavi	OL	6-0	266	Fr.	RS	Ewa Beach, Oahu/Campbell HS
39	Pesefea Fiaseu, Jr.	RB	5-9	248	Fr.	RS	Waipahu, Oahu/St. Louis School
86	Denny Flanagan	WR	6-0	179	Fr.	HS	Fountain Valley, CA/Edison HS
53	Lui Fuata	OL	6-2	315	Sr.	3L	Waianae, Oahu/Lahainaluna HS
99	Lui Fuga	DL	6-1	301	Jr.	2L	Waipahu, Oahu/UNLV
22	Josh Galeai	RB	5-11	236	Sr.	1L	Oceanside, CA/Palomar College
87	Kanale George	WR	6-2	193	So.	1L	Aiea, Oahu/St. Louis School
17	David Gilmore	DB	6-0	197	Jr.	2L	Albuquerque, NM/Dorado HS
88	Neal Gossett	WR	5-10	177	Sr.	2L	Mililani, Oahu/Waipahu HS
48	Patrick Lavar Harley	LB	6-0	220	So.	1L	Kahului, Maui/Maui HS
21	Clifton Herbert	WR	5-8	157	Jr.	2L	Palmdale, CA/Quartz Hills HS
36	Omega Hogan	DB	5-10	176	Fr.	RS	Houston, TX/Aldine Senior HS
28	Cameron Hollingsworth	DB	6-0	176	Fr.	RS	Leavenworth, WA/Cascade HS
70	Wayne Hunter	OL	6-6	299	Jr.	1L	Honolulu/University of California
4	Nate Ilaoa	WR	5-9	204	Fr.	RS	Stafford, VA/North Stafford
31	Daniel Inferrera	WR	6-0	189	Fr.	HS	Honolulu/St. Louis School
11	Kevin Jackson	DL	6-5	229	Jr.	2L	Moreno Valley, CA/Valley View HS
35	Patrick Jenkins	DB	6-0	199	Fr.	HS	Orlando, FL/Florida Christian Academy
75	Chad Kahale	OL	6-1	337	So.	1L	Honolulu/St. Louis School
77	Shayne Kajioka	OL	6-3	308	Jr.	2L	Honolulu/St. Louis School
56	Chad Kalilimoku	LB	5-11	243	Jr.	JC	Kapolei, Oahu/Santa Ana College
30	Kila Kamakawiwo'ole	DB	6-3	231	Fr.	RS	Honolulu/Kaimuki HS
60	Marques Kaonohi	OL	6-1	252	Fr.	HS	Waimanalo, Oahu/Kailua HS
5	Chad Kapanui	DB	6-0	205	So.	1L	Honolulu/Roosevelt HS
67	Phil Kauffman	OL	6-1	283	So.	1L	Honolulu/St. Louis School
43	Jonathan Kauka	RB	6-0	209	Sr.	3L	Hilo, Hawaii'i/Waiakea HS
27	Greg Kleidon	P	6-0	190	Sr.	SQ	Los Angeles, CA/Santa Monica College
84	Britton Komine	WR	5-9	184	So.	1L	Honolulu/Maryknoll
34	Nainoa Kuna	WR	5-11	200	Fr.	HS	Honolulu/Punahou School
1	Travis LaBoy	DL	6-4	249	Jr.	1L	San Rafael, CA/Utah State



Alphabetical UH Player Roster



No.	Name	Pos.	Ht.	Wt.	Cl.	Exp.	Hometown/Last School
68	Kahai LaCount	OL	6-2	294	Fr.	HS	Kailua, Oahu/Kailua HS
94	Abu Ma'afala	DL	6-2	268	Fr.	HS	Waipahu, Oahu/Kamehameha Schools
16	Preston Maloney	QB	6-1	186	Fr.	HS	Santa Barbara, CA/Santa Barbara HS
15	Lono Manners	DB	5-11	154	Fr.	RS	Waianae, Oahu/Waianae HS
65	Vince Manuwai	OL	6-2	309	Sr.	3L	Honolulu/Farrington HS
49	Mat McBriar	P	6-0	221	Sr.	2L	E. Brighton, Aust./Brighton Grammar School
3	Kelvin Millhouse Jr.	DB	6-1	205	Jr.	1L	Santa Ana, CA/Mt. San Antonio College
36	Kurt Milne	P	5-11	199	Fr.	HS	Roswell, GA/Centennial HS
48	Nolan Miranda	KS	5-8	162	Fr.	HS	Kahaluu, Oahu/Castle HS
24	Thero Mitchell	RB	5-10	210	Sr.	3L	Bothell, WA/Bothell HS
45	Tanuvasa Moe	LB	5-11	218	Fr.	RS	Honolulu/St. Louis School
69	Uriah Moenoa	OL	6-3	327	So.	1L	Honolulu/Iolani School
22	Kyle Mowry	DB	6-0	186	Fr.	HS	Sacramento, CA/Del Oro HS
29	Kilinahe Noa	LB	6-0	213	So.	1L	Honolulu/Kaiser HS
2	Chad Owens	WR	5-9	177	So.	1L	Honolulu/Roosevelt HS
24	Kenny Patton	DB	6-0	170	Fr.	HS	Honolulu/St. Francis
33	Hyrum Peters	DB	5-8	188	Jr.	2L	Laie, Oahu/Kahuku HS
42	Leonard Peters	DB	6-1	174	Fr.	HS	Laie, Oahu/Kahuku HS
26	Se'e Poumele	WR	5-9	179	Jr.	JC	Oceanside, CA/Southwestern College
12	Jeffrey Rhode	QB	6-5	243	Fr.	RS	Eugene, OR/Churchill HS
92	Lance Samuseva	DL	5-11	290	Jr.	2L	Waianae, Oahu/Farrington HS
71	Ryan Santos	OL	6-5	320	So.	1L	Mililani, Oahu/Mililani HS
64	Samson Satele	OL	6-2	289	Fr.	HS	Kaneohe, Oahu/Kailua HS
97	Isaac Sopoaga	DL	6-3	315	Jr.	JC	Pago Pago, Amer. Samoa/Col. of the Canyons
96	Robertson Sosene	DL	6-2	296	Jr.	JC	Pago Pago Amer. Samoa/Amer. Samoa CC
15	Sean Stennis	WR	5-11	153	Fr.	HS	Inglewood, CA/Fairfax HS
85	Bryant Stevens	WR	6-2	182	So.	1L	Hilo, Hawai'i/UC San Diego
11	Ryan Stickler	QB	6-2	218	Fr.	HS	Alta Loma, CA/Alta Loma HS
80	Mark Tate	WR	6-1	212	So.	1L	San Diego, CA/Hoover HS
57	Peivi Tauilili	DL	6-0	258	Fr.	HS	West Covina, CA/West Covina HS
10	Pisa Tinoisamoa	LB	6-0	218	Sr.	2L	Vista, CA/Vista HS
72	Dane Uperesa	OL	6-4	305	Fr.	HS	Hauula, Oahu/Punahou School
20	John West	RB	5-10	180	Jr.	JC	San Diego, CA/Yuba City College
8	Jason Whieldon	QB	6-1	187	Jr.	JC	Orange, CA/Saddleback CC
35	Lamont Williams	WR	6-0	163	Fr.	HS	Ft. Lauderdale, FL/St. Thomas Aquinas HS
95	Colin Wills	DL	6-1	244	Sr.	1L	Omaha, NE/Burke HS
7	Shawn Withy-Allen	QB	6-4	219	Sr.	3L	Kailua, Oahu/Kalaheo HS
49	Laiana Wong	LB	5-10	213	Fr.	RS	Honolulu/Roosevelt HS
27	Gary Wright	DB	5-10	201	Jr.	2L	Kailua, Oahu/Kalaheo HS
44	Matt Wright	LB	6-1	225	Sr.	3L	Kailua, Oahu/Iolani School

Experience Key: 3L – earned three letters; 2L – earned two letters; 1L – earned one letter; HS – high school; JC – junior college; RS – redshirt; SQ – was on the team but did not letter; TR – transfer.

Head Coach
Assoc. Head Coach/Linebackers
Defensive Coordinator
Defensive Line
Offensive Line

June Jones
 George Lumpkin
 Kevin Lempa
 Vantz Singletary
 Mike Cavanaugh

Quarterbacks
Running Backs
Wide Receivers
Defensive Secondary
Offensive Assistant

Dan Morrison
 Wes Suan
 Ron Lee
 Rich Miano
 Tyson Helton



Numerical UH Player Roster



No.	Name	Pos.	No.	Name	Pos.
1	Mike Bass	RB	43	Jonathan Kauka	RB
1	Travis LaBoy	DL	44	Matt Wright	LB
2	Chad Owens	WR	45	Tanuvasa Moe	LB
3	Kelvin Millhouse Jr.	DB	46	Keani Alapa	LB
4	Nate Ilaoa	WR	47	Justin Ayat	KS
5	Chad Kapanui	DB	48	Patrick Lavar Harley	LB
6	Michael Brewster	RB	48	Nolan Miranda	KS
7	Shawn Withy-Allen	QB	49	Mat McBriar	P
8	Jason Whieldon	QB	49	Laiana Wong	LB
9	Matt Manuma	DB	51	Ikaika Curnan	LB
10	Pisa Tinoisamoa	LB	52	Garret Dearing	DL
11	Kevin Jackson	DL	53	Lui Fuata	OL
11	Ryan Stickler	QB	54	Chris Brown	LB
12	Jeffrey Rhode	QB	55	Alapa'i Andrews	OL
13	Keith Bhonapha	DB	56	Chad Kalilimoku	LB
14	Timmy Chang	QB	57	Peivi Tauilili	DL
15	Sean Stennis	WR	58	La'anui Correa	DL
15	Lono Manners	DB	59	Derek Faavi	OL
16	Preston Maloney	QB	60	Marques Kaonohi	OL
17	David Gilmore	DB	64	Samson Satele	OL
18	Justin Colbert	WR	65	Vince Manuwai	OL
19	Jeremiah Cockheran	WR	66	Brandon Eaton	OL
20	John West	RB	67	Phil Kauffman	OL
21	Clifton Herbert	WR	68	Kahai LaCount	OL
22	Josh Galeai	RB	69	Uriah Moenoa	OL
22	Kyle Mowry	DB	70	Wayne Hunter	OL
23	Sean Butts	DB	71	Ryan Santos	OL
24	Thero Mitchell	RB	72	Dane Uperesa	OL
24	Kenny Patton	DB	75	Chad Kahale	OL
25	Josiah Cravalho	DB	76	Jonathan Ekno	OL
26	Se'e Poumele	WR	77	Shayne Kajioka	OL
27	Greg Kleidon	P	79	Keali'i Aquiar	DL
27	Gary Wright	DB	80	Mark Tate	WR
28	Cameron Hollingsworth	DB	81	Omar Bennett	WR
29	Kilinahe Noa	LB	82	Ross Dickerson	WR
30	Kila Kamakawiwo'ole	DB	83	Mike Akiu Jr.	WR
31	Lamar Broadway	DB	84	Britton Komine	WR
31	Daniel Inferrera	WR	85	Bryant Stevens	WR
33	Hyrum Peters	DB	86	Denny Flanagan	WR
34	Ikaika Blackburn	OL	87	Kanale George	WR
34	Nainoa Kuna	WR	88	Neal Gossett	WR
35	Lamont Williams	WR	90	Tala Esera	DL
35	Patrick Jenkins	DB	92	Lance Samuseva	DL
36	Omega Hogan	DB	93	Houston Ala	DL
36	Kurt Milne	P	94	Abu Ma'afala	DL
37	Abraham Elimimian	DB	95	Colin Wills	DL
38	Wilson Cluney	LB	96	Robertson Sosene	DL
39	Pesefea Fiaseu, Jr.	RB	97	Isaac Sopoaga	DL
41	Tyrone Brown	LB	99	Lui Fuga	DL
42	Leonard Peters	DB			



Numerical Tulane Player Roster



No.	Name	Pos.	No.	Name	Pos.
1	Tristan Smith	WR	50	Will Blaylock	OL
2	Billy Don Malone	QB	51	Willie Christian	OL
3	Jeff Sanchez	CB	53	Chris Williams	DE
4	Quentin Brown	DB	54	Marlon Tickle	DL
6	Nick Cannon	QB	55	Joe Traina	OL
6	T.J. Henry	K	56	Terry Woo	LB
7	J.P. Losman	QB	60	Seth Zaunbrecher	OL
8	Nick Narcisse	WR	62	Brendon Drysdale	OL
9	Roydell Williams	WR	64	Derek Rogers	OL
10	Tommy Griffin, Jr.	CB	65	Lane Macaluso	DS
11	Derrick Joseph	QB	66	Donald Madlock	OL
12	Dayne Ashley	S	68	Chris McGee	OL
13	Lynaris Elpheage	CB	70	Kass Kemper	OL
14	Adrian Mitchell	DB	71	Stephen Segari	DE
15	Peter Cardinale	RB	72	Matt Traina	OL
15	Terrence Peterson	S	73	Joe Mitchell	OL
16	Chino Fontenette	RB	75	Mark Burgess	OL
17	Bubba Terranova	WR	76	Jimmy Kosienski	OT
18	Terry Fontenot	LB	79	Robert Hand	OL
19	Cletus McGee	WR	80	Chris Bush	WR
20	Bruce Youmans	DB	81	Terrence Tarver	DL
21	Brant Hocke	RB	82	Laine Sambrooks	DL
22	Gary Malone	WR	83	Carl Davis	WR
23	Trawick Boger	SS	85	Floyd Dorsey	DE
24	Damarcus Davis	WR	87	Jerome Landry	TE
25	James Dunn	WR	88	Bobby Hoover	TE
26	Mewelde Moore	RB	89	Roxie Shelvin	DL
27	Joey Dawson	DB	90	Taylor Bertin	DE
28	Bart Grasso	DB	91	Kenan Blackmon	DE
28	Jovon Jackson	RB	93	Taurean Brown	DL
30	Darren Sapp	DB	94	Chris Washington	DE
31	Sean Lucas	CB	95	Michael Roberts	DE
31	Ian Miller	FB	96	Lonnie Crayton	DT
32	Brandt Quick	LB	97	Jay Ashton	DL
34	Jeremy Foreman	CB	98	Brandon Rottmayer	DL
35	Winfred Brown	DB	99	Wallace Mateen	DL
36	Anthony Cannon	LB			
37	Gerald Brobbey	LB			
38	Kris Coleman	RB			
39	Antonio Mason	LB			
40	Daniel Nevil	LB			
41	Wesley Heath	LB			
42	Lyneal Strain	WR			
43	Quintin Jones	FB			
44	Beau Stubbs	DB			
45	Chris Beckman	P			
46	Blake Baker	LB			
47	Seth Marler	K/P			
48	Tye Graham	TE/FB			
49	Stephen Hedemann	TE			



Alphabetical Tulane Player Roster



No.	Name	Pos.	No.	Name	Pos.	
12	Dayne Ashley	S	6-3	213	Fr. RS	Jena, LA Jena
97	Jay Ashton	DL	6-3	254	So. 1L	Monroe, LA/Ouachita
46	Blake Baker	LB	5-10	220	So. 1L	Houston, TX/Clear Lake
45	Chris Beckman	P	6-2	190	Fr. HS	Grenada, MS/Grenada
90	Taylor Bertin	DE	6-2	240	Fr. HS	Baton Rouge, LA/Woodlawn
91	Kenan Blackmon	DE	6-5	262	Sr. 3L	Tallahassee, FL/Godby
50	Will Blaylock	OL	6-3	300	Fr. HS	Tyler, TX/John Tyler
23	Trawick Boger	SS	6-1	203	So. 1L	Decatur, GA/Southwest Dekalb
37	Gerald Brobbey	LB	5-9	184	So. 1L	Dallas, TX/Berkner
4	Quentin Brown	DB	5-9	175	Sr. 3L	Ennis, TX/Ennis
93	Taurean Brown	DL	6-6	270	Fr. HS	Katy, TX/Cinco Ranch
35	Winfred Brown	DB	5-9	172	Jr. TR	Marietta, GA/Harrison
75	Mark Burgess	OL	6-5	290	Fr. HS	Odessa, FL /Tampa Jesuit
80	Chris Bush	WR	6-1	195	So. 1L	LaPlace, LA/East St. John
36	Anthony Cannon	LB	6-0	210	Fr. HS	Stone Mountain, GA/Stephenson
6	Nick Cannon	QB	6-3	200	Fr. HS	Hahnville, LA/Hahnville
15	Peter Cardinale	RB	5-7	180	Fr. WO	Montclair, VA/Forest Park
51	Willie Christian	OL	6-5	255	Fr. RS	Pensacola, FL/Pensacola
38	Kris Coleman	RB	6-0	243	Jr. 2L	Marrero, LA/Archbishop Shaw
96	Lonnie Crayton	DT	6-3	280	Jr. 2L	Springfield, FL/Rutherford
83	Carl Davis	WR	5-11	172	So. 1L	Algiers, LA/O.P. Walker
24	Damarcus Davis	WR	6-0	180	Fr. HS	Shreveport, LA/Fair Park
27	Joey Dawson	DB	6-2	189	So. SQ	Gibson, LA/H.L. Bourgeois
85	Floyd Dorsey	DE	6-0	258	Sr. 3L	Tyler, TX/John Tyler
62	Brendon Drysdale	OL	6-1	308	Jr. 2L	Middleton, MA/Masconmet Regional
25	James Dunn	WR	5-8	172	Jr. 2L	Santa Monica, CA/St. Monica Catholic
13	Lynaris Elpheage	CB	5-9	170	Jr. 2L	New Orleans, LA/Carver
16	Chino Fontenette	RB	5-10	202	Jr. SQ	Houston, TX/North Shore
18	Terry Fontenot	LB	5-11	212	Sr. 3L	Lake Charles, LA/LaGrange
34	Jeremy Foreman	CB	6-2	164	Fr. HS	Lutcher, LA /Lutcher
48	Tye Graham	TE/FB	6-2	245	Fr. HS	Kingwood, TX/Kingwood
28	Bart Grasso	DB	6-0	182	Fr. RS	Birmingham, AL/John Carroll
10	Tommy Griffin, Jr.	DB	5-11	190	Fr. HS	Tyler, TX/John Tyler
79	Robert Hand	OL	6-6	250	Fr. HS	Spring, TX/Klein Oak
41	Wesley Heath	LB	6-0	222	Jr. 2L	Marietta, GA/Wheeler
49	Stephen Hedemann	TE	6-3	231	Sr. SQ	Albuquerque, NM/La Cueva
6	T.J. Henry	K	5-9	160	Fr. WO	Altadena, CA/La Salle
21	Brant Hocke	RB	5-8	189	Sr. 2L	New Orleans, LA/Jesuit
88	Bobby Hoover	TE	6-4	252	So. 1L	Katy, TX/Taylor
28	Jovon Jackson	RB	5-11	206	Fr. HS	St. Petersburg, FL/Gibbs Senior
43	Quintin Jones	FB	6-0	215	Fr. HS	Henderson, NV/Bishop Gorman HS
11	Derrick Joseph	QB	5-11	187	Sr. 3L	Harvey, LA/Archbishop Shaw
70	Kass Kemper	OL	6-4	288	Fr. RS	Baton Rouge, LA/Catholic
76	Jimmy Kosienski	OT	6-7	280	So. 1L	Baton Rouge, LA/Redemptorist
87	Jerome Landry	TE	6-4	240	Fr. HS	Chalmette, LA/Holy Cross
7	J.P. Losman	QB	6-3	216	Jr. 2L	Venice, CA /Venice
31	Sean Lucas	CB	5-11	175	Fr. HS	Lithonia, GA/Stephenson
65	Lane Macaluso	DS	6-2	240	So. SQ	New Orleans, LA/Brother Martin
66	Donald Madlock	OL	6-4	300	Fr. HS	Tyler, TX/John Tyler
2	Billy Don Malone	QB	6-2	190	Fr. HS	Blossom, TX/North Lamar
22	Gary Malone	WR	6-1	205	Fr. HS	Blossom, TX/North Lamar
47	Seth Marler	K/P	6-0	195	Sr. 3L	Lilburn, GA/Parkview
39	Antonio Mason	LB	6-0	212	Fr. RS	Mobile, AL/Murphy
99	Wallace Mateen	DL	6-0	282	So. 1L	Richardson, TX/Berkner
68	Chris McGee	OL	6-4	265	Fr. RS	Beaumont, TX/Ozen
19	Cletus McGee	WR	6-1	192	Fr. RS	Tyler, TX/John Tyler
31	Ian Miller	FB	6-0	220	Fr. HS	Dallas, TX/Episcopal
14	Adrian Mitchell	DB	5-10	185	Sr. 3L	Alexandria, LA/Bolton



Alphabetical Tulane Player Roster



No.	Name	Pos.	No.	Name	Pos.
73	Joe Mitchell	OL	6-3 324	Jr. 1L	New Iberia, LA/Catholic
26	Mewelde Moore	RB	6-1 203	Jr. 2L	Baton Rouge, LA/Belaire
8	Nick Narcisse	WR	6-0 180	Jr. 1L	Slidell, LA/Salmen
40	Daniel Nevil	LB	6-1 220	Jr. 2L	New Orleans, LA/Archbishop Shaw
15	Terrence Peterson	S	5-11 190	Fr. HS	Alvin, TX/Alvin
32	Brandt Quick	LB	6-1 235	Jr. TR	Mandeville, LA/Jesuit
95	Michael Roberts	DE	6-3 245	Fr. HS	Houston, TX/Memorial
64	Derek Rogers	OL	6-5 315	Fr. HS	St. Amant, LA/St. Amant
98	Brandon Rottmayer	DL	6-5 257	So. 1L	Clearwater, FL/Countryside
82	Laine Sambrooks	DL	6-5 255	So. SQ	Houston, TX/Kingwood
3	Jeff Sanchez	DB	5-10 175	Sr. 3L	Meraux, LA /Archbishop Hannan
30	Darren Sapp	DB	6-0 185	So. 1L	Jacksonville, FL/Stanton Prep
71	Stephen Segari	DE	6-0 207	Jr. SQ	Metairie, LA/Archbishop Rummel
89	Roxie Shelvin	DL	6-2 285	Sr. 3L	Franklin, LA/Franklin
1	Tristan Smith	WR	6-0 180	So. 1L	Slidell, LA/Salmen
42	Lyneal Strain	WR	5-8 170	Fr. RS	Van Nuys, CA/Venice
44	Beau Stubbs	DB	6-1 180	Fr. HS	Slidell, LA/Salmen
81	Terrence Tarver	DL	6-1 270	Jr. 2L	West Monroe, LA/West Monroe
17	Bubba Terranova	WR	6-3 185	Fr. HS	Slidell, LA/Salmen
54	Marlon Tickle	DL	6-1 290	Sr. 3L	Austell, GA/Pebblebrook
55	Joe Traina	OL	6-3 269	Fr. RS	Coral Gables, FL/Coral Gables
72	Matt Traina	OL	6-3 267	Fr. RS	Coral Gables, FL/Coral Gables
94	Chris Washington	DL	6-2 225	Sr. SQ	Newellton, LA/Newellton
53	Chris Williams	DE	6-3 225	So. 1L	New Orleans, LA/Carver
9	Roydell Williams	WR	6-2 183	Jr. 2L	LaPlace, LA/East St. John
56	Terry Woo	LB	5-7 220	Jr. WO	Chalmette, LA/Metairie Country Day
20	Bruce Youmans	DB	5-10 179	Fr. RS	Gibsonton, FL/East Bay
60	Seth Zaunbrecher	OL	6-4 290	Sr. 1L	Crowley, LA/Notre Dame

Experience Key: 3L – earned three letters; 2L – earned two letters; 1L – earned one letter; HS – high school; JC – junior college; RS – redshirt; SQ – was on the team but did not letter; TR – transfer; WO – walk-on.

Head Coach

Outside Linebackers

Running Backs

Defensive Backs

Offensive Line

Offensive Coordinator/Quarterbacks

Chris Scelfo

Garrett Chachere

Greg Davis, Jr.

Joey Houston

Don Mahoney

Frank Scelfo

Def. Coordinator/Inside Linebackers

Tight Ends

Recruiting Coordinator/Def. Line

Wide Receivers

Graduate Assistant

Graduate Assistant

Eric Schumann

Brad Smiley

Giff Smith

Trooper Taylor

Trey Godfrey

Casey Vogt



Defensive end Floyd Dorsey, the first Tulane defensive lineman to earn first-team All-Conference USA since 1996, enjoyed a career year as a senior with career bests in tackles (60), sacks (7.5) and pass break ups (5).



Tulane Coaching Staff



In just four seasons as head coach of the Tulane Green Wave, Chris Scelfo has already put his name atop the Tulane coaching charts while building a program based on the lessons of loyalty, hard work and discipline he learned growing up in nearby New Iberia, Louisiana.

With a bowl trip secured in 2002, Scelfo will become the FIRST coach in the 110-year history of Tulane Football — a list 36 names long — to coach the Green Wave in two bowl games.

Overall, with 39 wins over the last six seasons, Tulane is in the midst of the most successful run of seasons in school history. In fact, you have to go back 63 years — to the 1934 through 1939 seasons — to find six seasons when the Wave accumulated more victories.

Scelfo has done it by building his program from the ground up, with recruiting classes filled with talented players that compete hard both on the field and in the classroom. Again in 2002, Tulane led all league schools with five players on the Conference All-Freshman Team, with at least two freshmen earning Freshman All-America honors.

During Scelfo's tenure, Tulane has featured the top passer, top rusher, top kicker and top sacker in school history with a roster of young players ready to take aim at those records and many others.

Scouts from the National Football League have noticed the talent Scelfo has collected and developed at Tulane. In the past two seasons, 10 Tulane players either signed free agent contracts with or were drafted by NFL teams.

Scelfo has put his stamp firmly on the Tulane team, from the exciting, wide-open offense and opportunistic, play-making defense on the field, to the emphasis on academics, community service, discipline and hard work off the field.

His commitment to the academic development and achievements of his players is evident in nearly every aspect of his program. From scheduling spring drills around players' class schedules to selective recruiting with an eye toward a prospect's future academic success to excusing players from spring drills to allow them to concentrate on academics, school considerations come first. That emphasis is evident in the graduation rates as Tulane ranked fourth in the nation in Division I-A last year with an 89 percent rate for the 1994-95 freshman class. The latest figures continue the trend as Tulane's 82



Chris Scelfo Head Coach

percent number for 1995-96 ranked the Wave 11th in the country for that class, with the four-class average at an impressive 80 percent, fifth among all Division I-A football programs.

Scelfo, 39, was named the Green Wave's 36th head coach on December 7, 1998. He and his wife, Nancy, have two children, Sarah and Joseph. From his rapport with and concern for his players to his emphasis on academics to his exciting offensive and defensive styles to his Louisiana roots, Scelfo obviously fits at Tulane, and Tulane fits Scelfo.

"Tulane University is committed to building a football program, and to building it the right way, through continuity and consistency in the program," Scelfo said. "I'm excited to be the head coach at Tulane, and I'm excited about the future of this football program."

With a bowl game in 2002 capping Scelfo's outstanding fourth season, the future of Tulane football looks bright indeed.

Tulane Coaching Staff continues on page 46

MORE OPTIONS

YOUR BEST RUN?
FOR PANTS...
AT MACY'S

OUR LINEUP
INCLUDES:

- DOCKERS®
- SAVANE®
- LEVI'S®
- DKNY
- HAGGAR®
- AND MANY
OTHERS



**SAVE 10% MORE
YOUR FIRST TWO DAYS...**

When you open a Macy's account.
Some exclusions apply. Subject to credit approval.
See your Sales Associate for details.



macy's **MORE YOU.**

**With Our Front Line,
Your Business
Will Score!**



Wanna Play?

Proud supporter of the ConAgra Foods
Hawaii Bowl. **Go UH Warriors!**

www.cdsinc.com
Pacific Rim
808.527.2000
Western United States
1.877.319.1135

advertisement

CAL TOPS 'CANES IN LATEST POLL



- 1 CAL
- 2 MIAMI (FL)
- 3 OKLAHOMA
- 4 COLORADO
- 5 TENNESSEE
- 6 TEXAS
- 7 FLORIDA STATE
- 8 FLORIDA
- 9 UCLA
- 10 UNIV. OF TOLEDO



Can the 'Canes repeat? Can the Sooners make it two out of the last three? Who will win the Heisman? How many polygons does a Butkus Award winner get? Where is Berkeley? The answers to these (No. No. Look to Texas. Thousands. Take I-80 west and follow the signs.) and other pressing questions can be found in this year's College Football Top 10 poll:

1 CAL

So they went 1-10 last year. Big deal. Serious time spent in the Blue Chip Recruiting Mode has made this team into a rough bunch on the gridiron. A new Power I formation adds a threat for this turn-around team.

2 MIAMI (FL)



How good is this team? Eight or nine of their starters should be in NFL. GameDay™ next year. The 'Canes may have the toughest schedule in football with games against Florida, Tennessee, Virginia Tech and the Florida State Seminoles. About the only quality teams not on their schedule are in the NFL.

3 OKLAHOMA

New Hot Routes can put the 2000 champs right back at the top. Which means almost as much to the Sooners as beating their heated rival, the Nebraska Cornhuskers.

4 COLORADO

Will the Buffs defend their Big 12 crown using the wishbone? The flexbone? The full house? Only the coach controlling the playbook knows for sure.

5 TENNESSEE

New high-low tackling might give the Volunteers their toughest D in years.

6 TEXAS

Can their quarterback capture the Heisman against what may be the toughest conference in Division I? Can the D come up Texas big? Not even our highly evolved artificial intelligence can answer that one.

7 FLORIDA STATE



Same coach. Same expectations. Same potential: Nothing but a national championship will do.

8 FLORIDA



New coach. Same expectations. Same potential: Nothing but a national championship will do.

9 UCLA



Look for the Bruins to utilize a sensational receiving core and Hot Routes to vie for a national championship. Then look for them to vie for a championship all over again in the NCAA® Final Four® 2003 edition.

10 UNIVERSITY OF TOLEDO

A great run in Career Mode gets these overachieving Rockets a major BCS Bowl bid and a Top 10 finish. And their coach the chance to take over a major college powerhouse. Enjoy that animated contract, coach.



PlayStation 2

The "Officially Licensed Collegiate Products" label is the exclusive property of The Collegiate Licensing Company. The "Collegiate Licensed Product" label is the property of the Independent Labeling Group. All names, logos, team icons and mascots associated with the NCAA, universities, bowls and conferences are the exclusive property of the respective institutions. Heisman Memorial Trophy and likeness of the actual trophy are registered service marks owned by the Downtown Athletic Club under registration numbers 936,853 and 935,852, respectively. Heisman and Heisman Trophy Award are service marks owned by the Downtown Athletic Club of New York City, Inc. The NCAA Football logo is a registered trademark of the NCAA licensed to NCAA Football USA, Inc. GameBreaker, 989 and the 989 Sports logo are registered trademarks, and Total Control Passing and Analog Camera System are trademarks of Sony Computer Entertainment America Inc. Designed and developed by Red Zone Interactive, Inc. and 989 Sports development team. "PlayStation" and the "PS" Family logo are registered trademarks of Sony Computer Entertainment Inc. ©2002 Sony Computer Entertainment America Inc.



Tulane Coaching Staff



Garrett Chachere Outside Linebackers

New Orleans native and Tulane alumnus Garret Chachere begins his fourth season as a member of the Green Wave coaching staff in 2002. Chachere continues to serve as Tulane's outside linebackers' coach

where he directs some of the most versatile players on the Green Wave defense. He is also very involved in the Green Wave recruiting efforts in his hometown city of New Orleans and in Houston.

Chachere came to Tulane after one season as the tight ends coach at Northeast Louisiana University (now UL-Monroe). Prior to that, he spent three seasons coaching the inside linebackers at Nicholls State University. During his tenure there, the Colonels advanced to the 1996 NCAA Division I-AA national playoffs.

Chachere, 33, is married to the former Lauren Duplessis of Hampton, Va. They have one child, a son, Grant (3). The lone Tulane alumnus on the coaching

staff, he is a member of the American Football Coaches Association and the Black Coaches' Association.



Greg Davis, Jr. Running Backs

Greg Davis Jr. enters his third season as Tulane's running backs coach in 2002. As running backs coach, he has the luxury of tutoring one of the top returning backs in the nation in Green Wave All-America candidate

Mewelde Moore.

Davis came to Tulane from Alabama A&M, where he coached quarterbacks in 1999. He spent the 1998 season at the University of Texas, working with the quarterbacks and kickers. In his year at Texas, the Longhorns won the Cotton Bowl.

A member of the AFCA, Davis is married to the former Karen Erbeling, of Johnson Bayou, La. The couple has a daughter, Taylor Amanda, born Oct. 25, 2001.

Tulane Coaching Staff continues on page 49

	<p>LIVE WELL PLAY HARD INDULGE</p>		
	<p>Call for a complimentary catalog featuring exquisite offerings including our Chocolate Dipped Original Shortbread and Bien Vivente cookies, made with olive oil.</p>		
<p>585 Hihano Street Hilo, Hawaii 96720</p>	<p>CANDIES BIG ISLAND</p>	<p>Toll free: 1.800.935.5510 Order online at www.bigislandcandies.com</p>	



For history



For adventure



For culture

Mexico has it all.

Mexico, amazingly close with Mexicana

For more information, please contact Mexicana Airlines, toll free at **1-800-531-7921**,
or visit us at www.mexicana.com

MEXICANA 

A STAR ALLIANCE MEMBER 



At Chaminade, we will help you MASTER the possibilities

- ▲ Master of Science in Criminal Justice Administration ▲ Master of Education
- ▲ Master of Science in Counseling Psychology ▲ Master of Business Administration
- ▲ Master of Public Administration ▲ Master of Arts in Pastoral Leadership

At Chaminade, your career is our focus.

Whether you are starting a new career or making the move to a next level of your present career, we will do everything to help you obtain a first class degree with a minimum of hassle. Our professors are among the best in Hawaii, with degrees from some of America's finest institutions, including Harvard, Cornell, UCLA, USC, and Chaminade.

Our year-round program has classes available in the evening and on weekends. Enrollment can be full-time or part-time. You can complete your Chaminade MBA in less time, with more individualized attention, and for less money.

Let us help you MASTER the possibilities.

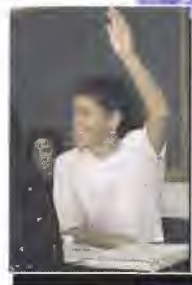
Now you can zip off to class with the click of a mouse. Visit www.chaminade.edu for class schedules!

For information call
739-4612



**Chaminade
University**
OF HONOLULU

3140 Waiialae Avenue, Honolulu, HI 96816





Tulane Coaching Staff



Joey Houston

Defensive Backs

Joey Houston will coach the Green Wave secondary for the third year in 2002.

Houston has a talented cast of all-star candidates and returning starters to work with this season in players such as Adrian Mitchell, Lynaris Elpheage and Jeff Sanchez. They will combine with a host of young players who gained experience a year ago, and a group of incoming freshmen to make up the 2002 secondary.

Houston earned his bachelor's degree in business administration from Gardner-Webb in 1995. He was a three-year starter for the Bulldogs at defensive back, twice earning all-conference honors. He also received the program's leadership award as a senior. Houston, 29, is single.



Don Mahoney

Offensive Line

Offensive line coach Don Mahoney enters his fourth season at Tulane with his most daunting challenge since arriving in New Orleans as he must rebuild the Green Wave offensive line after the departure of four senior starters following the 2001 season.

During his tenure with the Wave, Mahoney has seen his line provide the backbone of the offense as Tulane has put up some of the most impressive numbers in the history of Green Wave football. In fact, Tulane is one of just two teams to be ranked in the Top 12 in passing offense and in the Top 30 in total offense in each of the last three seasons.

A native of Greensburg, Pa., Mahoney is married to the former Carissa Angera. The couple has one son, Jacob (2).



Frank Scelfo

Offensive Coordinator/Quarterbacks

Beginning his seventh season at Tulane in 2002, Frank Scelfo is the longest tenured coach on the Green Wave coaching staff. He has coached the Wave quarterbacks since 1999; prior to that he tutored the wide receivers (1996) and tight ends (1997-98).

Under Scelfo's guidance and leadership, the explosive Green Wave attack has posted three of the four most productive seasons in the 110-year history of Tulane football on

its way to becoming one of the NCAA's most potent attacks. Tulane is one of just two teams to be ranked in the Top 12 in passing offense AND in the Top 30 in total offense in each of the last three seasons. The Green Wave offense gained more than 5,000 yards last year for just the second time in school history while averaging 425 yards per game.

Scelfo is married to the former Holly Kingery and they have two sons, Anthony (15) and Jordan (10).



Eric Schumann

Defensive Coordinator/Inside Linebackers

Twenty-three year coaching veteran Eric Schumann is the newest member of the Green Wave coaching staff after joining the program in January 2002. Schumann took over duties as defensive coordinator and inside linebackers coach after a successful stint as assistant head coach, defensive coordinator and defensive backs coach at SMU over the past five years.

Schumann's SMU defense led the Western Athletic Conference in 2001 and was ranked No. 22 in the nation in total defense, giving up an average of 320.1 yards per game. The Mustangs were No. 30 in rushing defense, surrendering just 122 yards per game, and were 35th in pass efficiency defense.

Schumann earned his bachelor's and master's degrees in physical education from Alabama. A native of Blue Island, Ill., Schumann has a son, Glenn (12) and a daughter, Erica (10).



Brad Smiley

Tight Ends

Brad Smiley begins his third year on the Tulane staff having been elevated to tight ends coach after two seasons as the graduate assistant for the Green Wave's highly-successful offensive unit.

In addition to coaching the tight ends, Smiley also assists in coaching the offensive line and works closely with many of the Green Wave special teams units.

Coaching is a family tradition for Smiley as his grandfather, Bob Smiley, was the head basketball and assistant football coach at Slippery Rock (Pa.) University while his grandmother, Betty, was the head women's basketball coach at Clarion (Pa.) University.

Smiley is married to the former Janna Clary of Natchitoches, La.

Tulane Coaching Staff continues on page 52

Hawaii Defensive Coach Vantz Singletary Lost 90 lbs.

with **SUBWAY®** low fat sub, a
balanced diet and exercise.



7 **SUBWAY**
subs
with **6** grams
of fat
or less

Try Vantz's
favorite
low fat
Turkey Breast
on wheat.

SUBWAY
eat fresh.

SUBWAY
\$1.00 OFF
any footlong sub

One coupon per person per visit. Offer good through March 31, 2003 at participating Subway restaurants. Not valid with any other offer. Not for sale. No cash value. ©2003 DAI. ConAgra 2003

SUBWAY
50¢ OFF
any six inch sub

One coupon per person per visit. Offer good through March 31, 2003 at participating Subway restaurants. Not valid with any other offer. Not for sale. No cash value. ©2003 DAI. ConAgra 2003

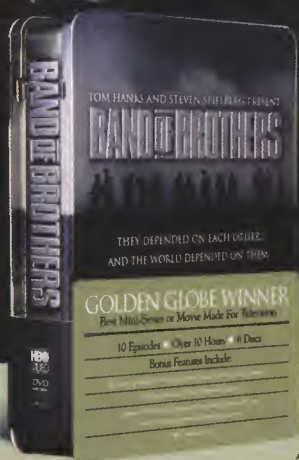
Ask your doctor before starting any weight loss plan.

Vantz, pictured above, lost 90 lbs. by exercising and eating a balanced reduced-calorie diet that included Subway sandwiches with 6 grams of fat or less. His results are not typical. Individuals' weight loss, if any, will vary. Consult your physician before beginning any weight loss program.

Subway® 7 subs with 6 grams of fat or less include the regular 6" Subway Club® (6.0g of fat), Roasted Chicken Breast (5.0g), Ham (5.0g), Roast Beef (5.0g), Veggie Delite® (5.0g), Turkey Breast & Ham (5.0g), and Turkey Breast & Ham (5.0g) prepared according to standard recipes with Italian or wheat bread, meat, onions, lettuce, tomatoes, pickles, green peppers, and olives, and without cheese or condiments (e.g., mayonnaise). Customer requests to modify standard sandwich recipes or add cheese or condiments may increase fat or calorie content.

© 2003 DAI. Subway and Fresh Value Meals are registered trademarks of DAI.

EXTRAORDINARY MEN. EXTRAORDINARY TIMES.
AN EXTRAORDINARY STORY.



TOM HANKS AND STEVEN SPIELBERG PRESENT

BAND OF BROTHERS



The epic miniseries about the men of
Easy Company, 506th Regiment, 101st Airborne Division.
All 10 episodes plus "We Stand Alone Together: The Men Of Easy Company,"
an 80-minute documentary, on 6 Discs or 6 VHS cassettes.

NOW AVAILABLE WHEREVER VIDEOS AND DVDS ARE SOLD.

DREAMWORKS

PLAY•TONE

©2001 Home Box Office, A Division of Time Warner Entertainment Company, L.P. All Rights Reserved. HBO, Home Box Office, and Band of Brothers are trademarks of Time Warner Entertainment Company, L.P.

HBO
VIDEO



Tulane Coaching Staff



Giff Smith
Recruiting
Coordinator/Defensive Line

A three-time Division I-AA All-American defensive lineman, Giff Smith enters his fourth season as Tulane's defensive line coach and 2002 will be his second season as the

Wave's recruiting coordinator and associate head coach.

As recruiting coordinator, Smith led the effort as Tulane signed two of its top classes in several years over the last two seasons. Eleven members of the 2001 class lettered for the Green Wave last fall.

Smith, 33, was inducted into the Georgia Southern University Athletic Hall of Fame in 2000.



Trey Godfrey
Graduate Assistant

Former Tulane cornerback Trey Godfrey moves into a new role, as the Green Wave's defensive graduate assistant, for 2002. Godfrey will assist in scouting, break down opponents' game film and work on the field with his former teammates in the defensive backfield.

Godfrey earned his bachelor of science degree in exercise and sports sciences from Tulane and is currently pursuing a master's degree in liberal arts at the school. His 3.76 g.p.a. lifted him to the Dean's List for the 2001-2002 school year.



Trooper Taylor
Wide Receivers

Wide receivers coach Trooper Taylor begins his fourth year with the Green Wave in 2002. The personable coach draws on his family experiences as one of 16 children to turn his wide receivers into his family,

each of whom is challenged to do his best, both on the field and off. During his tenure, Tulane receivers have been a vital part of the record-setting offense.

Taylor, 32, is married to the former Evi Crosby. They have two children, son Blaise (6) and daughter Starr (4).



Casey Vogt
Graduate Assistant

Casey Vogt begins his first season as Tulane's offensive graduate assistant coach in 2002, working primarily with coach Don Mahoney and the Green Wave offensive line. Vogt's duties at Tulane include preparation of the scouting reports, film breakdown, on the field coaching and various administrative responsibilities.

A native of Erie, Pa., Vogt is one of four children. His father, Jim (Iroquois HS) and his brother Chad (Harbor Creek HS) are both high school coaches in Pennsylvania. He is single and resides in Metairie, La.

Waikiki (24 Hours) 973-5685 Free Parking

Pearlridge (Moanalua Road) 483-3565

Aiea Park Shopping Center 254-3727

Steak and All-You-Can-Eat Shrimp

Steak and Eggs

Mega Bacon Cheeseburger

Steak-Seafood-Salad Breakfast-Lunch-Dinner

Sizzler Hawaii

Great Food Says Sizzler

Dillingham Plaza 832-4665 • Waipahu Town Center 671-7433

Ohana Supporting Hawaii's Athletic Programs

TELCOM/CONSTRUCTION INC.

"Hawaii's Premier Telecommunications Contractor"

487-1912 www.ohanatelcom.com Lic. ABC21926

NATIVE HAWAIIAN OWNED & OPERATED 8(a) Certified



The All-New
Toyota 4Runner
 03



Completely reengineered from top to bottom, there's never been a 4Runner this tough, capable - or comfortable. It's wider, longer and more powerful, with a first-time ever V8 engine. Equipped with new technological advancements, the 4Runner can help you surmount almost any obstacle or terrain. So start thinking about your next adventure. Is your destination that one expanse that's never been traveled? The 2003 4Runner.

Engineered to get there.

4.7-LITER DOHC 32-VALVE V8

This I-FORCE V8 engine generates up to 320 lb.-ft. of torque at 3400 rpm for dynamic acceleration and power at any speed.

SPORT ENHANCEMENT SUSPENSION (X-REAS)

Improves vehicle on-road handling and comfort during cornering or when traveling on a bumpy surface. Shock absorbers are hydraulically linked diagonally to help the wheels maintain contact with the driving surface and lessen vehicle body roll and pitch. (Standard on Sport Edition, available on Limited)

LARGER, ROOMIER

A larger cabin means increased front and rear shoulder and hip room. 4Runner's cargo area boasts over 40 cu.ft. of space. By folding the 60/40 split rear seats flat, you'll have over 75 cu.ft. of cargo-carrying possibilities.

DOWNHILL ASSIST CONTROL (DAC)

Provides improved stability and control when vehicle is descending steep or slippery grades by reducing throttle opening and selectively applying brakes, helping to eliminate wheel-locking and resulting in a controlled and constant vehicle speed. (Standard on 4WD models.)



 **TOYOTA**
HAWAII DEALERS

www.ToyotaHawaii.com

WINDWARD TOYOTA
 45-655 Kam Hwy., Kaneohe • Ph. 564-1400

WAIPAHU AUTO CO.
 94-729 Farrington Hwy., Waipahu • Ph. 564-1000

SERVICE MOTOR CO.
 105 S. Kam Hwy., Wahiawa • Ph. 564-1700

KAIMUKI TOYOTA
 3282 Waialae Ave., Kaimuki • Ph. 564-1500

TOYOTA CITY
 2850 A Pukoloa St., Mapunapuna • Ph. 564-1100

KAUAI TOYOTA
 4337 Rice St., Lihue • Ph. 245-6978

BIG ISLAND TOYOTA
 74-5504 Kaiwi St., Kona • Ph. 329-8517

BIG ISLAND TOYOTA
 811 Kanoelehua Ave., Hilo • Ph. 935-2920

MAUI TOYOTA
 320 Hana Hwy., Kahului • Ph. 877-2781

Fortunately, there's life after football.

Even warriors need to relax.

And no one knows our local lifestyle better than Hilo Hattie,
your Hawaiian outfitters since 1963.

Congratulations to the Warriors on a great season! And here's a little mahalo for all the fans ...

Redeem this coupon at any Hilo Hattie location for

20% Off*

All Hilo Hattie Labeled Fashion

*Valid only at time of purchase. Not valid on sale merchandise. Cannot be combined with other discounts, offers or coupons. No bulk or corporate purchases. Expires 3/31/03 #9112



The Store
of
Hawaii
HiloHattie.com

OAHU ~ MAUI ~ KAUAI ~ BIG ISLAND

Coming January 1, 2003

**A SHOCKINGLY
REFRESHING CHOICE.**



PEPSI, PEPSI-COLA, SIERRA MIST, DIET SIERRA MIST and The Pepsi Globe design are trademarks of PepsiCo, Inc.

from the
PEPSI®
makers of

**Congratulations
Warriors!**





Meet the Tulane Green Wave



12 Dayne Ashley
S, 6-3, 213, Fr.



97 Jay Ashton
DL, 6-3, 254, So.



46 Blake Baker
LB, 5-10, 220, So.



45 Chris Beckman
P, 6-2, 190, Fr.



90 Taylor Bertin
DE, 6-2, 240, Fr.



91 Kenan Blackmon
DE, 6-5, 262, Sr.



50 Will Blaylock
OL, 6-3, 300, Fr.



23 Trawick Boger
SS, 6-1, 203, So.



37 Gerald Brobbey
LB, 5-9, 184, So.



4 Quentin Brown
DB, 5-9, 175, Sr.



93 Taurean Brown
DL, 6-6, 270, Fr.



35 Wilfred Brown
DB, 5-9, 172, Jr.

Meet the Tulane Green Wave continues on page 60

**HAWAII'S #1
INTERNET DIRECTORY
IS POWERED BY
PROHAWAII.COM**



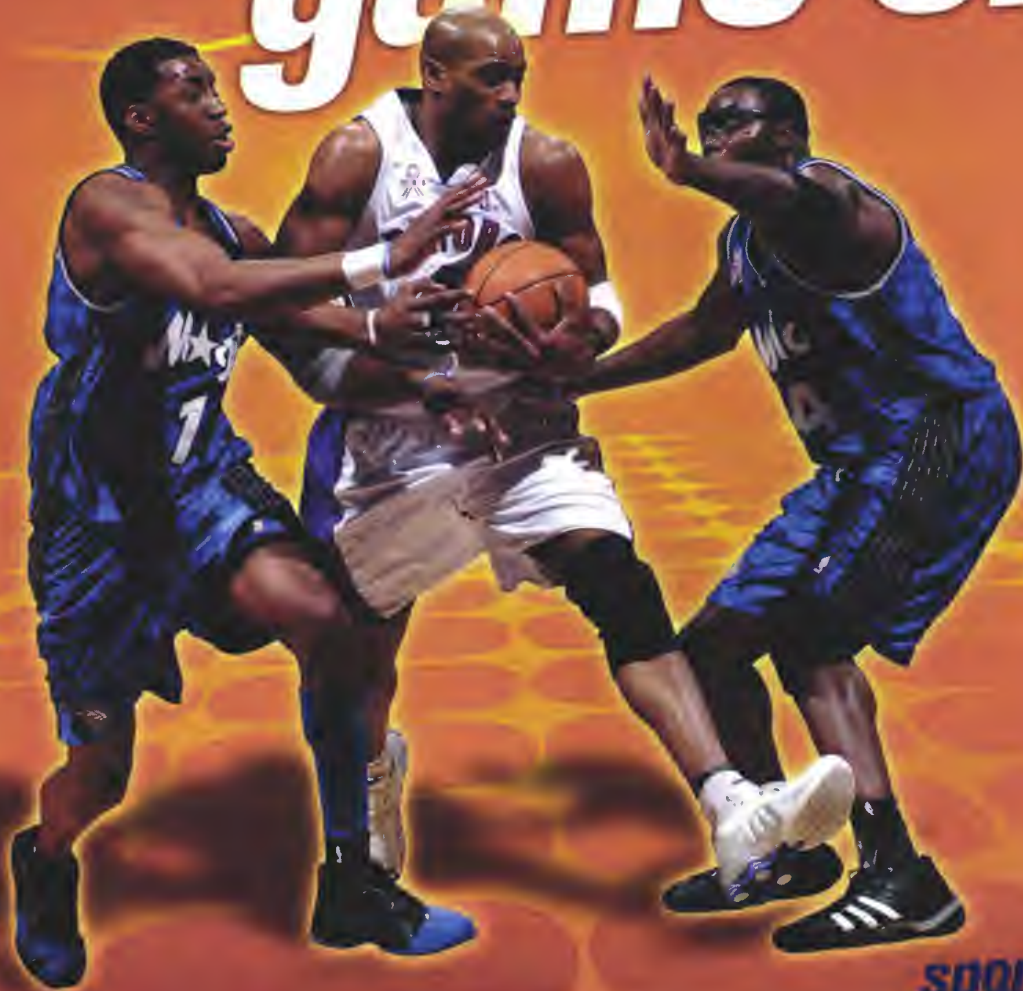
Congratulates the
WARRIORS



ConAgra
Foods
**HAWAI'I
BOWL**

ConAgra Foods Hawai'i Bowl 2002

get your game on



sports
iN DEMAND

With up to 40 out-of-market regular season games a week, you can see the games you want to watch. Follow your team with NBA LEAGUE PASS on digital cable.

\$179 Season Package
Call 625-8100 to order

Only on Digital Cable. Available on Oahu only. Some restrictions may apply.

OCEANIC
TIME WARNER
CABLE

Digital Channels 751-761

NBA.COM

iNDEMAND.COM

Blackout and other restrictions apply. May not be available in all areas. Programming subject to change. © 2002 iN DEMAND L.L.C. All Rights Reserved. iN DEMAND is a service mark of iN DEMAND L.L.C. The NBA and individual NBA member team identifications reproduced on this product are trademarks and copyrighted designs, and/or other forms of intellectual property, that are the exclusive property of NBA Properties, Inc. and the respective NBA member teams and may not be used, in whole or in part, without the prior written consent of NBA Properties, Inc. © 2002 NBA Properties, Inc. All rights reserved. All photos courtesy of NBA Entertainment/ROD TUREHNE



**FIRST YOU ARE
A PART OF IT**

**THEN IT BECOMES
A PART OF YOU**

When you join the Air Force Reserve, you have no idea how much you will change from that day forward. You don't expect the depth of pride that will come from committing to something larger than yourself. But your service will teach you what you are made of. This is a challenge that will take you above and beyond anything you ever expected. Visit our website or contact a recruiter to find out how to get started. **To learn more go to www.afreserve.com or call 800-257-1212**





Meet the Tulane Green Wave



75 **Mark Burgess**
OL, 6-5, 290, Fr.



80 **Chris Bush**
WR, 6-1, 195, So.



36 **Anthony Cannon**
LB, 6-0, 210, Fr.



6 **Nick Cannon**
QB, 6-3, 200, Fr.



51 **Willie Christian**
OL, 6-5, 255, Fr.



38 **Kris Coleman**
RB, 6-0, 243, Jr.



96 **Lonnie Crayton**
DT, 6-3, 280, Jr.



83 **Carl Davis**
WR, 5-11, 172, So.



24 **Damascus Davis**
WR, 6-0, 180, Fr.



27 **Joey Dawson**
DB, 6-2, 189, So.



85 **Floyd Dorsey**
DE, 6-0, 258, Sr.



62 **Brendon Drysdale**
OL, 6-1, 308, Jr.

Meet the Tulane Green Wave continues on page 63

A/C Warehouse
Proudly Supports
WARRIOR FOOTBALL




Mr. SLIM
MS series
Wall-Mounted AIR CONDITIONERS
Quiet, Cool & Effective

MITSUBISHI ELECTRIC

- A/C Warehouse 306-1990
- AC General Air Conditioning 833-5687
- Advanced Air Conditioning 847-4814
- Air Systems, Inc. 422-6333
- Aire Conditioner Shoppe 676-1455
- American Air Conditioning 847-0851
- D&D Air Conditioning 623-1335
- RMI Mechanical 422-5454
- Shobu's A/C 526-8068/247-2481
- SMAC Hawaii 484-0062



25 **James Dunn**
WR, 5-8, 172, Jr.



13 **Lynaris Elpheage**
CB, 5-9, 170, Jr.



16 **Chino Fontenetie**
RB, 5-10, 202, Jr.



18 **Terry Fontenot**
LB, 5-11, 212, Sr.



34 **Jeremy Foreman**
CB, 6-2, 164, Fr.



48 **Tye Graham**
TE/FB, 6-2, 245, Fr.



28 **Bart Grasso**
DB, 6-0, 182, Fr.



10 **Tommy Griffin, Jr.**
DB, 5-11, 190, Fr.



79 **Robert Hand**
OL, 6-6, 250, Fr.



**If 50% of the game is mental,
then we'll provide the reading material.**

From Warrior football to Wahine volleyball, our commitment to UH Athletics is just one of the ways we're bringing Hawaii the best sports coverage. Only the Honolulu Advertiser gives you local, national and international sports every day of the week. We cover the game like no one else can. Call 538-NEWS to subscribe.



The Honolulu Advertiser
HAWAII'S NEWSPAPER • honoluluadvertiser.com



Bob Cook,
"The Yellow Flag Ref":
fanatical about rules,
regulations and the
"Bloomin' Onion." ▼

"We got rules
here mister.
Where do you
think you are,
Outback Steakhouse?"

OUTBACK
STEAKHOUSE

NO RULES. JUST RIGHT.™

Waikiki, Oahu
808-951-6274

Waipo, Oahu
808-671-7200

Hawaii Kai, Oahu
808-396-7576

Kailua, Kona
808-326-2555

Kihei, Maui
808-879-8400

www.outback.com

Kahana, Maui
808-665-1822



Meet the Tulane Green Wave



41 **Wesley Heath**
LB, 6-0, 222, Jr.



49 **Stephen Hedemann**
TE, 6-3, 231, Sr.



21 **Brant Hocke**
RB, 5-8, 189, Sr.



88 **Bobby Hoover**
TE, 6-4, 252, So.



28 **Jovon Jackson**
RB, 5-11, 206, Fr.



43 **Quintin Jones**
FB, 6-0, 215, Fr.



11 **Derrick Joseph**
QB, 5-11, 187, Sr.



70 **Kass Kemper**
OL, 6-4, 288, Fr.



76 **Jimmy Kosienski**
OT, 6-7, 280, So.



87 **Jerome Landry**
TE, 6-4, 240, Fr.



7 **J.P. Losman**
QB, 6-3, 216, Jr.



31 **Sean Lucas**
CB, 5-11, 175, Fr.

Meet the Tulane Green Wave *continues next page*

Find the highest peaks.

The freshest powder.

The biggest waves.

Just never leave

luxury behind.

Introducing the

new Lexus GX 470.



While the GX has the rugged capability to take you to the most hard-to-reach places, luxury is never out of reach. A spacious leather-trimmed cabin with available third-row seating ensures a remarkably comfortable journey for up to eight occupants. Your sense of being inside a luxury sedan is heightened by the amazingly smooth, quiet ride, even over the roughest terrain. The GX is, after all, every bit a Lexus.

 **SERVCO LEXUS**
The Passionate Pursuit of Perfection.

HONOLULU: 650 Kapiolani Blvd., 54-LEXUS (545-3987)
MAUI: 445 Kele Street, Kahului, 877-4411

www.ServcoLexus.com

A SERVCO PACIFIC COMPANY



Meet the Tulane Green Wave



65 Lane Macaluso
DS, 6-2, 240, So.



66 Donald Madlock
OL, 6-4, 300, Fr.



2 Billy Don Malone
QB, 6-2, 190, Fr.



22 Gary Malone
WR, 6-1, 205, Fr.



47 Seth Marler
K/P, 6-0, 195, Sr.



39 Antonio Mason
LB, 6-0, 212, Fr.



99 Wallace Mateen
DL, 6-0, 282, So.



68 Chris McGee
OL, 6-4, 265, Fr.



19 Cletus McGee
WR, 6-1, 192, Fr.



31 Ian Miller
FB, 6-0, 220, Fr.



14 Adrian Mitchel
DB, 5-10, 185, Sr.



73 Joe Mitchell
OL, 6-3, 324, Jr.

Meet the Tulane Green Wave continues on page 67



BOC Gaspro President
Jim Webb

We're more than you think we are. Come and visit us.

At Gaspro, our customers are our #1 priority. We've been serving the people of Hawaii for over 90 Years. For your medical and industrial gases, welding, propane related equipment and safety needs, Gaspro Provides Solutions That Work.



9 Locations to serve you
 Honolulu 2305 Kam. Hwy. 842-2225
 Waipahu 95-150 Leoleo 671-5435 · Kapolei 91-102 Kaomi Lp. 682-4288
 Hilo 525 Kalaniana'ole Ave. 935-3341 · Kamuela Holomua Ctr. 885-8636
 Maui 365 Hanakai 877-0056 · Lahaina Honokowai Marketplace 661-1480
 Kauai 3990C Rice 245-6766 · Kona 74-5035C Qn. Kaahumanu Hwy. 329-7393



The Best Mix Of The 80's, 90's And Now



Happy Holidays
From
Hawaii's #1
Radio Group



COX
RADIO, INC.

CATCH OF THE DAY

(AND OTHER POST-GAME HIGHLIGHTS.)



From high altitude, high-style dining 30 stories above Waikīkī Beach to more casual dining at beachside, you'll find a combination of the finest cuisine, the most inspiring views, the most exciting entertainment, and the best values only at the restaurants and lounges of Sheraton Hotels in Waikīkī.

SHERATON WAIKIKI • 922-4422

Esprit Bar • Sand Bar • Ocean Terrace • Hanohano Room • Kau Kau Snack Bar

THE ROYAL HAWAIIAN • 931-7194

Mai Tai Bar • Surf Room • The Royal Beach Club Café

SHERATON MOANA SURFRIDER • 922-3111

Beach Bar • Beachside Café • Banyan Veranda • Ship's Tavern Bar

SHERATON PRINCESS KAIULANI • 922-5811

Princess Food Court • Momoyama • Pikake Lounge • Pikake Terrace

Outlets and hours of operation subject to change without notice.



SHERATON WAIKIKI



THE ROYAL HAWAIIAN
Waikiki



Sheraton
Moana Surfrider
WAIKIKI



Sheraton Princess Kaiulani



www.starwood.com/hawaii

Members of Starwood Hotels & Resorts Worldwide, Inc.





Meet the Tulane Green Wave



26 **Mewelde Moore**
RB, 6-1, 203, Jr.



8 **Nick Marcisse**
WR, 6-0, 180, Jr.



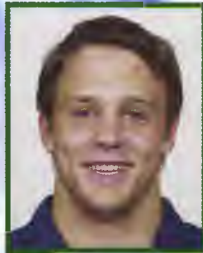
40 **Daniel Nevil**
LB, 6-1, 220, Jr.



15 **Terrence Peterson**
S, 5-11, 190, Fr.



32 **Brandt Quick**
LB, 6-1, 235, Jr.



95 **Michael Roberts**
DE, 6-3, 245, Fr.



64 **Derek Rogers**
OL, 6-5, 315, Fr.



98 **Brandon Rottmayer**
DL, 6-5, 257, So.



82 **Laine Sambrooks**
DL, 6-5, 255, So.



3 **Jeff Sanchez**
DB, 5-10, 175, Sr.



30 **Darren Sapp**
DB, 6-0, 185, So.



71 **Sephen Segari**
DE, 6-0, 207, Jr.



89 **Roxie Shelvin**
DL, 6-2, 285, Sr.



1 **Tristan Smith**
WR, 6-0, 180, So.



42 **Lyneal Strain**
WR, 5-8, 170, Fr.



44 **Beau Stubbs**
DB, 6-1, 180, Fr.



81 **Terrence Tarveer**
DL, 6-1, 270, Jr.



17 **Bubba Terranova**
WR, 6-3, 185, Fr.



54 **Marlon Tickle**
DL, 6-1, 290, Sr.



55 **Joe Traina**
OL, 6-3, 269, Fr.



72 **Matt Traina**
OL, 6-3, 267, Fr.



94 **Chris Washington**
DL, 6-2, 225, Sr.



53 **Chris Williams**
DE, 6-3, 225, So.



9 **Roydell Williams**
WR, 6-2, 183, Jr.



56 **Terry Woo**
LB, 5-7, 220, Jr.



20 **Bruce Youmans**
DB, 5-10, 179, Fr.



60 **Seth Zaunbrecher**
OL, 6-4, 290, Sr.



Meet the Hawai'i Warriors



79 Keali'i Aquiar
DL, 6-0, 310, Jr.



9 Kainoa Akina
QB, 5-11, 193, So.



83 Mike Akiu, Jr.
WR, 5-8, 164, Fr.



93 Houston Ala
DL, 6-1, 250, Jr.



46 Keani Alapa
LB, 6-0, 221, Jr.



55 Alapa'i Andrews
OL, 6-1, 298, Sr.



47 Justin Ayat
KS, 5-11, 205, So.



1 Mike Bass
RB, 5-6, 158, So.



81 Omar Bennett
WR, 5-11, 178, Sr.



26 Ha'aheo Bento
KS, 5-11, 194, So.



13 Keith Bhonapha
DB, 5-9, 197, Sr.



34 Ikaika Blackburn
LB, 5-10, 212, So.



6 Michael Brewster
RB, 5-6, 176, So.



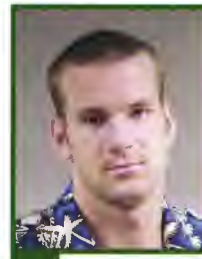
31 Lamar Broadway
DB, 5-11, 173, Fr.



54 Chris Brown
LB, 6-1, 255, Sr.



41 Tyrone Brown
LB, 6-1, 202, So.



23 Sean Butts
DB, 6-3, 202, Sr.



14 Timmy Chang
QB, 6-2, 191, So.



19 Jeremiah Cockheran
WR, 6-0, 193, Jr.



18 Justin Colbert
WR, 5-8, 170, Sr.



58 Laanui Correa
DL, 6-5, 264, Sr.



25 Josiah Cravalho
DB, 5-10, 188, So.



51 Ikaika Curnan
LB, 5-11, 210, Fr.



52 Garrett Dearing
DL, 6-4, 239, Fr.



82 Ross Dickerson
WR, 5-10, 174, Fr.



66 Brandon Eaton
OL, 6-3, 301, Fr.



37 Jonathan Ekno
OL, 6-5, 300, So.



37 Abraham Elimimian
DB, 5-10, 173, So.



90 Tala Esera
DL, 6-3, 265, Fr.



59 Derek Faavi
OL, 6-0, 266, Fr.



Meet the Hawai'i Warriors



39 **Pesefea Fiaseu, Jr.**
RB, 5-9, 248, Fr.



86 **Denny Flanagan**
WR, 6-0, 179, Fr.



53 **Lui Fuata**
OL, 6-2, 315, Sr.



99 **Lui Fuga**
DL, 6-1, 301, Jr.



22 **Josh Galeai**
RB, 5-11, 236, Sr.



87 **Kanale George**
WR, 6-2, 193, So.



17 **David Gilmore**
DB, 6-0, 197, Jr.



88 **Neal Gossett**
WR, 5-10, 177, Sr.



48 **Patrick Lavar Harley**
LB, 6-0, 220, So.



21 **Clifton Herbert**
WR, 5-8, 157, Jr.



36 **Omega Hogan**
DB, 5-10, 176, Fr.



28 **Cameron Hollingsworth**
DB, 6-0, 176, Fr.



70 **Wayne Hunter**
OL, 6-6, 299, Jr.



4 **Nate Ilaoa**
WR, 5-9, 204, Fr.



31 **Daniel Inferrera**
WR, 6-0, 189, Fr.



11 **Kevin Jackson**
LB, 6-5, 229, Jr.



35 **Patrick Jenkins**
DB, 6-0, 199, Fr.



75 **Chad Kahale**
OL, 6-1, 337, So.



77 **Shayne Kajioka**
OL, 6-3, 308, Jr.



56 **Chad Kalilimoku**
LB, 5-11, 243, Jr.



30 **Kila Kamakawiwo'ole**
DB, 6-3, 231, Fr.



60 **Marques Kaonohi**
OL, 6-1, 6-1, 252, Fr.



5 **Chad Kapanui**
DB, 6-0, 205, So.



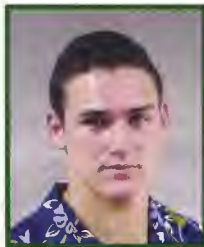
67 **Phil Kauffman**
OL, 6-1, 283, So.



43 **Johnathan Kauka**
RB, 6-0, 209, Sr.



27 **Greg Kleidon**
P, 6-0, 190, Sr.



84 **Britton Komine**
WR, 5-9, 184, So.



34 **Nainoa Kuna**
WR, 5-11, 200, Fr.



1 **Travis LaBoy**
DL, 6-4, 249, Jr.



68 **Kahai LaCount**
OL, 6-2, 294, Fr.

Meet the Hawai'i Warriors continues on page 73

ARTISAN
HOME ENTERTAINMENT

ADD THESE TOP PERFORMERS TO YOUR DVD ROSTER!



R
FOR LANGUAGE



NOT RATED



R
FOR STRONG
VIOLENCE AND
LANGUAGE

Basic Instinct
Belly
Glengarry Glen Ross
National Lampoon's Van Wilder
Total Recall
Rambo Trilogy
Reservoir Dogs™



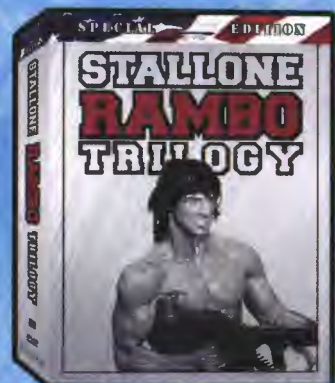
R
FOR STRONG VIOLENCE AND
SENSUALITY, AND FOR DRUG
USE AND LANGUAGE



R
FOR STRONG VIOLENCE,
LANGUAGE, SEXUALITY
AND DRUG USE



R



R

Warm mahalos to everybody who supported the 2002 Hawai'i Bowl.



Title Sponsor:

ConAgra Foods

Presenting Sponsors:

Heineken

Outback Steakhouse

Sheraton Hotels in Waikiki

The Honolulu Advertiser

Supporting Sponsors:

All Star Hawai'i

Big Island Candies

Chevron

Cox Radio Stations Hawaii

Hawaii Food Industry Association

Hilo Hattie

K5 The Home Team

KKEA 1420 AM

Lion's Coffee

Murphy's Bar & Grill

News 8

Noh Foods

Oceanic Time Warner

Papa John's Pizza

Pepsi

Paradise Beverages

Royal Kona Coffee

Servco Toyota

Sodexo

Starr Seigle Communications

Volume Services

Weil & Associates

Xerox

Corporate Ticket Packages:

Anheuser-Busch

Better Brands

Central Pacific Bank

Colors on Parade

Familian Northwest

BOC/Gaspro

HHSAA

Hardware Hawaii

Kobayashi Sugita & Goda

Koga Engineering

Schuler Homes

Territorial Savings & Loan

Verizon Hawaii

Waimana Enterprises



Remember when this was all you had to know about saving energy?

You probably didn't even know that electricity was something you pay for, and you certainly didn't know anything about energy shortages. Today, you can help the environment and save money just by using energy efficient light bulbs, like SYLVANIA DULUX® compact fluorescents.

Sure, they cost a little more, but sometimes you have to spend a little to save a lot.



SEE THE WORLD IN A NEW LIGHT

SYLVANIA



For your free Lighting Guide call 1/800-LIGHTBULB or visit www.sylvania.com.



Meet the Hawai'i Warriors



94 **Abu Ma'afala**
DL, 6-2, 268, Fr.



50 **Anipati Mailo**
LB, 6-2, 214, So.



16 **Preston Maloney**
QB, 6-1, 185, Fr.



15 **Lono Manners**
DB, 5-11, 154, Fr.



9 **Matt Manuma**
DB, 6-1, 205, So.



65 **Vince Manuwai**
OL, 6-2, 309, Sr.



49 **Mat McBriar**
P, 6-0, 221, Sr.



3 **Kelvin Millhouse, Jr.**
DB, 6-1, 205, Jr.



36 **Kurt Milne**
P, 5-11, 199, Fr.



48 **Nolan Miranda**
KS, 5-8, 162, Fr.



24 **Thero Mitchell**
RB, 5-10, 210, Sr.



30 **Michael Miyashiro**
WR, 5-6, 147, Jr.



45 **Tanuvasa Moe**
LB, 5-11, 218, Fr.



69 **Uriah Moenoa**
OL, 6-3, 327, So.



2 **Kyle Mowry**
DB, 6-0, 186, Fr.



29 **Kilinahe Noa**
LB, 6-0, 213, So.



2 **Chad Owens**
WR, 5-9, 177, So.



40 **Kaipō Patoc**
DL, 6-2, 230, Fr.



24 **Kenny Patton**
DB, 6-0, 170, Fr.



33 **Hyrum Peters**
DB, 5-8, 188, Jr.



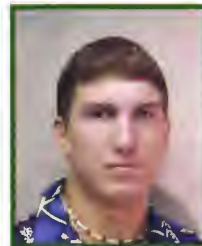
42 **Leonard Peters**
DB, 6-1, 174, Fr.



26 **Se'e Poumele**
WR, 5-9, 179, Fr.



98 **Mel Purcell III**
DL, 6-5, 227, Fr.



12 **Jeffrey Rhode**
QB, 6-5, 243, Fr.



92 **Lance Samuseva**
DL, 5-11, 290, Jr.



71 **Ryan Santos**
OL, 6-5, 320, So.



64 **Samson Satele**
OL, 6-2, 289, Fr.



97 **Isaac Sopoaga**
DL, 6-3, 315, Jr.



96 **Robertson Sosene**
DL, 6-2, 296, Jr.



15 **Sean Stennis**
WR, 5-11, 153, Fr.

Meet the Hawai'i Warriors continues on page 74



Meet the Hawai'i Warriors



85 **Bryant Stevens**
WR, 6-2, 182, So.



11 **Ryan Stickler**
QB, 6-2, 218, Fr.



80 **Mark Tate**
WR, 6-1, 212, So.



91 **Viliami Taufa**
LB, 6-0, 258, Sr.



57 **Peivi Tauilili**
DL, 6-0, 258, Fr.



10 **Pisa Tinoisamoa**
LB, 6-0, 218, Sr.



72 **Dane Uperesa**
OL, 6-4, 305, Fr.



89 **Marcus Weems**
WR, 6-3, 178, Fr.



38 **Gerald Welch**
WR, 5-7, 204, Jr.



20 **John West**
RB, 5-10, 180, Jr.



8 **Jason Whieldon**
QB, 6-1, 187, Jr.



55 **James Whyte**
LB, 6-2, 222, Fr.



35 **Lamont Williams**
WR, 6-0, 163, Fr.



95 **Colin Wills**
DL, 6-1, 244, Sr.



7 **Shawn Withy-Allen**
QB, 6-4, 219, Sr.



49 **Laiana Wong**
LB, 5-10, 213, Fr.



27 **Gary Wright**
DB, 5-10, 201, Jr.



44 **Matt Wright**
LB, 6-1, 221, Sr.

FREE PICKS!!

www.sharkpix.com

XH1733

Come downtown and discover a Traditional Irish Saloon...

WHERE EVERY DAY IS ST. PATRICK'S DAY!

Open for lunch and dinner
Mon.-Fri. 11:30 AM - 2 AM
Sat. 11 AM - 2 AM
Live Sports via Satellite

MURPHY'S
BAR & GRILL

2 Merchant Street • 531-0422 (Corner of Merchant and Nuuanu)



Great reception.



Our network tests prove that Verizon Wireless outperforms every other national carrier.

So it's no wonder more people choose Verizon Wireless, America's #1 wireless company.



TEST the BEST

VERIZON WIRELESS HAS THE BEST NATIONAL WIRELESS NETWORK IN AMERICA. But don't just take our word for it. If you're not 100% satisfied during your first 15 days, simply return your phone and pay for only the service you've used. It's all a part of our Worry Free Guarantee to you.

CALL 1.800.2 JOIN IN

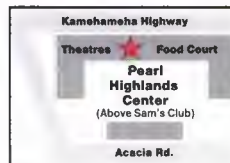
CLICK verizonwireless.com

VISIT any of our stores

VERIZON WIRELESS COMMUNICATIONS STORES



HONOLULU
M-F 9-6; Sat 9-5; Sun 11-5
Pacific Guardian Tower
1440 Kapiolani Blvd.
973-4884



PEARL CITY
M-F 9:30-8; Sat 9:30-6; Sun 11-5
Pearl Highlands Center
1000 Kamehameha Hwy.
456-0687

BUSINESS SALES: 544-8911 EXISTING CUSTOMERS CALL: 1-800-922-0204



Important Consumer Information: Best network claim based on results of our reliability studies and network advantages. See www.verizonwireless.com/bestnetwork for details. See Worry Free Guarantee brochure and our Return/Exchange policy for full details. 15-day return policy available at Verizon Wireless Communications Stores and participating retailers. Service not available in all areas. ©2002 Verizon Wireless.



First Team All-American



ConAgra Foods' team of winning brands is top rated in quality, taste and value. No.1 turkey: Butterball[®]. No.1 meat snack: Slim Jim[®]. No.1 dairy topping: Reddi-wip[®]. In all, our roster includes many of America's most trusted brands from Parkay[®] to Banquet[®] to Healthy Choice[®]. Every one a First Team All-American.

We're proud of our all-star line up and equally proud to be the official sponsor of the inaugural ConAgra Foods Hawai'i Bowl. Enjoy the game!

**ConAgra
Foods[®]**

We set America's table at home and away

©2002 ConAgra Foods, Inc.

NYSE:CAG www.conagrafoods.com

¹Source: AC Nielsen Homescan, 2001 ²Source: AC Nielsen Homescan, 52 wks ending 11/23/02, GoodMark Image & Tracking Study, Nov. 2001 (Awareness source) ³Source: Latest IRI data for 52 wks.