



# Ballinleenty Townland, Co. Tipperary

Search for a townland, subtownland, civil parish, barony or county. [Co. Tipperary](#) → [Clanwilliam](#) → [Clonpet Civil Parish](#) → [Tipperary Rural Electoral Division](#) → [Ballinleenty](#)

Ballinleenty is in the Electoral Division of [Tipperary Rural](#), in Civil Parish of [Clonpet](#), in the Barony of [Clanwilliam](#), in the County of [Tipperary](#)

The Irish name for Ballinleenty is Baile an Líontaigh (Translation seems to suggest it is filled in land as the word Líontaigh is related to the one for a fishing net etc. and suggests the filling in was done in stages aka the mesh on a fishing net!!) This is my own rough translation – not knowing the area at all.

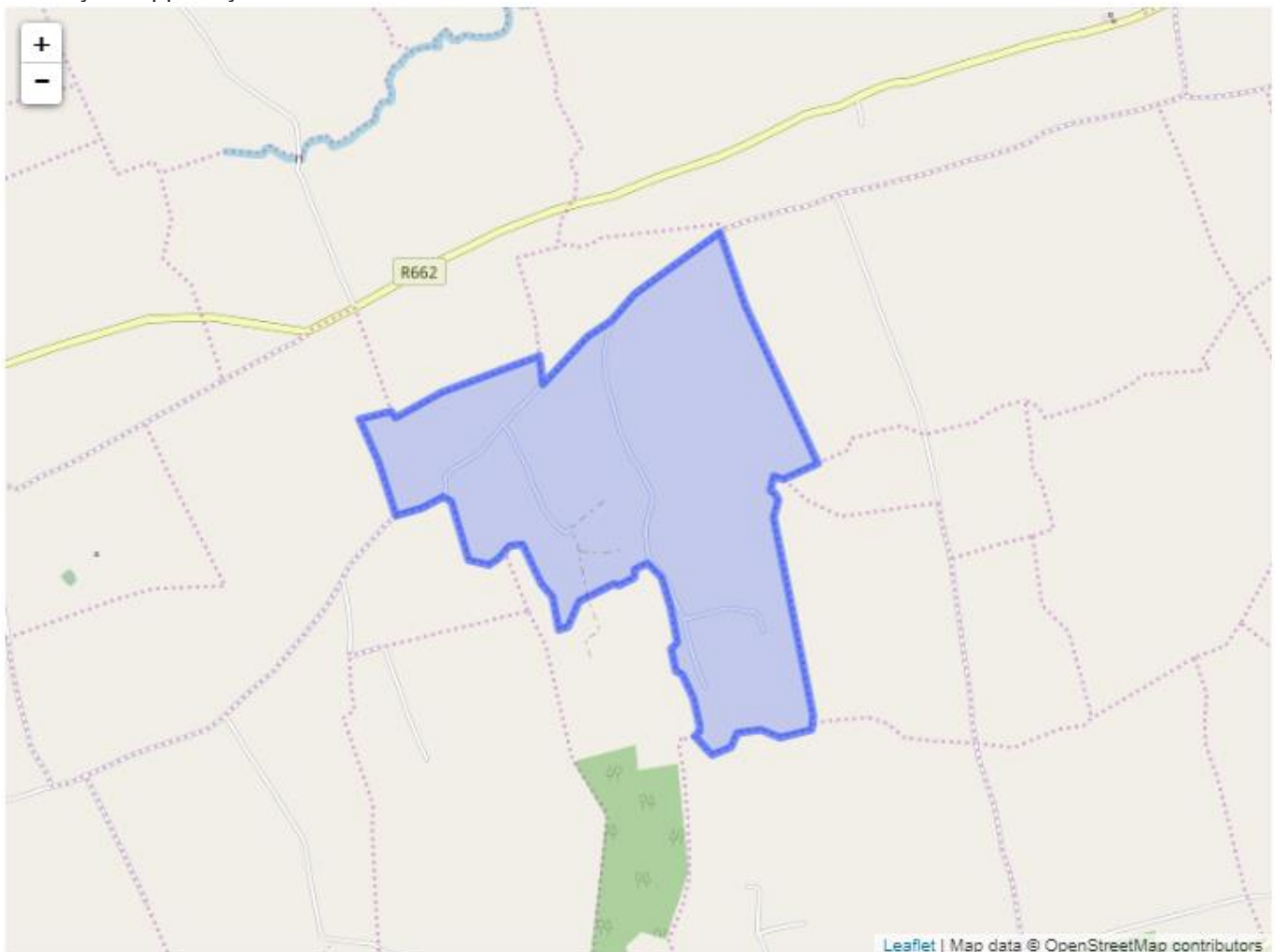
(Dick)

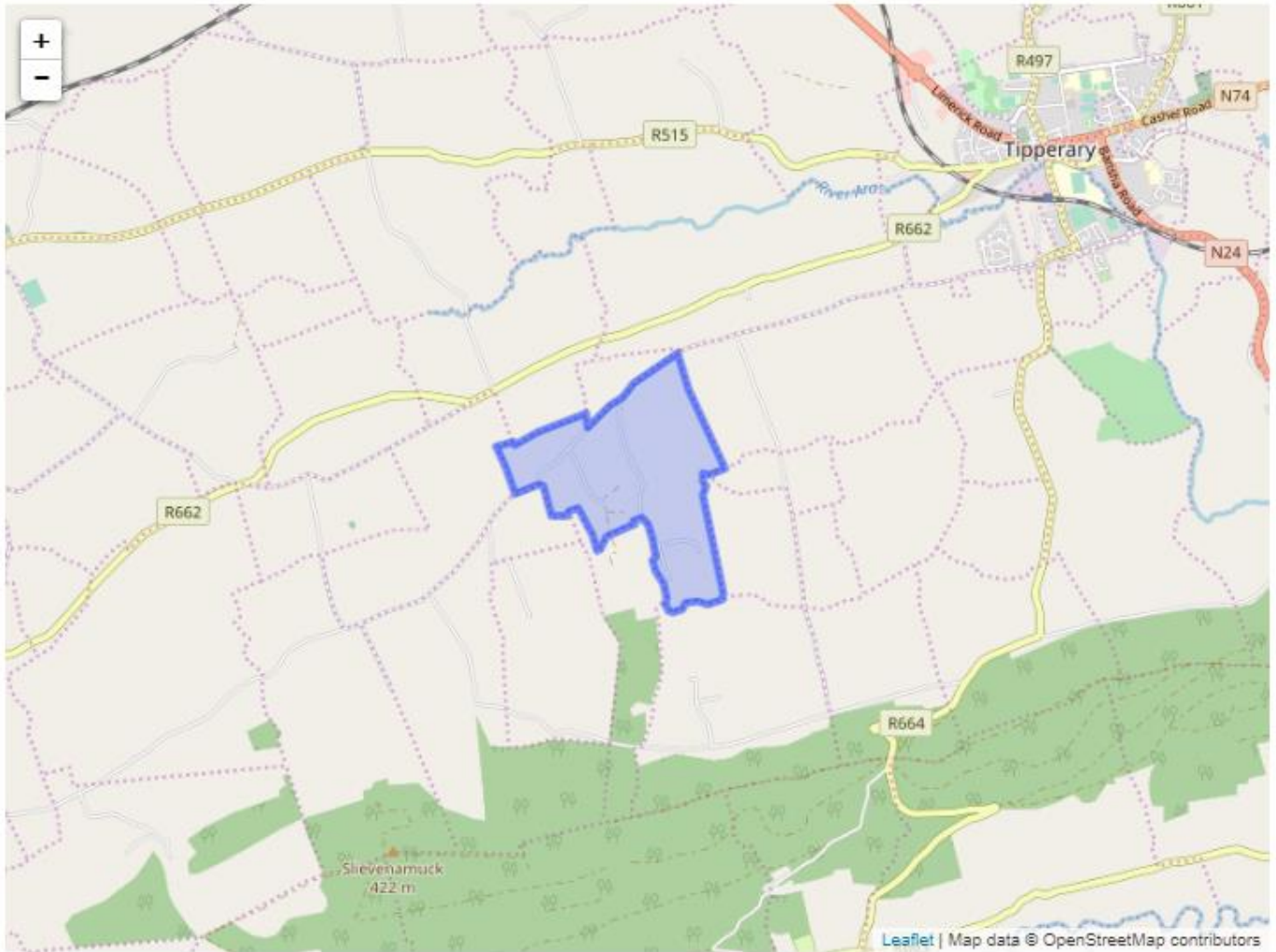
Ballinleenty is on Logainm.ie: [Ballinleenty](#).

## Map

It is located at 52° 27' 6" N, 8° 12' 22" W.

In the first map here you can see the actual shape of the townland close-up. The second map shows its proximity to Tipperary Town





Leaflet | Map data © OpenStreetMap contributors

## Area

Ballinleenty has an area of:

- 1,513,049 m<sup>2</sup> / 151.30 hectares / 1.5130 km<sup>2</sup>
- 0.58 square miles
- 373.88 acres / 373 acres, 3 roods, 21 perches

Nationwide, it is the 17764th largest townland that we know about

Within Co. Tipperary, it is the 933rd largest townland

## Borders

Ballinleenty borders the following other townlands:

- [Ardavullane](#) to the west
- [Ardloman](#) to the south
- [Ballynahow](#) to the west
- [Breansha Beg](#) to the east
- [Clonpet](#) to the east
- [Gortagowlane](#) to the north
- [Killea](#) to the south
- [Lackantedane](#) to the east
- [Rathkea](#) to the west

# Subtownlands

We don't know about any subtownlands in Ballinleenty.

## Genealogy / Ancestry / Records Search

Curious to see who lived in Ballinleenty in the past? Maybe even seeing scans of their handwritten census returns?

- [Search the 1911 Irish Census for Ballinleenty](#)
- [Search the 1901 Irish Census for Ballinleenty](#)
- [Search Griffith's Valuation \(1847-1864\) for Ballinleenty](#)

## OpenStreetMap

Ballinleenty was added to OpenStreetMap on 30 Oct 2015 by Teester.

| [Download Data](#) | [How up-to-date is Townlands.ie?](#) | [Who's mapping townlands?](#) | [Townland mapping activity](#) | [Townland Index](#) | [Help add Logainm data to OSM](#) | [Maps](#) | Last update: Feb. 14, 2020, 8:44 a.m.

Source: <https://www.townlands.ie/tipperary/clanwilliam/clonpet/tipperary-rural/ballinleenty/>



# Clonpet Townland, Co. Tipperary

Search for a townland, subtownland, civil parish, barony or county.

[Co. Tipperary](#) → [Clanwilliam](#) → [Clonpet Civil Parish](#) → [Tipperary Rural Electoral Division](#) → [Clonpet](#)

- [Map ↓](#)
- [Area ↓](#)
- [Bordering Townlands ↓](#)
- [Subtownlands ↓](#)
- [Records Search ↓](#)
- [OpenStreetMap ↓](#)

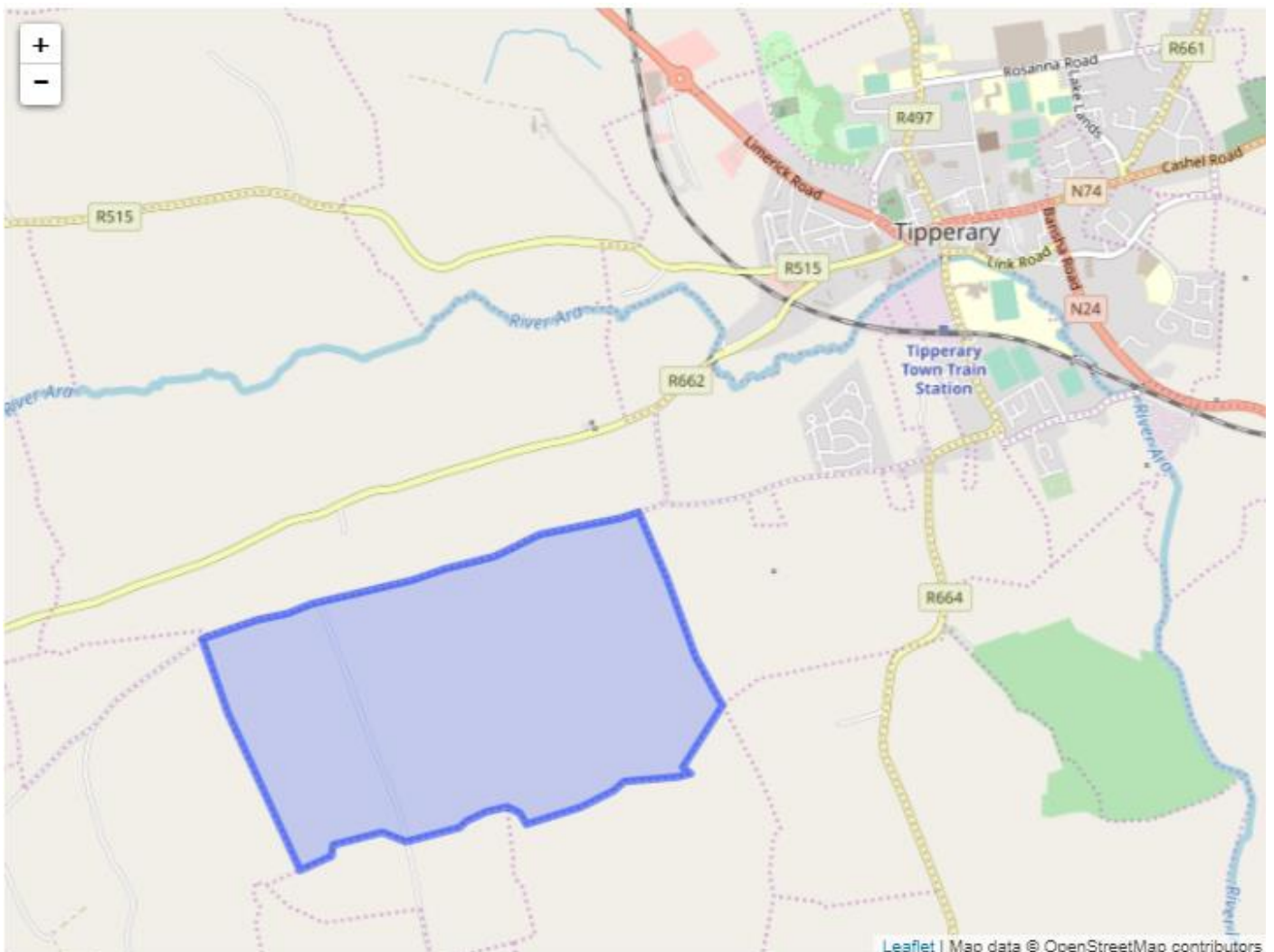
Clonpet is in the Electoral Division of [Tipperary Rural](#), in Civil Parish of [Clonpet](#), in the Barony of [Clanwilliam](#), in the County of [Tipperary](#)

The Irish name for Clonpet is Cluain Peata (The meadow of the Pet)

Clonpet is on Logainm.ie: [Clonpet](#).

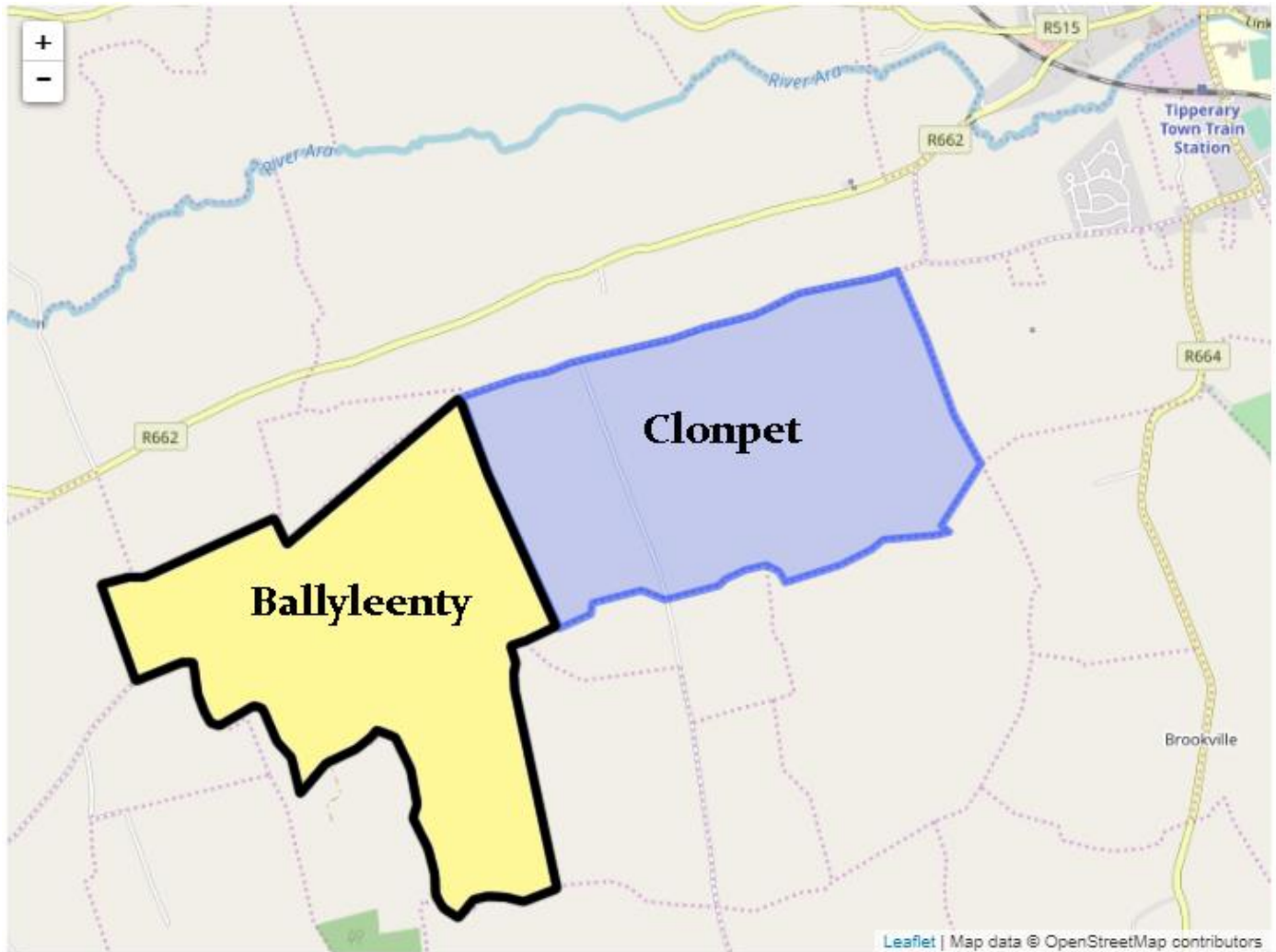
## Map

It is located at 52° 27' 29" N, 8° 11' 14" W.





The following map shows the townlands of Ballyleenty and Clonpet side-by-side. You can see how families from one townland can be connected to those in another. These townlands, like many in Ireland are not very large – many of them being no bigger than what we refer to here as “a large farm!”



## Area

Clonpet has an area of:

- 1,560,704 m<sup>2</sup> / 156.07 hectares / 1.5607 km<sup>2</sup>
- 0.60 square miles
- 385.66 acres / 385 acres, 2 roods, 25 perches

Nationwide, it is the 17015th largest townland that we know about

Within Co. Tipperary, it is the 888th largest townland

## Borders

Clonpet borders the following other townlands:

- [Ballinleenty](#) to the west
- [Ballynilard](#) to the north
- [Breansha Beg](#) to the south
- [Breansha More](#) to the east
- [Coolnaherin](#) to the east
- [Gortagowlane](#) to the west
- [Moanreagh](#) to the east

# Subtownlands

We don't know about any subtownlands in Clonpet.

## Genealogy / Ancestry / Records Search

Curious to see who lived in Clonpet in the past? Maybe even seeing scans of their handwritten census returns?

- [Search the 1911 Irish Census for Clonpet](#)
- [Search the 1901 Irish Census for Clonpet](#)
- [Search Griffith's Valuation \(1847-1864\) for Clonpet](#)

## OpenStreetMap

Clonpet was added to OpenStreetMap on 30 Oct 2015 by Teester.

[Copyright](#) | [Download Data](#) | [How up-to-date is Townlands.ie?](#) | [Who's mapping townlands?](#) | [Townland mapping activity](#) | [Townland Index](#) | [Help add Logainm data to OSM](#) | [Maps](#) | Last update: Feb. 22, 2020, 8:20 a.m.