



# Drive Resilient Operations with **S/4HANA Maintenance Management** 2021 Release Highlights

PUBLIC

**ASUG**

THE BEST RUN **SAP**

# Disclaimer

The information in this presentation is confidential and proprietary to SAP and may not be disclosed without the permission of SAP. Except for your obligation to protect confidential information, this presentation is not subject to your license agreement or any other service or subscription agreement with SAP. SAP has no obligation to pursue any course of business outlined in this presentation or any related document, or to develop or release any functionality mentioned therein.

This presentation, or any related document and SAP's strategy and possible future developments, products and or platforms directions and functionality are all subject to change and may be changed by SAP at any time for any reason without notice. The information in this presentation is not a commitment, promise or legal obligation to deliver any material, code or functionality. This presentation is provided without a warranty of any kind, either express or implied, including but not limited to, the implied warranties of merchantability, fitness for a particular purpose, or non-infringement. This presentation is for informational purposes and may not be incorporated into a contract. SAP assumes no responsibility for errors or omissions in this presentation, except if such damages were caused by SAP's intentional or gross negligence.

All forward-looking statements are subject to various risks and uncertainties that could cause actual results to differ materially from expectations. Readers are cautioned not to place undue reliance on these forward-looking statements, which speak only as of their dates, and they should not be relied upon in making purchasing decisions.



# Agenda



## Maintenance Management SAP S/4HANA 2021

---



### Asset Management Portfolio Overview

---



### New Phase Model Approach

---



### Innovations in Maintenance Planning

---



### Innovations in Maintenance Execution

---



### Q&A

---



---

**Rachel Romanoski**

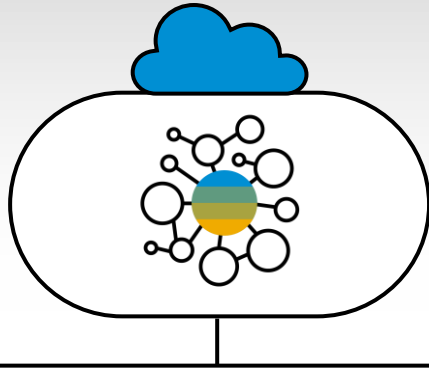
**Solution Management  
Asset & Service  
Management**

---

# SAP Digital Supply Chain Solutions for Operate

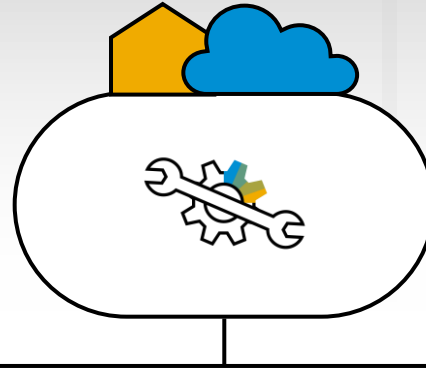
Connect Assets, People and Processes Across the Enterprise and Networks

## Intelligent Asset Management



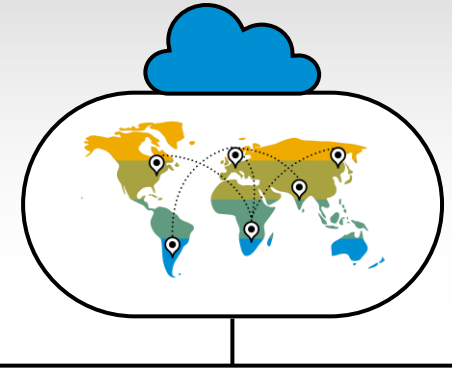
### SAP Asset Performance Management

Risk and Reliability Management,  
Predictive Maintenance & IoT



### SAP Maintenance and Service Operations

S/4HANA Maintenance and Service  
Field Service Management  
Resource Scheduling and Mobile Applications

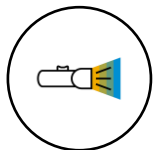


### SAP Asset Intelligence Network

Digital Content and Maintenance  
Services Collaboration



Connect with new collaborative networks



Connect assets with Industry 4.0 for real-time insights

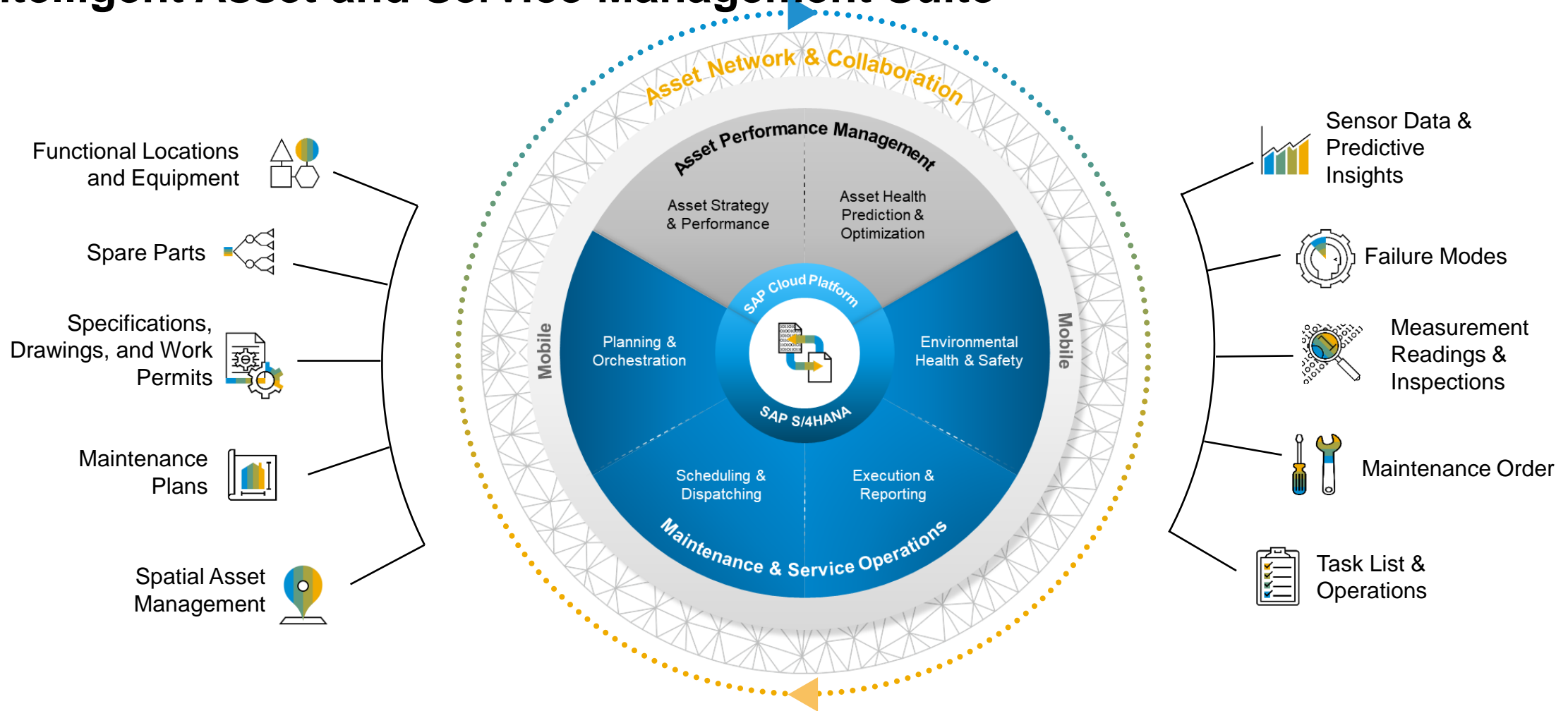


Connect strategy, planning and execution processes



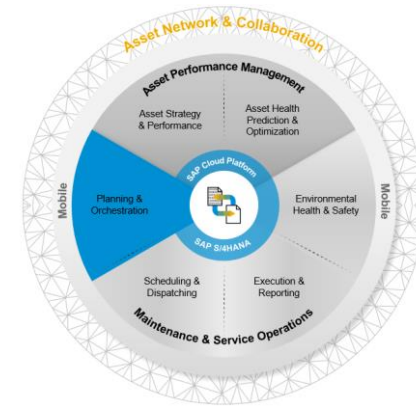
Connect operations across the supply chain and enterprise

# Intelligent Asset and Service Management Suite



# Maintenance & Service Operations

## Planning & Orchestration



**Maintain Asset master data** for operations including; maintenance plans, task lists, equipment characteristics, and spatial data



Leverage **planning buckets** defined by scope to effectively manage maintenance and service backlog



**Screen demand** and **evaluate work priority** or task deferrals with risk-based assessments.



**Build work package** to plan activities in detail, including time, material, tools, safety permits and documentation



**Orchestrate order readiness** optimized coordination between procurement and other logistic support teams



# Maintenance & Service Operations

## Scheduling & Dispatching



**Schedule** Maintenance and Service, identify capacity bottlenecks and level **work center utilization**



**Optimize work and resource** schedules using advanced rules, automatic routing and scheduling



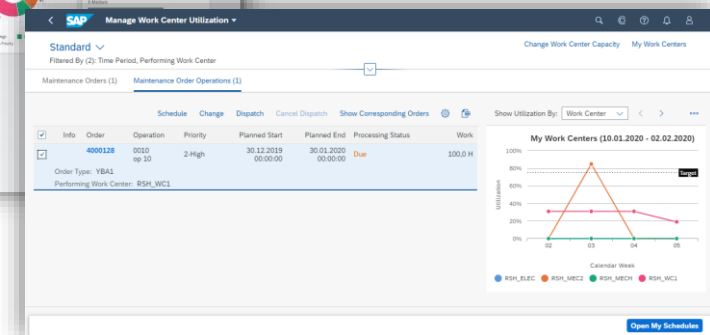
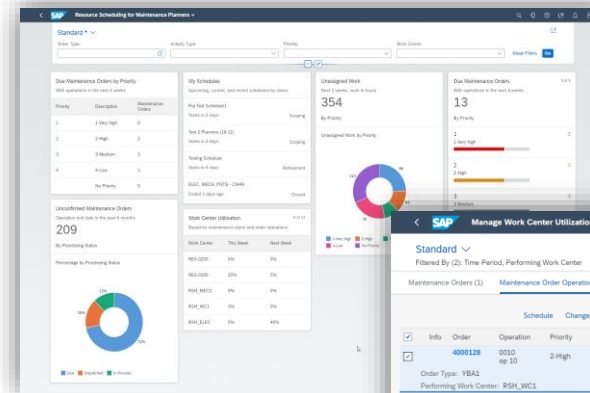
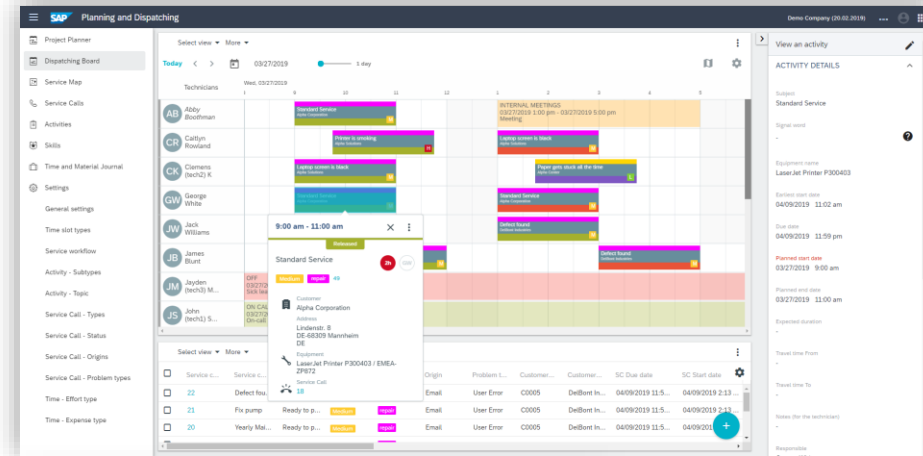
**Dispatch** in real time to optimally match work to technician availability and skills



Monitor schedule compliance metrics of **planned vs actual** work completed

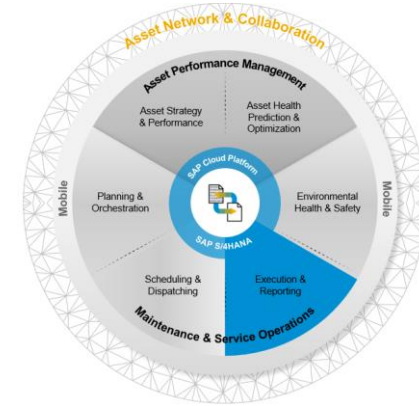


Intelligently source and manage third party resources through **Crowd Sourcing** and Partner Collaboration

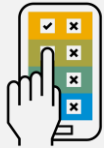


# Maintenance & Service Operations

## Execution & Reporting



Manage and process all work types including work request and orders, inspection rounds and checklists



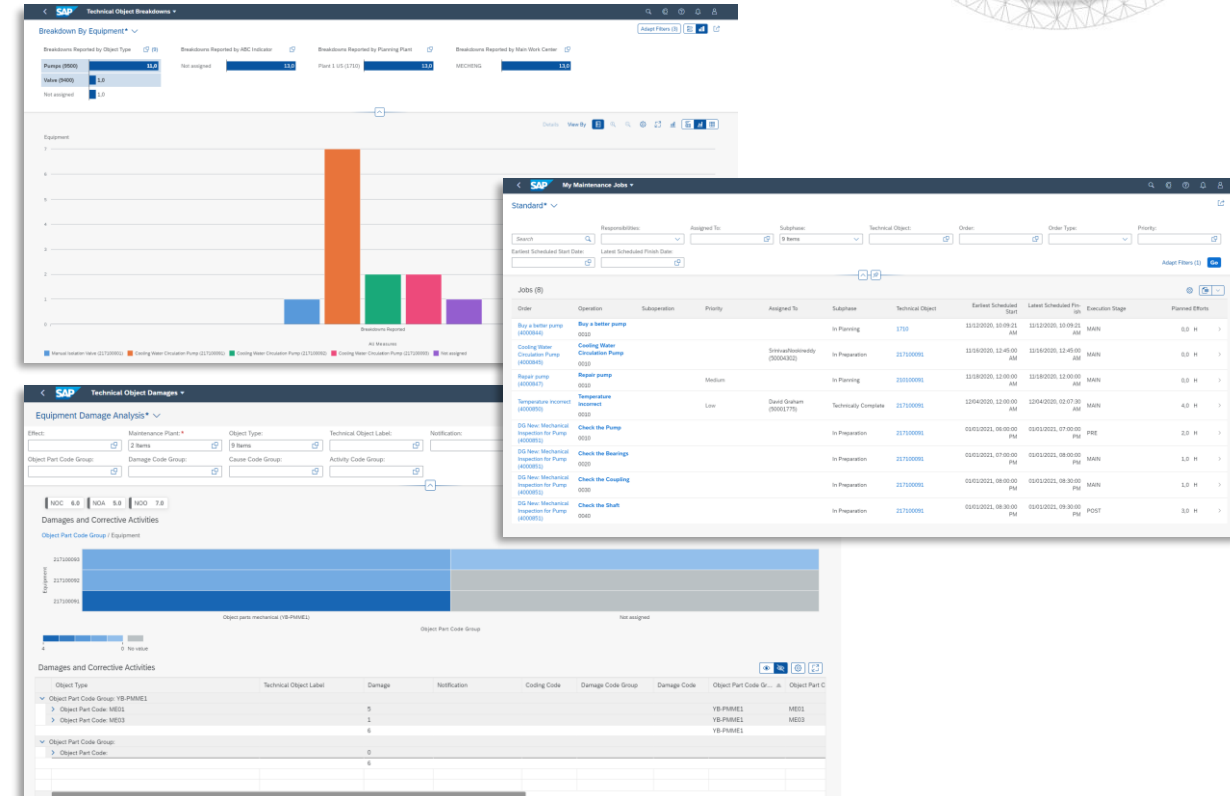
Capture and track **work history**, **failure modes**, labor time and materials consumed.



Embedded **real-time costing** and analytics monitor compliance to maintenance budget



Identify poor performing assets to **continuously improve** maintenance strategies





# Maintenance & Service Operations

## Environmental, Health & Safety



Provide a centralized solution to track all types of incidents, investigation and **corrective actions**



Enable an end-to-end process for identifying and dealing with all manner of **hazards and risks**



Central repository for all **compliance requirements** from enterprise down to specific equipment



Provide an end to end process to create **execute and monitor change** effectively within an organization

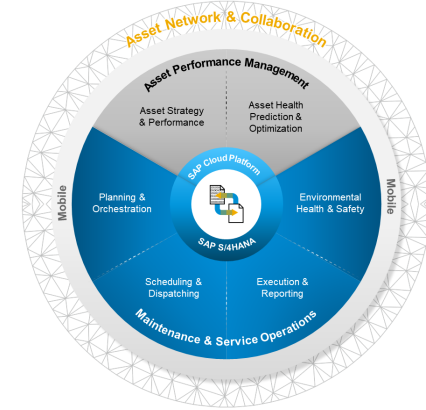


Full electronic support for controlling hazardous work using **permits and isolation** procedures

Urgency	Priority	Descr	Description	Tech. Object	Start Date	Start Time	WkCtr	Class	Person Resp	WIP Phase	Work Permit
2-High			Pump shaft replacement	210100091	18.04.2017	00:00:00		Mechanics			
1-Very high			Pump shaft replacement	210100093	04.10.2017	00:00:00		Mechanics			2000200
3-Medium			Pump leaking onto skid, just a drip	10000547	19.10.2017	00:00:00		Mechanical Team			
3-Medium			Pump leaking onto skid, just a drip	10000547	19.10.2017	00:00:00		Work Centre 'Mechanics'			
			Pump maintenance	210100093	07.11.2017	00:00:00		Mechanics			2000300

# Maintenance & Service Operations Spatial Asset Management\*

## Solutions in Scope: SAP Spatial Asset Management



Seamlessly integrate with GIS and business spatial data providing **end-to-end spatial workflows**



Move from Alphanumeric to Spatial and improves efficiency by **driving business transactions from a Map** from desktop or mobile device



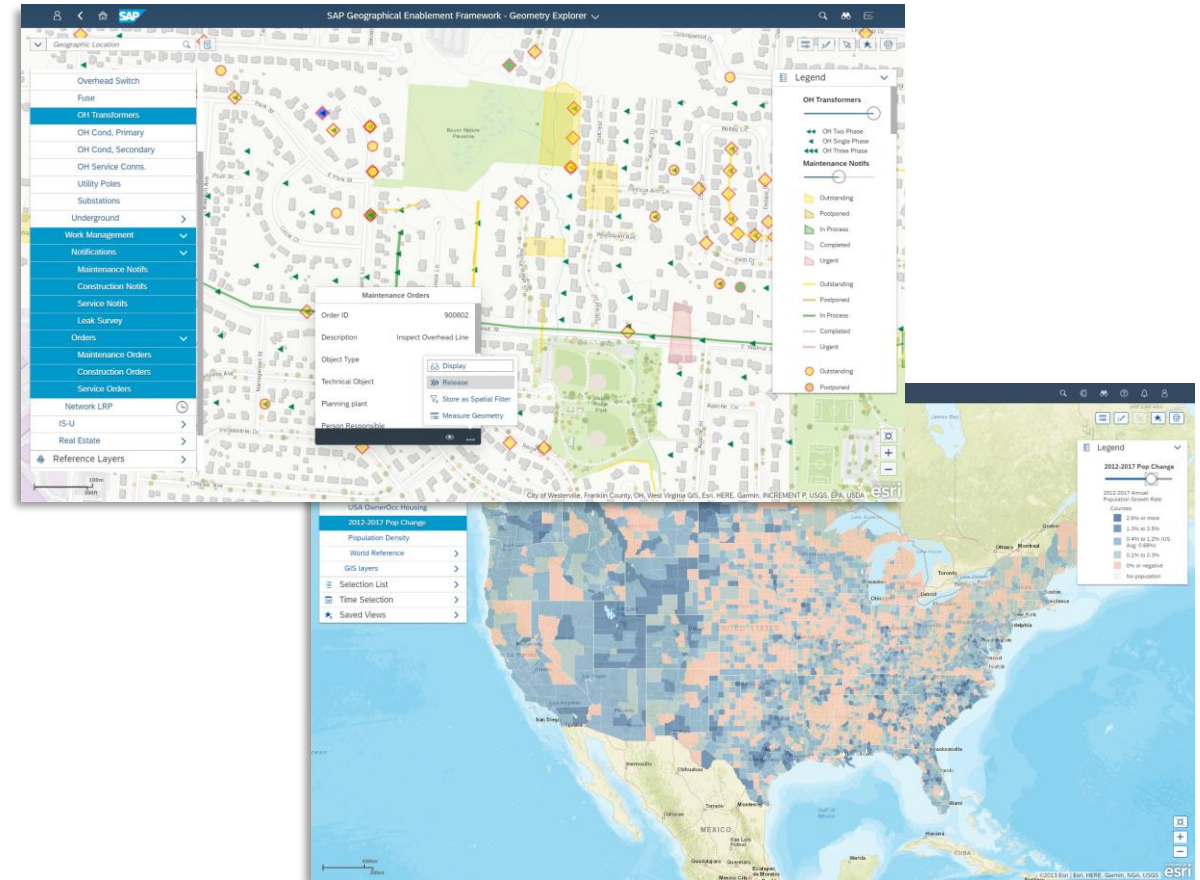
**Maximize overall planning and worker efficiency** by capturing geospatial and contextual information such as markers, offsets, and reference patterns



**Dynamic segmentation** with multiple sets of attributes associated with any portion of an existing linear feature independently of where it begins or ends

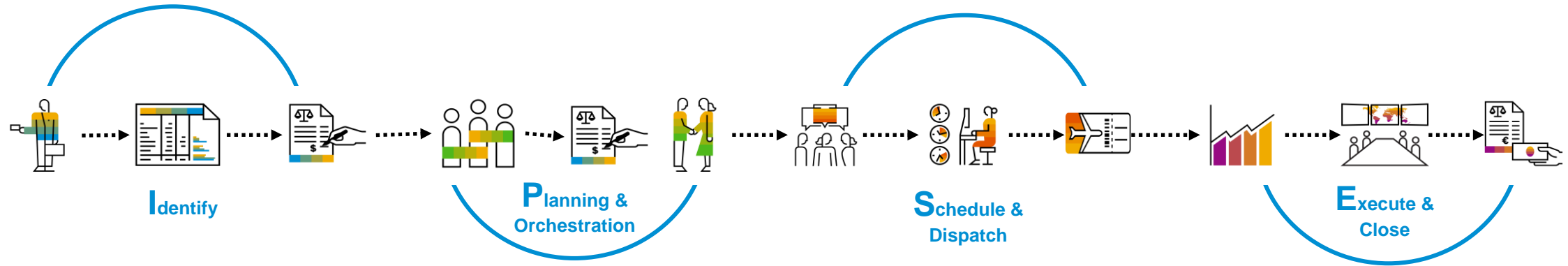


Use **a linear referencing method** as a mean to describe and locate a position along the length of the linear asset.



\*New Solution Bundle with Linear Asset Management and Geo-Enablement Framework for EAM Available starting Q3 2021

# End-to-end Maintenance Management Processes with SAP S/4HANA



## How is Maintenance Work generated?

- Reactive Maintenance – Work requests
- Proactive Maintenance
- Improvement Maintenance
- Operational and Overhead Maintenance
- Condition Monitoring
- IoT/Predictive Monitoring

## How do you prioritize and prepare work packages and monitor order readiness?

- Maintenance Process Phases
- Screen Maintenance Requests and Backlog
- Risk-based Event Prioritization
- Group work based on scope or time
- Approval and Preparation

## How do you manage capacity, utilization and optimize resources?

- Manage work center utilization
- Maintain flexible schedule periods
- Monitor non-working times
- Must-Start On constraints and last acceptable completion
- Share and Collaborate on Schedules
- Monitor Schedule Attainment

## How do we perform work quickly, correctly, and safely?

- Process all work types
- Leverage Work Instructions
- Capture work history, failure modes, labor time and materials consumed
- Work Permits
- Mobile enabled processes for offline execution

## Analyze

## How can we continuously improve maintenance strategies, costs, and equipment uptime?

- Analyze MTTR and MTBF
- Identify Bad Actors and common failures
- Monitor costs – baseline, planned, and actual across work

# SAP S/4HANA®

Business Scope Release 2021

## Asset Management

---



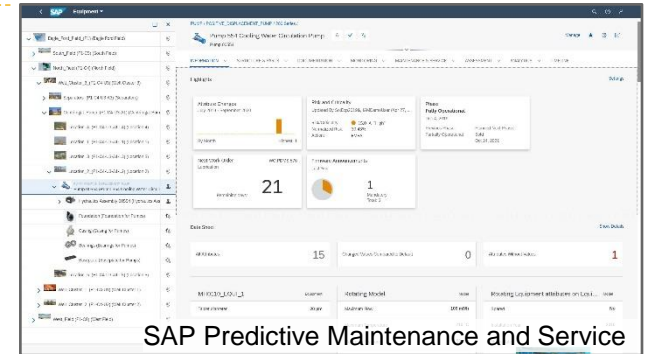


# SAP S/4HANA Asset Management: Overview

## Suite LoB Solutions

- additional license
- additional installation

- SAP Intelligent Asset Management
  - SAP Asset Intelligence Network
  - SAP Predictive Asset Insights
  - SAP Mobile Asset Management
  - SAP Asset Strategy and Performance Management
  - SAP Predictive Engineering Insights
- SAP Master Data Governance
- SAP Spatial Asset Management

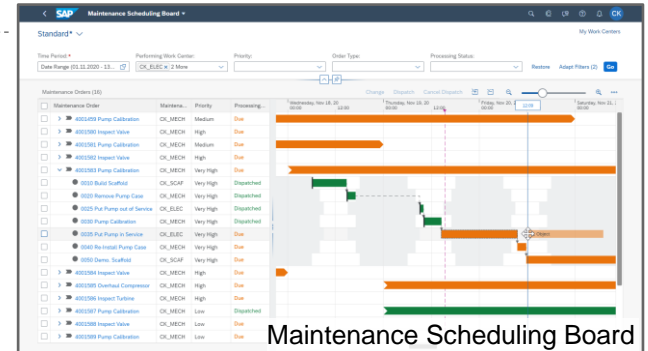


## SAP S/4HANA LoB Apps

- additional license

Asset Operations and Maintenance

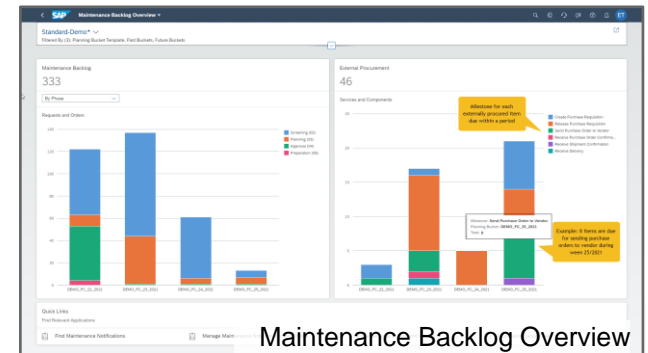
**Extend** core scheduling functionality with detailed scheduling capabilities and resource planning.



## SAP S/4HANA Enterprise Management

Maintenance Management

**Leverage** a holistic approach including planning, execution, improvement, and collaboration. Combine material management and plant maintenance functionalities to plan and achieve a holistic strategy for maintenance management. Track costs and conduct thorough damage analysis.

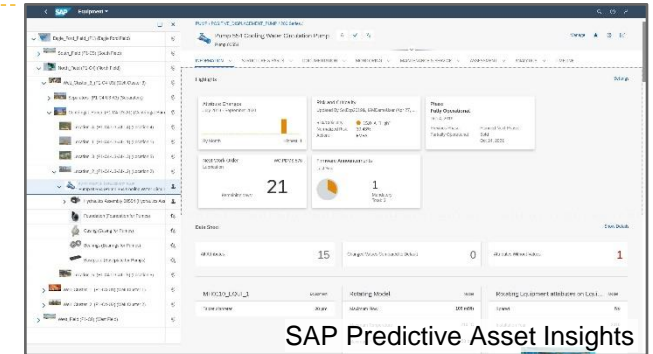


# SAP S/4HANA Asset Management: Business Areas and Capabilities

## Suite LoB Solutions

- additional license
- additional installation

- SAP Intelligent Asset Management
  - SAP Asset Intelligence Network
  - SAP Predictive Asset Insights
  - SAP Mobile Asset Management
  - SAP Asset Strategy and Performance Management
- SAP Master Data Governance



## SAP S/4HANA LoB Apps

- additional license

Asset Operations and Maintenance

Asset Spatial Enablement

- additional license
- additional installation

Maintenance Scheduling

- additional license

**Combine** spatial and asset data to describe, locate, and manage maintenance activities for linear assets (e.g. pipeline, road, railway, etc.).

**Optimize** resources for asset maintenance with a visualized scheduling board.

## SAP S/4HANA Enterprise Management

Maintenance Management

Maintenance Demand Processing

Maintenance Planning

Maintenance Execution

**Create and screen** work requests through easy-to-use web apps from any device.

**Automate and plan** creation of recurring regular maintenance work for assets. **Organize** work orders in planning buckets and track stock and procurement for parts needed.

**Record** hours and parts consumed with variances to the plan with operational data (e.g. meter and counter readings) to be fed back into the planning cycle via analytics.



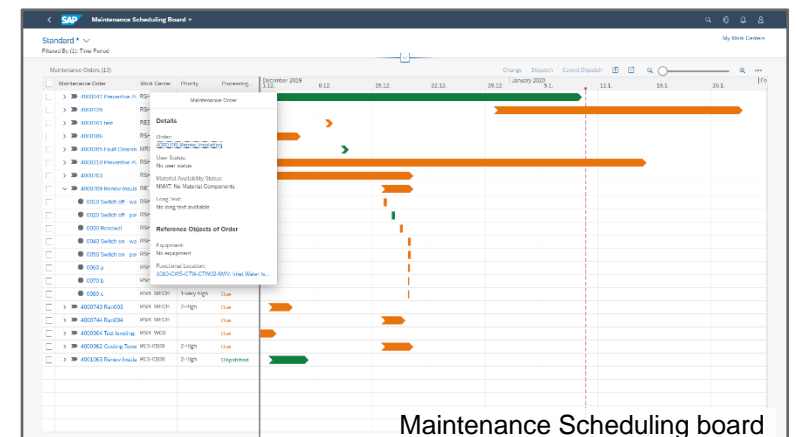
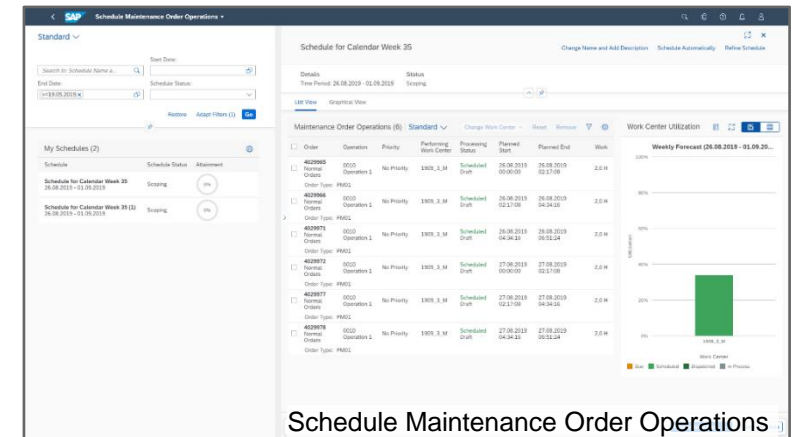
# SAP S/4HANA Asset Management: Maintenance Scheduling

Optimize maintenance schedule with availability windows for maintenance, work center capacity, and maintenance plans.

Use **SAP S/4HANA Asset Management for resource scheduling** for embedded resource scheduling.

- Gain insight into your maintenance workload and available capacities for current and upcoming maintenance activities
- Identify critical planning situations early and take action to improve planning-relevant KPIs
- Plan maintenance orders efficiently based on work center utilization to make sure that all maintenance jobs can be completed
- Adjust work center capacity quickly
- Assign statuses to schedules and optimize work center capacity.
- Visualize the maintenance orders in your work centers to gain transparency about what needs to be done when
- Set up, share, and monitor schedules
- Provide feedback for a schedule and plan your own work accordingly

Optionally, **Multi-resource Management** can still be used.





# SAP S/4HANA Asset Management: Spatial Asset Management

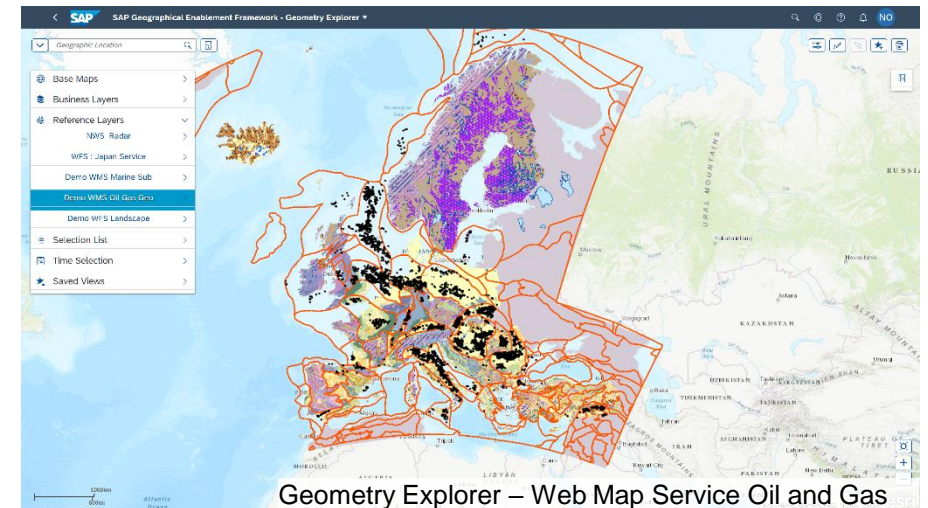
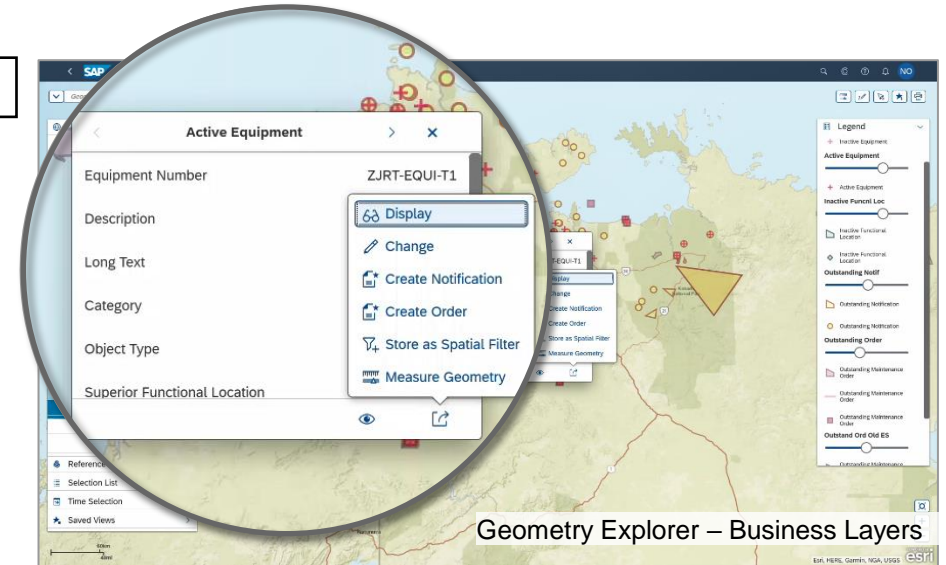
Asset Ops and Maintenance

Asset Spatial Enablement

Seamlessly integrate with geographical information systems (GIS) and business spatial data providing **end-to-end spatial workflows**

## Key Capabilities:

- Run SAP business transactions from a map on any device
- Create and manage geometry for business objects (equipment, functional location, notification, and work order)
- Support for multiple business layers, reference layers, and geometry types (points, lines, and polygons)
- Bi-directional and real-time visualization of SAP spatial data and external geographical information systems (GIS)
- Linear data modeling – enhancement of technical object functions and classification system to support the definition of a linear asset – e.g. power lines, pipelines, roads, and rail tracks)
- Linear asset work management – enhancement of work order processing to support linear work definition including: notifications, measurement points and counters, measurement documents, work orders, confirmations, and maintenance plans to support linear information



# SAP S/4HANA Asset Management: Delta Scope Summary

2021

## Maintenance Management

### Enhancement to process

- Phase Model for the Maintenance Process
- Risk Matrix
- Manage Maintenance Backlog and Buckets
- Lean Service Procurement
- Procurement milestones and tracking
- Maintenance Order: Enhanced ATP Check
- EAM Inspection Checklists

### Internal integration

- Lean Service Procurement
- Integration of Maintenance Orders and Extended Warehouse Management Solution

### UX

- Machine learning based entry assistance for damage code
- Task List: Mass Changes
- New Fiori apps for the enhanced process  
Create Maintenance Request · Perform Maintenance Jobs · Maintenance Backlog · Manage Maintenance Planning Buckets · Manage Maintenance Notifications and Orders

### Cost Controlling

- New Cost Analytics App

### Additional Events and APIs

Measuring Point Events, Maintenance Task List Events

## Asset Operations and Maintenance\*

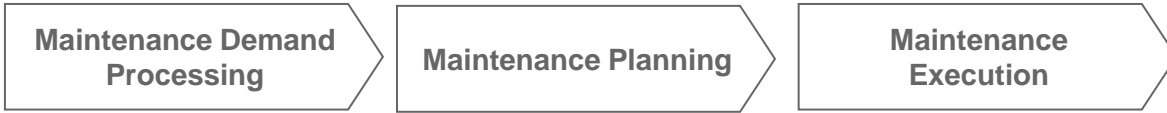
### UX

- Incremental and continuous UX improvements

## Asset Spatial Enablement\*\*

- Interface with any map that is OGC (Open Geospatial Consortium) compliant
- Improvements to linear asset management

# Phase Model for the Maintenance Process



With the new phase model, you can create maintenance requests and maintenance orders of specific new types.

These maintenance requests and orders are part of an end-to-end process that is structured according to nine phases.

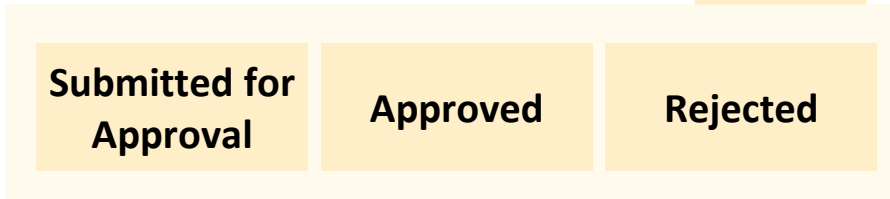
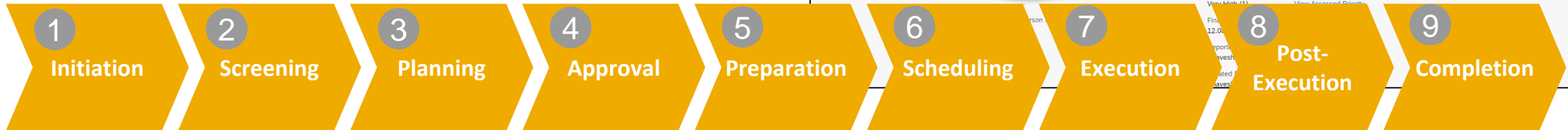
10051354  
Vibration while closing the valve

Notification Type: Reactive Work (Y1)  
Maintenance Order: Vibration while closing the valve  
Phase: Planning  
Subphase: Order Assigned (Request)  
Priority: Very High (1)  
Breakdown: Yes

Object Overview  
Original Files: 0  
Number of Notification Items: 0  
Number of Notification Tasks: 0  
Number of Notification Activities: 0

General  
Notification Type: Reactive Work (Y1)  
Maintenance Order: Vibration while closing the valve (1899229)  
Created On: 11.08.2021  
Created At: 18:17:09

Dates  
Required Start Date: 11.08.2021  
Required Start Time: 18:17:08  
Required End Date: 12.08.2021  
Required End Time: 18:17:09

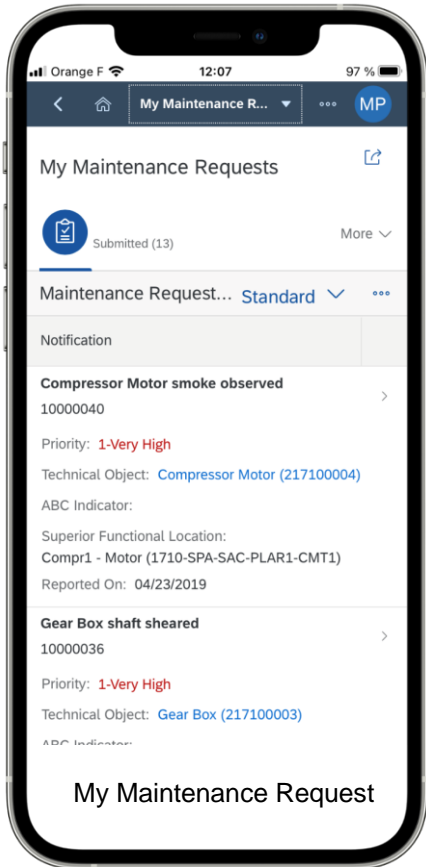


The individual phases are divided into subphases which - similar to an overall status - document the progress in the maintenance process. You can filter, sort and group the maintenance orders according to the phases or subphases in several order list views.

# Create and Screen Maintenance Requests

Maintenance Demand Processing

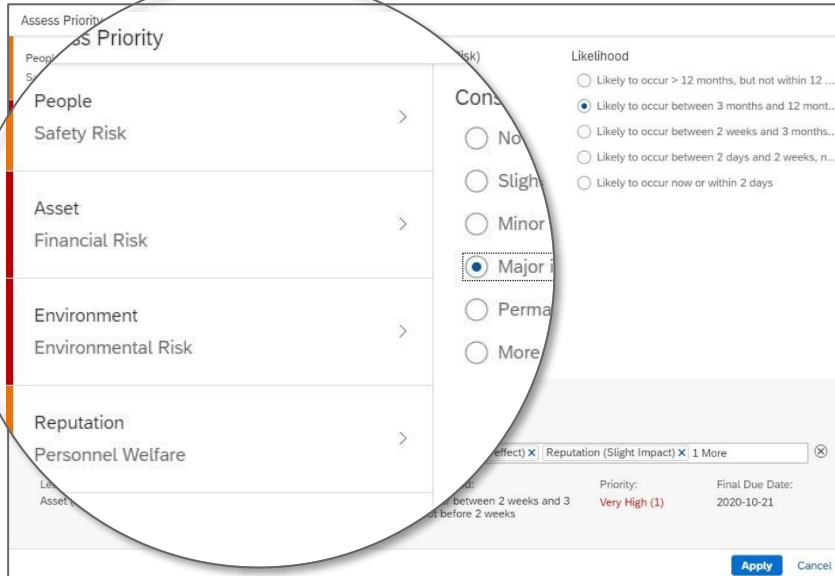
1 Initiation



2 Screening

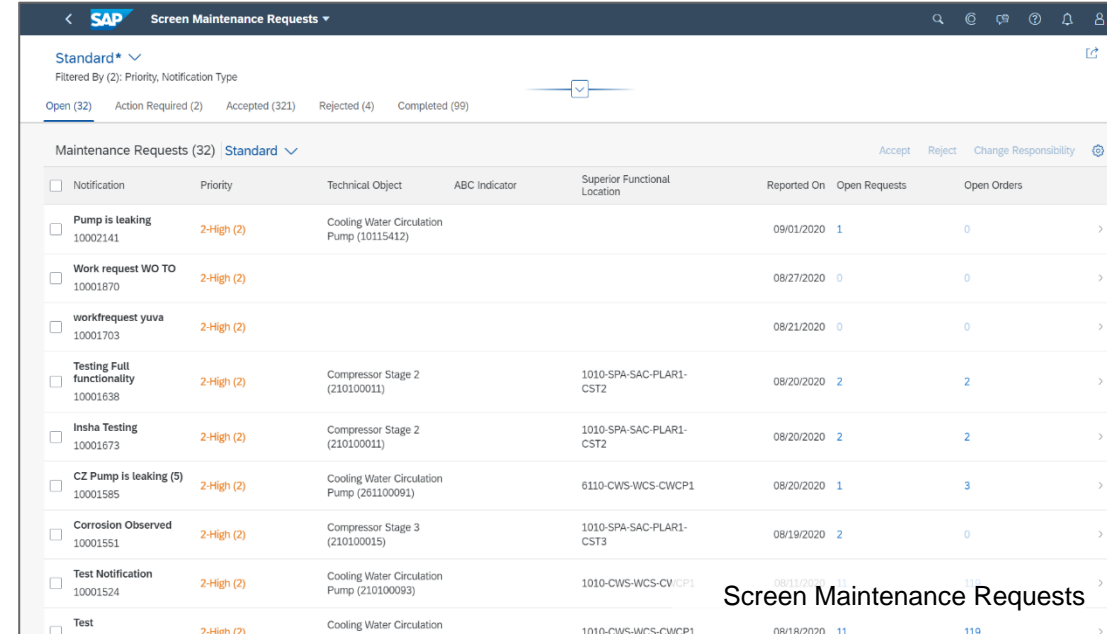
## Risk Assessment

You can include a risk-based assessment of the priority of work request by evaluating expected consequences of failure and their likelihood.



## Screening

Maintenance supervisors / planners can review maintenance requests and edit details. You can return a maintenance request to the initiator for additional information. You can proceed to the next phase by accepting the request.





# Manage Workflows, Teams, and Responsibilities

Maintenance Planning

Maintenance Execution

3

Planning

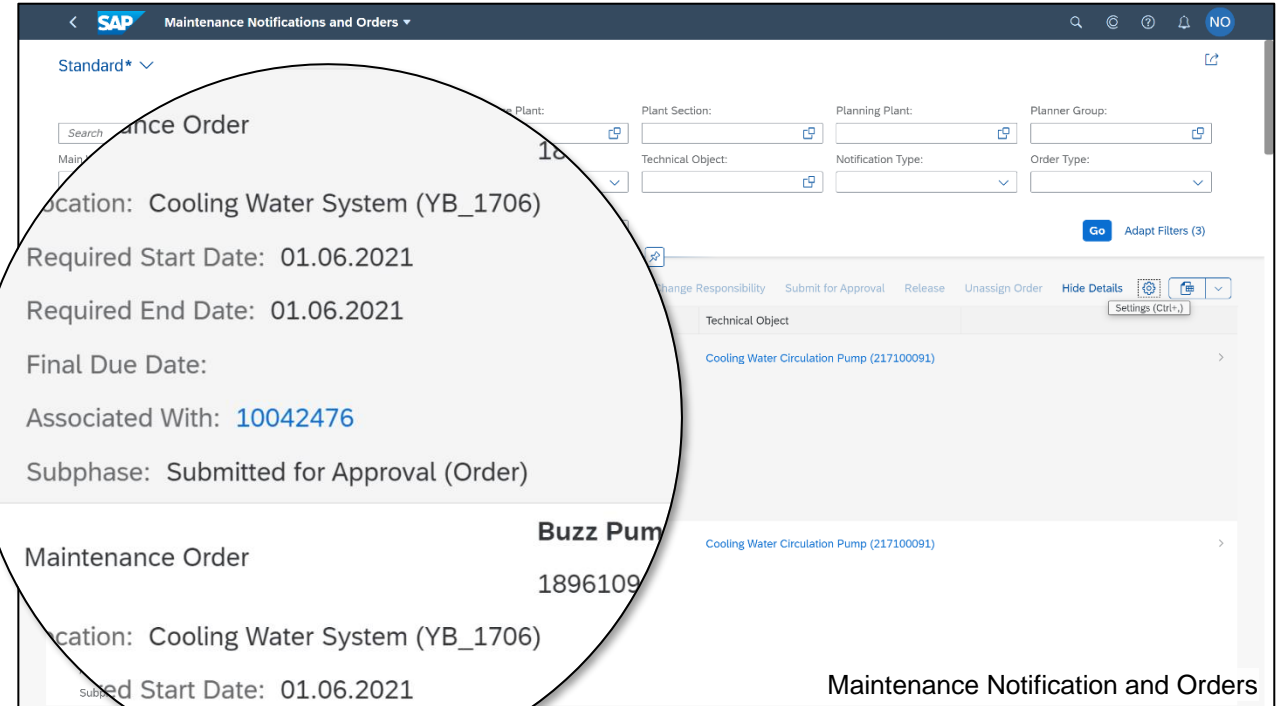
4

Approval

5

Preparation

You can initiate an approval process and manage the approval workflow for maintenance orders. As a configuration expert, you can configure workflows to optimize the approval process for maintenance orders.



# Maintenance Planning Buckets and Backlog

Maintenance Planning

Maintenance Execution

3

Planning

4

Approval

5

Preparation

By defining maintenance planning buckets, you can divide the maintenance effort into manageable groups based on their scope. The scope of a planning bucket includes time, but also other important attributes of the maintenance jobs such as the planner group. Based on this scope, the system groups maintenance orders and assigns them to the corresponding planning buckets.

Orders in Management Maintenance Backlog

Order	Order Type	Status	Priority	Final Due Date	Scheduled Start	Scheduled End
1896257	Proactive Maintenance (YA02)	🟢			03.06.2021, 21:38:57	28.06.2021, 22:16:48
DF: Pump Vibrating (1896483)	Reactive Maintenance (YA01)	🟡	Medium	25.06.2021	23.06.2021, 18:51:33	25.06.2021, 23:06:33
Leakage from Hose (1896505)	Reactive Maintenance (YA01)	🟢	Medium	12.07.2021	16.06.2021, 22:09:14	07.07.2021, 17:07:30
Heavy noise from NDE side (1896702)	Reactive Maintenance (YA01)	🔴	Very High	25.06.2021	23.06.2021, 15:00:00	23.06.2021, 18:11:15
Monthly Pump Inspection (1896711)	Proactive Maintenance (YA02)	🔴	Medium	25.06.2021	28.06.2021, 16:00:00	28.06.2021, 16:00:00
Monthly Pump Inspection (1896713)	Proactive Maintenance (YA02)	🟢	Medium		23.06.2021, 04:05:36	23.06.2021, 04:05:36
Monthly Pump Inspection (1896714)	Proactive Maintenance (YA02)	🟢	Medium	25.06.2021	23.06.2021, 04:13:38	23.06.2021, 04:13:38
Monthly Pump Maintenance (1897103)	Proactive Maintenance (YA02)	🟢	Medium		29.06.2021, 02:02:24	29.06.2021, 07:52:29

Services in Management Maintenance Backlog

Order	Status	Operation Details	Operation Description	Item Number	Purchase Requisition and Item
Leakage from Hose (1896505)	🔴	0010 PRE	Prepare	0030	14265073 10
		0030 POST	Restore	0030	14265073 20
Heavy noise from NDE side (1896702)	🔴	0010 PRE	Prepare	0010	14265275 10

# Maintenance Backlog Overview & Procurement Milestone

Maintenance Management

2021

Maintenance Planning

Maintenance Execution

3

Planning

4

Approval

5

Preparation

You can use this Maintenance Backlog to monitor the procurement of non-stock materials and services by means of procurement milestones.

The completion of some milestones depends on changes in the purchase order and posting of the goods receipt for non-stock components.

SAP Manage Maintenance Backlog

1010\_CWS\_29\_2021  
Clear water system

Previous Bucket Next Bucket

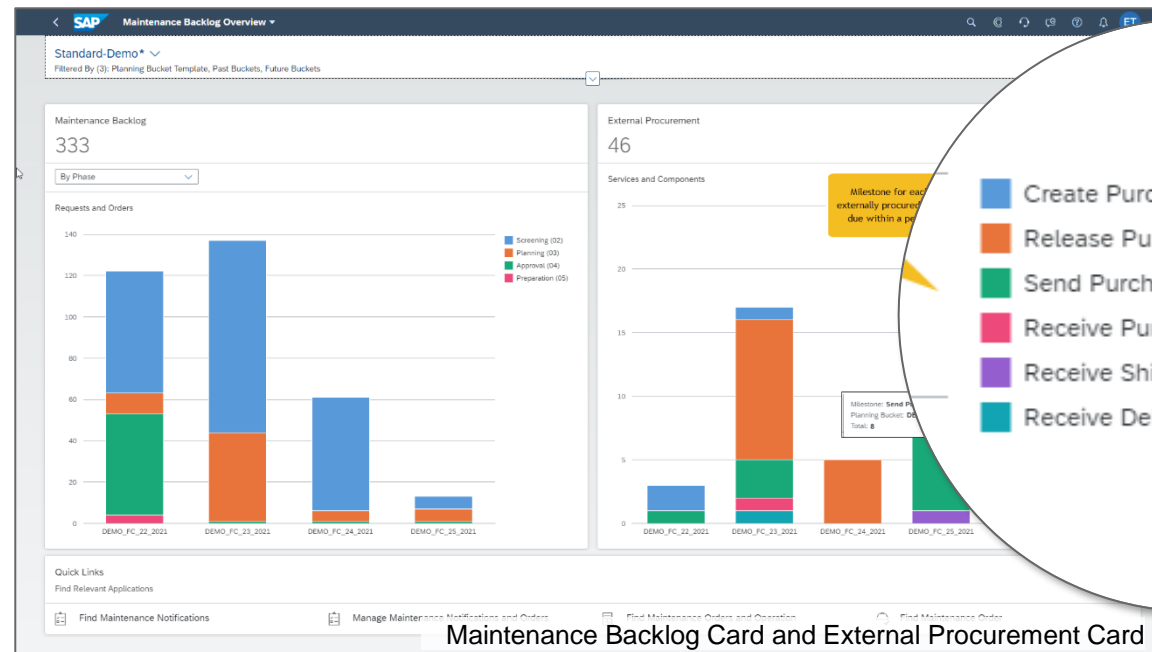
Planning Plant: 1010 Start Date and Time: 19.07.2021, 00:00:00 Technical Object: 1010-CWS\*  
End Date and Time: 26.07.2021, 00:00:00 Maintenance Plant: Plant 1 DE (1010)  
Duration: 7 DAY

Orders Stock Components Non-Stock Components Services Resources

Non-Stock Components (2) All Orders Orders In Preparation Show Details

Order	Status	Next Procurement Activity	Component	Operation Details	Operation Description	Item N...	Purchase Requisition and Item	Purchase Order and Item
Pump leaking replace seal (4000081)	⚠	Release Purchase Requisition	Mechanical Seal (SP005)	0030 MAIN	Replace seal	0010	10001494 30	
		Activity "Release Purchase Requisition" was due on 05.07.2021						
	⚠	Release Purchase Requisition	O-ring	0030			10001494	

Non-Stock Components in Manage Maintenance Backlog



# Maintenance Order: Enhanced ATP Check

Maintenance Planning

Maintenance Execution

5

Preparation

Scheduling

7

Execution

Perform an enhanced material availability check (ATP check) for maintenance orders and reassign committed stock material to the orders with the highest priority and urgency.

you can manually determine that committed quantities of individual components should not be cleared and reassigned during a material availability check by selecting the Keep Commitment checkbox. In this case, available quantities will only be assigned to the respective maintenance order but cannot be removed by the ATP check.

Manage Maintenance Backlog

Order	Status	Operation Details	Component Details	Oper...	Requirement Quantity	Committed Quantity
Monthly Pump Maintenance (1897951)	🟢	0020 MAIN	Spare part-2 (SP002) Trading Goods-HAWA (HAWA)	Rout...	2,000 EA	2,000 EA
Pump Insp - Services (1899073)	🔴	0010 MAIN	Spare part-1 (SP001) Trading Goods-HAWA (HAWA)	op 1	1,000 EA	0,000 EA
Pump Insp - Services (1900002)	🟢	0010 MAIN	Spare part-1 (SP001) Trading Goods-HAWA (HAWA)	op 1	1,000 EA	1,000 EA
Lean Service Test (1900344)	🔴	0010 MAIN	Spare part-1 (SP001) Trading Goods-HAWA (HAWA)	op 1	1,000 EA	1,000 EA

Change Proactive Maintenance: 4002659

Change Maintenance Order

Material	Description	Item Category	Quantity	Keep Commitment
SP001	Bearing	Stock Item	1	<input type="checkbox"/>
SP003	Shaft	Stock Item	1	<input type="checkbox"/>
SP004	Gaskets 1mm	Stock Item	1	<input checked="" type="checkbox"/>
				<input checked="" type="checkbox"/>
				<input type="checkbox"/>

# Resource Scheduling

Maintenance Scheduling

6 Scheduling

Resource Scheduling has had various useability and functional improvements.

Asset Operations and Maintenance \*

2021

**Manage Schedules - Demo Schedule - 2 weeks**

Time Period: 2020/10/08 - 2020/10/21

Order	Operation	Priority	Performing Work Center	Processing Status	Planned Start	Planned End	Work	Order Type
4005422	Exchange Pump (Plant Section ZCK)	Medium	ZSCAFFLD	Scheduled Draft	2020/10/15 06:00:00 AM	2020/10/15 02:00:00 PM	8.0 H	YA02
4005422	Exchange Pump (Plant Section ZCK)	Medium	ZCK_ELEC	Scheduled Draft	2020/10/08 08:00:00 AM	2020/10/08 10:00:00 AM	2.0 H	YA02
4005422	Exchange Pump (Plant Section ZCK)	Medium	ZCK_MECH	Scheduled Draft	2020/10/16 08:00:00 AM	2020/10/16 04:00:00 PM	8.0 H	YA02
4005422	Exchange Pump (Plant Section ZCK)	Medium	ZCK_ELEC	Scheduled Draft	2020/10/16 04:00:00 PM	2020/10/16 06:00:00 PM	2.0 H	YA02
4005422	Exchange Pump (Plant Section ZCK)	Medium	ZSCAFFLD	Scheduled Draft	2020/10/19 06:00:00 AM	2020/10/19 02:00:00 PM	8.0 H	YA02
4005425	Electrical Inspection	Low	ZCK_ELEC	Due	2020/08/24 10:50:16 AM	2020/08/25 10:50:16 AM	10.0 H	YA02
4005712	Test ZZZ	Medium	ZCK_MECH	Due	2020/08/28 01:50:59 PM	2020/08/28 02:50:59 PM	1.0 H	YA02
4005712	Test ZZZ	Medium	ZCK_MECH	Due	2020/08/28 02:50:59 PM	2020/08/28 03:50:59 PM	1.0 H	YA02
4005712	Test ZZZ	Medium	ZCK_MECH	Due	2020/08/28 03:50:59 PM	2020/08/28 04:50:59 PM	1.0 H	YA02

**Daily Forecast (2020/10/08 - 2020/10/14)**

Utilization chart showing utilization percentage over the day of the week for ZCK\_MECH, ZCK\_ELEC, and ZSCAFFLD.

Manage Schedule

**Utilization view in Manage Schedules**

Planned Start	Planned End	Processing Status	Work	Order Type	Performing Work Center
26.02.2020 06:00:00	24.02.2021 14:30:00	Dispatched	2,000.0 H	YBA1	RES-0100
23.06.2020 06:00:00	13.12.2022 14:30:00	Due	5,000.0 H	YBA1	RES-0100

2 Work Centers (13.11.2020 - 06.12.2020)

Utilization chart showing utilization percentage over calendar weeks for two work centers. Target is indicated by a dotted line.

Utilization view in Manage Schedules

**Maintenance Scheduling Board**

Time Period: 01.11.2020 - 13.11.2020

Maintenance Order	Maintena...	Priority	Processing...
4001459	Pump Calibration	CK_MECH	Medium
4001580	Inspect Valve	CK_MECH	High
4001581	Pump Calibration	CK_MECH	Medium
4001582	Inspect Valve	CK_MECH	High
4001583	Pump Calibration	CK_MECH	Very High
0010	Build Scaffold	CK_SCAF	Very High
0020	Remove Pump Case	CK_MECH	Very High
0025	Put Pump out of Service	CK_ELEC	Very High
0030	Pump Calibration	CK_MECH	Very High
0035	Put Pump in Service	CK_ELEC	Very High
0040	Re-Install Pump Case	CK_MECH	Very High
0050	Demo Scaffold	CK_SCAF	Very High
4001584	Inspect Valve	CK_MECH	High
4001585	Overhaul Compressor	CK_MECH	High
4001586	Inspect Turbine	CK_MECH	High
4001587	Pump Calibration	CK_MECH	Low
4001588	Inspect Valve	CK_MECH	Low
4001589	Pump Calibration	CK_MECH	Low

Gantt chart showing the scheduling of these maintenance orders over time.

Maintenance Schedule Board



# Maintenance Orders and Extended Warehouse Management

Maintenance Planning

Maintenance Execution

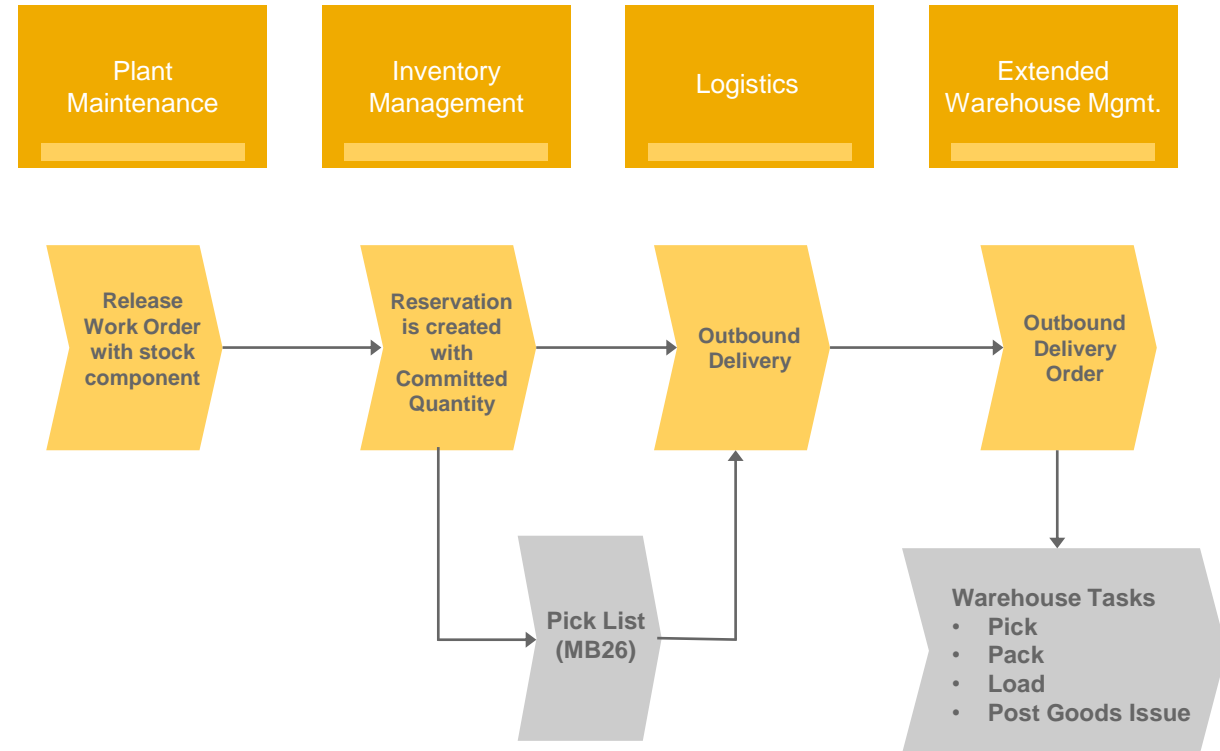
5

Preparation

Scheduling

7

Execution

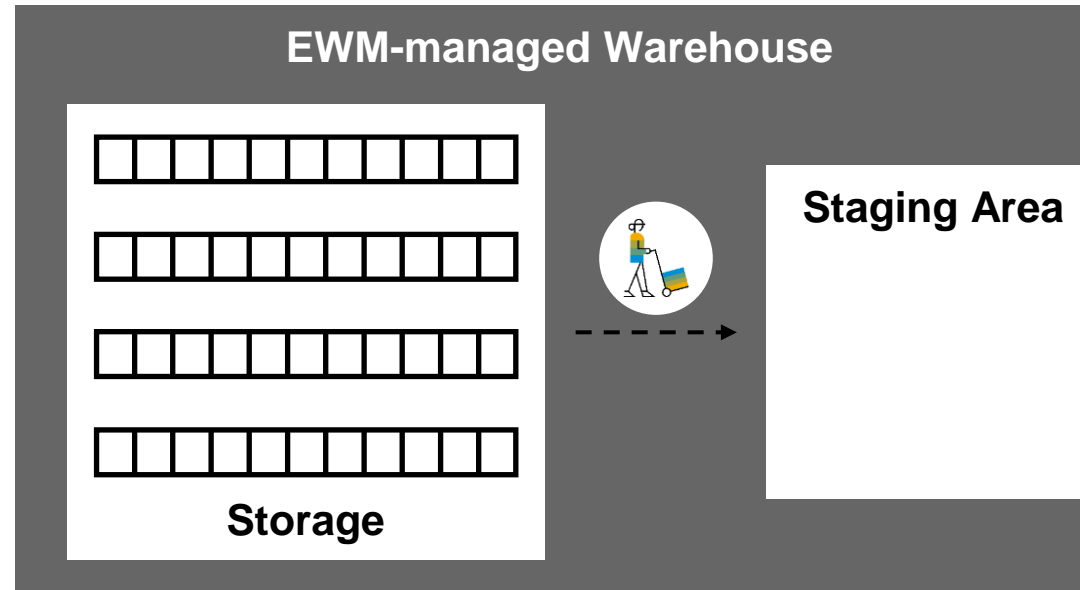


For large-scale warehouse, a new master data object has been introduced: recipient location. It identifies the location where the intended recipient can receive the component.

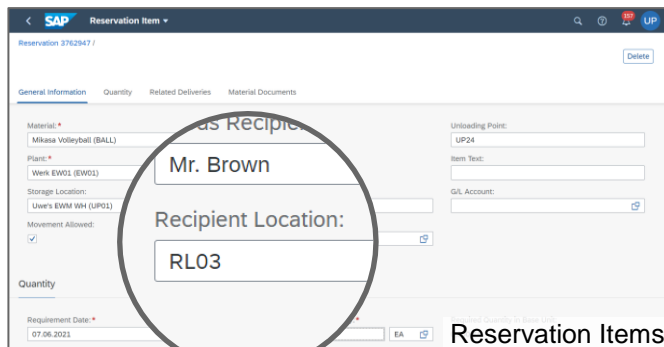
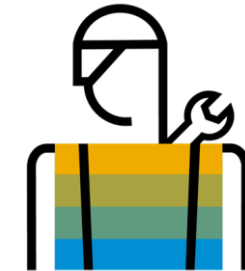
The integration between maintenance order and extended warehouse management establishes seamless flow between asset maintenance, inventory management, and warehouse, thereby enabling easy tracking of requested stock components across the end to end process.

# Plant Maintenance Integration

Maintenance Order /  
Manual Reservation

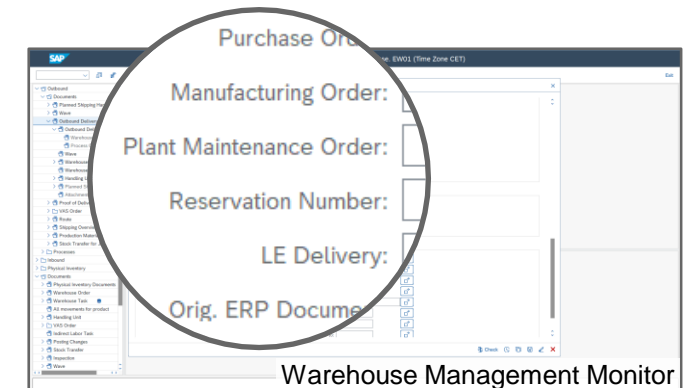


Maintenance operations  
using staged spare parts



Run plant maintenance operations that involve  
EWM-stored spare parts seamlessly

- Staging based on **PM order** / manual reservation
- **Recipient location** to determine correct staging area
- Adaption of **Warehouse Management Monitor**
- **Unplanned goods issue** with reference to PM order



# ML Based Entry Assistance for Damage Details

- The machine learning feature in the Add Malfunction Details Damage Details section provides appropriate damage code and object part as part of the value help.
- Use Machine Learning algorithms (RDT - Random Decision Tree) to propose the most likely damage code and object part.

The screenshot displays the SAP 'Perform Maintenance Job' interface. At the top, the job ID '0070' and description 'Clean the overall space' are visible. Below this, a navigation bar includes 'Operation Details', 'Suboperations', 'Malfunction Data', 'Malfunction Details' (selected), 'Components', and 'Attachments'. A table lists malfunction details with columns for 'Damage Code Description', 'Object Part Code Description', 'Cause', 'Activity', and 'Actions'. The table contains three rows, all with 'Protective device activated' as the damage code and 'Object parts mechanical' as the object part. An 'Add Malfunction Details' dialog box is open, showing a search for 'Gear box' in the 'Object Part' field. The 'Damage Code' field is empty, and a dropdown menu is open, displaying a 'Recommended' list with 'Protective device activated' and an 'Others' list with 'Contact fault', 'Control unit fault', 'Drive fault', and 'Transmitter fault'. A callout bubble highlights the 'Confidence: 76%' value associated with the recommended damage code.

Damage Code Description	Object Part Code Description	Cause	Activity	Actions
Protective device activated	Object parts mechanical	0	0	Edit
Protective device activated	Object parts mechanical	0	0	Edit
Protective device activated	Object parts mechanical	0	0	Edit

**Add Malfunction Details**

Object Part: Gear box

Damage Code:

**Recommended**

- Protective device activated

**Others**

- Contact fault
- Control unit fault
- Drive fault
- Transmitter fault

Confidence: 76%

# Lean Service Procurement in Maintenance Order

## Maintenance Execution

- Lean service can be enabled for select work order types
- Users can also use enhanced limit value-based services for each operation or sub operation of the work order
- Identification for service type is enabled using item category

The screenshot displays the SAP interface for 'Change Reactive Maintenance: 4000081'. The main table shows service items with columns for Description, Item Category, Quantity, Unit, and Service. Two items are highlighted: 'Perform safety check and plac...' with 'Non-stock item' category and 'replace seal' with 'Enhanced Limit' category. A callout box explains that the 'Enhanced Limit' category is used to differentiate lean services and limit value services. Another callout points to the 'Duration' column, stating it is used to calculate start and end dates. A third callout points to the 'Price' and 'Overall' columns, noting that for enhanced limit items, these values are essential.

Description	Item Category	Quantity	Unit	Service
Perform safety check and plac...	Non-stock item	1	H	
replace seal	Enhanced Limit	1	AU	

Item category to differentiate lean services and limit value service.

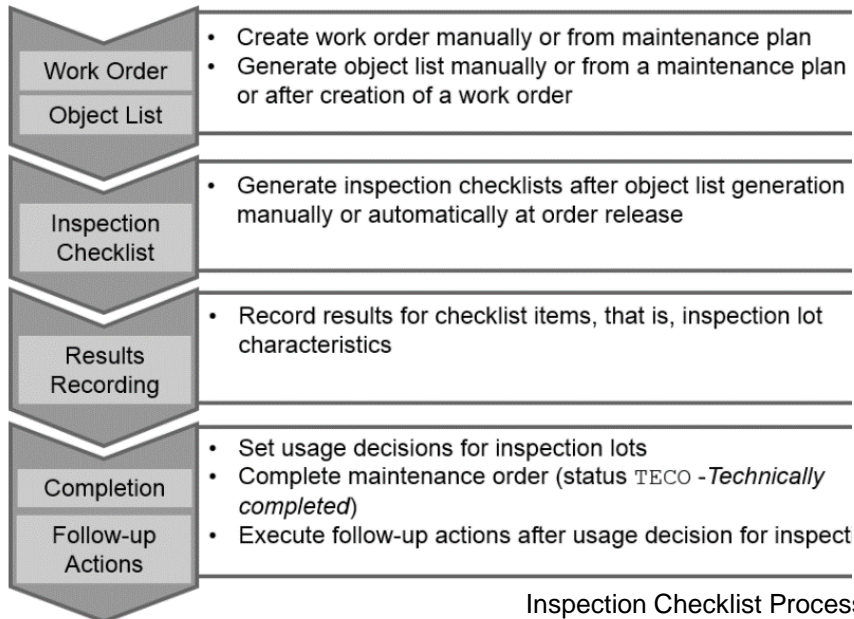
Duration of service performance needs. This is used to calculate start and end date for the service.

For items with enhanced Limit, expected price and overall limits are essential

# Inspection Checklist

Maintenance Execution

- Enable inspection checklist process from creation of inspection plans, results recording, and follow-up actions – e.g. new checklist tab on maintenance orders
- Create inspection checklist templates for combinations of technical objects and recurring maintenance tasks; e.g. monthly electrical check-ups



Inspection Checklist Process

Display Maintenance order 4072812: Central Header

Order: PM01 4072812 Monthly Mechanic Check

Sys.Status: LRRR TECO CLGE JBFJ NMAT OLG E PRC CT1 TPOH

Checklist for valves

Status	Inspection Lot	Inspection Lot Short Text	Activity	ILType	Group
<input type="checkbox"/>	890000002566	EQU:A			
<input type="checkbox"/>	890000002567	EQU:A			
<input type="checkbox"/>	890000002565	EQU:A			

List of results - Insp. Characteristic

Status	Not Valuated	Accepted	Rejected	Failed	Row Count	Inspection Lot
<input type="checkbox"/>	1	0	0	0	1	890000002566
<input type="checkbox"/>	0	1	0	0	1	890000002567
<input type="checkbox"/>	1	0	0	0	1	890000002565

Record Results

diameter 90

Valuation Rejected

Validate Record Defect More Information

Color Yellow

Valuation Accepted

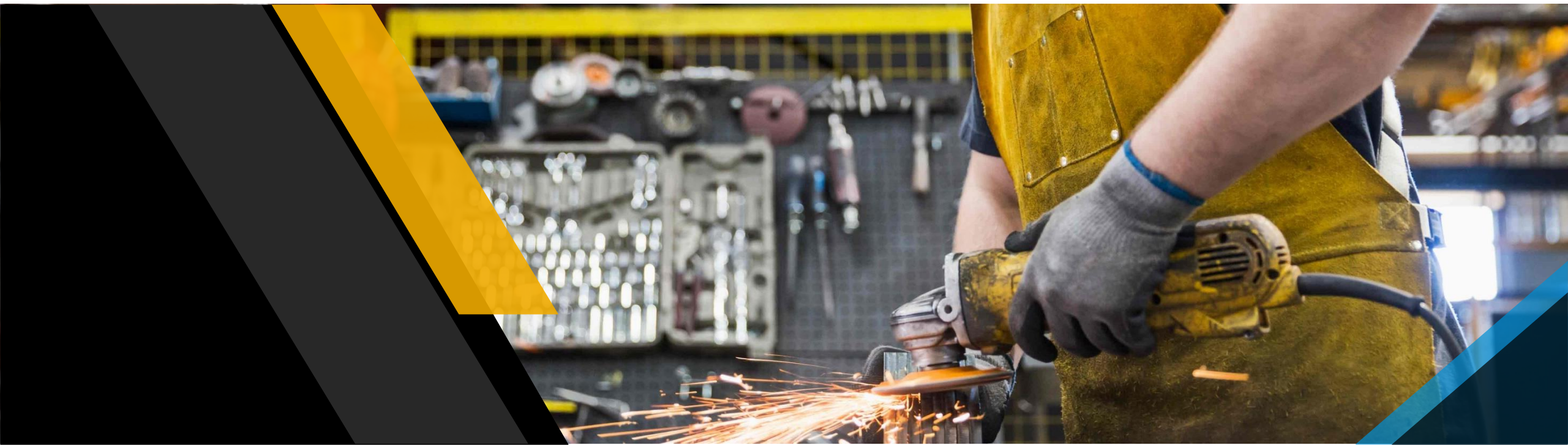
Validate Record Defect More Information

Asset Manager\*\* on iPad – Record Results



# SAP S/4HANA 2021

## Innovation Highlights for Asset Management



# SAP S/4HANA 2021 for Asset Management

## Innovation Highlights



### Maintenance Planning

#### Enable a risk and criticality matrix for evaluation of maintenance activities

- Define the criticality matrix and provide a framework to estimate the time-dependent probability of failure (CoF) for a component and, thereby, on the system
- Determine the consequences of deferral of a maintenance task and estimate the cost of the consequence
- Determine the benefits of deferral (such as increased production or savings on operational costs)
- Prepare time-dependent cost-benefit analysis
- Suggest a deferral time and associated risks
- Determine the priority of the task based on the estimated risk

#### Benefit

- Evaluate the risk associated with the deferral of a maintenance task by estimating the adverse consequences in terms of employee safety, production loss, and environmental impact as well as the likelihood of the consequence
- Resolve or reduce risk by evaluating various mitigation strategies
- Prioritize maintenance tasks based on the evaluated risk and effectively manage the maintenance workload



Assess Priority

People Safety Risk	Consequence - People (Safety Risk) <ul style="list-style-type: none"> <li><input type="radio"/> No injury or health impact</li> <li><input type="radio"/> Slight injury or health effect</li> <li><input type="radio"/> Minor injury or health effect</li> <li><input checked="" type="radio"/> Major injury or health effect</li> <li><input type="radio"/> Permanent Total disability or less than 3 fatalities</li> <li><input type="radio"/> More than 3 fatalities</li> </ul>	Likelihood <ul style="list-style-type: none"> <li><input type="radio"/> Likely to occur &gt; 12 months, but not within 12 ...</li> <li><input checked="" type="radio"/> Likely to occur between 3 months and 12 mont...</li> <li><input type="radio"/> Likely to occur between 2 weeks and 3 months...</li> <li><input type="radio"/> Likely to occur between 2 days and 2 weeks, n...</li> <li><input type="radio"/> Likely to occur now or within 2 days</li> </ul>
Asset Financial Risk		
Environment Environmental Risk		
Reputation Personnel Welfare		

Assessment Result

Selected Consequences:

Asset (Moderate damage, moderate deferral loss < \$1,000,000) X Environment (Major effect) X Reputation (Slight Impact) X 1 More X

Leading Consequence:	Leading Likelihood:	Priority:	Final Due Date:
Asset (Moderate damage, moderate deferral loss < \$1,000,000)	Likely to occur between 2 weeks and 3 months, not before 2 weeks	Very High (1)	2020-10-21

Key innovations do not reflect licensing

# SAP S/4HANA 2021 for Asset Management

## Innovation Highlights



### Maintenance Planning

#### Enable procurement of services with limit values from maintenance order

- Simplified process to procure services with limit values

#### Benefit

- Easy process for planners to define scope of the service in text format and provide limit value that can be invoiced by subcontractors
- Integrated planning of services provided by a subcontractor along with other internal activities
- Process simplification to manage work execution and payment to subcontractors

#### Business events for maintenance bill of materials

Triggering of business events for maintenance bill of materials during these processes:

- Creation
- Change

#### Benefit

- Enable subscription to business events by external systems

INTEGRATION

Key innovations do not reflect licensing

# SAP S/4HANA 2021 for Asset Management

## Innovation Highlights



### Maintenance Planning

#### Combined management of open maintenance notifications and maintenance orders

New application providing the maintenance planner with a comprehensive overview of open maintenance notifications and the related maintenance orders requiring further planning before they can be submitted for approval:

- Combined view of open maintenance notifications and maintenance orders for planning
- Planner ability to filter the list of open maintenance notifications and maintenance orders by technical object, plant section, location, and main work center
- Creation of new maintenance orders based on outstanding maintenance notifications
- Option to assign an open maintenance notification to an existing maintenance order to resolve the reported issue
- Planning of detailed maintenance activities and required resources on the work order
- Mass change of responsibilities for selected maintenance notifications or maintenance orders
- Submission of final planned work order for approval before starting work preparation
- Replanning of work order not approved (rejected)

Availability only with the following SAP S/4HANA Cloud scope items:

- 4HH – reactive maintenance, 4HI – proactive maintenance
- 4VT – improvement maintenance
- 4WM – operations and overhead maintenance

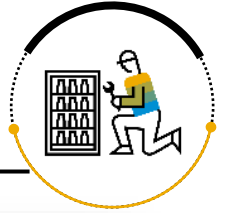
Execution Object Type	Execution Object	Priority	Technical Object	Failure Mode	Location	Required Start Date	Required End Date	Final Due Date	Associated With
Maintenance Order	Testing 4007520	Very High (1)	Cooling Water System (1010-CW5)		Cooling Water System (YB_1006)	10/14/2020	10/14/2020	10/15/2020	
Maintenance Order	Mechanical Inspection for Pump 4006950	No Priority	Cooling Water Circulation Pump (217100091)		Cooling Water System (YB_1706)	10/30/2020	11/02/2020	11/03/2020	
Maintenance Order	AOCs Mechanical Inspection for Pump 4006977	No Priority	Cooling Water Circulation Pump (217100091)		Cooling Water System (YB_1706)	10/21/2020	10/21/2020		10002882
Maintenance Order	Mechanical Inspection for Pump 21.09 4006979	No Priority	Cooling Water Circulation Pump (217100091)		Cooling Water System (YB_1706)	10/26/2020	10/26/2020		10002885
Maintenance Order	Marco check Pump 4006985	No Priority	Cooling Water Circulation Pump (217100091)		Cooling Water System (YB_1706)	10/19/2020	10/19/2020		10002856
Maintenance Order	Machine issue 4007385	Very High (1)	Cooling Water Circulation Pump (217100091)		Cooling Water System (YB_1706)	10/13/2020	10/14/2020	10/15/2020	10003011
Maintenance Notification	Machine issue 10003011	Very High (1)	Cooling Water Circulation Pump (217100091)	G04	Cooling Water System (YB_1706)	10/12/2020	10/13/2020	10/13/2020	4007385
Maintenance Notification	failure due to short circuit 10003071	Very High (1)	Cooling Water Circulation Pump (217100091)		MWN Cooling Water System (YB_1706)	10/16/2020	10/17/2020	10/17/2020	
Maintenance Order	Mechanical Inspection for Pump 4006948	No Priority	Compressor Stage 3 (217100055)		Compressor # 3 (YB_1703)	10/19/2020	10/19/2020		10002870



Key innovations do not reflect licensing

# SAP S/4HANA 2021 for Asset Management

## Innovation Highlights



### Maintenance Planning

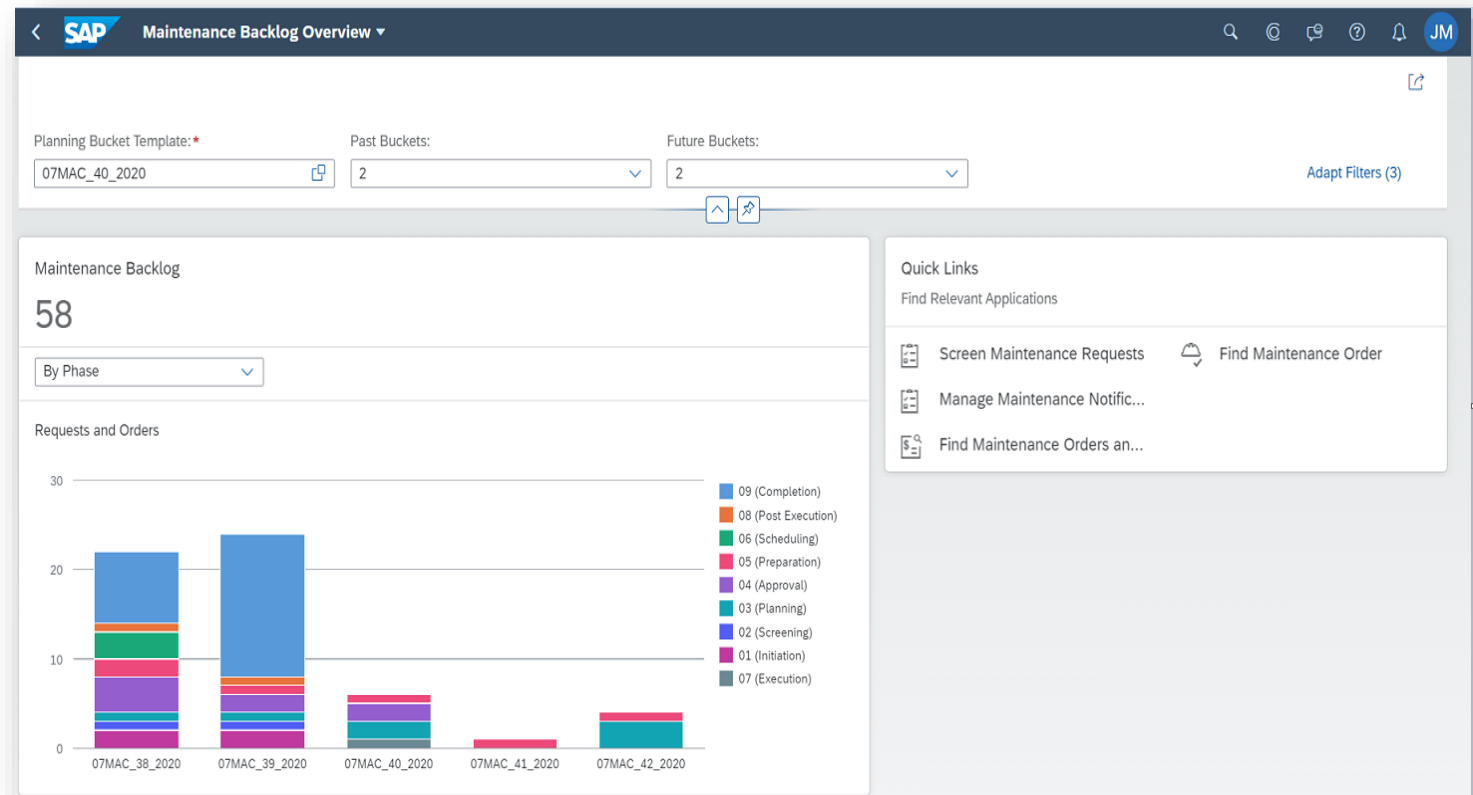
#### Monitor readiness of work orders

Prepare maintenance backlogs before they are scheduled for execution and achieve improved visibility into:

- The latest acceptable completion dates and the availability of resources to execute planned backlog items
- Availability of non-stock parts required for each maintenance work order
- Services procured and confirmed dates from subcontractors

#### Benefit

- Increased wrench time for technicians
- Improved schedule compliance



Key innovations do not reflect licensing



# SAP S/4HANA 2021 for Asset Management

## Innovation Highlights



### Maintenance Planning

Recurring and Nonrecurring\* planning buckets to manage operational maintenance backlog

- Define recurring maintenance periods (such as maintenance windows) with time and scope
- Review maintenance work that can be executed during a maintenance opportunity
- Define planned outages (such as plant revisions) for a time period and location

#### Benefit

- Standardized and optimized management of the maintenance backlog for recurring maintenance periods
- Support shutdown planning with a dedicated planning instrument for grouping maintenance orders



\* **Note:** For this innovation new scope items will be provided. It will not be available with scope items:

- Corrective Maintenance (BH1)
- Emergency Maintenance (BH2)
- Preventive Maintenance (BJ2)

Order	Status	Operation Details	Component Details	Operation Description	Requirement Quantity	Committed Quantity	Withdrawn Quantity
Pump is leaking (4006142)	PRE	0020	Inlet Valve - Gould 3700 series (FC-001) Spare Parts (ERSA)	Inspect new valve and date the record	1,000 PC	0,000 PC	0,000 PC
	PRE	0020	Gaskets 1mm (SP004) Spare Parts (ERSA)	Inspect new valve and date the record	2,000 PC	0,000 PC	0,000 PC

Key innovations do not reflect licensing

This presentation and SAP's strategy and possible future developments are subject to change and may be changed by SAP at any time for any reason without notice. This document is provided without a warranty of any kind, either express or implied, including but not limited to the implied warranties of merchantability, fitness for a particular purpose, or noninfringement.

# SAP S/4HANA 2021 for Asset Management

## Innovation Highlights



### Maintenance Planning

#### Definition of final due date in maintenance requests and maintenance orders

- Rule-based determination of the LACD based on several parameters such as:
  - Priority
  - Origin of request
  - Risk and criticality of a technical object
- Provision of alerts based on the latest acceptable completion date and corresponding basic start and end dates for maintenance backlogs
- Simplified configuration of rules for determining the latest acceptable completion date in the administrator settings
- Ability to track and manage every change to the latest acceptable completion date in a deferral process

**USER EXPERIENCE**

#### Benefit

- Improved planning efficiency and schedule compliance
- Better deployment of the workforce for important backlogs
- Optimized coordination between procurement and other logistics support teams

#### Best practice – proactive maintenance process (4HI)

Proactive maintenance allows you to prevent the failure or breakdown of an asset by implementing preventive maintenance and using proactive measures.

- End-to-end best practice process definition and documentation for on-premise (OP) systems for standard proactive maintenance

#### Benefit

- Clearer understanding of the standard proactive maintenance best practice



Click [here](#) to access the SAP Best Practice Explorer.

#### Best practice – reactive maintenance process (4HH)

This is a comprehensive nine-phase process to support maintenance from the creation of a maintenance request to its completion. Reactive maintenance process allows you to perform asset maintenance whenever a breakdown or a failure occurs.

- En-to-end best practice for process definition and documentation for on premise systems for standard reactive maintenance

#### Benefit

- Clearer understanding of the standard reactive maintenance best practice



Click [here](#) to access the SAP Best Practice Explorer.

Key innovations do not reflect licensing

# SAP S/4HANA 2021 for Asset Management

## Innovation Highlights



### Maintenance Planning

#### OData API for maintenance bill of material on premise

- Deliverable: (API, type: OData Service) for SAP S/4HANA Cloud
  - Operation:
    - Create
    - Read
    - Update
- Support provided by the API for general maintenance task lists as well as equipment task lists and functional location task lists

#### Benefit

- Increase process flexibility using predefined interfaces for processing maintenance task lists
- Save time by automating the creation and updating of maintenance task lists

INTEGRATION

#### Business events for maintenance task list

Triggering of business events for maintenance notifications when:

- Maintenance notifications are created
- Maintenance notifications are set to “In Process”
- Maintenance notifications are set to “Completed”

#### Benefit

- Enable subscription to business events by external systems

INTEGRATION

#### Enabling extended warehouse management with maintenance order

- Improved capabilities to manage stock parts needed for maintenance orders from extended warehouse

#### Benefit

- Better tracking of parts issued from warehouse
- Easy identification of location where parts can be delivered for each recipient

Key innovations do not reflect licensing

# SAP S/4HANA 2021 for Asset Management

## Innovation Highlights

### Maintenance Planning

#### • Proposal of the material item category in maintenance bills of material

- The item category is automatically proposed when adding components to maintenance bill-of-materials, based on the plant and material type for the added component

#### Benefit

- Improved master data maintenance process due to fewer inputs required by the user

#### OData API for maintenance task list (CRUD)

- Deliverable: (API, type: OData Service) for SAP S/4HANA Cloud
- Operation:
  - Create
  - Read
  - Update
- Support provided by the API for general maintenance task lists as well as equipment task lists and functional location task lists

#### Benefit

- Increase process flexibility using predefined interfaces for processing maintenance task lists
- Save time by automating the creation and updating of maintenance task lists

INTEGRATION

### Maintenance Execution



#### Business events for maintenance order confirmation

Triggering of business events for maintenance notifications when:

- Maintenance notifications are created
- Maintenance notifications are set to “In Process”
- Maintenance notifications are set to “Completed”

#### Benefit

- Enable subscription to business events by external systems

INTEGRATION

Key innovations do not reflect licensing

# SAP S/4HANA 2021 for Asset Management

## Innovation Highlights



### Maintenance Demand Processing

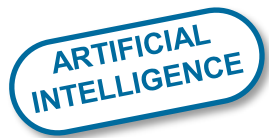
Leverage machine-learning (ML) algorithms to provide system support in maintenance notifications

Leverage machine learning algorithms to proactively manage your maintenance activities:

- Interpret the long text in work notifications and suggest failure codes
- Interpret the long text in work notifications and display lists of work notifications and work orders that resolved a similar problem

#### Benefit

- Decrease the time needed to analyze an incident
- Reduce downtime for the asset



**Perform Maintenance Job**

0060  
Replace Motor Belt

Operation Details Suboperations Malfunction Data **Malfunction Details** Components Attachments

Malfunction Details

Add Malfunction Details

Damage Details Cause Activity

Object Part:

**Recommended**

Gear box Confidence: 78%

**Others**

Fuses  
Protective device  
PLC  
Motors and drives

**Intelligent Scenario Management**

Intelligent Scenarios (2)

Package	Intelligent Scenario	Intelligent Scenario Description
EAM_ML_ORDER_DAMAGE_CODE	PREDICTDAMAGECODE	Prediction of Damage Code and Code Gro...
	<b>PREDICTMAINTOBJPART</b>	Object part prediction in the area of EAM a...



Click here to watch the video and see how Machine-Learning provides system support.

Key innovations do not reflect licensing



# SAP S/4HANA 2021 for Asset Management

## Innovation Highlights



### Maintenance Execution

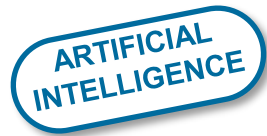
Machine learning–based suggestions for object part code or damage code in notifications to maintenance technicians

- Interpretation of the short text and the long text of a maintenance notification to suggest a damage code during the closeout of a maintenance job

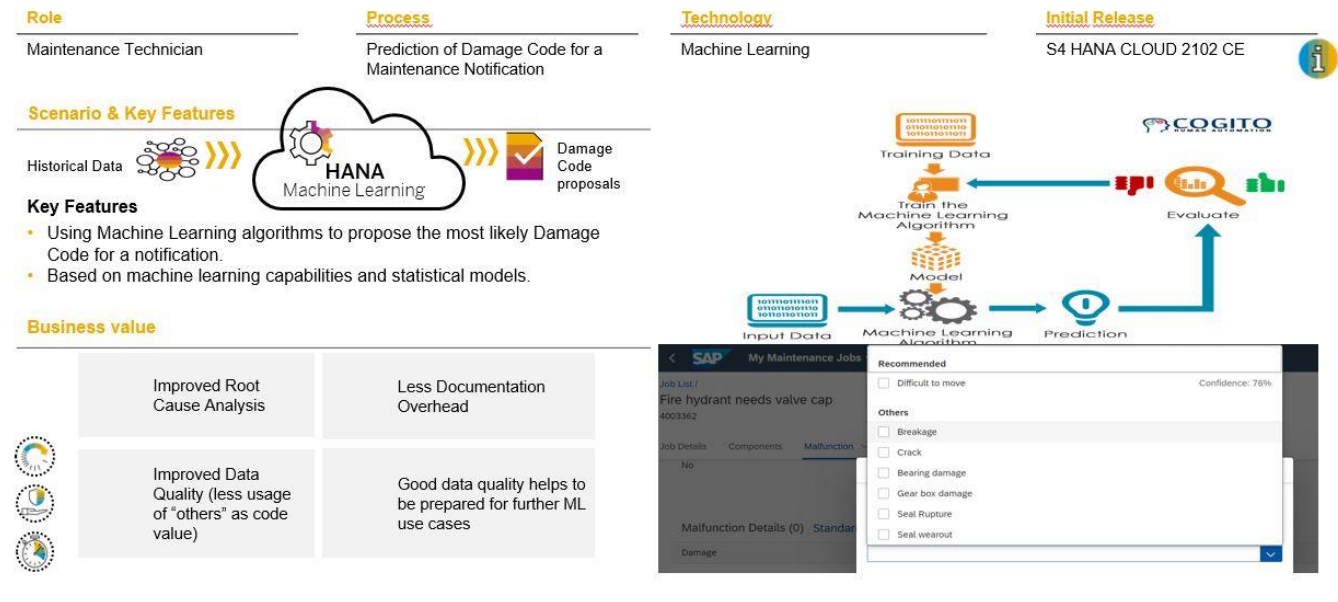
**Note:** This feature is designed to work only within the scope of the "best practice" processes for Reactive Maintenance (4HH) and Proactive Maintenance (4HI).

#### Benefit

- Decrease the time needed to analyze an incident
- Reduce downtime for the asset



### Intelligent Damage Code proposals For Maintenance Notifications



Click [here](#) to watch the video and see how Machine-Learning provides system support.

Key innovations do not reflect licensing

# SAP S/4HANA 2021 for Asset Management

## Innovation Highlights



### Maintenance Execution

#### Inspection checklists for technical objects on maintenance order operation

- Maintain inspection plans as checklist templates
- Enable customer checklist functions for order type or plant combinations and specify object list, checklist generation, and follow-up settings
- Define checklist type on an operation level for checklist generation
- Object list generation manually or automatically at order creation
- Checklist generation manually or automatically at order release or mass processing with new transaction IW92, Checklists: Generation
- System statuses representing status of checklist process
- New tab "Checklists" in maintenance order transactions
- New transaction IW91, Checklists: Result Overview: list display of checklists and functions to record results and make usage decision
- New transaction IW93, Checklists: Collective Usage Decis.: mass processing to make usage decision for checklists, including tolerated defect classes
- Print checklists anytime during the maintenance order process or as a follow-up action after usage decision
- Create measurement documents as a follow-up action after usage decision
- Enable checklist APIs and Archive checklists
- Enable business add-ins (BADIs) for influencing the checklist process

#### Benefit

- Digitize inspections and checks with legally binding documentation
- Reduce efforts for master-data maintenance and operational execution:
- Support an end-to-end process from inspection plan to result recording and follow-up actions
- Develop a lean master data model by defining one inspection plan for a type of checklist for an object type used in the inspection process for all similar technical objects
- Add the ability to analyze the history of checklist results for a technical object

Key innovations do not reflect licensing

This presentation and SAP's strategy and possible future developments are subject to change and may be changed by SAP at any time for any reason without notice. This document is provided without a warranty of any kind, either express or implied, including but not limited to the implied warranties of merchantability, fitness for a particular purpose, or noninfringement.

# SAP S/4HANA 2021 for Asset Management

## Innovation Highlights



### Maintenance Execution

#### Collective time confirmation – enhanced download with selected operation data, on premise

For collective time confirmation, the download was enhanced to:

- Include the data of the selected maintenance order operations
- Better identify the operations for which order confirmations are entered

#### Benefit

- Improved usability due to better identification of downloaded order operations
- Reduced data entry errors

#### Report and Repair Malfunction app – allow assignment of multiple work items to the same maintenance technician

- Ability to assign multiple work items in a single maintenance order to the same maintenance technician in the report-and-repair-malfunction process

#### Benefit

- Increased usability
- Improved process coverage through the ability to assign multiple work items to the same maintenance technician

#### OData API for maintenance order time confirmation (CRUD)

- Create time or final confirmation for a maintenance order and an operation
- Create mass time or final confirmations for multiple maintenance orders and operations
- Cancel time confirmation

#### Benefit

This ODATA V2.0 API provides the following benefits:

- Helps you maintain time or final confirmation for one or more orders and operations, invocable by a remote client
- Supports cancellation of one or more posted time confirmations
- Enables you to filter, search, or sort time confirmations



Key innovations do not reflect licensing

# SAP S/4HANA 2021 for Asset Management

## Innovation Highlights



### Maintenance Execution

Allowing maintenance technicians to access outstanding maintenance jobs and document the executed maintenance work

- A list of outstanding maintenance jobs provided to maintenance technicians
- Detailed view of each maintenance job, including technical object affected, malfunction details (in case of reactive maintenance), supporting documents, or required spare parts
- Entry of time confirmation for the actual work performed
- Ability of authorized maintenance technicians to directly issue reserved as well as unplanned parts from the local warehouse
- Option for each maintenance technician to plan the return of unused spare parts to the warehouse
- Entry of measurement readings related to the technical objects of the specific maintenance job or the maintenance order which have been taken by the maintenance technician during maintenance
- Recording of malfunction details by maintenance technicians after the completion of maintenance work
- Option to create follow-on maintenance request with reference to existing maintenance order / notification

*Note: This feature is designed to work only within the scope of the "best practice" processes for Reactive Maintenance (4HH) and Proactive Maintenance (4HI).*

#### Benefit

- Use a one-stop application to provide the maintenance technician with all information to perform a maintenance job
- Improve usability by renovating the user interface
- Enhance flexibility by enabling the task on different devices such as desktop computers, smartphones, and tablets

Operation	Order	Priority	Assigned To	Subphase
<input type="checkbox"/> Load is dropping 0010	Load is dropping (4001414)	High	maintenance technician new (50004106)	Work in Execution
Latest Scheduled Finish: 09.02.2021, 11:30:00 Planned Effort: 0,0 H				
<input type="checkbox"/> Repair rubber seal 0020	Load is dropping (4001414)	High	maintenance technician new (50004106)	Work in Execution
Latest Scheduled Finish: 11.02.2021, 12:33:45 Planned Effort: 1,0 H				
<input type="checkbox"/> Replace Rubber Seal 0030	Load is dropping (4001414)	High	maintenance technician new (50004106)	Ready for Execution
Latest Scheduled Finish: 11.02.2021, 13:37:30 Planned Effort: 2,0 H				
<input type="checkbox"/> Replace Motor Belt 0070	Load is dropping (4001414)	High	maintenance technician new (50004106)	Work in Execution
Latest Scheduled Finish: 09.02.2021, 13:37:30 Planned Effort: 2,0 H				

**USER EXPERIENCE**

Key innovations do not reflect licensing

# SAP S/4HANA 2021 for Asset Management

## Innovation Highlights



### Maintenance Execution

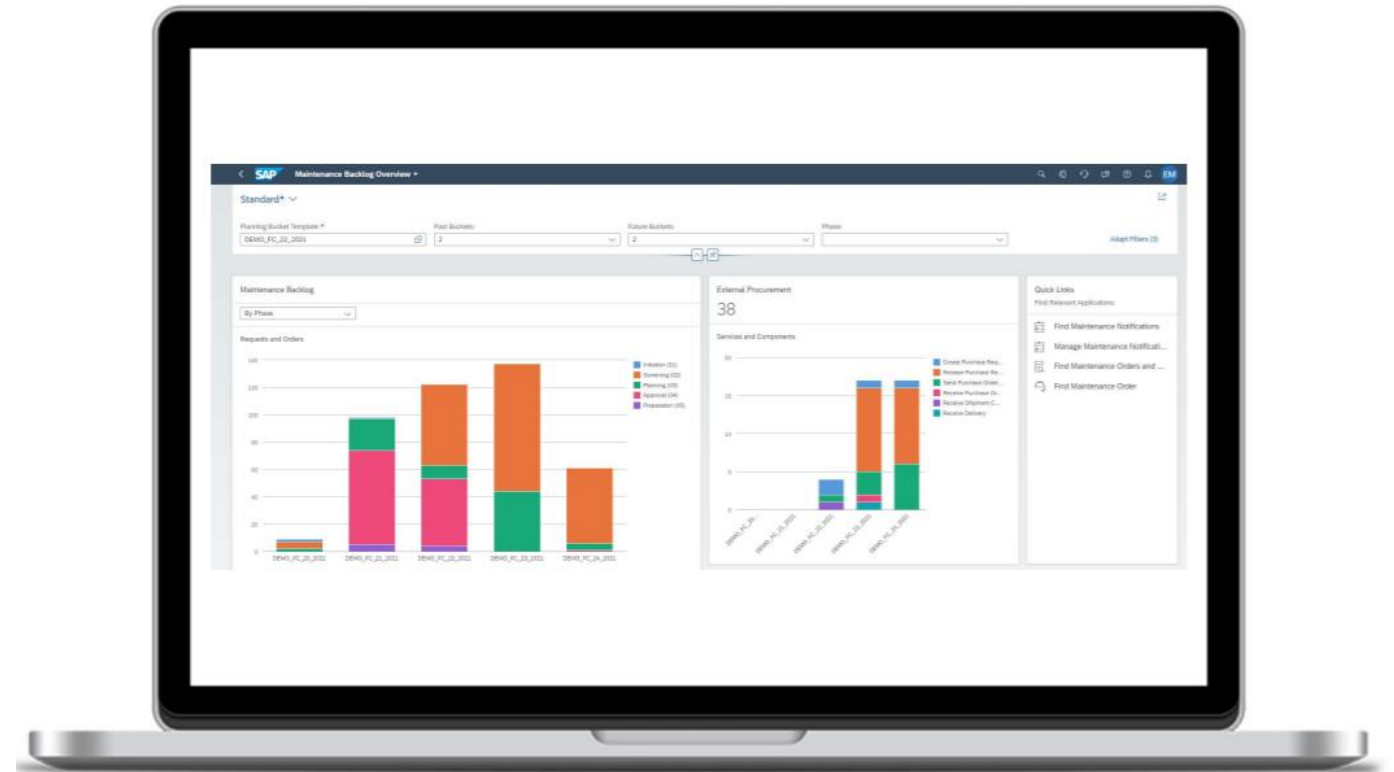
#### Maintenance backlog overview – visibility of procurement of parts and services

Prepare work orders effectively to help ensure streamlined scheduling and execution of maintenance work:

- New analytical card enabling proactive review of procurement processes to buy parts and services
- New rework analysis card identifying repetitive reactive maintenance requests to start identification of potential root causes

#### Benefit

- Improve schedule compliance by proactively preparing resources needed to execute maintenance
- Improve wrench time by ensuring provisioning of all parts and services
- Identify bad actors by recognizing repetitive reactive maintenance requests within a short span of time



Key innovations do not reflect licensing

# SAP S/4HANA 2021 for Asset Management

## Innovation Highlights

### Asset Geospatial Enablement

#### Linear asset management for split or merged technical objects

Functional enhancements in SAP S/4HANA 2021:

- Module for splitting and merging of maintenance notifications and measuring points for split or merged technical objects
- Support change documents for linear characteristics
- Support absolute distance of the markers from the start and end points of the linear data

#### Benefit

- Retain historical maintenance notifications for split and merged linear technical objects
- Transfer measuring points to the new functional locations for a linear functional location split into multiple functional locations
- Ensure that the changes to linear characteristics can be tracked
- Make the nearest marker to the start and end points of the linear data easier to pick

USER  
EXPERIENCE

### Maintenance Demand Processing

#### Long-texts in maintenance notification

Advanced solution for long-text maintenance notifications:

- Option to create separate long texts to parlay different points of information instead of providing a single long text to relay varied information in a single field
- Individualized long texts that serve a certain purpose or describe a particular dimension so that the entered information is aligned for the actual purpose of the long text
- Customers enabled to create their own long texts

#### Benefit

- User support for entering the appropriated information through multiple long texts
- More-efficient analysis of captured information with separate long texts, which leads to better results

USER  
EXPERIENCE

### Maintenance Planning



#### Estimated, planned and actuals costs of resources in maintenance orders

- Collect estimated costs and planned costs based on the planned resources indicated in a maintenance work order
- Identify operational assets that consume large amounts of financial resources
- Monitor actual maintenance costs incurred for each maintenance work order and how far they deviate from planned costs

#### Benefit

- Improved maintenance costs and compliance to the maintenance budget
- Proactive identification of assets performing poorly that require an improved strategy for maintenance or replacement

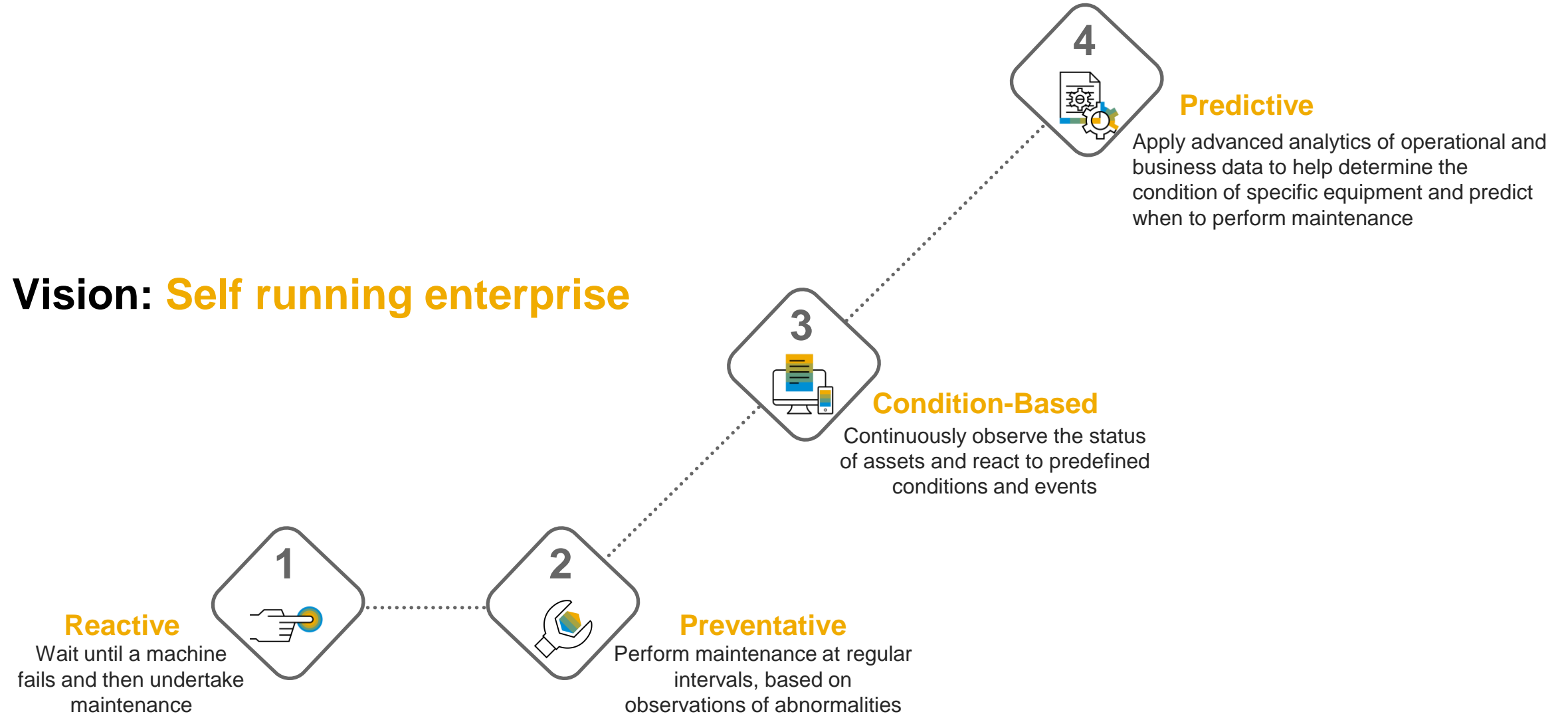
USER  
EXPERIENCE

Key innovations do not reflect licensing



# Maintenance Journey and Asset Optimization

Where are maintenance operations heading?



# Achieving Value with SAP S/4HANA Asset Management



## Ansaldo Energia S.p.A.

### Industry

Cross Industry

### Additional SAP Solutions

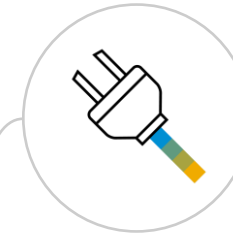
SAP Cloud Platform, SAP Predictive Maintenance and Service

### With SAP S/4HANA, Ansaldo Energia S.p.A. achieved:

- 75% reduction in paper based quality controls
- Expected 5%–8% drop in the cost of equipment maintenance
- 80% less time and effort to onboard new customers in the services portal

Power-generation leader Ansaldo Energia S.p.A. manages complex projects around the world, but suboptimal, siloed processes were limiting operational visibility. The company is rolling out SAP S/4HANA and at the same time, enabling predictive asset service resulting in a dual digital transformation.

[Click here for Ansaldo Energia S.p.A.'s source reference](#)



## Tasmanian Networks Pty. Ltd

### Industry

Utilities

### Additional SAP Solutions

SAP Ariba, SAP SuccessFactors

### With SAP S/4HANA, Tasmanian Networks Pty. Ltd achieved:

- A \$68 million in quantifiable business benefits
- Increased transparency, enabling managers to measure performance
- Better maintenance planning, resulting in fewer power outages

Following a merger of electricity distribution and transmission businesses, Tasmanian Networks Pty. Ltd. needed to establish a single data platform to standardize processes and consolidate more than 60 legacy systems.

[Click here for Tasmanian Networks Pty. Ltd's source reference](#)

# SAP S/4HANA Asset Management Solution Simplification



- **Scheduling of Maintenance Plan** – Transaction IP30 replaced by transaction IP30H ([SAP Note: 2270078](#))
- **Mobile Asset Management (MAM)** - replaced by SAP Work Manager ([SAP Note: 2270080](#))
- **Enterprise Search in EAM** - the search models are now replication free models (using HANA DB tables instead) within SAP Enterprise Asset Management SAP EAM) ([SAP Note: 2270123](#))
- **Changes In List Reports For Order and Notification** - Prerequisite for executing the list reports for orders and notifications in SAP S/4HANA are the performance improvements described in notes 393393 and 551133 ([SAP Note: 2270108](#))
- **Batch Input for Enterprise Asset Management (EAM)** - transaction IBIP is outdated and is being removed ([SAP Note: 2270108](#))
- **Deprecation of EHS Data Series and Amounts** -These data objects were renovated and their information now is stored in different tables ([SAP Note: 2338405](#))
- **Deprecation of 'Inspect Safety Control' Fiori app** ([SAP Note: 2343825](#))
- **Simplification of Authorizations in Incident Management** - the concept was renovated and authorization objects were replaced ([SAP Note: 2350330](#))
- **Changed data model for listed substances** - a new table has been introduced ([SAP Note: 2376165](#))
- Complete list of simplifications see [here](#)



# SAP S/4HANA Asset Management: Fiori Apps

## Maintenance Mgmt.

### Employee - Maintenance Info

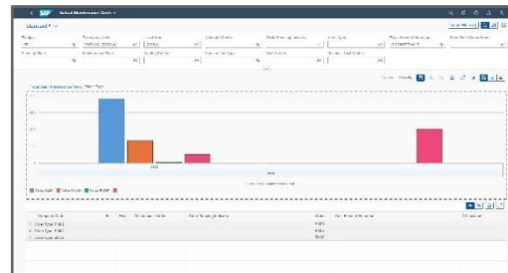
- PM Notification Re-Use Library
- Request Maintenance

### Maintenance Planner

- Actual Maintenance Cost Analysis
- Create Mass Time Confirmations
- Display Maintenance Item (Planner)
- Display Master Data Information Center (Planner)
- Find Maintenance Items
- Find Maintenance Plans
- Maintenance Backlog Overview **NEW**
- Maintenance Planning Overview
- Manage Maintenance Plan and Item List
- Manage Notification List
- Manage Order List
- Manage Orders and Notifications in Information Center
- Mass Schedule Maintenance Plans
- My Inbox – Maintenance Management
- Process Linear Reference Pattern
- Process Maintenance Notification (Planner)
- Process Maintenance Order
- Process Maintenance Plan
- Process Measurement Document (Planner)
- Process Measuring Point
- Process Object Network
- Process Task List (Planner)
- Process Technical Object
- Schedule Material Availability Check **UP**
- Technical Object Breakdown Analysis

### Maintenance Technician

- Confirm Jobs
- Create Maintenance Request **NEW**
- Display Job List
- Display Maintenance Item (Technician)
- Display Maintenance Order
- Display Maintenance Plan
- Display Master Data Information Center (Technician)
- Display Measuring Point
- Display Task List (Technician)
- Display Technical Object
- Find Maintenance Notification **UP**
- Find Maintenance Order
- Find Maintenance Order and Operation
- Find Maintenance Order Confirmation
- Find Technical Object **UP**
- Process Maintenance Notification (Technician)
- Process Measurement Document (Technician)
- Report and Repair Malfunction



## Asset Operations and Maintenance



### Maintenance Planner - Resource Scheduling

- Assign Maintenance Order Operations
- Analyze Work Center Utilization
- Maintenance Scheduling Board **UP**
- Manage Schedules **UP**
- Manage Work Center Utilization **UP**
- Resource Scheduling for Maintenance Planners **UP**
- RSH EAM - Reuse Project **UP**
- Schedule Maintenance Order Operations
- View Maintenance Schedule for Assets **UP**

# Thank you!

Rachel Romanoski

[rachel.romanoski@sap.com](mailto:rachel.romanoski@sap.com)

SAP Solution Management  
Asset & Service Management  
Houston, TX