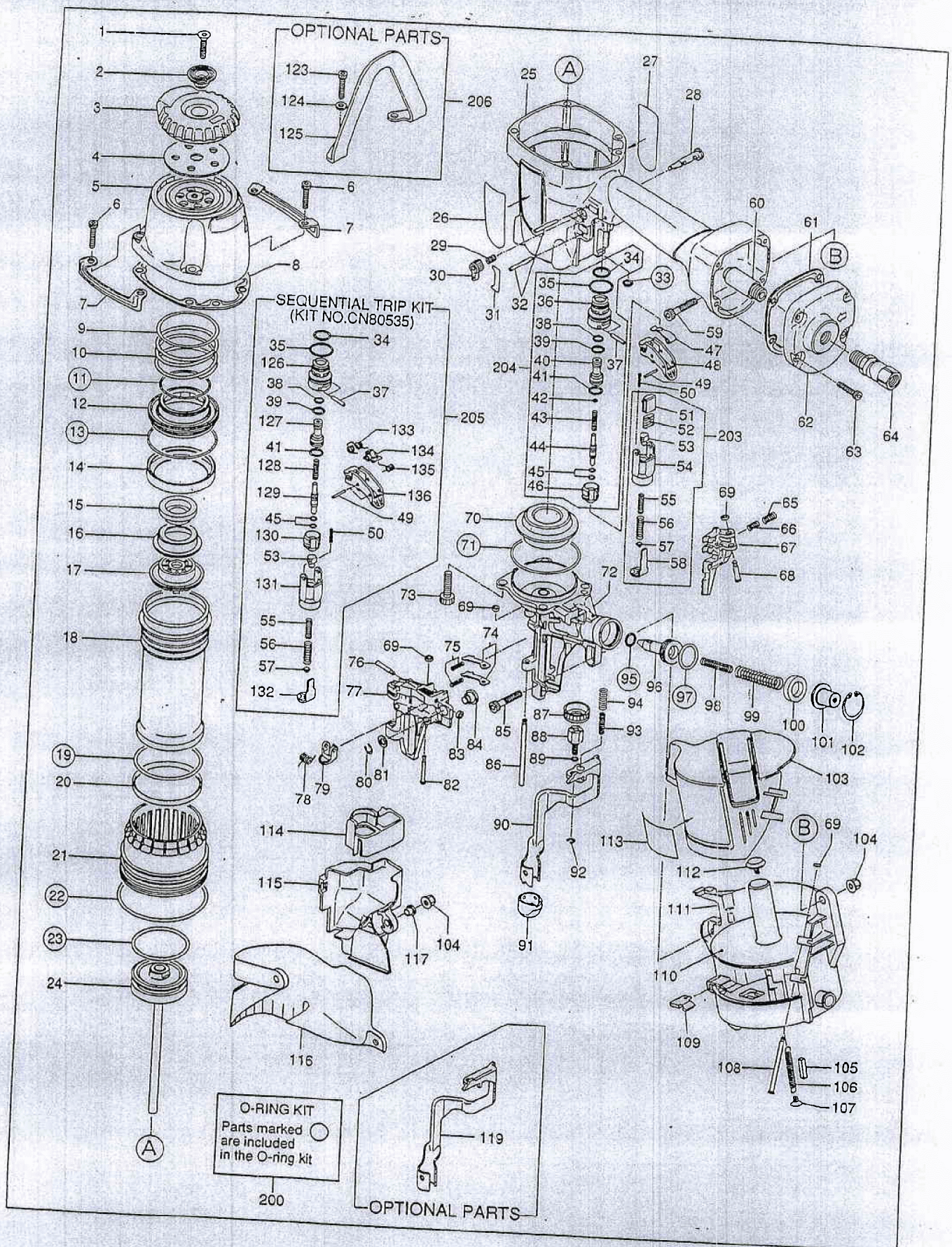


CN890II



MODEL	IND	Code	Old#	Description	Ratio	Min. Order Q'ty	List
CN890II	1	AA82411		SCREW M6X27	1	10	\$0.36
CN890II	2	KN11393		EXHAUST COVER HOLDER	1		\$2.48
CN890II	3	CN35294		EXHAUST COVER	1		\$7.20
CN890II	4	KN11392		FILTER B	1		\$5.50
CN890II	5	KN70016		CYLINDER CAP UNIT	1		\$56.60
CN890II	6	BB40208		SCREW M6X28	10	10	\$0.56
CN890II	7	CN35906		PROTECTOR	1		\$3.26
CN890II	8	CN35298		CYLINDER CAP SEAL	20		\$10.16
CN890II	9	CN35323		PLAIN WASHER	1	10	\$0.56
CN890II	10	KK23713		COMPRESSION SPRING 3713	10		\$1.76
CN890II	11	HH14906		O-RING AS 568-133	10		\$2.44
CN890II	12	KN11391		HEAD VALVE PISTON	1		\$49.60
CN890II	13	HH19161		O-RING A 3.1X66.4	20		\$1.92
CN890II	14	CN35307		HEAD VALVE SEAL	20		\$3.52
CN890II	15	KN11394		PISTON STOP RING	1		\$9.06
CN890II	16	CN35334		PLAIN WASHER	1		\$1.76
CN890II	17	CN35302		PISTON STOP	10		\$6.52
CN890II	18	CN35306		CYLINDER	1		\$34.64
CN890II	19	HH12108		O-RING AG60	1		\$1.64
CN890II	20	CN35325		CHECK VALVE	5		\$2.80
CN890II	21	CN35308		CYLINDER RING	1		\$4.76
CN890II	22	HH12117		O-RING AG85	10		\$1.80
CN890II	23	HH19218		O-RING 4.5X48.7	30		\$4.80
CN890II	24	CN70101		MAIN PISTON UNIT	10		\$53.34
CN890II	25	CN80515		FRAME UNIT	1		\$127.44
CN890II	26	CN35902		NAME PLATE CN890 II(USA)	1		\$2.00
CN890II	27	CN35636		WARNING LABEL(FRAME)	1		\$1.04
CN890II	28	CN35075		TRIGGER LOCK LEVER	1	5	\$1.10
CN890II	29	KK23507		SPRING 3507	1	10	\$0.20
CN890II	30	CN35074		TRIGGER LOCK DIAL	1	5	\$1.10
CN890II	31	CN35681		LABEL B	1		\$1.50
CN890II	32	FF21611		ROLL PIN 3X32 AW	1	10	\$0.20
CN890II	33	HH11105		O-RING AP7	5	10	\$0.20
CN890II	34	HH11125		O-RING AP12	1	10	\$0.44
CN890II	35	HH11138		O-RING AP20	1	10	\$0.44
CN890II	36	CN33909		TRIGGER VALVE HOUSING	1		\$3.04
CN890II	37	FF30161		STRAIGHT PIN 161	1	10	\$0.44
CN890II	38	HH11119		O-RING AP6	20	10	\$0.44
CN890II	39	HH11209		O-RING 1BP7	20	10	\$0.44
CN890II	40	CN35655		PILOT VALVE	1		\$2.32
CN890II	41	HH11113		O-RING AP9	20	10	\$0.44
CN890II	42	CN31436		ORIFICE	10		\$1.44
CN890II	43	KK23814		COMP SPRING 3814	10	10	\$0.80
CN890II	44	CN35128		TRIGGER VALVE STEM.	20		\$2.48
CN890II	45	HH11901		O-RING 1.4 X 2.5	40	10	\$0.20
CN890II	46	CN33910		TRIGGER VALVE CAP	1		\$1.80
CN890II	47	CN35115		CONTACT LEVER	10		\$1.60
CN890II	48	CN35001		TRIGGER	1	10	\$0.88
CN890II	49	FF22402		SPRING PIN 3X16	10	10	\$0.20
CN890II	50	KK23129		COMPRESSION SPRING 3129	10	10	\$0.20
CN890II	51	CN35656		LEVER	10	5	\$0.88
CN890II	52	CN34500		SPRING, LEVER	10		\$2.24
CN890II	53	CN35059		CONTACT ARM GUIDE B	1		\$2.80
CN890II	54	CN35002		CONTACT ARM GUIDE "A"	1		\$1.92
CN890II	55	KK23735		COMPRESSION SPRING 3735	10	10	\$0.36
CN890II	56	KK23736		COMPRESSION SPRING 3736	10	10	\$0.36
CN890II	57	CN35004		CONTACT BUMPER	1	10	\$0.56
CN890II	58	CN35003		CONTACT ARM A	10		\$1.04
CN890II	59	BB40208		SCREW M6X28	1	10	\$0.56
CN890II	60	CN35685		AIR FILTER SA-10	1		\$9.36
CN890II	61	CN35331		END CAP SEAL	10		\$9.84
CN890II	62	CN35686		END CAP	1		\$39.56
CN890II	63	BB40210		SCREW M5X20	10	10	\$0.44
CN890II	64	TT05426		SWIVEL PLUG FMP3B	1		\$48.04
CN890II	65	KK23710		COMP. SPRING 3710	20		\$2.00

Prices on the left side have been changed.

MODEL	IND	Code	Old#	Description	Ratio	Min. Order Q'ty	List
CN890II	66	KK23788		COMP. SPRING 3788	20		\$1.26
CN890II	67	CN35896		FEED PAWL	1		\$33.50
CN890II	68	FF42216		STEP PIN 2216	1		\$3.00
CN890II	69	EE39602		WASHER 7	10	10	\$0.44
CN890II	70	CN35327		BUMPER	10		\$7.72
CN890II	71	HH14729		O-RING AS568-144	10		\$1.44
CN890II	72	CN35895		NOSE	1		\$247.84
CN890II	73	BB40221		SCREW M8X25	10	10	\$0.56
CN890II	74	CN35898		CHECK PAWL	1		\$1.50
CN890II	75	KK23802		COMP SPRING	10		\$2.26
CN890II	76	FF41599		STEP PIN 1599	1		\$2.44
CN890II	77	CN35897		DOOR	1		\$90.44
CN890II	78	KK33261		TORSION SPRING 3261	1	10	\$0.36
CN890II	79	CN33679		DOOR LUTCH	1		\$10.04
CN890II	80	JJ10405		E-RING 4	10	5	\$0.26
CN890II	81	EE39814		PLAIN WASHER D	1	5	\$0.26
CN890II	82	FF41258		STEP PIN 1258	1		\$2.48
CN890II	83	EE39609		RUBBER WASHER 1.8X6X2	10	10	\$0.72
CN890II	84	FF41837		STEP PIN 1837	1		\$3.06
CN890II	85	BB40487		SCREW M6X35	1	10	\$0.44
CN890II	86	FF31520		STRAIGHT PIN 1520	1		\$1.76
CN890II	87	CN35007		ADJUST DIAL	1	10	\$0.88
CN890II	88	CN35337		CONTACT ARM C	1		\$6.52
CN890II	89	HH11903		O-RING 1A 1.2 X 4	1	10	\$0.44
CN890II	90	CN70047		CONTACT ARM B UNIT	5		\$44.70
CN890II	91	CN35904		CONTACT TOP	1		\$5.80
CN890II	92	JJ10404		E-RING 3.2	10	10	\$0.20
CN890II	93	KK23792		COMPRESSION SPRING 3792	5		\$1.26
CN890II	94	KK23793		COMPRESSION SPRING 3793	5		\$1.26
CN890II	95	HH11132		O-RING 1AP10A	10	10	\$0.44
CN890II	96	CN35314		FEED PISTON	10		\$12.60
CN890II	97	HH11143		O-RING AP21	10	10	\$0.64
CN890II	98	KK23737		COMPRESSION SPRING 3737	10	5	\$1.04
CN890II	99	KK23225		SPRING 3225	10	10	\$0.44
CN890II	100	CN31570		FEED PISTON STOP	10		\$1.80
CN890II	101	CN31571		SPRING COLLAR	5		\$2.24
CN890II	102	JJ22407		C-RING 26	10	10	\$0.64
CN890II	103	CN35651		MAGAZINE COVER	1		\$5.96
CN890II	104	CC00402		ELASTIC STOP NUT M6X1	5	10	\$0.44
CN890II	105	CN30601		SPACER	1	5	\$0.20
CN890II	106	KK13144		SPRING 3144	1	10	\$1.00
CN890II	107	CN30602		RECEIVER, SPRING	1	5	\$0.80
CN890II	108	FF41287		STEP PIN 1287	1	5	\$1.20
CN890II	109	CN35340		MAGAZINE WEAR CLIP	10		\$1.60
CN890II	110	CN35318		NAIL SUPPORT	10		\$3.68
CN890II	111	CN35317		MAGAZINE	5		\$13.64
CN890II	112	CN31963		POST CAP	5		\$1.44
CN890II	113	CN35905		WARNING LABEL	1		\$2.00
CN890II	114	CN35899		SPACER	1		\$2.80
CN890II	115	CN35632		COVER	1		\$4.20
CN890II	116	CN35915		DUST COVER	20		\$4.80
CN890II	117	CN30707		COLLAR	1	5	\$0.80
CN890II	119	CN70124		CONTACT ARM C (FLAT)			\$163.04
CN890II	123	BB40211		BOLT 6X35		10	\$1.28
CN890II	124	EE33111		PLAIN WASHER 6		10	\$0.20
CN890II	125	CN35642		HANGER			\$39.36
CN890II	126	CN31323		TRIGGER VALVE HOUSING			\$3.04
CN890II	127	CN33627		PILOT VALVE		5	\$2.80
CN890II	128	KK24123		COMPRESSION SPRING 4123		10	\$0.88
CN890II	129	CN33723		TRIGGER VALVE STEM		5	\$2.00
CN890II	130	CN31346		TRIGGER VALVE CAP			\$1.64
CN890II	131	CN35139		CONTACT ARM GUIDE "C"			\$1.76
CN890II	132	CN35140		CONTACT ARM A			\$6.12
CN890II	133	KK33247		SPRING 3247			\$2.24
CN890II	134	TA16138		S.T. LEVER			\$26.08

Prices on the left side have been changed.

Feb. 2002

MODEL	IND	Code	Old#	Description	Ratio	Min. Order Q'ty	List
CN890II	135	KK33144		TORSION SPRING 3144			
CN890II	136	CN35548		TRIGGER			\$2.00
CN890II	200	CN80607		O-RING KIT FOR CN890S			\$3.50
CN890II	203	CN81013		ARM GUIDE KIT			\$20.00
CN890II	204	CN80546		TRIGGER VALVE KIT(CN890S)			\$21.26
CN890II	205	CN80535		SEQUENTIAL TRIP KIT			\$14.64
CN890II	206	CN80532		HANGER KIT			\$41.20
							\$48.64

Prices on the left side have been changed.