

CAMPBELL

WOMEN'S BASKETBALL

CAMPBELL vs. MONMOUTH/WILLIAM & MARY

Feb. 16 & 18 | 7:00 PM & 2:00 PM

Gore Arena

Buies Creek, N.C.

CAMPBELL

OVERALL: 12-10

CAA: 5-6 | Non-Conference: 7-4
Home: 7-2 | Away: 3-8 | Neutral: 2-0

NOVEMBER

Mon.	6	NC WESLEYAN.....	W, 108-37
Thu.	9	at Coppin State.....	W, 68-55
Sun.	12	at Virginia.....	L, 49-74
Sat.	18	WESTERN CAROLINA.....	W, 70-52
Thu.	23 #	vs. Morgan State.....	W, 60-46
Fri.	24 #	vs. Western Michigan.....	W, 70-61

DECEMBER

Sun.	3	UCF.....	L, 41-42
Tue.	5	NC CENTRAL.....	W, 74-61
Thu.	14 %	LANCASTER BIBLE.....	W, 99-28
Sun.	17	at ETSU.....	L, 39-54
Thu.	21	at High Point.....	L, 47-48

JANUARY

Fri.	5 *	at Stony Brook.....	L, 43-73
Sun.	7 *	at Monmouth.....	L, 47-49
Fri.	12 *	ELON.....	L, 44-45
Sun.	14 *	TOWSON.....	W, 69-59
Fri.	19 *	at UNCW.....	L, 58-69
Sun.	21 *	STONY BROOK.....	W, 75-73
Fri.	26 *	NC A&T.....	L, 51-73
Sun.	28 *	at NORTHEASTERN.....	W, 54-43

FEBRUARY

Sun.	4 *	at Elon.....	W, 53-35
Fri.	9 *	UNCW.....	W, 77-57
Sun.	11 *	at Charleston.....	L, 51-65
Fri.	16 *	MONMOUTH.....	7:00 PM
Sun.	18 *	WILLIAM & MARY.....	2:00 PM
Sun.	25 *	HOFSTRA.....	2:00 PM

MARCH

Fri.	1 *	at Delaware.....	7:00 PM
Sun.	3 *	at Drexel.....	2:00 PM
Thu.	7 *	CHARLESTON.....	7:00 PM
Sat.	9 *	at Hampton.....	4:00 PM
Wed.	13	CAA Championship - First Round	
Thu.	14	CAA Championship - Second Round	
Fri.	15	CAA Championship - Quarterfinal	
Sat.	16	CAA Championship - Semifinal	
Sun.	17	CAA Championship - Final	

ALL TIMES [EST] | ALL CAPS = home game at Gore Arena

= Puerto Rico Clasico | % = Education Day
* = CAA conference game

CAA STANDINGS [2023-24] AS OF 2/14

School	Conf.	Pct.	Overall	Pct.	Streak
Stony Brook	9-2	.818	19-3	.864	W1
NC A&T	9-2	.818	15-7	.682	W1
Charleston	8-3	.727	16-6	.727	W2
William & Mary	8-3	.727	12-10	.545	W3
Monmouth	7-4	.646	14-8	.636	L1
Drexel	5-5	.500	10-11	.476	L2
Towson	5-6	.455	13-9	.591	L1
Campbell	5-6	.455	12-10	.545	L1
Delaware	5-6	.455	9-14	.391	W1
Northeastern	4-7	.364	8-13	.381	L3
Elon	4-7	.364	8-16	.333	L1
UNCW	3-8	.273	5-17	.227	W1
Hofstra	2-8	.200	8-13	.381	W1
Hampton	2-9	.182	2-19	.095	L4

GAMES 23 & 24



VS



CAMPBELL FIGHTING CAMELS (12-10, 5-6)

Head Coach: Ronny Fisher (Furman '90)
Record at Campbell: 147-86 (Eighth season)
Career Record: 244-230 (16th season)
2022-23 Record: 16-15, 10-8 (Big South)

MONMOUTH HAWKS (14-8, 7-4)

Head Coach: Ginny Boggess (Wingate '03)
Record at Monmouth: 46-40 (Third season)
Career Record: Same
2022-23 Record: 18-16, 9-9 (CAA)

WILLIAM & MARY TRIBE (12-10, 8-3)

Head Coach: Erin Dickerson Davis (Northwestern '09)
Record at W&M: 30-23 (Second season)
Career Record: Same
2022-23 Record: 18-13, 12-6 (CAA)

NEWS AND NOTES

NATIONALLY RANKED DEFENSE

- Campbell is the **only program in the nation** to be ranked in the top-25 in scoring defense in each of the past seven seasons. UConn is the next closest program to accomplish the feat, having done so in six of the past seven seasons
- Campbell has held 42 opponents to 40 points or less and 102 opponents to 50 points or less in the Ronny Fisher era (since 2016-17)
- This season Campbell ranks:
 - 11th nationally** in scoring defense (54.5 points per game allowed)
 - 22nd nationally** in field goal percentage defense (36.4%)
 - 7th nationally** in three-point percentage defense (25.3%)
- Additionally, Campbell ranks **15th nationally** giving up only 13.3 fouls per game

- The Hawks are coming off a 71-67 loss to Delaware
- Monmouth ranks 5th nationally averaging 6.0 blocks per game while its three-point percentage defense (26.0%) ranks 15th
- Kaci Donovan leads Monmouth averaging 12.7 points
- The Hawks are led by third-year head coach Ginny Boggess
- William & Mary enters 12-10 overall and 8-3 in league play
- The Tribe are on a three-game win streak featuring wins over Drexel, Delaware and Hampton
- Graduate transfer and forward Nylah Young leads the Tribe averaging 14.4 points and 5.0 boards while shooting a CAA-best 91.1 percent on free throws
- William & Mary is led by second-year head coach Erin Dickerson Davis

LAST TIME OUT

- Charleston defeated Campbell 65-51 last Sunday afternoon at TD Arena
- Shy Tuelle led the Camels with 11 points and five rebounds while both Brittany Staves and Jessica Woods added eight points each.
- Charleston used a 10-0 run and jumped out to a 21-12 lead after the first quarter and 36-22 at the half. The Cougars led by as many as 20 and shot 45.6 percent (26-of-57) from the floor and 40.0 percent (8-of-20) from three
- The Camels made 39.1 percent (18-of-46) from the field and 33.3 percent (8-of-24) from three. Charleston scored 26 points off 22 turnovers and held a 36-22 advantage in points in the paint and 12-2 on breaks

SCOUTING THE OPPONENTS

- Monmouth enters 14-8 overall and 7-4 in conference games

SERIES HISTORY

- The Camels face Monmouth for the second time ever. The Hawks won the first matchup between both teams earlier this season, 49-47.
- Campbell faces William & Mary for just the third time in program history and the first since 2007. The Tribe has won both of the previous matchups.

A WIN ON FRIDAY/SUNDAY WOULD...

- Be the 799th & 800th wins in program history (798-604)
- Be head coach Ronny Fisher's 245th & 246st career victories (244-230)
- Be Coach Fisher's 148th & 149th wins at Campbell (147-86)

CAMPBELL PROBABLE STARTERS

Pos.	Name	Yr.	PPG	RPG	APG	Notable
G	Shy Tuelle	Gr.	9.1	3.2	1.6	Program leader for 3-pointers (273), ranks 5th in CAA with 52 threes this year
F	Brittany Staves	Gr.	8.0	3.1	1.7	Has scored in double-figures in 5 of past 7 games
G	Gemma Nunez	So.	5.9	4.7	3.4	Ranks 9th in CAA w/ 3.4 assists per game, 6th with 1.32 assist-to-turnover ratio
F	Christabel Ezumah	Sr.	12.6	7.9	1.3	Ranks 25th nationally shooting 57.6 from the field... 3rd in CAA with 7.9 RPG, 1.64 BPG
F	Svenia Nurenberg	Gr.	5.8	4.8	2.0	Has recorded 5 assists in three of past four games

CAMELS

NEWS AND NOTES

TEAM INFORMATION

Conference	CAA
2022-23 Record	16-15
2022-23 Big South Record / Finish	10-8/3rd
Letterwinners Returning / Lost	10/1
Starters Returning / Lost	4/1
Newcomers	4

BASKETBALL STAFF

Head Coach	Ronny Fisher (Furman '90)
Career Record / Seasons	244-230 / 16
Record at Campbell / Seasons	147-86 / 8
Associate Head Coach	Megan Hall (Carson Newman '03)
Assistant Head Coach	Lindsay Bowen (Michigan State '06)
Assistant Coach	Lakeisha Gregory (Austin Peay '19)
Director of Operations	Jalen Latta
Director of Scouting & Video Operations	Trevor Ray
Strength & Conditioning	Alex Keough
Minister of Culture	Greg Kuras
Athletic Communications	Tristan Elledge
Creative Content	Logan "Beast" Adams
Director of Marketing	Ryan Decker

PROGRAM HISTORY

First Year of Varsity Competition	1972-73
All-Time Varsity Record	798-604 (.567)
Conference Tournament Championships (Last)	2 (1999-00)
Conference Regular Season Championships (Last)	5 (2021-22)
NCAA Tournament Appearances (Last)	1 (2000)
WNIT Appearances (Last)	1 (2022)

HOME GAMES

Arena	Gilbert Craig Gore Arena in the John W. Pope, Jr. Convocation Center
Year Opened	2008
Capacity	3,095

ABOUT CAMPBELL

Location	Buies Creek, N.C.
Founded	1887
Enrollment	6,200
Campus	600 acres
President	J. Bradley Creed, Ph.D.
Nickname	Fighting Camels
Colors	Orange (PMS 158) & Black
Mascots	Gaylord & Gladys
Director of Athletics	Hannah Bazemore Sr.
Associate AD/SWA	Wanda Watkins Sr.
Associate AD/External Affairs	Chris Hemeyer Sr.
Associate AD/Advancement	Nathan Rice
Faculty-Athletics Rep	Sal Mercogliano, Ph.D.
Associate AD/Communications & Branding	Jason Williams
Associate AD/Marketing	Matt Lavery
Associate AD/Compliance	Melissa Wendt
Associate AD/Student-Athlete Support	Jared Fries
Associate AD/Student-Athlete Development	Dr. Andrew Carter
Director of Creative Content	Brooke Brown
Director of Business and Game Operations	Shelby Denkert
Director of Sales	Mike "Show Me The Money" Miller
Director of Ticket Sales and Service	Aaron Freeman

NOT SHY ABOUT SCORING

- Shy Tuelle (1,313 career points) moved into 10th on Campbell's all-time scoring list against NC A&T on Jan. 26 and hit 1,300 points against UNCW on Feb. 9
- Tuelle surpassed both Ronda Mueller (1978-82) and former teammate Taya Bolden (2016-22) and is closing in on Summer Price (2014-18) in 9th on the list with 1,355

SCORE 60 AND WIN

- Campbell is undefeated in games this year when it scores 60 points or more (10-0) and has scored over 60 in all but two wins this season

NUNEZ DROPPING DIMES

- Sophomore point guard Gemma Nunez dealt a career-best seven assists at UNCW (1/19)
- The Almeria, Spain native who leads the Camels averaging 31.6 minutes per game (including 33.9 minutes in conference games) ranks 9th in the CAA averaging 3.4 assists, 6th with a 1.32 assist/turnover ratio and has recorded 5+ assists in four games this season

SHARPSHOOTING SHY

- The program leader for three-pointers made, Shy Tuelle has remained as one of the best shooters from behind the arc in the nation
- Tuelle ranks 5th in the CAA shooting 36.9 from behind the arc and 4th in the league with 52 threes made on the year, averaging 2.36 per game
- The Hampton, Tenn. native has totaled 273 threes in her career and is one of 22 active Division-I players to have made 270 or more career three-pointers

EZUMAH EFFICIENCY

- Ezumah is one of the most efficient forwards in the nation, ranking 25th nationally this season shooting 57.6 from the field
- She ranks 17th amongst active Division-I players shooting 59.4 percent from the field for her career
- Despite playing the fifth-most minutes per game (23.8) on the team, Ezumah leads Campbell averaging a near double-double behind 12.6 points per game and 7.9 rebounds

ADVANTAGE IN THE CREEK

- Under head coach Ronny Fisher, Campbell has compiled a 99-32 (.759) record at home in Buies Creek including a 49-15 (.774) mark over the past four seasons
- Over the past seven seasons, Campbell has held foes to 49.4 points per game and outscored its opponents by an average of 12.0 points when playing inside Gore Arena
- Since the 2016-17 season, the Camels have held foes to 40 points or less 28 times at home
- Campbell finished non-conference play this season with a perfect 4-0 record and are currently 7-2 in The Creek this season

BLOCKING MACHINE

- Christabel Ezumah (115 career blocks) has

recorded four or more blocks in four games this season and ranks 57th nationally and 3rd in the CAA averaging 1.64 blocks per game

- She moved into 2nd on Campbell's all-time blocks list recording her 112th block against Northeastern on Jan. 28
- Ezumah previously recorded her 100th block against ETSU on Dec. 17 and moved into third on the program's all-time block list after recording her 102nd block at Stony Brook on Jan. 5
- Amanda Coffey (2013-16) owns the program record for career blocks at 163

HEAD COACH RONNY FISHER

- A three-time Big South Coach of the Year, Ronny Fisher is in his eighth season at the helm of Campbell women's basketball
- Over the previous seven seasons Campbell has won 135 games for an average of 19 wins per season
- Before leaving the Big South for the CAA, Fisher was the longest-tenured Big South coach in his 15th season and led all active coaches in the league with 232 wins overall including 146 in Big South play before the 2023-24 season
- Under Fisher, the Camels claimed the 2019-20 and 2021-22 Big South regular season titles and finished as Big South tournament runners-up in 2019, 2021 and 2022
- Fisher has also led Campbell to its first-ever WNIT berth in 2021-22 along with two other postseason appearances in the WBI. He helped the Camels claim their first ever postseason win in the 2019 WBI
- Previously served as head coach at Presbyterian (2008-16)

UP NEXT

- Campbell takes next Friday off before hosting Hofstra on Sunday, Feb. 25

500 REBOUND CLUB

- Both Christabel Ezumah and Shy Tuelle joined the 500 career rebound club on Jan. 19 at UNCW
- Ezumah and Tuelle become the 24th and 25th Camels to achieve 500 boards and are the first to reach the mark since Taya Bolden (2016-22)

EZUMAH'S CAREER OUTINGS

- Senior forward Christabel Ezumah has set new scoring career-highs twice to close out January
- Ezumah went 10-for-17 from the field and finished with a career-high 28 points in a win over Stony Brook on Jan. 21
- She previously scored a career-high 24 points as Campbell snapped a 5-game losing streak in a 69-59 win over Towson on Jan. 14

STAFF PROMOTIONS

- Head coach Ronny Fisher announced staff promotions for two of his assistant coaches at the beginning of 2024
- Megan Hall was promoted to Associate Head Coach. The longest tenured member of the Camels' coaching staff, Hall spent 11 seasons as an assistant under legendary coach Wanda Watkins prior to joining Fisher's staff. Hall serves as

CAMELS

NEWS AND NOTES CONTINUED

CAMPBELL IN 2023-24

Leading at the half	10-4
Trailing at the half	2-6
Tied at the half	0-0
In overtime	1-0
Shooting 50 percent or better from the field	4-0
Shooting between 40-50 percent	7-2
Shooting less than 40 percent	1-8
Opponent shoots 50 percent or better	1-0
Opponent shoots between 40-50 percent	3-5
Opponent shoots less than 40 percent	9-4
Campbell outrebounds opponents	10-3
Opponent outrebounds Campbell	2-5
Teams are tied in rebounds	0-2
Campbell has 10 more steals	3-1
Campbell shoots 70 percent or better on free throws	3-3
Campbell makes six or more 3-pointers	8-5
Campbell makes 10 or more 3-pointers	4-0
Opponent makes six or more 3-pointers	5-3
Campbell has 15 turnovers or fewer	6-2
Campbell has more than 15 turnovers	6-8
Campbell forces 15 or more opponent turnovers	5-3
Campbell has fewer turnovers than opponents	4-1
Campbell has more turnovers than opponents	8-9
Turnovers between teams are equal	0-0
Campbell bench outscores opponent bench	11-6
Campbell outscores opponent in the paint	11-2
Campbell has more fast break points than opponent	8-0
Campbell has more points off turnovers than opponent	8-1
Campbell has more second chance points than opponent	8-2
Playing at home	7-2
Playing on the road	3-8
Playing on a neutral floor	2-0
Game is decided by 1-5 points	1-4
Game is decided by 6-9 points	1-0
Game is decided by 10-14 points	5-1
Game is decided by 15+ points	5-4
Playing at night (6 PM or later)	3-5
Playing in the afternoon (before 6 PM)	8-5
Playing in the morning (before noon)	1-0
One player in double figures	2-5
Two players in double figures	3-5
Three players in double figures	3-0
Four or more players in double figures	4-0
Wearing white unis	7-1
Wearing orange unis	0-2
Wearing black unis	4-7
Wearing pink unis	1-0
In November	5-1
In December	2-3
In January	3-5
In February	2-1
In March	0-0
On Sunday	4-5
On Monday	1-0
On Tuesday	1-0
On Hump Day	0-0
On Thursday	3-1
On Friday	2-4
On Saturday	1-0

recruiting coordinator, works on the development of the program's post players and is involved in all aspects of the program

- Lindsay Bowen was promoted to Assistant Head Coach. Bowen joined Campbell ahead of the 2016-17 season after previously serving as an assistant under Fisher at Presbyterian College for one season. Assisting with all aspects of the program, Bowen works with perimeter players

WANDA WATKINS COURT

- Campbell dedicated its home court at Gore Arena to legendary student-athlete, coach and administrator Wanda Watkins is who set to retire from Campbell Athletics effective at the end of the 2023-24 academic year.
- A fixture in the Fighting Camel Athletics program for the last four decades, Watkins currently serves as Senior Associate Athletics Director and Senior Woman Administrator. After a 37-year coaching career, she moved into athletics administration at her alma mater in September 2016
- For 35 seasons, Watkins served as head coach of the Campbell women's basketball team before moving to an administrative position in June of 2016. While in charge of the Camels on the court, Watkins led her teams to 549 victories, 10 appearances in Division I conference championship games and the program's first-ever trip to the NCAA tournament

TUELLE REACHES 1,200 POINTS

- Shy Tuelle became the 15th Camel to break the 1,200 point barrier after reaching the mark in a 99-28 win over Lancaster Bible on Dec. 12, 2023
- The program's all-time leader in 3PM, Tuelle scored her 1,200th point with a three-pointer early in the 2Q

SVEN POSTS CAREER HIGH AGAIN

- Fifth-year guard Svenia Nurenberg poured in a career-high 17 points in Campbell's 74-61 win over NC Central on Dec. 5
- A native of Bergem, Luxembourg, Nurenberg previously set her career best with 16 points, including 10 in the final quarter, in Campbell's win over Western Michigan on Nov. 24

STAVES' CAREER NIGHT

- Brittany Staves' 25 points at Coppin State (Nov. 9) marked a new career-high for the fifth year Camel from nearby Raleigh, N.C.
- Staves scored 17 of her 25 in the first half and made 9-of-10 shots from the field, 5-of-5 from three and 2-of-3 from the charity stripe
- She became the first Camel to score 25+ since former guard Luana Serranho (2018-22) dropped 26 in a win against Hampton on Jan. 24, 2022

CAMPBELL NOTABLES

- Return 10 of 11 players from last year's team that finished 16-15 overall and 10-8 in Big South Conference play
- Campbell's leading returning scorers and rebounders include preseason All-CAA selections Shy Tuelle (13.0 ppg, 4.3 rpg) and Christabel Ezumah (10.6 ppg, 9.2 rpg) along with Brittany Staves (9.3 ppg, 4.7 rpg)
- Added freshmen guards Jessica Woods (Columbia, S.C.), Hadleigh Dill (Candler, N.C.) and forward Peris Smith (Graniteville, S.C.) along with senior walk-on guard Taylor Cotter (Fairfax, Va.)
- Voted to finish 10th out of 14 teams in the CAA preseason poll

CAMELS IN THE CAA

- The 2023-24 season marks the first for Campbell as members of the Coastal Athletic Association after departing for the league this past summer from the Big South
- Full CAA membership includes College of Charleston, Delaware, Drexel, Elon, Hampton, Hofstra, Monmouth, North Carolina A&T, UNC Wilmington, Northeastern, Stony Brook, Towson and William & Mary
- Monmouth won the CAA Championship last season to earn the conference's automatic bid to the NCAA Tournament
- Towson and Drexel both earned bids to the WNIT

STRENGTH IN RETURNERS

- Entering the 2023-24 season, Campbell returns 10 of 11 letterwinners from last season with the lone departure being guard Erika Joseph who graduated last May
- Overall, Campbell returns:
 - 88.1% of its minutes (5,463 of 6,200 minutes)
 - 88.4% of its scoring (1,595 of 1,803 points)
 - 94.6% of its rebounding (1,166 of 1,232 rebounds)
 - 94.3% of its assists (367 of 389 assists)
 - 89.7% of its steals (176 of 196 steals)
 - 99.2% of its blocks (127 of 128 blocks)
- Campbell also returns its top four scorers (Ezumah, Staves, Boone, Fuller) and top five rebounders (Ezumah, Fuller, Nurenberg, Staves, Boone)

CAMELS

NEWS AND NOTES CONTINUED

DOUBLE-DIGIT PERFORMANCES

Double-Doubles	2023-24	Career
Christabel Ezumah	5	13
Svenia Nurenberg	-	1
Brittany Staves	-	1
Shy Tuelle	-	2

Scoring	2023-24	Career
Gianni Boone	6	19
Courtney Dahlquist	-	4
Hadleigh Dill	1	1
Christabel Ezumah	14	35
Sarah Hammack Fitzgerald	2	4
Audrey Fuller	3	11
Gemma Nunez	2	2
Svenia Nurenberg	3	13
Brittany Staves	7	38
Shy Tuelle	11	67
Jessica Woods	2	2

20-point games	2023-24	Career
Gianni Boone	-	1
Christabel Ezumah	4	7
Audrey Fuller	-	1
Sarah Fitzgerald	-	1
Brittany Staves	1	2
Shy Tuelle	-	8

Rebounding	2023-24	Career
Hadleigh Dill	1	1
Christabel Ezumah	5	17
Gemma Nunez	2	2
Svenia Nurenberg	1	2
Brittany Staves	-	1
Shy Tuelle	-	4

RECORD BOOK CLIMBERS

POINTS

8. Sharon Williams (1979-83)	1,407
9. Summer Price (2014-18)	1,355
10. Shy Tuelle (2018-Pres.)	1,313
11. Taya Bolden (2016-22)	1,278
12. Ronda Mueller (1978-82)	1,276

THREE-POINT FIELD GOALS MADE

1. Shy Tuelle (2018-Pres.)	273
2. Caroline Bowns (2015-19)	176
3. Summer Price (2014-18)	168
4. Kate Cloxton (2008-12)	156
5. Sara Moore (1997-01)	145

BLOCKS

1. Amanda Coffey (2013-16)	163
2. Christabel Ezumah (2020-pres.)	115
3. Kiera Gaines (2011-15)	111
4. Lauren McNamara-Clement (2017-21)	101
5. Felicia Autry (1994-98)	94

TUELLE RETURNS

- Shy Tuelle returns to the Camels for her sixth season
- Her 2022-23 season came to an end just seven games in after suffering an injury that put her out for the final 24 games last season
- Before her injury, Tuelle ranked No.2 in the nation with 3.7 threes per game, No. 5 shooting 56.5% from behind the arc and No. 15 with 26 made threes
- Tuelle is the program's all-time leader in 3-pointers made with 228 and ranks 16th on the all-time scoring list with 1,136 points

EMERGENCE OF EZUMAH

- Senior forward Christabel Ezumah blossomed into one of Campbell's top options on both ends of the court in 2022-23
- Ezumah started all 31 games last season and set career-highs averaging 10.6 points, 9.2 rebounds and 1.9 blocks
- An All-Big South first team selection, Ezumah scored in double-figures 18 times and had two 20-point outbursts against UCF and Gardner-Webb

CAA PRESEASON POLL

- 1. Towson (9 first-place votes) - 163 points... 2. Stony Brook (2) - 139... 3. Northeastern (2) - 138... 4. Delaware - 123... 5. Charleston (1) - 117... 6. Monmouth - 115... 7. Drexel - 104... 8. North Carolina A&T - 103... 9. William & Mary - 75... **10. Campbell - 68...** 11. Elon - 56... 12. Hofstra - 33... 13. Hampton - 28... 14. UNCW - 21...

#WEDEFEND

Campbell is the only program to rank in the top-25 in scoring defense in each of the past seven seasons:

- 2022-23 - 52.5 PPG - 8th
- 2021-22 - 53.4 PPG - 9th
- 2020-21 - 52.3 PPG - 5th
- 2019-20 - 52.3 PPG - 4th
- 2018-19 - 56.3 PPG - 18th
- 2017-18 - 51.9 PPG - 3rd
- 2016-17 - 49.6 PPG - 1st

The Camels have also ranked in the national top-30 in field goal percentage defense in six of the past seven seasons:

- 2022-23 - 35.1% - 8th
- 2021-22 - 38.5% - 105th
- 2020-21 - 35.0% - 14th
- 2019-20 - 35.9% - 26th
- 2018-19 - 36.1% - 20th
- 2017-18 - 34.9% - 6th
- 2016-17 - 36.6% - 29th

And in the top-30 in 3-point field goal percentage defense in five of the past six seasons:

- 2022-23 - 28.6% - 60th
- 2021-22 - 26.3% - 13th
- 2020-21 - 26.8% - 23rd
- 2019-20 - 27.7% - 29th
- 2018-19 - 26.5% - 8th
- 2017-18 - 26.9% - 7th

CAMELS WORLDWIDE

- Campbell's 2022-23 roster features players from seven different states and three different countries including Spain, Luxembourg and Australia

2022-23 SEASON RECAP

- Finished 16-15 overall, 10-8 in Big South games
- Reached the semifinals of the Big South Championship for a fourth straight time
- Christabel Ezumah was named All-Big South first team
- Brittany Staves was named honorable mention all-conference and Scholar-Athlete of the Year
- Gianni Boone was named to the all-freshman team
- Finished the season nationally ranked No. 5 in scoring defense (52.5 ppg allowed), No. 8 in field goal percentage defense (35.1%) and No. 12 in rebound margin (8.4)
- Ezumah ranked No. 30 nationally averaging 1.9 blocks and No. 48 with 9.2 rebounds

CAMELS

NEWS AND NOTES CONTINUED

WHY THE FIGHTING CAMELS?

- While many stories exist, the most prevalent is the result of a misunderstanding after a fire destroyed much of Campbell's original campus. As the school's founder and president, Dr. James Archibald Campbell bemoaned the fate of the institution, Mr. Z.T. Kivett encouraged him, "Your name's Campbell; then get a hump on you! We've got work to do." Dr. Campbell thought that Mr. Kivett said, "You're a camel, get a hump on you."
- Campbell's athletic teams were originally named the "Hornets." At the time, other references to the athletic teams were "The Campbells" or the "Campbellites."
- The changing of the mascot to a camel came in late 1933 or early 1934
- Campbell is the only NCAA Division I competitor (of 363 members in 2022-23) with a "Camel" as its mascot
- NCAA Division III member Connecticut College athletic teams are also nicknamed the Camels

ABOUT CAMPBELL UNIVERSITY

- Founded as Buies Creek Academy on Jan. 5, 1887 by James Archibald Campbell
- Since then, Buies Creek Academy has evolved to become Campbell Junior College (1926), Campbell College (1961), and Campbell University (1979)
- 1,500 acre main campus located 30 miles south of Raleigh
- Fields 23 NCAA Division I athletics programs

NOTABLE CAMPBELL ALUMNI

- **Gaylord Perry** - Major League Baseball pitcher from 1962 to 1983; Baseball Hall of Fame class of 1991; Five-time all-star; Two-time Cy Young Award winner
- **Jim Perry** - Major League Baseball pitcher from 1959 to 1975; 1970 Cy Young Award winner
- **Chris Clemons** - Fourth highest scorer in college basketball history with 3,225 career points
- **Zach Neto** - Los Angeles Angels shortstop, selected in first round of 2023 MLB draft
- **Cedric Mullins** - Baltimore Orioles outfielder, selected to 2021 MLB all-star team
- **Fred Whitfield** - Charlotte Hornets President
- **Michelle Koh** - Women's golfer, 2016 Olympian (Malaysia)
- **Paul Green** - Pulitzer Prize winner for Drama in 1927

CAMELS

CAMPBELL FIGHTING CAMELS ROSTER

ROSTER BREAKDOWN

BY CLASS

Grad Students (3) - Nürenberg, Staves, Tuelle

Seniors (3) - Cotter, Ezumah, Hammack

Fitzgerald

Junior (2) - Dahlquist, Fuller

Sophomores (2) - Boone, Nuckols, Núñez

Freshmen (3) - Dill, Smith, Woods

BY STATE/COUNTRY

Georgia (1) - Ezumah

North Carolina (2) - Dill, Staves

Pennsylvania (1) - Dahlquist

South Carolina (2) - Smith, Woods

Tennessee (1) - Tuelle

Virginia (3) - Cotter, Hammack Fitzgerald, Nuckols

Washington, D.C. (1) - Boone

Australia (1) - Fuller

Spain (1) - Núñez

Luxembourg (1) - Nürenberg

CAMPBELL BY POSITION

Forward (6) - Dahlquist, Ezumah, Hammack Fitzgerald, Nürenberg, Smith, Staves

Guard (8) - Boone, Cotter, Dill, Fuller, Nuckols, Núñez, Tuelle, Woods

NUMERICAL ROSTER

#	Name	Yr.	Pos.	Ht.	Hometown/High School
0	Jessica Woods	Fr.	G	5-7	Columbia, S.C. / Westwood HS
4	Taylor Cotter	Sr.	G	5-9	Fairfax, Va. / Paul VI HS
10	Sarah Hammack Fitzgerald	Sr.	F	6-3	Richmond, Va. / Atlantic Shores Christian
11	Shy Tuelle	Gr.	G	5-10	Hampton, Tenn. / Hampton HS
12	Hadleigh Dill	Fr.	G	6-0	Candler, N.C. / Enka HS
13	Courtney Dahlquist	Jr.	F	6-3	Washington, Pa. / Trinity HS
14	Brittany Staves	Gr.	F	6-0	Raleigh, N.C. / Leesville Road
15	Audrey Fuller	Jr.	G	5-10	Brisbane, Australia / All Hallows' School
20	Gemma Núñez	So.	G	5-7	Almeria, Spain / I.E.S. Bahia de Almeria
21	Logan Nuckols	So.	G	5-6	Rockville, Va. / Patrick Henry HS
22	Gianni Boone	So.	G	5-11	Washington, D.C. / St. John's College HS
24	Peris Smith	Fr.	F	6-2	Graniteville, S.C. / North Augusta HS
32	Christabel Ezumah	Sr.	F	6-2	Sugar Hill, Ga. / Lanier HS
44	Svenia Nürenberg	Gr.	F	5-10	Bergem, Luxembourg / Sportlycee

ALPHABETICAL ROSTER

#	Name	Yr.	Pos.	Ht.	Hometown/High School
22	Gianni Boone	So.	G	5-11	Washington, D.C. / St. John's College HS
4	Taylor Cotter	Sr.	G	5-9	Fairfax, Va. / Paul VI HS
13	Courtney Dahlquist	Jr.	F	6-3	Washington, Pa. / Trinity HS
12	Hadleigh Dill	Fr.	G	6-0	Candler, N.C. / Enka HS
32	Christabel Ezumah	Sr.	F	6-2	Sugar Hill, Ga. / Lanier HS
15	Audrey Fuller	Jr.	G	5-10	Brisbane, Australia / All Hallows' School
10	Sarah Hammack Fitzgerald	Sr.	F	6-3	Richmond, Va. / Atlantic Shores Christian
21	Logan Nuckols	So.	G	5-6	Rockville, Va. / Patrick Henry HS
20	Gemma Núñez	So.	G	5-7	Almeria, Spain / I.E.S. Bahia de Almeria
44	Svenia Nürenberg	Gr.	F	5-10	Bergem, Luxembourg / Sportlycee
24	Peris Smith	Fr.	F	6-2	Graniteville, S.C. / North Augusta HS
14	Brittany Staves	Gr.	F	6-0	Raleigh, N.C. / Leesville Road
11	Shy Tuelle	Gr.	G	5-10	Hampton, Tenn. / Hampton HS
0	Jessica Woods	Fr.	G	5-7	Columbia, S.C. / Westwood HS

STAFF

Head Coach	Ronny Fisher (Furman '90) - 8th season
Associate Head Coach	Megan Hall (Carson Newman '03/Campbell '07) - 19th season
Assistant Head Coach	Lindsay Bowen (Michigan State '06) - 8th season
Assistant Coach	Lakeisha Gregory (Austin Peay '19 / Indiana State '21) 2nd season
Director of Operations & Player Development	Jalen Latta (NC State '21 & '23) 1st season
Director of Scouting & Video Operations	Trevor Ray (NC State '16 / Montreat '20)
Athletic Trainer	Brent Roark - 1st season
Director of Strength & Conditioning	Alex Keough (California Riverside '05 / Seattle '12) - 7th season

PRONUNCIATION GUIDE

11 - Shy Tuelle // TOO-lee	24 - Peris Smith // like Paris, France
12 - Hadleigh Dill // Had-LEE	32 - Christabel Ezumah // e-ZOO-muh
13 - Courtney Dahlquist // DOLL-quist	44 - Svenia Nürenberg // SWEN-ya NUR-ren-BERG
20 - Gemma Núñez // GEM-mah Noon-yez	
21 - Logan Nuckols // (like knuckles)	
22 - Gianni Boone // Gee-AHH-knee (or goes by Gigi)	

CAMELS

WHEN WAS THE LAST TIME...

STREAKS

Overall	L1
Home - Overall	W1
Home - CAA	W1
Home - Non-Conference	W7
Road - Overall	L1
Road - CAA	L1
Road - Non-Conference	L3
Neutral	W2

A CAMPBELL PLAYER POSTED:

50+ points	Never
40+ points	Antionette Matthews (40) vs. UNC Pembroke, 3/2/85
35-39 points	April Cromartie (35) vs. Georgia State, 2/26/00
30-34 points	Caroline Bowns (30) at Winthrop, 2/14/17
25-29 points	Christabel Ezumah (28) vs. Stony Brook (OT), 1/21/24
20-24 points	Christabel Ezumah (24) vs. Towson, 1/14/24
Two 20+ point scorers	Shy Tuelle (21) & Caroline Bowns (20) vs. Hampton, 3/14/19
20 or more rebounds	Taya Bolden (21) at Winthrop, 3/2/19
15 or more rebounds	Christabel Ezumah (16) vs. Lancaster Bible, 12/14/23
10 or more assists	Luana Serranho (10) at Charleston Southern, 1/8/22
6 or more three pointers	Audrey Fuller (6) at Winthrop, 1/14/23
5 or more steals	Gemma Nunez (5) vs. Morgan State, 11/23/23
5 or more blocks	Christabel Ezumah (5) vs. NC Central, 12/5/23
A double-double	Christabel Ezumah (11 points, 12 rebounds) vs. Elon, 1/12/24

A CAMPBELL TEAM:

Scored 100+ points	108 vs. NC Wesleyan, 11/6/23
Scored 40-49 points	44 vs. Elon, 1/12/24
Scored 30-39 points	39 at ETSU, 12/17/23
Scored fewer than 30 points	27 vs. Norfolk State, 12/18/17
Collected 50 or more rebounds	69 vs. Lancaster Bible, 12/14/23
Blocked 10 or more shots	11 vs. NC Wesleyan, 11/7/22
Had 12 or more steals	13 vs. UNC Asheville, 1/7/23
Forced 20 or more turnovers	20 vs. Morgan State, 11/23/23
Went to overtime	vs. Stony Brook (OT), 1/21/24
Went to double-overtime	At Radford (2OT), 2/25/21
Went to triple-overtime	Never

AN OPPOSING TEAM:

Scored 100+ points	110 at Florida Atlantic, 2/3/96
Scored 40-49 points	43 at Northeastern, 1/28/24
Scored 30-39 points	35 at Elon, 2/4/24
Scored fewer than 30 points	28 vs. Lancaster Bible, 12/14/23
Collected 50 or more rebounds	56 at USC Upstate, 2/1/20
Blocked 10 or more shots	10 vs. Charleston Southern, 2/19/19
Had 12 or more steals	13 vs. Morgan State, 11/23/23
Forced 20 or more Campbell turnovers	22 at Charleston (2/11/24)

CAMELS

PLAYER CAREER HIGHS

0 - Jessica Woods

Points: 13 points vs. NC Wesleyan (11/6/23)
Rebounds: 4 vs. Lancaster Bible (12/14/23)
Assists: 7 vs. NC Wesleyan (11/6/23)
Steals: 1 four times, last vs. Stony Brook (1/21/24)
Blocks: 1 vs. Lancaster Bible (12/14/23)
FG Made: 4 twice, last vs. Lancaster Bible (12/14/23)
3pt Made: 2 vs. Lancaster Bible (12/14/23)
FT Made: 4 vs. NC Wesleyan (11/6/23)

4 - Taylor Cotter

Points: 6 vs. Lancaster Bible (12/14/23)
Rebounds: 2 twice, last vs. Lancaster Bible (12/14/23)
Assists: 1 vs. Lancaster Bible (12/14/23)
Steals:
Blocks: 1 vs. Lancaster Bible (12/14/23)
FG Made: 1 vs. Western Carolina (11/18/23)
3pt Made:
FT Made: 1 vs. NC Wesleyan (11/6/23)

10 - Sarah Hammack Fitzgerald

Points: 20 vs. St. Andrews (11/17/21)
Rebounds: 8 vs. William Peace (12/14/22)
Assists: 3 twice, last at UCF (12/3/23)
Steals: 2 vs. NC Wesleyan (11/6/23)
Blocks: 1 twice, last vs. NC Wesleyan (11/6/23)
FG Made: 8 vs. St. Andrews (11/17/21)
3pt Made: 3 vs. St. Andrews (11/17/21)
FT Made: 4 vs. Western Michigan (11/24/23)

11 - Shy Tuelle

Points: 23 thrice, last vs. N.C. Wesleyan (11/7/22)
Rebounds: 12 vs. Charleston Southern (3/15/19)
Assists: 8 twice, last at Virginia (11/12/23)
Steals: 5 vs. Gardner-Webb (1/30/21)
Blocks: 3 twice, last vs. N.C. Wesleyan (11/7/22)
FG Made: 9 at Radford (2/25/21)
3pt Made: 7 twice, last vs. N.C. Wesleyan (11/7/22)
FT Made: 6 vs. Charleston Southern (3/15/19)

12 - Hadleigh Dill

Points: 13 vs. NC Wesleyan (11/6/23)
Rebounds: 10 vs. Lancaster Bible (12/14/23)
Assists: 5 vs. Lancaster Bible (12/14/23)
Steals: 4 vs. Lancaster Bible (12/14/23)
Blocks: 1 vs. Lancaster Bible (12/14/23)
FG Made: 4 vs. NC Wesleyan (11/6/23)
3pt Made: 3 vs. NC Wesleyan (11/6/23)
FT Made: 2 vs. NC Wesleyan (11/6/23)

13 - Courtney Dahlquist

Points: 14 vs. Pfeiffer (11/9/21)
Rebounds: 7 thrice, last vs. Jacksonville State (12/21/22)
Assists: 2 five times
Steals: 4 vs. William Peace (12/14/22)
Blocks: 2 thrice, last vs. William Peace (12/14/22)
FG Made: 7 vs. Pfeiffer (11/9/21)
3pt Made: 2 seven times
FT Made: 3 thrice, last at USC Upstate (2/1/23)

14 - Brittany Staves

Points: 25 at Coppin State (11/9/23)
Rebounds: 14 at Radford (2/25/21)
Assists: 6 twice, last at Winthrop (1/14/23)
Steals: 4 twice, last vs. UNC Asheville (1/7/23)
Blocks: 2 four times
FG Made: 9 at Coppin State (11/9/23)
3pt Made: 5 twice, last at Coppin State (11/9/23)
FT Made: 5 at Gardner-Webb (1/4/23)

15 - Audrey Fuller

Points: 20 at Winthrop (1/14/23)
Rebounds: 9 twice, last vs. Longwood (3/2/23)
Assists: 6 thrice, last vs. NC Wesleyan (11/6/23)
Steals: 3 six times, last at Charleston (2/11/24)
Blocks: 3 twice, last at USC Upstate (2/1/23)
FG Made: 6 four times, last at Elon (2/4/24)
3pt Made: 6 at Winthrop (1/14/23)
FT Made: 5 vs. Pfeiffer (11/9/21)

20 - Gemma Nunez

Points: 12 vs. Towson (1/14/24)
Rebounds: 10 twice, last at Northeastern (1/28/24)
Assists: 7 at UNCW (1/19/24)
Steals: 5 vs. Morgan State (11/23/23)
Blocks: 2 vs. William Peace (12/14/22)
FG Made: 5 twice, last vs. Towson (1/14/24)
3pt Made: 2 twice, last vs. Towson (1/14/24)
FT Made: 3 twice, vs. Morgan State (11/23/23)

21 - Logan Nuckols

Points: 9 vs. Lancaster Bible (12/14/23)
Rebounds: 5 vs. William Peace (12/14/22)
Assists: 6 vs. William Peace (12/14/22)
Steals: 1 twice, last vs. William Peace (12/14/22)
Blocks:
FG Made: 3 vs. Lancaster Bible (12/14/23)
3pt Made: 3 vs. Lancaster Bible (12/14/23)
FT Made: 2 vs. N.C. Wesleyan (11/7/22)

22 - Gianni Boone

Points: 20 vs. Cleveland State (12/20/22)
Rebounds: 9 twice, last at Radford (1/18/23)
Assists: 6 vs. William Peace (12/14/22)
Steals: 4 twice, last at UNC Asheville (1/28/23)
Blocks: 3 at High Point (2/8/23)
FG Made: 8 vs. Cleveland State (12/20/22)
3pt Made: 2 twice, last vs. UNCW (2/9/24)
FT Made: 8 vs. Charleston Southern (1/21/23)

24 - Peris Smith

Points: 6 vs. Lancaster Bible (12/14/23)
Rebounds: 5 vs. NC Wesleyan (11/6/23)
Assists:
Steals: 1 vs. NC Wesleyan (11/6/23)
Blocks: 1 vs. Western Carolina (11/18/23)
FG Made: 3 vs. Lancaster Bible (12/14/23)
3pt Made:
FT Made: 2 at Virginia (11/12/23)

32 - Christabel Ezumah

Points: 28 vs. Stony Brook (1/21/24)
Rebounds: 16 twice, last vs. Lancaster Bible (12/14/23)
Assists: 4 thrice, last vs. Stony Brook (1/21/24)
Steals: 3 vs. Presbyterian (12/29/22)
Blocks: 6 vs. Winthrop (12/31/20)
FG Made: 11 vs. Lancaster Bible (12/14/23)
3pt Made:
FT Made: 10 vs. Longwood (2/4/23)

44 - Svenia Nurenberg

Points: 17 vs. NC Central (12/5/23)
Rebounds: 11 twice, last at Elon (2/4/24)
Assists: 7 vs. South Carolina State (11/19/22)
Steals: 4 twice, last vs. Gardner-Webb (3/5/22)
Blocks: 3 vs. Radford (1/22/22)
FG Made: 6 twice, last vs. Western Michigan (11/24/23)
3pt Made: 3 twice, last vs. NC Central (12/5/23)
FT Made: 5 twice, last vs. Hampton (1/24/22)

CAMELS

SEASON STATS (2023-24)



2023-24 Campbell Women's Basketball Combined Team Statistics All games

Page 1/1
as of Feb 11, 2024

Game Records

Record	Overall	Home	Away	Neutral
ALL GAMES	12-10	7-2	3-8	2-0
CONFERENCE	5-6	3-2	2-4	0-0
NON-CONFERENCE	7-4	4-0	1-4	2-0

Score by Periods

Team	1st	2nd	3rd	4th	OT	TOT
Campbell	325	330	340	342	10	1347
Opponents	254	297	304	336	8	1199

Team Box Score

No.	Player	GP-GS	MIN	AVG	Total		3-Point		F-Throw		Rebounds			PF	DQ	A	TO	BLK	STL	PTS	AVG	
					FG-FGA	FG%	3FG-3FGA	3FG%	FT-FTA	FT%	OFF	DEF	TOT									AVG
32	EZUMAH, Christabel	22-22	525:03	23.9	110-191	.576	0-1	.000	57-111	.514	52	121	173	7.9	51	0	29	64	36	11	277	12.6
11	TUELLE, Shy	22-22	657:56	29.9	72-191	.377	52-141	.369	4-6	.667	2	69	71	3.2	39	0	35	36	4	17	200	9.1
14	STAVES, Brittany	22-18	599:46	27.3	63-148	.426	25-73	.342	24-35	.686	22	49	71	3.2	34	0	37	43	5	12	175	8.0
22	BOONE, Gianni	22-0	365:34	16.6	59-124	.476	4-17	.235	24-35	.686	29	34	63	2.9	19	0	19	27	12	14	146	6.6
20	NUNEZ, Gemma	22-22	693:11	31.5	46-135	.341	12-56	.214	25-32	.781	9	95	104	4.7	29	0	75	57	3	31	129	5.9
44	NUREMBERG, Svenia	22-22	664:46	30.2	46-106	.434	16-40	.400	19-26	.731	32	73	105	4.8	47	1	45	46	4	25	127	5.8
15	FULLER, Audrey	22-4	407:11	18.5	39-117	.333	21-68	.309	10-13	.769	18	51	69	3.1	21	0	22	28	6	21	109	5.0
10	FITZGERALD, Sarah	22-0	205:06	9.3	33-83	.398	6-25	.240	10-12	.833	14	22	36	1.6	28	0	9	24	1	5	82	3.7
0	WOODS, Jessica	14-0	107:27	7.7	13-34	.382	5-16	.313	6-6	1.000	3	12	15	1.1	5	0	16	18	1	4	37	2.6
12	DILL, Hadleigh	17-0	94:45	5.6	10-24	.417	8-17	.471	4-4	1.000	5	13	18	1.1	6	0	9	4	1	4	32	1.9
21	NUCKOLS, Logan	8-0	35:45	4.5	5-11	.455	4-8	.500	0-0	.000	1	4	5	0.6	1	0	2	3	0	0	14	1.8
4	COTTER, Taylor	7-0	20:34	2.9	4-6	.667	0-0	.000	1-2	.500	3	4	7	1.0	0	0	1	1	1	0	9	1.3
24	SMITH, Peris	9-0	43:30	4.8	4-9	.444	0-0	.000	2-6	.333	4	8	12	1.3	13	0	0	4	1	2	10	1.1
13	DAHLQUIST, Courtney	2-0	04:25	2.2	0-2	.000	0-1	.000	0-0	.000	0	0	0	0.0	0	0	0	1	0	0	0	0.0
Team											29	51	80				24					
Total		22	4425		504-1181	.427	153-463	.330	186-288	.646	223	606	829	37.7	293	1	299	380	75	146	1347	61.2
Opponents		22	4425		452-1243	.364	96-379	.253	199-284	.701	206	491	697	31.7	333	6	214	301	55	163	1199	54.5

Team Statistics

	CAMPB	OPP
Scoring	1347	1199
Points per game	61.2	54.5
Scoring margin	+6.7	-
Field goals-att	504-1181	452-1243
Field goal pct	.427	.364
3 point fg-att	153-463	96-379
3-point FG pct	.330	.253
3-pt FG made per game	7.0	4.4
Free throws-att	186-288	199-284
Free throw pct	.646	.701
F-Throws made per game	8.5	9.0
Rebounds	829	697
Rebounds per game	37.7	31.7
Rebounding margin	+6.0	-
Assists	299	214
Assists per game	13.6	9.7
Turnovers	380	301
Turnovers per game	17.3	13.7
Turnover margin	-3.6	-
Assist/turnover ratio	0.8	0.7
Steals	146	163
Steals per game	6.6	7.4
Blocks	75	55
Blocks per game	3.4	2.5
Winning streak	0	-
Home win streak	1	-
Attendance	11340	10563
Home games-Avg/Game	9-1260	11-960
Neutral site-Avg/Game	-	2-100

Team Results

Date	Opponent	Score	Att.
11/06/2023	N.C. Wesleyan	W 108-37	1091
11/09/2023	at Coppin St.	W 68-55	462
11/12/2023	at Virginia	L 49-74	3965
11/18/2023	Western Caro.	W 70-52	1294
11/23/2023	vs Morgan St.	W 60-46	100
11/24/2023	vs Western Mich.	W 70-61	100
12/03/2023	at UCF	L 41-42	1072
12/05/2023	N.C. Central	W 74-61	909
12/14/2023	Lancaster Bible	W 99-28	2809
12/17/2023	at ETSU	L 39-54	683
12/21/2023	at High Point	L 47-48	1128
01/05/2024	at Stony Brook	L 43-73	732
01/07/2024	at Monmouth	L 47-49	550
01/12/2024	Elon	L 44-45	1023
01/14/2024	Towson	W 69-59	1114
01/19/2024	at UNCW	L 58-69	626
01/21/2024	Stony Brook	Wot 75-73	963
01/26/2024	N.C. A&T	L 51-73	1008
01/28/2024	at Northeastern	W 54-43	201
02/04/2024	at Elon	W 53-35	719
02/09/2024	UNCW	W 77-57	1129
02/11/2024	at Col. of Charleston	L 51-65	425

CAMELS

CAA STATS (2023-24)



2023-24 Campbell Women's Basketball Combined Team Statistics In Conference games

Page 1/1
as of Feb 11, 2024

Game Records

Record	Overall	Home	Away	Neutral
ALL GAMES	5-6	3-2	2-4	0-0
CONFERENCE	5-6	3-2	2-4	0-0
NON-CONFERENCE	0-0	0-0	0-0	0-0

Score by Periods

Team	1st	2nd	3rd	4th	OT	TOT
Campbell	156	133	171	152	10	622
Opponents	138	162	164	169	8	641

Team Box Score

No.	Player	Total			3-Point		F-Throw		Rebounds				PF DQ A TO			BLK	STL	PTS	AVG			
		GP-GS	MIN	AVG	FG-FGA	FG%	3FG-3FGA	3FG%	FT-FTA	FT%	OFF	DEF	TOT	AVG	P					DQ	A	TO
32	EZUMAH, Christabel	11-11	280:27	25.5	55-101	.545	0-1	.000	37-62	.597	20	54	74	6.7	26	0	14	29	14	3	147	13.4
14	STAVES, Brittany	11-9	318:03	28.9	35-78	.449	12-37	.324	14-20	.700	13	26	39	3.5	15	0	22	25	4	10	96	8.7
11	TUELLE, Shy	11-11	324:04	29.5	34-97	.351	23-70	.329	2-2	1.000	1	32	33	3.0	19	0	11	18	0	7	93	8.5
22	BOONE, Gianni	11-0	206:13	18.7	32-70	.457	4-8	.500	13-18	.722	15	19	34	3.1	9	0	7	18	8	10	81	7.4
20	NUNEZ, Gemma	11-11	371:51	33.8	21-75	.280	6-33	.182	11-13	.846	6	49	55	5.0	13	0	41	20	2	12	59	5.4
15	FULLER, Audrey	11-2	221:44	20.2	19-56	.339	9-34	.265	7-7	1.000	5	27	32	2.9	8	0	5	12	3	12	54	4.9
44	NURENBERG, Svenia	11-11	349:01	31.7	17-45	.378	7-20	.350	7-12	.583	15	35	50	4.5	26	1	26	26	2	13	48	4.4
10	FITZGERALD, Sarah	11-0	64:49	5.9	11-24	.458	0-3	.000	4-4	1.000	4	3	7	0.6	8	0	2	8	0	2	26	2.4
0	WOODS, Jessica	7-0	40:08	5.7	5-11	.455	2-5	.400	0-0	.000	0	6	6	0.9	2	0	3	12	0	2	12	1.7
12	DILL, Hadleigh	10-0	27:23	2.7	2-7	.286	2-6	.333	0-0	.000	1	1	2	0.2	2	0	2	0	0	0	6	0.6
4	COTTER, Taylor	2-0	02:39	1.3	0-0	.000	0-0	.000	0-0	.000	0	0	0	0.0	0	0	0	0	0	0	0	0.0
24	SMITH, Peris	3-0	07:07	2.4	0-2	.000	0-0	.000	0-0	.000	1	0	1	0.3	2	0	0	1	0	0	0	0.0
21	NUCKOLS, Logan	3-0	07:07	2.4	0-0	.000	0-0	.000	0-0	.000	1	0	1	0.3	0	0	0	1	0	0	0	0.0
13	DAHLQUIST, Courtney	2-0	04:25	2.2	0-2	.000	0-1	.000	0-0	.000	0	0	0	0.0	0	0	0	1	0	0	0	0.0
Team											15	31	46					10				
Total		11	2225		231-568	.407	65-218	.298	95-138	.688	97	283	380	34.5	130	1	133	181	33	71	622	56.5
Opponents		11	2225		244-618	.395	60-202	.297	93-132	.705	98	260	358	32.5	157	3	115	141	29	78	641	58.3

Team Statistics

	CAMPB	OPP
Scoring	622	641
Points per game	56.5	58.3
Scoring margin	-1.7	-
Field goals-att	231-568	244-618
Field goal pct	.407	.395
3 point fg-att	65-218	60-202
3-point FG pct	.298	.297
3-pt FG made per game	5.9	5.5
Free throws-att	95-138	93-132
Free throw pct	.688	.705
F-Throws made per game	8.6	8.5
Rebounds	380	358
Rebounds per game	34.5	32.5
Rebounding margin	+2.0	-
Assists	133	115
Assists per game	12.1	10.5
Turnovers	181	141
Turnovers per game	16.5	12.8
Turnover margin	-3.6	-
Assist/turnover ratio	0.7	0.8
Steals	71	78
Steals per game	6.5	7.1
Blocks	33	29
Blocks per game	3.0	2.6
Winning streak	0	-
Home win streak	1	-
Attendance	5237	3253
Home games-Avg/Game	5-1047	6-542
Neutral site-Avg/Game	-	0-0

Team Results

Date	Opponent		Score	Att.
01/05/2024	at Stony Brook	L	43-73	732
01/07/2024	at Monmouth	L	47-49	550
01/12/2024	Elon	L	44-45	1023
01/14/2024	Towson	W	69-59	1114
01/19/2024	at UNCW	L	58-69	626
01/21/2024	Stony Brook	Wot	75-73	963
01/26/2024	N.C. A&T	L	51-73	1008
01/28/2024	at Northeastern	W	54-43	201
02/04/2024	at Elon	W	53-35	719
02/09/2024	UNCW	W	77-57	1129
02/11/2024	at Col. of Charleston	L	51-65	425

CAMPBELL RADIO & TV SPOT CHART

NOTES: Campbell ranks 11th nationally in scoring defense (54.5 ppg allowed), 7th in three-point percentage defense (25.3%), 22nd in field goal percentage defense (36.4%), 15th with 13.3 fouls per game, 55th in defensive rebounds per game (27.5) and 42nd in rebound margin (6.0)

RECORD	2023-24	LAST YR	STATS	CAM	OPP	MON	OPP	CAMPBELL'S LAST THREE GAMES		
OVERALL	12-10	16-15	FG%	.427	.364	.408	.370	Feb. 4	at Elon	W, 53-35
CAA	5-6	10-8 (BSC)	3PT%	.330	.253	.305	.260	- Fuller 16 pts; Boone 10 pts, 3 steals; Ezumah 9 pts, 7 rebs, 3 blks		
HOME	7-2	9-5	FT%	.701	.685	.652	.652	Feb. 9	vs. UNCW	W, 77-57
AWAY	3-8	6-7	POINTS	61.2	54.5	63.4	57.8	- Boone 14 pts, 6 rebs; Hammack Fitzgerald 12 pts; Staves 12pts		
NEUTRAL	2-0	1-3	REBOUNDS	37.7	31.7	41.7	32.6	Feb. 11	at Charleston	L, 51-65
			ASSISTS	13.6	9.7	12.2	10.9	- Tuelle 11pts, 5 rebs; Staves 8 pts, 4 rebs; Woods 8 pts		



#0 JESSICA WOODS

FR. / G / 5-7 / COLUMBIA, S.C. (WESTWOOD HS)

PPG	2.6	FG%	.382
RPG	1.1	3P%	.313
APG	1.1	FT%	1.000

- Recorded 8 pts (3-of-3 FGs, 2-of-2 from three) in 9 minutes of action off the bench in loss at Charleston (2/11)
- Recorded 2 rebounds, 1 assist in 6 mins of action against NC A&T (1/26)
- Played 8 mins, scoring 2 pts and recording 1 steal in win over Stony Brook (1/21)
- Recorded 10 points, 4 rebounds, 4 assists against Lancaster Bible (12/14)

POINTS	13 vs. NC Wesleyan (11/6/23)
REBOUNDS	4 vs. Lancaster Bible (12/14/23)
ASSISTS	7 vs. NC Wesleyan (11/6/23)
LAST GAME	- 8 PTS, 1 REB, 1 AST IN 9 MINS



#4 TAYLOR COTTER

SR. / G / 5-10 / FAIRFAX, VA. / ST. PAUL VI CATHOLIC

PPG	1.3	FG%	.667
RPG	1.0	3P%	.000
APG	0.1	FT%	.500

- Scored 6 points in win over Lancaster Bible; Made first career field goal in win over Western Carolina
- Senior walk-on guard; Was previously member of Campbell track and field program
- Previously played JUCO ball at Holy Family University in Philadelphia, averaged 5.6 points, 4.2 rebounds in 19.0 mins per game

POINTS	6 vs. Lancaster Bible (12/14/23)
REBOUNDS	2 twice, last vs. Lancaster Bible (12/14/23)
ASSISTS	1 vs. Lancaster Bible (12/14/23)
LAST GAME	- DNP



#10 SARAH HAMMACK FITZGERALD

SR. / F / 6-3 / CHESAPEAKE, VA. (ATLANTIC SHORES CHRISTIAN)

PPG	3.7	FG%	.398
RPG	1.6	3P%	.240
APG	0.4	FT%	.833

- Made 5-of-7 shots from the field and scored 12 pts in win over UNCW (2/9)...
- Recorded 2 pts, 2 rebs in 6 mins in win at Elon (2/4)
- Played 7 minutes recording 2 pts in win at Northeastern (1/28)
- Had 2 points and 2 assists in 7 minutes in win over Towson (1/14)

POINTS	20 vs. St. Andrews (11/17/21)
REBOUNDS	8 vs. William Peace (12/14/22)
ASSISTS	3 twice, last at UCF (12/3/23)
LAST GAME	- PLAYED 2 MINUTES



#11 SHY TUELLE

GR. / G / 5-10 / HAMPTON, TENN. (HAMPTON HS)

PPG	9.1	FG%	.377
RPG	3.2	3P%	.369
APG	1.6	FT%	.667

- Led Campbell with 11 pts in loss at Charleston (2/11)
- Became 10th Camel to reach 1,300 pts in win over UNCW (2/9), 10th on all-time scoring list (1,313 points)
- Ranks 4th in CAA with 52 threes, 5th in league shooting 36.9% from range
- All-time program leader in 3-pointers (273 total)

POINTS	23 three, last vs. NC Wesleyan (11/7/22)
REBOUNDS	12 vs. Charleston Southern (3/15/19)
ASSISTS	8 twice, last at Virginia (11/12/23)
LAST GAME	- 11 PTS, 5 REBS



#12 HADLEIGH DILL

FR. / G / 6-0 / CANDLER, N.C. (ENKA HS)

PPG	1.9	FG%	.417
RPG	1.1	3P%	.471
APG	0.5	FT%	1.000

- Played 5 minutes, hit 1-of-1 threes in loss at Charleston (2/11)
- Recorded 3 pts, 1 assist in 4 minutes in loss to NC A&T (1/26)
- Had 8 points, 10 rebounds, 5 assists, 4 steals in win over Lancaster Bible (1/14)
- Scored 13 points, made 3-of-5 threes in collegiate debut against NC Wesleyan (11/6)

POINTS	13 vs. NC Wesleyan (11/6/23)
REBOUNDS	10 twice, last at Northeastern (1/28/24)
ASSISTS	5 vs. Lancaster Bible (12/14/23)
LAST GAME	- 3 PTS IN 5 MINS



#13 COURTNEY DAHLQUIST

JR. / F / 6-3 / WASHINGTON, PA. (TRINITY HS)

PPG	0.0	FG%	.000
RPG	0.0	3P%	.000
APG	0.0	FT%	.000

- Made first appearance of the season in loss to NC A&T (1/26)
- Appeared in 30 of 31 games last season
- Scored in double-figures twice and made at least one three-pointer in 18 outings last season
- Named College Sports Communicators Academic All-District in 2022-23

POINTS	14 vs. Pfeiffer (11/9/21)
REBOUNDS	7 thrice, last vs. Jax State (12/21/22)
ASSISTS	2 five times
LAST GAME	- DNP



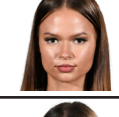
#14 BRITTANY STAVES

GR. / F / 6-0 / RALEIGH, N.C. (LEESVILLE ROAD HS)

PPG	8.0	FG%	.426
RPG	3.2	3P%	.342
APG	1.7	FT%	.686

- Had 8 pts, 4 rebs in loss at Charleston (2/11)
- Recorded 12 pts, 2 rebs, 5 assists, 3 steals and 1 block in win over UNCW (2/9)
- Totaled 5 pts, 5 rebs against Northeastern (1/28)... Has scored in double-figures in 5 of past 8 games
- Big South Scholar-Athlete of the Year, Honorable Mention Big South selection last season

POINTS	25 at Coppin State (11/9/23)
REBOUNDS	14 at Radford (2/25/21)
ASSISTS	6 twice, last at Winthrop (1/14/23)
LAST GAME	- 8 PTS, 4 REBS



#15 AUDREY FULLER

JR. / G / 5-10 / BRISBANE, AUSTRALIA (ALL HALLOWS' SCHOOL)

PPG	5.0	FG%	.333
RPG	3.1	3P%	.309
APG	1.0	FT%	.769

- Finished with 7 pts, 4 rebs, 3 steals in loss at Charleston (2/11)
- Recorded 7 pts, 2 rebs, 1 assist, 1 steal and 1 block in win over UNCW (2/9)
- Scored season-high 16 pts including 11 in first half in win at Elon (2/4)
- Started in 30 games last season, averaged second-most minutes on team at 30.5, scored in double-figures seven times

POINTS	20 at Winthrop (1/14/23)
REBOUNDS	9 twice, last vs. Longwood (3/2/23)
ASSISTS	6 thrice, last vs. NC Wesleyan (11/6/23)
LAST GAME	- 7 PTS, 4 REBS, 3 STEALS



#20 GEMMA NUÑEZ

SO. / G / 5-7 / ALMERIA, SPAIN (I.E.S. BAHIA DE ALMERIA)

PPG	5.9	FG%	.341
RPG	4.7	3P%	.214
APG	3.4	FT%	.781

- 2 pts, 3 rebs, 6 assists in loss at Charleston (2/11)
- Had 7 pts, 5 rebs, 4 assists and 1 steal in win over UNCW (2/9)
- Ranks 9th in CAA in assists per game (3.4), 6th in assist/turnover ratio (1.32)
- Competed w/ Spain's 3x3 U21 team over the summer, helping team to 3-0 record with wins over Israel, Switzerland and Germany

POINTS	12 vs. Towson (1/14/24)
REBOUNDS	10 vs. Northeastern (1/28/24)
ASSISTS	7 at UNCW (1/19/24)
LAST GAME	- 2 PTS, 3 REBS, 6 ASSISTS



#21 LOGAN NUCKOLS

SO. / G / 5-6 / ROCKVILLE, VA. (PATRICK HENRY HS)

PPG	1.8	FG%	.455
RPG	0.6	3P%	.500
APG	0.3	FT%	.000

- Recorded career-high 9 points, made three 3-pointers in win over Lancaster Bible
- Appeared in 19 games, averaging 6.9 minutes and 1.8 points last season

POINTS	9 vs. Lancaster Bible (12/14/23)
REBOUNDS	5 vs. William Peace (12/14/22)
ASSISTS	6 vs. William Peace (12/14/22)
LAST GAME	- DNP



#22 GIANNI BOONE

SO. / G / 5-11 / WASHINGTON, D.C. (ST. JOHN'S COLLEGE HS)

PPG	6.6	FG%	.476
RPG	2.9	3P%	.235
APG	0.9	FT%	.686

- 4 pts, 1 rebound in loss at Charleston (2/11)
- Recorded season-high 14 pts, added 6 rebs and 2 blocks in win over UNCW (2/9)
- Scored 10 points, added 4 rebounds, 3 steals in win at Elon (2/4)
- Appeared in all 31 games last year, made 20 starts as true freshman; named to Big South All-Freshman team

POINTS	20 vs. Cleveland State (12/20/22)
REBOUNDS	9 twice, last at Radford (1/18/23)
ASSISTS	6 vs. William Peace (12/14/22)
LAST GAME	- 4 PTS, 1 REBOUND



#24 PERIS SMITH

FR. / F / 6-2 / GRANITEVILLE, S.C. (NORTH AUGUSTA HS)

PPG	1.1	FG%	.444
RPG	1.3	3P%	.000
APG	0.0	FT%	.333

- Recorded 6 points, 4 rebounds in win over Lancaster Bible
- Scored two points, had five boards and one steal in collegiate debut against NC Wesleyan (11/6)
- Faced off against Campbell teammate Jessica Woods in the South Carolina 4A State Championship in her senior season

POINTS	6 vs. Lancaster Bible (12/14/23)
REBOUNDS	5 vs. NC Wesleyan (11/6/23)
ASSISTS	N/A
LAST GAME	- DNP



#32 CHRISTABEL EZUMAH

SR. / F / 6-2 / SUGAR HILL, GA. (LANIER HS)

PPG	12.6	FG%	.576
RPG	7.9	3P%	.000
APG	1.3	FT%	.514

- Recorded 6 pts, 5 rebounds, 1 steal in loss at Charleston (2/11)
- 10 pts, 3 rebs in 15 minutes in win over UNCW (2/9); 9 pts, 7 rebs, 3 blocks in win at Elon (2/4)
- Ranks 3rd in CAA w/ 1.64 bpg... 115 career blocks ranks 2nd in program history... Has 4+ blocks in 4 games this year
- Ranks 25th nationally, 2nd w/ 57/6 FG%... ranks 3rd in CAA with 7.9 rebs per game, 4th in free throw attempts (111)

POINTS	28 vs. Stony Brook (1/21/24)
REBOUNDS	16 twice, last vs. Lancaster Bible (12/14/23)
ASSISTS	4 thrice, last vs. Stony Brook (1/21/24)
LAST GAME	- 10 PTS, 3 REBS



#44 SVENIA NÜRENBERG

GR. / F / 5-11 / BERGEM, LUXEMBOURG (SPORTLYCEE)

PPG	5.8	FG%	.434
RPG	4.8	3P%	.400
APG	2.0	FT%	.731

- 7 pts, 7 rebs, 5 assists, 1 block in win over UNCW (2/9)... Has recorded 5 assists in 3 of past 4 games
- 4 pts, 5 assists and tied career-high with 11 rebs in win at Elon (2/4)
- Returning for her fifth season with the program, missed entire 2020-21 season due to injury

POINTS	17 vs. NC Central (12/5/23)
REBOUNDS	11 twice, last at Elon (2/4/24)
ASSISTS	7 vs. South Carolina State (11/19/22)
LAST GAME	- 7 PTS, 7 REBS, 5 ASTS, 1 BLK