

Home Orchard

Fruit Pest Management Tips

Recognizing Apple Maggot *Rhagoletis pomonella*

The apple maggot is an invasive pest not native to the PNW. Many WA counties are quarantined for apple maggot. For homeowners, proper pest identification and proactive control measures help protect fruit from this pest.



Photo by
M. Klaus,
WSDA



Apple maggot flies are monitored with commercial yellow sticky traps baited with lures. Traps go out by mid-June and fly activity continues into October. These flies are about 1/5" long and have a distinct banding wing pattern.



The apple maggot itself tunnels beneath the skin of the fruit; the damage may be difficult to see until the tunneling becomes highlighted by fruit rot. Later, the mature maggot eats its way out of the fruit.



Photo by
M. Klaus,
WSDA



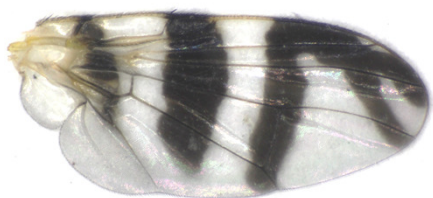
Pierce County Master
Gardener Clinic



The translucent white maggot is legless without a head capsule, but with visible mouth hooks at the head end. A mature maggot is about 1/4- 5/16" long. The maggot pupates in soil.

Fruit Fly Wing Patterns

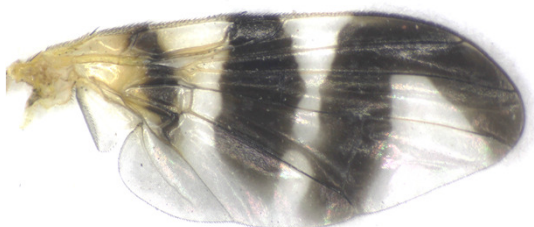
of flies commonly found in PNW tree fruits



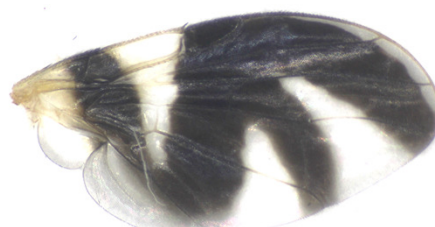
Western Cherry Fruit Fly
Rhagoletis indifferens
Wing size = 3.5 mm (0.14 inch)



Apple Maggot Fly
Rhagoletis pomonella
Wing size = 4.1 mm (0.16 inch)



Walnut Husk Fly
Rhagoletis completa
Wing size = 4.3 mm (0.17 inch)



Snowberry Maggot Fly
Rhagoletis zephyria
Wing size = 3.5 mm (0.14 inch)

Management:

Regularly updated WSU recommendations (chemical and non-chemical) on pest management of apple maggot for homeowners can be found on line at these websites:

- WSU Extension Hortsense at <http://hortsense.cahnrs.wsu.edu/Home/HortsenseHome.aspx>
- Pacific Northwest Insect Management Handbook <https://pnwhandbooks.org/insect/tree-fruit/apple/apple-apple-maggot>

Contributors-

Mike Tobin, No. Yakima Conservation District
Dr. Wee Yee, USDA-ARS, Wapato
Jeff Upton, Yakima Co Hort Pest & Disease Board
Mike Klaus, WSDA- Yakima
Dr. Mike Bush, WSU Extension- Yakima County



Product names have been used to simplify information; no endorsement is intended. Always read the pesticide label before purchasing and applying pesticide products. WSU Extension programs and employment are available to all without discrimination. Evidence of noncompliance may be reported through you local Extension office. Copies of this document may be available at the WSU Yakima County Extension Office, call 509-574-1600. Created September 2017