

**COUNTERFEIT  
DETECTOR**

Brand: Safescan  
 Model: 165-S  
 Color: Black  
 Article: 112-0531  
 EAN: 8717496335074



# 165-S

## COUNTERFEIT DETECTOR

### TOP-OF-THE-LINE COUNTERFEIT DETECTION

The Safescan 165-S uses the latest counterfeit detection technology to scrutinize seven advanced security features built into today's currencies: infrared ink, magnetic ink, metallic thread, color, size, thickness and watermark. This technology is so reliable it will detect double notes, half notes, and even the superdollar, the most sophisticated counterfeit banknote ever created. In just half a second, you'll know with 100% certainty whether the banknote in your hand is genuine or counterfeit—and your customer will know, too, eliminating unnecessary discussion.

- 100% counterfeit detection ([www.ecb.eu](http://www.ecb.eu), [www.bankofengland.co.uk](http://www.bankofengland.co.uk))
- 7-point automatic counterfeit detection: Infrared, Magnetic ink, Metallic thread, Watermark, Size, Thickness and Color
- Suitable for detection of current and new banknotes series
- Also suitable for the new USD 100 banknote
- Counterfeit banknote alarm with visual and audio alert
- Money counter showing quantity and value
- Insert SGD, HKD, CNY, USD, JPY, MYR in 1 direction
- Checks 8 currencies: SGD, HKD, CNY, USD, JPY, MYR, GBP and EUR
- Large and clear LCD display
- Compact size
- Free currency updates
- Currency update: USB and microSD
- Verification speed: < ½ second



Verifies up to 9 currencies



Shows value and total amount of the scanned banknotes



Suspected banknote alarm with visual and audio alert

## TECHNICAL SPECIFICATIONS

- 7-point counterfeit detection	IR (Infrared), MG (magnetic ink), MT (metallic thread), WM (watermark), size, thickness and color
- Default currencies	SGD, MYR, HKD, CNY, USD, JPY, GBP and EUR
- Detection method	Automatic verification
- Display features	Large & clear LCD display. Automatic standby after 30 seconds
- Currency updates	Via USB port and microSD
- Rechargeable battery	Available seperately - art.no. 112-0410
- Power	220-240V~50/60Hz - 12V, 1A
- Dimensions product (lxwxh)	15.9 x 12.8 x 8.3 cm
- Weight product	620 gr
- Dimensions retailbox (lxwxh)	28.0 x 17.5 x 13.0 cm
- Certifications / compliances	CE, WEEE, RoHS, REACH

## PACKAGE CONTENTS

- Safescan 165-S
- Manual (multilingual)
- Power adapter

## TESTED

- 100% counterfeit detection  
([www.ecb.eu](http://www.ecb.eu), [www.bankofengland.co.uk](http://www.bankofengland.co.uk))



## WARRANTY

- 1 year



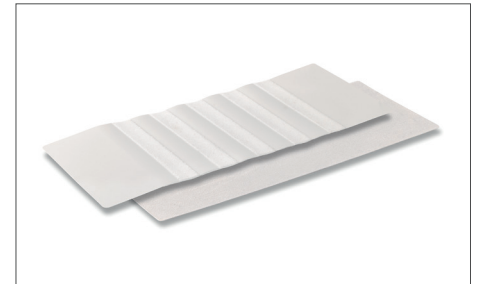
## ACCESSORIES



Safescan LB-105 Rechargeable battery  
Art. no: 112-0410



Safescan USB update cable  
Art. no: 112-0459



Safescan Cleaning cards  
Art. no: 136-0545