

Main links: [Title page](#) [Introduction & guides](#) [INDEXES](#) [chapters](#) & [genera](#) [Open PDF printout of this file](#)

Salticidae (Araneae) genera of the world - an atlas
(unfinished manuscript)
by Jerzy Prószyński
Professor Emeritus, Museum and Institute of Zoology, Polish Academy of Sciences,
ul. Wilcza 63, 00-679 Warsaw, POLAND
e-mail: jerzy.proszynski@wp.pl

Chapter 28 SPARTAEINES

informal group of genera
Version July 18th, 2020



symbol of the genera not classified into supragroups

Composition and searching on this page: [Brettus](#) [Cocalus](#) [Cyrba](#) [Gelotia](#) [Holcolaetis](#) [Meata](#) [Meleon](#) [Mintonia](#) [Neobrettus](#) [Phaeacius](#) [Portia](#) [Spartaeus](#) [Thrandina](#) [Veissella](#) [Wanlessia](#) [Yaginumanis](#)

Exemplary representatives of the group

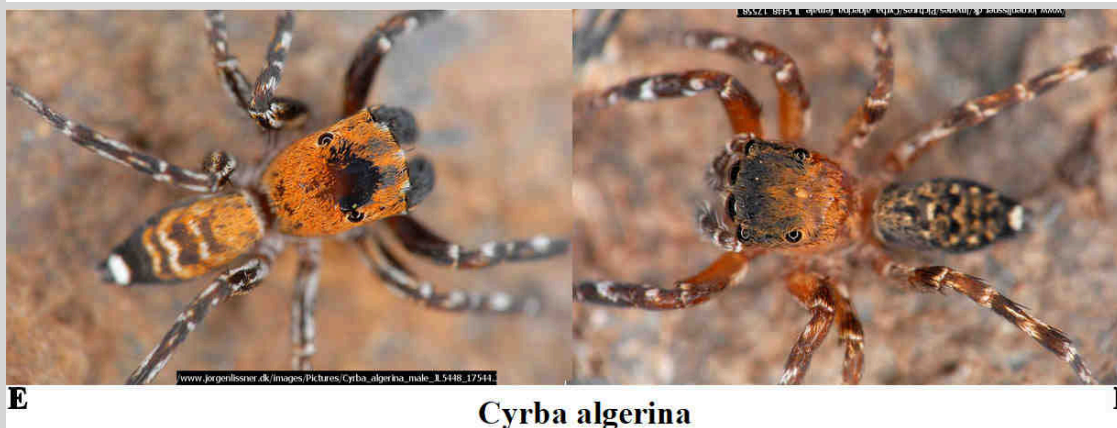
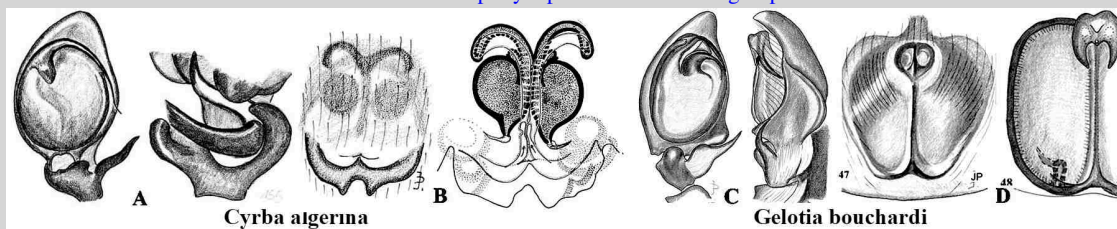


Figure - . C8-C9 - *Cyrba algerina*, C10-C11 - same, female & male ©Photo J. Lissner (from Spain).
SOURCE: Prószyński 2003a. *Annales zoologici*. 53 (1): 46-47, figs 153-157, ©Photo J. Lissner. All copyrights are retained by the original authors and copyright holders, used by their courtesy.

SPARTAEINES - informal group of genera

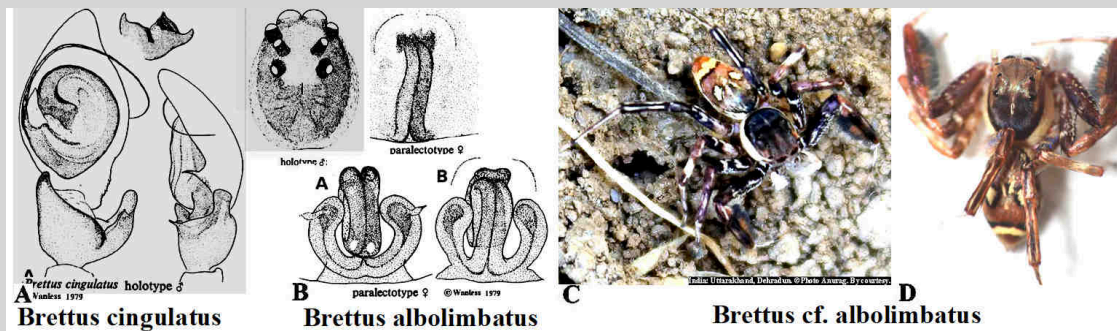
Diagnosis. Remarkably common and stable character is robust embolus, arising antero-laterally and encircling tightly anterior part of bulbus, also spermathecae in form of large globular or oval chamber, occupying large part of epigyne.

Remark. Considered primitive "Basal Salticidae" by Maddison et al. (several papers) on the ground of molecular research, but there are no continuity of morphological diagnostic characters of these genera with other Salticidae, nor does that contribute to taxonomic identification of genera concerned. However, remarkable behavior of spinning web by some *Portia* seems to be primitive.

Gen. *Brettus* Thorell, 1895

Type species *Brettus cingulatus* (7 recognizable species).

See more species at [Brettus-Q+M](#).

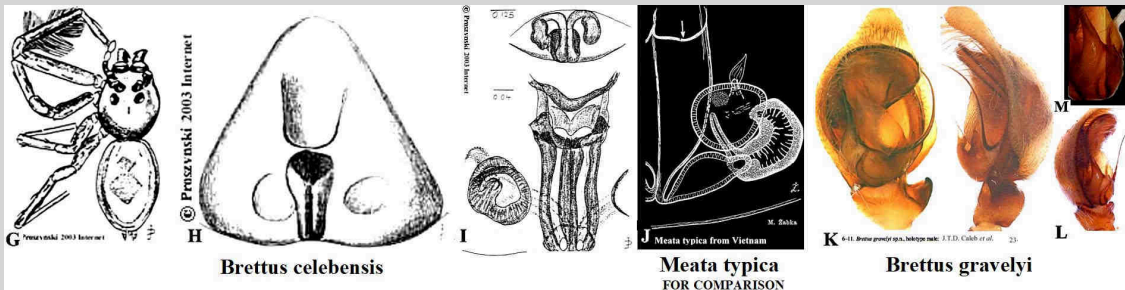




Brettus albolimbatus on a Guava tree, underside of a leaf, India: S. Kodagu District, Karnataka. ©Photo Vipin Baliga, by courtesy.

© Photo by V. Baliga – from India Nature Watch. By courtesy.

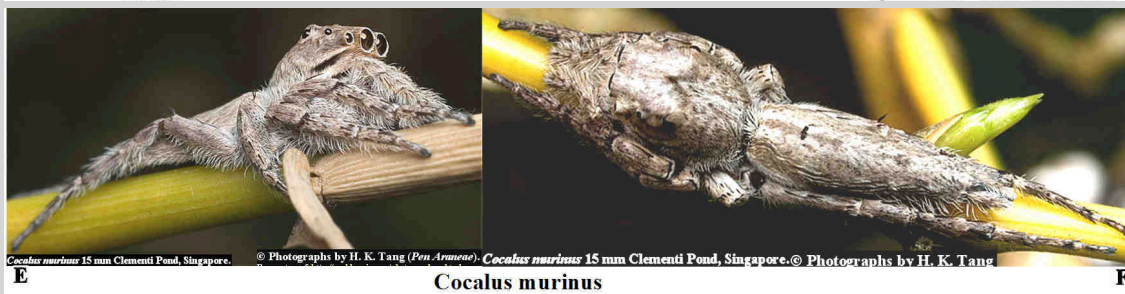
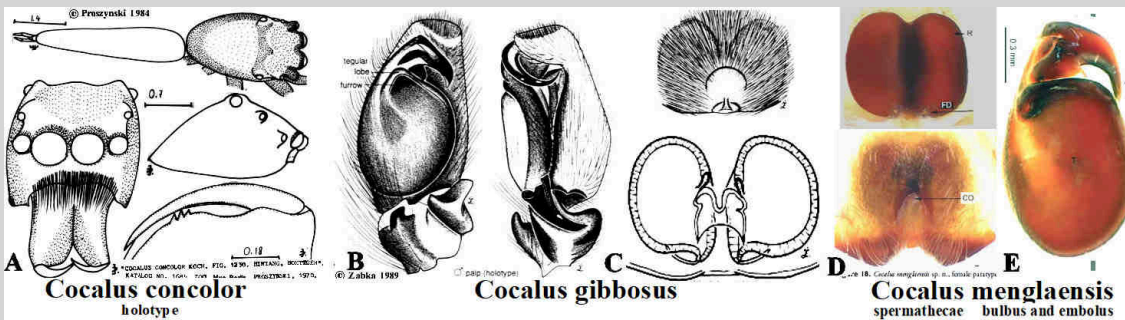
E **Brettus cf. albolimbatus – females** **F**



A - *Brettus cingulatus*, B - *Brettus albolimbatus*, C-F - *Brettus cf. albolimbatus*, G-I - *Brettus celebensis* : Proszynski, Internet (from N Sulawesi: Dumoga Bone Nat. Park. Det. Ch. Deeleman-Reinhold), J - *Meata typica* [for comparison of spermatheca and duct, but body very different], K-M - *Brettus graveyi*.
 SOURCE. A - Wanless 1979b. Bull. brit. Mus. nat. Hist. (Zool.): 185-188, f. 1A, C, E, G; 2A-C; 3C-D; 4A-B, C - ©Photo Anurag, D - ©Photo Vipin Baliga, G-I - Proszynski, Internet, J - Zabka 1985. Ann. zool. 39, 11: 239, ff. 279-282, K - Caleb, in Caleb, Acharya & Kumar, 2018: 232, f. 1-15. All ©copyrights are retained by the original authors and copyright holders, used by their courtesy.

Gen. Cocalus Koch C.L., 1846

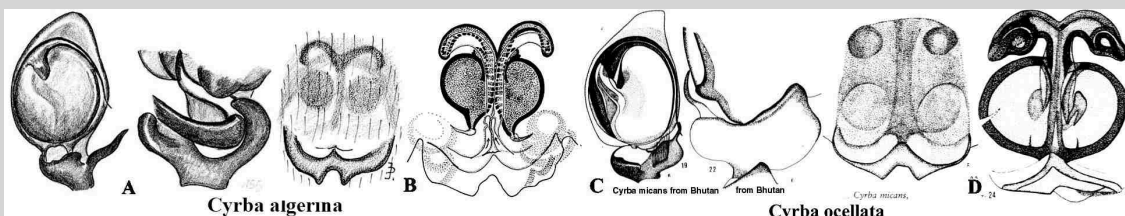
Type species *Cocalus concolor* (4 recognizable species).
 See more species at [Cocalus-Q+M](#).



A - *Cocalus concolor* (holotype), B-C - *Cocalus gibbosus*, D - *Cocalus menglaensis* - epigyne and spermathecae, E - isolated bulbus and embolus, F-G - *Cocalus murinus*.
 SOURCE. A - Proszynski 1984c: 158, B-C - Davies Todd, Zabka 1989. Mem. Queens. Mus., 27 (2): 196, t 4, D-E - Cao, Li & Zabka, 2016. ZooKeys 630: 68-71, f. 17-18, 43, F-G - ©Photo H. K. Tang. All ©copyrights are retained by the original authors and copyright holders, used by their courtesy.

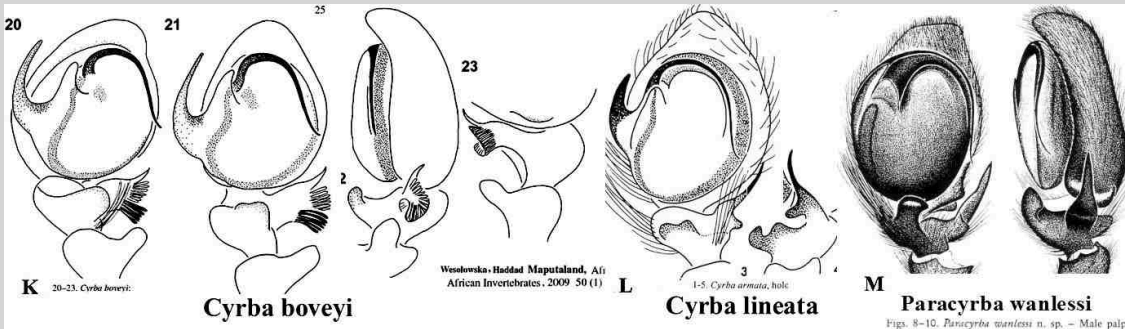
Gen. Cyrba Simon, 1876

Type species *Cyrba algerina* (8 recognizable species).
 See more species at [Cyrba-Q+M](#).





A *Cyrba algerina* **B** *Cyrba algerina* **C** *Cyrba ocellata* **D** *Cyrba ocellata* **E** *Paracyrba wanlessi* **F** *Paracyrba wanlessi* **G** *Cyrba lineata* **H** *Cyrba lineata* **I** *Cyrba boveyi* **J** *Cyrba boveyi*



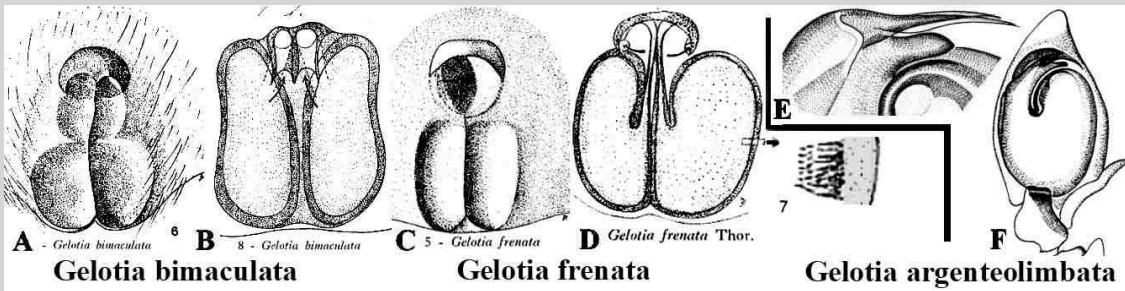
K 20-23. *Cyrba boveyi*; **L** 1-5. *Cyrba lineata*; **M** 1-5. *Paracyrba wanlessi* n. sp. - Male palpal
 Wołoszka-Haddad Maputaland, Afri African Invertebrates, 2009, 50 (1)
 Fig. 8-10. *Paracyrba wanlessi* n. sp. - Male palpal

A-B, E - *Cyrba algerina*, C-D - *Cyrba ocellata*, F-G - *Cyrba ocellata* (Tamil Nadu, live and discolored by preservation), H, M - *Paracyrba wanlessi* [= *Cyrba wanlessi* ?], J, K - *Cyrba boveyi*, I, L - *Cyrba lineata*,
 SOURCE. A-B - Prószyński 2003a. Annales zoologici, 53 (1): 46-47, figs 153-157, C-D - Prószyński 1978a: 16, ff. 19, 21-24, E - ©Photo J. Lissner, F-G - ©Photo J. Caleb, H - ©Photo Daiqin Li, I-J - ©Photo C. Haddad, J, K - Wołoszka, Haddad 2009. African Invertebrates, 50(1): 23-26, photo 238, K - Wołoszka, Haddad 2009. Afr. Invert. 50(1): 26-27, f 24-25, L - Wołoszka 2006c. Genus 17(4): 617-620, f 1-5, M - Zabka and Kowacs. (1996). *Senckenbergiana Biologica* 76: 153-161, f. 1-13. All copyrights are retained by the original authors and copyright holders, used by their courtesy.

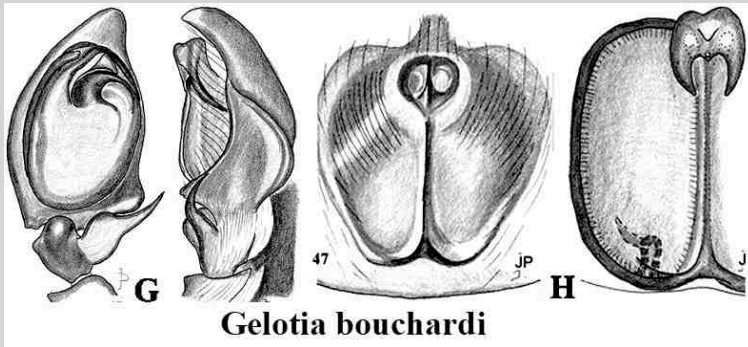
COMMENT. *Paracyrba wanlessi* resembles *Cyrba* by palps and internal structure of epigyne, also type of abdominal pattern (comparable with *Cyrba ocellata* = see f. F and H), seems to differ by longer and thinner legs, also lower carapace - f. H).

Gen. Gelotia Thorell, 1890

Type species *Gelotia frenata* (8 recognizable species).
 See more species at [Gelotia-O+M.z.](#)



A - *Gelotia bimaculata* **B** - *Gelotia bimaculata* **C** - *Gelotia frenata* **D** *Gelotia frenata* Thor. **E** *Gelotia argenteolimbata* **F** *Gelotia argenteolimbata*



G *Gelotia bouchardi* **H** *Gelotia bouchardi*

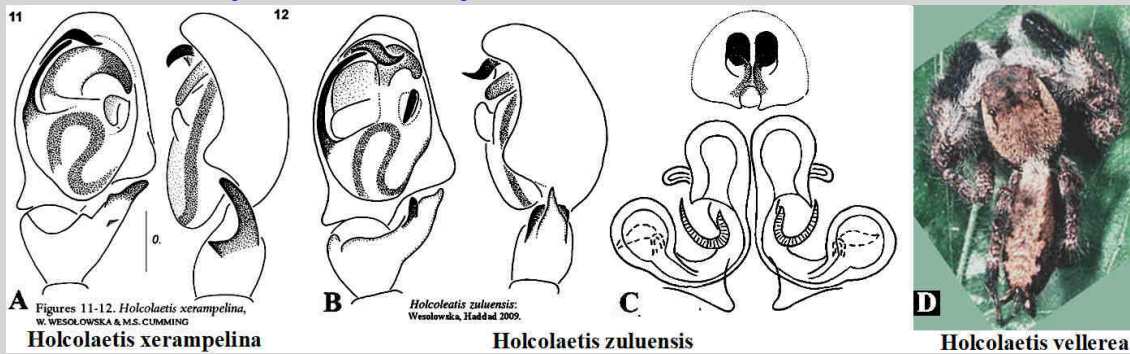
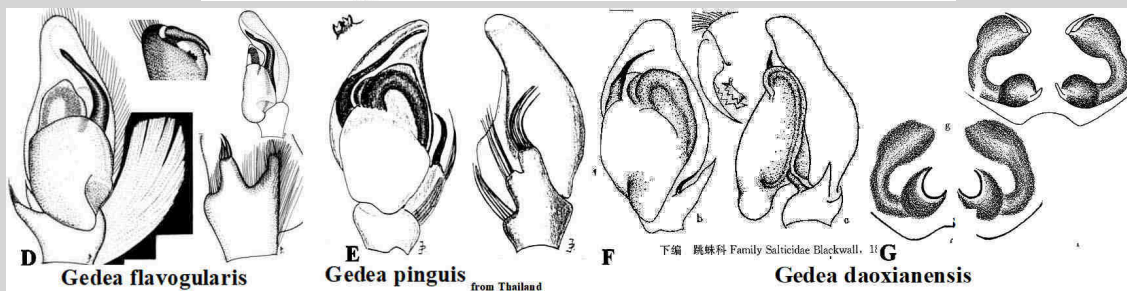
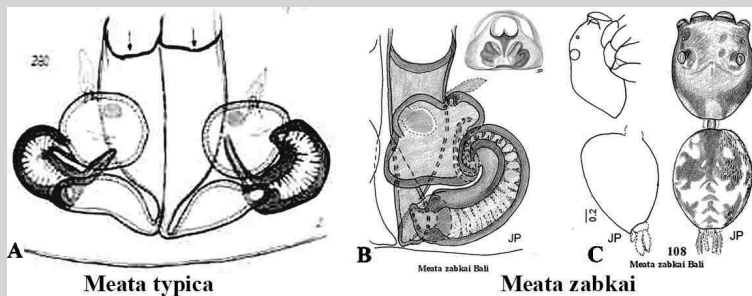


I *Gelotia* sp. - male **J** *Gelotia* sp. - female **K** *Gelotia* sp.

A-B - *Gelotia bimaculata*, C-D - *Gelotia frenata*, E-F - *Gelotia argenteolimbata*, G-H - *Gelotia bouchardi*, I-J - *Gelotia* sp., K - *Gelotia* [?] sp.
 SOURCE. A-D - Prószyński 1968a. 77: 11-20, ff. 5, 7, ff. 8, E-F - Prószyński, Deeleman-Reinhold, 2012. Arthr. select. 21(1): 38, 47-58, I-J - *Gelotia* sp. ©Photo R.R. Jackson, J - Maddison 2015. Journal of Arachnology. 43: 231-292, f. 8. All copyrights are retained by the original authors and copyright holders, used by their courtesy.

Gen. Holcolaetis Simon, 1886

Type species *Holcolaetis xerampelina* (7 recognizable species).

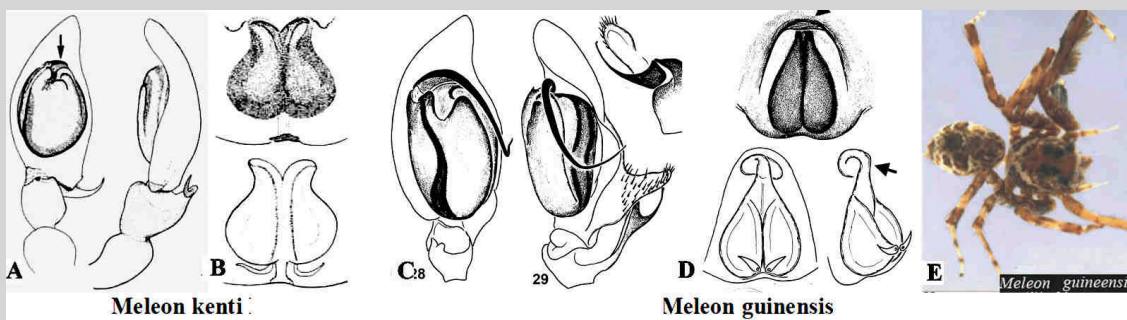
See more species at [Holcolaetis-Q+M](#).Remark: Maddison 2015 places *Holcolaetis* in a separate subtribe *Holcolaetina*A - *Holcolaetis xerampelina*, B-C - *Holcolaetis zuluensis*, D - *Holcolaetis vellerea*.SOURCE. A - Wesolowska & Cumming, 2011: *J. Afrotrop. Zool.* 7:79, f 11-12, B-C - Wesolowska, Haddad 2009. *African Invertebrates*, 50(1): 47-49, f 83-86, D - ©Photo John and Frances Murphy. All copyrights are retained by the original authors and copyright holders, used by their courtesy.**Gen. *Meata* Żabka, 1985**Type species *Meata typica* (2 recognizable species).See more species at [Meata-Q+M](#).

Meata Żabka, 1985, known only from the female, is here synonymized with *Gedeia* Simon, 1902 (NEW SYNONYMY), based on co-collecting and molecular data matching it with male *Gedeia* (Maddison, unpublished data). *Curubis* is likely

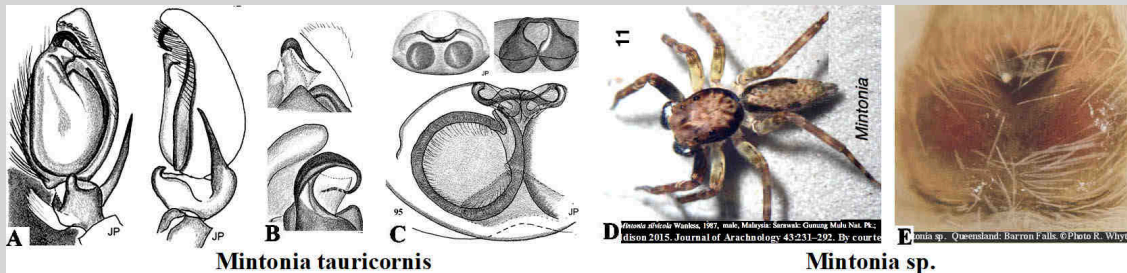
H MADDISON—SALTICID CLASSIFICATION 247

A - *Meata typica*, B-C - *Meata zabkai*, D - *Gedeia flavogularis*, E - *Gedeia pinguis*, F-G - *Gedeia daoxianensis*, H - facsimile.SOURCE. A - Żabka 1985. *Ann. zool.* 39, 11: 239, ff. 279-282, B-C - Prószyński, Deeleman-Reinhold, 2010. *Arthr. selecta*, 19(3): 174, f 107-110, F-G - Yin et al., 2012: *Fauna Hunan: Araneae in Hunan*: 1370, f. 741a-g, H - Maddison, 2015: *Journal of Arachnology* 43(3): 24. All copyrights are retained by the original authors and copyright holders, used by their courtesy.

COMMENT. Type species of *Meata* is known from females only, type species of *Gedeia* only from males (data from World Spider Catalog 2020 ver. 21.0), Maddison, 2015: *Journal of Arachnology* 43(3): 247 speaks on unpublished molecular data and co-collecting, which are not verifiable documentation. There are no positive data supporting his claims. The only published drawings of epigyne in the whole *Gedeia* genus, by Yin et al., 2012: *Fauna Hunan: Araneae in Hunan*: 1370, f. 741a-g, repeated by Peng, 2020: *Fauna Sinica, Invertebrata* 53: 147, f. 94a-f (f. F-G, above) are insufficient.

Gen. *Meleon* Wanless, 1984Type species *Meleon kenti* (1 recognizable species).See more species at [Meleon-Q+M](#).A-B - *Meleon kenti*, C-E - *Meleon guineensis*.SOURCE. A-B - Wanless F.R. 1978f. *Bull. brit. Mus. nat. Hist. (Zool.)*, London, 34 (3): 90-91, ff. 2 a-d, C-E - Azarkina, Logunov 2010. *Afr. Invert.* 50(1): 171-173, f 38-39. All copyrights are retained by the original authors and copyright holders, used by their courtesy.**Gen. *Mintonia* Wanless, 1984**

Type species *Mintonia tauricornis* (9 recognizable species).
See more species at [Mintonia-Q+M](#).



Mintonia tauricornis

Mintonia sp.



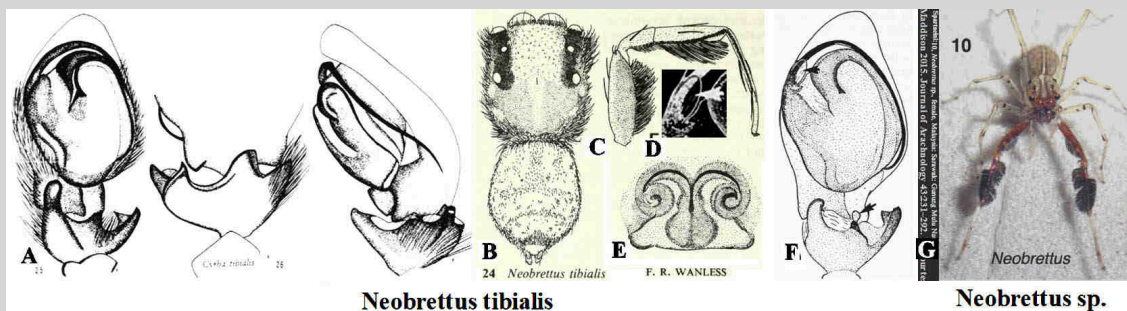
Mintonia sp.

A-C - *Mintonia tauricornis*, D - *Mintonia silvicola*, E-G - *Mintonia sp* Queensland.

SOURCE: A-C - Prószyński, Deeelman-Reinhold, 2012. Arthr. select. 21(1): 43-45, f 87-95, D - Maddison 2015. Journal of Arachnology. 43: 23-292, f. 11, E - ©Photo R. Whyte, F-G - and I.R. Macaulay. All ©copyrights are retained by the original authors and copyright holders, used by their courtesy.

Gen. *Neobrettus* Wanless, 1984

Type species *Neobrettus tibialis* (6 recognizable species).
See more species at [Neobrettus-Q+M](#).



Neobrettus tibialis

Neobrettus sp.



© Murphy

H



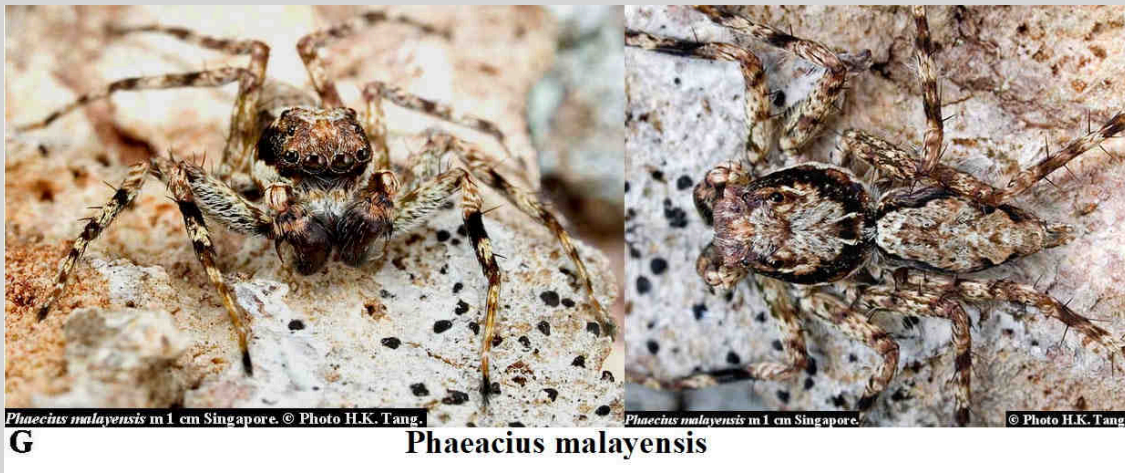
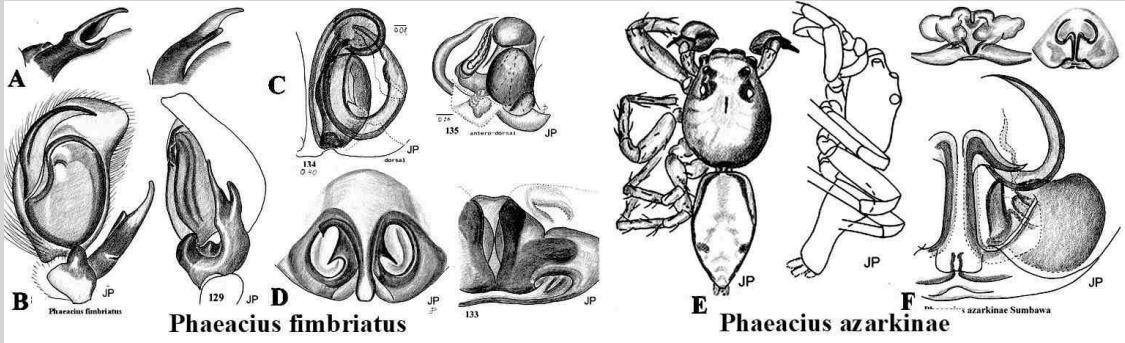
Neobrettus sp. Philippines: Mt. Banaham

A-D - *Neobrettus tibialis*, G-H - *Neobrettus sp.*, I - *Neobrettus sp.* I - *Neobrettus sp.* Philippines: Mt. Banaham.

SOURCE: A-D - Prószyński 1978a. Ent. bas. 19-21, f 25-27, B-F - Wanless 1984a. Bull. brit. Mus. nat. Hist. (Zool.), 46 (2): 183-185, f 24A-H, G - Maddison 2015.

Gen. *Phaeacius* Simon, 1900

Type species *Phaeacius fimbriatus* (12 recognizable species).
See more species at [Phaeacius-Q+M](#).



Phaeacius malayensis in 1 cm Singapore. © Photo H.K. Tang. *Phaeacius malayensis* in 1 cm Singapore. © Photo H.K. Tang.

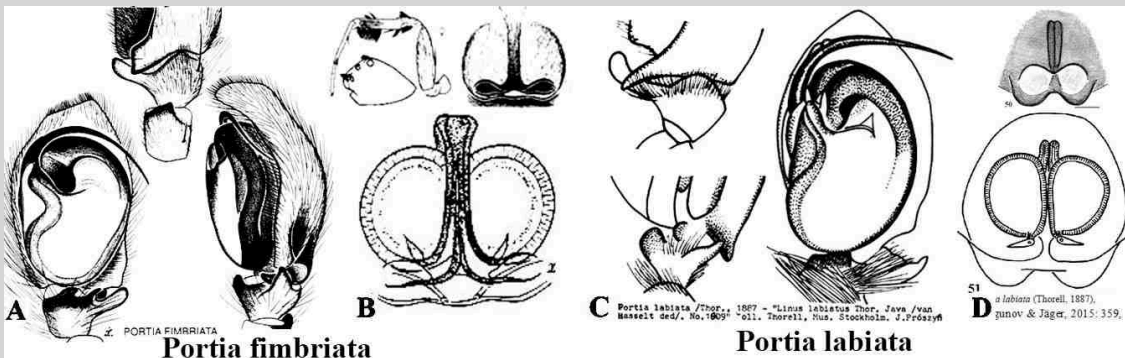


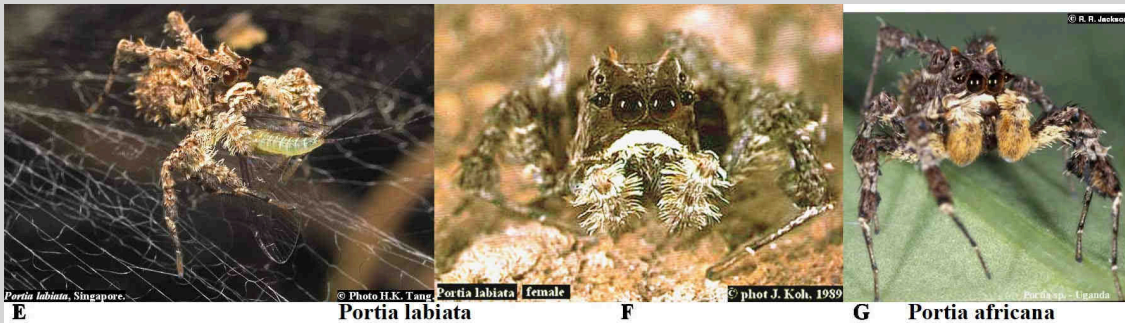
Phaeacius malayensis. Singapore. ©Photo Hirzi Hussain - Zeen's photostr. <http://flickr.com/photos/zeen/>. Creat. Comm. Attr. 3.0 Unported Lic. Hirzi Hussain

A-D -*Phaeacius fimbriatus*, E-F - *Phaeacius azarkinae*, G-H - *Phaeacius malayensis*.
SOURCE: A-F -Prószyński, Deeleman-Reinhold, 2012. Arthr. select.21(1): 55, f 130-140 + .19(3): 178, 127-128. G -© Photo H.K. Tang, H - ©Photo Hirzi Hussain. All copyrights are retained by the original authors and copyright holders, used by their courtesy.

Gen. *Portia* Karsch, 1878

Type species *Portia fimbriata* (14 recognizable species).
See more species at [Portia-Q+M](#).





Portia labiata, Singapore.

© Photo H.K. Tang

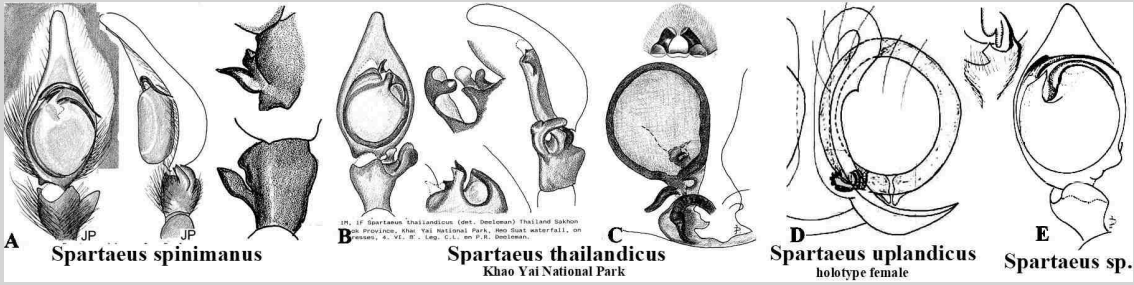
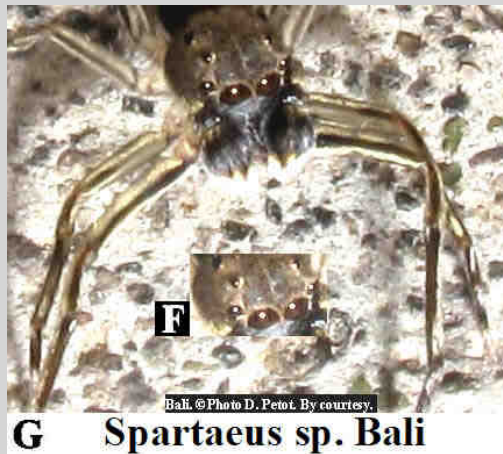
Portia labiata female

© phot J. Koh, 1989

Portia africana - Uganda

E**Portia labiata****F****G Portia africana**A-B - *Portia fimbriata*, C-F - *Portia labiata* (E - on web, Singapore), G - *Portia africana* Uganda.

SOURCE. A-B - Davies Todd V., Zabka M. 1989. Mem. Queens. 27 (2): 195, t 3, C - Proszynski 1984c: 26, 111, D - Logunov & Jäger, 2015. Russian Entomological Journal 24(4): 359, f. 47-51. All Copyrights are retained by the original authors and copyright holders, used by their courtesy.

Gen. *Spartaeus* Thorell, 1891Type species *Spartaeus spinimanus* (11 recognizable species).See more species at [Spartaeus-Q+M](#).**A** *Spartaeus spinimanus*129. *Spartaeus thailandicus* (ent. Deslomen) Thailand Sakon**B** *Spartaeus thailandicus*
Khao Yai National Park**C****D** *Spartaeus uplandicus*
holotype female**E** *Spartaeus* sp.**F**

Bali. © Photo D. Petot. By courtesy.

G *Spartaeus* sp. Bali

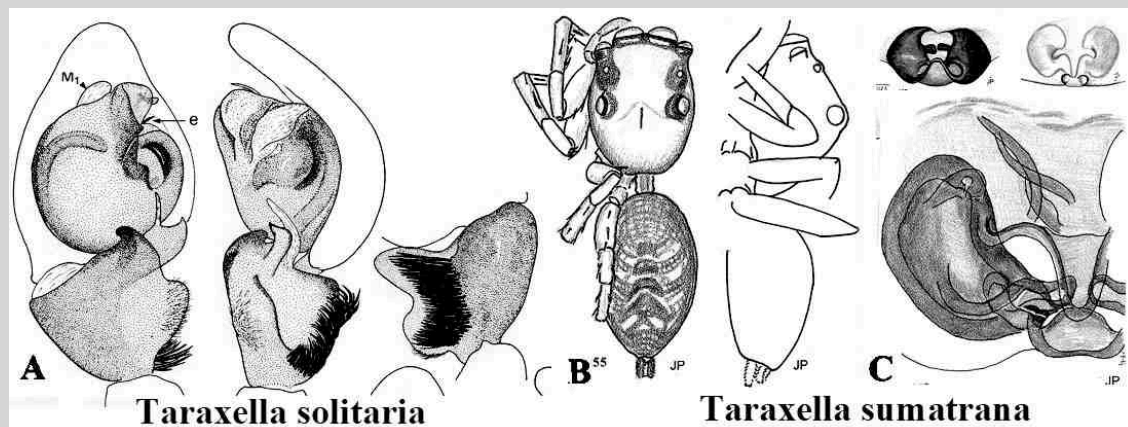
A - *Spartaeus spinimanus*, B-C - *Spartaeus thailandicus* : Prószyński Internet drawings: Khao Yai National Park, coll. Deeleman-Reinhold, D - *Spartaeus uplandicus*: sketches of holotype female, E - *Spartaeus* sp. Prószyński Internet sketches, F-G- *Spartaeus* sp. Bali (note large eyes II).

SOURCE. A - Prószyński, Deeleman-Reinhold, 2010. Arthr. selecta.19(3): 180, f 134-137, B-C -Prószyński Internet drawings: Khao Yai National Park, coll. Deeleman-Reinhold, D - Prószyński Internet sketches, E - Prószyński Internet sketches, F-G - © Photo Petot. All ©copyrights are retained by the original authors and copyright holders, used by their courtesy.

Gen. *Taraxella* Wanless, 1984

Type species *Taraxella solitaria* (5 recognizable species).

See more species at [Taraxella-Q+M](#).



A - *Taraxella solitaria*, B-C - *Taraxella sumatrana*.

SOURCE. A - Wanless, 1987 Bull. British Mus. (NH) (Zool. ser.) 52(3): 156-157, f 7A-G, B-C - Prószyński Deeleman-Reinhold, 2012. Arthr. select. 21(1): 57-58, f 154-158. All ©copyrights are retained by the original authors and copyright holders, used by their courtesy.

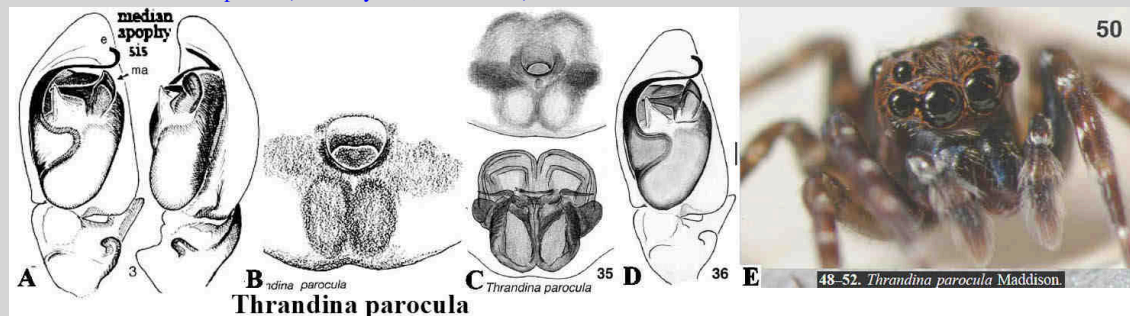
ALTERNATIVE PLACEMENT - see [Thrandina](#)

Gen. *Thrandina* Maddison, 2006

Type species *Thrandina parocula* (3 recognizable species).

See more species at [Thrandina-Q+M](#).

REMARKS. Genus originally placed in Lapsiinae by Maddison 2006. Here is alternative display in SPARTAEINES for calling attention to some similarities in spermathecae and general shape of male palps (in spite of presence of prominent tegular apophysis). Grouping of eyes and size of PME resembles *Brettus* and some other genera. No representative of SPARTAEINES [?] was ever found in Western Hemisphere. (J. Prószyński, 2014-X-31).



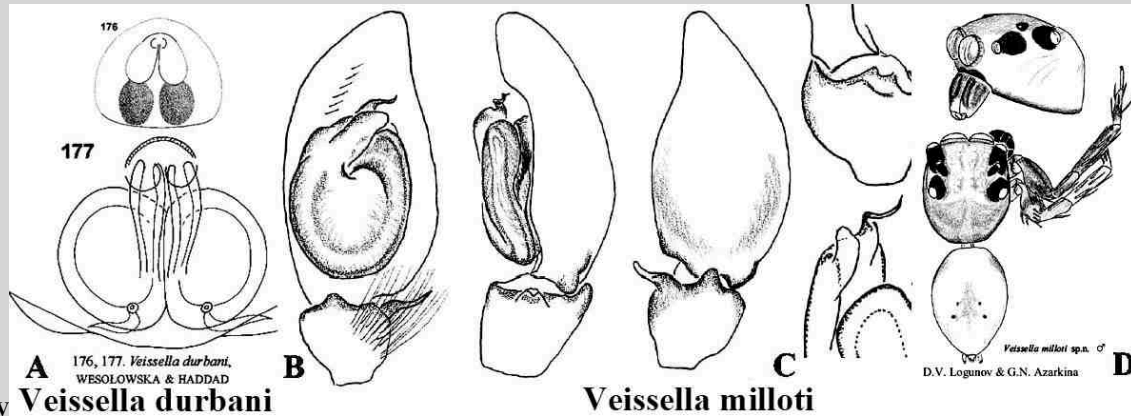
A-E - *Thrandina parocula*, F - *Thrandina cosanga*.

SOURCE. Maddison W.P. 2006. Zootaxa, 1255: 20, f 2-8; 2012: 3424: 65, f 24-42, 48-52. © Magnolia Press. All ©copyrights are retained by the original authors and copyright holders, used by their courtesy.

Gen. *Veissella* Wanless, 1984

Type species *Veissella durbani*. (2 recognizable species).

See more species at [z Veissella-Q+M](#)



v *Veissella durbani*

Veissella milloti

A - *Veissella durbani*, B-D - *Veissella milloti*.

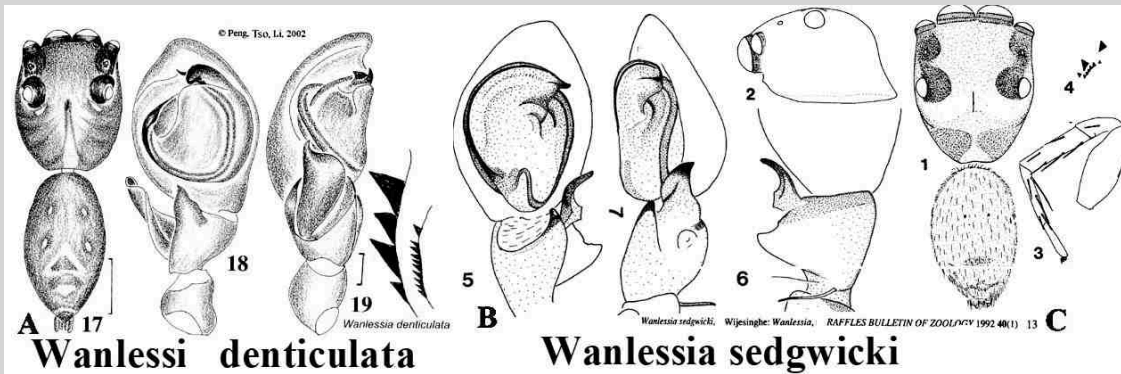
SOURCE. A - Wesolowska & Haddad, 2009: 95, f. 205-209, B-D - Logunov & Azarkina, 2007: 16(2): 113, f 107-113. All copyrights are retained by the original authors and copyright holders, used by their courtesy.

Gen. *Wanlessia* Wijesinghe, 1992

Type species *Wanlessia denticulata* (1 recognizable species).

See more species at [Wanlessia-Q+M](#).

width="941"



Wanlessia denticulata

Wanlessia sedgwicki

A - *Wanlessia denticulata*, B-C - *Wanlessia sedgwicki*.

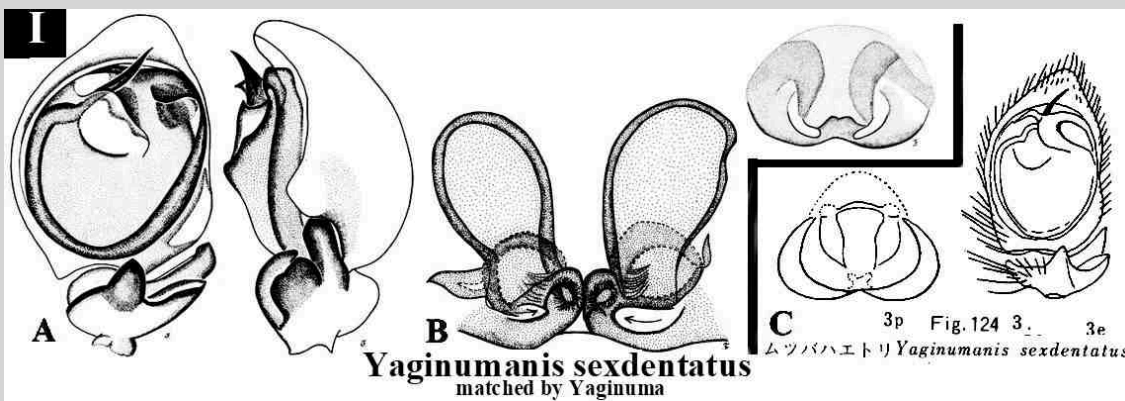
SOURCE. A - Peng X., Tso I., Li S. 2002. Zoological Studies 41 (1): 5, f 17-20, B-C - Wijesinghe, 1992. Raffles Bulletin of Zoology 40(1): 11, f 1-11. All copyrights are retained by the original authors and copyright holders, used by their courtesy.

TWO INTERPRETATIONS OF FEMALES

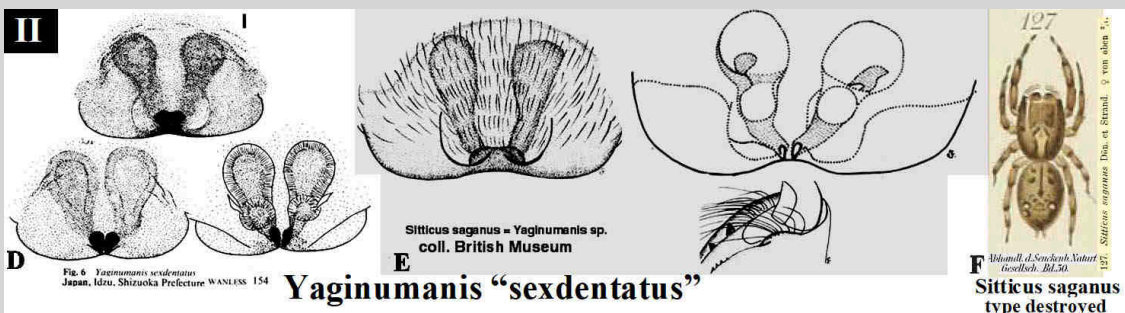
Gen. *Yaginumanis* Wanless, 1984

Type species *Yaginumanis sexdentatus* (3 recognizable species).

See more species at [Yaginumanis-Q+M](#)



Yaginumanis sexdentatus
matched by Yaginuma



Yaginumanis "sexdentatus"

Sitticus saganus
type destroyed

TWO INTERPRETATIONS OF FEMALE. **I** - A-B - *Yaginumanis sexdentatus* - pair matched by Yaginuma, C - same species. **II**

- D-E - female interpreted as *Yaginumanis "sexdentatus"* by Wanless 1984, E - same species as shown on f. E - labelled "*Sitticus*" *saganus* Doenitz & Strand in Boesenberg & Strand, 1906 [not type! misidentified] in the collection of the British Museum - N. H. Museum in London, F - *Sitticus saganus* the only original picture of the type specimen, which was destroyed in Stuttgart during World War II.

SOURCE. A-B, E - Bohdanowicz, Proszynski 1987. Ann. zool. 41, 2: 46-47, f 1-5; 48, f. 6-8, C - Yaginuma, 1986a: *Spiders of Japan in color* (new ed.) 224, f. 124.3, D - Wanless 1984. Bull. brit. Mus. nat. Hist. (Zool.), 46 (2): 153-154, f 6g-i, F - Doenitz & Strand in Boesenberg & Strand, 1906: 394, pl. 9, f. 127. All copyrights are

retained by the original authors and copyright holders, used by their courtesy.

COMMENT. One of those entangled cases requiring talent of a detective from a taxonomists. A collection of Salticidae from Japan received from Professor Takeo Yaginuma in 1968 for identification, contained identified couple of *Boethus sexdentatus*, which I have identified as a new genus and wanted to name for Yaginuma (other new genera in that batch included new genera *Helicius* and *Yaginumaella*). Specimens in the collection were drawn in 1970ties and results communicated in due course to Yaginuma and to Wanless. The formal publication was delayed until Mr. A. Bohdanowicz completed part unfinished by me, and ultimately it was published by Bohdanowicz & Prószyński (1987: Ann. zool. 41, 2: 46-47, f 1-5). In the mean time I found and studied in London Natural History Museum a specimen of different species labeled "*Sitticus*" *saganus* (f. E) [misidentified, not type which was destroyed during World War II in Stuttgart NH Museum]. This specimen, which F. R. Wanless interpreted as female of *Y. yaginumanis* (f. D), differs from female specimen sent to me by Yaginuma (f. B) and those published by Yaginuma himself (f. C, also in papers Yaginuma, 1967a: 54, 61, f. 2.1-9 and 1986a: 224, f. 124.3). The males seems to be conspecific, but females are apparently different, which of them matches male? I enquired with T. Yaginuma about that and he was sure that the couple he sent to me is properly matched. The matter require further research and, preferably, observation of mating.

COMMENT 2. The type specimen of *Sitticus saganus* was destroyed in Stuttgart NH Museum, bombed during World War II. The only original picture, published in 1906, display color pattern (f. F, above) resembling some *Sitticus* species, but cannot be identified with the following species of that genus reported from Japan: *Sitticus* (*distinguendus* group) *avocator*, *Sitticus* (*terebratus* group) *fasciger*, *Sitticus* (*penicillatus* group) *penicillatus*, *Sitticus* (*saxicola* group) *ranieri*.