

The software solution for exporting and
auditing SAP® data:

SmartExporter

Exporting SAP® data quickly and easily



Successful audits in the SAP® environment

Get your data the simple way

SAP® is used by roughly 100,000 companies worldwide. However, users of the software face a number of special challenges when attempting to analyze SAP® data outside of their SAP® environment.

Due to large volumes of data with complicated structures, complex workflows and diverse company specific entities it is extremely difficult to access SAP® data.

The solution: Export the SAP® data required for your audits quickly and easily to any directory using SmartExporter. With SmartExporter you can access data in the database and also archived data.

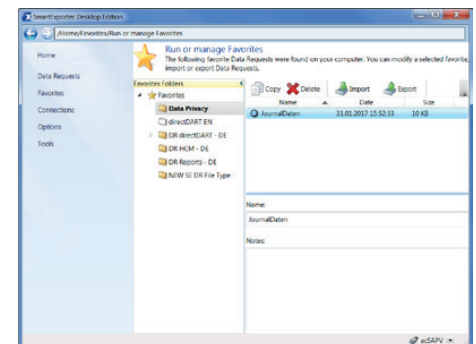
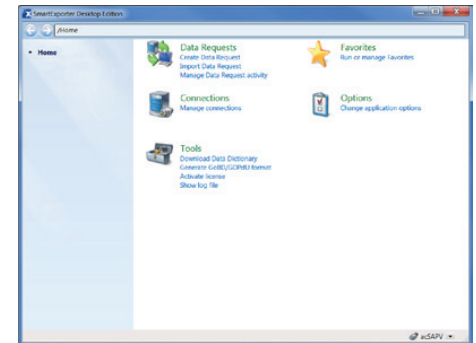
Please also visit the SmartExporter website at www.smartexporter.de/en.

Fast results

Unlike internal SAP® solutions which are managed centrally from within the SAP® system, SmartExporter is a Windows-based application. The Data Request is not created in SAP®, but on the user's computer. You work in the familiar Windows environment. This makes SmartExporter ideal for ad hoc analyses to reduce data analysis expenses.

You can use SmartExporter in the following areas:

- Internal audits
- Controlling
- Finance and accounting
- Bookkeeping and taxes
- IT
- Sales
- Audits
- Accounting control





Fast and easy? SmartExporter

Not familiar with SAP®? No problem.

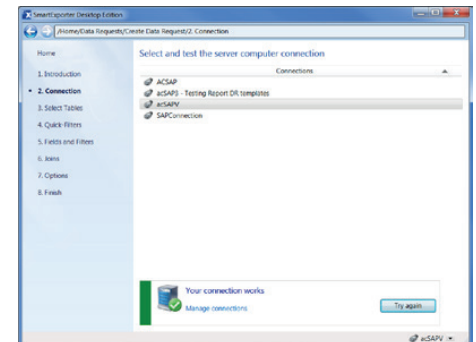
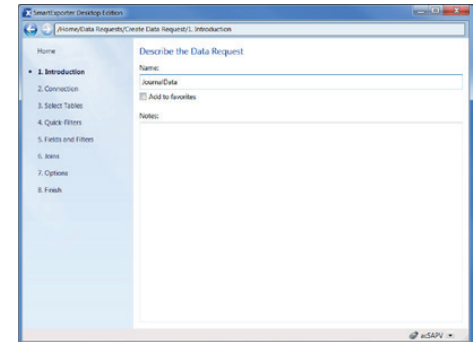
Make complex, time-consuming SAP® features a thing of the past. Thanks to SmartExporter you can create your Data Request where you are most comfortable – on your own computer. SmartExporter supports you in the complex task of selecting SAP® data: Once a Data Request specifying the required tables, joins, fields and filters is created you can save it as a favorite and reuse it anytime.

It is also possible to integrate SmartExporter into IDEA and SmartAnalyzer. After selecting your audit tests, SmartExporter identifies the SAP® data you actually need. Once the export is complete, you can analyze the exported data directly in IDEA and SmartAnalyzer.

Prepare Data: Right here.

Use SmartExporter to overcome the tiresome process of data preparation. You can now define the required joins for the data to be extracted while you are creating a Data Request in SmartExporter. Thus SmartExporter enables you to reduce the data volume to exactly suit your needs. The join definitions are an integrated part of your Data Request and SmartExporter provides data that you can analyze straightaway.

SmartExporter provides an Inner or Left Outer Join. Needless to say that using SmartExporter you can define joins for Pool and Cluster tables also.





Fast and easy? SmartExporter

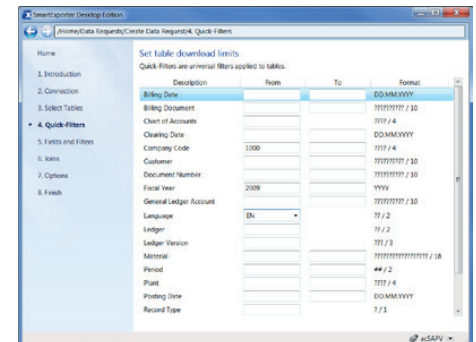
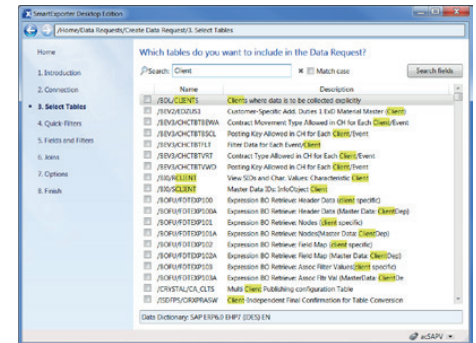
Online? Offline? Both.

SmartExporter offers you two ways to export data:

You can either connect to the SAP® system and export the SAP® data directly: Synchronous with small and asynchronous with large volumes of data.

Or you can work offline without access to the SAP® system, which for instance is generally the case with external auditors. You would then generate a Data Request with SmartExporter and transfer this XML file to the person in charge of the SAP® system who will provide the data you need. The SAP® data requested will be provided e.g. on a data carrier.

Whether online or offline, SmartExporter allows you to run exports depending on the current system workload or to schedule them to a specific time during off-peak hours, e.g., at night or on weekends.





Fast and easy? SmartExporter

SAP® structures or SAP® standard reports? No problem with the predefined Data Requests

Use SmartExporter to extract structures from Human Capital Management (HCM) and Human Resources (HR) or SAP® standard reports.

Structures are used in SAP® to condense fields. You do not have direct access to the data as these structures are filled at runtime by applications, like reports or payroll data which are generated at runtime by the SAP® business logic.

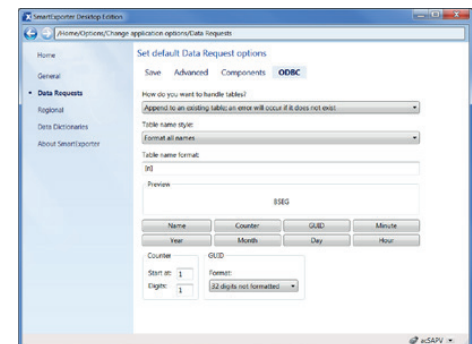
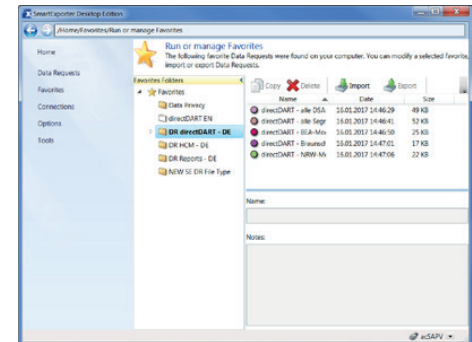
SmartExporter is shipped with predefined Data Request templates you can use to extract data from Human Capital Management or SAP® standard reports. You are also able to customize the Data Requests to match your specific needs.

Extract DART segments using directDART

The directDART Additional Data Source enables you to extract SAP® data according to the segment definitions of the SAP® Data Retention Tool (DART), which means that directDART extracts the data in the same structure as SAP® DART.

Direct streaming into ODBC data source

Save yourself the trouble of creating a CSV file first, which then has to be imported into the target database. With SmartExporter you can extract data from your SAP® system directly into an ODBC data source.





Absolute safety? SmartExporter

SmartExporter: Safe as can be!

SmartExporter is secure. User access to SAP® data is limited by the existing SAP® access authorizations. In addition, custom access authorizations can also be defined.

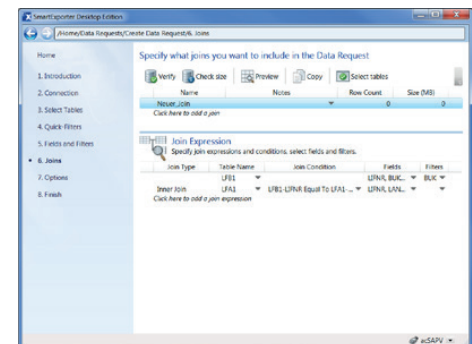
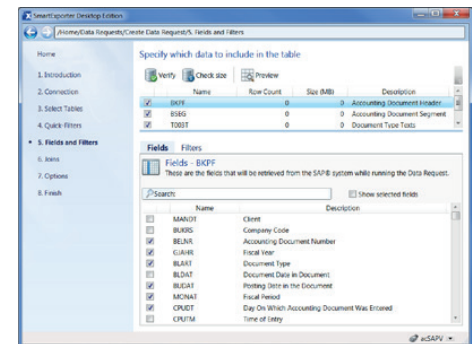
The authorization concept is not restricted to table level, but can be expanded to detailed information, such as company code or fiscal year.

Only users with the required SAP® authorizations can extract the data. This applies to all data extractions, no matter if archived data, SAP® standard reports or e.g. data from HCM are extracted.

Because access is restricted, data is displayed as read-only content. The original SAP® data cannot be edited.

All actions can be traced at any time, as they are recorded by a unique ID on the client and SAP® side. This ensures maximum transparency when using SmartExporter.

A further benefit: With SmartExporter, you can create files according to the GoBD default data structure.





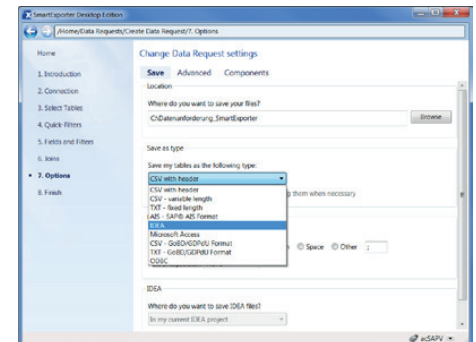
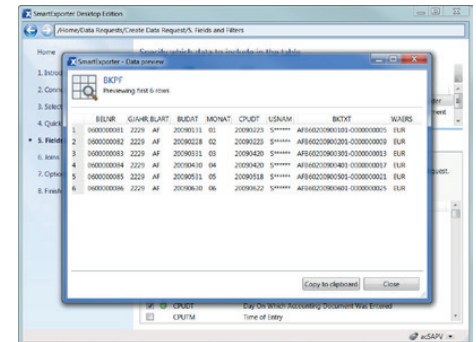
Data privacy? Be on the safe side – with SmartExporter!

Anonymization and pseudonymization of data

Using the Data Privacy feature of SmartExporter you can encrypt sensitive data on the SAP® system even before the extraction takes place.

The anonymization and pseudonymization is done by implementing the Data Privacy feature as a separate transaction in the SmartExporter SAP® components. This way the SAP® administrator stays in full control and manipulation by the user is ruled out.

There are separate roles to display and modify the settings which are available to anonymize or pseudonymize data.





Meet any requirement – with the SmartExporter editions

The SmartExporter flavors

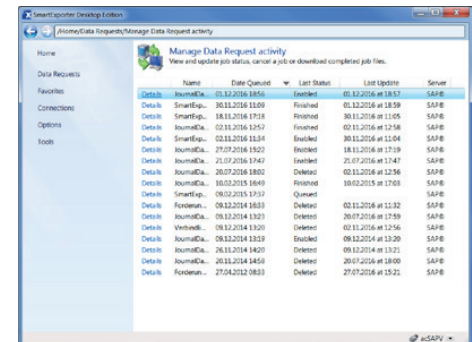
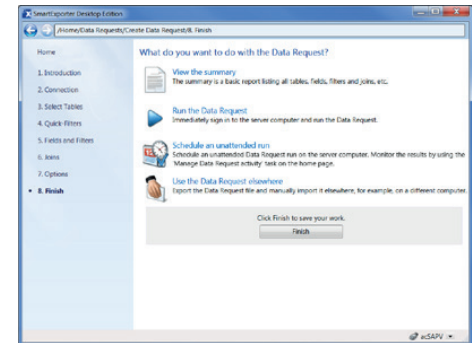
SmartExporter is available in various editions – providing the suitable edition for your specific needs.

The SmartExporter Desktop Edition is the full version of SmartExporter. Using the Desktop Edition you have access to all available features. Only the access to archived data requires a separate license.

The Client Edition was designed to provide a smooth and optimized workflow between auditor and client. The Client Edition offers the option to extract data from an SAP® system in a synchronous and asynchronous way. This guarantees a maximum of flexibility because the client is able to decide when and how the data requested by the auditor is extracted.

The licenses of the Desktop and the Client Edition are connected and the Client Edition can only import Data Requests or favorites created by the corresponding Desktop Edition.

The SmartExporter Server Edition is a separate installation which can be integrated into other processes, e.g. in IDEA Server or CaseWare Monitor, and provides a high potential for automation.





Technical specifications

Technical specifications:

- Output formats: IMD (IDEA), IDM (IDEA Unicode), CSV, TXT and Microsoft Access files, SAP® AIS format, ODBC and files formatted according to the default data structure
- Access to all transparent SAP® tables, Database Views, Pooled Tables and Cluster Tables and also archived data as long as it can be accessed with SAP® ADK (Archive Development Kit)
- SmartExporter communicates with the SAP® system using LIBRFC with RFC modules
- Transport requests are used to implement the SmartExporter SAP® components which SmartExporter client uses to call the RFC module. For SAP® base release 700 and higher also an Add-On is available.
- SmartExporter is also able to use existing SAP® standard components limiting, however, the scope of SmartExporter functionalities
- SmartExporter supports SAP® systems from release 4.6 C (Unicode/non-Unicode) with ABAP Stack and following
- Runs on Microsoft® Windows 7, Windows 7 SP1, Windows 8, Windows 8.1, Windows 10, Windows Server 2008 R2, Microsoft .NET Framework 4.6
- The SmartExporter Server Edition can be used as a standalone version as well as in combination with CaseWare Monitor or IDEA Server (version 9.1 or higher)



The safe way to success.

We offer a wide range of seminars to help you learn how to effectively use our software solutions. The content is tailored to suit your everyday practical needs. Benefit from the many years of experience our instructors have to offer and make full use of the features available in your software solutions.

Our product training courses, in-house seminars, and workshops teach you how to get the most out of your Audicon solutions. Save time by learning useful tricks and thus gain greater flexibility for your other important everyday tasks.

Do you want to save time and keep travel expenses to a minimum? Audicon seminars can be booked as external seminars or, on request, held in-house at your company. Many subjects are also available as webinars.

Visit any of the following Audicon seminars to put you a step ahead:

- Product training on SAP® data analysis with Audicon software solutions
- Workshop on SoD check: identifying critical single authorizations and authorization combinations in SAP® Basis/FI

You prefer individual training?

Please write an email to:

info@audicon.net



You can either wait for the future to come. Or, better yet, meet it halfway.

Audicon GmbH is the leading provider of software solutions, methodical and technical know-how and services for audit, risk and compliance. The solutions are designed for auditors and tax accountants, compliance and risk managers as well as controllers and treasurers.

Audicon - we care

Excellent and comprehensive service is our priority - 'we care' represents our claim to support you as a reliable partner until the successful conclusion of your project. Along with sophisticated and up-to-date software this requires experience, methodical knowledge and expertise as well as technical competence. A broad range of services completes our offer. It includes professional seminars and workshops as well as consulting services which are tailored to suit your needs.

Audicon GmbH

Neuer Zollhof 3
40221 Dusseldorf, Germany
Phone: (+49-211) 520-590
Facsimile: (+49-211) 520-59120
E-mail: info@audicon.net

Am Wallgraben 100
70565 Stuttgart, Germany
Phone: (+49-711) 788-860
Facsimile: (+49-711) 788-86180
E-mail: info@audicon.net

www.audicon.net

