

Multi Store Order

Introduction

The multi-store order (MSO) facilitates the mapping of business processes in which a corporation requires goods from you for any number of stores. You can process all stores in one single order.

You explode the MSO document in the following process steps. The system creates individual sales documents.

Notes >> Create sales order for different stores in a single document. Explode it, it will create different sales orders.

Order document

Order category : J3AM

Item Category : J3AM

You can recognize a multi-store order by the fact that you can enter more than one ship-to party in the sales document. You enter the multi-store order using an [MSO Mix](#) with which you uniquely assign order items to a group of stores.

Exploding a multi-store order

Notes >> MSO order contain different stores to which the items should be delivered. Via explosion, individual sales orders are created.

Logistics ® Sales and Distribution ® Sales ® Order ® Explode Multi-Store Order.

Tx : /n/afs/msoex

Multi-Store order mix

In order to group the Stores of sold-to-party of the document , we can use MSO mix. You uniquely distinguish your MSO mixes in the documents by using a key. You can name the key as you like.

You assign items to a MSO mix by assigning the key to the item.

System PU3 200

Tx : VA01

Order type : J3AM

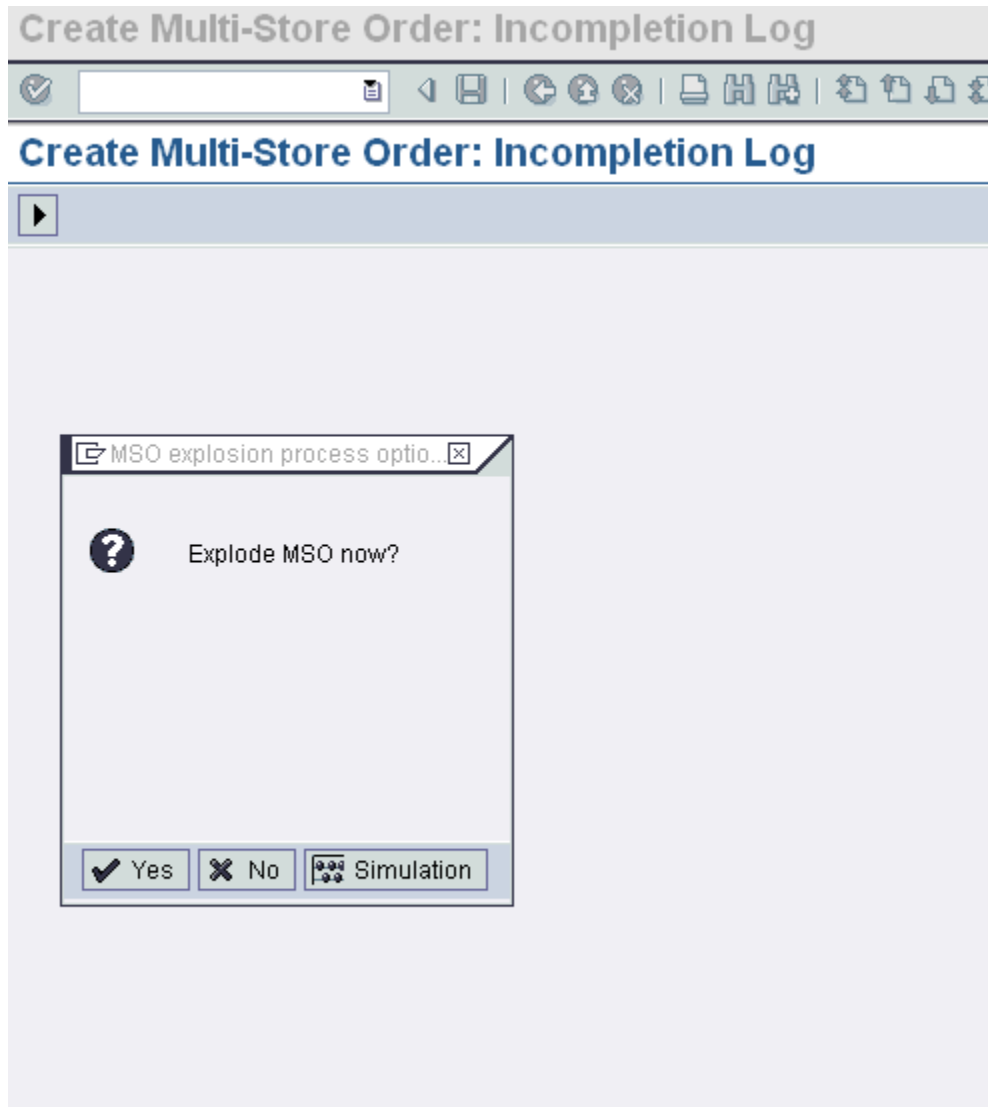
The screenshot displays the SAP 'Create Sales Order: Initial Screen' interface. At the top, there is a menu bar with 'Sales document', 'Edit', 'Goto', 'Environment', 'System', and 'Help'. Below the menu is a toolbar with various icons for navigation and actions. The main title of the screen is 'Create Sales Order: Initial Screen'. Below the title, there are several tabs: 'Create with Reference', 'Sales', 'Item overview', 'Ordering party', and 'To cc'. The 'Sales' tab is currently selected. In the main area, the 'Order Type' is set to 'J3AM' and the order is identified as a 'Multi-Store Order'. Below this, there is a section titled 'Organizational Data' which contains five input fields: 'Sales Organization', 'Distribution Channel', 'Division', 'Sales Office', and 'Sales Group'. All these fields are currently empty.

| | | |
|----------------------|----------------------|-------------------|
| Order Type | J3AM | Multi-Store Order |
| Organizational Data | | |
| Sales Organization | <input type="text"/> | |
| Distribution Channel | <input type="text"/> | |
| Division | <input type="text"/> | |
| Sales Office | <input type="text"/> | |
| Sales Group | <input type="text"/> | |

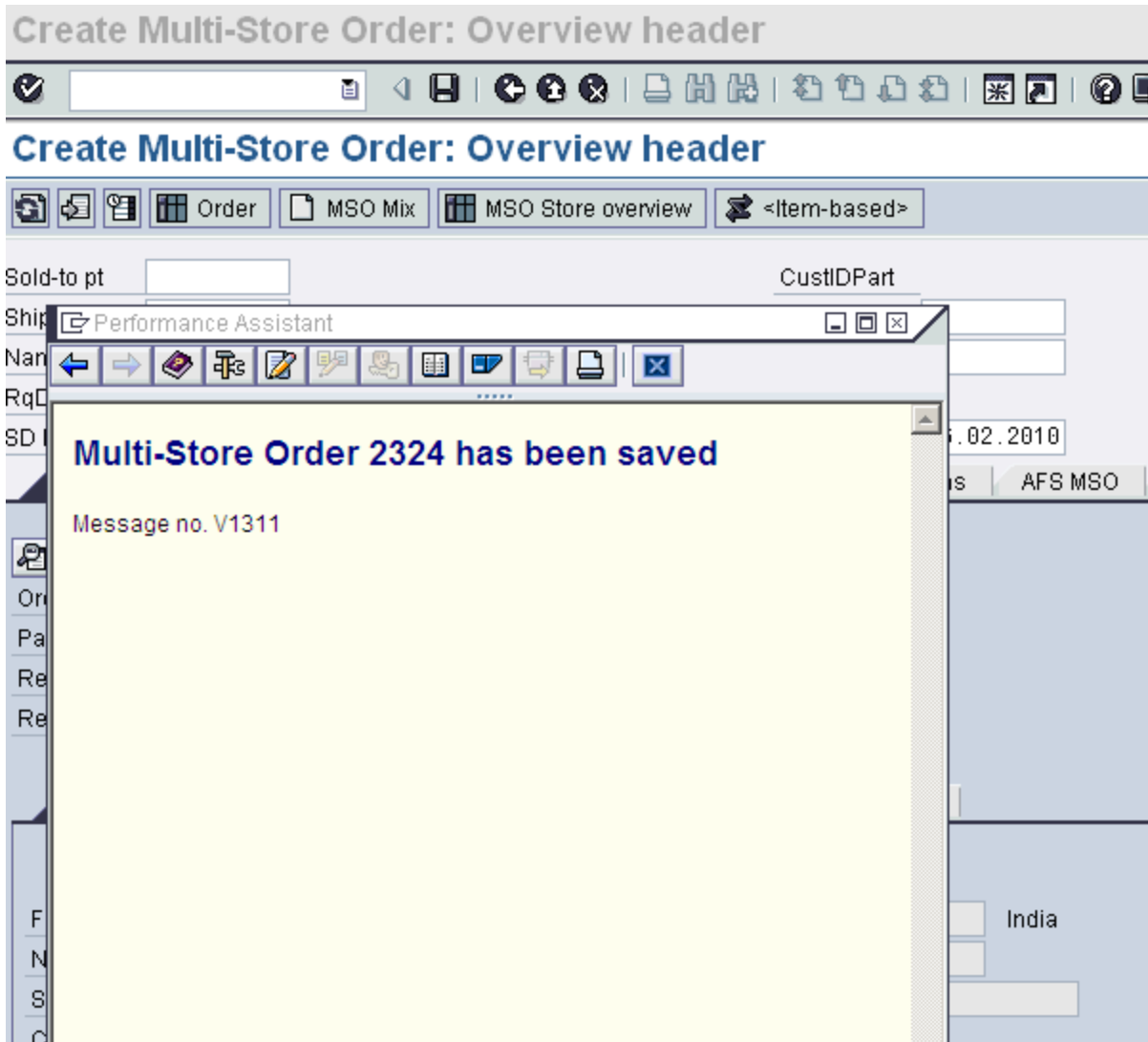
In AFS MSO tab, enter the details like

Mix, Material, Plant, Quantity etc.

And SAVE the document. Pop-up will be displayed. Press NO.



(In AFS tab, we will have only the MIX id and the materials)



Order : 2324

BDSI entries will be created . Screen shot from PC3,

Table Entry Edit Goto Settings Utilities(M) Environment System Help

Data Browser: Table J_3ABDSI Select Entries 2

Check Table...

Table: J_3ABDSI
 Displayed Fields: 25 of 84 Fixed Columns: 5 List Width 0250

| MANDT | AUFNR | POSNR | ETENR | BDART | WERKS | MATNR | J_3ASIZE | PLART | MENGE | J_3ATMPM | J_3ATMPB |
|------------------------------|------------|--------|-------|-------|-------|--------------|----------|-------|--------|----------|----------|
| <input type="checkbox"/> 200 | 0000011464 | 000100 | 0001 | 01 | 0001 | RK-GRID-MAT2 | BLU10 | 1 | 20.000 | 0.000 | |
| <input type="checkbox"/> 200 | 0000011464 | 000200 | 0001 | 01 | 0001 | RK-GRID-MAT3 | S RED | 1 | 24.000 | 0.000 | |

Tx : /AFS/MSOEX - To explode the MSO

Enter the sales order number and spread rule

And click execute.

List Edit Goto Extras Settings System Help

AFS Multi store order processing

DLN info MSO explosion


| Exce... | Sales Doc. | Doc.cat. | SaTy | Sold-to party | Order Quantity | MSOst | Distribution |
|--------------------------|------------|----------|------|---------------|----------------|-------|--------------|
| <input type="checkbox"/> | 2324 | \$ | J3AM | 22 | 3.000 | A | |

Select the entry and click on the button MSO explosion.

AFS Multi store order processing

AFS Multi store order processing

DLN info



| Exce... | Document | New SD Doc ... | Store | DistCenter | Department | Purchase order number | Log text |
|---------|----------|----------------|-------|------------|------------|-----------------------|--|
| ○○○ | 2324 | 2325 | S 27 | | | 1112 | Single order created |
| ○○○ | 2324 | 2326 | S 33 | | | 1112 | Single order created |
| ○○○ | 2324 | 2327 | S 34 | | | 1112 | Single order created |
| ○○○ | 2324 | | | | | | MSO explosion ended; all single orders created |

Sales orders 2325, 2326, and 2327 created.

2325 – ship to party : 27

2326 – ship to party : 33

2327 – ship to party : 34

After explosion, the Ship to party is changed

Sales document Edit Goto Extras Environment System Help

Display Standard order (MSO): Overview header

Order <Base values>

| | | | | | |
|------------|------------|---------------|------------|------------|------------|
| Sold-to pt | RK-CUST01 | Ravikiran PV | NELLORE | CustIDPart | DistCenter |
| Ship-to | RK-CUST04 | Ravikiran P.V | 524002 | CustIDPart | DistCenter |
| Name | | Pur. Order | MSO 1 | PO date | |
| RqDlv.date | 08.03.2012 | Q1 f | CancelDate | Q1 f | Valid from |
| SD Doc. | 11467 | Add.date | Q1 f | Doc. Date | 08.03.2012 |
| | | | | MSO doc.no | 11464 |

AFS Document Header AFS Item overview AFS Fast entry AFS Conditions AFS Ordering party AFS UPC/EAN AFS Order Scheduling G

| | | | |
|------------|------|----------------|----------|
| Ord.Reason | | Pur. ord. type | |
| Payt Terms | 0001 | Deliver.plant | |
| Ref.doc. | | Net Value | 9.62 USD |
| Release | | Quantity | 12 |

Business data / Texts Organizational data Additional grouping

| | | | |
|-----------------|---------------|-------------|----------|
| Form of address | Mr. | Country | IN India |
| Name | Ravikiran P.V | Region | |
| Street | | Postal Code | |
| City | 524002 | | |

Old BDSI is deleted and the new BDSI will be created.

Assignment of Store to Sold-to-party

To facilitate working with multi-store orders, the AFS system offers different ways to define the relationship of stores and a sold-to party.

An assignment of the stores to a sold-to party within an MSO-relevant hierarchy allows you to automatically copy stores into the MSO document.

You can assign stores with the partner function WE to a sold-to party in the customer master. This corresponds to the maintenance of the partner functions you know from the standard system.

You can specify in the customer master of the stores, which other customer is allowed for them as the sold-to party of a multi-store order.

Customer hierarchy

With this, we can define the relation between sold-to party and stores

Tx : VDH2

Hierarchy type : J (AFS hierarchy)

Display customer hierarchy

Display customer hierarchy

Hierarchy parameters

| | |
|-------------------------|------------|
| Customer hierarchy type | J |
| Validity date | 16.02.2010 |

Delimit. of hierarchy nodes

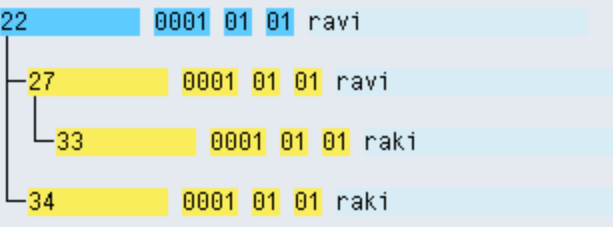
| | | | | |
|----------------------|------|----|--|---|
| Customers | 22 | to | | → |
| Sales organizations | 0001 | to | | → |
| Distribution channel | 01 | to | | → |
| Divisions | 01 | to | | → |

only node-specific paths

Display Customer Hierarchy

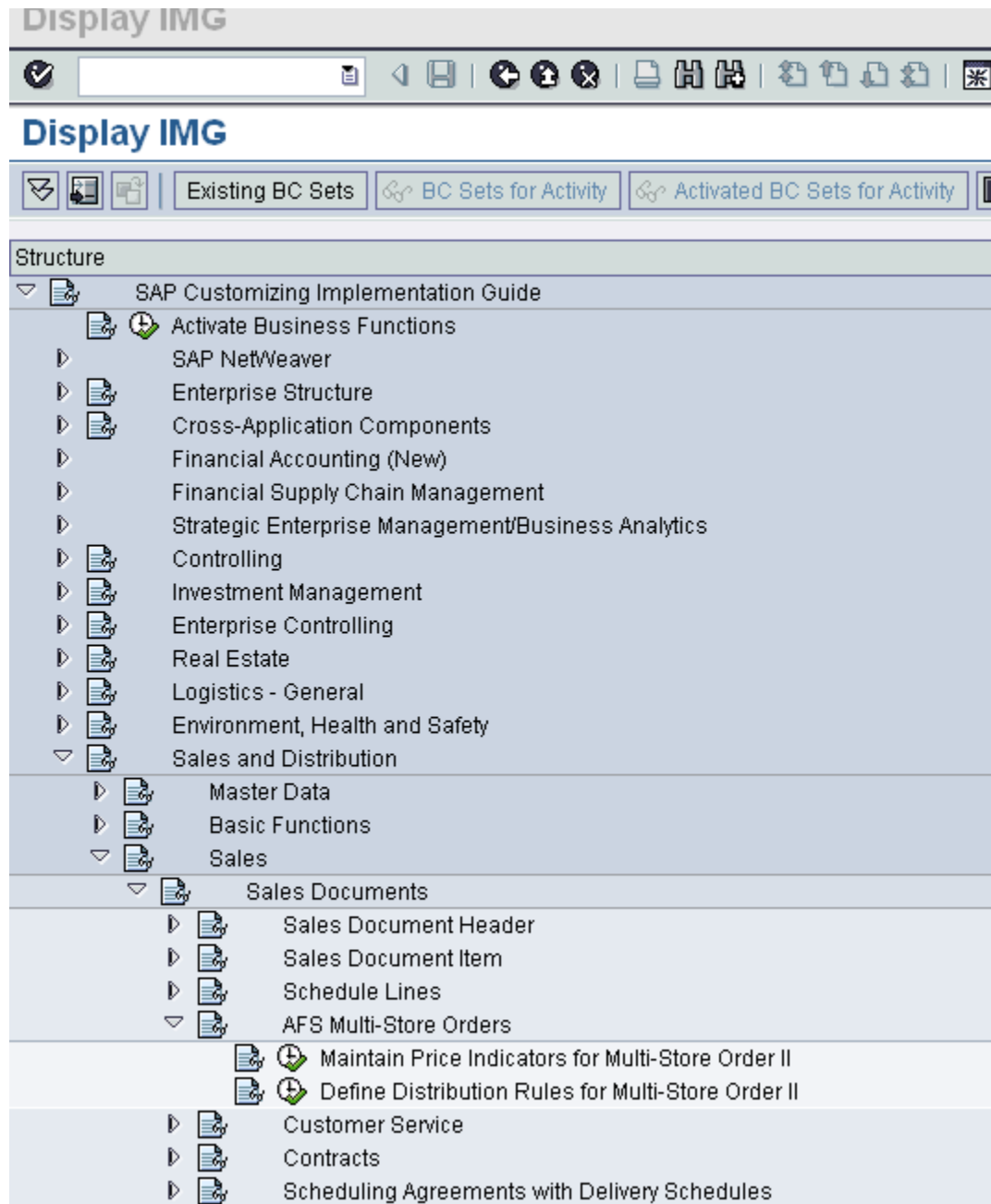
Assign...

Hierarchy header Selection date: 16.02
Dependent hierarchy nodes



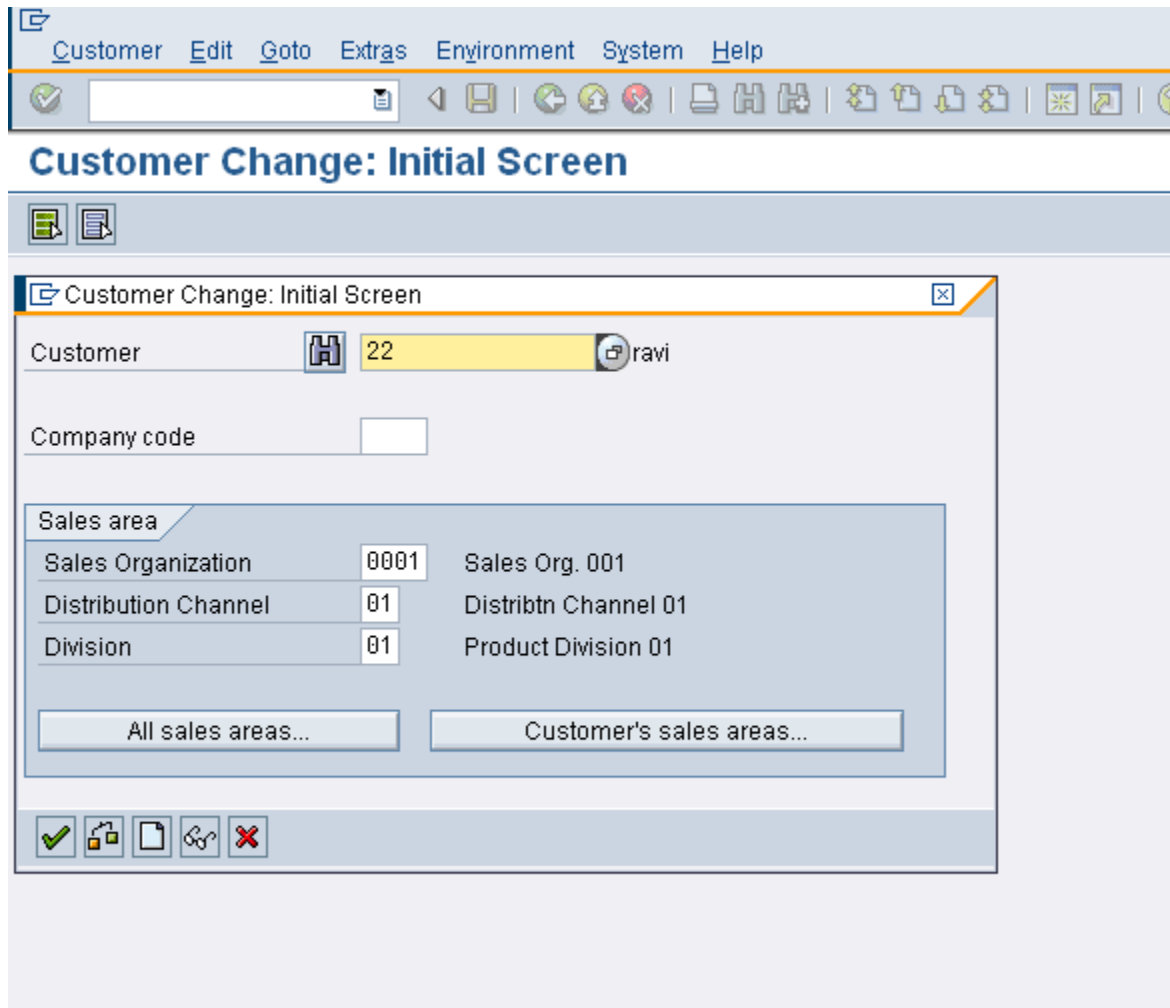
Spread rule customizing

1. IMG customizing



Customer master

XD02



We can assign the Distribution Rule

Change Customer: Sales Area Data

Customer: 22 ravi 543434
Sales Org.: 0001 Sales Org. 001
Distr. Channel: 01 Distribtn Channel 01
Division: 01 Product Division 01

Sales Shipping Billing Documents Partner Functions **AFS Additional Data**

AFS additional data

Customer/Vender ID
Schedule Strategy

Value added services

Packing material no determination, no item generation of vas
T/L material no determination, no item generation of vas
SpService material no determination, no item generation of vas
VAS Cust.Group

Allocation run

Group Strategy
Release Strategy
Substitution Strategy

AFS MSO

Dist. Rule MSO II

Order proposal

Substitution off No duplicate key
Substitution Strategy

SAP Help

http://help.sap.com/saphelp_afs60/helpdata/en/index.htm

Sales and Distribution -> Sales -> Store Order -> Multi Store Order