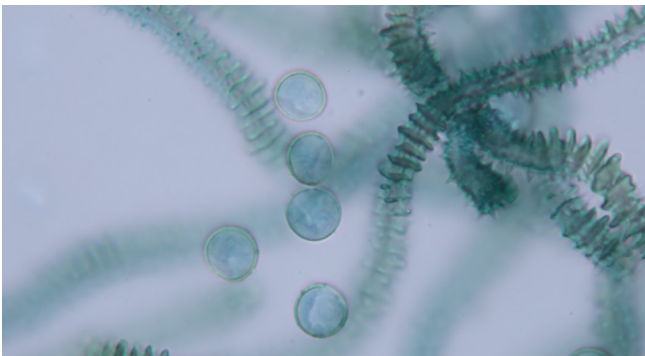
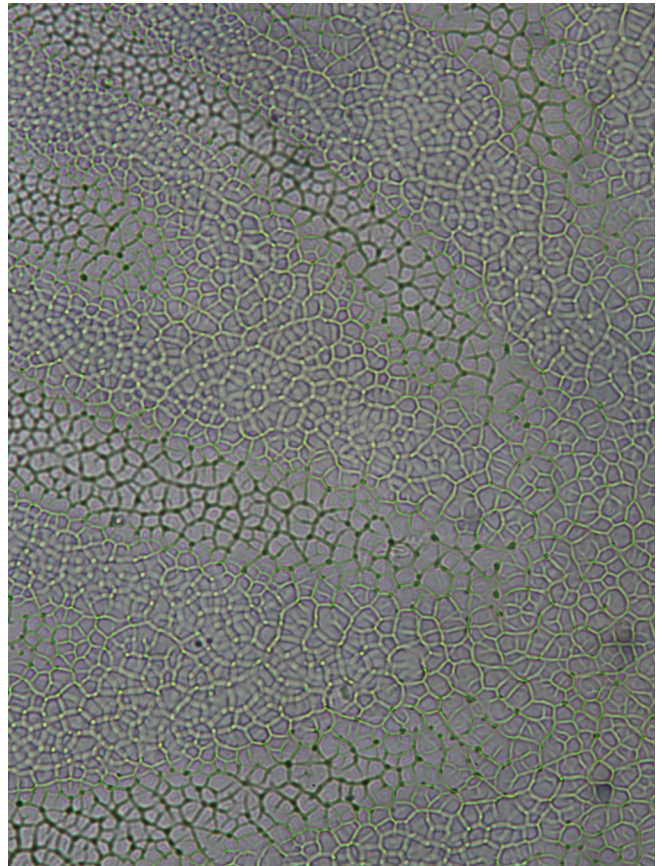
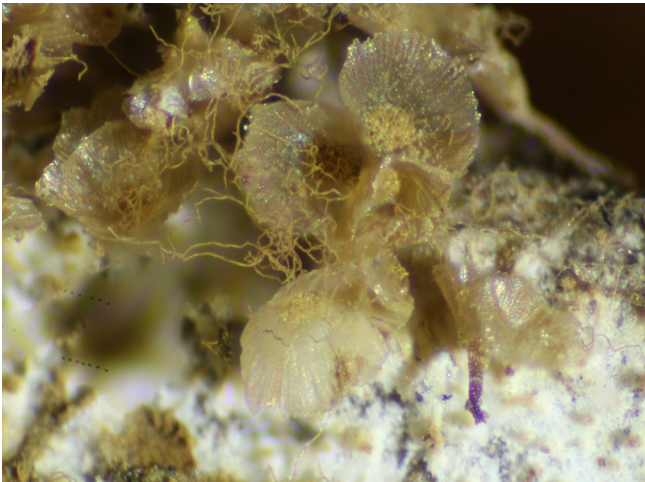
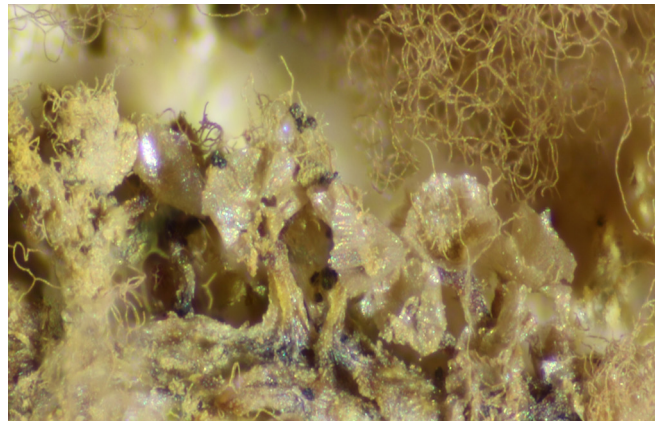


Date 29 Nov. 2013. Black Sugarloaf, Birralee (swamp).

Habitat: *Melaleuca ericifolia* swamp forest.

Substrate *Acacia melanoxylon* log.

Description Several groups of crowded ochraceous sporangia. **Sporotheca** very pale yellow, approximately 0.5 mm high after dehiscence. **Stalk** brown or beige, 0.3 mm long. **Hypothallus** contiguous under groups, colourless. **Peridium** fugacious leaving shallow shiny slightly plicate calyculus, 0.5 mm wide, reticulate inner surface (oil immersion lens). **Capillitium** beige, 5 mm long plumes decorated with half rings, spines and reticulations, 3–4 µm diameter. **Spores** pale yellow in mass, almost colourless by transmitted light, nearly smooth with a few scattered warts, 7 µm. **Notes** Common at Black Sugarloaf.



1 Jan. 2017 *Arcyria obvelata* #0810 with capillitium expanding soon after being collected.