

Date 28 April 2014. Black Sugarloaf, Birralee (swamp).

Habitat: *Melaleuca ericifolia* swamp forest.

Substrate underside of fallen *Acacia melanxylon* log.

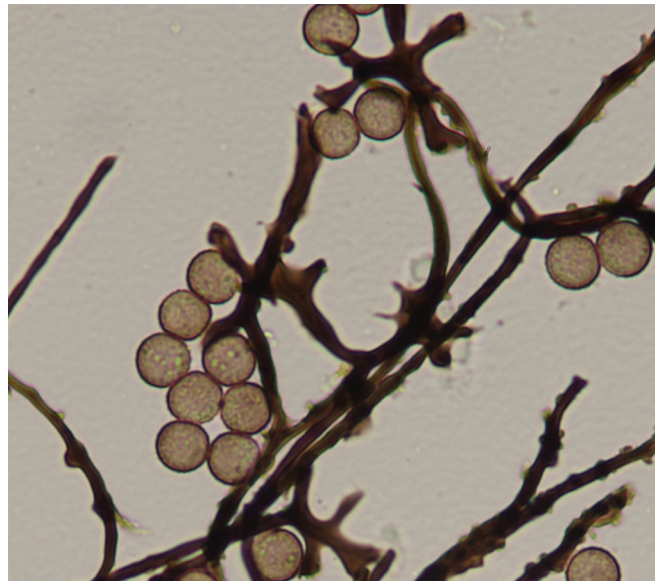
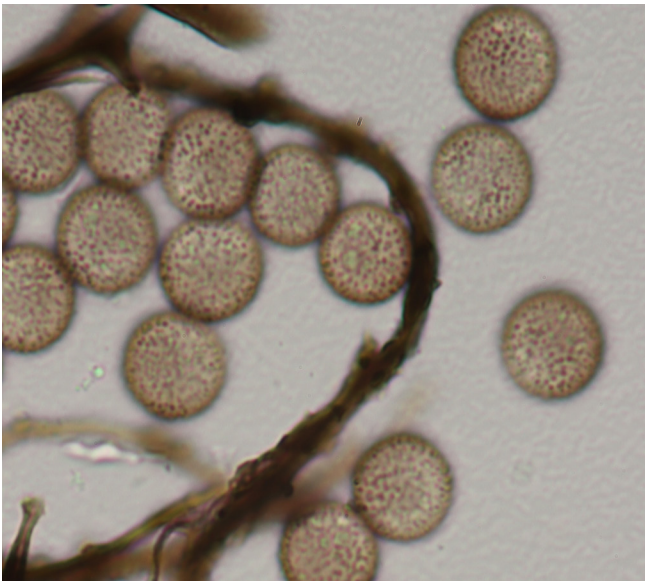
Description scattered stalked sporangia 0.8 mm tall.

Sporotheca globose, dark brown except for small shiny apical disc to which the capillitium is attached, 0.5 mm diameter.

Stalk fibrous, slightly wider at base, grooved. **Hypothallus** membranous, discoid, light brown.

Columella extending to apex of sporangium ending in a small shiny disc.

Capillitium long dark threads connected to and descending from apical disc, scantily branched, with spines and rounded protuberances. **Spores** dark brown in mass, lighter brown by transmitted light with small scattered warts, 10 µm. **Notes:** Very common in some years, e.g. 2014 & 2016; probably overlooked because of its small size.



Enerthenema papillatum on *Acacia melanoxylon* 29 March 2015 #0378